



Upcoming Trail Construction:

Week of 18 October

- STA 319+42-320+32 and 361+52 - 362+35: Fill, test, and flush water mains
- STA 290+00 - 291+50: Continue drainage system construction at Waverly Beach.
- STA 299+88 - 305+70: Excavate and grade Walls 4, and 5.
- STA 299+88 - 305+70: Install Underdrain, Wall Drain, and Rock Pad for Walls 4 and 5
- STA 329+24 - 352+36: Clearing and grubbing.

Week of 25 October

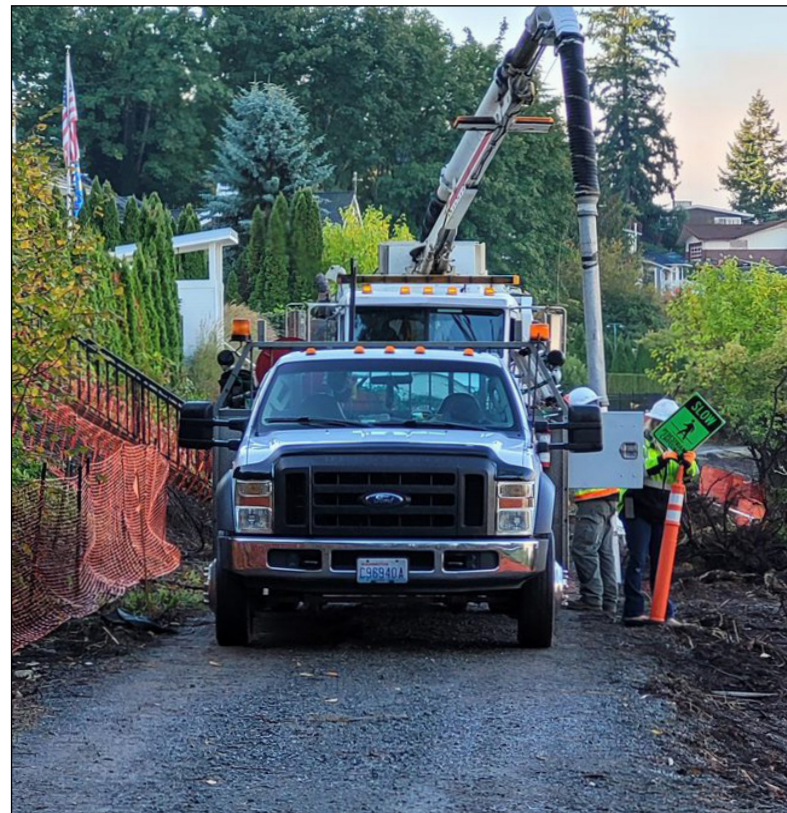
- STA 290+00 - 291+50: Continue drainage system construction at Waverly Beach.
- STA 299+88 - 305+70: Excavate and grade Walls 1, 3D, 4, and 5.
- STA 299+88 - 305+70: Install Underdrain, Wall Drain, and Rock Pad for Walls 1, 3D, 4 and 5
- STA 314+45 - 328+15: Excavate and grade for Wall 9 and 10.
- STA 329+24 - 375+50: Clearing and grubbing.
- STA 355+38 - 355+59: Relocate existing sewer



Recently delivered drain pipe to be used on the multiple drainage systems along the trail.



An excavator begins to dig for a retaining wall footing while the project geologist examines the uncovered soil.



Crews continue to pothole, locating utility lines buried under the trail before excavating for retaining walls and trail drainage work.



Week of 1 November

- STA 290+00 - 291+50: Continue drainage system construction at Waverly Beach.
- STA 299+88 - 305+70: Expose and encase utilities at Walls 1, 3D, and 4.
- STA 328+15 - 333+65: Excavate and grade for Wall 11.
- STA 328+15 - 333+65: Expose and encase utilities at Wall 11.
- STA 329+24 - 375+50: Clearing and grubbing.
- STA 319+42 - 320+32: Connect water main



Excavating to upgrade a drain line that conveys storm water under the trail.



Grubbing the edge of the trail to prepare the site for a new retaining wall.



Positioning new drainpipe by hand and with the help of an excavator. This pipe will temporarily divert storm water around work to install a permanent drain line nearby.

Project Contacts

Hotline: 1-888-668-4886

Email: ELST@kingcounty.gov

Project Website:

<http://www.KingCounty.gov/EastLakeSammamishTrail>