



Upcoming Trail Construction:

Week of 23 August

- STA 283+00 – 350+75: Disconnect trailside electrical fixtures.
- STA 283+00 – 350+75: Continue potholing to locate buried utilities.
- STA 283+00 - 352+36: Begin site security fence installation.
- STA 306+12 - 352+36: Continue tree pruning and removal.
- STA 283+00 – 329+24: Continue clearing and grubbing.
- STA 283+00 - 306+12: Install high visibility silt fence, following tree removal.
- STA 306+12 - 329+24. Install high visibility fence, following tree removal.



A boom truck is used to remove tall trees, one limb or trunk section at a time.



Nearing the bottom of this tree, the crew prepares to cut the final trunk sections.

Week of 30 August

- STA 283+00 – 350+75: Disconnect trailside electrical fixtures.
- STA 329+24 – 350+75: Continue potholing to locate buried utilities.
- STA 329+24 - 375+50: Install high visibility silt fence, following tree removal.
- STA 329+24 - 375+50: Install high visibility fence, following tree removal.
- STA 352+36 - 375+50. Continue site security fence installation.
- STA 352+36 - 375+50: Continue tree pruning and removal.
- STA 352+36 - 375+50. Continue clearing and grubbing.
- STA 306+12 - 332+50: Mitigation area clearing

Construction Notes.

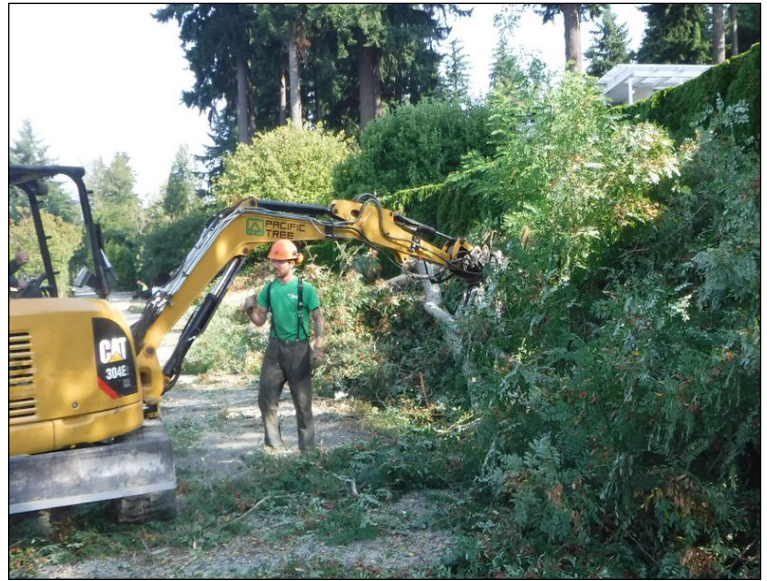
The trail construction entrances and exits are temporary, rock-stabilized trail sections designed to remove mud and debris from vehicle tires as they exit the site. The large rock is replaced if it fills with mud from passing vehicles and no longer effective. Along with silt fencing, they are one of several soil erosion control methods used during trail construction.

King County will provide weekly construction updates that include upcoming construction activities and their locations. These will be located on the project website at www.eastlakesammamishtrail@kingcounty.gov or you may sign up to receive them via email by contacting the project hotline at 1.888.668.4886 or project email at ELST@kingcounty.gov



Week of 6 September

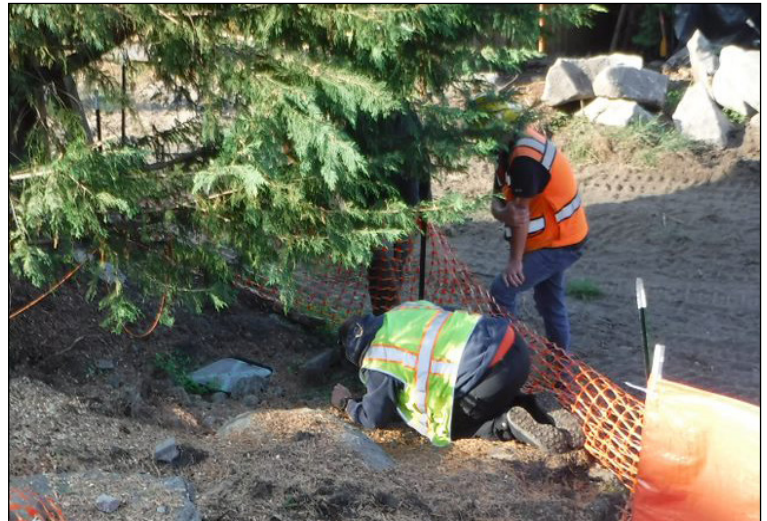
- STA 283+00 – 350+75: Disconnect trailside electrical fixtures.
- STA 283+00 – 350+75: Continue potholing to locate buried utilities.
- STA 329+24 - 375+50: Install high visibility silt fence, following tree removal.
- STA 329+24 - 375+50: Install high visibility fence, following tree removal.
- STA 352+36 - 375+50: Continue tree pruning and removal.
- STA 352+36 - 375+50. Continue clearing and grubbing.
- STA 352+36 - 375+50: Mitigation area clearing
- STA 352+36 - 375+50. Continue site security fence installation.



Brush and tree limbs are cleared, then mulched on site.



An excavator removes soil along the trail's edge to expose utility lines.



Installing high visibility fence at the edge of the construction boundary, and around a tree to be preserved.

Project Contacts

Hotline: 1-888-668-4886

Email: ELST@kingcounty.gov

Project Website:

<http://www.KingCounty.gov/EastLakeSammamishTrail>