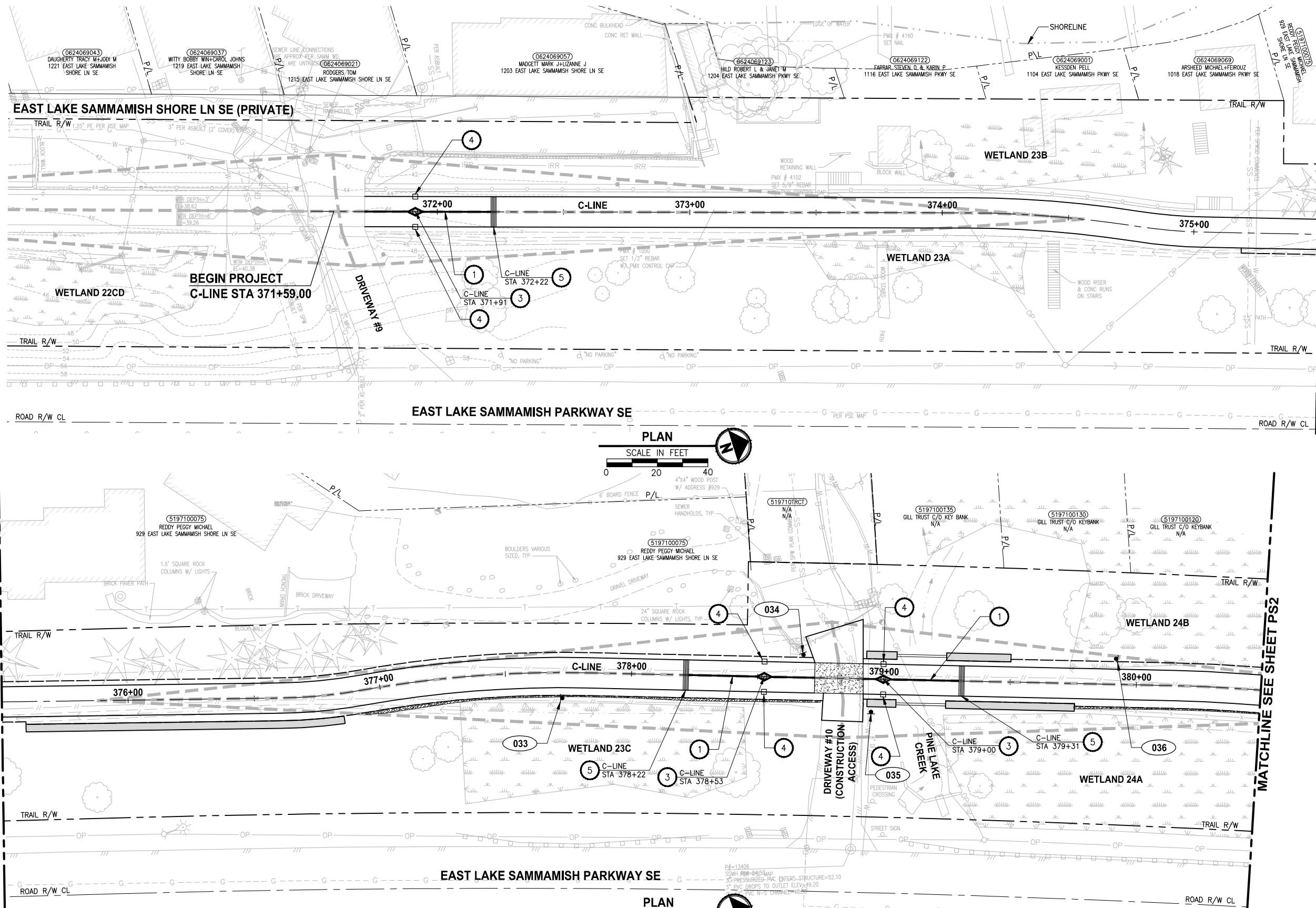


PATH: U:\P50\Projects\Clients\1521-KingCo\554-1521-075-ELST\985\Set\CA00\Phase 19\T03 CHA\Draw-Phase2\ PLOTTED BY: purgaban DATE: Monday, June 14, 2021 5:38:39 PM LAYOUT: PSI



PAVEMENT MARKING AND SIGNING CONSTRUCTION NOTES:

1. INSTALL BOLLARD STRIPING PER DETAIL **MD4** **MD6**
2. INSTALL PET WASTE STATION. SEE APPENDIX B OF SPECIFICATIONS FOR DETAILS.
3. INSTALL TOP LOCKING REMOVABLE BOLLARD PER DETAILS ON SHEET MD5.
4. INSTALL BOLLARD TYPE FIXED PER DETAILS ON SHEET MD7.
5. CONCRETE WARNING BAND PER DETAIL **MD6**
6. INSTALL CONCRETE WHEEL STOP PER WSDOT STD PLAN M-17.10-02 AND DETAIL ON SHEET PS9. SEE APPENDIX B OF SPECIFICATIONS.
7. INSTALL DETECTABLE WARNING SURFACE PER WSDOT STD PLAN F-45.10-02.
8. INSTALL SALVAGED MAILBOX ON NEW POST PER WSDOT STANDARD PLAN H-70.20-01. LOCATION TO BE REVIEWED BY POSTMASTER.
9. INSTALL TRASH RECEPTACLE, SEE APPENDIX B OF SPECIFICATIONS.
10. INSTALL 4" WHITE PAINT LINES PER WSDOT STD PLAN M-17.10-02, 45 DEGREE STALL ARRANGEMENT.
11. INSTALL TYPE 1S TRAFFIC ARROW PER WSDOT STD PLAN M-24.40-02.

LEGEND:

XXX SIGN, SEE SHEET PS11 FOR SIGN SCHEDULE.

14.5' X 29.5' SIGHT DISTANCE TRIANGLE FOR STOP CONTROLLED INTERSECTION ON DRIVEWAYS PER COS STD FIG 02-19A

GENERAL NOTES:

1. FOR SIGN REMOVAL, SEE SP SHEETS.
2. STATION CALLOUTS ARE MEASURED TO THE CENTER OF WARNING BAND AND BOLLARDS.

CITY OF SAMMAMISH PUBLIC WORKS DEVELOPMENT REVIEW

These drawings have been reviewed for compliance with City of Sammamish Clearing and Grading and Stormwater requirements and also in accordance with the requirements as established in the Settlement Agreement between King County vs. City of Sammamish No. C17-0921 JCC and King County vs. City of Sammamish No. 17-2-29922-7 SEA and have been deemed ACCEPTABLE. The reviewer accepts no responsibility for any errors and/or omissions made by the preparer of these drawings.

17 February 2022

CITY OF SAMMAMISH APPROVAL

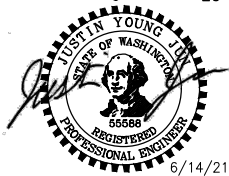
City Engineer	Date
Community Development	Date

CONFORMED DRAWINGS



REVISIONS	DATE	BY	DESIGNED
			J. JUN
			B. PURGANAN
			CHECKED Y. HO
			APPROVED J. BAILEY

ONE INCH AT FULL SCALE.
IF NOT, SCALE ACCORDINGLY
FILE NAME: BL1521075P19T03PS-01
JOB No.: 554-1521-075 P19 T03
DATE: JUNE 2021



Parametrix
ENGINEERING · PLANNING · ENVIRONMENTAL SCIENCES

719 2ND AVENUE, SUITE 200 | SEATTLE, WA 98104
P 206.394.3700
WWW.PARAMETRIX.COM

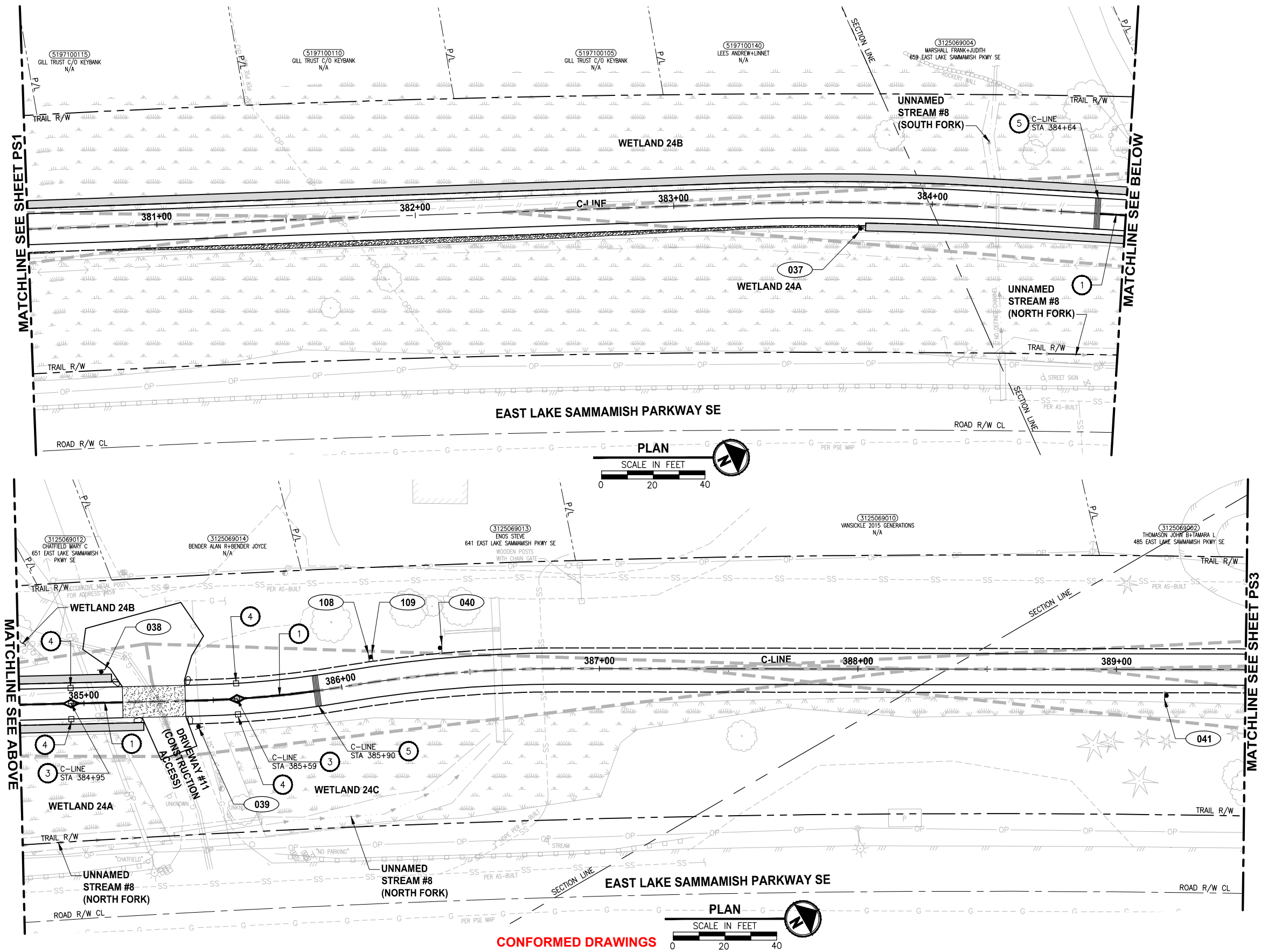
PROJECT NAME
**EAST LAKE SAMMAMISH
MASTER PLAN TRAIL
SOUTH SAMMAMISH SEGMENT B - PHASE 2**
SAMMAMISH, WA

**PAVEMENT MARKING AND
SIGNING PLAN**

SHEET NO.
121 OF 213

PS1

PATH: U:\PS0\Projects\Clients\1521-KingCo\554-1521-075-ELST\99Sves\CADD\Phase 19\T03_Civil\Draw-Phase2\ PLOTTED BY: purgubut DATE: Monday, June 14, 2021 5:38:51 PM LAYOUT: PS2



PAVEMENT MARKING AND SIGNING CONSTRUCTION NOTES:

1. INSTALL BOLLARD STRIPING PER DETAIL **1** **MD4** **1** **MD6**
2. INSTALL PET WASTE STATION. SEE APPENDIX B OF SPECIFICATIONS FOR DETAILS.
3. INSTALL TOP LOCKING REMOVABLE BOLLARD PER DETAILS ON SHEET MD5.
4. INSTALL BOLLARD TYPE FIXED PER DETAILS ON SHEET MD7.
5. CONCRETE WARNING BAND PER DETAIL **2** **MD6**
6. INSTALL CONCRETE WHEEL STOP PER WSDOT STD PLAN M-17.10-02 AND DETAIL ON SHEET PS9. SEE APPENDIX B OF SPECIFICATIONS.
7. INSTALL DETECTABLE WARNING SURFACE PER WSDOT STD PLAN F-45.10-02.
8. INSTALL SALVAGED MAILBOX ON NEW POST PER WSDOT STANDARD PLAN H-70.20-01. LOCATION TO BE REVIEWED BY POSTMASTER.
9. INSTALL TRASH RECEPTACLE, SEE APPENDIX B OF SPECIFICATIONS.
10. INSTALL 4" WHITE PAINT LINES PER WSDOT STD PLAN M-17.10-02, 45 DEGREE STALL ARRANGEMENT.
11. INSTALL TYPE 1S TRAFFIC ARROW PER WSDOT STD PLAN M-24.40-02.

LEGEND:

XXX SIGN, SEE SHEET PS11 FOR SIGN SCHEDULE.

14.5' X 295' SIGHT DISTANCE TRIANGLE FOR STOP CONTROLLED INTERSECTION ON DRIVEWAYS PER COS STD FIG 02-19A

GENERAL NOTES:

1. FOR SIGN REMOVAL, SEE SP SHEETS.
2. STATION CALLOUTS ARE MEASURED TO THE CENTER OF WARNING BAND AND BOLLARDS.

CITY OF SAMMAMISH PUBLIC WORKS DEVELOPMENT REVIEW

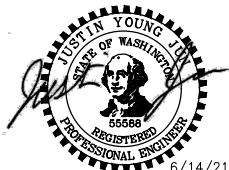
These drawings have been reviewed for compliance with City of Sammamish Clearing and Grading and Stormwater requirements and also in accordance with the requirements as established in the Settlement Agreement between King County vs. City of Sammamish No. C17-0921 JCC and King County vs. City of Sammamish No. 17-2-29922-7 SEA and have been deemed ACCEPTABLE. The reviewer accepts no responsibility for any errors and/or omissions made by the preparer of these drawings.

17 February 2022

CITY OF SAMMAMISH APPROVAL

City Engineer	Date
Community Development	Date

CONFORMED DRAWINGS



ONE INCH AT FULL SCALE, IF NOT, SCALE ACCORDINGLY
FILE NAME: BL1521075P19T03PS-01
JOB No.: 554-1521-075 P19 T03
DATE: JUNE 2021

Parametrix
ENGINEERING · PLANNING · ENVIRONMENTAL SCIENCES

719 2ND AVENUE, SUITE 200 | SEATTLE, WA 98104
P 206.394.3700
WWW.PARAMETRIX.COM

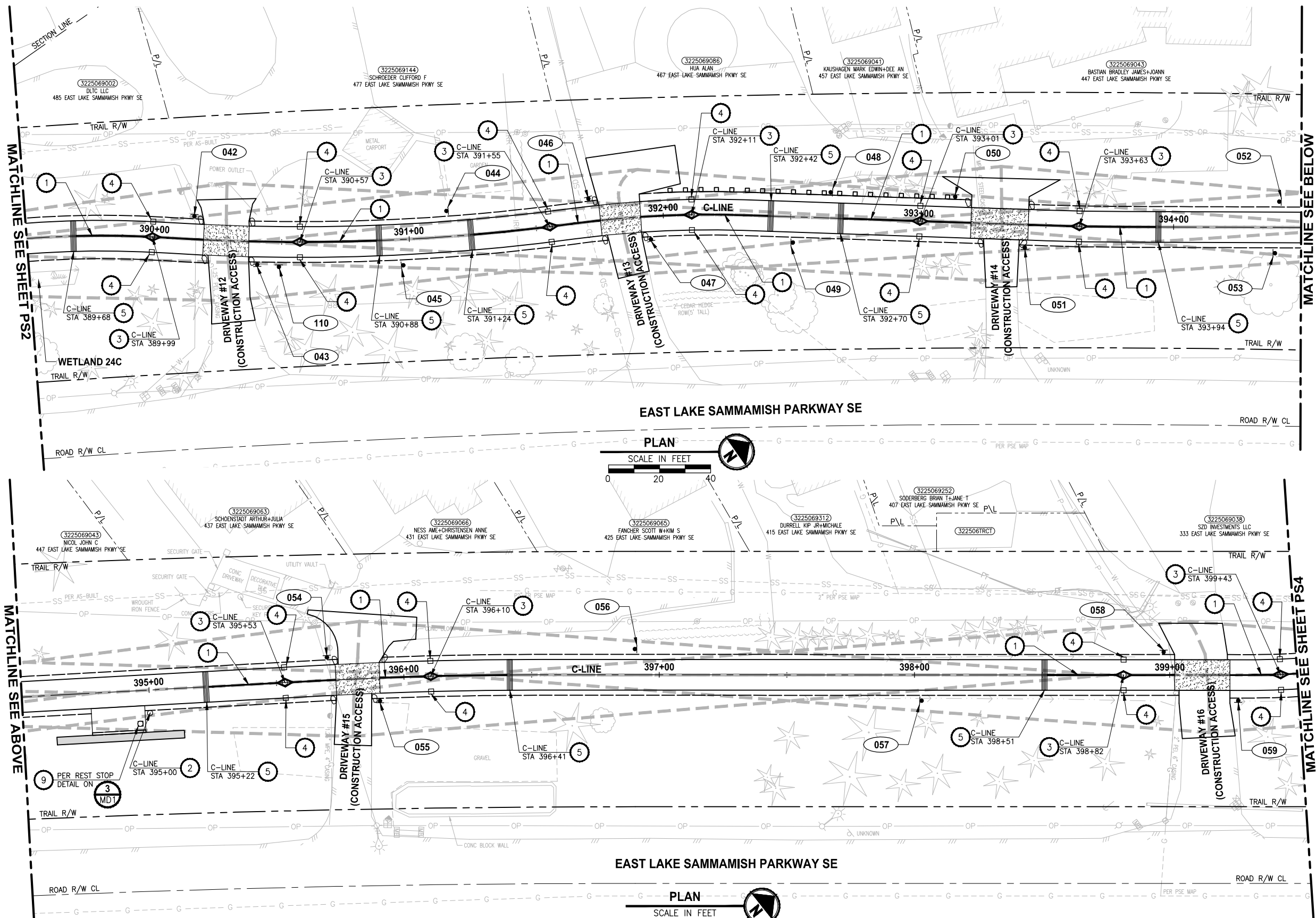
PROJECT NAME
EAST LAKE SAMMAMISH MASTER PLAN TRAIL SOUTH SAMMAMISH SEGMENT B - PHASE 2
SAMMAMISH, WA

PAVEMENT MARKING AND SIGNING PLAN

SHEET NO.
122 OF 213

PS2

U:\PS0\Projects\Clients\1521-KingCo\554-1521-075-ELST-99Sves\CADD\Phase 19\T03 Civil\Draw-Phase2\ PLOTTED BY: purgubut DATE: Monday, June 14, 2021 5:39:01 PM LAYOUT: PS3



**PAVEMENT MARKING AND SIGNING
CONSTRUCTION NOTES:**

- 1 INSTALL BOLLARD STRIPING PER DETAIL **MD4** **MD6**
- 2 INSTALL PET WASTE STATION. SEE APPENDIX B OF SPECIFICATIONS FOR DETAILS.
- 3 INSTALL TOP LOCKING REMOVABLE BOLLARD PER DETAILS ON SHEET MD5.
- 4 INSTALL BOLLARD TYPE FIXED PER DETAILS ON SHEET MD7.
- 5 CONCRETE WARNING BAND PER DETAIL **MD6**
- 6 INSTALL CONCRETE WHEEL STOP PER WSDOT STD PLAN M-17.10-02 AND DETAIL ON SHEET PS9. SEE APPENDIX B OF SPECIFICATIONS.
- 7 INSTALL DETECTABLE WARNING SURFACE PER WSDOT STD PLAN F-45.10-02.
- 8 INSTALL SALVAGED MAILBOX ON NEW POST PER WSDOT STANDARD PLAN H-70.20-01. LOCATION TO BE REVIEWED BY POSTMASTER.
- 9 INSTALL TRASH RECEPTACLE, SEE APPENDIX B OF SPECIFICATIONS.
- 10 INSTALL 4" WHITE PAINT LINES PER WSDOT STD PLAN M-17.10-02, 45 DEGREE STALL ARRANGEMENT.
- 11 INSTALL TYPE 1S TRAFFIC ARROW PER WSDOT STD PLAN M-24.40-02.

LEGEND:

XXX SIGN, SEE SHEET PS11 FOR SIGN SCHEDULE.

14.5' X 295' SIGHT DISTANCE TRIANGLE FOR STOP CONTROLLED INTERSECTION ON DRIVEWAYS PER COS STD FIG 02-19A

GENERAL NOTES:

1. FOR SIGN REMOVAL, SEE SP SHEETS.
2. STATION CALLOUTS ARE MEASURED TO THE CENTER OF WARNING BAND AND BOLLARDS.

**CITY OF SAMMAMISH PUBLIC WORKS
DEVELOPMENT REVIEW**

These drawings have been reviewed for compliance with City of Sammamish Clearing and Grading and Stormwater requirements and also in accordance with the requirements as established in the Settlement Agreement between King County vs. City of Sammamish No. C17-0921 JCC and King County vs. City of Sammamish No. 17-2-29922-7 SEA and have been deemed ACCEPTABLE. The reviewer accepts no responsibility for any errors and/or omissions made by the preparer of these drawings.

17 February 2022

CITY OF SAMMAMISH APPROVAL

City Engineer	Date
Community Development	Date

CONFORMED DRAWINGS

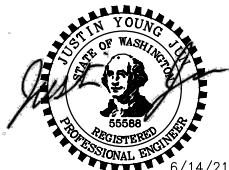


EAST LAKE SAMMAMISH PARKWAY SE

PLAN

SCALE IN FEET

0 20 40



ONE INCH AT FULL SCALE.
IF NOT, SCALE ACCORDINGLY

FILE NAME
BL1521075P19T03PS-01

JOB No.
554-1521-075 P19 T03

DATE
JUNE 2021

Parametrix
ENGINEERING · PLANNING · ENVIRONMENTAL SCIENCES

719 2ND AVENUE, SUITE 200 | SEATTLE, WA 98104
P 206.394.3700
WWW.PARAMETRIX.COM

PROJECT NAME

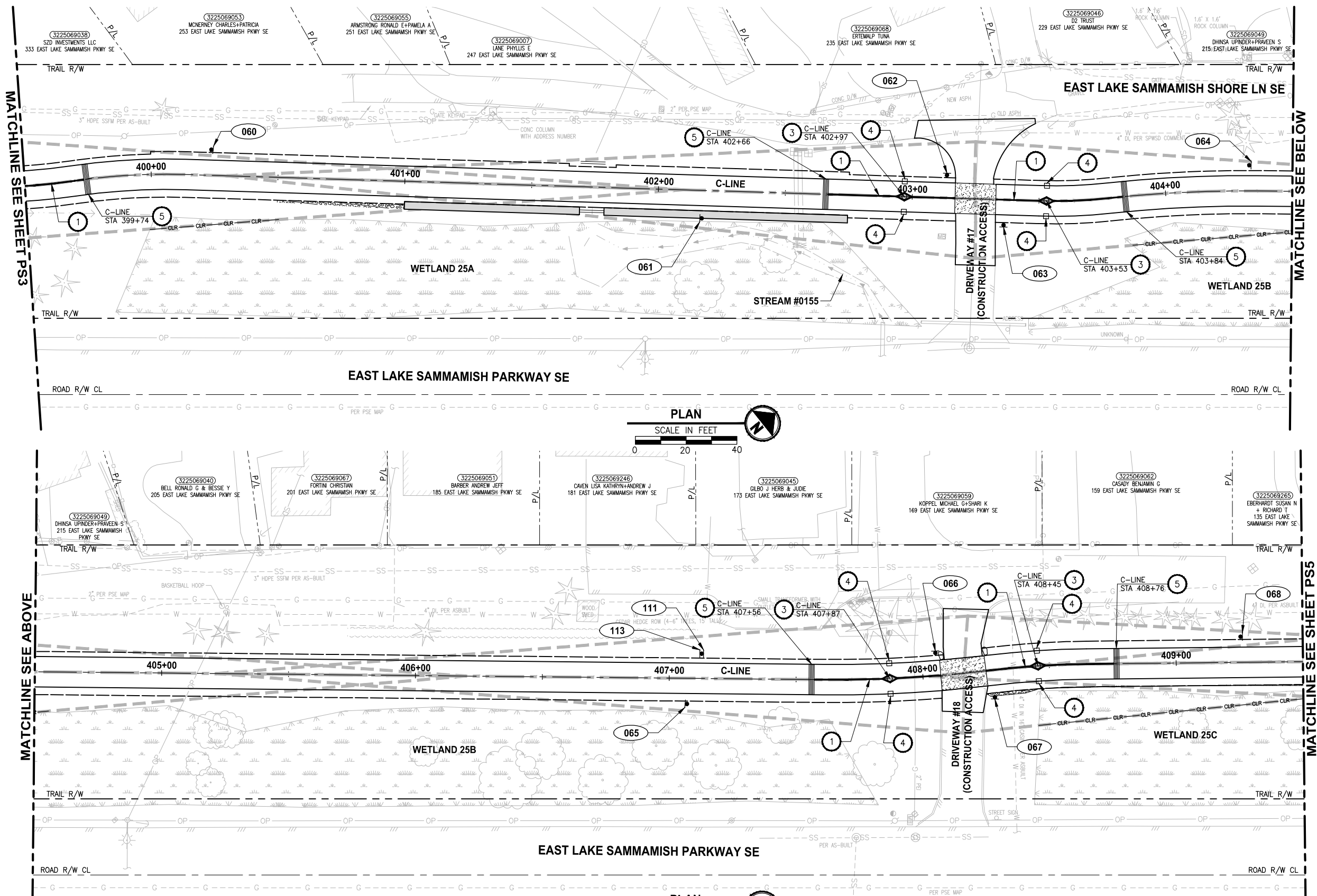
**EAST LAKE SAMMAMISH
MASTER PLAN TRAIL
SOUTH SAMMAMISH SEGMENT B - PHASE 2**
SAMMAMISH, WA

**PAVEMENT MARKING AND
SIGNING PLAN**

SHEET NO.
123 OF 213

PS3

PATH: U:\PSO\Projects\Clients\1521-075-ELST\99Sves\CADD\Phase 19\T03 Civil\Draw-Phase2\ PLOTTED BY: purgubut DATE: Monday, June 14, 2021 5:39:12 PM LAYOUT: PS4



PAVEMENT MARKING AND SIGNING CONSTRUCTION NOTES:

1. INSTALL BOLLARD STRIPING PER DETAIL **MD4** **MD6**
2. INSTALL PET WASTE STATION. SEE APPENDIX B OF SPECIFICATIONS FOR DETAILS.
3. INSTALL TOP LOCKING REMOVABLE BOLLARD PER DETAILS ON SHEET MD5.
4. INSTALL BOLLARD TYPE FIXED PER DETAILS ON SHEET MD7.
5. CONCRETE WARNING BAND PER DETAIL **MD6**
6. INSTALL CONCRETE WHEEL STOP PER WSDOT STD PLAN M-17.10-02 AND DETAIL ON SHEET PS9. SEE APPENDIX B OF SPECIFICATIONS.
7. INSTALL DETECTABLE WARNING SURFACE PER WSDOT STD PLAN F-45.10-02.
8. INSTALL SALVAGED MAILBOX ON NEW POST PER WSDOT STANDARD PLAN H-70.20-01. LOCATION TO BE REVIEWED BY POSTMASTER.
9. INSTALL TRASH RECEPTACLE, SEE APPENDIX B OF SPECIFICATIONS.
10. INSTALL 4" WHITE PAINT LINES PER WSDOT STD PLAN M-17.10-02, 45 DEGREE STALL ARRANGEMENT.
11. INSTALL TYPE 1S TRAFFIC ARROW PER WSDOT STD PLAN M-24.40-02.

LEGEND:

XXX SIGN, SEE SHEET PS11 FOR SIGN SCHEDULE.

14.5' X 29.5' SIGHT DISTANCE TRIANGLE FOR STOP CONTROLLED INTERSECTION ON DRIVEWAYS PER COS STD FIG 02-19A

GENERAL NOTES:

1. FOR SIGN REMOVAL, SEE SP SHEETS.
2. STATION CALLOUTS ARE MEASURED TO THE CENTER OF WARNING BAND AND BOLLARDS.

CITY OF SAMMAMISH PUBLIC WORKS DEVELOPMENT REVIEW

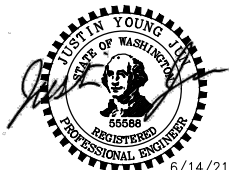
These drawings have been reviewed for compliance with City of Sammamish Clearing and Grading and Stormwater requirements and also in accordance with the requirements as established in the Settlement Agreement between King County vs. City of Sammamish No. C17-0921 JCC and King County vs. City of Sammamish No. 17-2-29922-7 SEA and have been deemed ACCEPTABLE. The reviewer accepts no responsibility for any errors and/or omissions made by the preparer of these drawings.

17 February 2022

CITY OF SAMMAMISH APPROVAL

City Engineer	Date
Community Development	Date

CONFORMED DRAWINGS



Parametrix
ENGINEERING · PLANNING · ENVIRONMENTAL SCIENCES

719 2ND AVENUE, SUITE 200 | SEATTLE, WA 98104
P 206.394.3700
WWW.PARAMETRIX.COM

PROJECT NAME
**EAST LAKE SAMMAMISH
MASTER PLAN TRAIL
SOUTH SAMMAMISH SEGMENT B - PHASE 2**
SAMMAMISH, WA

**PAVEMENT MARKING AND
SIGNING PLAN**

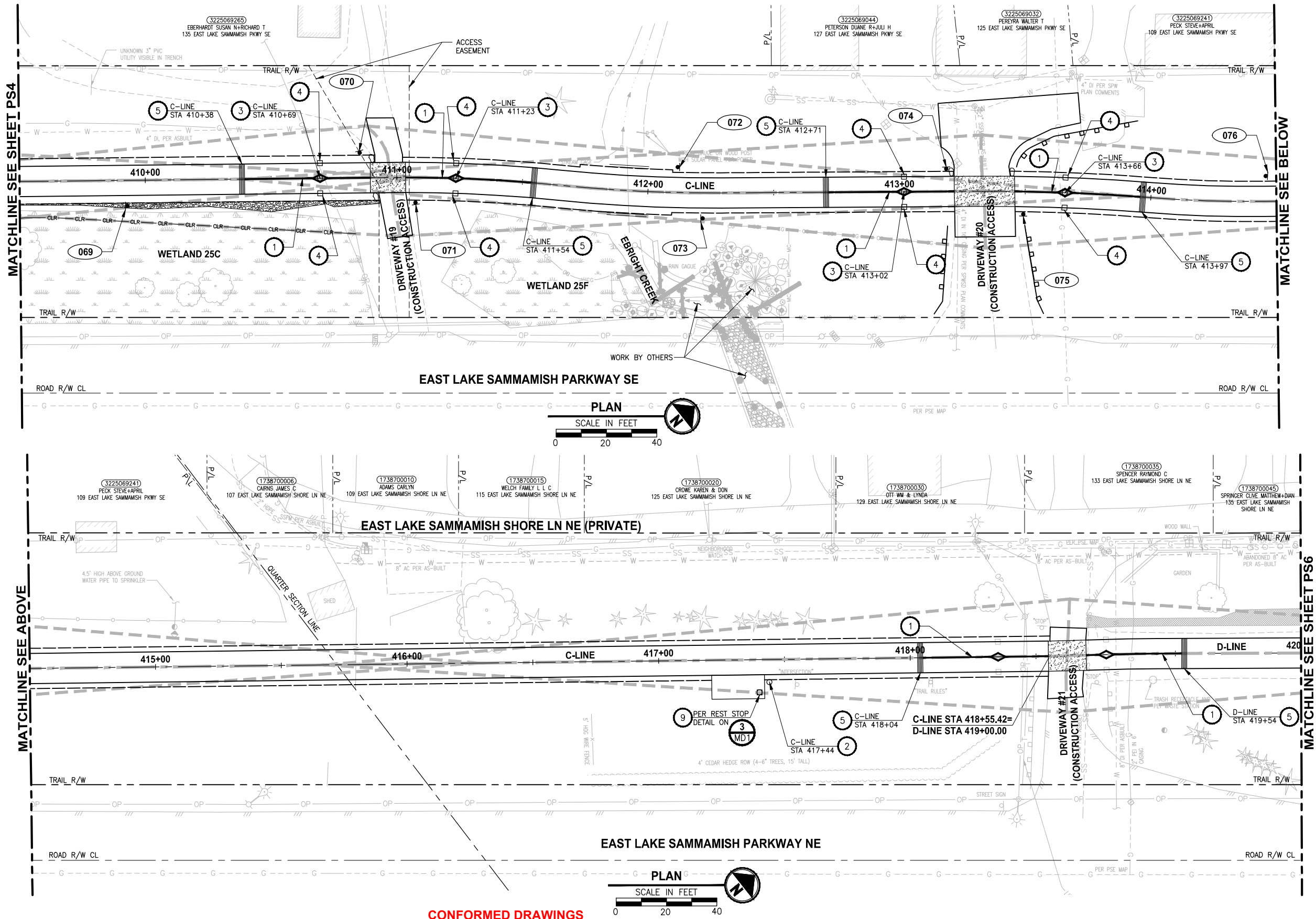
SHEET NO.
124 OF 213

PS4

REVISIONS	DATE	BY	DESIGNED
			J. JUN
			B. PURGANAN
			Y. HO
			J. BAILEY

ONE INCH AT FULL SCALE.
IF NOT, SCALE ACCORDINGLY
FILE NAME
BL1521075P19T03PS-01
JOB No.
554-1521-075 P19 T03
DATE
JUNE 2021

PATH: U:\P50\Projects\Clients\1521-KingCo\554-1521-075-ELST\99S\es\CADD\Phase 19\T03 Cvt\Draw-Phase2\ PLOTTED BY: purgbut DATE: Monday, June 14, 2021 5:39:28 PM LAYOUT: PS5



PAVEMENT MARKING AND SIGNING CONSTRUCTION NOTES:

1. INSTALL BOLLARD STRIPING PER DETAIL **MD4** **MD6**
2. INSTALL PET WASTE STATION. SEE APPENDIX B OF SPECIFICATIONS FOR DETAILS.
3. INSTALL TOP LOCKING REMOVABLE BOLLARD PER DETAILS ON SHEET MD5.
4. INSTALL BOLLARD TYPE FIXED PER DETAILS ON SHEET MD7.
5. CONCRETE WARNING BAND PER DETAIL **MD6**
6. INSTALL CONCRETE WHEEL STOP PER WSDOT STD PLAN M-17.10-02 AND DETAIL ON SHEET PS9. SEE APPENDIX B OF SPECIFICATIONS.
7. INSTALL DETECTABLE WARNING SURFACE PER WSDOT STD PLAN F-45.10-02.
8. INSTALL SALVAGED MAILBOX ON NEW POST PER WSDOT STANDARD PLAN H-70.20-01. LOCATION TO BE REVIEWED BY POSTMASTER.
9. INSTALL TRASH RECEPTACLE, SEE APPENDIX B OF SPECIFICATIONS.
10. INSTALL 4" WHITE PAINT LINES PER WSDOT STD PLAN M-17.10-02, 45 DEGREE STALL ARRANGEMENT.
11. INSTALL TYPE 1S TRAFFIC ARROW PER WSDOT STD PLAN M-24.40-02.

LEGEND:

XXX SIGN, SEE SHEET PS11 FOR SIGN SCHEDULE.

14.5' X 29.5' SIGHT DISTANCE TRIANGLE FOR STOP CONTROLLED INTERSECTION ON DRIVEWAYS PER COS STD FIG 02-19A

GENERAL NOTES:

1. FOR SIGN REMOVAL, SEE SP SHEETS.
2. STATION CALLOUTS ARE MEASURED TO THE CENTER OF WARNING BAND AND BOLLARDS.

CITY OF SAMMAMISH PUBLIC WORKS DEVELOPMENT REVIEW

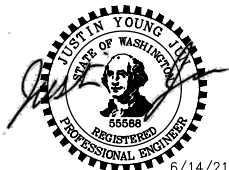
These drawings have been reviewed for compliance with City of Sammamish Clearing and Grading and Stormwater requirements and also in accordance with the requirements as established in the Settlement Agreement between King County vs. City of Sammamish No. C17-0921 JCC and King County vs. City of Sammamish No. 17-2-29922-7 SEA and have been deemed ACCEPTABLE. The reviewer accepts no responsibility for any errors and/or omissions made by the preparer of these drawings.

17 February 2022

CITY OF SAMMAMISH APPROVAL

City Engineer	Date
Community Development	Date

CONFORMED DRAWINGS



ONE INCH AT FULL SCALE. IF NOT, SCALE ACCORDINGLY.
FILE NAME: BL1521075P19T03PS-01
JOB No.: 554-1521-075 P19 T03
DATE: JUNE 2021

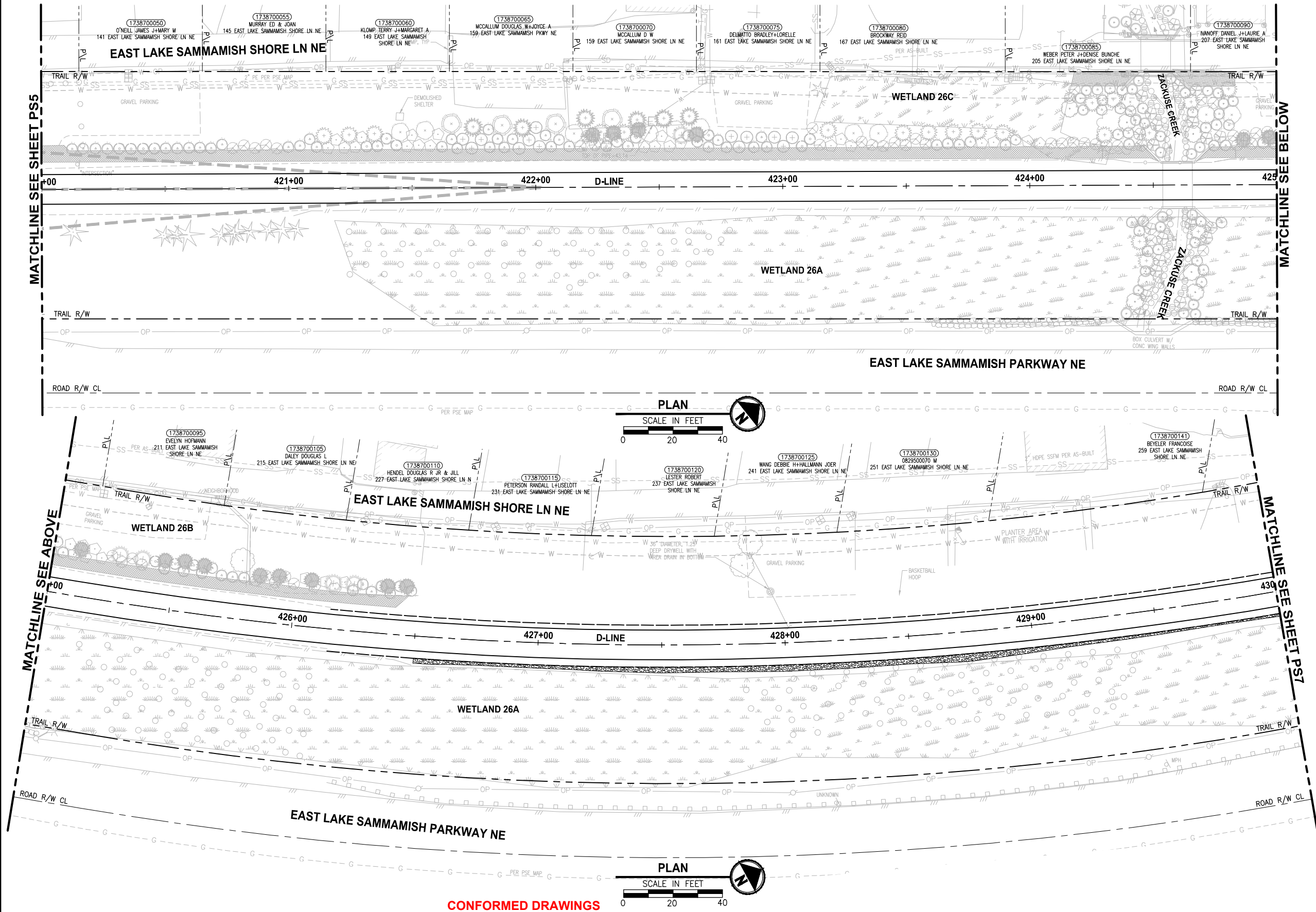
Parametrix
ENGINEERING · PLANNING · ENVIRONMENTAL SCIENCES
719 2ND AVENUE, SUITE 200 | SEATTLE, WA 98104
P 206.394.3700
WWW.PARAMETRIX.COM

PROJECT NAME
EAST LAKE SAMMAMISH MASTER PLAN TRAIL SOUTH SAMMAMISH SEGMENT B - PHASE 2
SAMMAMISH, WA

PAVEMENT MARKING AND SIGNING PLAN

SHEET NO.
125 OF 213
PS5

PATH: U:\PSO\Projects\Clients\1521-KingCo\554-1521-075-ELST\99Sves\CADD\Phase 19\T03 Civil\Draw-Phase2\ PLOTTED BY: purgubut DATE: Monday, June 14, 2021 5:39:50 PM LAYOUT: PS6



**PAVEMENT MARKING AND SIGNING
CONSTRUCTION NOTES:**

1. INSTALL BOLLARD STRIPING PER DETAIL **1** **MD4** **1** **MD6**
2. INSTALL PET WASTE STATION. SEE APPENDIX B OF SPECIFICATIONS FOR DETAILS.
3. INSTALL TOP LOCKING REMOVABLE BOLLARD PER DETAILS ON SHEET MD5.
4. INSTALL BOLLARD TYPE FIXED PER DETAILS ON SHEET MD7.
5. CONCRETE WARNING BAND PER DETAIL **2** **MD6**
6. INSTALL CONCRETE WHEEL STOP PER WSDOT STD PLAN M-17.10-02 AND DETAIL ON SHEET PS9. SEE APPENDIX B OF SPECIFICATIONS.
7. INSTALL DETECTABLE WARNING SURFACE PER WSDOT STD PLAN F-45.10-02.
8. INSTALL SALVAGED MAILBOX ON NEW POST PER WSDOT STANDARD PLAN H-70.20-01. LOCATION TO BE REVIEWED BY POSTMASTER.
9. INSTALL TRASH RECEPTACLE, SEE APPENDIX B OF SPECIFICATIONS.
10. INSTALL 4" WHITE PAINT LINES PER WSDOT STD PLAN M-17.10-02, 45 DEGREE STALL ARRANGEMENT.
11. INSTALL TYPE 1S TRAFFIC ARROW PER WSDOT STD PLAN M-24.40-02.

LEGEND:

XXX SIGN, SEE SHEET PS11 FOR SIGN SCHEDULE.

14.5' X 295' SIGHT DISTANCE TRIANGLE FOR STOP CONTROLLED INTERSECTION ON DRIVEWAYS PER COS STD FIG 02-19A

GENERAL NOTES:

1. FOR SIGN REMOVAL, SEE SP SHEETS.
2. STATION CALLOUTS ARE MEASURED TO THE CENTER OF WARNING BAND AND BOLLARDS.

**CITY OF SAMMAMISH PUBLIC WORKS
DEVELOPMENT REVIEW**

These drawings have been reviewed for compliance with City of Sammamish Clearing and Grading and Stormwater requirements and also in accordance with the requirements as established in the Settlement Agreement between King County vs. City of Sammamish No. C17-0921 JCC and King County vs. City of Sammamish No. 17-2-29922-7 SEA and have been deemed ACCEPTABLE. The reviewer accepts no responsibility for any errors and/or omissions made by the preparer of these drawings.

17 February 2022

CITY OF SAMMAMISH APPROVAL

City Engineer	Date
Community Development	Date

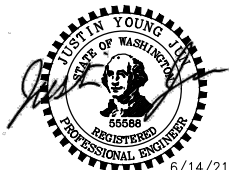
REVISIONS	DATE	BY	DESIGNED
			J. JUN
			B. PURGANAN
			CHECKED Y. HO
			APPROVED J. BAILEY

ONE INCH AT FULL SCALE.
IF NOT, SCALE ACCORDINGLY

FILE NAME
BL1521075P19T03PS-02

JOB No.
554-1521-075 P19 T03

DATE
JUNE 2021



Parametrix
ENGINEERING · PLANNING · ENVIRONMENTAL SCIENCES

719 2ND AVENUE, SUITE 200 | SEATTLE, WA 98104
P 206.394.3700
WWW.PARAMETRIX.COM

PROJECT NAME

**EAST LAKE SAMMAMISH
MASTER PLAN TRAIL
SOUTH SAMMAMISH SEGMENT B - PHASE 2**

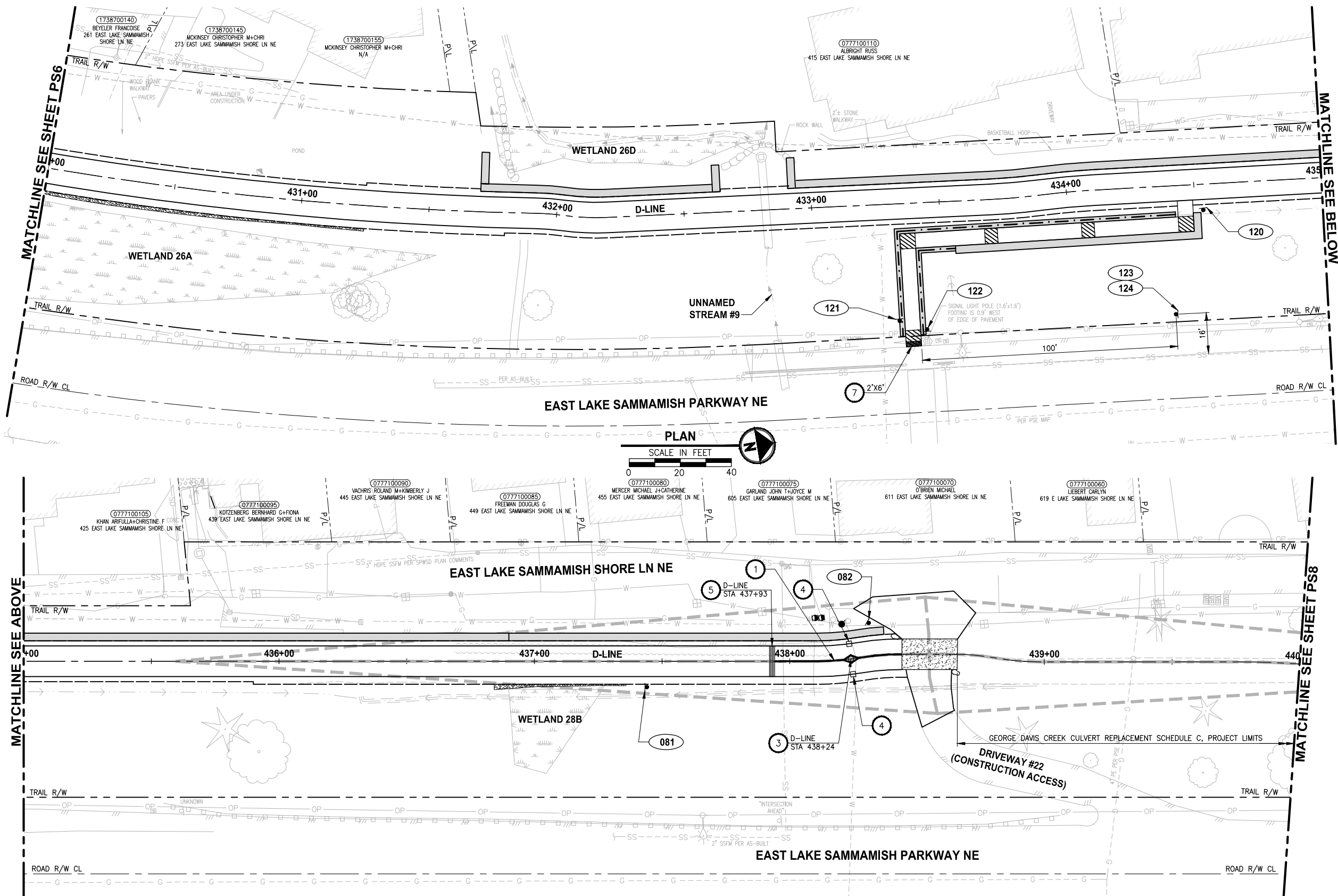
SAMMAMISH, WA

**PAVEMENT MARKING AND
SIGNING PLAN**

SHEET NO.
126 OF 213

PS6

PATH: U:\P50\Projects\Clients\1521-KingCo\554-1521-075-ELST-99S\es\CADD\Phase 19\T03 Civil\Draw-Phase2\ LAYOUT: PS7 PLOTTED BY: purgubut DATE: Monday, June 14, 2021 5:39:57 PM



**PAVEMENT MARKING AND SIGNING
CONSTRUCTION NOTES:**

1. INSTALL BOLLARD STRIPING PER DETAIL **1** **MD4** **1** **MD6**
2. INSTALL PET WASTE STATION. SEE APPENDIX B OF SPECIFICATIONS FOR DETAILS.
3. INSTALL TOP LOCKING REMOVABLE BOLLARD PER DETAILS ON SHEET MD5.
4. INSTALL BOLLARD TYPE FIXED PER DETAILS ON SHEET MD7.
5. CONCRETE WARNING BAND PER DETAIL **2** **MD6**
6. INSTALL CONCRETE WHEEL STOP PER WSDOT STD PLAN M-17.10-02 AND DETAIL ON SHEET PS9. SEE APPENDIX B OF SPECIFICATIONS.
7. INSTALL DETECTABLE WARNING SURFACE PER WSDOT STD PLAN F-45.10-02.
8. INSTALL SALVAGED MAILBOX ON NEW POST PER WSDOT STANDARD PLAN H-70.20-01. LOCATION TO BE REVIEWED BY POSTMASTER.
9. INSTALL TRASH RECEPTACLE, SEE APPENDIX B OF SPECIFICATIONS.
10. INSTALL 4" WHITE PAINT LINES PER WSDOT STD PLAN M-17.10-02, 45 DEGREE STALL ARRANGEMENT.
11. INSTALL TYPE 1S TRAFFIC ARROW PER WSDOT STD PLAN M-24.40-02.

LEGEND:

XXX SIGN, SEE SHEET PS11 FOR SIGN SCHEDULE.

14.5' X 295' SIGHT DISTANCE TRIANGLE FOR STOP CONTROLLED INTERSECTION ON DRIVEWAYS PER COS STD FIG 02-19A

GENERAL NOTES:

1. FOR SIGN REMOVAL, SEE SP SHEETS.
2. STATION CALLOUTS ARE MEASURED TO THE CENTER OF WARNING BAND AND BOLLARDS.

**CITY OF SAMMAMISH PUBLIC WORKS
DEVELOPMENT REVIEW**

These drawings have been reviewed for compliance with City of Sammamish Clearing and Grading and Stormwater requirements and also in accordance with the requirements as established in the Settlement Agreement between King County vs. City of Sammamish No. C17-0921 JCC and King County vs. City of Sammamish No. 17-2-29922-7 SEA and have been deemed ACCEPTABLE. The reviewer accepts no responsibility for any errors and/or omissions made by the preparer of these drawings.

17 February 2022

CITY OF SAMMAMISH APPROVAL

City Engineer	Date
Community Development	Date

CONFORMED DRAWINGS

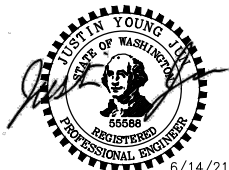
REVISIONS	DATE	BY	DESIGNED
			J. JUN
			B. PURGANAN
			CHECKED Y. HO
			APPROVED J. BAILEY

ONE INCH AT FULL SCALE.
IF NOT, SCALE ACCORDINGLY

FILE NAME
BL1521075P19T03PS-02

JOB No.
554-1521-075 P19 T03

DATE
JUNE 2021



Parametrix
ENGINEERING · PLANNING · ENVIRONMENTAL SCIENCES

719 2ND AVENUE, SUITE 200 | SEATTLE, WA 98104
P 206.394.3700
WWW.PARAMETRIX.COM

PROJECT NAME

**EAST LAKE SAMMAMISH
MASTER PLAN TRAIL
SOUTH SAMMAMISH SEGMENT B - PHASE 2**

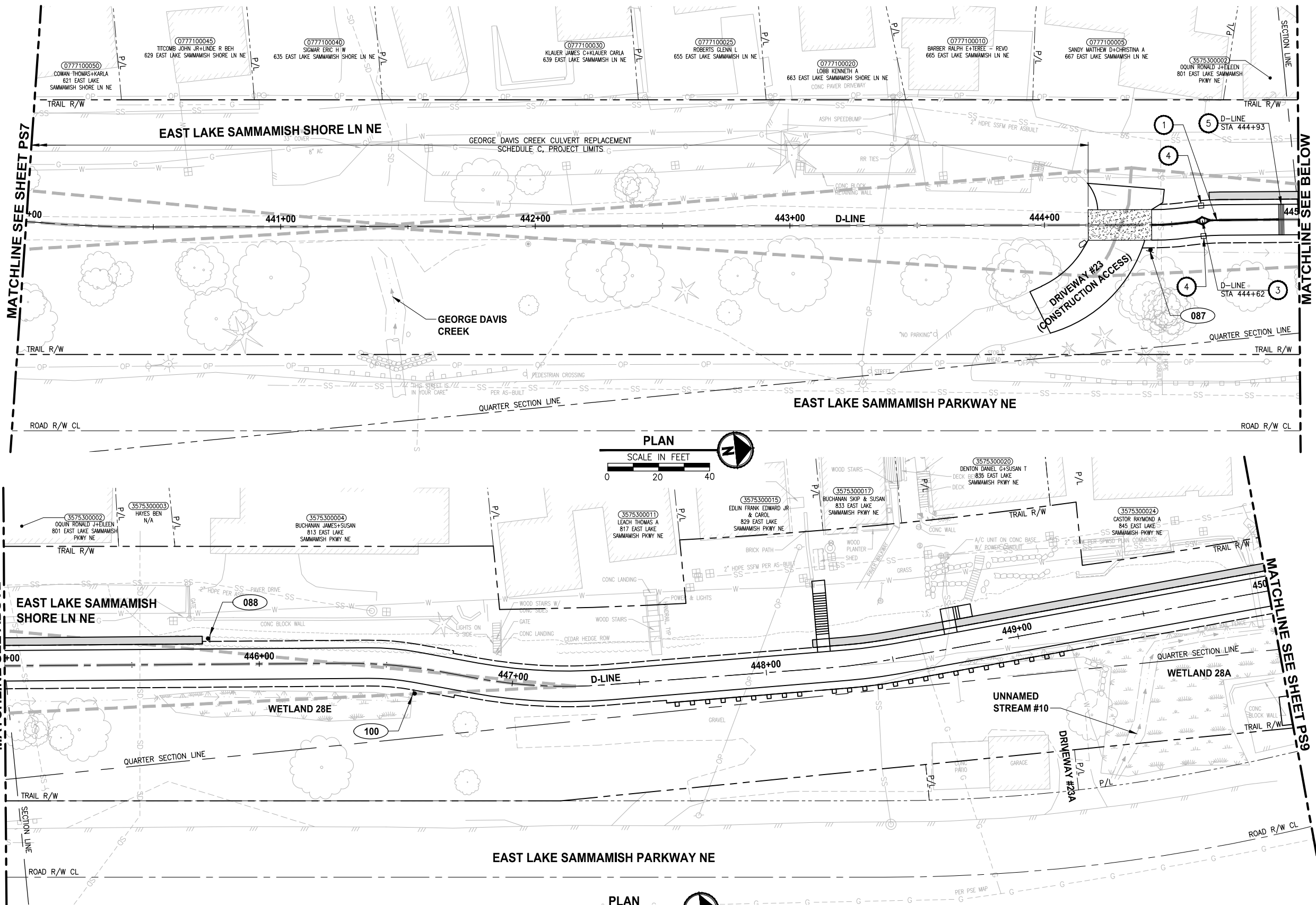
SAMMAMISH, WA

**PAVEMENT MARKING AND
SIGNING PLAN**

SHEET NO.
127 OF 213

PS7

PATH: U:\PS0\Projects\Clients\1521-KingCo\554-1521-075-ELST\99Ses\CADD\Phase 19\T03_Civil\Draw-Phase2\ LAYOUT: PS8 PLOTTED BY: purganbut DATE: Monday, June 14, 2021 5:40:07 PM



PAVEMENT MARKING AND SIGNING CONSTRUCTION NOTES:

1. INSTALL BOLLARD STRIPING PER DETAIL **1** **MD4** **1** **MD6**
2. INSTALL PET WASTE STATION. SEE APPENDIX B OF SPECIFICATIONS FOR DETAILS.
3. INSTALL TOP LOCKING REMOVABLE BOLLARD PER DETAILS ON SHEET MD5.
4. INSTALL BOLLARD TYPE FIXED PER DETAILS ON SHEET MD7.
5. CONCRETE WARNING BAND PER DETAIL **2** **MD6**
6. INSTALL CONCRETE WHEEL STOP PER WSDOT STD PLAN M-17.10-02 AND DETAIL ON SHEET PS9. SEE APPENDIX B OF SPECIFICATIONS.
7. INSTALL DETECTABLE WARNING SURFACE PER WSDOT STD PLAN F-45.10-02.
8. INSTALL SALVAGED MAILBOX ON NEW POST PER WSDOT STANDARD PLAN H-70.20-01. LOCATION TO BE REVIEWED BY POSTMASTER.
9. INSTALL TRASH RECEPTACLE, SEE APPENDIX B OF SPECIFICATIONS.
10. INSTALL 4" WHITE PAINT LINES PER WSDOT STD PLAN M-17.10-02, 45 DEGREE STALL ARRANGEMENT.
11. INSTALL TYPE 1S TRAFFIC ARROW PER WSDOT STD PLAN M-24.40-02.

LEGEND:

XXX SIGN, SEE SHEET PS11 FOR SIGN SCHEDULE.

14.5' X 29.5' SIGHT DISTANCE TRIANGLE FOR STOP CONTROLLED INTERSECTION ON DRIVEWAYS PER COS STD FIG 02-19A

GENERAL NOTES:

1. FOR SIGN REMOVAL, SEE SP SHEETS.
2. STATION CALLOUTS ARE MEASURED TO THE CENTER OF WARNING BAND AND BOLLARDS.

CITY OF SAMMAMISH PUBLIC WORKS DEVELOPMENT REVIEW

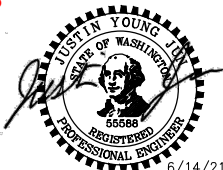
These drawings have been reviewed for compliance with City of Sammamish Clearing and Grading and Stormwater requirements and also in accordance with the requirements as established in the Settlement Agreement between King County vs. City of Sammamish No. C17-0921 JCC and King County vs. City of Sammamish No. 17-2-29922-7 SEA and have been deemed ACCEPTABLE. The reviewer accepts no responsibility for any errors and/or omissions made by the preparer of these drawings.

17 February 2022

CITY OF SAMMAMISH APPROVAL

City Engineer	Date
Community Development	Date

CONFORMED DRAWINGS



ONE INCH AT FULL SCALE. IF NOT, SCALE ACCORDINGLY
FILE NAME: BL1521075P19T03PS-02
JOB No.: 554-1521-075 P19 T03
DATE: JUNE 2021

Parametrix
ENGINEERING · PLANNING · ENVIRONMENTAL SCIENCES
719 2ND AVENUE, SUITE 200 | SEATTLE, WA 98104
P 206.394.3700
WWW.PARAMETRIX.COM

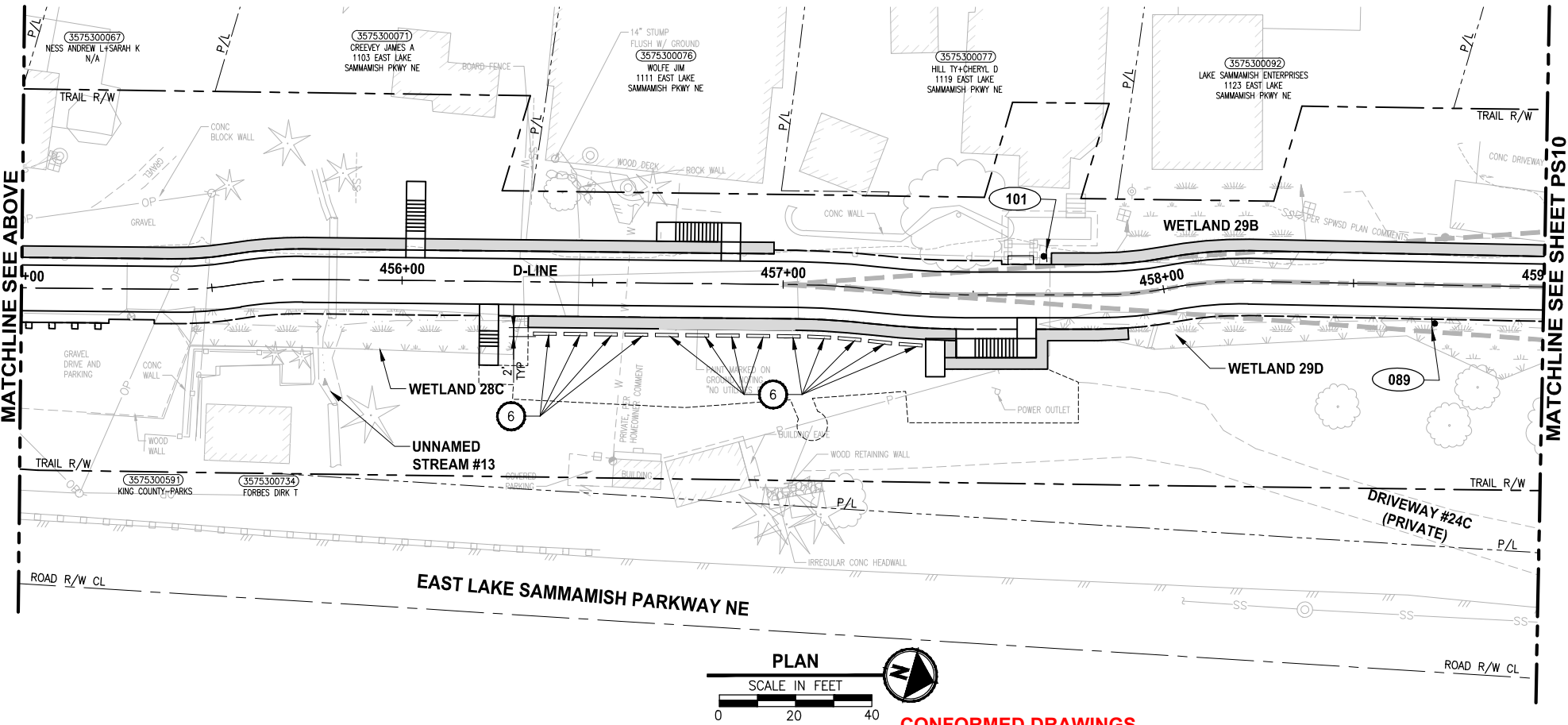
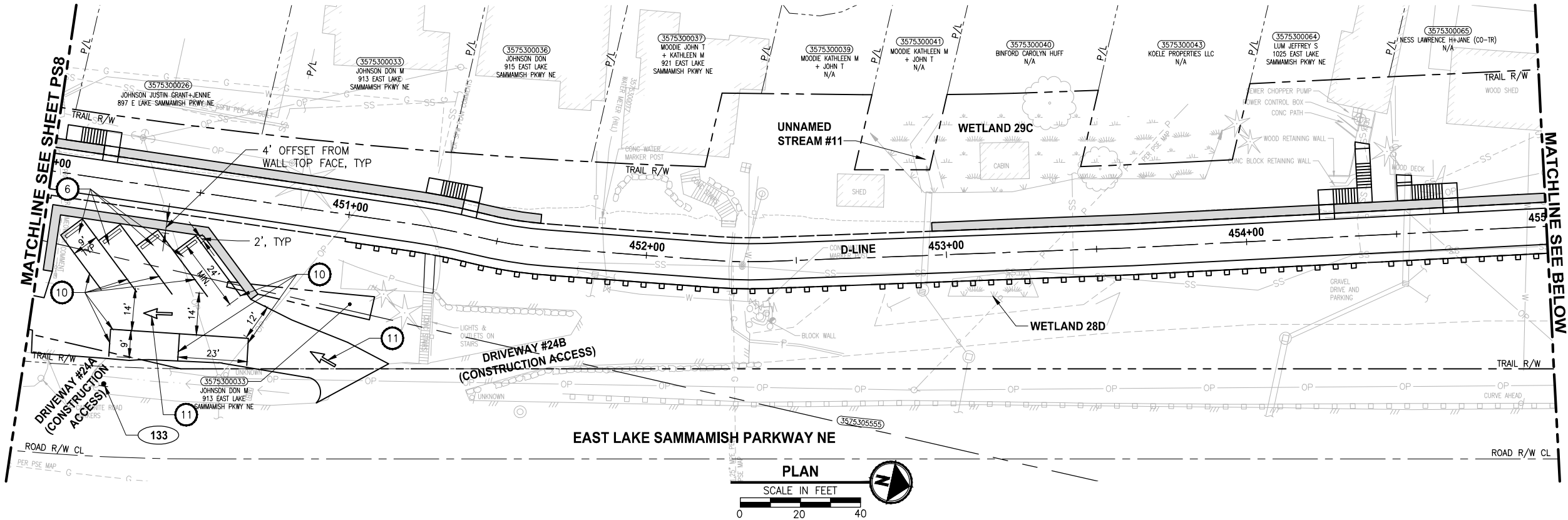
PROJECT NAME
EAST LAKE SAMMAMISH MASTER PLAN TRAIL SOUTH SAMMAMISH SEGMENT B - PHASE 2
SAMMAMISH, WA

PAVEMENT MARKING AND SIGNING PLAN

SHEET NO.
128 OF 213
PS8

REVISIONS	DATE	BY	DESIGNED
			J. JUN
			DRAWN
			B. PURGANAN
			CHECKED
			Y. HO
			APPROVED
			J. BAILEY

PATH: U:\PS0\Projects\Clients\1521-KingCo\554-1521-075-ELST\99Sves\CADD\Phase 19\T03_Civil\Draw-Phase2\ PLOTTED BY: purgubut DATE: Monday, June 14, 2021 5:40:19 PM LAYOUT: PS9



CONFORMED DRAWINGS

PAVEMENT MARKING AND SIGNING
CONSTRUCTION NOTES:

- 1 INSTALL BOLLARD STRIPING PER DETAIL **1** **MD4** **1** **MD6**
- 2 INSTALL PET WASTE STATION. SEE APPENDIX B OF SPECIFICATIONS FOR DETAILS.
- 3 INSTALL TOP LOCKING REMOVABLE BOLLARD PER DETAILS ON SHEET MD5.
- 4 INSTALL BOLLARD TYPE FIXED PER DETAILS ON SHEET MD7.
- 5 CONCRETE WARNING BAND PER DETAIL **2** **MD6**
- 6 INSTALL CONCRETE WHEEL STOP PER WSDOT STD PLAN M-17.10-02 AND DETAIL ON SHEET PS9. SEE APPENDIX B OF SPECIFICATIONS.
- 7 INSTALL DETECTABLE WARNING SURFACE PER WSDOT STD PLAN F-45.10-02.
- 8 INSTALL SALVAGED MAILBOX ON NEW POST PER WSDOT STANDARD PLAN H-70.20-01. LOCATION TO BE REVIEWED BY POSTMASTER.
- 9 INSTALL TRASH RECEPTACLE, SEE APPENDIX B OF SPECIFICATIONS.
- 10 INSTALL 4" WHITE PAINT LINES PER WSDOT STD PLAN M-17.10-02, 45 DEGREE STALL ARRANGEMENT.
- 11 INSTALL TYPE 1S TRAFFIC ARROW PER WSDOT STD PLAN M-24.40-02.

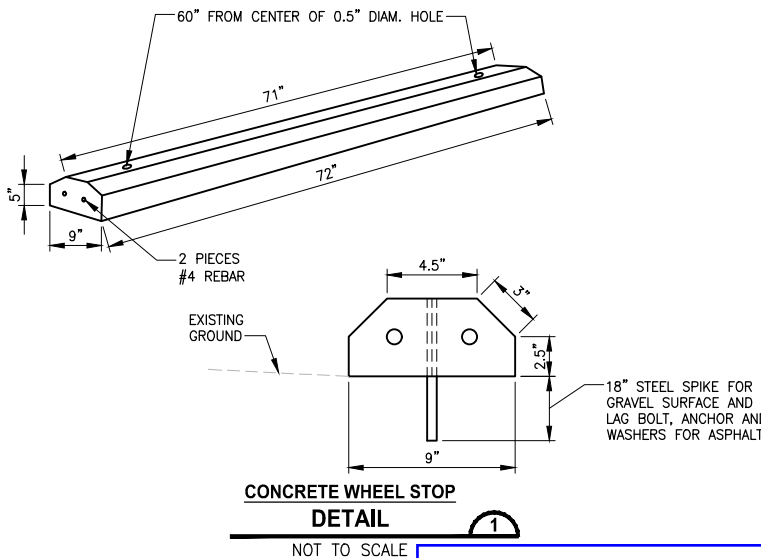
LEGEND:

XXX SIGN, SEE SHEET PS11 FOR SIGN SCHEDULE.

14.5' X 295' SIGHT DISTANCE TRIANGLE FOR STOP CONTROLLED INTERSECTION ON DRIVEWAYS PER COS STD FIG 02-19A

GENERAL NOTES:

1. FOR SIGN REMOVAL, SEE SP SHEETS.
2. STATION CALLOUTS ARE MEASURED TO THE CENTER OF WARNING BAND AND BOLLARDS.



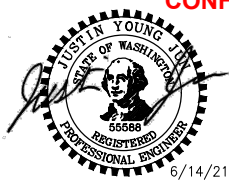
CITY OF SAMMAMISH PUBLIC WORKS
DEVELOPMENT REVIEW

These drawings have been reviewed for compliance with City of Sammamish Clearing and Grading and Stormwater requirements and also in accordance with the requirements as established in the Settlement Agreement between King County vs. City of Sammamish No. C-17-0921 JCC and King County vs. City of Sammamish No. 17-2-29922-7 SEA and have been deemed ACCEPTABLE. The reviewer accepts no responsibility for any errors and/or omissions made by the preparer of these drawings.

17 February 2022

REVISIONS	DATE	BY	DESIGNED
			J. JUN
			B. PURGANAN
			CHECKED Y. HO
			APPROVED J. BAILEY

ONE INCH AT FULL SCALE.
IF NOT, SCALE ACCORDINGLY
FILE NAME
BL1521075P19T03PS-02
JOB No.
554-1521-075 P19 T03
DATE
JUNE 2021



Parametrix
ENGINEERING · PLANNING · ENVIRONMENTAL SCIENCES

719 2ND AVENUE, SUITE 200 | SEATTLE, WA 98104
P 206.394.3700
WWW.PARAMETRIX.COM

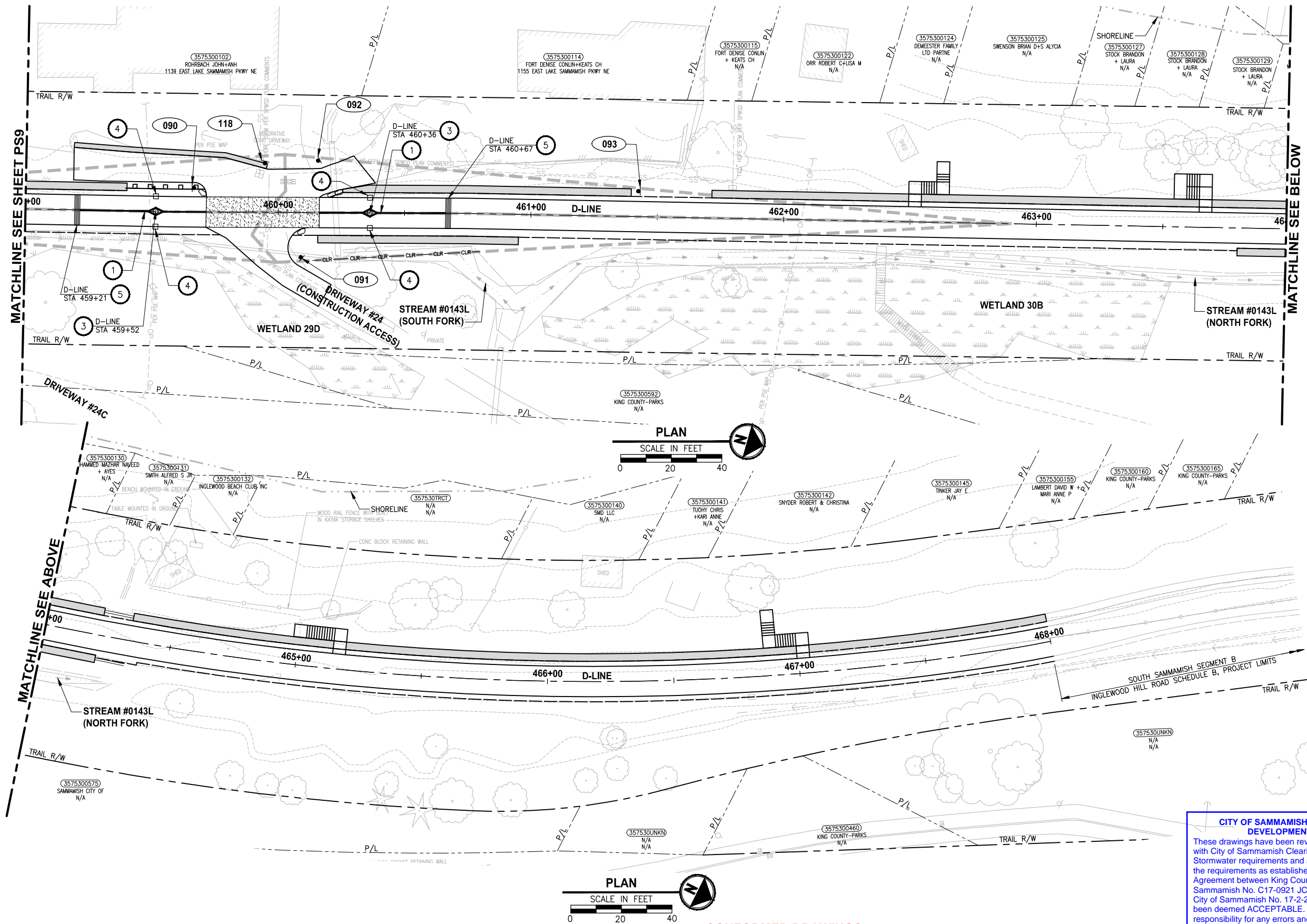
PROJECT NAME
EAST LAKE SAMMAMISH
MASTER PLAN TRAIL
SOUTH SAMMAMISH SEGMENT B - PHASE 2
SAMMAMISH, WA

PAVEMENT MARKING AND
SIGNING PLAN

SHEET NO.
129 OF 213

PS9

PATH: U:\PSO\Projects\Clients\1521-KingCo\554-1521-075-ELST\995vcs\CADD\Phase 19\T03 Civil\Eng-Phase2\ LAYOUT: PS10 PLOTTED BY: purganat DATE: Monday, June 14, 2021 5:40:28 PM



PAVEMENT MARKING AND SIGNING CONSTRUCTION NOTES:

1. INSTALL BOLLARD STRIPING PER DETAIL **MD4** **MD6**
2. INSTALL PET WASTE STATION. SEE APPENDIX B OF SPECIFICATIONS FOR DETAILS.
3. INSTALL TOP LOCKING REMOVABLE BOLLARD PER DETAILS ON SHEET MD5.
4. INSTALL BOLLARD TYPE FIXED PER DETAILS ON SHEET MD7.
5. CONCRETE WARNING BAND PER DETAIL **MD6**
6. INSTALL CONCRETE WHEEL STOP PER WSDOT STD PLAN M-17.10-02 AND DETAIL ON SHEET PS9. SEE APPENDIX B OF SPECIFICATIONS.
7. INSTALL DETECTABLE WARNING SURFACE PER WSDOT STD PLAN F-45.10-02.
8. INSTALL SALVAGED MAILBOX ON NEW POST PER WSDOT STANDARD PLAN H-70.20-01. LOCATION TO BE REVIEWED BY POSTMASTER.
9. INSTALL TRASH RECEPTACLE, SEE APPENDIX B OF SPECIFICATIONS.
10. INSTALL 4" WHITE PAINT LINES PER WSDOT STD PLAN M-17.10-02, 45 DEGREE STALL ARRANGEMENT.
11. INSTALL TYPE 1S TRAFFIC ARROW PER WSDOT STD PLAN M-24.40-02.

LEGEND:

XXX SIGN, SEE SHEET PS11 FOR SIGN SCHEDULE.

14.5' X 29.5' SIGHT DISTANCE TRIANGLE FOR STOP CONTROLLED INTERSECTION ON DRIVEWAYS PER COS STD FIG 02-19A

GENERAL NOTES:

1. FOR SIGN REMOVAL, SEE SP SHEETS.
2. STATION CALLOUTS ARE MEASURED TO THE CENTER OF WARNING BAND AND BOLLARDS.

CITY OF SAMMAMISH PUBLIC WORKS DEVELOPMENT REVIEW

These drawings have been reviewed for compliance with City of Sammamish Clearing and Grading and Stormwater requirements and also in accordance with the requirements as established in the Settlement Agreement between King County vs. City of Sammamish No. C17-0921 JCC and King County vs. City of Sammamish No. 17-2-29922-7 SEA and have been deemed ACCEPTABLE. The reviewer accepts no responsibility for any errors and/or omissions made by the preparer of these drawings.

17 February 2022

CITY OF SAMMAMISH APPROVAL

City Engineer	Date
Community Development	Date

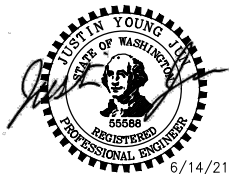
REVISIONS	DATE	BY	DESIGNED
			J. JUN
			DRAWN
			B. PURGANAN
			CHECKED
			Y. HO
			APPROVED
			J. BAILEY

ONE INCH AT FULL SCALE.
IF NOT, SCALE ACCORDINGLY

FILE NAME
BL1521075P19T03PS-02

JOB No.
554-1521-075 P19 T03

DATE
JUNE 2021



CONFORMED DRAWINGS

Parametrix
ENGINEERING · PLANNING · ENVIRONMENTAL SCIENCES

719 2ND AVENUE, SUITE 200 | SEATTLE, WA 98104
P 206.394.3700
WWW.PARAMETRIX.COM

PROJECT NAME
**EAST LAKE SAMMAMISH
MASTER PLAN TRAIL
SOUTH SAMMAMISH SEGMENT B - PHASE 2**
SAMMAMISH, WA

PAVEMENT MARKING AND SIGNING PLAN

SHEET NO.
130 OF 213

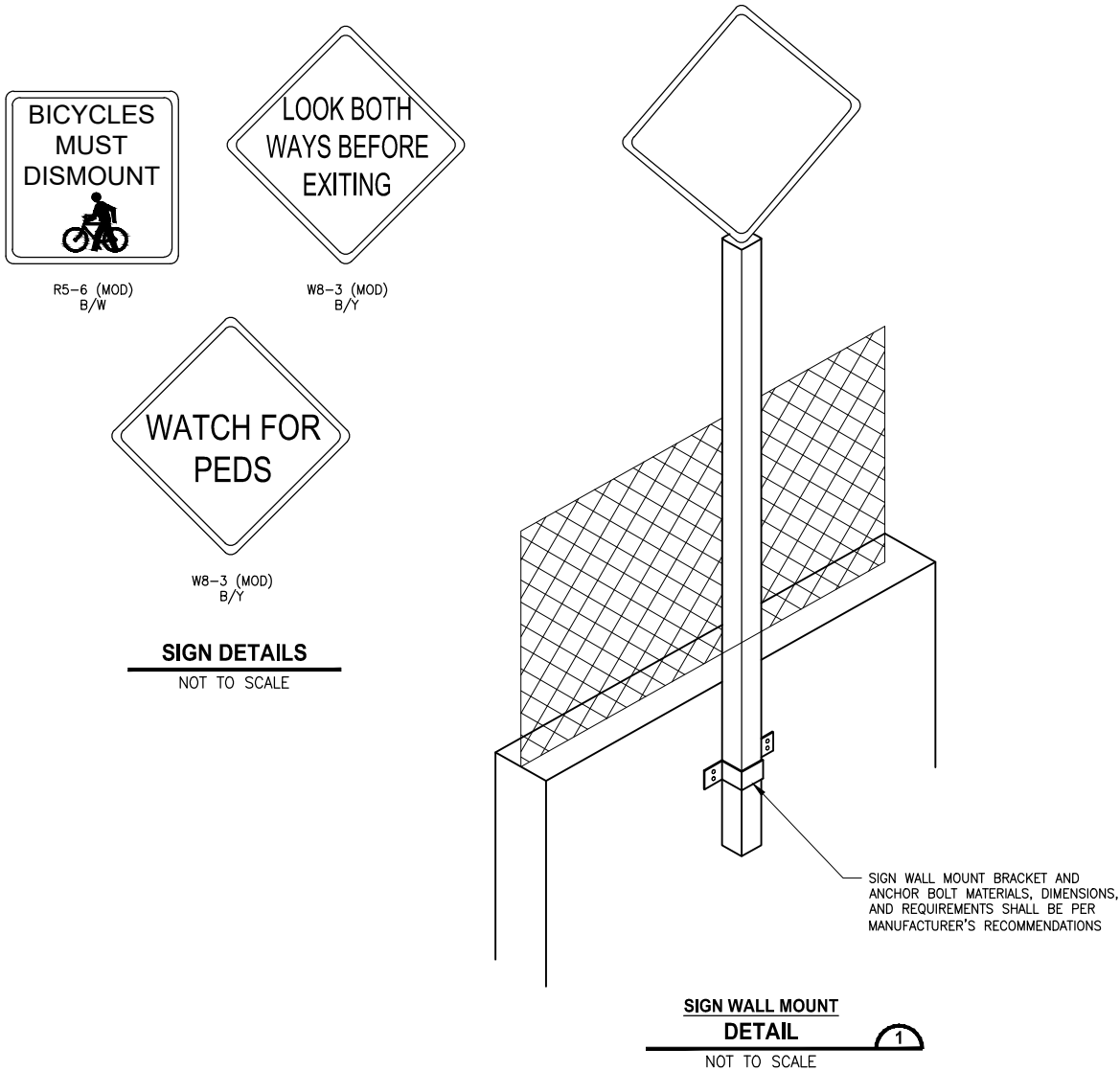
PS10

PATH: U:\P50\Projects\Clients\1521-KingCo\554-1521-075-ELST\99Sect\CADD\Phase 19\T03 Civil\Draw-Phase2\ LAYOUT: PS11 PLOTTED BY: purgubut DATE: Monday, June 14, 2021 5:40:33 PM

SIGN SCHEDULE								
SIGN NUMBER	LOCATION			DESCRIPTION	MUTCD SIGN	SIGN SIZE	POST SIZE/TYPE	REMARK
	LINE	STATION	OFFSET					
033	C-LINE	377+73	10.1' RT	INTERSECTION WARNING SYMBOL	W2-1	18" X 18"	2" STEEL SQUARE*	NEW SIGN AND POST
034	C-LINE	378+68	9.0' LT	STOP	R1-1	30" X 30"	2" STEEL SQUARE*	NEW SIGN AND POST
035	C-LINE	378+95	13.0' RT	STOP	R1-1	30" X 30"	2" STEEL SQUARE*	NEW SIGN AND POST. ENSURE TO PREVENT UNDERMINING OF THE FILL WALL #19 AND PROTECT EXISTING WATER LINE IN THE AREA DURING CONSTRUCTION OF SIGN FOUNDATION.
036	C-LINE	379+92	10.1' LT	INTERSECTION WARNING SYMBOL	W2-1	18" X 18"	2" STEEL SQUARE*	NEW SIGN AND POST
037	C-LINE	383+72	10.1' RT	INTERSECTION WARNING SYMBOL	W2-1	18" X 18"	2" STEEL SQUARE*	NEW SIGN AND POST
038	C-LINE	385+07	12.0' LT	STOP	R1-1	30" X 30"	2" STEEL SQUARE*	NEW SIGN AND POST. ENSURE TO PREVENT UNDERMINING OF THE FILL WALL #20 DURING CONSTRUCTION OF SIGN FOUNDATION.
039	C-LINE	385+44	10.0' RT	STOP	R1-1	30" X 30"	2" STEEL SQUARE*	NEW SIGN AND POST
040	C-LINE	386+39	10.1' LT	INTERSECTION WARNING SYMBOL	W2-1	18" X 18"	2" STEEL SQUARE*	NEW SIGN AND POST
041	C-LINE	389+19	10.1' RT	INTERSECTION WARNING SYMBOL	W2-1	18" X 18"	2" STEEL SQUARE*	NEW SIGN AND POST
042	C-LINE	390+15	9.0' LT	STOP	R1-1	30" X 30"	2" STEEL SQUARE*	NEW SIGN AND POST
043	C-LINE	390+41	9.0' RT	STOP	R1-1	30" X 30"	2" STEEL SQUARE*	NEW SIGN AND POST
044	C-LINE	391+15	10.1' LT	INTERSECTION WARNING SYMBOL	W2-1	18" X 18"	2" STEEL SQUARE*	NEW SIGN AND POST
045	C-LINE	390+97	10.1' RT	INTERSECTION WARNING SYMBOL	W2-1	18" X 18"	2" STEEL SQUARE*	NEW SIGN AND POST
046	C-LINE	391+72	9.0' LT	STOP	R1-1	30" X 30"	2" STEEL SQUARE*	NEW SIGN AND POST
047	C-LINE	391+95	9.0' RT	STOP	R1-1	30" X 30"	2" STEEL SQUARE*	NEW SIGN AND POST
048	C-LINE	392+65	10.1' LT	INTERSECTION WARNING SYMBOL	W2-1	18" X 18"	2" STEEL SQUARE*	NEW SIGN AND POST
049	C-LINE	392+51	10.1' RT	INTERSECTION WARNING SYMBOL	W2-1	18" X 18"	2" STEEL SQUARE*	NEW SIGN AND POST
050	C-LINE	393+14	10.0' LT	STOP	R1-1	30" X 30"	2" STEEL SQUARE*	NEW SIGN AND POST
051	C-LINE	393+42	9.0' RT	STOP	R1-1	30" X 30"	2" STEEL SQUARE*	NEW SIGN AND POST
052	C-LINE	394+41	10.1' LT	INTERSECTION WARNING SYMBOL	W2-1	18" X 18"	2" STEEL SQUARE*	NEW SIGN AND POST
053	C-LINE	394+40	10.1' RT	INTERSECTION WARNING SYMBOL	W2-1	18" X 18"	2" STEEL SQUARE*	NEW SIGN AND POST
054	C-LINE	395+70	9.0' LT	STOP	R1-1	30" X 30"	2" STEEL SQUARE*	NEW SIGN AND POST
055	C-LINE	395+90	9.0' RT	STOP	R1-1	30" X 30"	2" STEEL SQUARE*	NEW SIGN AND POST
056	C-LINE	396+90	10.1' LT	INTERSECTION WARNING SYMBOL	W2-1	18" X 18"	2" STEEL SQUARE*	NEW SIGN AND POST
057	C-LINE	398+03	10.1' RT	INTERSECTION WARNING SYMBOL	W2-1	18" X 18"	2" STEEL SQUARE*	NEW SIGN AND POST
058	C-LINE	398+98	9.0' LT	STOP	R1-1	30" X 30"	2" STEEL SQUARE*	NEW SIGN AND POST
059	C-LINE	399+27	10.0' RT	STOP	R1-1	30" X 30"	2" STEEL SQUARE*	NEW SIGN AND POST
060	C-LINE	400+23	10.1' LT	INTERSECTION WARNING SYMBOL	W2-1	18" X 18"	2" STEEL SQUARE*	NEW SIGN AND POST
061	C-LINE	402+17	11.0' RT	INTERSECTION WARNING SYMBOL	W2-1	18" X 18"	2" STEEL SQUARE*	NEW SIGN AND NEW POST MOUNTED ON FACE OF WALL. SEE SIGN WALL MOUNT DETAILS ON THIS SHEET.
062	C-LINE	403+13	9.0' LT	STOP	R1-1	30" X 30"	2" STEEL SQUARE*	NEW SIGN AND POST
063	C-LINE	403+36	10.0' RT	STOP	R1-1	30" X 30"	2" STEEL SQUARE*	NEW SIGN AND POST
064	C-LINE	404+33	10.1' LT	INTERSECTION WARNING SYMBOL	W2-1	18" X 18"	2" STEEL SQUARE*	NEW SIGN AND POST
065	C-LINE	407+07	10.1' RT	INTERSECTION WARNING SYMBOL	W2-1	18" X 18"	2" STEEL SQUARE*	NEW SIGN AND POST
066	C-LINE	408+06	9.0' LT	STOP	R1-1	30" X 30"	2" STEEL SQUARE*	NEW SIGN AND POST
067	C-LINE	408+27	10.8' RT	STOP	R1-1	30" X 30"	2" STEEL SQUARE*	NEW SIGN AND POST
068	C-LINE	409+25	10.1' LT	INTERSECTION WARNING SYMBOL	W2-1	18" X 18"	2" STEEL SQUARE*	NEW SIGN AND POST
069	C-LINE	409+93	10.1' RT	INTERSECTION WARNING SYMBOL	W2-1	18" X 18"	2" STEEL SQUARE*	NEW SIGN AND POST
070	C-LINE	410+85	10.0' LT	STOP	R1-1	30" X 30"	2" STEEL SQUARE*	NEW SIGN AND POST
071	C-LINE	411+07	10.0' RT	STOP	R1-1	30" X 30"	2" STEEL SQUARE*	NEW SIGN AND POST
072	C-LINE	412+12	10.1' LT	INTERSECTION WARNING SYMBOL	W2-1	18" X 18"	2" STEEL SQUARE*	NEW SIGN AND POST
073	C-LINE	412+22	10.1' RT	INTERSECTION WARNING SYMBOL	W2-1	18" X 18"	2" STEEL SQUARE*	NEW SIGN AND POST
074	C-LINE	413+19	9.0' LT	STOP	R1-1	30" X 30"	2" STEEL SQUARE*	NEW SIGN AND POST
075	C-LINE	413+49	9.0' RT	STOP	R1-1	30" X 30"	2" STEEL SQUARE*	NEW SIGN AND POST
076	C-LINE	414+46	10.1' LT	INTERSECTION WARNING SYMBOL	W2-1	18" X 18"	2" STEEL SQUARE*	NEW SIGN AND POST
081	D-LINE	437+44	10.1' RT	INTERSECTION WARNING SYMBOL	W2-1	18" X 18"	2" STEEL SQUARE*	NEW SIGN AND POST
082	D-LINE	438+33	13.0' LT	STOP	R1-1	30" X 30"	2" STEEL SQUARE*	NEW SIGN AND POST. ENSURE TO PREVENT UNDERMINING OF FILL WALL #30 DURING CONSTRUCTION OF SIGN FOUNDATION.
087	D-LINE	444+42	9.75' RT	STOP	R1-1	30" X 30"	2" STEEL SQUARE*	NEW SIGN AND POST
088	D-LINE	445+80	10.1' LT	INTERSECTION WARNING SYMBOL	W2-1	18" X 18"	2" STEEL SQUARE*	NEW SIGN AND POST
089	D-LINE	458+72	10.1' RT	INTERSECTION WARNING SYMBOL	W2-1	18" X 18"	2" STEEL SQUARE*	NEW SIGN AND POST
090	D-LINE	459+67	9.50' LT	STOP	R1-1	30" X 30"	2" STEEL SQUARE*	NEW SIGN AND POST
091	D-LINE	460+09	17.75' RT	STOP	R1-1	30" X 30"	2" STEEL SQUARE*	NEW SIGN AND POST
092	D-LINE	460+16	20.5' LT	STOP	R1-1	30" X 30"	2" STEEL SQUARE*	NEW SIGN AND POST
093	D-LINE	461+42	10.1' LT	INTERSECTION WARNING SYMBOL	W2-1	18" X 18"	2" STEEL SQUARE*	NEW SIGN AND POST
100	D-LINE	446+63	10.1' RT	WATCH FOR PEDS	W8-3 (MOD)	18" X 18"	2" STEEL SQUARE*	NEW SIGN AND POST. SEE SIGN DETAIL W8-3 (MOD)
101	D-LINE	457+69	10.1' LT	WATCH FOR PEDS	W8-3 (MOD)	18" X 18"	2" STEEL SQUARE*	NEW SIGN AND POST. SEE SIGN DETAIL W8-3 (MOD)

SIGN SCHEDULE								
SIGN NUMBER	LOCATION			DESCRIPTION	MUTCD SIGN	SIGN SIZE	POST SIZE/TYPE	REMARK
	LINE	STATION	OFFSET					
108	C-LINE	386+13	9.75' LT	PET LAW	CUSTOM	N/A	2" STEEL SQUARE*	NEW SIGN AND POST. SIGN TO BE PROVIDED BY THE OWNER.
109	C-LINE	386+13	9.75' LT	PET LAW	CUSTOM	N/A	N/A	NEW SIGN. SIGN TO BE PROVIDED BY THE OWNER. SIGN ON BACK OF SIGN 108.
110	C-LINE	390+49	9.75' RT	ELST TRAIL RULES	CUSTOM	N/A	2" STEEL SQUARE*	NEW SIGN AND POST. SIGN TO BE PROVIDED BY THE OWNER.
111	C-LINE	407+13	9.75' LT	PET LAW	CUSTOM	N/A	2" STEEL SQUARE*	NEW SIGN AND POST. SIGN TO BE PROVIDED BY THE OWNER.
113	C-LINE	407+13	9.75' LT	PET LAW	CUSTOM	N/A	N/A	NEW SIGN AND POST. SIGN TO BE PROVIDED BY THE OWNER. SIGN ON BACK OF SIGN 111.
118	D-LINE	459+95	19.5' LT	STOP	R1-1	30"x30"	N/A	NEW SIGN ON CHAIN LINK FENCE
120	D-LINE	434+53	10.1' RT	BICYCLE MUST DISMOUNT	R5-6 (MOD)	18" X 18"	2" STEEL SQUARE*	NEW SIGN AND POST. SEE SIGN DETAIL W8-3 (MOD-2)
121	D-LINE	433+32	45.8' RT	LOOK BOTH WAYS BEFORE EXITING	W8-3 (MOD-3)	18" X 18"	2" STEEL SQUARE*	NEW SIGN AND POST MOUNTED ON FACE OF WALL. SEE SIGN WALL MOUNT DETAILS ON THIS SHEET. SEE SIGN DETAIL W8-3 (MOD-3)
122	D-LINE	433+43	49.6' RT	BICYCLE MUST DISMOUNT	R5-6 (MOD)	18" X 18"	2" STEEL SQUARE*	NEW SIGN AND POST MOUNTED ON FACE OF WALL. SEE SIGN WALL MOUNT DETAILS ON THIS SHEET. SEE SIGN DETAIL W8-3 (MOD-2)
123	D-LINE	434+40	50.3' RT	BICYCLE / PEDESTRIAN	W11-15	18"x18"	2" STEEL SQUARE*	NEW SIGN AND POST
124	D-LINE	434+40	50.3' RT	AHEAD (PLAQUE)	W16-9P	24"x12"	N/A	NEW SIGN ON SAME POST AS SIGN 122. BELOW SIGN 122
133	D-LINE	450+27	67.6' RT	DO NOT ENTER	R5-1	30"x30"	2" STEEL SQUARE*	NEW SIGN AND POST

* SEE DETAILS 3-7 ON SHEET MD8 FOR SIGN SUPPORT DETAILS.

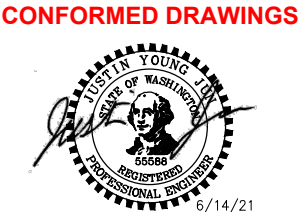


CITY OF SAMMAMISH PUBLIC WORKS DEVELOPMENT REVIEW
These drawings have been reviewed for compliance with City of Sammamish Clearing and Grading and Stormwater requirements and also in accordance with the requirements as established in the Settlement Agreement between King County vs. City of Sammamish No. C17-0921 JCC and King County vs. City of Sammamish No. 17-2-29922-7 SEA and have been deemed ACCEPTABLE. The reviewer accepts no responsibility for any errors and/or omissions made by the preparer of these drawings.
17 February 2022

CITY OF SAMMAMISH APPROVAL	
City Engineer	Date
Community Development	Date

REVISIONS	DATE	BY	DESIGNED
			J. JUN
			DRAWN B. PURGANAN
			CHECKED Y. HO
			APPROVED J. BAILEY

ONE INCH AT FULL SCALE. IF NOT, SCALE ACCORDINGLY
FILE NAME: BL1521075P19T03PS-02
JOB No.: 554-1521-075 P19 T03
DATE: JUNE 2021



Parametrix
ENGINEERING · PLANNING · ENVIRONMENTAL SCIENCES
719 2ND AVENUE, SUITE 200 | SEATTLE, WA 98104
P 206.394.3700
WWW.PARAMETRIX.COM

PROJECT NAME
EAST LAKE SAMMAMISH MASTER PLAN TRAIL SOUTH SAMMAMISH SEGMENT B - PHASE 2
SAMMAMISH, WA

SIGN SCHEDULE

SHEET NO.
131 OF 213
PS11