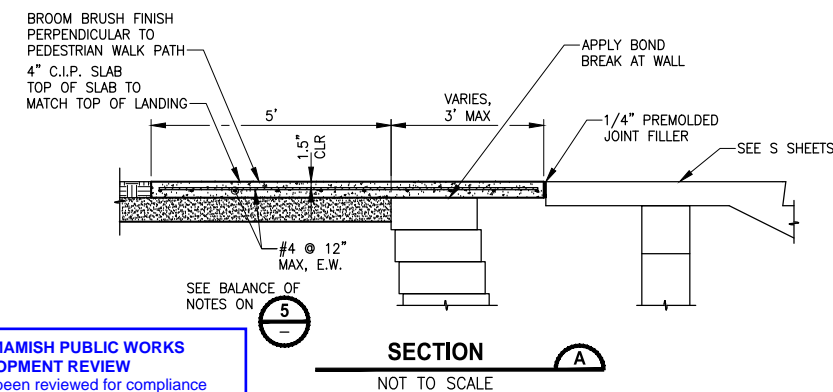
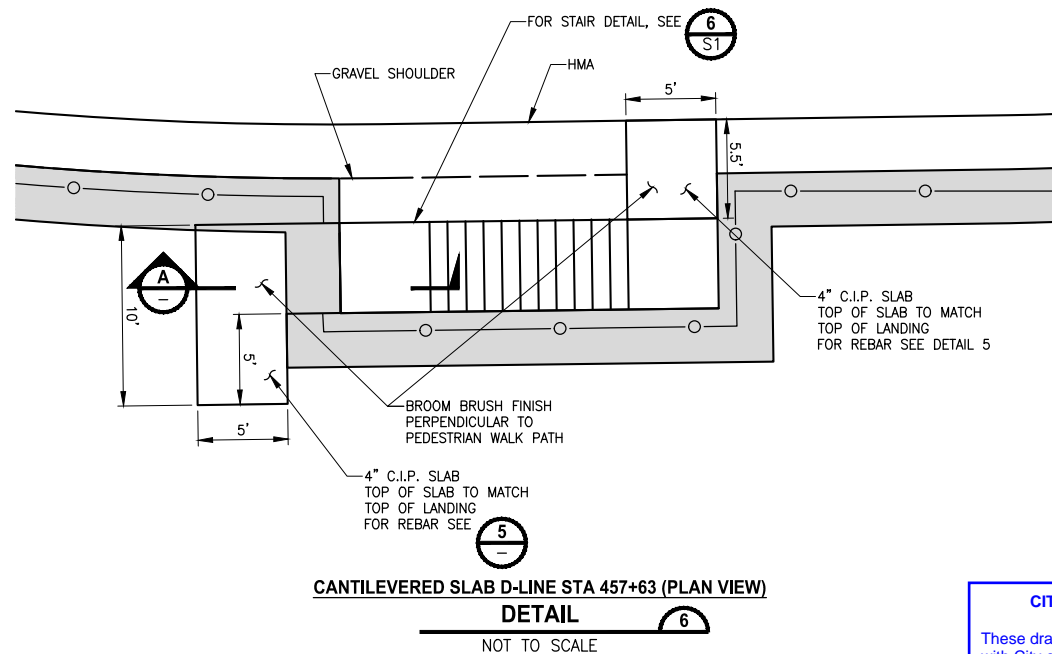
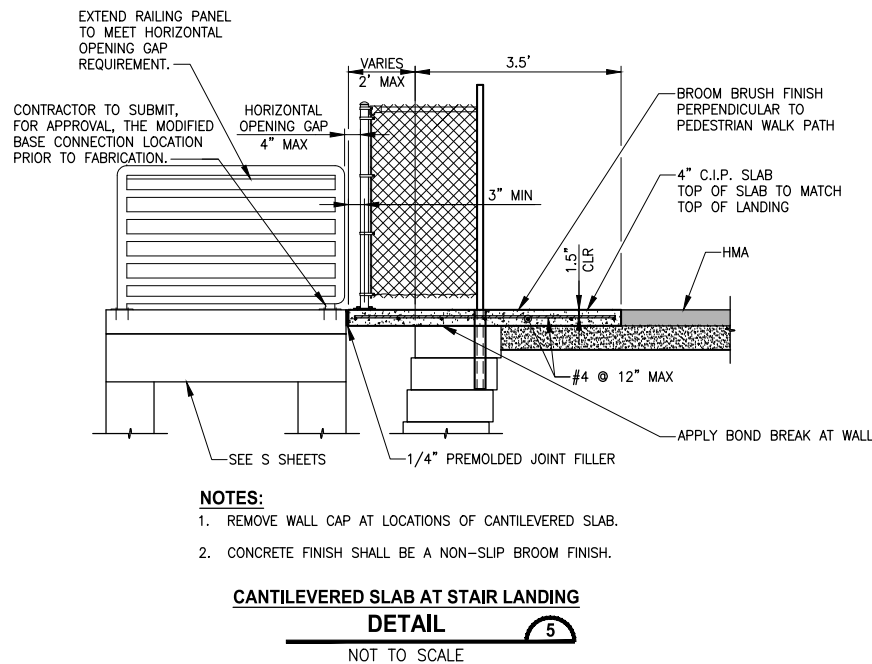
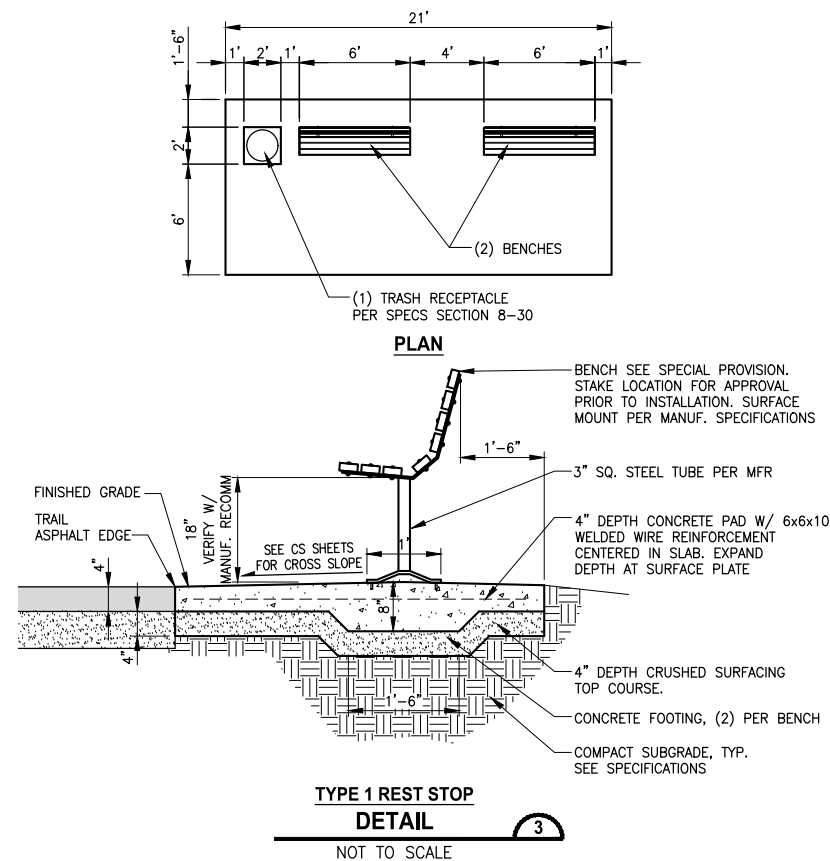


- NOTES:**
1. ROCKERIES HIGHER THAN 5' SHALL BE CONSTRUCTED OF ROCKS OF GRADUATED SIZES FROM 5-MAN TO 2-MAN FROM BOTTOM TO TOP. ROCKERIES OF 5' OR LOWER SHALL BE CONSTRUCTED OF 3-MAN TO 2-MAN FROM BOTTOM TO TOP. ROCK SIZE CATEGORIES SHALL INCLUDE:
TWO-MAN ROCKS (300 TO 600 POUNDS), 13 INCHES IN LEAST DIMENSION;
THREE-MAN ROCKS (800 TO 1200 POUNDS), 16 INCHES IN LEAST DIMENSION;
FOUR-MAN ROCKS (1500 TO 2200 POUNDS), 18 INCHES IN LEAST DIMENSION;
FIVE-MAN ROCKS (2400 TO 3400 POUNDS), 24 INCHES IN LEAST DIMENSION;
 2. THE ROCKERY SHALL BE INSTALLED WITH A SMOOTH FACE.
 3. THE LONG DIMENSION OF THE ROCKS SHALL EXTEND INTO THE EARTH TO PROVIDE MAXIMUM STABILITY.
 4. THE ROCK SHALL BE PLACED SO AS TO LOCK INTO TWO ROCKS IN THE LOWER TIER.
 5. CALL FOR INSPECTION PRIOR TO BASE COURSE BEING PLACED (FOR VERIFICATION OF ROCKERY HEIGHT, FOUNDATION MATERIAL AND ROCK SIZE).



**CITY OF SAMMAMISH PUBLIC WORKS
DEVELOPMENT REVIEW**

These drawings have been reviewed for compliance with City of Sammamish Clearing and Grading and Stormwater requirements and also in accordance with the requirements as established in the Settlement Agreement between King County vs. City of Sammamish No. C17-0921 JCC and King County vs. City of Sammamish No. 17-2-29922-7 SEA and have been deemed ACCEPTABLE. The reviewer accepts no responsibility for any errors and/or omissions made by the preparer of these drawings.

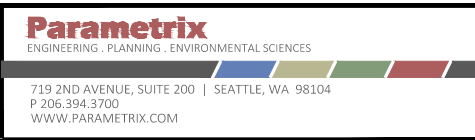
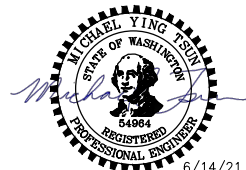
17 February 2022

CITY OF SAMMAMISH APPROVAL	
City Engineer _____	Date _____
Community Development _____	Date _____

▷	REVISIONS	DATE	BY	DESIGNED M. TSUN
				DRAWN B. PURGANAN
				CHECKED Y. HO
				APPROVED J. BAILEY

ONE INCH AT FULL SCALE.
IF NOT, SCALE ACCORDINGLY

FILE NAME
BL1521075P19T03MD-01
JOB No.
554-1521-075 P19 T03
DATE
JUNE 2021



PROJECT NAME

**EAST LAKE SAMMAMISH
MASTER PLAN TRAIL
SOUTH SAMMAMISH SEGMENT B - PHASE 2**

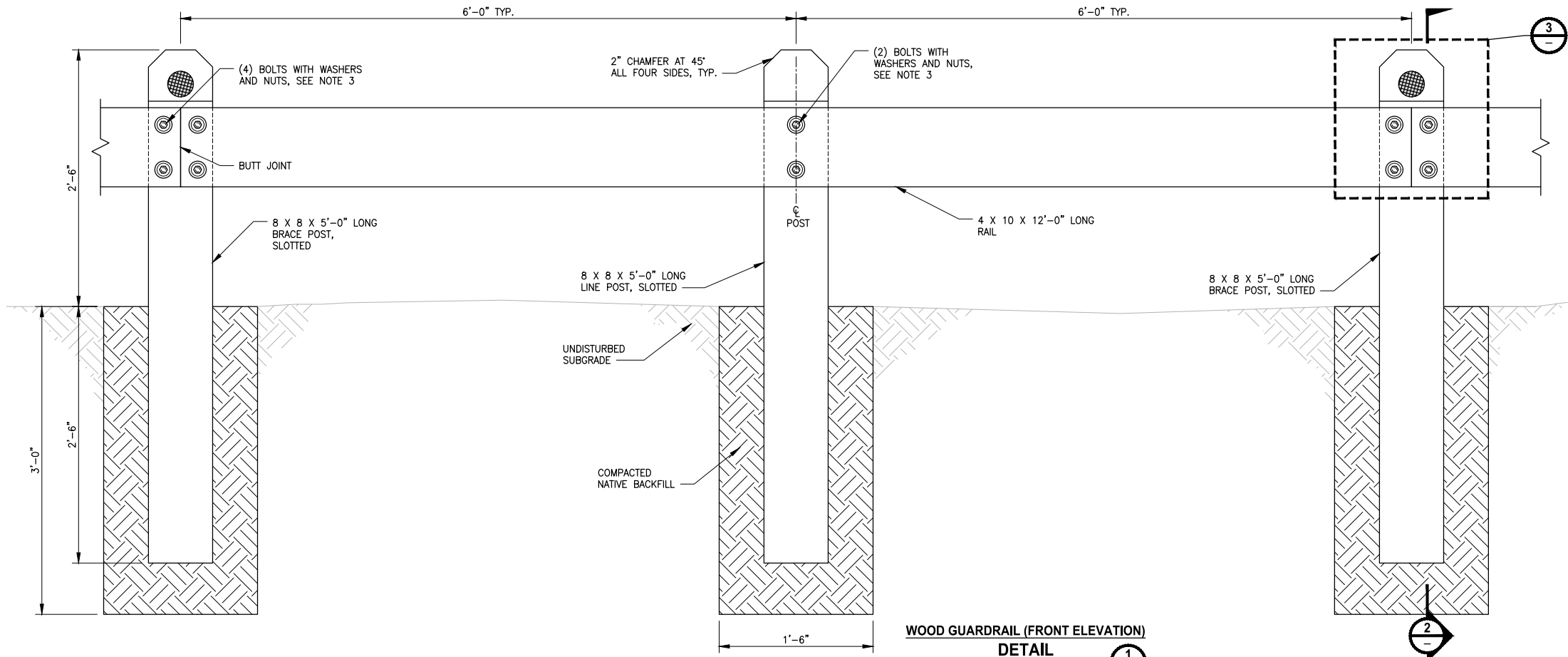
SAMMAMISH, WA

MISCELLANEOUS DETAILS

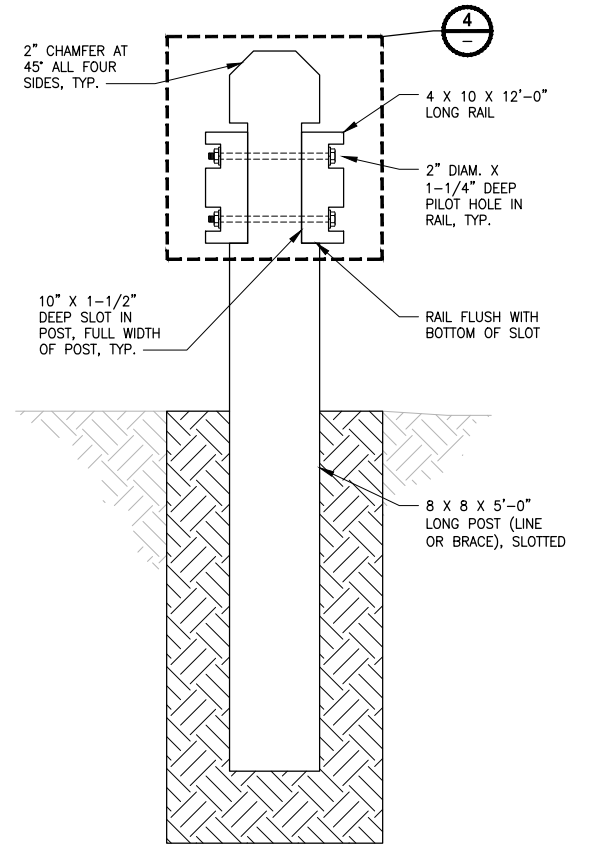
SHEET NO.
132 OF 213

MD1

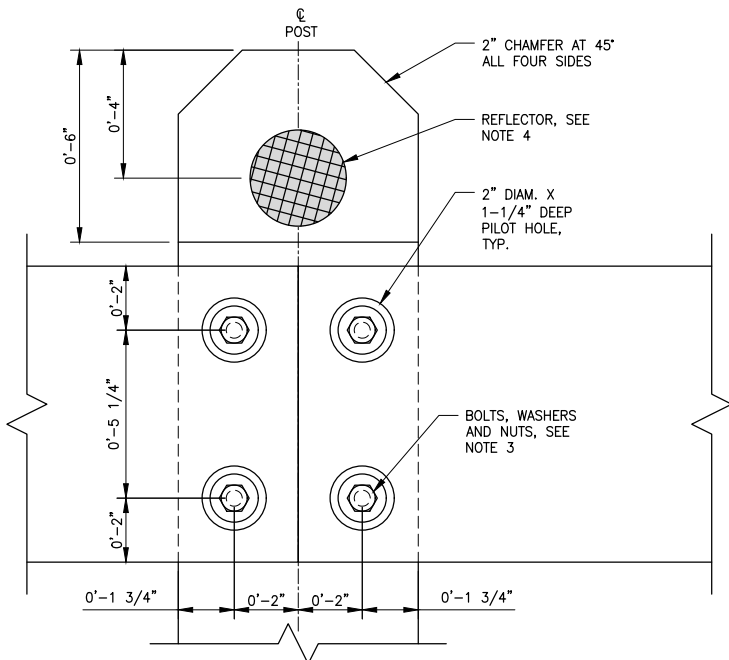
PATH: U:\PSO\Projects\Clients\1521-KingCo\554-1521-075-ELST\99Sect\CADD\Phase 19\T03 Civil\DWG-Phase2\ PLOTTED BY: purgaban DATE: Monday, June 14, 2021 9:27:54 PM LAYOUT: MD2



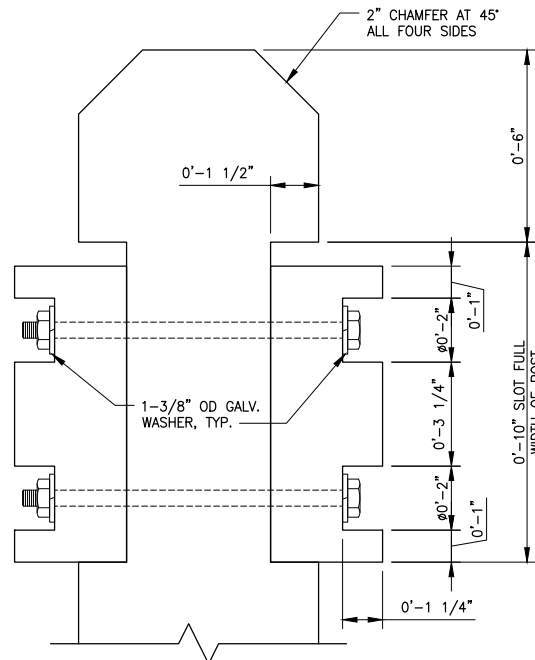
WOOD GUARDRAIL (FRONT ELEVATION)
DETAIL 1
NOT TO SCALE



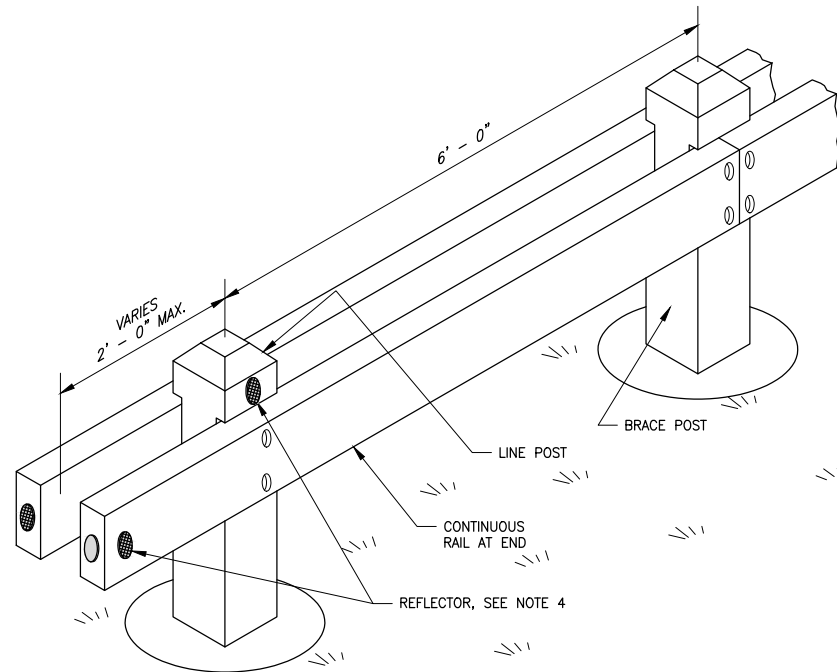
WOOD GUARDRAIL (SIDE ELEVATION)
DETAIL 2
NOT TO SCALE



ASSEMBLY (DETAIL)
DETAIL 3
NOT TO SCALE



ASSEMBLY (ELEVATION)
DETAIL 4
NOT TO SCALE



END RAIL (ISOMETRIC)
DETAIL 5
NOT TO SCALE

NOTES:

- ALL BOARDS AND POSTS SHALL BE PRESSURE TREATED HEMLOCK, PRESSURE TREATED DOUGLAS FIR, OR UNTREATED CEDAR LUMBER. TREATMENT SHALL CONFORM TO WSDOT STANDARD SPECIFICATION 9-09.3.
- SET POSTS PLUMB.
- BOLTS SHALL BE 5/8" X 10" LONG GALV. HEX BOLT AND NUT WITH (2) 1-3/8" OUTSIDE DIAMETER GALV. WASHERS, EACH SIDE.
- INSTALL 3" DIAMETER RED REFLECTIVE BUTTONS USING SCREWS AND BOLTS ON FRONT AND BACK OF EVERY OTHER POST AND ON END RAIL AS SHOWN IN PLANS.
- ADJUST POST SPACING AS NEEDED TO AVOID EXISTING UTILITIES. THE SPACING SHALL NOT BE LESS THAN 4'-0" OR MORE THAN 8'-0", UNLESS OTHERWISE APPROVED.

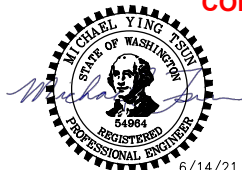
CITY OF SAMMAMISH PUBLIC WORKS DEVELOPMENT REVIEW

These drawings have been reviewed for compliance with City of Sammamish Clearing and Grading and Stormwater requirements and also in accordance with the requirements as established in the Settlement Agreement between King County vs. City of Sammamish No. C17-0921 JCC and King County vs. City of Sammamish No. 17-2-29922-7 SEA and have been deemed ACCEPTABLE. The reviewer accepts no responsibility for any errors and/or omissions made by the preparer of these drawings.

17 February 2022

CITY OF SAMMAMISH APPROVAL	
City Engineer	Date
Community Development	Date

CONFORMED DRAWINGS



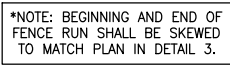
ONE INCH AT FULL SCALE.
IF NOT, SCALE ACCORDINGLY
FILE NAME
BL1521075P19T03MD-01
JOB No.
554-1521-075 P19 T03
DATE
JUNE 2021

Parametrix
ENGINEERING · PLANNING · ENVIRONMENTAL SCIENCES
719 2ND AVENUE, SUITE 200 | SEATTLE, WA 98104
P 206.394.3700
WWW.PARAMETRIX.COM


PROJECT NAME
**EAST LAKE SAMMAMISH
MASTER PLAN TRAIL
SOUTH SAMMAMISH SEGMENT B - PHASE 2**
SAMMAMISH, WA

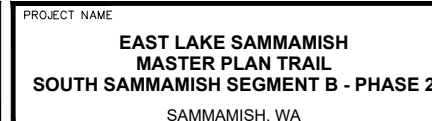
MISCELLANEOUS DETAILS

SHEET NO.
133 OF 213
MD2



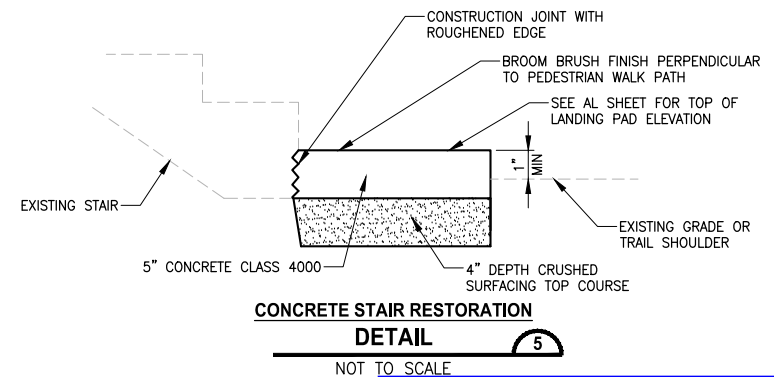
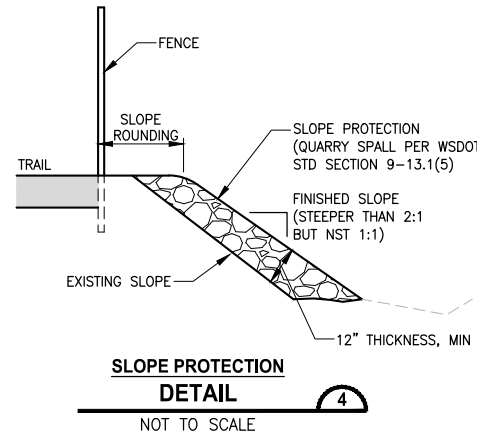
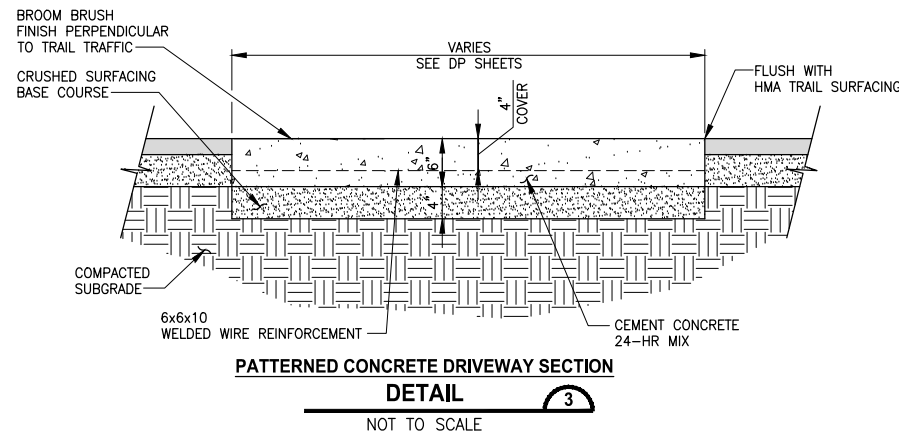
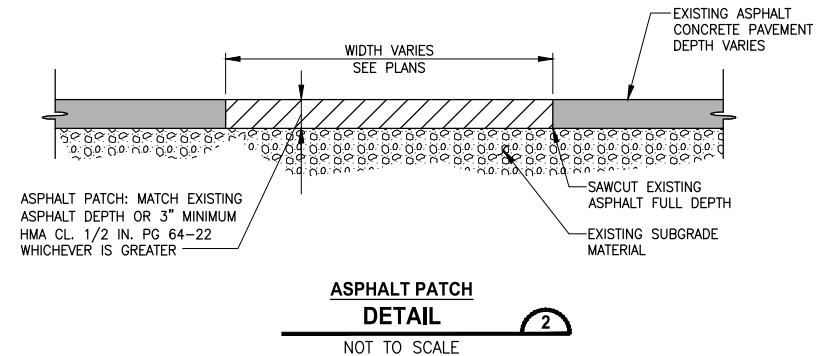
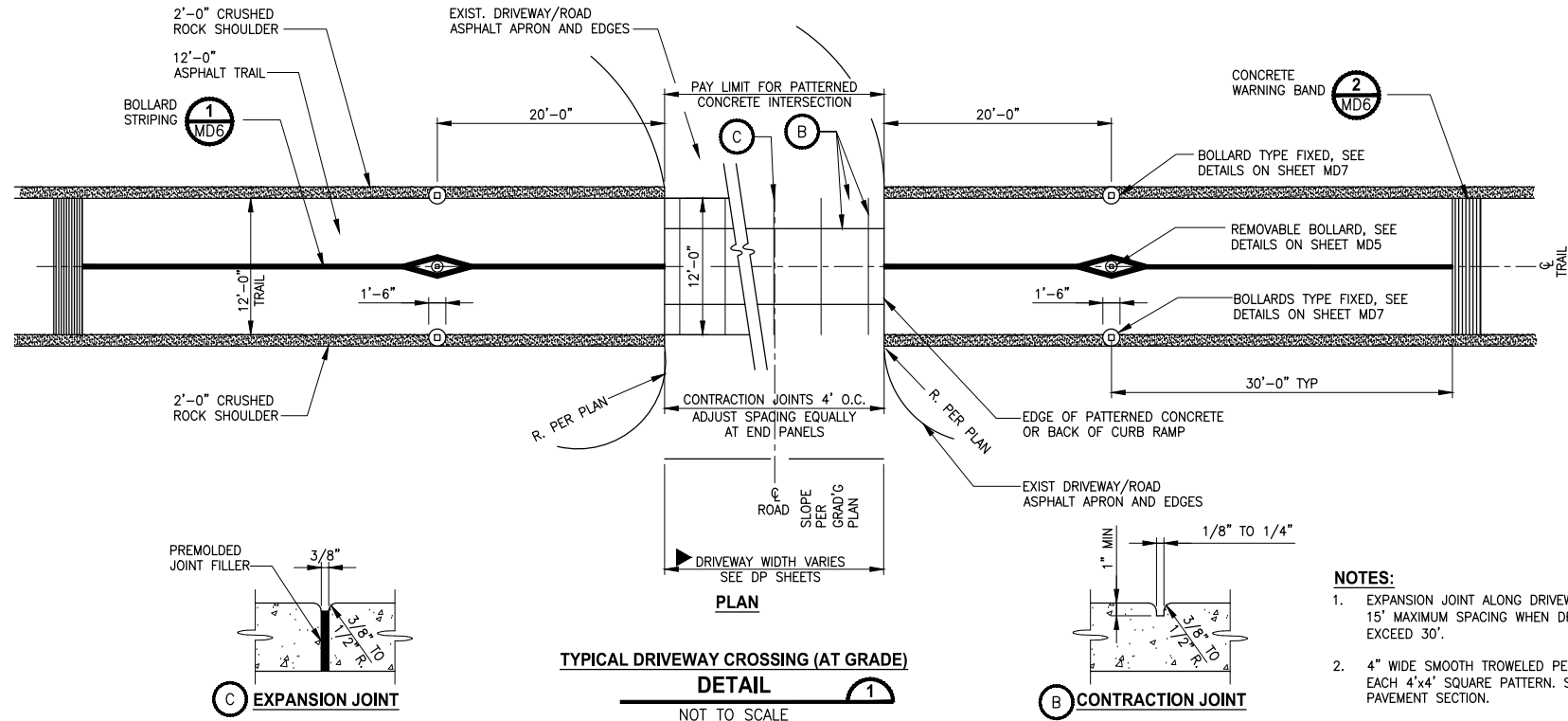
CITY OF SAMMAMISH APPROVAL	
City Engineer _____	Date _____
Community Development _____	Date _____

<div style="text-align: center;">  </div> <p>ONE INCH AT FULL SCALE. IF NOT, SCALE ACCORDINGLY</p>	
FILE NAME	BL1521075P19T03MD-01
JOB No.	554-1521-075 P19 T03
DATE	JUNE 2021



1D3

U:\PSO\Projects\Clients\KingCo\554-1521-075-ELST\99Secs\CADD\Phase 19\T03 Civil\Wg-Phase2\ PLOTTED BY: purgaban DATE: Monday, June 14, 2021 9:28:04 PM LAYOUT: MD4



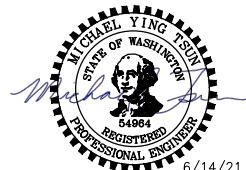
CITY OF SAMMAMISH PUBLIC WORKS DEVELOPMENT REVIEW

These drawings have been reviewed for compliance with City of Sammamish Clearing and Grading and Stormwater requirements and also in accordance with the requirements as established in the Settlement Agreement between King County vs. City of Sammamish No. C17-0921 JCC and King County vs. City of Sammamish No. 17-2-29922-7 SEA and have been deemed ACCEPTABLE. The reviewer accepts no responsibility for any errors and/or omissions made by the preparer of these drawings.

17 February 2022

CITY OF SAMMAMISH APPROVAL	
City Engineer	Date
Community Development	Date

CONFORMED DRAWINGS



6/14/21

ONE INCH AT FULL SCALE. IF NOT, SCALE ACCORDINGLY

FILE NAME: BL1521075P19T03MD-01

JOB No. 554-1521-075 P19 T03

DATE: JUNE 2021

REVISIONS	DATE	BY	DESIGNED
			M. TSUN
			DRAWN B. PURGANAN
			CHECKED Y. HO
			APPROVED J. BAILEY

Parametrix

ENGINEERING · PLANNING · ENVIRONMENTAL SCIENCES

719 2ND AVENUE, SUITE 200 | SEATTLE, WA 98104

P 206.394.3700

WWW.PARAMETRIX.COM

PROJECT NAME

EAST LAKE SAMMAMISH MASTER PLAN TRAIL SOUTH SAMMAMISH SEGMENT B - PHASE 2

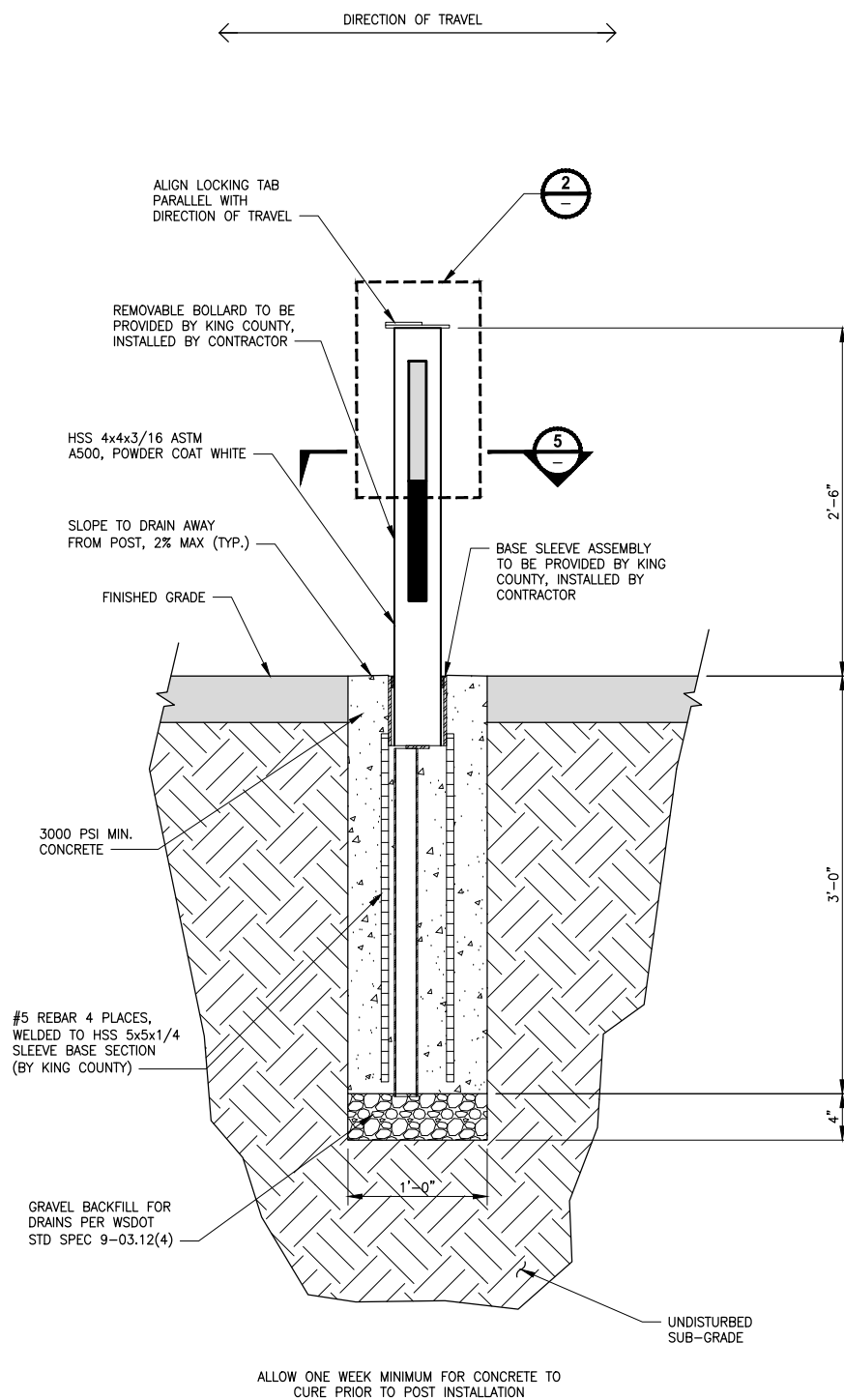
SAMMAMISH, WA

MISCELLANEOUS DETAILS

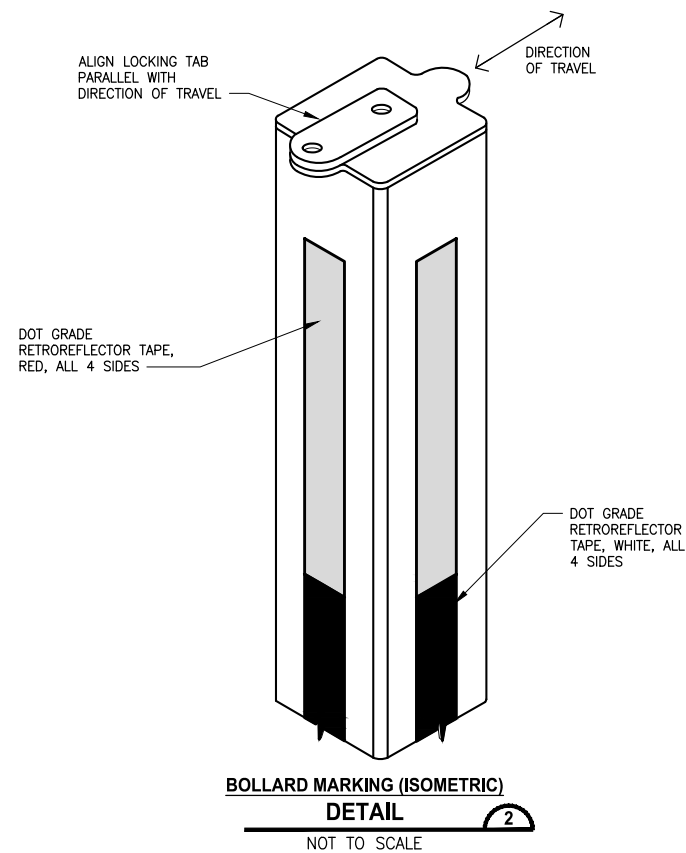
SHEET NO.
135 OF 213

MD4

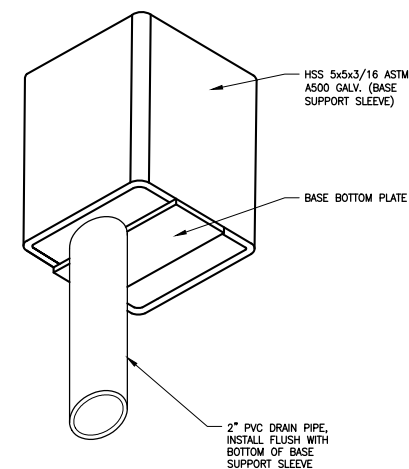
LAYOUT: MD5 PATH: U:\PSO\Projects\Clients\1521-KingCo\554-1521-075-ELST\99Svcs\CADD\Phase 19\T03 Civil\Dwg-Phase2\
PLOTTED BY: purgubut DATE: Monday, June 14, 2021 9:28:09 PM



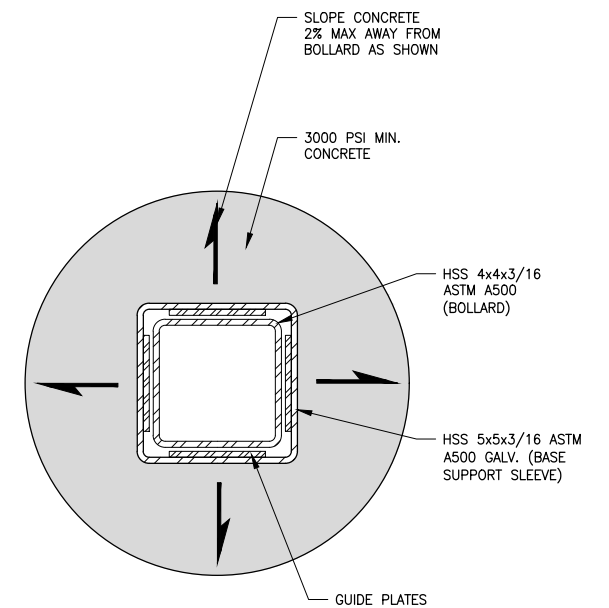
REMOVABLE BOLLARD (ELEVATION)
DETAIL 
NOT TO SCALE



REMOVABLE BOLLARD EMBEDMENT
DETAIL 
NOT TO SCALE



BOLLARD BASE DRAINS (ISOMETRIC)
DETAIL 4
NOT TO SCALE



REMOVABLE BOLLARD (PLAN)
DETAIL 
NOT TO SCALE

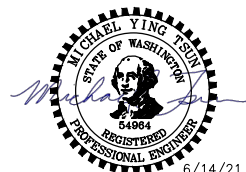
- ## **NOTES:**
1. REMOVABLE BOLLARD ASSEMBLY AND BASE SLEEVE ASSEMBLY PARTS ARE DESIGNED, MANUFACTURED AND PROVIDED BY KING COUNTY PARKS OPERATIONS.
 2. PVC DRAIN PIPES ARE TO BE PROVIDED BY THE CONTRACTOR. INSTALLATION OF ALL PARTS SHALL BE PERFORMED BY THE CONTRACTOR.
 3. GRAVEL BACKFILL FOR DRAINS SHALL CONFORM TO WSDOT STD. SPEC. 9-03.12(4).
 4. CONCRETE SHALL ACHIEVE A 28-DAY STRENGTH OF 3000 PSI MINIMUM.
 5. ALL WELDS SHALL CONFORM TO THE REQUIREMENTS OF AWS D1.4. WELDING SHALL BE PERFORMED BY AWS/WABO CERTIFIED WELDERS QUALIFIED FOR WELDS USING THE APPROVED ELECTRODES.

**CITY OF SAMMAMISH PUBLIC WORKS
DEVELOPMENT REVIEW**

These drawings have been reviewed for compliance with City of Sammamish Clearing and Grading and Stormwater requirements and also in accordance with the requirements as established in the Settlement Agreement between King County vs. City of Sammamish No. C17-0921 JCC and King County vs. City of Sammamish No. 17-2-29922-7 SEA and have been deemed ACCEPTABLE. The reviewer accepts no responsibility for any errors and/or omissions made by the preparer of these drawings.

17 February 2022

CONFORMED DRAWINGS



PROJECT NAME

**EAST LAKE SAMMAMISH
MASTER PLAN TRAIL
SOUTH SAMMAMISH SEGMENT B - PHASE 2**

SAMMAMISH, WA

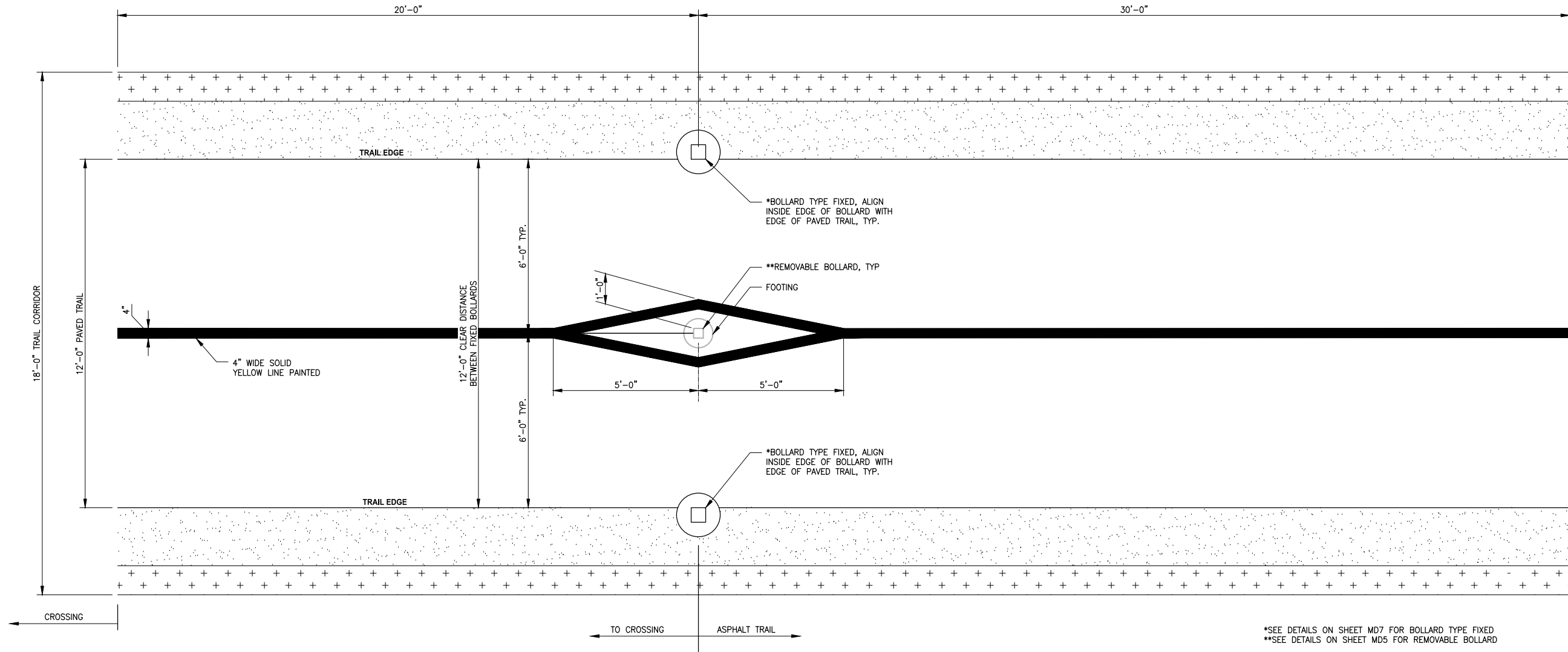
MISCELLANEOUS DETAILS

SHEET NO.
36 OF 213

MD5

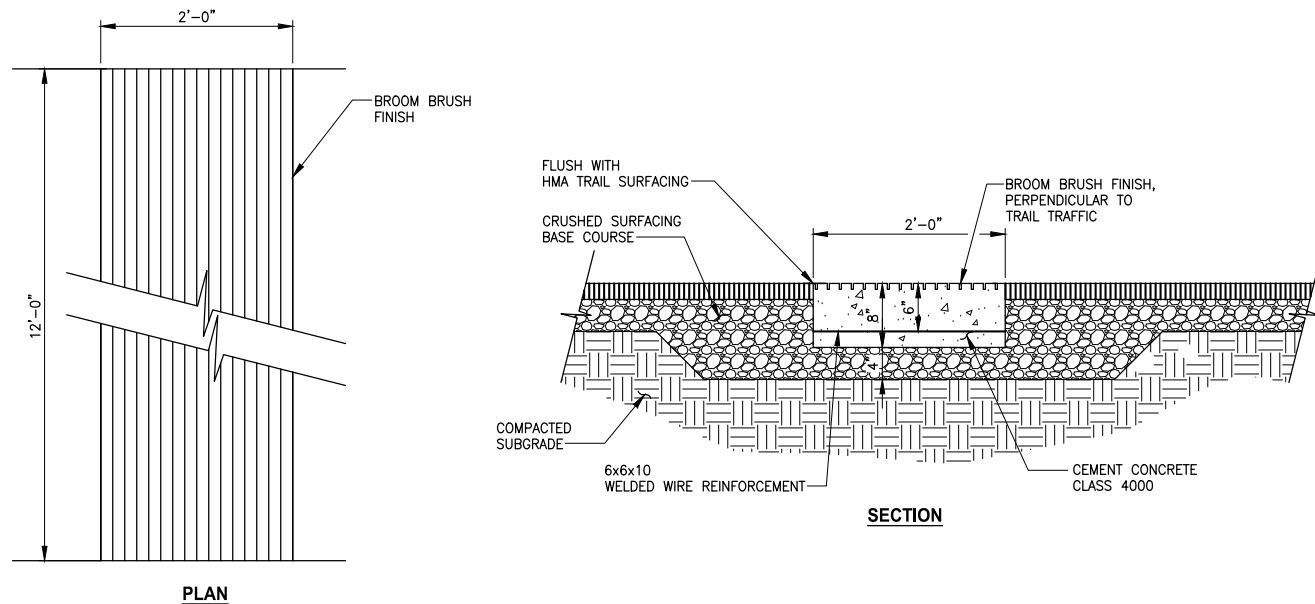
CITY OF SAMMAMISH APPROVAL	
City Engineer _____	Date _____
Community Development _____	Date _____

PATH: U:\PSO\Projects\Clients\1521-KingCo\554-1521-075-ELST\99Secs\CADD\Phase 19\T03 Civil\Wdg-Phase2\ LAYOUT: MD6 PLOTTED BY: purgaban DATE: Monday, June 14, 2021 9:28:14 PM



*SEE DETAILS ON SHEET MD7 FOR BOLLARD TYPE FIXED
**SEE DETAILS ON SHEET MD5 FOR REMOVABLE BOLLARD

BOLLARD LAYOUT AND STRIPING (PLAN)
DETAIL 1
NOT TO SCALE



CONCRETE WARNING BAND
DETAIL 2
NOT TO SCALE

CONFORMED DRAWINGS



REVISIONS	DATE	BY	DESIGNED
			M. TSUN
			DRAWN B. PURGANAN
			CHECKED Y. HO
			APPROVED J. BAILEY

ONE INCH AT FULL SCALE. IF NOT, SCALE ACCORDINGLY
FILE NAME BL1521075P19T03MD-01
JOB No. 554-1521-075 P19 T03
DATE JUNE 2021

Parametrix
ENGINEERING · PLANNING · ENVIRONMENTAL SCIENCES

719 2ND AVENUE, SUITE 200 | SEATTLE, WA 98104
P 206.394.3700
WWW.PARAMETRIX.COM

PROJECT NAME

**EAST LAKE SAMMAMISH
MASTER PLAN TRAIL
SOUTH SAMMAMISH SEGMENT B - PHASE 2**

SAMMAMISH, WA

MISCELLANEOUS DETAILS

**CITY OF SAMMAMISH PUBLIC WORKS
DEVELOPMENT REVIEW**

These drawings have been reviewed for compliance with City of Sammamish Clearing and Grading and Stormwater requirements and also in accordance with the requirements as established in the Settlement Agreement between King County vs. City of Sammamish No. C17-0921 JCC and King County vs. City of Sammamish No. 17-2-29922-7 SEA and have been deemed ACCEPTABLE. The reviewer accepts no responsibility for any errors and/or omissions made by the preparer of these drawings.

17 February 2022

CITY OF SAMMAMISH APPROVAL	
City Engineer	Date
Community Development	Date

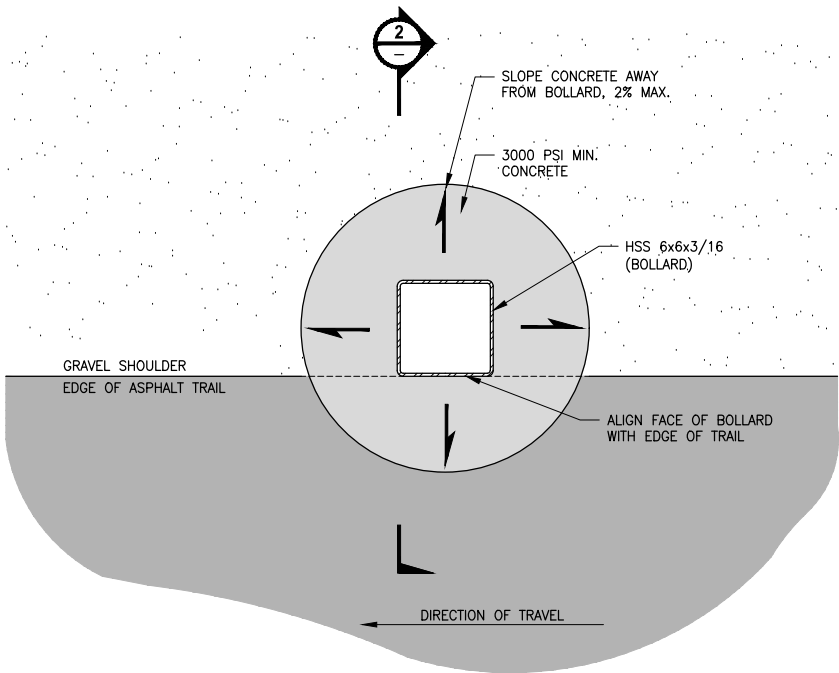
SHEET NO.
137 OF 213

MD6

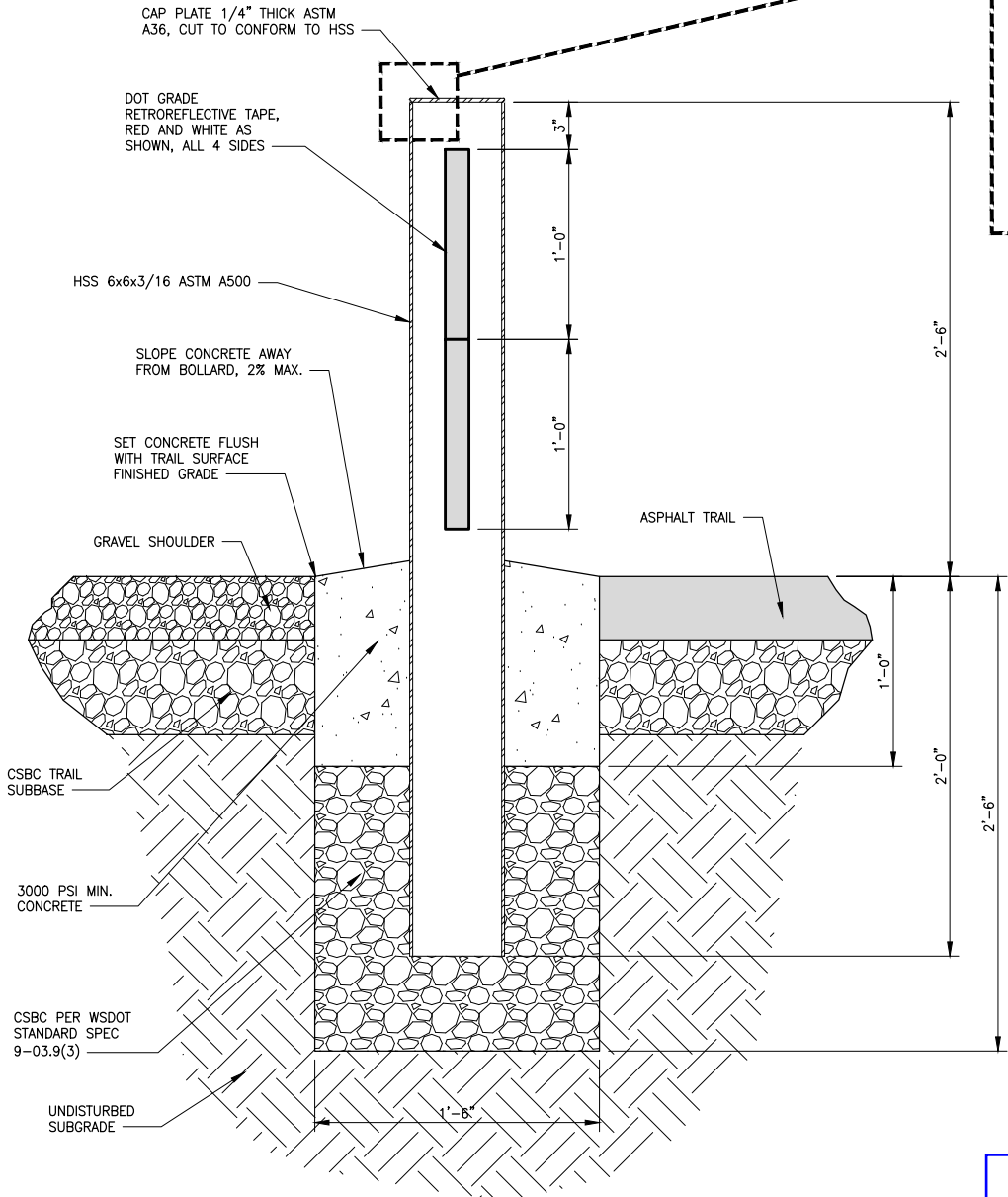
PATH: U:\PSO\Projects\Clients\1521-KingCo\554-1521-075-ELST\99Secs\CADD\Phase 19\T03 Civil\Wg-Phase2 PLOTTED BY: purgebut DATE: Monday, June 14, 2021 9:28:19 PM LAYOUT: MD7

NOTES:

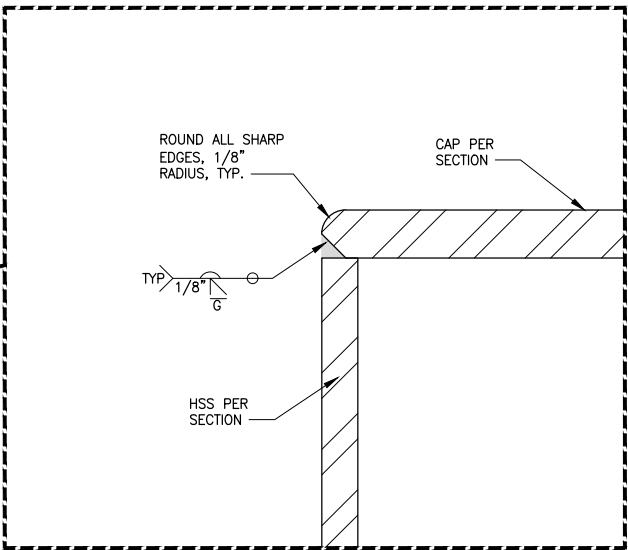
- BOLLARD ASSEMBLY SHALL BE POWDER COATED WHITE AFTER WELDING.
- APPLY RETROREFLECTIVE TAPE PER PLAN AFTER POWDER COATING.
- CONCRETE SHALL ACHIEVE A 28-DAY STRENGTH OF 3,000 PSI MINIMUM.
- ALL WELDS SHALL CONFORM TO THE REQUIREMENTS OF AWS DL4. WLDING SHALL BE PERFORMED BY AWS/WABO CERTIFIED WELDERS QUALIFIED FOR WELDS USING THE APPROVED ELECTRODES.



FIXED STEEL BOLLARD (PLAN VIEW)
DETAIL
NOT TO SCALE



FIXED STEEL BOLLARD (ELEVATION)
DETAIL
NOT TO SCALE



CONFORMED DRAWINGS



Parametrix
ENGINEERING · PLANNING · ENVIRONMENTAL SCIENCES
719 2ND AVENUE, SUITE 200 | SEATTLE, WA 98104
P 206.394.3700
WWW.PARAMETRIX.COM

PROJECT NAME
**EAST LAKE SAMMAMISH
MASTER PLAN TRAIL
SOUTH SAMMAMISH SEGMENT B - PHASE 2**
SAMMAMISH, WA

**CITY OF SAMMAMISH PUBLIC WORKS
DEVELOPMENT REVIEW**
These drawings have been reviewed for compliance with City of Sammamish Clearing and Grading and Stormwater requirements and also in accordance with the requirements as established in the Settlement Agreement between King County vs. City of Sammamish No. C17-0921 JCC and King County vs. City of Sammamish No. 17-2-29922-7 SEA and have been deemed **ACCEPTABLE**. The reviewer accepts no responsibility for any errors and/or omissions made by the preparer of these drawings.
17 February 2022

CITY OF SAMMAMISH APPROVAL	
City Engineer	Date
Community Development	Date

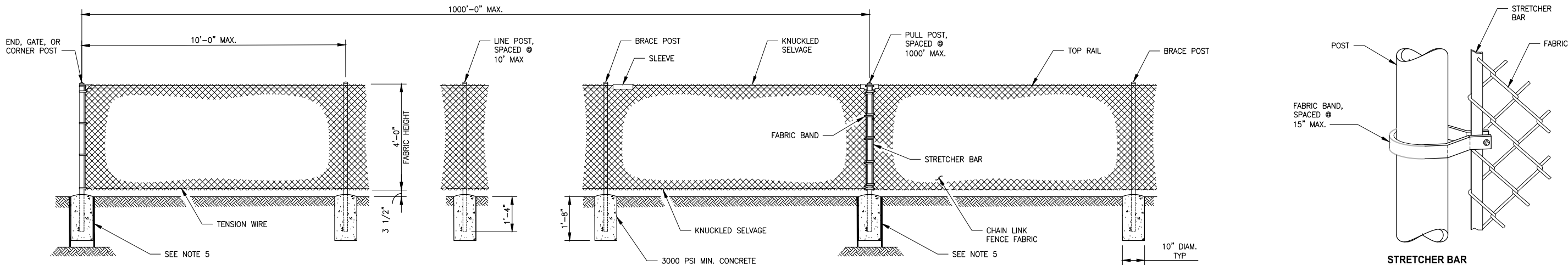
REVISIONS	DATE	BY	DESIGNED
			M. TSUN
			B. PURGANAN
			Y. HO
			J. BAILEY

ONE INCH AT FULL SCALE. IF NOT, SCALE ACCORDINGLY
FILE NAME BL1521075P19T03MD-01
JOB No. 554-1521-075 P19 T03
DATE JUNE 2021

MISCELLANEOUS DETAILS

SHEET NO.
138 OF 213
MD7

PATH: U:\PSO\Projects\Clients\1521-KingCo\554-1521-075-ELST\995\cadd\Phase 19\T03 Civil\Wg-Phase2\ PLOTTED BY: purgaban DATE: Monday, June 14, 2021 9:28:24 PM LAYOUT: MD8



POST AND RAIL SPECIFICATIONS

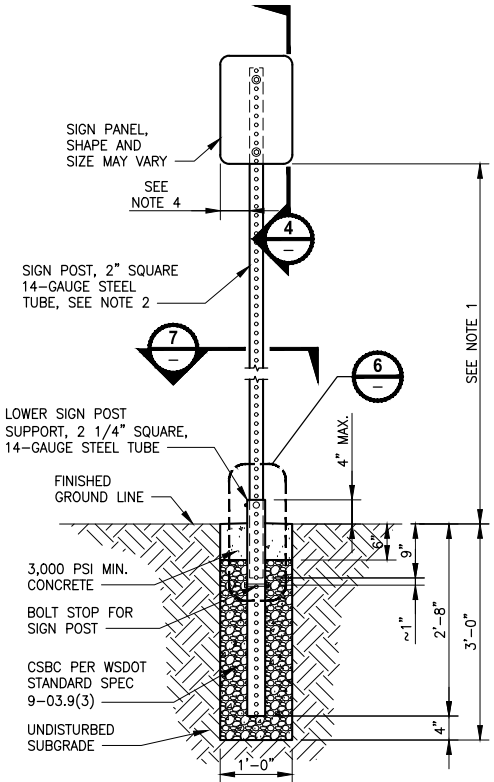
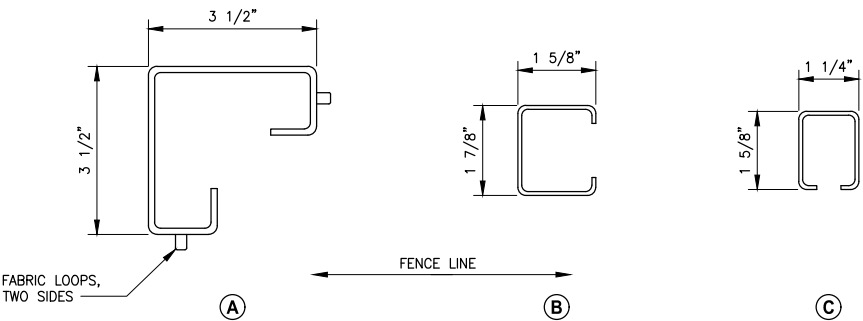
MEMBER	PIPE	CONC.	
	NOM. SIZE (SCH 40)	SECTION	WEIGHT (LB/FT)
END, CORNER, OR PULL POST	2 1/2" DIAM.	(A)	5.10
LINE OR BRACE POST	2" DIAM.	(B)	2.40
BRACE OR TOP RAIL	1 1/4" DIAM.	(C)	1.35
GATE POST	3 1/2" DIAM.		

4 FOOT COATED CHAIN LINK FENCE (ELEVATION) DETAIL 1 NOT TO SCALE

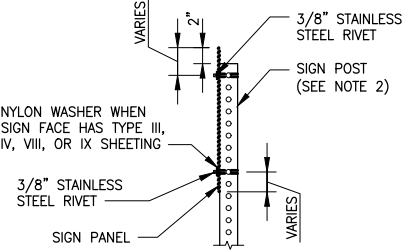
STRETCHER BAR DETAIL 2 NOT TO SCALE

NOTES:

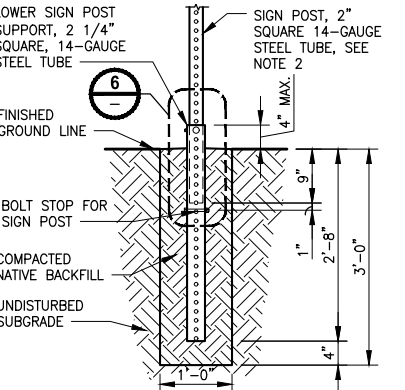
- CHAIN LINK FENCE FABRIC SHALL BE HOT-DIP GALVANIZED WITH A MINIMUM OF 0.8 OUNCE PER SQUARE FOOT OF SURFACE AREA.
- FENCING MATERIAL SHALL BE COATED WITH AN ULTRAVIOLET-SENSITIVE PLASTIC OR OTHER INERT MATERIAL AT LEAST 2 MILS IN THICKNESS. ANY PRETREATMENT OR COATING SHALL BE APPLIED IN ACCORDANCE WITH THE MANUFACTURER'S WRITTEN INSTRUCTIONS. THE COLOR SHALL MATCH FEDERAL STANDARD NUMBER *** 595 B 27038 BLACK ***, OR BE AS APPROVED BY THE ENGINEER.
- TENSION WIRE SHALL BE PLACED WITHIN THE LIMITS OF THE FIRST FULL FABRIC WEAVE.
- DETAILS ARE ILLUSTRATIVE AND SHALL NOT LIMIT HARDWARE DESIGN OR POST SELECTION OF ANY PARTICULAR FENCE TYPE, PER MANUFACTURER'S RECOMMENDATIONS.
- SONOTUBE OR EQUIVALENT SHALL ONLY BE USED IN SLOPE PROTECTION OR STEEPER SLOPED AREAS AS NOTED ON THE CS SHEETS. SONOTUBES SHALL BE INSTALLED AT EVERY OTHER POST LOCATION PER PLAN LENGTH SHOWN ON THE AL SHEETS.



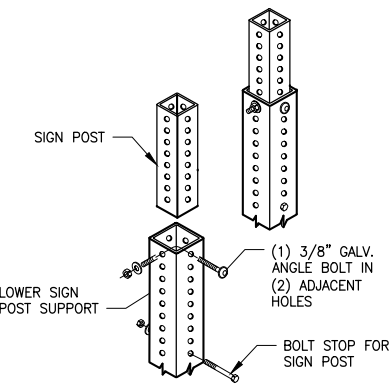
ELEVATION CONCRETE SIGN SUPPORT DETAIL 3 NOT TO SCALE



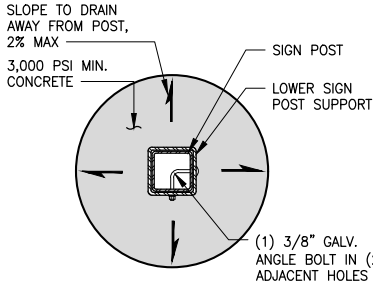
ELEVATION SIGN PANEL ATTACHMENT DETAIL 4 NOT TO SCALE



ELEVATION NATIVE BACKFILL SUPPORT DETAIL 5 NOT TO SCALE



ISOMETRIC LOWER POST SUPPORT ASSEMBLY DETAIL 6 NOT TO SCALE



PLAN VIEW SIGN SUPPORT BASE DETAIL 7 NOT TO SCALE

NOTES:

- USE 7 FOOT MIN. MOUNTING HEIGHT FOR TRAFFIC SIGNS. USE 5 FOOT MIN. MOUNTING HEIGHT FOR TRAIL SIGNS.
- PERFORATED SQUARE STEEL POST SHALL MEET REQUIREMENTS OF STANDARD SPECIFICATION 9-06.
- USE ONLY BASE CONNECTION HARDWARE THAT MEET THE REQUIREMENTS OF STANDARD SPECIFICATIONS 9-06 AND 9-28.
- USE OF CONCRETE FOOTING SIGN SUPPORT (DETAIL 1) OR NATIVE BACKFILL SIGN SUPPORT (DETAIL 4) PER KC PARKS ENGINEER'S DECISION.
- LATERAL CLEARANCE DISTANCES FOR TRAIL AND TRAFFIC SIGNS SHALL BE PER KC PARKS STANDARDS, MUTCD OR WSDOT REQUIREMENTS, LOCAL JURISDICTION, OR AS APPROVED BY THE ENGINEER.
- REFLECTOR ADDED TO SIGN POST PER KC PARKS ENGINEER'S DETERMINATION.
- DIMENSIONS FOR THE PARTS USED TO ASSEMBLE THE BASE CONNECTIONS ARE INTENTIONALLY NOT SHOWN. BASE CONNECTIONS ARE PATENTED, MANUFACTURED PRODUCTS THAT ARE IN COMPLIANCE WITH NCHRP 350 CRASH TEST CRITERIA. BASE CONNECTION DETAILS ARE SHOWN ONLY TO ILLUSTRATE ASSEMBLY OF PARTS.

CITY OF SAMMAMISH PUBLIC WORKS DEVELOPMENT REVIEW

These drawings have been reviewed for compliance with City of Sammamish Clearing and Grading and Stormwater requirements and also in accordance with the requirements as established in the Settlement Agreement between King County vs. City of Sammamish No. C17-0921 JCC and King County vs. City of Sammamish No. 17-2-29922-7 SEA and have been deemed ACCEPTABLE. The reviewer accepts no responsibility for any errors and/or omissions made by the preparer of these drawings.

17 February 2022

APPROVAL

REVISIONS	DATE	BY	DESIGNED
			M. TSUN
			B. PURGANAN
			CHECKED Y. HO
			APPROVED J. BAILEY

ONE INCH AT FULL SCALE. IF NOT, SCALE ACCORDINGLY

FILE NAME: BL1521075P19T03MD-01

JOB No.: 554-1521-075 P19 T03

DATE: JUNE 2021



Parametrix

ENGINEERING · PLANNING · ENVIRONMENTAL SCIENCES

719 2ND AVENUE, SUITE 200 | SEATTLE, WA 98104

P 206.394.3700

WWW.PARAMETRIX.COM

PROJECT NAME

EAST LAKE SAMMAMISH MASTER PLAN TRAIL SOUTH SAMMAMISH SEGMENT B - PHASE 2

SAMMAMISH, WA

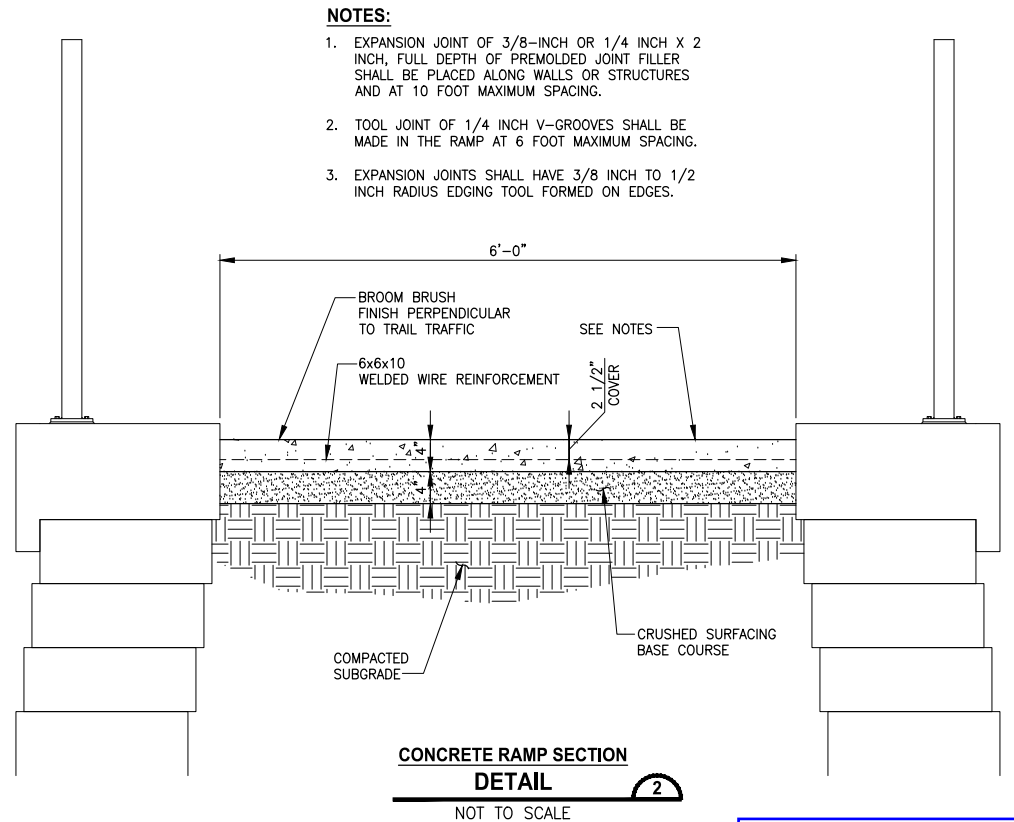
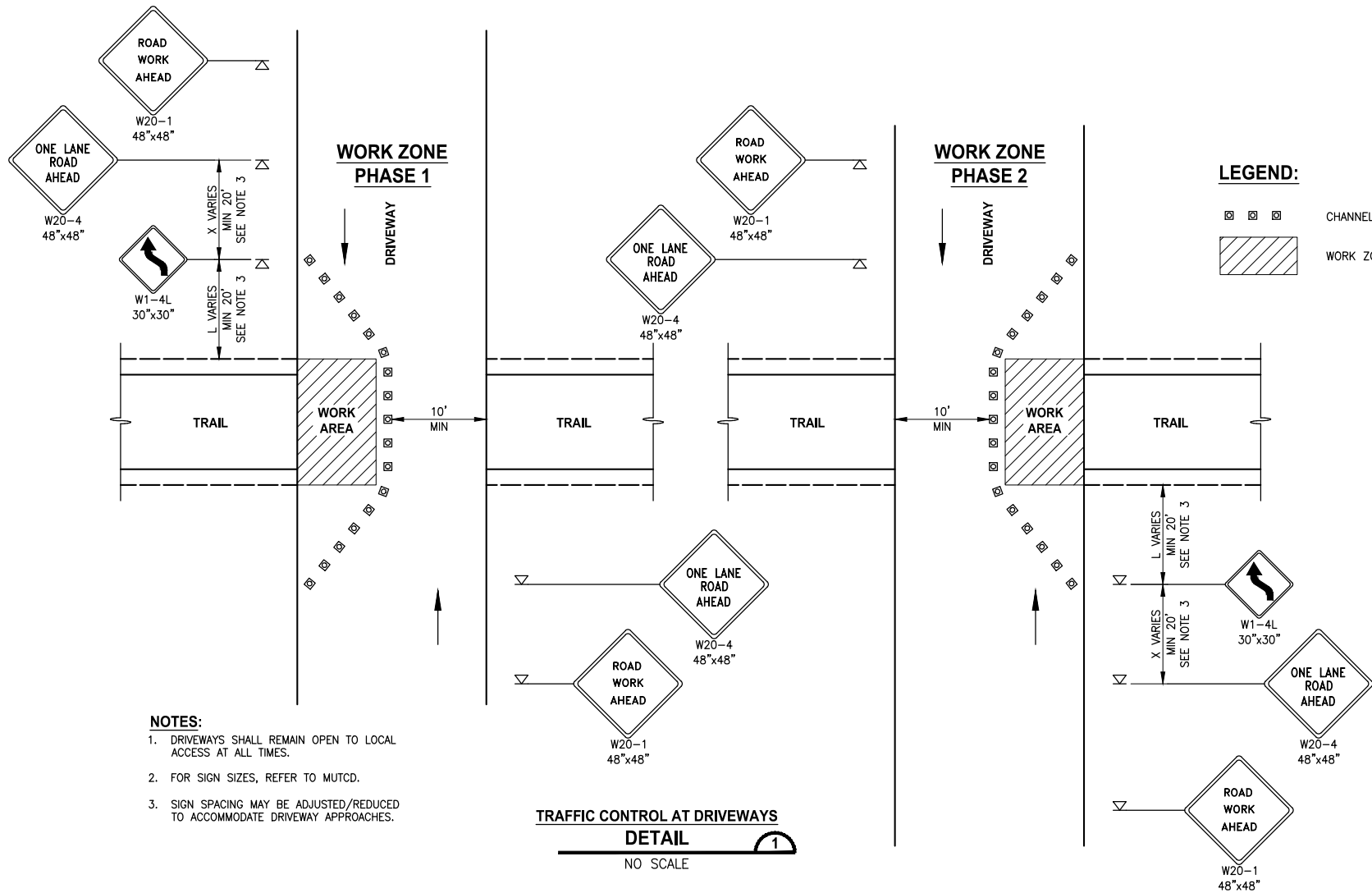
MISCELLANEOUS DETAILS

MD8

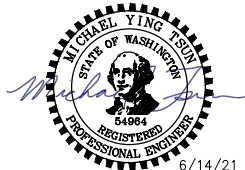
SHEET NO. 139 OF 213

MD8

PATH: U:\PSO\Projects\Clients\1521-KingCo\554-1521-075-ELST\99Sect\CADD\Phase 19\T03 Civil\Wg-Phase2\ PLOTTED BY: purgaban DATE: Monday, June 14, 2021 9:28:29 PM LAYOUT: MD9



CONFORMED DRAWINGS



Parametrix
ENGINEERING · PLANNING · ENVIRONMENTAL SCIENCES

719 2ND AVENUE, SUITE 200 | SEATTLE, WA 98104
P 206.394.3700
WWW.PARAMETRIX.COM

PROJECT NAME

**EAST LAKE SAMMAMISH
MASTER PLAN TRAIL
SOUTH SAMMAMISH SEGMENT B - PHASE 2**

SAMMAMISH, WA

MISCELLANEOUS DETAILS

SHEET NO.
140 OF 213

MD9

**CITY OF SAMMAMISH PUBLIC WORKS
DEVELOPMENT REVIEW**

These drawings have been reviewed for compliance with City of Sammamish Clearing and Grading and Stormwater requirements and also in accordance with the requirements as established in the Settlement Agreement between King County vs. City of Sammamish No. C17-0921 JCC and King County vs. City of Sammamish No. 17-2-29922-7 SEA and have been deemed **ACCEPTABLE**. The reviewer accepts no responsibility for any errors and/or omissions made by the preparer of these drawings.

17 February 2022

REVISIONS	DATE	BY	DESIGNED
			M. TSUN
			DRAWN
			B. PURGANAN
			CHECKED
			Y. HO
			APPROVED
			J. BAILEY

**ONE INCH AT FULL SCALE.
IF NOT, SCALE ACCORDINGLY**

FILE NAME
BL1521075P19T03MD-01

JOB No.
554-1521-075 P19 T03

DATE
JUNE 2021