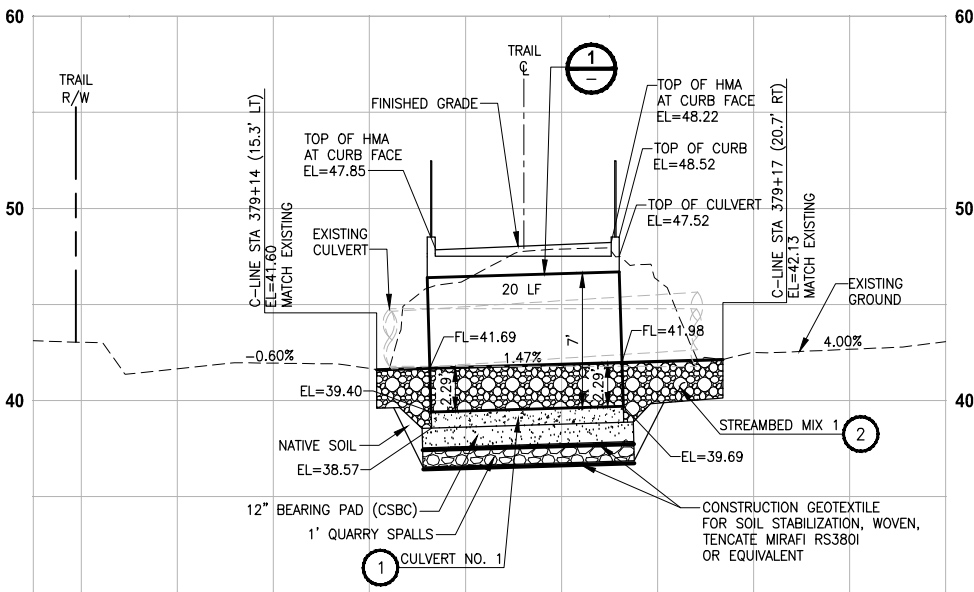
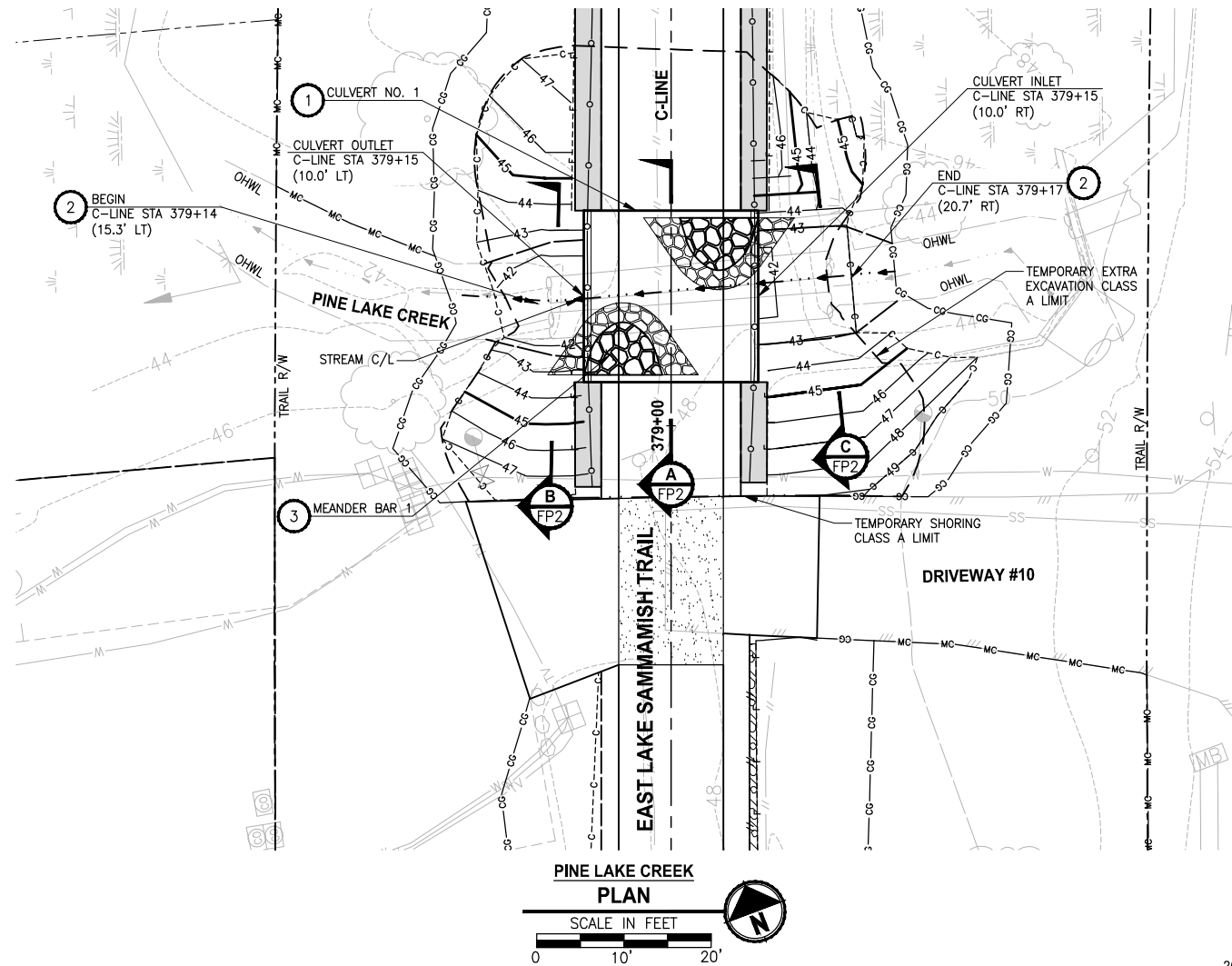
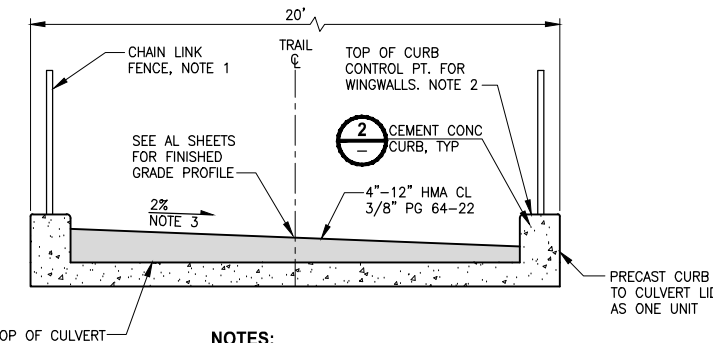


U:\P50\Projects\Clients\1521-075-ELST\99Sves\CADD\Phase 19\T03 Civil\Draw-Phase2\ PLOTTED BY: purgubut DATE: Monday, June 14, 2021 5:23:42 PM LAYOUT: FP1



PINE LAKE CREEK
PROFILE C-LINE STA 379+15

HORIZ: 1"=10'
VERT: 1"=5'

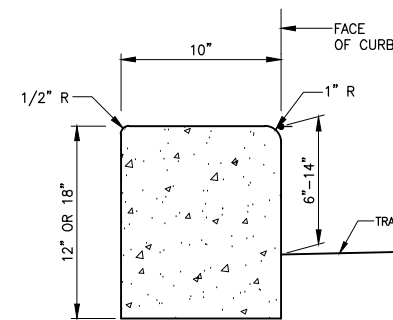


NOTES:

- CHAIN LINK FENCE SHALL BE IN LINE WITH CURBS. IF FENCE SECTION CANNOT SPAN THE CULVERT, THEN POST SHALL BE CURB MOUNTED TO CONCRETE CURB. SEE DETAIL 3 THIS SHEET.
- WINGWALLS SHALL BE PRECAST AND PLACED TO MATCH THE TOP ELEVATION OF CURBS.
- SLOPE DIRECTION VARIES. SEE SHEET CS1 FOR CROSS SLOPE SCHEDULE.

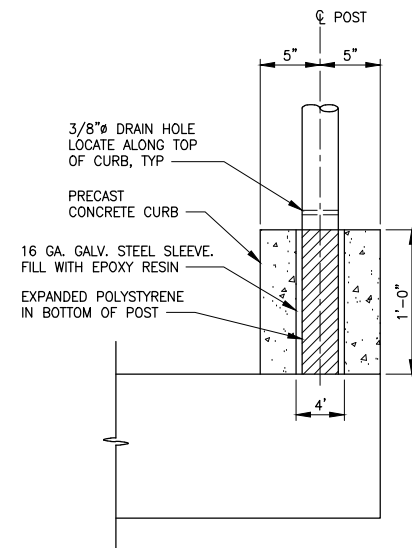
CULVERT COVER
DETAIL

NOT TO SCALE



PRECAST CEMENT CONCRETE CURB
DETAIL

NOT TO SCALE



CHAIN LINK FENCE CURB MOUNT
DETAIL

NOT TO SCALE

STREAM CONSTRUCTION NOTES:

- CONTRACTOR DESIGNED BURIED STRUCTURE SHALL BE PRECAST CONCRETE SPLIT BOX CULVERT PER WSDOT SPECIFICATION 6-20.3 AND INCLUDE ASSOCIATED WINGWALLS AND HEADWALLS.
- CONSTRUCT STREAMBED PER SPECIAL PROVISIONS SECTION 8-32. SEE SHEET FP2 FOR STREAMBED MIX AND CHANNEL SECTION DETAILS.
- MEANDER BAR, PER SPECIAL PROVISIONS SECTION 8-32. SEE SHEET FP3 FOR DETAILS.

GENERAL NOTES:

- CONSTRUCTION ACTIVITY FOR CULVERTS SHALL NOT OCCUR UNTIL AFTER STRUCTURAL ENGINEERING APPROVAL IS OBTAINED.
- BOX CULVERTS AND STREAM WORK BELOW ORDINARY HIGH WATER LINE SHALL ONLY OCCUR BETWEEN JULY 1 AND SEPTEMBER 30 PER HPA APPROVAL CONDITIONS IN APPENDIX A OF THE SPECIAL PROVISIONS.

CITY OF SAMMAMISH PUBLIC WORKS
DEVELOPMENT REVIEW

These drawings have been reviewed for compliance with City of Sammamish Clearing and Grading and Stormwater requirements and also in accordance with the requirements as established in the Settlement Agreement between King County vs. City of Sammamish No. C17-0921 JCC and King County vs. City of Sammamish No. 17-2-29922-7 SEA and have been deemed ACCEPTABLE. The reviewer accepts no responsibility for any errors and/or omissions made by the preparer of these drawings.

17 February 2022

CITY OF SAMMAMISH APPROVAL

City Engineer

Date

Community Development

Date

CONFORMED DRAWINGS



6/14/21

Parametrix
ENGINEERING · PLANNING · ENVIRONMENTAL SCIENCES

719 2ND AVENUE, SUITE 200 | SEATTLE, WA 98104
P 206.394.3700
WWW.PARAMETRIX.COM

PROJECT NAME

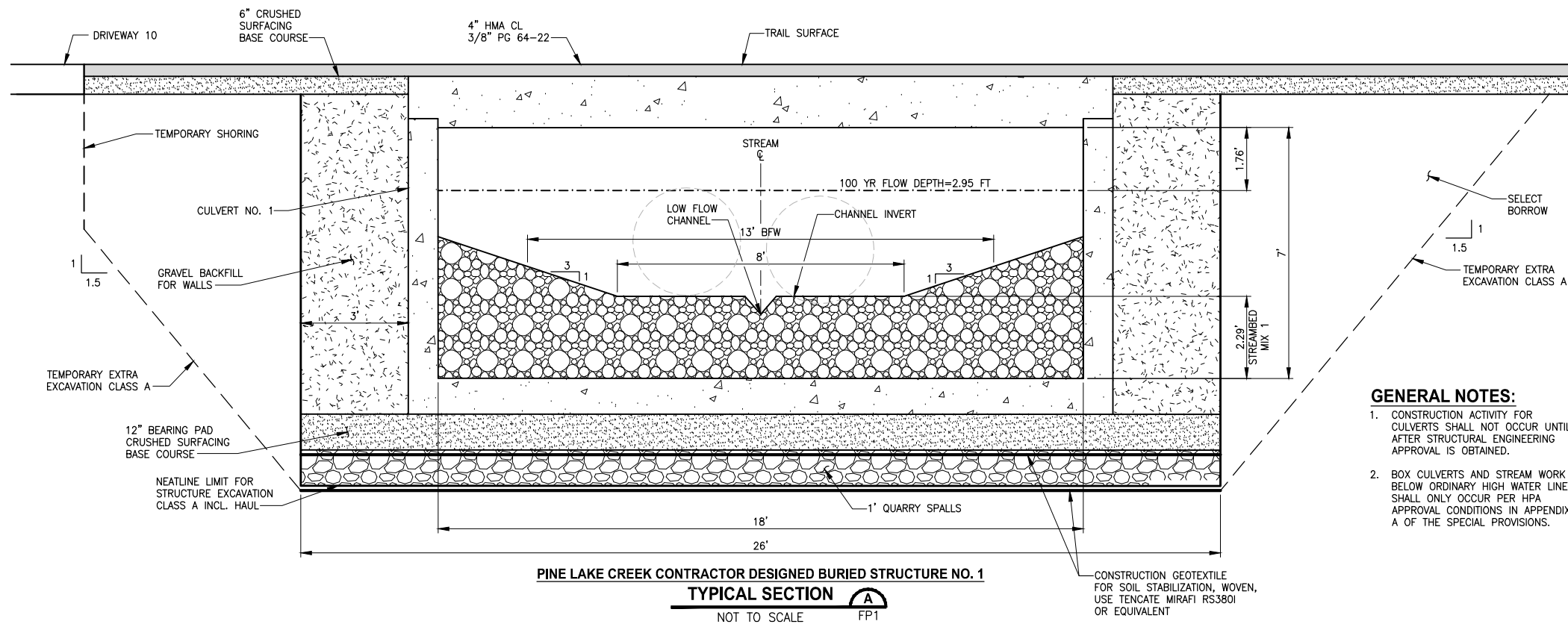
EAST LAKE SAMMAMISH
MASTER PLAN TRAIL
SOUTH SAMMAMISH SEGMENT B - PHASE 2
SAMMAMISH, WA

FISH PASSAGE CULVERTS

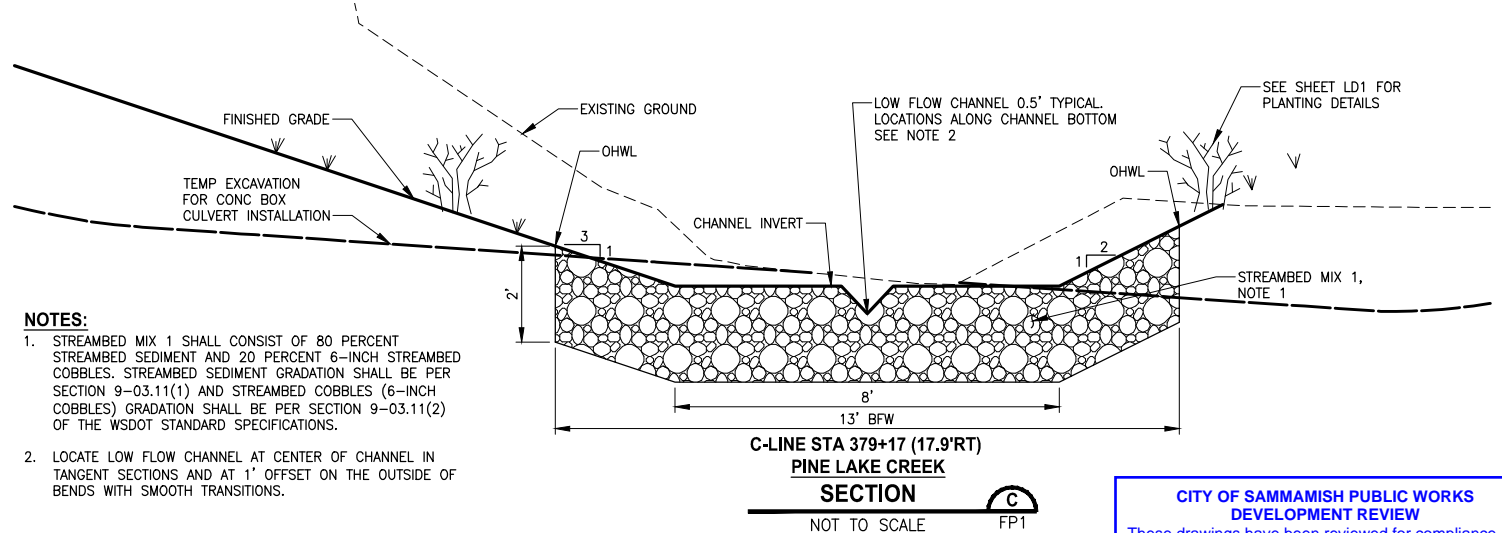
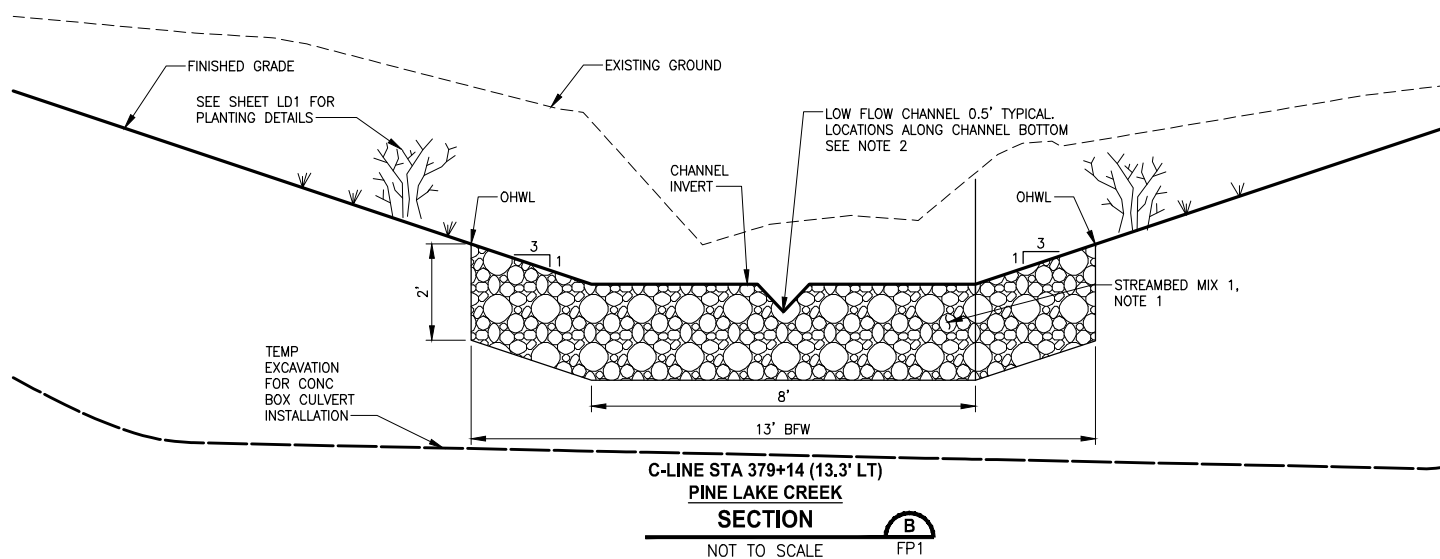
SHEET NO.
82 OF 213

FP1

U:\P50\Projects\Clients\1521-KingCo\554-1521-075-ELST\99Sves\CADD\Phase 19\T03_Civil\Draw-Phase2\ PLOTTED BY: purgubut DATE: Monday, June 14, 2021 5:23:54 PM LAYOUT: FP2



- GENERAL NOTES:**
- CONSTRUCTION ACTIVITY FOR CULVERTS SHALL NOT OCCUR UNTIL AFTER STRUCTURAL ENGINEERING APPROVAL IS OBTAINED.
 - BOX CULVERTS AND STREAM WORK BELOW ORDINARY HIGH WATER LINE SHALL ONLY OCCUR PER HPA APPROVAL CONDITIONS IN APPENDIX A OF THE SPECIAL PROVISIONS.



- NOTES:**
- STREAMBED MIX 1 SHALL CONSIST OF 80 PERCENT STREAMBED SEDIMENT AND 20 PERCENT 6-INCH STREAMBED COBBLES. STREAMBED SEDIMENT GRADATION SHALL BE PER SECTION 9-03.11(1) AND STREAMBED COBBLES (6-INCH COBBLES) GRADATION SHALL BE PER SECTION 9-03.11(2) OF THE WSDOT STANDARD SPECIFICATIONS.
 - LOCATE LOW FLOW CHANNEL AT CENTER OF CHANNEL IN TANGENT SECTIONS AND AT 1' OFFSET ON THE OUTSIDE OF BENDS WITH SMOOTH TRANSITIONS.

CITY OF SAMMAMISH PUBLIC WORKS DEVELOPMENT REVIEW

These drawings have been reviewed for compliance with City of Sammamish Clearing and Grading and Stormwater requirements and also in accordance with the requirements as established in the Settlement Agreement between King County vs. City of Sammamish No. C17-0921 JCC and King County vs. City of Sammamish No. 17-2-29922-7 SEA and have been deemed **ACCEPTABLE**. The reviewer accepts no responsibility for any errors and/or omissions made by the preparer of these drawings.

17 February 2022

CONFORMED DRAWINGS



REVISIONS	DATE	BY	DESIGNED
			C. BUITRAGO
			DRAWN
			B. PURGANAN
			CHECKED
			Y. HO
			APPROVED
			J. BAILEY

ONE INCH AT FULL SCALE.
IF NOT, SCALE ACCORDINGLY

FILE NAME
BL1521075P19T03FP-01

JOB No.
554-1521-075 P19 T03

DATE
JUNE 2021

Parametrix
ENGINEERING · PLANNING · ENVIRONMENTAL SCIENCES

719 2ND AVENUE, SUITE 200 | SEATTLE, WA 98104
P 206.394.3700
WWW.PARAMETRIX.COM

PROJECT NAME

**EAST LAKE SAMMAMISH
MASTER PLAN TRAIL
SOUTH SAMMAMISH SEGMENT B - PHASE 2**

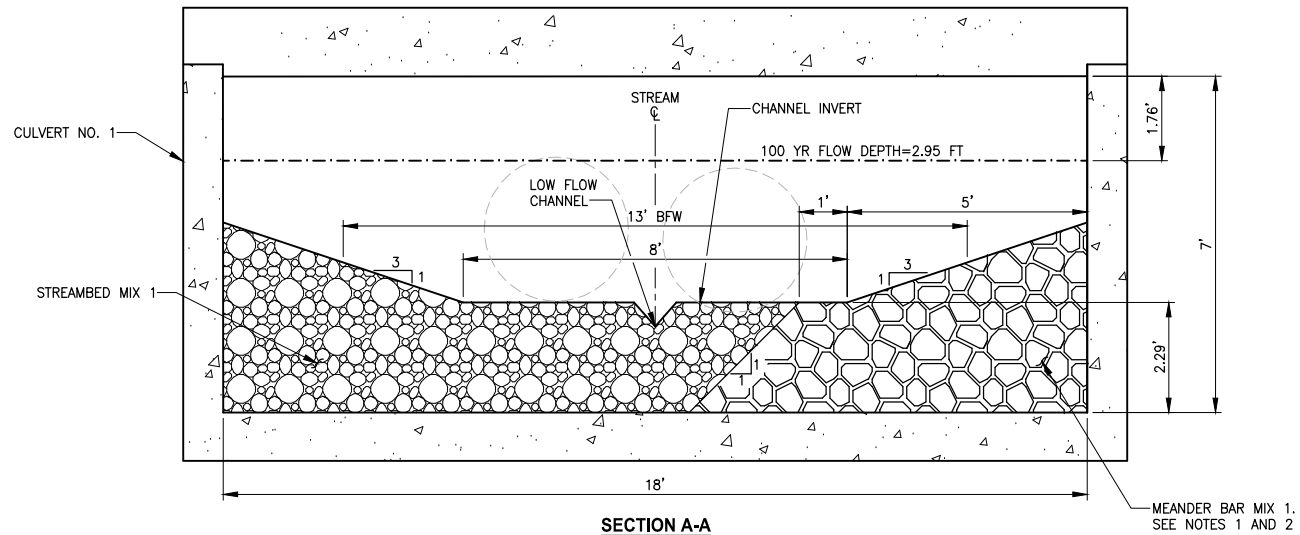
SAMMAMISH, WA

FISH PASSAGE CULVERTS

SHEET NO.
83 OF 213

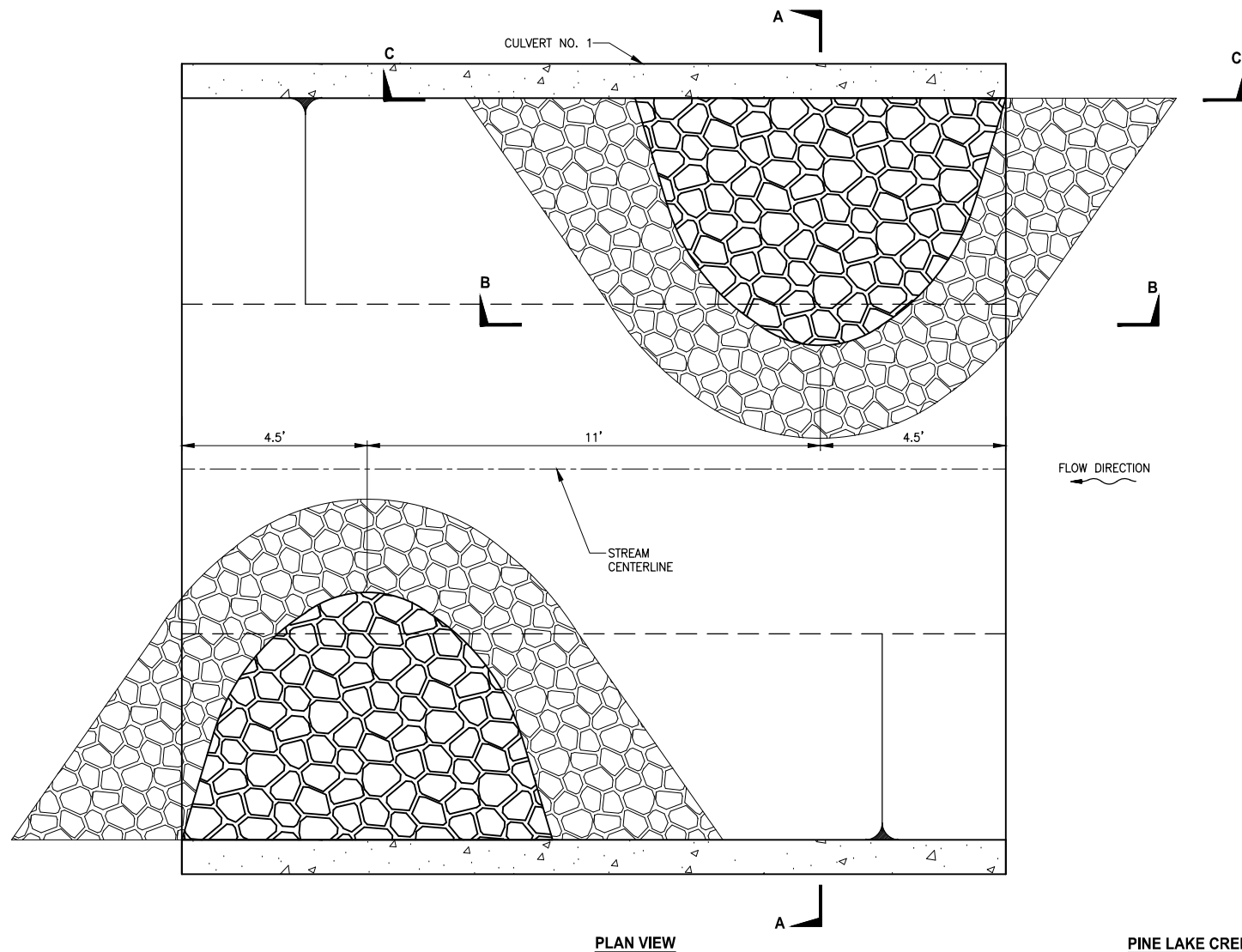
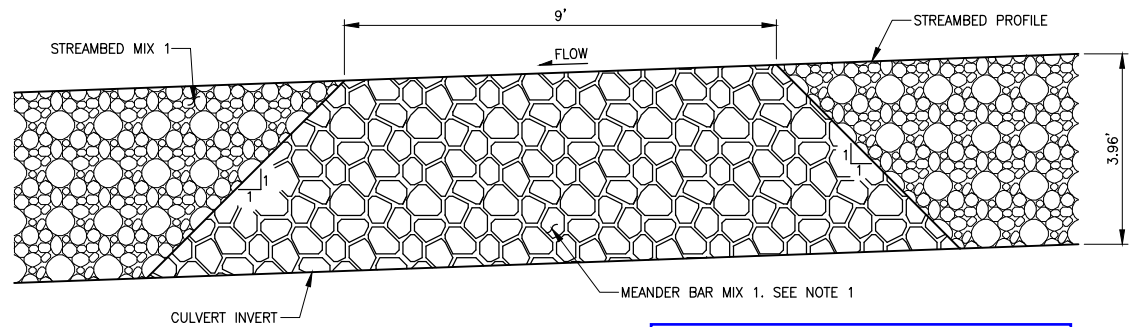
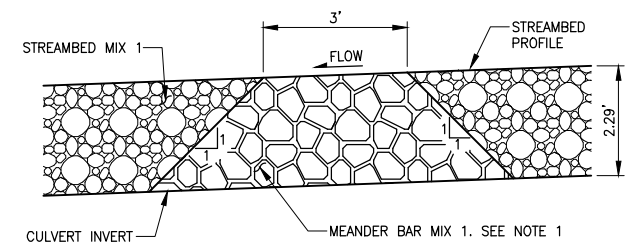
FP2

PATH: U:\P50\Projects\Clients\1521-KingCo\554-1521-075-ELST\985\cadd\Phase 19\T03_Civil\DWG-Phase2\ PLOTTED BY: purgubut DATE: Monday, June 14, 2021 5:24:17 PM LAYOUT: FP3



NOTES:

1. MEANDER BAR MIX 1 SHALL CONSIST OF 30 PERCENT STREAMBED SEDIMENT AND 70 PERCENT 6-INCH COBBLES. STREAMBED SEDIMENT GRADATION SHALL BE PER SECTION 9-03.11(1) AND STREAMBED COBBLES (6-INCH) SHALL BE PER SECTION 9-03.11(2) OF THE WSDOT STANDARD SPECIFICATION.
2. CONTRACTOR SHALL INSTALL MEANDER BAR MIX PRIOR TO PLACING STREAMBED MATERIAL MIX.



**PINE LAKE CREEK MEANDER BAR
DETAIL**

NOT TO SCALE

1
FP1

CONFORMED DRAWINGS



6/14/21

Parametrix

ENGINEERING · PLANNING · ENVIRONMENTAL SCIENCES

719 2ND AVENUE, SUITE 200 | SEATTLE, WA 98104
P 206.394.3700
WWW.PARAMETRIX.COM

PROJECT NAME

**EAST LAKE SAMMAMISH
MASTER PLAN TRAIL
SOUTH SAMMAMISH SEGMENT B - PHASE 2**
SAMMAMISH, WA

**CITY OF SAMMAMISH PUBLIC WORKS
DEVELOPMENT REVIEW**

These drawings have been reviewed for compliance with City of Sammamish Clearing and Grading and Stormwater requirements and also in accordance with the requirements as established in the Settlement Agreement between King County vs. City of Sammamish No. C17-0921 JCC and King County vs. City of Sammamish No. 17-2-29922-7 SEA and have been deemed **ACCEPTABLE**. The reviewer accepts no responsibility for any errors and/or omissions made by the preparer of these drawings.

17 February 2022

CITY OF SAMMAMISH APPROVAL

City Engineer

Date

Community Development

Date

FISH PASSAGE CULVERTS

SHEET NO.
84 OF 213

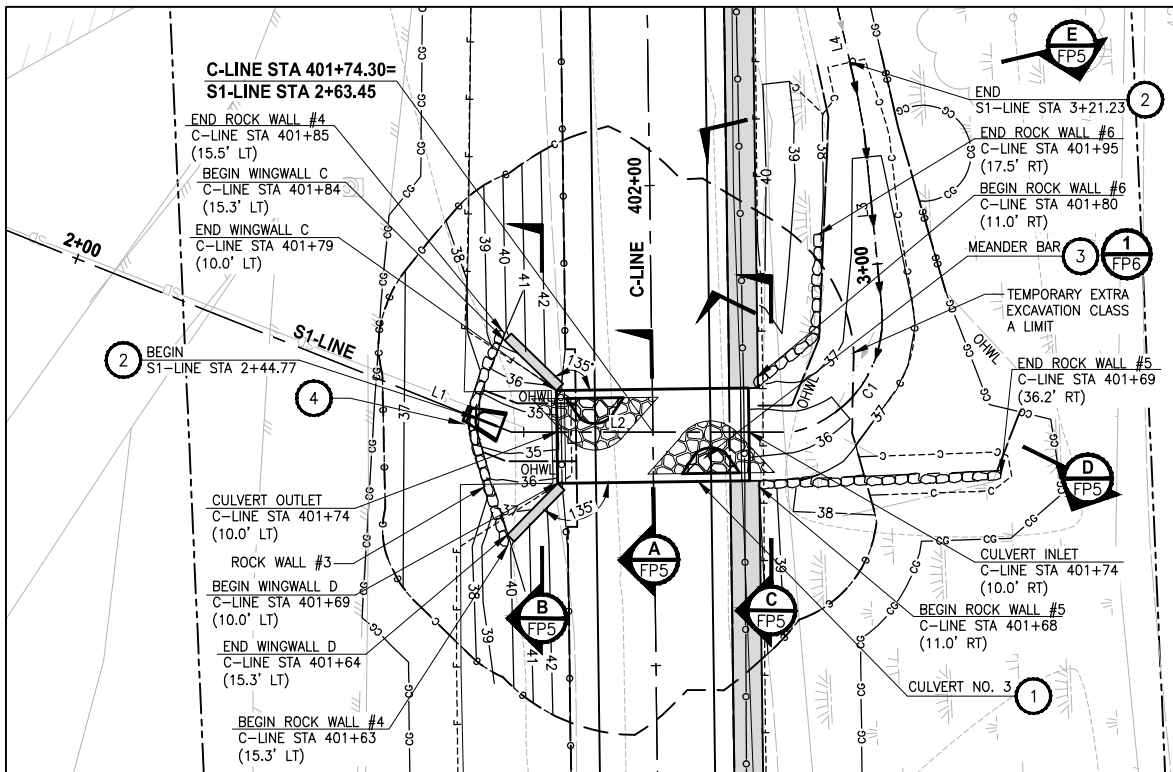
FP3

REVISIONS	DATE	BY	DESIGNED
			C. BUITRAGO
			DRAWN
			B. PURGANAN
			CHECKED
			Y. HO
			APPROVED
			J. BAILEY

ONE INCH AT FULL SCALE.
IF NOT, SCALE ACCORDINGLY

FILE NAME
BL1521075P19T03FP-01
JOB No.
554-1521-075 P19 T03
DATE
JUNE 2021

U:\P50\Projects\Clients\1521-KingCo\554-1521-075-ELST\985\CA\Phase 19\T03 CHA\DWG-Phase2\ PLOTTED BY: purgubut DATE: Monday, June 14, 2021 5:24:43 PM LAYOUT: FP4



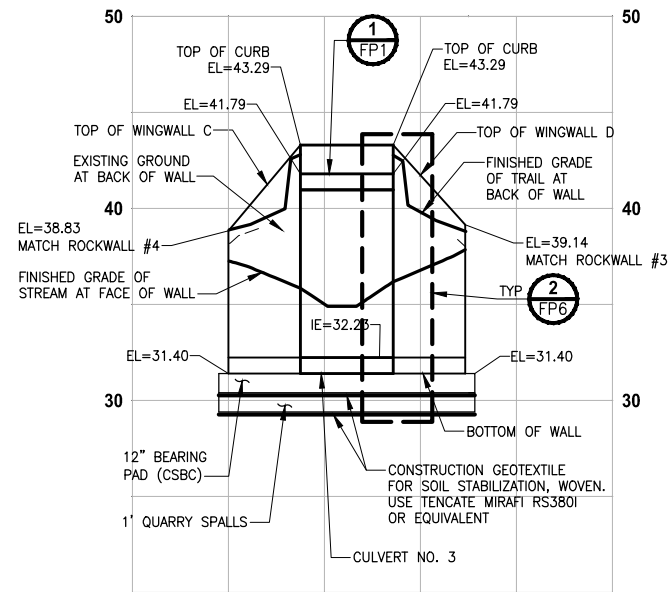
STREAM #0155
PLAN
SCALE IN FEET
0 10' 20'

S1-LINE LINE TABLE

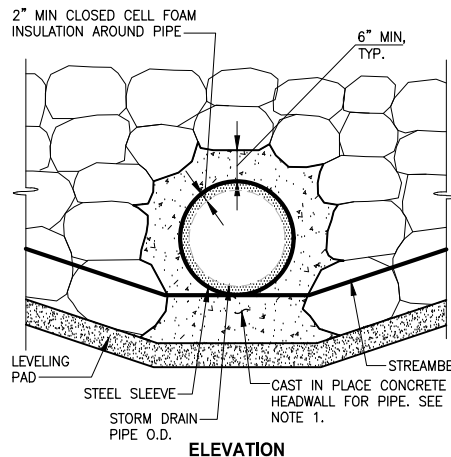
LINE	LENGTH	BEARING
L1	86.66	S27° 19' 25.82"E
L2	29.19	S49° 05' 44.13"E
L3	11.85	N35° 16' 31.85"E
L4	23.96	N28° 13' 23.84"E

S1-LINE CURVE TABLE

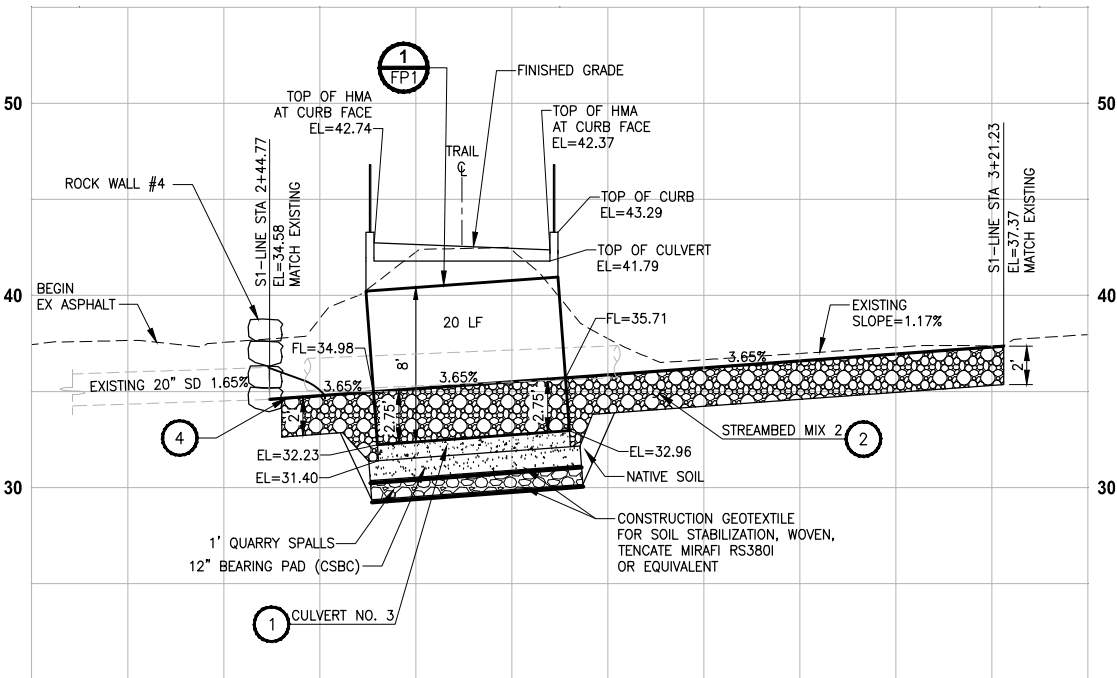
CURVE	LENGTH	RADIUS	DELTA
C1	17.72	12.03	84°25'05"



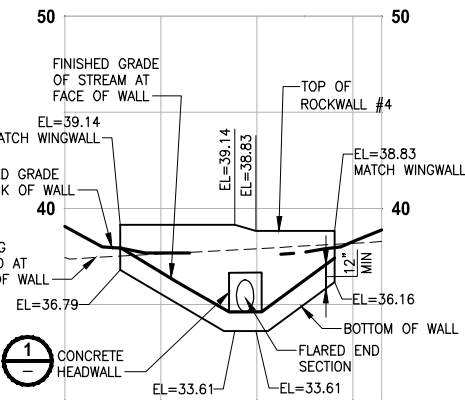
STREAM #0155
PROFILE CULVERT 3 WINGWALLS C & D
HORIZ: 1"=10'
VERT: 1"=5'



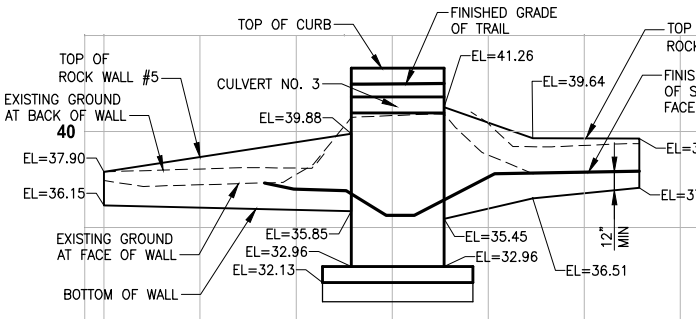
CONCRETE HEADWALL AND SLEEVE FOR ROCK WALL
DETAIL
NOT TO SCALE



STREAM #0155
PROFILE C-LINE STA 401+74
HORIZ: 1"=10'
VERT: 1"=5'



STREAM #0155
PROFILE ROCK WALL #4
HORIZ: 1"=10'
VERT: 1"=5'



STREAM #0155
PROFILE ROCK WALL #5 & #6
HORIZ: 1"=10'
VERT: 1"=5'

STREAM CONSTRUCTION NOTES:

- CONTRACTOR DESIGNED BURIED STRUCTURE SHALL BE PRECAST CONCRETE SPLIT BOX CULVERT PER WSDOT SPECIFICATION 6-20.3 AND INCLUDE ASSOCIATED WINGWALLS AND HEADWALLS.
- CONSTRUCT STREAMBED PER SPECIAL PROVISIONS SECTION 8-32. SEE SHEET FP5 FOR STREAMBED MIX AND CHANNEL SECTION DETAILS.
- MEANDER BAR, PER SPECIAL PROVISIONS SECTION 8-32. SEE SHEET FP6 FOR DETAILS.
- FLARED END SECTION SHALL BE PER WSDOT STANDARD PLAN 8-70.60-01, DESIGN A TYPE 1.

NOTES:

- CONCRETE HEADWALL SHALL BE CONSTRUCTED OF 4,000 PSI REINFORCED CONCRETE. REINFORCEMENT SHALL HAVE A YIELD STRENGTH FY=60,000 PSI.
- L IS EQUAL TO THE LARGER OF THE LENGTH OF THE LARGEST ROCK NEXT TO THE PIPE OR 1'-6".
- CASING PIPE SHALL HAVE A 0.375" MIN WALL THICKNESS AND SHALL BE SMOOTH GRADE C STEEL, COMPLY WITH ASTM A139, AND HAVE A MIN 36,000 PSI YIELD. INSIDE DIAMETER OF STEEL CASING PIPE SHALL EXCEED THE OUTSIDE DIAMETER OF THE STORM DRAIN PIPE BY 4".

CITY OF SAMMAMISH PUBLIC WORKS
DEVELOPMENT REVIEW

These drawings have been reviewed for compliance with City of Sammamish Clearing and Grading and Stormwater requirements and also in accordance with the requirements as established in the Settlement Agreement between King County vs. City of Sammamish No. C17-0921 JCC and King County vs. City of Sammamish No. 17-2-29922-7 SEA and have been deemed ACCEPTABLE. The reviewer accepts no responsibility for any errors and/or omissions made by the preparer of these drawings.
Date
17 February 2022

CONFORMED DRAWINGS



Parametrix
ENGINEERING · PLANNING · ENVIRONMENTAL SCIENCES

719 2ND AVENUE, SUITE 200 | SEATTLE, WA 98104
P 206.394.3700
WWW.PARAMETRIX.COM

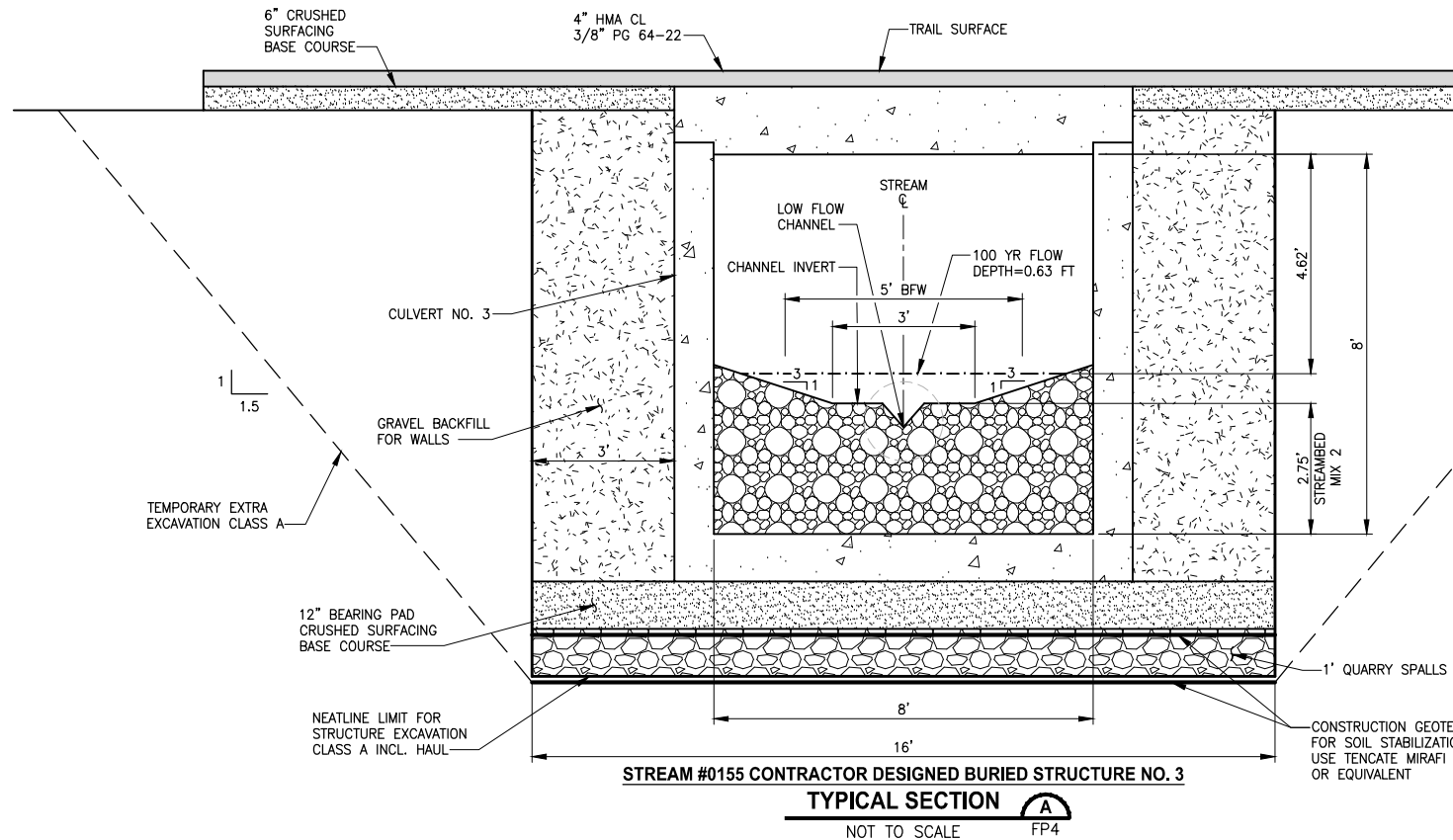
PROJECT NAME
EAST LAKE SAMMAMISH
MASTER PLAN TRAIL
SOUTH SAMMAMISH SEGMENT B - PHASE 2
SAMMAMISH, WA

FISH PASSAGE CULVERTS

SHEET NO.
85 OF 213

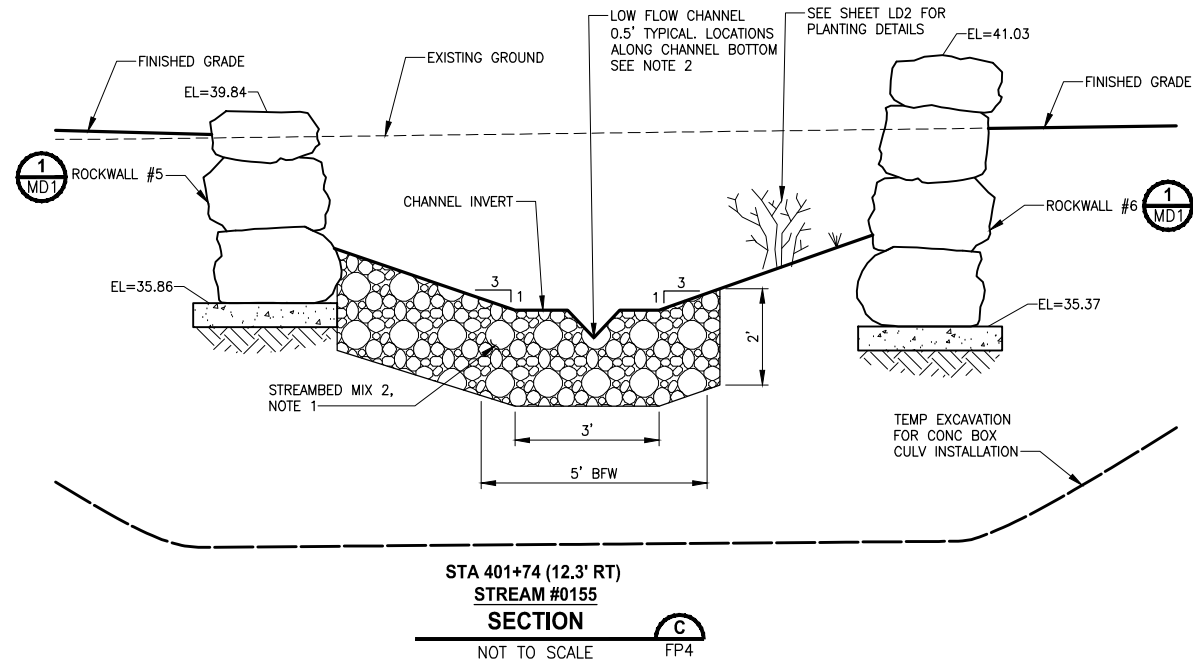
FP4

PATH: U:\P50\Projects\Clients\1521-KingCo\554-1521-075-ELST\99Sect\CADD\Phase 19\T03_Civil\Draw-Phase2\ PLOTTED BY: purgabut DATE: Monday, June 14, 2021 5:25:06 PM LAYOUT: FP5



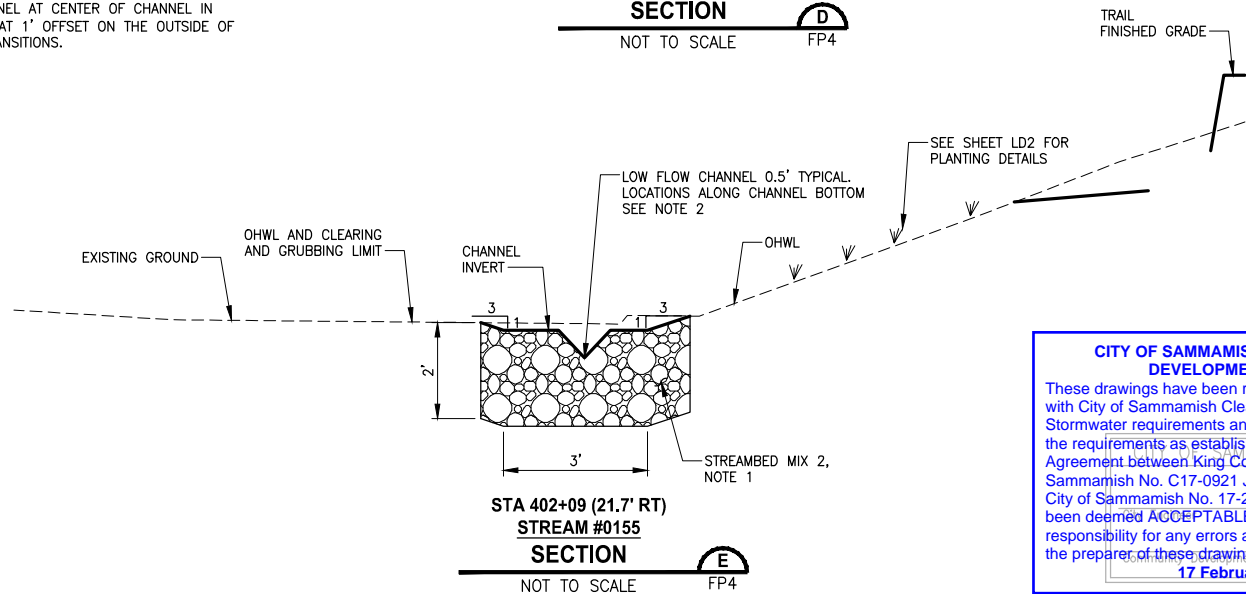
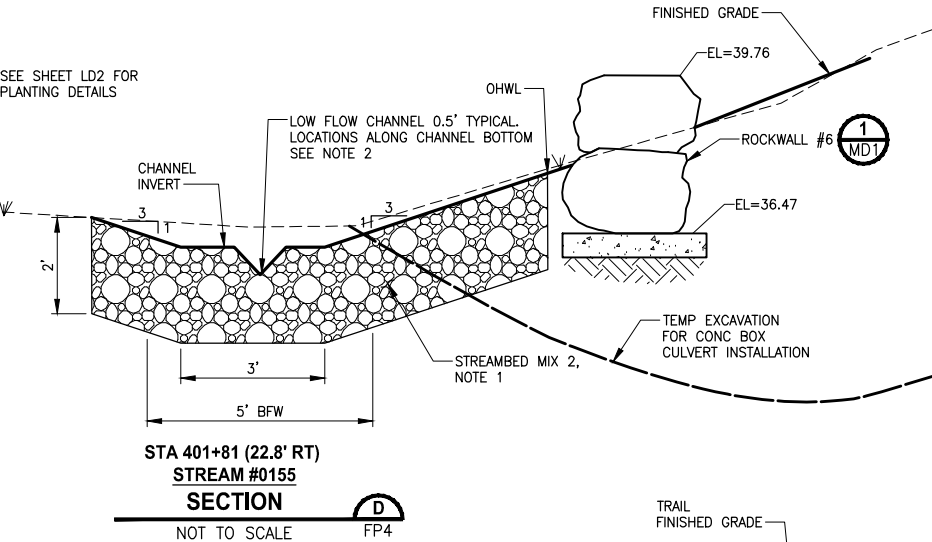
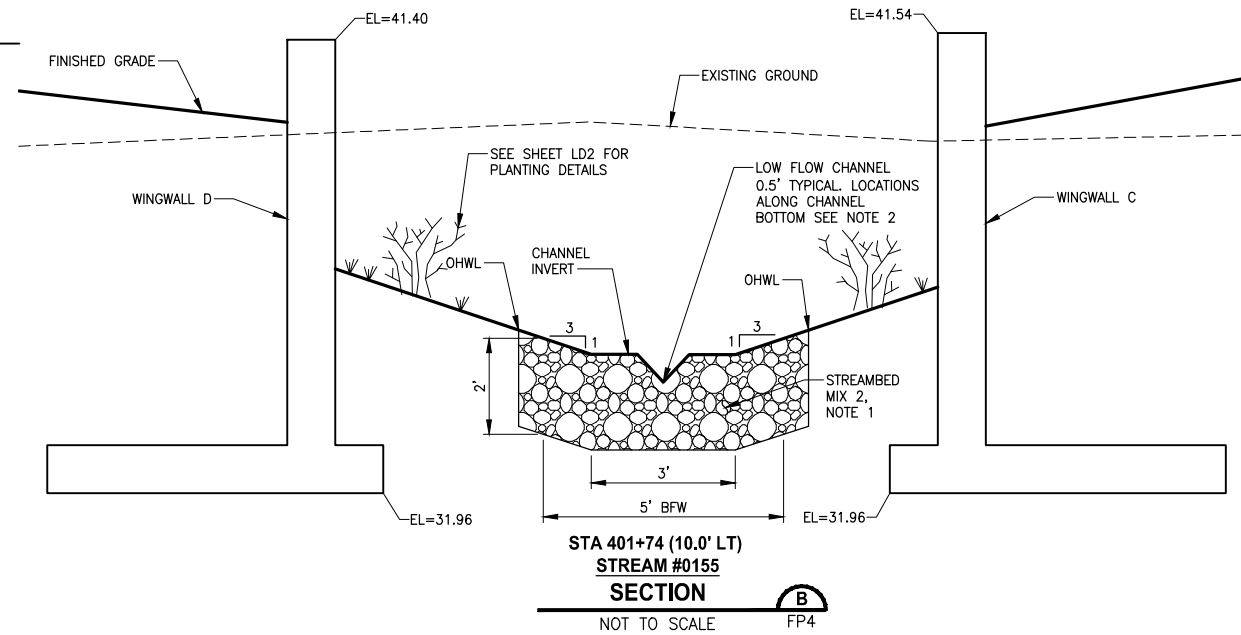
GENERAL NOTES:

1. CONSTRUCTION ACTIVITY FOR CULVERTS SHALL NOT OCCUR UNTIL AFTER STRUCTURAL ENGINEERING APPROVAL IS OBTAINED.
2. BOX CULVERTS AND STREAM WORK BELOW ORDINARY HIGH WATER LINE SHALL ONLY OCCUR PER HPA APPROVAL CONDITIONS IN APPENDIX A OF THE SPECIAL PROVISIONS.



NOTES:

1. STREAMBED MIX 2 SHALL CONSIST OF 100 PERCENT STREAMBED SEDIMENT. STREAMBED SEDIMENT GRADATION SHALL BE PER SECTION 9-03.11(1) OF THE WSDOT STANDARD SPECIFICATIONS.
2. LOCATE LOW FLOW CHANNEL AT CENTER OF CHANNEL IN TANGENT SECTIONS AND AT 1' OFFSET ON THE OUTSIDE OF BENDS WITH SMOOTH TRANSITIONS.



CONFORMED DRAWINGS



Parametrix

ENGINEERING · PLANNING · ENVIRONMENTAL SCIENCES

719 2ND AVENUE, SUITE 200 | SEATTLE, WA 98104
P 206.394.3700
WWW.PARAMETRIX.COM

PROJECT NAME

**EAST LAKE SAMMAMISH
MASTER PLAN TRAIL
SOUTH SAMMAMISH SEGMENT B - PHASE 2**
SAMMAMISH, WA

FISH PASSAGE CULVERTS

SHEET NO.
87 OF 213

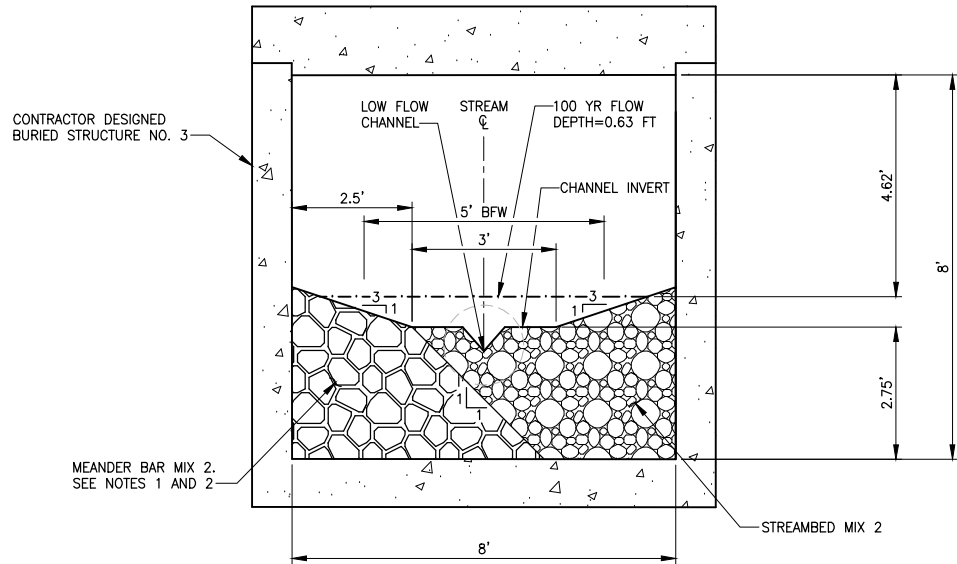
FP5

**CITY OF SAMMAMISH PUBLIC WORKS
DEVELOPMENT REVIEW**

These drawings have been reviewed for compliance with City of Sammamish Clearing and Grading and Stormwater requirements and also in accordance with the requirements as established in the Settlement Agreement between King County vs. City of Sammamish No. C17-0921 JCC and King County vs. City of Sammamish No. 17-2-29922-7 SEA and have been deemed **ACCEPTABLE**. The reviewer accepts no responsibility for any errors and/or omissions made by the preparer of these drawings.

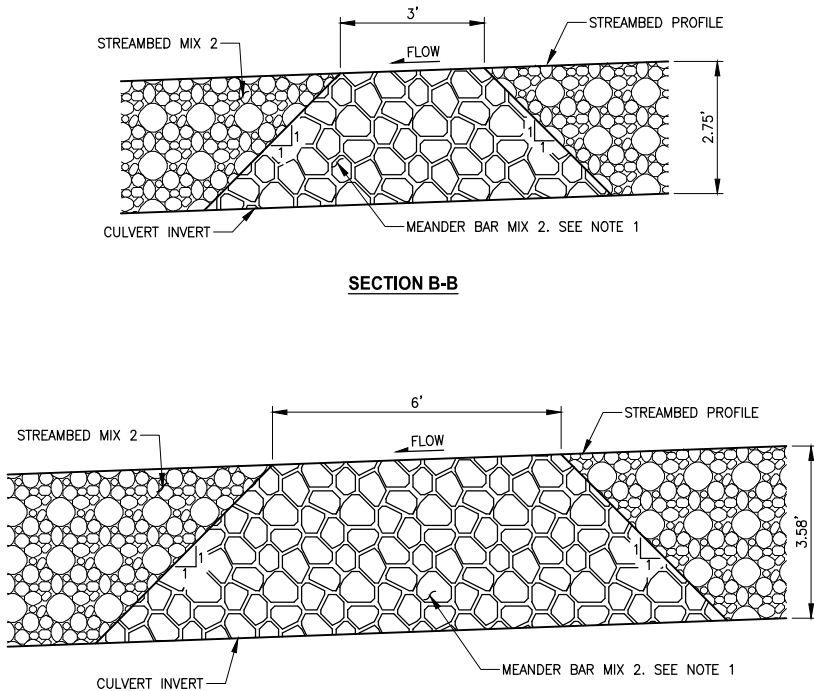
17 February 2022

PATH: U:\P50\Projects\Clients\1521-KingCo\554-1521-075-ELST\99Sves\CADD\Phase 19\T03_Civil\Draw-Phase2\ PLOTTED BY: purgubut DATE: Monday, June 14, 2021 5:25:17 PM LAYOUT: FP6



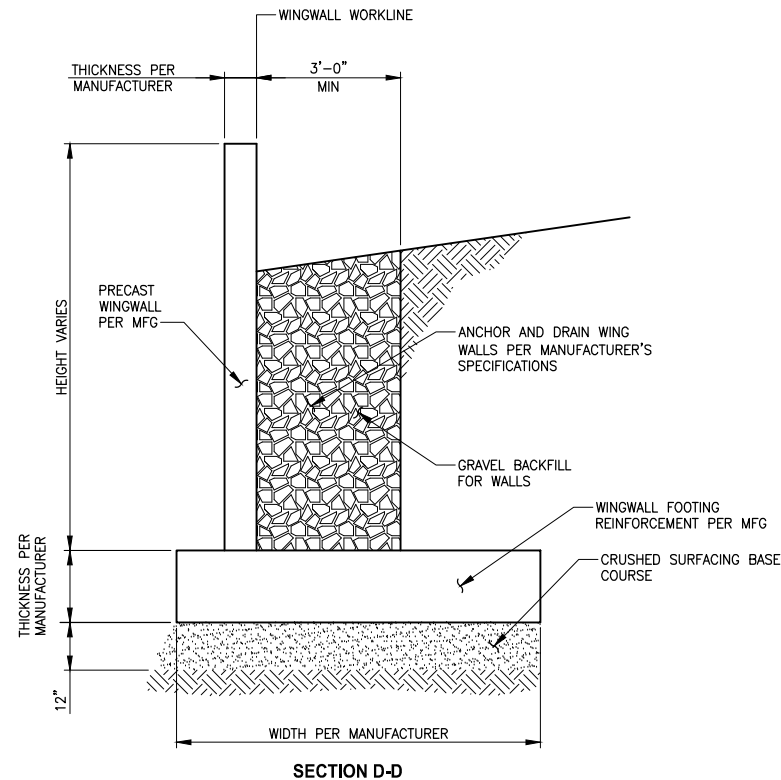
SECTION A-A

- NOTES:
1. MEANDER BAR MIX 2 SHALL CONSIST OF 40 PERCENT STREAMBED SEDIMENT AND 60 PERCENT 4-INCH COBBLES. STREAMBED SEDIMENT GRADATION SHALL BE PER SECTION 9-03.11(1) AND STREAMBED COBBLES (4-INCH) SHALL BE PER SECTION 9-03.11(2) OF THE WSDOT STANDARD SPECIFICATION.
 2. CONTRACTOR SHALL INSTALL MEANDER BAR MIX PRIOR TO PLACING STREAMBED MATERIAL MIX.

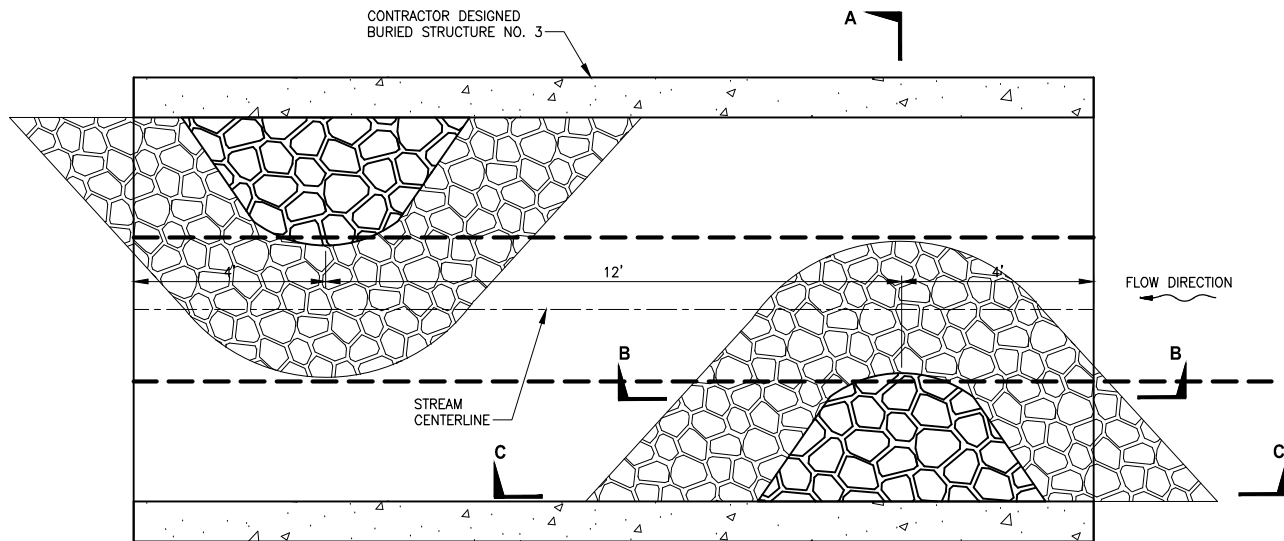


SECTION B-B

SECTION C-C



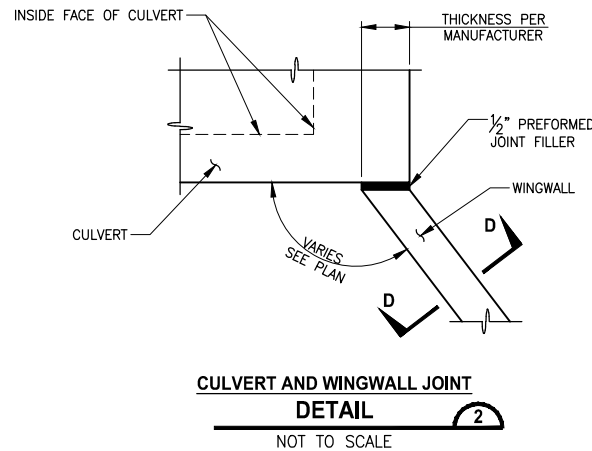
SECTION D-D



PLAN VIEW

STREAM #0155 MEANDER BAR PLAN
DETAIL 1
NOT TO SCALE FP3

CONFORMED DRAWINGS



CITY OF SAMMAMISH PUBLIC WORKS DEVELOPMENT REVIEW

These drawings have been reviewed for compliance with City of Sammamish Clearing and Grading and Stormwater requirements and also in accordance with the requirements as established in the Settlement Agreement between King County vs. City of Sammamish No. C17-0921 JCC and King County vs. City of Sammamish No. 17-2-29922-7 SEA and have been deemed ACCEPTABLE. The reviewer accepts no responsibility for any errors and/or omissions made by the preparer of these drawings.

17 February 2022

CITY OF SAMMAMISH APPROVAL	
City Engineer	Date
Community Development	Date

REVISIONS	DATE	BY	DESIGNED
			C. BUITRAGO
			DRAWN B. PURGANAN
			CHECKED Y. HO
			APPROVED J. BAILEY

ONE INCH AT FULL SCALE.
IF NOT, SCALE ACCORDINGLY

FILE NAME
BL1521075P19T03FP-01

JOB No.
554-1521-075 P19 T03

DATE
JUNE 2021



Parametrix
ENGINEERING . PLANNING . ENVIRONMENTAL SCIENCES

719 2ND AVENUE, SUITE 200 | SEATTLE, WA 98104
P 206.394.3700
WWW.PARAMETRIX.COM

PROJECT NAME

**EAST LAKE SAMMAMISH
MASTER PLAN TRAIL
SOUTH SAMMAMISH SEGMENT B - PHASE 2**

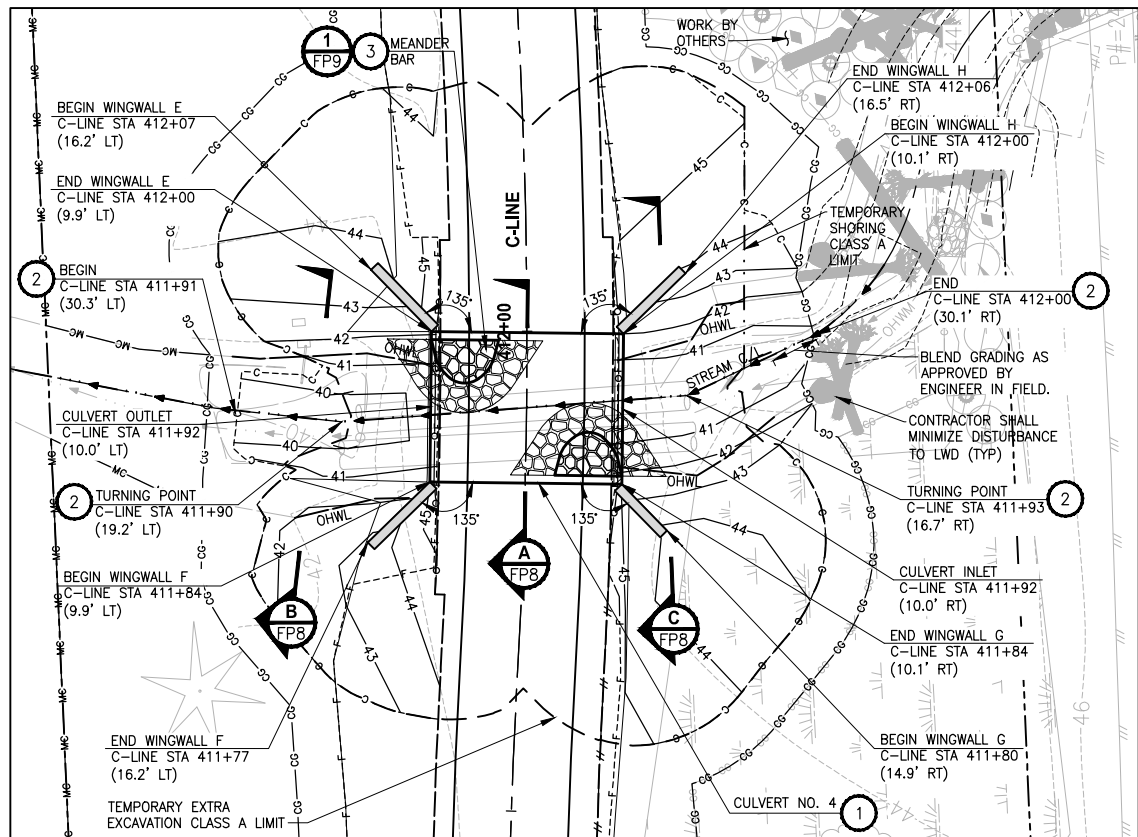
SAMMAMISH, WA

FISH PASSAGE CULVERTS

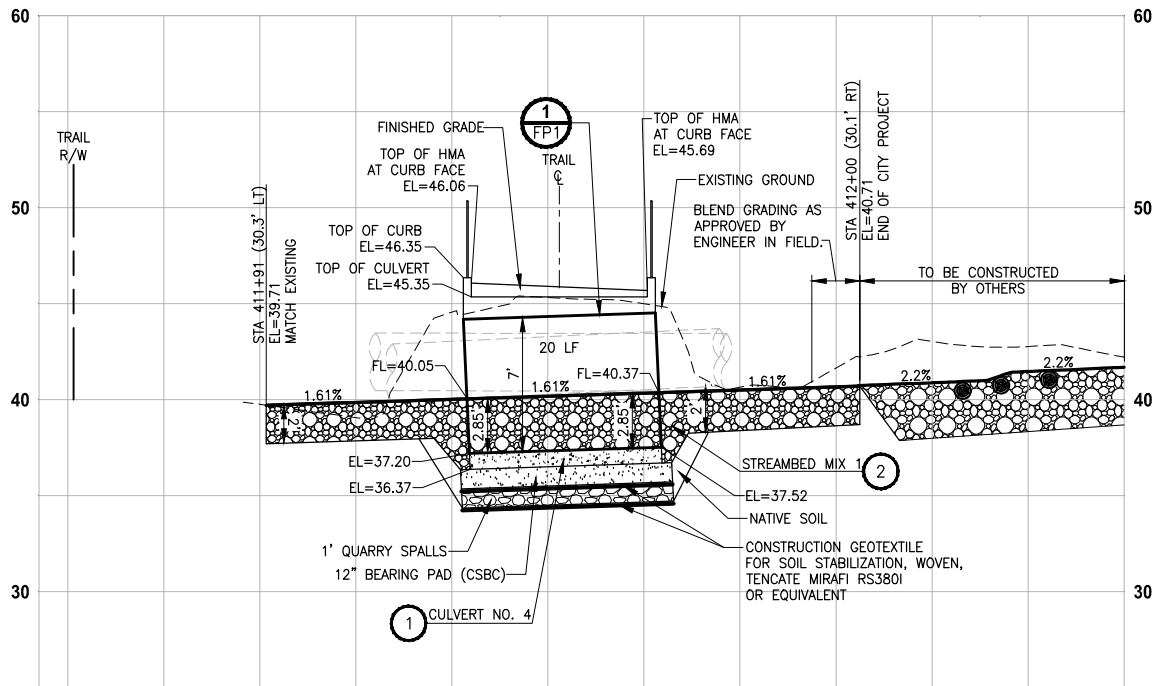
SHEET NO.
87 OF 213

FP6

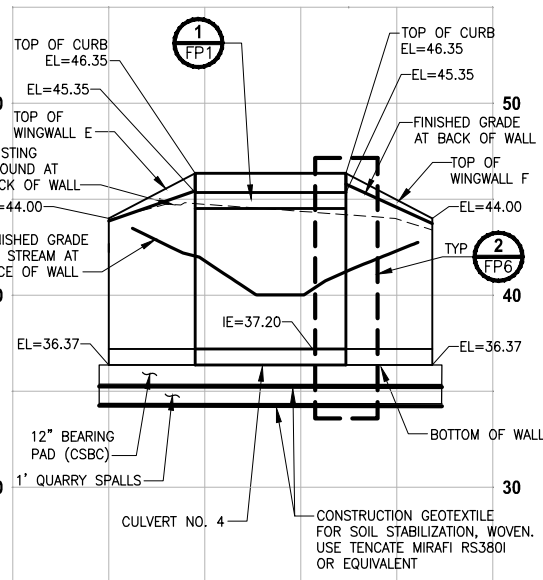
PATH: U:\P50\Projects\Clients\1521-KingCo\554-1521-075-ELST\985\cadd\Phase 19\T03 CWA\DWG-Phase2\ PLOTTED BY: purgaban DATE: Monday, June 14, 2021 5:25:38 PM LAYOUT: FP7



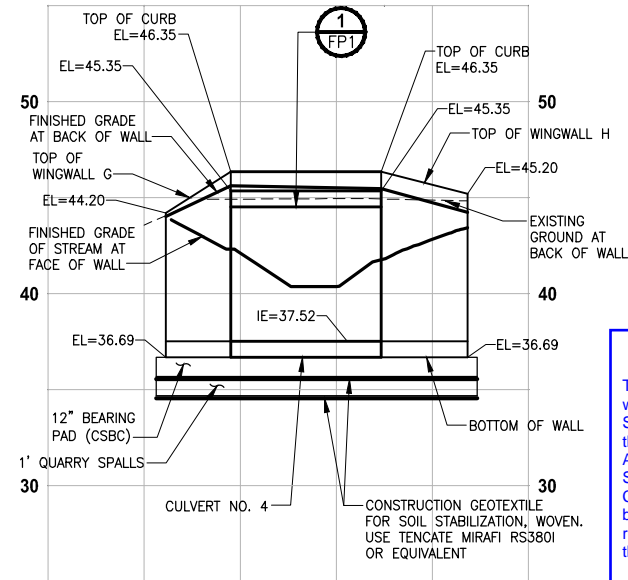
EBRIGHT CREEK
PLAN
SCALE IN FEET
0 10' 20'



EBRIGHT CREEK
PROFILE C-LINE STA 411+92
HORIZ: 1"=10'
VERT: 1"=5'



EBRIGHT CREEK
PROFILE CULVERT 4 WINGWALLS E & F
HORIZ: 1"=10'
VERT: 1"=5'



EBRIGHT CREEK
PROFILE CULVERT 4 WINGWALLS G & H
HORIZ: 1"=10'
VERT: 1"=5'

STREAM CONSTRUCTION NOTES:

1. CONTRACTOR DESIGNED BURIED STRUCTURE SHALL BE PRECAST CONCRETE SPLIT BOX CULVERT PER WSDOT SPECIFICATION 6-20.3 AND INCLUDE ASSOCIATED WINGWALLS AND HEADWALLS.
2. CONSTRUCT STREAMBED PER SPECIAL PROVISIONS SECTION 8-32. SEE SHEET FP8 FOR STREAMBED MIX AND CHANNEL SECTION DETAILS.
3. MEANDER BAR, PER SPECIAL PROVISIONS SECTION 8-32. SEE SHEET FP9 FOR DETAILS.

GENERAL NOTES:

1. CONSTRUCTION ACTIVITY FOR CULVERTS SHALL NOT OCCUR UNTIL AFTER STRUCTURAL ENGINEERING APPROVAL IS OBTAINED.
2. BOX CULVERTS AND STREAM WORK BELOW ORDINARY HIGH WATER LINE SHALL ONLY OCCUR BETWEEN JULY 1 AND SEPTEMBER 30 PER HPA APPROVAL CONDITIONS IN APPENDIX A OF THE SPECIAL PROVISIONS.

CITY OF SAMMAMISH PUBLIC WORKS DEVELOPMENT REVIEW
These drawings have been reviewed for compliance with City of Sammamish Clearing and Grading and Stormwater requirements and also in accordance with the requirements as established in the Settlement Agreement between King County vs. City of Sammamish No. C17-0921 JCC and King County vs. City of Sammamish No. 17-2-29922-7 SEA and have been deemed ACCEPTABLE. The reviewer accepts no responsibility for any errors and/or omissions made by the preparer of these drawings.
17 February 2022

CITY OF SAMMAMISH APPROVAL
City Engineer _____ Date _____
Community Development _____ Date _____

CONFORMED DRAWINGS



ONE INCH AT FULL SCALE, IF NOT, SCALE ACCORDINGLY
FILE NAME: BL1521075P19T03FP-01
JOB No.: 554-1521-075 P19 T03
DATE: JUNE 2021

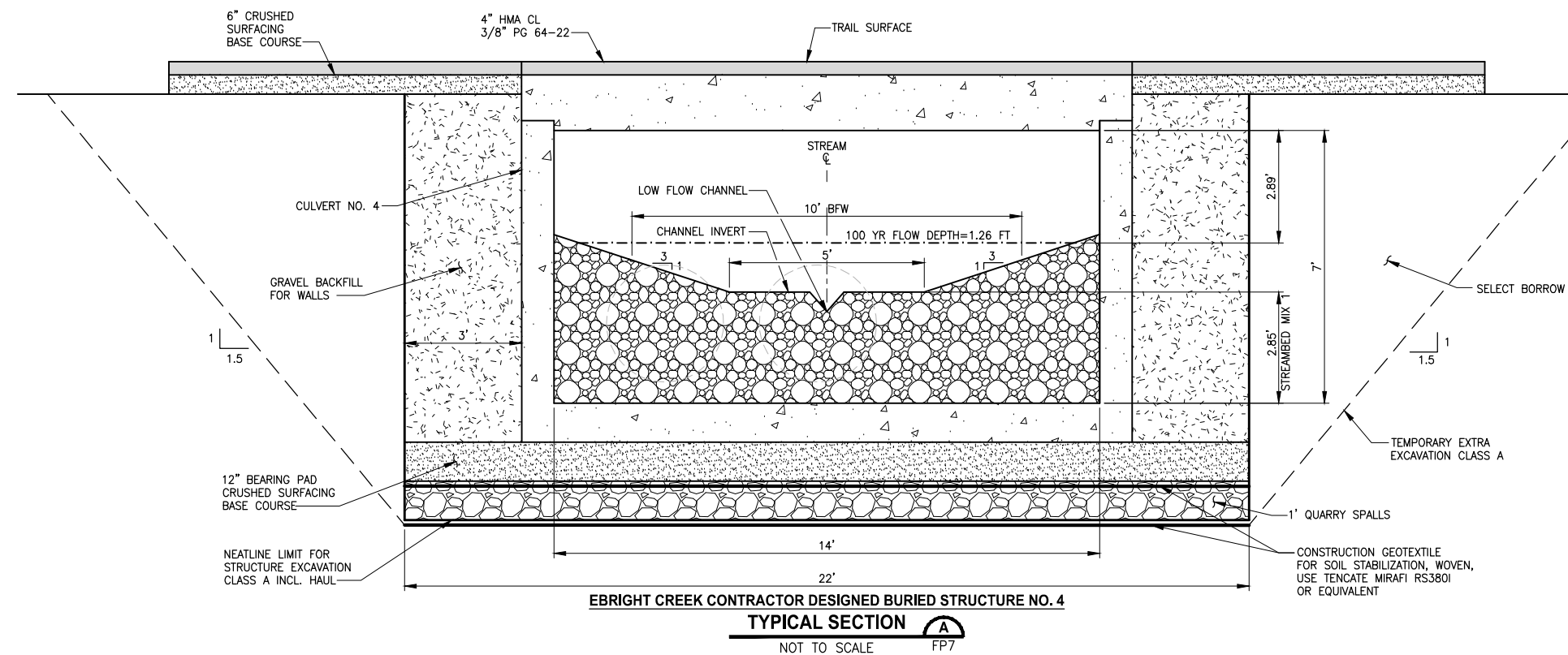
Parametrix
ENGINEERING · PLANNING · ENVIRONMENTAL SCIENCES
719 2ND AVENUE, SUITE 200 | SEATTLE, WA 98104
P 206.394.3700
WWW.PARAMETRIX.COM

PROJECT NAME
EAST LAKE SAMMAMISH MASTER PLAN TRAIL SOUTH SAMMAMISH SEGMENT B - PHASE 2
SAMMAMISH, WA

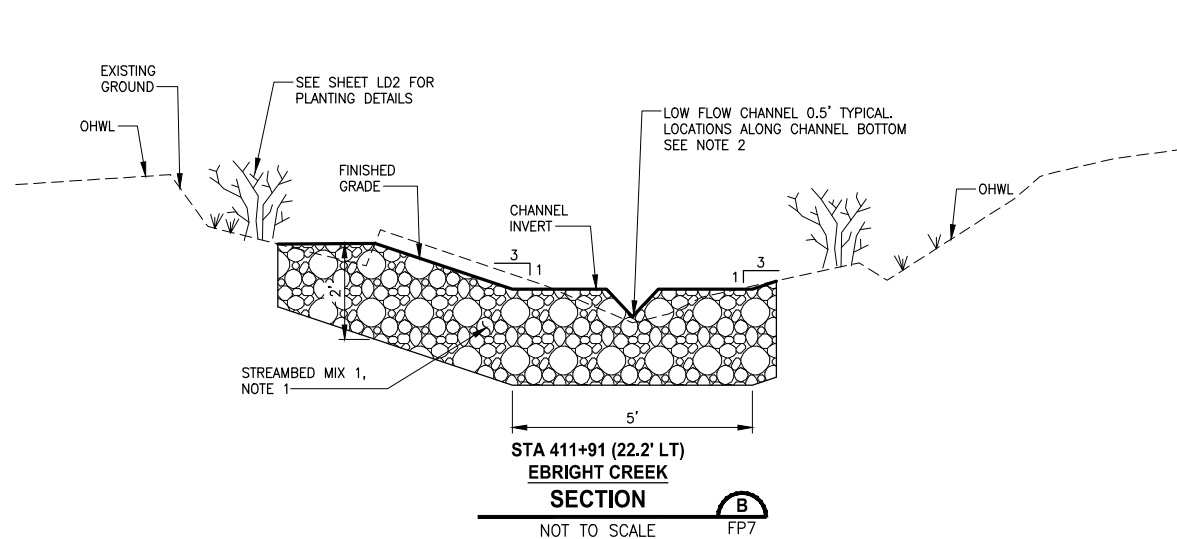
FISH PASSAGE CULVERTS

SHEET NO.
88 OF 213
FP7

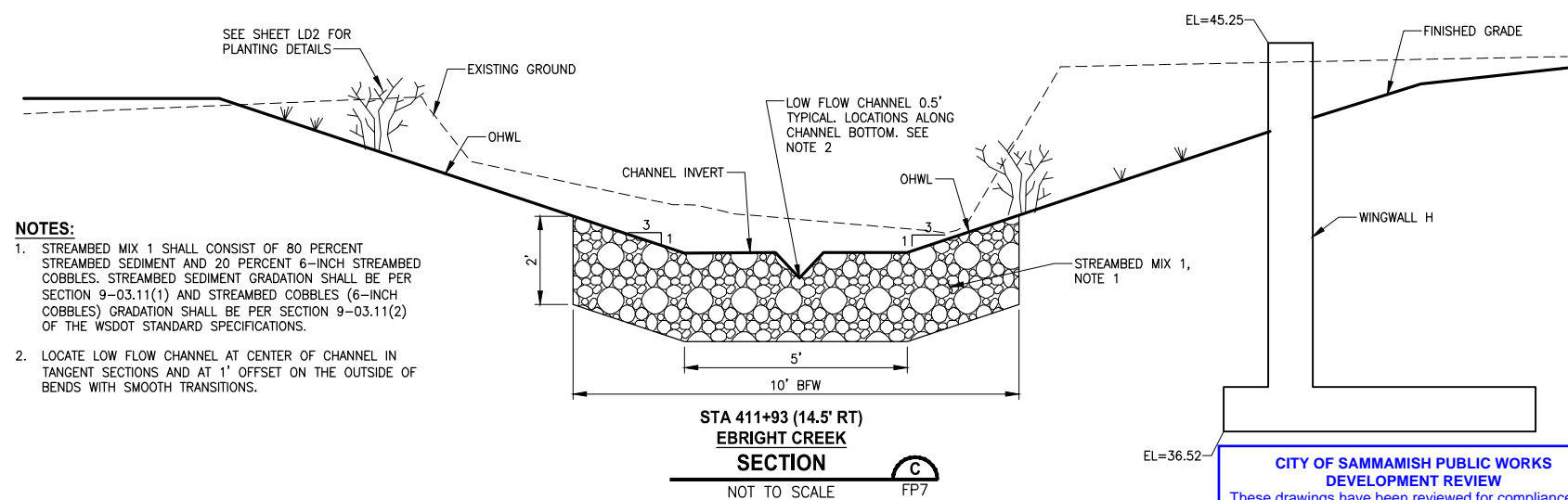
LAYOUT: FB8 PATH: U:\PSO\Projects\Clients\1521-KingCo\554-1521-075-ELST\99Svcs\CADD\Phase 19\T03 Civil\Dwg-Phase2\
PLOTTED BY: purgabut DATE: Monday, June 14, 2021 5:25:55 PM



- GENERAL NOTES:**



- NOTES:**

CITY OF SAMMAMISH PUBLIC WORKS
DEVELOPMENT REVIEW

CONFORMED DRAWINGS



719 2ND AVENUE, SUITE 200 | SEATTLE, WA 98104
P 206.394.3700
WWW.PARAMETRIX.COM

PROJECT NAME

FISH PASSAGE CULVERTS

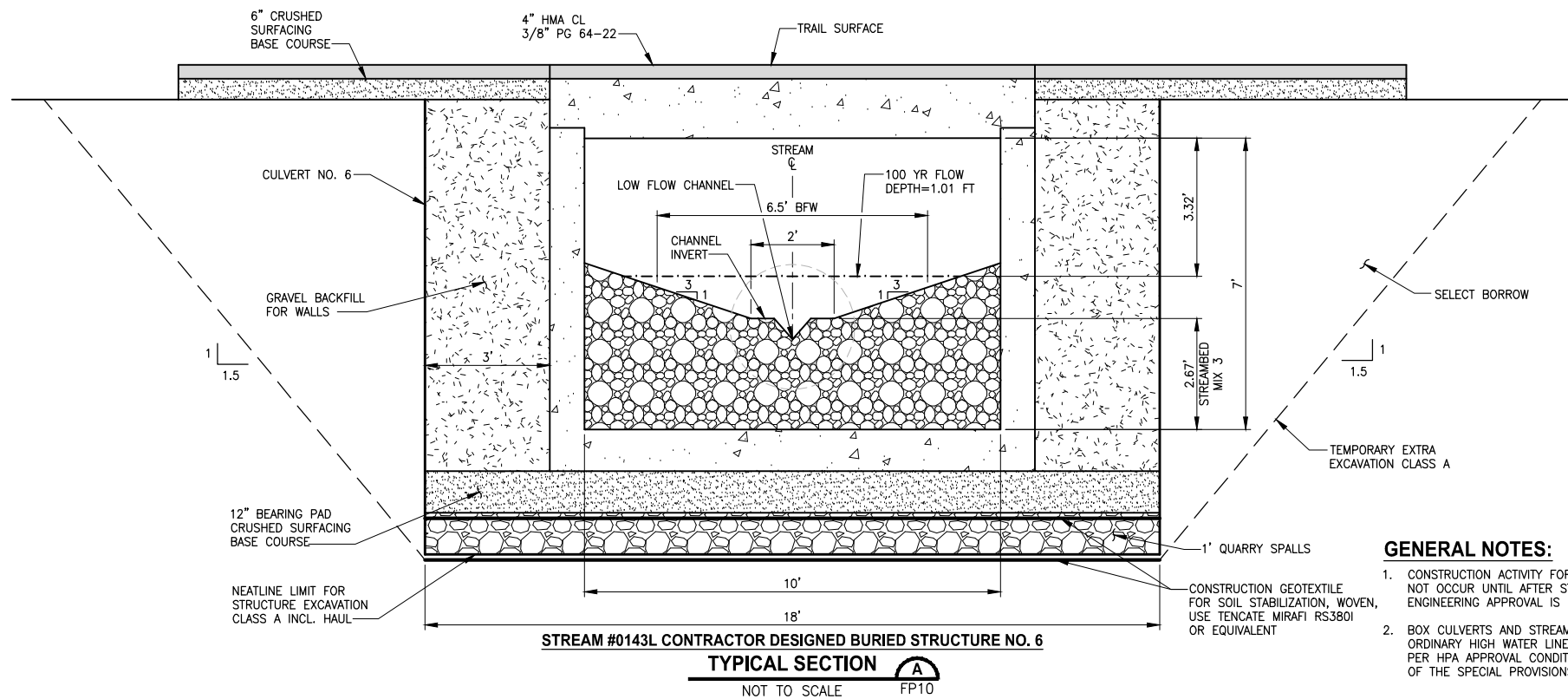
SHEET NO.
89 OF 213

▷	REVISIONS	DATE	BY	DESIGNED X
				DRAWN X
				CHECKED X
				APPROVED H. RAHAY

ONE INCH AT FULL SCALE.
IF NOT, SCALE ACCORDINGLY.

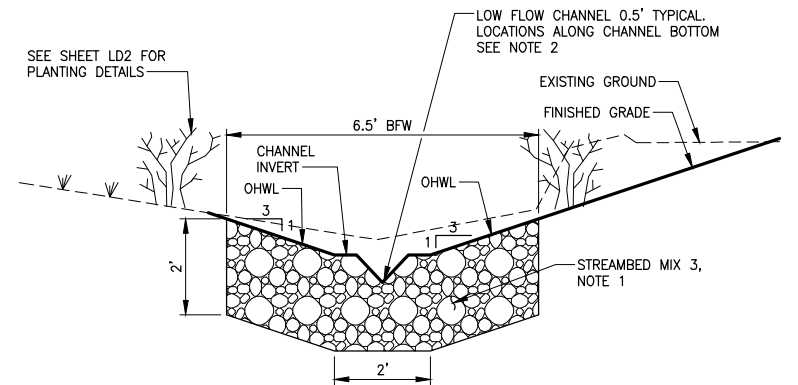
FILE NAME
BL1521075P19T03FP-01
JOB No.
554-1521-075 P19 T03
DATE
JUNE 2021

PATH: U:\PSO\Projects\Clients\1521-KingCo\554-1521-075-ELST\99Sect\CADD\Phase 19\T03 Civil\Draw-Phase2\ LAYOUT: FP11 PLOTTED BY: purgaban DATE: Monday, June 14, 2021 5:27:46 PM

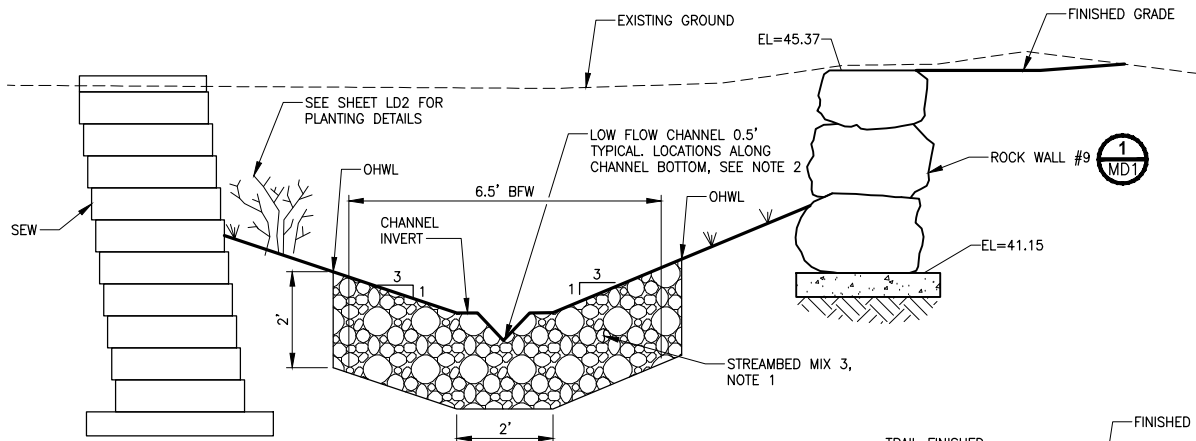


GENERAL NOTES:

- CONSTRUCTION ACTIVITY FOR CULVERTS SHALL NOT OCCUR UNTIL AFTER STRUCTURAL ENGINEERING APPROVAL IS OBTAINED.
- BOX CULVERTS AND STREAM WORK BELOW ORDINARY HIGH WATER LINE SHALL ONLY OCCUR PER HPA APPROVAL CONDITIONS IN APPENDIX A OF THE SPECIAL PROVISIONS.



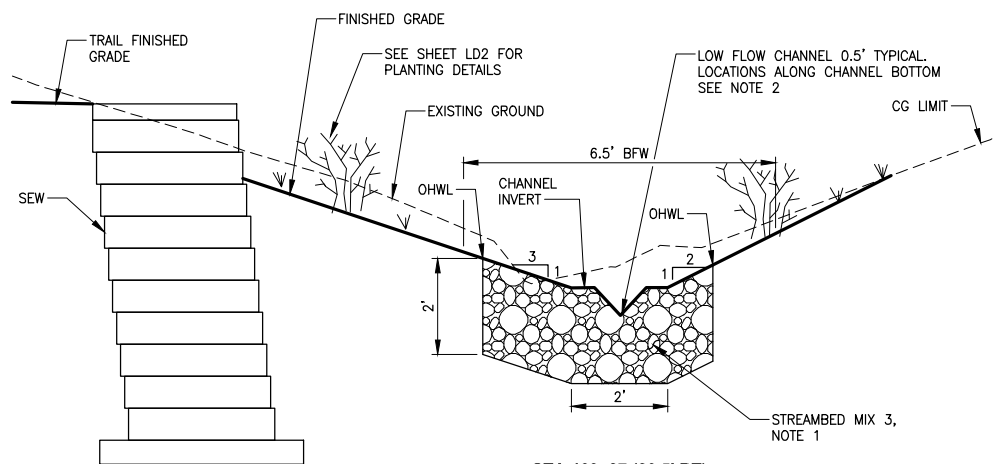
STA 464+28 (12.9' LT)
STREAM #0143L
SECTION B
NOT TO SCALE
FP10



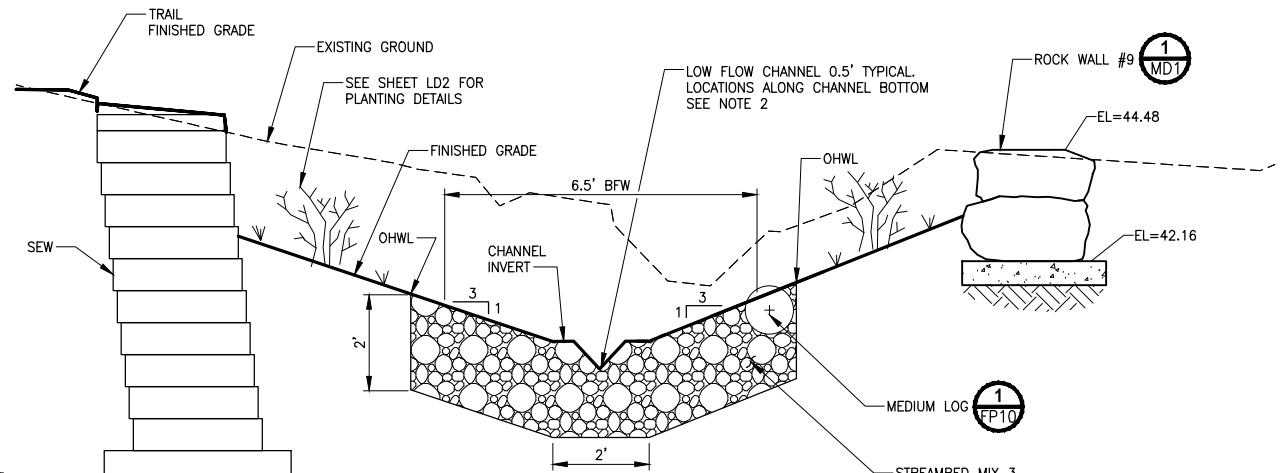
STA 464+27 (11.0' RT)
STREAM #0143L
SECTION C
NOT TO SCALE
FP10

NOTES:

- STREAMBED MIX 3 SHALL CONSIST OF 90 PERCENT STREAMBED SEDIMENT AND 10 PERCENT 6-INCH STREAMBED COBBLES. STREAMBED SEDIMENT GRADATION SHALL BE PER SECTION 9-03.11(1) AND STREAMBED COBBLES (6-INCH COBBLES) GRADATION SHALL BE PER SECTION 9-03.11(2) OF THE WSDOT STANDARD SPECIFICATIONS.
- LOCATE LOW FLOW CHANNEL AT CENTER OF CHANNEL IN TANGENT SECTIONS AND AT 1' OFFSET ON THE OUTSIDE OF BENDS WITH SMOOTH TRANSITIONS.



STA 463+87 (20.5' RT)
STREAM #0143L
SECTION E
NOT TO SCALE
FP10



STA 464+27 (15.7' RT)
STREAM #0143L
SECTION D
NOT TO SCALE
FP10

CITY OF SAMMAMISH PUBLIC WORKS DEVELOPMENT REVIEW

These drawings have been reviewed for compliance with City of Sammamish Clearing and Grading and Stormwater requirements and also in accordance with the requirements as established in the Settlement Agreement between King County vs. City of Sammamish No. C17-0921 JCC and King County vs. City of Sammamish No. 17-2-29922-7 SEA and have been deemed ACCEPTABLE. The reviewer accepts no responsibility for any errors and/or omissions made by the preparer of these drawings.

17 February 2022

CITY OF SAMMAMISH APPROVAL	
City Engineer	Date
Community Development	Date

CONFORMED DRAWINGS



Parametrix
ENGINEERING • PLANNING • ENVIRONMENTAL SCIENCES

719 2ND AVENUE, SUITE 200 | SEATTLE, WA 98104
P 206.394.3700
WWW.PARAMETRIX.COM

PROJECT NAME
**EAST LAKE SAMMAMISH
MASTER PLAN TRAIL
SOUTH SAMMAMISH SEGMENT B - PHASE 2**
SAMMAMISH, WA

FISH PASSAGE CULVERTS

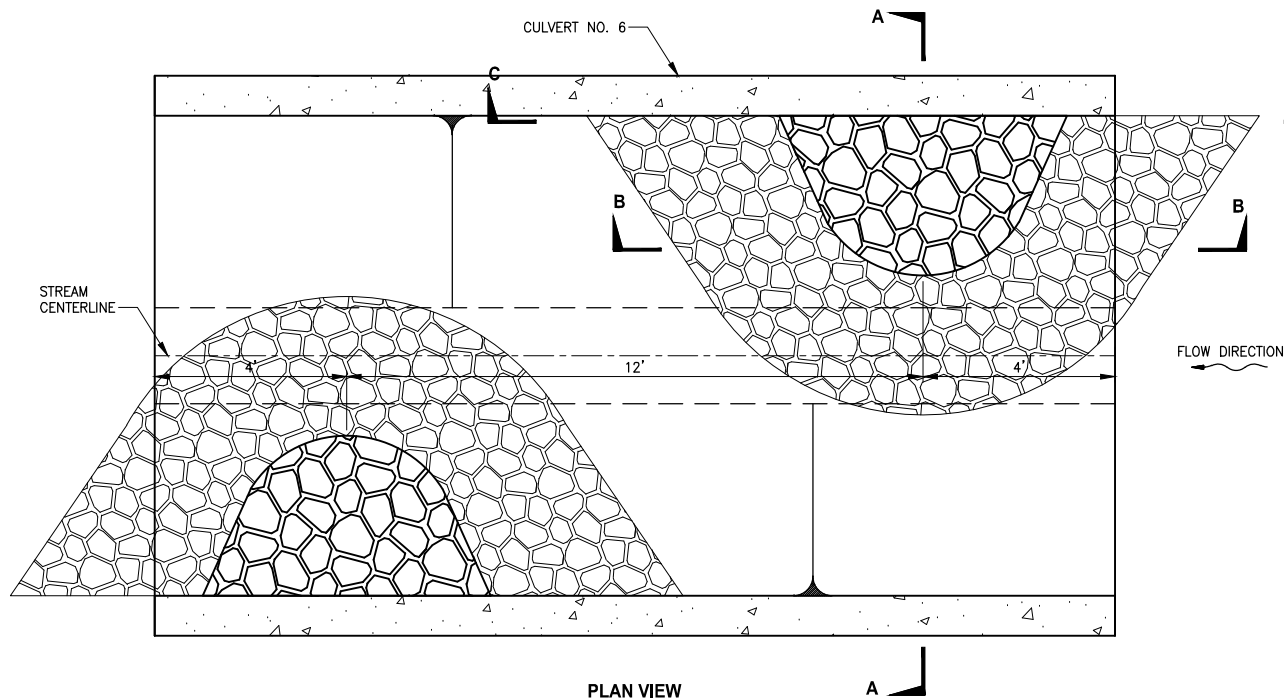
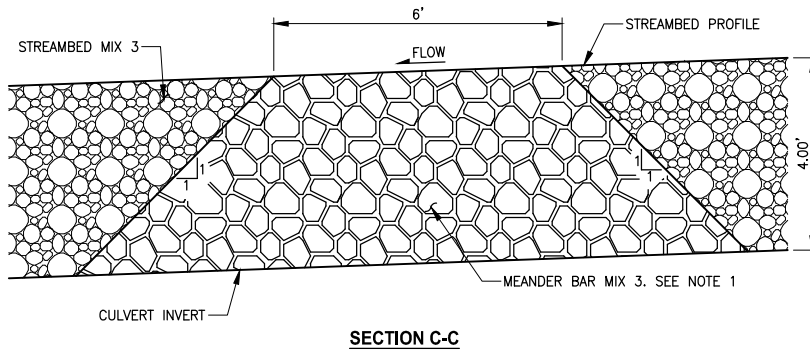
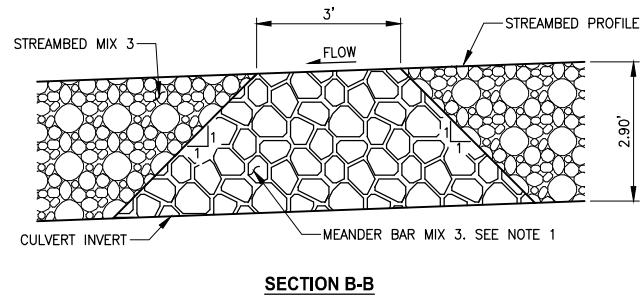
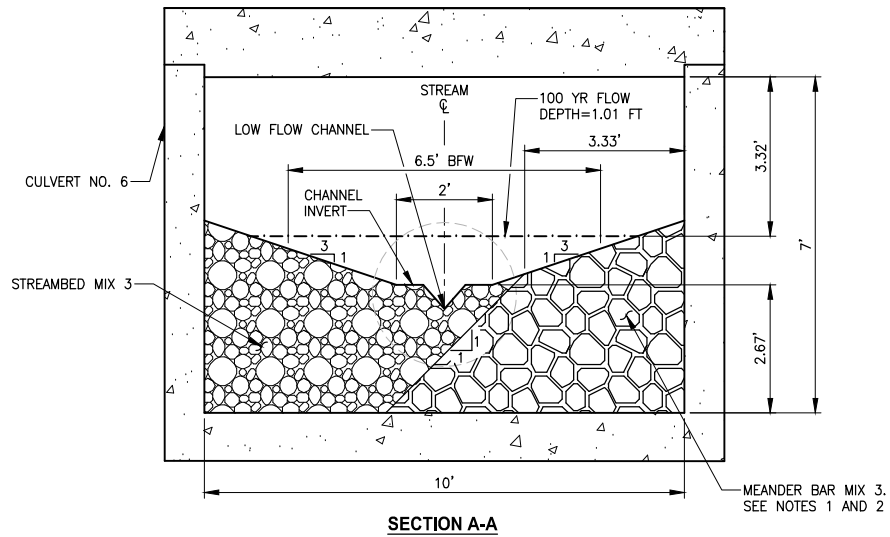
SHEET NO.
92 OF 213

FP11

REVISIONS	DATE	BY	DESIGNED
			C. BUITRAGO
			DRAWN
			B. PURGANAN
			CHECKED
			Y. HO
			APPROVED
			J. BAILEY

ONE INCH AT FULL SCALE. IF NOT, SCALE ACCORDINGLY	
FILE NAME	BL1521075P19T03FP-02
JOB No.	554-1521-075 P19 T03
DATE	JUNE 2021

PATH: U:\PSO\Projects\Clients\1521-KingCo\554-1521-075-ELST\995sec\CADD\Phase 19\T03 Civil\DWG-Phase2\ LAYOUT: FP12 PLOTTED BY: purgbut DATE: Monday, June 14, 2021 5:28:00 PM



NOTES:

- MEANDER BAR MIX 3 SHALL CONSIST OF 50 PERCENT STREAMBED SEDIMENT AND 50 PERCENT 6-INCH COBBLES. STREAMBED SEDIMENT GRADATION SHALL BE PER SECTION 9-03.11(1) AND STREAMBED COBBLES (6-INCH) SHALL BE PER SECTION 9-03.11(2) OF THE WSDOT STANDARD SPECIFICATION.
- CONTRACTOR SHALL INSTALL MEANDER BAR MIX PRIOR TO PLACING STREAMBED MATERIAL MIX.

STREAM #0143L MEANDER BAR PLAN
DETAIL
NOT TO SCALE
FP10

CONFORMED DRAWINGS



ONE INCH AT FULL SCALE.
IF NOT, SCALE ACCORDINGLY
FILE NAME
BL1521075P19T03FP-02
JOB No.
554-1521-075 P19 T03
DATE
JUNE 2021

REVISIONS	DATE	BY	DESIGNED
			C. BUITRAGO
			DRAWN
			B. PURGANAN
			CHECKED
			Y. HO
			APPROVED
			J. BAILEY

Parametrix
ENGINEERING . PLANNING . ENVIRONMENTAL SCIENCES

719 2ND AVENUE, SUITE 200 | SEATTLE, WA 98104
P 206.394.3700
WWW.PARAMETRIX.COM

PROJECT NAME
EAST LAKE SAMMAMISH
MASTER PLAN TRAIL
SOUTH SAMMAMISH SEGMENT B - PHASE 2
SAMMAMISH, WA

FISH PASSAGE CULVERTS

SHEET NO.
93 OF 213
FP12

CITY OF SAMMAMISH PUBLIC WORKS
DEVELOPMENT REVIEW

These drawings have been reviewed for compliance with City of Sammamish Clearing and Grading and Stormwater requirements and also in accordance with the requirements as established in the Settlement Agreement between King County vs. City of Sammamish No. C17-0921 JCC and King County vs. City of Sammamish No. 17-2-29922-7 SEA and have been deemed ACCEPTABLE. The reviewer accepts no responsibility for any errors and/or omissions made by the preparer of these drawings.

17 February 2022

CITY OF SAMMAMISH APPROVAL

City Engineer

Date

Community Development

Date