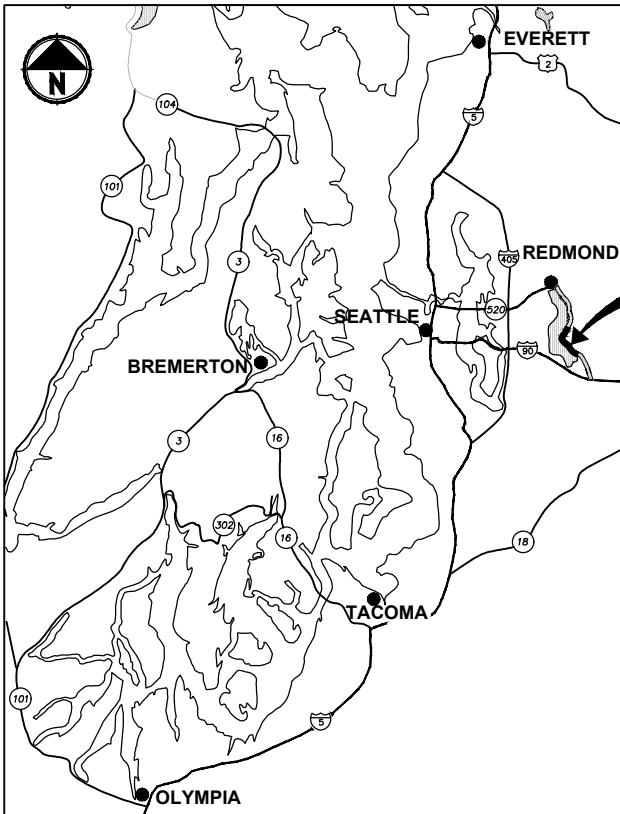


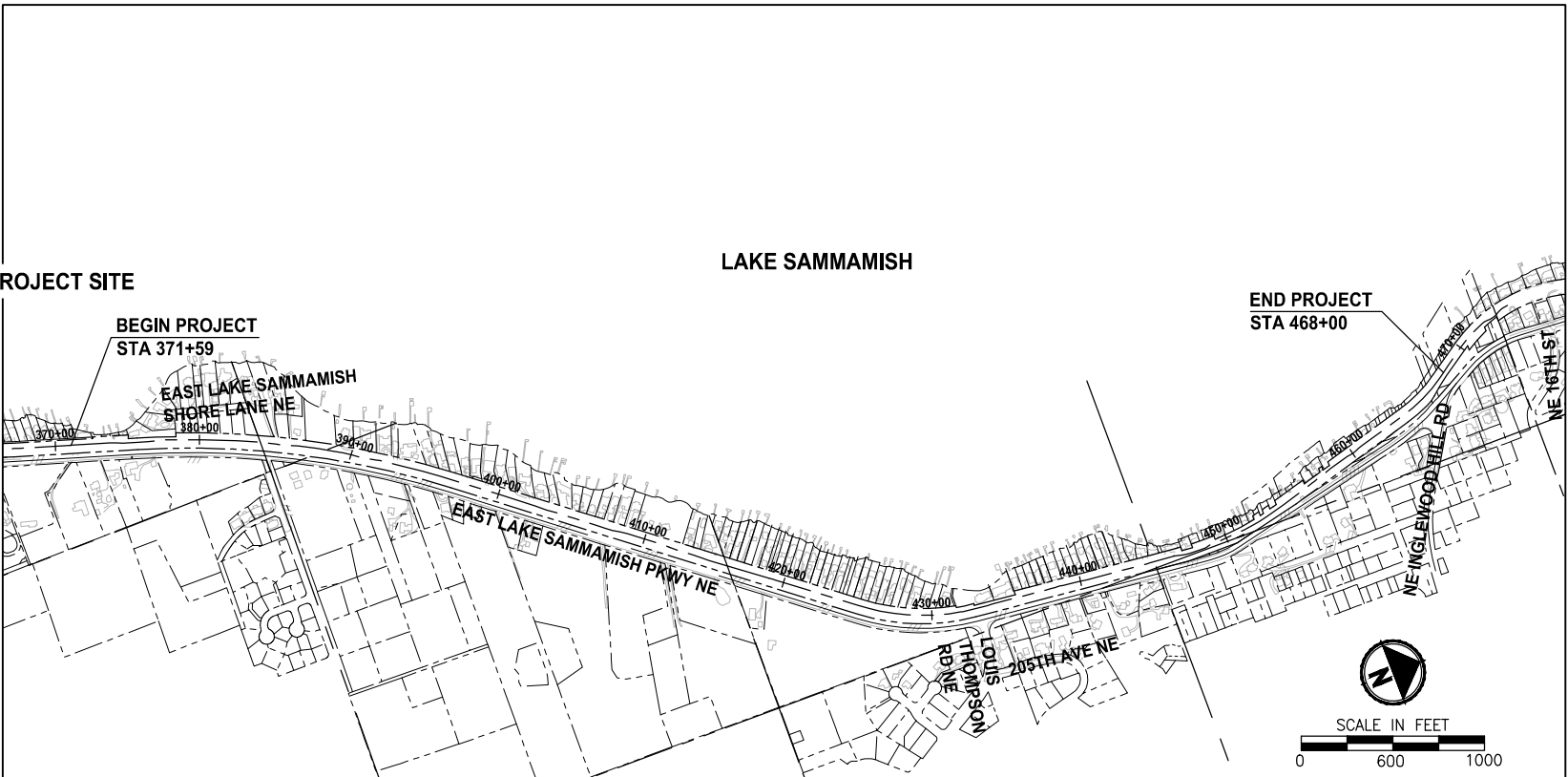
East Lake Sammamish Master Plan Trail, South Sammamish Segment B - Phase 2

Schedule A: Driveway 9 to Inglewood Hill Road

King County, Washington



LOCATION MAP
NOT TO SCALE



VICINITY MAP

RIGHT OF WAY NOTE:

RIGHT OF WAY LINES SHOWN ARE BASED ON KING COUNTY MAP VAULT SURVEY OF EAST LAKE SAMMAMISH TRAIL, MAP NUMBER 311-99, DATED AUGUST 8TH, 1998, WITH SUBSEQUENT CONVEYANCES AND EASEMENTS BEING UPDATED ACCORDING TO AUDITOR DOCUMENTS OF RECORD.

PROPERTY INFORMATION:

PARCEL NUMBERS: 2925069007 (11.13 ACRES)
322506-9015 (13.79 ACRES)
062406-9013 (15.19 ACRES)

PROJECT & SITE INFORMATION:

KING COUNTY PROPOSES TO DEVELOP AN ALTERNATIVE TRANSPORTATION CORRIDOR AND RECREATION TRAIL ALONG 3.5 MILES OF A FORMER RAILROAD CORRIDOR IN THE CITY OF SAMMAMISH, LOCATED BETWEEN SE 33RD ST AND INGLEWOOD HILL ROAD. A GRAVEL INTERIM TRAIL IS CURRENTLY IN OPERATION. SCHEDULE A SEGMENT INCLUDES 1.8 MILES OF THE TRAIL FROM DRIVEWAY 9 TO NE INGLEWOOD HILL ROAD.

DISTURBED AREA = 5.0 AC
EXISTING IMPERVIOUS AREA = 0.5 AC
PROPOSED IMPERVIOUS AREA = 3.1 AC
VOLUME OF ESTIMATED FILL = 3,590 CY
VOLUME OF ESTIMATED EXCAVATION = 4,110 CY

WRITTEN DESCRIPTION OF THE PROJECT:

THE EXISTING GRAVEL TRAIL WILL BE WIDENED TO 12 FEET AND PAVED WITH 2-FOOT GRAVEL SHOULDERS ON BOTH SIDES.

THE PROPOSED IMPROVEMENTS INCLUDE RETAINING WALLS, DRAINAGE IMPROVEMENTS, FENCE, SIGNS AND MITIGATION FOR IMPACTS TO WETLANDS AND WETLAND AND STREAM BUFFERS.

EXISTING ZONE CLASSIFICATION:

COMMUNITY FACILITIES CF-F

EXISTING SHORELINE ENVIRONMENT DESIGNATION:

CITY OF SAMMAMISH DESIGNATION: SHORELINE RESIDENTIAL

GENERAL PURPOSE OF THIS PROJECT:

TO DEVELOP AN ALTERNATIVE TRANSPORTATION CORRIDOR IN A FORMER RAILROAD CORRIDOR.

CONTACT INFORMATION:

APPLICANT/OWNER:
KING COUNTY PARKS AND RECREATION DIVISION
201 S. JACKSON, 7TH FLR
SEATTLE, WA 98104
(206) 724-1296
CONTACT: GINA AULD

ENGINEER:
PARAMETRIX
719 2ND AVENUE
SUITE 200
SEATTLE, WA 98104
(206) 394-3700
CONTACT: YAMMIE HO, P.E.

UTILITY:
ONE-CALL 1 (800) 424-5555

SAMMAMISH PLATEAU WATER AND SEWER DISTRICT
(425) 295-3203
CONTACT: KYLE WONG

COMCAST CABLE
(425) 263-5348/(425) 319-4968
CONTACT: JOSEPH FORDON

FRONTIER COMMUNICATIONS NW INC.
(425) 261-6342/(425) 210-2870
CONTACT: THOMAS PACEY

PUGET SOUND ENERGY (POWER AND POLE)
(425) 417-9188
CONTACT: DENNIS BOOTH

PUGET SOUND ENERGY (GAS)
(425) 449-7410/(425) 463-6550
CONTACT: JEANNE COLEMAN

EASTSIDE FIRE/RESCUE
(425) 313-3203
CONTACT: GREG TRYON

SURVEYOR:
PARAMETRIX
719 2ND AVENUE
SUITE 200
SEATTLE, WA 98104
(206) 394-3700
CONTACT: ROBERT PUSEY

ARBORIST:
AMERICAN FOREST MANAGEMENT, INC
11415 NE 128TH ST SUITE 110
KIRKLAND, WA 98034
(425) 820-3420
CONTACT: BOB LAYTON

**CITY OF SAMMAMISH PUBLIC WORKS
DEVELOPMENT REVIEW**

These drawings have been reviewed for compliance with City of Sammamish Clearing and Grading and Stormwater requirements and also in accordance with the requirements as established in the Settlement Agreement between King County vs. City of Sammamish No. C17-0921 JCC and King County vs. City of Sammamish No. 17-2-29922-7 SEA and have been deemed ACCEPTABLE. The reviewer accepts no responsibility for any errors and/or omissions made by the preparer of these drawings.

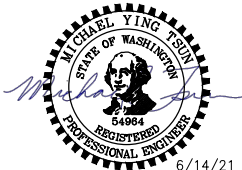
17 February 2022

CG2016-03470
SSDP2016-00415

CITY OF SAMMAMISH APPROVAL

City Engineer	Date
Community Development	Date

CONFORMED DRAWINGS



Parametrix
ENGINEERING · PLANNING · ENVIRONMENTAL SCIENCES

719 2ND AVENUE, SUITE 200 | SEATTLE, WA 98104
P 206.394.3700
WWW.PARAMETRIX.COM

PROJECT NAME
**EAST LAKE SAMMAMISH
MASTER PLAN TRAIL
SOUTH SAMMAMISH SEGMENT B - PHASE 2**
SAMMAMISH, WA

COVER SHEET

SHEET NO.
2 OF 213

G1

PATH: U:\PSO\Projects\Clients\1521-KingCo\554-1521-075-ELST\995\cs\CADD\Phase 19\T03_Civil\DWG-Phase2\
 PLOTTED BY: purgabut DATE: Monday, June 14, 2021 3:57:19 PM
 LAYOUT: G2

ABBREVIATIONS:

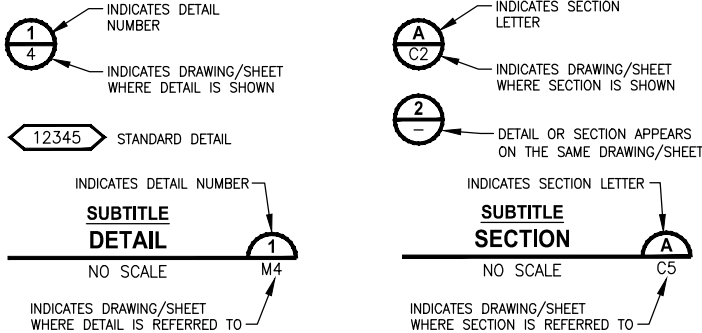
AC	ASBESTOS CEMENT PIPE	MIN	MINIMUM
ACP	ASPHALT CONCRETE PAVEMENT	MON	MONUMENT
ADS	ADVANCED DRAINAGE SYSTEMS	MPE	MEDIUM DENSITY POLYETHYLENE PIPE
APPROX	APPROXIMATE	N	NORTH, NORTHING
BOC	BACK OF CURB	N.I.C.	NOT IN CONTRACT
BTM	BOTTOM	NST	NOT IN STEEPER THAN
BOW	BOTTOM OF WALL	PC	POINT OF CURVE
BVCE	BEGIN VERTICAL CURVE ELEVATION	PE, PEP	POLYETHYLENE PIPE
BVCS	BEGIN VERTICAL CURVE STATION	PT	POINT OF TANGENT
CB	CATCH BASIN	P/L	PROPERTY LINE
C&G	CURB AND GUTTER	PRO	PROPOSED
C/L, CL	CENTERLINE	PUD	PUBLIC UTILITY DISTRICT
CO	CLEANOUT	PVC	POLYVINYL CHLORIDE PIPE
COM	COMMUNICATION	PVI	POINT OF VERTICAL INTERSECTION
CONC	CONCRETE	PWR	POWER
CORR	CORRUGATED	RCP	REINFORCED CONCRETE PIPE
COS	CITY OF SAMMAMISH	REINF	REINFORCED
CONST	CONSTRUCTION	ROW, R/W	RIGHT-OF-WAY
CMP	CORRUGATED METAL PIPE	RT	RIGHT
CP	CONCRETE PIPE	SD	STORM DRAIN
CSTC	CRUSHED SURFACING TOP COURSE	SDMH	STORMWATER MANHOLE
DIA	DIAMETER	SIM	SIMILAR
DI, DIP	DUCTILE IRON PIPE	SEW	STRUCTURAL EARTH RETAINING WALL
E	EAST, EASTING	SPECS	SPECIFICATIONS
EL	ELEVATION	SPWSD	SAMMAMISH PLATEAU WATER & SEWER DISTRICT
EOA	EDGE OF ASPHALT	SS	SANITARY SEWER
EVCE	END VERTICAL CURB ELEVATION	SSFM	SANITARY SEWER FORCE MAIN
EVCS	END VERTICAL CURB STATION	ST	STEEL
EOG	EDGE OF GRAVEL	STA	STATION
EOP	EDGE OF PAVEMENT	STD	STANDARD
EX, EXIST	EXISTING	TEL	TELEPHONE
FOC	FACE OF CURB	TESC	TEMPORARY EROSION AND SEDIMENT CONTROL
FL	FLANGE, FLOWLINE	TOW	TOP OF WALL
G	GAS	UD	UNDERDRAIN
GB	GRADE BREAK	TYP	TYPICAL
GT	GRAVEL TRENCH	W, WTR	WATER
HDPE	HIGH DENSITY POLYETHYLENE PIPE	WS	WATER SERVICE
HMA	HOT MIX ASPHALT	WSDOT	WASHINGTON STATE DEPARTMENT OF TRANSPORTATION
IE	INVERT ELEVATION	WWM	WELDED WIRE MESH
LF	LINEAR FEET		
LP	LOW POINT		
LT	LEFT		
ME	MATCH EXISTING		

INDEX TO DRAWINGS		
DWG NO.	SHT NO.	SHEET TITLE
GENERAL		
1	G0	SCHEDULE COVER SHEET
2	G1	COVER SHEET
3	G2	ABBREVIATIONS AND SHEET LIST
4	G3	SHEET INDEX
5	G4	LEGEND
6	G5	SURVEY CONTROL PLAN
7	G6	SURVEY CONTROL PLAN
8	G7	SURVEY CONTROL SCHEDULE
EXISTING CONDITIONS		
9	EX1	EXISTING CONDITIONS PLAN
10	EX2	EXISTING CONDITIONS PLAN
11	EX3	EXISTING CONDITIONS PLAN
12	EX4	EXISTING CONDITIONS PLAN
13	EX5	EXISTING CONDITIONS PLAN
14	EX6	EXISTING CONDITIONS PLAN
15	EX7	EXISTING CONDITIONS PLAN
16	EX8	EXISTING CONDITIONS PLAN
17	EX9	EXISTING CONDITIONS PLAN
18	EX10	EXISTING CONDITIONS PLAN
TYPICAL CROSS SECTIONS		
19	CS1	TYPICAL CROSS SECTIONS
20	CS2	TYPICAL CROSS SECTIONS
SITE PREPARATION		
21	SP1	SITE PREPARATION PLAN
22	SP2	SITE PREPARATION PLAN
23	SP3	SITE PREPARATION PLAN
24	SP4	SITE PREPARATION PLAN
25	SP5	SITE PREPARATION PLAN
26	SP6	SITE PREPARATION PLAN
27	SP7	SITE PREPARATION PLAN
28	SP8	SITE PREPARATION PLAN
29	SP9	SITE PREPARATION PLAN
30	SP10	SITE PREPARATION PLAN
TESC		
31	TE1	TESC PLAN
32	TE2	TESC PLAN
33	TE3	TESC PLAN
34	TE4	TESC PLAN
35	TE5	TESC PLAN
36	TE6	TESC PLAN
37	TE7	TESC PLAN
38	TE8	TESC PLAN
39	TE9	TESC PLAN
40	TE10	TESC PLAN
TESC DETAILS		
41	TD1	TESC DETAILS
TRAIL PLAN & PROFILE		
42	AL1	PLAN AND PROFILE
43	AL2	PLAN AND PROFILE
44	AL3	PLAN AND PROFILE
45	AL4	PLAN AND PROFILE
46	AL5	PLAN AND PROFILE
47	AL6	PLAN AND PROFILE
48	AL7	PLAN AND PROFILE
49	AL8	PLAN AND PROFILE
50	AL9	PLAN AND PROFILE
51	AL10	PLAN AND PROFILE
52	AL11	PLAN AND PROFILE
53	AL12	PLAN AND PROFILE
54	AL13	PLAN AND PROFILE
55	AL14	PLAN AND PROFILE
56	AL15	PLAN AND PROFILE
57	AL16	PLAN AND PROFILE
58	AL17	PLAN AND PROFILE
59	AL18	PLAN AND PROFILE
60	AL19	PLAN AND PROFILE
61	AL20	PLAN AND PROFILE
62	AL21	PLAN AND PROFILE

INDEX TO DRAWINGS (CONTINUED)		
DWG NO.	SHT NO.	SHEET TITLE
UTILITY AND DRAINAGE		
63	UT1	UTILITY AND DRAINAGE PLAN
64	UT2	UTILITY AND DRAINAGE PLAN
65	UT3	UTILITY AND DRAINAGE PLAN
66	UT4	UTILITY AND DRAINAGE PLAN
67	UT5	UTILITY AND DRAINAGE PLAN
68	UT6	UTILITY AND DRAINAGE PLAN
69	UT7	UTILITY AND DRAINAGE PLAN
70	UT8	UTILITY AND DRAINAGE PLAN
71	UT9	UTILITY AND DRAINAGE PLAN
72	UT10	UTILITY AND DRAINAGE PLAN
73	UT11	UTILITY AND DRAINAGE PLAN
74	UD1	UTILITY DETAILS
75	UD2	UTILITY DETAILS
STORM DRAIN PROFILES		
76	SD1	STORM DRAIN PROFILES AND SECTIONS
77	SD2	STORM DRAIN PROFILES AND SECTIONS
78	SD3	STORM DRAIN PROFILES AND SECTIONS
79	SD4	STORM DRAIN PROFILES AND SECTIONS
DRAINAGE DETAILS		
80	DD1	DRAINAGE DETAILS
81	DD2	DRAINAGE DETAILS
FISH PASSAGE CULVERTS		
82	FP1	FISH PASSAGE CULVERTS – PINE LAKE CREEK
83	FP2	FISH PASSAGE CULVERTS – PINE LAKE CREEK
84	FP3	FISH PASSAGE CULVERTS – PINE LAKE CREEK
85	FP4	FISH PASSAGE CULVERTS – STREAM 0155
86	FP5	FISH PASSAGE CULVERTS – STREAM 0155
87	FP6	FISH PASSAGE CULVERTS – STREAM 0155
88	FP7	FISH PASSAGE CULVERTS – EBRIGHT CREEK
89	FP8	FISH PASSAGE CULVERTS – EBRIGHT CREEK
90	FP9	FISH PASSAGE CULVERTS – EBRIGHT CREEK
91	FP10	FISH PASSAGE CULVERTS – STREAM 0143L
92	FP11	FISH PASSAGE CULVERTS – STREAM 0143L
93	FP12	FISH PASSAGE CULVERTS – STREAM 0143L
DRIVEWAY PLAN AND PROFILE		
94	DP1	DRIVEWAY PLAN AND PROFILE
95	DP2	DRIVEWAY PLAN AND PROFILE
96	DP3	DRIVEWAY PLAN AND PROFILE
97	DP4	DRIVEWAY PLAN AND PROFILE
98	DP5	DRIVEWAY PLAN AND PROFILE
99	DP6	DRIVEWAY PLAN AND PROFILE
100	DP7	DRIVEWAY PLAN AND PROFILE
101	DP8	DRIVEWAY PLAN AND PROFILE
102	DP9	DRIVEWAY PLAN AND PROFILE
103	DP10	DRIVEWAY PLAN AND PROFILE
104	DP11	DRIVEWAY PLAN AND PROFILE
105	DP12	DRIVEWAY PLAN AND PROFILE
106	DP13	DRIVEWAY PLAN AND PROFILE
107	DP14	DRIVEWAY PLAN AND PROFILE
108	DP15	DRIVEWAY PLAN AND PROFILE
109	DP16	DRIVEWAY PLAN AND PROFILE
WALL PROFILES		
110	WP1	WALL PROFILES
111	WP2	WALL PROFILES
112	WP3	WALL PROFILES
113	WP4	WALL PROFILES
114	WP5	WALL PROFILES
WALL DETAILS		
115	WD1	WALL DETAILS
116	WD2	WALL DETAILS
117	WD3	WALL SCHEDULE
STRUCTURE		
118	S1	CIP CONCRETE STAIR DETAILS
119	S2	CIP CONCRETE STAIR DETAILS
120	S3	CIP CONCRETE STAIR DETAILS

INDEX TO DRAWINGS (CONTINUED)		
DWG NO.	SHT NO.	SHEET TITLE
PAVEMENT MARKING & SIGNING		
121	PS1	PAVEMENT MARKING AND SIGNING PLAN
122	PS2	PAVEMENT MARKING AND SIGNING PLAN
123	PS3	PAVEMENT MARKING AND SIGNING PLAN
124	PS4	PAVEMENT MARKING AND SIGNING PLAN
125	PS5	PAVEMENT MARKING AND SIGNING PLAN
126	PS6	PAVEMENT MARKING AND SIGNING PLAN
127	PS7	PAVEMENT MARKING AND SIGNING PLAN
128	PS8	PAVEMENT MARKING AND SIGNING PLAN
129	PS9	PAVEMENT MARKING AND SIGNING PLAN
130	PS10	PAVEMENT MARKING AND SIGNING PLAN
131	PS11	SIGN SCHEDULE
MISCELLANEOUS DETAILS		
132	MD1	MISCELLANEOUS DETAILS
133	MD2	MISCELLANEOUS DETAILS
134	MD3	MISCELLANEOUS DETAILS
135	MD4	MISCELLANEOUS DETAILS
136	MD5	MISCELLANEOUS DETAILS
137	MD6	MISCELLANEOUS DETAILS
138	MD7	MISCELLANEOUS DETAILS
139	MD8	MISCELLANEOUS DETAILS
140	MD9	MISCELLANEOUS DETAILS
LANDSCAPE		
141	LA1	LANDSCAPE PLAN
142	LA2	LANDSCAPE PLAN
143	LA3	LANDSCAPE PLAN
144	LA4	LANDSCAPE PLAN
145	LA5	LANDSCAPE PLAN
146	LA6	LANDSCAPE PLAN
147	LA7	LANDSCAPE PLAN
148	LA8	LANDSCAPE PLAN
149	LA9	LANDSCAPE PLAN
150	LA10	LANDSCAPE PLAN
151	LA11	LANDSCAPE PLAN
152	LA12	LANDSCAPE PLAN
MITIGATION DETAILS AND NOTES		
153	LD1	PLANTING DETAILS
154	LD2	PLANTING DETAILS
155	LD3	PLANTING SCHEDULE
156	LD4	MITIGATION NOTES
157	LD5	MITIGATION NOTES
158	LD6	MITIGATION NOTES

DETAIL AND SECTION DESIGNATION



CITY OF SAMMAMISH PUBLIC WORKS
DEVELOPMENT REVIEW

These drawings have been reviewed for compliance with City of Sammamish Clearing and Grading and Stormwater requirements and also in accordance with the requirements as established in the Settlement Agreement between King County vs. City of Sammamish No. C17-0921 JCC and King County vs. City of Sammamish No. 17-2-29922-7 SEA and have been deemed ACCEPTABLE. The reviewer accepts no responsibility for any errors and/or omissions made by the preparer of these drawings.
17 February 2022

CITY OF SAMMAMISH APPROVAL	
City Engineer	Date
Community Development	Date

CONFORMED DRAWINGS



ONE INCH AT FULL SCALE. IF NOT, SCALE ACCORDINGLY	
FILE NAME	BL1521075P19T03G-02
JOB No.	554-1521-075 P19 T03
DATE	JUNE 2021

REVISIONS	DATE	BY	DESIGNED
			M. TSUN
			B. PURGANAN
			Y. HO
			J. BAILEY

Parametrix

ENGINEERING · PLANNING · ENVIRONMENTAL SCIENCES

719 2ND AVENUE, SUITE 200 | SEATTLE, WA 98104

P 206.394.3700

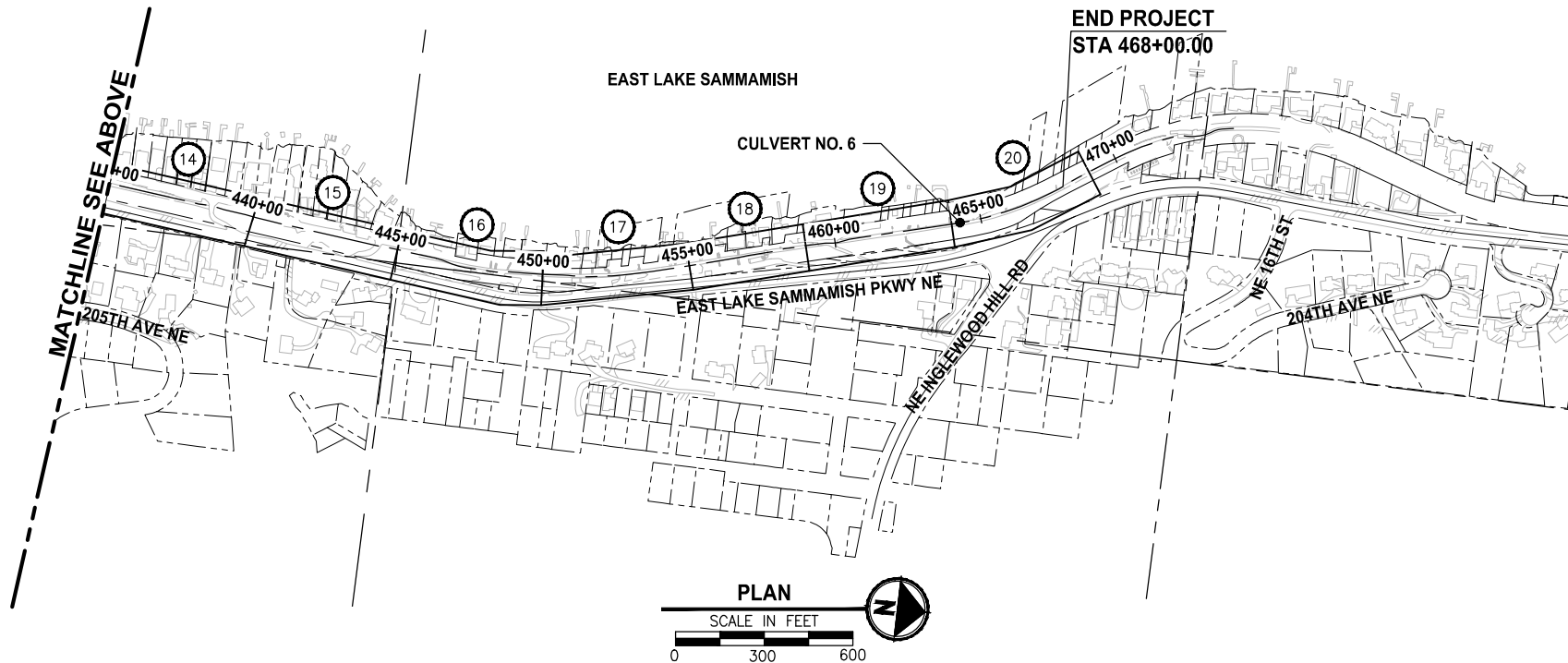
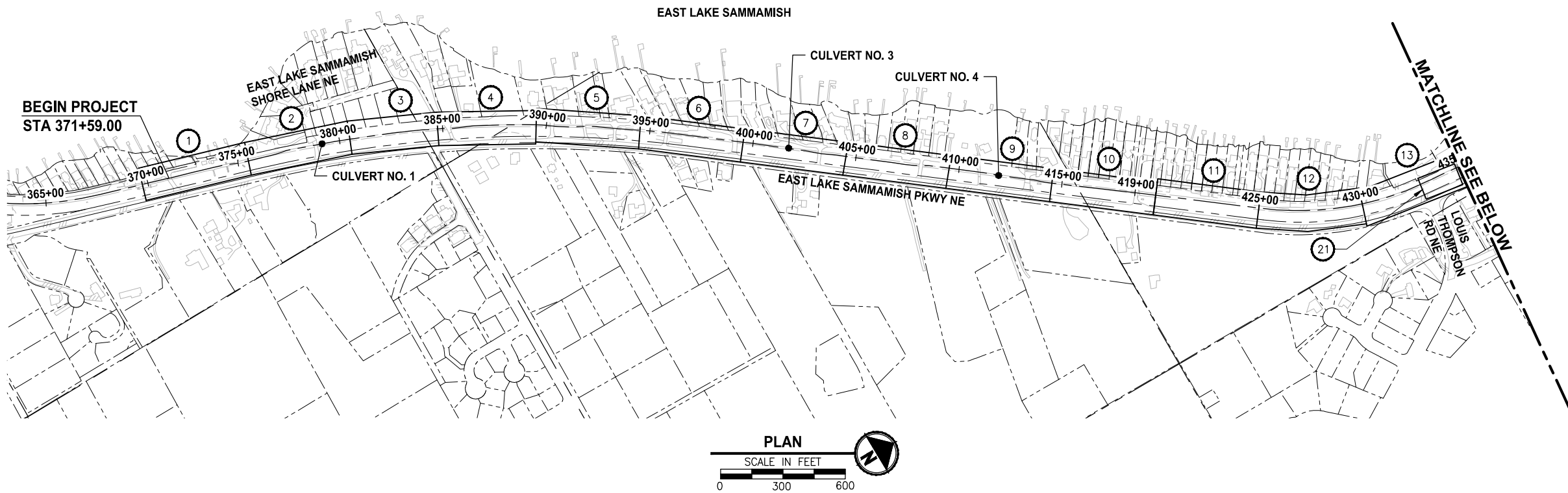
WWW.PARAMETRIX.COM

PROJECT NAME
EAST LAKE SAMMAMISH MASTER PLAN TRAIL SOUTH SAMMAMISH SEGMENT B - PHASE 2 SAMMAMISH, WA

ABBREVIATIONS AND SHEET LIST

SHEET NO. 3 OF 213
G2

U:\PSO\Projects\Clients\1521-KingCo\554-1521-075-ELST\995\cadd\Phase 19 T03 Civil\Draw-Phase2\ LAYOUT: G3 PLOTTED BY: purgubut DATE: Monday, June 14, 2021 3:57:33 PM



CONFORMED DRAWINGS



Parametrix
ENGINEERING · PLANNING · ENVIRONMENTAL SCIENCES

719 2ND AVENUE, SUITE 200 | SEATTLE, WA 98104
P 206.394.3700
WWW.PARAMETRIX.COM

PROJECT NAME

**EAST LAKE SAMMAMISH
MASTER PLAN TRAIL
SOUTH SAMMAMISH SEGMENT B - PHASE 2**

SAMMAMISH, WA

**CITY OF SAMMAMISH PUBLIC WORKS
DEVELOPMENT REVIEW**

These drawings have been reviewed for compliance with City of Sammamish Clearing and Grading and Stormwater requirements and also in accordance with the requirements as established in the Settlement Agreement between King County vs. City of Sammamish No. C17-0921 JCC and King County vs. City of Sammamish No. 17-2-29922-7 SEA and have been deemed **ACCEPTABLE**. The reviewer accepts no responsibility for any errors and/or omissions made by the preparer of these drawings.

17 February 2022

CITY OF SAMMAMISH APPROVAL	
City Engineer	Date
Community Development	Date

SHEET INDEX TABLE

(X)	EXISTING CONDITIONS PLAN	SITE PREPARATION PLAN	PLAN AND PROFILE	UTILITY AND DRAINAGE PLAN
1	EX1	SP1	AL1	UT1
2	EX1	SP1	AL2	UT1
3	EX2	SP2	AL3	UT2
4	EX2	SP2	AL4	UT2
5	EX3	SP3	AL5	UT3
6	EX3	SP3	AL6	UT3
7	EX4	SP4	AL7	UT4
8	EX4	SP4	AL8	UT4
9	EX5	SP5	AL9	UT5
10	EX5	SP5	AL10	UT5
11	EX6	SP6	AL11	UT6
12	EX6	SP6	AL12	UT6
13	EX7	SP7	AL13	UT7
14	EX7	SP7	AL14	UT8
15	EX8	SP8	AL15	UT8
16	EX8	SP8	AL16	UT9
17	EX9	SP9	AL17	UT9
18	EX9	SP9	AL18	UT10
19	EX10	SP10	AL19	UT10
20	EX10	SP10	AL20	UT11
21	-	-	AL21	-

REVISIONS	DATE	BY	DESIGNED
			M. TSUN
			DRAWN
			B. PURGANAN
			CHECKED
			Y. HO
			APPROVED
			J. BAILEY

ONE INCH AT FULL SCALE.
IF NOT, SCALE ACCORDINGLY

FILE NAME
BL1521075P19T03G-03

JOB No.
554-1521-075 P19 T03

DATE
JUNE 2021

SHEET INDEX

SHEET NO.
4 OF 213

G3

PATH: U:\PSO\Projects\Clients\1521-KingCo\554-1521-075-ELST\995\cs\CADD\Phase 19\T03 Civil\Draw-Phase2\ PLOTTED BY: purgubut DATE: Monday, June 14, 2021 3:57:43 PM LAYOUT: G4

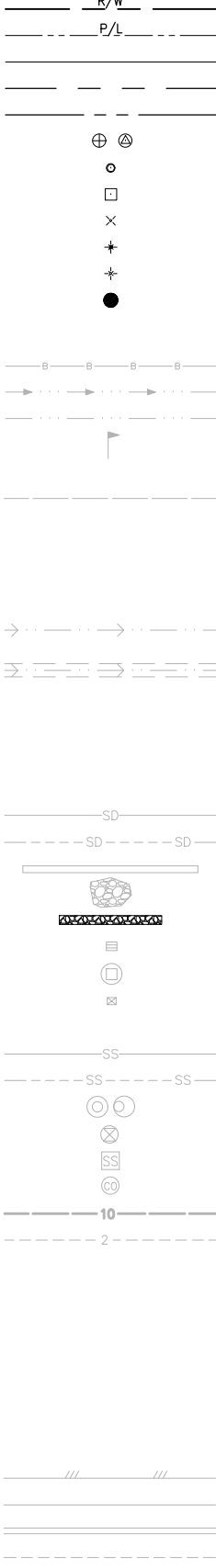
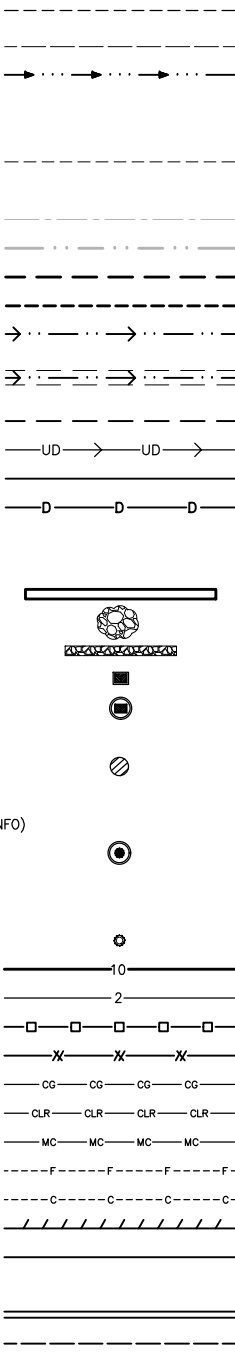
LEGEND

DESCRIPTION

PROPOSED

EXISTING

RIGHT OF WAY
PROPERTY LINE
RR LEASE LINE
SECTION LINE
QUARTER SECTION LINE
FOUND MONUMENTS
REBAR & CAP
HUB & TACK
PK NAIL
FOUND MAG NAIL
SET MAG NAIL
PROPERTY CORNER
EASEMENT LINE/
DRAINAGE CONVEYANCE AREA
STREAM BUFFER
STREAM
EDGE OF WATER
WETLAND FLAG
WETLAND BUFFER
ORDINARY HIGH WATER MARK
FLOODWAY BOUNDARY
SHORELINE
50' SHORELINE SETBACK
200' SHORELINE SETBACK
DITCH
JURISDICTIONAL DITCH
CENTERLINE & EDGES
TEMPORARY EXCAVATION LIMIT
UNDERDRAIN TRENCH
SOLID WALL PVC
TEMPORARY DRAIN PIPE
STORM DRAIN
STORM DRAIN (PER RECORD INFO)
CULVERT/STORM DRAIN PIPE
QUARRY SPALL/RIP RAP
INFILTRATION TRENCH
CATCH BASIN, TYPE 1
CATCH BASIN, TYPE 2
CATCH BASIN W/ SOLID LID
INLET PROTECTION
SANITARY SEWER LINE
SANITARY SEWER LINE (PER RECORD INFO)
SANITARY SEWER MANHOLE
SANITARY SEWER VALVE
SANITARY SEWER VAULT
CLEANOUT
CONTOURS MAJOR
CONTOURS MINOR
HIGH VISIBILITY SILT FENCE
HIGH VISIBILITY FENCE
CLEARING AND GRUBBING LIMITS
CLEARING LIMITS
MITIGATION CLEARING
FILL LINE
CUT LINE
SAWCUT
ASPHALT EDGE
CONCRETE LINE
CURB AND GUTTER
EDGE OF GRAVEL



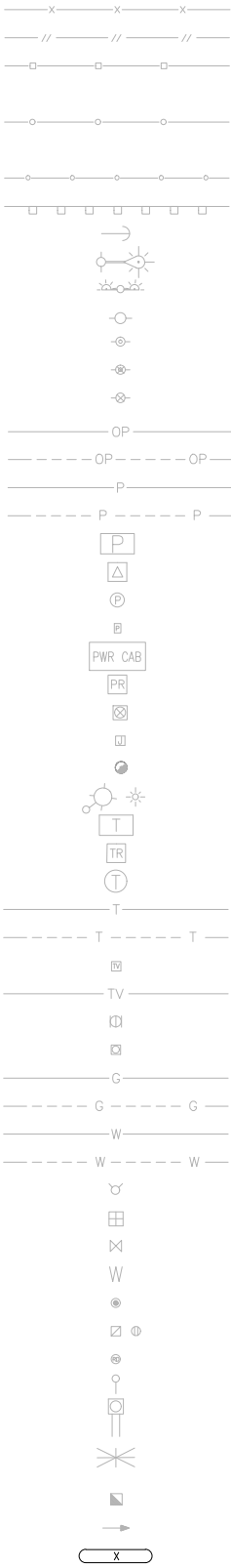
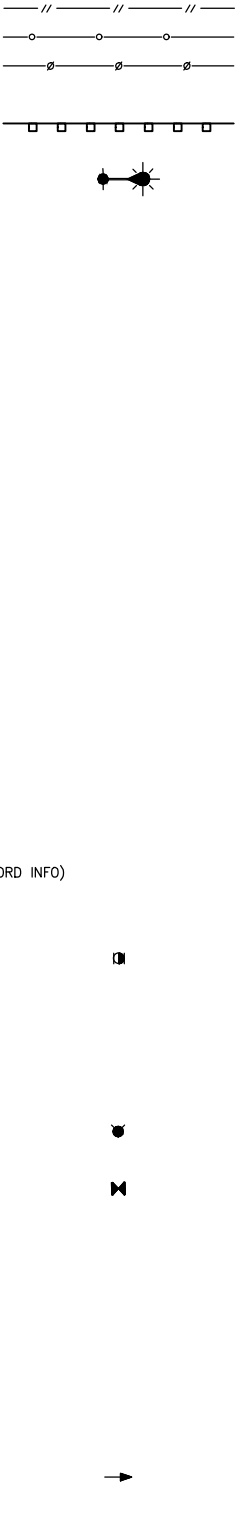
LEGEND

DESCRIPTION

PROPOSED

EXISTING

BARBWIRE FENCE
SPLIT RAIL FENCE
BOARD FENCE
TWO-RAIL FENCE
CHAIN LINK FENCE
TEMPORARY SAFETY FENCE
HOG WIRE FENCE
WOOD GUARDRAIL
GUY ANCHOR
POWER POLE WITH LIGHT
FLOOD LIGHT
UTILITY POLE
PP W/ UG DROP
PP W/ UG DROP & XMFR
PP W/ XMFR
OVERHEAD POWER AND/OR TELECOM
OVERHEAD POWER (PER RECORD INFO)
POWER
POWER (PER RECORD INFO)
POWER VAULT
POWER TRANSFORMER
POWER MANHOLE
POWER HANDHOLE
POWER CABINET
POWER RISER
POWER METER
SOLID LID J-BOX
STAND PIPE / HOSE BIB
LUMINAIRE
TELEPHONE VAULT
TELEPHONE RISER
TELEPHONE MANHOLE
TELEPHONE/COMMUNICATION
TELEPHONE/COMMUNICATION (PER RECORD INFO)
TV RISER
TV
GAS VALVE
GAS METER
GAS
GAS (PER RECORD INFO)
WATER LINE
WATER LINE (PER RECORD INFO)
FIRE HYDRANT
WATER METER
WATER VALVE
WATER VAULT
MONITORING WELL OR ARTESIAN WELL
AREA DRAIN
ROOF DRAIN
WATER BLOW OFF VALVE
WATER POST INDICATOR
SPRINKLER HEAD ROT=90
IRRIGATION CONTROL VALVE
FLOW DIRECTION
PROPERTY PARCEL NUMBER



CONFORMED DRAWINGS



ONE INCH AT FULL SCALE.
IF NOT, SCALE ACCORDINGLY
FILE NAME
BL1521075P19T03G-04
JOB No.
554-1521-075 P19 T03
DATE
JUNE 2021

DESIGNED
M. TSUN
DRAWN
B. PURGANAN
CHECKED
Y. HO
APPROVED
J. BAILEY

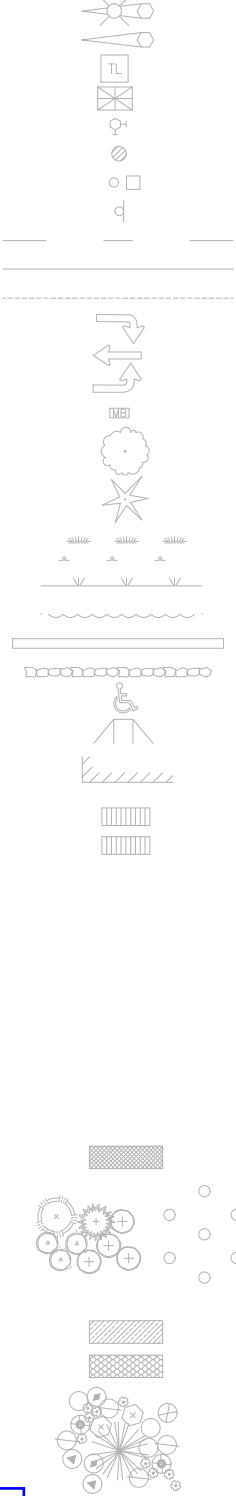
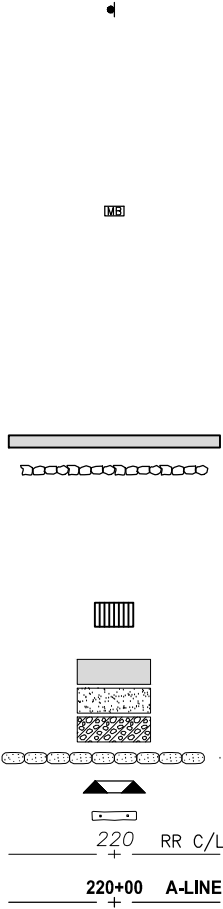
LEGEND

DESCRIPTION

PROPOSED

EXISTING

TRAFFIC SIGNAL POLE W/ LAMP
TRAFFIC SIGNAL POLE
TRAFFIC CONTROL LOOP (SQ)
TRAFFIC CONTROL CABINET
PEDESTRIAN POLE
SAMPLE PLOT
SURFACE POST
SIGN
SKIP LANE LINE
SOLID LANE LINE
FOG LINE
LTO ARROW
STO ARROW
RTO ARROW
MAILBOX
DECIDUOUS TREE
CONIFEROUS TREE
WETLAND SYMBOL
WETLAND BOUNDARY
VEGETATION
STRUCTURAL EARTH WALL
ROCK WALL
HANDICAPPED SYMBOL
WHEELCHAIR RAMP
BUILDING LINE
CONCRETE STAIR LINE
WOOD STAIRWAY
REMOVE ASPHALT
PATTERNED CONCRETE INTERSECTION
SLOPE PROTECTION
SANDBAG DAM
CHECK DAM
WATTLE CHECK DAM
FORMER RAILROAD CENTERLINE
CONSTRUCTION CENTERLINE
PREVIOUSLY PLANTED AREA - LOW SHRUB
PREVIOUSLY PLANTED AREA - TREES
WORK BY OTHERS - RIPARIAN RESTORATION AREA
WORK BY OTHERS - EMERGENT/BACKWATER RESTORATION AREA
WORK BY OTHERS - TREES AND SHRUBS



CITY OF SAMMAMISH PUBLIC WORKS
DEVELOPMENT REVIEW
These drawings have been reviewed for compliance with City of Sammamish Clearing and Grading and Stormwater requirements and also in accordance with the requirements as established in the Settlement Agreement between King County vs. City of Sammamish No. C17-0921 JCC and King County vs. City of Sammamish No. 17-2-29922-7 SEA and have been deemed ACCEPTABLE. The reviewer accepts no responsibility for any errors and/or omissions made by the preparer of these drawings.
17 February 2022

CITY OF SAMMAMISH APPROVAL	
City Engineer	Date
Community Development	Date

LEGEND

SHEET NO.
5 OF 213
G4

PROJECT NAME
EAST LAKE SAMMAMISH
MASTER PLAN TRAIL
SOUTH SAMMAMISH SEGMENT B - PHASE 2
SAMMAMISH, WA