




**CITY OF SAMMAMISH PUBLIC WORKS  
DEVELOPMENT REVIEW**

These drawings have been reviewed for compliance with City of Sammamish Clearing and Grading and Stormwater requirements and also in accordance with the requirements as established in the Settlement Agreement between King County vs. City of Sammamish No. C17-0921 JCC and King County vs. City of Sammamish No. 17-2-29922-7 SEA and have been deemed **ACCEPTABLE**. The reviewer accepts no responsibility for any errors and/or omissions made by the preparer of these drawings.

**17 February 2022**

CITY OF SAMMAMISH APPROVAL	
City Engineer _____	Date _____
Community Development _____	Date _____

	REVISIONS	DATE	BY	DESIGNED R. PUSEY
				DRAWN B. PURGANAN
				CHECKED Y. HO
				APPROVED J. BAILEY

**ONE INCH AT FULL SCALE.  
IF NOT, SCALE ACCORDINGLY**

FILE NAME  
BL1521075P19T03G-05

JOB No.  
554-1521-075 P19 T03

DATE  
JUNE 2021



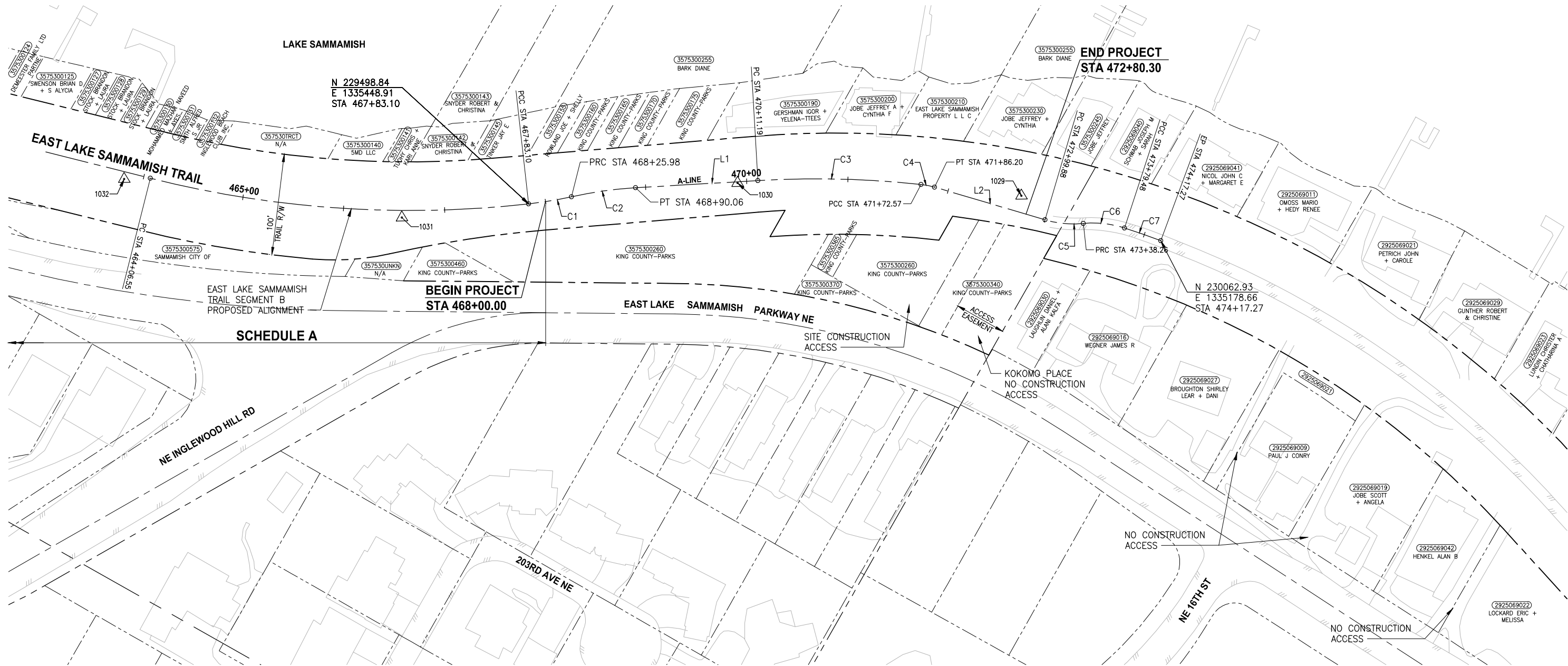
PROJECT NAME

**EAST LAKE SAMMAMISH  
MASTER PLAN TRAIL  
SOUTH SAMMAMISH SEGMENT B - PHASE 2**

SAMMAMISH, WA

## SURVEY CONTROL PLAN

PATH: U:\PSO\Projects\1521-KingCo\554-1521-075-ELST\955\cs\CADD\Phase 2\103\DWG\ PLOTTED BY: purgubut DATE: Monday, June 14, 2021 3:56:11 PM LAYOUT: G4



CONTROL POINT TABLE				
POINT #	NORTHING	EASTING	ELEVATION	DESCRIPTION
1029	229921.05	1335206.44	47.06	REBAR & CAP
1030	229669.58	1335331.02	46.27	REBAR & CAP
1031	229395.84	1335521.28	46.14	REBAR & CAP
1032	229137.35	1335620.66	46.49	REBAR & CAP

**SURVEY NOTES:**

- HORIZONTAL DATUM: NAD83 (CORS).
- RTK CORRECTIONS OBTAINED FROM NGS CORS ID POINT "SEAT" ON OCTOBER 3, 2007.
- VERTICAL DATUM: NAVD88.
- WSDOT SITE BENCHMARKS HELD FOR THIS SURVEY ARE NOS. 2355, 6762, 6294, AND 617.
- METHODOLOGY: FIELD MEASUREMENTS FOR THIS SURVEY WERE PERFORMED USING TRIMBLE 5800 RTK WITH CELL PHONE AND LEICA TCRA 1103 FULL ROBOTIC 3 SECOND TOTAL STATION IN CONFORMANCE WITH ACCEPTED SURVEY STANDARDS AS SPECIFIED BY WAC 332-130 FOR LINEAR AND ANGULAR CLOSURE.
- THE RIGHT-OF-WAY DIMENSIONS SHOWN WERE PROVIDED BY KING COUNTY SURVEY AND DO NOT REPRESENT A BOUNDARY SURVEY PERFORMED BY PARAMETRIX.

SEE DWG G5 FOR  
TRAIL CONSTRUCTION  
ACCESS LOCATIONS



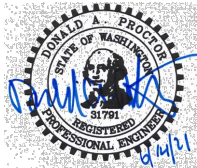
**ALIGNMENT DATA TABLE:**

A-LINE				
Number	Radius	Length	Line/Chord Direction	A Value
C1	400.00	42.87	N38° 23' 51.31"W	
C2	400.00	64.08	N36° 52' 42.20"W	
L1		121.13	N32° 17' 19.15"W	
C3	980.00	161.38	N27° 34' 15.49"W	
C4	75.00	13.63	N17° 38' 46.67"W	
L2		113.67	N12° 26' 21.51"W	
C5	100.00	38.38	N23° 26' 07.44"W	
C6	100.00	41.22	N22° 37' 19.16"W	
C7	980.00	37.79	N9° 42' 28.24"W	

CITY OF SAMMAMISH APPROVAL	
City Engineer	Date

**CITY OF SAMMAMISH PUBLIC WORKS DEVELOPMENT REVIEW**  
These drawings have been reviewed for compliance with City of Sammamish Clearing and Grading and Stormwater requirements and also in accordance with the requirements as established in the Settlement Agreement between King County vs. City of Sammamish No. C17-0921 JCC and King County vs. City of Sammamish No. 17-2-29922-7 SEA and have been deemed ACCEPTABLE. The reviewer accepts no responsibility for any errors and/or omissions made by the preparer of these drawings.  
17 February 2022

CONFORMED DRAWINGS



**Parametrix**  
ENGINEERING · PLANNING · ENVIRONMENTAL SCIENCES

719 2ND AVENUE, SUITE 200 | SEATTLE, WA 98104  
P 206.394.3700  
WWW.PARAMETRIX.COM

PROJECT NAME  
**KING COUNTY PARKS AND RECREATION  
INGLEWOOD HILL ROAD  
PARKING LOT - PHASE 1**  
SAMMAMISH, WA

**SURVEY CONTROL, ALIGNMENT  
AND ACCESS PLAN**

SHEET NO.  
162 OF 213

**G4**

ONE INCH AT FULL SCALE.  
IF NOT, SCALE ACCORDINGLY  
FILE NAME  
BL1521075P21T03G-04  
JOB No.  
554-1521-075 P21T03  
DATE  
JUNE 2021

DESIGNED  
D. THIBODEAU  
DRAWN  
B. PURGANAN  
CHECKED  
R. PARKER  
APPROVED  
D. PROCTOR

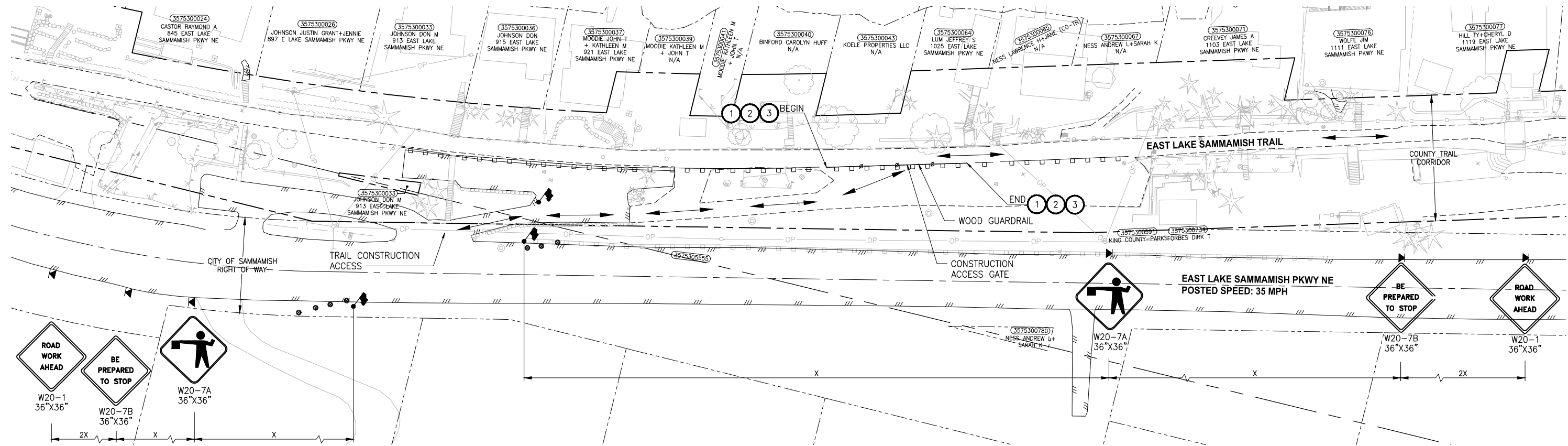
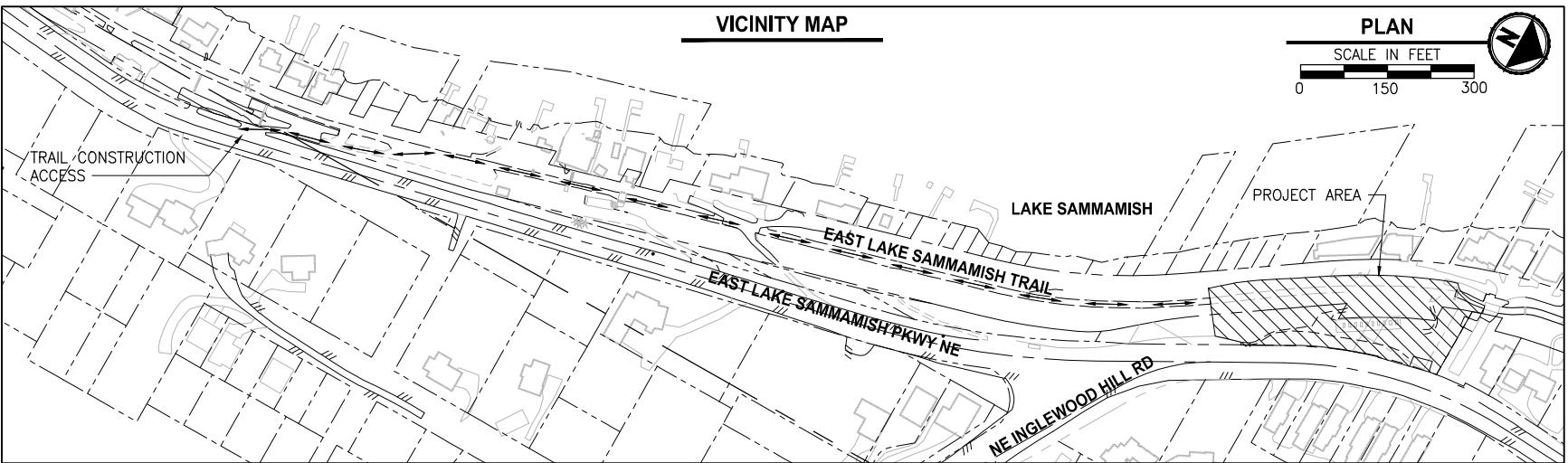
DATE  
BY

REVISIONS



GENERAL NOTES:

1. TRAIL SPEED LIMIT: 5MPH
2. SEE SPECIAL PROVISIONS FOR WOOD GUARD RAIL SALVAGE REQUIREMENTS.
3. PERFORM PROPERTY RESTORATION AT END OF CONSTRUCTION AS DIRECTED BY PROJECT REPRESENTATIVE. CONFIRM EXACT LIMITS OF WOOD GUARDRAIL REMOVAL WITH PROJECT REPRESENTATIVE PRIOR TO PREPARATION WORK.
4. THE SHOWN WORK INCLUSIVE OF TRAFFIC CONTROL AND HAUL ROUTE WILL REQUIRE A TYPE A RIGHT-OF-WAY USE PERMIT ASSOCIATED WITH FLAGGING AND STOPPING TRAFFIC.
5. LANE CLOSURES ARE ONLY ALLOWED DURING WEEKDAYS FROM 9:30 AM TO 3:30 PM.



ACCESS CONSTRUCTION NOTES:

1. REMOVE WOOD GUARDRAIL PRIOR TO CONSTRUCTION (SEE GENERAL NOTE 4)
2. PLACE PRECAST CONCRETE BARRIER TYPE 2 (PER WSDOT STANDARD PLAN C-8) AT END OF CONSTRUCTION
3. TEMPORARY CHAIN LINK SECURITY FENCE AND GATE

LEGEND:

- FLAGGING STATION
- TEMPORARY SIGN LOCATION
- CHANNELIZING DEVICES



CHANNELIZATION DEVICE SPACING (FEET)

MPH	TAPER	TANGENT
50/70	40	80
35/45	30	60
25/30	20	40

SIGN SPACING = X (1)

RURAL HIGHWAYS	60/65 MPH	800'±
RURAL ROADS	45/55 MPH	500'±
RURAL ROADS & URBAN ARTERIALS	35/40 MPH	350'±
RURAL ROADS & URBAN ARTERIALS RESIDENTIAL & BUSINESS DISTRICTS	25/30 MPH	200'± (2)
URBAN STREETS	25 MPH OR LESS	100'± (2)

(1) ALL SPACING MAY BE ADJUSTED TO ACCOMMODATE INTERCHANGE RAMP, AT-GRADE INTERSECTIONS AND DRIVEWAYS.

(2) THIS SPACING MAY BE REDUCED IN URBAN AREAS TO FIT ROADWAY CONDITIONS.

CITY OF SAMMAMISH APPROVAL

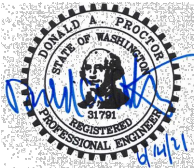
City Engineer \_\_\_\_\_ Date \_\_\_\_\_

CITY OF SAMMAMISH PUBLIC WORKS DEVELOPMENT REVIEW

These drawings have been reviewed for compliance with City of Sammamish Clearing and Grading and Stormwater requirements and also in accordance with the requirements as established in the Settlement Agreement between King County vs. City of Sammamish No. C17-0921 JCC and King County vs. City of Sammamish No. 17-2-29922-7 SEA and have been deemed ACCEPTABLE. The reviewer accepts no responsibility for any errors and/or omissions made by the preparer of these drawings.

17 February 2022

CONFORMED DRAWINGS



Parametrix

ENGINEERING · PLANNING · ENVIRONMENTAL SCIENCES

719 2ND AVENUE, SUITE 200 | SEATTLE, WA 98104  
P 206.394.3700  
WWW.PARAMETRIX.COM

PROJECT NAME

KING COUNTY PARKS AND RECREATION  
INGLEWOOD HILL ROAD  
PARKING LOT - PHASE 1

SAMMAMISH, WA

CONSTRUCTION ACCESS

SHEET NO.

163 OF 213

G5