

ALIGNMENT	STA START	STA END	CROSS SLOPE DIRECTION
C-LINE	371+50	378+47	RT
C-LINE	378+47	385+64	LT
C-LINE	385+64	389+94	RT
C-LINE	389+94	396+16	LT
C-LINE	396+16	418+55	RT
D-LINE	419+00	467+00	RT
D-LINE	467+00	468+00	LT

ALIGNMENT	STA START	STA END	TRENCH	SIDE OF TRAIL
C—LINE	375+18	377+31	UD	RT
C—LINE	390+37	391+78	IT	RT
C—LINE	393+39	394+76	IT	RT
C—LINE	394+98	395+73	IT	RT
C—LINE	395+90	399+89	UD	RT
D—LINE	432+94	434+41	UD	RT
D—LINE	446+75	448+72	UD	RT
D—LINE	450+73	451+83	UD	RT
D—LINE	451+85	452+87	UD	RT
D—LINE	452+96	453+93	UD	RT
D—LINE	453+98	454+44	UD	RT
D—LINE	454+67	455+67	UD	RT
D—LINE	456+56	458+62	UD	RT
D—LINE	464+47	466+00	IT	RT

ALIGNMENT	STA START	STA END	SIDE OF TRAIL
C-LINE	376+92	378+76	RT
C-LINE	379+75	380+60	RT
C-LINE	380+80	383+75	RT
C-LINE	400+50	401+00	RT
C-LINE	408+40	410+72	RT
D-LINE	426+00	431+25	RT
D-LINE	436+84	437+35	RT



- 1 HMA CL. 3/8" PG 64--22.
- 2 5/8" MINUS CRUSHED LEDGE ROCK, 100% FRACTURED. SEE SPECIAL PROVISIONS FOR SPECIFICATIONS.
- 3 RETAINING WALL, SEE AL SHEETS AND WP SHEETS FOR LOCATIONS, PROFILES AND WALL TYPES. SEE SHEET WD1 FOR DETAILS.
- 4 SEE SLOPE RESTORATION DETAILS ON LA SHEETS.
- 5 EXISTING BALLAST BASE.
- 6 SELECT BORROW INCL. HAUL.
- 7 2-RAIL FENCE, COATED CHAIN LINK FENCE OR GUARDRAIL. SEE AL PLANS FOR LOCATIONS AND TYPES AND SEE DETAILS ON MD SHEETS.
- 8 CRUSHED SURFACING BASE COURSE.
- 9 PERMEABLE BALLAST.
- 10 3/4" CRUSHED CLEAN ROCK. SEE SPECIAL PROVISIONS FOR SPECIFICATIONS.
- 11 WING WALL, SEE FP SHEETS FOR PROFILE AND DETAILS.
- 12 CONSTRUCTION GEOTEXTILE FOR SEPARATION MODERATE SURVIVABILITY.

1. SEE SHEET CS1 FOR CROSS SLOPE SCHEDULE. SEE DD SHEETS FOR CROSS SLOPE TRANSITIONS AND GRADE BREAKS.
2. SEE UT AND DD1 SHEETS FOR DETAILS WHERE INFILTRATION TRENCH OR UNDERDRAIN TRENCH IS WITHIN THE SHOULDER. SEE SHEET CS1 FOR INFILTRATION AND UNDERDRAIN SCHEDULE FOR LOCATION AND TYPE.
3. SEE SHEET CS1 FOR SLOPE PROTECTION SCHEDULE AND DETAIL ON SHEET MD4.

719 2ND AVENUE, SUITE 200 | SEATTLE, WA 98104
P 206.394.3700
WWW.PARAMETRIX.COM

**EAST LAKE SAMMAMISH
MASTER PLAN TRAIL
SOUTH SAMMAMISH SEGMENT B - PHASE 2**

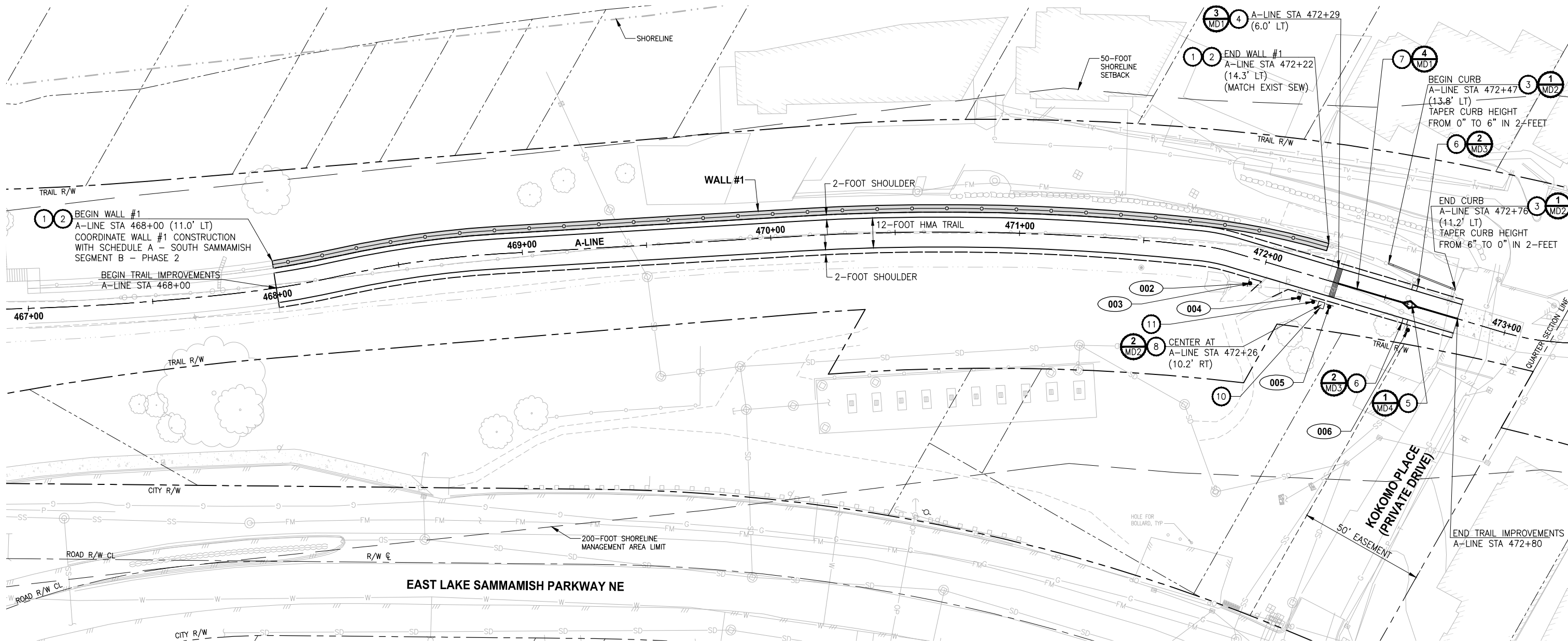
SAMMAMISH, WA

CS1

These drawings have been reviewed for compliance with City of Sammamish Clearing and Grading and Stormwater requirements and also in accordance with the requirements as established in the Settlement Agreement between King County vs. City of Sammamish No. C17-0921 JCC and King County vs. City of Sammamish No. 17-2-29922-7 SEA and have been deemed **ACCEPTABLE**. The reviewer accepts no responsibility for any errors and/or omissions made by the preparer of these drawings.

City Engineer	Date
Community Development	Date

PATH: U:\P50\Projects\Clients\1521-KingCo\554-1521-075-ELST\99S\est\CADD\Phase 2\T03.Dwg
LAYOUT: AL1
PLOTTED BY: purgubut DATE: Monday, June 14, 2021 3:59:58 PM



CONSTRUCTION NOTES:

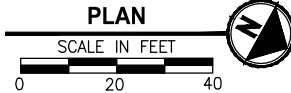
1. STRUCTURAL EARTH WALL (SEE DWG CS1 AND WP1)
2. 4-FOOT HEIGHT COATED CHAIN LINK FENCE (SEE DETAIL 1, DWG MD3)
3. CEMENT CONCRETE TRAFFIC CURB
4. CONCRETE WARNING BAND
5. REMOVABLE BOLLARD INSTALLATION
6. BOLLARD TYPE - FIXED
7. BOLLARD STRIPING
8. CONCRETE PAD FOR TRASH RECEPTACLE
9. NOT USED
10. TRASH RECEPTACLE (SEE SPECIAL PROVISION SECTION 8-19)
11. PET WASTE STATION (SEE SPECIAL PROVISION SECTION 8-19)

GENERAL NOTES:

1. SEE TYPICAL TRAIL CROSS SECTIONS IN CS1.
2. SEE LA1 FOR LANDSCAPE RESTORATION AND TREE PLANTING.

LEGEND:

- RETAINING WALL
- COATED CHAIN LINK FENCE WITH TOP RAIL
- SIGN, SEE SIGN SCHEDULE ON THIS SHEET.



Know what's below.
Call before you dig.

SIGN SCHEDULE

SIGN NUMBER	LOCATION			DESCRIPTION	MUTCD SIGN	SIGN SIZE	POST SIZE/TYPE	REMARK
	ALIGNMENT	STATION	OFFSET					
001	-	-	-	NOT USED	-	-	-	NOT USED
002	A-LINE	471+96	10.0' RT	TRAIL EXIT	R5-90R	12" X 18"	4" X 4", WOOD	NEW SIGN, NEW POST
003	A-LINE	471+96	10.0' RT	INTERSECTION WARNING SYMBOL	W2-1	18" X 18"	N/A	EXIST SIGN RELOCATED, SAME POST AS 002
004	A-LINE	472+17	10.0' RT	TRAIL EXIT	R5-90L	12" X 18"	4" X 4", WOOD	NEW SIGN, NEW POST
005	A-LINE	472+30	10.0' RT	PET/TRAIL RULES	CUSTOM	12" X 18"	2.5" X 2.5" 12-GAGE STEEL TUBE	EXIST SIGN RELOCATED, NEW POST
006	A-LINE	472+62	10.0' RT	SPEED LIMIT 15	R2-1	12" X 18"	4" X 4", WOOD	EXIST SIGN RELOCATED, NEW POST

CITY OF SAMMAMISH APPROVAL	
City Engineer	Date
Community Development	Date

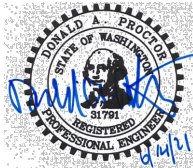
CITY OF SAMMAMISH STAMPS

CITY OF SAMMAMISH PUBLIC WORKS DEVELOPMENT REVIEW

These drawings have been reviewed for compliance with City of Sammamish Clearing and Grading and Stormwater requirements and also in accordance with the requirements as established in the Settlement Agreement between King County vs. City of Sammamish No. C17-0921 JCC and King County vs. City of Sammamish No. 17-2-29922-7 SEA and have been deemed ACCEPTABLE. The reviewer accepts no responsibility for any errors and/or omissions made by the preparer of these drawings.

17 February 2022

CONFORMED DRAWINGS



ONE INCH AT FULL SCALE.
IF NOT, SCALE ACCORDINGLY

FILE NAME
BL1521075P21T03AL-01
JOB No.
554-1521-075 P21T03
DATE
JUNE 2021

Parametrix
ENGINEERING · PLANNING · ENVIRONMENTAL SCIENCES

719 2ND AVENUE, SUITE 200 | SEATTLE, WA 98104
P 206.394.3700
WWW.PARAMETRIX.COM

PROJECT NAME

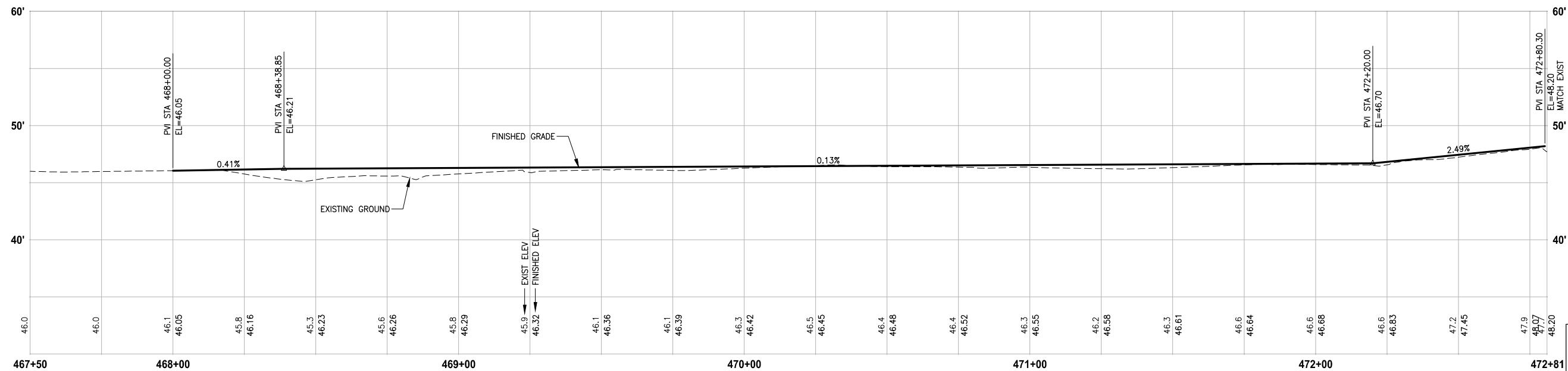
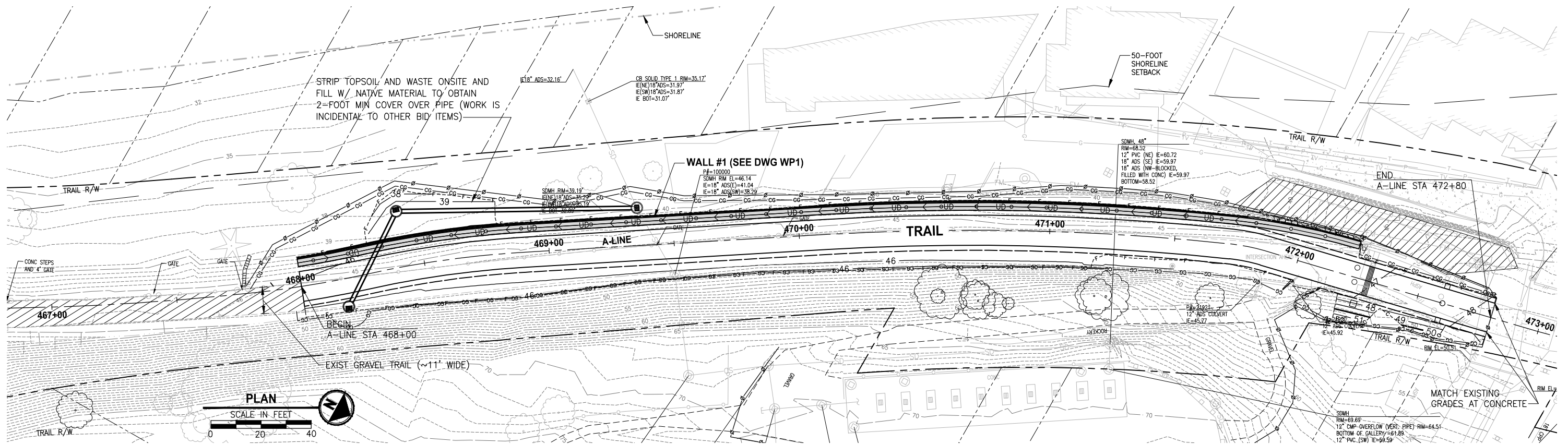
**KING COUNTY PARKS AND RECREATION
INGLEWOOD HILL ROAD
PARKING LOT - PHASE 1
SAMMAMISH, WA**

SITE IMPROVEMENTS PLAN

SHEET NO.
168 OF 213

AL1

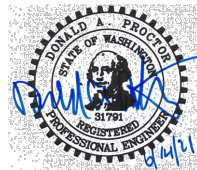
PATH: U:\P50\Projects\Clients\1521-075-ELST\985\cadd\Phase 21\T03.Dwg PLOTTED BY: purgubut DATE: Monday, June 14, 2021 4:02:01 PM LAYOUT: GR1



A-LINE PROFILE

HORIZ: 1"=20'
VERT: 1"=5'

CONFORMED DRAWINGS



Parametrix
ENGINEERING · PLANNING · ENVIRONMENTAL SCIENCES

719 2ND AVENUE, SUITE 200 | SEATTLE, WA 98104
P 206.394.3700
WWW.PARAMETRIX.COM

PROJECT NAME

**KING COUNTY PARKS AND RECREATION
INGLEWOOD HILL ROAD
PARKING LOT - PHASE 1**

SAMMAMISH, WA

GRADING PLAN & PROFILE

SHEET NO.
169 OF 213

GR1

CITY OF SAMMAMISH APPROVAL

City Engineer _____ Date _____

**CITY OF SAMMAMISH PUBLIC WORKS
DEVELOPMENT REVIEW**

These drawings have been reviewed for compliance with City of Sammamish Clearing and Grading and Stormwater requirements and also in accordance with the requirements as established in the Settlement Agreement between King County vs. City of Sammamish No. C17-0921 JCC and King County vs. City of Sammamish No. 17-2-29922-7 SEA and have been deemed ACCEPTABLE. The reviewer accepts no responsibility for any errors and/or omissions made by the preparer of these drawings.
17 February 2022

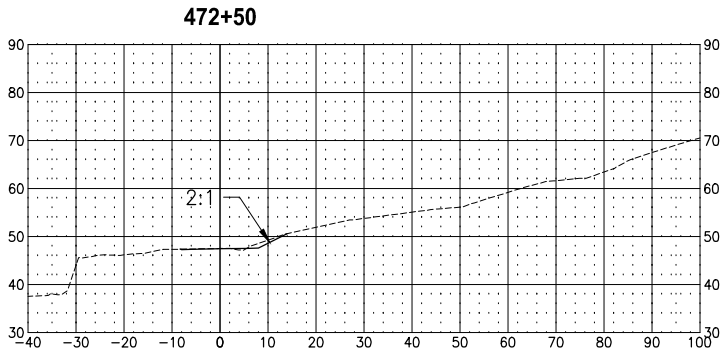
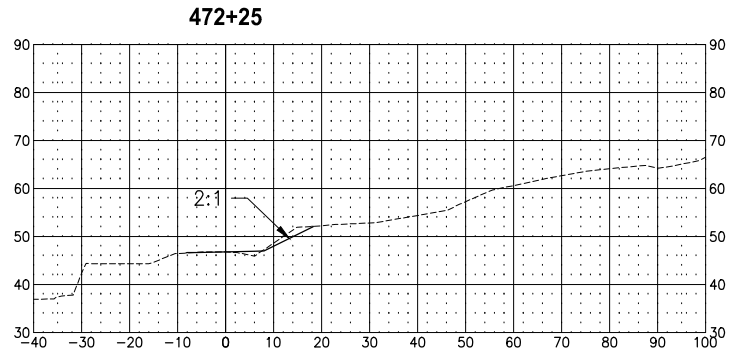
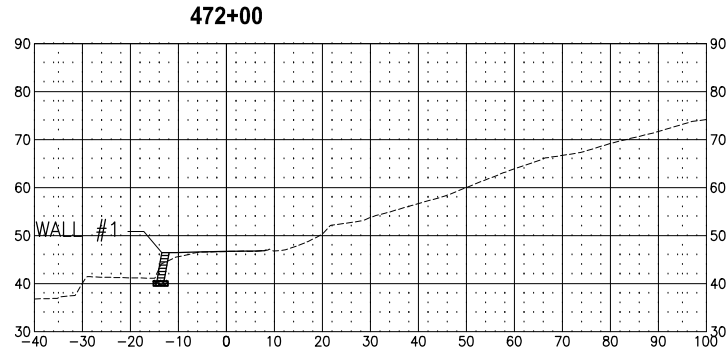
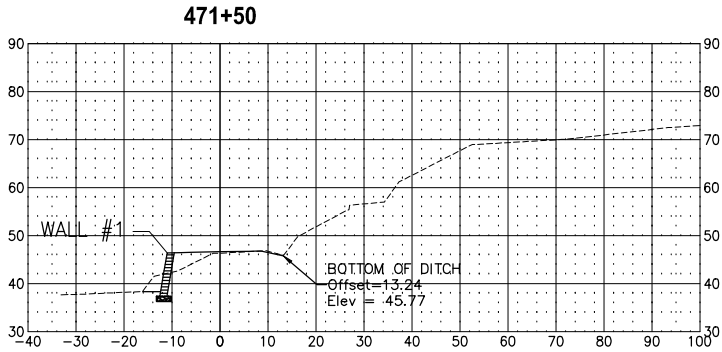
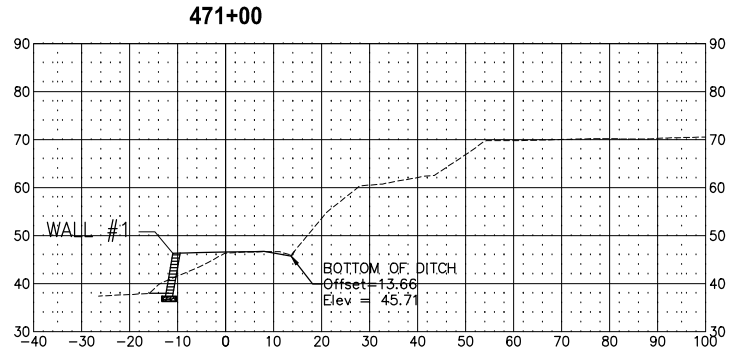
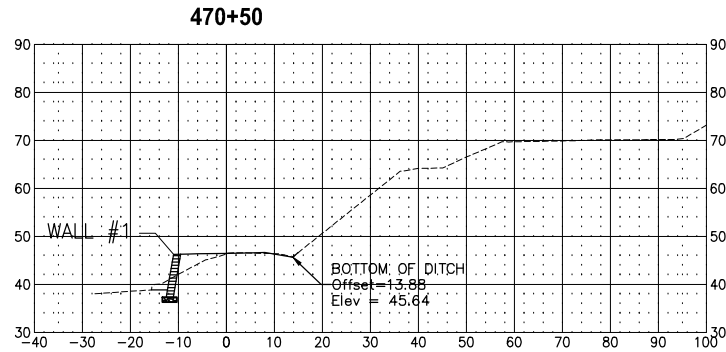
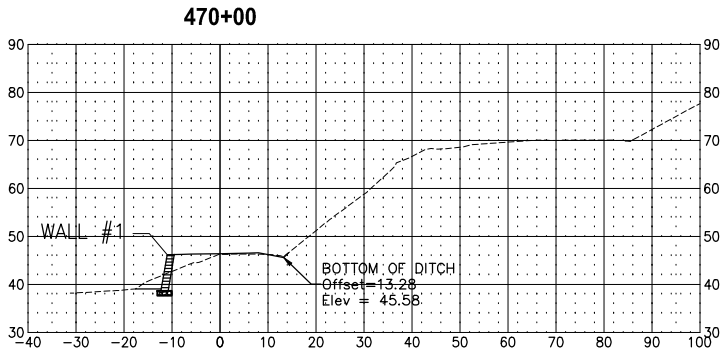
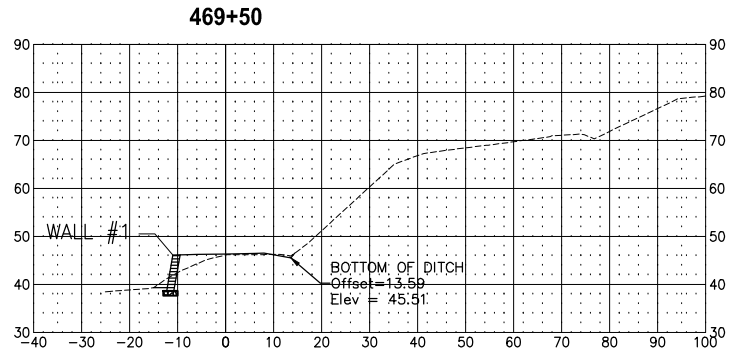
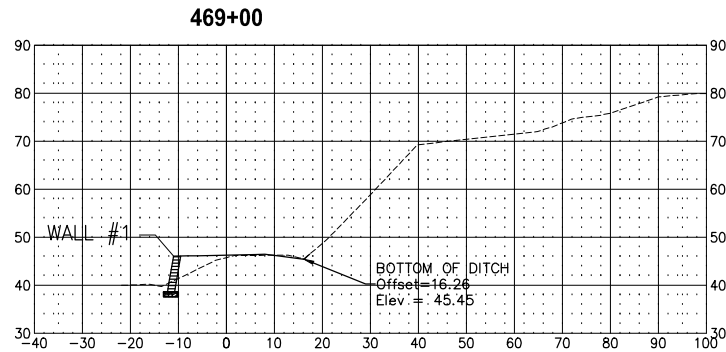
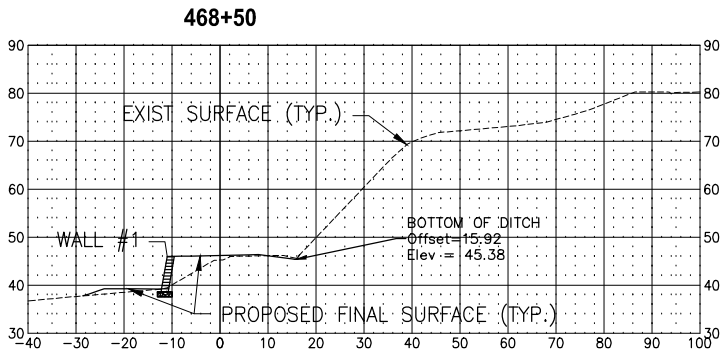
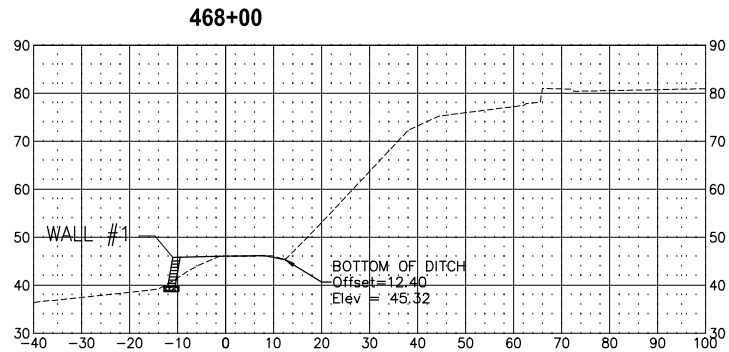


Know what's below.
Call before you dig.

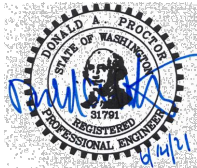
PATH: U:\P50\Projects\Clients\1521-KingCo\554-1521-075-ELST\98\Sub\CADD\Phase 21\T03.Dwg

LAYOUT: XS1

PLOTTED BY: purgebut DATE: Monday, June 14, 2021 4:02:51 PM



CONFORMED DRAWINGS



Parametrix

ENGINEERING · PLANNING · ENVIRONMENTAL SCIENCES

719 2ND AVENUE, SUITE 200 | SEATTLE, WA 98104
P 206.394.3700
WWW.PARAMETRIX.COM

PROJECT NAME

**KING COUNTY PARKS AND RECREATION
INGLEWOOD HILL ROAD
PARKING LOT - PHASE 1**

SAMMAMISH, WA

**CITY OF SAMMAMISH PUBLIC WORKS
DEVELOPMENT REVIEW**

These drawings have been reviewed for compliance with City of Sammamish Clearing and Grading and Stormwater requirements and also in accordance with the requirements as established in the Settlement Agreement between King County vs. City of Sammamish No. C17-0921 JCC and King County vs. City of Sammamish No. 17-2-29922-7 SEA and have been deemed ACCEPTABLE. The reviewer accepts no responsibility for any errors and/or omissions made by the preparer of these drawings.

17 February 2022

CITY OF SAMMAMISH APPROVAL

City Engineer _____

Date _____

Community Development _____

Date _____

CITY OF SAMMAMISH STAMPS

REVISIONS	DATE	BY	DESIGNED
			R. MCCABE
			DRAWN R. MCCABE
			CHECKED R. PARKER
			APPROVED D. PROCTOR

**ONE INCH AT FULL SCALE.
IF NOT, SCALE ACCORDINGLY**

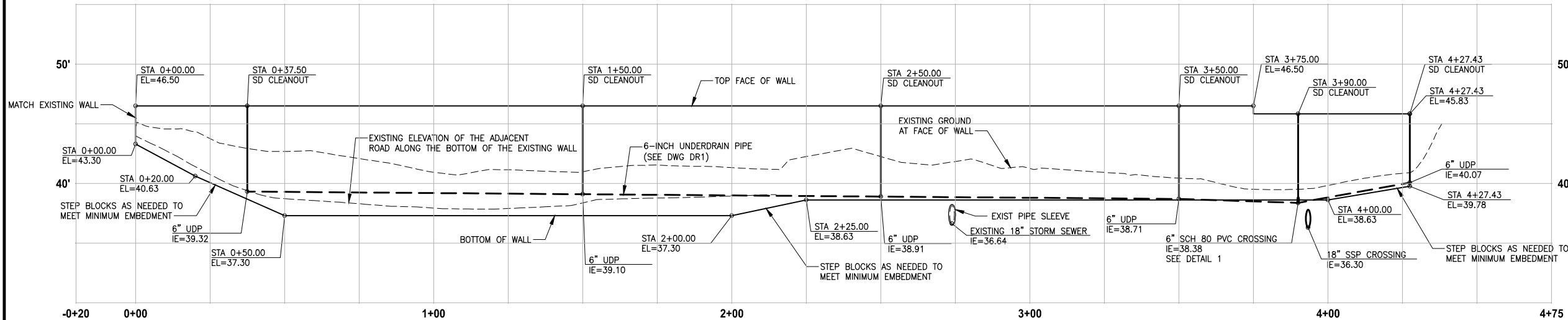
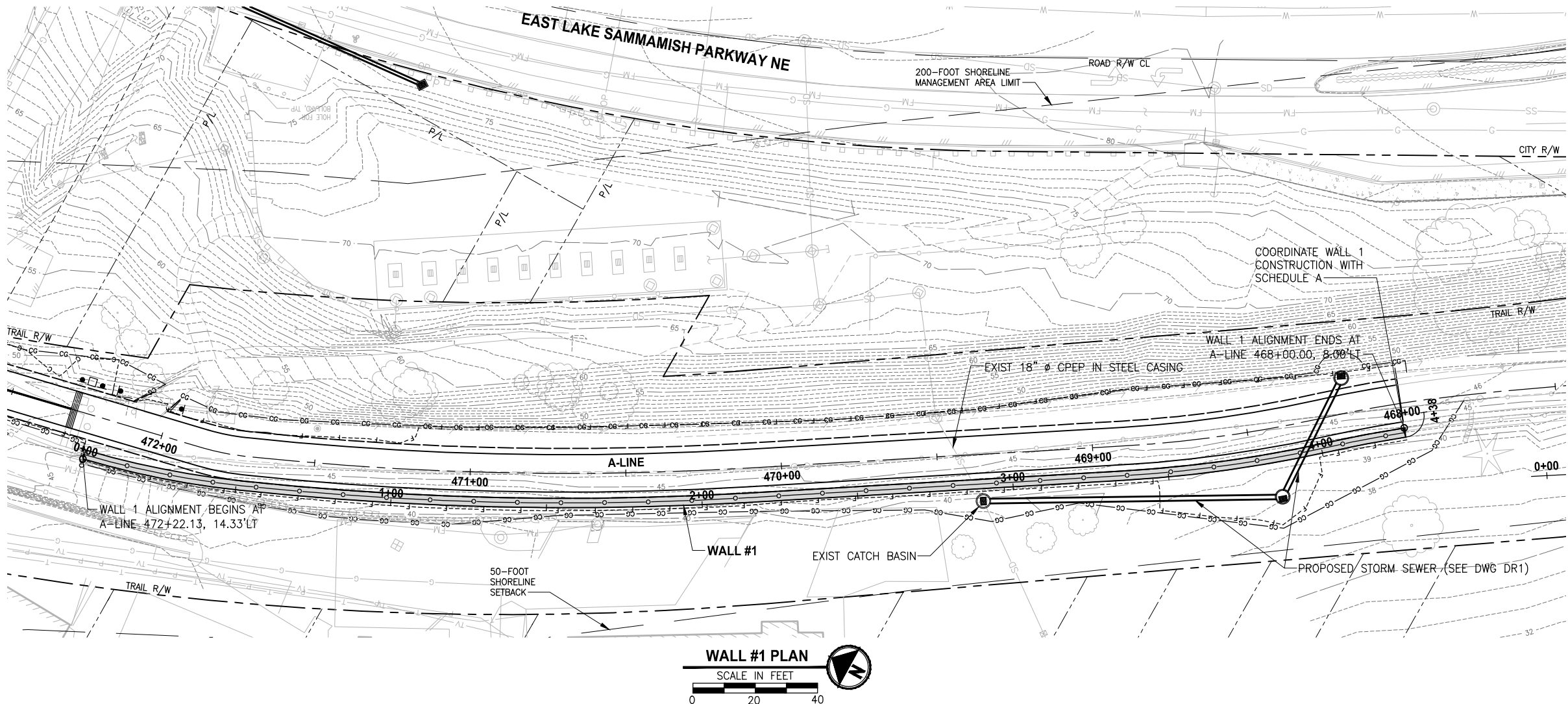
FILE NAME
BL1521075P21T03XS-01
JOB No.
554-1521-075 P21T03
DATE
JUNE 2021

GRADING SECTIONS

SHEET NO.
170 OF 213

XS1

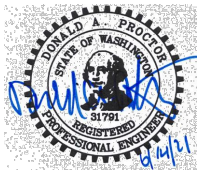
U:\P50\Projects\Clients\1521-075-ELST\99Sves\CAD\Phase 21\T03.Dwg\ PLOTTED BY: purgubut DATE: Monday, June 14, 2021 4:04:45 PM LAYOUT: WP1



WALL #1 PROFILE

HORIZ: 1"=20'
VERT: 1"=5'

CONFORMED DRAWINGS



Parametrix
ENGINEERING · PLANNING · ENVIRONMENTAL SCIENCES

719 2ND AVENUE, SUITE 200 | SEATTLE, WA 98104
P 206.394.3700
WWW.PARAMETRIX.COM

PROJECT NAME
**KING COUNTY PARKS AND RECREATION
INGLEWOOD HILL ROAD
PARKING LOT - PHASE 1**
SAMMAMISH, WA

WALL 1 PLAN & PROFILE

SHEET NO.
171 OF 213

WP1

GENERAL NOTES:

1. WALL ALIGNMENT IS AT APPROXIMATE BOTTOM FACE OF WALL.
2. SEE UNDERDRAIN PIPE CLEANOUT DETAIL 1 ON DWG SD1.
3. UNDERDRAIN CLEANOUT LIDS SHALL BE INSTALLED ALONG THE BACK OF WALL BLOCK AND SHALL NOT BE IN TRAIL HMA PAVEMENT.
4. FILL BLOCK UNITS WITH UNIT DRAINAGE FILL.
5. ALL CONSTRUCTION MUST CONFORM TO MANUFACTURER'S SPECIFIC REQUIREMENTS.
6. FENCE POSTS SHALL HAVE MIN 24" DEPTH EMBEDMENT.
7. ANCHOR GEOGRID REINFORCEMENT BETWEEN BLOCKS PER MANUFACTURER'S REQUIREMENTS.
8. INSTALL DRAIN PIPE CROSSINGS UNDER WALLS AS RECOMMENDED BY WALL MANUFACTURER/SUPPLIER.
9. SEE SPECIAL PROVISIONS SECTION 6-13 FOR CONTRACTOR'S BIDDER DESIGN, SUBMITTAL, AND PERMITTING REQUIREMENTS.
10. THE ALLOWABLE SOIL BEARING CAPACITY FOR WALL AND REINFORCED FILL ZONE SUBGRADE SHALL BE 2,500 PSF.
11. SEE DWG SP1 FOR TREE PROTECTION REQUIREMENTS.
12. BLOCK WALL UNIT 8"HX18"WX21.5"D (STRAIGHT, TEXTURED EXTERIOR FACE).

SEW DESIGN REQUIREMENTS:

PARAMETER	REINFORCED FILL ZONE	RETAINED SOIL	FOUNDATION SOIL
UNIT WEIGHT(PCF)	125	125	125
PHI (°)	32	34	34
COHESION (PSF)	0	0	200

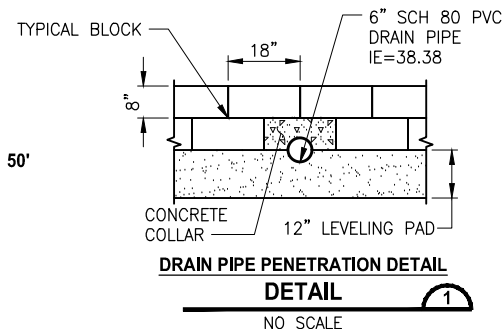
PCF = POUNDS PER CUBIC FOOT; PSF = POUNDS PER SQUARE FOOT

SEW EMBEDMENT REQUIREMENTS:

SLOPE IN FRONT OF WALL	MINIMUM EMBEDMENT DEPTH (FEET)
HORIZONTAL	WALL HEIGHT/20 OR 1 FOOT, WHICHEVER IS GREATER
3H:1V	WALL HEIGHT/10 OR 1 FOOT, WHICHEVER IS GREATER
2H:1V	WALL HEIGHT/7 OR 1 FOOT, WHICHEVER IS GREATER

LEGEND:

- COATED CHAIN LINK FENCE WITH TOP RAIL
- CG—CG— CLEARING AND GRUBBING

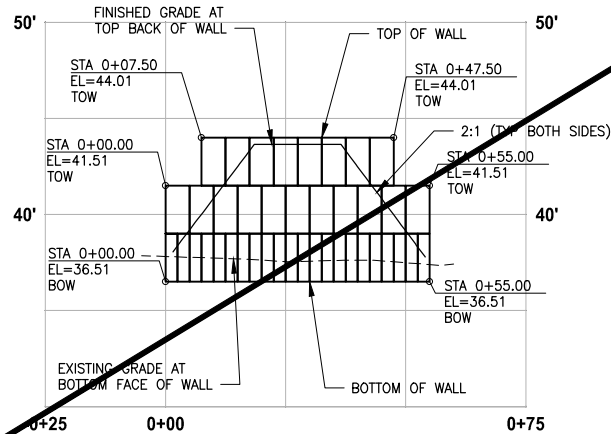
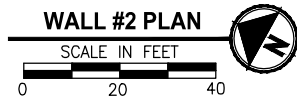
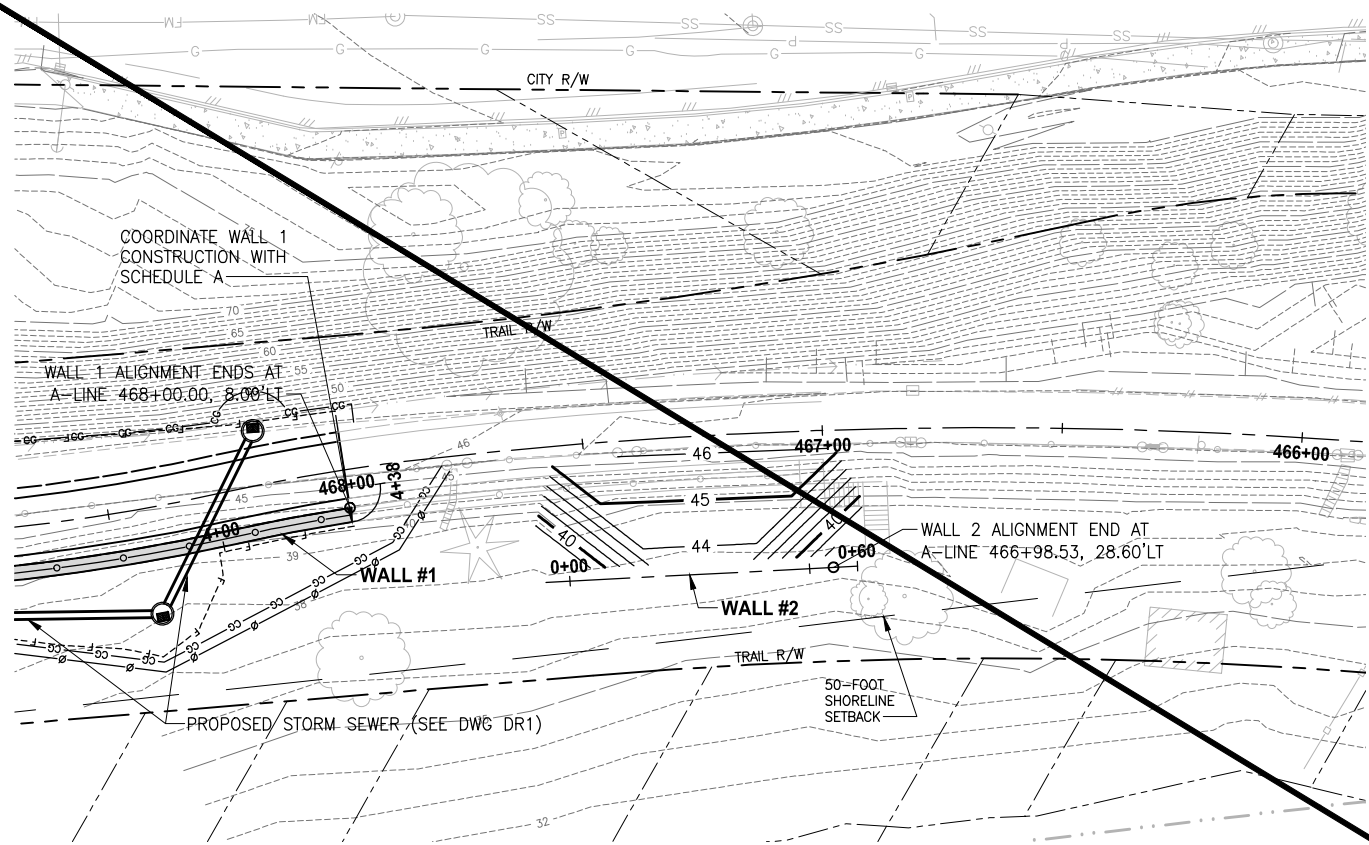


CITY OF SAMMAMISH APPROVAL	
City Engineer	Date

**CITY OF SAMMAMISH PUBLIC WORKS
DEVELOPMENT REVIEW**

These drawings have been reviewed for compliance with City of Sammamish Clearing and Grading and Stormwater requirements and also in accordance with the requirements as established in the Settlement Agreement between King County vs. City of Sammamish No. C17-0921 JCC and King County vs. City of Sammamish No. 17-2-29922-7 SEA and have been deemed ACCEPTABLE. The reviewer accepts no responsibility for any errors and/or omissions made by the preparer of these drawings.
17 February 2022

PATH: U:\PSO\Projects\Clients\1521-KingCo\554-1521-075-ELST\995Sec\CADD\Phase 21\T03.Dwg\ PLOTTED BY: purgubut DATE: Monday, June 14, 2021 4:04:54 PM LAYOUT: WP2



HORIZ: 1"=20'
VERT: 1"=5'

GRAVITY BLOCK WALL DESIGN REQUIREMENTS:

SOIL TYPE	MOIST UNIT WEIGHT (PCF)	Φ (°)	C (PSF)
RETAINED SOIL (1)	125	34	0
FOUNDATION SUBGRADE	120	36	0

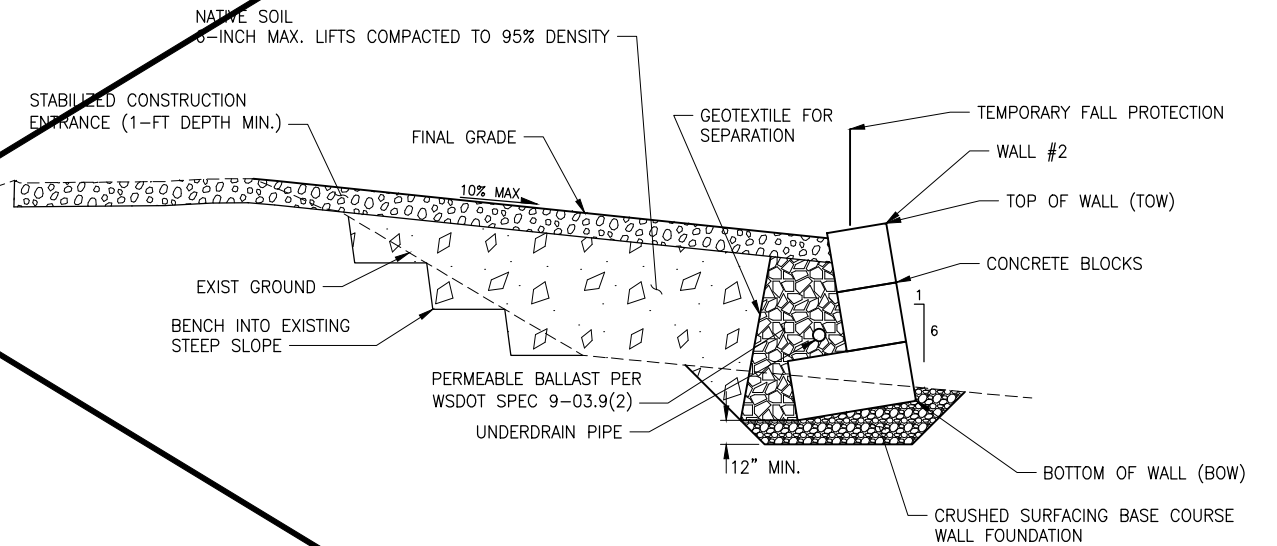
PCF = POUNDS PER CUBIC FOOT; PSF = POUNDS PER SQUARE FOOT
(1) DRAINAGE FILL THAT IS PLACED BETWEEN THE PMUS AND THE RETAINED SOIL SHOULD CONSIST OF "PERMEABLE BALLAST" CONSISTENT WITH THE 2018 WSDOT STANDARD SPECIFICATIONS SECTION 9-03.9(2).
 Φ = ANGLE OF INTERNAL FRICTION
C = COHESION

LEGEND:

- TEMPORARY CHAIN LINK SECURITY FENCE
- COATED CHAIN LINK FENCE WITH TOP RAIL
- CLEARING AND GRUBBING

GENERAL NOTES:

- WALL ALIGNMENT IS AT APPROXIMATE BOTTOM FACE OF WALL.
- SEE UNDERDRAIN PIPE CLEANOUT DETAIL 1 ON DWG SD1.
- UNDERDRAIN CLEANOUT LIDS SHALL BE INSTALLED ALONG THE BACK OF WALL BLOCK AND SHALL NOT BE IN TRAIL HMA PAVEMENT.
- REMOVE BLOCKS AND FILL AT END OF CONSTRUCTION AND GRADE SMOOTH.
- ALL WORK REQUIRED ON THIS SHEET IS INCLUDED IN THE LUMP SUM BID ITEM "TEMPORARY GRAVITY BLOCK WALL" EXCEPT THE STABILIZED CONSTRUCTION ENTRANCE.
- FENCE POSTS SHALL HAVE MIN 24" DEPTH EMBEDMENT.
- ANCHOR GEOGRID REINFORCEMENT BETWEEN BLOCKS PER MANUFACTURER'S REQUIREMENTS.
- INSTALL DRAIN PIPE CROSSINGS UNDER WALLS AS RECOMMENDED BY WALL MANUFACTURER/SUPPLIER.
- SEE SPECIAL PROVISIONS SECTION 8-19 FOR CONTRACTOR'S BIDDER DESIGN, SUBMITTAL, AND PERMITTING REQUIREMENTS.
- DESIGN LIVE LOAD SHALL BE 350 PSF MINIMUM.
- SEE DWG SD1 FOR TREE PROTECTION REQUIREMENTS.



WALL #2

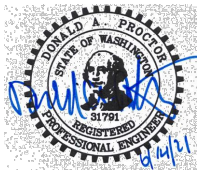
TYPICAL SECTION

NO SCALE

CITY OF SAMMAMISH APPROVAL	
City Engineer	Date
Community Development	Date

CITY OF SAMMAMISH STAMPS

CONFORMED DRAWINGS



Parametrix

ENGINEERING · PLANNING · ENVIRONMENTAL SCIENCES

719 2ND AVENUE, SUITE 200 | SEATTLE, WA 98104
P 206.394.3700
WWW.PARAMETRIX.COM

PROJECT NAME

KING COUNTY PARKS AND RECREATION
INGLEWOOD HILL ROAD
PARKING LOT - PHASE 1
SAMMAMISH, WA

SHEET NO.
172 OF 213

WALL 2 PLAN & PROFILE

WP2

ONE INCH AT FULL SCALE.
IF NOT, SCALE ACCORDINGLY

FILE NAME
BL1521075P21T03WP-01

JOB No.
554-1521-075 P21T03

DATE
JUNE 2021

REVISIONS	DATE	BY	DESIGNED
			R. MCCABE
			R. MCCABE
			R. PARKER
			D. PROCTOR