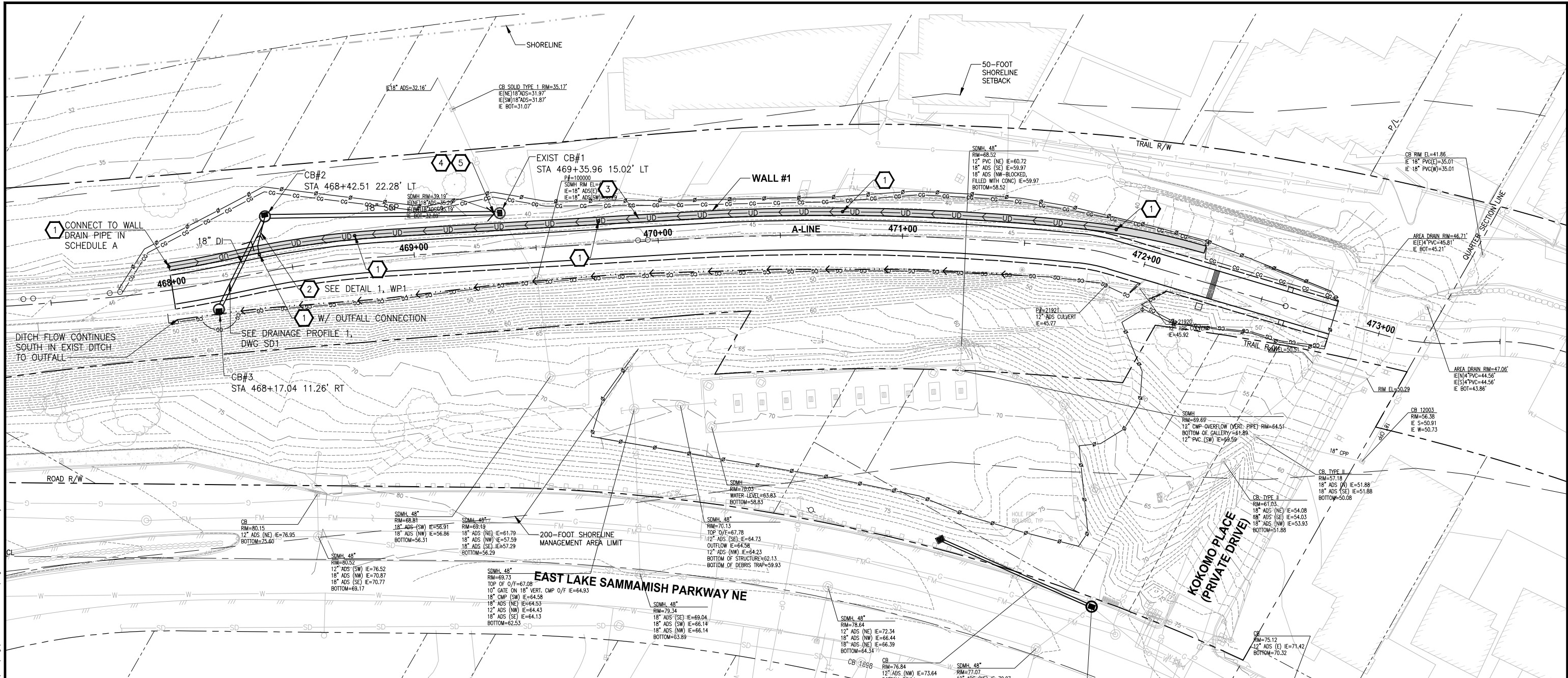


PATH: U:\P50\Projects\Clients\1521-075-ELST\985\Set\CAD\Phase 21\T03.Dwg
PLOTED BY: purgebut DATE: Monday, June 14, 2021 4:06:40 PM
LAYOUT: DR1



STORMWATER CONSTRUCTION NOTES:

- 1 STORM DRAIN CLEANOUT (SEE DWG SD1, DETAIL 1)
- 2 6-INCH Ø DRAIN PIPE @ 1.00% MINIMUM, CONNECT TO CB #2 (SCH 80 PVC UNDERNEATH WALL BLOCKS)
- 3 6-INCH Ø UNDERDRAIN PIPE (SEE DWG WP1 FOR PROFILE)
- 4 CONNECT TO EXIST DRAINAGE STRUCTURE
- 5 CLEAN EXIST DRAINAGE STRUCTURE

LEGEND:

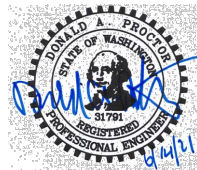
- RETAINING WALL
- SD DRAIN PIPE
- UD UNDERDRAIN PIPE
- GRADED DITCH
- STORM CLEANOUT

GENERAL NOTES:

- SEE DWG SD1 FOR PIPE AND STRUCTURE MATERIAL REQUIREMENTS AND ELEVATIONS.
- CONTRACTOR SHALL USE FULL LENGTH/UNCUT PIPES FOR ALL PIPE RUNS EXCEPT AT LAST UPHILL PIPE AT STRUCTURE.
- SEE DWG WP1 FOR UNDERDRAIN PIPE PROFILE AT WALL #1.
- SEE DWG SP1 FOR TREE PROTECTION REQUIREMENTS.



CONFORMED DRAWINGS



Parametrix
ENGINEERING · PLANNING · ENVIRONMENTAL SCIENCES

719 2ND AVENUE, SUITE 200 | SEATTLE, WA 98104
P 206.394.3700
WWW.PARAMETRIX.COM

PROJECT NAME
**KING COUNTY PARKS AND RECREATION
INGLEWOOD HILL ROAD
PARKING LOT - PHASE 1**
SAMMAMISH, WA

DRAINAGE PLAN

SHEET NO.
173 OF 213

DR1

CITY OF SAMMAMISH APPROVAL

City Engineer _____ Date _____

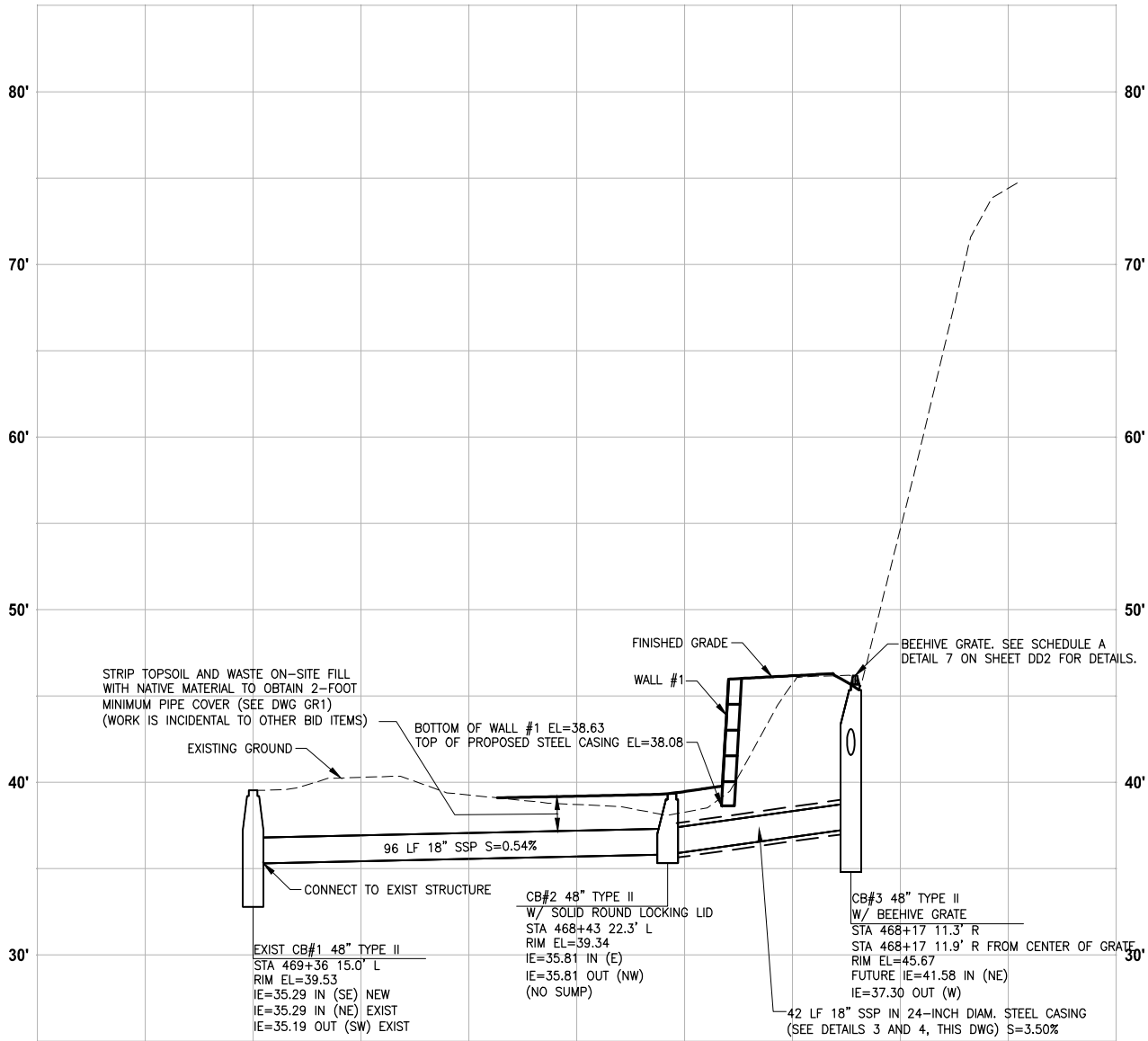
**CITY OF SAMMAMISH PUBLIC WORKS
DEVELOPMENT REVIEW**

These drawings have been reviewed for compliance with City of Sammamish Clearing and Grading and Stormwater requirements and also in accordance with the requirements as established in the Settlement Agreement between King County vs. City of Sammamish No. C17-0921 JCC and King County vs. City of Sammamish No. 17-2-29922-7 SEA and have been deemed ACCEPTABLE. The reviewer accepts no responsibility for any errors and/or omissions made by the preparer of these drawings.
17 February 2022



Know what's below.
Call before you dig.

PATH: U:\P50\Projects\Clients\1521-KingCo\554-1521-075-ELST\98Sect\CADD\Phase 21\T03.Dwg
LAYOUT: SD1
PLOTTED BY: purgebut DATE: Monday, June 14, 2021 4:07:47 PM



DRAINAGE PROFILE 1 - CB#1 TO CB#3

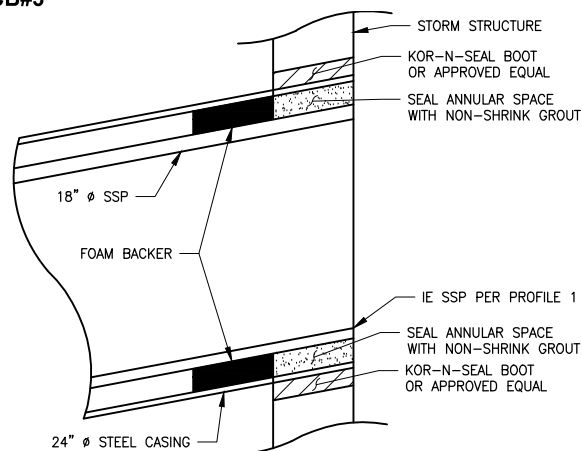
HORIZ: 1"=20'
VERT: 1"=5'

STORM PIPE ABBREVIATIONS:

SSP - STORM SEWER PIPE
CPEP - CORRUGATED POLYETHYLENE PIPE (EXISTING PIPES ONLY)
UDP - UNDER DRAIN PIPE

NOTES:

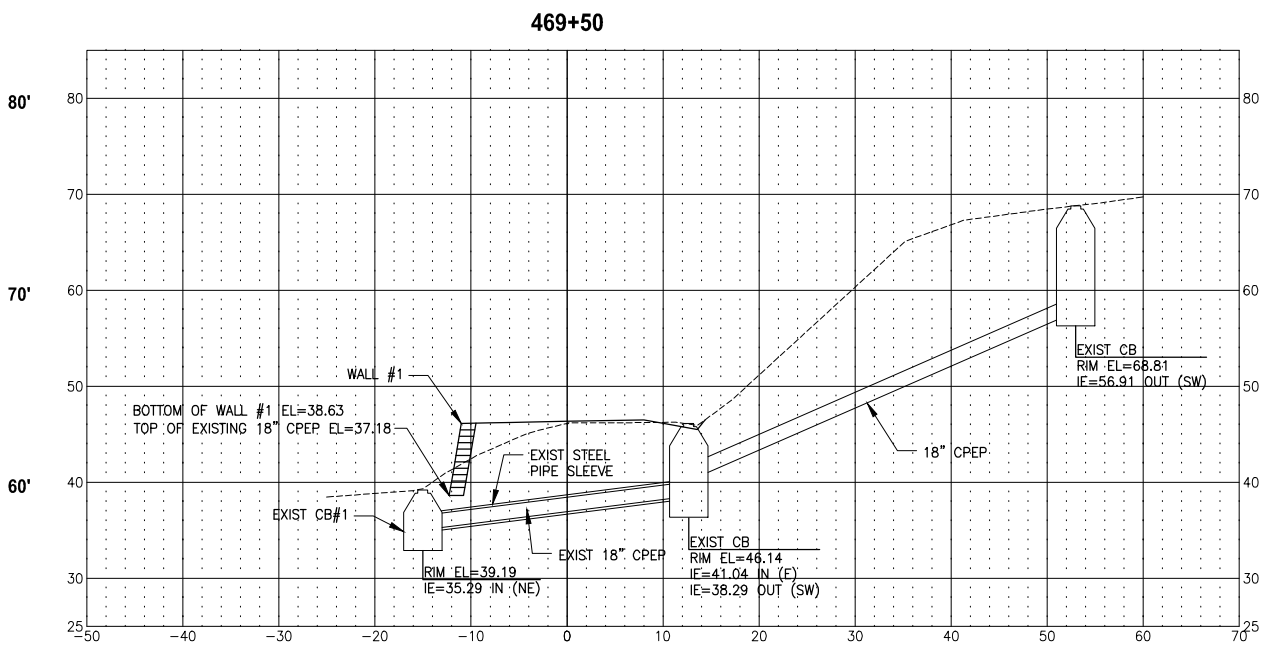
- ALL STORM SEWER PIPE SHALL BE POLYPROPYLENE, PER WSDOT 9-05.24.
- CONTRACTOR SHALL USE FULL LENGTH/UNCUT PIPES FOR ALL PIPE RUNS EXCEPT AT LAST UPHILL PIPE AT STRUCTURE.



STEEL CASING CATCH BASIN CONNECTION
DETAIL

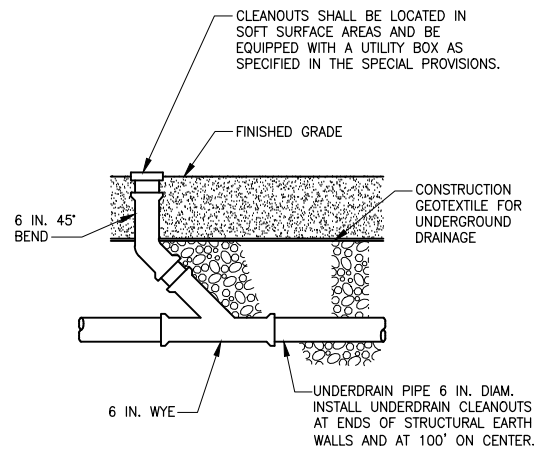
NO SCALE

CONFORMED DRAWINGS



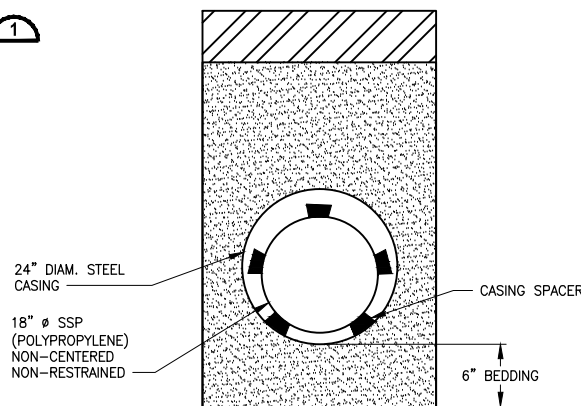
EXISTING STORM SYSTEM
SECTION

HORIZ: 1"=10'
VERT: 1"=10'



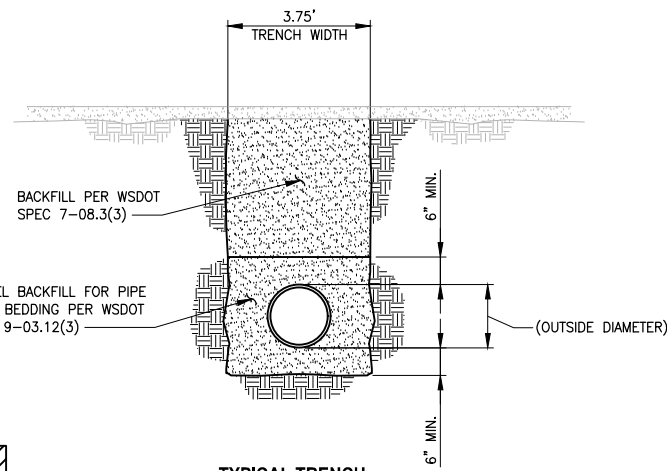
UNDERDRAIN PIPE CLEANOUT
DETAIL

NO SCALE



STEEL CASING
DETAIL

NO SCALE



TYPICAL TRENCH
DETAIL

NO SCALE

CITY OF SAMMAMISH APPROVAL	
City Engineer	Date

CITY OF SAMMAMISH PUBLIC WORKS
DEVELOPMENT REVIEW

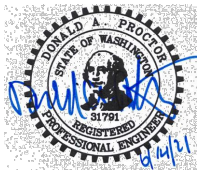
These drawings have been reviewed for compliance with City of Sammamish Clearing and Grading and Stormwater requirements and also in accordance with the requirements as established in the Settlement Agreement between King County vs. City of Sammamish No. C17-0921 JCC and King County vs. City of Sammamish No. 17-2-29922-7 SEA and have been deemed ACCEPTABLE. The reviewer accepts no responsibility for any errors and/or omissions made by the preparer of these drawings.

17 February 2022

REVISIONS	DATE	BY	DESIGNED
			R. MCCABE
			R. MCCABE
			R. PARKER
			D. PROCTOR

ONE INCH AT FULL SCALE.
IF NOT, SCALE ACCORDINGLY

FILE NAME
BL1521075P21T03SD-01
JOB No.
554-1521-075 P21T03
DATE
JUNE 2021



Parametrix
ENGINEERING · PLANNING · ENVIRONMENTAL SCIENCES

719 2ND AVENUE, SUITE 200 | SEATTLE, WA 98104
P 206.394.3700
WWW.PARAMETRIX.COM

PROJECT NAME
**KING COUNTY PARKS AND RECREATION
INGLEWOOD HILL ROAD
PARKING LOT - PHASE 1**
SAMMAMISH, WA

DRAINAGE PROFILES

SHEET NO.
174 OF 213

SD1