

# East Lake Sammamish Master Plan Trail, South Sammamish Segment B – Phase 2

Contract KC000365

Volume 3 of 3

Contract Plans

October 2021

**CONFORMED DRAWINGS**

## REVISION # 3

### Bid Schedule A

- 1) Drawings UT1 to UT 11, UD1 and UD2, WD 2 – Minor revisions to address Sammamish Plateau Water and Sewer District's additional review comments
- 2) Drawings SD 1 to SD 4, DD1 to DD2 – Revisions to address some constructability review comments.
- 3) Drawings LA to LA 10 – Revisions to address some of the landscaping restoration details.

### Bid Schedule C

- 1) Drawings UT1, UD1 and UD 2 – Revisions to address Sammamish Plateau Water and Sewer District's additional review comments.

### PLANNING DEPT. APPROVAL

BY: JSingh  
DATE: 02/09/2022

Note: Applicant is responsible for maintaining control of Erosion & Sediment during construction.

### CITY OF SAMMAMISH PUBLIC WORKS DEVELOPMENT REVIEW

These drawings have been reviewed for compliance with City of Sammamish Clearing and Grading and Stormwater requirements and also in accordance with the requirements as established in the Settlement Agreement between King County vs. City of Sammamish No. C17-0921 JCC and King County vs. City of Sammamish No. 17-2-29922-7 SEA and have been deemed ACCEPTABLE. The reviewer accepts no responsibility for any errors and/or omissions made by the preparer of these drawings.

17 February 2022

These drawings have been reviewed for compliance with City of Sammamish Clearing and Grading and Stormwater requirements and also in accordance with the requirements as established in the Settlement Agreement between King County vs. City of Sammamish No. C17-0921 JCC and King County vs. City of Sammamish No. 17-2-29922-7 SEA and have been deem ACCEPTABLE. The reviewers accepts no responsibility for any errors and/or omissions made by the preparer of these drawings.



King County

Department of Natural Resources and Parks  
Parks and Recreation Division

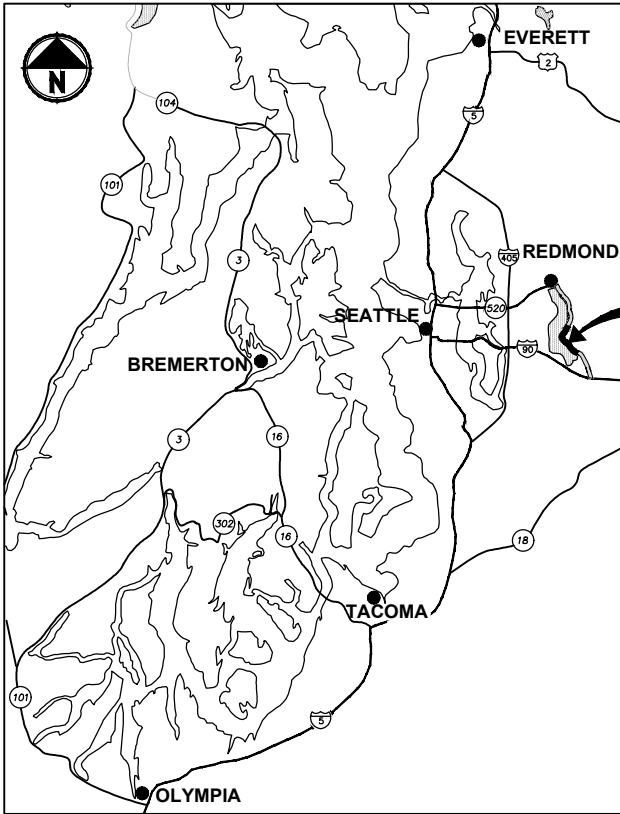
# East Lake Sammamish Master Plan Trail, South Sammamish Segment B - Phase 2

## Schedule A: Driveway 9 to Inglewood Hill Road

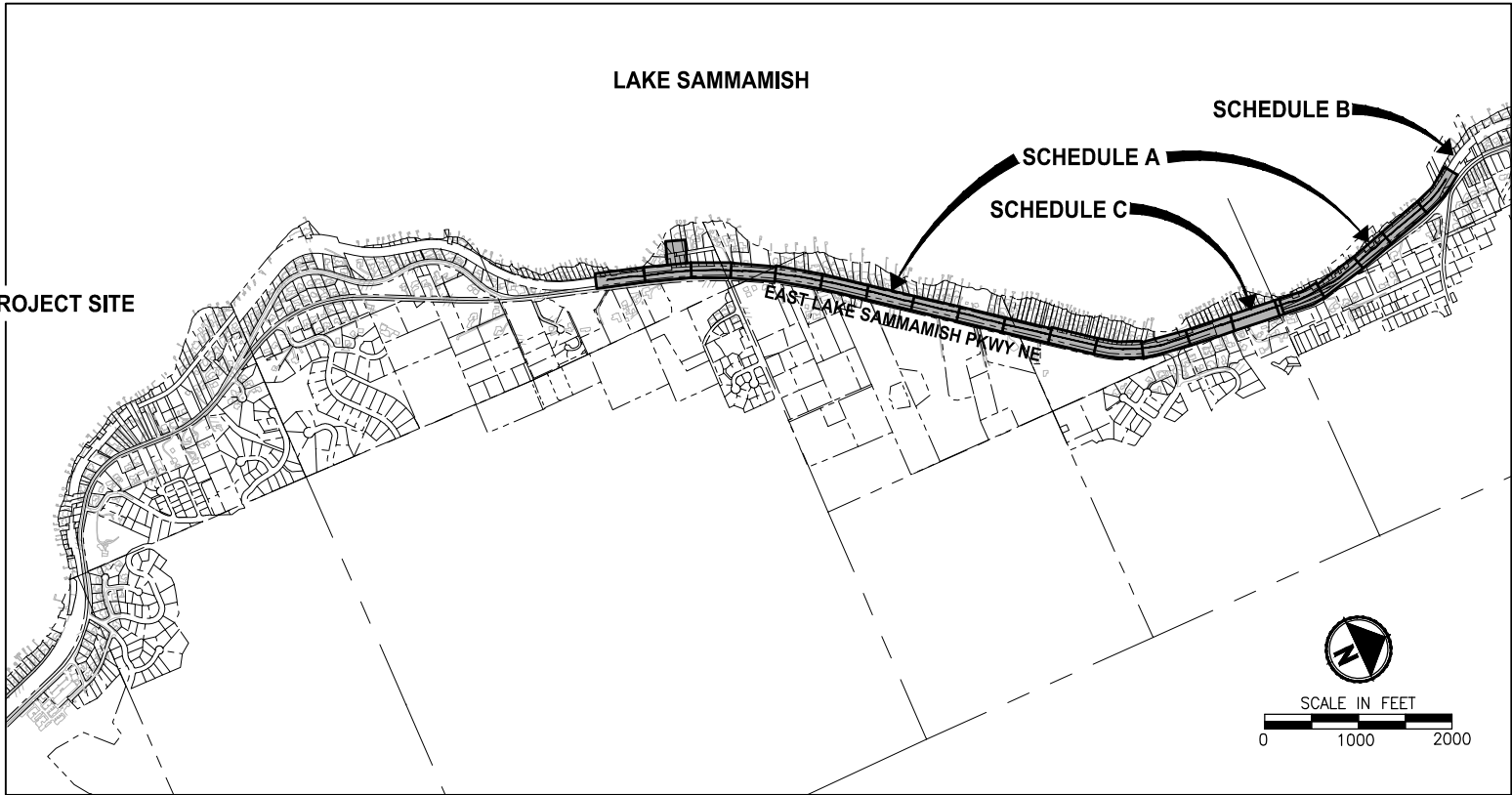
## Schedule B: Inglewood Hill Road Parking Lot - Phase 1

## Schedule C: George Davis Creek Culvert Replacements

### King County, Washington



LOCATION MAP  
NOT TO SCALE



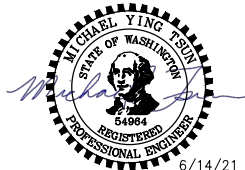
VICINITY MAP

#### MASTER INDEX TO DRAWINGS

SCHEDULE A	DRIVEWAY 9 TO INGLEWOOD HILL ROAD	SHEETS 2 TO 158
SCHEDULE B	INGLEWOOD HILL ROAD PARKING LOT - PHASE 1	SHEETS 159 TO 182
SCHEDULE C	GEORGE DAVIS CREEK CULVERT REPLACEMENTS	SHEETS 183 TO 213

NOTE:  
EACH SET OF DRAWINGS LISTED ARE SEPARATE DESIGN PACKAGES, AS SUCH, DETAIL AND SHEET REFERENCES WITHIN EACH DRAWING SET ARE INDEPENDENT FROM EACH OTHER.

CONFORMED DRAWINGS



**Parametrix**  
ENGINEERING · PLANNING · ENVIRONMENTAL SCIENCES

719 2ND AVENUE, SUITE 200 | SEATTLE, WA 98104  
P 206.394.3700  
WWW.PARAMETRIX.COM

PROJECT NAME  
**EAST LAKE SAMMAMISH  
MASTER PLAN TRAIL  
SOUTH SAMMAMISH SEGMENT B - PHASE 2**  
SAMMAMISH, WA

**CITY OF SAMMAMISH PUBLIC WORKS  
DEVELOPMENT REVIEW**  
These drawings have been reviewed for compliance with City of Sammamish Clearing and Grading and Stormwater requirements and also in accordance with the requirements as established in the Settlement Agreement between King County vs. City of Sammamish No. C17-0921 JCC and King County vs. City of Sammamish No. 17-2-29922-7 SEA and have been deemed **ACCEPTABLE**. The reviewer accepts no responsibility for any errors and/or omissions made by the preparer of these drawings.  
**17 February 2022**

CG2016-03470  
SSDP2016-00415

CITY OF SAMMAMISH APPROVAL	
City Engineer	Date
Community Development	Date

REVISIONS	DATE	BY	DESIGNED
			M. TSUN
			DRAWN
			B. PURGANAN
			CHECKED
			Y. HO
			APPROVED
			J. BAILEY

ONE INCH AT FULL SCALE.  
IF NOT, SCALE ACCORDINGLY  
FILE NAME  
BL1521075P19T03G-00  
JOB No.  
554-1521-075 P19 T03  
DATE  
JUNE 2021

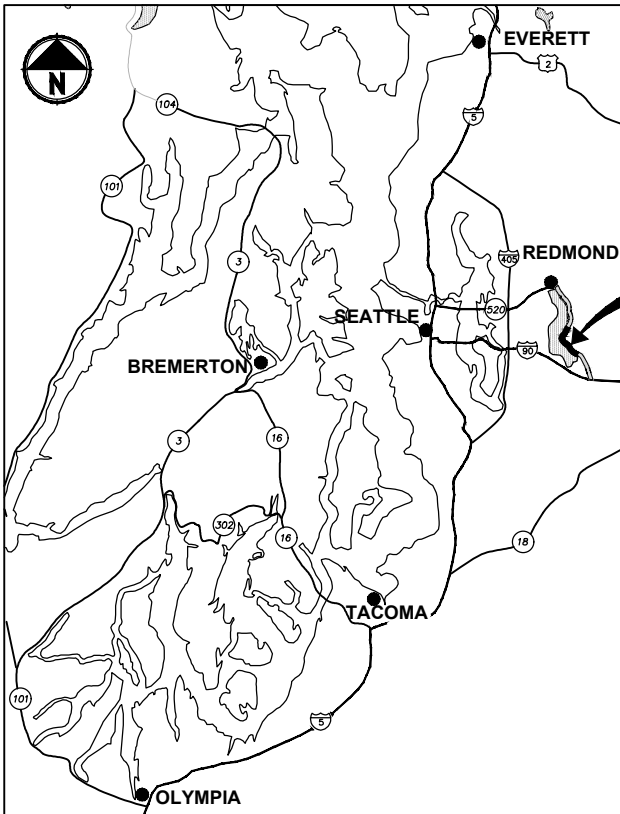
**SCHEDULE COVER SHEET**

SHEET NO.  
1 OF 213  
**G0**

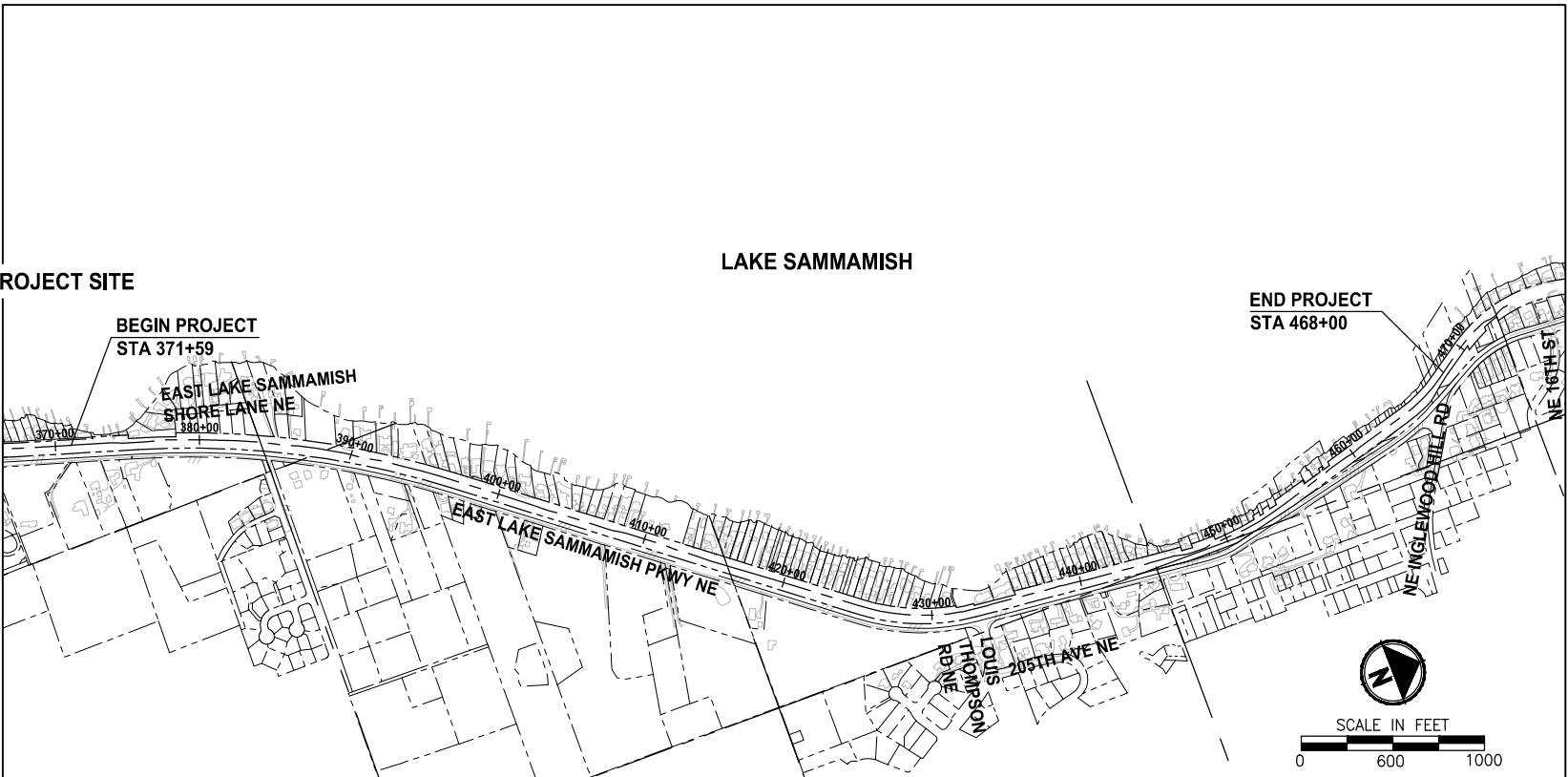
# East Lake Sammamish Master Plan Trail, South Sammamish Segment B - Phase 2

## Schedule A: Driveway 9 to Inglewood Hill Road

### King County, Washington



LOCATION MAP  
NOT TO SCALE



VICINITY MAP

**RIGHT OF WAY NOTE:**

RIGHT OF WAY LINES SHOWN ARE BASED ON KING COUNTY MAP VAULT SURVEY OF EAST LAKE SAMMAMISH TRAIL, MAP NUMBER 311-99, DATED AUGUST 8TH, 1998, WITH SUBSEQUENT CONVEYANCES AND EASEMENTS BEING UPDATED ACCORDING TO AUDITOR DOCUMENTS OF RECORD.

**PROPERTY INFORMATION:**

PARCEL NUMBERS: 2925069007 (11.13 ACRES)  
322506-9015 (13.79 ACRES)  
062406-9013 (15.19 ACRES)

**PROJECT & SITE INFORMATION:**

KING COUNTY PROPOSES TO DEVELOP AN ALTERNATIVE TRANSPORTATION CORRIDOR AND RECREATION TRAIL ALONG 3.5 MILES OF A FORMER RAILROAD CORRIDOR IN THE CITY OF SAMMAMISH, LOCATED BETWEEN SE 33RD ST AND INGLEWOOD HILL ROAD. A GRAVEL INTERIM TRAIL IS CURRENTLY IN OPERATION. SCHEDULE A SEGMENT INCLUDES 1.8 MILES OF THE TRAIL FROM DRIVEWAY 9 TO NE INGLEWOOD HILL ROAD.

DISTURBED AREA = 5.0 AC  
EXISTING IMPERVIOUS AREA = 0.5 AC  
PROPOSED IMPERVIOUS AREA = 3.1 AC  
VOLUME OF ESTIMATED FILL = 3,590 CY  
VOLUME OF ESTIMATED EXCAVATION = 4,110 CY

**WRITTEN DESCRIPTION OF THE PROJECT:**

THE EXISTING GRAVEL TRAIL WILL BE WIDENED TO 12 FEET AND PAVED WITH 2-FOOT GRAVEL SHOULDERS ON BOTH SIDES.

THE PROPOSED IMPROVEMENTS INCLUDE RETAINING WALLS, DRAINAGE IMPROVEMENTS, FENCE, SIGNS AND MITIGATION FOR IMPACTS TO WETLANDS AND WETLAND AND STREAM BUFFERS.

**EXISTING ZONE CLASSIFICATION:**

COMMUNITY FACILITIES CF-F

**EXISTING SHORELINE ENVIRONMENT DESIGNATION:**

CITY OF SAMMAMISH DESIGNATION: SHORELINE RESIDENTIAL

**GENERAL PURPOSE OF THIS PROJECT:**

TO DEVELOP AN ALTERNATIVE TRANSPORTATION CORRIDOR IN A FORMER RAILROAD CORRIDOR.

**CONTACT INFORMATION:**

APPLICANT/OWNER:  
KING COUNTY PARKS AND RECREATION DIVISION  
201 S. JACKSON, 7TH FLR  
SEATTLE, WA 98104  
(206) 724-1296  
CONTACT: GINA AULD

ENGINEER:  
PARAMETRIX  
719 2ND AVENUE  
SUITE 200  
SEATTLE, WA 98104  
(206) 394-3700  
CONTACT: YAMMIE HO, P.E.

UTILITY:  
ONE-CALL 1 (800) 424-5555

SAMMAMISH PLATEAU WATER AND SEWER DISTRICT  
(425) 295-3203  
CONTACT: KYLE WONG

COMCAST CABLE  
(425) 263-5348/(425) 319-4968  
CONTACT: JOSEPH FORDON

FRONTIER COMMUNICATIONS NW INC.  
(425) 261-6342/(425) 210-2870  
CONTACT: THOMAS PACEY

PUGET SOUND ENERGY (POWER AND POLE)  
(425) 417-9188  
CONTACT: DENNIS BOOTH

PUGET SOUND ENERGY (GAS)  
(425) 449-7410/(425) 463-6550  
CONTACT: JEANNE COLEMAN

EASTSIDE FIRE/RESCUE  
(425) 313-3203  
CONTACT: GREG TRYON

SURVEYOR:  
PARAMETRIX  
719 2ND AVENUE  
SUITE 200  
SEATTLE, WA 98104  
(206) 394-3700  
CONTACT: ROBERT PUSEY

ARBORIST:  
AMERICAN FOREST MANAGEMENT, INC  
11415 NE 128TH ST SUITE 110  
KIRKLAND, WA 98034  
(425) 820-3420  
CONTACT: BOB LAYTON

**CITY OF SAMMAMISH PUBLIC WORKS  
DEVELOPMENT REVIEW**

These drawings have been reviewed for compliance with City of Sammamish Clearing and Grading and Stormwater requirements and also in accordance with the requirements as established in the Settlement Agreement between King County vs. City of Sammamish No. C17-0921 JCC and King County vs. City of Sammamish No. 17-2-29922-7 SEA and have been deemed ACCEPTABLE. The reviewer accepts no responsibility for any errors and/or omissions made by the preparer of these drawings.

17 February 2022

CG2016-03470  
SSDP2016-00415

**CITY OF SAMMAMISH APPROVAL**

City Engineer

Date

Community Development

Date

CONFORMED DRAWINGS



**Parametrix**  
ENGINEERING · PLANNING · ENVIRONMENTAL SCIENCES

719 2ND AVENUE, SUITE 200 | SEATTLE, WA 98104  
P 206.394.3700  
WWW.PARAMETRIX.COM

PROJECT NAME

**EAST LAKE SAMMAMISH  
MASTER PLAN TRAIL  
SOUTH SAMMAMISH SEGMENT B - PHASE 2**  
SAMMAMISH, WA

**COVER SHEET**

SHEET NO.  
2 OF 213

**G1**



PATH: U:\PSO\Projects\Clients\1521-KingCo\554-1521-075-ELST\995\cs\CADD\Phase 19\T03\_Civil\DWG-Phase2\
 PLOTTED BY: purgubut DATE: Monday, June 14, 2021 3:57:19 PM
 LAYOUT: G2

ABBREVIATIONS:

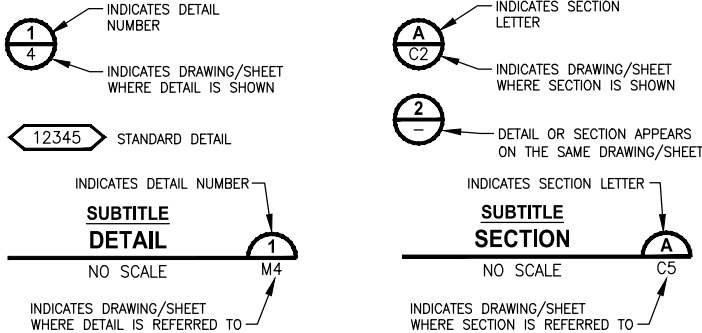
AC	ASBESTOS CEMENT PIPE	MIN	MINIMUM
ACP	ASPHALT CONCRETE PAVEMENT	MON	MONUMENT
ADS	ADVANCED DRAINAGE SYSTEMS	MPE	MEDIUM DENSITY POLYETHYLENE PIPE
APPROX	APPROXIMATE	N	NORTH, NORTHING
BOC	BACK OF CURB	N.I.C.	NOT IN CONTRACT
BTM	BOTTOM	NST	NOT IN STEEPER THAN
BOW	BOTTOM OF WALL	PC	POINT OF CURVE
BVCE	BEGIN VERTICAL CURVE ELEVATION	PE, PEP	POLYETHYLENE PIPE
BVCS	BEGIN VERTICAL CURVE STATION	PT	POINT OF TANGENT
CB	CATCH BASIN	P/L	PROPERTY LINE
C&G	CURB AND GUTTER	PRO	PROPOSED
C/L, CL	CENTERLINE	PUD	PUBLIC UTILITY DISTRICT
CO	CLEANOUT	PVC	POLYVINYL CHLORIDE PIPE
COM	COMMUNICATION	PVI	POINT OF VERTICAL INTERSECTION
CONC	CONCRETE	PWR	POWER
CORR	CORRUGATED	RCP	REINFORCED CONCRETE PIPE
COS	CITY OF SAMMAMISH	REINF	REINFORCED
CONST	CONSTRUCTION	ROW, R/W	RIGHT-OF-WAY
CMP	CORRUGATED METAL PIPE	RT	RIGHT
CP	CONCRETE PIPE	SD	STORM DRAIN
CSTC	CRUSHED SURFACING TOP COURSE	SDMH	STORMWATER MANHOLE
DIA	DIAMETER	SIM	SIMILAR
DI, DIP	DUCTILE IRON PIPE	SEW	STRUCTURAL EARTH RETAINING WALL
E	EAST, EASTING	SPECS	SPECIFICATIONS
EL	ELEVATION	SPWSD	SAMMAMISH PLATEAU WATER & SEWER DISTRICT
EOA	EDGE OF ASPHALT	SS	SANITARY SEWER
EVCE	END VERTICAL CURB ELEVATION	SSFM	SANITARY SEWER FORCE MAIN
EVCS	END VERTICAL CURB STATION	ST	STEEL
EOG	EDGE OF GRAVEL	STA	STATION
EOP	EDGE OF PAVEMENT	STD	STANDARD
EX, EXIST	EXISTING	TEL	TELEPHONE
FOC	FACE OF CURB	TESC	TEMPORARY EROSION AND SEDIMENT CONTROL
FL	FLANGE, FLOWLINE	TOW	TOP OF WALL
G	GAS	UD	UNDERDRAIN
GB	GRADE BREAK	TYP	TYPICAL
GT	GRAVEL TRENCH	W, WTR	WATER
HDPE	HIGH DENSITY POLYETHYLENE PIPE	WS	WATER SERVICE
HMA	HOT MIX ASPHALT	WSDOT	WASHINGTON STATE DEPARTMENT OF TRANSPORTATION
IE	INVERT ELEVATION	WWM	WELDED WIRE MESH
LF	LINEAR FEET		
LP	LOW POINT		
LT	LEFT		
ME	MATCH EXISTING		

INDEX TO DRAWINGS		
DWG NO.	SHT NO.	SHEET TITLE
GENERAL 1 2 3 4 5 6 7 8	G0	SCHEDULE COVER SHEET
	G1	COVER SHEET
	G2	ABBREVIATIONS AND SHEET LIST
	G3	SHEET INDEX
	G4	LEGEND
	G5	SURVEY CONTROL PLAN
	G6	SURVEY CONTROL PLAN
	G7	SURVEY CONTROL SCHEDULE
EXISTING CONDITIONS 9 10 11 12 13 14 15 16 17 18	EX1	EXISTING CONDITIONS PLAN
	EX2	EXISTING CONDITIONS PLAN
	EX3	EXISTING CONDITIONS PLAN
	EX4	EXISTING CONDITIONS PLAN
	EX5	EXISTING CONDITIONS PLAN
	EX6	EXISTING CONDITIONS PLAN
	EX7	EXISTING CONDITIONS PLAN
	EX8	EXISTING CONDITIONS PLAN
	EX9	EXISTING CONDITIONS PLAN
	EX10	EXISTING CONDITIONS PLAN
TYPICAL CROSS SECTIONS 19 20	CS1	TYPICAL CROSS SECTIONS
	CS2	TYPICAL CROSS SECTIONS
SITE PREPARATION 21 22 23 24 25 26 27 28 29 30	SP1	SITE PREPARATION PLAN
	SP2	SITE PREPARATION PLAN
	SP3	SITE PREPARATION PLAN
	SP4	SITE PREPARATION PLAN
	SP5	SITE PREPARATION PLAN
	SP6	SITE PREPARATION PLAN
	SP7	SITE PREPARATION PLAN
	SP8	SITE PREPARATION PLAN
	SP9	SITE PREPARATION PLAN
	SP10	SITE PREPARATION PLAN
TESC 31 32 33 34 35 36 37 38 39 40	TE1	TESC PLAN
	TE2	TESC PLAN
	TE3	TESC PLAN
	TE4	TESC PLAN
	TE5	TESC PLAN
	TE6	TESC PLAN
	TE7	TESC PLAN
	TE8	TESC PLAN
	TE9	TESC PLAN
	TE10	TESC PLAN
TESC DETAILS 41	TD1	TESC DETAILS
TRAIL PLAN & PROFILE 42 43 44 45 46 47 48 49 50 51 52 53 54 55 56 57 58 59 60 61 62	AL1	PLAN AND PROFILE
	AL2	PLAN AND PROFILE
	AL3	PLAN AND PROFILE
	AL4	PLAN AND PROFILE
	AL5	PLAN AND PROFILE
	AL6	PLAN AND PROFILE
	AL7	PLAN AND PROFILE
	AL8	PLAN AND PROFILE
	AL9	PLAN AND PROFILE
	AL10	PLAN AND PROFILE
	AL11	PLAN AND PROFILE
	AL12	PLAN AND PROFILE
	AL13	PLAN AND PROFILE
	AL14	PLAN AND PROFILE
	AL15	PLAN AND PROFILE
	AL16	PLAN AND PROFILE
	AL17	PLAN AND PROFILE
	AL18	PLAN AND PROFILE
	AL19	PLAN AND PROFILE
	AL20	PLAN AND PROFILE
	AL21	PLAN AND PROFILE

INDEX TO DRAWINGS (CONTINUED)		
DWG NO.	SHT NO.	SHEET TITLE
UTILITY AND DRAINAGE 63 64 65 66 67 68 69 70 71 72 73 74 75	UT1	UTILITY AND DRAINAGE PLAN
	UT2	UTILITY AND DRAINAGE PLAN
	UT3	UTILITY AND DRAINAGE PLAN
	UT4	UTILITY AND DRAINAGE PLAN
	UT5	UTILITY AND DRAINAGE PLAN
	UT6	UTILITY AND DRAINAGE PLAN
	UT7	UTILITY AND DRAINAGE PLAN
	UT8	UTILITY AND DRAINAGE PLAN
	UT9	UTILITY AND DRAINAGE PLAN
	UT10	UTILITY AND DRAINAGE PLAN
	UT11	UTILITY AND DRAINAGE PLAN
	UD1	UTILITY DETAILS
	UD2	UTILITY DETAILS
STORM DRAIN PROFILES 76 77 78 79	SD1	STORM DRAIN PROFILES AND SECTIONS
	SD2	STORM DRAIN PROFILES AND SECTIONS
	SD3	STORM DRAIN PROFILES AND SECTIONS
	SD4	STORM DRAIN PROFILES AND SECTIONS
DRAINAGE DETAILS 80 81	DD1	DRAINAGE DETAILS
	DD2	DRAINAGE DETAILS
FISH PASSAGE CULVERTS 82 83 84 85 86 87 88 89 90 91 92 93	FP1	FISH PASSAGE CULVERTS – PINE LAKE CREEK
	FP2	FISH PASSAGE CULVERTS – PINE LAKE CREEK
	FP3	FISH PASSAGE CULVERTS – PINE LAKE CREEK
	FP4	FISH PASSAGE CULVERTS – STREAM 0155
	FP5	FISH PASSAGE CULVERTS – STREAM 0155
	FP6	FISH PASSAGE CULVERTS – STREAM 0155
	FP7	FISH PASSAGE CULVERTS – EBRIGHT CREEK
	FP8	FISH PASSAGE CULVERTS – EBRIGHT CREEK
	FP9	FISH PASSAGE CULVERTS – EBRIGHT CREEK
	FP10	FISH PASSAGE CULVERTS – STREAM 0143L
	FP11	FISH PASSAGE CULVERTS – STREAM 0143L
	FP12	FISH PASSAGE CULVERTS – STREAM 0143L
DRIVEWAY PLAN AND PROFILE 94 95 96 97 98 99 100 101 102 103 104 105 106 107 108 109	DP1	DRIVEWAY PLAN AND PROFILE
	DP2	DRIVEWAY PLAN AND PROFILE
	DP3	DRIVEWAY PLAN AND PROFILE
	DP4	DRIVEWAY PLAN AND PROFILE
	DP5	DRIVEWAY PLAN AND PROFILE
	DP6	DRIVEWAY PLAN AND PROFILE
	DP7	DRIVEWAY PLAN AND PROFILE
	DP8	DRIVEWAY PLAN AND PROFILE
	DP9	DRIVEWAY PLAN AND PROFILE
	DP10	DRIVEWAY PLAN AND PROFILE
	DP11	DRIVEWAY PLAN AND PROFILE
	DP12	DRIVEWAY PLAN AND PROFILE
	DP13	DRIVEWAY PLAN AND PROFILE
	DP14	DRIVEWAY PLAN AND PROFILE
	DP15	DRIVEWAY PLAN AND PROFILE
	DP16	DRIVEWAY PLAN AND PROFILE
WALL PROFILES 110 111 112 113 114	WP1	WALL PROFILES
	WP2	WALL PROFILES
	WP3	WALL PROFILES
	WP4	WALL PROFILES
	WP5	WALL PROFILES
WALL DETAILS 115 116 117	WD1	WALL DETAILS
	WD2	WALL DETAILS
	WD3	WALL SCHEDULE
STRUCTURE 118 119 120	S1	CIP CONCRETE STAIR DETAILS
	S2	CIP CONCRETE STAIR DETAILS
	S3	CIP CONCRETE STAIR DETAILS

INDEX TO DRAWINGS (CONTINUED)		
DWG NO.	SHT NO.	SHEET TITLE
PAVEMENT MARKING & SIGNING 121 122 123 124 125 126 127 128 129 130 131	PS1	PAVEMENT MARKING AND SIGNING PLAN
	PS2	PAVEMENT MARKING AND SIGNING PLAN
	PS3	PAVEMENT MARKING AND SIGNING PLAN
	PS4	PAVEMENT MARKING AND SIGNING PLAN
	PS5	PAVEMENT MARKING AND SIGNING PLAN
	PS6	PAVEMENT MARKING AND SIGNING PLAN
	PS7	PAVEMENT MARKING AND SIGNING PLAN
	PS8	PAVEMENT MARKING AND SIGNING PLAN
	PS9	PAVEMENT MARKING AND SIGNING PLAN
	PS10	PAVEMENT MARKING AND SIGNING PLAN
	PS11	SIGN SCHEDULE
MISCELLANEOUS DETAILS 132 133 134 135 136 137 138 139 140	MD1	MISCELLANEOUS DETAILS
	MD2	MISCELLANEOUS DETAILS
	MD3	MISCELLANEOUS DETAILS
	MD4	MISCELLANEOUS DETAILS
	MD5	MISCELLANEOUS DETAILS
	MD6	MISCELLANEOUS DETAILS
	MD7	MISCELLANEOUS DETAILS
	MD8	MISCELLANEOUS DETAILS
	MD9	MISCELLANEOUS DETAILS
LANDSCAPE 141 142 143 144 145 146 147 148 149 150 151 152	LA1	LANDSCAPE PLAN
	LA2	LANDSCAPE PLAN
	LA3	LANDSCAPE PLAN
	LA4	LANDSCAPE PLAN
	LA5	LANDSCAPE PLAN
	LA6	LANDSCAPE PLAN
	LA7	LANDSCAPE PLAN
	LA8	LANDSCAPE PLAN
	LA9	LANDSCAPE PLAN
	LA10	LANDSCAPE PLAN
	LA11	LANDSCAPE PLAN
	LA12	LANDSCAPE PLAN
MITIGATION DETAILS AND NOTES 153 154 155 156 157 158	LD1	PLANTING DETAILS
	LD2	PLANTING DETAILS
	LD3	PLANTING SCHEDULE
	LD4	MITIGATION NOTES
	LD5	MITIGATION NOTES
	LD6	MITIGATION NOTES

DETAIL AND SECTION DESIGNATION



CITY OF SAMMAMISH PUBLIC WORKS  
DEVELOPMENT REVIEW

These drawings have been reviewed for compliance with City of Sammamish Clearing and Grading and Stormwater requirements and also in accordance with the requirements as established in the Settlement Agreement between King County vs. City of Sammamish No. C17-0921 JCC and King County vs. City of Sammamish No. 17-2-29922-7 SEA and have been deemed ACCEPTABLE. The reviewer accepts no responsibility for any errors and/or omissions made by the preparer of these drawings.  
17 February 2022

CITY OF SAMMAMISH APPROVAL

City Engineer

Community Development

Date

Date

CONFORMED DRAWINGS



REVISIONS	DATE	BY	DESIGNED
			M. TSUN
			B. PURGANAN
			Y. HO
			J. BAILEY

ONE INCH AT FULL SCALE. IF NOT, SCALE ACCORDINGLY
FILE NAME BL1521075P19T03G-02
JOB No. 554-1521-075 P19 T03
DATE JUNE 2021

Parametrix

ENGINEERING · PLANNING · ENVIRONMENTAL SCIENCES

719 2ND AVENUE, SUITE 200 | SEATTLE, WA 98104

P 206.394.3700

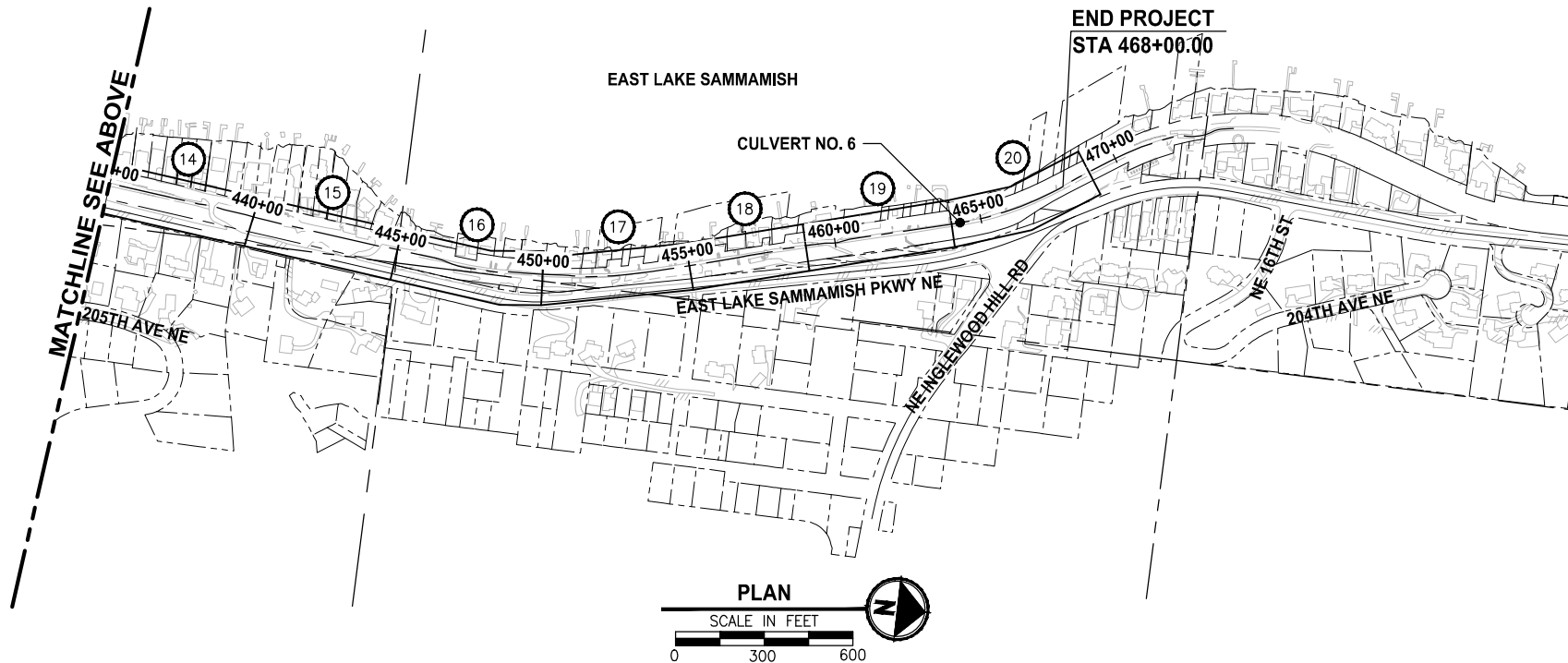
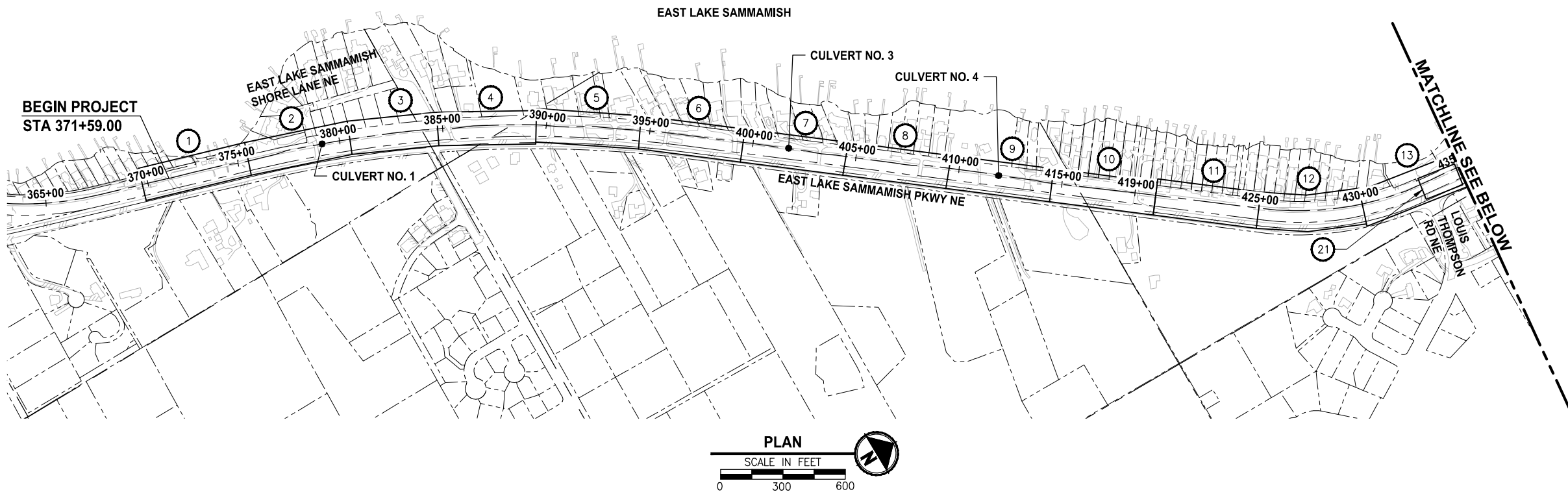
WWW.PARAMETRIX.COM

PROJECT NAME
EAST LAKE SAMMAMISH MASTER PLAN TRAIL SOUTH SAMMAMISH SEGMENT B - PHASE 2
SAMMAMISH, WA

ABBREVIATIONS AND SHEET LIST

SHEET NO. 3 OF 213
G2

U:\PSO\Projects\Clients\1521-KingCo\554-1521-075-ELST\995\cadd\Phase 19 T03 Civil\Draw-Phase2\ LAYOUT: G3 PLOTTED BY: purgubut DATE: Monday, June 14, 2021 3:57:33 PM



CONFORMED DRAWINGS



**Parametrix**  
ENGINEERING · PLANNING · ENVIRONMENTAL SCIENCES

719 2ND AVENUE, SUITE 200 | SEATTLE, WA 98104  
P 206.394.3700  
WWW.PARAMETRIX.COM

PROJECT NAME

**EAST LAKE SAMMAMISH  
MASTER PLAN TRAIL  
SOUTH SAMMAMISH SEGMENT B - PHASE 2**

SAMMAMISH, WA

**CITY OF SAMMAMISH PUBLIC WORKS  
DEVELOPMENT REVIEW**

These drawings have been reviewed for compliance with City of Sammamish Clearing and Grading and Stormwater requirements and also in accordance with the requirements as established in the Settlement Agreement between King County vs. City of Sammamish No. C17-0921 JCC and King County vs. City of Sammamish No. 17-2-29922-7 SEA and have been deemed **ACCEPTABLE**. The reviewer accepts no responsibility for any errors and/or omissions made by the preparer of these drawings.

**17 February 2022**

CITY OF SAMMAMISH APPROVAL	
City Engineer	Date
Community Development	Date

SHEET INDEX TABLE

(X)	EXISTING CONDITIONS PLAN	SITE PREPARATION PLAN	PLAN AND PROFILE	UTILITY AND DRAINAGE PLAN
1	EX1	SP1	AL1	UT1
2	EX1	SP1	AL2	UT1
3	EX2	SP2	AL3	UT2
4	EX2	SP2	AL4	UT2
5	EX3	SP3	AL5	UT3
6	EX3	SP3	AL6	UT3
7	EX4	SP4	AL7	UT4
8	EX4	SP4	AL8	UT4
9	EX5	SP5	AL9	UT5
10	EX5	SP5	AL10	UT5
11	EX6	SP6	AL11	UT6
12	EX6	SP6	AL12	UT6
13	EX7	SP7	AL13	UT7
14	EX7	SP7	AL14	UT8
15	EX8	SP8	AL15	UT8
16	EX8	SP8	AL16	UT9
17	EX9	SP9	AL17	UT9
18	EX9	SP9	AL18	UT10
19	EX10	SP10	AL19	UT10
20	EX10	SP10	AL20	UT11
21	-	-	AL21	-

REVISIONS	DATE	BY	DESIGNED
			M. TSUN
			DRAWN
			B. PURGANAN
			CHECKED
			Y. HO
			APPROVED
			J. BAILEY

ONE INCH AT FULL SCALE.  
IF NOT, SCALE ACCORDINGLY

FILE NAME  
BL1521075P19T03G-03

JOB No.  
554-1521-075 P19 T03

DATE  
JUNE 2021

SHEET INDEX

SHEET NO.  
4 OF 213

G3

PATH: U:\PSO\Projects\Clients\1521-KingCo\554-1521-075-ELST\995\cs\CADD\Phase 19\T03\_Civil\Draw-Phase2\ PLOTTED BY: purgubut DATE: Monday, June 14, 2021 3:57:43 PM LAYOUT: G4

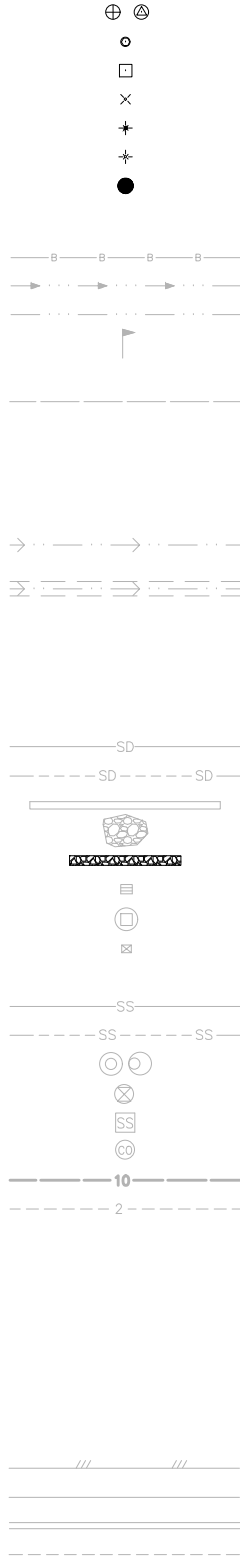
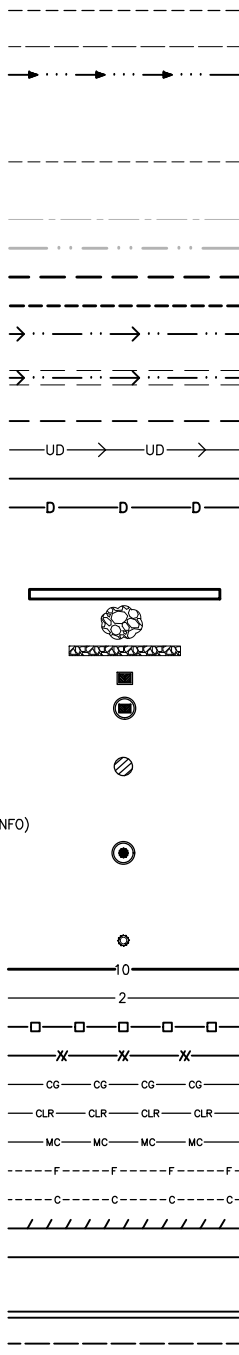
LEGEND

DESCRIPTION

PROPOSED

EXISTING

RIGHT OF WAY  
PROPERTY LINE  
RR LEASE LINE  
SECTION LINE  
QUARTER SECTION LINE  
FOUND MONUMENTS  
REBAR & CAP  
HUB & TACK  
PK NAIL  
FOUND MAG NAIL  
SET MAG NAIL  
PROPERTY CORNER  
EASEMENT LINE/  
DRAINAGE CONVEYANCE AREA  
STREAM BUFFER  
STREAM  
EDGE OF WATER  
WETLAND FLAG  
WETLAND BUFFER  
ORDINARY HIGH WATER MARK  
FLOODWAY BOUNDARY  
SHORELINE  
50' SHORELINE SETBACK  
200' SHORELINE SETBACK  
DITCH  
JURISDICTIONAL DITCH  
CENTERLINE & EDGES  
TEMPORARY EXCAVATION LIMIT  
UNDERDRAIN TRENCH  
SOLID WALL PVC  
TEMPORARY DRAIN PIPE  
STORM DRAIN  
STORM DRAIN (PER RECORD INFO)  
CULVERT/STORM DRAIN PIPE  
QUARRY SPALL/RIP RAP  
INFILTRATION TRENCH  
CATCH BASIN, TYPE 1  
CATCH BASIN, TYPE 2  
CATCH BASIN W/ SOLID LID  
INLET PROTECTION  
SANITARY SEWER LINE  
SANITARY SEWER LINE (PER RECORD INFO)  
SANITARY SEWER MANHOLE  
SANITARY SEWER VALVE  
SANITARY SEWER VAULT  
CLEANOUT  
CONTOURS MAJOR  
CONTOURS MINOR  
HIGH VISIBILITY SILT FENCE  
HIGH VISIBILITY FENCE  
CLEARING AND GRUBBING LIMITS  
CLEARING LIMITS  
MITIGATION CLEARING  
FILL LINE  
CUT LINE  
SAWCUT  
ASPHALT EDGE  
CONCRETE LINE  
CURB AND GUTTER  
EDGE OF GRAVEL



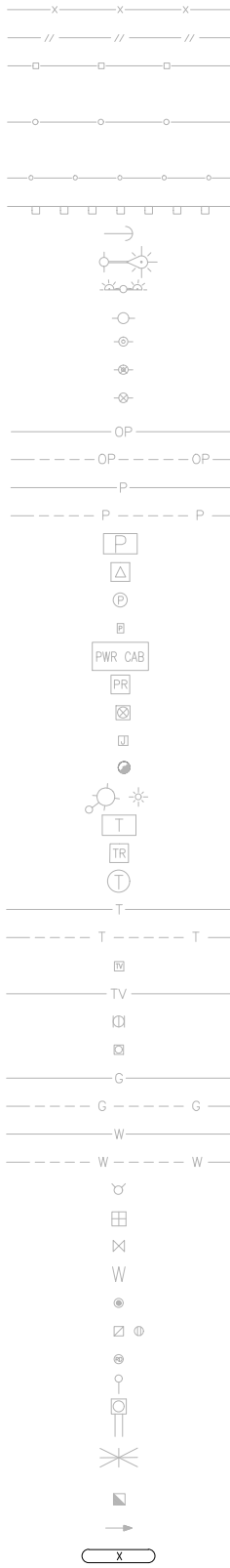
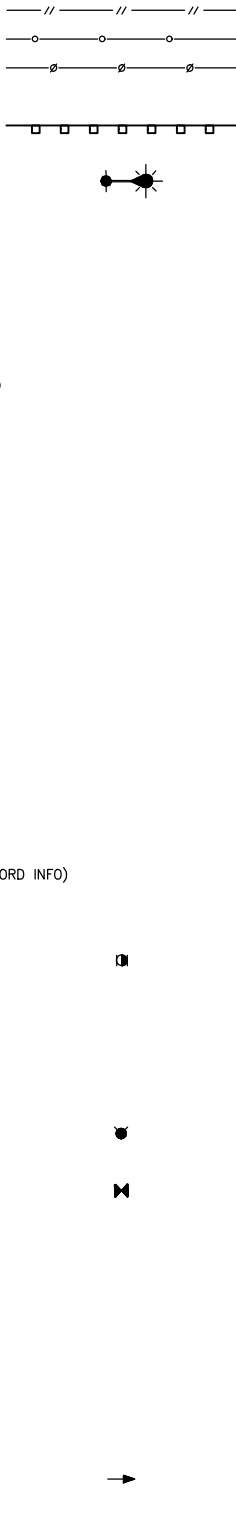
LEGEND

DESCRIPTION

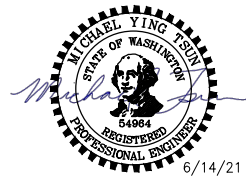
PROPOSED

EXISTING

BARBWIRE FENCE  
SPLIT RAIL FENCE  
BOARD FENCE  
TWO-RAIL FENCE  
CHAIN LINK FENCE  
TEMPORARY SAFETY FENCE  
HOG WIRE FENCE  
WOOD GUARDRAIL  
GUY ANCHOR  
POWER POLE WITH LIGHT  
FLOOD LIGHT  
UTILITY POLE  
PP W/ UG DROP  
PP W/ UG DROP & XMFR  
PP W/ XMFR  
OVERHEAD POWER AND/OR TELECOM  
OVERHEAD POWER (PER RECORD INFO)  
POWER  
POWER (PER RECORD INFO)  
POWER VAULT  
POWER TRANSFORMER  
POWER MANHOLE  
POWER HANDHOLE  
POWER CABINET  
POWER RISER  
POWER METER  
SOLID LID J-BOX  
STAND PIPE / HOSE BIB  
LUMINAIRE  
TELEPHONE VAULT  
TELEPHONE RISER  
TELEPHONE MANHOLE  
TELEPHONE/COMMUNICATION  
TELEPHONE/COMMUNICATION (PER RECORD INFO)  
TV RISER  
TV  
GAS VALVE  
GAS METER  
GAS  
GAS (PER RECORD INFO)  
WATER LINE  
WATER LINE (PER RECORD INFO)  
FIRE HYDRANT  
WATER METER  
WATER VALVE  
WATER VAULT  
MONITORING WELL OR ARTESIAN WELL  
AREA DRAIN  
ROOF DRAIN  
WATER BLOW OFF VALVE  
WATER POST INDICATOR  
SPRINKLER HEAD ROT=90  
IRRIGATION CONTROL VALVE  
FLOW DIRECTION  
PROPERTY PARCEL NUMBER



CONFORMED DRAWINGS



ONE INCH AT FULL SCALE.  
IF NOT, SCALE ACCORDINGLY  
FILE NAME  
BL1521075P19T03G-04  
JOB No.  
554-1521-075 P19 T03  
DATE  
JUNE 2021

REVISIONS	DATE	BY	DESIGNED
			M. TSUN
			DRAWN B. PURGANAN
			CHECKED Y. HO
			APPROVED J. BAILEY

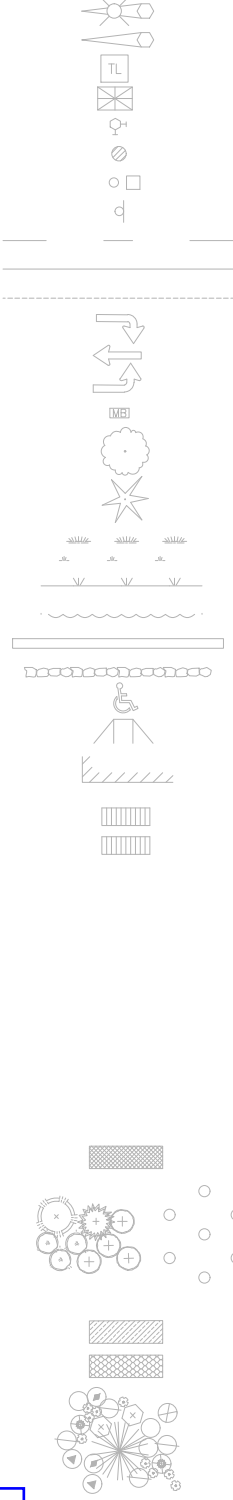
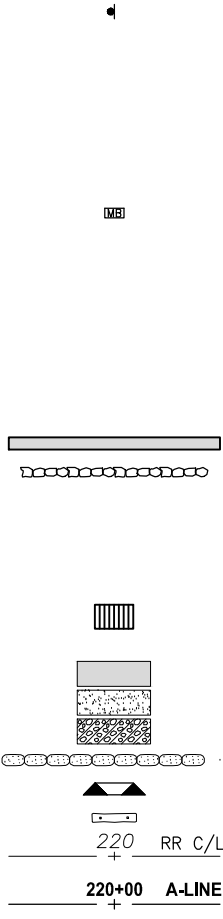
LEGEND

DESCRIPTION

PROPOSED

EXISTING

TRAFFIC SIGNAL POLE W/ LAMP  
TRAFFIC SIGNAL POLE  
TRAFFIC CONTROL LOOP (SQ)  
TRAFFIC CONTROL CABINET  
PEDESTRIAN POLE  
SAMPLE PLOT  
SURFACE POST  
SIGN  
SKIP LANE LINE  
SOLID LANE LINE  
FOG LINE  
LTO ARROW  
STO ARROW  
RTO ARROW  
MAILBOX  
DECIDUOUS TREE  
CONIFEROUS TREE  
WETLAND SYMBOL  
WETLAND BOUNDARY  
VEGETATION  
STRUCTURAL EARTH WALL  
ROCK WALL  
HANDICAPPED SYMBOL  
WHEELCHAIR RAMP  
BUILDING LINE  
CONCRETE STAIR LINE  
WOOD STAIRWAY  
REMOVE ASPHALT  
PATTERNED CONCRETE INTERSECTION  
SLOPE PROTECTION  
SANDBAG DAM  
CHECK DAM  
WATTLE CHECK DAM  
FORMER RAILROAD CENTERLINE  
CONSTRUCTION CENTERLINE  
PREVIOUSLY PLANTED AREA - LOW SHRUB  
PREVIOUSLY PLANTED AREA - TREES  
WORK BY OTHERS - RIPARIAN RESTORATION AREA  
WORK BY OTHERS - EMERGENT/BACKWATER RESTORATION AREA  
WORK BY OTHERS - TREES AND SHRUBS



CITY OF SAMMAMISH PUBLIC WORKS  
DEVELOPMENT REVIEW  
These drawings have been reviewed for compliance with City of Sammamish Clearing and Grading and Stormwater requirements and also in accordance with the requirements as established in the Settlement Agreement between King County vs. City of Sammamish No. C17-0921 JCC and King County vs. City of Sammamish No. 17-2-29922-7 SEA and have been deemed ACCEPTABLE. The reviewer accepts no responsibility for any errors and/or omissions made by the preparer of these drawings.  
17 February 2022

CITY OF SAMMAMISH APPROVAL	
City Engineer	Date
Community Development	Date

LEGEND

SHEET NO.  
5 OF 213  
G4

PROJECT NAME  
EAST LAKE SAMMAMISH  
MASTER PLAN TRAIL  
SOUTH SAMMAMISH SEGMENT B - PHASE 2  
SAMMAMISH, WA