

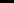


**CITY OF SAMMAMISH PUBLIC WORKS
DEVELOPMENT REVIEW**

These drawings have been reviewed for compliance with City of Sammamish Clearing and Grading and Stormwater requirements and also in accordance with the requirements as established in the Settlement Agreement between King County vs. City of Sammamish No. C17-0921 JCC and King County vs. City of Sammamish No. 17-2-29922-7 SEA and have been deemed **ACCEPTABLE**. The reviewer accepts no responsibility for any errors and/or omissions made by the preparer of these drawings.

17 February 2022

CITY OF SAMMAMISH APPROVAL	
City Engineer _____	Date _____
Community Development _____	Date _____

	REVISIONS	DATE	BY	DESIGNED R. PUSEY
				DRAWN B. PURGANAN
				CHECKED Y. HO
				APPROVED J. BAILEY

ONE INCH AT FULL SCALE.
IF NOT, SCALE ACCORDINGLY

FILE NAME
BL1521075P19T03G-05
JOB No.
554-1521-075 P19 T03
DATE
JUNE 2021



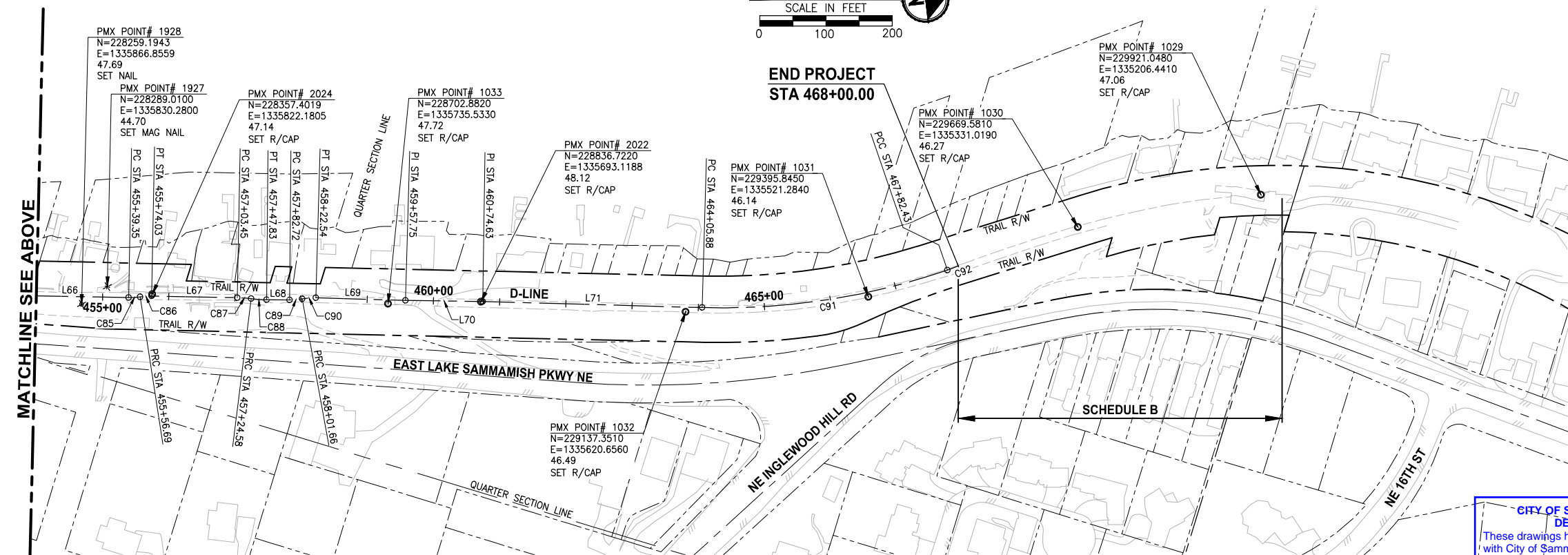
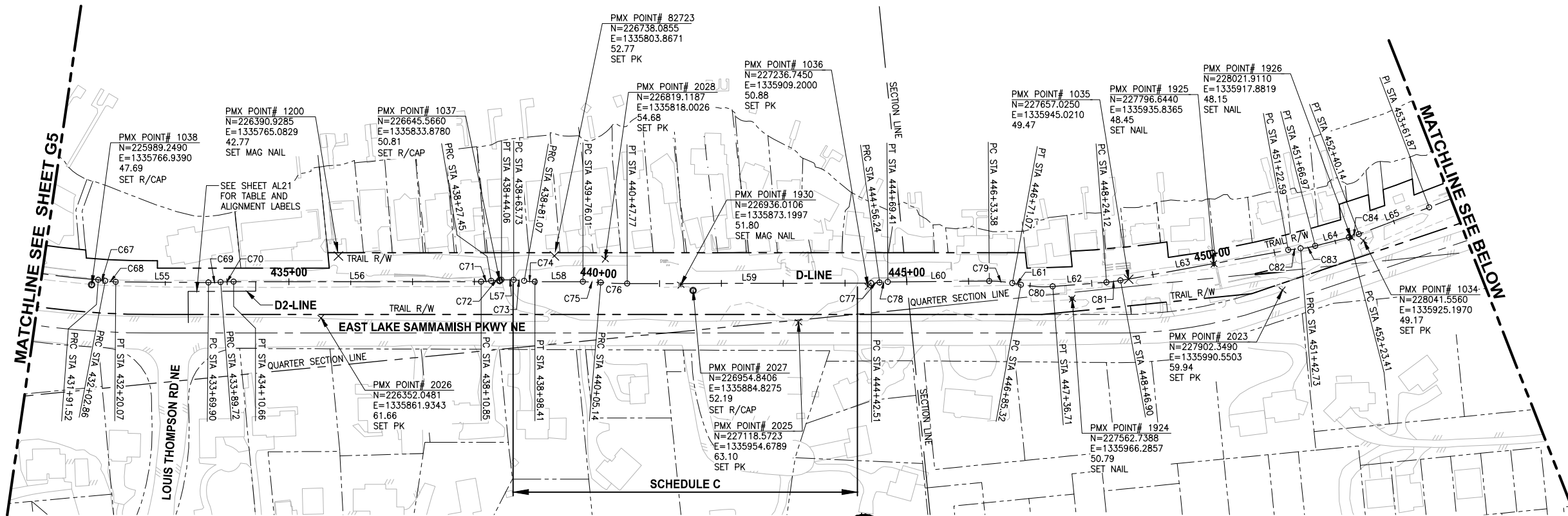
PROJECT NAME

**EAST LAKE SAMMAMISH
MASTER PLAN TRAIL
SOUTH SAMMAMISH SEGMENT B - PHASE 2**

SAMMAMISH, WA

SURVEY CONTROL PLAN

U:\PSO\Projects\Clients\1521-KingCo\554-1521-075-ELST\995\cadd\Phase 19\T03_Civil\DWG-Phase2\ PLOTTED BY: purgubut DATE: Monday, June 14, 2021 3:58:17 PM LAYOUT: G6



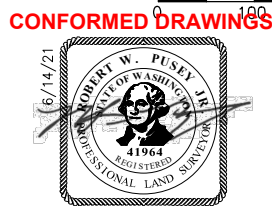
- SURVEY NOTES:**
- HORIZONTAL DATUM: NAD83 (CORS).
 - RTK CORRECTIONS OBTAINED FROM NGS CORS ID POINT "SEAT" ON OCTOBER 3, 2007.
 - VERTICAL DATUM: NAVD88.
 - WSDOT SITE BENCHMARKS HELD FOR THIS SURVEY ARE NOS. 2355, 6762, 6294, AND 617.
 - METHODOLOGY: FIELD MEASUREMENTS FOR THIS SURVEY WERE PERFORMED USING TRIMBLE 5800 RTK WITH CELL PHONE AND LIECA TCRA 1103 FULL ROBOTIC 3 SECOND TOTAL STATION IN CONFORMANCE WITH ACCEPTED SURVEY STANDARDS AS SPECIFIED BY WAC 332-130 FOR LINEAR AND ANGULAR CLOSURE.
 - THE RIGHT-OF-WAY DIMENSIONS SHOWN WERE PROVIDED BY KING COUNTY SURVEY DATED 1998 AND DO NOT REPRESENT A BOUNDARY SURVEY PERFORMED BY PARAMETRIX, UNLESS OTHERWISE NOTED ON EX SHEETS.

CITY OF SAMMAMISH PUBLIC WORKS DEVELOPMENT REVIEW
These drawings have been reviewed for compliance with City of Sammamish Clearing and Grading and Stormwater requirements and also in accordance with the requirements as established in the Settlement Agreement between King County vs. City of Sammamish No. C17-0921 JCC and King County vs. City of Sammamish No. 17-2-29922-7 SEA and have been deemed ACCEPTABLE. The reviewer accepts no responsibility for any errors and/or omissions made by the preparer of these drawings.
17 February 2022

CITY OF SAMMAMISH APPROVAL	
City Engineer	Date
Community Development	Date

REVISIONS	DATE	BY	DESIGNED
			R. PUSEY
			B. PURGANAN
			Y. HO
			J. BAILEY

ONE INCH AT FULL SCALE.
IF NOT, SCALE ACCORDINGLY
FILE NAME
BL1521075P19T03G-05
JOB No.
554-1521-075 P19 T03
DATE
JUNE 2021



Parametrix
ENGINEERING · PLANNING · ENVIRONMENTAL SCIENCES
719 2ND AVENUE, SUITE 200 | SEATTLE, WA 98104
P 206.394.3700
WWW.PARAMETRIX.COM

PROJECT NAME
**EAST LAKE SAMMAMISH
MASTER PLAN TRAIL
SOUTH SAMMAMISH SEGMENT B - PHASE 2**
SAMMAMISH, WA

SURVEY CONTROL PLAN

SHEET NO.
7 OF 213
G6

PATH: U:\PSO\Projects\Clients\1521-KingCo\554-1521-075-ELST\995\cadd\CADD\Phase 19\T03_Civil\DWG-Phase2\ PLOTTED BY: purgabut DATE: Monday, June 14, 2021 3:58:21 PM LAYOUT: G7

C-LINE CURVE TABLE							
CURVE	LENGTH	RADIUS	DELTA	BEGIN EASTING	BEGIN NORTHING	END EASTING	END NORTHING
C40	68.38	450.00	8°42'21"	1332718.55	221198.55	1332744.02	221261.93
C41	26.95	200.00	7°43'16"	1332744.02	221261.93	1332754.28	221286.83
C42	32.52	200.00	9°18'57"	1332803.81	221434.70	1332811.59	221466.23
C43	89.32	450.00	11°22'21"	1332811.59	221466.23	1332834.51	221552.41
C44	23.44	500.00	2°41'11"	1332916.60	221771.07	1332925.36	221792.82
C45	95.79	1000.00	5°29'18"	1333038.22	222055.35	1333080.21	222141.40
C46	57.24	400.00	8°11'54"	1333139.64	222249.71	1333163.49	222301.68
C47	84.08	500.00	9°38'07"	1333163.49	222301.68	1333199.48	222377.56
C48	59.60	400.00	8°32'14"	1333330.45	222602.70	1333364.15	222651.80
C49	158.86	800.00	11°22'39"	1333364.15	222651.80	1333450.61	222784.75
C50	67.16	400.00	9°37'12"	1333450.61	222784.75	1333486.32	222841.54
C51	30.21	1000.00	1°43'51"	1333557.74	222936.43	1333575.54	222960.83
C52	85.89	1557.27	3°09'37"	1333682.99	223112.94	1333734.46	223181.69
C53	36.28	250.00	8°18'53"	1333908.83	223401.70	1333929.23	223431.66
C54	43.87	250.00	10°03'17"	1333929.23	223431.66	1333954.43	223467.51
C55	27.56	200.00	7°53'38"	1334171.42	223724.84	1334187.68	223747.06
C56	58.52	500.00	6°42'22"	1334187.68	223747.06	1334221.72	223794.62
C57	65.45	500.00	7°29'59"	1334425.76	224047.03	1334463.46	224100.47
C58	38.49	350.00	6°18'06"	1334463.46	224100.47	1334485.31	224132.14
C59	67.40	600.00	6°26'09"	1334627.65	224315.95	1334671.81	224366.82
C60	64.64	600.00	6°10'23"	1334671.81	224366.82	1334714.29	224415.50
C61	68.39	800.00	4°53'53"	1334777.10	224495.85	1334821.47	224547.87
C62	45.62	500.00	5°13'39"	1334821.47	224547.87	1334850.96	224582.65

C-LINE LINE TABLE						
LINE	LENGTH	BEARING	BEGIN EASTING	BEGIN NORTHING	END EASTING	END NORTHING
L37	21.34	N17° 44' 44"E	1332640.47	220951.69	1332646.97	220972.01
L38	237.58	N17° 32' 11"E	1332646.97	220972.01	1332718.55	221198.55
L39	155.94	N18° 31' 17"E	1332754.28	221286.83	1332803.81	221434.70
L40	233.56	N20° 34' 40"E	1332834.51	221552.41	1332916.60	221771.07
L41	285.76	N23° 15' 52"E	1332925.36	221792.82	1333038.22	222055.35
L42	123.53	N28° 45' 10"E	1333080.21	222141.40	1333139.64	222249.71
L43	260.46	N30° 11' 22"E	1333199.48	222377.56	1333330.45	222602.70
L44	118.77	N36° 58' 10"E	1333486.32	222841.54	1333557.74	222936.43
L45	186.23	N35° 14' 19"E	1333575.54	222960.83	1333682.99	223112.94
L46	280.73	N38° 23' 56"E	1333734.46	223181.69	1333908.83	223401.70
L47	336.61	N40° 08' 19"E	1333954.43	223467.51	1334171.42	223724.84
L48	324.56	N38° 57' 02"E	1334221.72	223794.62	1334425.76	224047.03
L49	232.48	N37° 45' 09"E	1334485.31	224132.14	1334627.65	224315.95
L50	101.98	N38° 00' 55"E	1334714.29	224415.50	1334777.10	224495.85
L51	410.22	N37° 41' 09"E	1334850.96	224582.65	1335101.74	224907.28

D-LINE CURVE TABLE							
CURVE	LENGTH	RADIUS	DELTA	BEGIN EASTING	BEGIN NORTHING	END EASTING	END NORTHING
C63	11.78	500.00	1°21'00"	1335120.27	224932.05	1335127.44	224941.39
C64	147.43	1500.00	5°37'53"	1335478.95	225388.86	1335564.18	225509.08
C65	276.83	1400.00	11°19'45"	1335564.18	225509.08	1335689.03	225755.65
C66	241.35	1310.00	10°33'21"	1335694.17	225768.88	1335760.25	226000.65
C67	11.34	98.50	6°35'38"	1335760.25	226000.65	1335762.97	226011.65
C68	17.21	95.00	10°22'55"	1335762.97	226011.65	1335766.56	226028.46
C69	19.82	240.00	4°43'51"	1335784.42	226177.22	1335785.97	226196.97
C70	20.94	280.00	4°17'06"	1335785.97	226196.97	1335787.52	226217.85
C71	16.60	100.00	9°30'44"	1335832.15	226615.55	1335832.62	226632.12
C72	16.60	100.00	9°30'44"	1335832.62	226632.12	1335833.10	226648.70
C73	17.34	100.00	9°56'11"	1335835.29	226668.25	1335838.71	226685.23
C74	17.34	100.00	9°56'11"	1335838.71	226685.23	1335842.12	226702.21
C75	29.13	350.00	4°46'08"	1335850.77	226779.32	1335855.22	226808.11
C76	42.63	500.00	4°53'06"	1335855.22	226808.11	1335861.69	226850.23
C77	13.73	100.00	7°51'59"	1335904.91	227242.59	1335905.47	227256.30
C78	13.17	100.00	7°32'38"	1335905.47	227256.30	1335905.97	227269.45
C79	37.68	200.00	10°47'42"	1335923.01	227432.54	1335930.42	227469.43
C80	51.39	200.00	14°43'24"	1335934.53	227483.07	1335942.90	227533.64
C81	22.78	220.00	5°56'00"	1335946.00	227620.99	1335945.63	227643.76
C82	20.14	200.00	5°46'11"	1335926.88	227918.81	1335926.53	227938.94
C83	24.24	140.00	9°55'16"	1335926.53	227938.94	1335925.22	227963.11
C84	16.73	150.00	6°23'20"	1335917.32	228019.00	1335914.06	228035.39
C85	17.34	100.00	9°56'11"	1335837.02	228324.51	1335831.03	228340.76
C86	17.34	100.00	9°56'11"	1335831.03	228340.76	1335825.04	228357.01
C87	21.14	200.00	6°03'21"	1335791.00	228481.87	1335786.52	228502.52
C88	23.25	200.00	6°39'39"	1335786.52	228502.52	1335781.48	228525.20
C89	18.93	100.00	10°50'54"	1335771.95	228558.76	1335765.09	228576.38
C90	20.88	100.00	11°57'56"	1335765.09	228576.38	1335757.71	228595.88
C91	376.56	1050.00	20°32'52"	1335607.51	229159.54	1335448.91	229498.84
C92	42.87	400.00	6°08'28"	1335448.91	229498.84	1335422.29	229532.42

D-LINE LINE TABLE						
LINE	LENGTH	BEARING	BEGIN EASTING	BEGIN NORTHING	END EASTING	END NORTHING
L52	30.92	N36° 48' 07"E	1335101.74	224907.28	1335120.27	224932.05
L53	569.02	N38° 09' 07"E	1335127.44	224941.39	1335478.95	225388.86
L54	14.20	N21° 11' 28"E	1335689.03	225755.65	1335694.17	225768.88
L55	149.83	N6° 50' 51"E	1335766.56	226028.46	1335784.42	226177.22
L56	400.20	N6° 24' 06"E	1335787.52	226217.85	1335832.15	226615.55
L57	19.67	N6° 24' 06"E	1335833.10	226648.70	1335835.29	226668.25
L58	77.60	N6° 24' 06"E	1335842.12	226702.21	1335850.77	226779.32
L59	394.74	N6° 17' 08"E	1335861.69	226850.23	1335904.91	227242.59
L60	163.98	N5° 57' 47"E	1335905.97	227269.45	1335923.01	227432.54
L61	14.25	N16° 45' 30"E	1335930.42	227469.43	1335934.53	227483.07
L62	87.41	N2° 02' 05"E	1335942.90	227533.64	1335946.00	227620.99
L63	275.69	N3° 53' 55"W	1335945.63	227643.76	1335926.88	227918.81
L64	56.44	N8° 02' 59"W	1335925.22	227963.11	1335917.32	228019.00
L65	121.73	N14° 26' 19"W	1335914.06	228035.39	1335883.71	228153.28
L66	177.48	N15° 15' 11"W	1335883.71	228153.28	1335837.02	228324.51
L67	129.41	N15° 15' 11"W	1335825.04	228357.01	1335791.00	228481.87
L68	34.89	N15° 51' 29"W	1335781.48	228525.20	1335771.95	228558.76
L69	135.21	N14° 44' 28"W	1335757.71	228595.88	1335723.31	228726.63
L70	116.88	N15° 31' 45"W	1335723.31	228726.63	1335692.01	228839.25
L71	331.25	N14° 46' 45"W	1335692.01	228839.25	1335607.51	229159.54

NOTES:

1. SEE DP SHEETS FOR DRIVEWAY ALIGNMENT DATA.
2. SEE FP SHEETS FOR STREAM ALIGNMENT DATA.

CONFORMED DRAWINGS



REVISIONS	DATE	BY	DESIGNED
			M. TSUN
			DRAWN B. PURGANAN
			CHECKED Y. HO
			APPROVED J. BAILEY

ONE INCH AT FULL SCALE. IF NOT, SCALE ACCORDINGLY
FILE NAME BL1521075P19T03G-05
JOB No. 554-1521-075 P19 T03
DATE JUNE 2021

Parametrix
ENGINEERING · PLANNING · ENVIRONMENTAL SCIENCES

719 2ND AVENUE, SUITE 200 | SEATTLE, WA 98104

P 206.394.3700

WWW.PARAMETRIX.COM

PROJECT NAME

EAST LAKE SAMMAMISH
MASTER PLAN TRAIL
SOUTH SAMMAMISH SEGMENT B - PHASE 2

SAMMAMISH, WA

CITY OF SAMMAMISH PUBLIC WORKS
DEVELOPMENT REVIEW

These drawings have been reviewed for compliance with City of Sammamish Clearing and Grading and Stormwater requirements and also in accordance with the requirements as established in the Settlement Agreement between King County vs. City of Sammamish No. C17-0921 JCC and King County vs. City of Sammamish No. 17-2-29922-7 SEA and have been deemed ACCEPTABLE. The reviewer accepts no responsibility for any errors and/or omissions made by the preparer of these drawings.

17 February 2022

CITY OF SAMMAMISH APPROVAL	
City Engineer	Date
Community Development	Date

SURVEY CONTROL PLAN

SHEET NO.
8 OF 213

G7