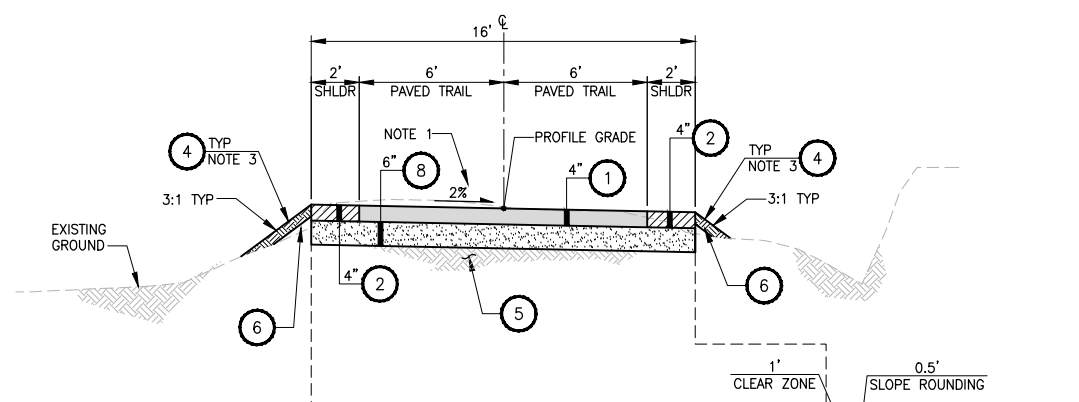
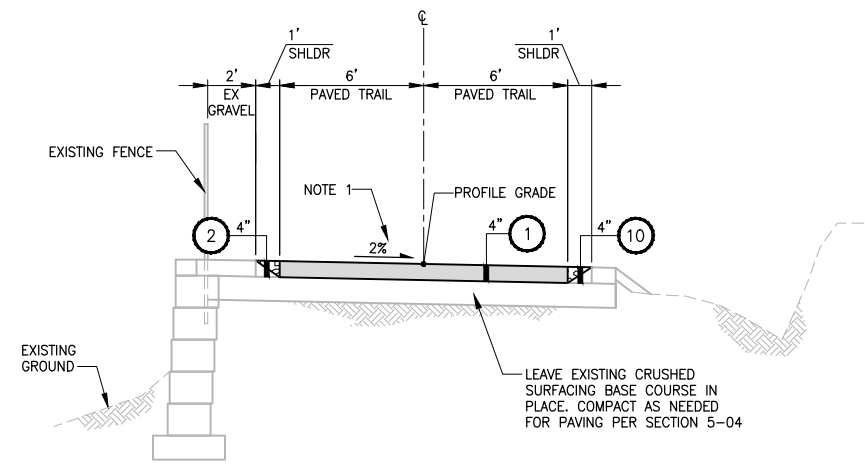
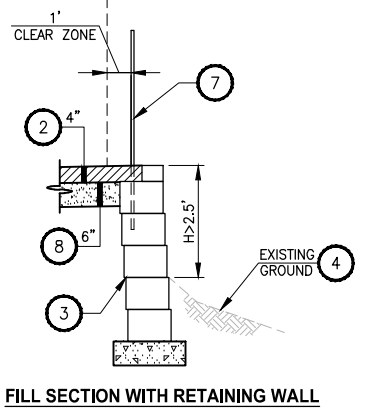
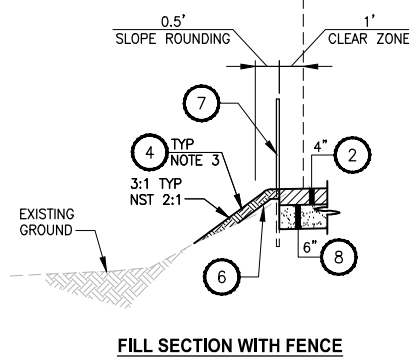
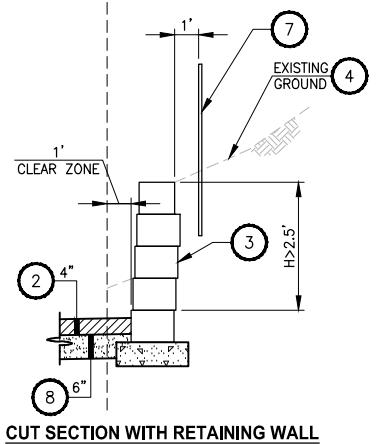
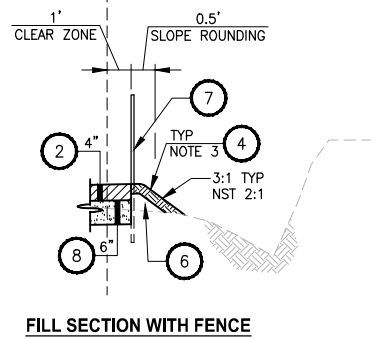
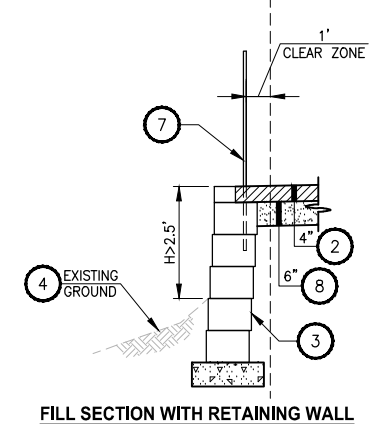


PATH: U:\P50\Projects\Clients\1521-075-ELST\985\CS1\Phase 19\T03_Cha(Dwg-Phase2).DWG
 PLOTTED BY: purgaban DATE: Monday, June 14, 2021 4:02:15 PM
 LAYOUT: CS1



C-LINE STA 375+50 TO STA 401+60
C-LINE STA 401+87 TO STA 413+46
D-LINE STA 426+15 TO STA 438+63
D-LINE STA 444+42 TO STA 447+59
D-LINE STA 448+90 TO STA 449+06
D-LINE STA 450+01 TO STA 451+65
D-LINE STA 452+49 TO STA 456+97
D-LINE STA 457+71 TO STA 468+00
SECTION WITHOUT FENCE
TYPICAL SECTION A
 NOT TO SCALE



CROSS SLOPE SCHEDULE

| ALIGNMENT | STA START | STA END | CROSS SLOPE DIRECTION |
|-----------|-----------|---------|-----------------------|
| C-LINE | 371+50 | 378+47 | RT |
| C-LINE | 378+47 | 385+64 | LT |
| C-LINE | 385+64 | 389+94 | RT |
| C-LINE | 389+94 | 396+16 | LT |
| D-LINE | 419+00 | 467+00 | RT |
| D-LINE | 467+00 | 468+00 | LT |

INFILTRATION AND UNDERDRAIN TRENCH SCHEDULE

| ALIGNMENT | STA START | STA END | TRENCH | SIDE OF TRAIL |
|-----------|-----------|---------|--------|---------------|
| C-LINE | 375+18 | 377+31 | UD | RT |
| C-LINE | 390+37 | 391+78 | IT | RT |
| C-LINE | 393+39 | 394+76 | IT | RT |
| C-LINE | 394+98 | 395+73 | IT | RT |
| C-LINE | 395+90 | 399+89 | UD | RT |
| D-LINE | 432+94 | 434+41 | UD | RT |
| D-LINE | 446+75 | 448+72 | UD | RT |
| D-LINE | 450+73 | 451+83 | UD | RT |
| D-LINE | 451+85 | 452+87 | UD | RT |
| D-LINE | 452+96 | 453+93 | UD | RT |
| D-LINE | 453+98 | 454+44 | UD | RT |
| D-LINE | 454+67 | 455+67 | UD | RT |
| D-LINE | 456+56 | 458+62 | UD | RT |
| D-LINE | 464+47 | 466+00 | IT | RT |

SLOPE PROTECTION SCHEDULE

| ALIGNMENT | STA START | STA END | SIDE OF TRAIL |
|-----------|-----------|---------|---------------|
| C-LINE | 376+92 | 378+76 | RT |
| C-LINE | 379+75 | 380+60 | RT |
| C-LINE | 380+80 | 383+75 | RT |
| C-LINE | 400+50 | 401+00 | RT |
| C-LINE | 408+40 | 410+72 | RT |
| D-LINE | 426+00 | 431+25 | RT |
| D-LINE | 436+84 | 437+35 | RT |

C-LINE STA 371+71 TO STA 375+50
SECTION WITH FENCE
TYPICAL SECTION B
 NOT TO SCALE

CONSTRUCTION NOTES:

- 1 HMA CL. 3/8" PG 64-22.
- 2 5/8" MINUS CRUSHED LEDGE ROCK, 100% FRACTURED. SEE SPECIAL PROVISIONS FOR SPECIFICATIONS.
- 3 RETAINING WALL, SEE AL SHEETS AND WP SHEETS FOR LOCATIONS, PROFILES AND WALL TYPES. SEE SHEET WD1 FOR DETAILS.
- 4 SEE SLOPE RESTORATION DETAILS ON LA SHEETS.
- 5 EXISTING BALLAST BASE.
- 6 SELECT BORROW INCL. HAUL.
- 7 2-RAIL FENCE, COATED CHAIN LINK FENCE OR GUARDRAIL. SEE AL PLANS FOR LOCATIONS AND TYPES AND SEE DETAILS ON MD SHEETS.
- 8 CRUSHED SURFACING BASE COURSE.
- 9 PERMEABLE BALLAST.
- 10 3/4" CRUSHED CLEAN ROCK. SEE SPECIAL PROVISIONS FOR SPECIFICATIONS.
- 11 WING WALL, SEE FP SHEETS FOR PROFILE AND DETAILS.
- 12 CONSTRUCTION GEOTEXTILE FOR SEPARATION MODERATE SURVIVABILITY.

GENERAL NOTES:

1. SEE SHEET CS1 FOR CROSS SLOPE SCHEDULE. SEE DP SHEETS FOR CROSS SLOPE TRANSITIONS AND GRADE BREAKS.
2. SEE UT AND DD1 SHEETS FOR DETAILS WHERE INFILTRATION TRENCH OR UNDERDRAIN TRENCH IS WITHIN THE SHOULDER. SEE SHEET CS1 FOR INFILTRATION AND UNDERDRAIN SCHEDULE FOR LOCATION AND TYPE.
3. SEE SHEET CS1 FOR SLOPE PROTECTION SCHEDULE AND DETAIL ON SHEET MD4.

CITY OF SAMMAMISH PUBLIC WORKS DEVELOPMENT REVIEW
 These drawings have been reviewed for compliance with City of Sammamish Clearing and Grading and Stormwater requirements and also in accordance with the requirements as established in the Settlement Agreement between King County vs. City of Sammamish No. C17-0921 JCC and King County vs. City of Sammamish No. 17-2-29922-7 SEA and have been deemed ACCEPTABLE. The reviewer accepts no responsibility for any errors and/or omissions made by the preparer of these drawings.
17 February 2022

| CITY OF SAMMAMISH APPROVAL | |
|-----------------------------|------------|
| City Engineer _____ | Date _____ |
| Community Development _____ | Date _____ |

CONFORMED DRAWINGS



| REVISIONS | DATE | BY | DESIGNED |
|-----------|------|----|-------------|
| | | | M. TSUN |
| | | | B. PURGANAN |
| | | | Y. HO |
| | | | J. BAILEY |

ONE INCH AT FULL SCALE, IF NOT, SCALE ACCORDINGLY
 FILE NAME: BL1521075P19T03CS-01
 JOB No.: 554-1521-075 P19 T03
 DATE: JUNE 2021

Parametrix
 ENGINEERING · PLANNING · ENVIRONMENTAL SCIENCES
 719 2ND AVENUE, SUITE 200 | SEATTLE, WA 98104
 P 206.394.3700
 WWW.PARAMETRIX.COM

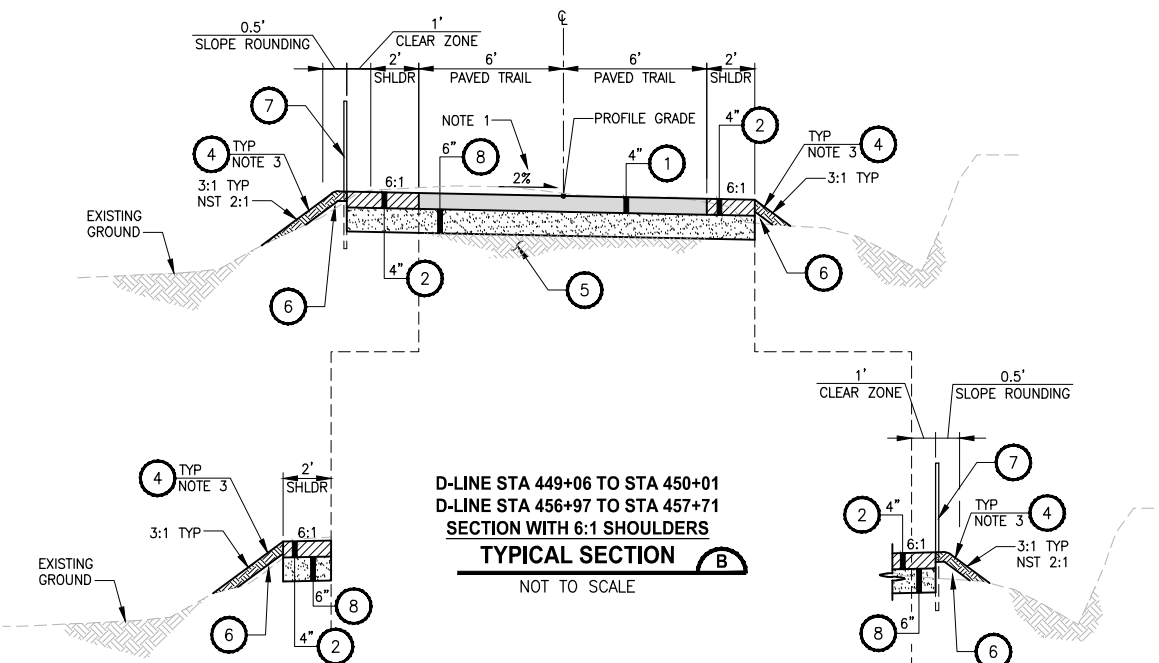
PROJECT NAME
EAST LAKE SAMMAMISH MASTER PLAN TRAIL SOUTH SAMMAMISH SEGMENT B - PHASE 2
 SAMMAMISH, WA

TYPICAL CROSS SECTIONS

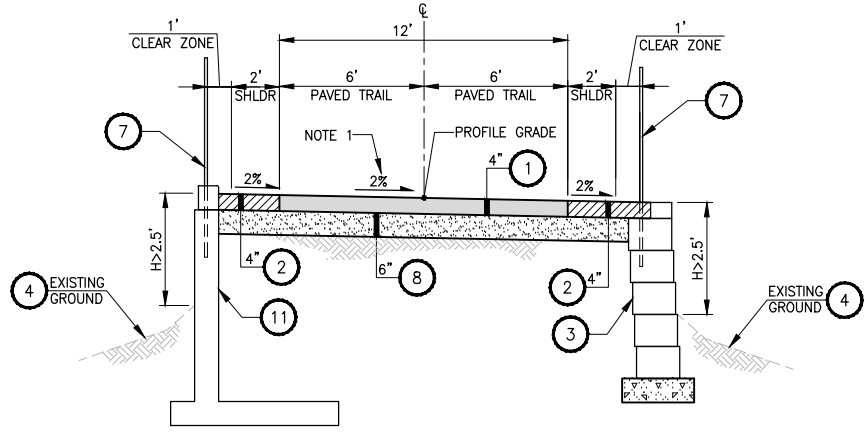
CS1

SHEET NO.
 19 OF 213

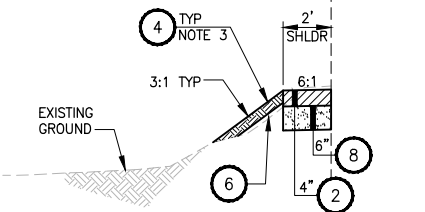
PATH: U:\P50\Projects\Clients\1521-KingCo\554-1521-075-ELST\995\cs2\19\T03_Civil\Draw-Phase2\ PLOTTED BY: purguban DATE: Monday, June 14, 2021 4:02:19 PM LAYOUT: CS2



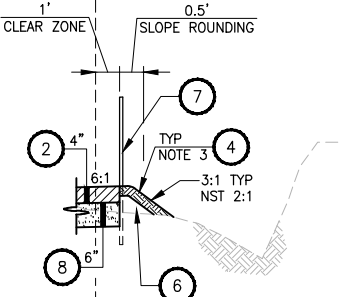
**D-LINE STA 449+06 TO STA 450+01
D-LINE STA 456+97 TO STA 457+71
SECTION WITH 6:1 SHOULDERS
TYPICAL SECTION B**
NOT TO SCALE



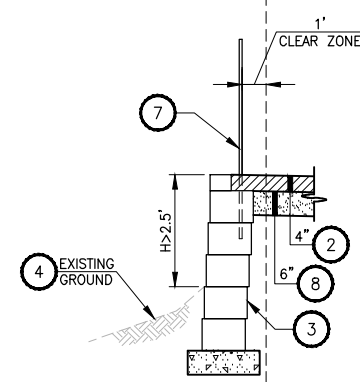
**C-LINE STA 401+60 TO STA 401+87
SECTION WITH FILL WALL
TYPICAL SECTION C**
NOT TO SCALE



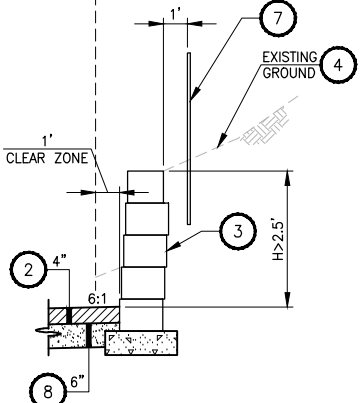
FILL SECTION WITHOUT FENCE



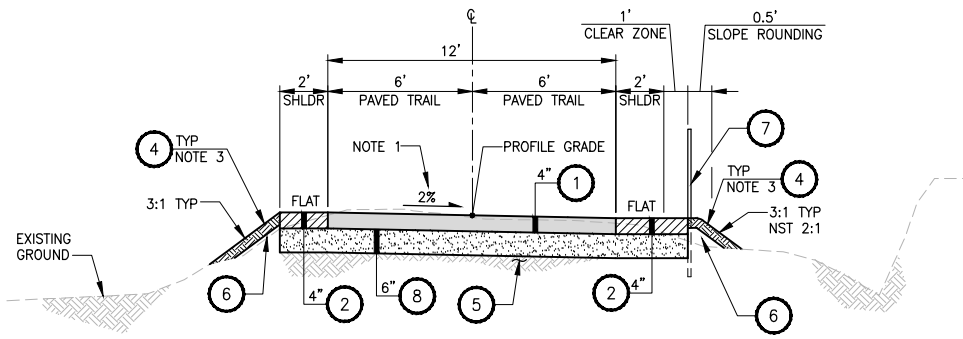
FILL SECTION WITH FENCE



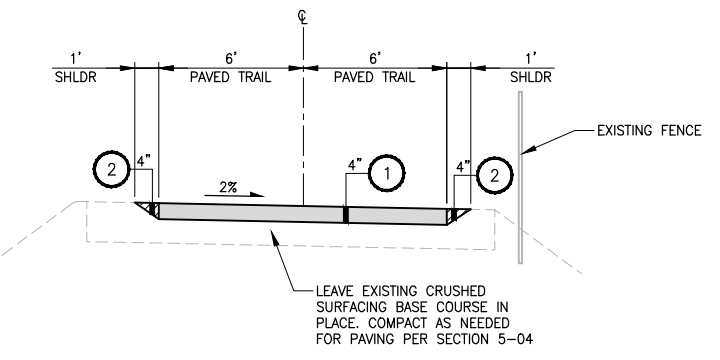
FILL SECTION WITH RETAINING WALL



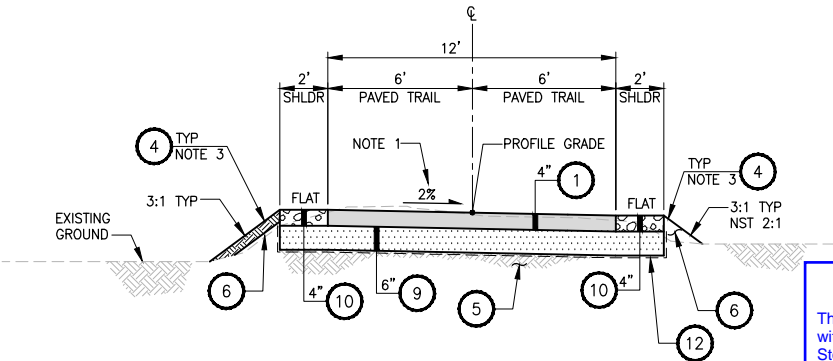
CUT SECTION WITH RETAINING WALL



**D-LINE STA 447+59 TO STA 448+90
D-LINE STA 451+65 TO STA 452+49
SECTION WITH FLAT SHOULDERS
TYPICAL SECTION D**
NOT TO SCALE



**D-LINE STA 419+14 TO STA 426+15
TYPICAL SECTION E**
NOT TO SCALE



**C-LINE STA 413+46 TO STA 418+55
SECTION WITH PERMEABLE BALLAST INFILTRATION TRENCH
TYPICAL SECTION F**
NOT TO SCALE

CONSTRUCTION NOTES:

- 1 HMA CL. 3/8" PG 64-22.
- 2 5/8" MINUS CRUSHED LEDGE ROCK, 100% FRACTURED. SEE SPECIAL PROVISIONS FOR SPECIFICATIONS.
- 3 RETAINING WALL, SEE AL SHEETS AND WP SHEETS FOR LOCATIONS, PROFILES AND WALL TYPES. SEE SHEET WD1 FOR DETAILS.
- 4 SEE SLOPE RESTORATION DETAILS ON LA SHEETS.
- 5 EXISTING BALLAST BASE.
- 6 SELECT BORROW INCL. HAUL.
- 7 2-RAIL FENCE, COATED CHAIN LINK FENCE OR GUARDRAIL. SEE AL PLANS FOR LOCATIONS AND TYPES AND SEE DETAILS ON MD SHEETS.
- 8 CRUSHED SURFACING BASE COURSE.
- 9 PERMEABLE BALLAST.
- 10 3/4" CRUSHED CLEAN ROCK. SEE SPECIAL PROVISIONS FOR SPECIFICATIONS.
- 11 WING WALL, SEE FP SHEETS FOR PROFILE AND DETAILS.
- 12 CONSTRUCTION GEOTEXTILE FOR SEPARATION MODERATE SURVIVABILITY.

GENERAL NOTES:

1. SEE SHEET CS1 FOR CROSS SLOPE SCHEDULE. SEE DP SHEETS FOR CROSS SLOPE TRANSITIONS AND GRADE BREAKS.
2. SEE UT AND DD1 SHEETS FOR DETAILS WHERE INFILTRATION TRENCH OR UNDERDRAIN TRENCH IS WITHIN THE SHOULDER. SEE SHEET CS1 FOR INFILTRATION AND UNDERDRAIN SCHEDULE FOR LOCATION AND TYPE.
3. SEE SHEET CS1 FOR SLOPE PROTECTION SCHEDULE AND DETAIL ON SHEET MD4.

CITY OF SAMMAMISH PUBLIC WORKS DEVELOPMENT REVIEW
 These drawings have been reviewed for compliance with City of Sammamish Clearing and Grading and Stormwater requirements and also in accordance with the requirements as established in the Settlement Agreement between King County vs. City of Sammamish No. C17-0921 JCC and King County vs. City of Sammamish No. 17-2-29922-7 SEA and have been deemed ACCEPTABLE. The reviewer accepts no responsibility for any errors and/or omissions made by the preparer of these drawings.
 17 February 2022

| CITY OF SAMMAMISH APPROVAL | |
|----------------------------|------|
| City Engineer | Date |
| Community Development | Date |

CONFORMED DRAWINGS



| REVISIONS | DATE | BY | DESIGNED |
|-----------|------|----|--------------------|
| | | | M. TSUN |
| | | | DRAWN B.PURGANAN |
| | | | CHECKED Y. HO |
| | | | APPROVED J. BAILEY |

ONE INCH AT FULL SCALE. IF NOT, SCALE ACCORDINGLY
 FILE NAME: BL1521075P19T03CS-01
 JOB No.: 554-1521-075 P19 T03
 DATE: JUNE 2021

Parametrix
 ENGINEERING · PLANNING · ENVIRONMENTAL SCIENCES
 719 2ND AVENUE, SUITE 200 | SEATTLE, WA 98104
 P 206.394.3700
 WWW.PARAMETRIX.COM

PROJECT NAME
EAST LAKE SAMMAMISH MASTER PLAN TRAIL SOUTH SAMMAMISH SEGMENT B - PHASE 2
 SAMMAMISH, WA

TYPICAL CROSS SECTIONS

SHEET NO.
 20 OF 213
CS2