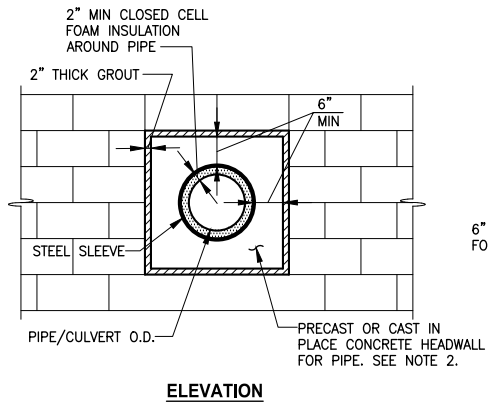


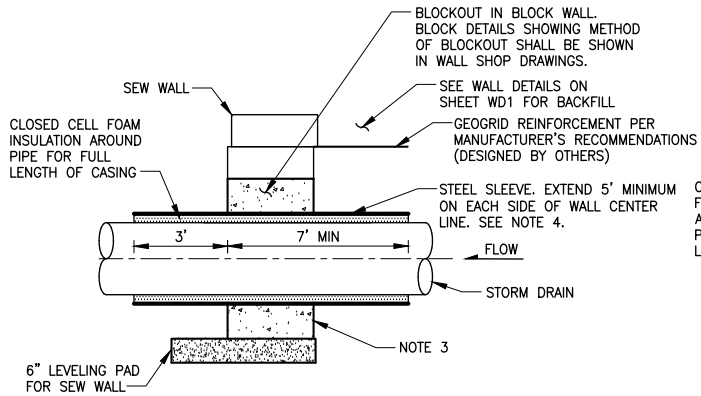
PATH: U:\P50\Projects\Clients\1521-KingCo\1521-075-ELST\99Sves\CADD\Phase 19\T03 CHA\Draw-Phase2\ PLOTTED BY: purgaban DATE: Tuesday, November 16, 2021 10:44:04 AM LAYOUT: DD1

NOTES:

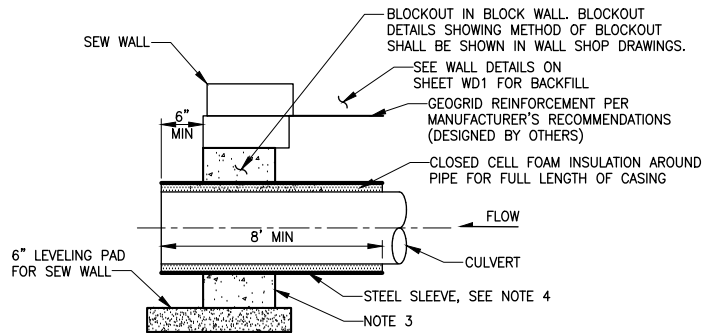
1. FOR SEW WALLS SEE SHEET WD3.
2. CONCRETE HEADWALL FOR PIPE SHALL BE CONSTRUCTED OF 4000 PSI REINFORCED CONCRETE. DETAIL SHALL BE PROVIDED BY WALL MANUFACTURER.
3. CONCRETE HEADWALL TO BE CONSTRUCTED FOR NEW AND EXISTING STORM DRAINS AND CULVERTS PER UT SHEETS. CONTRACTOR SHALL SUBMIT WORK PLAN FOR INSTALLING SLEEVE AROUND EXISTING PIPES.
4. CASING PIPE SHALL HAVE A 0.375" MIN WALL THICKNESS AND SHALL BE SMOOTH GRADE C STEEL, COMPLY WITH ASTM A139, AND HAVE A MIN 36,000 PSI YIELD. INSIDE DIAMETER OF STEEL CASING PIPE SHALL EXCEED THE OUTSIDE DIAMETER OF THE STORM DRAIN OR CULVERT BY 4". SLEEVE SHALL EXTEND THE LENGTH OF THE WALL GEOGRID. VERIFY WITH WALL SHOP DRAWINGS.



ELEVATION



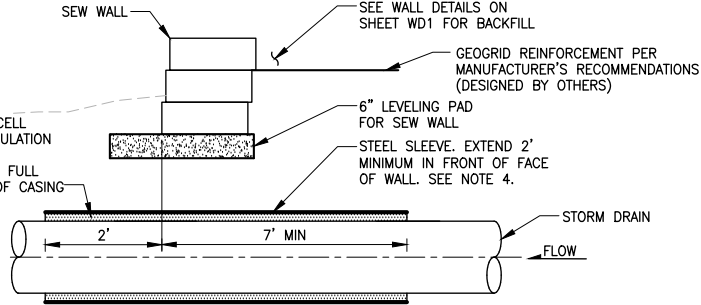
SECTION A - STORM DRAINS



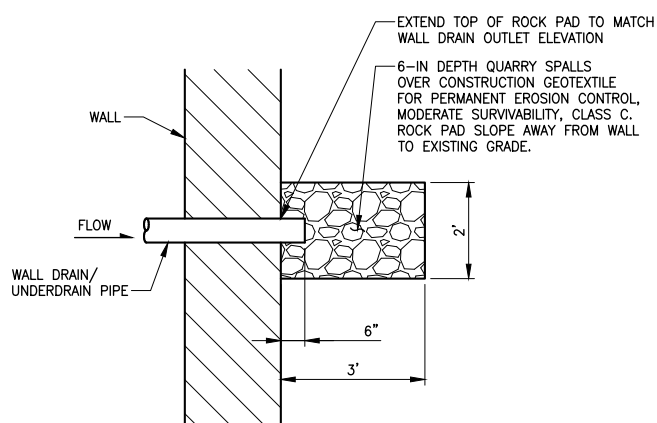
SECTION B - CULVERTS

CONCRETE HEADWALL AND SLEEVE FOR STRUCTURAL EARTH WALL
DETAIL 1

NOT TO SCALE



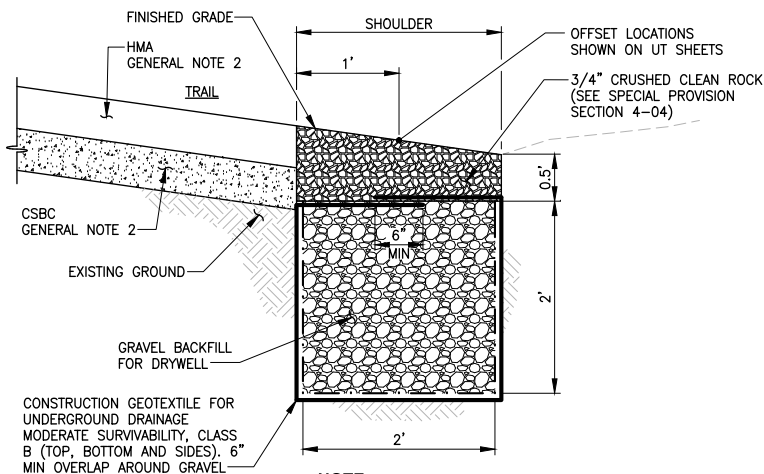
SECTION C - SLEEVE BELOW WALL



ROCK PAD PLAN VIEW

DETAIL 2

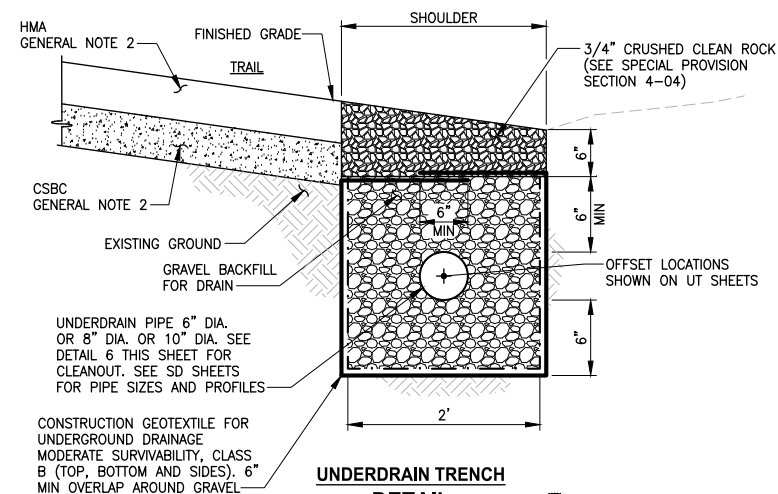
NOT TO SCALE



INFILTRATION TRENCH

DETAIL 4

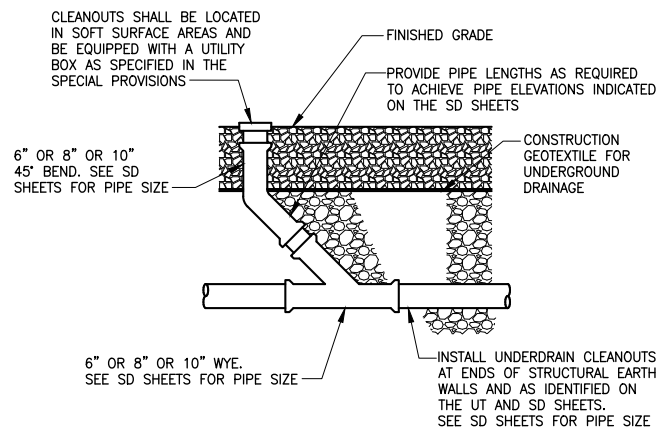
NOT TO SCALE



UNDERDRAIN TRENCH

DETAIL 5

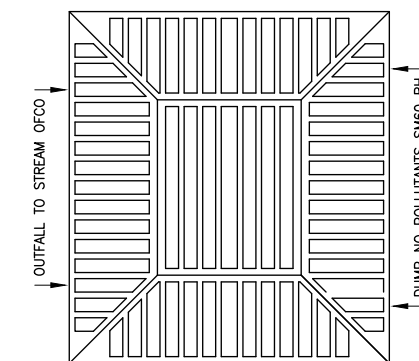
NOT TO SCALE



UNDERDRAIN CLEANOUT

DETAIL 6

NOT TO SCALE



BEEHIVE GRATE

DETAIL 7

NOT TO SCALE

NOTES:

1. BEEHIVE GRATE USED FOR CB TYPE 1 AT STA 436+33 RT AND STA 446+65 RT. SEE SD SHEETS.
2. SEE SPECIAL PROVISIONS FOR BEEHIVE GRATE MATERIAL, MEASUREMENT, AND PAYMENT.

CITY OF SAMMAMISH PUBLIC WORKS DEVELOPMENT REVIEW

These drawings have been reviewed for compliance with City of Sammamish Clearing and Grading and Stormwater requirements and also in accordance with the requirements as established in the Settlement Agreement between King County vs. City of Sammamish No. C17-0921/JCC and King County vs. City of Sammamish No. 17-2-29922-7 SEA and have been deemed ACCEPTABLE. The reviewer accepts no responsibility for any errors and/or omissions made by the preparer of these drawings.

17 February 2022

Community Development

CONFORMED DRAWINGS



ONE INCH AT FULL SCALE.
IF NOT, SCALE ACCORDINGLY
FILE NAME
BL1521075P19T03DD-01
JOB No.
554-1521-075 P19 T03
DATE
JUNE 2021

Parametrix
ENGINEERING · PLANNING · ENVIRONMENTAL SCIENCES

719 2ND AVENUE, SUITE 200 | SEATTLE, WA 98104
P 206.394.3700
WWW.PARAMETRIX.COM

PROJECT NAME

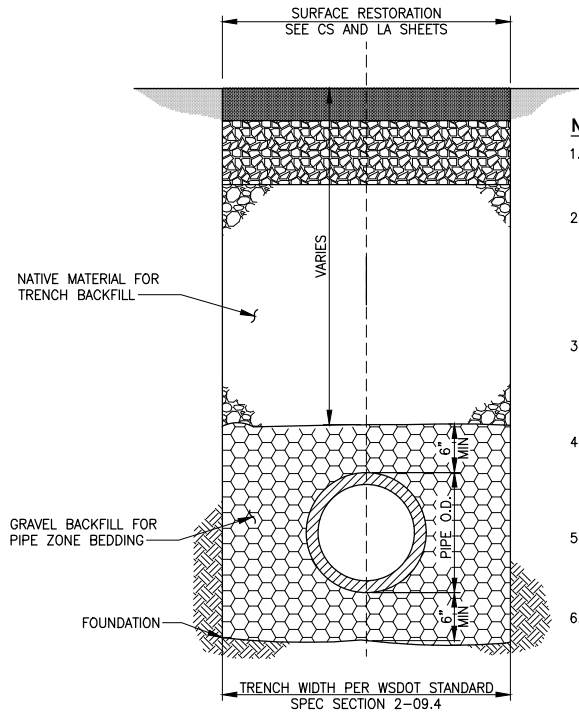
**EAST LAKE SAMMAMISH
MASTER PLAN TRAIL
SOUTH SAMMAMISH SEGMENT B - PHASE 2**
SAMMAMISH, WA

DRAINAGE DETAILS
Addendum 2

SHEET NO.
80 OF 213

DD1

PATH: U:\PSO\Projects\Clients\1521-075-ELST\99Sves\ADD Phase 19\T03 Civil\Draw-Phase2\ PLOTTED BY: purgbut DATE: Monday, November 15, 2021 5:54:53 PM LAYOUT: DD2



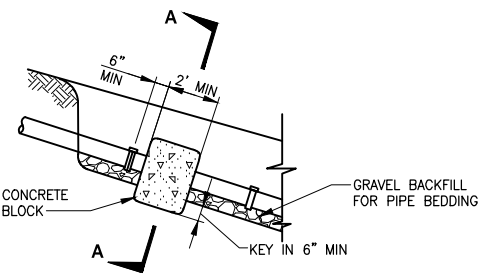
NOTES:

1. ALL MATERIALS EXCEPT BEDDING MATERIAL SHALL BE COMPACTED IN 6-INCH MAXIMUM LIFTS.
2. COMPACTION: BEDDING SHALL BE COMPACTED TO AT LEAST 95% OF THE MAXIMUM DRY DENSITY (MDD) AS DETERMINED BY ASTM TEST METHOD D1557. BACKFILL SHALL BE COMPACTED TO 85% IN UNPAVED AREA, AND 95% IN GRAVEL PARKING OR TRAIL AREAS AS DETERMINED BY ASTM D1557.
3. ALL MATERIALS, WORKMANSHIP, AND INSTALLATION SHALL BE IN CONFORMANCE WITH THE LATEST VERSION OF WSDOT STANDARD SPECIFICATIONS FOR ROAD, BRIDGE AND MUNICIPAL CONSTRUCTION.
4. THE CONTRACTOR SHALL NOTIFY THE ENGINEER AT LEAST 24 HOURS BEFORE INSTALLATION OF STORM SEWER PIPE. ENGINEER WILL PROVIDE CONSTRUCTION OBSERVATION.
5. THE CONTRACTOR SHALL USE A STEEL PLATE TO COVER PIPE TRENCH OPENINGS TO ACCOMMODATE LOCAL TRAFFIC DURING NON-WORKING HOURS.
6. PIPE TRENCH DETAIL SHALL APPLY TO STORM SEWER, DRAIN, AND CULVERT PIPES.

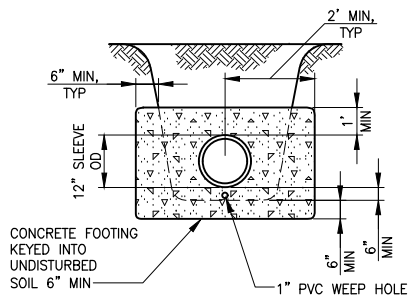
**PIPE TRENCH
DETAIL**

NO SCALE

1



CONCRETE BLOCK ANCHOR

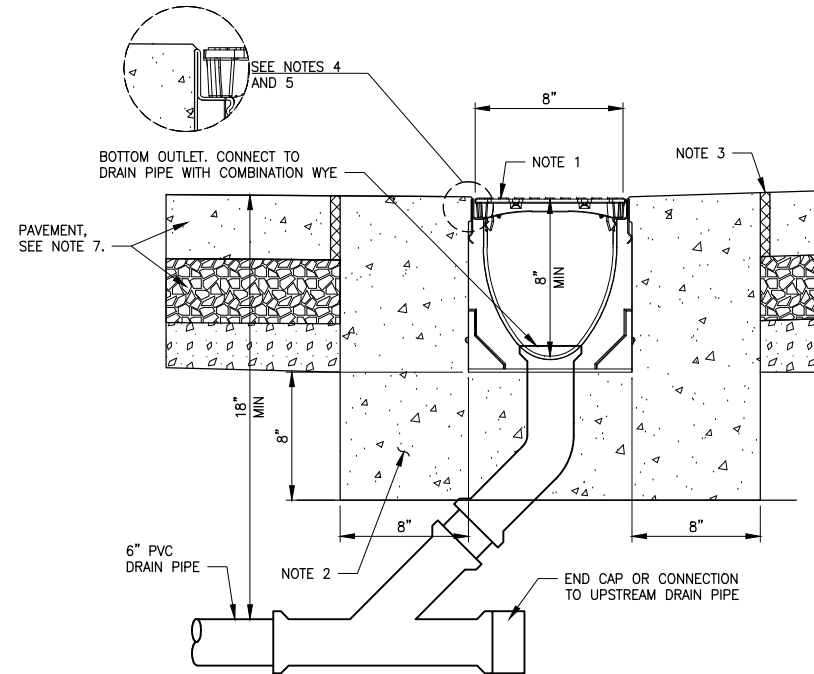


SECTION A-A

**PIPE ANCHOR
DETAIL**

NOT TO SCALE

3



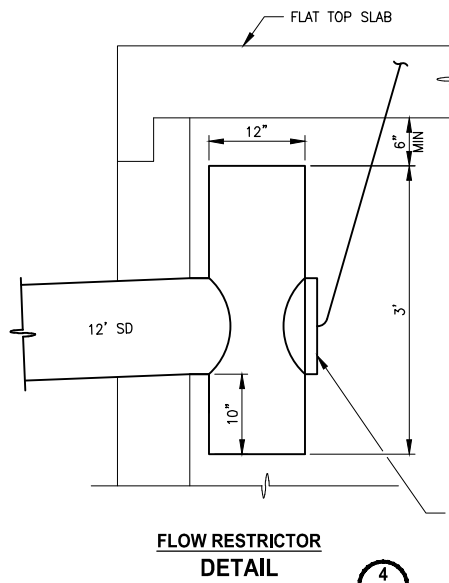
**CHANNEL DRAIN
DETAIL**

NOT TO SCALE

3

NOTES:

1. ADA COMPLIANCE METAL GRATE. MIN LOAD CLASS A, 40-70 PSI.
2. MINIMUM CONCRETE STRENGTH OF 4,000 PSI. CONCRETE SHOULD BE VIBRATED TO ELIMINATE AIR POCKETS.
3. EXPANSION AND CONTRACTION CONTROL JOINTS AND REINFORCEMENT ARE TO PROTECT CHANNEL AND CONCRETE SURROUND.
4. THE FINISHED LEVEL OF THE CONCRETE SURROUND MUST BE APPROX 1/8" ABOVE THE TOP OF THE CHANNEL EDGE.
5. CONCRETE BASE THICKNESS SHOULD MATCH SLAB THICKNESS.
6. REFER TO MANUFACTURER'S INSTALLATION INSTRUCTIONS FOR FURTHER DETAILS.
7. SEE PLAN AND PROFILE SHEET AL21.



**FLOW RESTRICTOR
DETAIL**

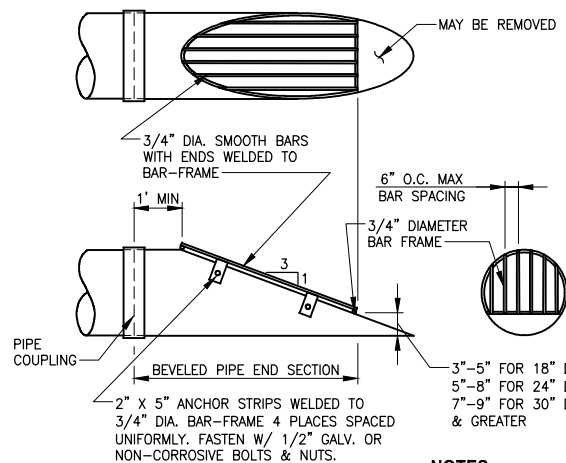
NOT TO SCALE

4

NOTES:

1. FLOW RESTRICTOR ORIFICE PLATE-TEE (FROP-T) SHALL CONFORM TO RESTRICTOR DETAIL KCRS FIG. 7-025 WITH THE SPECIFIC CHANGES PROVIDED IN NOTE 6 OF THIS DETAIL.
2. FROP-T SHALL NOT HAVE ELBOW RESTRICTORS.
3. FROP-T SHALL NOT HAVE A RESTRICTOR PLATE ON THE BOTTOM END. THE TOP AND BOTTOM ENDS SHALL BE OPEN.
4. TOP OF FROP-T SHALL HAVE A MINIMUM OF 6 IN. VERTICAL CLEARANCE FROM INTERIOR OF CATCH BASIN WALL.
5. PROVIDE AT LEAST ONE 3 X 0.090 GAUGE SUPPORT BRACKET ANCHORED TO THE CONCRETE WALL WITH 5/8 IN. STAINLESS STEEL EXPANSION BOLTS OR EMBEDDED SUPPORTS 2 IN. INTO CATCH BASIN WALL (VERTICAL SPACING).
6. THE FROP-T SHALL BE FABRICATED FROM 0.060" CORRUGATED ALUMINUM ALLOY DRAIN PIPE, OR 0.064" CORRUGATED ALUMINIZED STEEL DRAIN PIPE, OR 0.060" ALUMINUM ALLOY FLAT SHEET, IN ACCORDANCE WITH ASTM B 209, 5052 H32 OR EPS HIGH DENSITY POLYETHYLENE STORM SEWER PIPE.
6. FOR CB TYPE 2 AT STA 456+46 RT W/ 7" DIAM ORIFICE.

SHEAR GATE WITH CONTROL ROD FOR CLEANOUT/DRAIN (ROD BENT AS REQUIRED FOR VERTICAL ALIGNMENT WITH COVER) SEE KCRS FIG. 7-026.



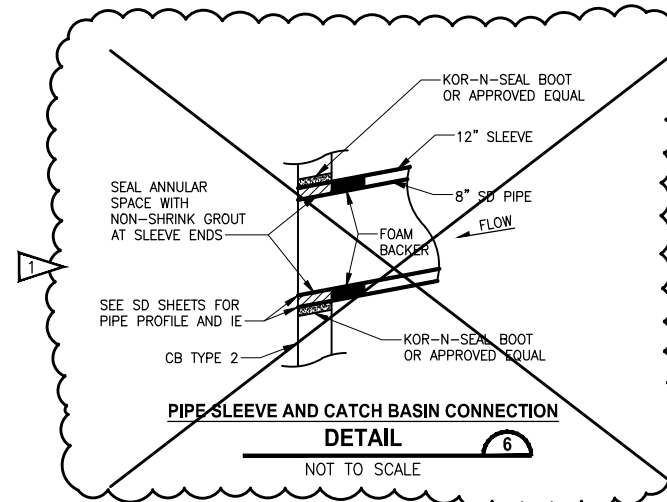
**DEBRIS BARRIER
DETAIL**

NOT TO SCALE

5

NOTES:

1. CMP OR LINED CPE PIPE END-SECTION SHOWN; FOR CONCRETE PIPE BEVELED END SECTION, SEE KCRDCS DRAWING NO. 7-001.
2. ALL STEEL PARTS MUST BE GALVANIZED AND ASPHALT COATED (TREATMENT 1 OR BETTER).
3. DEBRIS BARRIER USED AT STA 384+26 RT AND STA 455+82 RT.



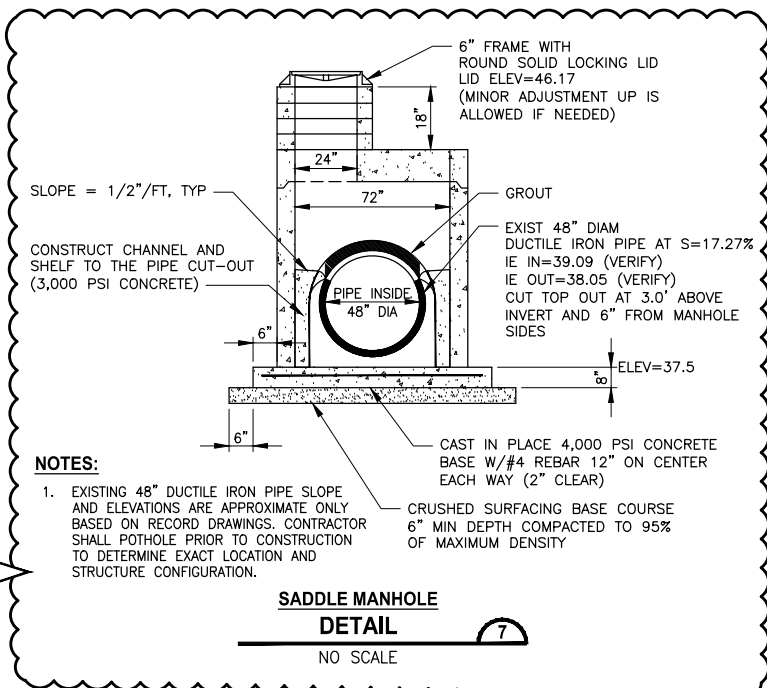
**PIPE SLEEVE AND CATCH BASIN CONNECTION
DETAIL**

NOT TO SCALE

6

**CITY OF SAMMAMISH PUBLIC WORKS
DEVELOPMENT REVIEW**

These drawings have been reviewed for compliance with City of Sammamish Clearing and Grading and Stormwater requirements and also in accordance with the requirements as established in the Settlement Agreement between King County vs. City of Sammamish No. C17-0921 JCC and King County vs. City of Sammamish No. 17-2-29922-7 SEA and have been deemed ACCEPTABLE. The reviewer accepts no responsibility for any errors and/or omissions made by the preparer of these drawings.
17 February 2022



**SADDLE MANHOLE
DETAIL**

NO SCALE

7

NOTES:

1. EXISTING 48" DUCTILE IRON PIPE SLOPE AND ELEVATIONS ARE APPROXIMATE ONLY BASED ON RECORD DRAWINGS. CONTRACTOR SHALL POT-HOLE PRIOR TO CONSTRUCTION TO DETERMINE EXACT LOCATION AND STRUCTURE CONFIGURATION.

CITY OF SAMMAMISH APPROVAL	
City Engineer	Date
Community Development	Date

CONFORMED DRAWINGS



ONE INCH AT FULL SCALE.
IF NOT, SCALE ACCORDINGLY
FILE NAME
BL1521075P19T03DD-01
JOB No.
554-1521-075 P19 T03
DATE
JUNE 2021

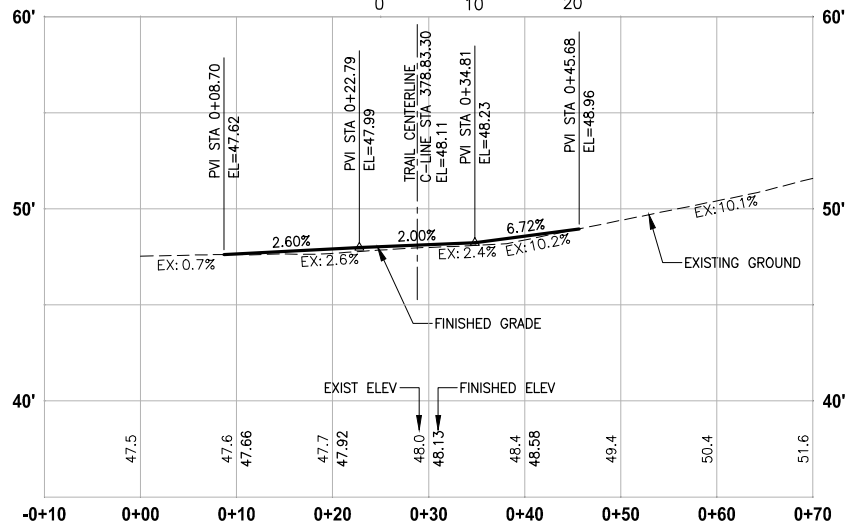
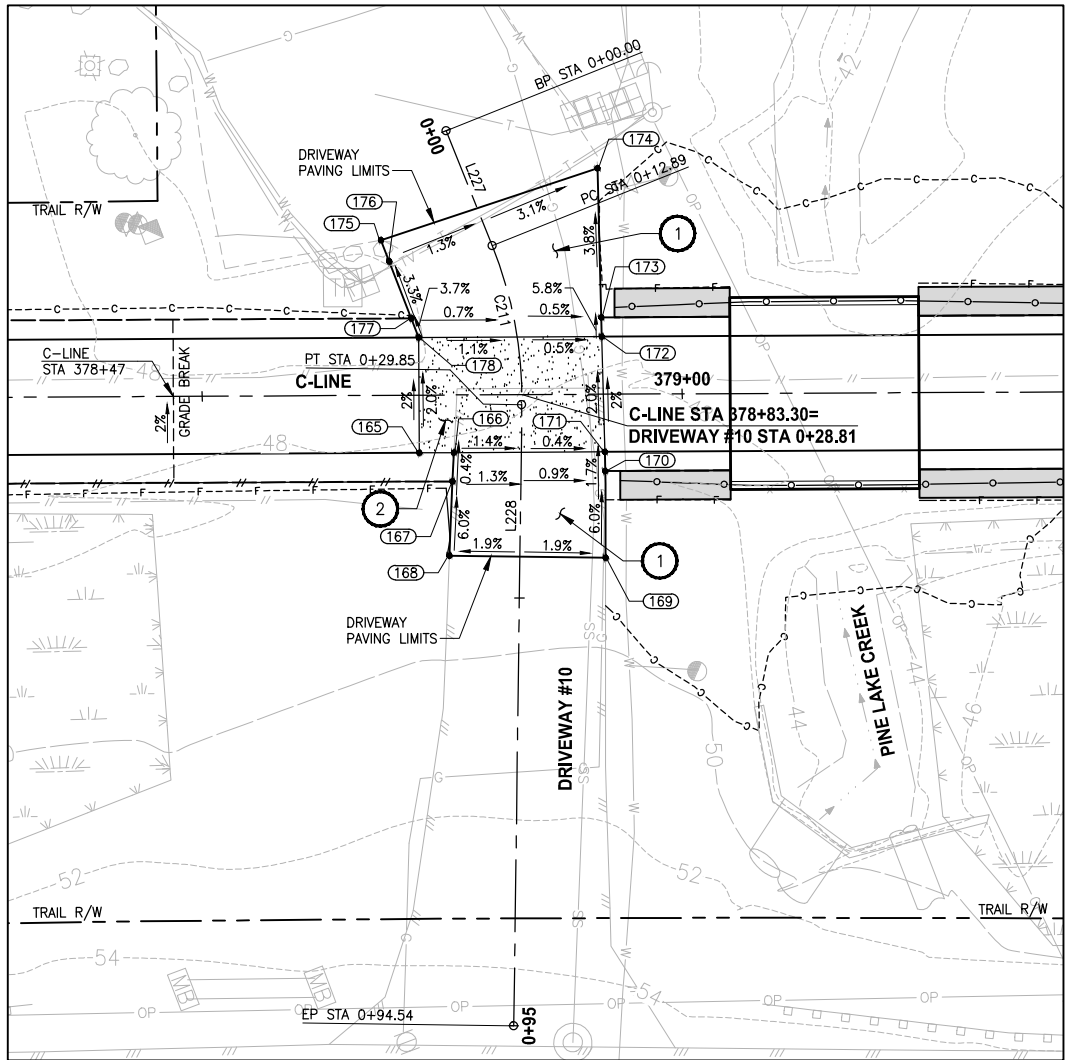
Parametrix
ENGINEERING · PLANNING · ENVIRONMENTAL SCIENCES
719 2ND AVENUE, SUITE 200 | SEATTLE, WA 98104
P 206.394.3700
WWW.PARAMETRIX.COM

PROJECT NAME
**EAST LAKE SAMMAMISH
MASTER PLAN TRAIL
SOUTH SAMMAMISH SEGMENT B - PHASE 2**
SAMMAMISH, WA

DRAINAGE DETAILS
Addendum 2

SHEET NO.
81 OF 213
DD2

PATH: U:\P50\Projects\Clients\1521-KingCo\554-1521-075-ELST\99Sect\CADD\Phase 19\T03_Civ\Draw-Phase2\ PLOTTED BY: purgabut DATE: Monday, June 14, 2021 5:29:37 PM LAYOUT: DP1



DRIVEWAY #10 POINT TABLE				
POINT #	C-LINE STATION	OFFSET	ELEVATION	DESCRIPTION
165	378+72.59	6.00' RT	48.34	CONC-ASPH
166	378+76.20	6.00' RT	48.33	CONC-ASPH
167	378+76.03	9.00' RT	48.34	GRADE BREAK
168	378+75.67	16.74' RT	48.81	ME-ASPH
169	378+91.94	17.03' RT	48.78	ME-ASPH
170	378+91.95	8.00' RT	48.29	AP-ASPH
171	378+91.91	6.00' RT	48.26	CONC-ASPH
172	378+91.66	6.00' LT	48.03	CONC-ASPH
173	378+91.62	8.00' LT	47.90	GRADE BREAK
174	378+91.30	23.53' LT	47.24	ASPH-GRAVEL
175	378+68.71	16.16' LT	47.82	ASPH-GRAVEL
176	378+69.56	13.95' LT	47.80	GRADE BREAK
177	378+71.83	8.00' LT	48.01	GRADE BREAK
178	378+72.59	6.00' LT	48.10	CONC-ASPH

DRIVEWAY #10 LINE TABLE						
LINE	LENGTH	BEARING	BEGIN EASTING	BEGIN NORTHING	END EASTING	END NORTHING
L227	12.89	N89° 03' 24"E	1332841.62	221649.67	1332854.50	221649.88
L228	64.69	S68° 23' 38"E	1332871.08	221646.86	1332931.23	221623.04

DRIVEWAY #10 CURVE TABLE						
CURVE	LENGTH	RADIUS	DELTA	BEGIN EASTING	BEGIN NORTHING	END EASTING
C211	16.96	43.10	22°32'58"	1332854.50	221649.88	1332871.08

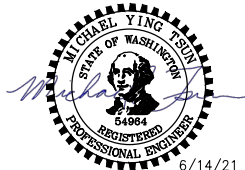
CONSTRUCTION NOTES:

- HMA DRIVEWAY PAVEMENT SECTION SHALL BE 4" HMA CL 1/2 PG 64-22 OVER 8" CRUSHED SURFACING BASE COURSE.
- PATTERNED CONCRETE INTERSECTION, SEE 1 MD4
- ROCK WALL, SEE 1 MD1

LEGEND:

- PATTERNED CONCRETE DRIVEWAY
- HMA
- GRAVEL DRIVEWAY

CONFORMED DRAWINGS



Parametrix
ENGINEERING · PLANNING · ENVIRONMENTAL SCIENCES

719 2ND AVENUE, SUITE 200 | SEATTLE, WA 98104
P 206.394.3700
WWW.PARAMETRIX.COM

PROJECT NAME

**EAST LAKE SAMMAMISH
MASTER PLAN TRAIL
SOUTH SAMMAMISH SEGMENT B - PHASE 2**

SAMMAMISH, WA

DRIVEWAY PLAN AND PROFILE

SHEET NO.
94 OF 213

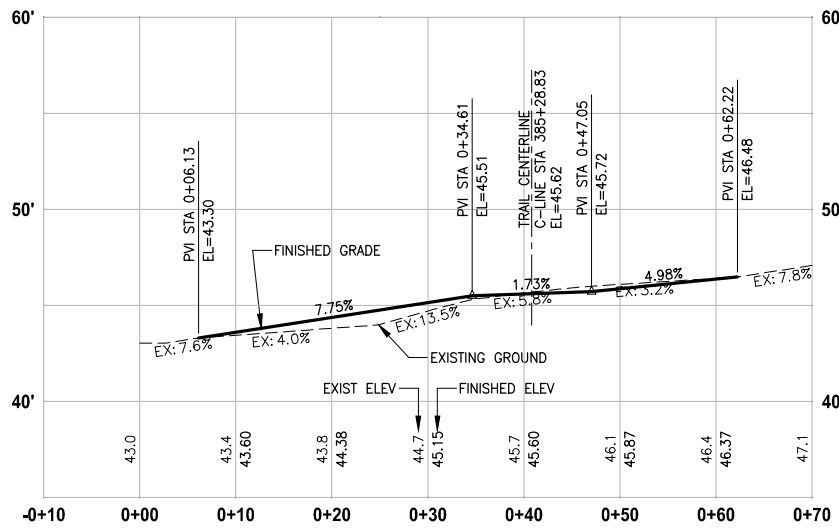
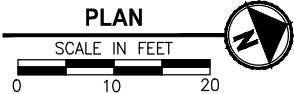
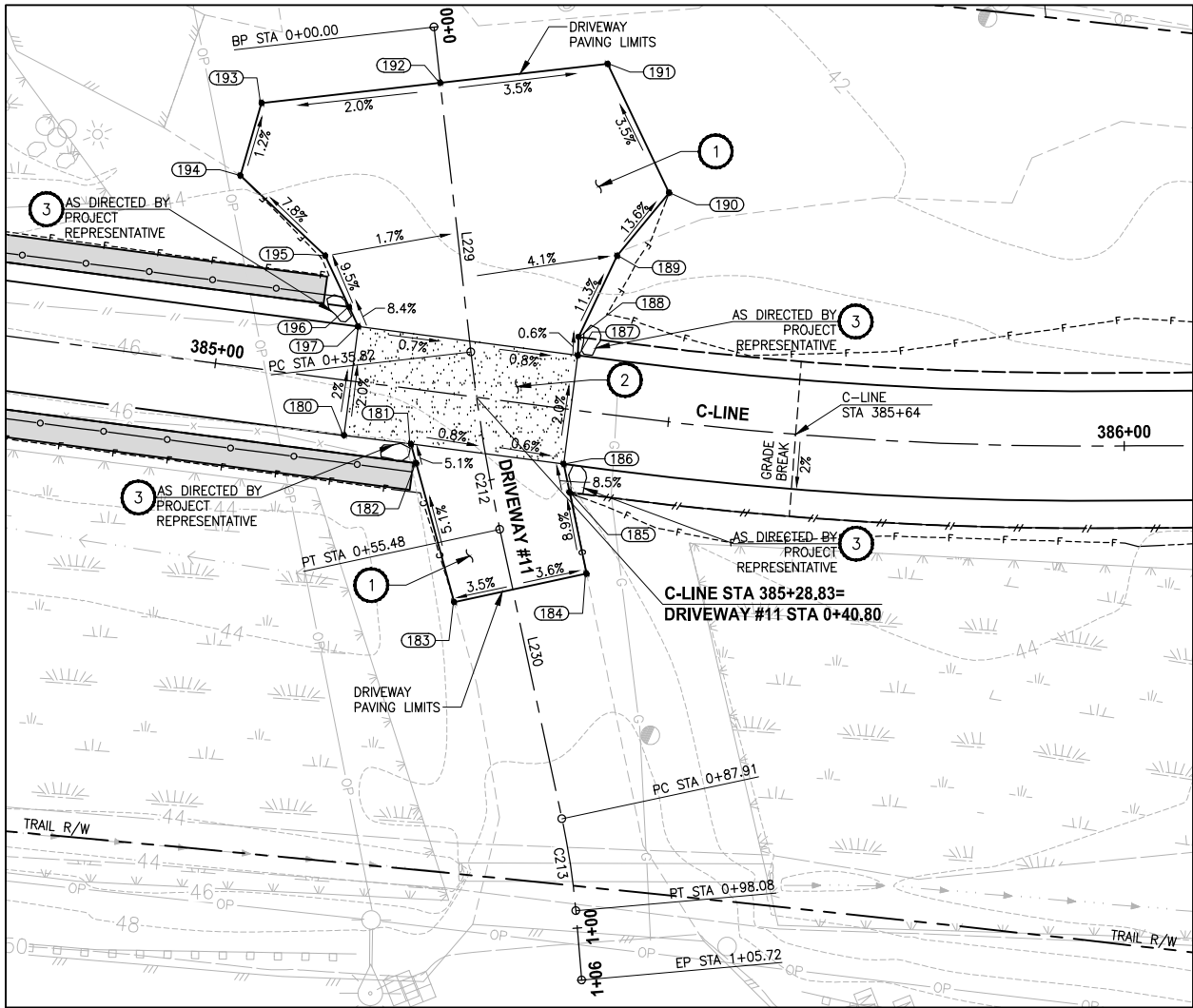
DP1

**CITY OF SAMMAMISH PUBLIC WORKS
DEVELOPMENT REVIEW**

These drawings have been reviewed for compliance with City of Sammamish Clearing and Grading and Stormwater requirements and also in accordance with the requirements as established in the Settlement Agreement between King County vs. City of Sammamish No. C17-0921 JCC and King County vs. City of Sammamish No. 17-2-29922-7 SEA and have been deemed ACCEPTABLE. The reviewer accepts no responsibility for any errors and/or omissions made by the preparer of these drawings.

Date: 17 February 2022

U:\P50\Projects\Clients\1521-KingCo\554-1521-075-ELST\995\res\CADD\Phase 19\T03_Civil\Draw-Phase2\ PLOTTED BY: purgbut DATE: Monday, June 14, 2021 5:29:48 PM LAYOUT: DP2



DRIVEWAY #11 (SHEET AL4)

HORIZ: 1"=10'
VERT: 1"=5'

CONFORMED DRAWINGS

DRIVEWAY #11 POINT TABLE				
POINT #	C-LINE STATION	OFFSET	ELEVATION	DESCRIPTION
180	385+14.98	6.00' RT	45.84	CONC-ASPH
181	385+22.37	6.00' RT	45.79	CONC-ASPH
182	385+23.21	8.00' RT	45.90	GRADE BREAK
183	385+29.30	22.54' RT	46.71	ME-ASPH
184	385+43.26	17.59' RT	46.79	ME-ASPH
185	385+40.27	9.00' RT	45.93	GRADE BREAK
186	385+39.22	6.00' RT	45.66	CONC-ASPH
187	385+39.22	6.00' LT	45.42	CONC-ASPH
188	385+39.04	8.00' LT	45.41	GRADE BREAK
189	385+42.09	17.36' LT	44.30	ME-ASPH
190	385+47.01	24.93' LT	43.08	ME-ASPH
191	385+38.32	38.07' LT	42.66	ME-ASPH
192	385+20.43	33.64' LT	43.30	ME-ASPH
193	385+01.32	28.91' LT	43.71	ME-ASPH
194	385+00.05	20.75' LT	43.81	ME-ASPH
195	385+10.38	13.24' LT	44.80	AP-ASPH
196	385+13.71	8.00' LT	45.38	GRADE BREAK
197	385+14.98	6.00' LT	45.60	CONC-ASPH

DRIVEWAY #11 LINE TABLE						
LINE	LENGTH	BEARING	BEGIN EASTING	BEGIN NORTHING	END EASTING	END NORTHING
L229	35.82	S75° 09' 56"E	1333092.82	222246.69	1333127.45	222237.52
L230	32.43	S80° 47' 57"E	1333146.68	222233.43	1333178.69	222228.24

DRIVEWAY #11 CURVE TABLE							
CURVE	LENGTH	RADIUS	DELTA	BEGIN EASTING	BEGIN NORTHING	END EASTING	END NORTHING
C212	19.66	200.00	5°38'01"	1333127.45	222237.52	1333146.68	222233.43
C213	10.17	81.85	7°07'05"	1333178.69	222228.24	1333188.60	222226.00

CONSTRUCTION NOTES:

- 1 HMA DRIVEWAY PAVEMENT SECTION SHALL BE 4" HMA CL 1/2 PG 64-22 OVER 8" CRUSHED SURFACING BASE COURSE.
- 2 PATTERNED CONCRETE INTERSECTION, SEE 1 MD4
- 3 ROCK WALL, SEE 1 MD1

LEGEND:

- PATTERNED CONCRETE DRIVEWAY
- HMA
- GRAVEL DRIVEWAY

CITY OF SAMMAMISH PUBLIC WORKS DEVELOPMENT REVIEW

These drawings have been reviewed for compliance with City of Sammamish Clearing and Grading and Stormwater requirements and also in accordance with the requirements as established in the Settlement Agreement between King County vs. City of Sammamish No. C17-0921 JCC and King County vs. City of Sammamish No. 17-2-29922-7 SEA and have been deemed ACCEPTABLE. The reviewer accepts no responsibility for any errors and/or omissions made by the preparer of these drawings.

17 February 2022

REVISIONS	DATE	BY	DESIGNED
			M. TSUN
			B. PURGANAN
			Y. HO
			J. BAILEY

ONE INCH AT FULL SCALE, IF NOT, SCALE ACCORDINGLY	
FILE NAME	BL1521075P19T03DP-01
JOB No.	554-1521-075 P19 T03
DATE	JUNE 2021



6/14/21

Parametrix
ENGINEERING · PLANNING · ENVIRONMENTAL SCIENCES

719 2ND AVENUE, SUITE 200 | SEATTLE, WA 98104
P 206.394.3700
WWW.PARAMETRIX.COM

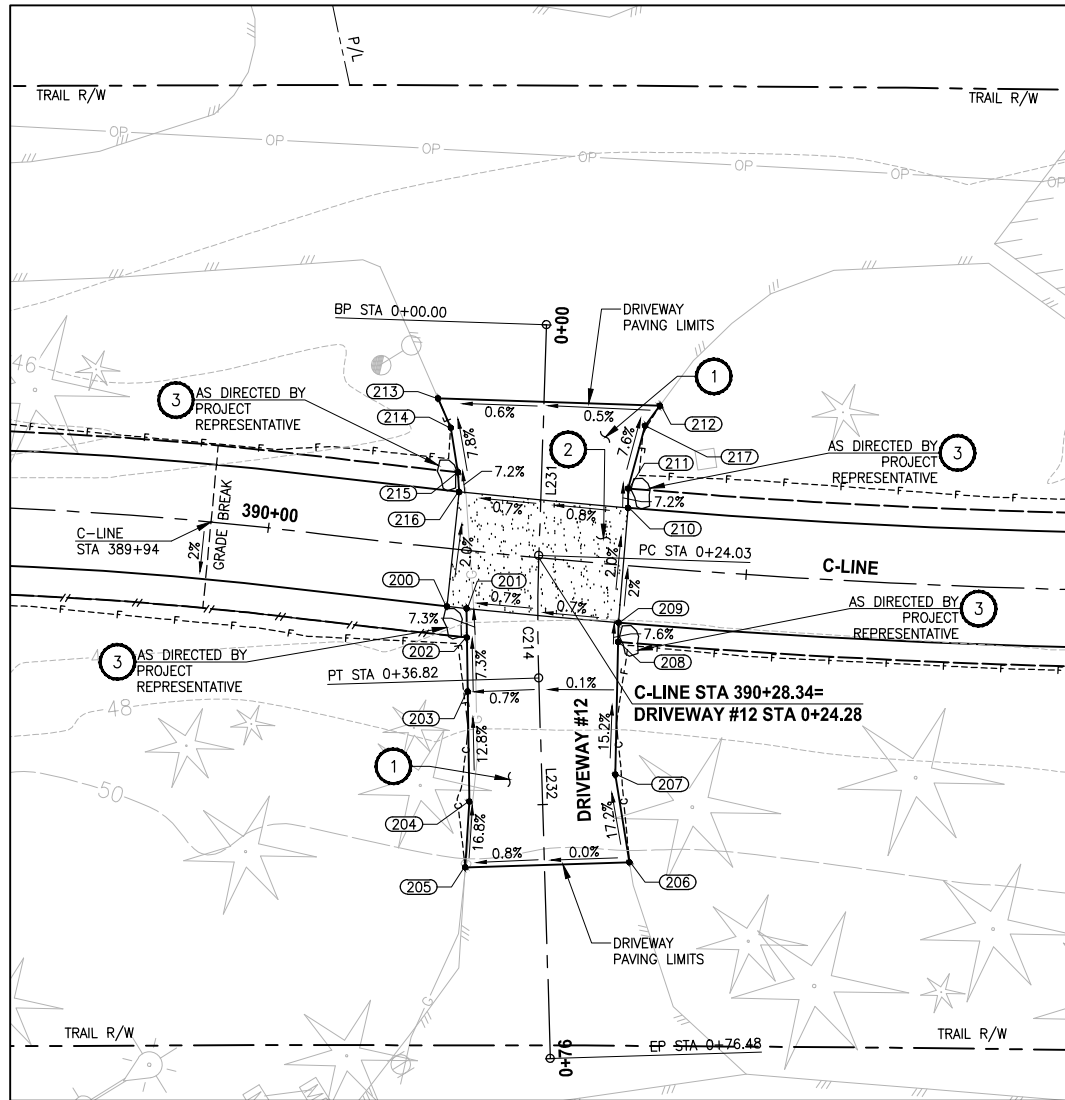
PROJECT NAME
**EAST LAKE SAMMAMISH
MASTER PLAN TRAIL
SOUTH SAMMAMISH SEGMENT B - PHASE 2**
SAMMAMISH, WA

DRIVEWAY PLAN AND PROFILE

SHEET NO.
95 OF 213

DP2

U:\PSO\Projects\Clients\1521-KingCo\554-1521-075-ELST\99Sect\CADD\Phase 19\T03 Civil\Draw-Phase2\ PLOTTED BY: purgbut DATE: Monday, June 14, 2021 5:30:03 PM LAYOUT: DP3

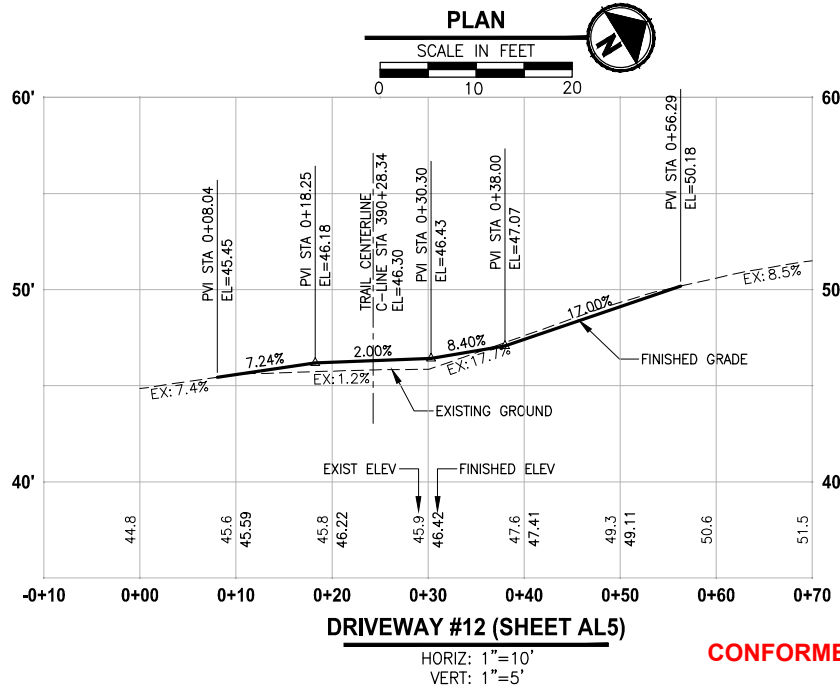


CONSTRUCTION NOTES:

- 1 HMA DRIVEWAY PAVEMENT SECTION SHALL BE 4" HMA CL 1/2 PG 64-22 OVER 8" CRUSHED SURFACING BASE COURSE.
- 2 PATTERNED CONCRETE INTERSECTION, SEE 1 MD4
- 3 ROCK WALL, SEE 1 MD1

LEGEND:

- PATTERNED CONCRETE DRIVEWAY
- HMA
- GRAVEL DRIVEWAY



DRIVEWAY #12 POINT TABLE				
POINT #	C-LINE STATION	OFFSET	ELEVATION	DESCRIPTION
200	390+19.36	6.00' RT	46.36	CONC-ASPH
201	390+21.39	6.00' RT	46.37	CONC-ASPH
202	390+21.74	9.00' RT	46.59	GRADE BREAK
203	390+22.39	14.60' RT	47.00	ASPH
204	390+23.68	25.98' RT	48.95	AP-ASPH
205	390+23.92	32.84' RT	50.10	ME-ASPH
206	390+40.27	30.78' RT	50.19	ME-ASPH
207	390+38.14	21.79' RT	48.60	AP-ASPH
208	390+37.29	8.00' RT	46.64	GRADE BREAK
209	390+37.17	6.00' RT	46.49	CONC-ASPH
210	390+37.17	6.00' LT	46.25	CONC-ASPH
211	390+37.00	8.00' LT	46.10	GRADE BREAK
212	390+39.63	16.87' LT	45.50	ME-ASPH
213	390+16.08	15.44' LT	45.38	ME-ASPH
214	390+17.78	12.55' LT	45.62	AP-ASPH
215	390+19.02	8.00' LT	45.99	AP-ASPH
216	390+19.36	6.00' LT	46.15	CONC-ASPH
217	390+38.24	14.67' LT	45.58	GRADE BREAK

DRIVEWAY #12 LINE TABLE						
LINE	LENGTH	BEARING	BEGIN EASTING	BEGIN NORTHING	END EASTING	END NORTHING
L231	24.03	S56° 25' 04"E	1333357.95	222683.25	1333377.97	222669.96
L232	39.65	S60° 04' 57"E	1333388.85	222663.23	1333423.22	222643.45

DRIVEWAY #12 CURVE TABLE							
CURVE	LENGTH	RADIUS	DELTA	BEGIN EASTING	BEGIN NORTHING	END EASTING	END NORTHING
C214	12.79	200.00	3°39'54"	1333377.97	222669.96	1333388.85	222663.23

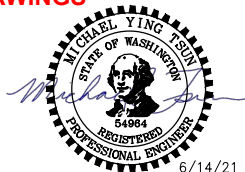
CITY OF SAMMAMISH PUBLIC WORKS DEVELOPMENT REVIEW

These drawings have been reviewed for compliance with City of Sammamish Clearing and Grading and Stormwater requirements and also in accordance with the requirements as established in the Settlement Agreement between King County vs. City of Sammamish No. C17-0921 JCC and King County vs. City of Sammamish No. 17-2-29922-7 SEA and have been deemed ACCEPTABLE. The reviewer accepts no responsibility for any errors and/or omissions made by the preparer of these drawings.

17 February 2022

REVISIONS	DATE	BY	DESIGNED
			M. TSUN
			B. PURGANAN
			Y. HO
			J. BAILEY

ONE INCH AT FULL SCALE.
IF NOT, SCALE ACCORDINGLY
FILE NAME
BL1521075P19T03DP-01
JOB No.
554-1521-075 P19 T03
DATE
JUNE 2021



Parametrix
ENGINEERING · PLANNING · ENVIRONMENTAL SCIENCES
719 2ND AVENUE, SUITE 200 | SEATTLE, WA 98104
P 206.394.3700
WWW.PARAMETRIX.COM

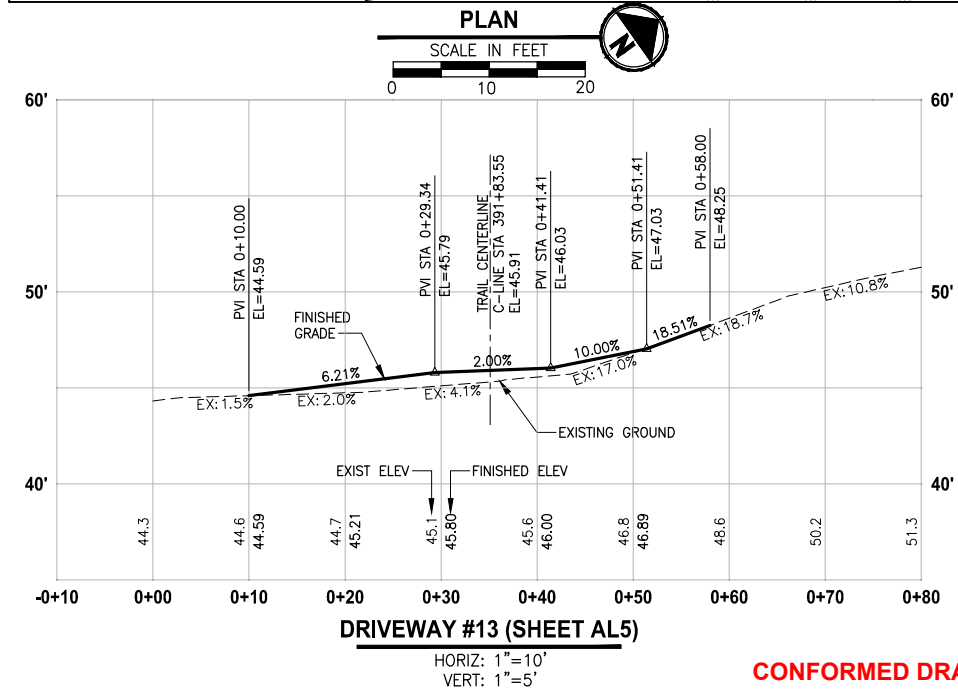
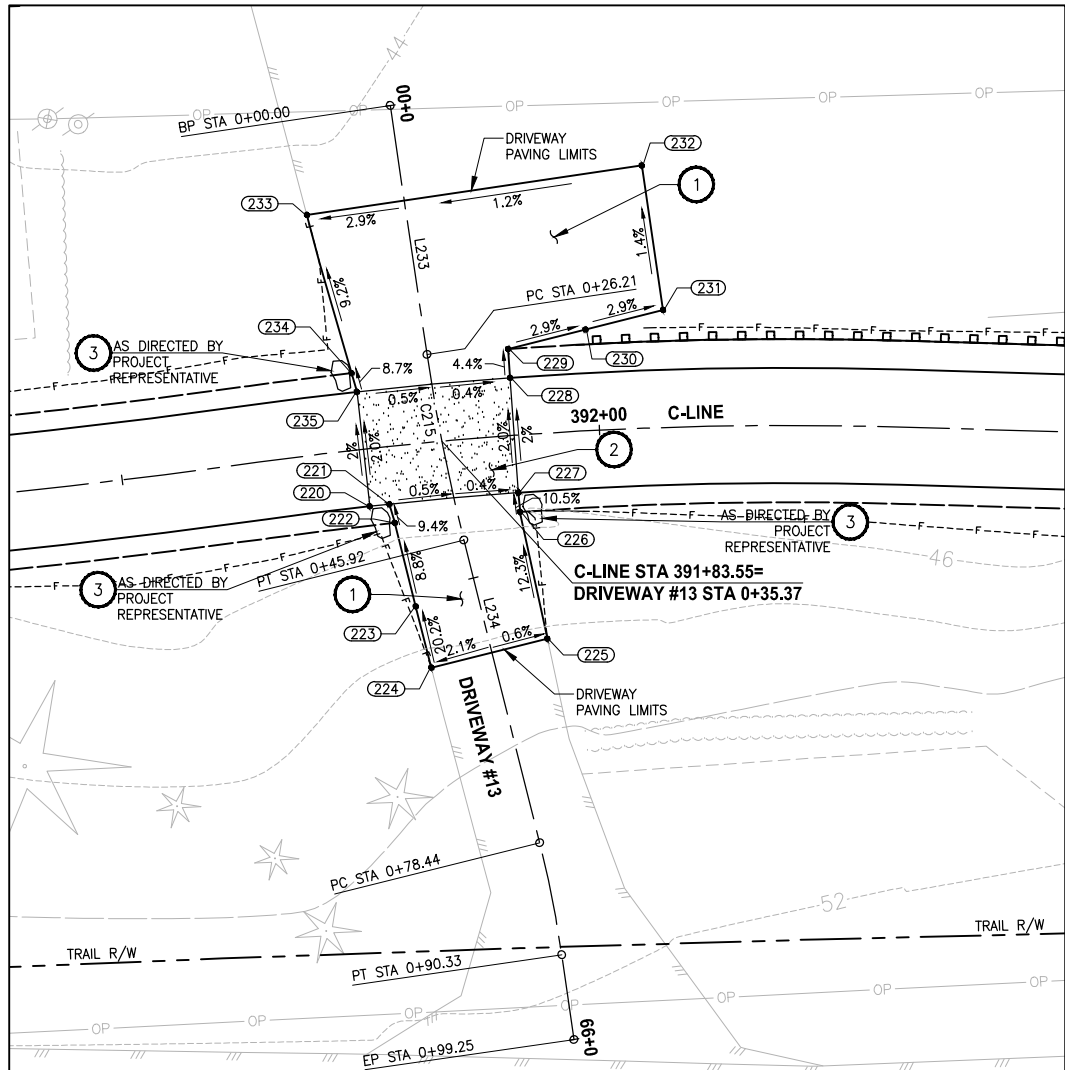
PROJECT NAME
**EAST LAKE SAMMAMISH
MASTER PLAN TRAIL
SOUTH SAMMAMISH SEGMENT B - PHASE 2**
SAMMAMISH, WA

DRIVEWAY PLAN AND PROFILE

SHEET NO.
96 OF 213

DP3

U:\PSO\Projects\Clients\1521-KingCo\554-1521-075-ELST\99Sect\CADD\Phase 19\T03 Civil\Draw-Phase2\ PLOTTED BY: purgaban DATE: Monday, June 14, 2021 5:30:19 PM LAYOUT: DP4



DRIVEWAY #13 POINT TABLE				
POINT #	C-LINE STATION	OFFSET	ELEVATION	DESCRIPTION
220	391+75.33	6.00' RT	46.07	CONC-ASPH
221	391+77.42	6.00' RT	46.06	CONC-ASPH
222	391+77.77	8.00' RT	46.24	AP-ASPH
223	391+79.10	16.87' RT	47.03	GRADE BREAK
224	391+80.13	23.39' RT	48.36	ME-ASPH
225	391+93.14	21.38' RT	48.24	ME-ASPH
226	391+91.15	8.00' RT	46.21	AP-ASPH
227	391+91.11	6.00' RT	46.00	CONC-ASPH
228	391+91.11	6.00' LT	45.76	CONC-ASPH
229	391+91.11	9.00' LT	45.63	AP-ASPH
230	391+99.10	10.54' LT	45.39	CONTROL POINT
231	392+07.02	12.24' LT	45.15	ME-ASPH
232	392+05.39	27.35' LT	44.93	ME-ASPH
233	391+72.37	24.90' LT	44.32	ME-ASPH
234	391+74.99	8.00' LT	45.64	AP-ASPH
235	391+75.33	6.00' LT	45.83	CONC-ASPH

DRIVEWAY #13 LINE TABLE						
LINE	LENGTH	BEARING	BEGIN EASTING	BEGIN NORTHING	END EASTING	END NORTHING
L233	26.21	S63° 07' 06"E	1333428.20	222817.38	1333451.58	222805.53
L234	32.52	S68° 45' 53"E	1333469.57	222797.50	1333499.88	222785.72

DRIVEWAY #13 CURVE TABLE						
CURVE	LENGTH	RADIUS	DELTA	BEGIN EASTING	BEGIN NORTHING	END EASTING
C215	19.71	200.00	5°38'47"	1333451.58	222805.53	1333469.57

- CONSTRUCTION NOTES:**
- HMA DRIVEWAY PAVEMENT SECTION SHALL BE 4" HMA CL 1/2 PG 64-22 OVER 8" CRUSHED SURFACING BASE COURSE.
 - PATTERNED CONCRETE INTERSECTION, SEE **1 MD4**
 - ROCK WALL, SEE **1 MD1**

- LEGEND:**
- PATTERNED CONCRETE DRIVEWAY
 - HMA
 - GRAVEL DRIVEWAY

CITY OF SAMMAMISH PUBLIC WORKS DEVELOPMENT REVIEW

These drawings have been reviewed for compliance with City of Sammamish Clearing and Grading and Stormwater requirements and also in accordance with the requirements as established in the Settlement Agreement between King County vs. City of Sammamish No. C17-0921 JCC and King County vs. City of Sammamish No. 17-2-29922-7 SEA and have been deemed **ACCEPTABLE**. The reviewer accepts no responsibility for any errors and/or omissions made by the preparer of these drawings.

17 February 2022

Date

REVISIONS	DATE	BY	DESIGNED
			M. TSUN
			DRAWN
			B. PURGANAN
			CHECKED
			Y. HO
			APPROVED
			J. BAILEY

ONE INCH AT FULL SCALE. IF NOT, SCALE ACCORDINGLY

FILE NAME
BL1521075P19T03DP-01

JOB No.
554-1521-075 P19 T03

DATE
JUNE 2021



6/14/21

Parametrix
ENGINEERING · PLANNING · ENVIRONMENTAL SCIENCES

719 2ND AVENUE, SUITE 200 | SEATTLE, WA 98104
P 206.394.3700
WWW.PARAMETRIX.COM

PROJECT NAME

**EAST LAKE SAMMAMISH
MASTER PLAN TRAIL
SOUTH SAMMAMISH SEGMENT B - PHASE 2**

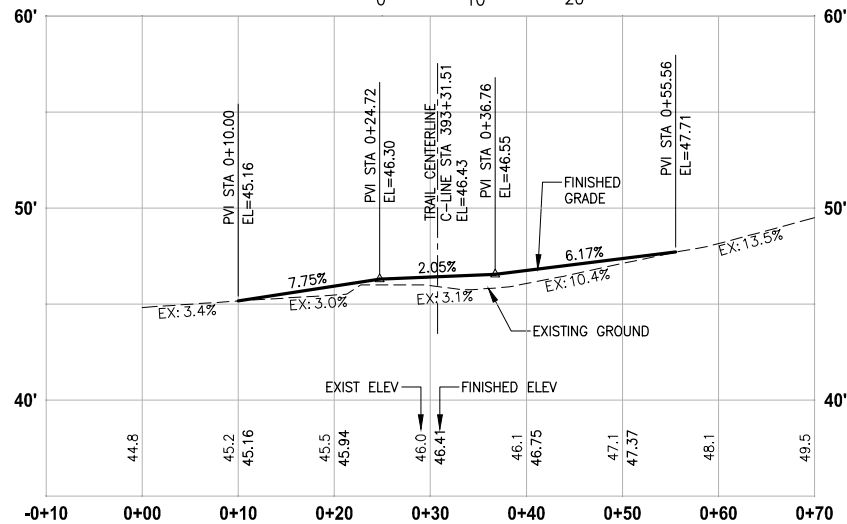
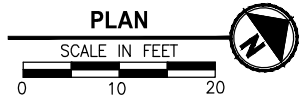
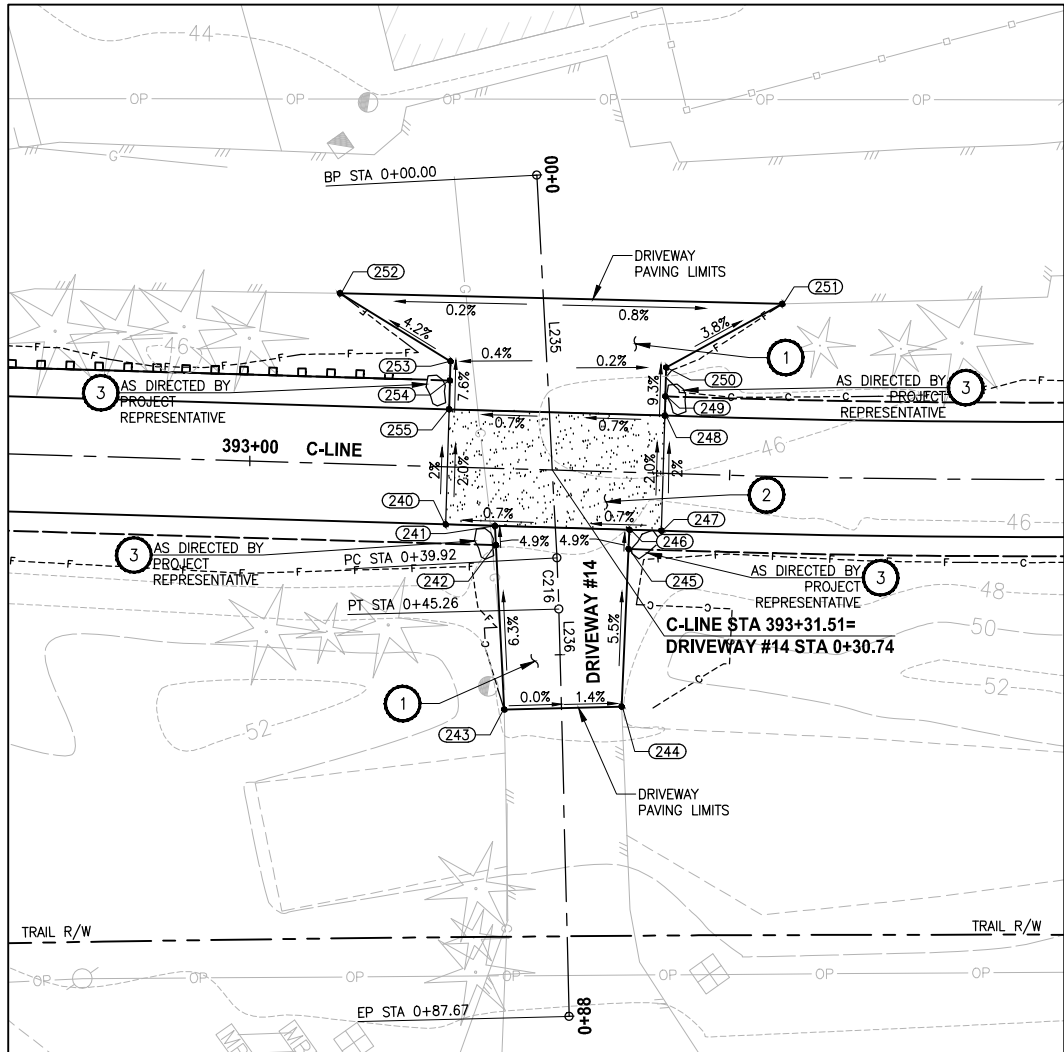
SAMMAMISH, WA

DRIVEWAY PLAN AND PROFILE

SHEET NO.
97 OF 213

DP4

U:\P50\Projects\Clients\1521-KingCo\554-1521-075-ELST\99Sect\CADD\Phase 19\T03 Civil\Draw-Phase2\ PLOTTED BY: purgbut DATE: Monday, June 14, 2021 5:30:28 PM LAYOUT: DP5



DRIVEWAY #14 (SHEET AL5)

HORIZ: 1"=10'
VERT: 1"=5'

CONFORMED DRAWINGS

DRIVEWAY #14 POINT TABLE				
POINT #	C-LINE STATION	OFFSET	ELEVATION	DESCRIPTION
240	393+20.59	6.00' RT	46.47	CONC-ASPH
241	393+25.72	6.00' RT	46.51	CONC-ASPH
242	393+25.88	8.00' RT	46.63	GRADE BREAK
243	393+27.25	25.09' RT	47.71	ME-ASPH
244	393+39.45	24.42' RT	47.62	ME-ASPH
245	393+39.70	8.00' RT	46.72	GRADE BREAK
246	393+39.73	6.00' RT	46.61	CONC-ASPH
247	393+43.06	6.00' RT	46.63	CONC-ASPH
248	393+43.06	6.00' LT	46.39	CONC-ASPH
249	393+43.06	8.00' LT	46.20	CONTROL POINT
250	393+43.06	11.00' LT	45.98	AP-ASPH
251	393+55.03	17.97' LT	45.46	ME-ASPH
252	393+08.88	17.73' LT	45.29	ME-ASPH
253	393+20.59	11.00' LT	45.85	AP-ASPH
254	393+20.59	9.00' LT	46.00	CONTROL POINT
255	393+20.59	6.00' LT	46.23	CONC-ASPH

DRIVEWAY #14 LINE TABLE						
LINE	LENGTH	BEARING	BEGIN EASTING	BEGIN NORTHING	END EASTING	END NORTHING
L235	39.92	S57° 42' 12"E	1333520.47	222937.86	1333554.22	222916.53
L236	42.41	S56° 10' 28"E	1333558.69	222913.62	1333593.92	222890.01

DRIVEWAY #14 CURVE TABLE						
CURVE	LENGTH	RADIUS	DELTA	BEGIN EASTING	BEGIN NORTHING	END EASTING
C216	5.34	200.00	1°31'44"	1333554.22	222916.53	1333558.69
						222913.62

CONSTRUCTION NOTES:

- HMA DRIVEWAY PAVEMENT SECTION SHALL BE 4" HMA CL 1/2 PG 64-22 OVER 8" CRUSHED SURFACING BASE COURSE.
- PATTERNED CONCRETE INTERSECTION, SEE **1** MD4
- ROCK WALL, SEE **1** MD1

LEGEND:

- PATTERNED CONCRETE DRIVEWAY
- HMA
- GRAVEL DRIVEWAY

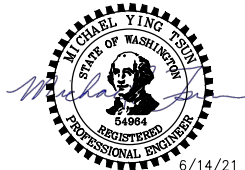
CITY OF SAMMAMISH PUBLIC WORKS DEVELOPMENT REVIEW

These drawings have been reviewed for compliance with City of Sammamish Clearing and Grading and Stormwater requirements and also in accordance with the requirements as established in the Settlement Agreement between King County vs. City of Sammamish No. C17-0921 JCC and King County vs. City of Sammamish No. 17-2-29922-7 SEA and have been deemed **ACCEPTABLE**. The reviewer accepts no responsibility for any errors and/or omissions made by the preparer of these drawings.

17 February 2022

REVISIONS	DATE	BY	DESIGNED
			M. TSUN
			B. PURGANAN
			Y. HO
			J. BAILEY

ONE INCH AT FULL SCALE, IF NOT, SCALE ACCORDINGLY	
FILE NAME	BL1521075P19T03DP-01
JOB No.	554-1521-075 P19 T03
DATE	JUNE 2021



Parametrix
ENGINEERING · PLANNING · ENVIRONMENTAL SCIENCES

719 2ND AVENUE, SUITE 200 | SEATTLE, WA 98104
P 206.394.3700
WWW.PARAMETRIX.COM

PROJECT NAME

**EAST LAKE SAMMAMISH
MASTER PLAN TRAIL
SOUTH SAMMAMISH SEGMENT B - PHASE 2**

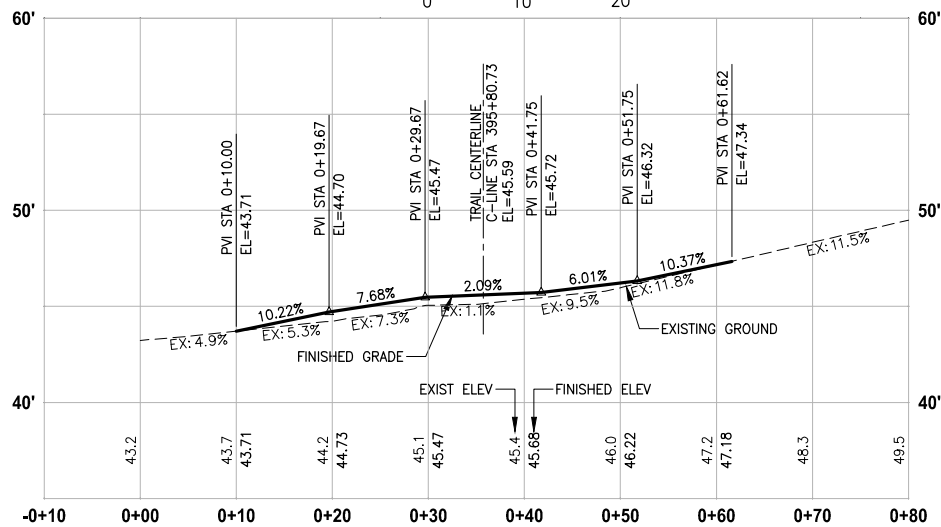
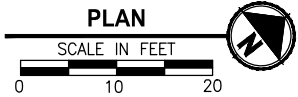
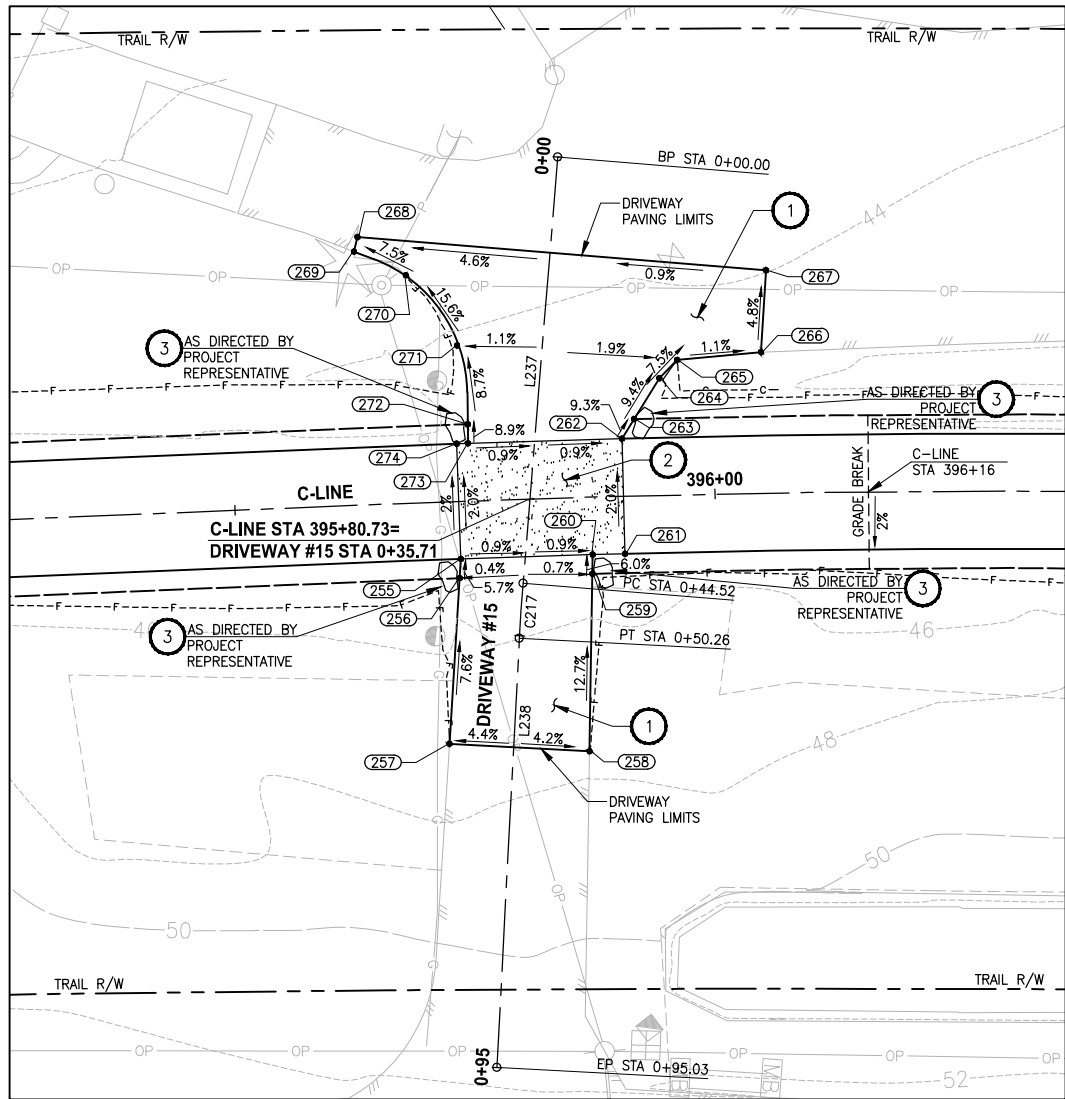
SAMMAMISH, WA

DRIVEWAY PLAN AND PROFILE

SHEET NO.
98 OF 213

DP5

U:\PSO\Projects\Clients\1521-KingCo\554-1521-075-ELST\99Sect\CADD\Phase 19\T03 Civil\Draw-Phase2 PLOTTED BY: purgbut DATE: Monday, June 14, 2021 5:30:40 PM LAYOUT: DP6



DRIVEWAY #15 (SHEET AL6)

HORIZ: 1"=10'
VERT: 1"=5'

CONFORMED DRAWINGS

DRIVEWAY #15 POINT TABLE				
POINT #	C-LINE STATION	OFFSET	ELEVATION	DESCRIPTION
255	395+73.32	6.00' RT	45.75	CONC-ASPH
256	395+73.12	8.00' RT	45.87	ME-ASPH
257	395+71.38	25.19' RT	47.05	ME-ASPH
258	395+86.19	26.44' RT	47.67	ME-ASPH
259	395+87.01	8.00' RT	45.78	ME-ASPH
260	395+87.12	6.00' RT	45.66	CONC-ASPH
261	395+90.48	6.00' RT	45.63	CONC-ASPH
262	395+90.48	6.00' LT	45.39	CONC-ASPH
263	395+91.78	8.00' LT	45.17	ME-ASPH
264	395+94.50	12.18' LT	44.70	AP-ASPH
265	395+96.38	14.06' LT	44.50	AP-ASPH
266	396+05.04	14.67' LT	44.40	ME-ASPH
267	396+05.69	23.20' LT	43.99	ME-ASPH
268	395+63.91	27.90' LT	42.78	ME-ASPH
269	395+63.48	26.41' LT	43.35	ME-ASPH
270	395+68.73	23.73' LT	43.29	CURVE PT
271	395+73.74	16.21' LT	44.61	CURVE MIDPOINT
272	395+74.54	8.00' LT	45.34	CURVE PC
273	395+74.50	6.00' LT	45.52	CONC-ASPH
274	395+73.32	6.00' LT	45.51	CONC-ASPH

DRIVEWAY #15 LINE TABLE						
LINE	LENGTH	BEARING	BEGIN EASTING	BEGIN NORTHING	END EASTING	END NORTHING
L237	44.52	S47° 45' 46"E	1333664.69	223148.35	1333697.66	223118.42
L238	44.77	S49° 24' 26"E	1333701.96	223114.63	1333735.95	223085.50

DRIVEWAY #15 CURVE TABLE							
CURVE	LENGTH	RADIUS	DELTA	BEGIN EASTING	BEGIN NORTHING	END EASTING	END NORTHING
C217	5.74	200.00	1°38'40"	1333697.66	223118.42	1333701.96	223114.63

CONSTRUCTION NOTES:

- HMA DRIVEWAY PAVEMENT SECTION SHALL BE 4" HMA CL 1/2 PG 64-22 OVER 8" CRUSHED SURFACING BASE COURSE.
- PATTERNED CONCRETE INTERSECTION, SEE 1 MD4
- ROCK WALL, SEE 1 MD1

LEGEND:

- PATTERNED CONCRETE DRIVEWAY
- HMA
- GRAVEL DRIVEWAY

CITY OF SAMMAMISH PUBLIC WORKS DEVELOPMENT REVIEW

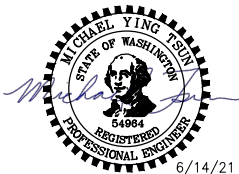
These drawings have been reviewed for compliance with City of Sammamish Clearing and Grading and Stormwater requirements and also in accordance with the requirements as established in the Settlement Agreement between King County vs. City of Sammamish No. C17-0921 JCC and King County vs. City of Sammamish No. 17-2-29922-7 SEA and have been deemed ACCEPTABLE. The reviewer accepts no responsibility for any errors and/or omissions made by the preparer of these drawings.

17 February 2022

Date

REVISIONS	DATE	BY	DESIGNED
			M. TSUN
			B. PURGANAN
			Y. HO
			J. BAILEY

ONE INCH AT FULL SCALE.
IF NOT, SCALE ACCORDINGLY
FILE NAME
BL1521075P19T03DP-01
JOB No.
554-1521-075 P19 T03
DATE
JUNE 2021



Parametrix
ENGINEERING · PLANNING · ENVIRONMENTAL SCIENCES
719 2ND AVENUE, SUITE 200 | SEATTLE, WA 98104
P 206.394.3700
WWW.PARAMETRIX.COM

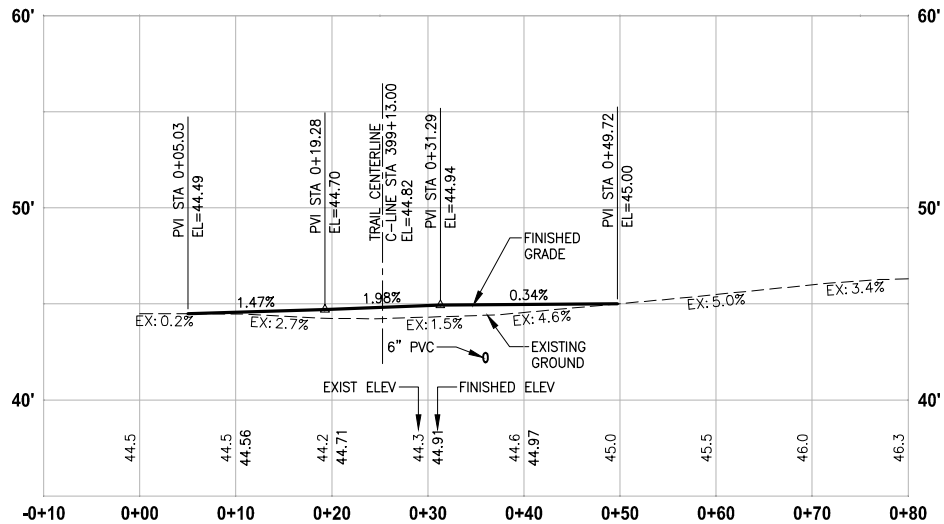
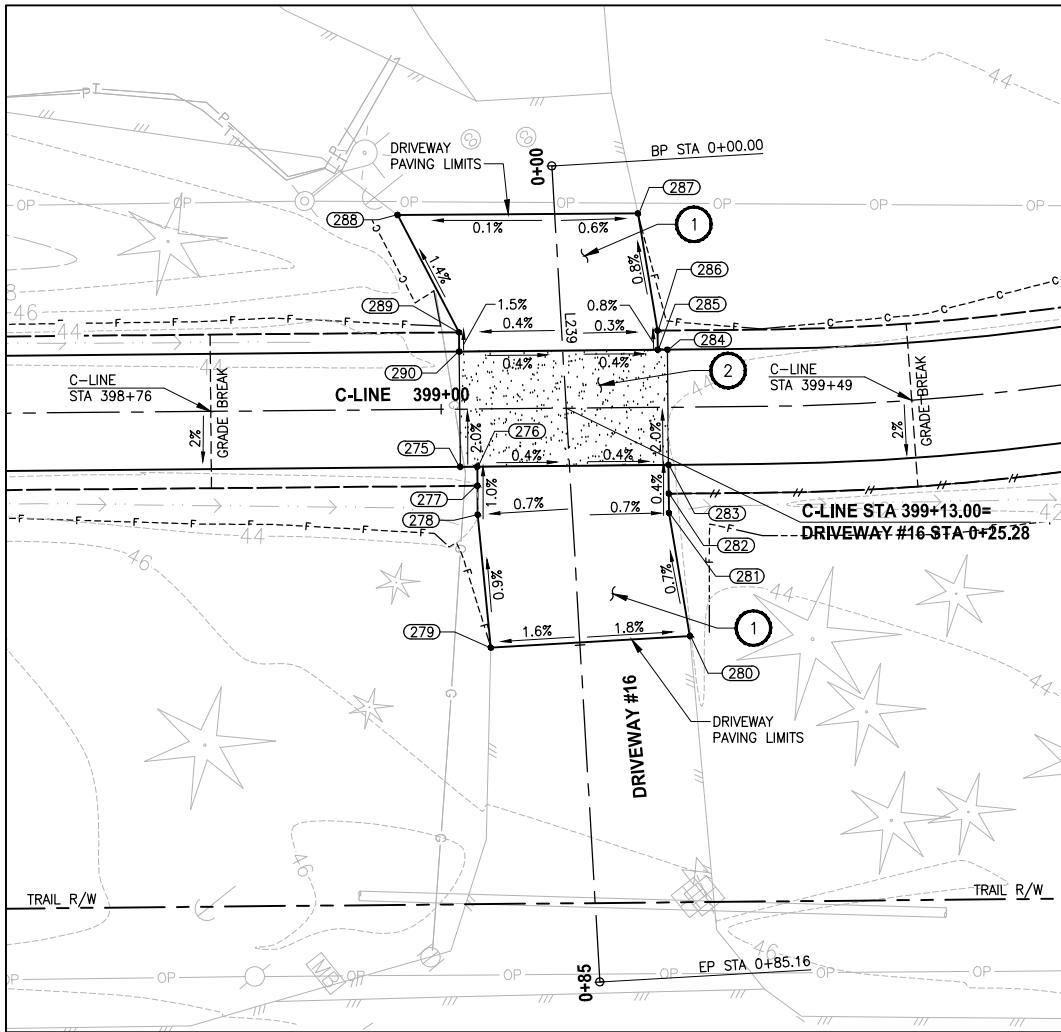
PROJECT NAME
**EAST LAKE SAMMAMISH
MASTER PLAN TRAIL
SOUTH SAMMAMISH SEGMENT B - PHASE 2**
SAMMAMISH, WA

DRIVEWAY PLAN AND PROFILE

SHEET NO.
99 OF 213

DP6

U:\PSO\Projects\Clients\1521-KingCo\554-1521-075-ELST\99Ses\CA00\Phase 19\T03 Civil\Draw-Phase2\ PLOTTED BY: purgbut DATE: Monday, June 14, 2021 5:30:48 PM LAYOUT: DP7



CONFORMED DRAWINGS

DRIVEWAY #16 POINT TABLE

POINT #	C-LINE STATION	OFFSET	ELEVATION	DESCRIPTION
275	399+01.93	6.00' RT	44.98	CONC-ASPH
276	399+03.70	6.00' RT	44.97	CONC-ASPH
277	399+03.70	8.00' RT	44.99	CONTROL POINT
278	399+03.70	11.01' RT	45.02	AP-ASPH
279	399+04.93	24.87' RT	45.15	ME-ASPH
280	399+25.68	23.84' RT	44.79	ME-ASPH
281	399+23.61	11.00' RT	44.88	AP-ASPH
282	399+23.61	9.00' RT	44.89	CONTROL POINT
283	399+23.61	6.00' RT	44.90	CONC-ASPH
284	399+23.61	6.00' LT	44.66	CONC-ASPH
285	399+22.60	6.00' LT	44.66	CONC-ASPH
286	399+22.60	8.00' LT	44.64	AP-ASPH
287	399+20.67	20.21' LT	44.55	ME-ASPH
288	398+95.63	20.28' LT	44.51	ME-ASPH
289	399+01.93	8.00' LT	44.71	AP-ASPH
290	399+01.93	6.00' LT	44.74	CONC-ASPH

DRIVEWAY #16 LINE TABLE

LINE	LENGTH	BEARING	BEGIN EASTING	BEGIN NORTHING	END EASTING	END NORTHING
L239	85.16	S54° 26' 35"E	1333875.63	223400.47	1333944.91	223350.95

CONSTRUCTION NOTES:

- HMA DRIVEWAY PAVEMENT SECTION SHALL BE 4" HMA CL 1/2 PG 64-22 OVER 8" CRUSHED SURFACING BASE COURSE.
- PATTERNED CONCRETE INTERSECTION, SEE 1 MD4
- ROCK WALL, SEE 1 MD1

LEGEND:

- PATTERNED CONCRETE DRIVEWAY
- HMA
- GRAVEL DRIVEWAY

CITY OF SAMMAMISH PUBLIC WORKS DEVELOPMENT REVIEW

These drawings have been reviewed for compliance with City of Sammamish Clearing and Grading and Stormwater requirements and also in accordance with the requirements as established in the Settlement Agreement between King County vs. City of Sammamish No. C17-0921 JCC and King County vs. City of Sammamish No. 17-2-29922-7 SEA and have been deemed ACCEPTABLE. The reviewer accepts no responsibility for any errors and/or omissions made by the preparer of these drawings.

17 February 2022

REVISIONS	DATE	BY	DESIGNED
			M. TSUN
			DRAWN
			B. PURGANAN
			CHECKED
			Y. HO
			APPROVED
			J. BAILEY

ONE INCH AT FULL SCALE. IF NOT, SCALE ACCORDINGLY

FILE NAME
BL1521075P19T03DP-01

JOB No.
554-1521-075 P19 T03

DATE
JUNE 2021



6/14/21

Parametrix
ENGINEERING · PLANNING · ENVIRONMENTAL SCIENCES

719 2ND AVENUE, SUITE 200 | SEATTLE, WA 98104
P 206.394.3700
WWW.PARAMETRIX.COM

PROJECT NAME

**EAST LAKE SAMMAMISH
MASTER PLAN TRAIL
SOUTH SAMMAMISH SEGMENT B - PHASE 2**

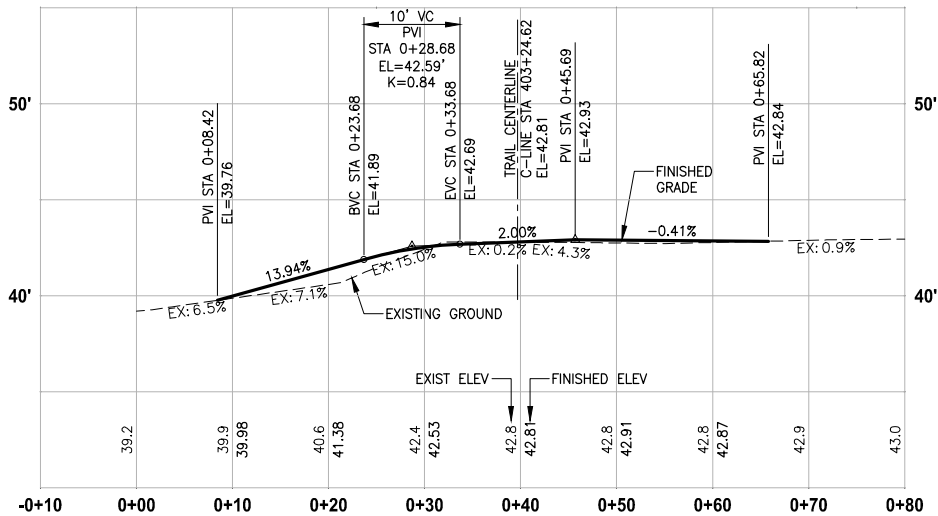
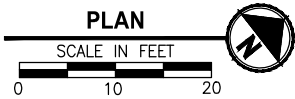
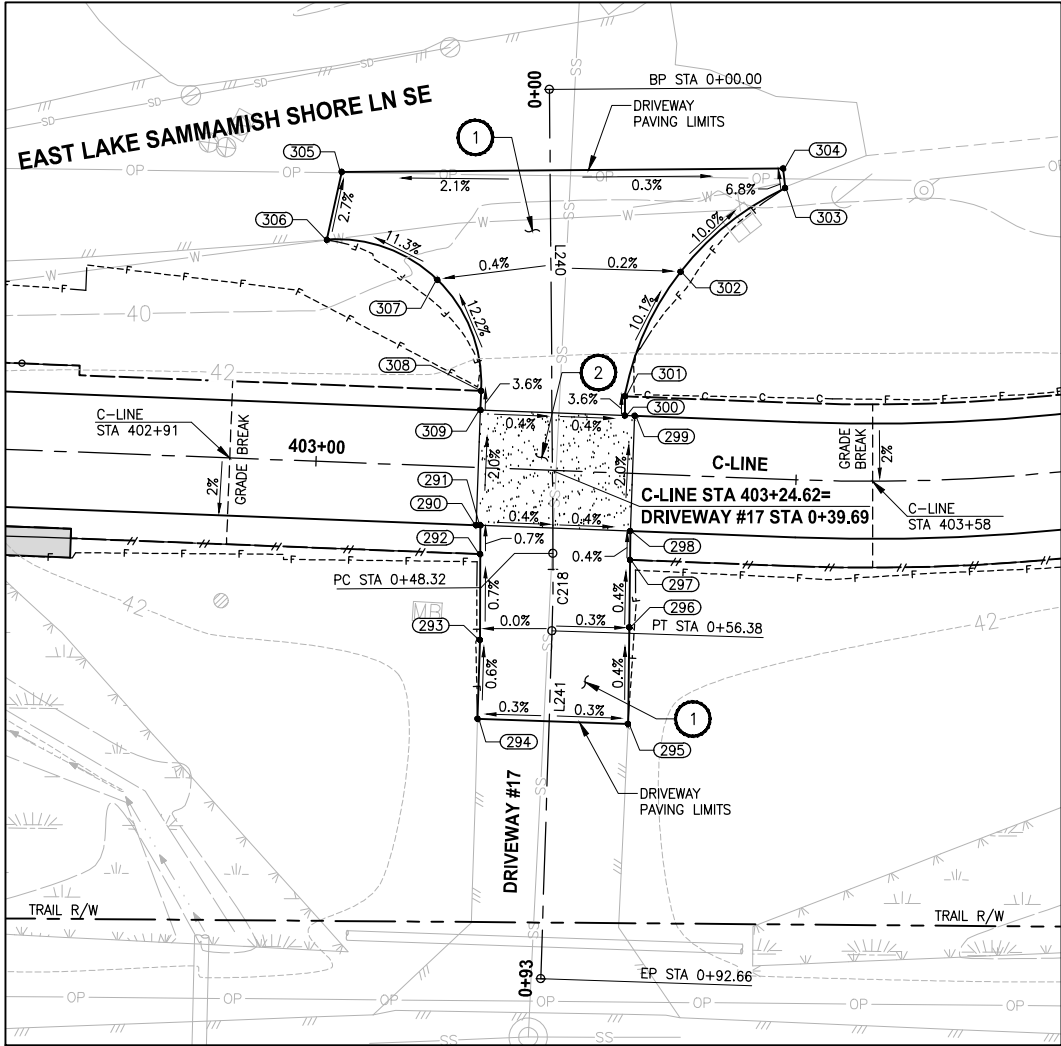
SAMMAMISH, WA

DRIVEWAY PLAN AND PROFILE

SHEET NO.
100 OF 213

DP7

U:\PSO\Projects\Clients\1521-KingCo\554-1521-075-ELST\99\Set\CAD\Phase 19\T03 Civil\Draw-Phase2\ PLOTTED BY: purgbut DATE: Monday, June 14, 2021 5:30:58 PM LAYOUT: DP8



DRIVEWAY #17 (SHEET AL7)

HORIZ: 1"=10'
VERT: 1"=5'

CONFORMED DRAWINGS

DRIVEWAY #17 POINT TABLE				
POINT #	C-LINE STATION	OFFSET	ELEVATION	DESCRIPTION
290	403+16.90	6.00' RT	42.95	CONC-ASPH
291	403+17.35	6.00' RT	42.95	CONC-ASPH
292	403+17.45	9.00' RT	42.93	CONTROL POINT
293	403+17.76	17.93' RT	42.87	AP
294	403+17.83	26.16' RT	42.82	ME-ASPH
295	403+33.52	26.07' RT	42.82	ME-ASPH
296	403+33.24	16.04' RT	42.86	CONTROL POINT
297	403+33.05	9.00' RT	42.89	CONTROL POINT
298	403+32.97	6.00' RT	42.90	CONC-ASPH
299	403+32.97	6.00' LT	42.66	CONC-ASPH
300	403+31.94	6.00' LT	42.66	CONC-ASPH
301	403+31.87	8.00' LT	42.59	CURVE PT
302	403+37.16	21.18' LT	41.18	CURVE MIDPOINT
303	403+47.71	30.33' LT	39.79	CURVE PC
304	403+47.43	32.34' LT	39.67	ME-ASPH
305	403+01.49	30.22' LT	39.43	ME-ASPH
306	403+00.23	23.10' LT	39.62	ME-CURVE PC
307	403+11.89	19.37' LT	41.12	CURVE MIDPOINT
308	403+16.89	8.00' LT	42.64	CURVE PT
309	403+16.89	6.00' LT	42.71	CONC-ASPH

DRIVEWAY #17 LINE TABLE						
LINE	LENGTH	BEARING	BEGIN EASTING	BEGIN NORTHING	END EASTING	END NORTHING
L240	48.32	S52° 30' 24"E	1334123.51	223729.52	1334161.84	223700.11
L241	36.27	S50° 11' 45"E	1334168.14	223695.07	1334196.01	223671.85

DRIVEWAY #17 CURVE TABLE						
CURVE	LENGTH	RADIUS	DELTA	BEGIN EASTING	BEGIN NORTHING	END EASTING
C218	8.07	200.00	2°18'39"	1334161.84	223700.11	1334168.14
						223695.07

CONSTRUCTION NOTES:

- HMA DRIVEWAY PAVEMENT SECTION SHALL BE 4" HMA CL 1/2 PG 64-22 OVER 8" CRUSHED SURFACING BASE COURSE.
- PATTERNED CONCRETE INTERSECTION, SEE 1 MD4
- ROCK WALL, SEE 1 MD1

LEGEND:

- PATTERNED CONCRETE DRIVEWAY
- HMA
- GRAVEL DRIVEWAY

CITY OF SAMMAMISH PUBLIC WORKS
DEVELOPMENT REVIEW
These drawings have been reviewed for compliance with City of Sammamish Clearing and Grading and Stormwater requirements and also in accordance with the requirements as established in the Settlement Agreement between King County vs. City of Sammamish No. C17-0921 JCC and King County vs. City of Sammamish No. 17-2-29922-7 SEA and have been deemed ACCEPTABLE. The reviewer accepts no responsibility for any errors and/or omissions made by the preparer of these drawings.
17 February 2022

REVISIONS	DATE	BY	DESIGNED
			M. TSUN
			B. PURGANAN
			Y. HO
			J. BAILEY

ONE INCH AT FULL SCALE.
IF NOT, SCALE ACCORDINGLY
FILE NAME
BL1521075P19T03DP-01
JOB No.
554-1521-075 P19 T03
DATE
JUNE 2021

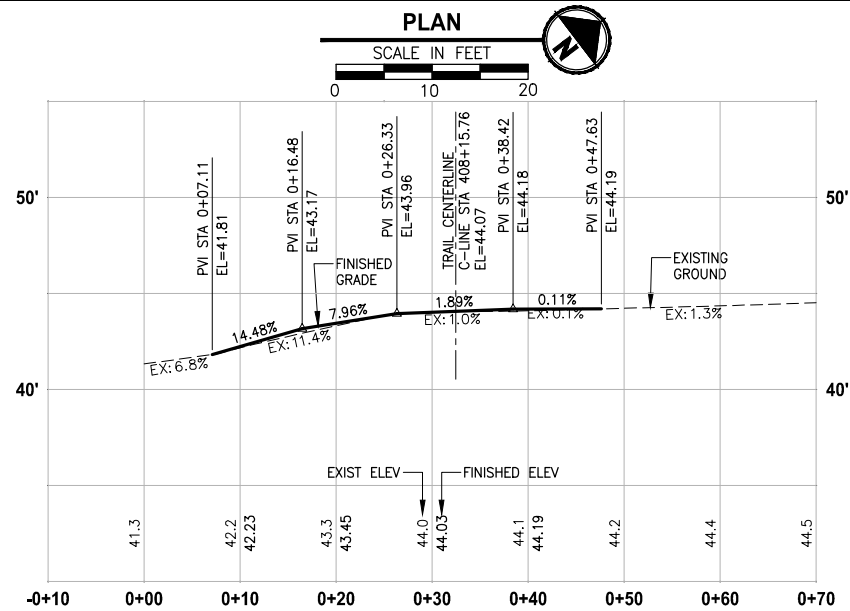
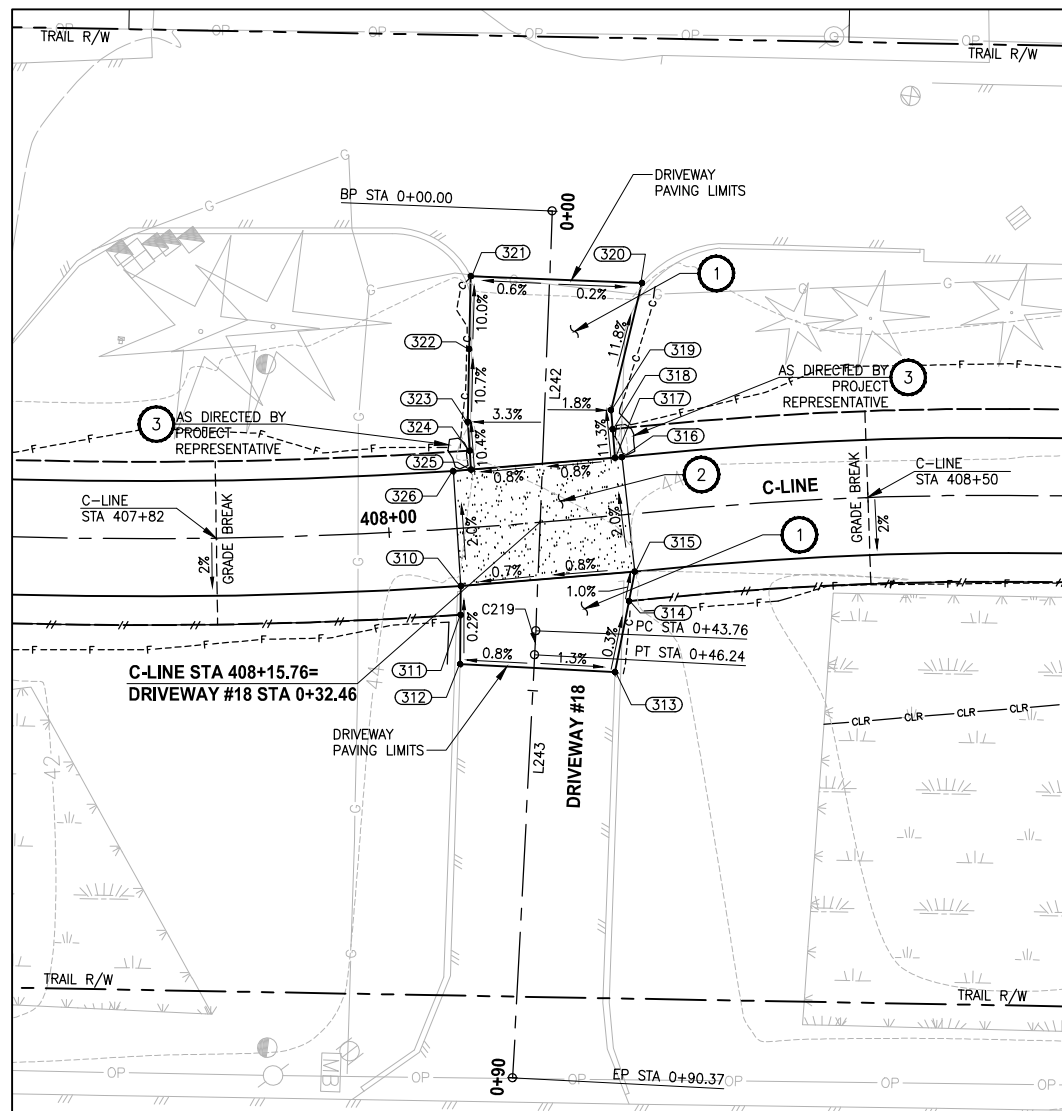


Parametrix
ENGINEERING · PLANNING · ENVIRONMENTAL SCIENCES
719 2ND AVENUE, SUITE 200 | SEATTLE, WA 98104
P 206.394.3700
WWW.PARAMETRIX.COM

PROJECT NAME
EAST LAKE SAMMAMISH
MASTER PLAN TRAIL
SOUTH SAMMAMISH SEGMENT B - PHASE 2
SAMMAMISH, WA

DRIVEWAY PLAN AND PROFILE

SHEET NO.
101 OF 213
DP8



DRIVEWAY #18 (SHEET AL8)

HORIZ: 1"=10'
VERT: 1"=5'

CONFORMED DRAWINGS

DRIVEWAY #18 POINT TABLE

POINT #	C-LINE STATION	OFFSET	ELEVATION	DESCRIPTION
310	408+07.10	6.00' RT	44.11	CONC-ASPH
311	408+06.88	9.00' RT	44.12	CONTROL POINT
312	408+06.52	14.11' RT	44.13	ME-ASPH
313	408+22.06	16.22' RT	44.30	ME-ASPH
314	408+24.16	9.00' RT	44.28	GRADE BREAK
315	408+25.05	6.00' RT	44.25	CONC-ASPH
316	408+24.92	6.00' LT	44.01	CONC-ASPH
317	408+24.20	6.01' LT	44.01	CONC-ASPH
318	408+24.25	9.00' LT	43.75	CONTROL POINT
319	408+24.28	11.01' LT	43.38	AP-ASPH
320	408+28.71	23.85' LT	41.83	ME-ASPH
321	408+10.40	26.13' LT	41.78	ME-ASPH
322	408+09.67	18.58' LT	42.54	CONTROL POINT
323	408+08.96	11.03' LT	43.35	AP-ASPH
324	408+08.96	8.00' LT	43.67	CONTROL POINT
325	408+08.96	6.03' LT	43.87	CONC-ASPH
326	408+07.09	6.00' LT	43.87	CONC-ASPH



DRIVEWAY #18 LINE TABLE

LINE	LENGTH	BEARING	BEGIN EASTING	BEGIN NORTHING	END EASTING	END NORTHING
L242	43.76	S50° 22' 34"E	1334432.92	224112.33	1334466.63	224084.43
L243	44.13	S49° 39' 52"E	1334468.53	224082.83	1334502.17	224054.27




DRIVEWAY #18 CURVE TABLE

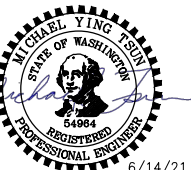
CURVE	LENGTH	RADIUS	DELTA	BEGIN EASTING	BEGIN NORTHING	END EASTING	END NORTHING
C219	2.48	200.00	0°42'42"	1334466.63	224084.43	1334468.53	224082.83

CONSTRUCTION NOTES:

- 1 HMA DRIVEWAY PAVEMENT SECTION SHALL BE 4" HMA CL 1/2 PG 64-22 OVER 8" CRUSHED SURFACING BASE COURSE.
- 2 PATTERNED CONCRETE INTERSECTION, SEE 
- 3 ROCK WALL, SEE 

LEGEND:

-  PATTERNED CONCRETE DRIVEWAY
-  HMA
-  GRAVEL DRIVEWAY



6/14/21

Parametrix
ENGINEERING . PLANNING . ENVIRONMENTAL SCIENCES

719 2ND AVENUE, SUITE 200 | SEATTLE, WA 98104
P 206.394.3700
WWW.PARAMETRIX.COM

PROJECT NAME

**EAST LAKE SAMMAMISH
MASTER PLAN TRAIL
SOUTH SAMMAMISH SEGMENT B - PHASE 2**

SAMMAMISH, WA

DRIVEWAY PLAN AND PROFILE

SHEET NO.
102 OF 213

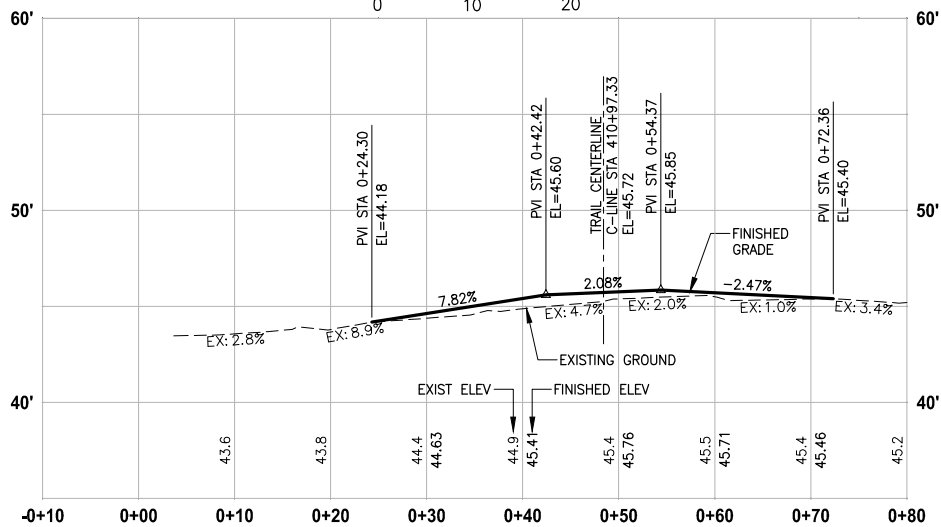
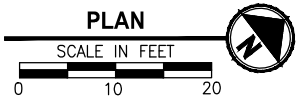
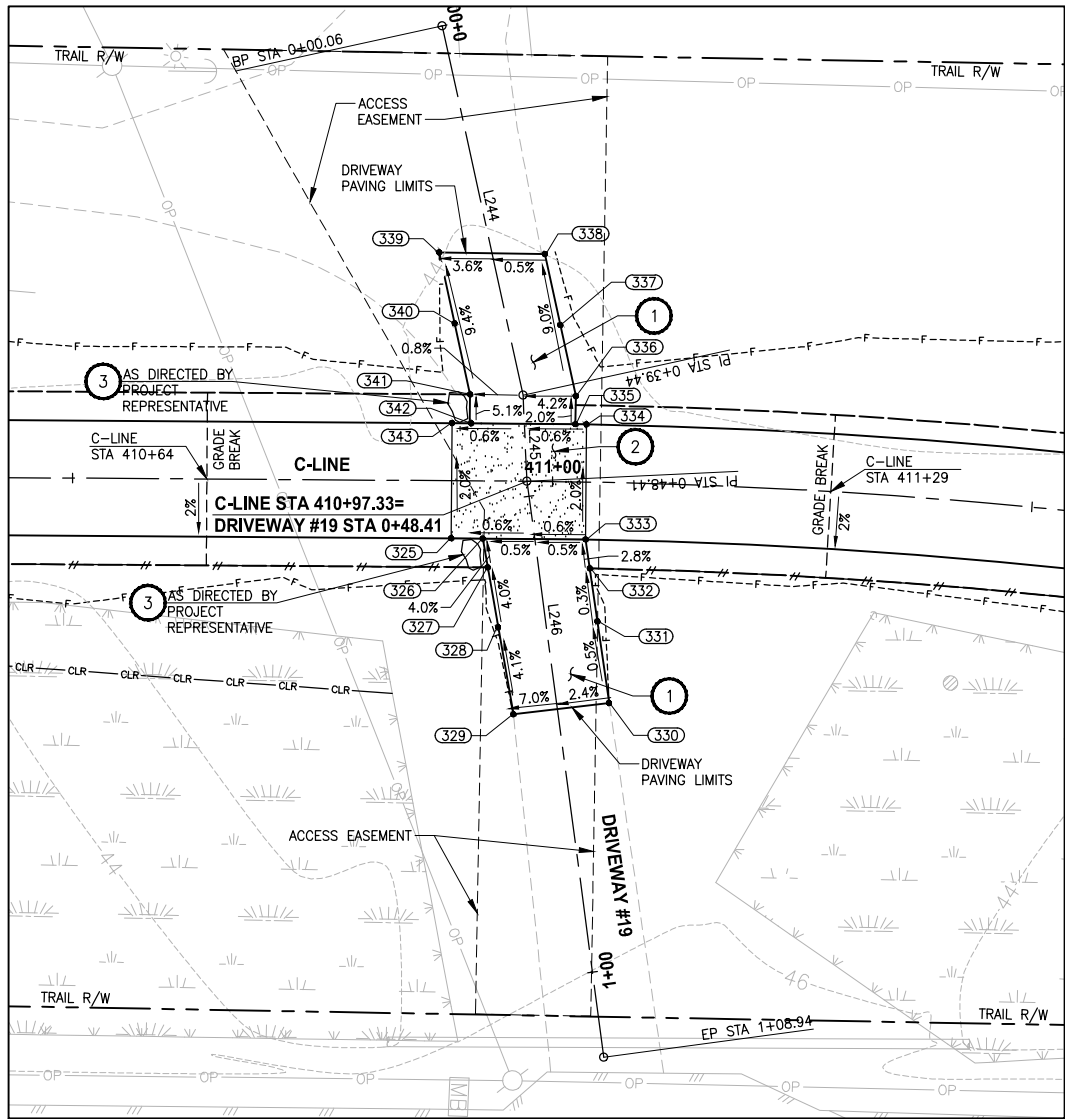
DP9

CITY OF SAMMAMISH PUBLIC WORKS
DEVELOPMENT REVIEW

These drawings have been reviewed for compliance with City of Sammamish Clearing and Grading and Stormwater requirements and also in accordance with the requirements as established in the Settlement Agreement between King County vs. City of Sammamish No. C17-0921 JCC and King County vs. City of Sammamish No. 17-2-29922-7 SEA and have been deemed ACCEPTABLE. The reviewer accepts no responsibility for any errors and/or omissions made by the preparer of these drawings.

17 February 2022

U:\PSO\Projects\Clients\1521-KingCo\1521-075-ELST\995vec\CADD\Phase 19\T03 Civil\Draw-Phase2\ LAYOUT: DP10 PATH: U:\PSO\Projects\Clients\1521-KingCo\1521-075-ELST\995vec\CADD\Phase 19\T03 Civil\Draw-Phase2\ PLOTTED BY: purgubut DATE: Monday, June 14, 2021 5:31:23 PM



DRIVEWAY #19 (SHEET AL9)

HORIZ: 1"=10'
VERT: 1"=5'

CONFORMED DRAWINGS



6/14/21

Parametrix
ENGINEERING · PLANNING · ENVIRONMENTAL SCIENCES
719 2ND AVENUE, SUITE 200 | SEATTLE, WA 98104
P 206.394.3700
WWW.PARAMETRIX.COM

PROJECT NAME
**EAST LAKE SAMMAMISH
MASTER PLAN TRAIL
SOUTH SAMMAMISH SEGMENT B - PHASE 2**
SAMMAMISH, WA

DRIVEWAY PLAN AND PROFILE

SHEET NO.
103 OF 213
DP10

CONSTRUCTION NOTES:

- 1 HMA DRIVEWAY PAVEMENT SECTION SHALL BE 4" HMA CL 1/2 PG 64-22 OVER 8" CRUSHED SURFACING BASE COURSE.
- 2 PATTERNED CONCRETE INTERSECTION, SEE 1 MD4
- 3 ROCK WALL, SEE 1 MD1

LEGEND:

- PATTERNED CONCRETE DRIVEWAY
- HMA
- GRAVEL DRIVEWAY

DRIVEWAY #19 POINT TABLE				
POINT #	C-LINE STATION	OFFSET	ELEVATION	DESCRIPTION
325	410+89.49	6.00' RT	45.80	CONC-ASPH
326	410+92.77	6.00' RT	45.82	CONC-ASPH
327	410+93.31	9.00' RT	45.70	CONTROL POINT
328	410+94.44	15.21' RT	45.44	GRADE BREAK
329	410+96.09	24.29' RT	45.07	ME-ASPH
330	411+06.39	22.98' RT	45.46	ME-ASPH
331	411+04.95	14.49' RT	45.92	GRADE BREAK
332	411+04.04	9.00' RT	45.89	CONTROL POINT
333	411+03.55	6.00' RT	45.88	CONC-ASPH
334	411+03.42	6.00' LT	45.63	CONC-ASPH
335	411+02.28	6.00' LT	45.63	CONC-ASPH
336	411+02.28	8.93' LT	45.60	AP-ASPH
337	411+00.60	16.30' LT	44.90	CONTROL POINT
338	410+98.95	23.68' LT	44.20	ME-ASPH
339	410+88.02	23.77' LT	43.97	ME-ASPH
340	410+89.69	16.39' LT	44.70	CONTROL POINT
341	410+91.36	9.00' LT	45.43	AP-ASPH
342	410+91.49	6.00' LT	45.57	CONC-ASPH
343	410+89.49	6.00' LT	45.56	CONC-ASPH

DRIVEWAY #19 LINE TABLE						
LINE	LENGTH	BEARING	BEGIN EASTING	BEGIN NORTHING	END EASTING	END NORTHING
L244	39.38	S64° 57' 44"E	1334584.70	224337.86	1334620.38	224321.19
L245	8.97	S55° 16' 19"E	1334620.38	224321.19	1334627.75	224316.08
L246	60.53	S60° 14' 43"E	1334627.75	224316.08	1334680.29	224286.05

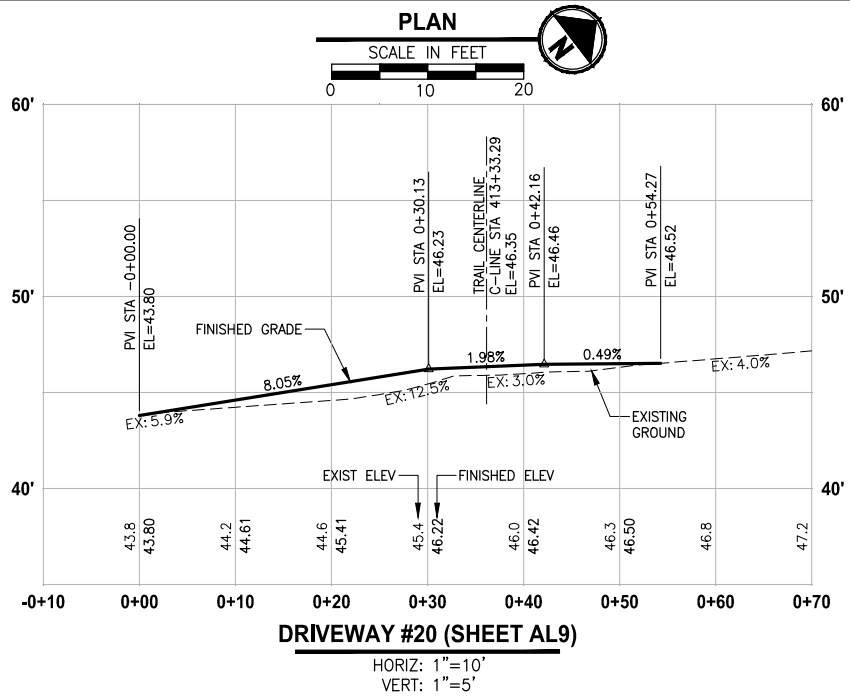
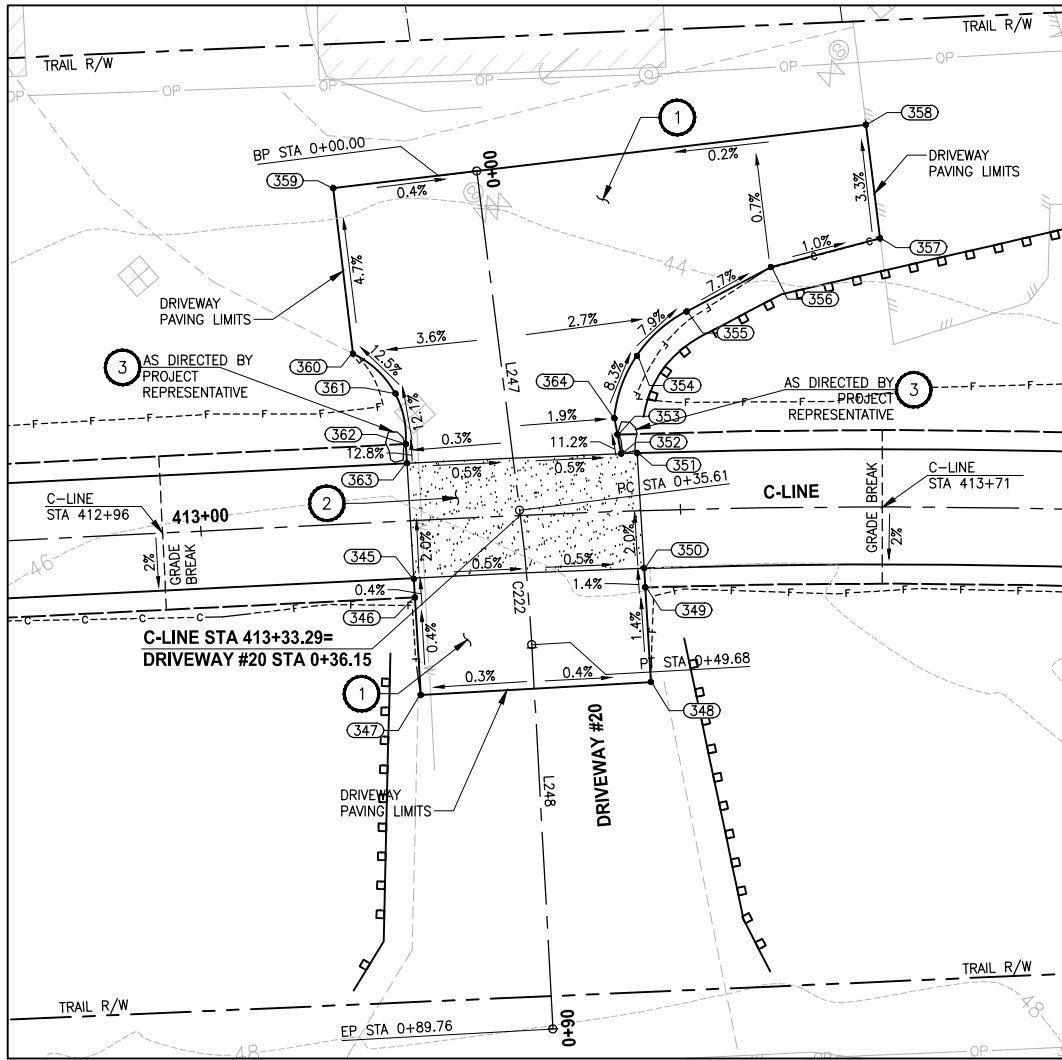
**CITY OF SAMMAMISH PUBLIC WORKS
DEVELOPMENT REVIEW**
These drawings have been reviewed for compliance with City of Sammamish Clearing and Grading and Stormwater requirements and also in accordance with the requirements as established in the Settlement Agreement between King County vs. City of Sammamish No. C17-0921 JCC and King County vs. City of Sammamish No. 17-2-29922-7 SEA and have been deemed ACCEPTABLE. The reviewer accepts no responsibility for any errors and/or omissions made by the preparer of these drawings.
17 February 2022

CITY OF SAMMAMISH APPROVAL	
City Engineer	Date
Community Development	Date

REVISIONS	DATE	BY	DESIGNED
			M. TSUN
			DRAWN
			B. PURGANAN
			CHECKED
			Y. HO
			APPROVED
			J. BAILEY

ONE INCH AT FULL SCALE.
IF NOT, SCALE ACCORDINGLY
FILE NAME
BL1521075P19T03DP-01
JOB No.
554-1521-075 P19 T03
DATE
JUNE 2021

PATH: U:\PSO\Projects\Clients\1521-KingCo\554-1521-075-ELST\99Sect\CADD\Phase 19\T03_Civil\Drwg-Phase2\ PLOTTED BY: purgaban DATE: Monday, June 14, 2021 5:31:38 PM LAYOUT: DP11



DRIVEWAY #20 POINT TABLE				
POINT #	C-LINE STATION	OFFSET	ELEVATION	DESCRIPTION
345	413+21.89	6.05' RT	46.53	CONC-ASPH
346	413+21.91	8.00' RT	46.52	CONTROL POINT
347	413+22.01	18.17' RT	46.48	ME-ASPH
348	413+46.35	17.89' RT	46.57	ME-ASPH
349	413+46.06	8.00' RT	46.43	CONTROL POINT
350	413+46.01	6.00' RT	46.40	CONC-ASPH
351	413+45.67	6.00' LT	46.16	CONC-ASPH
352	413+44.00	6.00' LT	46.17	CONC-ASPH
353	413+43.70	8.00' LT	45.94	CONTROL POINT
354	413+45.97	16.12' LT	45.17	CURVE MIDPOINT
355	413+51.13	20.59' LT	44.60	CURVE PC
356	413+59.76	25.04' LT	43.85	AP-ASPH
357	413+70.79	27.95' LT	43.73	ME-ASPH
358	413+69.38	39.81' LT	43.34	ME-ASPH
359	413+15.54	35.00' LT	43.85	ME-ASPH
360	413+16.73	17.68' LT	44.66	CURVE PC
361	413+20.94	13.31' LT	45.38	CURVE MIDPOINT
362	413+21.76	8.00' LT	46.03	CURVE PT
363	413+21.78	6.00' LT	46.29	CONC-ASPH
364	413+43.44	9.71' LT	45.75	CURVE PT

DRIVEWAY #20 LINE TABLE						
LINE	LENGTH	BEARING	BEGIN EASTING	BEGIN NORTHING	END EASTING	END NORTHING
L247	35.61	S56° 20' 22"E	1334748.31	224517.54	1334777.95	224497.80
L248	40.08	S52° 18' 35"E	1334789.37	224489.60	1334821.09	224465.09

DRIVEWAY #20 CURVE TABLE							
CURVE	LENGTH	RADIUS	DELTA	BEGIN EASTING	BEGIN NORTHING	END EASTING	END NORTHING
C222	14.07	200.00	4°01'47"	1334777.95	224497.80	1334789.37	224489.60

- CONSTRUCTION NOTES:**
- HMA DRIVEWAY PAVEMENT SECTION SHALL BE 4" HMA CL 1/2 PG 64-22 OVER 8" CRUSHED SURFACING BASE COURSE.
 - PATTERNED CONCRETE INTERSECTION, SEE 1 MD4
 - ROCK WALL, SEE 1 MD1

- LEGEND:**
- PATTERNED CONCRETE DRIVEWAY
 - HMA
 - GRAVEL DRIVEWAY

CITY OF SAMMAMISH PUBLIC WORKS DEVELOPMENT REVIEW

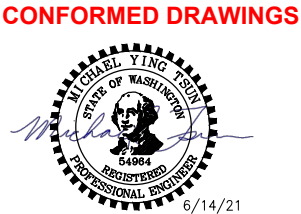
These drawings have been reviewed for compliance with City of Sammamish Clearing and Grading and Stormwater requirements and also in accordance with the requirements as established in the Settlement Agreement between King County vs. City of Sammamish No. C17-0921 JCC and King County vs. City of Sammamish No. 17-2-29922-7/SEA and have been deemed ACCEPTABLE. The reviewer accepts no responsibility for any errors and/or omissions made by the preparer of these drawings.

17 February 2022

REVISIONS	DATE	BY	DESIGNED
			M. TSUN
			B. PURGANAN
			Y. HO
			J. BAILEY

ONE INCH AT FULL SCALE. IF NOT, SCALE ACCORDINGLY

FILE NAME: BL1521075P19T03DP-01
JOB No.: 554-1521-075 P19 T03
DATE: JUNE 2021



Parametrix
ENGINEERING · PLANNING · ENVIRONMENTAL SCIENCES

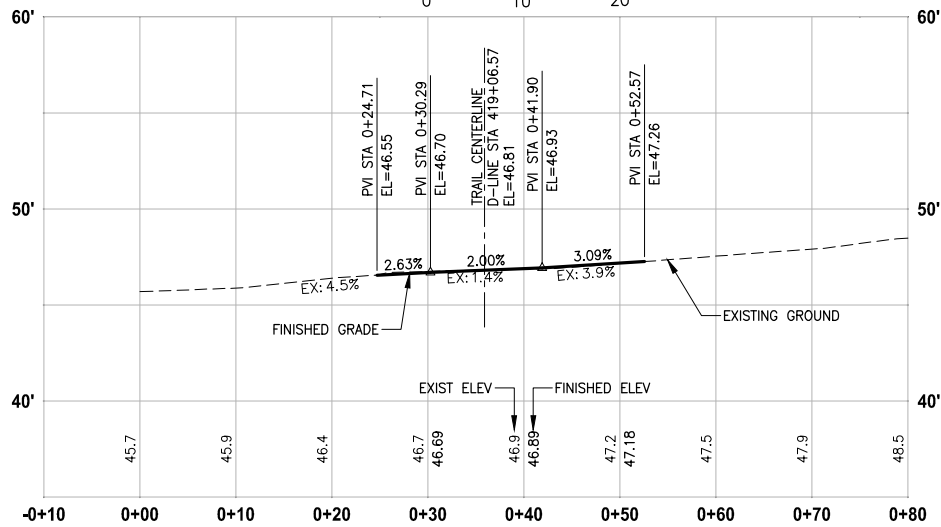
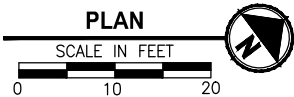
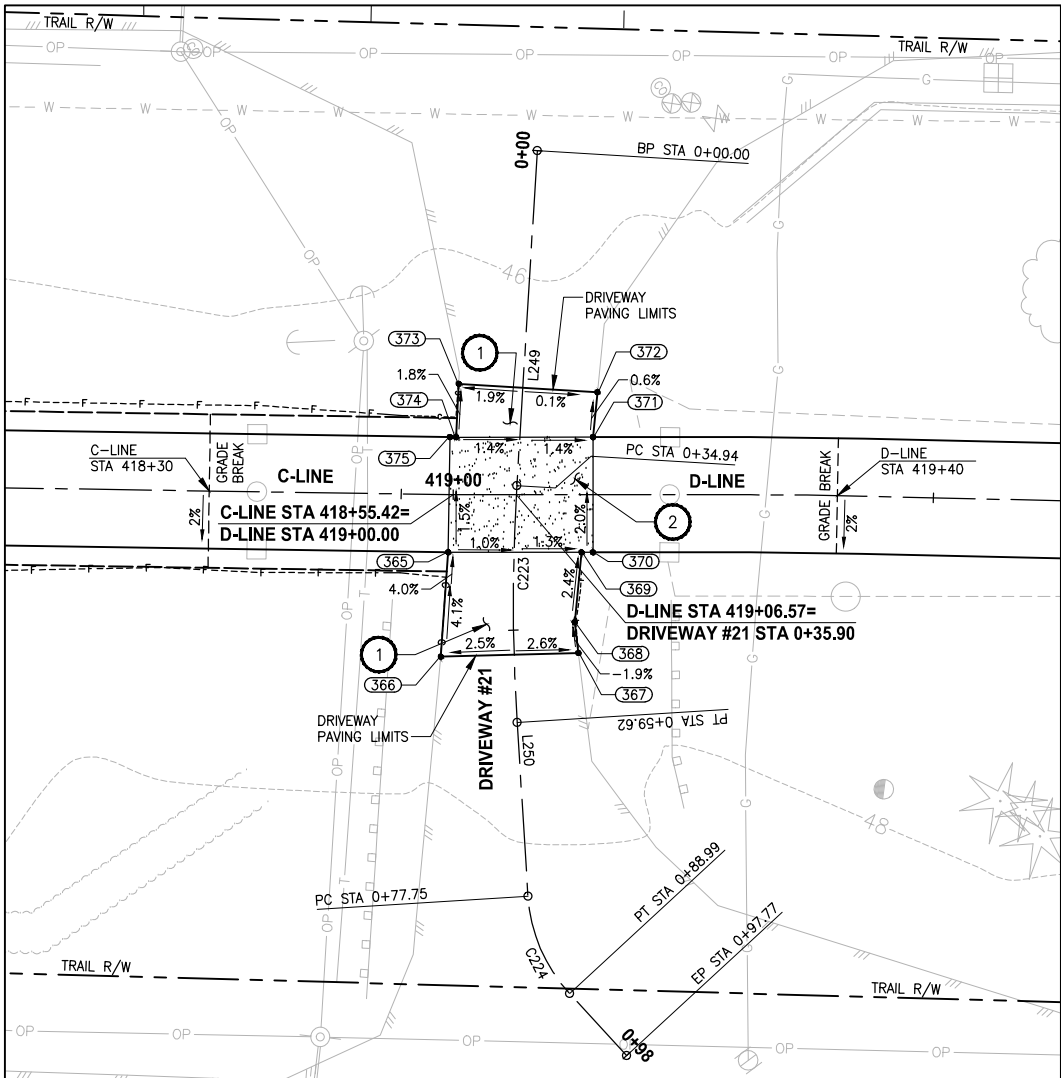
719 2ND AVENUE, SUITE 200 | SEATTLE, WA 98104
P 206.394.3700
WWW.PARAMETRIX.COM

PROJECT NAME
EAST LAKE SAMMAMISH MASTER PLAN TRAIL SOUTH SAMMAMISH SEGMENT B - PHASE 2
SAMMAMISH, WA

DRIVEWAY PLAN AND PROFILE

SHEET NO.
104 OF 213
DP11

PATH: U:\PSO\Projects\Clients\1521-KingCo\554-1521-075-ELST\995vca\CADD\Phase 19\103 Civil\DWG-Phase2\ LAYOUT: DP12 PLOTTED BY: purgabut DATE: Monday, June 14, 2021 5:31:48 PM



DRIVEWAY #21 (SHEET AL10)

HORIZ: 1"=10'
VERT: 1"=5'

DRIVEWAY #21 POINT TABLE				
POINT #	C-LINE STATION	OFFSET	ELEVATION	DESCRIPTION
365	418+54.98	6.00' RT	47.00	CONC-ASPH
366	418+54.38	16.88' RT	47.45	ME-ASPH
375	418+54.98	6.00' LT	46.78	CONC-ASPH

DRIVEWAY #21 POINT TABLE				
POINT #	D-LINE STATION	OFFSET	ELEVATION	DESCRIPTION
367	419+13.03	16.47' RT	47.08	ME-ASPH
368	419+12.64	13.28' RT	47.02	AP
369	419+13.36	6.00' RT	46.84	CONC-ASPH
370	419+14.55	6.00' RT	46.82	CONC-ASPH
371	419+14.55	6.00' LT	46.58	CONC-ASPH
372	419+15.01	10.68' LT	46.55	ME-ASPH
373	419+00.56	11.56' LT	46.68	ME-ASPH
374	419+00.29	6.00' LT	46.78	CONC-ASPH

DRIVEWAY #21 LINE TABLE						
LINE	LENGTH	BEARING	BEGIN EASTING	BEGIN NORTHING	END EASTING	END NORTHING
L249	34.94	S49° 42' 50"E	1335078.29	224935.75	1335104.95	224913.16
L250	18.13	S56° 47' 04"E	1335124.71	224898.40	1335139.87	224888.47

DRIVEWAY #21 CURVE TABLE							
CURVE	LENGTH	RADIUS	DELTA	BEGIN EASTING	BEGIN NORTHING	END EASTING	END NORTHING
C223	24.68	200.00	7°04'14"	1335104.95	224913.16	1335124.71	224898.40
C224	11.24	16.48	39°05'59"	1335139.87	224888.47	1335150.59	224885.87

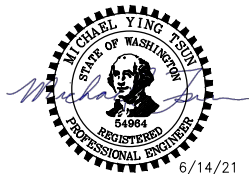
CONSTRUCTION NOTES:

- 1 HMA DRIVEWAY PAVEMENT SECTION SHALL BE 4" HMA CL 1/2 PG 64-22 OVER 8" CRUSHED SURFACING BASE COURSE.
- 2 PATTERNED CONCRETE INTERSECTION, SEE 1 MD4
- 3 ROCK WALL, SEE 1 MD1

LEGEND:

- PATTERNED CONCRETE DRIVEWAY
- HMA
- GRAVEL DRIVEWAY

CONFORMED DRAWINGS



Parametrix
ENGINEERING · PLANNING · ENVIRONMENTAL SCIENCES

719 2ND AVENUE, SUITE 200 | SEATTLE, WA 98104
P 206.394.3700
WWW.PARAMETRIX.COM

PROJECT NAME
**EAST LAKE SAMMAMISH
MASTER PLAN TRAIL
SOUTH SAMMAMISH SEGMENT B - PHASE 2**
SAMMAMISH, WA

DRIVEWAY PLAN AND PROFILE

SHEET NO.
105 OF 213

DP12

CITY OF SAMMAMISH PUBLIC WORKS
DEVELOPMENT REVIEW

These drawings have been reviewed for compliance with City of Sammamish Clearing and Grading and Stormwater requirements and also in accordance with the requirements as established in the Settlement Agreement between King County vs. City of Sammamish No. C17-0921 JCC and King County vs. City of Sammamish No. 17-2-29922-7 SEA and have been deemed ACCEPTABLE. The reviewer accepts no responsibility for any errors and/or omissions made by the preparer of these drawings.

17 February 2022

CITY OF SAMMAMISH APPROVAL

City Engineer

Date

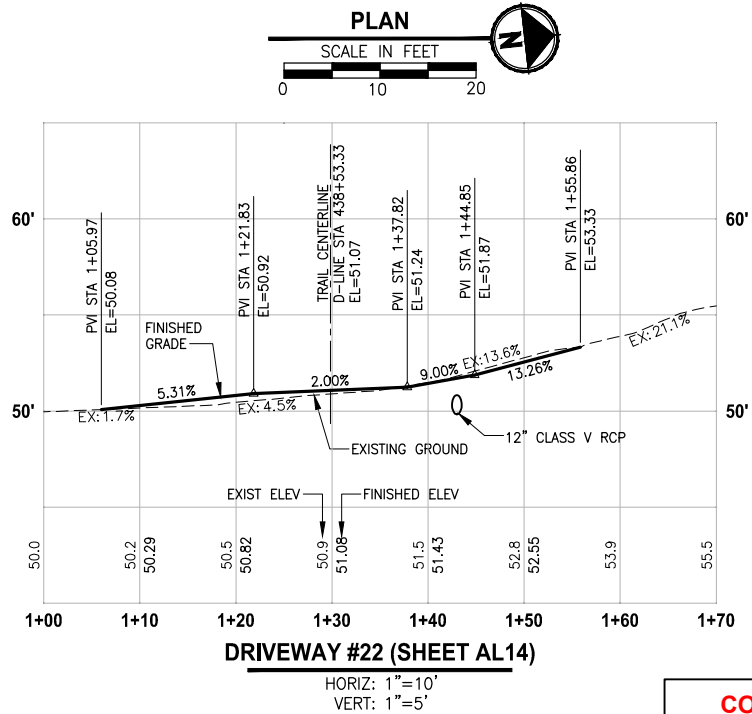
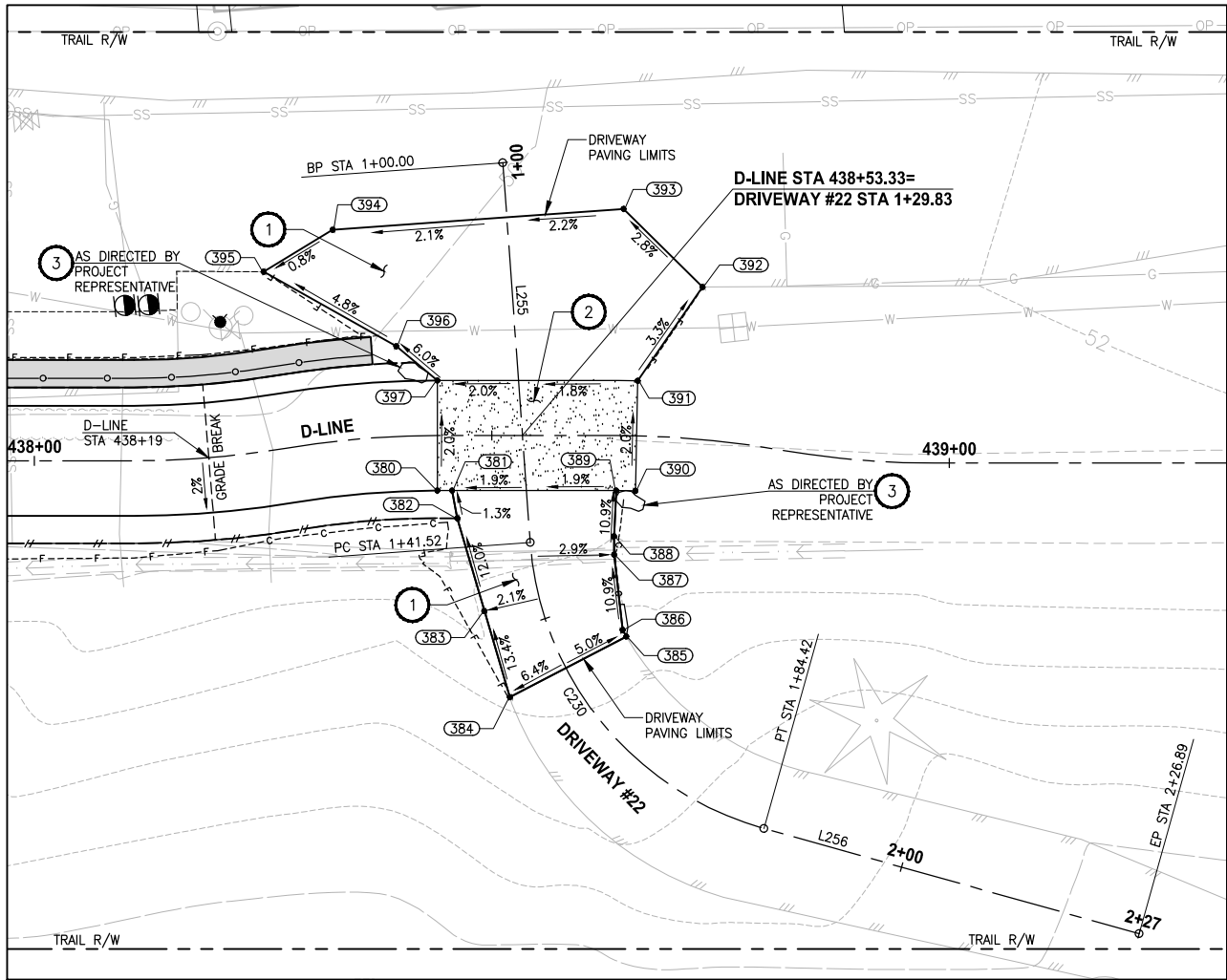
Community Development

Date

REVISIONS	DATE	BY	DESIGNED
			M. TSUN
			B. PURGANAN
			Y. HO
			J. BAILEY

ONE INCH AT FULL SCALE.
IF NOT, SCALE ACCORDINGLY
FILE NAME
BL1521075P19T03DP-01
JOB No.
554-1521-075 P19 T03
DATE
JUNE 2021

U:\PSO\Projects\Clients\1521-KingCo\554-1521-075-ELST\995vec\1\103 Civil\Draw-Phase2\ LAYOUT: DP13 PLOTTED BY: purgubut DATE: Monday, June 14, 2021 5:32:21 PM



DRIVEWAY #22 POINT TABLE				
POINT #	D-LINE STATION	OFFSET	ELEVATION	DESCRIPTION
380	438+44.06	6.00' RT	51.02	CONC-ASPH
381	438+45.66	6.00' RT	51.04	CONC-ASPH
382	438+46.24	9.03' RT	51.08	AP-ASPH
383	438+49.17	19.14' RT	52.38	CONTROL POINT
384	438+51.97	28.54' RT	53.76	ME-ASPH
385	438+64.91	21.91' RT	52.94	ME-ASPH
386	438+64.39	21.20' RT	52.86	AP-ASPH
387	438+63.32	12.99' RT	51.97	AP-ASPH
388	438+63.31	11.00' RT	51.95	AP-ASPH
389	438+63.55	6.00' RT	51.39	CONC-ASPH
390	438+65.77	6.00' RT	51.43	CONC
391	438+65.77	6.00' LT	51.19	CONC-ASPH
392	438+71.65	16.56' LT	50.69	ME-ASPH
393	438+64.23	24.72' LT	50.35	ME-ASPH
394	438+34.76	22.97' LT	49.68	ME-ASPH
395	438+28.14	19.37' LT	49.61	ME-ASPH
396	438+39.98	9.83' LT	50.43	AP-ASPH
397	438+44.06	6.00' LT	50.78	CONC-ASPH

DRIVEWAY #22 LINE TABLE					
LINE	LENGTH	BEARING	BEGIN EASTING	BEGIN NORTHING	END EASTING
L255	41.52	S87° 43' 06"E	1335804.32	226659.11	1335845.81
L256	42.47	N22° 04' 09"E	1335879.64	226679.28	1335895.60

DRIVEWAY #22 CURVE TABLE							
CURVE	LENGTH	RADIUS	DELTA	BEGIN EASTING	BEGIN NORTHING	END EASTING	END NORTHING
C230	42.89	35.00	70°12'45"	1335845.81	226657.45	1335879.64	226679.28

CONSTRUCTION NOTES:

- HMA DRIVEWAY PAVEMENT SECTION SHALL BE 4" HMA CL 1/2 PG 64-22 OVER 8" CRUSHED SURFACING BASE COURSE.
- PATTERNED CONCRETE INTERSECTION, SEE 1 MD4
- ROCK WALL, SEE 1 MD1

LEGEND:

- PATTERNED CONCRETE DRIVEWAY
- HMA
- GRAVEL DRIVEWAY

CONFORMED DRAWINGS



Parametrix

ENGINEERING · PLANNING · ENVIRONMENTAL SCIENCES

719 2ND AVENUE, SUITE 200 | SEATTLE, WA 98104
P 206.394.3700
WWW.PARAMETRIX.COM

PROJECT NAME

EAST LAKE SAMMAMISH
MASTER PLAN TRAIL
SOUTH SAMMAMISH SEGMENT B - PHASE 2
SAMMAMISH, WA

DRIVEWAY PLAN AND PROFILE

SHEET NO.
106 OF 213

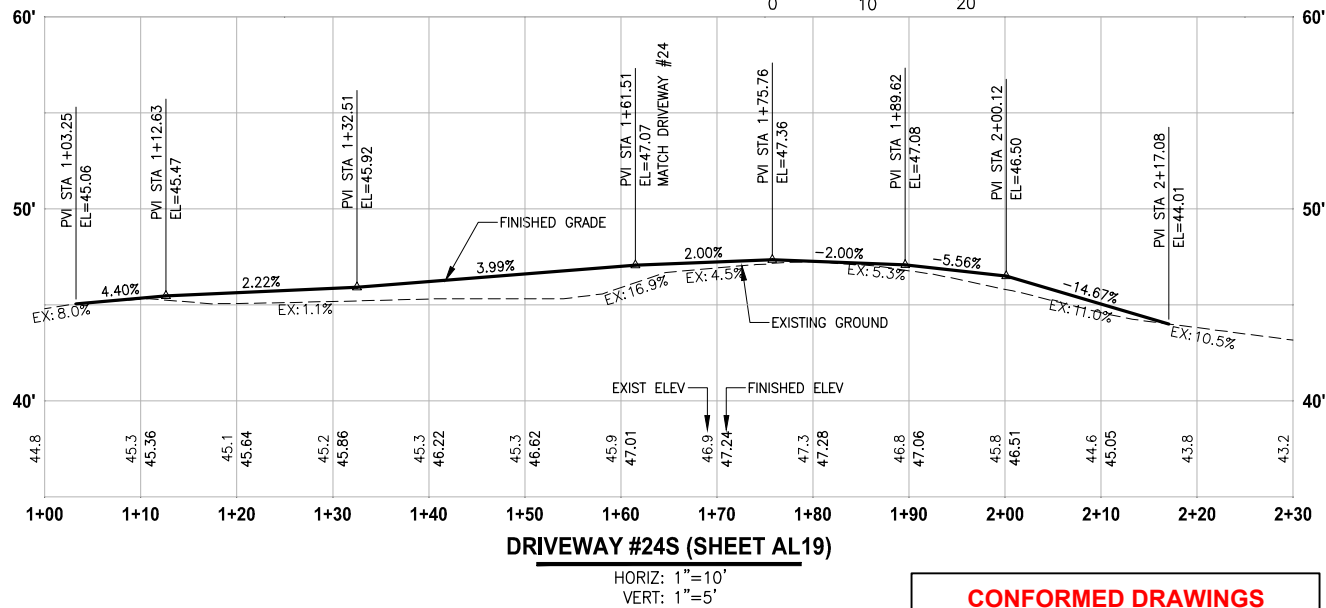
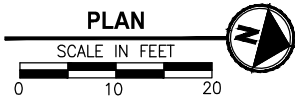
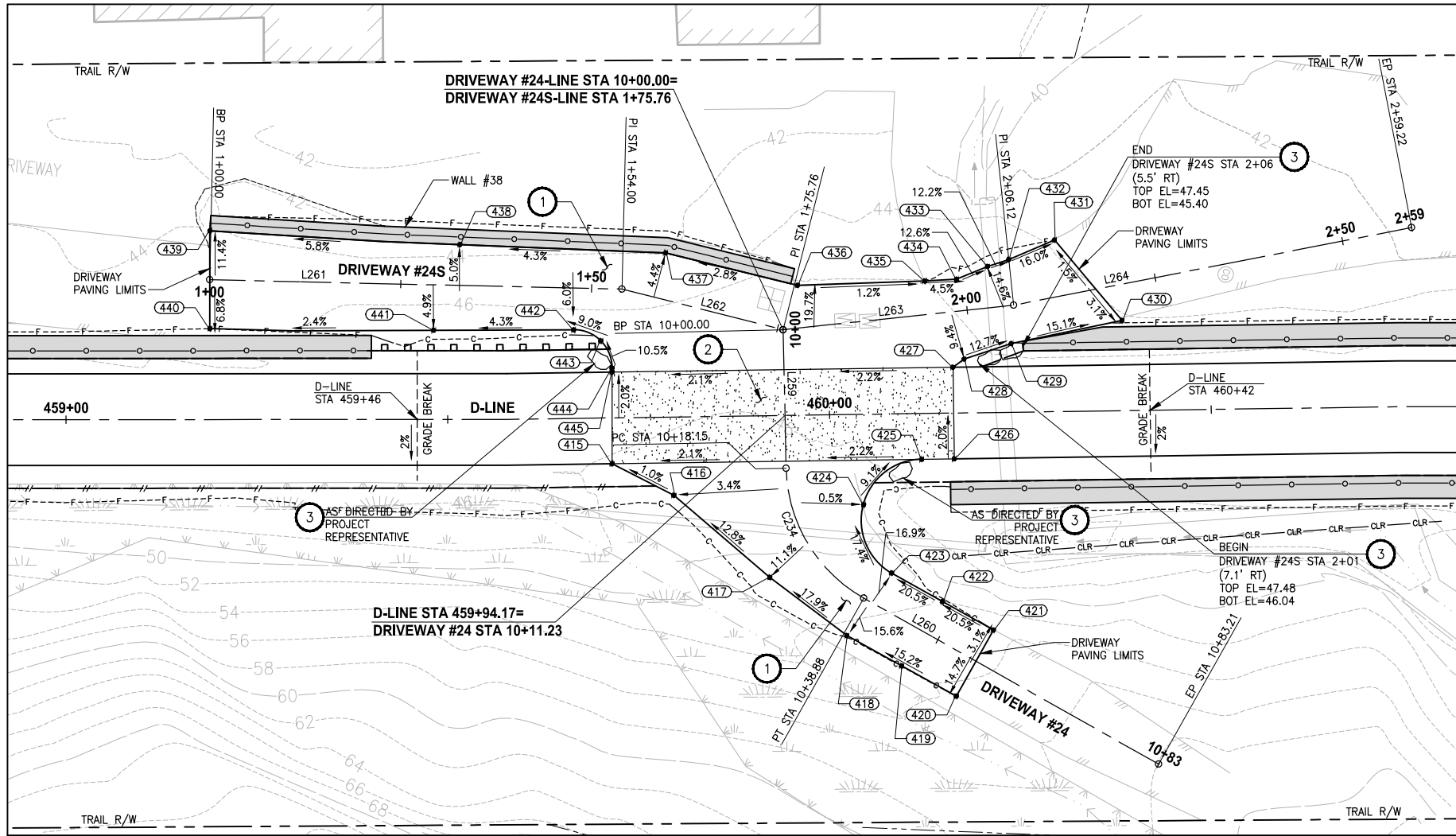
DP13

CITY OF SAMMAMISH PUBLIC WORKS
DEVELOPMENT REVIEW

These drawings have been reviewed for compliance with City of Sammamish Clearing and Grading and Stormwater requirements and also in accordance with the requirements as established in the Settlement Agreement between King County vs. City of Sammamish No. C17-0921 JCC and King County vs. City of Sammamish No. 17-2-29922-7 SEA and have been deemed ACCEPTABLE. The reviewer accepts no responsibility for any errors and/or omissions made by the preparer of these drawings.

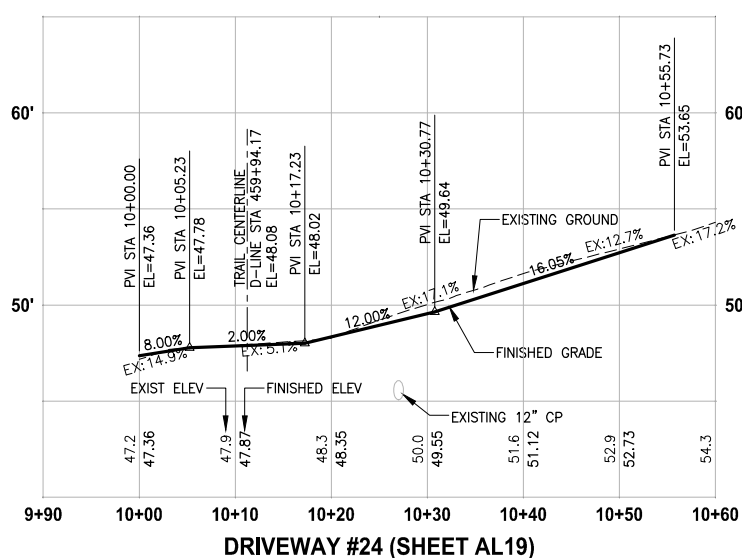
17 February 2022

PATH: U:\PSO\Projects\Clients\1521-KingCo\554-1521-075-ELST\995vec\CADD\Phase 19\T03 Civil\Draw-Phase2\ PLOTTED BY: purgubut DATE: Monday, June 14, 2021 5:32:38 PM LAYOUT: DP15



DRIVEWAY #24S (SHEET AL19)

HORIZ: 1"=10'
VERT: 1"=5'



DRIVEWAY #24 (SHEET AL19)

HORIZ: 1"=10'
VERT: 1"=5'

DRIVEWAYS #24 AND #24S POINT TABLE				
POINT #	D-LINE STATION	OFFSET	ELEVATION	DESCRIPTION
415	459+71.43	6.00' RT	47.90	CONC-ASPH
416	459+79.46	10.25' RT	47.99	AP
417	459+91.87	21.17' RT	50.10	AP
418	460+01.87	28.95' RT	51.92	AP
419	460+08.97	33.01' RT	53.16	CONTROL POINT
420	460+16.08	37.08' RT	54.42	ME-ASPH
421	460+21.08	28.48' RT	53.49	ME-ASPH
422	460+14.46	24.66' RT	51.92	CONTROL POINT
423	460+07.85	20.84' RT	50.35	CURVE PT
424	460+04.29	11.84' RT	48.63	CURVE MIDPOINT
425	460+12.00	6.00' RT	47.81	CURVE PC-CONC-ASPH
426	460+16.26	6.00' RT	47.72	CONC-ASPH
427	460+16.26	6.00' LT	47.48	CONC-ASPH
428	460+17.72	7.05' LT	47.22	AP
429	460+23.91	9.00' LT	46.40	AP
430	460+38.48	11.81' LT	44.18	ME-ASPH
431	460+29.79	22.48' LT	43.88	ME-ASPH
432	460+23.76	19.99' LT	44.93	AP-ASPH
433	460+20.98	19.13' LT	45.30	AP-ASPH
434	460+16.88	17.52' LT	45.83	AP-ASPH
435	460+12.70	17.35' LT	46.03	ME-GRADE BREAK
436	459+96.04	17.02' LT	46.23	ME-AP
437	459+78.86	21.52' LT	46.68	AP
438	459+51.60	22.90' LT	45.68	CONTROL POINT
439	459+18.85	24.71' LT	44.11	ME-ASPH
440	459+18.85	11.90' LT	45.23	ME-ASPH
441	459+48.16	11.67' LT	46.13	CONTROL POINT
442	459+66.66	11.61' LT	46.83	CURVE PC
443	459+70.19	10.10' LT	47.21	CURVE MIDPOINT
444	459+71.61	6.54' LT	47.64	CURVE PT
445	459+71.60	6.00' LT	47.66	CONC-ASPH

CONSTRUCTION NOTES:

- HMA DRIVEWAY PAVEMENT SECTION SHALL BE 4" HMA CL 1/2 PG 64-22 OVER 8" CRUSHED SURFACING BASE COURSE.
- PATTERNED CONCRETE INTERSECTION, SEE 1 MD4
- ROCK WALL, SEE 1 MD1

LEGEND:

- PATTERNED CONCRETE DRIVEWAY
- HMA
- GRAVEL DRIVEWAY

DRIVEWAY #24 LINE TABLE						
LINE	LENGTH	BEARING	BEGIN EASTING	BEGIN NORTHING	END EASTING	END NORTHING
L259	18.15	N74° 03' 56"E	1335702.75	228758.65	1335720.20	228763.63
L260	44.33	N14° 40' 13"E	1335734.06	228777.80	1335745.29	228820.68

DRIVEWAY #24 CURVE TABLE						
CURVE	LENGTH	RADIUS	DELTA	BEGIN EASTING	BEGIN NORTHING	END EASTING
C234	20.73	20.00	59°23'42"	1335720.20	228763.63	1335734.06

DRIVEWAY #24S LINE TABLE						
LINE	LENGTH	BEARING	BEGIN EASTING	BEGIN NORTHING	END EASTING	END NORTHING
L261	54.00	N13° 25' 14"W	1335715.50	228684.36	1335702.96	228736.89
L262	21.76	N0° 33' 34"W	1335702.96	228736.89	1335702.75	228758.65
L263	30.36	N20° 46' 37"W	1335702.75	228758.65	1335691.98	228787.03
L264	53.10	N25° 45' 13"W	1335691.98	228787.03	1335668.91	228834.86

CITY OF SAMMAMISH PUBLIC WORKS DEVELOPMENT REVIEW

These drawings have been reviewed for compliance with City of Sammamish Clearing and Grading and Stormwater requirements and also in accordance with the requirements as established in the Settlement Agreement between King County vs. City of Sammamish No. C17-0921 JCC and King County vs. City of Sammamish No. 17-2-29922-7 SEA and have been deemed ACCEPTABLE. The reviewer accepts no responsibility for any errors and/or omissions made by the preparer of these drawings.

17 February 2022

CITY OF SAMMAMISH APPROVAL

City Engineer _____ Date _____
Community Development _____ Date _____

CONFORMED DRAWINGS



ONE INCH AT FULL SCALE IF NOT, SCALE ACCORDINGLY

FILE NAME: BL1521075P19T03DP-02
JOB No.: 554-1521-075 P19 T03
DATE: JUNE 2021

Parametrix ENGINEERING · PLANNING · ENVIRONMENTAL SCIENCES

719 2ND AVENUE, SUITE 200 | SEATTLE, WA 98104
P 206.394.3700
WWW.PARAMETRIX.COM

PROJECT NAME

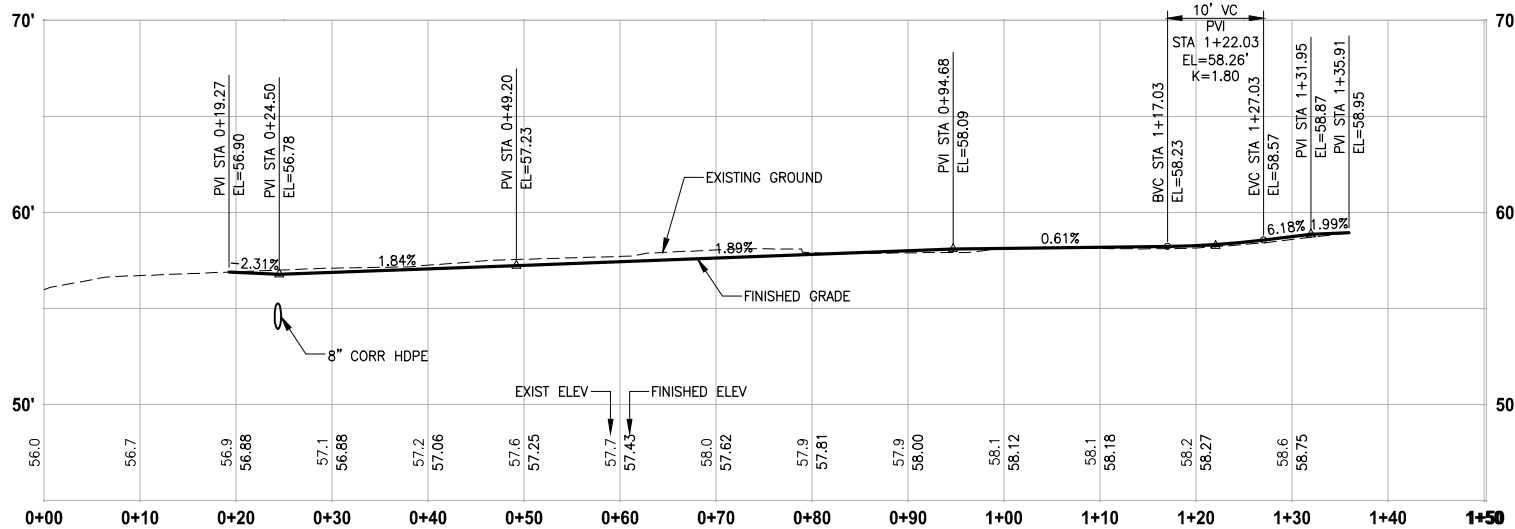
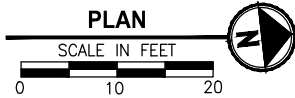
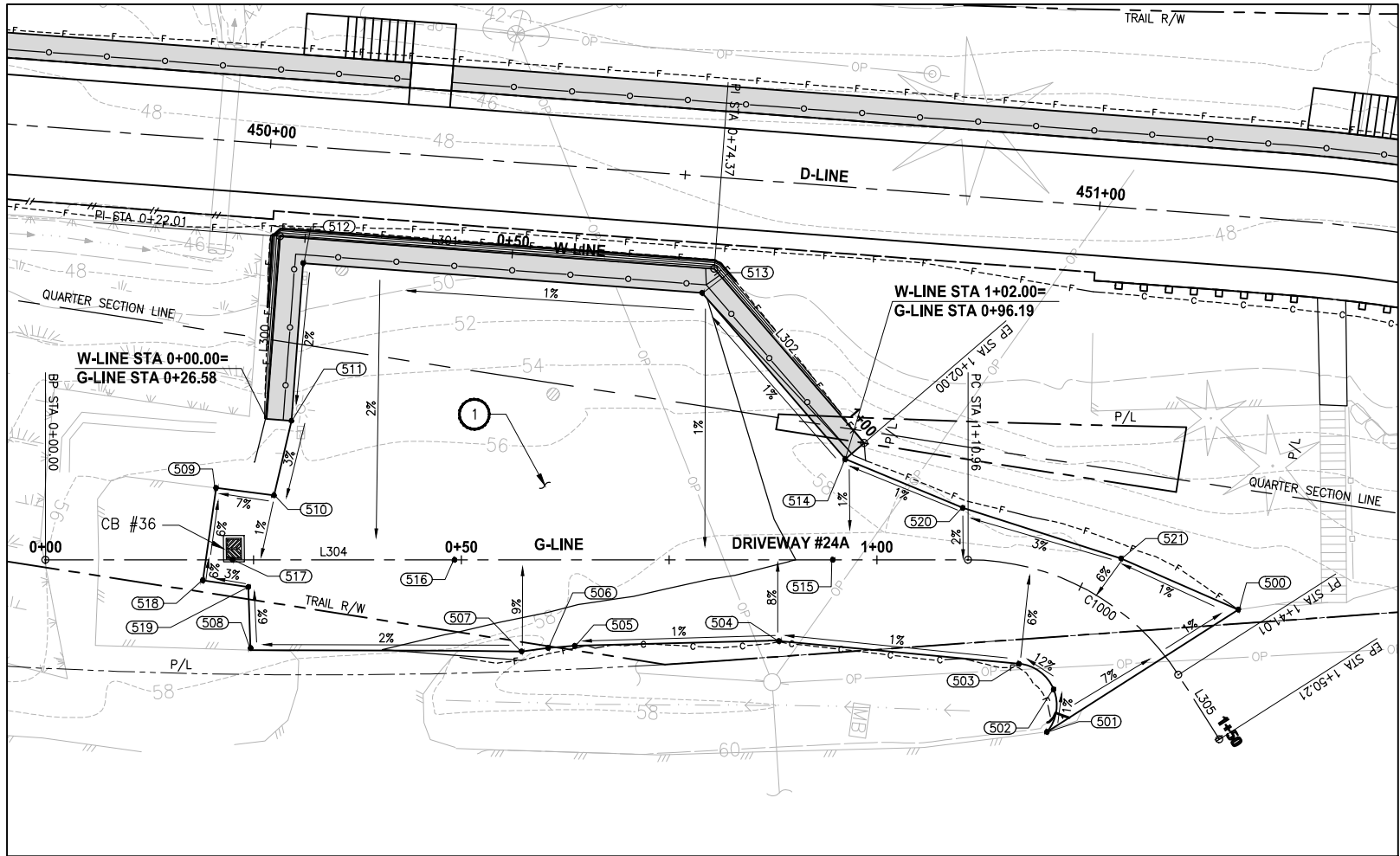
EAST LAKE SAMMAMISH
MASTER PLAN TRAIL
SOUTH SAMMAMISH SEGMENT B - PHASE 2
SAMMAMISH, WA

DRIVEWAY PLAN AND PROFILE

SHEET NO.
108 OF 213

DP15

PATH: U:\PSO\Projects\Clients\1521-KingCo\554-1521-075-ELST\995vec\CADD\Phase 19\T03 Civil\Draw-Phase2\ LAYOUT: DP16 PLOTTED BY: purgubut DATE: Monday, June 14, 2021 5:32:48 PM



DRIVEWAY #24A (SHEET AL17)

HORIZ: 1"=10'
VERT: 1"=5'

CONFORMED DRAWINGS



ONE INCH AT FULL SCALE
IF NOT, SCALE ACCORDINGLY
FILE NAME
BL1521075P19T03DP-02
JOB No.
554-1521-075 P19 T03
DATE
JUNE 2021

Parametrix
ENGINEERING · PLANNING · ENVIRONMENTAL SCIENCES
719 2ND AVENUE, SUITE 200 | SEATTLE, WA 98104
P 206.394.3700
WWW.PARAMETRIX.COM

PROJECT NAME
**EAST LAKE SAMMAMISH
MASTER PLAN TRAIL
SOUTH SAMMAMISH SEGMENT B - PHASE 2**
SAMMAMISH, WA

DRIVEWAY PLAN AND PROFILE

SHEET NO.
109 OF 213

DP16

CONSTRUCTION NOTES:

- 1 HMA DRIVEWAY PAVEMENT SECTION SHALL BE 4"
HMA CL 1/2 PG 64-22 OVER 8" CRUSHED
SURFACING BASE COURSE.
- 2 PATTERNED CONCRETE INTERSECTION, SEE 1
MD4
- 3 ROCK WALL, SEE 1
MD1

LEGEND:

- PATTERNED CONCRETE DRIVEWAY
- HMA
- GRAVEL DRIVEWAY

DRIVEWAY #24A POINT TABLE

POINT #	G-LINE STATION	OFFSET	ELEVATION	DESCRIPTION
500	1+38.99	10.40' LT	58.84	ME-ASPH
501	1+34.82	16.73' RT	60.24	ME-ASPH-CURVE PC
502	1+29.55	12.31' RT	59.65	CURVE MIDPOINT
503	1+21.06	11.47' RT	58.94	CURVE PT
504	0+88.20	9.79' RT	58.76	AP-ASPH
505	0+63.65	10.35' RT	58.45	CURVE PC
506	0+60.44	10.60' RT	58.40	CURVE MIDPOINT
507	0+57.25	11.02' RT	58.36	ME-CURVE PT
508	0+24.68	10.62' RT	57.66	ME-ASPH
509	0+20.51	8.64' LT	56.35	ME-ASPH
510	0+27.47	7.76' LT	56.85	AP-ASPH
511	0+29.57	16.73' LT	57.10	AP-ASPH
512	0+30.99	35.69' LT	57.48	AP-ASPH
513	0+78.97	32.10' LT	57.99	AP-ASPH
514	0+96.19	12.10' LT	58.25	AP-ASPH
515	0+94.68	0.00' T	58.09	FL-CONTROL POINT
516	0+49.20	0.00' T	57.23	FL-CONTROL POINT
517	0+22.49	0.00' T	56.74	FL-LOW POINT
518	0+18.91	2.49' RT	57.06	ME-ASPH
519	0+24.39	3.27' RT	57.22	ME-ASPH
520	1+10.31	6.24' LT	58.33	AP-ASPH
521	1+27.40	5.32' LT	58.85	AP-ASPH

W-LINE LINE TABLE

LINE	LENGTH	BEARING	BEGIN EASTING	BEGIN NORTHING	END EASTING	END NORTHING
L300	22.01	S86° 05' 22"W	1335968.04	227800.72	1335946.09	227799.22
L301	52.36	N3° 54' 38"W	1335946.09	227799.22	1335942.51	227851.46
L302	27.63	N41° 05' 22"E	1335942.51	227851.46	1335960.67	227872.28

DRIVEWAY #24A LINE TABLE

LINE	LENGTH	BEARING	BEGIN EASTING	BEGIN NORTHING	END EASTING	END NORTHING
L304	110.96	N8° 11' 05"W	1335988.61	227776.83	1335972.81	227886.66
L305	9.20	N49° 12' 30"E	1335982.91	227913.64	1335989.87	227919.65

DRIVEWAY #24A CURVE TABLE

CURVE	LENGTH	RADIUS	DELTA	BEGIN EASTING	BEGIN NORTHING	END EASTING	END NORTHING
C1000	30.05	30.00	57°23'35"	1335972.81	227886.66	1335982.91	227913.64

**CITY OF SAMMAMISH PUBLIC WORKS
DEVELOPMENT REVIEW**

These drawings have been reviewed for compliance with City of Sammamish Clearing and Grading and Stormwater requirements and also in accordance with the requirements as established in the Settlement Agreement between King County vs. City of Sammamish No. C17-0921 JCC and King County vs. City of Sammamish No. 17-2-29922-7 SEA and have been deemed ACCEPTABLE. The reviewer accepts no responsibility for any errors and/or omissions made by the preparer of these drawings.

17 February 2022

CITY OF SAMMAMISH APPROVAL

City Engineer

Date

Community Development

Date