

GREEN RIVER TRAIL NORTH EXTENSION

About the Green River Trail

The Green River Trail winds northward more than 19 miles, from the Green River Valley to the Duwamish River in Tukwila, connecting pastoral landscapes to industrial areas.

Linking Communities

Once complete, this 1.4-mile-long connection will link the cities of Kent and Tukwila to Seattle in the neighborhood of South Park.

The Green River Trail currently ends at Cecil Moses Park, which is along the Duwamish River. The goal of this project is to establish a safe and continuous trail north from Cecil Moses Park along West Marginal Place South, and into South Park, where trail visitors can then connect to Seattle's bike network.



Benefits to Our Community

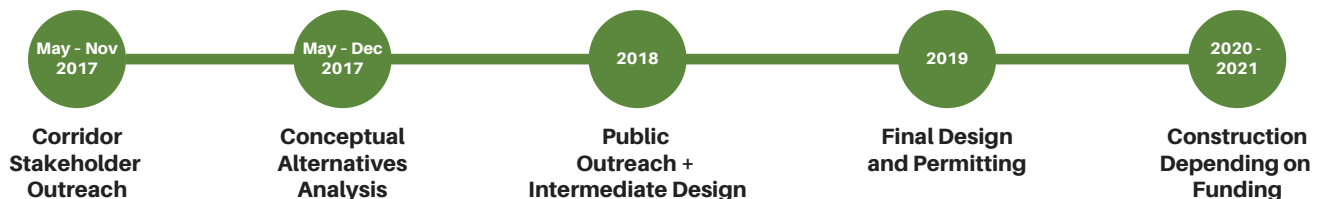
In extending the trail, the project will meet regional transportation goals by establishing a missing connection between Tukwila and Seattle and providing a safe north-south route to the largest population and employment center in the region.

Get Involved and Stay Connected

Sign up for the Green River Trail e-newsletter to learn about opportunities for public input, meetings, and project updates at

www.kingcounty.gov/greenrivertrail.

Project Timeline



Trail Route Recommendation

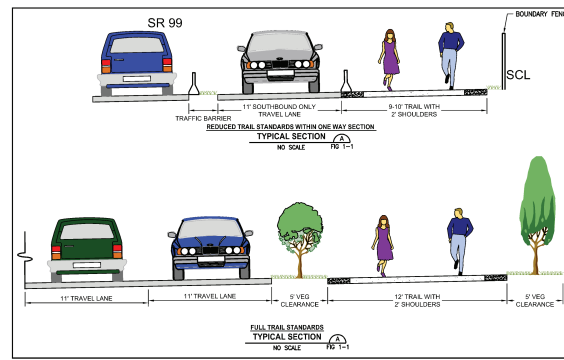
King County is recommending a unique approach to routing an extension of the Green River Trail from Cecil Moses Park to Seattle's south border at Director Street. The County has conducted an Alternative Alignment Analysis for the Green River Trail North Extension that assessed several alternatives. The goal of the analysis was to determine a trail route that provides a safe and enjoyable trail for users, has the least impact to neighboring properties and the environment, and makes the best use of public funds.

One-Way Alternative Recommended

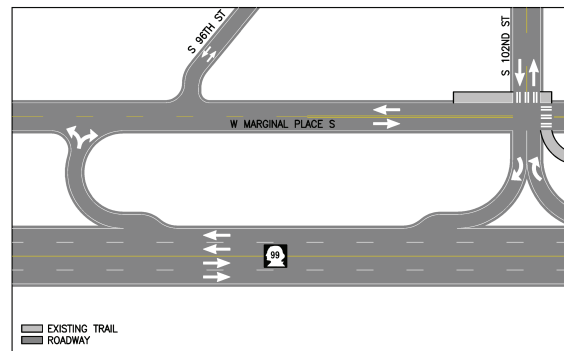
The Green River Trail North Extension project is constrained by State Route 99, West Marginal Place S., private property and the Duwamish River. To build a pedestrian/bicycle facility that is safe for all ages and abilities, a unique design strategy is needed. The recommended alignment of the trail includes replacing about a half-mile of the northbound drive lane of West Marginal Place S. with a regional trail. Southbound vehicular traffic will still be accommodated. This approach includes a roundabout and a turnaround for vehicles at ends of the reconfigured road. The project will also build sections of new regional trail separated from roads by a vegetated planting strip, as shown by the figures to the right.

Several other alternatives were evaluated during the design process. The Green River Trail - Alternative Alignment Analysis provides details of all the options that were considered.

Proposed Roadway Sections



Existing Circulation



Proposed One-Way Road with Trail

