

# Summer 2025 Skyway Community Center Feedback

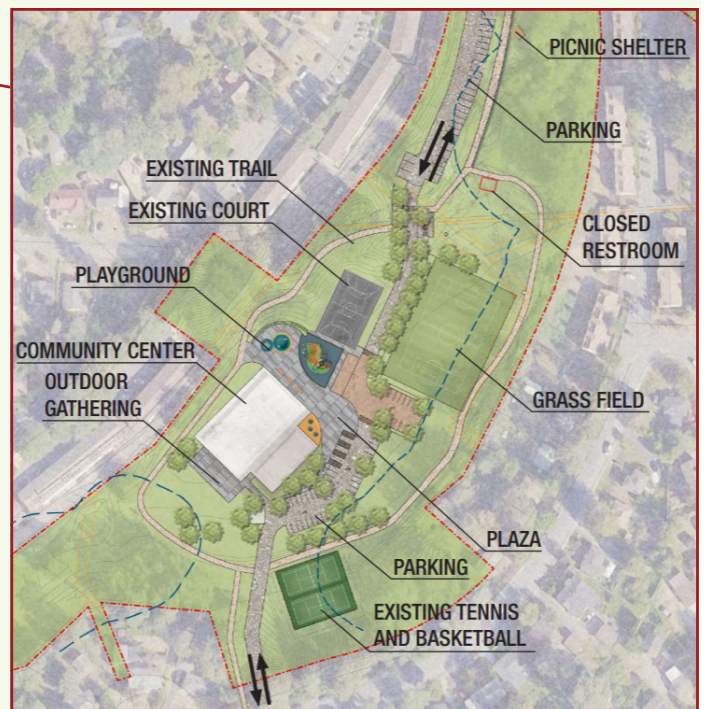
King County Parks conducted community outreach and engagement in June and July 2025 for the Skyway Community Center. Parks asked for feedback on early designs of the community center building, project site, and Skyway Park as a whole to inform the next phases of design.

- **Tabling by the design team** at 7 events in 4 locations (Grocery Outlet, Skyway Library, Skyway Park, Campbell Hill Elementary), engaging 300+ residents in English, Spanish, Mandarin, and Vietnamese.
- **Virtual meeting June 10** with 38 attendees and live captions offered in 5 languages other than English. Promoted via mailers, social media, email, flyers, and community partners.
- **Public Input website** with recording & summary of virtual meeting translated in 7 languages. 971 page views, 16+ video views, feedback from 20+ individuals.
- **Project presentation July 15** by the design team at West Hill Community Association meeting, where they answered questions and invited feedback from community members.

## Site Concept

The site concept builds on things that community members already like about Skyway Park. The plan provides better connections for people visiting the park by expanding the existing trail system, retains much of the high quality open green space, expands picnicking and playground areas, and adds new amenities like a dog park and bike pump track.

Development is complicated across much of the property by existing utilities, wetlands, and funding restrictions, limiting where new features could be built. The surrounding images show proposed park improvements.



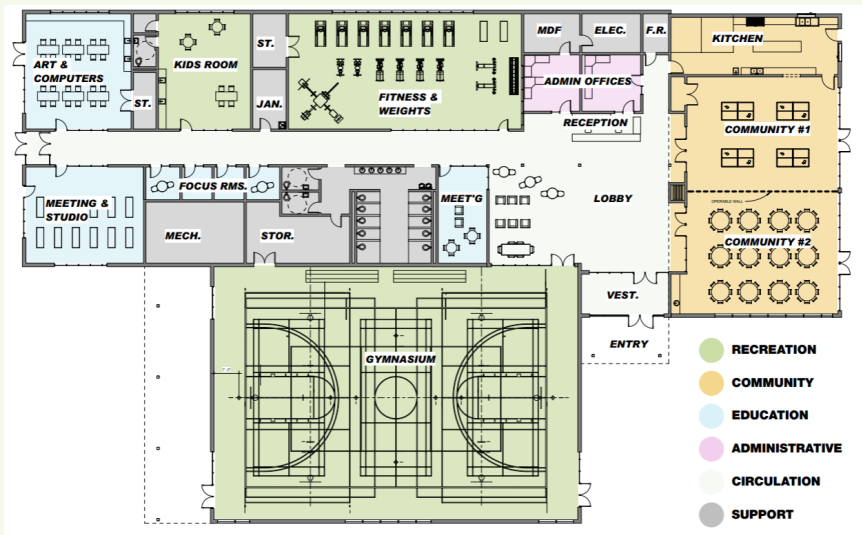
## SITE CONCEPT FEEDBACK

- **Community members are excited for a community center and want the project to move forward.** Several written comments expressed support for the concepts, including one that started with “I love the design!”
- About 60% of community members shared their support for the Skyway Park location. About half were not aware of the park’s existence. Some had concerns with the location due to the loss of green space or the potential for traffic and parking impacts to S 125th Street. Some had concerns about safety in the park and requested increased signage and better lighting. Some flagged a need for **improved access** and additional parking.
- Community members **liked many concept elements**, such as additional and improved playgrounds, a designated area for dogs, a bike pump track and/or skate bowl, and improved trails and trail connections. There was interest in adding outdoor seating along the trails and near the community center.
- Many supported **improving the trail** under the power lines that connects the park to Renton Ave, some preferring a trail instead of stairs. Comments also suggested connecting trails to schools, existing trails (such as the Chief Sealth Trail) and building new trails through forested areas.
- There were some concerns about **community access to affordable playfields** with the loss of flexible open space. Comments were supportive of converting the existing baseball field into a flexible greenspace. Some comments suggested converting the tennis courts to pickleball courts. Other comments noted how popular soccer is.
- Some community members requested a **community garden**.
- **Aquatic facilities** — including splash pads, wading pools, and pools — continue to be of interest to many community members.



## Building Concept

The new community center would be in the southern portion of Skyway Park. The building would be 1 story tall and 25,000 sq ft in size. The type and size of the various spaces are all based on earlier community feedback. The floor plan includes a large gymnasium, a fitness and weights room, community rooms, a kitchen, classrooms, a kids room, gender neutral bathrooms, and smaller meeting rooms. Many spaces would open to outdoor plazas, allowing for indoor / outdoor events.



## BUILDING CONCEPT FEEDBACK

- Community members want a **place for all ages and physical abilities**. More than half of community members expressed a need for **spaces that truly welcome Skyway youth** and more youth activities. Many also asked for accessible, intergenerational gathering spaces and accessible furniture.
- The community was excited about the **large gym** and **meeting rooms**, as well as the **fitness and weights room**. Some commenters suggested adding a **recording studio**. One comment requested ensuring the gym floor would be compatible with **roller derby group use**. Another comment flagged a need for **adequate storage** within the building.
- Commenters generally preferred more **open, vibrant and welcoming interior spaces with natural light**. They also requested **increasing visibility** into other spaces, such as the gym and restrooms, from the building lobby.
- One commentor expressed a preference for wood over prefabricated metal or concrete finished surfaces and asked that the building favor more **dynamic looks** over boring white spaces. Another commentor liked brighter wood tone finishes in the building.
- Parks also received many comments that will help inform the program — community members remain interested in **wide ranging activities that will require flexible building spaces**. Commenters mentioned art classes, fitness classes (like yoga, pilates, and strength training), and volleyball. One commentor liked spaces that promote mingling and connection.

Skyway Park has limited space, challenging environmental conditions, and is located in a primarily residential setting. It will not be possible to accommodate every requested feature. The design team considers all feedback.