



Critical Areas Memorandum

To: Leigh Nelson, King County Department of Natural Resources and Parks
From: Jeff Gray, PWS; Kevin Corrigan
Copies: Keith Bates, Otak, Inc.
Date: April 1, 2024
Subject: Critical Area Review - Petrovitsky Park Splash Pad / Cooling Center
Project No.: 21250B

Introduction

The King County Parks and Recreation Division of the Department of Natural Resources and Parks (Parks) requested Otak, Inc. (Otak) to identify, characterize, and delineate critical areas within the vicinity of a proposed splash pad and cooling center at Petrovitsky Park located in unincorporated King County near Renton, Washington (Figure 1 – Vicinity Map). This Critical Areas Memorandum was completed by reviewing background information and investigating conditions at the project site. The Critical Areas Memorandum is to document baseline conditions and project compliance with King County Code (KCC) 21A.24 (Critical Areas) regarding frequently flooded areas, critical aquifer recharge areas (CARAs), wetlands, aquatic areas, and wildlife habitat conservation areas (WHCAs).

The project is located within Petrovitsky Park between the existing soccer fields (to the south), playground (to the west), baseball/softball fields (to the north), and a stormwater sand filter (to the east) (Figure 2 – Site Overview). The project is located in Section 36, Township 23 North, Range 5 East of the Willamette Meridian and in Water Resource Inventory Area (WRIA) 8 – Cedar Sammamish.

Methods

In accordance with federal, state, and local guidance and regulations, Otak biologists reviewed the project site and the immediate vicinity (within 200 feet) using the three-parameter approach detailed in the Corps of Engineers Wetlands Delineation Manual (USACE 1987), and the Regional Supplement to the Corps of Engineers Wetland Delineation Manual: Western Mountains, Valleys, and Coast Region (Version 2.0) (USACE 2010). Data on vegetation, soils, and hydrology were collected to document site conditions to support regulatory permitting for the project.

Background information reviewed prior to completing the field survey included Natural Resources Conservation Service (NRCS) soil data (NRCS 2024), U.S. Fish and Wildlife Service National Wetlands Inventory (NWI) (USFWS, 2024), Washington State Department of Fish and Wildlife (WDFW) Priority Habitat and Species (PHS) maps (WDFW 2024a), WDFW Statewide Integrated Fish Distribution (SWIFD) (WDFW 2024b), King County iMap (King County 2024), and aerial photo of the vicinity using public web-based mapping service (Google Maps 2024). No wetlands are mapped by NWI, WDFW, or King County in the project area. King County iMap shows no floodplain boundaries or CARAs in the project area.

Findings

During a site visit and field investigation on January 16, 2024, no wetlands, aquatic areas, or critical areas buffers were observed in the project site. The project site is covered by maintained lawn grasses occurring in uplands. No indicators of hydrophytic vegetation, hydric soils, or wetland hydrology were observed at the project site. Areas directly adjacent to the project site are covered by artificial turf athletic fields, natural turf athletic fields, playground facilities, and upland forest. Photographs of the site are attached.

An active osprey nest is located approximately 500 feet north of the project site on top of a baseball field light. For osprey, KCC designates the area within a 230-foot radius of an active nest as WHCA. Alterations are prohibited within 660 feet of an active nest between April 1 and September 30 (King County 2024b). King County Natural Resources Bird Group will handle the management of the nest prior to the start of project construction.

References

- Google. 2024. Google Imagery. Available at: <https://www.google.com/maps/>.
- King County. 2024a. Interactive Mapping Tool (iMap). Available at: <https://kingcounty.gov/services/gis/Maps/imap.aspx>.
- King County. 2024b. King County Code (KCC) 21A.24 – Critical Areas (Formerly Environmentally Sensitive Areas). Available at: https://aqua.kingcounty.gov/council/clerk/code/24-30_Title_21A.htm#_Toc122352145
- Natural Resources Conservation Service. 2024. Web Soil Survey. United States Department of Agriculture. Available at: <http://websoilsurvey.nrcs.usda.gov/>.
- [USACE] United States Army Corps of Engineers. 1987. Corps of Engineers Wetlands Delineation Manual. Technical Report. Y-87-1. Vicksburg, Mississippi: U.S. Army Corps of Engineers Environmental Laboratory.
- USACE. 2010. Regional Supplement to the Corps of Engineers Wetland Delineation Manual: Western Mountains, Valleys, and Coast Region, Version 2.0, ed. J.S. Wakeley, R.W. Lichvar, and C.V. Noble. ERDC/EL TR-10-3. Vicksburg, Mississippi: U.S. Army Engineer Research and Development Center.
- U.S. Fish and Wildlife Service (USFWS). 2024. National Wetlands Inventory website. U.S. Department of the Interior, Washington D.C. Available at: <http://www.fws.gov/wetlands>.
- [WDFW] Washington Department of Fish and Wildlife. 2024a. PHS on the Web. Available at: <https://geodataservices.wdfw.wa.gov/hp/phs/>.
- WDFW. 2024b. Statewide Integrated Fish Distribution. Available at: <https://geo.wa.gov/datasets/wdfw::statewide-washington-integrated-fish-distribution/about>

Attachments

Site Photographs

Figure 1 – Vicinity Map

Figure 2 – Site Overview (aerial map)

Figure 3 – Osprey Nest Location

Site Photographs (January 16, 2024)



Photo 1: Project Site viewed from the east.



Photo 2: Project Site viewed from the north.



Photo 3: Play area and surrounding area.



Photo 4: Osprey nest located north of Project Site

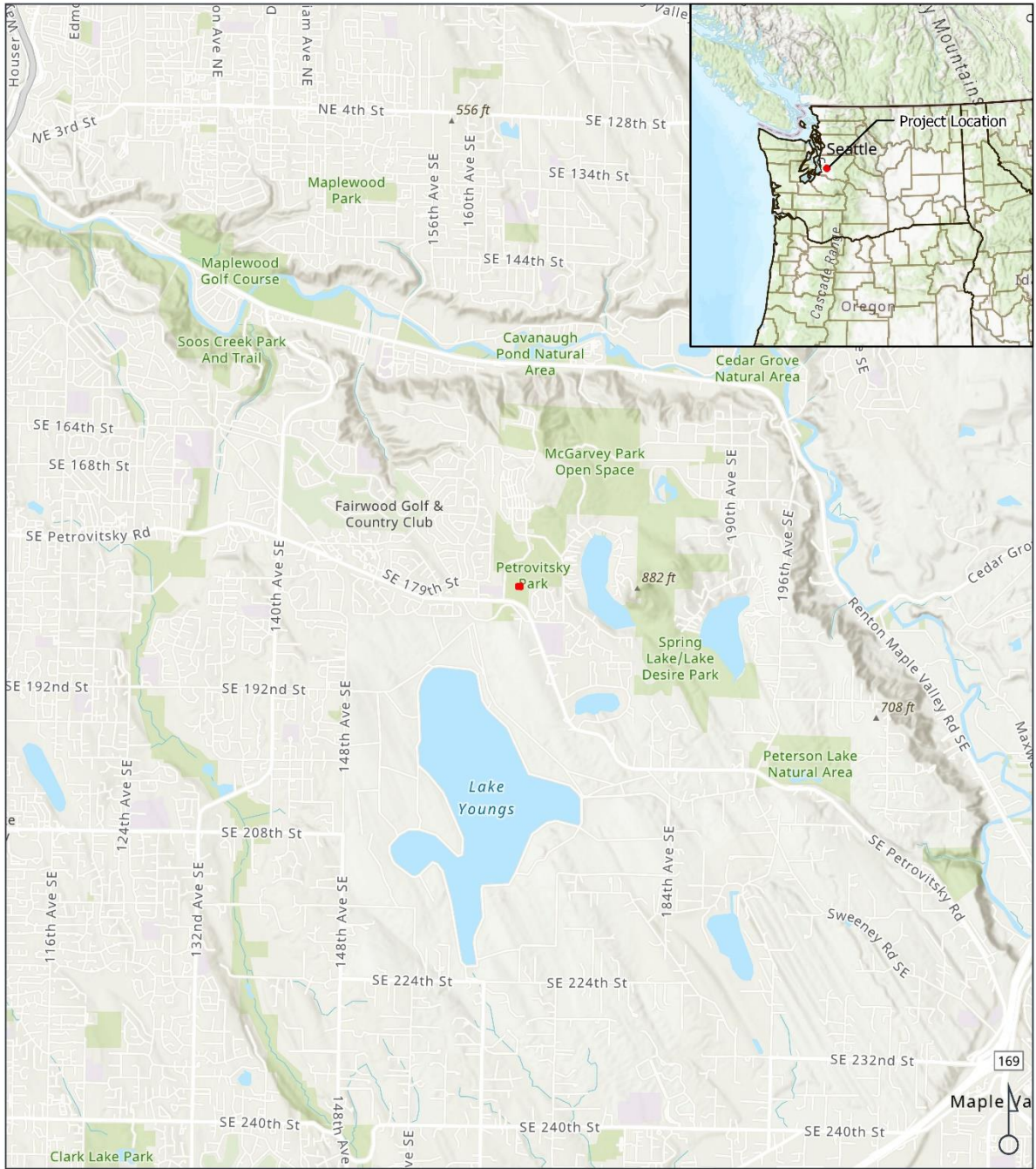


FIGURE 1
VICINITY MAP
PETROVITSKY PARK SPLASH PAD | 21250B
KING COUNTY, WASHINGTON

LEGEND
 Project Site

0 5,000 ft

Data Source:
Date: 1/18/2024
Disclaimer: This data is not to survey accuracy and is meant for planning purposes only.
D:\PROJECT\21250B\04 CAD\GIS\MXD\9\PetrovitskyPark_SplashPad_CAR_Figures.aprx





FIGURE 2
SITE OVERVIEW
PETROVITSKY PARK SPLASH PAD | 21250B
KING COUNTY, WASHINGTON

LEGEND
Project Site



Data Sources:
Date: 4/1/2024
Disclaimer: This data is not to survey accuracy and is meant for planning purposes only.
%otak.com\OTAK\PROJ\EC\1212002\21250B\04 CAD\GIS\MXD\9\PetrovitskyPark_SplashPad_GAR_Figures.aprx



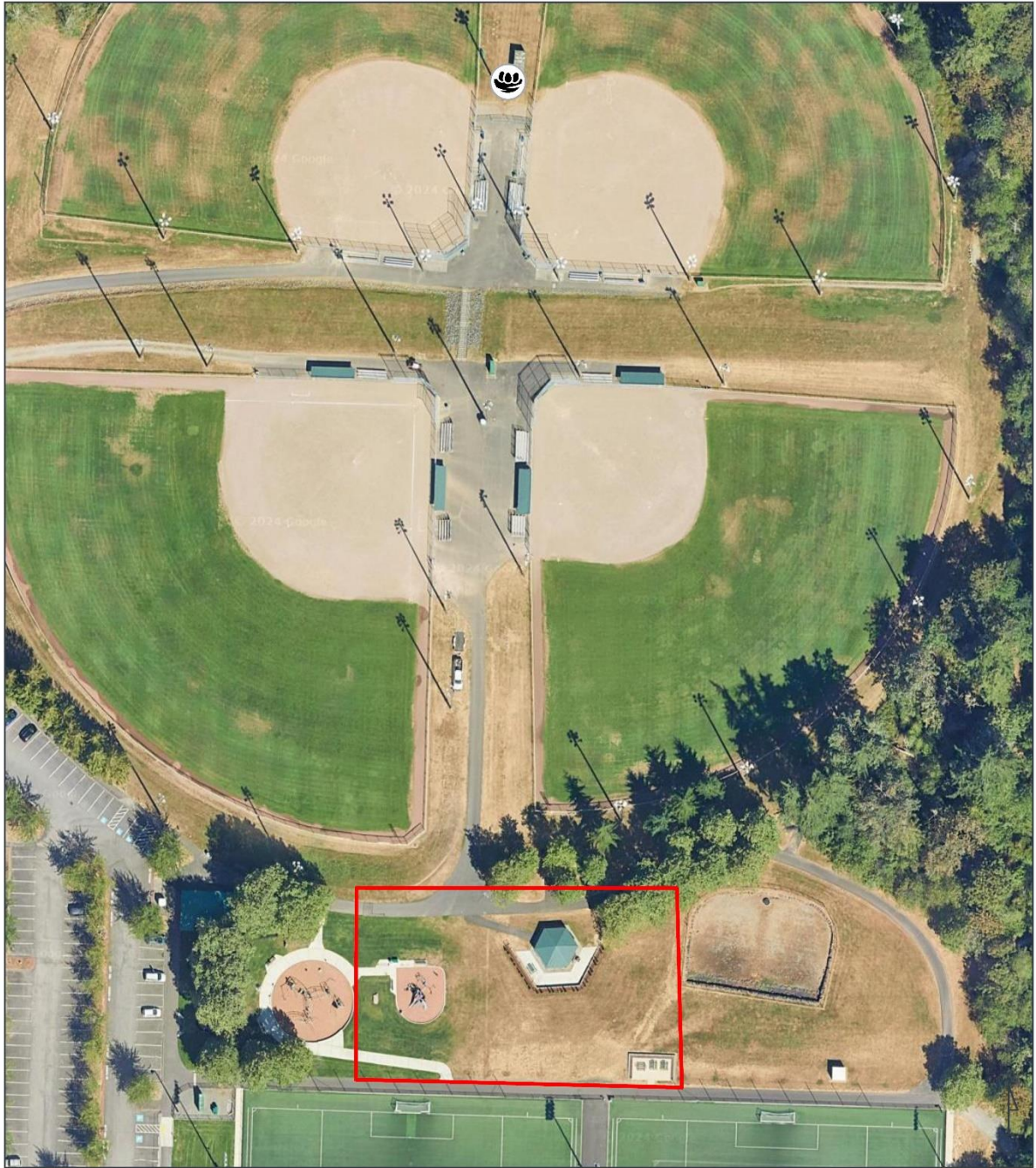


FIGURE 3
OSPREY NEST LOCATION
PETROVITSKY PARK SPLASH PAD | 21250B
KING COUNTY, WASHINGTON

LEGEND

-  Osprey Nest
-  Project Site



Data Sources:
Date: 4/1/2024
Disclaimer: This data is not to survey accuracy and is meant for planning purposes only.
%otak.com\OTAK\PRO\JEC\1212002\1250B\04 CAD\GIS\MXD\9\PetrovitskyPark_SplashPad_CAK_Figures.aprx

