



# King County Parks

## Taylor Mountain Forest *Sustainable Trail System Improvements*

SEPA Project Proposal  
August 2023

 King County

**PARKS**

Your Big Backyard

# Regional Location

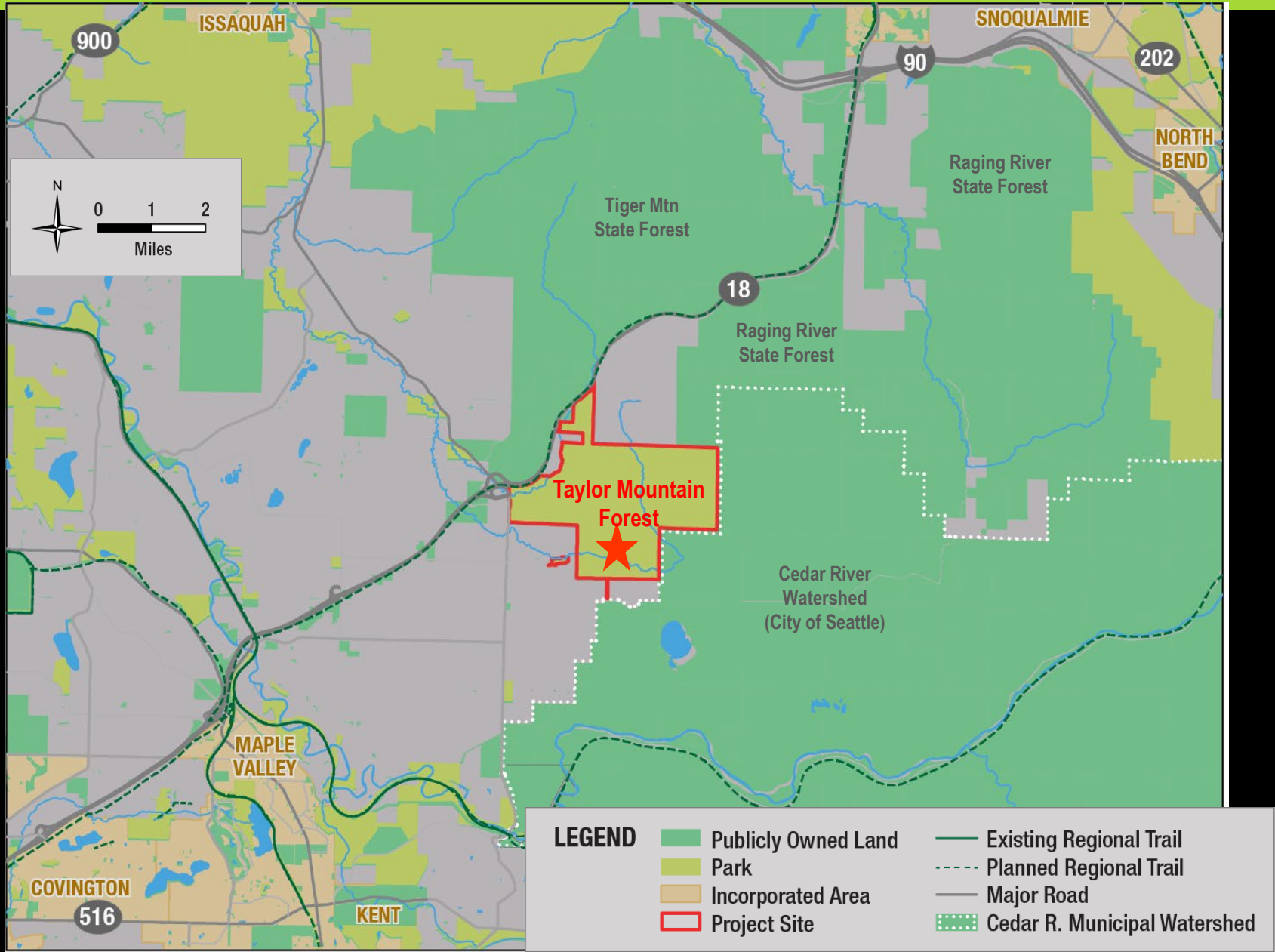


**WASHINGTON  
STATE**

**KING COUNTY**



# Site Location Map



# Trail System Concept Plan Map



**PARKS**

**Your Big Backyard**



# TAYLOR MOUNTAIN FOREST

## DRAFT TRAIL SYSTEM CONCEPT PLAN

### Map Legend

#### Publicly Owned Land

- King County Parks
- Other Public Land
- City of Seattle Watershed: Public Access on Trails Only
- City of Seattle Watershed: No Public Access

### Current Conditions

- Forest Road
- Unmaintained Forest Road (Non-Drivable)
- Trails (Designated)
- Trails (Designated) \*Seasonal Closure \*Renovation Planned
- Trails (Designated) \*Temporary Closure \*Renovation Planned

### Project Proposal

- New Trail or Trail Re-Route
- Total Miles = 4 (Approximate)
- \*Concept/Approximate Routing
- Decommission/Restoration Remove Unsustainable or Steep Trail Segment
- Total Miles = 1.5 (Approximate)
- New Trail Bridge (Quantity = 9) (Planned/Funding Secured)
- Anticipated New or Replacement Trail Bridge, Boardwalk or Culvert (Planned/No Current Funding)

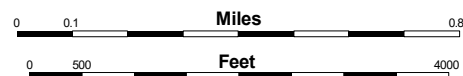
This segment of Holder Creek Trail travels through private land, has multiple stream crossings without structures that are impacting streams with fish habitat. No sustainable trail bridge installations or suitable alternative route in the vicinity is feasible.

This proposed new trail segment will add a short optional loop directly adjacent to the trailhead.

Trailhead Parking Area/Restrooms

#### Other basemap features

- unincorporated King County
- wetland
- freeway
- arterial street
- local street
- gate
- power line
- elevation contour (interval = 50 ft.)



Contour interval: 50 feet



Taylor Mountain Forest

City of Seattle Cedar River Watershed (no public access)

Additional coordination will be conducted with the City of Seattle, to evaluate this proposed trail segment.

Proposed re-routes and improvements to these segments of Carey Creek Trail will be subject to WA Dept. of Fish & Wildlife Hydraulic Project Approval stipulations, due to trail proximity to a regulated waterway.

King County

PARKS

Your Big Backyard

# Trail Bridge Design Visuals

(9 bridges with current secured funding)



**PARKS**

**Your Big Backyard**

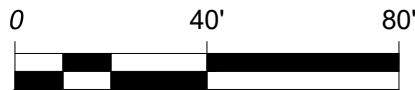
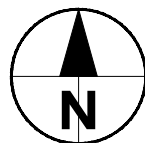
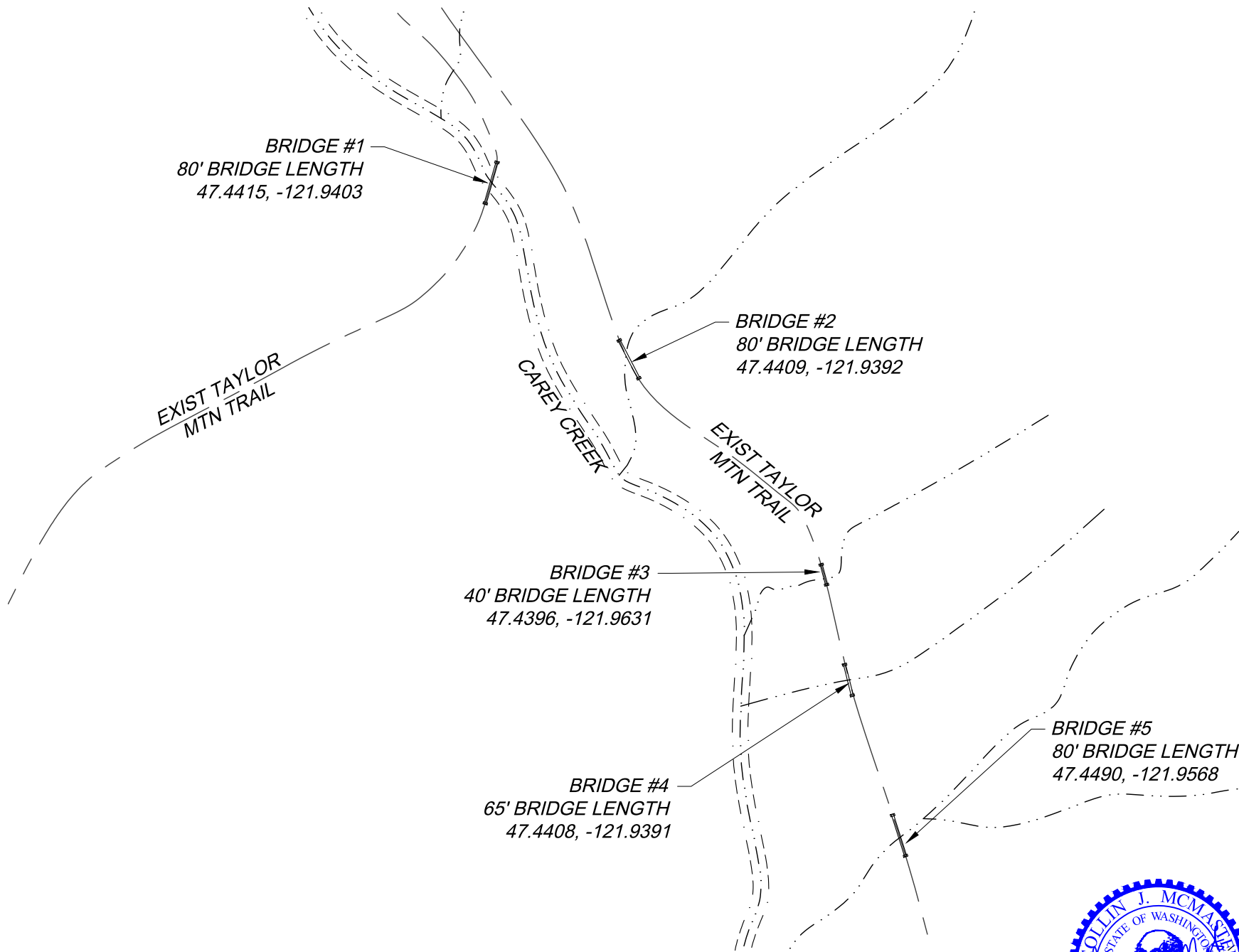


# Example Trail Bridge

- ✓ Weathering Steel Superstructure
- ✓ 54" Railing Height
- ✓ 5' Clear Travel Width
- ✓ Rough-Sawn Surface Western Red Cedar Decking
- ✓ Precast Concrete Abutments







A  
C-1

## PLAN VIEW

SCALE: 1" = 250'



1/6/2023

KING COUNTY  
EQUESTRIAN TRAIL BRIDGES

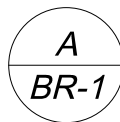
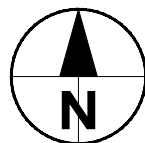
KING COUNTY  
BRIDGE LOCATION #1  
47.44135, -121.94010

JOB NO: 21-DNR  
DRAWN: CJM  
CHECKED: CJM  
DATE: 1/6/2023

**Vector**  
ENGINEERING INC.  
2724 Black Lake Boulevard SW Suite 202  
Turnwater, WA 98512  
ph: (360) 352-2477 fax: (360) 352-0179 E-mail: admin@vectorengineeringinc.com

C-1  
COVER

SHT 1 OF 4



**PLAN VIEW**  
SCALE: 1" = 40'



1/6/2023

CAREY CREEK  
TRIBUTARY

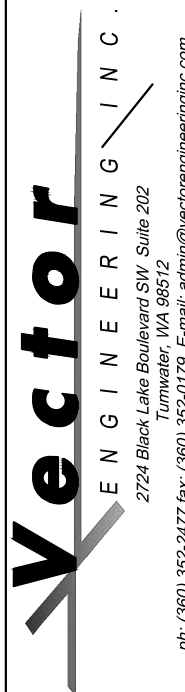
EXIST TAYLOR  
MTN TRAIL

EXIST TAYLOR  
MTN TRAIL

BRIDGE #1  
80' BRIDGE LENGTH  
47.44150, -121.94029

CAREY CREEK

OHWM



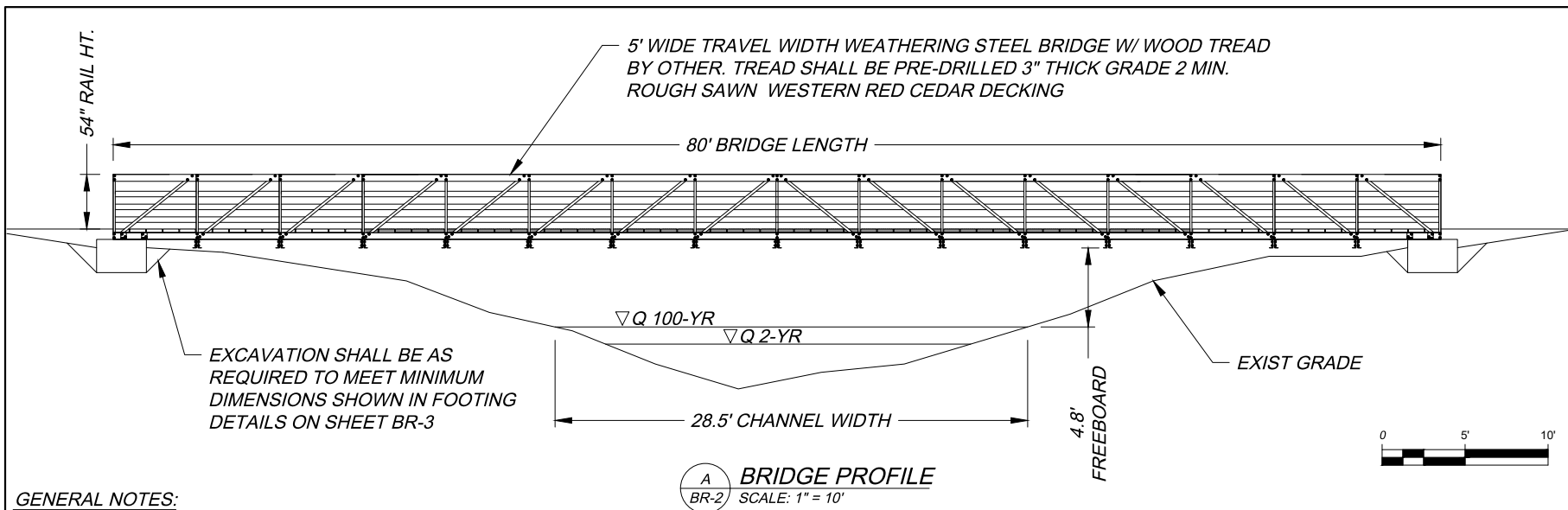
**BR-1**  
PLAN

SHT 2 OF 4

KING COUNTY  
EQUESTRIAN TRAIL BRIDGES

KING COUNTY  
BRIDGE LOCATION #1  
47.44135, -121.94010

JOB NO: C/JM  
DRAWN: C/JM  
CHECKED: 21-DNR  
DATE:



#### GENERAL NOTES:

- BRIDGES MAY BE CONSTRUCTED AT UP TO 2% LONGITUDINAL GRADE. BEARINGS SHALL BE SET LEVEL TRANSVERSELY AND TO MATCH GRADE LONGITUDINALLY.
- ALL FOUNDATION MATERIALS AND WORK SHALL BE IN ACCORD AND CONFORMANCE WITH THE WSDOT STANDARD SPECIFICATIONS FOR ROAD, BRIDGE, AND MUNICIPAL CONSTRUCTION, 2022 EDITION, ENGLISH UNITS.
- BRIDGE FOUNDATION DESIGN IS IN ACCORD WITH CURRENT AMERICAN CONCRETE INSTITUTE (ACI) 318 MANUAL, AND AN ALLOWABLE SERVICE LEVEL SOIL BEARING PRESSURE OF 2,000 PSF IS ASSUMED AS MINIMUM.
- BEARINGS SHALL BE ELASTOMERIC AASHTO GRADE BEARING PADS OF THE SIZE AND THICKNESS REQUIRED BY SUPERSTRUCTURE ENGINEER.
- APPROACH FILLS SHOWN ARE DEMONSTRATION ONLY. ACTUAL FILL HEIGHTS TBD IN-FIELD. MINIMUM FILL DIMENSIONS SHALL BE PER DETAILS.

#### CONCRETE

- STRUCTURAL CONCRETE WORK SHALL BE IN ACCORD WITH SECTIONS 1903 THROUGH 1907 OF THE IBC AND ACI 318-19, "STANDARD SPECIFICATION FOR STRUCTURAL CONCRETE".
- CONCRETE SHALL HAVE A MINIMUM SPECIFIED COMPRESSIVE STRENGTH (F'C) OF 3000 PSI AT 28 DAYS.
- DEFORMED STEEL REINFORCING BARS SHALL BE: ASTM A 615, A 616, OR A 706, GRADE 60.
- MINIMUM CONCRETE COVER OF REINFORCING STEEL SHALL BE:  
CONCRETE EXPOSED TO WEATHER: 2"  
CONCRETE CAST AGAINST EARTH: 3"

#### EARTHWORK AND FOUNDATION PREPARATION

- IMPORTED STRUCTURAL FILL SHALL BE IN ACCORD WITH 2022 WSDOT STANDARD SPECIFICATIONS 4-02 AND 9-03.10 FOR "GRAVEL BASE."
- SITE SOILS MAY BE USED, AS APPROVED BY GEOTECHNICAL ENGINEER, FOR STRUCTURAL FILL AND LEVELING COURSES BASED ON THE FOLLOWING:
  - MATERIAL SHALL BE EXCAVATED FROM BELOW WOODY/ORGANIC LAYER TO SAND/GRAVEL LAYER - COBBLES LARGER THAN 2-1/2" SHALL BE REMOVED
  - MATERIAL SHALL BE PLACED IN LIFTS NO DEEPER THAN 6".
  - ADJUST MOISTURE CONTENT OF MATERIAL TO PRODUCE A FIRM-STABLE EMBANKMENT. SITE WATER MAY BE USED TO STABILIZE SOIL.
  - COMPACT EACH LIFT WITH NO LESS THAN 3 PASSES WITH A HAND OR VIBRATORY COMPACTOR.
  - FINAL STRUCTURAL FILL PLACEMENT AND COMPACTION SHALL PRODUCE A FIRM UNYIELDING BASE THAT MATCHES OR OUT-PERFORMS NATIVE SOILS IN THE SAME AREA.



1/6/2023

KING COUNTY  
EQUESTRIAN TRAIL BRIDGES

KING COUNTY  
BRIDGE LOCATION #1  
47.44135, -121.94010

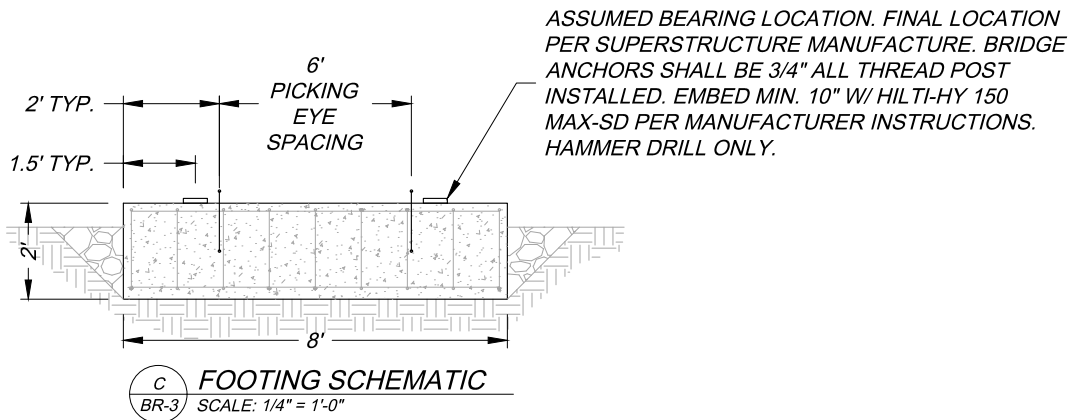
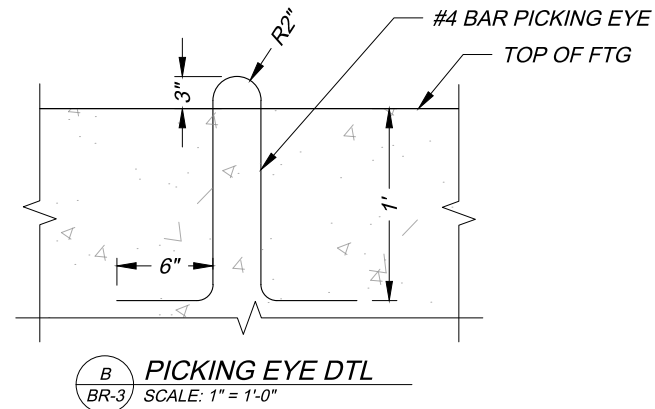
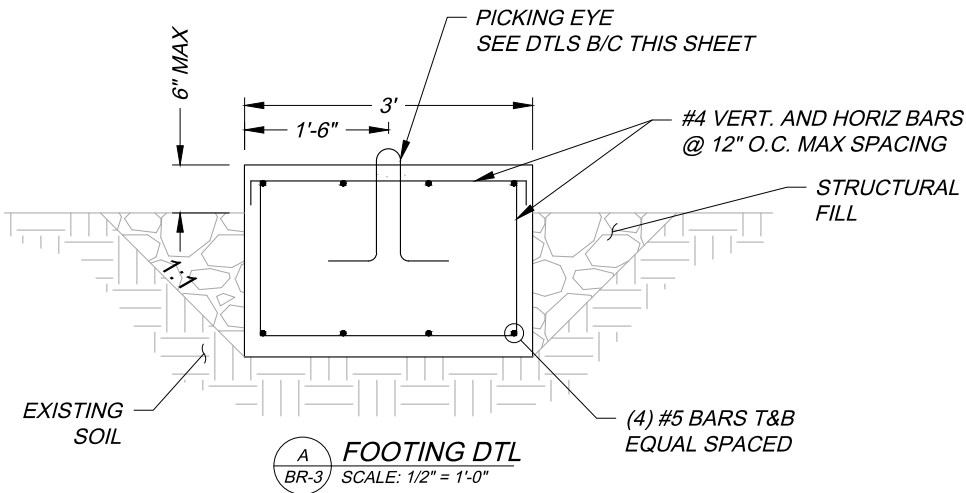
JOB NO: 21-DNR  
DRAWN: CJM  
CHECKED: CJM  
DATE: 1/6/2023

**Vector**  
ENGINEERING INC.  
2724 Black Lake Boulevard SW, Suite 202  
Tumwater, WA 98512  
ph: (360) 352-2477 fax: (360) 352-0179 E-mail: admin@vectorengineeringinc.com

**BR-2**  
DETAILS &  
NOTES

SHT 3 OF 4





1/6/2023

**Vector**  
ENGINEERING INC.  
2724 Black Lake Boulevard SW Suite 202  
Turnwater, WA 98512  
ph: (360) 352-2477 fax: (360) 352-0179 E-mail: admin@vectorengineeringinc.com

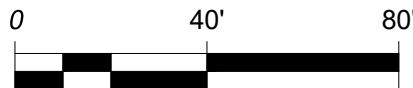
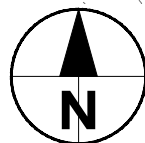
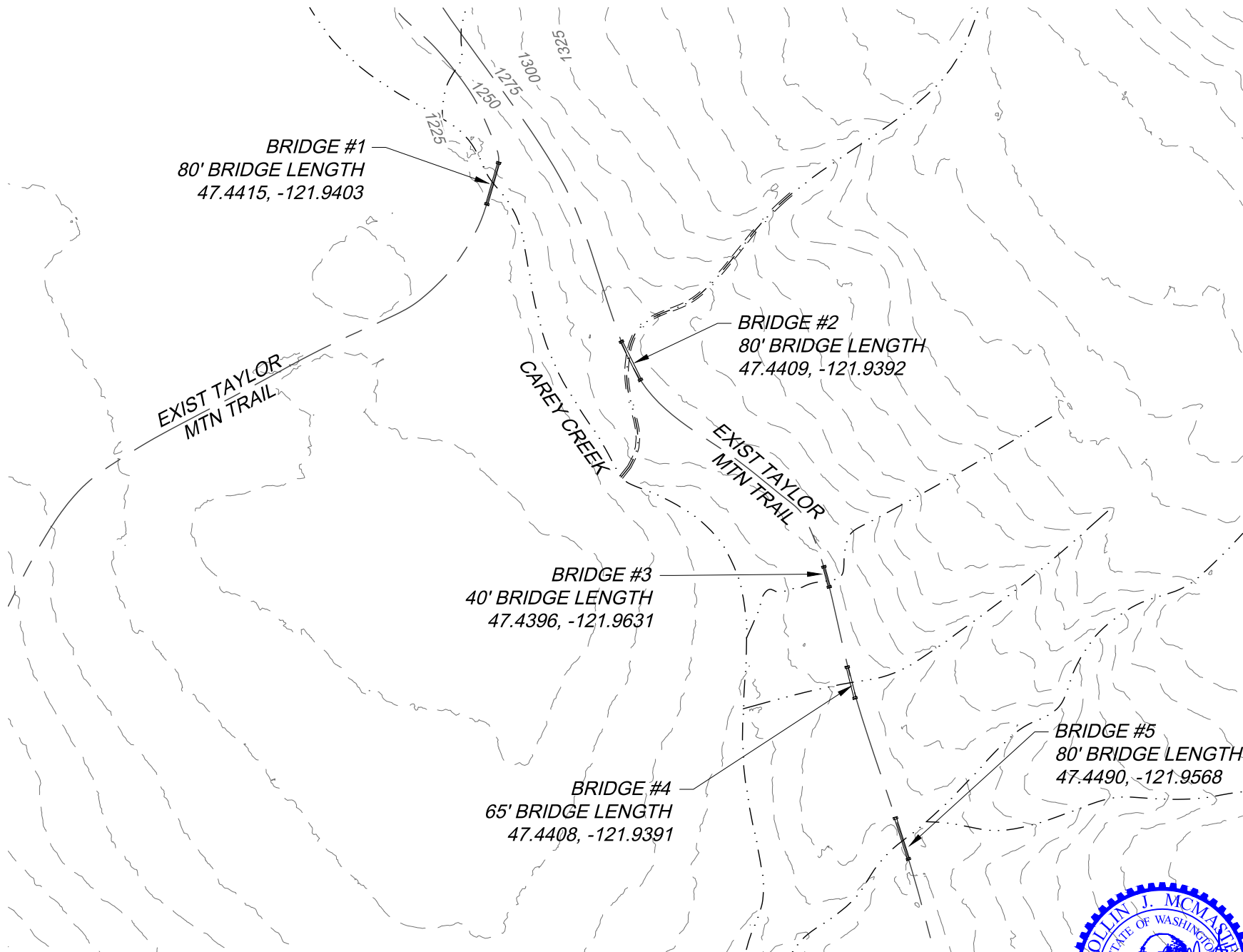
**BR-3**  
DETAILS

SHT 4 OF 4

KING COUNTY  
EQUESTRIAN TRAIL BRIDGES

KING COUNTY  
BRIDGE LOCATION #1  
47.44135, -121.94010

JOB NO: 21-DNR  
DRAWN: CJM  
CHECKED: CJM  
DATE: 1/6/2023



A  
C-1

# PLAN VIEW

SCALE: 1" = 250'



1/6/2022

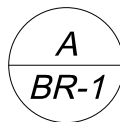
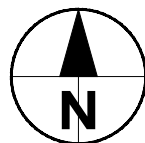
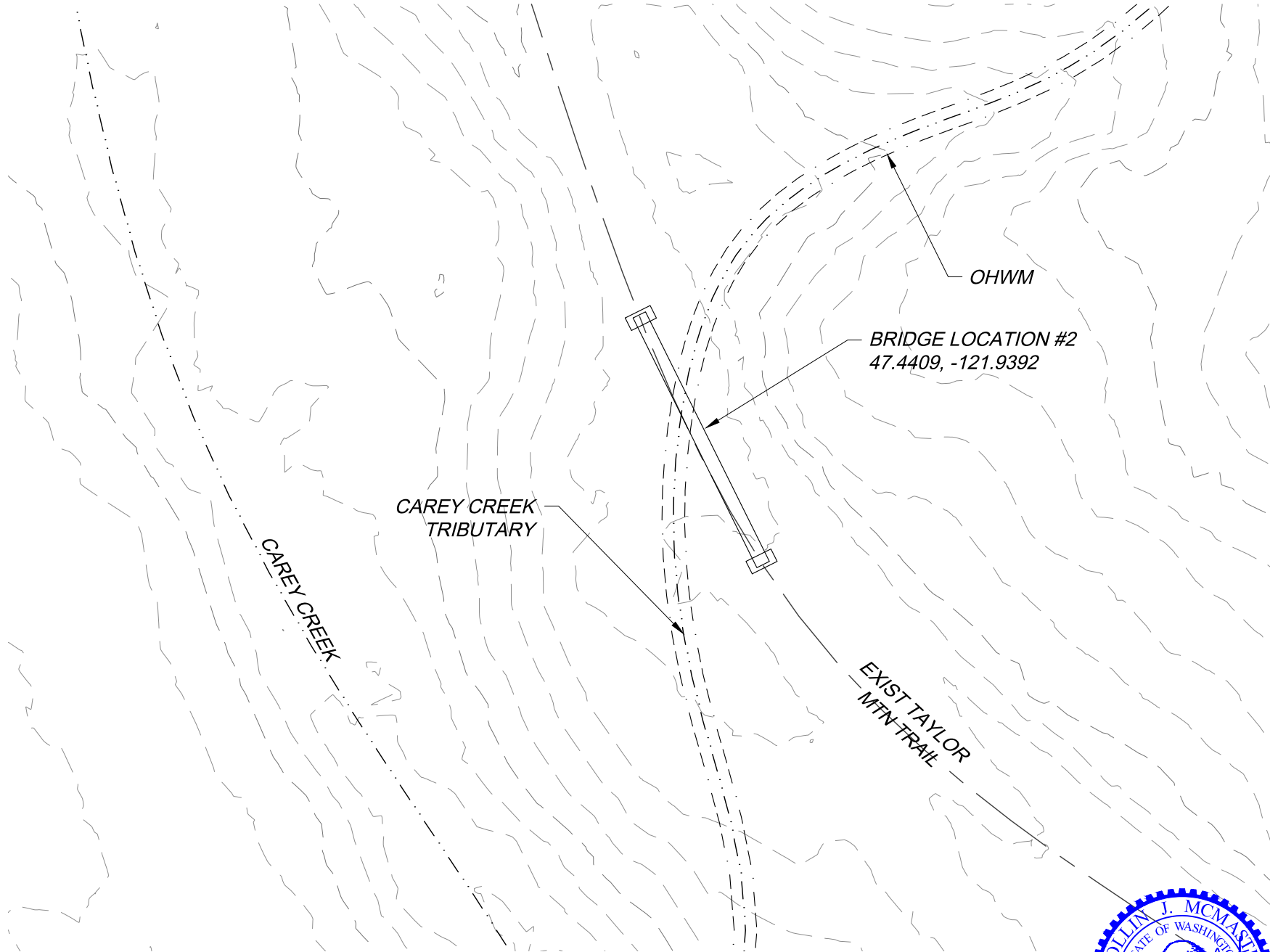
**Vector**  
ENGINEERING INC.  
2724 Black Lake Boulevard SW Suite 202  
Tumwater, WA 98512  
ph: (360) 352-2477 fax: (360) 352-0179 E-mail: admin@vectorengineeringinc.com

KING COUNTY  
EQUESTRIAN TRAIL BRIDGES

KING COUNTY  
BRIDGE LOCATION #2  
47.4409, -121.9392

JOB NO: 21-DNR  
DRAWN: CJM  
CHECKED: CJM  
DATE: 1/6/2022

C-1  
COVER



**PLAN VIEW**  
SCALE: 1" = 40'

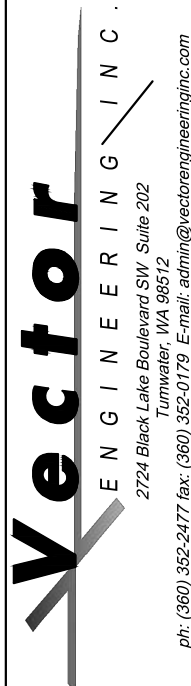


1/6/2022

KING COUNTY  
EQUESTRIAN TRAIL BRIDGES

KING COUNTY  
BRIDGE LOCATION #2  
47.4409, -121.9392

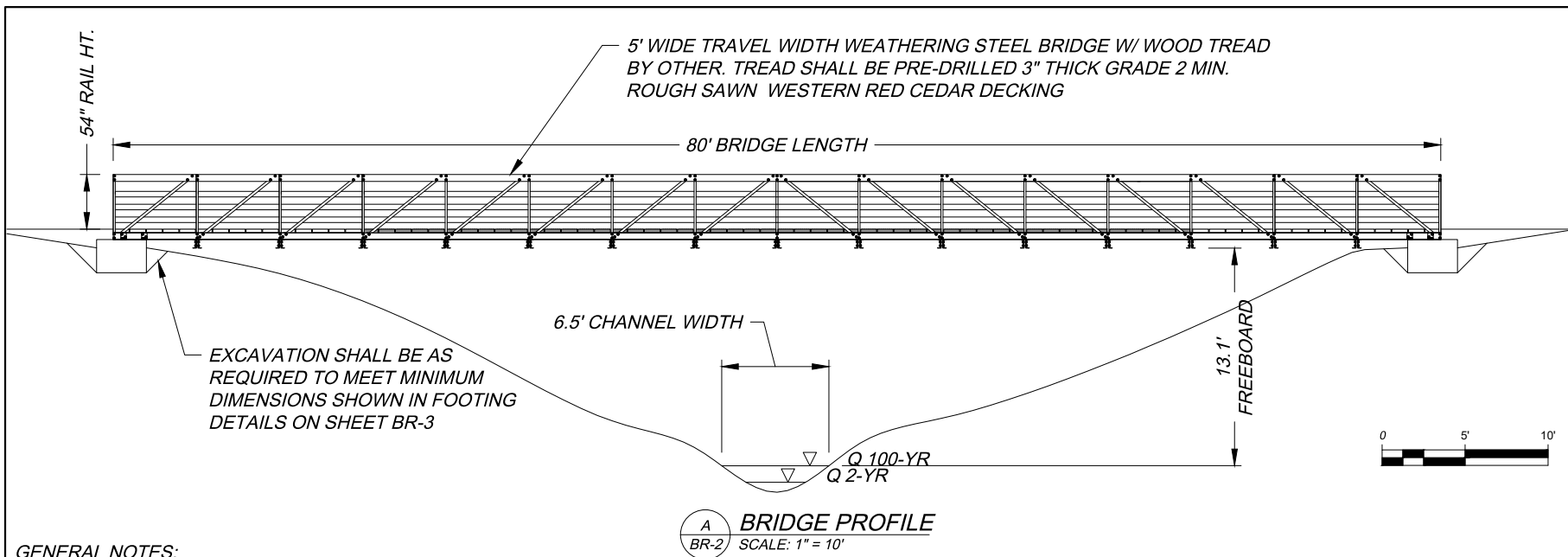
JOB NO: CJM  
DRAWN: CJM  
CHECKED: 21-DNR  
DATE:



**BR-1**  
PLAN

SHT 2 OF 4





#### GENERAL NOTES:

- BRIDGES MAY BE CONSTRUCTED AT UP TO 2% LONGITUDINAL GRADE. BEARINGS SHALL BE SET LEVEL TRANSVERSELY AND TO MATCH GRADE LONGITUDINALLY.
- ALL FOUNDATION MATERIALS AND WORK SHALL BE IN ACCORD AND CONFORMANCE WITH THE WSDOT STANDARD SPECIFICATIONS FOR ROAD, BRIDGE, AND MUNICIPAL CONSTRUCTION, 2022 EDITION, ENGLISH UNITS.
- BRIDGE FOUNDATION DESIGN IS IN ACCORD WITH CURRENT AMERICAN CONCRETE INSTITUTE (ACI) 318 MANUAL, AND AN ALLOWABLE SERVICE LEVEL SOIL BEARING PRESSURE OF 2,000 PSF IS ASSUMED AS MINIMUM.
- BEARINGS SHALL BE ELASTOMERIC AASHTO GRADE BEARING PADS OF THE SIZE AND THICKNESS REQUIRED BY SUPERSTRUCTURE ENGINEER.
- APPROACH FILLS SHOWN ARE DEMONSTRATION ONLY. ACTUAL FILL HEIGHTS TBD IN-FIELD. MINIMUM FILL DIMENSIONS SHALL BE PER DETAILS.

#### CONCRETE

- STRUCTURAL CONCRETE WORK SHALL BE IN ACCORD WITH SECTIONS 1903 THROUGH 1907 OF THE IBC AND ACI 318-19, "STANDARD SPECIFICATION FOR STRUCTURAL CONCRETE".
- CONCRETE SHALL HAVE A MINIMUM SPECIFIED COMPRESSIVE STRENGTH (F'C) OF 3000 PSI AT 28 DAYS.
- DEFORMED STEEL REINFORCING BARS SHALL BE: ASTM A 615, A 616, OR A 706, GRADE 60.
- MINIMUM CONCRETE COVER OF REINFORCING STEEL SHALL BE:  
CONCRETE EXPOSED TO WEATHER: 2"  
CONCRETE CAST AGAINST EARTH: 3"

#### EARTHWORK AND FOUNDATION PREPARATION

- IMPORTED STRUCTURAL FILL SHALL BE IN ACCORD WITH 2022 WSDOT STANDARD SPECIFICATIONS 4-02 AND 9-03.10 FOR "GRAVEL BASE."
- SITE SOILS MAY BE USED, AS APPROVED BY GEOTECHNICAL ENGINEER, FOR STRUCTURAL FILL AND LEVELING COURSES BASED ON THE FOLLOWING:
  - MATERIAL SHALL BE EXCAVATED FROM BELOW WOODY/ORGANIC LAYER TO SAND/GRAVEL LAYER - COBBLES LARGER THAN 2-1/2" SHALL BE REMOVED
  - MATERIAL SHALL BE PLACED IN LIFTS NO DEEPER THAN 6".
  - ADJUST MOISTURE CONTENT OF MATERIAL TO PRODUCE A FIRM-STABLE EMBANKMENT. SITE WATER MAY BE USED TO STABILIZE SOIL.
  - COMPACT EACH LIFT WITH NO LESS THAN 3 PASSES WITH A HAND OR VIBRATORY COMPACTOR.
  - FINAL STRUCTURAL FILL PLACEMENT AND COMPACTION SHALL PRODUCE A FIRM UNYIELDING BASE THAT MATCHES OR OUT-PERFORMS NATIVE SOILS IN THE SAME AREA.



1/6/2022

KING COUNTY  
EQUESTRIAN TRAIL BRIDGES

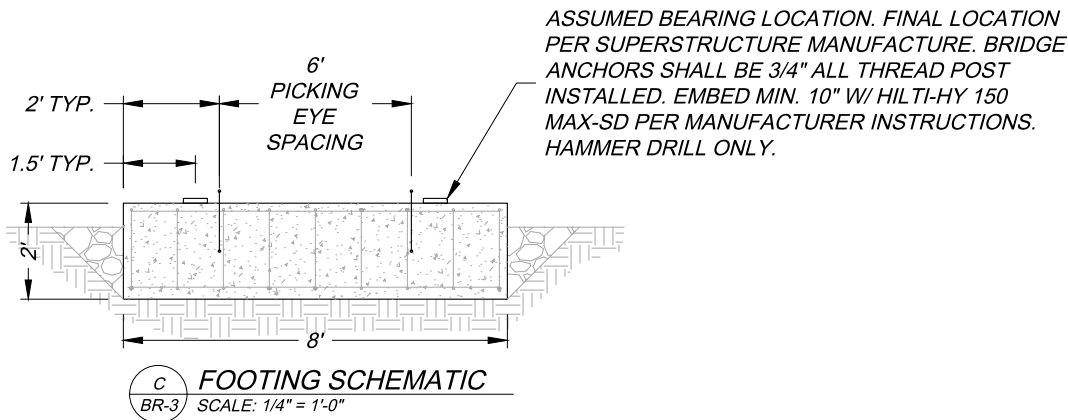
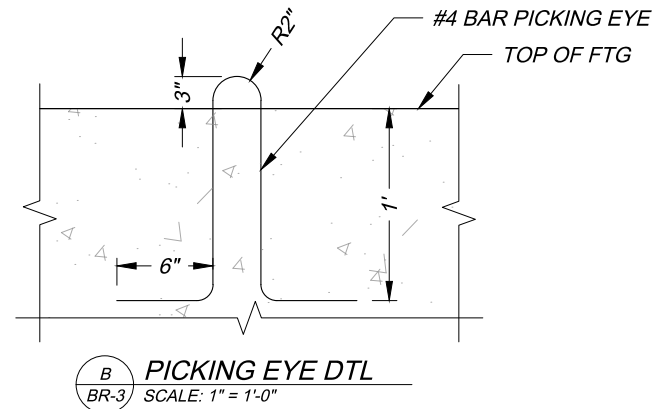
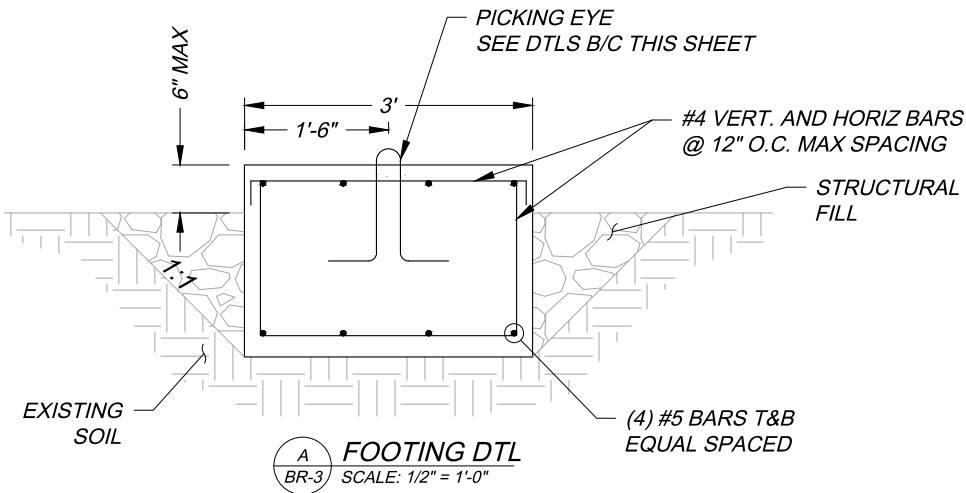
KING COUNTY  
BRIDGE LOCATION #2  
47.4409, -121.9392

JOB NO: 21-DNR  
DRAWN: CJM  
CHECKED: CJM  
DATE: 1/6/2022

**Vector**  
ENGINEERING INC.  
2724 Black Lake Boulevard SW, Suite 202  
Turnwater, WA 98512  
ph: (360) 352-2477 fax: (360) 352-0179 E-mail: admin@vectorengineeringinc.com

**BR-2**  
DETAILS &  
NOTES

SHT 3 OF 4



1/6/2022

KING COUNTY  
EQUESTRIAN TRAIL BRIDGES

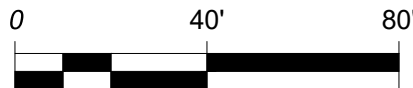
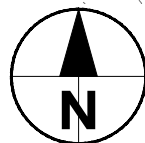
KING COUNTY  
BRIDGE LOCATION #2  
47.4409, -121.9392

JOB NO: 21-DNR  
DRAWN: CJM  
CHECKED: CJM  
DATE: 1/6/2022

**Vector**  
ENGINEERING INC.  
2724 Black Lake Boulevard SW Suite 202  
Turnwater, WA 98512  
ph: (360) 352-2477 fax: (360) 352-0179 E-mail: admin@vectorengineeringinc.com

**BR-3**  
DETAILS

SHT 4 OF 4



A  
C-1

**PLAN VIEW**

SCALE: 1" = 250'



1/6/2022

BRIDGE #1  
80' BRIDGE LENGTH  
47.4415, -121.9403

BRIDGE #2  
80' BRIDGE LENGTH  
47.4409, -121.9392

BRIDGE #3  
40' BRIDGE LENGTH  
47.4396, -121.9631

BRIDGE #4  
65' BRIDGE LENGTH  
47.4408, -121.9391

BRIDGE #5  
80' BRIDGE LENGTH  
47.4490, -121.9568

EXIST TAYLOR  
MTN TRAIL

CAREY CREEK

EXIST TAYLOR  
MTN TRAIL

**Vector**  
ENGINEERING INC.  
2724 Black Lake Boulevard SW Suite 202  
Turnwater, WA 98512  
ph: (360) 352-2477 fax: (360) 352-0179 E-mail: admin@vectorengineeringinc.com

KING COUNTY  
EQUESTRIAN TRAIL BRIDGES

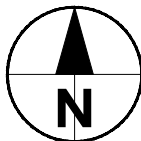
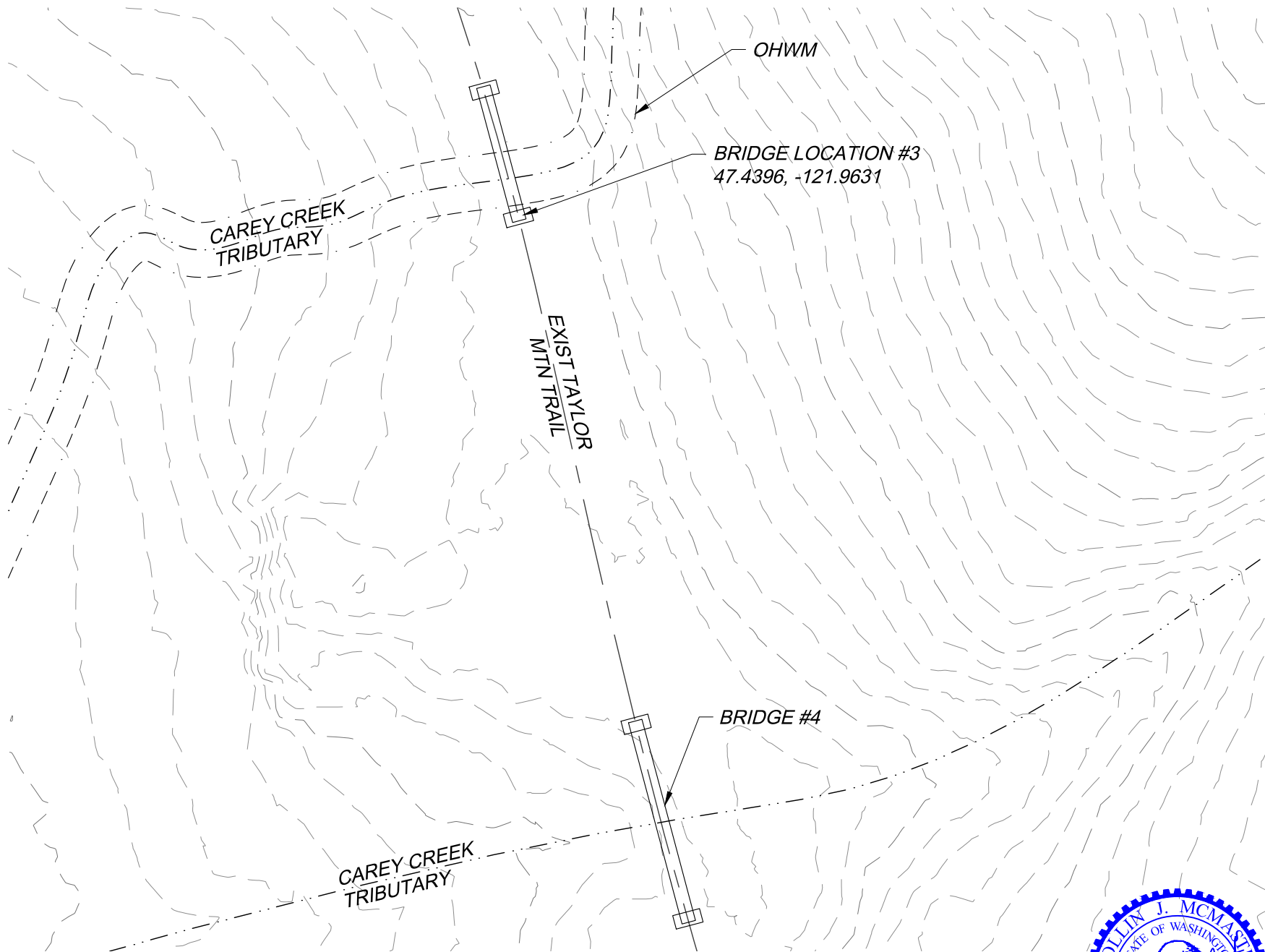
KING COUNTY  
BRIDGE LOCATION #3  
47.4396, -121.9631

JOB NO: 21-DNR  
DRAWN: CJM  
CHECKED: RLM  
DATE: 1/6/2022

**C-1**  
COVER

SHT 1 OF 4





A  
BR-1

**PLAN VIEW**  
SCALE: 1" = 40'



1/6/2022

KING COUNTY  
EQUESTRIAN TRAIL BRIDGES

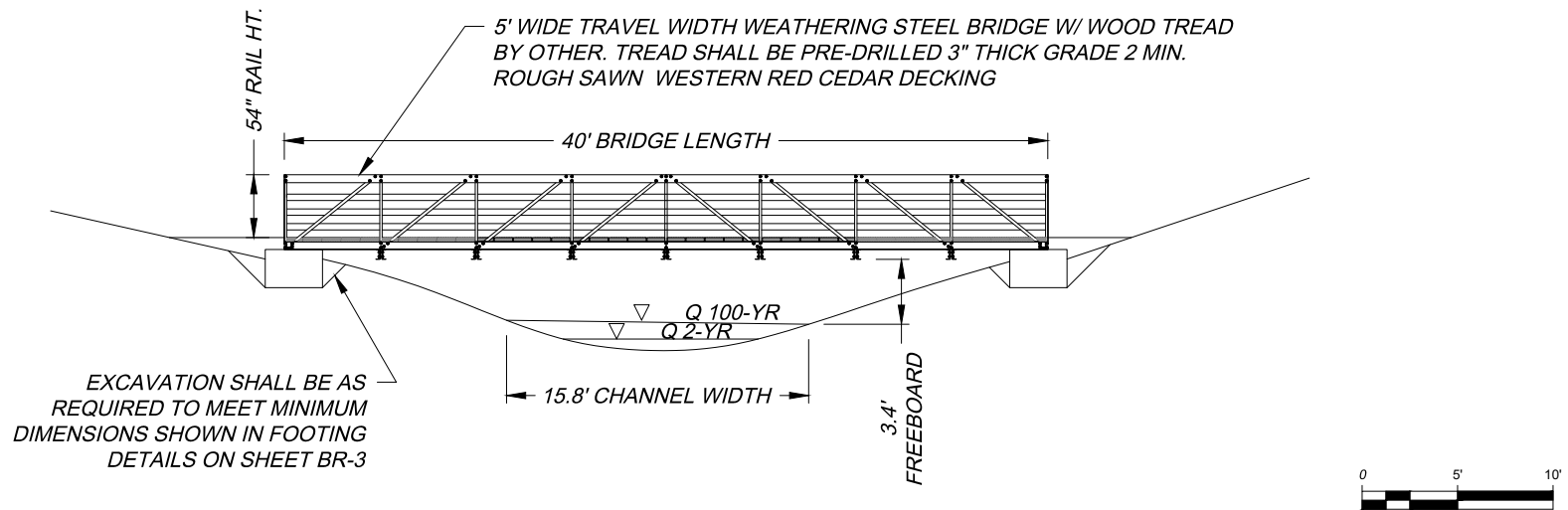
KING COUNTY  
BRIDGE LOCATION #3  
47.4396, -121.9631

JOB NO: RLM  
DRAWN: RLM  
CHECKED: 21-DNR  
DATE:

**Vector**  
ENGINEERING INC.  
2724 Black Lake Boulevard SW Suite 202  
Turnwater, WA 98512  
ph: (360) 352-2477 fax: (360) 352-0179 E-mail: admin@vectorengineeringinc.com

**BR-1**  
PLAN

SHT 2 OF 4



**BRIDGE PROFILE**  
SCALE: 1" = 10'

#### GENERAL NOTES:

- BRIDGES MAY BE CONSTRUCTED AT UP TO 2% LONGITUDINAL GRADE. BEARINGS SHALL BE SET LEVEL TRANSVERSELY AND TO MATCH GRADE LONGITUDINALLY.
- ALL FOUNDATION MATERIALS AND WORK SHALL BE IN ACCORD AND CONFORMANCE WITH THE WSDOT STANDARD SPECIFICATIONS FOR ROAD, BRIDGE, AND MUNICIPAL CONSTRUCTION, 2022 EDITION, ENGLISH UNITS.
- BRIDGE FOUNDATION DESIGN IS IN ACCORD WITH CURRENT AMERICAN CONCRETE INSTITUTE (ACI) 318 MANUAL, AND AN ALLOWABLE SERVICE LEVEL SOIL BEARING PRESSURE OF 2,000 PSF IS ASSUMED AS MINIMUM.
- BEARINGS SHALL BE ELASTOMERIC AASHTO GRADE BEARING PADS OF THE SIZE AND THICKNESS REQUIRED BY SUPERSTRUCTURE ENGINEER.
- APPROACH FILLS SHOWN ARE DEMONSTRATION ONLY. ACTUAL FILL HEIGHTS TBD IN-FIELD. MINIMUM FILL DIMENSIONS SHALL BE PER DETAILS.

#### CONCRETE

- STRUCTURAL CONCRETE WORK SHALL BE IN ACCORD WITH SECTIONS 1903 THROUGH 1907 OF THE IBC AND ACI 318-19, "STANDARD SPECIFICATION FOR STRUCTURAL CONCRETE".
- CONCRETE SHALL HAVE A MINIMUM SPECIFIED COMPRESSIVE STRENGTH (F'C) OF 3000 PSI AT 28 DAYS.
- DEFORMED STEEL REINFORCING BARS SHALL BE: ASTM A 615, A 616, OR A 706, GRADE 60.
- MINIMUM CONCRETE COVER OF REINFORCING STEEL SHALL BE:  
CONCRETE EXPOSED TO WEATHER: 2"  
CONCRETE CAST AGAINST EARTH: 3"

#### EARTHWORK AND FOUNDATION PREPARATION

- IMPORTED STRUCTURAL FILL SHALL BE IN ACCORD WITH 2022 WSDOT STANDARD SPECIFICATIONS 4-02 AND 9-03.10 FOR "GRAVEL BASE."
- SITE SOILS MAY BE USED, AS APPROVED BY GEOTECHNICAL ENGINEER, FOR STRUCTURAL FILL AND LEVELING COURSES BASED ON THE FOLLOWING:
  - MATERIAL SHALL BE EXCAVATED FROM BELOW WOODY/ORGANIC LAYER TO SAND/GRAVEL LAYER - COBBLES LARGER THAN 2-1/2" SHALL BE REMOVED
  - MATERIAL SHALL BE PLACED IN LIFTS NO DEEPER THAN 6".
  - ADJUST MOISTURE CONTENT OF MATERIAL TO PRODUCE A FIRM-STABLE EMBANKMENT. SITE WATER MAY BE USED TO STABILIZE SOIL.
  - COMPACT EACH LIFT WITH NO LESS THAN 3 PASSES WITH A HAND OR VIBRATORY COMPACTOR.
  - FINAL STRUCTURAL FILL PLACEMENT AND COMPACTION SHALL PRODUCE A FIRM UNYIELDING BASE THAT MATCHES OR OUT-PERFORMS NATIVE SOILS IN THE SAME AREA.



1/6/2022

KING COUNTY  
EQUESTRIAN TRAIL BRIDGES

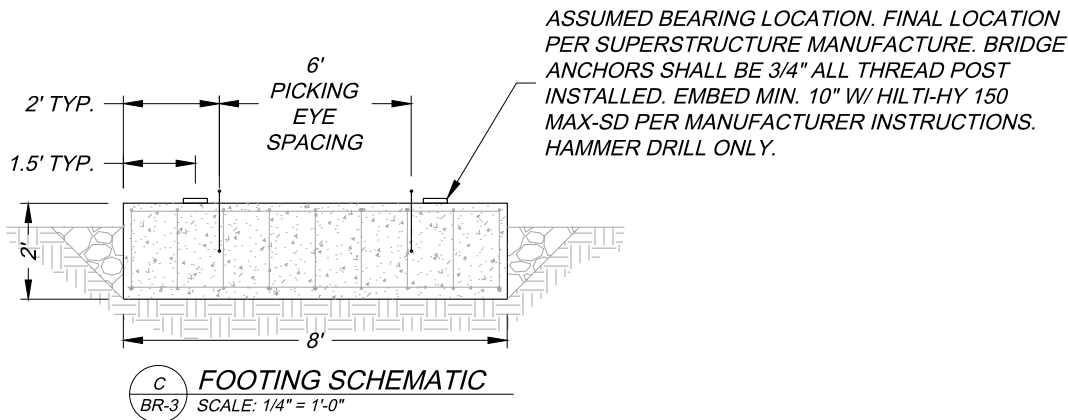
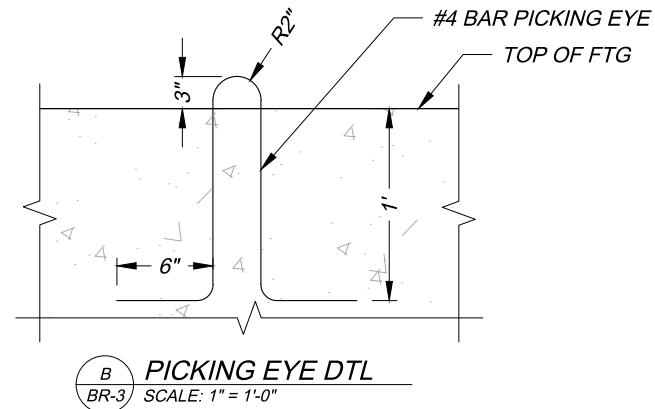
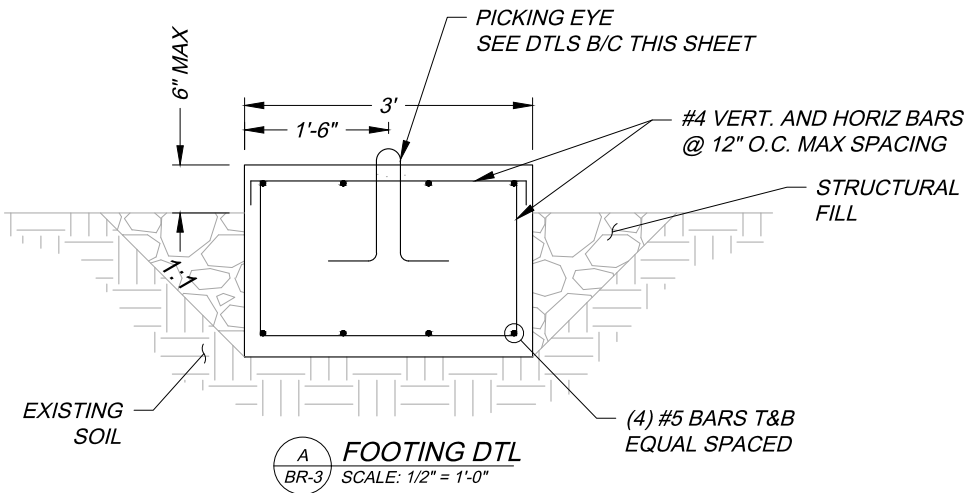
KING COUNTY  
BRIDGE LOCATION #3  
47.4396, -121.9631

JOB NO: 21-DNR  
DRAWN: CJM  
CHECKED: RLM  
DATE: 1/6/2022

**Vector**  
ENGINEERING INC.  
2724 Black Lake Boulevard SW, Suite 202  
Turnwater, WA 98512  
ph: (360) 352-2477 fax: (360) 352-0179 E-mail: admin@vectorengineeringinc.com

**BR-2**  
DETAILS &  
NOTES

SHT 3 OF 4



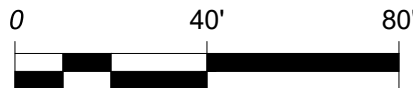
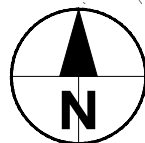
1/6/2022

KING COUNTY  
EQUESTRIAN TRAIL BRIDGES

JOB NO: 21-DNR	KING COUNTY BRIDGE LOCATION #3 47.4396, -121.9631
DRAWN: CJM	
CHECKED: RLM	
DATE: 1/6/2022	

**Vector**  
ENGINEERING INC.  
2724 Black Lake Boulevard SW, Suite 202  
Turnwater, WA 98512  
ph: (360) 352-2477 fax: (360) 352-0179 E-mail: admin@vectorengineeringinc.com

**BR-3**  
DETAILS



A  
C-1

## PLAN VIEW

SCALE: 1" = 250'



1/6/2023

BRIDGE #1  
80' BRIDGE LENGTH  
47.4415, -121.9403

BRIDGE #2  
80' BRIDGE LENGTH  
47.4409, -121.9392

BRIDGE #3  
40' BRIDGE LENGTH  
47.4396, -121.9631

BRIDGE #4  
65' BRIDGE LENGTH  
47.4408, -121.9391

BRIDGE #5  
80' BRIDGE LENGTH  
47.4490, -121.9568

EXIST TAYLOR  
MTN TRAIL

CAREY CREEK

EXIST TAYLOR  
MTN TRAIL

**Vector**  
ENGINEERING INC.  
2724 Black Lake Boulevard SW Suite 202  
Turnwater, WA 98512  
ph: (360) 352-2477 fax: (360) 352-0179 E-mail: admin@vectorengineeringinc.com

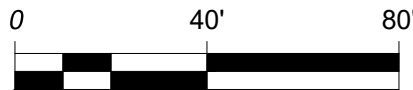
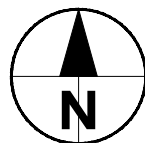
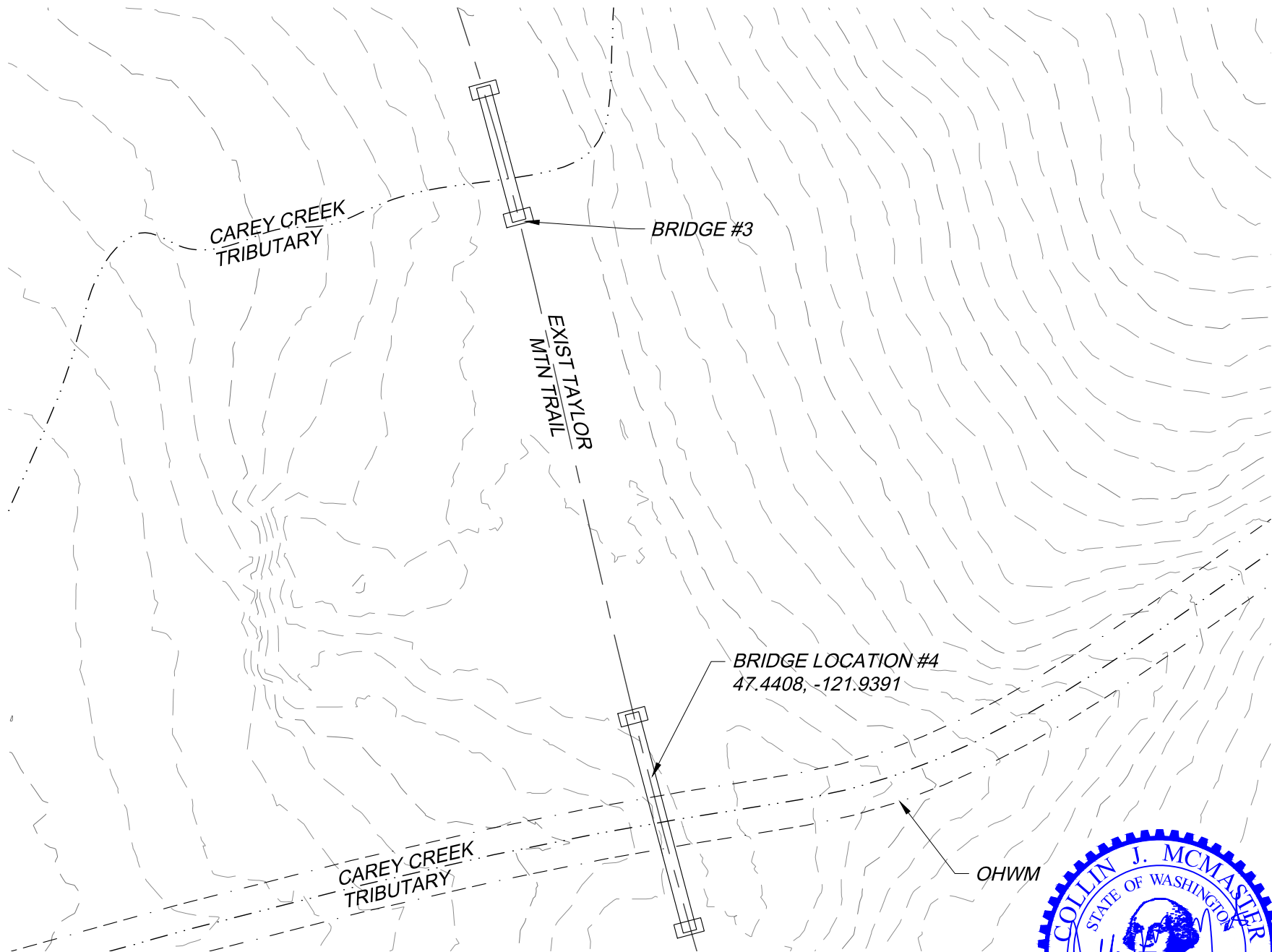
KING COUNTY  
EQUESTRIAN TRAIL BRIDGES

KING COUNTY  
BRIDGE LOCATION #4  
47.4408, -121.9391

JOB NO: 21-DNR  
DRAWN: CJM  
CHECKED: CJM  
DATE: 1/6/2023

C-1  
COVER

SHT 1 OF 4



A  
BR-1

**PLAN VIEW**  
SCALE: 1" = 40'



11/6/2023

KING COUNTY  
EQUESTRIAN TRAIL BRIDGES

KING COUNTY  
BRIDGE LOCATION #4  
47.4408, -121.9391

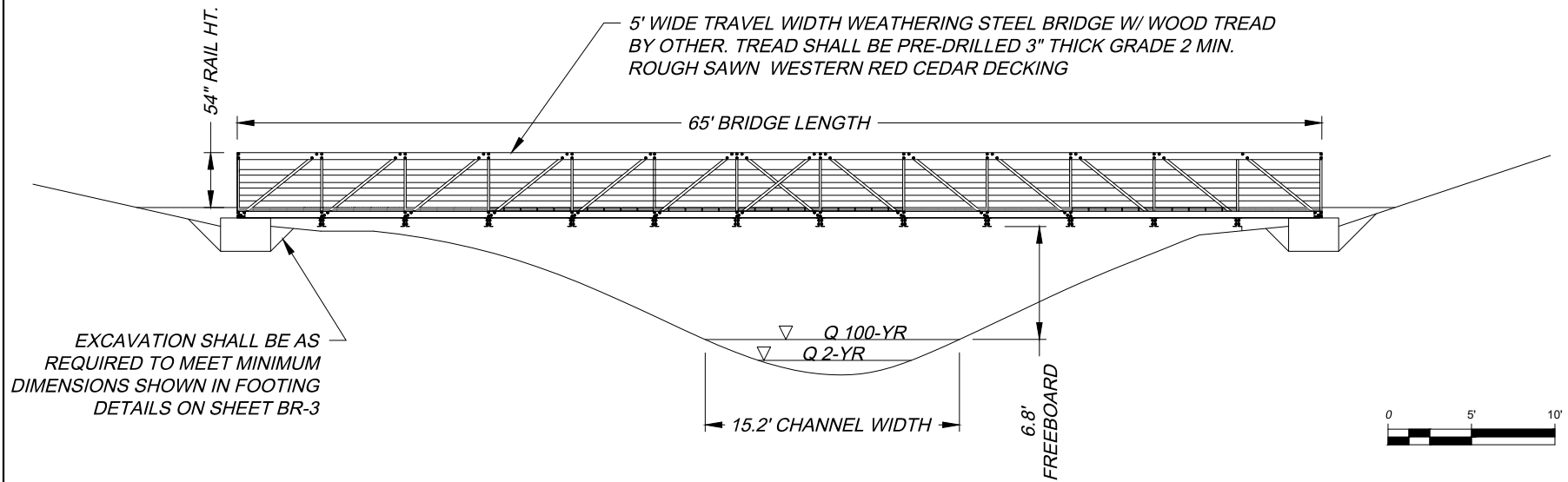
JOB NO: C/JM  
DRAWN: C/JM  
CHECKED: 21-DNR  
DATE:

**Vector**  
ENGINEERING INC.  
2724 Black Lake Boulevard SW Suite 202  
Turnwater, WA 98512  
ph: (360) 352-2477 fax: (360) 352-0179 E-mail: admin@vectorengineeringinc.com

**BR-1**  
PLAN

SHT 2 OF 4





#### GENERAL NOTES:

- BRIDGES MAY BE CONSTRUCTED AT UP TO 2% LONGITUDINAL GRADE. BEARINGS SHALL BE SET LEVEL TRANSVERSELY AND TO MATCH GRADE LONGITUDINALLY.
- ALL FOUNDATION MATERIALS AND WORK SHALL BE IN ACCORD AND CONFORMANCE WITH THE WSDOT STANDARD SPECIFICATIONS FOR ROAD, BRIDGE, AND MUNICIPAL CONSTRUCTION, 2022 EDITION, ENGLISH UNITS.
- BRIDGE FOUNDATION DESIGN IS IN ACCORD WITH CURRENT AMERICAN CONCRETE INSTITUTE (ACI) 318 MANUAL, AND AN ALLOWABLE SERVICE LEVEL SOIL BEARING PRESSURE OF 2,000 PSF IS ASSUMED AS MINIMUM.
- BEARINGS SHALL BE ELASTOMERIC AASHTO GRADE BEARING PADS OF THE SIZE AND THICKNESS REQUIRED BY SUPERSTRUCTURE ENGINEER.
- APPROACH FILLS SHOWN ARE DEMONSTRATION ONLY. ACTUAL FILL HEIGHTS TBD IN-FIELD. MINIMUM FILL DIMENSIONS SHALL BE PER DETAILS.

#### CONCRETE

- STRUCTURAL CONCRETE WORK SHALL BE IN ACCORD WITH SECTIONS 1903 THROUGH 1907 OF THE IBC AND ACI 318-19, "STANDARD SPECIFICATION FOR STRUCTURAL CONCRETE".
- CONCRETE SHALL HAVE A MINIMUM SPECIFIED COMPRESSIVE STRENGTH (F'C) OF 3000 PSI AT 28 DAYS.
- DEFORMED STEEL REINFORCING BARS SHALL BE: ASTM A 615, A 616, OR A 706, GRADE 60.
- MINIMUM CONCRETE COVER OF REINFORCING STEEL SHALL BE:  
CONCRETE EXPOSED TO WEATHER: 2"  
CONCRETE CAST AGAINST EARTH: 3"

#### EARTHWORK AND FOUNDATION PREPARATION

- IMPORTED STRUCTURAL FILL SHALL BE IN ACCORD WITH 2022 WSDOT STANDARD SPECIFICATIONS 4-02 AND 9-03.10 FOR "GRAVEL BASE."
- SITE SOILS MAY BE USED, AS APPROVED BY GEOTECHNICAL ENGINEER, FOR STRUCTURAL FILL AND LEVELING COURSES BASED ON THE FOLLOWING:
  - MATERIAL SHALL BE EXCAVATED FROM BELOW WOODY/ORGANIC LAYER TO SAND/GRAVEL LAYER - COBBLES LARGER THAN 2-1/2" SHALL BE REMOVED
  - MATERIAL SHALL BE PLACED IN LIFTS NO DEEPER THAN 6".
  - ADJUST MOISTURE CONTENT OF MATERIAL TO PRODUCE A FIRM-STABLE EMBANKMENT. SITE WATER MAY BE USED TO STABILIZE SOIL.
  - COMPACT EACH LIFT WITH NO LESS THAN 3 PASSES WITH A HAND OR VIBRATORY COMPACTOR.
  - FINAL STRUCTURAL FILL PLACEMENT AND COMPACTION SHALL PRODUCE A FIRM UNYIELDING BASE THAT MATCHES OR OUT-PERFORMS NATIVE SOILS IN THE SAME AREA.



1/6/2023

KING COUNTY  
EQUESTRIAN TRAIL BRIDGES

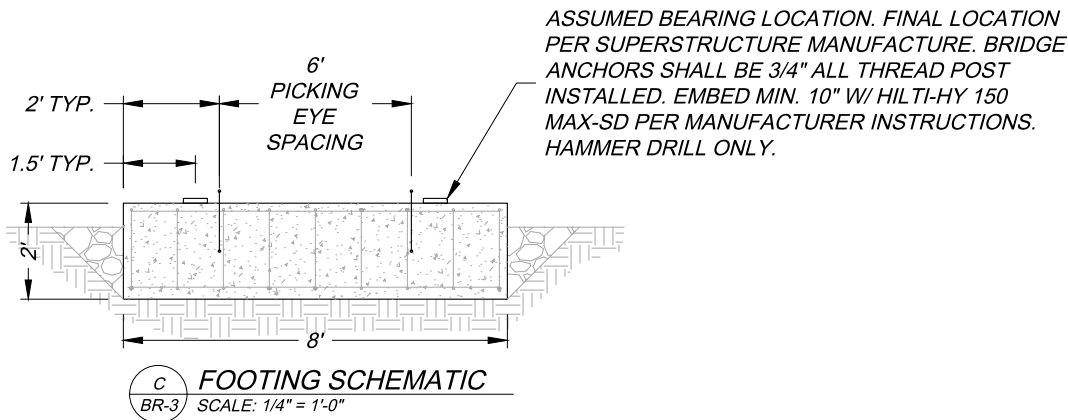
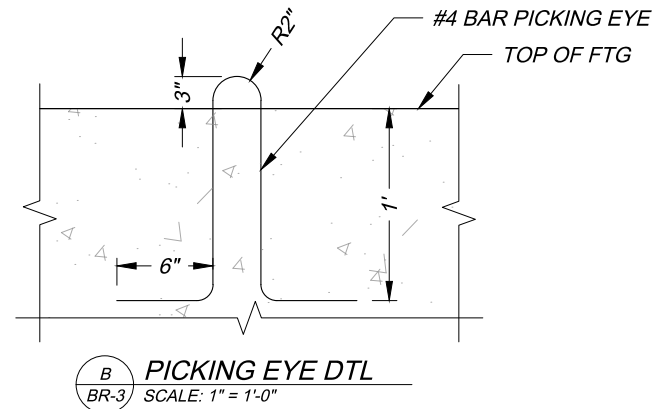
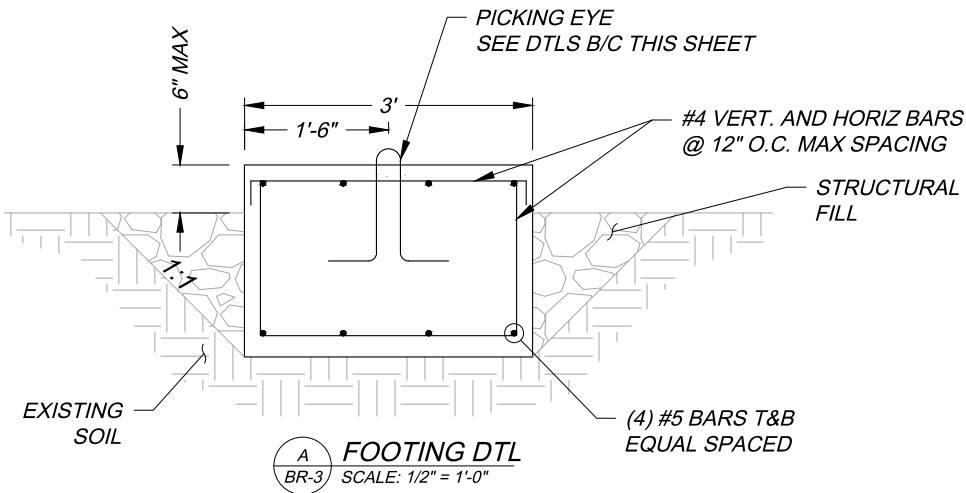
KING COUNTY  
BRIDGE LOCATION #4  
47.4408, -121.9391

JOB NO: 21-DNR  
DRAWN: CJM  
CHECKED: CJM  
DATE: 1/6/2023

**Vector**  
ENGINEERING INC.  
2724 Black Lake Boulevard SW, Suite 202  
Turnwater, WA 98512  
ph: (360) 352-2477 fax: (360) 352-0179 E-mail: admin@vectorengineeringinc.com

**BR-2**  
DETAILS &  
NOTES

SHT 3 OF 4



1/6/2023

KING COUNTY  
EQUESTRIAN TRAIL BRIDGES

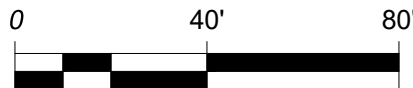
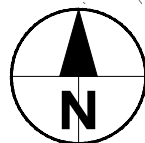
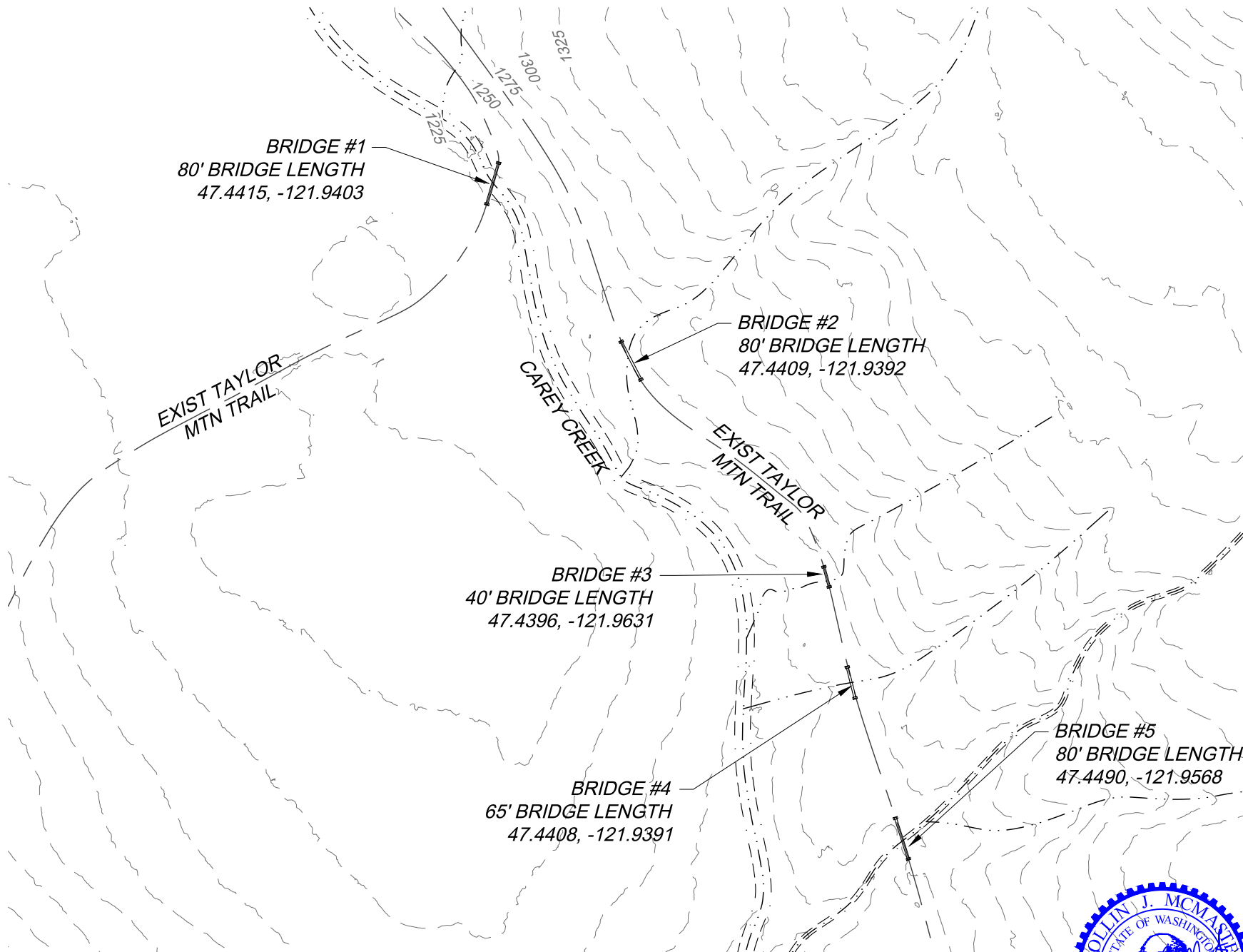
JOB NO: 21-DNR  
DRAWN: CJM  
CHECKED: CJM  
DATE: 1/6/2023

KING COUNTY  
BRIDGE LOCATION #4  
47.4408, -121.9391

**Vector**  
ENGINEERING INC.  
2724 Black Lake Boulevard SW Suite 202  
Turnwater, WA 98512  
ph: (360) 352-2477 fax: (360) 352-0179 E-mail: admin@vectorengineeringinc.com

**BR-3**  
DETAILS

SHT 4 OF 4



A  
C-1

## PLAN VIEW

SCALE: 1" = 250'

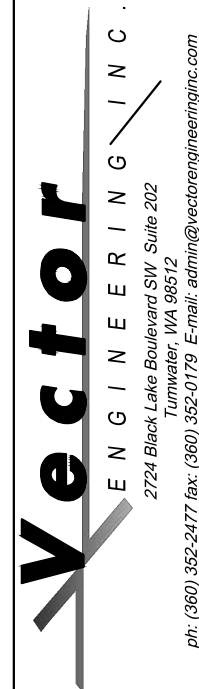


1/6/2023

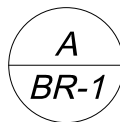
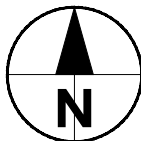
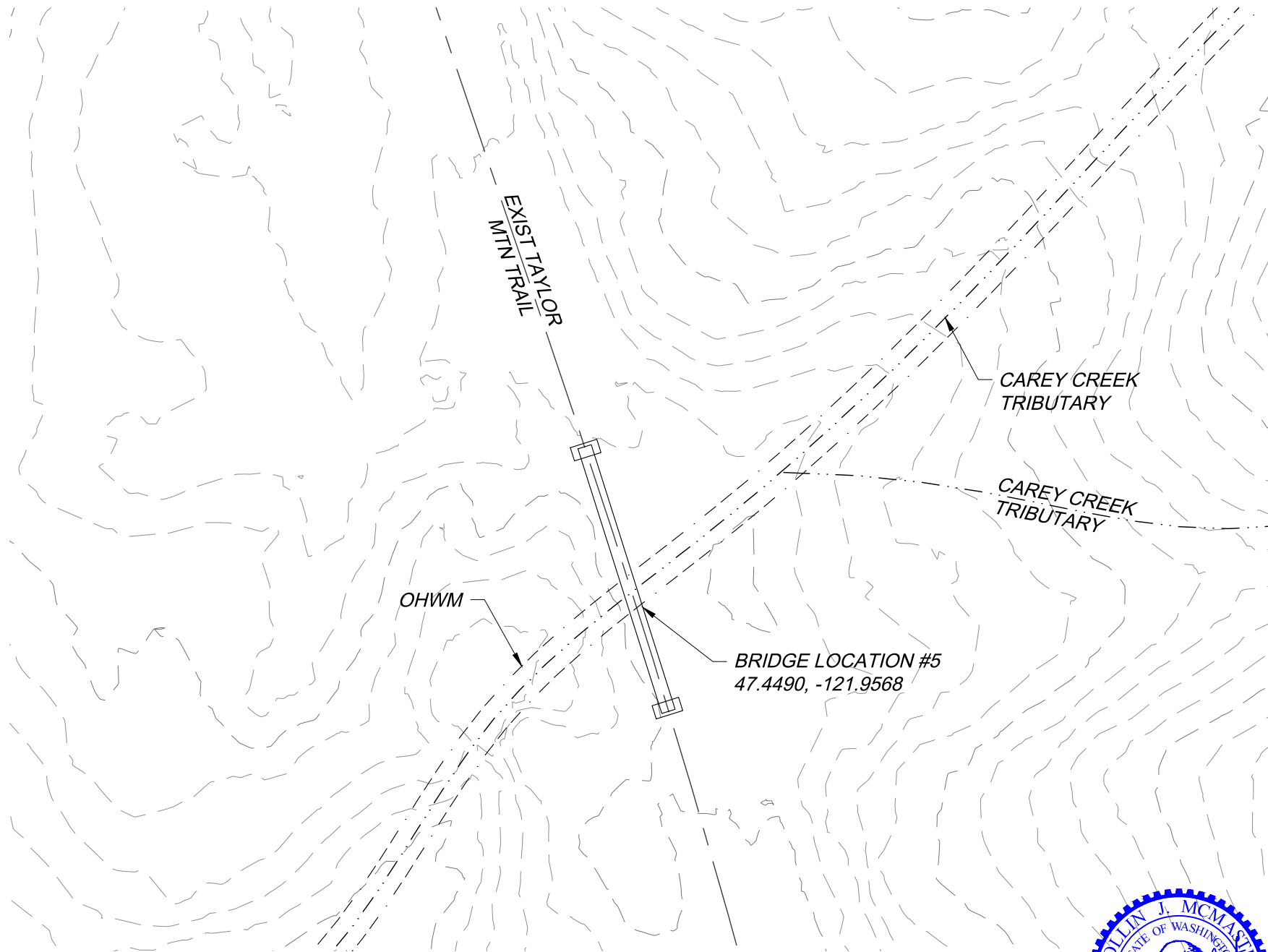
KING COUNTY  
EQUESTRIAN TRAIL BRIDGES

KING COUNTY  
BRIDGE LOCATION #5  
47.4490, -121.9568

JOB NO: 21-DNR  
DRAWN: CJM  
CHECKED: CJM  
DATE: 1/6/2023



C-1  
COVER



**PLAN VIEW**  
SCALE: 1" = 40'



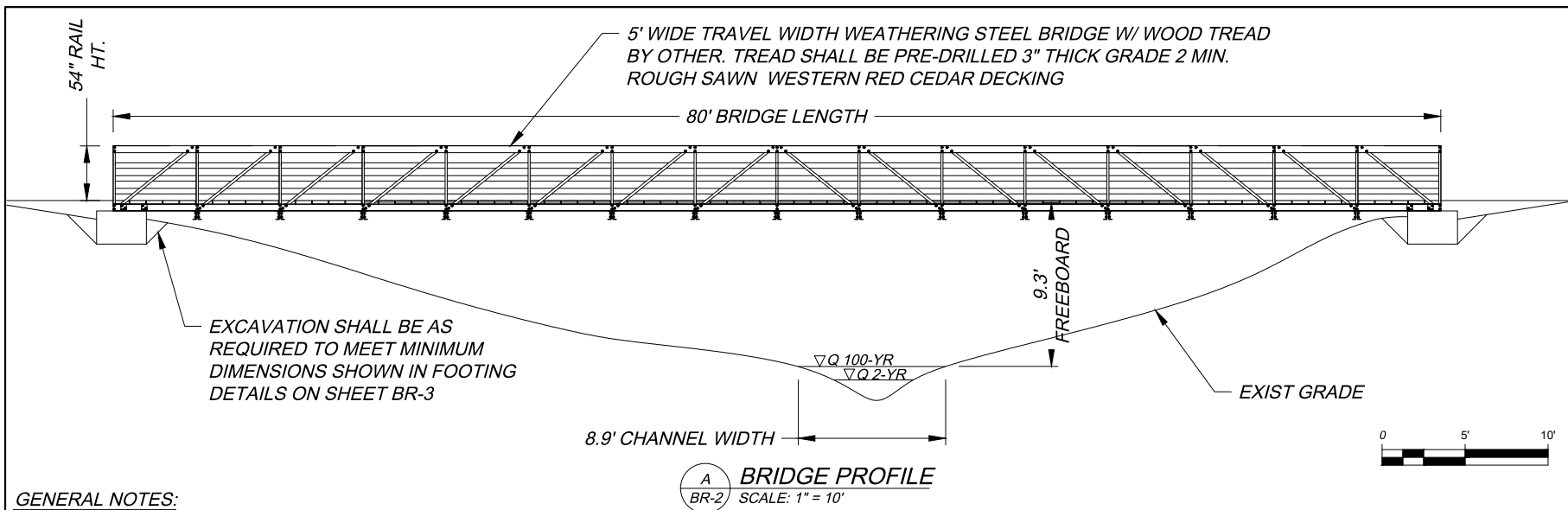
**Vector**  
ENGINEERING INC.  
2724 Black Lake Boulevard SW - Suite 202  
Tumwater, WA 98512  
ph: (360) 352-2477 fax: (360) 352-0179 E-mail: admin@vectorengineeringinc.com

KING COUNTY  
EQUESTRIAN TRAIL BRIDGES

KING COUNTY  
BRIDGE LOCATION #5  
47.4490, -121.9568

JOB NO: CJM  
DRAWN: CJM  
CHECKED: 21-DNR  
DATE:

**BR-1**  
PLAN



#### GENERAL NOTES:

- BRIDGES MAY BE CONSTRUCTED AT UP TO 2% LONGITUDINAL GRADE. BEARINGS SHALL BE SET LEVEL TRANSVERSELY AND TO MATCH GRADE LONGITUDINALLY.
- ALL FOUNDATION MATERIALS AND WORK SHALL BE IN ACCORD AND CONFORMANCE WITH THE WSDOT STANDARD SPECIFICATIONS FOR ROAD, BRIDGE, AND MUNICIPAL CONSTRUCTION, 2022 EDITION, ENGLISH UNITS.
- BRIDGE FOUNDATION DESIGN IS IN ACCORD WITH CURRENT AMERICAN CONCRETE INSTITUTE (ACI) 318 MANUAL, AND AN ALLOWABLE SERVICE LEVEL SOIL BEARING PRESSURE OF 2,000 PSF IS ASSUMED AS MINIMUM.
- BEARINGS SHALL BE ELASTOMERIC AASHTO GRADE BEARING PADS OF THE SIZE AND THICKNESS REQUIRED BY SUPERSTRUCTURE ENGINEER.
- APPROACH FILLS SHOWN ARE DEMONSTRATION ONLY. ACTUAL FILL HEIGHTS TBD IN-FIELD. MINIMUM FILL DIMENSIONS SHALL BE PER DETAILS.

#### CONCRETE

- STRUCTURAL CONCRETE WORK SHALL BE IN ACCORD WITH SECTIONS 1903 THROUGH 1907 OF THE IBC AND ACI 318-19, "STANDARD SPECIFICATION FOR STRUCTURAL CONCRETE".
- CONCRETE SHALL HAVE A MINIMUM SPECIFIED COMPRESSIVE STRENGTH (F'C) OF 3000 PSI AT 28 DAYS.
- DEFORMED STEEL REINFORCING BARS SHALL BE: ASTM A 615, A 616, OR A 706, GRADE 60.
- MINIMUM CONCRETE COVER OF REINFORCING STEEL SHALL BE:  
CONCRETE EXPOSED TO WEATHER: 2"  
CONCRETE CAST AGAINST EARTH: 3"

#### EARTHWORK AND FOUNDATION PREPARATION

- IMPORTED STRUCTURAL FILL SHALL BE IN ACCORD WITH 2022 WSDOT STANDARD SPECIFICATIONS 4-02 AND 9-03.10 FOR "GRAVEL BASE."
- SITE SOILS MAY BE USED, AS APPROVED BY GEOTECHNICAL ENGINEER, FOR STRUCTURAL FILL AND LEVELING COURSES BASED ON THE FOLLOWING:
  - MATERIAL SHALL BE EXCAVATED FROM BELOW WOODY/ORGANIC LAYER TO SAND/GRAVEL LAYER - COBBLES LARGER THAN 2-1/2" SHALL BE REMOVED
  - MATERIAL SHALL BE PLACED IN LIFTS NO DEEPER THAN 6".
  - ADJUST MOISTURE CONTENT OF MATERIAL TO PRODUCE A FIRM-STABLE EMBANKMENT. SITE WATER MAY BE USED TO STABILIZE SOIL.
  - COMPACT EACH LIFT WITH NO LESS THAN 3 PASSES WITH A HAND OR VIBRATORY COMPACTOR.
  - FINAL STRUCTURAL FILL PLACEMENT AND COMPACTION SHALL PRODUCE A FIRM UNYIELDING BASE THAT MATCHES OR OUT-PERFORMS NATIVE SOILS IN THE SAME AREA.



**Vector**  
ENGINEERING INC.  
2724 Black Lake Boulevard SW, Suite 202  
Tumwater, WA 98512  
ph: (360) 352-2477 fax: (360) 352-0179 E-mail: admin@vectorengineeringinc.com

**BR-2**  
DETAILS &  
NOTES

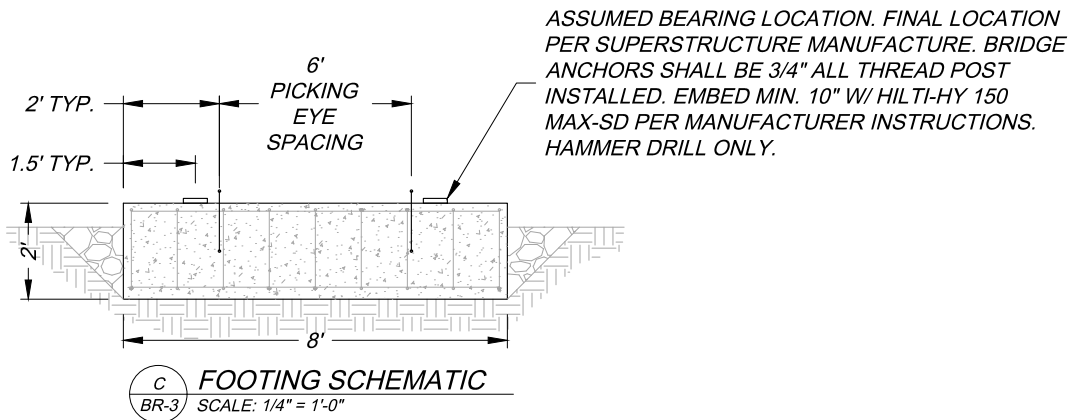
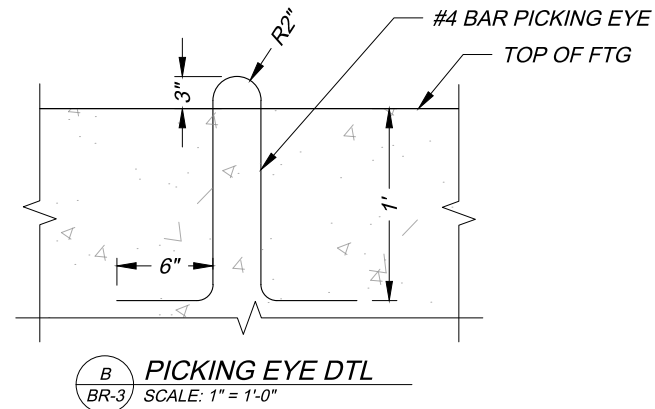
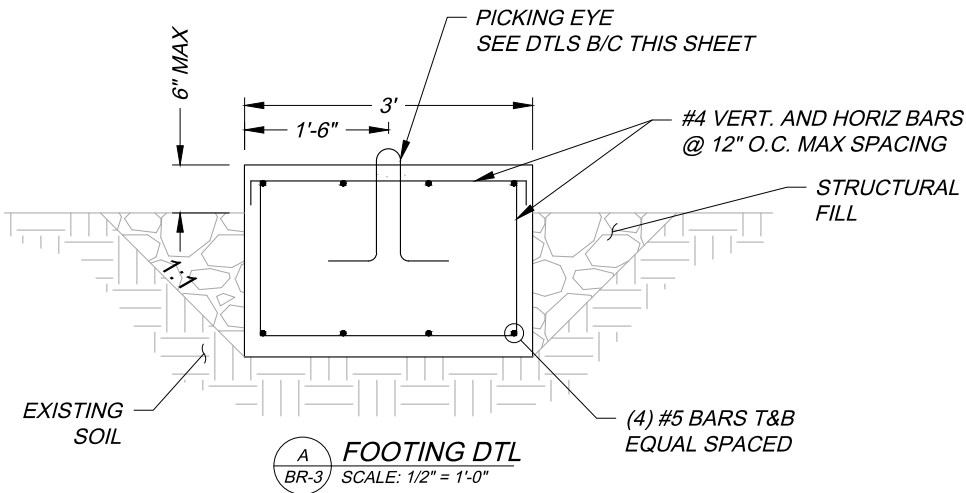
SHT 3 OF 4

KING COUNTY  
EQUESTRIAN TRAIL BRIDGES

KING COUNTY  
BRIDGE LOCATION #5  
47.4490, -121.9568

JOB NO: 21-DNR  
DRAWN: CJM  
CHECKED: CJM  
DATE: 1/6/2023





1/6/2023

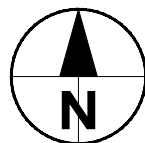
KING COUNTY  
EQUESTRIAN TRAIL BRIDGES

JOB NO: 21-DNR  
DRAWN: CJM  
CHECKED: CJM  
DATE: 1/6/2023

KING COUNTY  
BRIDGE LOCATION #5  
47.4490, -121.9568

**Vector**  
ENGINEERING INC.  
2724 Black Lake Boulevard SW Suite 202  
Turnwater, WA 98512  
ph: (360) 352-2477 fax: (360) 352-0179 E-mail: admin@vectorengineeringinc.com

**BR-3**  
DETAILS



A  
C-1

## PLAN VIEW

SCALE: 1" = 250'



1/6/2023

BRIDGE #3  
40' BRIDGE LENGTH  
47.4396, -121.9631

BRIDGE #4  
65' BRIDGE LENGTH  
47.4408, -121.9391

BRIDGE #5  
80' BRIDGE LENGTH  
47.4490, -121.9568

BRIDGE LOCATION #6  
40' BRIDGE LENGTH  
47.4396, -121.9631

EXIST TAYLOR  
MTN TRAIL

CAREY CREEK

KING COUNTY  
EQUESTRIAN TRAIL BRIDGES

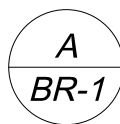
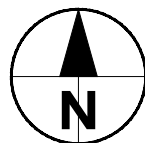
KING COUNTY  
BRIDGE LOCATION #6  
47.4396, -121.9631

JOB NO: 21-DNR  
DRAWN: CJM  
CHECKED: CJM  
DATE: 1/6/2023

**Vector**  
ENGINEERING INC.  
2724 Black Lake Boulevard SW Suite 202  
Turnwater, WA 98512  
ph: (360) 352-2477 fax: (360) 352-0179 E-mail: admin@vectorengineeringinc.com

C-1  
COVER

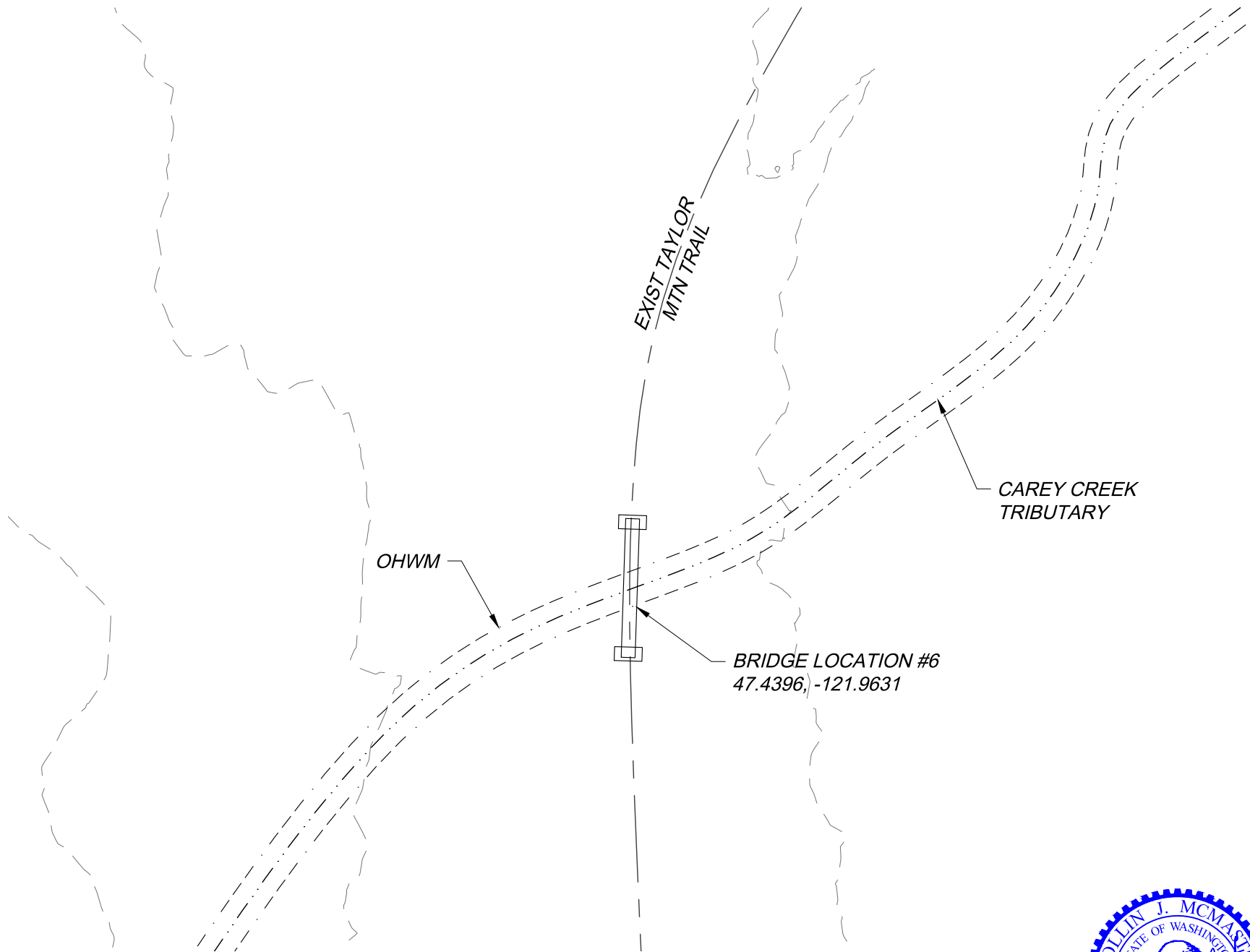
SHT 1 OF 4



**PLAN VIEW**  
SCALE: 1" = 40'



1/6/2023



**Vector**  
ENGINEERING INC.  
2724 Black Lake Boulevard SW, Suite 202  
Tumwater, WA 98512  
ph: (360) 352-2477 fax: (360) 352-0179 E-mail: admin@vectorengineeringinc.com

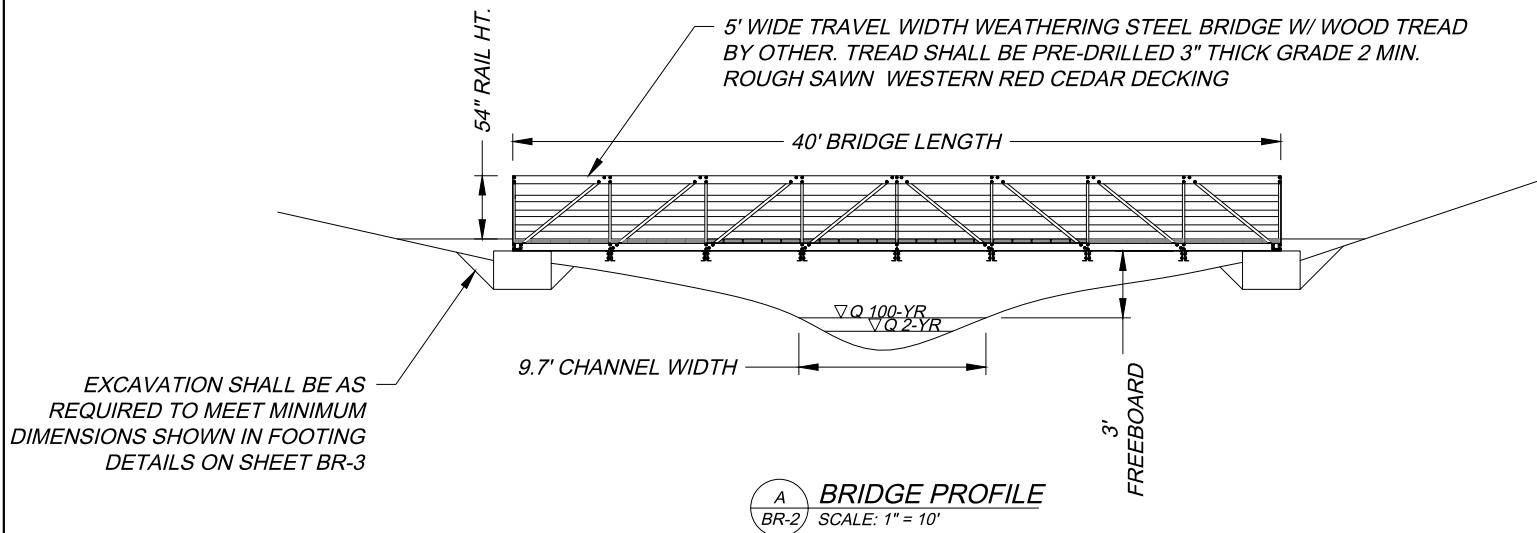
**BR-1**  
PLAN

SHT 2 OF 4

KING COUNTY  
EQUESTRIAN TRAIL BRIDGES

KING COUNTY  
BRIDGE LOCATION #6  
47.4396, -121.9631

JOB NO:	CJM
DRAWN:	CJM
CHECKED:	21-DNR
DATE:	



#### GENERAL NOTES:

- BRIDGES MAY BE CONSTRUCTED AT UP TO 2% LONGITUDINAL GRADE. BEARINGS SHALL BE SET LEVEL TRANSVERSELY AND TO MATCH GRADE LONGITUDINALLY.
- ALL FOUNDATION MATERIALS AND WORK SHALL BE IN ACCORD AND CONFORMANCE WITH THE WSDOT STANDARD SPECIFICATIONS FOR ROAD, BRIDGE, AND MUNICIPAL CONSTRUCTION, 2022 EDITION, ENGLISH UNITS.
- BRIDGE FOUNDATION DESIGN IS IN ACCORD WITH CURRENT AMERICAN CONCRETE INSTITUTE (ACI) 318 MANUAL, AND AN ALLOWABLE SERVICE LEVEL SOIL BEARING PRESSURE OF 2,000 PSF IS ASSUMED AS MINIMUM.
- BEARINGS SHALL BE ELASTOMERIC AASHTO GRADE BEARING PADS OF THE SIZE AND THICKNESS REQUIRED BY SUPERSTRUCTURE ENGINEER.
- APPROACH FILLS SHOWN ARE DEMONSTRATION ONLY. ACTUAL FILL HEIGHTS TBD IN-FIELD. MINIMUM FILL DIMENSIONS SHALL BE PER DETAILS.

#### CONCRETE

- STRUCTURAL CONCRETE WORK SHALL BE IN ACCORD WITH SECTIONS 1903 THROUGH 1907 OF THE IBC AND ACI 318-19, "STANDARD SPECIFICATION FOR STRUCTURAL CONCRETE".
- CONCRETE SHALL HAVE A MINIMUM SPECIFIED COMPRESSIVE STRENGTH (F'C) OF 3000 PSI AT 28 DAYS.
- DEFORMED STEEL REINFORCING BARS SHALL BE: ASTM A 615, A 616, OR A 706, GRADE 60.
- MINIMUM CONCRETE COVER OF REINFORCING STEEL SHALL BE:  
CONCRETE EXPOSED TO WEATHER: 2"  
CONCRETE CAST AGAINST EARTH: 3"

#### EARTHWORK AND FOUNDATION PREPARATION

- IMPORTED STRUCTURAL FILL SHALL BE IN ACCORD WITH 2022 WSDOT STANDARD SPECIFICATIONS 4-02 AND 9-03.10 FOR "GRAVEL BASE."
- SITE SOILS MAY BE USED, AS APPROVED BY GEOTECHNICAL ENGINEER, FOR STRUCTURAL FILL AND LEVELING COURSES BASED ON THE FOLLOWING:
  - MATERIAL SHALL BE EXCAVATED FROM BELOW WOODY/ORGANIC LAYER TO SAND/GRAVEL LAYER - COBBLES LARGER THAN 2-1/2" SHALL BE REMOVED
  - MATERIAL SHALL BE PLACED IN LIFTS NO DEEPER THAN 6".
  - ADJUST MOISTURE CONTENT OF MATERIAL TO PRODUCE A FIRM-STABLE EMBANKMENT. SITE WATER MAY BE USED TO STABILIZE SOIL.
  - COMPACT EACH LIFT WITH NO LESS THAN 3 PASSES WITH A HAND OR VIBRATORY COMPACTOR.
  - FINAL STRUCTURAL FILL PLACEMENT AND COMPACTION SHALL PRODUCE A FIRM UNYIELDING BASE THAT MATCHES OR OUT-PERFORMS NATIVE SOILS IN THE SAME AREA.



1/6/2023

KING COUNTY  
EQUESTRIAN TRAIL BRIDGES

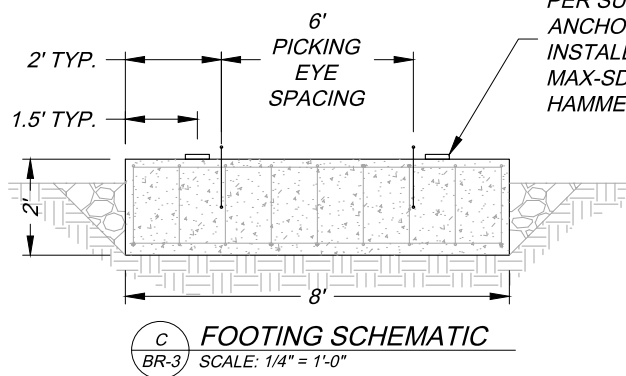
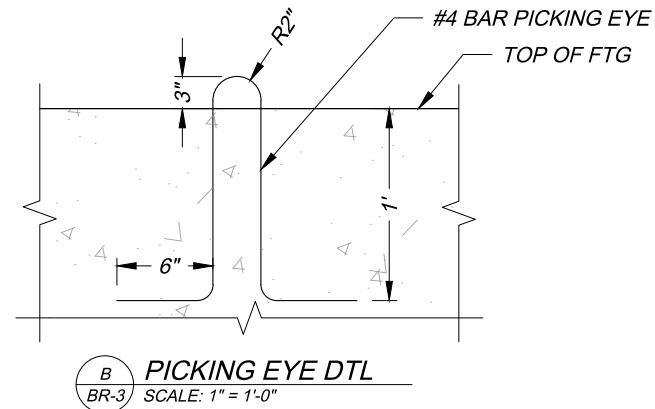
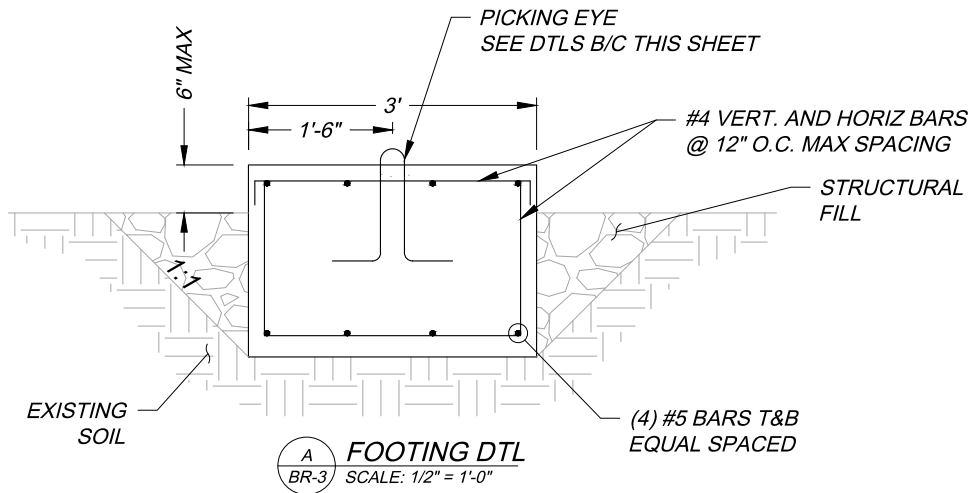
KING COUNTY  
BRIDGE LOCATION #6  
47.4396, -121.9631

JOB NO: 21-DNR  
DRAWN: CJM  
CHECKED: CJM  
DATE: 1/6/2023

**Vector**  
ENGINEERING INC.  
2724 Black Lake Boulevard SW, Suite 202  
Turnwater, WA 98512  
ph: (360) 352-2477 fax: (360) 352-0179 E-mail: admin@vectorengineeringinc.com

**BR-2**  
DETAILS &  
NOTES

SHT 3 OF 4



ASSUMED BEARING LOCATION. FINAL LOCATION  
PER SUPERSTRUCTURE MANUFACTURE. BRIDGE  
ANCHORS SHALL BE 3/4" ALL THREAD POST  
INSTALLED. EMBED MIN. 10" W/ HILTI-HY 150  
MAX-SD PER MANUFACTURER INSTRUCTIONS.  
HAMMER DRILL ONLY.



1/6/2023

KING COUNTY  
EQUESTRIAN TRAIL BRIDGES

KING COUNTY  
BRIDGE LOCATION #6  
47.4396, -121.9631

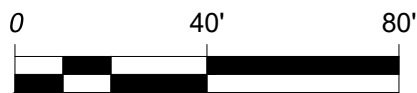
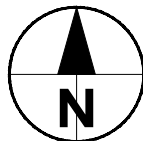
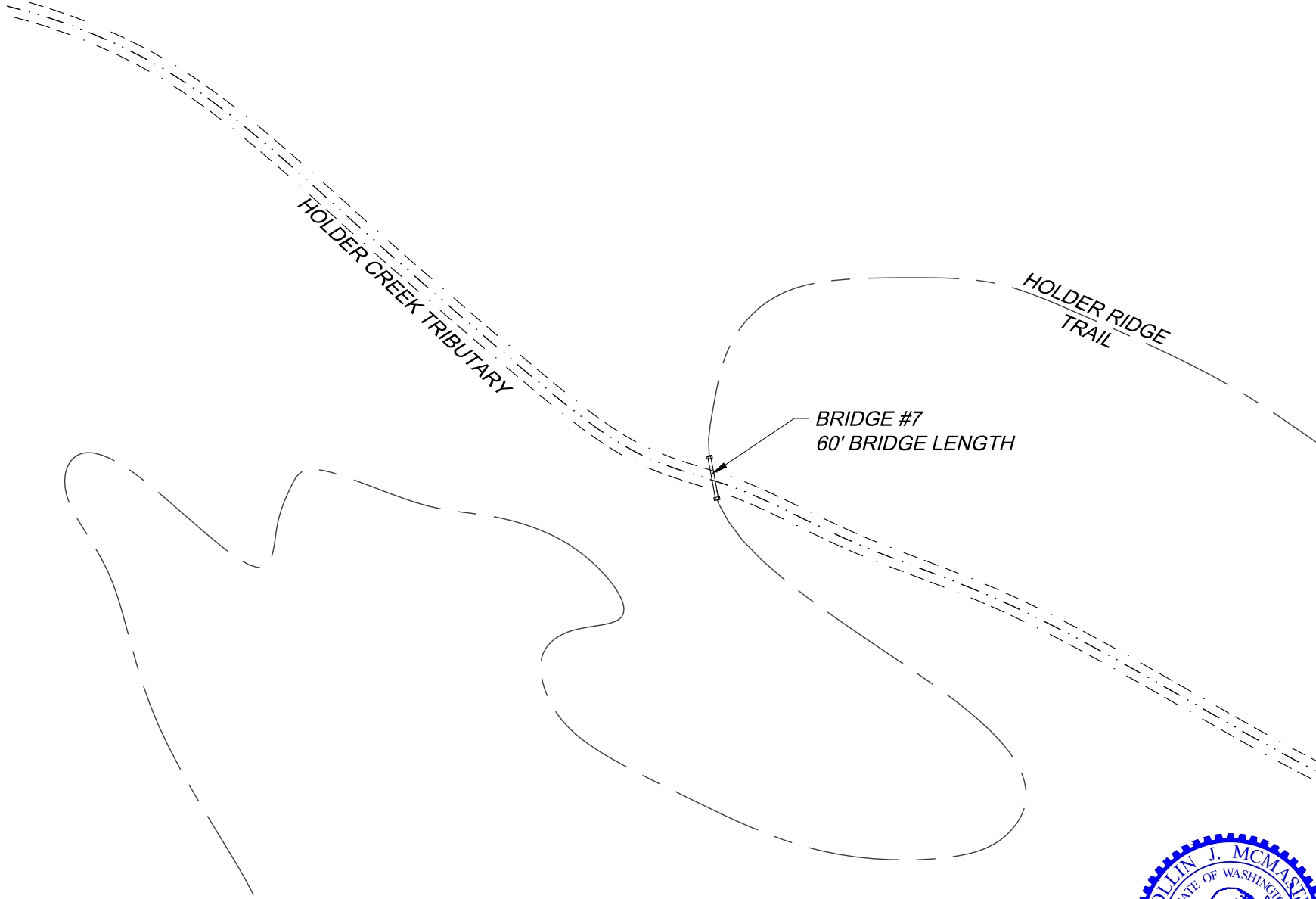
JOB NO: 21-DNR  
DRAWN: CJM  
CHECKED: CJM  
DATE: 1/6/2023

**Vector**  
ENGINEERING INC.  
2724 Black Lake Boulevard SW Suite 202  
Turnwater, WA 98512  
ph: (360) 352-2477 fax: (360) 352-0179 E-mail: admin@vectorengineeringinc.com

**BR-3**  
DETAILS

SHT 4 OF 4





A  
C-1

**PLAN VIEW**  
SCALE: 1" = 250'



6/16/2023

KING COUNTY  
BRIDGE LOCATION #7

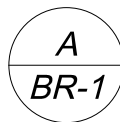
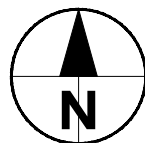
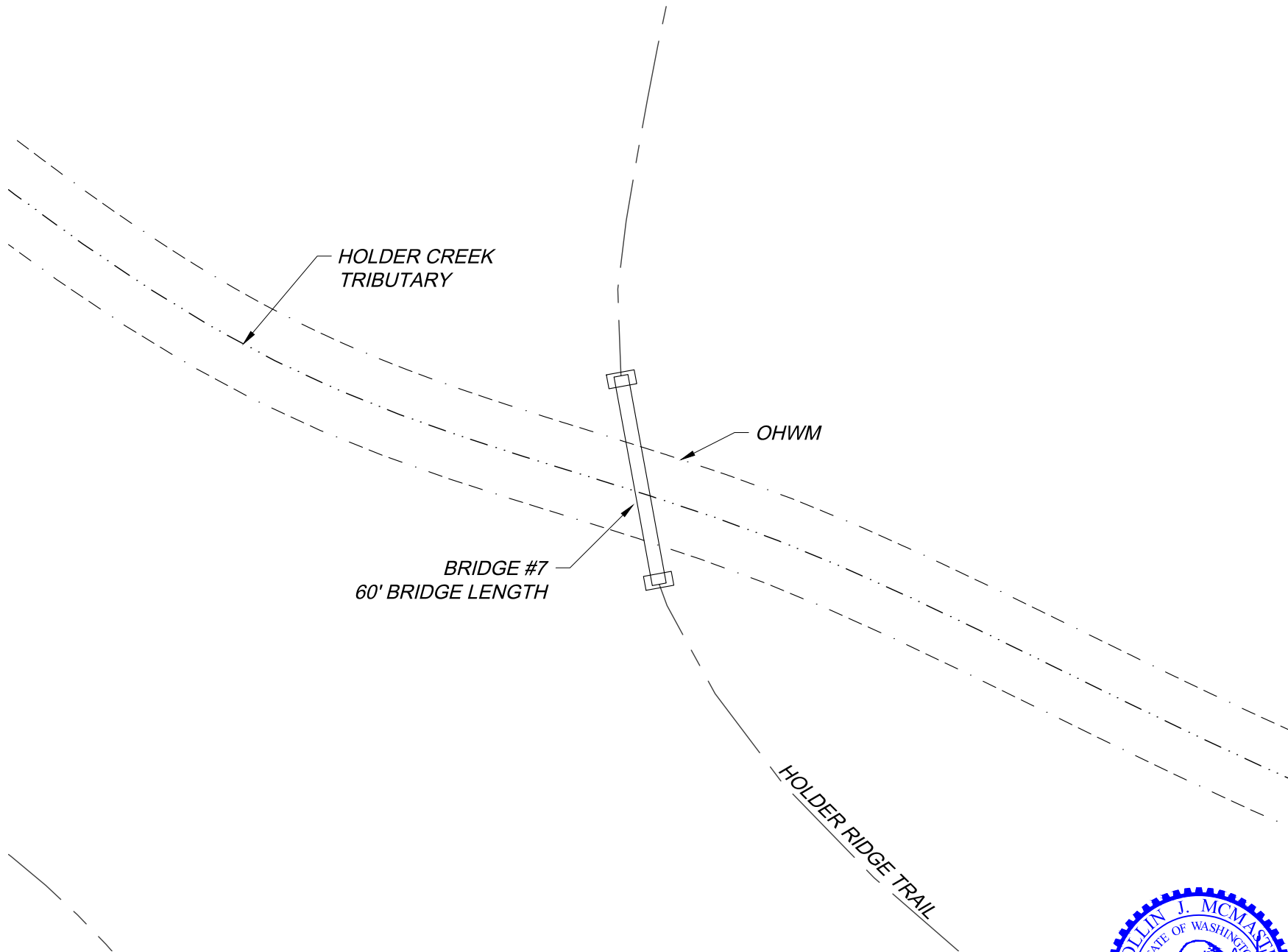
KING COUNTY  
EQUESTRIAN TRAIL BRIDGES  
TAYLOR MOUNTAIN FOREST

JOB NO: CJM  
DRAWN: CJM  
CHECKED: CJM  
DATE: 6/16/2023

**Vector**  
ENGINEERING INC.  
2724 Black Lake Boulevard SW, Suite 202  
Turnwater, WA 98512  
ph: (360) 352-2477 fax: (360) 352-0179 E-mail: admin@vectorengineeringinc.com

**C-1**  
COVER

SHT 1 OF 4



**PLAN VIEW**  
SCALE: 1" = 40'



6/16/2023

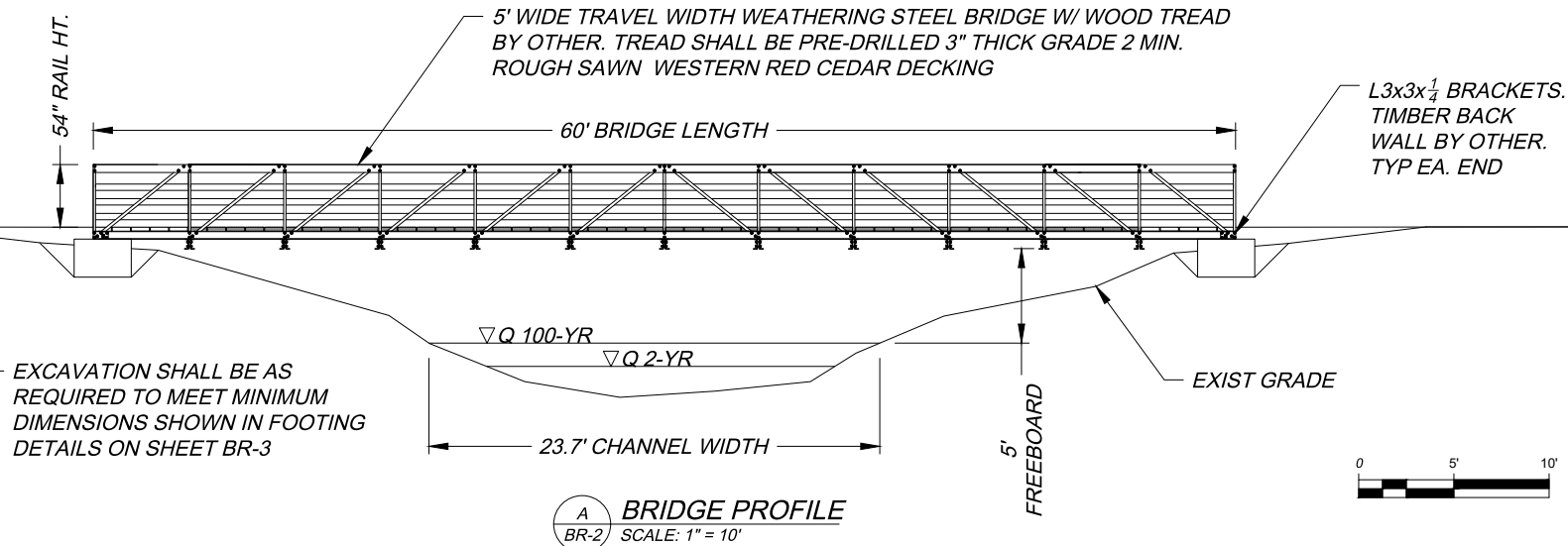
KING COUNTY  
BRIDGE LOCATION #7

KING COUNTY  
EQUESTRIAN TRAIL BRIDGES  
TAYLOR MOUNTAIN FOREST

JOB NO: CJM  
DRAWN: CJM  
CHECKED: CJM  
DATE: 6/16/2023

**Vector**  
ENGINEERING INC.  
2724 Black Lake Boulevard SW Suite 202  
Turnwater, WA 98512  
ph: (360) 352-2477 fax: (360) 352-0179 E-mail: admin@vectorengineeringinc.com

**BR-1**  
PLAN



#### GENERAL NOTES:

- BRIDGES MAY BE CONSTRUCTED AT UP TO 2% LONGITUDINAL GRADE. BEARINGS SHALL BE SET LEVEL TRANSVERSELY AND TO MATCH GRADE LONGITUDINALLY.
- ALL FOUNDATION MATERIALS AND WORK SHALL BE IN ACCORD AND CONFORMANCE WITH THE WSDOT STANDARD SPECIFICATIONS FOR ROAD, BRIDGE, AND MUNICIPAL CONSTRUCTION, 2022 EDITION, ENGLISH UNITS.
- BRIDGE FOUNDATION DESIGN IS IN ACCORD WITH CURRENT AMERICAN CONCRETE INSTITUTE (ACI) 318 MANUAL, AND AN ALLOWABLE SERVICE LEVEL SOIL BEARING PRESSURE OF 2,000 PSF IS ASSUMED AS MINIMUM.
- BEARINGS SHALL BE ELASTOMERIC AASHTO GRADE BEARING PADS OF THE SIZE AND THICKNESS REQUIRED BY SUPERSTRUCTURE ENGINEER.
- APPROACH FILLS SHOWN ARE DEMONSTRATION ONLY. ACTUAL FILL HEIGHTS TBD IN-FIELD. MINIMUM FILL DIMENSIONS SHALL BE PER DETAILS.

#### CONCRETE

- STRUCTURAL CONCRETE WORK SHALL BE IN ACCORD WITH SECTIONS 1903 THROUGH 1907 OF THE IBC AND ACI 318-19, "STANDARD SPECIFICATION FOR STRUCTURAL CONCRETE".
- CONCRETE SHALL HAVE A MINIMUM SPECIFIED COMPRESSIVE STRENGTH (F'C) OF 3000 PSI AT 28 DAYS.
- DEFORMED STEEL REINFORCING BARS SHALL BE: ASTM A 615, A 616, OR A 706, GRADE 60.
- MINIMUM CONCRETE COVER OF REINFORCING STEEL SHALL BE:  
CONCRETE EXPOSED TO WEATHER: 2"  
CONCRETE CAST AGAINST EARTH: 3"

#### EARTHWORK AND FOUNDATION PREPARATION

- IMPORTED STRUCTURAL FILL SHALL BE IN ACCORD WITH 2022 WSDOT STANDARD SPECIFICATIONS 4-02 AND 9-03.10 FOR "GRAVEL BASE."
- SITE SOILS MAY BE USED, AS APPROVED BY GEOTECHNICAL ENGINEER, FOR STRUCTURAL FILL AND LEVELING COURSES BASED ON THE FOLLOWING:
  - MATERIAL SHALL BE EXCAVATED FROM BELOW WOODY/ORGANIC LAYER TO SAND/GRAVEL LAYER - COBBLES LARGER THAN 2-1/2" SHALL BE REMOVED
  - MATERIAL SHALL BE PLACED IN LIFTS NO DEEPER THAN 6".
  - ADJUST MOISTURE CONTENT OF MATERIAL TO PRODUCE A FIRM-STABLE EMBANKMENT. SITE WATER MAY BE USED TO STABILIZE SOIL.
  - COMPACT EACH LIFT WITH NO LESS THAN 3 PASSES WITH A HAND OR VIBRATORY COMPACTOR.
  - FINAL STRUCTURAL FILL PLACEMENT AND COMPACTION SHALL PRODUCE A FIRM UNYIELDING BASE THAT MATCHES OR OUT-PERFORMS NATIVE SOILS IN THE SAME AREA.



6/16/2023

KING COUNTY  
BRIDGE LOCATION #7

KING COUNTY  
EQUESTRIAN TRAIL BRIDGES  
TAYLOR MOUNTAIN FOREST

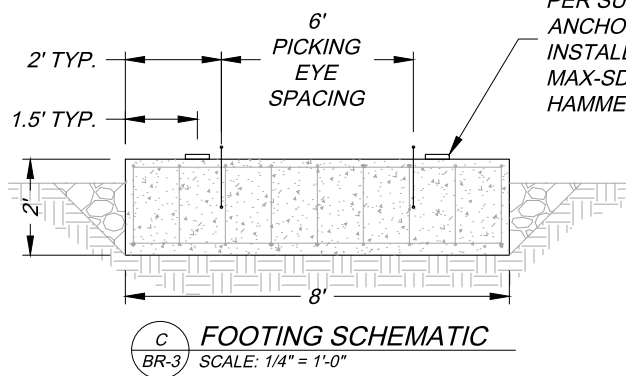
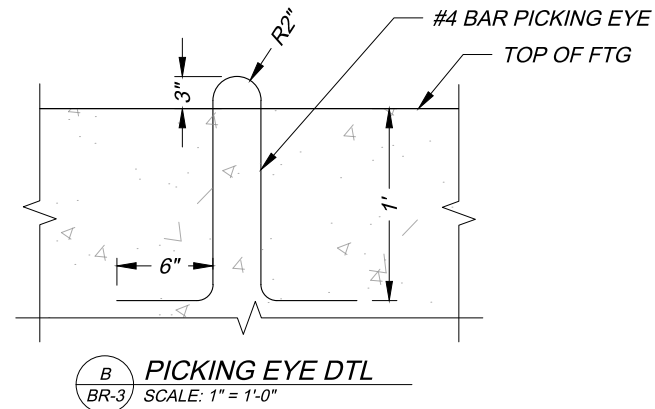
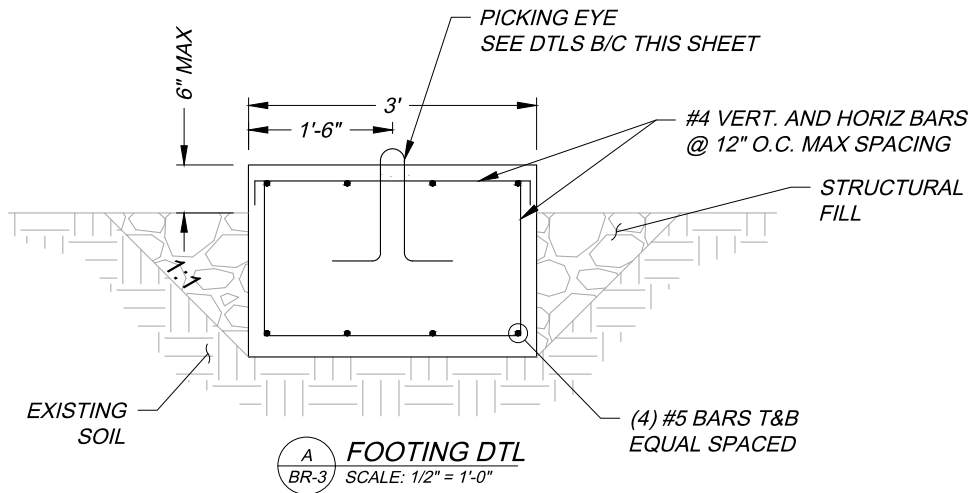
JOB NO: C/JM  
DRAWN: C/JM  
CHECKED: C/JM  
DATE: 6/16/2023

**Vector**  
ENGINEERING INC.  
2724 Black Lake Boulevard SW, Suite 202  
Turnwater, WA 98512  
ph: (360) 352-2477 fax: (360) 352-0179 E-mail: admin@vectorengineeringinc.com

**BR-2**  
DETAILS &  
NOTES

SHT 3 OF 4





ASSUMED BEARING LOCATION. FINAL LOCATION  
PER SUPERSTRUCTURE MANUFACTURE. BRIDGE  
ANCHORS SHALL BE 3/4" ALL THREAD POST  
INSTALLED. EMBED MIN. 10" W/ HILTI-HY 150  
MAX-SD PER MANUFACTURER INSTRUCTIONS.  
HAMMER DRILL ONLY.



6/16/2023

KING COUNTY  
BRIDGE LOCATION #7

KING COUNTY  
EQUESTRIAN TRAIL BRIDGES  
TAYLOR MOUNTAIN FOREST

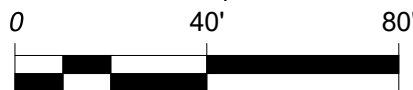
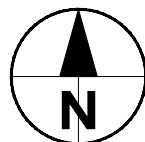
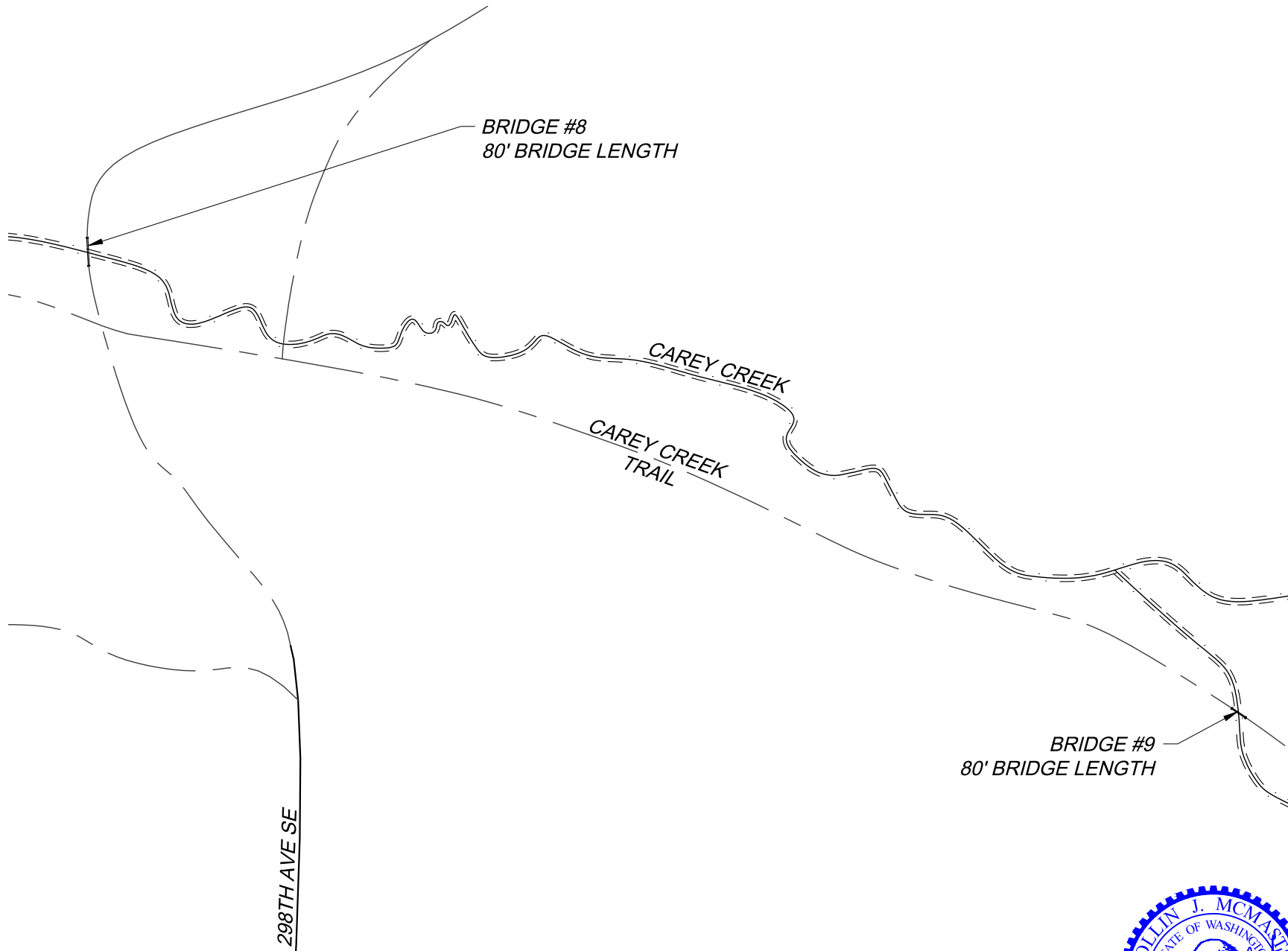
JOB NO: C/JM  
DRAWN: C/JM  
CHECKED: C/JM  
DATE: 6/16/2023

**Vector**  
ENGINEERING INC.

2724 Black Lake Boulevard SW Suite 202  
Turnwater, WA 98512  
ph: (360) 352-2477 fax: (360) 352-0179 E-mail: admin@vectorengineeringinc.com

**BR-3**  
DETAILS

SHT 4 OF 4



A  
C-1

# PLAN VIEW

SCALE: 1" = 250'



6/16/23

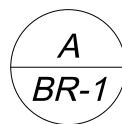
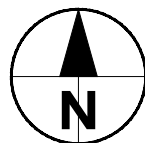
**Vector**  
ENGINEERING INC.  
2724 Black Lake Boulevard SW, Suite 202  
Tumwater, WA 98512  
ph: (360) 352-2477 fax: (360) 352-0179 E-mail: admin@vectorengineeringinc.com

CAREY CREEK 80'  
EQUESTRIAN TRAIL BRIDGE

KING COUNTY  
BRIDGE LOCATION #8  
TAYLOR MOUNTAIN FOREST

JOB NO: CJM  
DRAWN: CJM  
CHECKED: CJM  
DATE: 6/16/23

C-1  
COVER



**PLAN VIEW**  
SCALE: 1" = 40'



6/16/23

MT BEAVER TRAIL

BRIDGE #8  
80' BRIDGE LENGTH

OHWM

CAREY CREEK  
TRIBUTARY

**Vector**  
ENGINEERING INC.  
2724 Black Lake Boulevard SW Suite 202  
Tumwater, WA 98512  
ph: (360) 352-2477 fax: (360) 352-0179 E-mail: admin@vectorengineeringinc.com

**BR-1**  
PLAN

SHT 2 OF 4

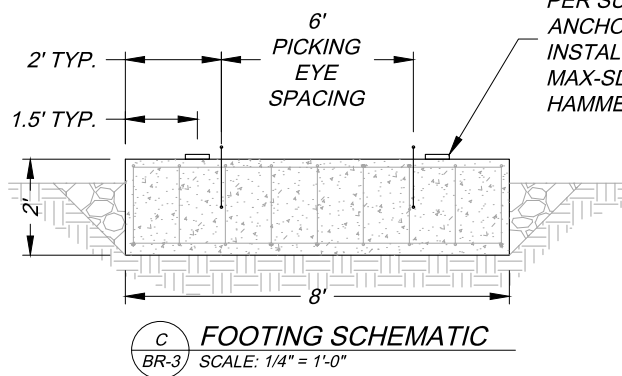
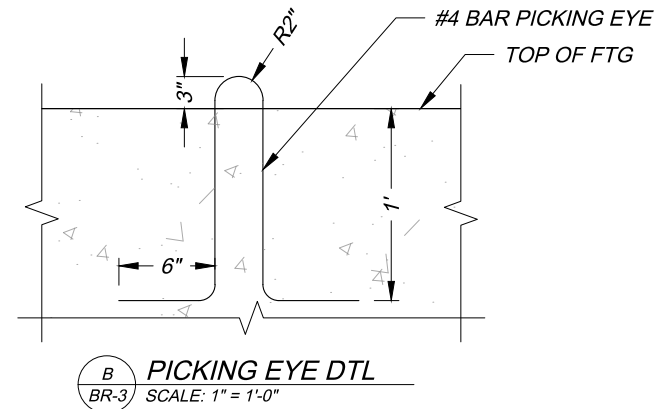
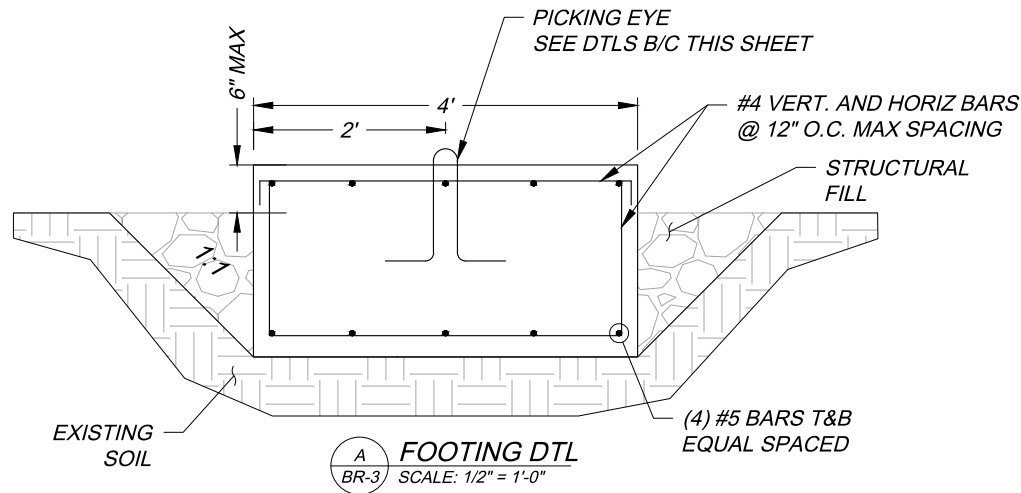
CAREY CREEK 80'  
EQUESTRIAN TRAIL BRIDGE

KING COUNTY  
BRIDGE LOCATION #8  
TAYLOR MOUNTAIN FOREST

JOB NO:	CJM
DRAWN:	CJM
CHECKED:	CJM
DATE:	6/16/23







ASSUMED BEARING LOCATION. FINAL LOCATION  
PER SUPERSTRUCTURE MANUFACTURE. BRIDGE  
ANCHORS SHALL BE 3/4" ALL THREAD POST  
INSTALLED. EMBED MIN. 10" W/ HILTI-HY 150  
MAX-SD PER MANUFACTURER INSTRUCTIONS.  
HAMMER DRILL ONLY.



6/16/23

CAREY CREEK 80'  
EQUESTRIAN TRAIL BRIDGE

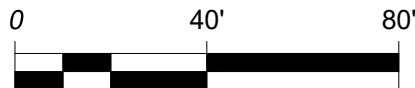
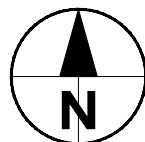
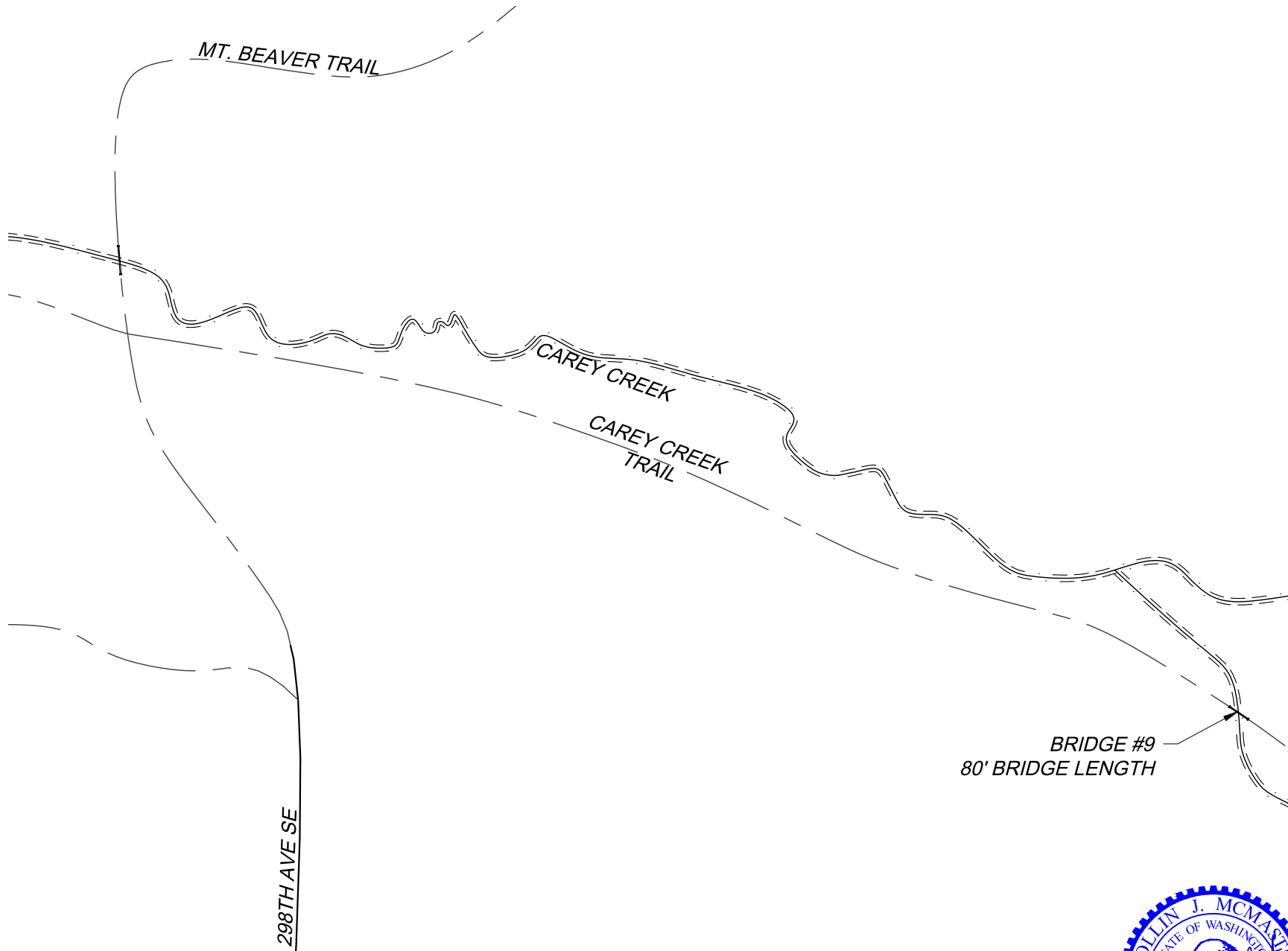
KING COUNTY  
BRIDGE LOCATION #8  
TAYLOR MOUNTAIN FOREST

JOB NO: CJM  
DRAWN: CJM  
CHECKED: CJM  
DATE: 6/16/23

**Vector**  
ENGINEERING INC.  
2724 Black Lake Boulevard SW Suite 202  
Turnwater, WA 98512  
ph: (360) 352-2477 fax: (360) 352-0179 E-mail: admin@vectorengineeringinc.com

**BR-3**  
DETAILS

SHT 4 OF 4



A  
C-1

**PLAN VIEW**

SCALE: 1" = 250'



6/16/23

**Vector**  
ENGINEERING INC.  
2724 Black Lake Boulevard SW, Suite 202  
Turnwater, WA 98512  
ph: (360) 352-2477 fax: (360) 352-0179 E-mail: admin@vectorengineeringinc.com

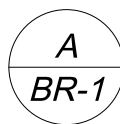
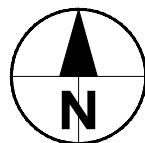
CAREY CREEK 80'  
EQUESTRIAN TRAIL BRIDGES

KING COUNTY  
BRIDGE LOCATION #9  
TAYLOR MOUNTAIN FOREST

JOB NO: CJM  
DRAWN: CJM  
CHECKED: CJM  
DATE: 6/16/23

**C-1**  
COVER

SHT 1 OF 4



**PLAN VIEW**  
SCALE: 1" = 40'



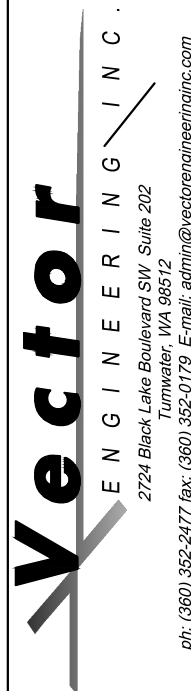
6/16/23

BRIDGE #9  
80' BRIDGE LENGTH  
47.44150, -121.94029

CAREY CREEK  
TRIBUTARY

OHWM

CAREY CREEK TRAIL



**BR-1**  
NOTES

SHT 2 OF 4

CAREY CREEK 80'  
EQUESTRIAN TRAIL BRIDGES

KING COUNTY

BRIDGE LOCATION #9

TAYLOR MOUNTAIN FOREST

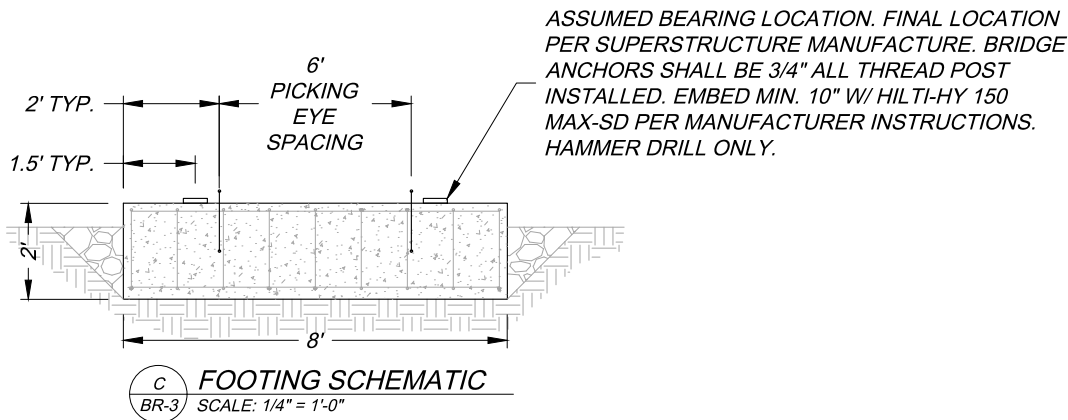
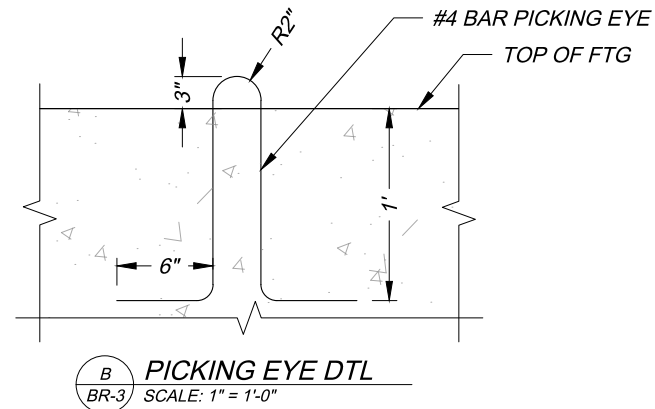
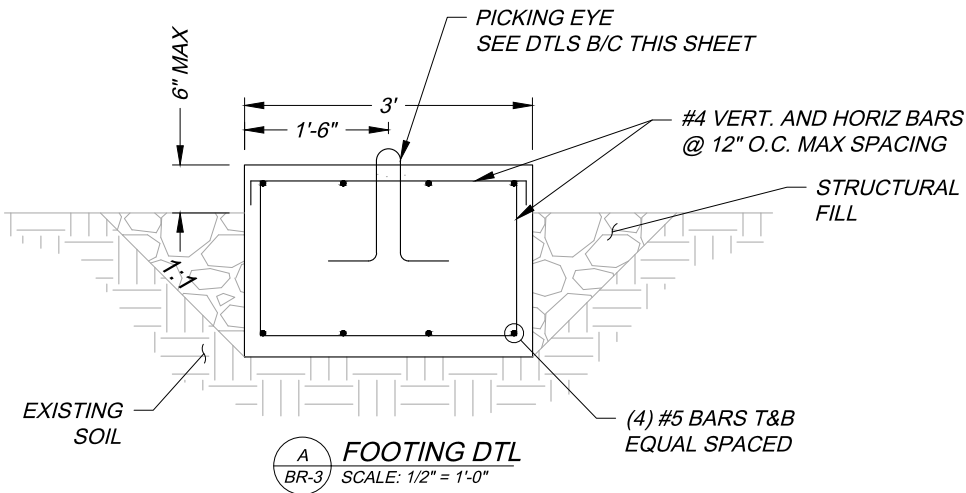
JOB NO: CJM

DRAWN: CJM

CHECKED: CJM

DATE: 6/16/23





6/16/23

CAREY CREEK 80'  
EQUESTRIAN TRAIL BRIDGES

KING COUNTY  
BRIDGE LOCATION #9  
TAYLOR MOUNTAIN FOREST

JOB NO: CJM  
DRAWN: CJM  
CHECKED: CJM  
DATE: 6/16/23

**Vector**  
ENGINEERING INC.  
2724 Black Lake Boulevard SW Suite 202  
Turnwater, WA 98512  
ph: (360) 352-2477 fax: (360) 352-0179 E-mail: admin@vectorengineeringinc.com

**BR-3**  
DETAILS

SHT 4 OF 4