

# TAYLOR MOUNTAIN FOREST

## TRAIL SYSTEM CONCEPT PLAN

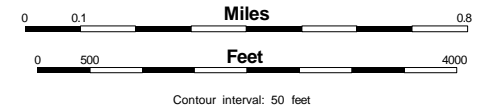
Trail Bridge Installations 1-6 will require Beaver Pond & Road I Trails to be temporarily closed beginning 8/12/2024 until as late as early October 2024.

This segment of Holder Creek Trail travels through private land, has multiple stream crossings without structures that are impacting streams with fish habitat. No sustainable trail bridge installations or suitable alternative route in the vicinity is feasible.

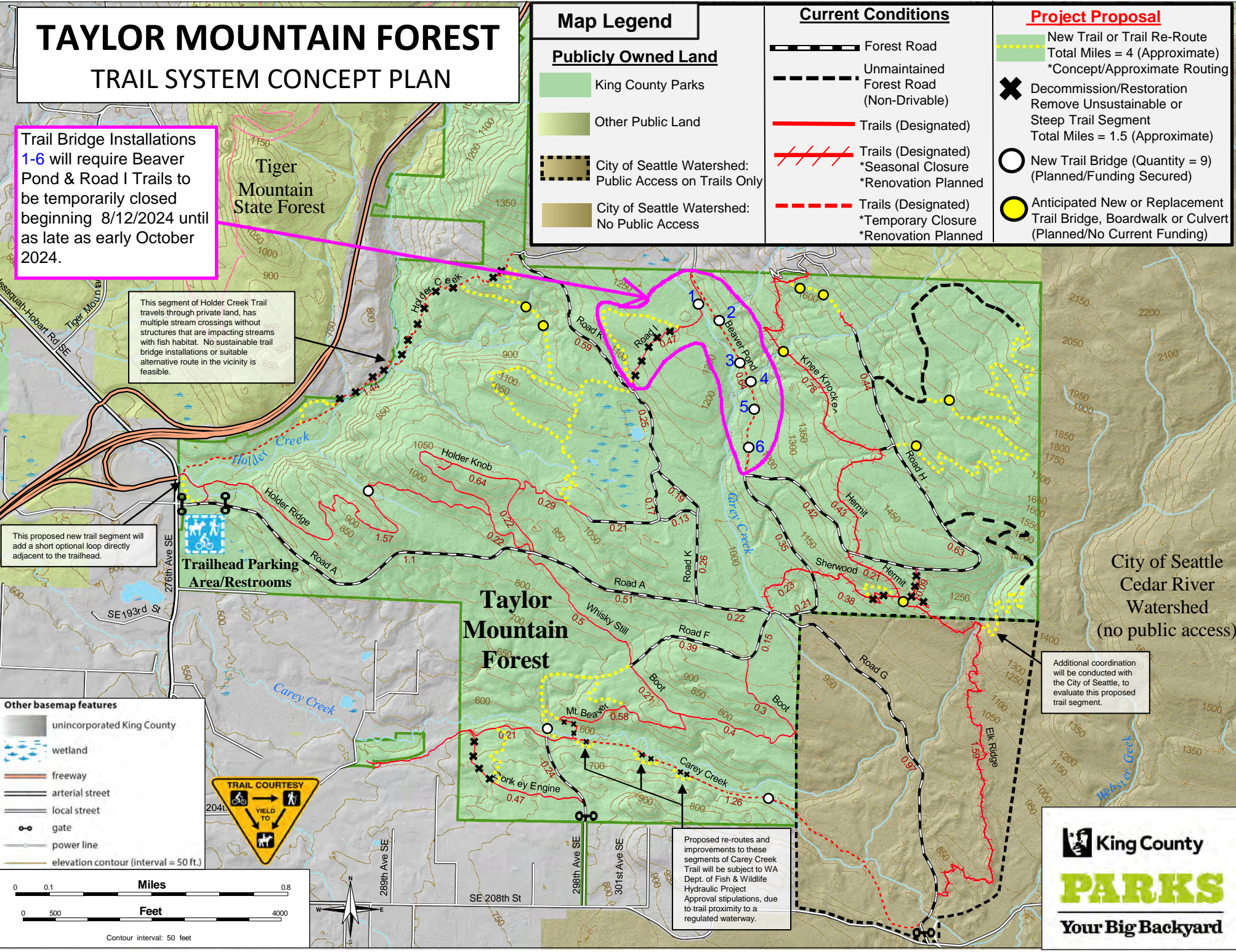
This proposed new trail segment will add a short optional loop directly adjacent to the trailhead.

**Other basemap features**

- unincorporated King County
- wetland
- freeway
- arterial street
- local street
- gate
- power line
- elevation contour (interval = 50 ft.)



Map Legend		Current Conditions		Project Proposal	
<b>Publicly Owned Land</b>		Forest Road		New Trail or Trail Re-Route	
King County Parks		Unmaintained Forest Road (Non-Drivable)		Total Miles = 4 (Approximate)	*Concept/Approximate Routing
Other Public Land		Trails (Designated)		Decommission/Restoration	Remove Unsustainable or Steep Trail Segment
City of Seattle Watershed: Public Access on Trails Only		Trails (Designated) *Seasonal Closure *Renovation Planned		New Trail Bridge (Quantity = 9) (Planned/Funding Secured)	Total Miles = 1.5 (Approximate)
City of Seattle Watershed: No Public Access		Trails (Designated) *Temporary Closure *Renovation Planned		Anticipated New or Replacement Trail Bridge, Boardwalk or Culvert (Planned/No Current Funding)	



Additional coordination will be conducted with the City of Seattle, to evaluate this proposed trail segment.

Proposed re-routes and improvements to these segments of Carey Creek Trail will be subject to WA Dept. of Fish & Wildlife Hydraulic Project Approval stipulations, due to trail proximity to a regulated waterway.

**King County**  
**PARKS**  
Your Big Backyard

City of Seattle Cedar River Watershed (no public access)



# Example Trail Bridge

✓ Weathering Steel Superstructure

✓ 54" Railing Height

✓ 5' Clear Travel Width

✓ Rough-Sawn Surface Western Red Cedar Decking

✓ Precast Concrete Abutments

