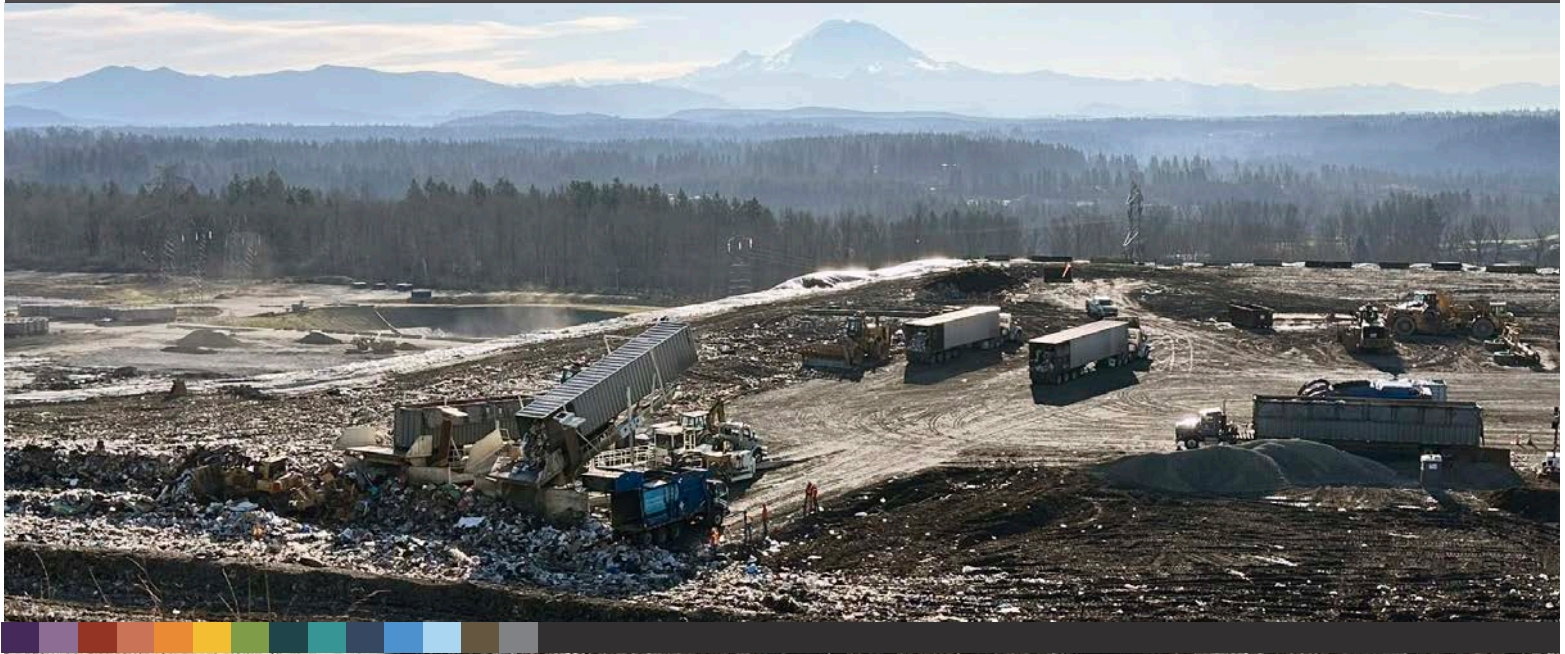


Cedar Hills Regional Landfill



16645 228th Avenue SE, Maple Valley in unincorporated King County | kingcounty.gov/cedar-hills

The Cedar Hills Regional Landfill has provided for the safe and efficient disposal of King County's solid waste since 1965. The landfill serves the solid waste disposal needs of 1.5 million people, or about 68 percent of King County's population.

Most of the waste received at the landfill is mixed municipal solid waste from both residential and non-residential sources. A small amount, less than 10%, is designated as special waste, which includes asbestos-containing materials, treated biomedical waste, and various other materials.

Property	920 acres including 417 acres of natural area, 472 acres of closed landfill space, and 31 acres of active landfill space. The landfill is also home to a range of wildlife, where the open space and surrounding habitat create a refuge for local species. Visitors can spot bald eagles, hawks and coyotes, roaming deer, and a resident herd of elk.
Hours of operation	The landfill operates 7 days a week, 362 days per year
Tons disposed	833,688 tons in 2025
Average tons of garbage per top load transfer trailer	20 tons
Average tons of garbage per transfer trailer	27 tons
Number of trailer loads tipped at the landfill	41,198 trailer loads in 2025



Active waste disposal area at the landfill



The landfill gas-to-energy plant at Cedar Hills



Resident wildlife on the property

Landfill gas-to-energy

The landfill gas system uses an extensive network of extraction wells to collect gas that is created as the waste breaks down. Monitoring probes located throughout the landfill buffer provide early detection of any underground gas movement. The entire gas collection system operates under a vacuum, continuously drawing gas inward to prevent off-site migration or releases into the surrounding environment. A specially trained team of landfill gas operators monitors and fine-tunes the

Cedar Hills Regional Landfill

system to ensure safe, efficient operation and regulatory compliance.

The Cedar Hills Renewable Gas to Energy plant (CHRG) captures approximately 6,500 standard cubic feet of landfill gas per minute, which is processed into pipeline-quality renewable natural gas. Converting the landfill gas means cleaner air and reduces greenhouse gas emissions from the landfill. The King County Solid Waste Division purchased the facility in 2025 from its previous owner/operator. Each year, CHRG generates more than 18 million kilowatt-hours of electricity – enough renewable energy to meet the annual natural gas needs of more than 16,700 homes in King County.

Area 8

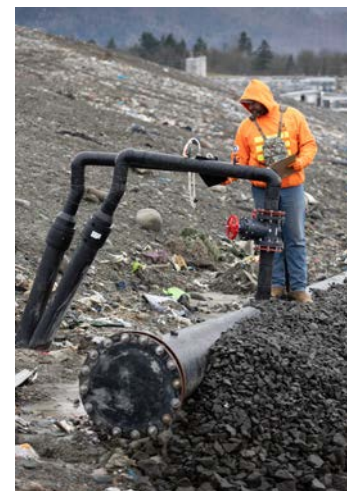
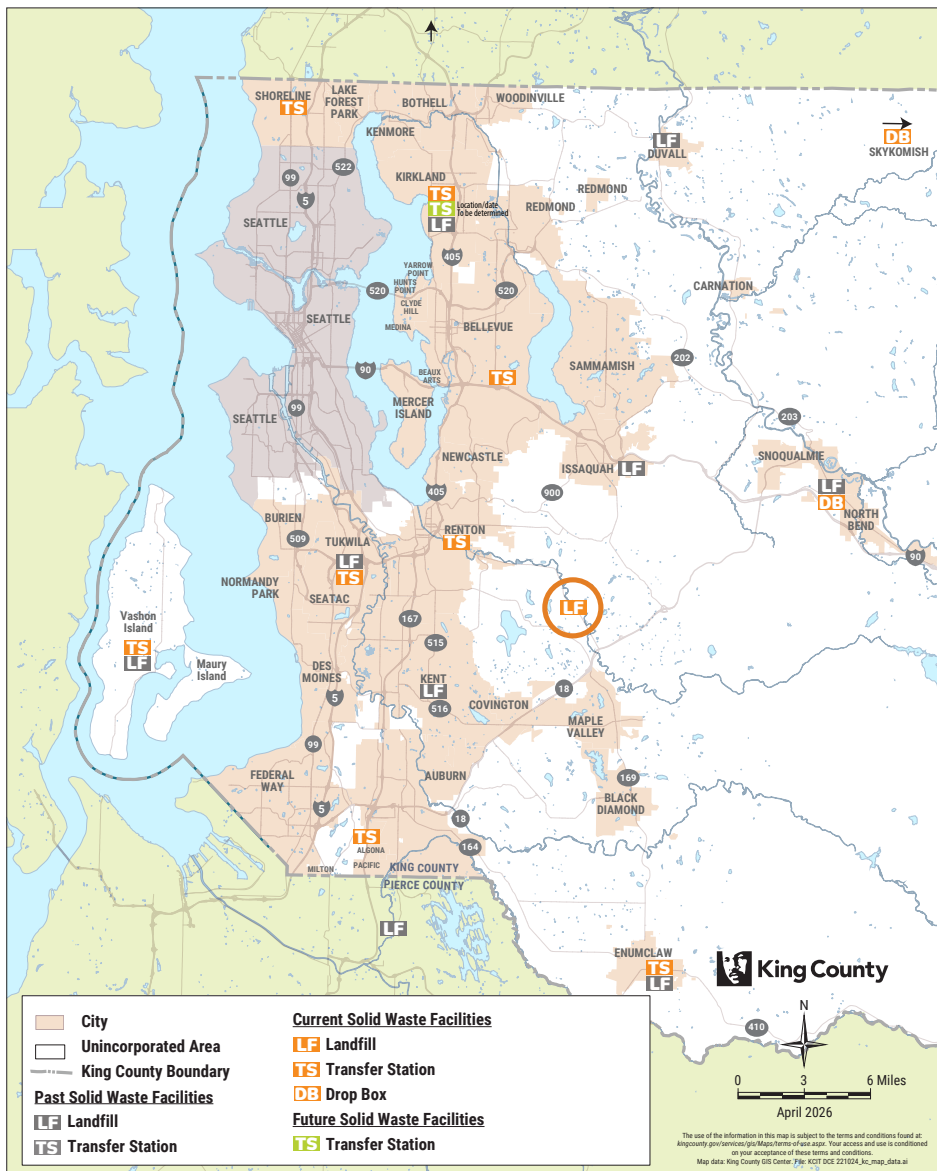
Current Operations and Future Improvements: Area 8 is the landfill's active disposal area and receives waste generated throughout King County. As part of ongoing site development and environmental protection efforts, Phase 1 closure of Area 8 was completed in the spring of 2026. This included installation of the final protective liner system. Phase 2 closure is planned for summer 2027 when filling operations will also begin on the upper portions of Areas 5 and 6. Two additional layers of waste, or "lifts," will be placed before final cover is installed. In late 2026, a major infrastructure improvement project will replace approximately 11,000 linear feet of landfill gas piping to ensure long-term reliability and environmental protection.

Environmental monitoring

Environmental protection systems are in place at Cedar Hills to safely manage landfill gas, stormwater, groundwater, and leachate—the liquid produced as water moves through waste. The Solid Waste Division regularly monitors 50+ groundwater wells located around the landfill. Our environmental scientists conduct routine sampling and monitoring to verify compliance with regulatory requirements and protect natural resources.

King County's 2019 Comprehensive Solid Waste Management Plan (Comp Plan)

As approved through the 2019 Comp Plan, the Solid Waste Division expanded the capacity of the landfill by opening Area 9, the final refuse area. Combined with the re-opening of Areas 5 and 6 to fill remaining vertical space, this final development means the landfill can meet the county's waste disposal needs through 2038. In preparation for the landfill's closure, a new long-term disposal method will be decided through the next update to the Comp Plan.



Environmental sampling and monitoring