

Attachment G

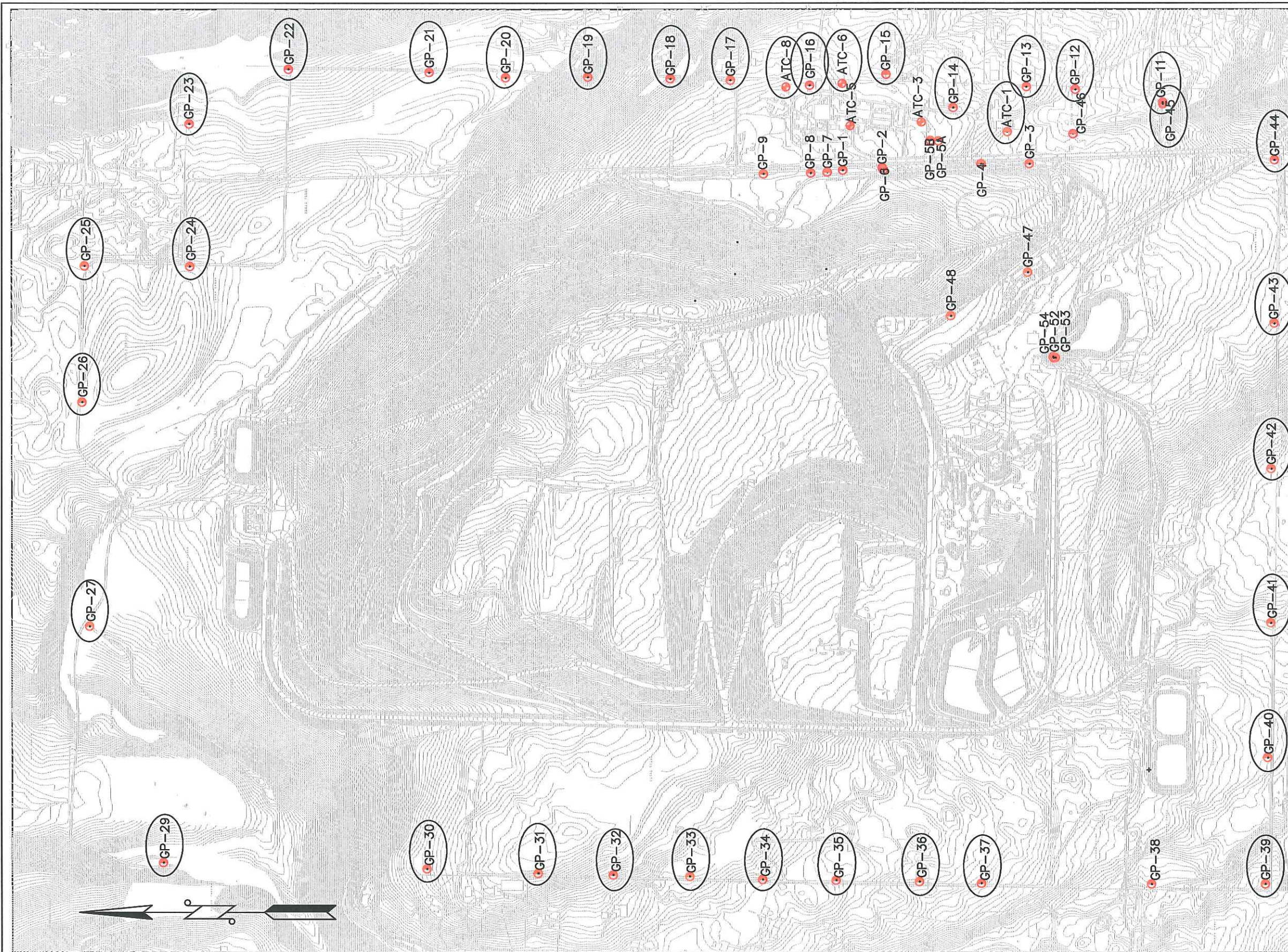
2018 Landfill Monitoring Results

Compliance Gas Monitoring Probes

Interior Gas Probes

Landfill Structure Monitoring

Passage Point Monitoring



Northing	Easting	Elev	Description	Inst. Date
170,000.33	1,701,942.93	640.02	GP-1 CASE EL	1985/86
169,740.00	1,701,960.00	622.00	GP-2 CASE EL	1985/86
168,758.11	1,701,985.28	594.21	GP-3 CASE EL	1985/86
169,058.18	1,701,972.94	606.19	GP-4 CASE EL	1985/86
169,370.19	1,702,134.95	616.23	GP-5A GRND EL	1988
169,422.02	1,702,138.87	619.63	GP-5B CASE EL	1988
169,731.73	1,701,946.48	635.59	GP-6 CASE EL	1988
170,101.22	1,701,930.58	640.66	GP-7 CASE EL	1988
170,208.37	1,701,925.10	642.67	GP-8 CASE EL	1988
170,519.95	1,701,919.34	645.27	GP-9 CASE EL	1988
			GP-10 NOT INSTALLED	1988
167,890.09	1,702,389.27	567.15	GP-11 CASE EL	1988
168,466.64	1,702,473.27	568.08	GP-12 CASE EL	1988
168,790.03	1,702,490.84	588.15	GP-13 CASE EL	1988
169,271.56	1,702,354.75	613.32	GP-14 CASE EL	1988
169,724.93	1,702,446.19	618.75	GP-15 CASE EL	1988
170,214.28	1,702,500.56	630.19	GP-16 CASE EL	1988
170,738.83	1,702,535.09	625.18	GP-17 CASE EL	1988
171,132.85	1,702,543.29	600.83	GP-18 CASE EL	1988
171,634.52	1,702,554.91	544.15	GP-19 CASE EL	1988
172,224.83	1,702,550.70	496.61	GP-20 CASE EL	1988
172,729.15	1,702,584.65	489.79	GP-21 CASE EL	1988
173,662.40	1,702,607.81	374.84	GP-22 CASE EL	1988
174,317.16	1,702,248.74	501.77	GP-23 CASE EL	1988
174,313.44	1,701,311.74	544.72	GP-24 CASE EL	1988
175,011.63	1,701,324.89	533.86	GP-25 CASE EL	1988
175,043.82	1,700,364.55	541.69	GP-26 CASE EL	1988
174,983.78	1,698,935.68	484.75	GP-27 CASE EL	1988
			GP-28 NOT INSTALLED	1988
174,455.39	1,697,385.67	431.05	GP-29 CASE EL	1988
172,787.40	1,697,339.61	644.62	GP-30 CASE EL	1988
172,013.96	1,697,321.72	673.37	GP-31 CASE EL	1988
171,524.28	1,697,308.08	647.57	GP-32 CASE EL	1988
171,017.18	1,697,293.36	625.03	GP-33 CASE EL	1988
170,537.12	1,697,287.04	604.93	GP-34 CASE EL	1988
170,083.32	1,697,286.32	596.28	GP-35 CASE EL	1988
169,510.89	1,697,265.94	574.92	GP-36 CASE EL	1988
169,049.03	1,697,252.08	557.38	GP-37 CASE EL	1988
167,909.72	1,697,243.54	523.57	GP-38 CASE EL	1988
167,239.45	1,697,232.41	541.03	GP-39 CASE EL	1988
167,205.68	1,698,100.32	502.77	GP-40 CASE EL	1988
167,191.96	1,698,965.50	482.97	GP-41 CASE EL	1988
167,183.37	1,699,979.90	457.95	GP-42 CASE EL	1988
167,160.00	1,700,961.11	536.86	GP-43 CASE EL	1988
167,135.28	1,702,007.20	529.11	GP-44 CASE EL	1994
167,888.74	1,702,378.77	567.47	GP-45 CASE EL	1994
168,482.15	1,702,182.52	589.79	GP-46 CASE EL	1994
168,783.75	1,701,272.71	600.07	GP-47 CASE EL	1994
169,289.65	1,700,985.98	616.56	GP-48 CASE EL	1994
168,612.91	1,700,710.62	561.13	GP-52 GRND EL	2001
168,601.99	1,700,711.34	561.02	GP-53 GRND EL	2001
168,617.89	1,700,717.53	561.20	GP-54 GRND EL	2001
168,916.92	1,702,195.87	591.29	GP-ATC-1 GRND EL	1985/86
169,479.79	1,702,259.97	616.25	GP-ATC-3 GRND EL	1985/86
			GP-ATC-4 ABANDONED/REMOVED	
169,950.42	1,702,235.30	625.65	GP-ATC-5 GRND EL	1985/86
170,002.70	1,702,512.99	620.16	GP-ATC-6 GRND EL	1985/86
170,371.26	1,702,490.56	629.94	GP-ATC-8 GRND EL	1985/86

- LEGEND**
- INTERIOR LFG MONITORING PROBES
 - LFG MIGRATION MONITORING PROBES

DATE	REVISION	BY
Mar 2013	Bosernep-Sept 2011	GTU

KING COUNTY DEPARTMENT OF NATURAL RESOURCES AND PARKS
SOLID WASTE DIVISION

CEDAR HILLS REGIONAL LANDFILL
LANDFILL GAS MIGRATION MONITORING PLAN

APPROVED VICTOR O. OKEREKE DATE 03-19-07
 RECOMMENDED TOM THENO DATE 09-28-07
 DESIGNED N/A DRAWN PHAM / McEWEN
 PROJECT NO. _____ SURVEY NO. _____ SHEET **1** OF 1
S:\CAD\Cadent\lfg-mon-prob-loc\all-fig-to2006_CadProbeOnly-bw-aug2012.tmap.dwg

Compliance Probes

CEDAR HILLS REGIONAL LANDFILL
Landfill Gas Compliance Probes
January 2018 Monitoring

Probe ID	Date/Time	CH4 %vol	CO2 %vol	O2 %vol	Lower Explosive Limit %LEL	Static Pressure in INWC	Comments
ATC-01D	1/24/2018 8:44	0.0	0.3	17.5	0	-0.04	
ATC-01S	1/24/2018 8:43	0.0	0.1	20.4	0	0.15	
ATC-06D	1/24/2018 9:55	0.0	1.0	2.3	0	2.22	
ATC-06S	1/24/2018 9:53	0.0	0.0	0.0	0	0	No Reading, Water
ATC-08D	1/24/2018 10:00	0.0	0.0	0.0	0	0	No Reading, Water
ATC-08S	1/24/2018 9:59	0.0	0.4	14.0	0	3.66	
GP-11A	1/24/2018 10:29	0.0	0.8	19.2	0	0.03	
GP-11B	1/24/2018 10:30	0.0	0.8	12.1	0	1.01	
GP-11C	1/24/2018 10:32	0.0	0.2	10.3	0	0.96	
GP-11D	1/24/2018 10:34	0.0	0.1	21.0	0	0.01	
GP-12A	1/24/2018 8:51	0.0	0.1	20.8	0	0.91	
GP-12B	1/24/2018 8:53	0.0	0.1	21.0	0	-0.02	
GP-12C	1/24/2018 8:55	0.0	0.1	17.9	0	6.81	
GP-12D	1/24/2018 8:56	0.0	0.6	11.8	0	4.22	
GP-13A	1/24/2018 9:01	0.0	0.1	21.0	0	-0.03	
GP-13B	1/24/2018 9:02	0.0	0.1	21.0	0	0	
GP-13C	1/24/2018 9:04	0.0	0.1	20.9	0	-0.09	
GP-13D	1/24/2018 9:06	0.0	0.1	20.5	0	2.57	
GP-14A	1/24/2018 9:11	0.0	0.1	20.9	0	0.7	
GP-14B	1/24/2018 9:13	0.0	0.2	20.5	0	0.61	
GP-15A	1/24/2018 9:24	0.0	0.0	0.0	0	0	No Reading, Water
GP-15C	1/24/2018 9:26	0.0	2.3	10.1	0	0.45	
GP-15D	1/24/2018 9:28	0.0	0.1	21.0	0	-2.26	
GP-16A	1/24/2018 10:03	0.0	0.0	0.0	0	0	No Reading, Water
GP-16B	1/24/2018 10:05	0.0	0.2	19.7	0	0.21	
GP-16C	1/24/2018 10:06	0.0	1.0	16.1	0	3.4	
GP-17A	1/24/2018 11:25	0.0	0.0	0.0	0	0	No Reading, Water
GP-17B	1/24/2018 11:26	0.0	1.0	15.2	0	0.12	
GP-17C	1/24/2018 11:28	0.0	0.1	20.1	0	3.71	
GP-18A	1/24/2018 11:31	0.0	0.0	0.0	0	0	No Reading, Water
GP-18B	1/24/2018 11:33	0.0	0.3	15.6	0	0.07	
GP-18C	1/24/2018 11:34	0.0	0.3	16.7	0	3.75	
GP-19A	1/24/2018 11:38	0.0	0.1	20.7	0	0.06	
GP-19B	1/24/2018 11:39	0.0	0.7	16.4	0	0.11	
GP-19C	1/24/2018 11:41	0.0	0.1	20.7	0	0.4	
GP-20A	1/24/2018 11:45	0.0	0.1	20.9	0	3.26	
GP-20B	1/24/2018 11:46	0.0	0.3	13.7	0	0.05	
GP-20C	1/24/2018 11:48	0.0	0.2	3.9	0	0.26	
GP-21A	1/24/2018 11:51	0.0	0.1	20.9	0	0.06	
GP-21B	1/24/2018 11:53	0.0	0.1	12.1	0	0.03	
GP-21C	1/24/2018 11:54	0.0	0.1	21.0	0	0.03	
GP-22A	1/24/2018 11:58	0.0	0.2	21.0	0	-3.45	
GP-22C	1/24/2018 12:00	0.0	1.0	3.4	0	5.44	
GP-23A	1/24/2018 12:09	0.0	0.1	20.8	0	0.05	
GP-23B	1/24/2018 12:11	0.0	0.1	20.9	0	0.35	
GP-23C	1/24/2018 12:12	0.0	0.1	21.0	0	1.08	
GP-24A	1/24/2018 12:17	0.0	0.1	20.7	0	0.09	
GP-24B	1/24/2018 12:19	0.0	0.9	17.0	0	0.04	
GP-25	1/24/2018 12:22	0.0	2.1	13.1	0	1.86	
GP-26	1/24/2018 12:26	0.0	0.5	19.4	0	0.08	
GP-27	1/24/2018 12:29	0.0	5.5	11.3	0	0.06	
GP-29A	1/24/2018 12:34	0.0	3.0	16.0	0	0.07	
GP-29B	1/24/2018 12:35	0.0	0.6	20.7	0	0.04	
GP-30A	1/24/2018 13:08	0.0	2.3	16.7	0	0.11	
GP-30B	1/24/2018 13:10	0.0	1.4	19.8	0	1.07	
GP-31A	1/24/2018 13:13	0.0	5.4	15.2	0	0	No Reading, Water
GP-31B	1/24/2018 13:14	0.0	0.4	15.8	0	3.74	
GP-31C	1/24/2018 13:16	0.0	0.1	21.0	0	0.96	
GP-32A	1/24/2018 13:19	0.0	0.6	21.0	0	0.07	
GP-32B	1/24/2018 13:21	0.0	0.1	21.0	0	0.06	
GP-32C	1/24/2018 13:22	0.0	0.1	21.0	0	0.1	
GP-33A	1/24/2018 13:26	0.0	0.1	21.0	0	4.35	
GP-33B	1/24/2018 13:27	0.0	0.1	21.0	0	0.07	
GP-33C	1/24/2018 13:29	0.0	0.3	19.8	0	0.92	
GP-34A	1/24/2018 13:32	0.0	0.0	0.0	0	0	No Reading, Water

CEDAR HILLS REGIONAL LANDFILL
Landfill Gas Compliance Probes
January 2018 Monitoring

Probe ID	Date/Time	CH4 %vol	CO2 %vol	O2 %vol	Lower Explosive Limit %LEL	Static Pressure in INWC	Comments
Chgp034B	1/24/2018 13:33	0.0	0.3	17.1	0	0.52	
Chgp034C	1/24/2018 13:35	0.0	0.1	16.3	0	4.38	
Chgp035A	1/24/2018 13:39	0.0	0.1	21.0	0	0.09	
Chgp035B	1/24/2018 13:40	0.0	0.1	21.0	0	0.05	
Chgp035C	1/24/2018 13:42	0.0	0.1	21.0	0	0.1	
Chgp036A	1/24/2018 13:46	0.0	0.3	9.9	0	0.47	
Chgp036B	1/24/2018 13:47	0.0	0.1	21.0	0	0.02	
Chgp036C	1/24/2018 13:51	0.0	0.2	16.0	0	1.57	
GP-37A	1/24/2018 13:55	0.0	0.0	0.0	0	0	No Reading, Water
GP-37B	1/24/2018 13:56	0.0	0.1	20.6	0	0.48	
GP-37C	1/24/2018 13:57	0.0	0.8	1.3	0	4.8	
GP-39	1/24/2018 14:04	0.0	0.1	20.7	0	-0.21	
GP-40	1/24/2018 14:08	0.0	0.1	20.4	0	0.04	
GP-41A	1/24/2018 14:13	0.0	0.1	20.7	0	0.04	
GP-41B	1/24/2018 14:14	0.0	0.1	20.8	0	0.03	
GP-41C	1/24/2018 14:16	0.0	0.1	20.8	0	0.05	
GP-42A	1/24/2018 14:21	0.0	0.1	20.7	0	0.03	
GP-42B	1/24/2018 14:22	0.0	0.7	16.9	0	1.51	
GP-43A	1/24/2018 14:26	0.0	0.1	20.4	0	0.03	
GP-43B	1/24/2018 14:27	0.0	0.1	20.7	0	0.03	
GP-43C	1/24/2018 14:29	0.0	0.1	20.0	0	0.06	
GP-44A	1/24/2018 14:33	0.0	0.1	20.6	0	0.04	
GP-44B	1/24/2018 14:34	0.0	1.2	8.2	0	18.9	
GP-44C	1/24/2018 14:36	0.0	0.1	19.7	0	0.11	
GP-45D	1/24/2018 10:39	0.0	0.1	19.7	0	1.45	
GP-45I	1/24/2018 10:38	0.0	0.1	17.8	0	0.1	
GP-45S	1/24/2018 10:36	0.0	0.1	21.0	0	0.04	

CEDAR HILLS REGIONAL LANDFILL
Landfill Gas Compliance Probes
February 2018 Monitoring

Probe ID	Date/Time	CH4 %vol	CO2 %vol	O2 %vol	Lower Explosive Limit %LEL	Static Pressure in INWC	Comments
ATC-01D	2/13/2018 13:32	0.0	0.2	19.1	0	-0.52	
ATC-01S	2/13/2018 13:31	0.0	0.1	19.8	0	-0.02	
ATC-06D	2/13/2018 14:37	0.0	0.9	3.3	0	1.68	
ATC-06S	2/13/2018 14:35	0.0	0.0	0.0	0	0	No Reading, Water
ATC-08D	2/13/2018 14:26	0.0	1.4	12.3	0	-0.11	
ATC-08S	2/13/2018 14:25	0.0	0.2	19.9	0	-0.02	
GP-11A	2/13/2018 13:16	0.0	0.1	19.0	0	-0.01	
GP-11B	2/13/2018 13:17	0.0	0.1	19.2	0	0.5	
GP-11C	2/13/2018 13:18	0.0	0.1	19.3	0	0.76	
GP-11D	2/13/2018 13:20	0.0	0.1	19.4	0	0.05	
GP-12A	2/13/2018 13:37	0.0	0.1	20.0	0	0.03	
GP-12B	2/13/2018 13:39	0.0	0.1	20.2	0	0	
GP-12C	2/13/2018 13:40	0.0	0.1	18.4	0	-13.51	
GP-12D	2/13/2018 13:42	0.0	0.6	9.5	0	-0.03	
GP-13A	2/13/2018 13:45	0.0	0.1	19.9	0	-0.01	
GP-13B	2/13/2018 13:46	0.0	0.1	20.5	0	-0.01	
GP-13C	2/13/2018 13:48	0.0	0.1	20.7	0	0.01	
GP-13D	2/13/2018 13:49	0.0	0.1	20.7	0	0.02	
GP-14A	2/13/2018 13:53	0.0	0.1	20.8	0	-0.01	
GP-14B	2/13/2018 13:54	0.0	0.1	20.9	0	-0.02	
GP-15A	2/13/2018 14:17	0.0	0.0	0.0	0	0	No Reading, Water
GP-15C	2/13/2018 14:18	0.0	0.3	19.8	0	0.55	
GP-15D	2/13/2018 14:19	0.0	0.1	20.8	0	-1.94	
GP-16A	2/13/2018 14:29	0.0	0.0	0.0	0	0	No Reading, Water
GP-16B	2/13/2018 14:30	0.0	0.1	20.6	0	0.69	
GP-16C	2/13/2018 14:32	0.0	0.1	20.6	0	0.06	
GP-17A	2/13/2018 7:53	0.0	0.0	0.0	0	0	No Reading, Water
GP-17B	2/13/2018 7:54	0.0	0.9	16.3	0	0	
GP-17C	2/13/2018 7:56	0.0	0.1	20.6	0	-1.52	
GP-18A	2/13/2018 7:59	0.0	0.0	0.0	0	0	No Reading, Water
GP-18B	2/13/2018 8:01	0.0	0.4	14.0	0	0.03	
GP-18C	2/13/2018 8:02	0.0	0.1	20.5	0	-1.48	
GP-19A	2/13/2018 8:12	0.0	0.1	21.0	0	-0.03	
GP-19B	2/13/2018 8:13	0.0	0.7	16.7	0	-0.03	
GP-19C	2/13/2018 8:15	0.0	0.1	21.0	0	-0.08	
GP-20A	2/13/2018 8:21	0.0	0.2	21.0	0	-2.62	
GP-20B	2/13/2018 8:23	0.0	0.3	19.5	0	-0.08	
GP-20C	2/13/2018 8:25	0.0	0.2	9.1	0	-0.02	
GP-21A	2/13/2018 8:28	0.0	0.1	21.0	0	-0.06	
GP-21B	2/13/2018 8:29	0.0	0.2	10.8	0	-0.06	
GP-21C	2/13/2018 8:30	0.0	0.0	0.0	0	0	No Reading, Water
GP-22A	2/13/2018 8:35	0.0	0.8	21.0	0	-0.03	
GP-22C	2/13/2018 8:36	0.0	0.2	21.0	0	-0.04	
GP-23A	2/13/2018 8:46	0.0	0.2	20.7	0	-0.16	
GP-23B	2/13/2018 8:47	0.0	0.1	21.0	0	-0.09	
GP-23C	2/13/2018 8:49	0.0	0.2	21.0	0	0.53	
GP-24A	2/13/2018 8:56	0.0	0.1	21.0	0	-0.05	
GP-24B	2/13/2018 9:00	0.0	2.9	16.4	0	-1.98	
GP-25	2/13/2018 9:03	0.0	2.2	9.4	0	-0.04	
GP-26	2/13/2018 9:08	0.0	0.9	18.0	0	-0.07	
GP-27	2/13/2018 9:14	0.0	6.2	10.2	0	-0.08	
GP-29A	2/13/2018 9:20	0.0	2.8	15.3	0	-0.09	
GP-29B	2/13/2018 9:22	0.0	0.6	20.5	0	-0.08	
GP-30A	2/13/2018 10:37	0.0	2.2	17.6	0	1.18	
GP-30B	2/13/2018 10:39	0.0	0.8	19.1	0	-0.44	
GP-31A	2/13/2018 10:41	0.0	0.7	19.1	0	-11.26	
GP-31B	2/13/2018 10:43	0.0	0.4	15.0	0	1.12	
GP-31C	2/13/2018 10:45	0.0	0.2	19.4	0	-1.15	
GP-32A	2/13/2018 10:47	0.0	0.6	18.8	0	0.17	
GP-32B	2/13/2018 10:49	0.0	0.3	19.6	0	-0.02	
GP-33A	2/13/2018 10:53	0.0	0.5	19.5	0	-15.17	
GP-33B	2/13/2018 10:54	0.0	0.1	20.0	0	-0.07	
GP-33C	2/13/2018 10:56	0.0	0.1	20.1	0	-1.04	
GP-34A	2/13/2018 10:58	0.0	0.0	0.0	0	0	No Reading, Water
GP-34B	2/13/2018 11:00	0.0	0.1	20.1	0	-0.07	

CEDAR HILLS REGIONAL LANDFILL
Landfill Gas Compliance Probes
February 2018 Monitoring

Probe ID	Date/Time	CH4 %vol	CO2 %vol	O2 %vol	Lower Explosive Limit %LEL	Static Pressure in INWC	Comments
GP-34C	2/13/2018 11:02	0.0	0.3	8.6	0	-1.27	
GP-35A	2/13/2018 11:05	0.0	0.1	19.6	0	-2.75	
GP-35B	2/13/2018 11:07	0.0	0.1	20.2	0	-0.06	
GP-35C	2/13/2018 11:08	0.0	0.1	20.3	0	-0.06	
GP-36A	2/13/2018 11:11	0.0	0.4	3.6	0	0.5	
GP-36B	2/13/2018 11:12	0.0	0.0	0.0	0	0	No Reading, Water
GP-36C	2/13/2018 11:14	0.0	0.3	19.7	0	-0.15	
GP-37A	2/13/2018 11:17	0.0	0.0	0.0	0	0	No Reading, Water
GP-37B	2/13/2018 11:18	0.0	0.1	19.0	0	0.16	
GP-37C	2/13/2018 11:20	0.0	0.7	6.2	0	-0.66	
GP-39	2/13/2018 11:34	0.0	1.1	18.0	0	0.4	
GP-40	2/13/2018 11:37	0.0	0.1	18.8	0	-0.02	
GP-41A	2/13/2018 11:40	0.0	0.1	20.0	0	-0.03	
GP-41B	2/13/2018 11:42	0.0	0.1	20.1	0	-0.02	
GP-41C	2/13/2018 11:43	0.0	0.1	20.1	0	-0.14	
GP-42A	2/13/2018 11:46	0.0	0.0	0.0	0	0	No Reading, Water
GP-42B	2/13/2018 11:47	0.0	0.4	19.2	0	0.39	
GP-43A	2/13/2018 11:53	0.0	0.4	18.0	0	-0.13	
GP-43B	2/13/2018 11:55	0.0	0.1	20.2	0	-0.01	
GP-43C	2/13/2018 11:56	0.0	0.1	20.3	0	0.01	
GP-44A	2/13/2018 12:00	0.0	0.3	20.1	0	-2.03	
GP-44B	2/13/2018 12:01	0.0	1.1	7.7	0	9.88	
GP-44C	2/13/2018 12:03	0.0	0.1	19.8	0	0	
GP-45D	2/13/2018 13:25	0.0	0.1	19.6	0	0.74	
GP-45I	2/13/2018 13:23	0.0	0.1	19.5	0	0.01	
GP-45S	2/13/2018 13:22	0.0	0.1	19.5	0	0.03	

CEDAR HILLS REGIONAL LANDFILL
Landfill Gas Compliance Probes
March 2018 Monitoring

Probe ID	Date/Time	CH4 %vol	CO2 %vol	O2 %vol	Lower Explosive Limit %LEL	Static Pressure in INWC	Comments
ATC-01D	3/21/2018 9:14	0.0	0.4	18.8	0	0.49	
ATC-01S	3/21/2018 9:13	0.0	0.1	20.7	0	-0.11	
ATC-06D	3/21/2018 13:29	0.0	0.7	1.5	0	3.47	
ATC-06S	3/21/2018 13:28	0.0	0.0	0.0	0	0	No Reading, Water
ATC-08D	3/21/2018 13:34	0.0	1.5	15.9	0	0	
ATC-08S	3/21/2018 13:32	0.0	0.2	15.3	0	1.21	
GP-11A	3/21/2018 8:49	0.0	0.1	20.7	0	0.11	
GP-11B	3/21/2018 8:51	0.0	0.6	12.7	0	1.06	
GP-11C	3/21/2018 8:52	0.0	0.2	13.3	0	1.37	
GP-11D	3/21/2018 8:53	0.0	0.1	20.7	0	0	
GP-12A	3/21/2018 9:26	0.0	0.1	20.9	0	0	
GP-12B	3/21/2018 9:27	0.0	0.1	21.0	0	-0.08	
GP-12C	3/21/2018 9:28	0.0	0.1	18.4	0	-14.95	
GP-12D	3/21/2018 9:30	0.0	0.3	18.0	0	0.37	
GP-13A	3/21/2018 9:18	0.0	0.1	20.8	0	0	
GP-13B	3/21/2018 9:20	0.0	0.1	20.9	0	0	
GP-13C	3/21/2018 9:21	0.0	0.1	19.3	0	-0.05	
GP-13D	3/21/2018 9:22	0.0	0.1	20.9	0	2.49	
GP-14A	3/21/2018 9:39	0.0	0.1	21.0	0	0.68	
GP-14B	3/21/2018 9:41	0.0	0.1	21.0	0	0.55	
GP-15A	3/21/2018 13:46	0.0	0.2	14.6	0	-8.36	Water at 40 seconds.
GP-15C	3/21/2018 13:49	0.0	1.2	11.9	0	0.29	
GP-15D	3/21/2018 13:50	0.0	0.1	19.2	0	-2.44	
GP-16A	3/21/2018 13:23	0.0	0.1	18.5	0	0.22	
GP-16B	3/21/2018 13:24	0.0	0.1	17.1	0	0.71	
GP-16C	3/21/2018 13:25	0.0	0.5	14.9	0	3.74	
GP-17A	3/21/2018 10:25	0.0	0.0	0.0	0	0	No Reading, Water
GP-17B	3/21/2018 10:27	0.0	0.9	16.2	0	0	
GP-17C	3/21/2018 10:28	0.0	0.1	20.1	0	2.99	
GP-18A	3/21/2018 10:33	0.0	0.0	0.0	0	0	No Reading, Water
GP-18B	3/21/2018 10:34	0.0	0.3	12.1	0	0	
GP-18C	3/21/2018 10:35	0.0	0.2	17.9	0	3.09	
GP-19A	3/21/2018 11:15	0.0	0.1	20.1	0	0	
GP-19B	3/21/2018 11:17	0.0	0.7	15.2	0	0	
GP-19C	3/21/2018 11:18	0.0	0.1	20.0	0	0.41	
GP-20A	3/21/2018 11:21	0.0	0.1	20.1	0	0	
GP-20B	3/21/2018 11:22	0.0	0.3	15.0	0	0	
GP-20C	3/21/2018 11:24	0.0	0.2	18.1	0	0.46	
GP-21A	3/21/2018 11:26	0.0	0.1	19.9	0	0.42	
GP-21B	3/21/2018 11:28	0.0	0.1	9.1	0	0	
GP-21C	3/21/2018 11:29	0.0	0.0	0.0	0	0	No Reading, Water
GP-22A	3/21/2018 11:32	0.0	0.5	19.6	0	-16.28	
GP-22C	3/21/2018 11:33	0.0	0.7	2.5	0	3.22	
GP-23A	3/21/2018 11:38	0.0	0.1	19.7	0	0	
GP-23B	3/21/2018 11:39	0.0	0.1	19.9	0	0.41	
GP-23C	3/21/2018 11:43	0.0	0.1	19.9	0	0	
GP-24A	3/21/2018 11:48	0.0	0.1	19.8	0	0	
GP-24B	3/21/2018 11:49	0.0	1.5	17.2	0	0	
GP-25	3/21/2018 11:52	0.0	2.4	12.0	0	0	
GP-26	3/21/2018 11:56	0.0	0.6	18.7	0	0	
GP-27	3/21/2018 11:59	0.0	5.7	9.0	0	0	
GP-29A	3/21/2018 12:03	0.0	3.8	12.9	0	0	
GP-29B	3/21/2018 12:05	0.0	0.6	19.4	0	0	
GP-30A	3/21/2018 14:10	0.0	1.9	17.3	0	0.34	
GP-30B	3/21/2018 14:12	0.0	1.2	17.4	0	0.83	
GP-31A	3/21/2018 14:14	0.0	0.0	0.0	0	0	No Reading, Water
GP-31B	3/21/2018 14:16	0.0	0.2	15.3	0	2.04	
GP-31C	3/21/2018 14:17	0.0	0.1	19.5	0	0.76	
GP-32A	3/21/2018 14:20	0.0	1.5	17.1	0	0.05	
GP-32B	3/21/2018 14:21	0.0	0.4	19.0	0	0	
GP-32C	3/21/2018 14:22	0.0	0.3	19.1	0	0	
GP-33A	3/21/2018 14:25	0.0	0.1	19.3	0	0	
GP-33B	3/21/2018 14:26	0.0	0.0	19.6	0	0	
GP-33C	3/21/2018 14:28	0.0	0.5	17.5	0	0.87	
GP-34A	3/21/2018 14:30	0.0	0.0	0.0	0	0	No Reading, Water

CEDAR HILLS REGIONAL LANDFILL
Landfill Gas Compliance Probes
March 2018 Monitoring

Probe ID	Date/Time	CH4 %vol	CO2 %vol	O2 %vol	Lower Explosive Limit %LEL	Static Pressure in INWC	Comments
GP-34B	3/21/2018 14:32	0.0	0.2	16.6	0	0	
GP-34C	3/21/2018 14:34	0.0	0.0	18.0	0	3.18	
GP-35A	3/21/2018 14:36	0.0	0.0	19.7	0	0	
GP-35B	3/21/2018 14:38	0.0	0.0	19.6	0	0	
GP-35C	3/21/2018 14:39	0.0	0.0	19.5	0	0.17	
GP-36A	3/21/2018 14:42	0.0	0.2	5.8	0	0.27	
GP-36B	3/21/2018 14:42	0.0	0.0	0.0	0	0	No Reading, Water
GP-36C	3/21/2018 14:44	0.0	0.2	9.5	0	3.6	
GP-37A	3/21/2018 14:46	0.0	0.0	0.0	0	0	No Reading, Water
GP-37B	3/21/2018 14:47	0.0	0.1	18.9	0	1.1	
GP-37C	3/21/2018 14:48	0.0	0.5	1.0	0	4.9	
GP-39	3/21/2018 7:52	0.0	1.1	18.1	0	0	
GP-40	3/21/2018 7:55	0.0	0.1	17.6	0	0	
GP-41A	3/21/2018 7:58	0.0	0.2	20.1	0	0	
GP-41B	3/21/2018 8:00	0.0	0.1	20.3	0	0	
GP-41C	3/21/2018 8:01	0.0	0.1	20.4	0	0	
GP-42A	3/21/2018 8:08	0.0	0.0	0.0	0	0	No Reading, Water
GP-42B	3/21/2018 8:09	0.0	0.5	17.8	0	1.67	
GP-43A	3/21/2018 8:13	0.0	0.3	17.8	0	-0.16	
GP-43B	3/21/2018 8:14	0.0	0.1	20.7	0	0	
GP-43C	3/21/2018 8:16	0.0	0.1	20.2	0	0.14	
GP-44A	3/21/2018 8:30	0.0	0.1	20.7	0	0	
GP-44B	3/21/2018 8:32	0.0	0.5	14.0	0	0.94	
GP-44C	3/21/2018 8:33	0.0	0.1	20.1	0	0.02	
GP-45D	3/21/2018 8:47	0.0	0.1	20.2	0	1.42	
GP-45I	3/21/2018 8:46	0.0	0.1	17.0	0	0.14	
GP-45S	3/21/2018 8:45	0.0	0.1	20.6	0	0	

CEDAR HILLS REGIONAL LANDFILL
Landfill Gas Compliance Probes
April 2018 Monitoring

Probe ID	Date/Time	CH4 % vol	CO2 % vol2	O2 % vol3	Lower Explosive Limit %LEL	Static Pressure in INWC	Comments
ATC-01D	4/23/2018 12:40	0.0	0.4	19.5	0	0.36	
ATC-01S	4/23/2018 12:39	0.0	0.1	21.0	0	0	
ATC-06D	4/23/2018 13:46	0.0	0.7	3.0	0	0.04	
ATC-06S	4/23/2018 13:43	0.0	0.0	0.0	0	-6.72	No Reading, Water
ATC-08D	4/23/2018 13:34	0.0	1.5	11.8	0	0.07	
ATC-08S	4/23/2018 13:32	0.0	0.2	19.5	0	0.15	
GP-11A	4/23/2018 12:29	0.0	0.1	20.9	0	0.19	
GP-11B	4/23/2018 12:30	0.0	0.1	20.9	0	0.16	
GP-11C	4/23/2018 12:32	0.0	0.1	21.0	0	0.3	
GP-11D	4/23/2018 12:33	0.0	0.1	20.9	0	0.1	
GP-12A	4/23/2018 12:45	0.0	0.0	21.0	0	0.02	
GP-12B	4/23/2018 12:46	0.0	0.0	21.0	0	0.16	
GP-12C	4/23/2018 12:48	0.0	0.1	18.3	0	-15.39	
GP-12D	4/23/2018 12:49	0.0	0.5	11.6	0	-2.34	
GP-13A	4/23/2018 12:52	0.0	0.1	21.0	0	0.01	
GP-13B	4/23/2018 12:53	0.0	0.1	21.0	0	0.08	
GP-13C	4/23/2018 12:55	0.0	0.1	21.0	0	-0.08	
GP-13D	4/23/2018 12:56	0.0	0.0	21.0	0	-0.91	
GP-14A	4/23/2018 13:00	0.0	0.0	21.0	0	-0.06	
GP-14B	4/23/2018 13:01	0.0	0.0	21.0	0	-0.46	
GP-15A	4/23/2018 13:27	0.0	0.0	0.0	0	0.15	No Reading, Water
GP-15C	4/23/2018 13:25	0.0	0.2	20.2	0	0.41	
GP-15D	4/23/2018 13:26	0.0	0.1	21.0	0	-2.55	
GP-16A	4/23/2018 13:39	0.0	0.1	21.0	0	0.13	
GP-16B	4/23/2018 13:37	0.0	0.1	21.0	0	0.46	
GP-16C	4/23/2018 13:38	0.0	0.0	21.0	0	-1.04	
GP-17A	4/23/2018 10:40	0.0	0.0	0.0	0	-8.79	No Reading, Water
GP-17B	4/23/2018 10:41	0.0	0.7	18.2	0	-0.06	
GP-17C	4/23/2018 10:42	0.0	0.1	21.0	0	-1.95	
GP-18A	4/23/2018 10:44	0.0	0.0	0.0	0	0.09	No Reading, Water
GP-18B	4/23/2018 10:46	0.0	0.3	13.0	0	0.01	
GP-18C	4/23/2018 10:47	0.0	0.1	20.9	0	-2.02	
GP-19A	4/23/2018 10:49	0.0	0.1	21.0	0	0.02	
GP-19B	4/23/2018 10:51	0.0	0.6	16.1	0	0.12	
GP-19C	4/23/2018 10:52	0.0	0.1	21.0	0	0.02	
GP-20A	4/23/2018 10:55	0.0	0.1	21.0	0	0.12	
GP-20B	4/23/2018 10:56	0.0	0.2	20.3	0	0.05	
GP-20C	4/23/2018 10:57	0.0	0.2	7.4	0	0.51	
GP-21A	4/23/2018 11:00	0.0	0.0	0.0	0	0.04	No Reading, Water
GP-21B	4/23/2018 11:01	0.0	0.1	10.1	0	0.03	
GP-21C	4/23/2018 11:02	0.0	0.1	10.1	0	-2.52	
GP-22A	4/23/2018 11:05	0.0	0.2	21.0	0	-7.48	
GP-22C	4/23/2018 11:06	0.0	0.8	2.6	0	-3.3	
GP-23A	4/23/2018 11:10	0.0	0.1	21.0	0	0.04	
GP-23B	4/23/2018 11:11	0.0	0.1	21.0	0	0.09	
GP-23C	4/23/2018 11:13	0.0	0.1	21.0	0	-1.15	

GP-24A	4/23/2018 11:20	0.0	0.1	21.0	0	0.09	
GP-24B	4/23/2018 11:21	0.0	0.2	20.4	0	0.09	
GP-25	4/23/2018 11:25	0.0	2.6	13.5	0	0.09	
GP-26	4/23/2018 11:28	0.0	0.6	20.5	0	0.03	
GP-27	4/23/2018 11:31	0.0	5.7	9.2	0	-0.04	
GP-29A	4/23/2018 11:36	0.0	2.6	15.6	0	-0.03	
GP-29B	4/23/2018 11:37	0.0	0.6	21.0	0	0	
GP-30A	4/23/2018 9:10	0.0	2.3	16.4	0	-0.03	
GP-30B	4/23/2018 9:12	0.0	1.1	19.9	0	-0.77	
GP-31A	4/23/2018 9:14	0.0	0.0	0.0	0	-9.62	No Reading, Water
GP-31B	4/23/2018 9:15	0.0	0.4	16.3	0	1.29	
GP-31C	4/23/2018 9:17	0.0	0.1	21.0	0	-0.02	
GP-32A	4/23/2018 9:19	0.0	0.8	18.7	0	0.01	
GP-32B	4/23/2018 9:20	0.0	0.2	21.0	0	0	
GP-32C	4/23/2018 9:21	0.0	0.3	21.0	0	0.19	
GP-33A	4/23/2018 9:24	0.0	0.2	21.0	0	0.03	
GP-33B	4/23/2018 9:25	0.0	0.1	21.0	0	0.24	
GP-33C	4/23/2018 9:26	0.0	0.1	21.0	0	-1.25	
GP-34A	4/23/2018 9:28	0.0	0.0	0.0	0	8.11	No Reading, Water
GP-34B	4/23/2018 9:30	0.0	0.1	21.0	0	-0.03	
GP-34C	4/23/2018 9:31	0.0	0.1	21.0	0	-1.89	
GP-35A	4/23/2018 9:34	0.0	0.1	21.0	0	0.03	
GP-35B	4/23/2018 9:35	0.0	0.1	21.0	0	0.04	
GP-35C	4/23/2018 9:36	0.0	0.1	21.0	0	-0.02	
GP-36A	4/23/2018 9:39	0.0	0.3	9.0	0	0.2	
GP-36B	4/23/2018 9:39	0.0	0.0	0.0	0	-4.23	No Reading, Water
GP-36C	4/23/2018 9:43	0.0	0.2	21.0	0	-0.44	
GP-37A	4/23/2018 9:46	0.0	0.0	0.0	0	0.74	No Reading, Water
GP-37B	4/23/2018 9:47	0.0	0.2	20.4	0	0.05	
GP-37C	4/23/2018 9:48	0.0	0.6	3.5	0	-1.24	
GP-39	4/23/2018 9:53	0.0	1.2	18.8	0	0.02	
GP-40	4/23/2018 9:56	0.0	0.1	17.8	0	0.07	
GP-41A	4/23/2018 9:59	0.0	0.1	21.0	0	0.08	
GP-41B	4/23/2018 10:00	0.0	0.1	21.0	0	0.5	
GP-41C	4/23/2018 10:01	0.0	0.1	21.0	0	0.11	
GP-42A	4/23/2018 10:04	0.0	0.0	0.0	0	-5.11	No Reading, Water
GP-42B	4/23/2018 10:05	0.0	0.5	19.4	0	-0.28	
GP-43A	4/23/2018 10:08	0.0	0.4	18.6	0	0.44	
GP-43B	4/23/2018 10:09	0.0	0.1	21.0	0	0.11	
GP-43C	4/23/2018 10:10	0.0	0.1	21.0	0	0.06	
GP-44A	4/23/2018 10:13	0.0	0.1	21.0	0	0.14	
GP-44B	4/23/2018 10:15	0.0	0.3	18.9	0	0.39	
GP-44C	4/23/2018 10:16	0.0	0.1	21.0	0	0.13	
GP-45D	4/23/2018 12:28	0.0	0.1	20.9	0	0.14	
GP-45I	4/23/2018 12:27	0.0	0.1	20.8	0	0.07	
GP-45S	4/23/2018 12:25	0.0	0.1	20.7	0	0.01	

CEDAR HILLS REGIONAL LANDFILL
Landfill Gas Compliance Probes
May 2018 Monitoring

Probe ID	Date/Time	CH4 %vol	CO2 %vol2	O2 %vol3	Lower Explosive Limit %LEL	Static Pressure in INWC	Comments
ATC-01D	5/22/2018 10:55	0	0.1	20.1	0	0.11	
ATC-01S	5/22/2018 10:53	0	0	20.2	0	0.05	
ATC-06D	5/22/2018 11:46	0	0.7	3	0	0.39	
ATC-06S	5/22/2018 11:44	0	1.6	16	0	-0.62	
ATC-08D	5/22/2018 11:50	0	2.2	16	0	0.02	
ATC-08S	5/22/2018 11:49	0	0.2	18.4	0	0.28	
GP-11A	5/22/2018 10:43	0	0.1	20.3	0	0.24	
GP-11B	5/22/2018 10:45	0	0	20.3	0	0.48	
GP-11C	5/22/2018 10:46	0	0.1	18.6	0	0.57	
GP-11D	5/22/2018 10:47	0	0.1	20.2	0	0.17	
GP-12A	5/22/2018 11:06	0	0.1	20.1	0	0.02	
GP-12B	5/22/2018 11:07	0	0	20.3	0	0.03	
GP-12C	5/22/2018 11:09	0	0.1	17.8	0	-12.93	
GP-12D	5/22/2018 11:10	0	0.3	16.9	0	0.23	
GP-13A	5/22/2018 10:59	0	0	20.2	0	0.09	
GP-13B	5/22/2018 11:00	0	0	20.2	0	0.09	
GP-13C	5/22/2018 11:01	0	0	20	0	0.04	
GP-13D	5/22/2018 11:03	0	0	20.1	0	0.66	
GP-14A	5/22/2018 11:16	0	0	20.5	0	0.19	
GP-14B	5/22/2018 11:17	0	0	20.4	0	0.11	
GP-15A	5/22/2018 11:28	0	0.2	20.3	0	0.07	
GP-15C	5/22/2018 11:29	0	0.6	16.6	0	0.23	
GP-15D	5/22/2018 11:30	0	0.1	20.4	0	-1.98	
GP-16A	5/22/2018 11:39	0	0.1	20.2	0	0.09	
GP-16B	5/22/2018 11:40	0	0.1	18.9	0	0.37	
GP-16C	5/22/2018 11:41	0	0.1	20.2	0	0.89	
GP-17A	5/22/2018 14:11	0	0	0	0	0	No Reading, Water
GP-17B	5/22/2018 14:12	0	0.7	16.5	0	0.01	
GP-17C	5/22/2018 14:13	0	0	19.6	0	1.49	
GP-18A	5/22/2018 14:16	0	1.5	13	0	-0.55	
GP-18B	5/22/2018 14:18	0	0.2	11.9	0	0.14	
GP-18C	5/22/2018 14:19	0	0.1	16.6	0	1.72	
GP-19A	5/22/2018 14:22	0	0	19.6	0	0.01	
GP-19B	5/22/2018 14:23	0	0.5	15.1	0	0.3	
GP-19C	5/22/2018 14:24	0	0	19.7	0	0.2	
GP-20A	5/22/2018 14:28	0	0	19.7	0	0.05	
GP-20B	5/22/2018 14:29	0	0.2	13.3	0	0.04	
GP-20C	5/22/2018 14:31	0	0.2	5.1	0	0.5	
GP-21A	5/22/2018 14:35	0	0	19.5	0	0.08	
GP-21B	5/22/2018 14:36	0	0.1	9	0	0.04	
GP-21C	5/22/2018 14:37	0	0.1	9.2	0	1.21	
GP-22A	5/22/2018 14:40	0	0.1	19.8	0	-11.18	
GP-22C	5/22/2018 14:41	0	1	1.6	0	0.65	
GP-23A	5/22/2018 14:46	0	0	19.9	0	-0.01	
GP-23B	5/22/2018 14:47	0	0	19.9	0	-0.02	

GP-23C	5/22/2018 14:49	0	0	20	0	0.03	
GP-24A	5/22/2018 14:52	0	6.1	7.1	0	0	
GP-24B	5/22/2018 14:53	0	0.2	19.4	0	0.03	
GP-25	5/22/2018 15:01	0	2.8	13.4	0	0.06	
GP-26	5/22/2018 15:04	0	0.6	18.9	0	0.19	
GP-27	5/22/2018 15:22	0	6.3	8	0	0.02	
GP-29A	5/22/2018 15:27	0	3.4	13	0	0.07	
GP-29B	5/22/2018 15:28	0	0.5	19.4	0	0.03	
GP-30A	5/22/2018 7:53	0	2.7	17.1	0	0	
GP-30B	5/22/2018 7:54	0	1.2	19.1	0	-0.34	
GP-31A	5/22/2018 7:57	0	0	0	0	0	No Reading, Water
GP-31B	5/22/2018 7:59	0	0.2	18.4	0	-0.01	
GP-31C	5/22/2018 8:00	0	0.1	20.7	0	0.1	
GP-32A	5/22/2018 8:03	0	0.2	20.7	0	0	
GP-32B	5/22/2018 8:05	0	0.2	20.7	0	0.08	
GP-32C	5/22/2018 8:06	0	0.3	20.6	0	0.02	
GP-33A	5/22/2018 8:09	0	1.7	18	0	0.01	
GP-33B	5/22/2018 8:10	0	0.1	20.8	0	-0.03	
GP-33C	5/22/2018 8:15	0	0	20.8	0	-0.59	
GP-34A	5/22/2018 8:17	0	0	0	0	0	No Reading, Water
GP-34B	5/22/2018 8:18	0	0.3	20.5	0	0.15	
GP-34C	5/22/2018 8:19	0	0.1	14.8	0	0.34	
GP-35A	5/22/2018 8:22	0	0.1	20.7	0	0.02	
GP-35B	5/22/2018 8:23	0	0.1	20.9	0	-0.01	
GP-35C	5/22/2018 8:25	0	0.1	20.9	0	0.06	
GP-36A	5/22/2018 8:28	0	0.3	1.6	0	0.37	
GP-36B	5/22/2018 8:30	0	0.1	20.6	0	0.03	
GP-36C	5/22/2018 8:31	0	0.3	14.2	0	0.48	
GP-37A	5/22/2018 8:36	0	0	0	0	0	No Reading, Water
GP-37B	5/22/2018 8:39	0	0.1	20.8	0	0.37	
GP-37C	5/22/2018 8:40	0	0.6	1.3	0	0.73	
GP-39	5/22/2018 9:16	0	1.1	18.6	0	0.01	
GP-40	5/22/2018 9:20	0	0.1	16.2	0	0	
GP-41A	5/22/2018 9:23	0	0.1	20.4	0	0.02	
GP-41B	5/22/2018 9:25	0	0.1	20.3	0	0.09	
GP-41C	5/22/2018 9:26	0	0.1	20.3	0	0.01	
GP-42A	5/22/2018 9:30	0	0	0	0	0	No Reading, Water
GP-42B	5/22/2018 9:31	0	0.8	17.3	0	0.44	
GP-43A	5/22/2018 9:35	0	0.3	18.4	0	-0.01	
GP-43B	5/22/2018 9:37	0	0	20.1	0	0.04	
GP-43C	5/22/2018 9:38	0	0.1	19.5	0	0.04	
GP-44A	5/22/2018 10:32	0	0.1	20.3	0	0.13	
GP-44B	5/22/2018 10:33	0	0	20.1	0	0	
GP-44C	5/22/2018 10:34	0	0.1	20	0	-0.4	
GP-45D	5/22/2018 10:42	0	0.1	20.1	0	0.59	
GP-45I	5/22/2018 10:40	0	0	20.1	0	0.04	
GP-45S	5/22/2018 10:39	0	0	20.3	0	0.07	

CEDAR HILLS REGIONAL LANDFILL
Landfill Gas Compliance Probes
June 2018 Monitoring

Probe ID	Date/Time	CH4 %vol	CO2 %vol2	O2 %vol3	Lower Explosive Limit %LEL	Static Pressure in INWC	Comments
ATC-1D	6/19/2018 13:38	0	0	19.9	0	0.15	
ATC-1S	6/19/2018 13:37	0	1.6	18.2	0	0.15	
ATC-6D	6/19/2018 15:50	0	0.1	20.5	0	0.07	
ATC-6S	6/19/2018 15:49	0	1.7	19.4	0	0.13	
ATC-8D	6/19/2018 15:36	0	2.1	19.8	0	0.05	
ATC-8S	6/19/2018 15:35	0	0.2	21	0	-0.45	
GP-11A	6/19/2018 13:24	0	0.5	17.8	0	0.14	
GP-11B	6/19/2018 13:25	0	0	19.5	0	0.1	
GP-11C	6/19/2018 13:26	0	0	19.5	0	0.08	
GP-11D	6/19/2018 13:28	0	0	19.5	0	0.17	
GP-12A	6/19/2018 13:45	0	0	20.4	0	0.13	
GP-12B	6/19/2018 13:46	0	0	20.4	0	0.19	
GP-12C	6/19/2018 13:48	0	0	19	0	-0.53	
GP-12D	6/19/2018 13:49	0	0	20.4	0	0.12	
GP-13A	6/19/2018 13:54	0	1	19.4	0	0.15	
GP-13B	6/19/2018 13:55	0	0	20.5	0	0.14	
GP-13C	6/19/2018 13:56	0	0	20.6	0	0.13	
GP-13D	6/19/2018 13:58	0	0	20.6	0	-0.84	
GP-14A	6/19/2018 14:05	0	0	20.7	0	0.04	
GP-14B	6/19/2018 14:07	0	0	20.8	0	0.03	
GP-15A	6/19/2018 14:32	0	0.4	20.3	0	0.18	
GP-15C	6/19/2018 15:28	0	0.1	21	0	0.01	
GP-15D	6/19/2018 15:29	0	0.1	22	0	-1.06	
GP-16A	6/19/2018 15:38	0	2.9	19.1	0	0.04	
GP-16B	6/19/2018 15:39	0	0.1	20.8	0	0.09	
GP-16C	6/19/2018 15:40	0	0	21	0	-0.88	
GP-17A	6/19/2018 8:14	0	0	20.8	0	-0.09	
GP-17B	6/19/2018 8:15	0	0.6	18.7	0	0	
GP-17C	6/19/2018 8:16	0	0	20.8	0	-1.51	
GP-18A	6/19/2018 8:19	0	2	16.2	0	0	
GP-18B	6/19/2018 8:21	0	0.1	18.6	0	0.02	
GP-18C	6/19/2018 8:22	0	0.1	19	0	-1.39	
GP-19A	6/19/2018 8:25	0	0	20.8	0	-0.01	
GP-19B	6/19/2018 8:26	0	0.5	16.9	0	0.01	
GP-19C	6/19/2018 8:27	0	0	20.8	0	-0.02	
GP-20A	6/19/2018 8:30	0	0.2	20.5	0	0.01	
GP-20B	6/19/2018 8:32	0	0.2	16.2	0	-0.01	
GP-20C	6/19/2018 8:33	0	0.1	10.8	0	0.03	
GP-21A	6/19/2018 8:36	0	0	20.7	0	0.01	
GP-21B	6/19/2018 8:38	0	0.1	10.5	0	0.01	
GP-21C	6/19/2018 8:39	0	0.1	20.7	0	-0.02	
GP-22A	6/19/2018 8:42	0	2.2	13.1	0	0.01	
GP-22C	6/19/2018 8:44	0	1.3	2.9	0	-1.33	
GP-23A	6/19/2018 8:49	0	0	20.9	0	-0.01	
GP-23B	6/19/2018 8:50	0	0	20.9	0	0.01	

GP-23C	6/19/2018 8:51	0	0	21	0	0	
GP-24A	6/19/2018 10:13	0	4.2	15.1	0	-0.01	
GP-24B	6/19/2018 10:14	0	0.1	20.4	0	-0.04	
GP-25	6/19/2018 10:18	0	2.8	15.9	0	0	
GP-26	6/19/2018 10:20	0	0.2	20.2	0	-0.07	
GP-27	6/19/2018 10:23	0	6.7	10.8	0	0.01	
GP-29A	6/19/2018 10:28	0	1.8	17.5	0	0.01	
GP-29B	6/19/2018 10:29	0	0.5	20.1	0	0.02	
GP-30A	6/19/2018 10:36	0	2.3	18.6	0	0	
GP-30B	6/19/2018 10:38	0	0.1	20.5	0	-0.49	
GP-31A	6/19/2018 10:42	0	0	0	0	0	No Reading, Water
GP-31B	6/19/2018 10:43	0	0.1	20.5	0	-0.48	
GP-31C	6/19/2018 10:44	0	0.2	20.2	0	0.03	
GP-32A	6/19/2018 10:46	0	0.1	20.6	0	0.03	
GP-32B	6/19/2018 10:47	0	0.1	20.6	0	0.02	
GP-32C	6/19/2018 10:48	0	0.1	20.6	0	0.02	
GP-33A	6/19/2018 10:51	0	2	18.5	0	0.04	
GP-33B	6/19/2018 10:52	0	0.1	20.7	0	0.02	
GP-33C	6/19/2018 10:53	0	0	20.7	0	-1.04	
GP-34A	6/19/2018 10:55	0	0	0	0	0	No Reading, Water
GP-34B	6/19/2018 10:56	0	0.1	20.7	0	0.02	
GP-34C	6/19/2018 10:57	0	0	20.7	0	-1.22	
GP-35A	6/19/2018 11:00	0	0.1	20.7	0	0.03	
GP-35B	6/19/2018 11:01	0	0	20.7	0	0.05	
GP-35C	6/19/2018 11:03	0	0	20.7	0	0.02	
GP-36A	6/19/2018 11:05	0	0.2	20.5	0	-0.1	
GP-36B	6/19/2018 11:07	0	0	20.6	0	0.08	
GP-36C	6/19/2018 11:08	0	0.2	20.3	0	-0.49	
GP-37A	6/19/2018 11:36	0	0	21	0	0.05	
GP-37B	6/19/2018 11:37	0	0	21	0	0.03	
GP-37C	6/19/2018 11:38	0	0.4	7.1	0	-0.97	
GP-39	6/19/2018 12:54	0	1.7	18	0	0.04	
GP-40	6/19/2018 12:58	0	0	16.3	0	0.05	
GP-41A	6/19/2018 13:02	0	5.5	13.9	0	0.08	
GP-41B	6/19/2018 13:03	0	0.1	19.9	0	0.08	
GP-41C	6/19/2018 13:04	0	0.1	19.8	0	0.07	
GP-42A	6/19/2018 13:07	0	0.1	19.9	0	0.1	
GP-42B	6/19/2018 13:08	0	0.8	17.7	0	-0.04	
GP-43A	6/19/2018 13:11	0	0	19.9	0	0.11	
GP-43B	6/19/2018 13:13	0	0	19.9	0	0.11	
GP-43C	6/19/2018 13:14	0	0	19.7	0	0.12	
GP-44A	6/19/2018 13:17	0	0	19.7	0	0.16	
GP-44B	6/19/2018 13:18	0	0.1	19.4	0	-0.02	
GP-44C	6/19/2018 13:19	0	0	19.6	0	0.14	
GP-45D	6/19/2018 13:32	0	0	19.8	0	-0.08	
GP-45I	6/19/2018 13:30	0	0	19.7	0	0.18	
GP-45S	6/19/2018 13:29	0	0	19.6	0	0.2	

CEDAR HILLS REGIONAL LANDFILL
Landfill Gas Compliance Probes
July 2018 Monitoring

Probe ID	Date/Time	CH4 %vol	CO2 %vol2	O2 %vol3	Lower Explosive Limit %LEL	Static Pressure in INWC	Comments
ATC-1D	7/24/2018 13:31	0	0.1	18.5	0	0	
ATC-1S	7/24/2018 13:29	0	1.9	18.4	0	0	
ATC-6D	7/24/2018 14:29	0	0.2	18.7	0	0	
ATC-6S	7/24/2018 14:28	0	1	18.3	0	0	
ATC-8D	7/24/2018 14:38	0	1.3	18.1	0	0	
ATC-8S	7/24/2018 14:37	0	0	19	0	0.04	
GP-11A	7/24/2018 14:45	0	0.9	18.1	0	0.04	
GP-11B	7/24/2018 14:46	0	0	19.1	0	0.16	
GP-11C	7/24/2018 14:48	0	0	19.2	0	0.14	
GP-11D	7/24/2018 14:49	0	0	19.1	0	0.16	
GP-12A	7/24/2018 13:43	0	0.4	18.9	0	0.05	
GP-12B	7/24/2018 13:45	0	0	19.3	0	0	
GP-12C	7/24/2018 13:46	0	0.1	18.3	0	0	
GP-12D	7/24/2018 13:47	0	0	19.1	0	0	
GP-13A	7/24/2018 13:35	0	1.1	18.3	0	0	
GP-13B	7/24/2018 13:37	0	0	19.2	0	-0.02	
GP-13C	7/24/2018 13:38	0	0	19.4	0	0.02	
GP-13D	7/24/2018 13:39	0	0	19.4	0	-0.3	
GP-14A	7/24/2018 13:53	0	0	19.2	0	-0.06	
GP-14B	7/24/2018 13:54	0	0	19.4	0	-0.1	
GP-15A	7/24/2018 14:16	0	4.8	7	0	0.09	
GP-15C	7/24/2018 14:18	0	0.7	14.3	0	0.07	
GP-15D	7/24/2018 14:19	0	0	18.9	0	-1.7	
GP-16A	7/24/2018 14:32	0	2	17.8	0	0.05	
GP-16B	7/24/2018 14:33	0	0	19	0	-1.42	
GP-16C	7/24/2018 14:34	0	0	19.1	0	-0.18	
GP-17A	7/25/2018 12:24	0	3.4	13.8	0	-0.09	
GP-17B	7/25/2018 12:25	0	0.7	16.2	0	0.02	
GP-17C	7/25/2018 12:27	0	0.1	19.1	0	-0.7	
GP-18A	7/25/2018 12:30	0	2.3	16.1	0	0	
GP-18B	7/25/2018 12:31	0	0.3	12.7	0	0.03	
GP-18C	7/25/2018 12:33	0	0.1	18.4	0	-0.75	
GP-19A	7/25/2018 12:36	0	1.1	16.9	0	-0.06	
GP-19B	7/25/2018 12:37	0	0.5	14.9	0	-0.02	
GP-19C	7/25/2018 12:38	0	0	18.8	0	-0.06	
GP-20A	7/25/2018 12:41	0	0.8	18.2	0	0	
GP-20B	7/25/2018 12:42	0	0.2	16.8	0	-0.03	
GP-20C	7/25/2018 12:44	0	0.1	7.8	0	0.44	
GP-21A	7/25/2018 12:46	0	0.4	18.1	0	0	
GP-21B	7/25/2018 12:48	0	0.1	9.1	0	0	
GP-21C	7/25/2018 12:48	0	0.1	9.3	0	1.15	
GP-22A	7/25/2018 12:52	0	2.3	13.9	0	0	
GP-22C	7/25/2018 12:53	0	1.5	1	0	-0.4	
GP-23A	7/25/2018 12:58	0	0	18.7	0	-0.02	
GP-23B	7/25/2018 12:59	0	0	18.9	0	0	

CEDAR HILLS REGIONAL LANDFILL
Landfill Gas Compliance Probes
July 2018 Monitoring

Probe ID	Date/Time	CH4 %vol	CO2 %vol2	O2 %vol3	Lower Explosive Limit %LEL	Static Pressure in INWC	Comments
GP-23C	7/25/2018 13:00	0	0	19	0	0	
GP-24A	7/25/2018 13:04	0	5.4	12.9	0	0	
GP-24B	7/25/2018 13:05	0	0.1	18.9	0	-0.23	
GP-25	7/25/2018 13:08	0	2.6	16.8	0	0.25	
GP-26	7/25/2018 13:11	0	0.4	18.4	0	0.03	
GP-27	7/25/2018 13:14	0	7.7	11	0	0.06	
GP-29A	7/25/2018 13:19	0	1.2	17.7	0	0.03	
GP-29B	7/25/2018 13:20	0	0.3	18.8	0	0.11	
GP-30A	7/24/2018 8:07	0	1.6	18.9	0	-0.07	
GP-30B	7/24/2018 8:08	0	0.2	19.8	0	-0.76	
GP-31A	7/24/2018 8:12	0	7.8	9.8	0	-0.03	
GP-31B	7/24/2018 8:13	0	0.2	17.6	0	-0.78	
GP-31C	7/24/2018 8:14	0	1.4	17.3	0	-0.03	
GP-32A	7/24/2018 8:17	0	0.1	19.8	0	-0.03	
GP-32B	7/24/2018 8:18	0	0.2	19.7	0	0.08	
GP-32C	7/24/2018 8:20	0	0.2	19.7	0	0	
GP-33A	7/24/2018 8:27	0	2.3	17.7	0	0	
GP-33B	7/24/2018 8:28	0	0.5	18.7	0	-0.03	
GP-33C	7/24/2018 8:29	0	0.1	19.9	0	-1.01	
GP-34A	7/24/2018 8:34	0	11.4	1.3	0	-0.15	
GP-34B	7/24/2018 8:35	0	0.1	19.7	0	0	
GP-34C	7/24/2018 8:36	0	0.1	19.7	0	-0.52	
GP-35A	7/24/2018 8:39	0	5.2	13.1	0	0.01	
GP-35B	7/24/2018 8:41	0	0.1	19.9	0	-0.01	
GP-35C	7/24/2018 8:42	0	0.1	19.9	0	0.01	
GP-36A	7/24/2018 8:46	0	0.7	19.6	0	-1.17	
GP-36B	7/24/2018 8:47	0	3.7	16.3	0	0.1	
GP-36C	7/24/2018 8:48	0	0.4	12.8	0	-0.28	
GP-37A	7/24/2018 8:51	0	1.6	16.6	0	0	
GP-37B	7/24/2018 8:52	0	0.4	17.8	0	0.91	
GP-37C	7/24/2018 8:53	0	0.5	1.5	0	-0.36	
GP-39	7/24/2018 10:47	0	1.1	17.9	0	0.03	
GP-40	7/24/2018 10:50	0	0	14.1	0	0.13	
GP-41A	7/24/2018 10:54	0	3.3	16.2	0	0.06	
GP-41B	7/24/2018 10:55	0	0.7	6.3	0	0.13	
GP-41C	7/24/2018 10:56	0	0.1	18.7	0	0.11	
GP-42A	7/24/2018 11:00	0	3.7	13.4	0	0	
GP-42B	7/24/2018 11:02	0	0.7	17.1	0	-0.16	
GP-43A	7/24/2018 11:04	0	0.4	17.5	0	0.07	
GP-43B	7/24/2018 11:06	0	0	18.4	0	0.12	
GP-43C	7/24/2018 11:07	0	0	18.5	0	0	
GP-44A	7/24/2018 11:10	0	5.7	10.4	0	0.04	
GP-44B	7/24/2018 11:12	0	0.3	16.3	0	0.11	
GP-44C	7/24/2018 11:13	0	0	18.6	0	0.06	
GP-45D	7/24/2018 14:53	0	0	19.3	0	0	

CEDAR HILLS REGIONAL LANDFILL
Landfill Gas Compliance Probes
July 2018 Monitoring

Probe ID	Date/Time	CH4 % vol	CO2 % vol2	O2 % vol3	Lower Explosive Limit %LEL	Static Pressure in INWC	Comments
GP-45I	7/24/2018 14:52	0	0	19.2	0	0.05	
GP-45S	7/24/2018 14:51	0	0	19.2	0	0.07	

CEDAR HILLS REGIONAL LANDFILL
Landfill Gas Compliance Probes
August 2018 Monitoring

Probe ID	Date/Time	CH4 %vol	CO2 %vol2	O2 %vol3	Lower Explosive Limit %LEL	Static Pressure in INWC	Comments
ATC-1D	8/14/2018 12:40	0.0	0.0	20.5	0	-0.04	
ATC-1S	8/14/2018 12:38	0.0	1.3	20.1	0	0.08	
ATC-6D	8/14/2018 13:42	0.0	0.2	20.8	0	0.22	
ATC-6S	8/14/2018 13:40	0.0	0.7	20.9	0	0.21	
ATC-8D	8/14/2018 13:32	0.0	1.2	20.4	0	0.15	
ATC-8S	8/14/2018 13:30	0.0	0.1	20.9	0	0.1	
GP-11A	8/14/2018 12:26	0.0	1.0	20.1	0	0.04	
GP-11B	8/14/2018 12:28	0.0	0.1	20.8	0	0.39	
GP-11C	8/14/2018 12:29	0.0	0.1	20.3	0	0.55	
GP-11D	8/14/2018 12:30	0.0	0.1	20.7	0	0.19	
GP-12A	8/14/2018 12:46	0.0	0.8	20.2	0	0.09	
GP-12B	8/14/2018 12:48	0.0	0.0	20.9	0	0.08	
GP-12C	8/14/2018 12:49	0.0	0.1	20.0	0	0.09	
GP-12D	8/14/2018 12:50	0.0	0.1	20.5	0	0.28	
GP-13A	8/14/2018 12:54	0.0	1.1	20.0	0	0.07	
GP-13B	8/14/2018 12:55	0.0	0.0	21.0	0	0.1	
GP-13C	8/14/2018 12:57	0.0	0.0	20.9	0	0.14	
GP-13D	8/14/2018 12:58	0.0	0.0	21.0	0	1.08	
GP-14A	8/14/2018 13:03	0.0	0.0	20.9	0	0.39	
GP-14B	8/14/2018 13:04	0.0	0.0	21.0	0	0.32	
GP-15A	8/14/2018 13:21	0.0	5.3	7.4	0	0.09	
GP-15C	8/14/2018 13:22	0.0	0.5	17.2	0	0.23	
GP-15D	8/14/2018 13:23	0.0	0.1	21.0	0	-1.66	
GP-16A	8/14/2018 13:34	0.0	1.8	20.0	0	0.17	
GP-16B	8/14/2018 13:35	0.0	0.0	21.0	0	0.4	
GP-16C	8/14/2018 13:37	0.0	0.4	17.4	0	1.34	
GP-17A	8/14/2018 9:48	0.0	3.3	16.9	0	0.03	
GP-17B	8/14/2018 9:50	0.0	0.7	18.0	0	0.06	
GP-17C	8/14/2018 9:51	0.0	0.1	21.0	0	0.66	
GP-18A	8/14/2018 9:54	0.0	2.3	18.6	0	-0.03	
GP-18B	8/14/2018 9:56	0.0	0.3	15.0	0	0.07	
GP-18C	8/14/2018 9:58	0.0	0.2	18.3	0	0.95	
GP-19A	8/14/2018 10:01	0.0	1.2	19.0	0	-0.01	
GP-19B	8/14/2018 10:03	0.0	0.6	16.9	0	-0.01	
GP-19C	8/14/2018 10:05	0.0	0.0	21.0	0	0.02	
GP-20A	8/14/2018 10:08	0.0	1.2	20.4	0	0.01	
GP-20B	8/14/2018 10:10	0.0	0.2	19.7	0	0.01	
GP-20C	8/14/2018 10:11	0.0	0.2	8.0	0	0.19	
GP-21A	8/14/2018 10:15	0.0	1.2	19.5	0	0.02	
GP-21B	8/14/2018 10:17	0.0	0.1	10.6	0	-0.02	
GP-21C	8/14/2018 10:18	0.0	0.0	0.0	0	-0.76	NR-H2O
GP-22A	8/14/2018 10:22	0.0	2.3	18.7	0	-0.03	
GP-22C	8/14/2018 10:24	0.0	1.4	1.3	0	1.01	
GP-23A	8/14/2018 10:29	0.0	0.1	20.9	0	0.04	
GP-23B	8/14/2018 10:31	0.0	0.0	21.0	0	0.01	

CEDAR HILLS REGIONAL LANDFILL
Landfill Gas Compliance Probes
August 2018 Monitoring

Probe ID	Date/Time	CH4 %vol	CO2 %vol2	O2 %vol3	Lower Explosive Limit %LEL	Static Pressure in INWC	Comments
GP-23C	8/14/2018 10:33	0.0	0.0	21.0	0	0.01	
GP-24A	8/14/2018 10:42	0.0	5.3	15.3	0	-0.03	
GP-24B	8/14/2018 10:45	0.0	0.3	19.9	0	0.23	
GP-25	8/14/2018 10:48	0.0	2.7	18.9	0	0.03	
GP-26	8/14/2018 10:51	0.0	0.5	20.8	0	0.52	
GP-27	8/14/2018 10:54	0.0	7.4	14.2	0	0.01	
GP-29A	8/14/2018 10:58	0.0	1.8	19.7	0	0.01	
GP-29B	8/14/2018 10:59	0.0	0.3	21.0	0	-0.06	
GP-30A	8/14/2018 8:19	0.0	0.8	19.6	0	-0.01	
GP-30B	8/14/2018 8:21	0.0	0.4	19.8	0	-0.4	
GP-31A	8/14/2018 8:23	0.0	6.9	12.3	0	0.06	
GP-31B	8/14/2018 8:25	0.0	0.3	16.4	0	0.15	
GP-31C	8/14/2018 8:26	0.0	1.4	17.9	0	0.03	
GP-32A	8/14/2018 8:29	0.0	0.1	20.2	0	0.04	
GP-32B	8/14/2018 8:30	0.0	0.2	20.1	0	0.06	
GP-32C	8/14/2018 8:32	0.0	0.3	20.1	0	-0.03	
GP-33A	8/14/2018 8:34	0.0	2.1	18.6	0	0.05	
GP-33B	8/14/2018 8:36	0.0	0.5	19.8	0	0.03	
GP-33C	8/14/2018 8:38	0.0	0.1	20.5	0	-0.64	
GP-34A	8/14/2018 8:41	0.0	9.3	7.0	0	0.13	
GP-34B	8/14/2018 8:43	0.0	0.2	20.4	0	0.08	
GP-34C	8/14/2018 8:44	0.0	0.1	20.2	0	0.39	
GP-35A	8/14/2018 8:47	0.0	5.2	16.0	0	0.07	
GP-35B	8/14/2018 8:49	0.0	0.1	20.7	0	0.05	
GP-35C	8/14/2018 8:50	0.0	0.1	20.8	0	0.09	
GP-36A	8/14/2018 8:54	0.0	1.3	20.0	0	-0.37	
GP-36B	8/14/2018 8:55	0.0	3.6	18.2	0	0.06	
GP-36C	8/14/2018 8:57	0.0	0.3	13.0	0	0.47	
GP-37A	8/14/2018 9:00	0.0	1.8	18.3	0	0.13	
GP-37B	8/14/2018 9:02	0.0	0.5	19.6	0	0.14	
GP-37C	8/14/2018 9:04	0.0	0.6	1.3	0	1.12	
GP-39	8/14/2018 9:09	0.0	0.6	18.1	0	0.28	
GP-40	8/14/2018 9:12	0.0	0.1	15.8	0	0.01	
GP-41A	8/14/2018 9:15	0.0	3.0	18.7	0	0	
GP-41B	8/14/2018 9:17	0.0	0.7	8.0	0	0.05	
GP-41C	8/14/2018 9:18	0.0	0.1	20.9	0	0	
GP-42A	8/14/2018 9:22	0.0	4.1	15.5	0	0.03	
GP-42B	8/14/2018 9:24	0.0	0.6	20.0	0	0.41	
GP-43A	8/14/2018 9:26	0.0	0.3	20.8	0	0.2	
GP-43B	8/14/2018 9:28	0.0	0.1	21.0	0	-0.01	
GP-43C	8/14/2018 9:29	0.0	0.1	21.0	0	0.04	
GP-44A	8/14/2018 9:33	0.0	5.8	14.8	0	0.03	
GP-44B	8/14/2018 9:34	0.0	0.2	21.0	0	0.3	
GP-44C	8/14/2018 9:35	0.0	0.1	21.0	0	0.01	
GP-45D	8/14/2018 12:25	0.0	0.1	20.6	0	0.49	

CEDAR HILLS REGIONAL LANDFILL
Landfill Gas Compliance Probes
August 2018 Monitoring

Probe ID	Date/Time	CH4 % vol	CO2 % vol2	O2 % vol3	Lower Explosive Limit %LEL	Static Pressure in INWC	Comments
GP-45I	8/14/2018 12:24	0.0	0.1	20.6	0	0.03	
GP-45S	8/14/2018 12:23	0.0	0.0	20.7	0	0.02	

CEDAR HILLS REGIONAL LANDFILL
Landfill Gas Compliance Probes
September 2018 Monitoring

Probe ID	Date/Time	CH4 %vol	CO2 %vol2	O2 %vol3	Lower Explosive Limit %LEL	Static Pressure in INWC	Comments
ATC-1D	9/18/2018 13:15	0.0	0.2	18.6	0	0	
ATC-1S	9/18/2018 13:13	0.0	0.9	21.0	0	0.05	
ATC-6D	9/18/2018 14:20	0.0	0.2	21.0	0	-0.03	
ATC-6S	9/18/2018 14:18	0.0	0.6	21.0	0	0.23	
ATC-8D	9/18/2018 14:11	0.0	1.2	21.0	0	0.07	
ATC-8S	9/18/2018 14:09	0.0	0.1	21.0	0	-0.06	
GP-11A	9/18/2018 13:01	0.0	0.9	20.8	0	0.1	
GP-11B	9/18/2018 13:03	0.0	0.0	21.0	0	-0.04	
GP-11C	9/18/2018 13:04	0.0	0.0	21.0	0	-0.12	
GP-11D	9/18/2018 13:06	0.0	0.1	21.0	0	-0.39	
GP-12A	9/18/2018 13:22	0.0	1.2	21.0	0	0.08	
GP-12B	9/18/2018 13:24	0.0	0.0	21.0	0	0.07	
GP-12C	9/18/2018 13:25	0.0	0.1	21.0	0	0.08	
GP-12D	9/18/2018 13:27	0.0	0.1	21.0	0	-1.84	
GP-13A	9/18/2018 13:31	0.0	1.3	21.0	0	0.06	
GP-13B	9/18/2018 13:33	0.0	0.1	21.0	0	0.11	
GP-13C	9/18/2018 13:34	0.0	0.0	21.0	0	0.07	
GP-13D	9/18/2018 13:36	0.0	0.0	21.0	0	-0.85	
GP-14A	9/18/2018 13:40	0.0	0.0	21.0	0	-0.2	
GP-14B	9/18/2018 13:42	0.0	0.0	21.0	0	-0.26	
GP-15A	9/18/2018 14:01	0.0	6.1	10.2	0	0.03	
GP-15C	9/18/2018 13:57	0.0	0.3	20.8	0	0.11	
GP-15D	9/18/2018 13:59	0.0	0.1	21.0	0	-1.05	
GP-16A	9/18/2018 14:13	0.0	1.7	21.0	0	0.02	
GP-16B	9/18/2018 14:14	0.0	0.1	21.0	0	-2.73	
GP-16C	9/18/2018 14:15	0.0	0.1	21.0	0	-1.03	
GP-17A	9/18/2018 7:44	0.0	3.4	18.6	0	0.04	
GP-17B	9/18/2018 7:45	0.0	0.7	18.7	0	0.04	
GP-17C	9/18/2018 7:47	0.0	0.1	21.0	0	-1.48	
GP-18A	9/18/2018 7:50	0.0	2.5	19.0	0	0.03	
GP-18B	9/18/2018 7:51	0.0	0.4	15.3	0	0.13	
GP-18C	9/18/2018 7:53	0.0	0.2	21.0	0	-1.63	
GP-19A	9/18/2018 7:58	0.0	1.3	19.4	0	0.06	
GP-19B	9/18/2018 7:59	0.0	0.7	16.9	0	0.08	
GP-19C	9/18/2018 8:01	0.0	0.1	21.0	0	-0.06	
GP-20A	9/18/2018 8:05	0.0	1.0	21.0	0	0.06	
GP-20B	9/18/2018 8:06	0.0	0.2	21.0	0	0.05	
GP-20C	9/18/2018 8:08	0.0	1.9	20.4	0	-0.02	
GP-21A	9/18/2018 8:12	0.0	0.6	21.0	0	-0.03	
GP-21B	9/18/2018 8:13	0.0	0.2	11.2	0	0.08	
GP-21C	9/18/2018 8:14	0.0	0.0	0.0	0	-1.23	NR-H2O
GP-22A	9/18/2018 8:19	0.0	2.3	20.0	0	0.06	
GP-22C	9/18/2018 8:20	0.0	0.6	5.0	0	-1.58	
GP-23A	9/18/2018 8:26	0.0	0.1	21.0	0	0.09	
GP-23B	9/18/2018 8:27	0.0	0.1	21.0	0	0	

CEDAR HILLS REGIONAL LANDFILL
Landfill Gas Compliance Probes
September 2018 Monitoring

Probe ID	Date/Time	CH4 %vol	CO2 %vol2	O2 %vol3	Lower Explosive Limit %LEL	Static Pressure in INWC	Comments
GP-23C	9/18/2018 8:29	0.0	0.1	21.0	0	-0.07	
GP-24A	9/18/2018 8:39	0.0	5.1	16.7	0	0.03	
GP-24B	9/18/2018 8:40	0.0	0.2	21.0	0	-0.43	
GP-25	9/18/2018 8:46	0.0	2.5	20.1	0	0.06	
GP-26	9/18/2018 8:49	0.0	0.3	21.0	0	-0.51	
GP-27	9/18/2018 8:53	0.0	7.0	13.9	0	0.07	
GP-29A	9/18/2018 9:00	0.0	2.1	20.0	0	0.07	
GP-29B	9/18/2018 9:01	0.0	0.3	21.0	0	-0.02	
GP-30A	9/18/2018 9:22	0.0	0.6	21.0	0	0.01	
GP-30B	9/18/2018 9:24	0.0	0.1	21.0	0	-0.12	
GP-31A	9/18/2018 9:32	0.0	6.3	15.5	0	0.13	
GP-31B	9/18/2018 9:33	0.0	0.2	19.5	0	-0.03	
GP-31C	9/18/2018 9:34	0.0	1.3	19.3	0	-0.02	
GP-32A	9/18/2018 9:41	0.0	0.2	21.0	0	0.01	
GP-32B	9/18/2018 9:42	0.0	0.2	21.0	0	-0.02	
GP-32C	9/18/2018 9:44	0.0	0.3	21.0	0	0	
GP-33A	9/18/2018 9:49	0.0	2.0	20.0	0	0.05	
GP-33B	9/18/2018 9:48	0.0	0.3	21.0	0	-0.03	
GP-33C	9/18/2018 9:50	0.0	0.1	21.0	0	-0.74	
GP-34A	9/18/2018 9:54	0.0	8.6	12.4	0	-0.14	
GP-34B	9/18/2018 9:56	0.0	0.1	21.0	0	-0.1	
GP-34C	9/18/2018 9:57	0.0	0.1	21.0	0	-1.63	
GP-35A	9/18/2018 10:00	0.0	5.2	17.2	0	0.03	
GP-35B	9/18/2018 10:01	0.0	0.1	21.0	0	0.03	
GP-35C	9/18/2018 10:03	0.0	0.1	21.0	0	0	
GP-36A	9/18/2018 10:07	0.0	0.8	21.0	0	-2.9	
GP-36B	9/18/2018 10:09	0.0	2.7	19.8	0	0.03	
GP-36C	9/18/2018 10:10	0.0	0.2	21.0	0	-0.87	
GP-37A	9/18/2018 10:18	0.0	1.8	19.7	0	-0.02	
GP-37B	9/18/2018 10:19	0.0	0.3	21.0	0	0.06	
GP-37C	9/18/2018 10:20	0.0	0.5	4.0	0	-1.65	
GP-39	9/18/2018 10:27	0.0	0.9	20.3	0	-0.07	
GP-40	9/18/2018 10:30	0.0	0.1	21.0	0	0.04	
GP-41A	9/18/2018 10:33	0.0	3.0	19.5	0	0.06	
GP-41B	9/18/2018 10:35	0.0	0.7	9.2	0	0.06	
GP-41C	9/18/2018 10:36	0.0	0.1	21.0	0	0.03	
GP-42A	9/18/2018 10:40	0.0	3.8	15.9	0	0.04	
GP-42B	9/18/2018 10:41	0.0	0.4	21.0	0	-0.29	
GP-43A	9/18/2018 10:45	0.0	0.5	20.9	0	0.23	
GP-43B	9/18/2018 10:47	0.0	0.1	21.0	0	0.09	
GP-43C	9/18/2018 10:48	0.0	0.1	21.0	0	0.03	
GP-44A	9/18/2018 10:51	0.0	5.7	16.1	0	0.05	
GP-44B	9/18/2018 10:52	0.0	0.1	21.0	0	-0.43	
GP-44C	9/18/2018 10:53	0.0	0.1	21.0	0	0.12	
GP-45D	9/18/2018 12:59	0.0	0.0	21.0	0	-0.09	

CEDAR HILLS REGIONAL LANDFILL
Landfill Gas Compliance Probes
September 2018 Monitoring

Probe ID	Date/Time	CH4 % vol	CO2 % vol2	O2 % vol3	Lower Explosive Limit %LEL	Static Pressure in INWC	Comments
GP-45I	9/18/2018 12:58	0.0	0.0	21.0	0	0.06	
GP-45S	9/18/2018 12:56	0.0	0.1	21.0	0	0.04	

CEDAR HILLS REGIONAL LANDFILL
Landfill Gas Compliance Probes
October 2018 Monitoring

Probe ID	Date/Time	CH4 %vol	CO2 %vol2	O2 %vol3	Lower Explosive Limit %LEL	Static Pressure in INWC	Comments
ATC-1D	10/24/2018 9:24	0	0.1	20.3	0	0	None
ATC-1S	10/24/2018 9:23	0	0.9	20	0	0.02	None
ATC-6D	10/24/2018 10:34	0	0.4	20.3	0	-0.06	None
ATC-6S	10/24/2018 10:33	0	0.7	20.1	0	0.02	None
ATC-8D	10/24/2018 10:25	0	0.9	20	0	0	None
ATC-8S	10/24/2018 10:24	0	0.3	20.3	0	-0.21	None
GP-11A	10/24/2018 9:08	0	0.7	19.7	0	0.09	None
GP-11B	10/24/2018 9:10	0	0.1	20.3	0	-0.22	None
GP-11C	10/24/2018 9:11	0	0.1	20.3	0	-0.12	None
GP-11D	10/24/2018 9:13	0	0.1	20.1	0	-0.13	None
GP-12A	10/24/2018 9:32	0	0.7	20.6	0	-0.03	None
GP-12B	10/24/2018 9:33	0	0.1	21	0	-0.01	None
GP-12C	10/24/2018 9:34	0	0.2	20.1	0	-0.02	None
GP-12D	10/24/2018 9:35	0	0.2	20.7	0	-0.12	None
GP-13A	10/24/2018 9:39	0	0.8	20.6	0	-0.03	None
GP-13B	10/24/2018 9:40	0	0.2	20.3	0	0.03	None
GP-13C	10/24/2018 9:41	0	0.1	21	0	-0.04	None
GP-13D	10/24/2018 9:42	0	0.1	21	0	-0.59	None
GP-14A	10/24/2018 9:48	0	0.1	21	0	-7.00E-02	None
GP-14B	10/24/2018 9:51	0	0.1	20.9	0	-0.08	None
GP-15A	10/24/2018 10:16	0	1.3	19.6	0	-0.02	None
GP-15C	10/24/2018 10:17	0	0.3	19.8	0	-0.02	None
GP-15D	10/24/2018 10:18	0	0.2	20.6	0	-0.02	None
GP-16A	10/24/2018 10:27	0	1.3	19.7	0	-0.02	None
GP-16B	10/24/2018 10:28	0	0.2	20.4	0	-0.75	None
GP-16C	10/24/2018 10:29	0	0.1	20.6	0	-0.49	None
GP-17A	10/24/2018 10:43	0	2.5	18.4	0	0.01	None
GP-17B	10/24/2018 10:44	0	0.6	16.6	0	0.03	None
GP-17C	10/24/2018 10:45	0	0.1	20.6	0	-0.54	None
GP-18A	10/24/2018 10:48	0	2.4	17.8	0	0.13	None
GP-18B	10/24/2018 10:49	0	0.4	16.3	0	0.04	None
GP-18C	10/24/2018 10:51	0	0.2	16.4	0	-0.41	None
GP-19A	10/24/2018 10:53	0	1.2	18	0	0.03	None
GP-19B	10/24/2018 10:55	0	0.6	16.2	0	0.01	None
GP-19C	10/24/2018 10:56	0	0.1	20.5	0	0.03	None
GP-20A	10/24/2018 10:59	0	0.4	20.1	0	0.04	None
GP-20B	10/24/2018 11:00	0	0.2	19.3	0	0	None
GP-20C	10/24/2018 11:01	0	0.2	8.4	0	7.00E-02	None
GP-21A	10/24/2018 11:05	0	0.6	19.5	0	0.04	None
GP-21B	10/24/2018 11:06	0	0.2	11.4	0	7.00E-02	None
GP-21C	10/24/2018 11:07	0	0	0	0	0	NR Flow fail
GP-22A	10/24/2018 11:10	0	2.7	16	0	0.01	None
GP-22C	10/24/2018 11:11	0	1.1	2.4	0	-0.23	None
GP-23A	10/24/2018 11:18	0	0.1	20.6	0	7.00E-02	None
GP-23B	10/24/2018 11:19	0	0.1	20.6	0	0.08	None

CEDAR HILLS REGIONAL LANDFILL
Landfill Gas Compliance Probes
October 2018 Monitoring

Probe ID	Date/Time	CH4 %vol	CO2 %vol2	O2 %vol3	Lower Explosive Limit %LEL	Static Pressure in INWC	Comments
GP-23C	10/24/2018 11:20	0	0.1	20.6	0	0.05	None
GP-24A	10/24/2018 11:23	0	4.3	16.3	0	0.05	None
GP-24B	10/24/2018 11:24	0	0.4	20.2	0	0.02	None
GP-25	10/24/2018 11:26	0	2.6	17	0	0.03	None
GP-26	10/24/2018 11:29	0	0.4	19.6	0	-0.21	None
GP-27	10/24/2018 11:37	0	8.9	9.9	0	7.00E-02	None
GP-29A	10/24/2018 11:41	0	1.8	18.7	0	0.09	None
GP-29B	10/24/2018 11:42	0	0.4	19.7	0	0.04	None
GP-30A	10/24/2018 13:00	0	0.8	19.1	0	0.13	None
GP-30B	10/24/2018 13:02	0	0	20.1	0	0.08	None
GP-31A	10/24/2018 13:06	0	5.9	14.1	0	0.02	None
GP-31B	10/24/2018 13:07	0	0.2	17.7	0	0.02	None
GP-31C	10/24/2018 13:08	0	1.2	17.7	0	0.03	None
GP-32A	10/24/2018 13:11	0	0.4	19.8	0	0.04	None
GP-32B	10/24/2018 13:12	0	0.2	20.1	0	0.01	None
GP-32C	10/24/2018 13:13	0	0.2	20.1	0	-0.02	None
GP-33A	10/24/2018 13:15	0	2.2	17.5	0	0.04	None
GP-33B	10/24/2018 13:16	0	0.5	19.8	0	-0.04	None
GP-33C	10/24/2018 13:18	0	0.1	20.6	0	-0.41	None
GP-34A	10/24/2018 13:20	0	7.8	12.1	0	0.03	None
GP-34B	10/24/2018 13:21	0	0.1	20.6	0	0.01	None
GP-34C	10/24/2018 13:22	0	0.1	19.4	0	-0.27	None
GP-35A	10/24/2018 13:24	0	4.3	16	0	0.04	None
GP-35B	10/24/2018 13:26	0	0.1	20.8	0	-0.01	None
GP-35C	10/24/2018 13:27	0	0.1	20.8	0	0	None
GP-36A	10/24/2018 13:30	0	0.8	20.2	0	-1.25	None
GP-36B	10/24/2018 13:31	0	2.4	18.3	0	0.02	None
GP-36C	10/24/2018 13:32	0	0.3	20.1	0	-0.02	None
GP-37A	10/24/2018 13:35	0	1.8	18	0	0.02	None
GP-37B	10/24/2018 13:36	0	0	0	0	0	NR Flow fail
GP-37C	10/24/2018 13:37	0	0.4	3.5	0	-0.28	None
GP-39	10/24/2018 13:41	0	0.7	18.7	0	0.02	None
GP-40	10/24/2018 13:44	0	0.1	20.5	0	0.02	None
GP-41A	10/24/2018 13:47	0	2.3	18.9	0	0.04	None
GP-41B	10/24/2018 13:48	0	0.6	8.9	0	0	None
GP-41C	10/24/2018 13:49	0	0.1	20.8	0	0.04	None
GP-42A	10/24/2018 13:52	0	3.9	14.7	0	0.05	None
GP-42B	10/24/2018 13:53	0	0.2	20.5	0	0.08	None
GP-43A	10/24/2018 13:56	0	0.1	20.9	0	0.1	None
GP-43B	10/24/2018 13:58	0	0	21	0	0.03	None
GP-43C	10/24/2018 13:59	0	0.1	19.5	0	0.02	None
GP-44A	10/24/2018 14:02	0	7.2	12.3	0	0.02	None

CEDAR HILLS REGIONAL LANDFILL
Landfill Gas Compliance Probes
October 2018 Monitoring

Probe ID	Date/Time	CH4 %vol	CO2 %vol2	O2 %vol3	Lower Explosive Limit %LEL	Static Pressure in INWC	Comments
GP-44B	10/24/2018 14:03	0	3.9	16.5	0	0.06	None
GP-44C	10/24/2018 14:04	0	0.1	21	0	0.05	None
GP-45D	10/24/2018 9:16	0	0.1	20.4	0	0	None
GP-45I	10/24/2018 9:15	0	0.1	20.4	0	7.00E-02	None
GP-45S	10/24/2018 9:14	0	0.1	20.3	0	0.03	None

CEDAR HILLS REGIONAL LANDFILL
Landfill Gas Compliance Probes
November 2018 Monitoring

Probe ID	Date/Time	CH4 %vol	CO2 %vol2	O2 %vol3	Lower Explosive Limit %LEL	Static Pressure in INWC	Comments
ATC-1D	11/20/2018 11:01	0	0.3	11.9	0	0.68	None
ATC-1S	11/20/2018 11:00	0	1.1	18	0	0.06	None
ATC-6D	11/20/2018 12:21	0	0.7	10.7	0	1.08	None
ATC-6S	11/20/2018 12:20	0	1	18.9	0	0	None
ATC-8D	11/20/2018 12:27	0	2.3	17.1	0	0	None
ATC-8S	11/20/2018 12:26	0	0.2	12.4	0	2.44	None
GP-11A	11/20/2018 10:17	0	1	18.8	0	0.06	None
GP-11B	11/20/2018 10:18	0	0.8	12.6	0	0.69	None
GP-11C	11/20/2018 10:19	0	0.1	16.2	0	0.85	None
GP-11D	11/20/2018 10:21	0	0.3	13.1	0	0.17	None
GP-12A	11/20/2018 11:14	0	1.4	18.4	0	0	None
GP-12B	11/20/2018 11:15	0	0	19.8	0	0	None
GP-12C	11/20/2018 11:16	0	0.1	16.6	0	7.6	None
GP-12D	11/20/2018 11:18	0	0.2	17.8	0	3.4	None
GP-13A	11/20/2018 11:06	0	1.1	18.6	0	0	None
GP-13B	11/20/2018 11:07	0	0.4	17.7	0	0.1	None
GP-13C	11/20/2018 11:09	0	0.1	19.2	0	0.1	None
GP-13D	11/20/2018 11:10	0	0.1	18.8	0	2.36	None
GP-14A	11/20/2018 11:24	0	0.1	18.4	0	1.00E+00	None
GP-14B	11/20/2018 11:25	0	0.1	18.6	0	0.69	None
GP-15A	11/20/2018 11:37	0	1.1	19.5	0	-2.03	H2O @34 SECS.
GP-15C	11/20/2018 11:38	0	2.5	4.2	0	0.2	None
GP-15D	11/20/2018 11:39	0	0.1	20	0	-2.35	None
GP-16A	11/20/2018 12:14	0	1.5	18.1	0	0.07	None
GP-16B	11/20/2018 12:16	0	0.2	18.9	0	0.53	None
GP-16C	11/20/2018 12:17	0	0.9	13.4	0	2.96	None
GP-17A	11/20/2018 14:19	0	0	0	0	0	NR H2O
GP-17B	11/20/2018 14:20	0	0.7	13.1	0	0.04	None
GP-17C	11/20/2018 14:22	0	0	19.5	0	3.09	None
GP-18A	11/20/2018 14:25	0	2.3	16.2	0	0.03	None
GP-18B	11/20/2018 14:26	0	0.3	15.8	0	0.17	None
GP-18C	11/20/2018 14:27	0	0.2	14.9	0	3.39	None
GP-19A	11/20/2018 14:30	0	0	19.8	0	0.03	None
GP-19B	11/20/2018 14:31	0	0.6	15.2	0	0.26	None
GP-19C	11/20/2018 14:33	0	0	19.8	0	0.31	None
GP-20A	11/20/2018 14:36	0	1.1	18.4	0	0.06	None
GP-20B	11/20/2018 14:37	0	0.1	18.5	0	0.07	None
GP-20C	11/20/2018 14:38	0	0.2	6.3	0	4.00E-01	None
GP-21A	11/20/2018 14:41	0	0	20	0	0.04	None
GP-21B	11/20/2018 14:42	0	0.1	11.2	0	2.00E-02	None
GP-21C	11/20/2018 14:43	0	0	0	0	0	NR H2O
GP-22A	11/20/2018 14:47	0	0.5	19.2	0	-8.85	None
GP-22C	11/20/2018 14:48	0	1.2	2	0	3.35	None
GP-23A	11/20/2018 15:30	0	0	20.1	0	0.00E+00	None
GP-23B	11/20/2018 15:31	0	0	20.2	0	0.02	None

CEDAR HILLS REGIONAL LANDFILL
Landfill Gas Compliance Probes
November 2018 Monitoring

Probe ID	Date/Time	CH4 %vol	CO2 %vol2	O2 %vol3	Lower Explosive Limit %LEL	Static Pressure in INWC	Comments
GP-23C	11/20/2018 15:32	0	0	20.2	0	-0.22	None
GP-24A	11/20/2018 15:35	0	1.6	16.5	0	0.06	None
GP-24B	11/20/2018 15:37	0	1.1	16.7	0	1.8	None
GP-25	11/20/2018 15:39	0	3.2	14.9	0	0.05	None
GP-26	11/20/2018 15:42	0	0.4	16.5	0	0.84	None
GP-27	11/20/2018 15:45	0	8.5	8.3	0	-2.00E-02	None
GP-29A	11/20/2018 15:49	0	3.9	15.5	0	0.01	None
GP-29B	11/20/2018 15:50	0	0.4	19.5	0	0.17	None
GP-30A	11/20/2018 8:20	0	1.7	18.4	0	0.04	None
GP-30B	11/20/2018 8:21	0	0.9	19	0	0.08	None
GP-31A	11/20/2018 8:24	0	6.2	13.3	0	-0.04	None
GP-31B	11/20/2018 8:25	0	0.3	14.9	0	0.36	None
GP-31C	11/20/2018 8:27	0	1.4	17.3	0	-0.05	None
GP-32A	11/20/2018 8:29	0	0.6	18.8	0	-0.01	None
GP-32B	11/20/2018 8:30	0	0.3	19.6	0	0.03	None
GP-32C	11/20/2018 8:32	0	0.3	19.7	0	-0.03	None
GP-33A	11/20/2018 8:35	0	2.6	16.5	0	-0.03	None
GP-33B	11/20/2018 8:37	0	0.9	18.2	0	0.03	None
GP-33C	11/20/2018 8:38	0	0.1	20	0	-0.02	None
GP-34A	11/20/2018 8:41	0	9	10.6	0	0.04	None
GP-34B	11/20/2018 8:42	0	0.2	19.5	0	0.25	None
GP-34C	11/20/2018 8:43	0	0.1	4.1	0	2.13	None
GP-35A	11/20/2018 8:47	0	7.4	10.2	0	-0.04	None
GP-35B	11/20/2018 8:48	0	0.1	20.1	0	-0.05	None
GP-35C	11/20/2018 8:50	0	0.1	20.3	0	0.02	None
GP-36A	11/20/2018 8:52	0	0.7	15	0	1.46	None
GP-36B	11/20/2018 8:54	0	3	16.3	0	-0.08	None
GP-36C	11/20/2018 8:55	0	0.3	13.3	0	1.37	None
GP-37A	11/20/2018 8:59	0	1.9	17	0	-0.04	None
GP-37B	11/20/2018 9:00	0	0.5	17.8	0	0	None
GP-37C	11/20/2018 9:02	0	0.6	1.9	0	2.49	None
GP-39	11/20/2018 9:07	0	0.6	18.2	0	0.03	None
GP-40	11/20/2018 9:10	0	0.1	19.9	0	0.14	None
GP-41A	11/20/2018 9:13	0	2.7	18.2	0	-0.03	None
GP-41B	11/20/2018 9:14	0	0.8	7.3	0	0.05	None
GP-41C	11/20/2018 9:16	0	0.1	20.7	0	-0.05	None
GP-42A	11/20/2018 9:19	0	0	0	0	0	NR H2O
GP-42B	11/20/2018 9:21	0	0.6	17.2	0	1.02	None
GP-43A	11/20/2018 9:24	0	0.3	18.2	0	-0.08	None
GP-43B	11/20/2018 9:25	0	0.1	20.7	0	-0.04	None
GP-43C	11/20/2018 9:26	0	0.1	19.4	0	0.09	None
GP-44A	11/20/2018 9:29	0	0.4	20.1	0	0.08	None

CEDAR HILLS REGIONAL LANDFILL
Landfill Gas Compliance Probes
November 2018 Monitoring

Probe ID	Date/Time	CH4 %vol	CO2 %vol2	O2 %vol3	Lower Explosive Limit %LEL	Static Pressure in INWC	Comments
GP-44B	11/20/2018 9:31	0	0.9	9.7	0	4.67	None
GP-44C	11/20/2018 9:32	0	0.1	20.1	0	0.01	None
GP-45D	11/20/2018 10:15	0	0.1	18.6	0	0.98	None
GP-45I	11/20/2018 10:13	0	0.1	19.1	0	1.20E-01	None
GP-45S	11/20/2018 10:12	0	0.4	14.5	0	0.06	None

CEDAR HILLS REGIONAL LANDFILL
Landfill Gas Compliance Probes
December 2018 Monitoring

Probe ID	Date/Time	CH4 %vol	CO2 %vol2	O2 %vol3	Lower Explosive Limit %LEL	Static Pressure in INWC	Comments
ATC-1D	12/24/2018 10:27	0	0.2	14.8	0	0.12	None
ATC-1S	12/24/2018 10:26	0	0.1	20.2	0	0.04	None
ATC-6D	12/24/2018 11:13	0	0.9	4.5	0	8.70	None
ATC-6S	12/24/2018 11:12	0	0.2	20.8	0	-0.08	None
ATC-8D	12/24/2018 11:04	0	0.1	21	0	-0.21	None
ATC-8S	12/24/2018 11:02	0	0.2	18.3	0	0.65	None
GP-11A	12/24/2018 10:00	0	0.3	20.2	0	0.02	None
GP-11B	12/24/2018 10:01	0	0.1	20.9	0	0.04	None
GP-11C	12/24/2018 10:03	0	0.1	20.9	0	0.07	None
GP-11D	12/24/2018 10:04	0	0.1	21	0	0.03	None
GP-12A	12/24/2018 10:32	0	0.1	20.7	0	0.01	None
GP-12B	12/24/2018 10:33	0	0.1	20.8	0	0.00	None
GP-12C	12/24/2018 10:34	0	0.1	20.7	0	0.19	None
GP-12D	12/24/2018 10:35	0	0.7	4.7	0	-0.09	None
GP-13A	12/24/2018 10:38	0	0.1	20.7	0	-0.01	None
GP-13B	12/24/2018 10:39	0	0.1	21	0	-0.01	None
GP-13C	12/24/2018 10:40	0	0.1	20.5	0	-0.03	None
GP-13D	12/24/2018 10:42	0	0.1	21	0	-0.42	None
GP-14A	12/24/2018 10:45	0	0.1	21	0	-0.06	None
GP-14B	12/24/2018 10:46	0	0.1	21	0	-0.08	None
GP-15A	12/31/2018 11:26	0	0	0	0	0.00	NR H2O
GP-15C	12/31/2018 11:27	0	0.1	19.7	0	0.09	None
GP-15D	12/31/2018 11:28	0	0.1	19.8	0	0.11	None
GP-16A	12/24/2018 11:06	0	0.1	20.9	0	-0.07	None
GP-16B	12/24/2018 11:07	0	0.1	20.3	0	0.03	None
GP-16C	12/24/2018 11:09	0	0.1	20.9	0	-0.22	None
GP-17A	12/24/2018 12:34	0	0.1	19.2	0	0.07	None
GP-17B	12/24/2018 12:35	0	0.3	17.6	0	0.08	None
GP-17C	12/24/2018 12:36	0	0.1	19.4	0	0.09	None
GP-18A	12/24/2018 12:42	0	0.1	19.6	0	0.08	None
GP-18B	12/24/2018 12:43	0	0.1	19	0	0.10	None
GP-18C	12/24/2018 12:44	0	0.1	19.6	0	0.09	None
GP-19A	12/24/2018 12:46	0	0.1	19.9	0	0.07	None
GP-19B	12/24/2018 12:47	0	0.3	17.8	0	0.10	None
GP-19C	12/24/2018 12:48	0	0.1	20	0	-0.03	None
GP-20A	12/24/2018 12:50	0	0.1	20.1	0	0.07	None
GP-20B	12/24/2018 12:52	0	0.2	16.9	0	0.07	None
GP-20C	12/24/2018 12:53	0	0.1	19.1	0	0.06	None
GP-21A	12/24/2018 12:55	0	0.1	20.2	0	0.05	None
GP-21B	12/24/2018 12:56	0	0.1	13.1	0	0.04	None
GP-21C	12/24/2018 12:57	0	0.1	20.3	0	0.06	None
GP-22A	12/24/2018 13:00	0	0.2	20.3	0	0.29	None
GP-22C	12/24/2018 13:01	0	1.2	3.7	0	1.05	None
GP-23A	12/24/2018 13:04	0	0.1	20.3	0	-0.01	None
GP-23B	12/24/2018 13:05	0	0.1	20.6	0	0.04	None

CEDAR HILLS REGIONAL LANDFILL
Landfill Gas Compliance Probes
December 2018 Monitoring

Probe ID	Date/Time	CH4 %vol	CO2 %vol2	O2 %vol3	Lower Explosive Limit %LEL	Static Pressure in INWC	Comments
GP-23C	12/24/2018 13:06	0	0.1	20.6	0	-0.01	None
GP-24A	12/24/2018 13:09	0	3.9	10.2	0	0.02	None
GP-24B	12/24/2018 13:10	0	2.8	14.2	0	0.01	None
GP-25	12/24/2018 13:12	0	2.8	12.1	0	0.00	None
GP-26	12/24/2018 13:15	0	0.2	20.1	0	0.02	None
GP-27	12/24/2018 13:18	0	5.5	12.1	0	0.00	None
GP-29A	12/24/2018 13:22	0	2.7	16.8	0	0.00	None
GP-29B	12/24/2018 13:23	0	0.3	20.5	0	0.00	None
GP-30A	12/24/2018 8:46	0	2	18.9	0	0.33	None
GP-30B	12/24/2018 8:47	0	0.4	20.4	0	-0.09	None
GP-31A	12/24/2018 8:50	0	4.9	15.5	0	0.97	None
GP-31B	12/24/2018 8:51	0	0.3	16.2	0	0.59	None
GP-31C	12/24/2018 8:52	0	1.4	17.4	0	0.08	None
GP-32A	12/24/2018 8:55	0	1.8	18.2	0	0.11	None
GP-32B	12/24/2018 8:56	0	0.9	19.5	0	0.07	None
GP-32C	12/24/2018 8:57	0	0.7	19.8	0	0.04	None
GP-33A	12/24/2018 8:59	0	0.2	21	0	0.22	None
GP-33B	12/24/2018 9:01	0	0.3	20.3	0	0.76	None
GP-33C	12/24/2018 9:02	0	0.1	21	0	-0.63	None
GP-34A	12/24/2018 9:04	0	0	0	0	0.00	NR H2O
GP-34B	12/24/2018 9:06	0	0.1	21	0	0.03	None
GP-34C	12/24/2018 9:08	0	0.1	21	0	-0.45	None
GP-35A	12/24/2018 9:11	0	0.5	20.1	0	4.34	None
GP-35B	12/24/2018 9:13	0	0.1	17.7	0	-0.04	None
GP-35C	12/24/2018 9:14	0	0.1	21	0	0.01	None
GP-36A	12/24/2018 9:19	0	0.3	13.2	0	0.52	None
GP-36B	12/24/2018 9:21	0	0.1	21	0	0.01	None
GP-36C	12/24/2018 9:22	0	0.1	21	0	0.02	None
GP-37A	12/24/2018 9:24	0	0.1	21	0	-0.01	None
GP-37B	12/24/2018 9:26	0	0.1	20.9	0	0.01	None
GP-37C	12/24/2018 9:27	0	0.1	20.2	0	0.00	None
GP-39	12/24/2018 9:31	0	0.5	18.6	0	0.02	None
GP-40	12/24/2018 9:34	0	0.1	20.8	0	0.00	None
GP-41A	12/24/2018 9:37	0	0.1	20.8	0	0.00	None
GP-41B	12/24/2018 9:38	0	0.1	20.8	0	-0.07	None
GP-41C	12/24/2018 9:40	0	0.1	20.9	0	0.00	None
GP-42A	12/24/2018 9:43	0	0.1	20.8	0	0.01	None
GP-42B	12/24/2018 9:44	0	0.2	20.3	0	0.02	None
GP-43A	12/24/2018 9:47	0	0.1	20.8	0	0.03	None
GP-43B	12/24/2018 9:48	0	0.1	20.9	0	0.03	None
GP-43C	12/24/2018 9:49	0	0.1	20.9	0	0.02	None

CEDAR HILLS REGIONAL LANDFILL
Landfill Gas Compliance Probes
December 2018 Monitoring

Probe ID	Date/Time	CH4 %vol	CO2 %vol2	O2 %vol3	Lower Explosive Limit %LEL	Static Pressure in INWC	Comments
GP-44A	12/24/2018 9:52	0	0.1	20.9	0	0.03	None
GP-44B	12/24/2018 9:54	0	1	8.7	0	6.98	None
GP-44C	12/24/2018 9:55	0	0.1	20.7	0	0.03	None
GP-45D	12/24/2018 10:07	0	0.1	21	0	0.09	None
GP-45I	12/24/2018 10:06	0	0.1	21	0	0.03	None
GP-45S	12/24/2018 10:05	0	0.1	21	0	0.04	None

Interior Probes

CEDAR HILLS REGIONAL LANDFILL
Interior Landfill Gas Probes
January 2018 Monitoring

Probe ID	Date/Time	CH4 %vol	CO2 %vol	O2 %vol	Lower Explosive Limit %LEL	Static Pressure in INWC	Comments
ATC-03D	1/24/2018 9:34	0.0	0.0	0.0	0	-2.4	No Reading, Water
ATC-03S	1/24/2018 9:33	0.0	1.7	14.8	0	3.04	
GP-B4-1	1/16/2018 22:32	0.0	1.5	19.7	0	-2.32	
GP-B4-2	1/16/2018 22:33	0.0	0.1	21.7	0	-0.74	
GP-1A	1/16/2018 21:57	0.0	0.1	21.6	0	-0.01	
GP-1B	1/16/2018 21:59	0.0	0.1	21.6	0	-0.02	
GP-2A	1/16/2018 22:19	0.0	2.9	18.0	0	0.06	
GP-2B	1/16/2018 22:21	0.0	0.1	21.7	0	-0.01	
GP-3	1/16/2018 22:37	0.0	0.9	20.7	0	-0.15	
GP-4A	1/16/2018 22:26	0.0	0.1	21.7	0	-0.01	
GP-4B	1/16/2018 22:27	0.0	0.1	21.7	0	0.04	
GP-5A	1/24/2018 10:12	0.0	0.7	13.4	0	3.27	
GP-5BA	1/24/2018 10:14	0.0	0.0	0.0	0	0	No Reading, Water
GP-5BB	1/24/2018 10:16	0.0	1.7	19.4	0	3.3	
GP-5BC	1/24/2018 10:17	0.0	1.0	13.6	0	3.31	
GP-5BD	1/24/2018 10:19	0.0	1.0	11.9	0	3.29	
GP-6A	1/16/2018 22:05	0.0	0.1	21.6	0	-5.31	
GP-6B	1/16/2018 22:06	0.0	0.1	21.7	0	-1.2	
GP-6C	1/16/2018 22:08	0.0	0.1	21.7	0	-1.1	
GP-6D	1/16/2018 22:09	0.0	0.1	21.7	0	-2.15	
GP-6E	1/16/2018 22:11	0.0	0.1	21.7	0	-1.18	
GP-6F	1/16/2018 22:12	0.0	0.1	21.7	0	-1.15	
GP-6G	1/16/2018 22:13	0.0	0.1	21.7	0	-0.86	
GP-6H	1/16/2018 22:15	0.0	0.1	21.8	0	-2.14	
GP-7	1/16/2018 21:54	0.0	0.1	21.5	0	-1.71	
GP-8	1/16/2018 21:49	0.1	5.6	13.2	2	-1.77	
GP-9	1/16/2018 21:21	0.0	0.1	21.2	0	-2.16	
GP-46D	1/16/2018 22:46	0.0	0.1	21.7	0	-0.43	
GP-46I	1/16/2018 22:44	0.0	0.1	21.7	0	-0.82	
GP-46S	1/16/2018 22:43	0.0	0.1	20.2	0	0.01	
GP-47D	1/24/2018 11:02	0.1	1.3	13.4	2	0.35	
GP-47I	1/24/2018 11:00	27.3	19.2	0.0	546	3.79	
GP-47S	1/24/2018 10:59	50.1	22.5	0.1	1002	4.18	
GP-48D	--	--	--	--	--	--	No Reading
GP-48I	1/16/2018 22:54	0.1	0.2	21.2	2	-0.06	
GP-48S	1/16/2018 22:52	0.0	0.8	17.1	0	0.02	
GP-52	1/24/2018 10:48	0.0	0.1	21.0	0	-0.03	
GP-53	1/24/2018 10:50	0.3	1.0	18.0	6	1.38	
GP-54	1/24/2018 10:52	0.9	9.3	10.9	18	1.6	
GP-55	1/16/2018 21:42	0.1	0.3	21.3	2	-1.87	
GP-56	1/16/2018 21:44	0.1	0.9	21.2	2	0.14	
GP-57	1/16/2018 21:36	46.9	26.9	1.1	938	-18.13	
GP-58	1/16/2018 21:33	1.5	19.7	0.1	30	5.91	
GP-59	1/16/2018 21:26	0.0	0.1	21.3	0	-1.06	
GP-60	1/16/2018 21:28	0.0	0.1	21.3	0	0	
GP-61	1/16/2018 21:10	0.0	0.1	20.8	0	-0.27	
GP-62	1/16/2018 21:08	0.0	1.6	19.5	0	0.01	

CEDAR HILLS REGIONAL LANDFILL
Interior Landfill Gas Probes
February 2018 Monitoring

Probe ID	Date/Time	CH4 %vol	CO2 %vol	O2 %vol	Lower Explosive Limit %LEL	Static Pressure in INWC	Comments
ATC-03D	2/13/2018 14:14	0.0	0.0	0.0	0	0	No Reading, Water
ATC-03S	2/13/2018 14:13	0.0	1.5	14.3	0	-0.04	
GP-B4-1	2/14/2018 21:54	0.0	2.0	19.1	0	-2.64	
GP-B4-2	2/14/2018 21:57	0.0	1.1	20.4	0	-1.45	
GP-1A	2/14/2018 21:04	0.0	0.1	21.0	0	0.08	
GP-1B	2/14/2018 21:06	0.0	0.1	21.0	0	-0.05	
GP-2A	2/14/2018 21:38	0.0	3.4	16.3	0	-0.14	
GP-2B	2/14/2018 21:40	0.0	0.1	21.0	0	-0.11	
GP-3	2/14/2018 22:03	0.0	5.4	14.1	0	-0.24	
GP-4A	2/14/2018 21:47	0.0	0.1	21.0	0	-0.11	
GP-4B	2/14/2018 21:50	0.0	0.1	21.0	0	-0.13	
GP-5A	2/13/2018 14:00	0.0	0.8	11.1	0	-0.68	
GP-5BA	2/13/2018 14:02	0.0	0.0	0.0	0	0	No Reading, Water
GP-5BB	2/13/2018 14:03	0.0	0.1	20.8	0	-0.64	
GP-5BC	2/13/2018 14:05	0.0	0.1	21.0	0	-0.65	
GP-5BD	2/13/2018 14:06	0.0	0.1	21.0	0	-0.22	
GP-6A	2/14/2018 21:13	0.0	0.1	21.0	0	-4.86	
GP-6B	2/14/2018 21:15	0.0	2.8	10.0	0	-1.03	
GP-6C	2/14/2018 21:18	0.0	0.7	17.4	0	-0.97	
GP-6D	2/14/2018 21:21	0.0	0.1	21.0	0	-1.97	
GP-6E	2/14/2018 21:23	0.0	2.7	8.4	0	-1.12	
GP-6F	2/14/2018 21:25	0.0	0.9	16.7	0	-1.07	
GP-6G	2/14/2018 21:27	0.0	0.1	21.0	0	-1.15	
GP-6H	2/14/2018 21:29	0.0	0.1	21.0	0	-2.07	
GP-7	2/14/2018 20:59	0.0	0.1	21.0	0	-1.69	
GP-8	2/14/2018 20:53	0.0	0.1	21.0	0	-1.57	
GP-9	2/14/2018 20:22	0.0	0.1	20.7	0	-1.51	
GP-46D	2/14/2018 22:15	0.0	0.1	21.0	0	-1.6	
GP-46I	2/14/2018 22:15	0.0	0.1	21.0	0	-1.6	
GP-46S	2/14/2018 22:11	0.0	0.2	19.5	0	-0.32	
GP-47D	2/13/2018 12:22	0.1	0.5	18.7	2	0.08	
GP-47I	2/13/2018 12:20	31.4	18.6	0.7	628	0.12	
GP-47S	2/13/2018 12:19	0.0	0.1	20.4	0	0.41	
GP-48D	2/14/2018 22:30	0.0	0.1	21.0	0	-1.26	
GP-48I	2/14/2018 22:28	0.0	0.2	20.7	0	-0.34	
GP-48S	2/14/2018 22:25	0.0	0.6	18.0	0	-0.26	
GP-52	2/13/2018 12:10	0.0	0.1	20.1	0	-0.04	
GP-53	2/13/2018 12:11	0.1	0.5	19.4	2	0.15	
GP-54	2/13/2018 12:12	0.0	0.1	20.3	0	0.05	
GP-55	2/14/2018 20:44	9.6	3.9	14.9	192	-1.64	
GP-56	2/14/2018 20:47	0.1	0.3	21.0	2	-0.01	
GP-57	2/14/2018 20:34	45.9	26.5	1.4	918	-17.73	
GP-58	2/14/2018 20:38	0.0	0.0	0.0	0	0	No Reading, Water
GP-59	2/14/2018 20:27	0.0	0.2	20.8	0	-1.22	
GP-60	2/14/2018 20:29	0.0	0.1	20.9	0	-0.16	
GP-61	2/14/2018 20:13	0.0	0.1	20.6	0	0	
GP-62	2/14/2018 20:15	0.0	1.5	19.4	0	0.06	

CEDAR HILLS REGIONAL LANDFILL
Interior Landfill Gas Probes
March 2018 Monitoring

Probe ID	Date/Time	CH4 %vol	CO2 %vol	O2 %vol	Lower Explosive Limit %LEL	Static Pressure in INWC	Comments
ATC-03D	3/21/2018 13:42	0.0	0.0	0.0	0	0	No Reading, Water
ATC-03S	3/21/2018 13:40	0.0	1.5	10.4	0	0.09	
GP-B4-1	3/7/2018 21:05	0.0	2.3	18.6	0	1.77	
GP-B4-2	3/7/2018 21:06	0.0	2.8	18.9	0	2.35	
GP-1A	3/7/2018 20:32	0.0	0.1	21.4	0	-0.13	
GP-1B	3/7/2018 20:34	0.0	0.1	21.5	0	-0.05	
GP-2A	3/7/2018 20:52	0.0	3.8	13.5	0	-0.01	
GP-2B	3/7/2018 20:53	0.0	0.1	21.5	0	-0.03	
GP-3	3/7/2018 21:09	0.0	5.1	13.6	0	-0.07	
GP-4A	3/7/2018 21:00	0.0	0.1	21.5	0	-0.05	
GP-4B	3/7/2018 21:01	0.0	0.1	21.5	0	0.03	
GP-5A	3/21/2018 13:55	0.0	0.5	13.1	0	3.06	
GP-5BA	3/21/2018 13:56	0.0	0.0	0.0	0	0	No Reading, Water
GP-5BB	3/21/2018 13:57	0.0	1.2	18.0	0	3.19	
GP-5BC	3/21/2018 13:59	0.0	0.6	14.6	0	3.2	
GP-5BD	3/21/2018 14:00	0.0	0.9	10.8	0	3.52	
GP-6A	3/7/2018 20:38	0.0	0.1	21.4	0	-1.77	
GP-6B	3/7/2018 20:39	0.0	0.1	21.5	0	2.46	
GP-6C	3/7/2018 20:41	0.0	0.8	16.5	0	2.43	
GP-6D	3/7/2018 20:42	0.0	0.1	21.4	0	1.64	
GP-6E	3/7/2018 20:44	0.0	0.1	21.5	0	2.51	
GP-6F	3/7/2018 20:45	0.0	0.1	21.6	0	2.33	
GP-6G	3/7/2018 20:47	0.0	1.5	13.3	0	2.43	
GP-6H	3/7/2018 20:49	0.0	5.2	0.3	0	1.61	
GP-7	3/7/2018 20:29	0.0	1.9	18.6	0	2.15	
GP-8	3/7/2018 20:25	0.0	0.7	19.5	0	2.11	
GP-9	3/7/2018 19:59	0.0	0.1	20.7	0	2.3	
GP-46D	3/7/2018 21:18	0.0	0.1	21.5	0	2.36	
GP-46I	3/7/2018 21:17	0.0	0.1	21.5	0	2.65	
GP-46S	3/7/2018 21:15	0.0	0.1	20.1	0	-0.05	
GP-47D	3/21/2018 10:17	0.0	2.3	13.8	0	-0.02	
GP-47I	3/21/2018 10:16	19.5	13.2	5.5	390	3.53	
GP-47S	3/21/2018 10:14	37.5	21.9	0.0	750	4.15	
GP-48D	3/7/2018 21:30	0.7	6.1	18.1	14	1.41	
GP-48I	3/7/2018 21:28	0.0	0.2	21.1	0	-0.11	
GP-48S	3/7/2018 21:28	0.0	0.2	21.1	0	-0.11	
GP-52	3/21/2018 10:04	0.0	0.1	20.4	0	0	
GP-53	3/21/2018 10:05	0.0	0.5	18.6	0	1.4	
GP-54	3/21/2018 10:07	0.0	6.9	12.7	0	1.78	
GP-55	3/7/2018 20:18	27.9	4.9	8.8	558	2.26	
GP-56	3/7/2018 20:20	0.0	0.6	21.1	0	0	
GP-57	3/7/2018 20:09	46.6	29.9	1.9	932	-16.14	
GP-58	3/7/2018 20:14	0.0	1.0	21.0	0	-17.71	
GP-59	3/7/2018 20:03	8.9	2.4	14.4	178	1.71	
GP-60	3/7/2018 20:06	0.0	0.1	20.9	0	-0.02	
GP-61	3/7/2018 19:50	0.0	0.5	20.1	0	0.39	
GP-62	3/7/2018 19:53	0.0	1.5	19.6	0	0.01	

CEDAR HILLS REGIONAL LANDFILL
Landfill Gas Interior Probes
April 2018 Monitoring

Probe ID	Date/Time	CH4 % vol	CO2 %vol2	O2 %vol3	Lower Explosive Limit %LEL	Static Pressure in INWC	Comments
ATC-03D	4/23/2018 13:09	0.0	0.0	0.0	0	-5.4	No Reading, Water
ATC-03S	4/23/2018 13:08	0.0	1.5	10.2	0	-3.18	
GP-1A	4/18/2018 21:29	0	0.1	21	0	-0.02	No Reading, Water
GP-1B	4/18/2018 21:31	0	0.1	21	0	-0.01	
GP-2A	4/18/2018 10:30 P.	0	1.6	20.3	0	-0.73	
GP-2B	4/18/2018 22:02	0	0.1	21	0	-0.04	
GP-3	4/18/2018 22:24	0	0	0	0	-0.91	
GP-46D	4/18/2018 22:41	0	0.1	21	0	-1.64	
GP-46I	4/18/2018 22:39	0	0.1	21	0	-1.43	
GP-46S	4/18/2018 22:37	0	0.1	21	0	-0.09	
GP-47D	4/23/2018 14:04	0.0	0.4	19.0	0	0.04	
GP-47I	4/23/2018 14:03	29.2	16.4	2.7	>>>>	-0.28	
GP-47S	4/23/2018 14:01	0.0	0.0	21.0	0	0.07	
GP-48D	4/18/2018 22:56	0	0.1	21	0	-2.55	
GP-48I	4/18/2018 22:54	0	0.2	21	0	-0.16	
GP-48S	4/18/2018 22:52	0	0.3	19.4	0	-0.11	
GP-4A	4/18/2018 22:09	0	0.1	21	0	-0.08	
GP-4B	4/18/2018 22:12	0	0.1	21	0	-0.05	
GP-52	4/23/2018 14:09	0.0	0.1	20.7	0	0.42	
GP-53	4/23/2018 14:11	0.0	0.2	20.5	0	0.44	
GP-54	4/23/2018 14:12	0.0	0.1	21.0	0	0.2	
GP-55	4/18/2018 21:05	0	0.1	21	0	-2.58	
GP-56	4/18/2018 21:07	0	0.1	21	0	-0.11	
GP-57	4/18/2018 20:56	44	25.2	3.1	>>>>	-17.98	
GP-58	4/18/2018 20:58	0	0	0	0	-26.28	No Reading, Water
GP-59	4/18/2018 20:47	0	0.1	21	0	-1.3	
GP-5A	4/23/2018 13:50	0.0	0.0	21.0	0	-2.91	No Reading, Water
GP-5BA	4/23/2018 13:55	0.0	0.0	0.0	0	-25.68	
GP-5BB	4/23/2018 13:52	0.0	0.1	21.0	0	-2.86	
GP-5BC	4/23/2018 13:53	0.0	0.1	21.0	0	-2.9	
GP-5BD	4/23/2018 13:54	0.0	0.1	21.0	0	-1.94	
GP-60	4/18/2018 20:50	0	0.1	21	0	-0.02	
GP-61	4/18/2018 20:29	0	0.1	20.9	0	-0.99	
GP-62	4/18/2018 20:32	0	1.5	19.8	0	0	
GP-6A	4/18/2018 21:37	0	0.1	21	0	-7.23	
GP-6B	4/18/2018 21:39	0	0.1	21	0	-2.68	
GP-6C	4/18/2018 21:42	0	0.1	21	0	-2.61	
GP-6D	4/18/2018 21:44	0	0.1	21	0	-3.61	
GP-6E	4/18/2018 21:46	0	0.1	21	0	-2.71	
GP-6F	4/18/2018 21:49	0	0.1	21	0	-2.71	
GP-6G	4/18/2018 21:51	0	0.1	21	0	-2.69	
GP-6H	4/18/2018 21:53	0	0.1	21	0	-3.65	
GP-7	4/18/2018 21:23	0	0.1	21	0	-2.74	
GP-8	4/18/2018 21:14	0	0.1	21	0	-2.71	
GP-9	4/18/2018 20:40	0	0.1	21	0	-2.58	
GP-B4-1	4/18/2018 22:17	0	2.3	18.9	0	-3.56	
GP-B4-2	4/18/2018 22:19	0	0.1	21	0	-2.27	

CEDAR HILLS REGIONAL LANDFILL
Landfill Gas Interior Probes
May 2018 Monitoring

Probe ID	Date/Time	CH4 % vol	CO2 % vol2	O2 % vol3	Lower Explosive Limit %LEL	Static Pressure in INWC	Comments
ATC-03D	5/22/2018 11:24	0	0.5	20.2	0	0.04	
ATC-03S	5/22/2018 11:23	0	0.8	19.9	0	0.1	
GP-1A	5/20/2018 22:13	0	4.6	14.6	0	0.03	
GP-1B	5/20/2018 22:15	0	0.2	21.2	0	0.03	
GP-2A	5/20/2018 21:29	0	6.5	11.9	0	0	
GP-2B	5/20/2018 21:31	0	0.1	21.1	0	0.02	
GP-3	5/20/2018 21:44	0	11.4	11.4	0	-0.01	
GP-46D	5/20/2018 21:58	0.1	0.1	21.2	2	-0.46	
GP-46I	5/20/2018 21:56	14.9	1.8	0.1	>>>>	-1.11	
GP-46S	5/20/2018 21:52	0	0.1	20.2	0	-0.07	
GP-47D	5/22/2018 12:14	0	0.6	18.3	0	0.16	
GP-47I	5/22/2018 12:12	41.7	22.4	0.2	>>>>	1.99	
GP-47S	5/22/2018 12:10	74.5	25.2	0.2	>>>>	3.67	
GP-48D	5/20/2018 22:07	0	0	21.4	0	-0.43	
GP-48I	5/20/2018 22:05	0	0.1	21.4	0	-0.01	
GP-48S	5/20/2018 22:04	0	0.3	18.9	0	-0.02	
GP-4A	5/20/2018 21:36	0	0.1	21.3	0	0.05	
GP-4B	5/20/2018 21:37	0	0.1	21.2	0	-0.02	
GP-52	5/22/2018 12:20	0	1.5	17.9	0	0.12	
GP-53	5/22/2018 12:22	0	0.3	18.9	0	0.55	
GP-54	5/22/2018 12:23	0	4.1	14.5	0	0.56	
GP-55	5/20/2018 21:03	0	0.1	21	0	-0.64	
GP-56	5/20/2018 21:06	0	1.2	17.1	0	-0.09	
GP-57	5/20/2018 20:56	40.5	25.4	2.1	>>>>	-11.71	
GP-58	5/20/2018 20:58	0.2	8.1	18.3	4	-54.48	
GP-59	5/20/2018 20:50	0	0.1	20.9	0	-0.27	
GP-5A	5/22/2018 11:55	0	0	20.3	0	0.52	
GP-5BA	5/22/2018 11:57	0	0.2	20.3	0	-4.58	Water @ 45 SECS.
GP-5BB	5/22/2018 11:59	0	0.1	20.4	0	0.53	
GP-5BC	5/22/2018 12:00	0	0.1	20.4	0	0.49	
GP-5BD	5/22/2018 12:01	0	0.1	20.4	0	0.68	
GP-60	5/20/2018 20:53	0	0.1	20.9	0	-0.02	
GP-61	5/20/2018 20:27	0.3	0.1	20.4	6	-0.03	
GP-62	5/20/2018 20:34	0.3	2.3	18.6	6	-0.01	
GP-6A	5/20/2018 21:14	0	0.1	21.1	0	-3.73	
GP-6B	5/20/2018 21:16	0	0.1	21.2	0	-0.51	
GP-6C	5/20/2018 21:17	0	0.1	21.2	0	-0.51	
GP-6D	5/20/2018 21:19	0	0.1	21.2	0	-1.14	
GP-6E	5/20/2018 21:20	0	0.1	21.2	0	-0.46	
GP-6F	5/20/2018 21:22	0	0.1	21.2	0	-0.51	
GP-6G	5/20/2018 21:23	0	0	21.2	0	-0.53	
GP-6H	5/20/2018 21:25	0	0.1	21.2	0	-1.17	
GP-7	5/20/2018 21:10	0	0.1	21.1	0	-0.52	
GP-8	5/20/2018 20:45	0	0.1	20.8	0	-0.64	
GP-9	5/20/2018 20:42	0	0.1	20.7	0	-0.65	
GP-B4-1	5/20/2018 21:40	0	2.5	18.1	0	-1.27	
GP-B4-2	5/20/2018 21:42	0	0.1	21.3	0	-0.56	

CEDAR HILLS REGIONAL LANDFILL
Landfill Gas Interior Probes
June 2018 Monitoring

Probe ID	Date/Time	CH4 % vol	CO2 % vol2	O2 % vol3	Lower Explosive Limit %LEL	Static Pressure in INWC	Comments
ATC-3D	6/19/2018 14:28	0.2	8.5	11.9	4	0.16	
ATC-3S	6/19/2018 14:26	0	1.5	19.4	0	0.16	
GP-1A	6/6/2018 22:44	0	4.8	16.1	0	-0.03	
GP-1B	6/6/2018 22:47	0	0.1	21	0	-0.04	
GP-2A	6/6/2018 23:13	0	0	21	0	-0.03	
GP-2B	6/6/2018 23:15	0	6.8	10.6	0	-0.07	
GP-3	6/6/2018 23:37	0	9.2	15.3	0	-0.05	
GP-46D	6/6/2018 23:48	0	0.1	21	0	0.53	
GP-46I	6/6/2018 23:46	15.5	1.5	2.5	>>>>	1.46	
GP-46S	6/6/2018 23:44	0	0.1	19.8	0	-0.08	
GP-47D	6/19/2018 7:53	0	0.4	18.8	0	-0.11	
GP-47I	6/19/2018 7:52	20.8	15.3	5	>>>>	-1.44	
GP-47S	6/19/2018 7:50	0	0.1	20.9	0	-1.26	
GP-48D	6/7/2018 0:00	5.7	10.2	0.2	>>>>	1.06	
GP-48I	6/6/2018 23:58	0	0.2	21	0	-0.16	
GP-48S	6/6/2018 23:56	0	0.5	17.4	0	-0.13	
GP-4A	6/6/2018 23:23	0	8.5	6.5	0	-0.15	
GP-4B	6/6/2018 23:25	0	0.1	21	0	-0.03	
GP-52	6/19/2018 7:41	0	0.6	20	0	-0.04	
GP-53	6/19/2018 7:42	0.2	0.4	19.2	4	-0.2	
GP-54	6/19/2018 7:44	0	0.1	21	0	-0.72	
GP-55	6/6/2018 22:20	26.5	9.6	3.9	>>>>	1.13	
GP-56	6/6/2018 22:22	0.1	1.6	18.2	2	-0.23	
GP-57	6/6/2018 22:11	45.7	26.2	1.8	>>>>	-10.68	
GP-58	6/6/2018 22:13	2.8	30.6	0	56	-1.4	
GP-59	6/6/2018 22:01	17.6	5.4	9.3	>>>>	0.97	
GP-5A	6/19/2018 14:14	0	0	20.8	0	-1.6	
GP-5BA	6/19/2018 14:18	0	0	0	0	0	No Reading, Water
GP-5BB	6/19/2018 14:19	0	0	20.7	0	-1.62	
GP-5BC	6/19/2018 14:20	0	0	20.7	0	-1.59	
GP-5BD	6/19/2018 14:21	0	0	20.8	0	-1.46	
GP-60	6/6/2018 22:04	0	0.1	20.8	0	-0.02	
GP-61	6/6/2018 21:41	0	0.7	20.2	0	0.76	
GP-62	6/6/2018 21:44	0	2.2	18.9	0	0.04	
GP-6A	6/6/2018 22:52	0	0.1	21	0	-1.21	
GP-6B	6/6/2018 22:54	0	2.7	8.5	0	1.46	
GP-6C	6/6/2018 22:55	0	0.1	21	0	1.47	
GP-6D	6/6/2018 22:57	0	0.3	18.9	0	0.87	
GP-6E	6/6/2018 22:59	0	0.1	20.8	0	1.41	
GP-6F	6/6/2018 23:01	0	0.1	21	0	1.52	
GP-6G	6/6/2018 23:03	0	1.5	11.5	0	1.43	
GP-6H	6/6/2018 23:05	0	0.6	17.6	0	0.65	
GP-7	6/6/2018 22:38	0	2.7	15	0	1	
GP-8	6/6/2018 22:31	0	1.9	15	0	0.96	
GP-9	6/6/2018 21:54	0	0.1	20.8	0	1.2	
GP-B4-1	6/6/2018 23:31	0	2.7	18	0	0.51	
GP-B4-2	6/6/2018 23:33	0	2.6	18.8	0	0.89	

CEDAR HILLS REGIONAL LANDFILL
Landfill Gas Interior Probes
July 2018 Monitoring

Probe ID	Date/Time	CH4 %vol	CO2 %vol2	O2 %vol3	Lower Explosive Limit %LEL	Static Pressure in INWC	Comments
ATC-03D	7/24/2018 14:12	0.0	5.4	14.5	0	0.05	
ATC-03S	7/24/2018 14:11	0.0	0.6	18.6	0	-0.06	
GP-1A	7/24/2018 20:43	0	4.7	17.4	0	0.08	
GP-1B	7/24/2018 20:45	0	0.1	21.1	0	0.06	
GP-2A	7/24/2018 21:04	0	6	13.9	0	0.09	
GP-2B	7/24/2018 21:06	0	0.1	21.4	0	0.11	
GP-3	7/24/2018 21:22	0	12.6	12.5	0	0.07	
GP-46D	7/24/2018 21:30	0	0.1	21.9	0	-0.05	
GP-46I	7/24/2018 21:28	0	0.1	21.9	0	-0.14	
GP-46S	7/24/2018 21:27	0	0.1	21	0	0.01	
GP-47D	7/25/2018 13:33	0.0	0.1	17.4	0	0.4	
GP-47I	7/25/2018 13:32	0.0	0.8	17.9	0	-0.44	
GP-47S	7/25/2018 13:31	0.0	0.0	18.9	0	-0.01	
GP-48D	7/24/2018 21:40	0	0.1	21.9	0	0.08	
GP-48I	7/24/2018 21:38	0	0.1	21.8	0	-0.01	
GP-48S	7/24/2018 21:37	0	0.2	20.4	0	0.04	
GP-4A	7/24/2018 21:11	0	12	10.8	0	0.1	
GP-4B	7/24/2018 21:12	0	0.1	21.7	0	0.1	
GP-52	7/25/2018 13:39	0.0	2.2	13.6	0	0.12	
GP-53	7/25/2018 13:40	0.0	0.1	18.3	0	0	
GP-54	7/25/2018 13:41	0.0	0.0	18.9	0	-0.09	
GP-55	7/24/2018 20:34	0	0.3	20.4	0	-0.01	
GP-56	7/24/2018 20:36	0	1.9	17.1	0	0.09	
GP-57	7/24/2018 20:29	45.8	25.4	1.8	>>>>	-9.59	
GP-58	7/24/2018 20:30	0.6	26.8	0	12	0.04	
GP-59	7/24/2018 20:23	0	0.2	20.5	0	0.1	
GP-5A	7/24/2018 14:00	0.0	0.0	19.4	0	-0.87	
GP-5BA	7/24/2018 14:01	0.0	0.1	19.2	0	0.24	
GP-5BB	7/24/2018 14:03	0.0	0.0	19.4	0	-0.83	
GP-5BC	7/24/2018 14:04	0.0	0.0	19.4	0	-0.86	
GP-5BD	7/24/2018 14:05	0.0	0.8	19.2	0	-0.72	
GP-60	7/24/2018 20:25	0	0.1	20.7	0	0.05	
GP-61	7/24/2018 20:06	0	0.1	20.6	0	0.04	
GP-62	7/24/2018 20:08	0	1.7	19.3	0	0.04	
GP-6A	7/24/2018 20:49	0	0.1	21.2	0	-1.32	
GP-6B	7/24/2018 20:50	0	0.1	21.2	0	0.11	
GP-6C	7/24/2018 20:52	0	3.6	18.3	0	0.08	
GP-6D	7/24/2018 20:53	0	0.1	21.3	0	-0.31	
GP-6E	7/24/2018 20:56	0	0.1	21.3	0	0.13	
GP-6F	7/24/2018 20:57	0	0.1	21.4	0	0.12	
GP-6G	7/24/2018 20:59	0	0.1	21.5	0	0.12	
GP-6H	7/24/2018 21:00	0	0.1	21.5	0	-0.35	
GP-7	7/24/2018 20:41	0	0.1	20.8	0	0.01	
GP-8	7/24/2018 20:14	0	0.1	20.7	0	-0.03	
GP-9	7/24/2018 20:17	0	0.1	20.6	0	-0.12	

CEDAR HILLS REGIONAL LANDFILL
Landfill Gas Interior Probes
July 2018 Monitoring

Probe ID	Date/Time	CH4 %vol	CO2 %vol2	O2 %vol3	Lower Explosive Limit %LEL	Static Pressure in INWC	Comments
GP-B4-1	7/24/2018 21:15	0	0.1	21.7	0	-0.51	
GP-B4-2	7/24/2018 21:17	0	0.1	21.6	0	0.06	

CEDAR HILLS REGIONAL LANDFILL
Landfill Gas Interior Probes
August 2018 Monitoring

Probe ID	Date/Time	CH4 %vol	CO2 %vol2	O2 %vol3	Lower Explosive Limit %LEL	Static Pressure in INWC	Comments
ATC-03D	8/14/2018 13:15	0.0	6.0	15.4	0	0.1	
ATC-03S	8/14/2018 13:14	0.0	0.5	20.7	0	0.24	
GP-1A	8/15/2018 22:35	0	4.3	17.3	0	0.08	
GP-1B	8/15/2018 22:38	0	0.1	20.6	0	0.1	
GP-2A	8/15/2018 23:56	0	5.7	13.9	0	-0.27	
GP-2B	8/15/2018 23:59	0	0.2	21	0	0.03	
GP-3	8/15/2018 23:23	0	12.5	12.3	0	0.07	
GP-46D	8/15/2018 23:32	0	0.1	21	0	-0.33	
GP-46I	8/15/2018 23:30	0.3	0.1	20.9	6	0.04	
GP-46S	8/15/2018 23:28	0	0.1	20.8	0	-0.07	
GP-47D	8/14/2018 14:03	0.0	0.2	20.9	0	0.22	
GP-47I	8/14/2018 14:02	0.5	2.0	18.2	10	1.94	
GP-47S	8/14/2018 14:01	45.8	21.3	0.2	>>>>	2.27	
GP-48D	8/15/2018 23:43	10.4	9.6	0.9	208	0.25	
GP-48I	8/15/2018 23:40	0	0.1	21	0	-0.05	
GP-48S	8/15/2018 23:39	0	0.1	21	0	-0.04	
GP-4A	8/15/2018 23:09	0	8	13.9	0	0.04	
GP-4B	8/15/2018 23:12	0	0.1	21	0	0.06	
GP-52	8/14/2018 14:09	0.0	2.4	15.7	0	0.25	
GP-53	8/14/2018 14:11	0.0	0.2	20.0	0	0.3	
GP-54	8/14/2018 14:12	0.0	4.2	14.5	0	0.94	
GP-55	8/15/2018 21:57	31.5	11.7	0	630	0.05	
GP-56	8/15/2018 21:59	0	2.3	18.1	0	-0.19	
GP-57	8/15/2018 21:48	48.8	26.3	1.2	976	-8.25	
GP-58	8/15/2018 21:50	0	19.7	1.9	0	0.04	
GP-59	8/15/2018 21:32	18.8	6	8.1	376	0.11	
GP-5A	8/14/2018 13:47	0.0	0.0	21.5	0	1.02	
GP-5BA	8/14/2018 13:49	0.0	0.1	21.0	0	0.31	
GP-5BB	8/14/2018 13:50	0.0	0.2	21.0	0	1.06	
GP-5BC	8/14/2018 13:51	0.0	0.3	21.0	0	0.97	
GP-5BD	8/14/2018 13:52	0.0	0.9	13.5	0	1.16	
GP-60	8/15/2018 21:34	0	0.1	20.4	0	-0.15	
GP-61	8/15/2018 21:23	0	1.8	19.3	0	0.29	
GP-62	8/15/2018 21:25	0	1.5	19.5	0	0.04	
GP-6A	8/15/2018 22:44	0	0.1	20.6	0	-0.7	
GP-6B	8/15/2018 22:46	0	3.7	4.9	0	0.19	
GP-6C	8/15/2018 22:48	0	0.8	15.7	0	0.22	
GP-6D	8/15/2018 22:51	0	4.5	0.3	0	-0.13	
GP-6E	8/15/2018 22:53	0	0.2	19.9	0	0.26	
GP-6F	8/15/2018 22:55	0	0.1	20.9	0	0.29	
GP-6G	8/15/2018 22:57	0	1.4	11.5	0	0.28	
GP-6H	8/15/2018 22:58	0	4.5	0.3	0	0.03	
GP-7	8/15/2018 22:26	0	3.3	10.8	0	-0.12	
GP-8	8/15/2018 22:21	0	0	20.6	0	-0.06	
GP-9	8/15/2018 22:12	0	0.1	20.4	0	-0.1	

**CEDAR HILLS REGIONAL LANDFILL
Landfill Gas Interior Probes
August 2018 Monitoring**

Probe ID	Date/Time	CH4 %vol	CO2 %vol2	O2 %vol3	Lower Explosive Limit %LEL	Static Pressure in INWC	Comments
GP-B4-1	8/15/2018 23:17	0	0.1	21	0	-0.56	
GP-B4-2	8/15/2018 23:19	0	2.4	18.9	0	0.03	

CEDAR HILLS REGIONAL LANDFILL
Landfill Gas Interior Probes
September 2018 Monitoring

Probe ID	Date/Time	CH4 %vol	CO2 %vol2	O2 %vol3	Lower Explosive Limit %LEL	Static Pressure in INWC	Comments
ATC-03D	9/18/2018 13:52	0.0	10.3	11.3	0	0.04	
ATC-03S	9/18/2018 13:50	0.0	0.9	21.0	0	-0.26	
GP-1A	9/12/2018 21:51	0	1.9	20.4	0	0.02	
GP-1B	9/12/2018 21:52	0	0.1	22	0	-0.02	
GP-2A	9/12/2018 22:10	0	6	14	0	0.01	
GP-2B	9/12/2018 22:11	0	0.2	22.1	0	0.05	
GP-3	9/12/2018 22:28	0	16.1	8.6	0	0.01	
GP-46D	9/12/2018 22:36	0	0.1	22.4	0	0.02	
GP-46I	9/12/2018 22:34	0	0.1	22.3	0	-0.31	
GP-46S	9/12/2018 22:33	0	0.1	21.8	0	0.03	
GP-47D	9/18/2018 11:21	0.0	0.3	21.0	0	-0.56	
GP-47I	9/18/2018 11:19	0.0	5.8	13.3	0	-1.19	
GP-47S	9/18/2018 11:18	0.0	0.1	21.0	0	-0.73	
GP-48D	9/12/2018 22:46	6.8	8.8	3.5	>>>>	0.11	
GP-48I	9/12/2018 22:45	0	0.1	22.3	0	0.01	
GP-48S	9/12/2018 22:43	0	0.1	22.2	0	-0.02	
GP-4A	9/12/2018 22:18	0	11.5	11.7	0	0.01	
GP-4B	9/12/2018 22:19	0	0.1	22.3	0	0.08	
GP-52	9/18/2018 11:11	0.0	0.7	20.9	0	0.1	
GP-53	9/18/2018 11:12	0.1	0.5	19.5	2	-0.11	
GP-54	9/18/2018 11:14	0.0	0.1	21.0	0	-0.07	
GP-55	9/12/2018 21:35	47.4	15.8	0	>>>>	0.06	
GP-56	9/12/2018 21:37	0	2.2	20.1	0	0.05	
GP-57	9/12/2018 21:28	49.7	26.9	0.6	>>>>	-2.15	
GP-58	9/12/2018 21:31	0	13.4	9.1	0	0.02	
GP-59	9/12/2018 21:22	21	6.8	7.1	>>>>	0.31	
GP-5A	9/12/2018 21:24	0.0	0.2	21.6	0	0.02	
GP-5BA	9/18/2018 14:27	0.0	0.2	21.0	0	0.19	
GP-5BB	9/18/2018 14:28	0.0	0.1	21.0	0	-2.07	
GP-5BC	9/18/2018 14:29	0.0	0.1	21.0	0	-2.06	
GP-5BD	9/18/2018 14:31	0.0	1.1	21.0	0	-1.61	
GP-60	9/12/2018 21:24	0	0.2	21.6	0	0.02	
GP-61	9/12/2018 21:08	0	1.5	20.1	0	0.1	
GP-62	9/12/2018 21:10	0	1.7	19.9	0	0.03	
GP-6A	9/12/2018 21:56	0	0.1	22	0	-0.58	
GP-6B	9/12/2018 21:58	0	0.9	17.3	0	0.29	
GP-6C	9/12/2018 21:59	0	0.7	16.9	0	0.35	
GP-6D	9/12/2018 22:01	0	0.1	21.9	0	0.25	
GP-6E	9/12/2018 22:02	0	0.2	21.6	0	0.37	
GP-6F	9/12/2018 22:04	0	0.2	22	0	0.34	
GP-6G	9/12/2018 22:05	0	1.3	12	0	0.33	
GP-6H	9/12/2018 22:06	0	0.2	21.6	0	0.11	
GP-7	9/12/2018 21:47	0	0.7	19.4	0	0.01	
GP-8	9/12/2018 21:43	0	0.9	17	0	0.23	
GP-9	9/12/2018 21:15	0	0.1	21.5	0	0.07	

CEDAR HILLS REGIONAL LANDFILL
Landfill Gas Interior Probes
September 2018 Monitoring

Probe ID	Date/Time	CH4 %vol	CO2 %vol2	O2 %vol3	Lower Explosive Limit %LEL	Static Pressure in INWC	Comments
GP-B4-1	9/12/2018 22:24	0	0.1	22.3	0	0.06	
GP-B4-2	9/12/2018 22:25	0	2.2	19.7	0	0.18	

CEDAR HILLS REGIONAL LANDFILL
Landfill Gas Compliance Probes
October 2018 Monitoring

Probe ID	Date/Time	CH4 %vol	CO2 %vol2	O2 %vol3	Lower Explosive Limit %LEL	Static Pressure in INWC	Comments
ATC-03D	10/24/2018 10:11	0	0.5	16.5	0	-0.07	None
ATC-03S	10/24/2018 10:09	0	1	19.9	0	-0.05	None
GP-1A	10/17/2018 22:30	0	0.5	20.7	0	-0.07	None
GP-1B	10/17/2018 22:32	0	0.3	21	0	-0.08	None
GP-2A	10/17/2018 23:06	0	7	10.9	0	-0.1	None
GP-2B	10/17/2018 23:08	0	0.1	21	0	-0.12	None
GP-3	10/17/2018 23:30	0	13.9	8.9	0	-0.18	None
GP-46D	10/17/2018 23:39	0	0.1	21	0	0.29	None
GP-46I	10/17/2018 23:37	0	0.1	21	0	-1.33	None
GP-46S	10/17/2018 23:35	0	0.1	21	0	-0.18	None
GP-47D	10/24/2018 14:21	0	0.8	19.7	0	0.03	None
GP-47I	10/24/2018 14:20	24.4	17.4	1.9	4.88	0.35	None
GP-47S	10/24/2018 14:18	0	0.1	21	0	0.1	None
GP-48D	10/17/2018 23:52	0.6	9.4	1.3	0.12	0.58	None
GP-48I	10/17/2018 23:50	0	0.1	21	0	-0.14	None
GP-48S	10/17/2018 23:49	0	0.1	21	0	-0.15	None
GP-4A	10/17/2018 23:17	0	0.1	21	0	0.01	None
GP-4B	10/17/2018 23:19	0	0.1	21	0	-0.1	None
GP-52	10/24/2018 14:11	0	0.1	21	0	5.00E-02	None
GP-53	10/24/2018 14:12	0	0.3	19.6	0	0.05	None
GP-54	10/24/2018 14:13	0	0.1	21	0	0.02	None
GP-55	10/17/2018 22:10	55.1	15.6	0.6	11.02	0.82	None
GP-56	10/17/2018 22:08	0	2.5	18	0	-0.08	None
GP-57	10/17/2018 22:01	43.9	24.3	3.3	8.78	-10.75	None
GP-58	10/17/2018 21:58	0	13.8	7.3	0	-0.09	None
GP-59	10/17/2018 21:52	6.7	2.1	14	1.34	0.69	None
GP-5A	10/24/2018 9:57	0	0.1	20.9	0	-0.2	None
GP-5BA	10/24/2018 10:01	0	0.3	19.6	0	-0.01	None
GP-5BB	10/24/2018 10:02	0	0.2	20.8	0	-0.23	None
GP-5BC	10/24/2018 10:03	0	0.1	20.8	0	-0.24	None
GP-5BD	10/24/2018 10:04	0	0.1	20.8	0	-0.76	None
GP-60	10/17/2018 21:49	0	0.1	21	0	0	None
GP-61	10/17/2018 21:30	0	1.6	20.3	0	0.38	None
GP-62	10/17/2018 21:26	0	1.3	20	0	-0.79	None
GP-6A	10/17/2018 22:44	0	0.1	21	0	-0.52	None
GP-6B	10/17/2018 22:46	0	0.1	21	0	1.03	None
GP-6C	10/17/2018 22:47	0	0.1	21	0	0.97	None
GP-6D	10/17/2018 22:49	0	0.1	21	0	5.90E-01	None
GP-6E	10/17/2018 22:51	0	0.1	21	0	0.96	None
GP-6F	10/17/2018 22:53	0	0.1	21	0	9.90E-01	None
GP-6G	10/17/2018 22:54	0	1.3	14.5	0	0.95	None
GP-6H	10/17/2018 22:56	0	0.1	21	0	0.58	None
GP-7	10/17/2018 22:24	0	0.1	21	0	0.65	None
GP-8	10/17/2018 22:18	0.1	0.5	19.2	0.02	5.90E-01	None
GP-9	10/17/2018 21:41	0	0.1	21	0	0.63	None

CEDAR HILLS REGIONAL LANDFILL
Landfill Gas Compliance Probes
October 2018 Monitoring

Probe ID	Date/Time	CH4 %vol	CO2 %vol2	O2 %vol3	Lower Explosive Limit %LEL	Static Pressure in INWC	Comments
GP-B4-1	10/17/2018 23:24	0	0.1	21	0	-0.05	None
GP-B4-2	10/17/2018 23:26	0	0.4	21	0	0.55	None

CEDAR HILLS REGIONAL LANDFILL
Landfill Gas Compliance Probes
November 2018 Monitoring

Probe ID	Date/Time	CH4 %vol	CO2 %vol2	O2 %vol3	Lower Explosive Limit %LEL	Static Pressure in INWC	Comments
ATC-03D	11/20/2018 11:33	0	0	0	0	0	NR H2O
ATC-03S	11/20/2018 11:32	0	1.2	17.6	0	2.13	None
GP-1A	11/19/2018 21:23	0	0.2	21.6	0	-0.07	None
GP-1B	11/19/2018 21:24	0	0.5	21.4	0	-0.1	None
GP-2A	11/19/2018 21:58	0	10.4	1.7	0	-0.06	None
GP-2B	11/19/2018 22:00	0	0.2	21.5	0	-0.07	None
GP-3	11/19/2018 22:18	0	11.3	4.7	0	-0.12	None
GP-46D	11/19/2018 22:28	0	0.2	21.8	0	1.27	None
GP-46I	11/19/2018 22:27	0	0.1	21.8	0	-0.33	None
GP-46S	11/19/2018 22:25	0	0.3	15.8	0	-0.01	None
GP-47D	11/20/2018 12:57	0	2.2	14	0	0.14	None
GP-47I	11/20/2018 12:55	39.2	21.9	0	7.84	3.2	None
GP-47S	11/20/2018 12:54	66.4	23.7	0	13.28	3.52	None
GP-48D	11/19/2018 22:40	6.8	9.9	0	1.36	1.64	None
GP-48I	11/19/2018 22:38	0	0.1	21.9	0	-0.1	None
GP-48S	11/19/2018 22:37	0	1.6	13.9	0	-0.09	None
GP-4A	11/19/2018 22:05	0	0.1	21.6	0	-0.05	None
GP-4B	11/19/2018 22:06	0	0.1	21.6	0	-0.03	None
GP-52	11/20/2018 12:45	0	0.1	19.3	0	1.90E-01	None
GP-53	11/20/2018 12:47	0	0.2	19	0	0.66	None
GP-54	11/20/2018 12:48	1.8	12.6	5.7	0.36	1.19	None
GP-55	11/19/2018 21:01	41	18.4	0	8.2	1.77	None
GP-56	11/19/2018 21:02	0.1	2.7	11.5	0.02	2.27	None
GP-57	11/19/2018 20:53	38.4	25.7	0.9	7.68	-0.81	None
GP-58	11/19/2018 20:55	0.1	16.9	1.8	0.02	-0.05	None
GP-59	11/19/2018 20:44	20.5	7.5	7.2	4.1	1.16	None
GP-5A	11/20/2018 12:32	0	0.5	10.2	0	3.72	None
GP-5BA	11/20/2018 12:35	0	0.2	19.2	0	0.24	None
GP-5BB	11/20/2018 12:37	0	1.4	12.8	0	3.65	None
GP-5BC	11/20/2018 12:38	0	0.7	7	0	3.51	None
GP-5BD	11/20/2018 12:39	0	1	10.1	0	3.24	None
GP-60	11/19/2018 20:47	0	0.2	21.5	0	-0.04	None
GP-61	11/19/2018 20:29	0	1.5	19.9	0	1.01	None
GP-62	11/19/2018 20:34	0	1.9	18.9	0	-0.02	None
GP-6A	11/19/2018 21:30	0	0.1	21.8	0	1.04	None
GP-6B	11/19/2018 21:31	0	4.3	2.3	0	2.21	None
GP-6C	11/19/2018 21:33	0	0.9	17.2	0	2.17	None
GP-6D	11/19/2018 21:34	0	4.9	0.2	0	2.08E+00	None
GP-6E	11/19/2018 21:36	0	2.6	7.6	0	2.24	None
GP-6F	11/19/2018 21:37	0	2.1	8.9	0	2.21E+00	None
GP-6G	11/19/2018 21:39	0	1.4	13.5	0	2.21	None
GP-6H	11/19/2018 21:40	0	4.9	0.1	0	2	None
GP-7	11/19/2018 21:20	0	3.7	13.1	0	1.47	None
GP-8	11/19/2018 21:10	0	5.7	12	0	1.54E+00	None
GP-9	11/19/2018 20:39	0	1.2	18.3	0	1.67	None

**CEDAR HILLS REGIONAL LANDFILL
Landfill Gas Compliance Probes
November 2018 Monitoring**

Probe ID	Date/Time	CH4 %vol	CO2 %vol2	O2 %vol3	Lower Explosive Limit %LEL	Static Pressure in INWC	Comments
GP-B4-1	11/19/2018 22:12	0	0.3	21.4	0	1.72	None
GP-B4-2	11/19/2018 22:14	0	2.5	19.1	0	1.8	None

CEDAR HILLS REGIONAL LANDFILL
Landfill Gas Compliance Probes
December 2018 Monitoring

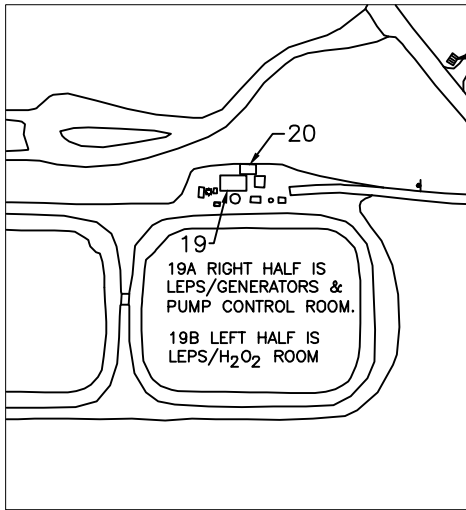
Probe ID	Date/Time	CH4 %vol	CO2 %vol2	O2 %vol3	Lower Explosive Limit %LEL	Static Pressure in INWC	Comments
ATC-03D	12/31/2018 11:23	0.00	0.40	19.40	0.00	0.06	None
ATC-03S	12/31/2018 11:21	0.00	0.20	19.60	0.00	0.00	None
GP-1A	12/20/2018 22:28	0.00	0.10	21.00	0.00	0.05	None
GP-1B	12/20/2018 22:30	0.00	0.20	20.90	0.00	0.04	None
GP-2A	12/20/2018 22:58	0.00	3.10	21.00	0.00	-0.01	None
GP-2B	12/20/2018 23:00	0.00	0.10	21.00	0.00	0.01	None
GP-3	12/20/2018 23:26	0.00	2.30	19.00	0.00	0.15	NR H2O
GP-46D	12/20/2018 23:36	0.00	0.10	21.00	0.00	-1.74	None
GP-46I	12/20/2018 23:34	0.00	0.10	21.00	0.00	-2.30	None
GP-46S	12/20/2018 23:32	0.00	0.20	18.60	0.00	-0.35	None
GP-47D	12/24/2018 11:30	0.00	0.70	15.50	0.00	0.49	None
GP-47I	12/24/2018 11:29	48.40	23.70	0.10	9.68	0.16	None
GP-47S	12/24/2018 11:27	0.00	0.10	20.50	0.00	0.13	None
GP-48D	12/20/2018 23:48	0.00	0.20	21.00	0.00	-0.30	None
GP-48I	12/20/2018 23:46	0.00	0.10	21.00	0.00	-0.86	None
GP-48S	12/20/2018 23:44	0.00	1.20	15.00	0.00	-0.08	None
GP-4A	12/20/2018 23:09	0.00	0.10	21.00	0.00	-0.04	None
GP-4B	12/20/2018 23:11	0.00	0.10	21.00	0.00	-0.09	None
GP-52	12/24/2018 11:19	0.00	0.10	20.40	0.00	-0.10	None
GP-53	12/24/2018 11:21	0.00	0.60	18.80	0.00	0.05	None
GP-54	12/24/2018 11:22	0.00	0.10	20.60	0.00	-0.07	None
GP-55	12/20/2018 22:09	0.20	0.50	20.40	0.04	-1.50	None
GP-56	12/20/2018 22:07	0.10	1.30	19.80	0.02	0.06	None
GP-57	12/20/2018 22:02	44.00	24.10	2.20	8.80	-17.13	None
GP-58	12/20/2018 22:00	0.00	16.90	0.30	0.00	47.42	None
GP-59	12/20/2018 21:55	0.00	0.20	20.60	0.00	-0.82	None
GP-5A	12/24/2018 10:51	0.00	0.10	21.00	0.00	-0.99	None
GP-5BA	12/24/2018 10:53	0.00	0.00	0.00	0.00	0.00	NR H2O
GP-5BB	12/24/2018 10:54	0.00	0.10	21.00	0.00	-0.98	None
GP-5BC	12/24/2018 10:55	0.00	0.10	21.00	0.00	-0.97	None
GP-5BD	12/24/2018 10:57	0.00	0.10	21.00	0.00	-0.53	None
GP-60	12/20/2018 21:53	0.00	0.10	20.50	0.00	0.00	None
GP-61	12/20/2018 21:38	0.00	0.10	20.60	0.00	-0.46	None
GP-62	12/20/2018 21:35	0.00	1.90	19.20	0.00	0.15	None
GP-6A	12/20/2018 22:37	0.00	0.10	21.00	0.00	-3.04	None
GP-6B	12/20/2018 22:39	0.00	1.80	15.10	0.00	-1.05	None
GP-6C	12/20/2018 22:41	0.00	0.30	20.00	0.00	-1.16	None
GP-6D	12/20/2018 22:43	0.00	0.10	21.00	0.00	-1.73	None
GP-6E	12/20/2018 22:45	0.00	2.60	7.70	0.00	-1.19	None
GP-6F	12/20/2018 22:47	0.00	0.10	21.00	0.00	-1.27	None
GP-6G	12/20/2018 22:49	0.00	0.10	21.00	0.00	-1.28	None
GP-6H	12/20/2018 22:51	0.00	0.10	21.00	0.00	-1.82	None
GP-7	12/20/2018 22:21	0.00	0.50	20.10	0.00	-1.51	None
GP-8	12/20/2018 22:15	0.00	0.10	20.90	0.00	-1.54	None
GP-9	12/20/2018 21:46	0.00	0.20	20.70	0.00	-0.82	None

CEDAR HILLS REGIONAL LANDFILL
Landfill Gas Compliance Probes
December 2018 Monitoring

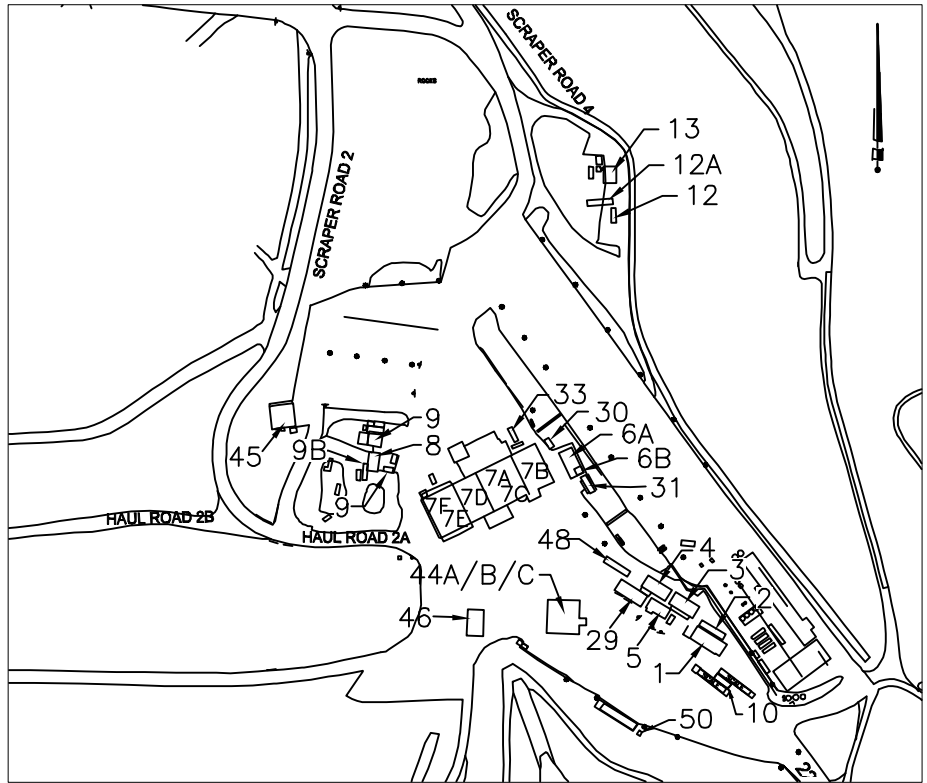
Probe ID	Date/Time	CH4 %vol	CO2 %vol2	O2 %vol3	Lower Explosive Limit %LEL	Static Pressure in INWC	Comments
GP-B4-1	12/20/2018 23:20	0.00	1.10	20.70	0.00	-2.86	None
GP-B4-2	12/20/2018 23:22	0.00	2.60	19.60	0.00	-1.73	None

On-site Building Monitoring

Aeration Ponds

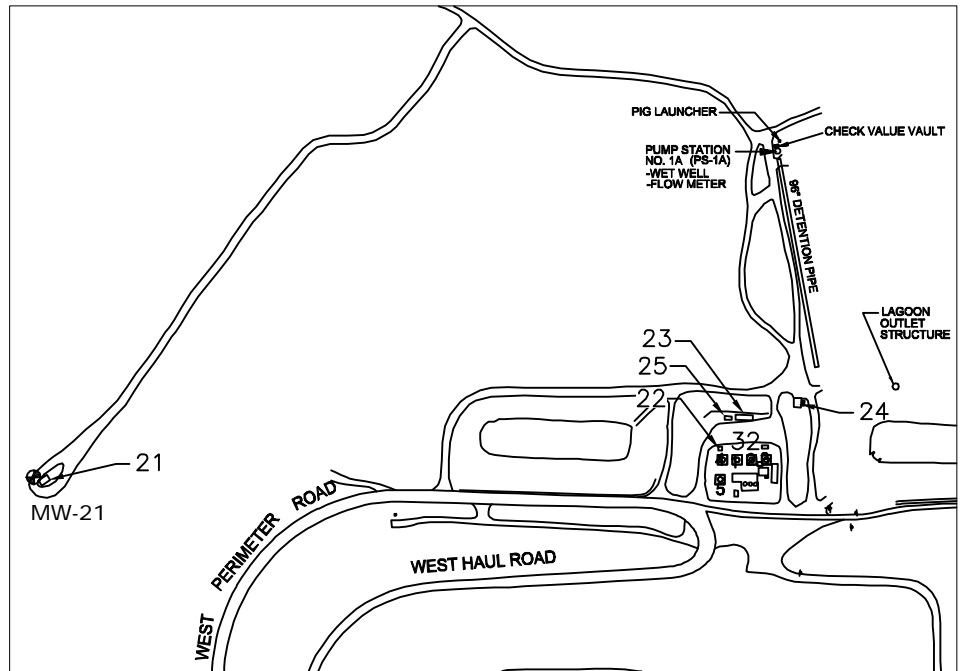


Shop and Office Buildings



BUILDING NO.	EO Description
1	Front Office
2	Conference Room
3	Vacant (Old Payroll Trailer)
4	Engineering Trailer
5	Lunch Room Trailer
6A	Dry Storage
6B	Electrician Office
7	Maintenance Shop
7A	Shop Office
7B	Stores—Shipping/Receiving
7C	Trailer Bay and Pit Area
7D	Tire Shop and Trailer Bay
7E	East Weld Shop
7F	West Weld Shop
8	Carpenter's Shop
9	Wastewater Shed
9B	Carpenter Storage
10	Scale House
11	New Eqpt. Operator's Trailer
12	EQ. Operator's Trailer (Old)
13	WW Compressor
16	Generator (Not Shown)
19	LEPS (P.S. #5)
19A	LEPS Pump Control Room
19B	LEPS/H ₂ O ₂ room
20	LEPS, Elec Panels
21	Storage(Old PS1)
22	Storage/N.Flare
23	LFGAS Office
24	NE Generator Bldg.
25	Storage BLDG. @ N.F.S.
29	OPS Administration Office
30	Women Brk Rm.
31	Landfill Leads/Accts Payable
32	North Flare Station
33	SPOC trailer
44A	Truck Wash West Restroom
44B	Truck Wash East Restroom
44C	Pressure Wash Room
45	Heavy Equipment Canopy
46	Fuel Island
48	Operations Planning
49	CCG Faster (Not Shown)
50	Chlorine Shed

North Flare Station



CEDAR HILLS REGIONAL LANDFILL BUILDING NUMBERS

Source: KCSWD, February 2012



King County
Regional Landfill
Annual Report
Attachment G

Landfill Gas Structure Monitoring Location


Environmental Monitoring Sampling and Analysis Plan
Cedar Hills Regional Landfill, King County, Washington

DATE: February 2012
DESIGNED BY:
DRAWN BY:
REVISED BY:

PROJECT NO.

FIGURE NO.


**FIRST QUARTER
BUILDING MONITORING**

		INSTRUMENT: Place check by instrument used : Foxboro TVA 1000 (sn. 301) <input type="checkbox"/> Foxboro TVA 1000 (sn. 732) <input checked="" type="checkbox"/>			WEATHER: RAINY/ NIGHT		DATE: 01/10/18 TECH: DNS	
ENVIS ID	BLDG #	DESCRIPTION	CH ₄ (ppm)	REMARKS	BAR PRESS (in. Hg)	TIME		
GOC- 01/10/18	1	FRONT OFFICE			29.96	8:09 PM		
GCR- 01/10/18		CONF ROOM						
GAO- 01/10/18	3	PAYROLL OFFICE						
GEO- 01/10/18	4	ENGR. OFFICE						
GLRC- 01/10/18	5	LUNCHROOM						
GSPC 01/10/18		SPOC						
GEL0- 01/10/18 A	6A	DRY STORAGE		REAR OBSTRUCTION				
GEL0- 01/10/18 B	6B	ELECTRICIAN OFFICE		REAR OBSTRUCTION				
GAP- 01/10/18		ACCOUNT PAYABLE						
GSO- 01/10/18 A	7A	SHOP OFFICE						
GPR- 01/10/18 B	7B	PARTS ROOM						
GMS- 01/10/18 C	7C	SHOP PIT AREA/BAY						
GTB- 01/10/18 D	7D	SHOP TIRE BAY						
GEW- 01/10/18 E	7E	EAST WELD SHOP						
GWV- 01/10/18 F	7F	WEST WELD SHOP		SIDE ZONED OFF LIMITS				
GCS- 01/10/18	8	CARPENTER'S	N/A	ZONED OFF LIMITS				
GSS- 01/10/18	9	WASTEWATER	N/A	ZONED OFF LIMITS				
GSS- 01/10/18 B	9B	CARPENTER/STORAGE	N/A	ZONED OFF LIMITS				
GSH- 01/10/18	10	SCALEHOUSE						
GB13- 01/10/18	13	WW COMPRESSOR						
GB16- 01/10/18	16	GENERATOR						
GB19- 01/10/18	19	LEPS (P.S.# 5)						
GB19- 01/10/18 B	19B	LEPS/H ₂ O ₂ ROOM						
GB20- 01/10/18	20	LEPS ELEC PANALS						
GB21- 01/10/18	21	STORAGE(OLD PS 1)	N/A	BUFFERED AREA				
GB22- 01/10/18	22	STORAGE/N FLARE						
GB23- 01/10/18	23	LFGAS						
GB24- 01/10/18	24	NE GENERATOR BLDG						
GBVW- 01/10/18	30	WOMEN BRK RM						
GPWT- 01/10/18	PW	PRESSURE WASH RM						
GBRR- 01/10/18	RR	TRUCKWASH RR W						
GBSS- 01/10/18	SS	TRUCKWASH RR E						
GBZZ- 01/10/18	29	MANAGERS TRAILER						
GBPT- 01/10/18		CCG FASTER						
GCLS- 01/10/18		CHLORINE SHED						

**SECOND QUARTER
BUILDING MONITORING**

 King County	INSTRUMENT: Place check by instrument used			WEATHER:	DATE: 04/03/18	
	Foxboro TVA 1000 (sn. 301) Foxboro TVA 1000 (sn. 732)				Mostly Cloudy/ Calm	TECH: BL
ENVIS ID	BLDG #	DESCRIPTION	CH ₄ (ppm)	REMARKS	BAR PRESS (in. Hg)	TIME
GOC- 04/03/18	1	FRONT OFFICE			29.97	8:25pm
GCR- 04/03/18	2	CONF ROOM				
GAO- 04/03/18	3	PAYROLL OFFICE				
GEO- 04/03/18	4	ENGR. OFFICE				
GLRC- 04/03/18	5	LUNCHROOM				
GSPC 04/03/18		SPOC				
GELO- 04/03/18 A	6A	DRY STORAGE		Partially inaccessible		
GELO- 04/03/18 B	6B	ELECTRICIAN OFFICE				
GAP- 04/03/18		ACCOUNT PAYABLE				
GSO- 04/03/18 A	7A	SHOP OFFICE				
GPR- 04/03/18 B	7B	PARTS ROOM				
GMS- 04/03/18 C	7C	SHOP PIT AREA/BAY				
GTB- 04/03/18 D	7D	SHOP TIRE BAY				
GEW- 04/03/18 E	7E	EAST WELD SHOP				
GWW- 04/03/18 F	7F	WEST WELD SHOP				
GCS- 04/03/18	8	CARPENTER'S		Partially inaccessible		
GSS- 04/03/18	9	WASTEWATER				
GSS- 04/03/18 B	9B	CARPENTER/STORAGE		Partially inaccessible		
GSH- 04/03/18	10	SCALEHOUSE				
GB13- 04/03/18	13	WW COMPRESSOR				
GB16- 04/03/18	16	GENERATOR				
GB19- 04/03/18	19	LEPS (P.S.# 5)		Hazardous area		
GB19- 04/03/18 B	19B	LEPS/H ₂ O ₂ ROOM		Hazardous area		
GB20- 04/03/18	20	LEPS ELEC PANALS		Hazardous area		
GB21- 04/03/18	21	STORAGE(OLD PS 1)				
GB22- 04/03/18	22	STORAGE/N FLARE				
GB23- 04/03/18	23	LFGAS				
GB24- 04/03/18	24	NE GENERATOR BLDG				
GBWW- 04/03/18	30	WOMEN BRK RM				
GPWT- 04/03/18	PW	PRESSURE WASH RM				
GBRR- 04/03/18	RR	TRUCKWASH RR W				
GBSS- 04/03/18	SS	TRUCKWASH RR E				
GBZZ- 04/03/18	29	MANAGERS TRAILER				
GBPT- 04/03/18		CCG FASTER				
GCLS- 04/03/18		CHLORINE SHED				

**THIRD QUARTER
BUILDING MONITORING**

		INSTRUMENT: Place check by instrument used			WEATHER:		DATE: 07/28/18	
		Foxboro TVA 1000 (sn. 301)			Night/ Clear		TECH: DNS	
		Foxboro TVA 1000 (sn. 732)			X			
ENVIS ID	BLDG #	DESCRIPTION	CH ₄ (ppm)	REMARKS		BAR PRESS (in. Hg)	TIME	
GOC- 07/28/18	1	FRONT OFFICE				29.95	9:45PM	
GCR- 07/28/18	2	CONF ROOM						
GAO- 07/28/18	3	PAYROLL OFFICE						
GEO- 07/28/18	4	ENGR. OFFICE						
GLRC- 07/28/18	5	LUNCHROOM						
GSPC 07/28/18		SPOC						
GELO- 07/28/18 A	6A	DRY STORAGE		OBSTRUCTIONS IN Various AREA				
GELO- 07/28/18 B	6B	ELECTRICIAN OFFICE		OBSTRUCTION IN Various AREA				
GAP- 07/28/18		ACCOUNT PAYABLE						
GSO- 07/28/18 A	7A	SHOP OFFICE						
GPR- 07/28/18 B	7B	PARTS ROOM						
GMS- 07/28/18 C	7C	SHOP PIT AREA/BAY						
GTB- 07/28/18 D	7D	SHOP TIRE BAY						
GEW- 07/28/18 E	7E	EAST WELD SHOP						
GWW- 07/28/18 F	7F	WEST WELD SHOP						
GCS- 07/28/18	8	CARPENTER'S	N/A	HAZARDOUS AREA				
GSS- 07/28/18	9	WASTEWATER	N/A	HAZARDOUS AREA				
GSS- 07/28/18 B	9B	CARPENTER/STORAGE						
GSH- 07/28/18	10	SCALEHOUSE						
GB13- 07/28/18	13	WW COMPRESSOR		REAR OBSTRUCTION				
GB16- 07/28/18	16	GENERATOR	N/A	HAZARDOUS AREA				
GB19- 07/28/18	19	LEPS (P.S.# 5)						
GB19- 07/28/18 B	19B	LEPS/H ₂ O ₂ ROOM						
GB20- 07/28/18	20	LEPS ELEC PANALS						
GB21- 07/28/18	21	STORAGE(OLD PS 1)	N/A	BUFFERED AREA				
GB22- 07/28/18	22	STORAGE/N FLARE	N/A	REMOVED				
GB23- 07/28/18	23	LFGAS						
GB24- 07/28/18	24	NE GENERATOR BLDG						
GBWW- 07/28/18	30	WOMEN BRK RM						
GPWT- 07/28/18	PW	PRESSURE WASH RM						
GBRR- 07/28/18	RR	TRUCKWASH RR W						
GBSS- 07/28/18	SS	TRUCKWASH RR E						
GBZZ- 07/28/18	29	MANAGERS TRAILER						
GBPT- 07/28/18		CCG FASTER						
GCLS- 07/28/18		CHLORINE SHED						

**FOURTH QUARTER
BUILDING MONITORING**

 King County	INSTRUMENT: Place check by instrument used			WEATHER:	DATE: 10/17/18	
	Foxboro TVA 1000 (sn. 301)				TECH: BL	
	Foxboro TVA 1000 (sn. 732)			X	Night/Calm	
ENVIS ID	BLDG #	DESCRIPTION	CH ₄ (ppm)	REMARKS	BAR PRESS (in. Hg)	TIME
GOC- 10/17/18	1	FRONT OFFICE			30.03	8:25pm
GCR- 10/17/18	2	CONF ROOM				
GAO- 10/17/18	3	PAYROLL OFFICE				
GEO- 10/17/18	4	ENGR. OFFICE				
GLRC- 10/17/18	5	LUNCHROOM				
GSPC 10/17/18		SPOC				
GELO- 10/17/18 A	6A	DRY STORAGE		Partially unaccessibl		
GELO- 10/17/18 B	6B	ELECTRICIAN OFFICE				
GAP- 10/17/18		ACCOUNT PAYABLE				
GSO- 10/17/18 A	7A	SHOP OFFICE				
GPR- 10/17/18 B	7B	PARTS ROOM				
GMS- 10/17/18 C	7C	SHOP PIT AREA/BAY				
GTB- 10/17/18 D	7D	SHOP TIRE BAY				
GEW- 10/17/18 E	7E	EAST WELD SHOP				
GWW- 10/17/18 F	7F	WEST WELD SHOP				
GCS- 10/17/18	8	CARPENTER'S		Partially unaccessibl		
GSS- 10/17/18	9	WASTEWATER		Partially unaccessibl		
GSS- 10/17/18 B	9B	CARPENTER/STORAGE		Partially unaccessibl		
GSH- 10/17/18	10	SCALEHOUSE				
GB13- 10/17/18	13	WW COMPRESSOR				
GB16- 10/17/18	16	GENERATOR				
GB19- 10/17/18	19	LEPS (P.S.# 5)				
GB19- 10/17/18 B	19B	LEPS/H ₂ O ₂ ROOM				
GB20- 10/17/18	20	LEPS ELEC PANALS		Partially unaccessibl		
GB21- 10/17/18	21	STORAGE(OLD PS 1)				
GB22- 10/17/18	22	STORAGE/N FLARE				
GB23- 10/17/18	23	LFGAS				
GB24- 10/17/18	24	NE GENERATOR BLDG				
GBWW- 10/17/18	30	WOMEN BRK RM				
GPWT- 10/17/18	PW	PRESSURE WASH RM				
GBRR- 10/17/18	RR	TRUCKWASH RR W				
GBSS- 10/17/18	SS	TRUCKWASH RR E				
GBZZ- 10/17/18	29	MANAGERS TRAILER				
GBPT- 10/17/18		CCG FASTER				
GCLS- 10/17/18		CHLORINE SHED				

Passage Point Monitoring

Survey Location	Room ID	Room Description	Survey Date 1-23-2018 Survey Time: 12:00 to 1:00 Weather = Rain 43 F Inspectors: PJ/NW Survey Instrument: IR Heathe		Survey Date 2-13-2018 Survey Time: 1:30 to 2:30 Weather = P/SUN 40 F Inspectors: PJ/NW Survey Instrument: IR Heathe		Survey Date 3-22-2018 Survey Time: 12:00 to 1:00 Weather = Rain 40 F Inspectors: PJ/NW Survey Instrument: IR Heathe		Survey Date 04-10-2018 Survey Time: 11:00 to 12:00 Weather = Showers 55 F Inspectors: PJ/MH Survey Instrument: IR Heathe		Survey Date 05-15-2018 Survey Time: 10:30 to 11:30 Weather = Coudy 57 F Inspectors: PJ/NW/SG Survey Instrument: IR Heathe		Survey Date 6-12-2018 Survey Time: 10:30 to 11:30 Weather = SUN 61F Inspectors: PJ/SL/SB Survey Instrument: IR Heathe	
			CH ₄ (ppm) Jan-18	Probable Source	CH ₄ (ppm) Feb-18	Probable Source	CH ₄ (ppm) Mar-18	Probable Source	CH ₄ (ppm) Apr-18	Probable Source	CH ₄ (ppm) May-18	Probable Source	CH ₄ (ppm) Jun-17	Probable Source
Administration Building	GPPA12_SB	STAFF BREAK (A005)	1		1		2		0		0		1	
	GPPA12_SR	STAFF/RESTROOM (A006/7)	2		1		2		0		0		0	
	GPPA12_JO	JAN. OFFICE (A004)	1		2		2		1		0		0	
	GPPA12_J02	JAN. OFFICE 2 (A003)	1		1		2		0		0		1	
	GPPA12_TS	TRANSPORT STOR (A008)	1		1		2		0		1		3	
	GPPA12_JS	JANITOR SUPPLY (A009)	1		2		2		0		1		1	
	GPPA12_FS	FILES/STORAGE (A010)	1		2		2		0		2		1	
	GPPA12_EP	ELECTRIC PANEL (A013)	2		1		2		0		1		1	
	GPPA12_S	SECURITY (A012)	2		1		1		No Key		1		1	
GPPA12_R	REPAIR SHOP (A011)	2		1		No Key	No Key	0		1		2		
Building B	GPPB12_U1	UNIT 1 (B001)	1		1		0		0		0		2	
	GPPB12_U2	UNIT 2 (B002)	1		1		0		1		1		1	
	GPPB12_U3	UNIT 3 (B003)	1		0		1		0		1		0	
	GPPB12_U4	UNIT 4 (B004)	1		0		0		1		1		0	
Building C	GPPC12_U1	UNIT 1 (C101)	1		1		2		0		1		1	
	GPPC12_U2	UNIT 2 (C102)	0		0		2		0		0		0	
	GPPC12_U3	UNIT 3 (C103)	1		0		2		0		1		0	
	GPPC12_U4	UNIT 4 (C104)	0		2		2		0		2		1	
	GPPC12_U6	UNIT 6 (C106)	0		1		1		0		1		2	
	GPPC12_U5	UNIT 5 (C105)	0		2		1		1		1		2	
	GPPC12_U7	UNIT 7 (C107)	1		0		1		1		1		1	
	GPPC12_U8	UNIT 8 (C108)	0		1		1		0		0		1	
	GPPC12_U9	UNIT 9 (C109)	0		2		Skipped	No Key	1		0		1	
	GPPC12_U10	MECHANICAL ROOM (C110)	0		0		2		0		1		2	
Building D	GPPD12_13	STAFF LOUNGE (D013)	0		2		0		1		0		0	
	GPPD12_12	TEEN STORAGE (D012)	0		1		0		2		0		1	
	GPPD12_11	TEEN GROUP (D011)	0		1		0		1		0		1	
	GPPD12_14	LOUNGE STORAGE (D014)	0		1		1		0		0		1	
	GPPD12_09	SUPPORT GRP (D009)	0		2		3		0		0		2	
	GPPD12_08	COUNSELING (D008)	1		2		0		1		0		1	
	GPPD12_10	WAITING ROOM (D010)	1		2		1		0		0		1	
	GPPD12_28	MEN'S ROOM (D028)	0		1		2		1		0		1	
	GPPD12_27	WOMEN'S ROOM (D027)	0		2		3		1		0		1	
	GPPD12_17	ADA EXAM (D017)	0		1		3		3		0		1	
	GPPD12_18	EXAM (D018)	0		1		4		2		0		1	
	GPPD12_19	MEETING RM (D019)	0		3		4		1		0		2	
	GPPD12_21	COUNSELING (D021)	0		2		4		2		0		0	
	GPPD12_20	WELLNESS WAITING (D020)	0		2		3		1		0		0	
	GPPD12_23	CONF ROOM STORAGE (D023)	0		2		3		1		0		1	
	GPPD12_22	CONF ROOM (D022)	0		3		1		2		0		1	
	GPPD12_24	MECH/ELEC (D024)	0		2		3		1		0		0	
	GPPD12_26	OFFICE/MTG ROOM (D026)	0		2		Skipped	Private meeting	0		0		0	
	GPPD12_29	OFFICE (D029)	0		2		1		0		0		0	
	GPPD12_30	OFFICE (D030)	0		2		1		0		0		0	
	GPPD12_31	CASE MGR OFFICE (D031)	0		3		1		0		0		0	
	GPPD12_05	TEEN LOUNGE (D005)	1		3		0		2		0		0	
	GPPD12_06	STORE (D006)	2		3		1		1		0		0	
GPPD12_07	COMPUTER (D007)	1		3		2		2		0		0		
GPPD12_03	CHILD PLAY (D003)	2		2		1		2		0		0		
GPPD12_02	LAUNDRY (D002)	2		2		0		2		0		0		
Building G	GPPG12_U1	UNIT 1 (G001)	1		1		2		0		4		1	
	GPPG12_U2	UNIT 2 (G002)	2		0		1		0		1		0	
	GPPG12_U3	UNIT 3 (G003)	2		0		2		1		3		0	
	GPPG12_U4	UNIT 4 (G004)	1		1		1		0		5		0	
Building E	GPPE12_BR	BOILER ROOM (E104)	2		2		2		1		1		0	
	GPPE12_U3	UNIT 3 (E103)	2		1		2		1		0		2	
	GPPE12_U2	UNIT 2 (E102)	1		0		2		1		0		0	
GPPE12_U1	UNIT 1 (E101)	2		1		1		2		0		1		

Survey Location	Survey Date 7-12-2018 Survey Time: 10:30 to 11:30 Weather = sun 73F Inspectors: PJ/SB Survey Instrument: IR Heathe	Probable Source	Survey Date 8-22-2018 Survey Time: 12:00 to 1:00 Weather = Smoke haze 85F Inspectors: PJ/SB Survey Instrument: IR Heathe	Probable Source	Survey Date 09-11-2018 Survey Time: 11:30 to 12:30 Weather = Showers 65F Inspectors: PJ/SL Survey Instrument: IR Heathe	Probable Source	Survey Date 10-24-2018 Survey Time: 10:30 to 11:00 Weather = Sun 60F Inspectors: PJ/DC/AJ Survey Instrument: IR Heathe	Probable Source	Survey Date 11-13-2018 Survey Time: 10:30 to 11:30 Weather = Partly cloudy 53F Inspectors: PJ/SB Survey Instrument: IR Heathe	Probable Source	Survey Date 12-11-2018 Survey Time: 11:30 to 12:30 Weather = Overcast 50F Inspectors: PJ/NW Survey Instrument: IR Heathe	Probable Source
	CH ₄ (ppm) Jul-18		CH ₄ (ppm) Aug-18		CH ₄ (ppm) Sep-18		CH ₄ (ppm) Oct-18		CH ₄ (ppm) Nov-18		CH ₄ (ppm) Dec-18	
Administration Building	0		0		0		0		1		1	
	1		0		0		0		2		0	
	1		0		1		1		0		0	
	1		0		0		1		0		1	
	1		0		0		0		1		0	
	0		0		0		1		1		0	
	1		0		0		1		1		0	
	0		0		0		0		0		0	
	0		0		0		0		1		0	
	No Key		NO KEY		No Key		No Key		No Key		No Key	
Building B	2		0		0		0		0		0	
	2		0		0		2		0		0	
	3		0		0		0		0		1	
	1		1		0		0		1		1	
Building C	1		1		0		1		1		0	
	1		2		0		0		0		0	
	1		1		0		1		1		No access lock broken	
	2		1		0		2		1		1	
	1		0		0		1		0		1	
	2		1		1		1		0		0	
	2		2		1		0		1		1	
	1		2		0		0		0		1	
	0		2		1		1		0		1	
	0		0		0		0		1		0	
Building D	1		1		1		1		0		2	
	2		0		0		1		0		1	
	2		1		0		1		0		1	
	0		1		0		0		0		1	
	1		1		1		1		0		1	
	2		1		1		0		1		1	
	1		1		1		0		0		0	
	2		2		0		0		0		0	
	2		1		1		0		2		0	
	3		0		1		0		1		0	
	3		1		1		0		0		1	
	4		1		0		0		1		0	
	3		0		0		0		2		0	
	1		0		1		0		1		0	
	2		0		0		0		1		0	
	1		1		1		0		1		1	
	1		1		1		0		2		0	
	1		1		1		0		1		0	
	0		1		1		0		2		0	
	1		1		1		0		1		0	
	0		1		1		0		1		0	
	1		0		2		0		0		0	
	1		0		1		0		0		0	
	1		1		1		1		0		1	
0		0		2		0		0		1		
Building G	3		0		1		1		0		0	
	2		0		0		0		0		0	
	2		0		0		0		1		0	
	3		0		1		0		1		0	
Building E	2		2		2		0		0		1	
	1		1		1		1		0		0	
	3		1		1		1		0		0	
	1		1		1		0		0		0	