

King County Green Schools Program



Reduce



Reuse



Recycle



Rethink

Energy Conservation



King County

Department of
Natural Resources and Parks
Solid Waste Division

Waste
Prevention

Resource
Recovery

Waste
Disposal

Today we will become experts in energy conservation. We will learn:

- why we conserve energy
- how we can conserve energy at school and at home

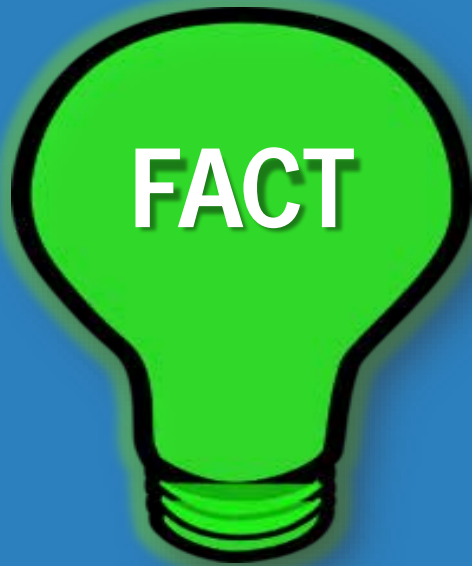
Why we conserve energy ...



King County

Department of
Natural Resources and Parks
Solid Waste Division

Why we conserve energy ...



or



Fact or Fiction?



King County

Department of
Natural Resources and Parks
Solid Waste Division

Fact or Fiction?

About 70 percent of all the energy we use in the U.S. comes from nonrenewable resources like coal, oil, and nuclear fission.



Fact or Fiction?

About 70 percent of all the energy we use in the U.S. comes from nonrenewable resources like coal, oil, and nuclear fission.



Fact or Fiction?

About **90 percent** of all the energy we use in the U.S. comes from nonrenewable resources like coal, oil, and nuclear fission.



Fact or Fiction?



King County

Department of
Natural Resources and Parks
Solid Waste Division

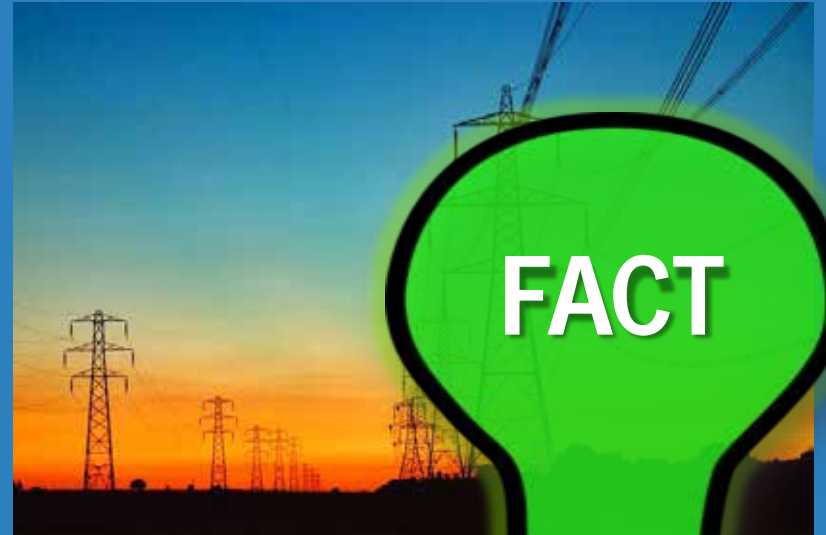
Fact or Fiction?

Electricity production is the leading cause of industrial air pollution in the United States, and is responsible for 40 percent of national carbon emissions that contribute to climate change.



Fact or Fiction?

Electricity production is the leading cause of industrial air pollution in the United States, and is responsible for 40 percent of national carbon emissions that contribute to climate change.



Fact or Fiction?



King County

Department of
Natural Resources and Parks
Solid Waste Division

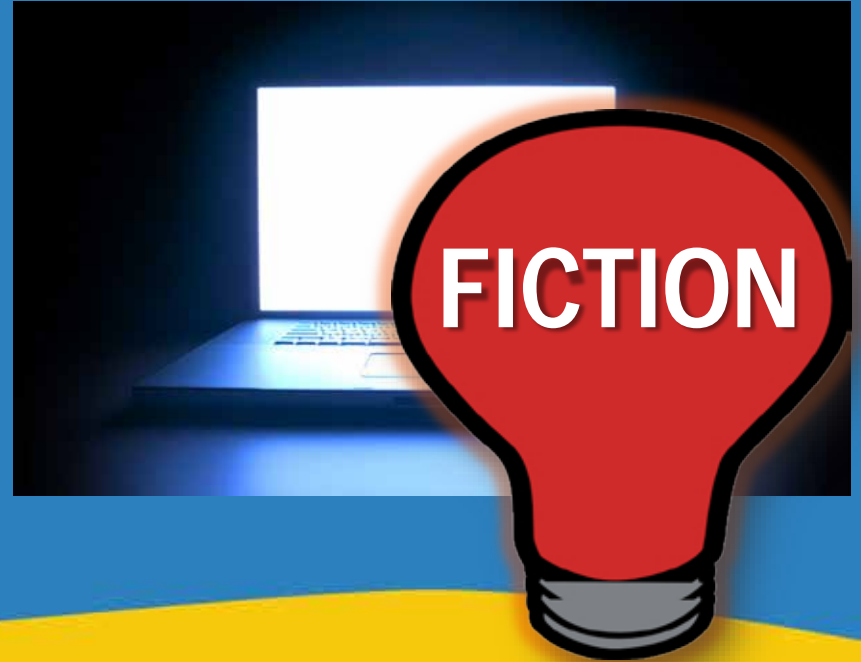
Fact or Fiction?

In the U.S. computer monitors waste over \$100 million in electricity per year because 60 percent of computers and monitors are left on over night.



Fact or Fiction?

In the U.S. computer monitors waste over \$100 million in electricity per year because 60 percent of computers and monitors are left on over night.



Fact or Fiction?

In the U.S. computer monitors waste over **\$900 million in electricity per year** because 60 percent of computers and monitors are left on over night.



Fact or Fiction?



King County

Department of
Natural Resources and Parks
Solid Waste Division

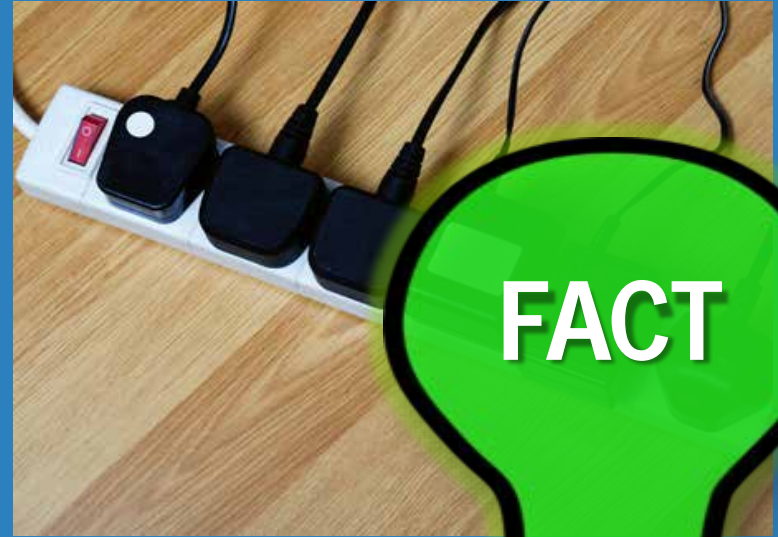
Fact or Fiction?

Many idle electronics -
TVs, game consoles, cell
phone chargers,
microwaves – use energy
even when switched off.



Fact or Fiction?

Many idle electronics -
TVs, game consoles, cell
phone chargers,
microwaves – use energy
even when switched off.



Fact or Fiction?



King County

Department of
Natural Resources and Parks
Solid Waste Division

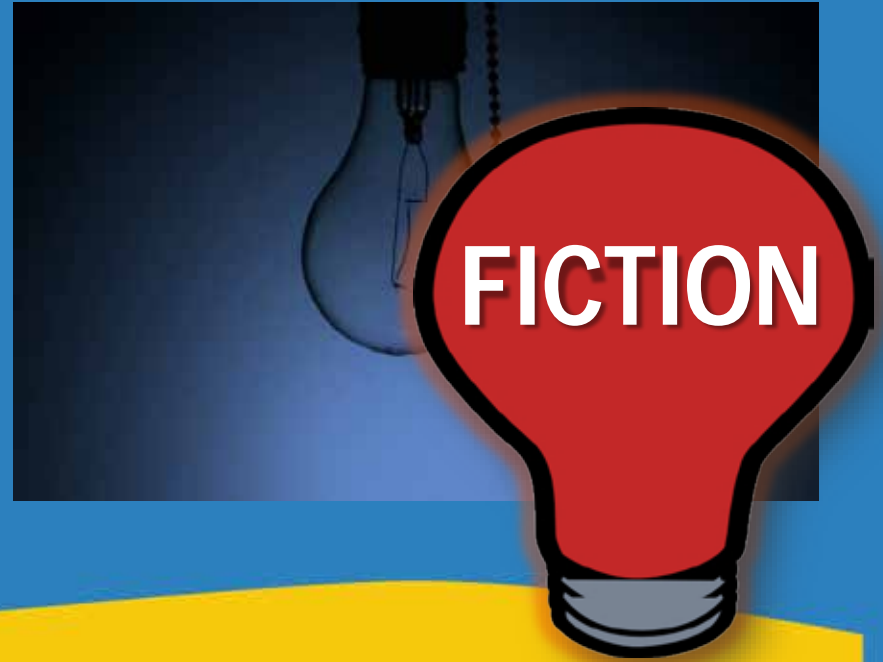
Fact or Fiction?

Turning lights out two hours earlier each day at your school can save as much as \$200 per month.



Fact or Fiction?

Turning lights out two hours earlier each day at your school can save as much as \$200 per month.



Fact or Fiction?

Turning lights out two hours earlier each day at your school can save as much as **\$500 per month** and keep over four pounds of pollutants out of the environment.



Conserving energy helps us...



King County

Department of
Natural Resources and Parks
Solid Waste Division

Conserving energy helps us...

- Protect natural resources and the environment

Conserving energy helps us...

- Protect natural resources and the environment
- Reduce pollution

Conserving energy helps us...

- Protect natural resources and the environment
- Reduce pollution
- Save money

How can we conserve energy at school and at home?

Conserving Energy

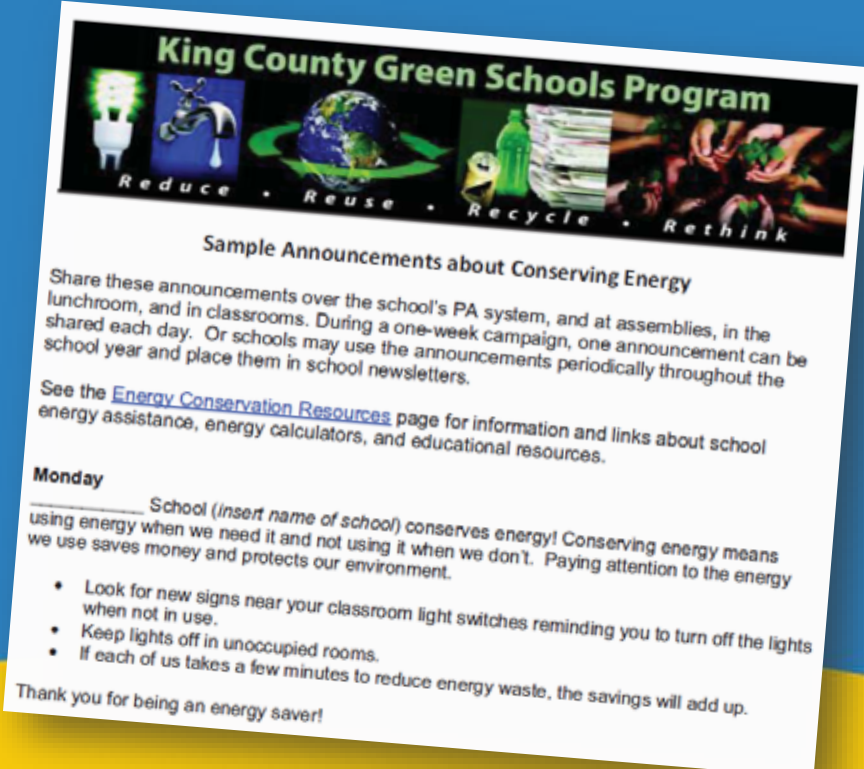
Post signs on or near light switches and electronic equipment to remind staff and students to conserve energy.



Conserving Energy

Regularly share an energy conservation fact, tip, or practice via:

- Morning announcements
- Staff meetings
- School assemblies



The flyer features a header with the title "King County Green Schools Program" and four icons: a glowing lightbulb, a water tap with a single drop, a globe with a recycling symbol, and a stack of papers. Below the icons are the words "Reduce • Reuse • Recycle • Rethink".

Sample Announcements about Conserving Energy

Share these announcements over the school's PA system, and at assemblies, in the lunchroom, and in classrooms. During a one-week campaign, one announcement can be shared each day. Or schools may use the announcements periodically throughout the school year and place them in school newsletters.

See the [Energy Conservation Resources](#) page for information and links about school energy assistance, energy calculators, and educational resources.

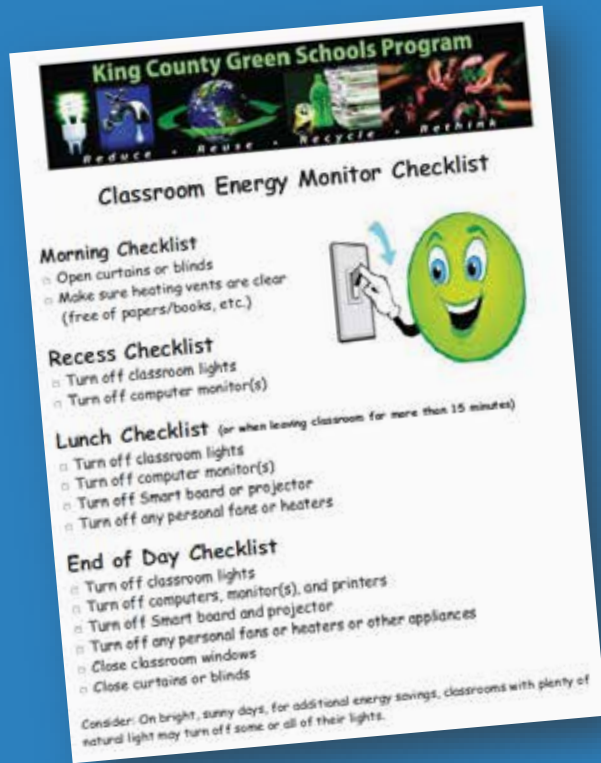
Monday

_____ School (*insert name of school*) conserves energy! Conserving energy means using energy when we need it and not using it when we don't. Paying attention to the energy we use saves money and protects our environment.

- Look for new signs near your classroom light switches reminding you to turn off the lights when not in use.
- Keep lights off in unoccupied rooms.
- If each of us takes a few minutes to reduce energy waste, the savings will add up.

Thank you for being an energy saver!


Conserving Energy



Form an energy patrol team to spot check areas of the school for energy conservation practices.

Conserving Energy

Take a pledge to conserve energy at home and at school.



King County Green Schools Program

Reduce • Reuse • Recycle • Rethink

Energy Conservation Pledge for Students


Commit to at least three activities and return this signed pledge to your teacher. Conserving energy saves our natural resources and protects habitats. I pledge to conserve energy in my school.

I will:

- Work with my teacher to turn off lights when we leave the room.
- Help my teacher remember to use daylight by opening window blinds and leaving lights off when enough natural light is available.
- Help my teacher close window blinds at the end of the day to keep heat in the room.
- Keep windows and doors closed when the heat or air conditioning is on.
- Keep furniture, books and other materials off of and away from heating vents.
- Turn off computer monitors, overhead projectors, TVs and other electrical equipment when they are not in use.
- Join an "energy patrol" at school. (An energy patrol is a group of students who spot check areas of the school for energy conservation practices.)
- Teach one other person why it is important to conserve energy.
- Share with my family a few ways to conserve energy at home, such as turning off lights when we leave a room or shutting down the computer at night.

Student Signature: _____ Date: _____

Teacher Signature: _____ Date: _____





King Street Center
201 South Jackson Street, Suite 701
Seattle, WA 98104-3855
206-477-4466
711 TTY Relay
your.kingcounty.gov/solidwaste

Sources

National Energy Foundation and the Albuquerque Public Schools Energy Conservation Rebate Program. (2006, March 2). *Energy Facts for Teachers*. Retrieved from: http://www.aps.edu/energy-conservation/energy-lessons-and-games/energy-lessons-and-games/16_EnergyFactsforTeachers.pdf/view

Worldwatch Institute. Havrilla, Carrie and Worldwatch Institute. (2004). *Electricity, Green Power: An Electrifying Choice*. Retrieved from: <http://www.worldwatch.org/system/files/Electricity.pdf>

Alliance to Save Energy, Power Save Schools. (2015) *Learn the Basics*. Retrieved from <http://www.powersaveschools.org/learn-the-basics.html>