

Do you know that **Hazardous Waste**

cannot go in the trash
or down the drain?

So where
do I take it?

If a product has a label with one or more of these **words** it's hazardous waste!



Live in King County? Take your household hazardous waste to any of our collection sites. No appointment. No fee.

Visit kingcountyhazwasteWA.gov for holiday schedules and additional information



NORTH SEATTLE

12550 Stone Ave N
Seattle, WA 98133

Open: 9a-5p Sun.-Tues.



SOUTH SEATTLE

8100 2nd Ave S
Seattle, WA 98108

Open: 9a-5p Thu.-Sat.

Located across from the transfer station



FACTORIA

13800 SE 32nd St
Bellevue, WA 98005

Open: 8a-4p Tues.-Fri. and
9a-5p Sat.-Sun.

Located at the transfer station



AUBURN

1101 Outlet
Collection Way
Auburn, WA 98001

Open: 10a-5p Sat.-Sun.

Open year-round
Located near the loading dock
of Nordstrom Rack

WE ALSO COME TO YOUR AREA!

Find out when the Wastemobile (mobile collection) will be in your neighborhood.
For seniors and residents with disabilities we offer home collection.

Haz Waste Help Line 206-296-4692

kingcountyhazwasteWA.gov



Accepted

*quantity limits apply



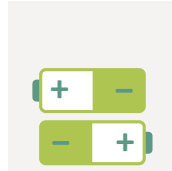
Adhesives and caulks



Antifreeze



Automotive products



Batteries*
(lead-acid, alkaline, button, rechargeable)



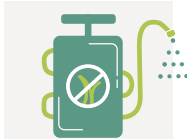
Fluorescent lights*



Gasoline*



Household cleaners



Lawn and garden products



Marine flares*
Not accepted at Wastemobile



Mercury products



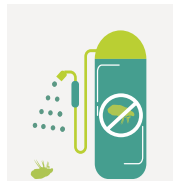
Motor oil*



Oil-based paints and stains



Paint thinner and other solvents



Pesticides



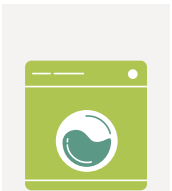
Pool and spa chemicals



Propane and butane tanks*

For a full list of items and quantity limits, visit kingcountyhazwasteWA.gov or call the Haz Waste Help Line 206-296-4692.

Not accepted



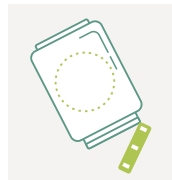
Appliances



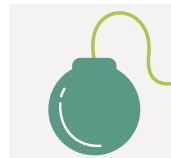
Asbestos



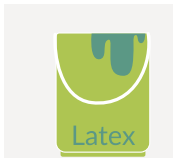
Electronics, TVs, and computers



Empty containers



Explosives
(fireworks, ammunition, gunpowder, explosive powder)

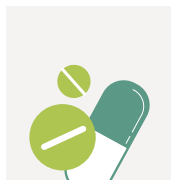


Latex or water-based paint

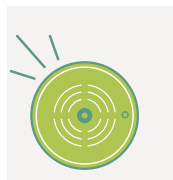
Recycle at a PaintCare drop-off site. For locations visit paintcare.org/wa



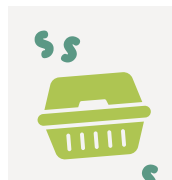
Medical sharps



Medicines



Smoke detectors



Styrofoam



Tires