



King County

Department of Natural Resources and Parks
Wastewater Treatment Division

COAL CREEK SEWER UPGRADE

April 23, 2020

Roadwork with lane closures on Coal Creek Parkway starting as early as April 27

During this time, King County Wastewater Treatment Division (WTD) operations staff and contractors remain on the job to ensure the region's wastewater treatment service continues. Our capital projects are critical to our mission – treating wastewater to protect public health. Field work continues to inform the design of the Coal Creek Sewer Upgrade, which will provide needed wastewater capacity for growing communities in Bellevue and Newcastle.

Upcoming utility location

Starting as early as April 27, crews will close one lane of traffic along Coal Creek Parkway to locate utilities in the roadway using a construction technique called “potholing”.

During this work, crews will use a jackhammer to break up pavement in seven locations (see map on reverse). Then they will use a vacuum excavation truck to remove dirt and locate utilities. Once the utilities have been located, the roadway will be restored. **Potholing work should take approximately 3 days to complete. No work is planned for the weekend.**

There will be travel lane, bicycle lane and sidewalk closures near potholing locations during work hours. Please follow signs and flaggers to travel safely through the area!

What to expect during the work

- Work will take place Monday-Friday, from 9:00 a.m. until 4:00 p.m.
- Flaggers will direct commuters around a one lane closure by the work area on Coal Creek Parkway
- Equipment in the roadway; traffic control equipment may be parked on the roadway shoulder overnight
- For safety, Olympic Pipeline inspectors will be onsite during utility location work
- Noise typical of a construction site
- Watch for warning signs prior to the lane closure in each direction!

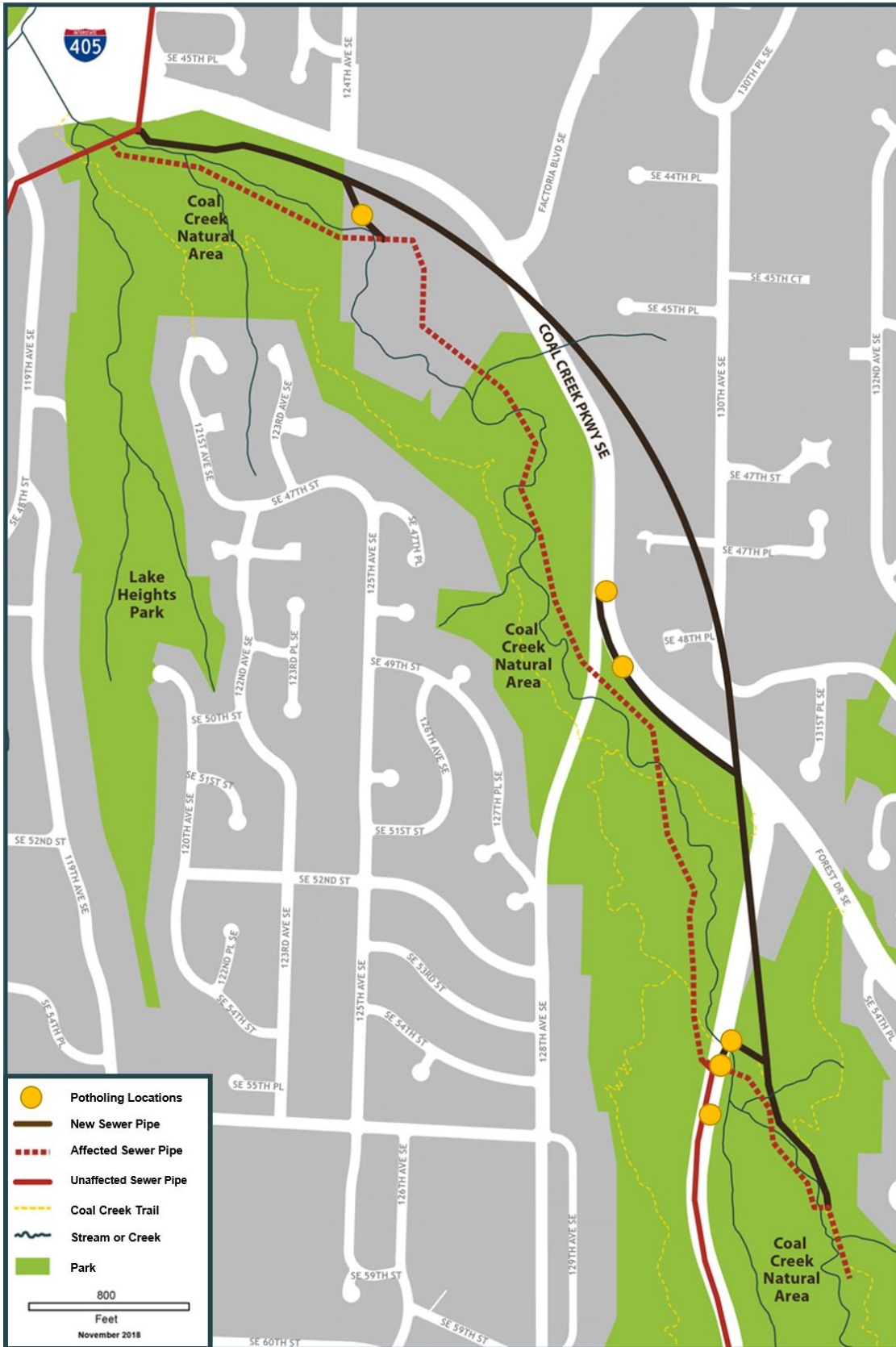
About the project

King County WTD is designing a new sewer line to replace an existing line that runs under the Coal Creek Natural Area. The existing 2.5-mile long pipe provides service to Bellevue and Newcastle and is nearing maximum capacity during large rain events. The new design will move the pipeline away from the natural area and serve Bellevue and Newcastle communities for another 50 years or more.

Contact us with questions or concerns

The County is ready to work with you every step of the way. **If you have questions or want to learn more, please contact Monica Van der Vieren at 206-477-5502 or monica.vandervieren@kingcounty.gov.**

**Alternative Formats Available
206-684-1235 / 711 (TTY Relay)**



Map of work locations along Coal Creek Parkway. Some locations will have more than one pothole excavation.

**Alternative Formats Available
206-684-1235 / 711 (TTY Relay)**

Want more information?

Visit: <https://www.kingcounty.gov/CoalCreekSewer>

Call or email: Monica Van der Vieren at monica.vandervieren@kingcounty.gov or 206-477-5502

Our team is ready to work with you for your translation needs. For translated materials, please visit

<https://www.kingcounty.gov/CoalCreekSewer>

Nuestro equipo está preparado para trabajar con usted si necesita una traducción. Para obtener los materiales traducidos, visite <https://www.kingcounty.gov/CoalCreekSewer>

당사의 팀은 여러분과 협력하여 여러분의 번역 필요에 부응하고 있습니다. 번역된 자료를 보시려면 아래를 방문하십시오.

<https://www.kingcounty.gov/CoalCreekSewer>

Наша команда готова помочь вам с переводом. Для получения переведенных материалов посетите

<https://www.kingcounty.gov/CoalCreekSewer>

Nhóm của chúng tôi sẵn sàng làm việc với quý vị để đáp ứng các nhu cầu dịch thuật của quý vị. Để đọc tài liệu dịch thuật, vui lòng truy cập <https://www.kingcounty.gov/CoalCreekSewer>

我们的团队随时可以协助您的翻译需求，请在 <https://www.kingcounty.gov/CoalCreekSewer> 查看翻译的资料。

我們的團隊隨時可以協助您的翻譯需求，請至 <https://www.kingcounty.gov/CoalCreekSewer> 檢視翻譯的資料。

**Alternative Formats Available
206-684-1235 / 711 (TTY Relay)**