



King County

Department of Natural Resources and Parks
Wastewater Treatment Division

COAL CREEK SEWER UPGRADE

May 2020

Utility location with lane closure on Coal Creek Parkway starting as early as May 15

During this time, King County Wastewater Treatment Division (WTD) operations staff and contractors remain on the job to ensure the region's wastewater treatment service continues. Our construction projects are critical to our mission – treating wastewater to protect public health and the environment. Field work continues to inform the design of the Coal Creek Sewer Upgrade, which will provide needed wastewater capacity for growing communities in Bellevue and Newcastle.

Upcoming utility location in Coal Creek Parkway

Starting as early as May 15, crews will close one lane of traffic along Coal Creek Parkway near the Upper West trailhead to verify the location of utilities in the sidewalk using small vacuum excavations.

During this work, crews will use a jackhammer to break up the sidewalk. Then, they will use a vacuum excavation truck to remove dirt and locate utilities. Once the utilities have been located, the sidewalk will be fully restored approximately one month after the work is completed.

There will be travel lane, bicycle lane and sidewalk closures near the work area. Please follow signs and flaggers to travel safely through the area!

What to expect

- Work will take place Monday - Friday from 9 a.m. to 4 p.m.
- One lane of traffic and the bike lane will be closed near the work area to make space for equipment
 - Flaggers will direct commuters and bikers around the work area by the Upper West trailhead on Coal Creek Parkway
- Equipment in the road; traffic control equipment may be parked on the road shoulder overnight
- Noise typical of a construction site
- Watch for warning signs prior to the lane closure in each direction!

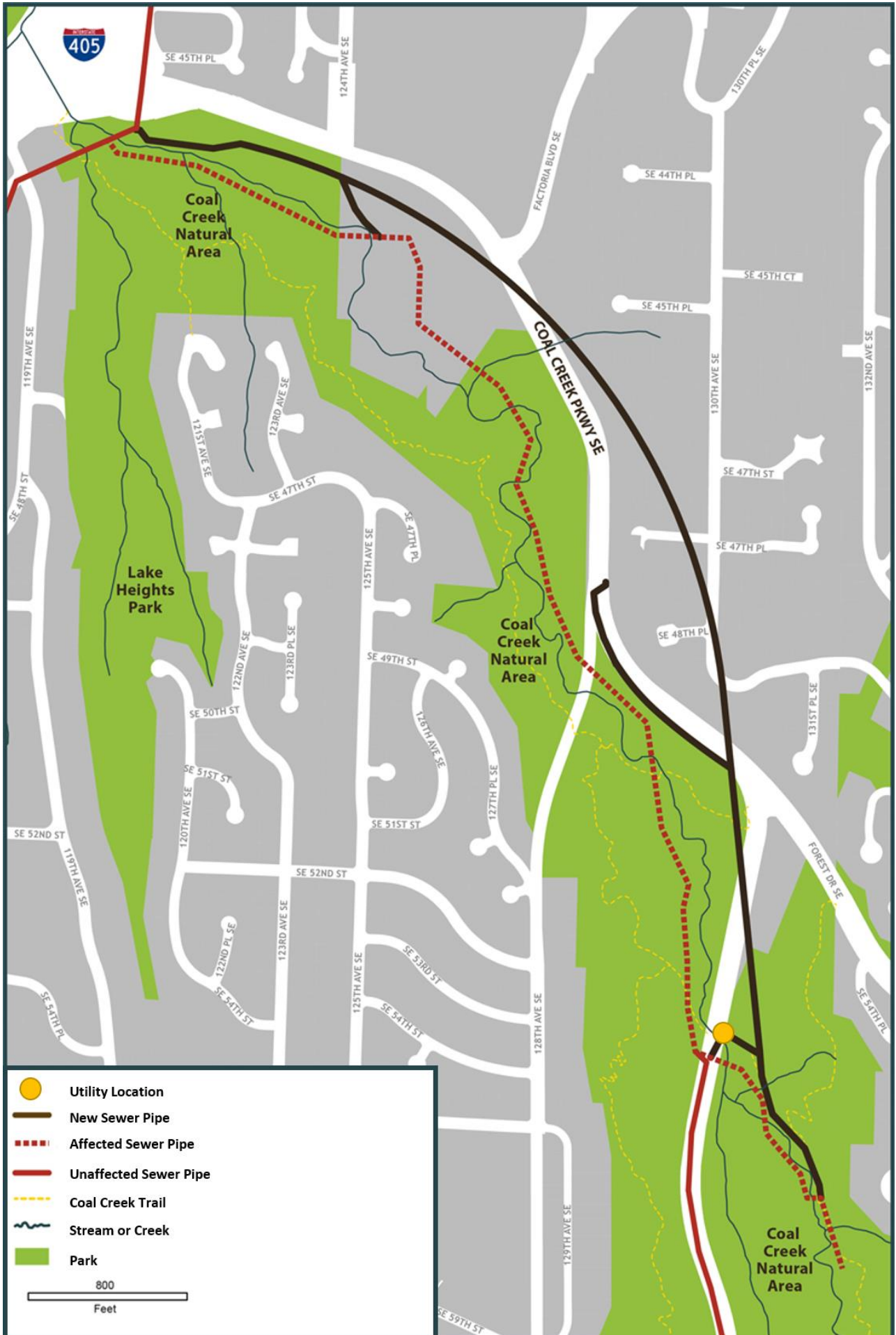


Example of a vacuum truck used for utility location.

About the project

King County Wastewater Treatment Division is designing a project to replace a sewer pipeline that serves part of Bellevue and Newcastle. The Coal Creek Trunk Sewer extends for 2.5 miles. The north segment, around 1.5 miles long, is nearing maximum capacity. This project gives King County the opportunity to move much of the active pipe away from the banks of Coal Creek. The new pipe will serve Bellevue and Newcastle communities for another 50 years or more.

**Alternative Formats Available
206-477-8621 / 711 (TTY Relay)**



	Utility Location
	New Sewer Pipe
	Affected Sewer Pipe
	Unaffected Sewer Pipe
	Coal Creek Trail
	Stream or Creek
	Park

Contact us with questions or concerns

We know that project communities will have questions and concerns about large, critical wastewater projects. The County is ready to work with you every step of the way. **If you have questions or want to learn more, please contact Monica Van der Vieren at 206-477-5502 or monica.vandervieren@kingcounty.gov.**

Want more information?

Visit: <https://www.kingcounty.gov/CoalCreekSewer>

Call or email: Monica Van der Vieren at 206-477-5502 or monica.vandervieren@kingcounty.gov.

Our team is ready to work with you for your translation needs. For translated materials, please visit <https://www.kingcounty.gov/CoalCreekSewer>

Nuestro equipo está preparado para trabajar con usted si necesita una traducción. Para obtener los materiales traducidos, visite <https://www.kingcounty.gov/CoalCreekSewer>

당사의 팀은 여러분과 협력하여 여러분의 번역 필요에 부응하고 있습니다. 번역된 자료를 보시려면 아래를 방문하십시오. <https://www.kingcounty.gov/CoalCreekSewer>

Наша команда готова помочь вам с переводом. Для получения переведенных материалов посетите <https://www.kingcounty.gov/CoalCreekSewer>

Nhóm của chúng tôi sẵn sàng làm việc với quý vị để đáp ứng các nhu cầu dịch thuật của quý vị. Để đọc tài liệu dịch thuật, vui lòng truy cập <https://www.kingcounty.gov/CoalCreekSewer>

我们的团队随时可以协助您的翻译需求，请在 <https://www.kingcounty.gov/CoalCreekSewer> 查看翻译的资料。

我們的團隊隨時可以協助您的翻譯需求，請至 <https://www.kingcounty.gov/CoalCreekSewer> 檢視翻譯的資料。