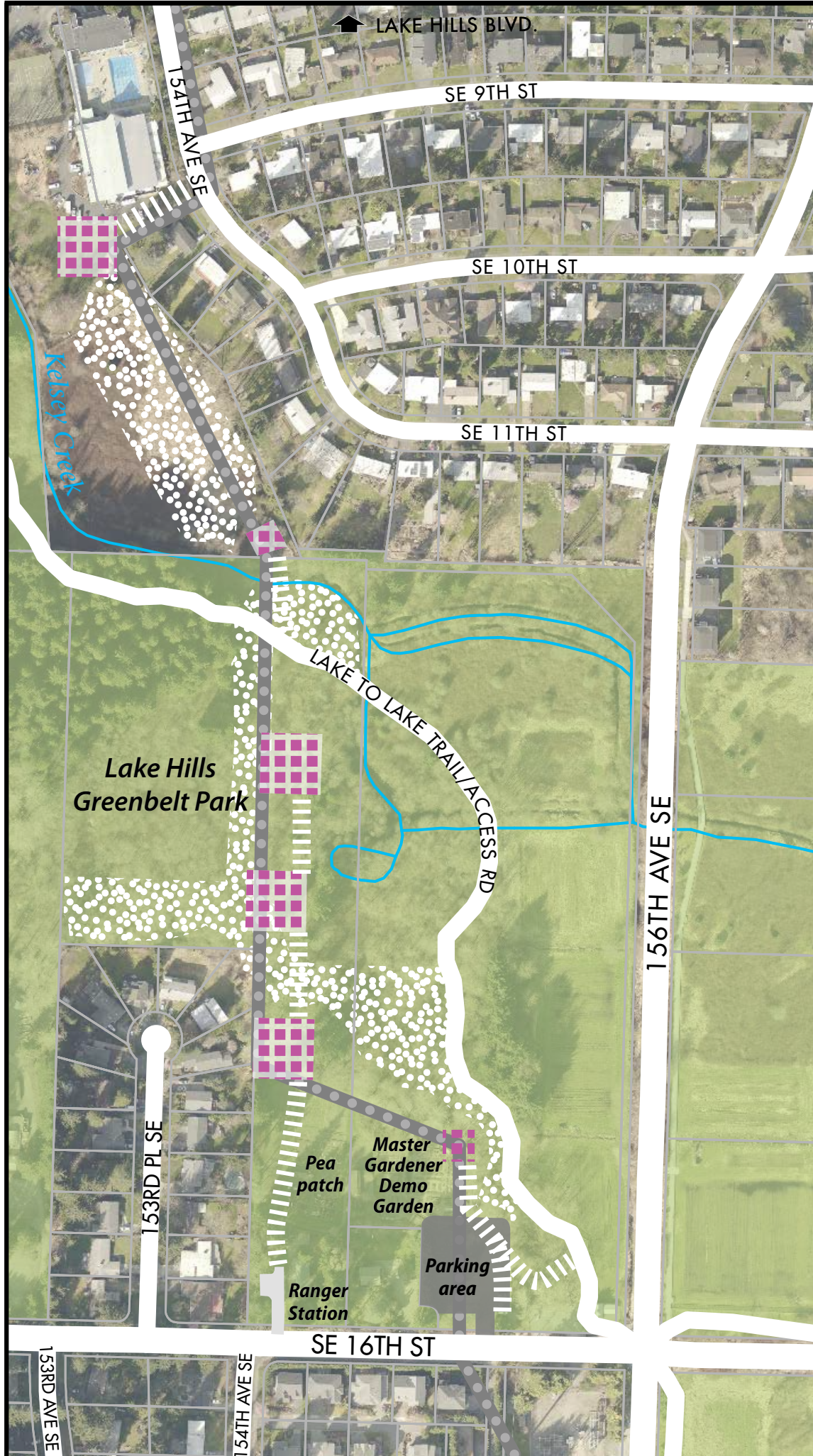









**King County**

Department of Natural Resources and Parks  
Wastewater Treatment Division

# Eastgate Interceptor Sewer Rehabilitation Project Phase III



## Project Area

-  Temporary work area
-  Temporary access road
-  Parcel boundary
-  Wetland
-  Existing below ground sewer line (no new construction)



0 100 200 300 Feet



January 2017

The information included on this map has been compiled by staff from a variety of sources and is subject to change without notice. King County makes no representations or warranties, express or implied, as to accuracy, completeness, timeliness, or rights to the use of such information. King County shall not be liable for any general, special, indirect, incidental, or consequential damages including, but not limited to, lost revenues or lost profits resulting from the use or misuse of the information contained on this map. Any sale of this map or information on this map is prohibited except by written permission of King County.

Data: King County GIS Datasets  
File: 1701\_8160w\_eastgate\_aerial\_11x17.ai

@KingCountyWTD



For information about the project  
Contact David Freed at:  
david.freed@kingcounty.gov or 206-263-9453