



FREMONT SIPHON

replacement project



King County

Department of
Natural Resources and Parks
Wastewater Treatment Division

Project Newsletter

SPRING 2013

King County Finalizing Design for the New Fremont Siphon

King County's project team is currently finalizing the design, acquiring permits and planning for construction. Project bids for construction will be solicited and reviewed in early 2014. Construction is anticipated to begin once the contractor is on board in summer 2014.

See inside for the new Fremont facility design!

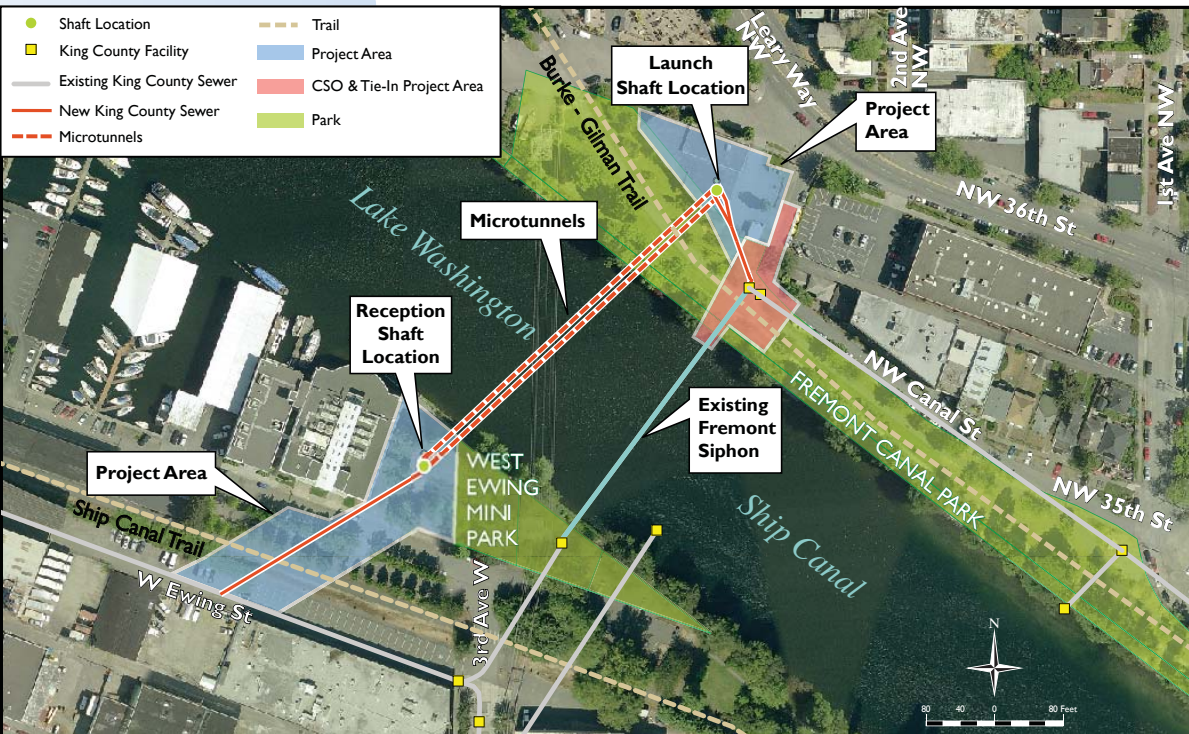
About the project

King County treats a lot of wastewater every day. King County's regional system serves over 1.5 million people, 17 cities and 17 local sewer districts. Every day, up to 220 million gallons of wastewater is collected from north Seattle alone and travels through the Fremont

Siphon to the West Point Treatment Plant in Discovery Park.

The Fremont Siphon is almost 100 years old.

The Fremont Siphon consists of two pipelines located in a tunnel underneath the Lake Washington Ship Canal. In 2011, the King County Wastewater Treatment Division (WTD) announced the need to replace the siphon pipelines with two new pipelines in a location west of the existing facility (see map at left).



For more information or to join the project email list:

Call: Adair Muth at 206-263-7319 or 206-255-8998 after hours

Email: adair.muth@kingcounty.gov

Web: Search "Fremont Siphon" on www.kingcounty.gov/

The new pipes will be installed by a method called microtunneling, which will require a shaft to launch the tunneling machine, and a second shaft to retrieve it. The launch shaft will be built on the Fremont side of the Ship Canal and the receiving shaft on the Queen Anne side. The project will also include construction of a new odor control facility in Fremont and requires the replacement of the City of Seattle's CSO (combined sewer overflow) outfall.

Creating a New Facility That is Part of the Fremont Community

As part of the Fremont Siphon Replacement project, King County will build a new odor control facility at the Fremont site. Community members, neighbors and park users joined the King County project team at a January 2013 design workshop to develop a design for this facility that fits with the community.

At the workshop, community members developed these common themes for the design:

- Extend the park feel to the site
- Fit with the historic nature of buildings in Fremont or develop a simple, modern feel
- Balance opening the view to the Ship Canal with screening the facility
- Minimize lighting onsite and minimize the pavement and fencing footprint

King County's project team used the community's input to develop two architecture and two landscape options. The community was invited to review these options at a March 26 open house and on the project website. (Visit the Meeting Calendar page on the website to view meeting materials.) People were encouraged to provide feedback on these options through April 12.

Architecture options included a building style that evokes historic Fremont structures and a second, modern-style building with a wood paneling feature that creates an organic feel to the building. The project team developed two plant palettes, the first reminiscent of a Pacific Northwest forests, and the second evoking a Pacific Northwest coastal environment.

People who participated in the review favored the historic building and Pacific Northwest Coastal plant palette.

Other elements developed with community input include:

- The building wall incorporated as part of the fence to create a simple appearance from Northwest 36th Street
- A window shaped and sized like the underground pipeline with view ports into the facility
- Lighting directed upward on the north wall of the building to provide some lighting on Northwest 36th Street but avoid glare
- Permeable pavement and grass pavement on the facility site for stormwater management



The front of the building at Northwest 36th Street and Leary Way Northwest will have a window to view into the facility.



The corner of Northwest 36th Street and 2nd Avenue Northwest features a landscaped area and new benches.

- A rain garden adjacent to the park to capture and infiltrate stormwater
- Landscaped area outside of the facility fence and new benches on Northwest 36th Street
- Vegetation that, when mature, will screen the facility from the park while allowing views to the Ship Canal from Northwest 36th Street
- Predominantly native plant palette with drought tolerant plants that support local wildlife
- A single driveway on Northwest 36th Street to reduce visible pavement and traffic on 2nd Avenue Northwest and Canal Street
- A mow strip along the south side of the property to reduce visual obstruction of a fence on the property line



The rain garden in the lower left corner will feature plants commonly found on the Pacific Coast.



From the Burke-Gilman Trail, the facility will eventually be screened by trees and vegetation.

Preparing for construction

King County will continue to engage the community as construction approaches. During construction, we will work directly with the community to minimize construction impacts whenever possible. Residents can expect:

- Advance notice of construction activities via mail, email, phone or flyer
- One-on-one problem solving with residents directly impacted by construction activities
- Project website and construction updates
- 24-hour construction hotline



Public art

The Fremont Siphon Replacement Project will also include a public art feature. King County works with its designated cultural services agency **4Culture** to plan and incorporate public art elements into County projects. An artist will be selected by May 30 by an artist selection panel, which includes three community members (one is a local artist), an artist with recent experience on the Murray CSO project and a representative from the Wastewater Treatment Division.



Department of
Natural Resources and Parks
Wastewater Treatment Division
King Street Center
KSC-NR-0505, 201 S. Jackson Street
Seattle, WA 98104-3855



See inside for the new
Fremont facility design!

FREMONT SIPHON • REPLACEMENT PROJECT • SPRING 2013

Visit us at the Fremont Fair June 22 and 23!

Get a virtual sewer pipe tour and learn how King County inspects over 350 miles of pipes with sewer camera robots and our closed circuit television (CCTV) sewer inspection truck. Talk to staff about the Fremont Siphon Replacement Project and learn how you can help protect water quality by being “stewards of the sewers.”



Fremont Siphon Replacement Project Timeline

2011	2012	2013	2014	2015	2016
Early design					
	SEPA and public comment period				
	Final design				
			Construction		



Alternative Formats

206-684-1280 (voice) or 711 (TTY)

Printed on recycled paper. Please recycle.

Produced by: King County IT Visual Communications & Web Group
File name: 1305_3242_FremontSiphonNews_NO_Indicia.indd mdev.skrau

