

KING COUNTY CONTRACTOR OUTREACH AND NETWORKING EVENT

CONTRACTOR AND CONSULTANT INFORMATION

APRIL 15, 2024

Architectural, Engineering and Professional Services Firms

CONTRACTOR AND CONSULTANT INFORMATION

Water, Wastewater & Recycled Water Systems Engineering Capabilities



Wastewater Treatment, Recovery and Reuse



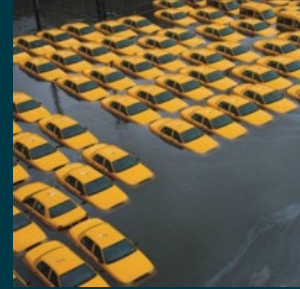
Biosolids, Energy Recovery and Optimization



Drinking Water Treatment and Supply



Advanced Treatment and Desalination



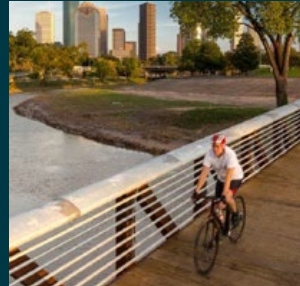
Resiliency and Sustainability



Conveyance, Collection and Distribution



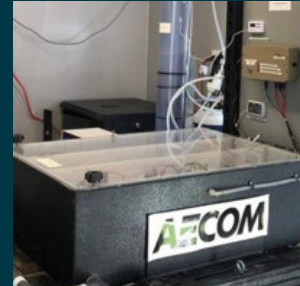
Dams, Hydropower and Levees



Watershed and Ecosystem Management



Ocean Outfalls



Research and Innovation

Water

Water, Wastewater, Recycled Water & Stormwater

- ▶ Design, Planning & Engineering
- ▶ Research and Development
- ▶ Design-Build
- ▶ Geotechnical Engineering
- ▶ Program/Construction Management
- ▶ Asset Management

AHAVAH AUTOMATION

- . **Process Controls Engineering**
- . **Electrical Engineering Design**
- . **Mechanical Engineering Design**
- . **Related Engineering Services**
- . **Bidding Period Services**



Contact:

Andreea Pineda Romero, President
andreea.pineda@ahavahmhs.com
262-215-7360

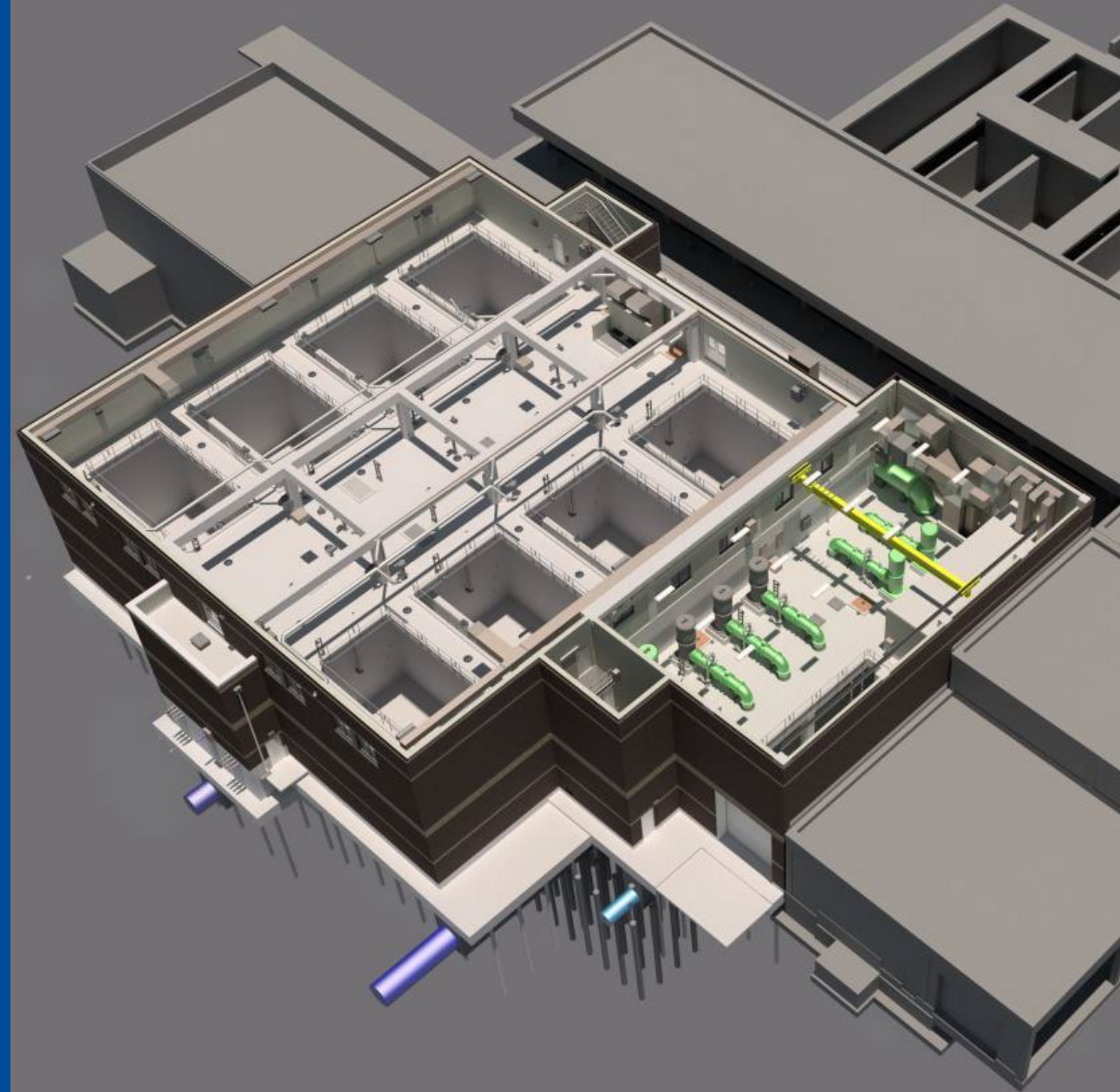
www.ahavahmhs.com

Company: **BLACK & VEATCH**

Services Offered **Planning, Design,
Construction Management, Alternative
Delivery, Owner's Rep/Advisor of Water,
Wastewater, Stormwater Infrastructures**

Contact Information **SYLVESTER HSU
(HSUS@BV.COM , 206-801-1777)**

Website address: **BV.COM**



CHUDGAR ENGINEERING COMPANY

1510 140th Ave NE Suite 203 Bellevue WA 98005

Contact: Samir Chudgar, PE, SE

Phone: (425) 590-9650 Email: samir.chudgar@chudgar-eng.com

www.chudgar-eng.com

Certified SBE /DBE / MBE (WA State) & SCS (King County and Port of Seattle)

Structural Engineering

Infrastructure Projects

Buildings, Bridges, Transportation Structures, Retaining Walls
Parking Garages and Walkway Bridges
Plans, Specifications and Estimates

Shop Drawings
Value Engineering
Inspection and Assessment
Shoring Design
Building Permits

—CHUDGAR—



consor

Contact Information:

bryan.green@consoreng.com

www.consoreng.com



Planning



Design



Construction
Services



Structural
Assessment



Strategic Planning
& Communications



DLR GROUP

ARCHITECTURE ENGINEERING PLANNING INTERIORS

Justin Stranzl
Principal
503-750-3471
jstranzl@dlrgroup.com

www.dlrgroup.com



EVOLVE 8

LANDSCAPE ARCHITECTURE

P | 206.304.2120

E | NANCYGODIN@GMAIL.COM

W | ROOTEDTOEVOLVE.COM



- MEP Engineering
- Sustainable Design
- LEED, ILFI Design & Support
- Clean Buildings Compliance, Energy Audits
- 300+ King County Projects
- Certified SCS & SBE



King County AFIS Lab, LEED Gold

FSi Engineers
206.622.3321
FSi-engineers.com

h i n g e s t u d i o
A R C H I T E C T U R E + D E S I G N
w w w . h i n g e s t u d i o . n e t

Services:

Architecture with a specialty in Adaptive Reuse and Modification of Existing Buildings, Planning, Feasibility, Interior Space Planning, Interior Architecture

Kate Cudney
Founder and Principal Architect
206-558-2978
kate@hingestudio.net
www.hingestudio.net



**HURTADO
CONSULTING**

Certifications: DBE/MBE Certified in WA, OR, CA, and ID)
Contact: Rene Hurtado, P.E.
Contact Cell No: (360) 839-4727

Pre-Construction:

- **Early Work Planning**
- **Phasing/Staging**
- **Scheduling (CPM, Linear)**
- **Cost Estimating**
- **Conceptual 3-D/4-D Modeling**
- **Risk Analysis/Mitigation**
- **Constructability Reviews**
- **Procurement**

Construction Management:

- **Design/Construction Coordination**
- **Construction Plan Reviews**
- **3-D/4-D Modeling**
- **CPM Schedule**
- **Document Control**
- **Contract Implementation & Monitoring**
- **Construction Inspection**
- **Change Order Tracking and Pricing**
- **Claim avoidance**

M **AHOGANY** **ENVIRONMENTAL & ASSOCIATES, LLC**

We are a small female owned firm that provides the following services:

NEPA Documentation

Section 404/10 Permitting

Section 408

Biological Assessments

Environmental Compliance

Wetland/Stream Delineation Support

Natalie Edwards

Natalie@mahoganyenvironmental.com

<https://www.mahoganyenvironmental.com>

(470)926-6539



Mead & Hunt

CONTACT INFORMATION



ROSS VARIN, PE

971-378-6786

ross.varin@meadhunt.com

www.meadhunt.com

LOCAL SERVICES

- Architectural Design
- Airport Engineering
- Electrical and Process Instrumentation
- Environmental Justice Planning
- Flood Risk Reduction
- GIS
- Historic Preservation
- Hydraulic and Hydrologic Modeling
- Municipal Infrastructure Improvements
- Stormwater Management
- Structural Engineering
- Wastewater Conveyance and Treatment
 - Biogas Upgrading and Usage
 - Odor Control
- Wastewater Reuse
- Water Resources
- Water Supply, Treatment, Storage, and Conveyance

Parr Excellence (Parr) has dedicated decades of our professional careers with the goal of enhancing and restoring important fish populations for future generations.

Services

- Aquatic Habitat Enhancement
- Floodplain Reconnection
- Fish Passage
- Dam Removal
- Large Wood Design
- Geomorphic Assessment
- Watershed Planning
- 1-D and 2-D Hydraulic Modeling
- Flood Risk Analysis
- Construction Oversight
- CAD and GIS Services
- Topographic and Bathymetric Survey
- SFM Data Collection
- Lidar Data Collection

Contact Us

173 N Main Ave, White Salmon WA
(509) 281-3257 / parr@moreredds.com
moreredds.com

Small Business Enterprise (SBE)
King County Small Contractor and Supplier (SCS)
HUBZone Certified Business



PARR
excellence



ELECTRICAL CONSULTING ENGINEERS

Contact Information

Flaviano Reyes, Principal, Senior Electrical Engineer – freyes@reyeseng.com

Emily Fisher, Marketing Coordinator – efisher@reyeseng.com

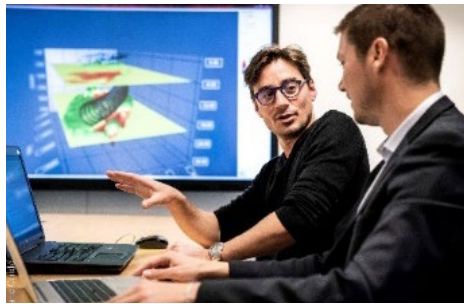


reyeseng.com

DESIGN SERVICES WE OFFER:

Electrical Distribution Systems
Emergency Generator and UPS Systems
Lighting and Lighting Control Systems
Telecommunications Systems
Security, Access Control and Video
Surveillance Systems
Fire Alarm Smoke Detection, Voice
Evacuation, and Mass Notification Systems
Audio/Visual Systems
Photovoltaic (PV) Systems
Micro Grid Systems
Electric Vehicle (EV) and Battery Electrified
Bus (BEB) Charging Systems
Lightning and Grounding Systems
Low Voltage Special Systems
Central Battery Inverter Systems

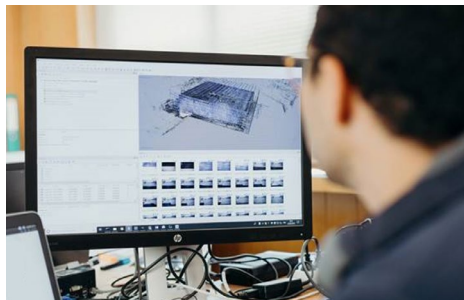
SIXENSE: WHO WE ARE / WHAT WE DO



Engineering



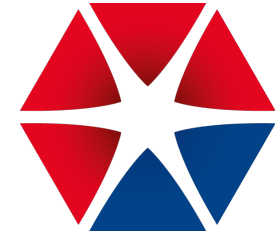
Monitoring



Mapping



Digital



sixense
sixense

We are committed to providing high-quality **automated real-time geotechnical, structural, and environmental monitoring services** to our clients across the continent. Our company is also highly recognized as an industry leader in **asset management** and has offered state-of-the-art services to prominent infrastructure owners for the last 20+ years.

Contact us:

northernamerica.sixense-group.com

+1 206-491-5053

Raphael.Victor@sixense-group.com



National Energy Services & Engineering Firm

- Public company (NASDAQ: WLDN)
- 1,600 employees across 60 U.S. offices
- Founded 1964 with 360,000 projects delivered

**EV Charging Infrastructure M/WBE Subcontractors
we are Seeking for KC Metro NRV project**



Electrical Contractors



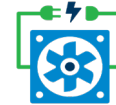
EVCS Commissioning



Civil Work (minor)

Willdan Performance Engineering Division

Energy and Infrastructure Solutions



Energy Efficiency Retrofits



Facilities Decarbonization



Renewable Energy Projects



EV Fleet & Charging Infrastructure

OUR VISION

Willdan transitions communities to clean energy and a sustainable future.



Arup US, Inc

1946

Founded by Sir Ove Arup

76 years

Of independent ownership

8,000+

People globally

95

Offices

34

Countries

16

Offices in the Americas

2,000+

People in the Americas

38

Years in the Americas

\$2.5bn*

Revenue

**Revenue for 2021/2022 financial year*

Our markets and services

Our broad expertise allows us to offer an extensive range of services valued by global markets.

Markets

Energy

Water

Resources

Rail

Highways, Roads
& Streets

Aviation

Markets

Property

Healthcare

Science

Industry

Technology

Cities

Services

Planning

Design

Advisory

Technical Specialist

Climate & Sustainability

Digital

Contact: Zaheer Shaikh
zaheer.shaikh@arup.com
+1 415 659 4996

www.arup.com

Engineers, Scientists, Consultants, Constructors

Serving Clients Locally and Globally

Wastewater Treatment

Solids/Energy

Drinking Water

Reuse

Wet Weather

Conveyance Infrastructure

Water Resources

Utility Performance

Site Investigation and Remediation
and Solid Waste

Compliance Permitting

Industrial Water

Integrated Project Delivery



Kevin Stively, PE, PMP | Vice President

KStively@brwnncald.com | T 206.749.2262



Employee Owned | BrownandCaldwell.com



WATER

Our focus. Our business. Our passion.

For more than 90 years, we have helped millions of people lead better lives through the availability of clean water.

For more information, please contact Trish Burrell at TBurrell@carollo.com | 503.290.2821 | carollo.com



Service Offerings

- Asset management.
- Climate change and resilience.
- Collaborative project delivery.
- Construction services.
- **Conveyance and distribution.**
- Drinking water.
- Electrical and programming services.
- Operations services.
- **Planning.**
- Private sector services.
- **Program management.**
- Renewable energy.
- Research and development.
- **Resilience and sustainability.**
- **Wastewater.**
- Water resources.
- **Water reuse.**



Making the World Better, Safer & More Resilient

listen. think. deliver.

We are a privately owned engineering and construction firm providing legendary client service and smart solutions in **water, environment, transportation, energy and facilities**. Passionate about our work and invested in each other, we are inspired to think and driven to solve the world's environmental and infrastructure challenges.



Brian Murphy, PE

PNW Regional Client Service Lead

Direct: 503.205.7414

Cell: 503.847.6010



**CDM
Smith**

cdmsmith.com

A decorative horizontal bar with a blue-to-grey gradient is located above the 'Services Offered' header.

Services Offered:

- Architecture
- Aviation
- Bridges
- Construction Management
- Design Build
- Digital Infrastructure Solutions
- Environmental Planning
- Highways
- Infrastructure & Mobility Equity
- Program Management
- Tolls
- Transit & Rail
- Tunnels
- Water

Jon Raduenz
(206) 604-3688
jraduenz@hntb.com

<https://www.hntb.com/>



About HDR



107

Years in Business



200+

Global Offices



12K+

Employees

Contact Us

wamktg@hdrinc.com

425.450.6200

hdrinc.com

Our Markets

- Water
- Transportation
- Building Engineering
- Architecture

Our Services

- Engineering
- Planning and Consulting
- Program Management
- Environmental Services
- Asset Management
- Real Estate/Right-of-Way
- Architecture
- Commissioning and Operations
- Economics and Finance
- Sustainability and Resiliency
- Coastal Engineering and Restoration

Notable Rankings

No. 1

Largest 100% Employee-Owned Architecture/Engineering Firm, *National Center for Employee Ownership, 2023*

No. 2

Top Architecture/Engineering Firms, *Building Design+Construction, Giants 300, 2022*

Jacobs Engineering Inc.

Contact Info: Veena Rao, Sales and Client Solutions

veena.rao@jacobs.com

www.jacobs.com

King County Contractor Outreach and Networking Event

April 15, 2024

Services Offered

- Planning
- Alternative Analysis
- Grant Funding Application
- Architectural Engineering & Consulting
- Program Management
- Construction Management
- Progressive Design Build
- Design-Bid-Build



Kennedy Jenks

SERVICES OFFERED:

Planning | Design | Program Management

Owner's Advisory | Construction Management

CONTACT INFO:

Chris Baersten – Planning, Design, Program Management, and Owner's Advisory

chrisbaersten@kennedyjenks.com

206.753.3412

Sam Yaghmaie – Construction Management

SamYaghmaie@kennedyjenks.com

206.898.5594

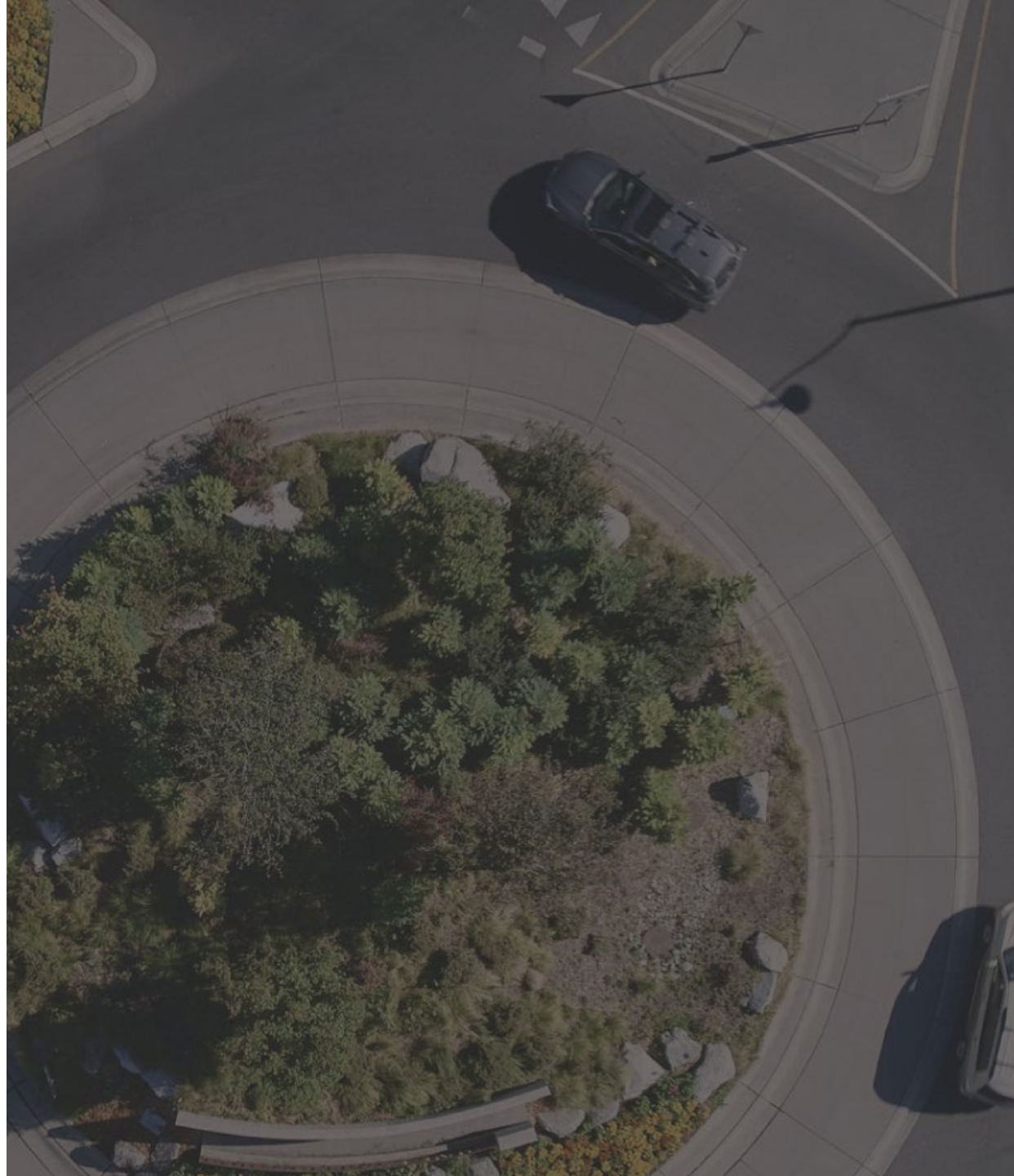
Parametrix

let's create tomorrow, together



Engineering Consulting

206.394.3700 | parametrix.com





SERVICES

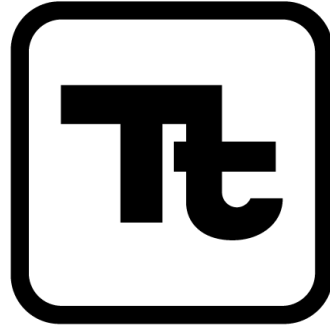
- Wastewater Treatment Design
- Conveyance Systems Design
- Facility & Master Planning
- Asset Management
- Program Management
- Construction Management
- Permitting



STEPHEN NUSS

Bellevue, Washington
stephen.nuss@stantec.com
(425) 289-7315

<https://www.stantec.com/en>



TETRA TECH

SERVICES

Consulting and engineering firm, focusing on water, wastewater, environment, sustainable infrastructure

CONTACT

Grizelda Sarria, PE
206-883-9412

<https://www.tetrattech.com>



Engineering Solutions for

- Transportation
- Industrial + Manufacturing
- Buildings + Sites
- Water

Contact

Phone: 206.466.1028

Toll-Free: 800.247.1714

Email: info@tkda.com

2025 1st Avenue, Suite 270

Seattle, WA 98121

WWW.TKDA.COM

Consulting Firms

CONTRACTOR AND CONSULTANT INFORMATION



ACTIONABLE INSIGHTS DATA

BRIDGING DATA AND OPPORTUNITY

Service Offerings

- **Central Repository Development:** Building a comprehensive platform that serves as a centralized database for procurement opportunities, aimed at small, diverse, and veteran-owned businesses.
- **Data Visualization Platform:** Utilizing cutting-edge technology to provide clear, accessible insights and analytics on procurement processes, making it easier for businesses to navigate the procurement landscape.
- **Enhanced Visibility for Small and BIPOC Businesses:** Implementing strategies and tools to increase the visibility of these businesses to procurement officers and contractors, ensuring fair access to contracting opportunities.
- **Streamlined Procurement Processes:** Incorporating automatic filtering based on NAICS codes and other criteria to simplify the identification and engagement process between businesses and procurement opportunities.
- **Community-Based Research Consortium:** Facilitating a collaborative network of state and local entities to collectively identify and address gaps, share opportunities, and promote best practices within the procurement ecosystem.
- **Policy Goals and Compliance Support:** Offering a platform that assists government agencies and other entities in meeting their supplier diversity goals, aligning with policies like the DES's supplier diversity policy to encourage purchases from diverse businesses.
- **Economic Growth and Equality:** By breaking down barriers and simplifying the procurement process, your initiative contributes to the economic growth and equality, enabling small and BIPOC-owned businesses to thrive.
- **Educational and Support Resources:** Providing resources, workshops, and guidance to help businesses understand procurement processes, and to support procurement officers in engaging with diverse suppliers effectively.
- **Direct Access to Procurement Opportunities:** Offering small, diverse, and veteran-owned businesses direct access to a wider range of procurement opportunities, thereby increasing their market visibility and potential for growth.
- **Inclusive Economic Environment Advocacy:** Working to create an economic environment that encourages growth and innovation across all sectors of the community, promoting inclusivity, transparency, collaboration, and innovation at every level.



DeiMarlon Scisney

Founder/CEO

H.O.P Technology Solutions

(812) 568-4411

info@hopservices.us

www.hopservices.us



AVI Systems, Inc.

A Unique Approach Enterprise Solutions and Managed Services



Audiovisual



Unified
Collaboration



Digital Media



Microsoft
Consultancy



Broadcast



Enterprise



Managed
Services

www.avisystems.com

Main: 855-825-6030



Data Entry Premier

Here to assist contractors with projects needing efficient data management by producing **reliable data** and **maintaining confidentiality**.

Services:

- Manual Data Entry
- Document Scanning
- Electronic Filing



Data Entry Premier

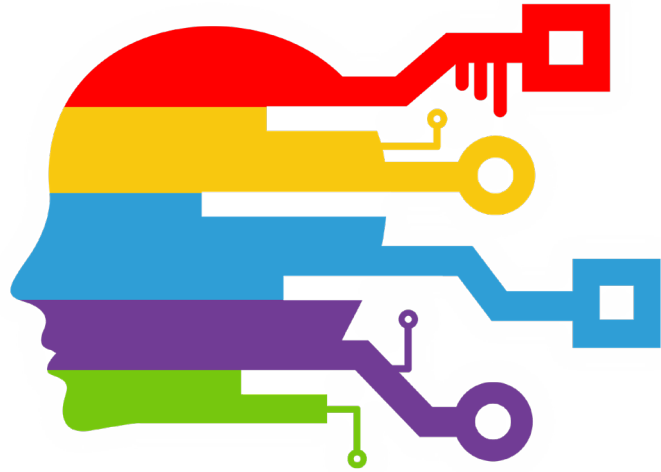
Phone: 206-638-5114

Site: data-entry-premier.com/data-entry

Email: data5entrypremier@gmail.com



Who we are



Digitech Labs

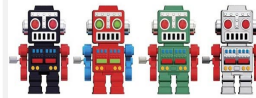
Balan (Ramachandra Balakrishnan) at
Balan@digitechlabs.com.



Digital SI : Consulting & Solution Led approach to Engagements



Technology as an Enabler with focus on Business value and Customer Success



Faster, Better and Integrated; Deep SME ecosystem across digital spectrum



Promoted by Executives with >20 years hands-on experience in Hitech, Product & Service industries



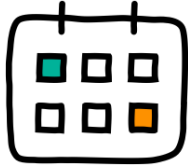
Minority & Woman Led Small Business based out of Redmond, WA with offices in Atlanta, GA & Hyderabad, India



EAGLE HILL



OUR



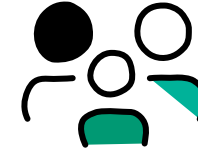
20+ Years

Delivering results for our clients, in a range of industries



96%

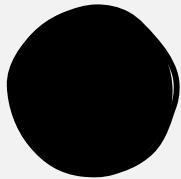
Clients who report that they would "definitely work with [Eagle Hill] again."



3 Offices

Seattle, DC & Boston provide best-in-class consulting locally and across the US

OUR SERVICES



STRATEGY

- ✓ Business Transformation
- ✓ Strategic Planning
- ✓ Strategy Implementation
- ✓ Organization Design
- ✓ Operating Model/Governance



CHANGE

- ✓ Change Enablement Strategy
- ✓ Change Management Office
- ✓ Training & Strategic Communications
- ✓ Stakeholder Management
- ✓ Change Adoption & Analytics



PERFORMANCE

- ✓ Operational Assessment/Analysis
- ✓ Process Improvement
- ✓ Program & Project Management
- ✓ Technology Enablement
- ✓ Customer Experience



TALENT

- ✓ Talent Strategy
- ✓ Workforce Planning
- ✓ Employee Experience
- ✓ Culture Change & DE&I
- ✓ Performance Management

OUR AWARDS

ALM Intelligence "PaceSetter in Employee Well-Being" (2022)

Forbes "America's Best Management Consulting Firms" (2023, 2022, 2021, 2020, 2019, 2018, 2017, 2016)

ALM Intelligence "Leader in Change Management and Communications" (2019)

Washington Post "Top Workplaces" (2023, 2021, 2020, 2019, 2018, 2015)

Vault "Consulting 50" (2023, 2022, 2021, 2020, 2019, 2018, 2017, 2016)

Vault "#1 Best Consulting Firm for Women" (2023)

www.eaglehillconsulting.com



LIZ SCHROEDER
ESchroeder@eaglehillconsulting.com

MADELEINE WATSON
MWatson@eaglehillconsulting.com

EMMA COWAN-YOUNG
ECowan-Young@eaglehillconsulting.com



SERVICES

- Community engagement
- Communications
- Facilitation
- Research
- Graphic design
- Digital engagement

EnviroIssues is a certified Disadvantaged Business Enterprise (DBE) and a Minority/Women Business Enterprise (MWBE) in Washington and Oregon.



 SEATTLE | PORTLAND

 enviroissues.com

 (206) 269-5041

IMAGINiT TECHNOLOGIES



- Autodesk Platinum VAR
- 40+ years of experience
- 35,000+ satisfied customers
- Autodesk's largest Services Partner
- Largest team of technical experts in the industry (135+)
- Dedicated Government Sales Team
- Dedicated Technical Support team (16)
- Customer Advocacy team (6)
- Dedicated Data Management, Facilities Management, Simulation and Software Development teams
- 32+ Autodesk Authorized Training Centers, 12 Mobile Labs, 8 Online Labs
- ASCENT – Autodesk Authorized Publisher
- WWW.imaginitt.com

Contact Information:

Tiffany Gemar SLED Government Manager

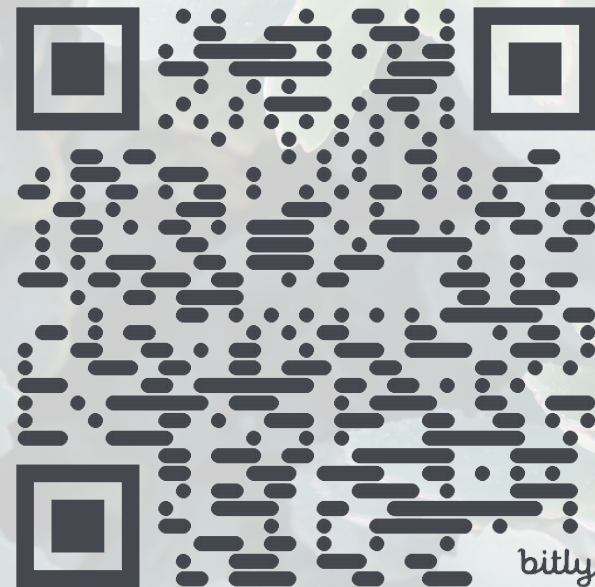
tgemar@rand.com or info@rand.com

360- 502- 8066

MAHOGANY TUCKER

mommanirvana.com | mommanirvana@gmail.com

Change Management | Community Relations | DEI | Equity |
Facilitation | Organizational Development | Public Outreach |
Social Justice | Strategic Planning |



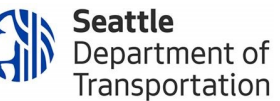


King County Clients

King County

- King County IT
- Wastewater Treatment Division (WTD)
- Haz Waste Program
- Dept of Natural Resources & Parks (DNRP)

Other Clients



ONIT MANAGEMENT CONSULTING

Project and Program Management

Business Process Improvement (BPI)



Organizational Change Management (OCM)

Instructional Design (ID)

- Puget Sound area based
- Owned and run by experienced consultants – experts who hire experts
- DBE Certified (WA and Calif.) and MBE Certified (WA)
- SBE (SCS) Certified (King County)
- Dedicated to the institutions that keep Washington strong!

www.onitmc.com

info@onitmc.com

206-257-2233



PAX ENVIRONMENTAL, INC.

Environmental Consulting, Planning, & Permitting

Socioeconomic Impact

Cultural Resource Services

Wetlands Science & Jurisdictional Delineation

Ecological Restoration

Construction Monitoring



PIVOTAL

C O N S U L T I N G



THE ACADEMY

Helping customers succeed.
It's what we do.

Our Expertise:

STRATEGY & IMPLEMENTATION

Portfolio & Program Management Strategy Development
Systems & Vendor Selection Project Recovery

OPTIMIZATION

Business Analysis
Process Mapping & Improvement

TRANSFORMATION

Readiness
Change Management Training & Adoption

CLOUD SERVICES

Microsoft 365 Modern Workplace, Automation, Business
Apps, Analytics

Brian Romas bromas@pivotalconsults.com
206.261.3048

Andrew Hoang ahoang@pivotalconsults.com
206.369.5659

Planning & Management Services, Inc.

P&M offers specialized project delivery services including:



Project Management



Integrated Total Cost Management



Scheduling



Cost Estimating



Earned Value Management



Risk Assessments and Stochastic Analysis



Claims Analysis and Management



Project Administration and Document Controls



www.pmsvs.com

Contact:

main@pmsvs.com

253-248-0038



ROCK
PROJECT MANAGEMENT SERVICES
L.L.C.

ROCK PROJECT MANAGEMENT SERVICES, L.L.C.



ADDRESS:

1601 E Valley Rd, Suite 110
Renton, WA 98057

PHONE NUMBER: 425.572.6878

WEBSITE: www.rockpmservices.com

Planning



- Conduct Project Start-up
- Initiate Community & Staff Engagement
- Develop Comprehensive Plan
- Conduct Existing Condition Assessments
- Prepare Pre-development Schedule
- Prepare Pre-development Budget
- Develop Contracting Options Analysis
- Prepare RFQs for Design Team Selection
- Coordinate Planning Phase Stakeholder Engagement
- Initiate Planning Phase Permitting Agencies

Design



- Facilitate Design Team Meetings
- Prepare Design Phase Budget Estimates
- Review Design for Cost Efficiencies
- Develop Initial Cash Flow Projections
- Facilitate SEPA Process
- Prepare Detailed Preliminary Project Schedule
- Conduct Value Engineering Exercise
- Conduct & Facilitate Constructability Reviews
- Establish Construction Phasing & Logistics Plans
- Manage Permitting & Environmental Compliance

Construction



- Market Bidding Opportunities
- Recommend Contract Awards
- Negotiate Contracts
- Facilitate Weekly Progress Meetings
- Manage Project Controls / Project Documentation
- Track Schedule Compliance
- Manage Budget Contingencies
- Manage Cost Control Program
- Review & Approve Pay Applications
- Monitor Submittals & RFIs
- Provide QA/QC Inspections
- Attend Preconstruction & Preinstallation Meetings
- Provide Inspection & Testing Oversight
- Assess Project Risks
- Provide Construction Reporting
- Manage Special Inspections Consultants

Closeout



- Facilitate Final Commissioning Activities
- Conduct Final Inspections & Punchlisting
- Address Corrective Actions (if any) & Issue Notice of Completion
- Ensure Warranties & Guarantees are Issued
- Obtain Complete O&M Manuals
- Conduct Furniture Installation Coordination
- Coordinate Move-in Activities
- Ensure Complete As-builts are Provided to Owner
- Complete Final Project Financial Information
- Conduct Post-Occupancy Interviews
- Conduct & Document Lessons-Learned Workshop
- Issue Final Project Report
- Provide Construction Reporting
- Manage Special Inspections Consultants
- Administer OFCI Contracts



ROOTS Project Controls Services (PCS), LLC established in February 2020. ROOTS specializes in Project Controls Services as a Client/Owner Representative from Alternative Analysis to Design to Construction. Specific services offered include:

- Project Planning and Scheduling
- Cost Estimating and Quantity Surveying
- Project Controls Plan Development
- Process and Guideline (Project Controls/Project Management) Improvement Support
- Document control

www.rootspcsllc.com

Richard Westlind

Rwestlind@rootspcsllc.com



SBS

STRATEGIC BUSINESS
SOLUTIONS

Small Enough To Know
You. Big Enough To
Serve You.

20 + Years of Expertise in:

- Project Management & Change Management Staffing Services
- SCADA Related Services

Subcontractors and Suppliers

CONTRACTOR AND CONSULTANT INFORMATION



A R O C K
TECHNOLOGIES

Certified Women Business
Enterprise Low Voltage Electrical
Contractor that specializes in Fire
Protection and Security Systems.

AROCKTECH.COM

SERVICES OFFERED

Asset
Protection &
Access control



Fire Alarm &
Life Safety



Monitoring &
FireWatch



System
Service/Inspections
and testing



A R O C K
TECHNOLOGIES

Contact us to get more info

✉ info@arocktech.com

📍 4120 SE International Way STE A106,
Milwaukie OR, 97222

☎ (503) 912-2629

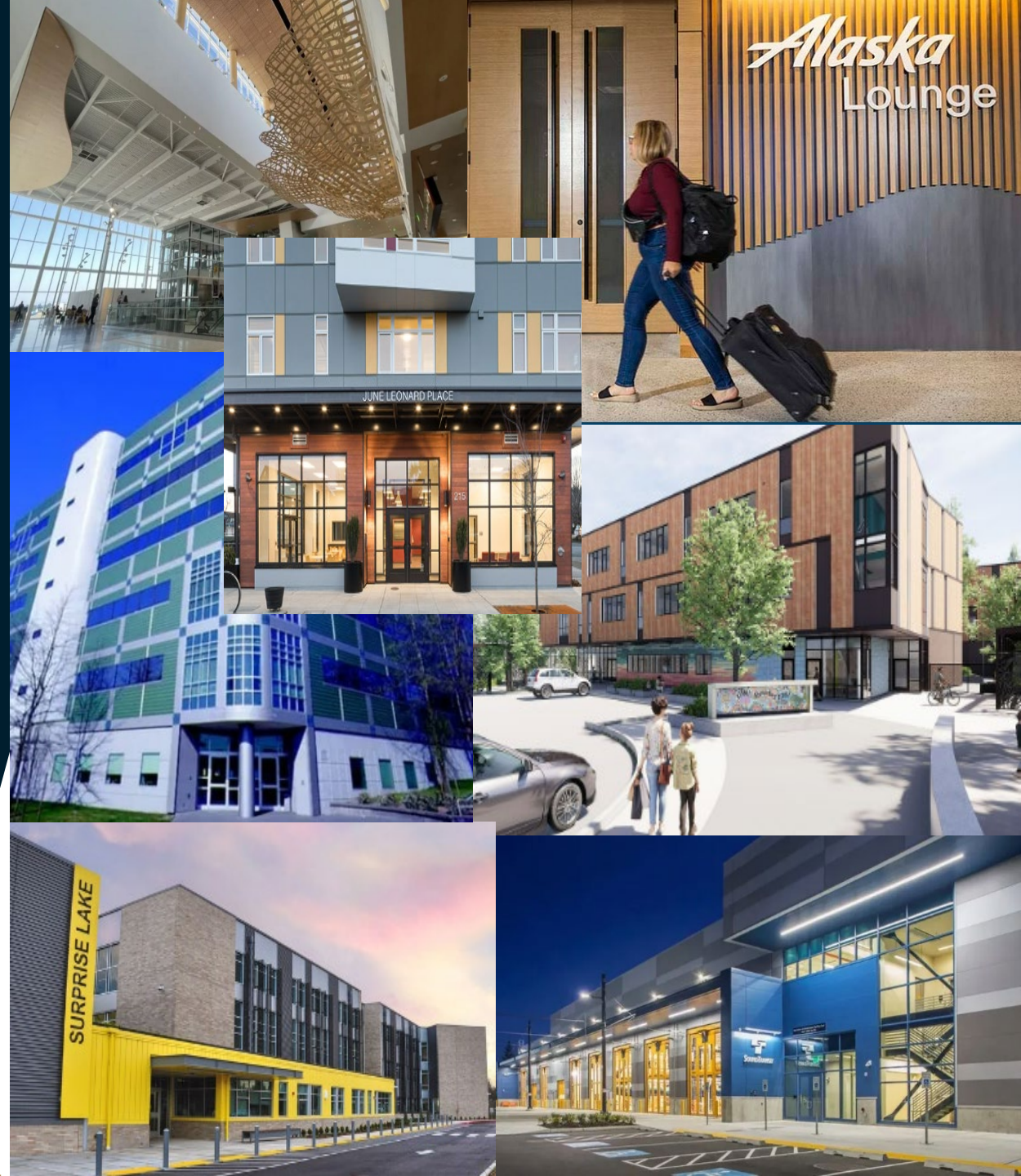
🌐 arocktech.com



WMBE CERTIFIED!!

OUR TEAM PROVIDES
THE FOLLOWING
SUPERIOR SERVICES:

- POST CONSTRUCTION
CLEANING • STREET
SWEEPING •
CONSTRUCTION
SUPPORT SERVICES
LABORERS/HOIST
OPERATORS • JANITORIAL
& DAY PORTER
SERVICES
- MOVE IN/MOVE OUT
CLEANING • CARPET
CLEANING/FLOOR CARE
PLANS/STRIP/WAX
- COVID-19 SANITIZING
• PRESSURE
WASHING/WINDOW
CLEANING
• HOMELESS
ENCAMPMENT
CLEANUP



SCAN FOR MORE INFO

INFO@CITYGROUPSOLUTIONS.COM

WWW.CITYGROUPSOLUTIONS.COM



Providing **TEGG**[®] Services

Lisa Welcome

lwelcome@cochraninc.com

206 580 5997

www.cochraninc.com

Electrical.
Service.
TEGG.
Communications.
Security.
Wireless.
DAS.
Audio Visual.
Shore Power.
BIM.
LEED Building.
Prefabrication.
Trusted.

Green Latrine

Portable Toilets

Green Latrine Portable Toilets is a local women and minority-owned business (M5F0026591). We service anywhere from Everett to Lakewood.

- Standard Toilets
- Single and Double Hand Washing Stations
- Crane Lifiable Toilets
- Elevator Toilets
- Trailer mounted toilets

Phone: 206 397 0336

Email: info@gogreenlatrine.com



KCD Trucking, LLC is a locally owned and operated DBE certified construction support company with expertise in Dump Trucking, Street Sweeping, Water Trucking, Snow Plowing & Dispatch.

We are a dedicated team striving to bring growth to our community, while helping to maintain existing companies. We only employ highly skilled drivers. We promote a high standard of professionalism that produces effective, consistent and measurable long-term results for each project. When there is a need, we also utilize other DBE Trucking & Sweeping companies to assist in meeting project goals.



Some of our project experience.....

- **SR 99 Demolition**
- **I-5 Portland Ave**
- **70th Ave Bridge Replacement**
- **F200**
- **SR509**
- **167**
- **C Concourse and more.....**

Contact us:

Kelly Jefferson - President & CEO

kellyj@kcdtruckingllc.com

DeChelle Henderson - Project Manager

dechelleh@kcdtruckingllc.com



Empowering your enterprise to lead the charge in sustainability by taking significant steps in energy efficiency, minimizing your brand's impact on the planet, and becoming a trailblazer in net-zero initiatives.

We Are Your Clean Energy Manufacturer and Distributor

Eco-Friendly Solutions

- LED Lighting
- Solar Panels
- Electric Vehicle Charging Stations
- Off Grid Battery Storage & Energy Management

Eco-Friendly Strategies

- Energy Audits
- Financing
- Rebates
- Incentives
- Customer Support
- Technical Support
- Network Management

Previous Projects

2022

BMW - NW
Tacoma Campus

2021

Apex Anodizing
Production Facility

2020

Holy Family
Catholic School



Satisfied Clients



rahsaan@ledtrail.com



253-208-0274



scott@ledtrail.com



253-221-1780



ledtrail.com

Diversity Equity and Inclusion Initiatives

- Hire Diversely within our Enterprise
- Mentor program to help other WBE/DBE small businesses understand financing and access capital
- Utilize exclusively WMBE sub-contractors

LED Trail Team

- Sales/Operations - 4
- Executive 2
- Legal/Accounting - 3

LED TRAIL DRIVES POSITIVE CHANGE IN ENERGY EFFICIENCY AND PUBLIC HEALTH, AIMING FOR A GREENER WORLD THROUGH OUR INNOVATIVE PRODUCTS AND NET-ZERO STRATEGIES.

Morgan Block Capital, LLC



- Carpet cleaning services
- Chimney cleaning services
- Lawn maintenance services
- Contract staffing services
- Merchant Wholesale distribution
- Building Material and Supplies
- Garden Equipment and Supplies
- Industrial uniform supplies
- Linen supplies

Abel Kifle, Abel.Kifle@morganblockcapital.com, 206-834-5711

Morganblockcapital.com



PRIME
ELECTRIC

SERVICES

- Industrial Automation & Control Systems
- Motor Controls & Variable Frequency Drives (VFDs)
- Data & Communication Cabling
- Heavy Industrial
- Industrial Controls
- Underground Trenching & Duct Banks
- Traffic Signalization
- Utilities

CONTACT

Bryan Olson

425.864.1031

bolson@primee.com

Shawn Martin

425.941.4296

shawn.martin@primee.com

WEBSITE

primee.com



RMC Floral Designs

Services Offered:

➤ Floral Arrangements

Phone: 425-528-6810

Instagram: RMC Floral
Designs



General Contractors

CONTRACTOR AND CONSULTANT INFORMATION



BRATTON CONSTRUCTION, LLC

Primary Contact: Sharon Maxwell, CEO
sharonmaxwell@brattonconstruction.com
(503) 281-0226

Secondary Contact: Liana Spinner,
Executive Administrator
Lianas@brattonconstruction.co
(503) 281-0226

<https://www.brattonconstruction.net>



General Contracting Services

- Construction Services and Layout
- Control
- Engineering Management
- Project Budgeting
- Site Design
- Specialty General Contractor
- Subcontracting Opportunities
- Utility Installation
- Remodeling - New construction



Excavation, Paving and Concrete Services

- Aggregate Bases
- Asphalt Paving
- Concrete Services - Flatwork curbs
- Excavation
- Guardrail, Signs, Excavation
- Land Clearing
- Site Concrete



Exterior Remodel, Painting, Plumbing and HVAC Services

- Fencing-Chain link-Wood
- Painting Residential/Commercial
- Plumbing Fixture, repairs, maintenance
- Plumbing Services- Residential/Commercial
- Water Lines, Waste, Sewer Work, Vents

CENTENNIAL CONTRACTORS ENTERPRISES, INC.



CENTENNIAL
A BILFINGER COMPANY

SEEKING QUALIFIED SUBCONTRACTOR PARTNERS IN THE FOLLOWING DISCIPLINES:

- Carpentry
- Mechanical
- Painting
- Plumbing
- Masonry
- Electrical
- Flooring
- Fencing
- HVAC
- Electronic Safety & Security
- Scaffolding
- Windows
- Doors

www.cce-inc.com



Wally Grobler
Project Manager
wgrobler@cce-inc.com
(206) 547-1035



Vida Vidal
Field Engineer
vvidal@cce-inc.com
(206) 547-1035





Angela Smith, COO
Professional Services Providers



Professional Service Capabilities

Document Control - distribute & track:

RFI's and responses

Submittals and submittal reviews

Coordinate Owner/client input with design team

Schedule analysis and project status reports

Record/distribute notes for team meetings

Maintain project record documents

Ensure compliance with site safety procedures

Provide quality management and document review

Coordinate design team site visits

Diversity Equity & Inclusion Consulting

CAPABILITY STATEMENT

Minority Construction Group LLC (MCG) is a woman and minority-owned general contracting firm based in Portland, Oregon, dedicated to delivering the highest level of professional services to the built environment in the Pacific Northwest. As a vital member of your team, we can provide a broad range of construction consulting and professional services to ensure that you realize your clients' goals for excellence and diversity compliance.

We have extensive expertise providing professional services on large-scale public works contracts. We develop lasting relationships with our clients, design teams and Prime Contractors. We place high value on people and community, foster team leadership skills, and make excellent service and accountability our top priorities.

Certifications

WA Certification MBE, WBE, ESB #M3F0027207

CCB License No 232496

OR COBID MBE, WBE, ESB #12582

Certified OR & WA COBID Firm

COBID CERTIFICATIONS

Certified OR & WA COBID Firm

Woman & Minority Owned

Emerging Small Business
Disadvantaged Business
Enterprise

NAICS CODES

236220

541611

541618





CONSTRUCTION

PCL Construction
Heavy Civil General Contractor
Joshua Hunter
425-457-3436
jjhunter@pcl.com
www.pcl.com

SMALL WORLD ORDER LLC



WHO WE ARE:
SMALL WORLD ORDER LLC

WHAT WE DO:
PRIME CONTRACTING
| ADMINISTRATIVE SERVICES |
CONSULTATION

Contact Us: 206.531.9099
smallworldorderllc@gmail.com

GOODFELLOW BROS.



E S T A B L I S H E D 1 9 2 1

Mike McFarland
Construction Manager

C: 253-929-9050

T: 425-432-2202

E: mikem@goodfellowbros.com

W: www.goodfellowbros.com

FLATIRON

WHO WE ARE

COMPANY STATS

- Founded in 1947
- Heavy Civil Construction
- \$2B+ Annual Revenue
- 3,400+ Employees
- **65+** Active Projects across our Markets

DELIVERY METHODS

- Bid-Build
- GC/CM
- Alliance
- Progressive Design-Build
- Public-Private Partnerships

MARKET SEGMENTS



Airports



Bridges



Dams



Roads



Transit



Underground



Water



1400 Talbot Road South, Suite 500, Renton, Washington
www.flatironcorp.com



J.W. FOWLER

Services:



Alternative Delivery



Deep Water & Sewer Pipelines



Pipeline Repair & Rehab

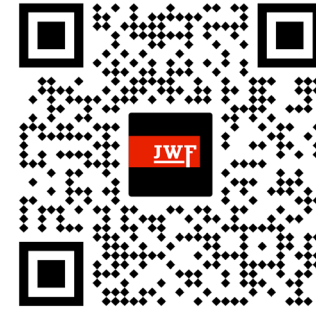


Tunneling & Trenchless



Water & Wastewater

Subcontractor Opportunities



estimating@jwfowler.com



503.623.5373



www.jwfowler.com





Kiewit Outreach Contact

- Dennis Ahl – Contract Administrator / Small & Disadvantaged Business Coordinator



Email: Dennis.Ahl@Kiewit.com

Phone: (253) 943-4070

www.Kiewit.com