

KING COUNTY CONTRACTOR OUTREACH AND NETWORKING EVENT

KING COUNTY - AGENCY PRESENTATIONS ON UPCOMING PROJECTS

APRIL 15, 2024

9:00am – 9:30am	Contractor Table Setup Contractor Check-in
9:30am – 9:40am	King County Opening Remarks
9:40am – 10:00am	Finance and Business Operations Division, Business Development & Contract Compliance (BDCC) – Presentation (Presentation Transition)
10:00am – 11:30am	King County – Agency Presentations of Upcoming Projects
11:30am – 1:00pm	Contractor Networking and Exhibitions King County Exhibitions
12:00pm – 1:00pm	Lunch
1:00pm – 2:00pm	1:1 Contractor Networking Meetings (5-min rotations) •Opportunity for subcontracting firms to meet individually with Prime firms
2:00pm – 3:00pm	1:1 King County Networking Meetings (5-min rotations) •Opportunity for firms to meet individually with King County agencies

King County Agencies

Parks

FMD – Harborview Bond Program

Road Services Division

Metro

Solid Waste Division

Water and Land Resources Division

Wastewater Treatment Division

Procurement and Payables



King County

PARKS

Your Big Backyard

Find our upcoming Capital
Projects here: [Upcoming
Capital Projects - King County,
Washington](#)

**Stop by our table to meet our team
and sign up for a 1:1 meeting**

HARBORVIEW
MEDICAL CENTER



UW Medicine  King County

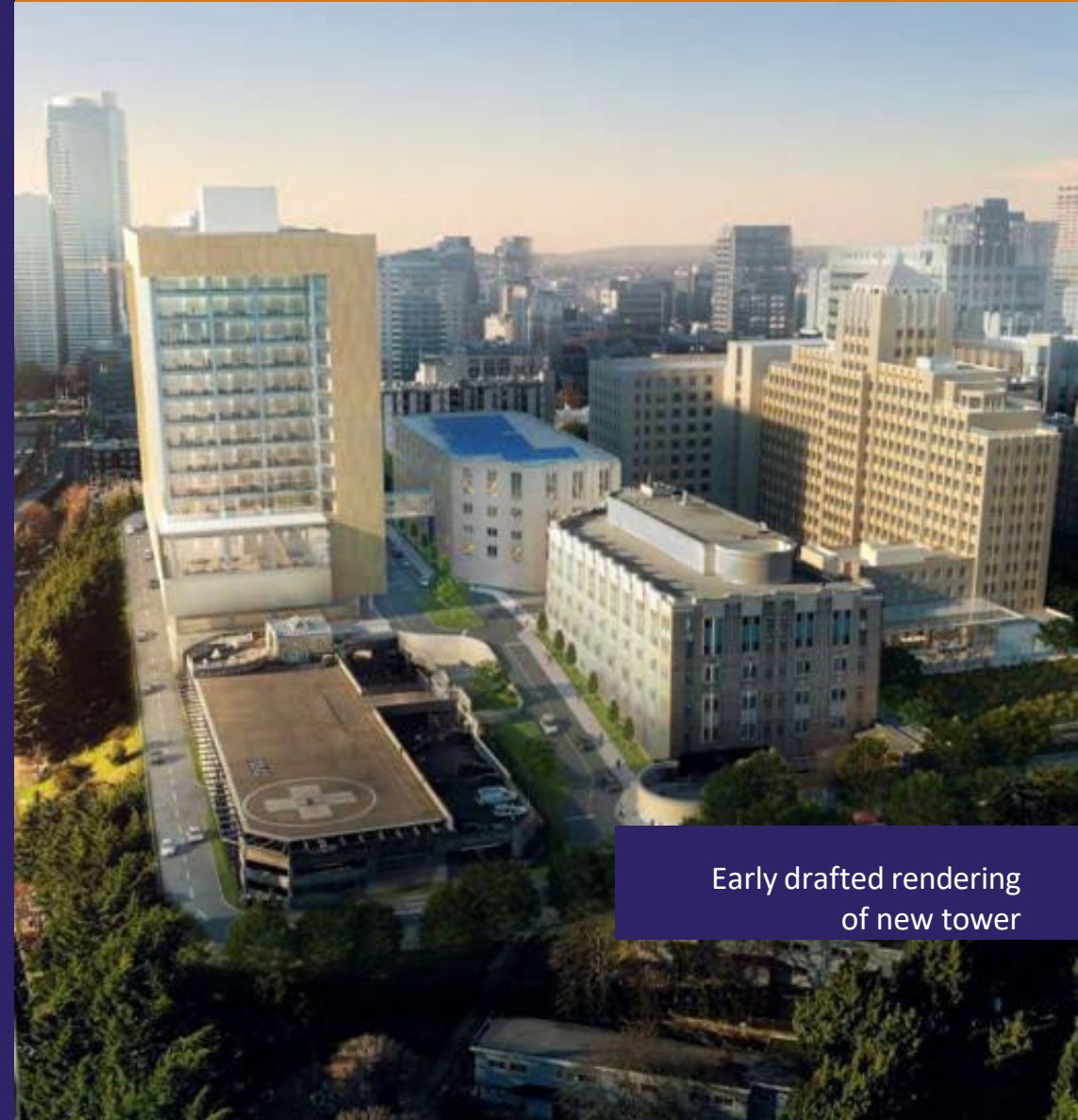
King County

HARBORVIEW BOND PROGRAM*

- RFQ scheduled release: August 2024
- Seeking progressive design-builder

*The Harborview Bond Program is a King County & UW Medicine Collaboration

[KingCounty.gov/Harborview](https://www.kingcounty.gov/Harborview)



Early drafted rendering
of new tower



King County Contractor Networking & Outreach Event

Road Services Division

April 15, 2024

Bridges and Structures

- Bridge preservation and replacement
- Examples: re-decks, load upgrades, painting, scour, maintenance

Fish Passage Restoration

- Replace 46 barriers under road systems
- Preserve road system and improve access to fish habitat

Traffic and Road Design

- Address road safety
- Small to large improvements
- Examples: installing traffic-focused flashers, school route pedestrian facilities, intersection realignment

Upper Tokul Creek Bridge 271B
Prior to Replacement



Upper Tokul Creek Bridge 271B
After Replacement



NE Woodinville Duvall Road At NE 172nd Street
Culvert Replacement / Fish Passage



Renton Ave S Sidewalk, Phase III



Bridge and Structures: Program Objective

- This program is based on systemic and balanced approach to managing bridge preservation and replacement needs.
- Addresses King County's highest priority bridge needs and continued preservation



Bridge and Structures: RFP

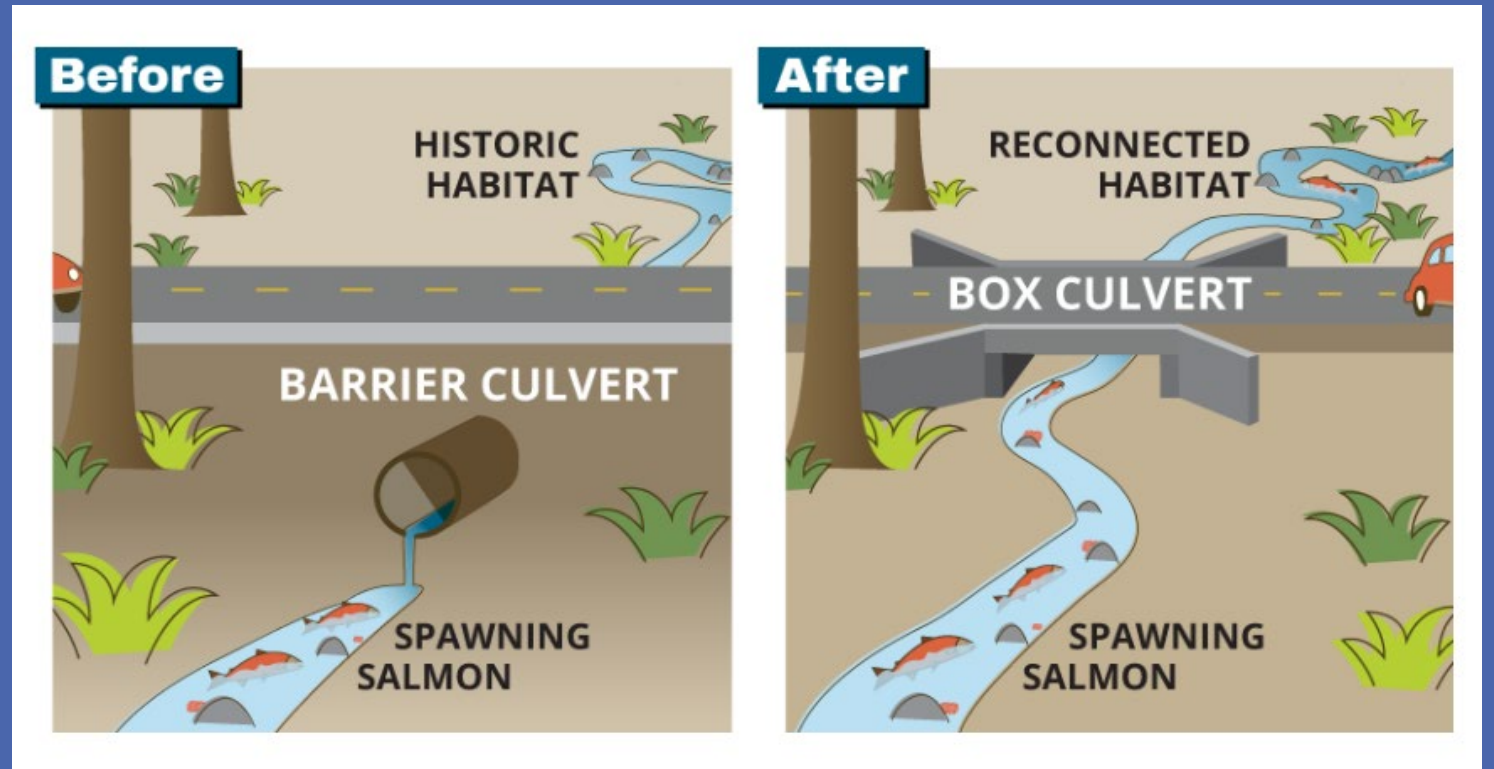
Project Name	RFP
Berrydale Overcrossing Bridge Replacement and Corridor Improvements	June 2024
Tate Creek Bridge Flood Improvements	June 2024
SE Mud Mountain Road Culvert Construction	July 2024

Bridge and Structures: Upcoming Projects

Project Name	Status
Duvall Slough Bridge Re-deck	2024 Construction
Judd Creek Bridge Resurfacing	2025 Construction
Boise X Connection Bridge Replacement	2025 Construction
Fifteen Mile Creek Bridge Replacement	2025 Construction
185th Avenue NE at NE 179th Street Culvert Construction	2026 Construction
Baring Bridge Replacement	2027 Construction

Fish Passage Restoration: Program Objective

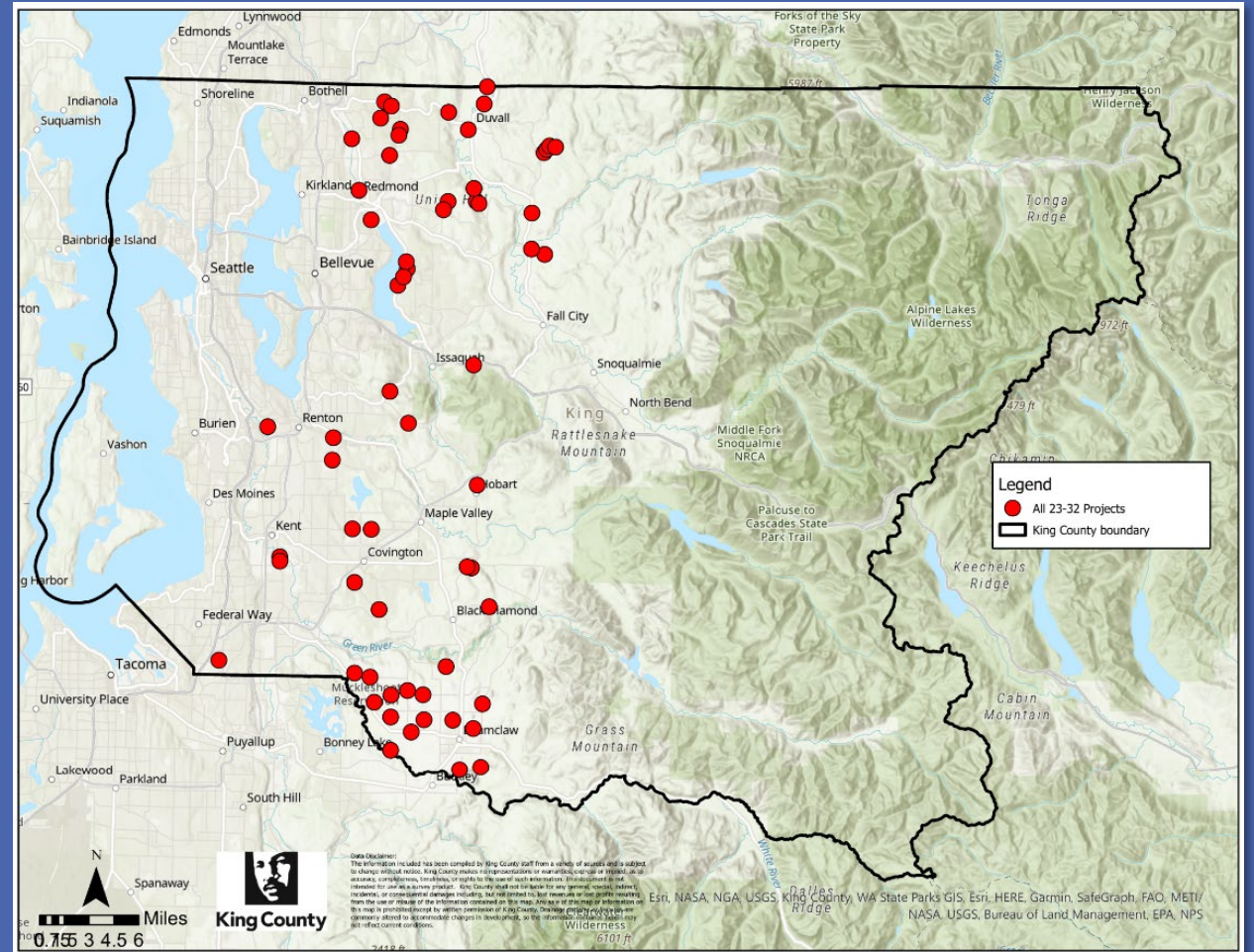
- Preserve the safety and condition of the road system and enhance fish passage by replacing culverts that are in poor or failing condition, or undersized, with new culverts designed to be fish passable.
- Opening the best habitat to the most salmon as quickly as possible.



Fish Passage Restoration: Program Scope

10-year plan

- 62 capital improvement projects
 - 46 barriers managed by Roads
 - 11 barriers managed by Parks
 - 5 barriers managed by WLRD



Fish Passage Restoration: 6-Year CIP Plan

Project Name	Design	Construction
NE 128th Way west of Avondale Road NE	Underway	2025: \$1.2M
Avondale Road NE at NE 144th	Underway	2026: \$1.6M
NE 165th St at 176th NE	Underway	2026: \$1.5M
SE 384th St at 176th Ave SE	Underway	2026: \$1.9M
238th Ave NE at NE 70th St	Underway	2026: \$1.3M
SE 240th St	Underway	2026: \$3.7M
180th Ave SE at SE 408th Street	Underway	2027: \$3.3M
208th Ave at SE 135th	2025: \$800K	2027: \$3.5 M
8402 W Snoqualmie Valley Rd NE	In Negotiation	2028: \$1.4M
Ravensdale Black Diamond Rd at Rock Creek	2024: \$900K	2028: \$5.3M
NE 100th St	2028: \$800K	2031: \$2.1M

Traffic and Road Design: Program Objective

- This program addresses road safety concerns through a variety of small to large improvements.
- Includes installation of traffic-focused flashers, school route pedestrian facilities, intersection realignment and channelization revisions.



Redmond Ridge Roundabout

Traffic and Road Design: RFP

Project Name	Status
Green Valley at 218th Ave S Roundabout	Underway
Issaquah Hobart at May Valley Roundabout	Underway
Woodinville Duvall at W Snoqualmie Valley Intersection	Underway
Traffic Count Consultant	RFP May 2024
332nd Ave SE Corridor Traffic Safety Study	RFP July 2024
King County ITS Strategic Plan Update	RFP July 2024
Miscellaneous Drainage Consultant Projects	RFP TBD

Traffic and Road Design: Upcoming Projects

<u>2024 Projects</u>	<u>2025 Projects</u>
244th Ave NE Slide repair	New Guardrail
ECE ADA Ramps (37 Ramps White Center)	68th Ave S/S124th Pavement Preservation and ADA
Guardrail (Bridge)	Covington Sawyer at 64th Pl S, sight line improvement
Pavement Preservation	White Center Pedestrian Improvements
LED Stop Signs Upgrade	16th Ave SW Pedestrian Improvements and Traffic Calming
	Pavement Preservation
<u>2026 Projects</u>	<u>2027 Projects</u>
57th Ave S Sidewalk	S 360th and 28th Ave S Roundabout
Pavement Preservation	S 360th and Military Rd Roundabout
	Pavement Preservation

More
Information

Roads' Projects and Programs



Roads' Active Capital Projects
2024



Thank you

Janel London, Contracting Manager
janel.london@kingcounty.gov, 206-477-3545

To receive direct links
with more information



Capital Program Overview

King County Metro

ABOUT KING COUNTY METRO

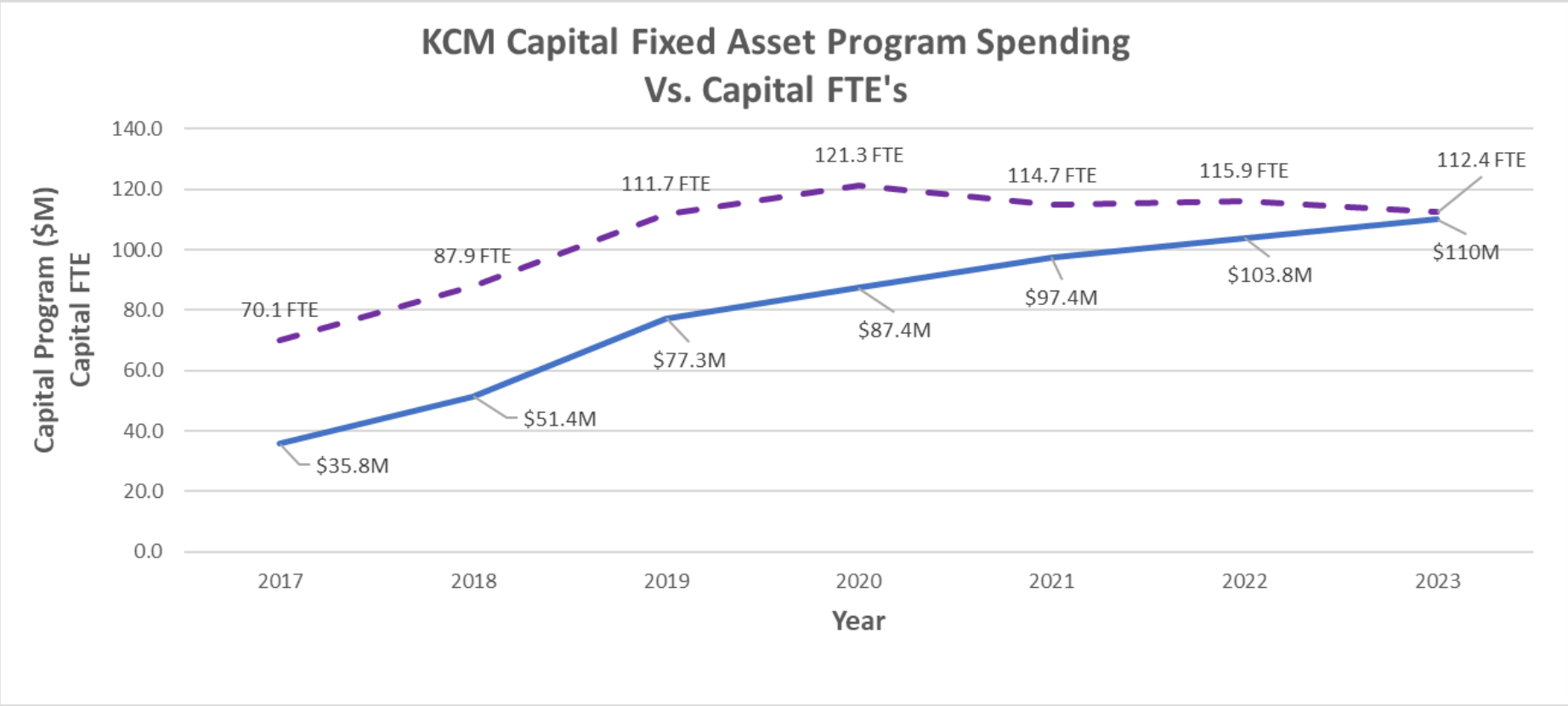


1450 buses, **900** vanpool, **400** cutaways,
3 water taxis, and over **900** non revenue vehicles

Delivering **223k** rides every weekday



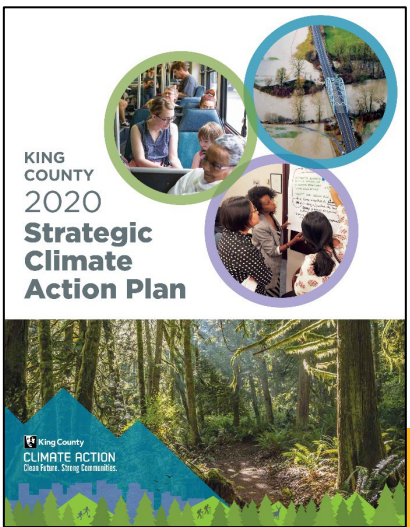
KCM Capital Program



We're Doing More Work With Less Staff – Expanding Our Use Of Contractor and Consultants

Upcoming Opportunities

Metro Policy and Climate Goals



“Partner with communities to prepare for the impacts of climate change and support resilience in disproportionately affected communities.”

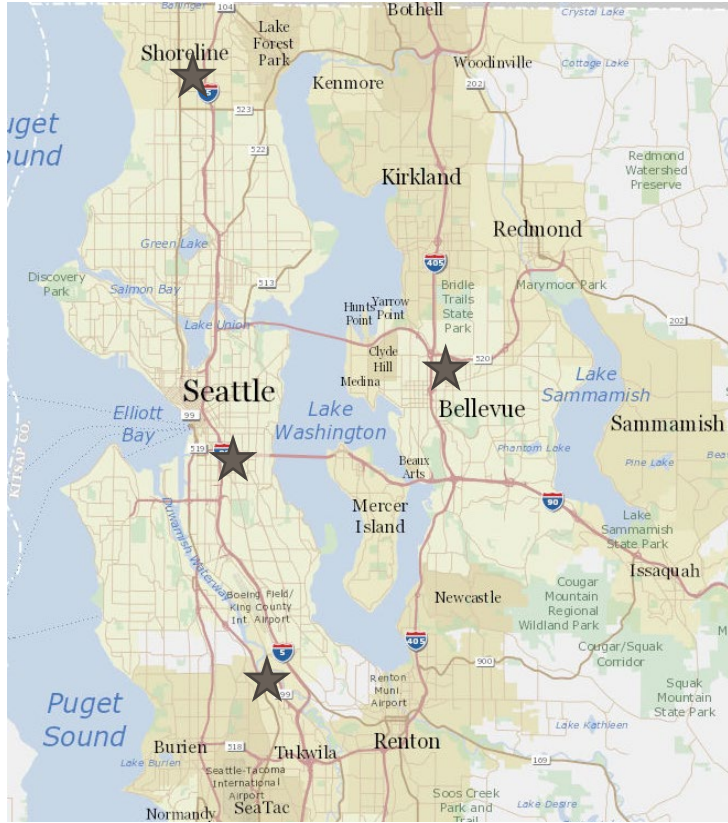
 **70%** REDUCTION IN GREENHOUSE GAS EMISSIONS FROM FLEET BELOW 2017 LEVELS BY 2030

 **100%** ZERO-EMISSION REVENUE BUS FLEET BY 2035

 **100%** LIGHT-DUTY ELECTRIC VEHICLE (EV) BY 2030

 **90%** INCREASE IN UTILIZATION OF TROLLEYS ON WEEKENDS BY 2025

SYSTEMWIDE DEPOT CONVERSION



Task Name	Duration	Start	Finish	Predecessors	2024												2034			
					2024	2025	2026	2027	2028	2029	2030	2031	2032	2033	2034	2035	2036	2037		
▶ South Annex Base	2771 days	Mon 6/4/18	Mon 1/15/29		[Gantt bar spanning from 2018 to 2029]															
▶ Central Campus	2203 days	Tue 1/16/24	Thu 6/24/32		[Gantt bar spanning from 2024 to 2032]															
▶ Planning	120 days	Tue 1/16/24	Mon 7/1/24		[Gantt bar spanning from 2024 to 2024]															
▶ Owner Advisor Procurement	320 days	Tue 4/9/24	Mon 6/30/25		[Gantt bar spanning from 2024 to 2025]															
▶ CPARB Prep & Approvals	75 days	Tue 7/1/25	Mon 10/13/25	33	[Gantt bar spanning from 2025 to 2025]															
▶ Design/Builder Procurement	320 days	Tue 2/4/25	Mon 4/27/26		[Gantt bar spanning from 2025 to 2026]															
▶ Design	540 days	Tue 4/28/26	Mon 5/22/28		[Gantt bar spanning from 2026 to 2028]															
▶ Permitting	538 days	Tue 3/28/28	Thu 4/18/30		[Gantt bar spanning from 2028 to 2030]															
▶ Atlantic Central Implimentation	497 days	Mon 9/11/28	Wed 8/7/30		[Gantt bar spanning from 2028 to 2030]															
▶ Ryerson Base Implimentation	571 days	Thu 4/18/30	Thu 6/24/32		[Gantt bar spanning from 2030 to 2032]															
▶ North Base	1055 days	Fri 12/14/29	Thu 12/29/33		[Gantt bar spanning from 2029 to 2033]															
▶ Planning	80 days	Fri 12/14/29	Thu 4/4/30		[Gantt bar spanning from 2029 to 2029]															
▶ Design Procurement	180 days	Fri 12/14/29	Thu 8/22/30		[Gantt bar spanning from 2029 to 2030]															
▶ Design	320 days	Fri 8/23/30	Thu 11/13/31		[Gantt bar spanning from 2030 to 2031]															
▶ Permitting	120 days	Fri 9/19/31	Thu 3/4/32	87	[Gantt bar spanning from 2031 to 2032]															
▶ Construction Procurement	160 days	Fri 7/25/31	Thu 3/4/32		[Gantt bar spanning from 2031 to 2032]															
▶ Construction	397 days	Thu 3/4/32	Mon 9/12/33		[Gantt bar spanning from 2032 to 2033]															
▶ Close Out	80 days	Fri 9/9/33	Thu 12/29/33	100,103	[Gantt bar spanning from 2033 to 2033]															
▶ South Base	1040 days	Tue 6/24/31	Mon 6/18/35		[Gantt bar spanning from 2031 to 2035]															
▶ Planning	80 days	Tue 6/24/31	Mon 9/13/31		[Gantt bar spanning from 2031 to 2031]															
▶ Design Procurement	180 days	Tue 6/24/31	Mon 3/1/32		[Gantt bar spanning from 2031 to 2032]															
▶ Design	320 days	Tue 3/2/32	Mon 5/23/33		[Gantt bar spanning from 2032 to 2033]															
▶ Permitting	120 days	Tue 3/29/33	Mon 9/12/33	121	[Gantt bar spanning from 2033 to 2033]															
▶ Construction Procurement	160 days	Tue 2/1/33	Mon 9/12/33		[Gantt bar spanning from 2033 to 2033]															
▶ Construction	383 days	Mon 9/12/33	Thu 6/18/35		[Gantt bar spanning from 2033 to 2035]															
▶ Close Out	80 days	Tue 2/27/35	Mon 6/18/35	134,137	[Gantt bar spanning from 2035 to 2035]															
▶ East Campus	1812 days	Fri 1/31/31	Mon 1/11/38		[Gantt bar spanning from 2031 to 2038]															
▶ Planning	80 days	Fri 1/31/31	Thu 5/22/31		[Gantt bar spanning from 2031 to 2031]															
▶ Owner Advisor Procurement	240 days	Fri 4/25/31	Thu 3/25/32		[Gantt bar spanning from 2031 to 2032]															
▶ CPARB Prep & Approvals	120 days	Fri 3/26/32	Thu 9/9/32	152	[Gantt bar spanning from 2032 to 2032]															
▶ Design Builder Procurement	180 days	Fri 5/21/32	Thu 1/27/33		[Gantt bar spanning from 2032 to 2033]															
▶ Design	320 days	Fri 1/28/33	Thu 4/20/34		[Gantt bar spanning from 2033 to 2034]															
▶ Permitting	672 days	Fri 2/24/34	Mon 9/22/36		[Gantt bar spanning from 2034 to 2036]															
▶ East Base Implimentation	480 days	Thu 3/1/35	Thu 1/1/37		[Gantt bar spanning from 2035 to 2037]															
▶ Bellevue Base Implimentation	341 days	Fri 9/19/36	Mon 1/11/38		[Gantt bar spanning from 2036 to 2038]															

DRAFT

CENTRAL CAMPUS ELECTRIFICATION

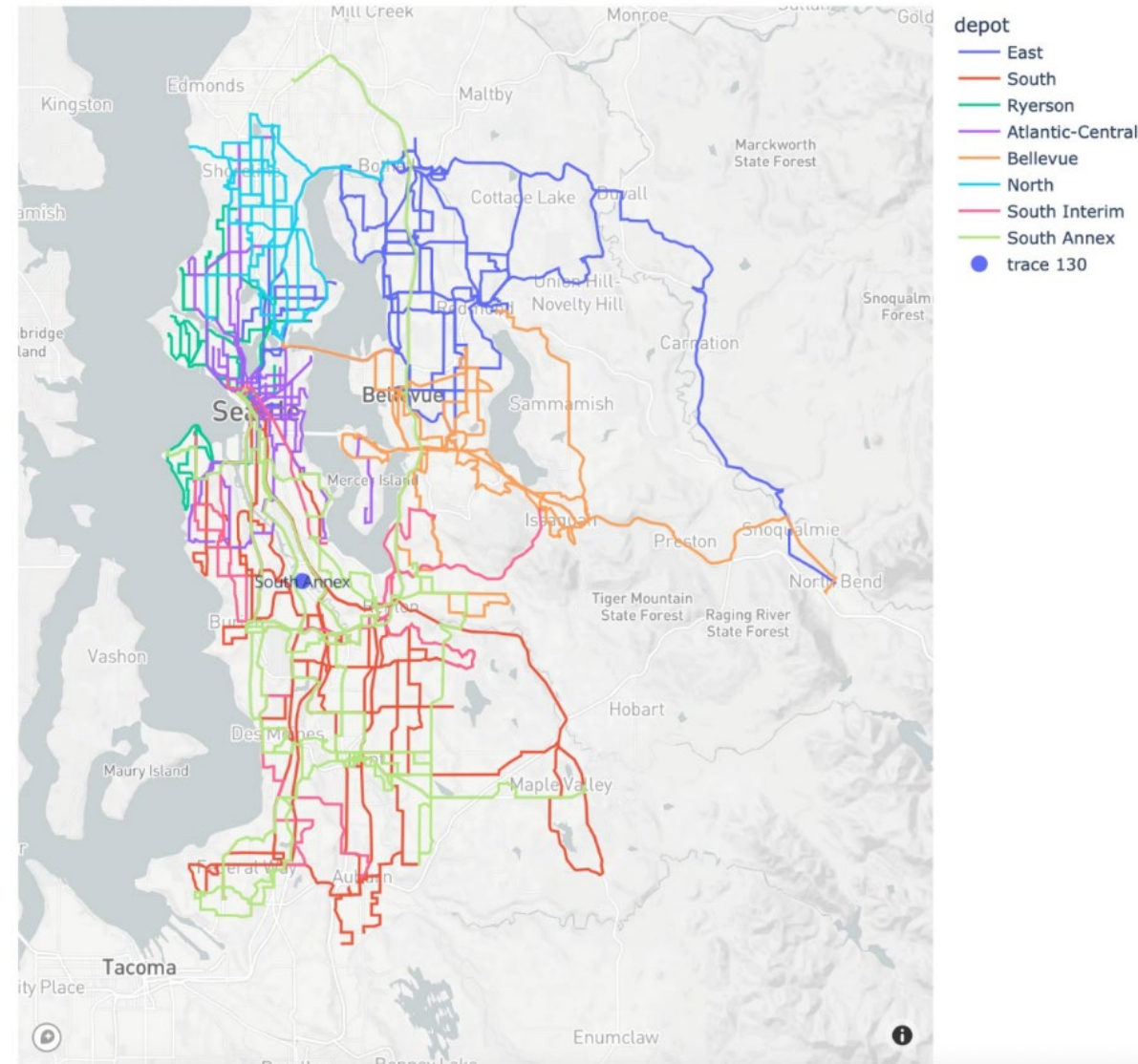


Notable Context:

- Design For 3 Depots & Shared Transformer/Electrical Distribution
- Potential For GCCM or Other Alternative Delivery
- Concurrent Design/Staggered Construction
- Expected RFP mid-2024

Opportunity Charging

- Metro expects to need opportunity charging to support 30% of our routes
- Opportunity charging is likely to be deployed at existing bus layover locations (transit centers/etc)
- Five sites in South King County are under development
 - Burien Transit Center (KCM)
 - Kent/Des Moines Link Station (ST)
 - Kent Transit Center (ST)
 - South Renton Transit Center (ST)
 - Federal Way Transit Center (ST)
- Metro expects to have a complete list of sites to deploy opportunity charging by Q4 2024



Other Fleets

Non-Revenue

Fleet Of ~900 Vehicles At Both Base and Non-Base Facilities

Light Duty: 50% by 2025, 100% by 2030
Medium Duty: 50% by 2028, 100% by 2033
Heavy Duty: 50% by 2038, 100% by 2043

Non-Base Facilities

- Van Distribution Center
- North Facilities Maintenance
- South Facilities Maintenance
- Fleet Engineering
- Safety & Training
- Power Distribution
- Marketing
- Construction Offices



Vanpool & Contracted Services

Vanpool:

- 100% By 2030
- Program In Development
- High potential for P3 supporting in home charging or distributed charging center



Contracted Services:

- 67% By 2030
- Planning RFP Q1 2024
- Substantial programmatic transition from leased to owned sites
- High probability for a programmatic effort to identify, procure, construct, and place site in service

Customer Facility



Public Charging

- 125 Chargers In Park & Rides By 2030
- 150 Chargers In KC Facilities By 2030
- Potential Public/Private Partnership

Marine

- **West Seattle Hub Mobility Hub Enhancements & Potential Relocation**
 - Alternatives Currently Under Study
 - Construction Contract TBD
- **Vessel Electrification Infrastructure**
 - Alternatives Currently Under Study
 - Design Contract TBD
- **Pier 48 Gangway Refurbishment (\$5m)**
 - Design Procurement Mid-2024
- **Existing Vessel Refurbishment Or Hybridization (Late 2020s)**



Facility Improvements

1

Metro's Facility Improvement Program Supports New Construction And Major Improvements To Metro's Facilities...

- Major Remodels/Reconfigurations
- Incorporation Of New Equipment/Process
- New Transit Bases, Maintenance, & Support Facilities

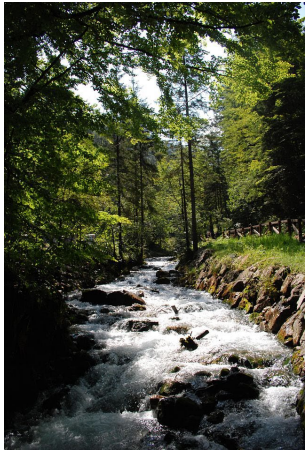


Notable Facility Improvement Projects



Transit Control Center Expansion (\$5m)
Design Procurement Mid 2024

Facility Security Improvements (\$40m)
Design Procurement Mid to Late 2024



Tukwila Stream Daylighting (\$2m)
Construction Procurement Mid 2024

Metro State Of Good Repair Programs

State Of Good Repair Program Supports Replacement of items such as...

- HVAC Systems
- Major & Minor Equipment
- Paving
- Building Envelope
- Infrastructure & Major Utilities, includes Trolley System



Notable SGR Projects



Upcoming A&E Or Alternative Delivery Advertisements

- SGR GCCM & PDB Bundles (>\$50m) – Q3 2024
- Atlantic Base Bus Lift Replacement GCCM (\$12m) – Mid 2024



Upcoming Construction Advertisements

- Atlantic Base Generator Construction (\$1m) – Mid 2024
- East Base Underground Storage Tanks (\$1.5m) – Soon!
- Broad Street Substation Construction (\$6m) – Mid 2024

RAPIDRIDE & Speed and Reliability

- Enhanced Stations
 - Digital Station Signage
 - Shelter Lighting
 - Preboard Fare Collection
- Roadway Improvements
 - Queue Jumps
 - HOV/Bus Only Lanes
 - Signal Priority
- Vehicle Enhancements
 - Real-time Information Signage
 - Onboard Wifi



Notable Rapid Ride Projects

- I Line – Renton/Kent/Auburn (\$60m Project)

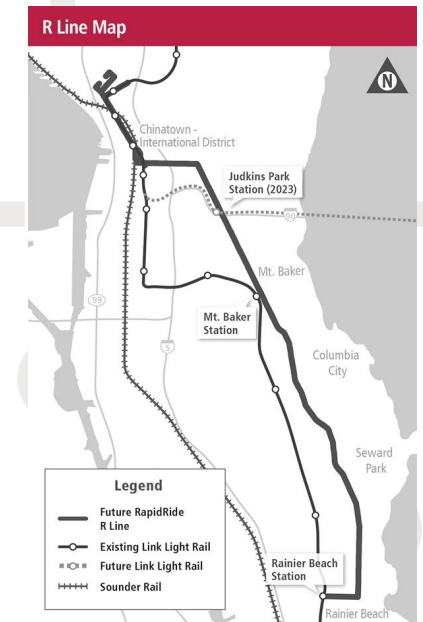
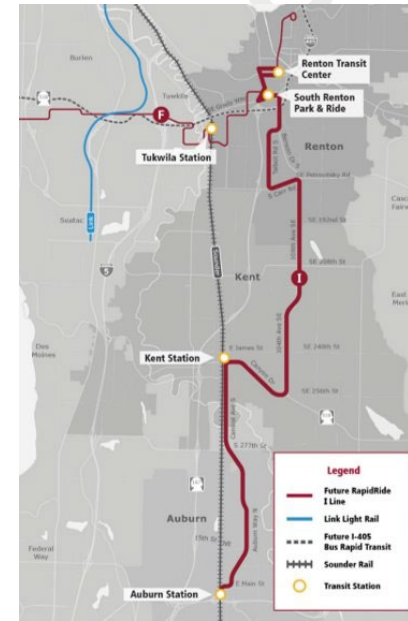
- 17 Mile Bus Rapid Transit Corridor
 - 12 Lane Widening
 - 27 Transit Signal Priority Intersections
 - 82 Stations

Construction Procurement Q2 2024

- R Line – Rainer Valley (\$130m Project)

- ~8 Mile Bus Rapid Transit Corridor
 - Up To 45 Stops/Stations
 - Transit Signal Priority Intersections & BAT Lanes
 - Access Improvements

A&E Procurement Q2 2024



Notable Other Mobility & Trolley Projects



Upcoming A&E

- 12th & Jackson Hub (\$5m Project) - Mid 2024
- S52 Roanoke Lid Trolley Relocation – Mid 2024
- SR520 Montlake Trolley Gap – Mid 2024
- Corridor Improvement Planning Studies – Mid 2024

Getting Engaged?

Find Out More about Upcoming Projects

Upcoming Capital Projects

Plan ahead for these construction, architecture & engineering projects

<input type="checkbox"/>	Project	Value	Est. Ad Date	Type	Agency	Contact Name
62	RapidRide I-Line	\$60,000,000.00	5/1/2023	Construction	Transit	Ronan Bennett
63	Safe Routes to Transit - SW-100	\$1,100,000.00	8/15/2022	Construction	Transit	Ronan Bennett
64	Eastlake Layover Facility	\$10,000,000.00	6/15/2022	Construction	Transit	Ronan Bennett
65	Asphalt Maintenance Work Order Contract	\$1,000,000.00	1/15/2023	Construction	Transit	Ronan Bennett
66	Concrete Maintenance Work Order Contract	\$1,000,000.00	1/15/2023	Construction	Transit	Ronan Bennett
67	Crack and Joint Seal Work Order Contract	\$1,000,000.00	1/15/2023	Construction	Transit	Ronan Bennett
68	Broad Street Substation Equipment Replacement	\$4,700,000.00	8/1/2022	Construction	Transit	Ronan Bennett
69	Interbay Force Main and Odor Control	\$5,700,000.00	1/1/2022	Construction	Wastewater	Richard Huang
70	Lake Hills Interceptor Corrosion Rehabilitation (Construct...	\$25,000,000.00	10/1/2022	Construction	Wastewater	Scott Mingus
71	LOOP Biosolids Compost Pilot at South Plant	\$1,700,000.00	4/1/2022	Construction	Wastewater	Ashley Mihle
72	West Point Warning System Upgrade	\$1,700,000.00	10/1/2022	Construction	Wastewater	Stevn Larry
73	Carkeek CSO Dechlorination System Replacement	\$860,000.00	4/1/2022	Construction	Wastewater	Scott Mingus
114 records		Sum \$720,183,668.00				

<https://kingcounty.gov/depts/finance-business-operations/procurement/for-business/upcoming-contracts.aspx>

Equity & Social Justice In Contracting

Metro seeks consultants and contractors who will help:

Address ESJ determinants, pursue pro-equity practices and integrate community stakeholder collaboration into our projects

Go beyond mitigating harm: identify opportunities to reduce inequities through our investments

Small Contractor and Supplier Certification

Creates opportunities for King County and its contractors to make use of certified Small Contractors and Suppliers (SCS) firms on county contracts:

- Prime Contractors and Subcontractors;
- Consultants; and
- Suppliers

Apply or recertify online:
Kingcounty.diversitycompliance.com

A/E and Small Works Roster (Unadvertised Work)

What are the King County Capital Project Rosters?

- List of prequalified consultants/contractors County can use for smaller contracts
- Simplified, invitational bid process (invitations sent to selected roster members)
- At least one SCS firm must be invited to bid
- Non-SCS firms limited to \$300k annually

How Do I Get On A Roster?

- Separate A/E and Small Works (Construction)
- Submit: Applicable license (e.g., Architecture, Engineering)
- Up to 10 categories of expertise, with 2 examples demonstrating your firm's experience for each category

More Information on KC Procurement Web Page

- <https://www.kingcounty.gov/depts/finance-business-operations/procurement/for-business/roster.aspx>

Questions?

Jen Mayer

Equity and Social Justice Implementation
Program Manager
Metro Capital Division
jmayer@kingcounty.gov
(206) 263-0352



King County

Department of
Natural Resources and Parks
Solid Waste Division

Waste
Prevention

Resource
Recovery

Waste
Disposal



Cedar Hills Landfill

AREA 8 STAGE 1
CLOSURE AND AREA 9
PHASE 1 EXCAVATION
Project

Project Background and Need

Construction contract - Work to be completed for Area 8 Stage 1 Closure includes interim and final cover systems over Refuse Area 8. The closure work will consist of interim cover system on the east slope of Area 8. The south and west slope will receive final cover system. Area: 50 acres

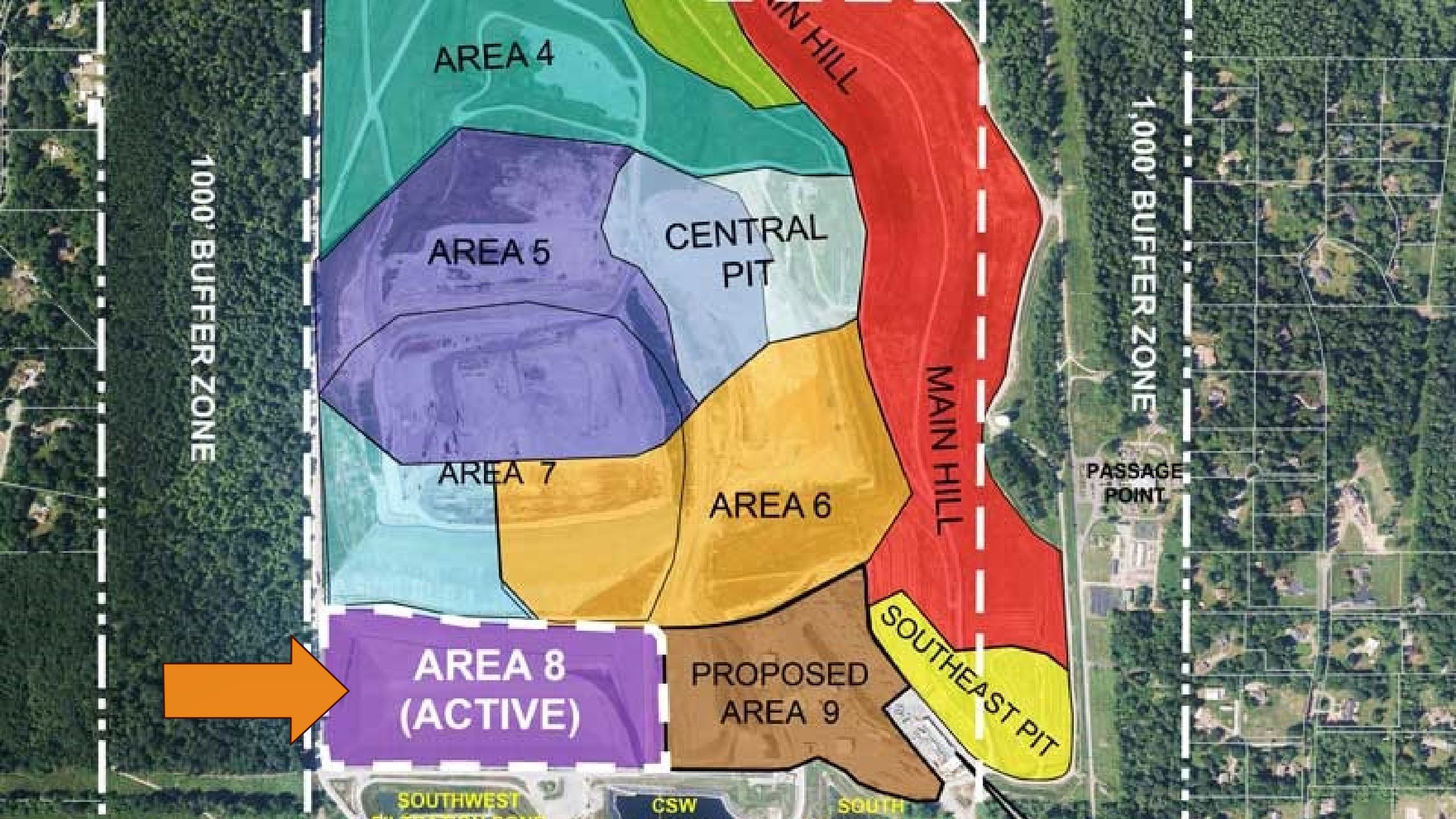
Work to be completed for Area 9 Phase 1 Excavation includes Haul Road 6 and Area 8 Stockpile removal.

Estimate advertisement date is late March 2024 (KC001116) with NTP June 2024.

Potential Subcontractors: Civil, Surveying

Estimated contract cost: \$21,000,000

Milestones	Estimated Schedule
Advertisement	Q1 2024
Contract NTP	Q2 2024
Substantial Completion	Q2 2025



AREA 4

AREA 5

CENTRAL
PIT

AREA 7

AREA 6

AREA 8
(ACTIVE)

PROPOSED
AREA 9

SOUTHEAST
PIT

MAIN HILL

MAIN HILL

PASSAGE
POINT

1,000' BUFFER ZONE

1,000' BUFFER ZONE

SOUTHWEST

CSW

SOUTH



Cedar Hills Landfill

47

4 Interior Header Project

Project Background and Need

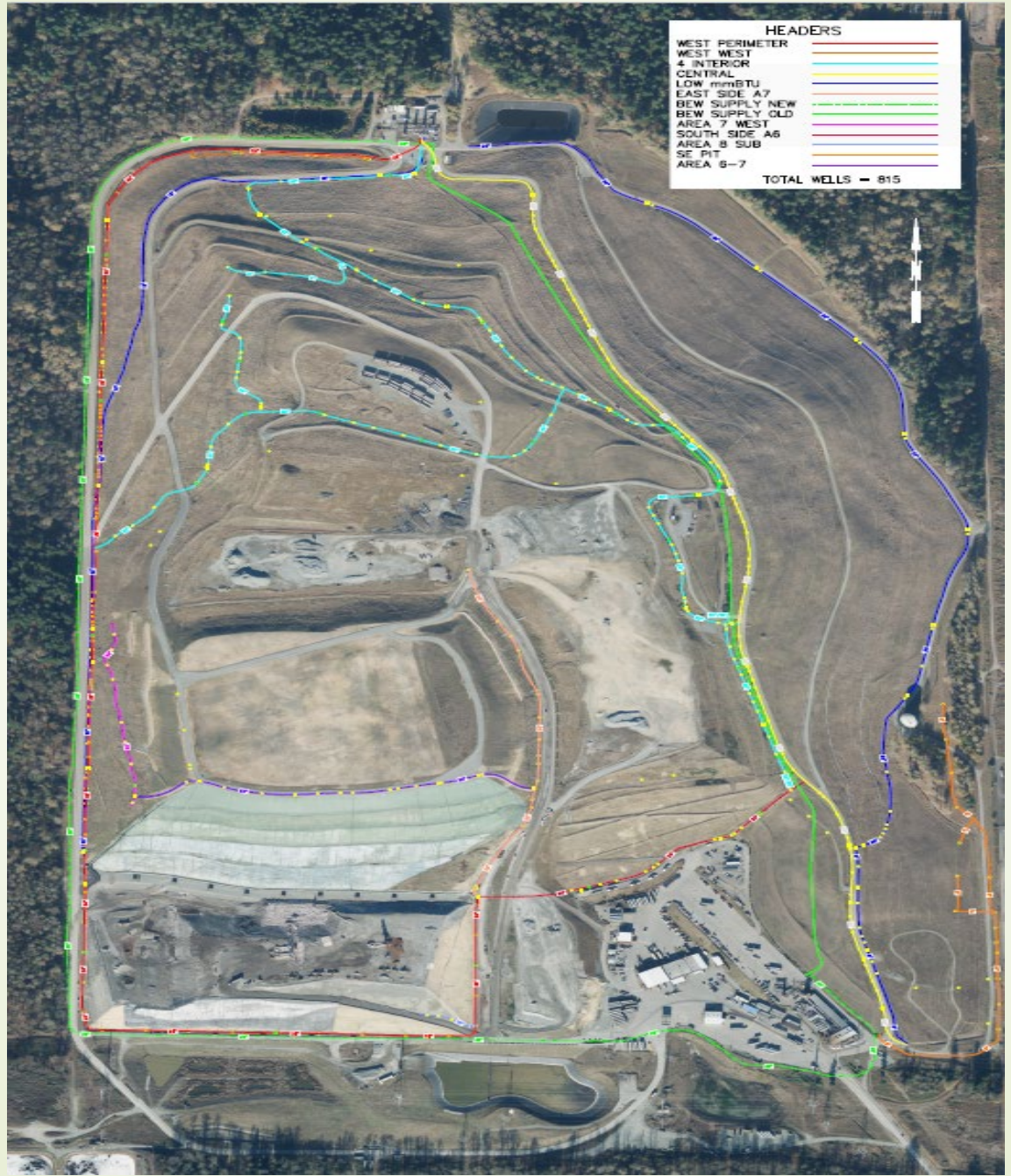
Background: Frequent failures are occurring on the 4 Interior Header at CHRLF, leading to atmospheric intrusion into the landfill gas collection and conveyance system (GCCS). The primary objective of this project is to replace the 4 Interior Header (approximately 9,200 LF) that experiences frequent failures. Additional objectives include assessing the remainder of the headers (West Perimeter & Central) to determine if sections of those headers require replacement. The design of the replacement header system will result in increased vacuum to the southern portion of the landfill. This project will improve the landfill gas collection system by replacing an aging asset.

Potential Subcontractors: Civil, Geotechnical, Environmental, Surveying

Milestones	Estimated Schedule
Advertisement	Q2 2025
Contract NTP	Q3 2025
Substantial Completion	Q1 2026

Estimated Contract Cost:
\$3,400,000.00





51

Bow Lake Hillside Stabilization Project

Project Background and Need

Background: Erosion on the hillside southeast of the Bow Lake Recycling and Transfer Station (BLTS) has left a sinkhole void approximately 20' wide with near-vertical sidewalls, 12' feet deep and extending approximately 40' down the slope. Due to the irregular shape of the scarp, the volume is estimated. This slide has exposed and applied pressure to an 18" HDPE stormwater pipe that runs down the hillside, potentially destabilizing the hillside soils and displacing the stormwater conveyance. An estimated 175 cubic yards of soils have been eroded. The objective of this project is to repair the eroded area and to reroute the storm drainage pipe away from the portion of slope that initial geotechnical investigation has indicated as showing evidence of a landslide.

Potential Subcontractors: Civil, Geotechnical, Environmental, Landscape Architect, Surveying

Milestones	Estimated Schedule
Advertisement	Q2 2026
Contract NTP	Q3 2026
Substantial Completion	Q3 2026

**Estimated Contract Cost:
\$809,781.00**



King County

Department of
Natural Resources and Parks
Solid Waste Division

Waste
Prevention

Resource
Recovery

Waste
Disposal

Harbor Island

Roof

54

Replacement

Project

HI Roof Replacement Schedule and Budget

The project's objective is to replace the roof of Warehouse "E" at Harbor Island, with an estimated cost of \$2.3 million. This entails removing the current roof and installing a new Thermoplastic Polyolefin (TPO) membrane covering 90,000 square feet. The new roof will incorporate existing penetrations to ensure structural integrity and waterproofing.

Additionally, the project aims to achieve the federal Small Business Enterprise (SBE) goal of 15% countywide and includes a community workforce agreement.

Milestones	Estimated Schedule
Advertisement	Jun 27, 2024
Contract NTP	Oct 9, 2024
Substantial Completion	Nov 22, 2024

Shoreline
Recycling and
Transfer Station
Dust Control
Project

Shoreline TR Station Dust Control Project Schedule and Budget

The project, with a budget of \$1.93 million and slated for advertisement in December 2024, encompasses electrical, mechanical, and architectural assignments. It entails installing a new Mezzanine Wall, re-ducting existing Dust Control fan equipment, upgrading the deteriorated misting system, and incorporating a bird screen into the ceiling of the Shoreline Recycling and Transfer Station. Aiming to fulfill the federal Small Business Enterprise (SBE) objective of 15% countywide, the project also features a community workforce agreement.

Milestones	Estimated Schedule
Advertisement	1st Q, 2025
Contract NTP	3rd Q, 2025
Substantial Completion	4th Q, 2025

Cedar Hills Landfill

58

Area 9 New Area Development

Project Background and Need

Background: KCSWD evaluated waste disposal options in the 2019 Solid Waste Comprehensive Plan and recommended further development of the Cedar Hills Regional Landfill (CHRLF), including Area 9 cell in the southeast corner of the CHRLF site. The Area 9 footprint encompasses several operations facilities and existing facilities that will need to be demolished or relocated before Area 9 construction begins.

Construction is planned & contracted in multiple stages

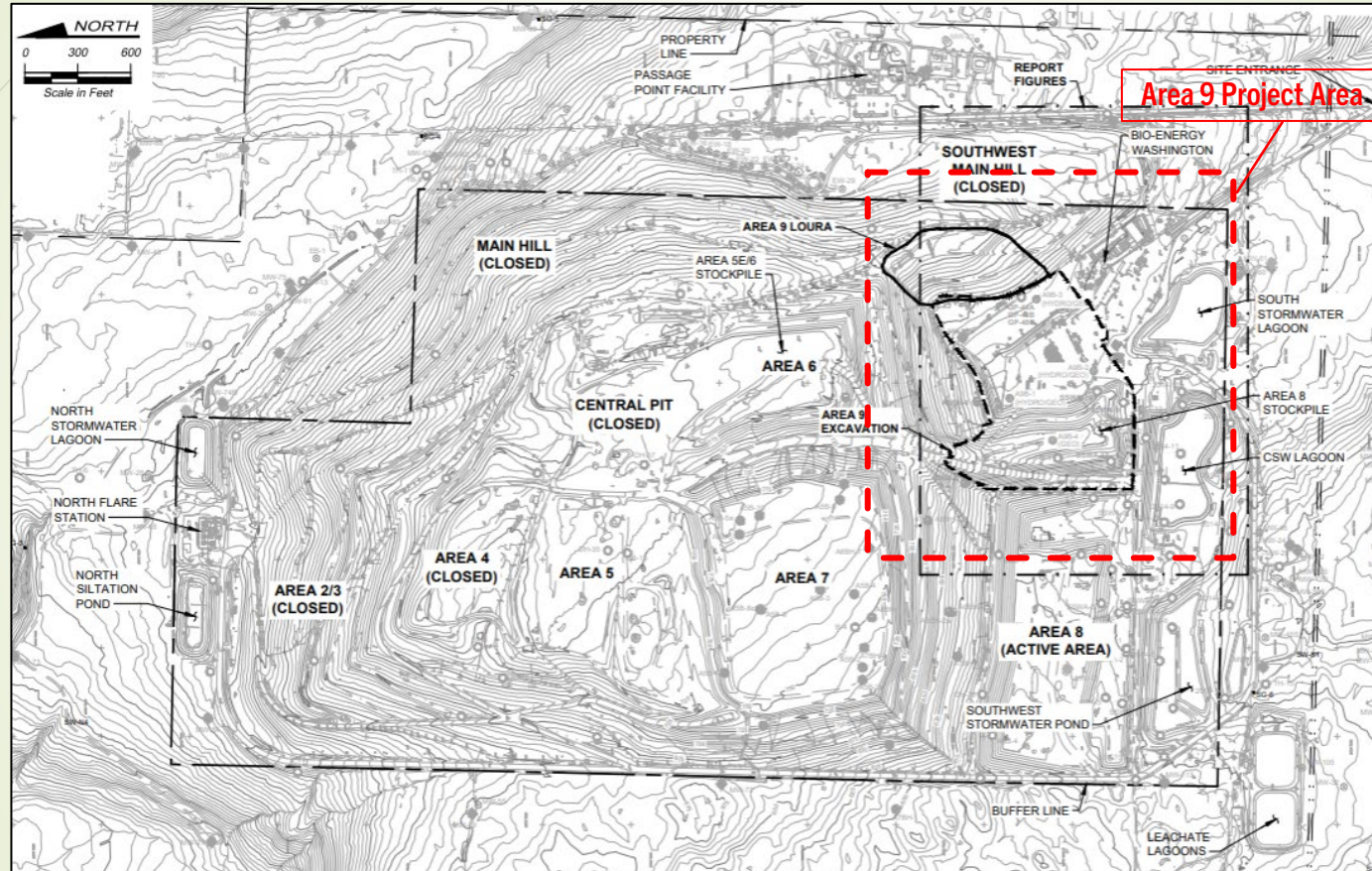
- Phase 1: Stockpile Removal
- Phase 2: Existing Facility Demo; Mass Excavation and Export
- Phase 3: Final Excavation; Liner Installation; Landfill Gas, Leachate, and Stormwater Infrastructure

Milestones	*Phase 1	Phase 2	Phase 3
Advertisement	1Q 2024	4Q 2024	3Q 2026
Contract NTP	3Q 2024	2Q 2025	1Q 2027
Substantial Completion	2Q 2025	4Q 2026	4Q 2028

*Phase 1 contracted w/
Area 8 Closure Project

Estimated Construction Cost	\$8M	\$45M	\$20M
-----------------------------	------	-------	-------

CHRLF Area 9 Site Plan



Cedar Hill Region Landfill Site Plan

Impoundments and 61 Conveyance Systems Compliance

Project Background and Need

Background:

The Impoundments and Conveyance Systems Compliance Project provides a regulatory required assessment of, and improvements to, existing leachate impoundment and conveyance systems at the Cedar Hills Regional Landfill, Vashon Landfill, and select Solid Waste Division (SWD) recycling and transfer stations (RTS).

New WAC (Washington Administrative Code) 173-350-330 requires leak or tightness testing on select leachate impoundments, tanks, and conveyance piping.

Potential Subcontractors: Civil, Geotechnical, Environmental, Surveying

Milestones	Estimated Schedule
Advertisement	Q2 2024
Contract NTP	Q4 2024
Substantial Completion	Q4 2025

Estimated Contract Cost:

A&E WO— 4,000,000 – advertised SOW
Construction WO— 1,000,000 – advertised SOW

Black River Pump Station (BRPS) Upcoming Contract Opportunities

April 15, 2024

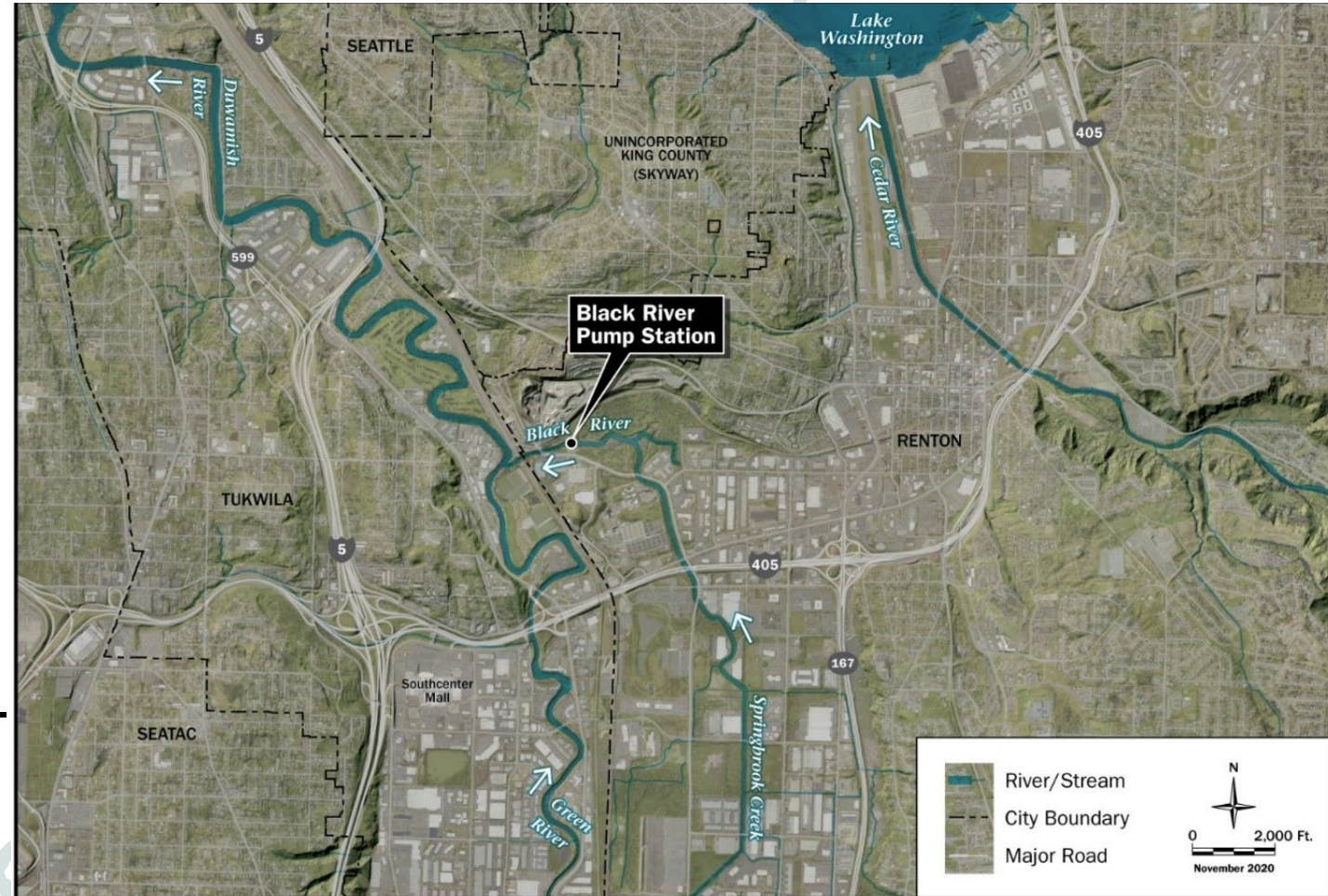
Tom Bean, Engineering Special Projects Lead

Department of Natural Resources and Parks
Water and Land Resources Division
River and Floodplain Management Section
Service Provider to the King County Flood Control District



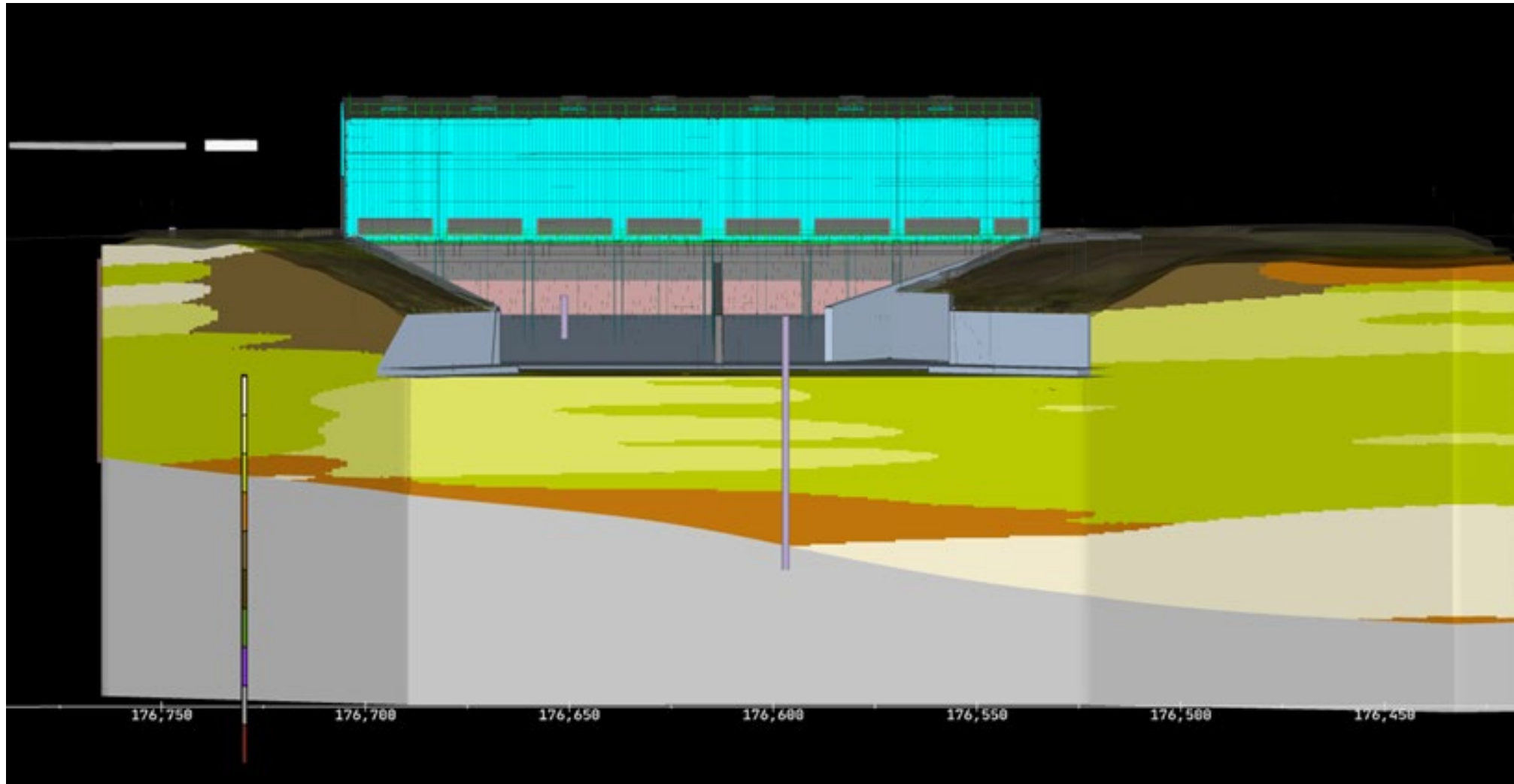
BRPS Facility and Purpose

- Critical facility that controls flood inundation upstream in Renton
 - Dam prevents tidal backflows in Renton
 - Pump house is vital outlet in case of upstream levee breach or overflow
- Does provide fish passage in both directions, but not for all life stages
- >50 years old (1970 construction)
- Flood Control District adopted a multi-benefit policy in 2020



The use of the information in this map is subject to the terms and conditions found at: www.kingcounty.gov/services/gis/Maps/terms-of-use.aspx. Your access and use is conditioned on your acceptance of these terms and conditions.
Data: King County Datasets, 2019 aerial image; KGIT DCE: 2011_10293w_black_river_PS_notogis.ai

Liquefiable Soils Beneath Shallow Spread Footings



3D subsurface model view from west (downstream)

WLFL8 BRPS Fish Passage Improvements

- Open Bypass Channel
- Fish Spill Gate
- Vertical Travelling Screens
- Alaska Steeppass Extension
- Alaska Steeppass Improvements



Upcoming Contracts (number 1 of 2)

Construction Management and Inspection for integrated construction of:

WLFL8 BRPS Fish Passage Improvements:

WLFL8 BRPS Seismic Upgrades

WLFL8 BRPS Control Building Replacement

WLFL8 BRPS Support Systems Upgrade

- RFP in 2nd Quarter of 2024
- \$4 million estimate of consulting cost
- Constructability review of design materials
- Four-year construction sequence, assuming extended in-water work windows
- Work in cooperation with WTD CM&I

Upcoming Contracts (number 2 of 2)

Construction of same integrated works

- Invitation to Bid in 3rd Quarter of 2025
- \$85 million engineer's estimate of construction cost
- Four-year construction sequence, assuming extended in-water work windows
- Ground improvements beneath existing facilities (dam and walls)
- Fish bypass channel with roller gate closure
- Alaska steppass fish ladder extension and improvement
- Vertical traveling screen system for fish exclusion
- Replace control building
- Complex sequence of cofferdams, dewatering, and fish rescue



Be prepared!
Visit kingcounty.gov/PrepareForFlooding



Upcoming Capital Projects

WLRD Engagement Hub - kingcounty.gov/WLR

- Learn about 11 more capital projects and their associated contracts with Water and Land Resources, including PM contact information
- Visit WLRD's table following the presentations for more information and other upcoming contract opportunities

Questions: Tammy Merritt, Contracts Supervisor, tammy.merritt@kingcounty.gov

King County Wastewater Treatment Division Upcoming Contracting Opportunities

King County Contractor Outreach and Networking Event
April 15, 2024



King County

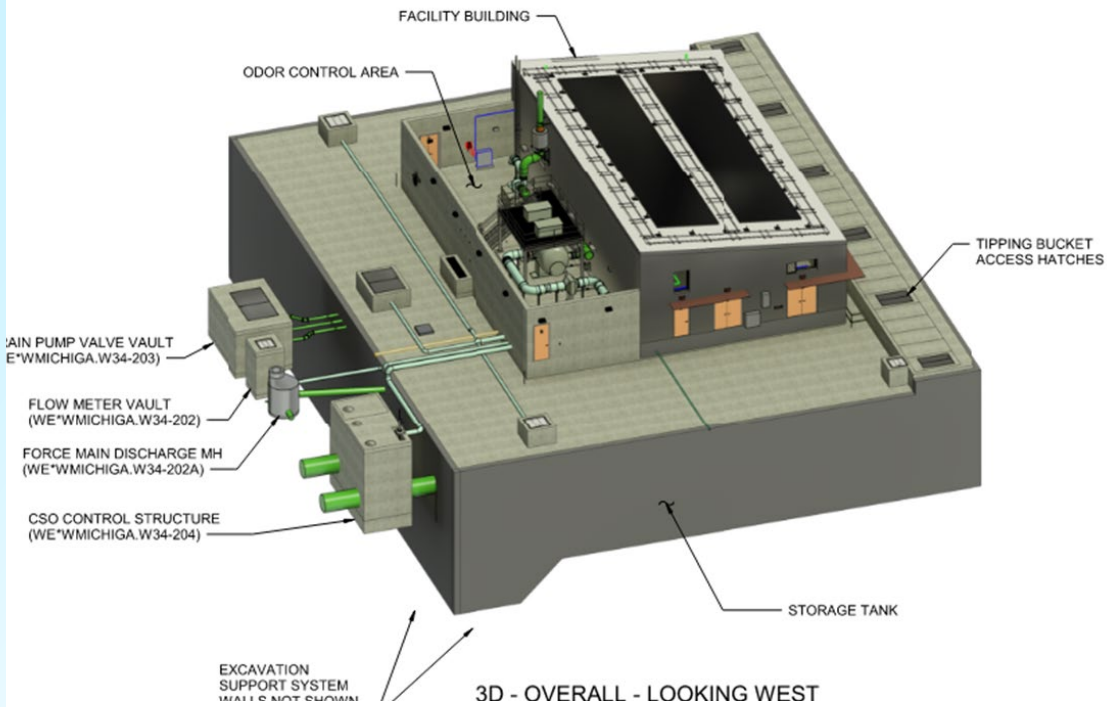
Department of
Natural Resources and Parks
**Wastewater Treatment
Division**



WTD Capital Delivery

FACILITY PROGRAMS

West Duwamish Wet Weather Storage



Project Background and Need

- Buried storage tank (1.25 million gallons of storage) with deep soil mixing underneath; 35' deep excavation
- Above-grade facility building and outdoor odor control area
- Buried diversion structure
- Improvements to existing systems at W Michigan St Regulator Station, including new standby generator



Project Schedule and Budget

Milestones	Estimated Schedule
Advertisement	Q1 2025
Contract NTP	Q3 2025
Substantial Completion	Q1 2028

**Estimated
Contract Cost:
\$50M**



WTD Capital Delivery

FACILITY PROGRAMS

Agenda

- Staying Connected with WTD - Schedule
- Highlighted Projects
 - Coal Creek Siphon and Trunk Parallel
 - West Duwamish Wet Weather Storage
 - Black Diamond Trunk Capacity Upgrade (GC/CM)
 - South Interceptor Rehabilitation (PDB)
 - Sammamish Plateau Diversion (GC/CM)

Staying Connected with WTD

WTD's capital program is growing and will double in size within the next three years. This will continue to create ongoing contracting opportunities of all types. As such, WTD will be holding quarterly outreach events with the consulting and construction community.

Virtual Open Houses

Next Open House:
Q3 2024

WTD hosts meetings quarterly to discuss upcoming opportunities and highlight projects and contracts expected to advertise in the next 6 to 12 months.

In-Person Networking Events

Opportunity to connect
(SCS/MBE/WBE)

Subcontractors with Primes.
Contractors and Consultants interested in Prime contracting opportunities with WTD are expected to participate in these events.

1:1 Project Team Meetings

Next dates available:
May 14-28

Registration link will soon be available on WTD's Upcoming Contract Opportunities page



Coal Creek Siphon and Trunk Parallel

Project Background and Need

- The Coal Creek Trunk Upgrade, located in the City of Bellevue, will upgrade its existing sewer pipe to meet WTD 2060 20-year peak flow criteria.
- Includes numerous constraints, including restricted tree felling periods for the Migratory Bird Treaty Act.
- Work occurs in the Coal Creek Natural Area, with several locations in environmentally sensitive areas, including salmon bearing creek.
- Project is near Coal Creek Parkway SE, a major arterial, with high traffic volume, including sections of pipe installation in the ROW.
- A portion of the nature trail bordering the creek will be made accessible to people with disabilities.



WTD Capital Delivery

FACILITY PROGRAMS

Project Scope

- Pipe
 - Trenchless: Direct Steerable Pipe Thrusting: 5,219 ft
 - Microtunnel: 789 ft
 - Pipe Lining: 823 ft
 - Open cut: 3,726 ft
- Lateral connections
- Stream bank restoration
- Construction of an access road with a retaining wall
- Decommissioning of existing sewer pipe and maintenance holes
- Environmental mitigation and wetland restoration

Milestone	Estimated Schedule
Bid Advertisement	Q2 2024
Contract NTP	Q4 2024
Substantial Completion	Q1 2030

Contract is currently being prepared for advertisement and under the "Cone of Silence"

Black Diamond Trunk Capacity Upgrade (GC/CM)

Project Background and Scope

- Located in the City of Black Diamond on 228th Ave SE and Lake Sawyer Road SE
- Project is currently in design and evaluating alternatives for the upgrade approx. 6 miles of conveyance pipe.
- The existing pipe lengths to be replaced are as follows:
 - 10-inch pipe = 627 LF
 - 12-inch pipe = 7,309 LF
 - 15-inch pipe = 18,557 LF
 - MH 1 through MH 97 = 48-inch-diameter structures
- Both opencut and trenchless construction techniques are assumed
- Project will likely require early work packages through GC/CM Delivery

Project Schedule and Budget

Milestone	Estimated Schedule
Anticipated PRC Approval	Q3 2024
GC/CM Advertisement	Q1 2025
GC/CM NTP	Q2 2025

**Estimated
Contract Cost:
\$75M**



WTD Capital Delivery

FACILITY PROGRAMS

South Interceptor Rehabilitation (PDB)

Project Background and Need

- Inspection of the South Interceptor, conveying flows directly to South Treatment Plant (STP), showed significant levels of concrete degradation and corrosion due to hydrogen sulfide.
- A 90-inch segment conveys flows to the Eastside Interceptor, located inside STP, and further upstream joins parallel 72-inch and 108-inch interceptors.
- Conveys approx. 32MGD to STP.
- Rehabilitation required to prevent pipe failure.
- Area is zoned commercial, crossing under I-405 and an adjacent major arterial (Grady Way).
- Environmentally sensitive areas nearby.



WTD Capital Delivery

FACILITY PROGRAMS

Project Scope

Includes the rehabilitation of 1,623 linear feet of the South Interceptor and associated structures, located in the City of Renton:

- Rehabilitation of 445 linear feet (LF) of 72-inch and 1,185 LF of 90-inch diameter reinforced concrete pipe.
- Rehabilitation of up to (7) maintenance holes.
- Modifications to junction structure at South Interceptor and Eastside Interceptor (located at South Treatment Plant), which may be necessary to isolate flows during rehabilitation.
- Design, installation and operation of sewer diversion pumping system (including all traffic control and restoration activities).

Milestone	Estimated Schedule
Anticipated PRC Approval	Q3 2024
Advertisement	Q4 2024
NTP	Q2 2025

**Estimated Contract Cost:
\$36M**

Sammamish Plateau Diversion (GC/CM)

Project Background and Need



The Sammamish Plateau Diversion project will address regional conveyance system capacity needs by diverting flows out of the South Lake Sammamish Planning Area north. Diverting flows northward will alleviate capacity needs at several King County conveyance facilities.



WTD Capital Delivery

FACILITY PROGRAMS

Project Scope

- This project will design and build a conveyance line capable of diverting up to 9.14 mgd of flow from the Southwest Lake Sammamish area north.
- The project is in Predesign and six preliminary alternatives have been identified to divert flows to King County's Northeast Lake Sammamish Interceptor. The six preliminary alternatives vary based on:
 - Pipeline corridor
 - Hydraulic condition (gravity, tightline, Intermediate pump station and force main)

Milestone	Estimated Schedule
Anticipated PRC Approval	Q3 2024
Advertisement	Q4 2024
NTP	Q2 2025

**Estimated Contract Cost:
\$52.4M**



WTD Capital Delivery

FACILITY PROGRAMS

WTD Staff Contact Info:

Coal Creek Siphon and Trunk Parallel
South Interceptor
Black Diamond Trunk Capacity Upgrade
West Duwamish Wet Weather Storage
Sammamish Plateau Diversion

Scott Mingus – scott.mingus@kingcounty.gov
Scott Mingus – scott.mingus@kingcounty.gov
Ann Fowler – afowler@kingcounty.gov
Maud de Bel – mdebel@kingcounty.gov
Meredith Redmon – meredith.redmon@kingcounty.gov

For all other project inquiries:

Jeni Bonenfant
WTD Project Control Supervisor
Email: Jeni.Bonenfant@kingcounty.gov

Website: [WTD Upcoming Contract Opportunities](#)



Do Business With King County

E-Procurement Supplier Portal Registration

Register as a Supplier

Register today to start responding to King County solicitations.

- Registration is required.
- User guides & video tutorials available.
- Contacts us with your questions.



Attend an Orientation

Register to a free online session to learn how to do business with King County.

- April 18th: Goods, Services & Technology
- May 16th: Architecture, Engineering & Professional Services
- June 20st: Construction

A screenshot of the King County E-Procurement Supplier Portal registration page. The page has a blue header with the King County logo and a navigation bar with seven steps: 1. Company Details (highlighted), 2. Contacts, 3. Addresses, 4. Business Classifications, 5. NAICS Codes, 6. Rosters and Certifications, and 7. Review. The main content area is titled "Register Supplier: Company Details" and includes a red instruction: "Please complete all required fields. Select 'Next' or 'Save for Later' after entering your contact information." Below this are several input fields: "Supplier/Company Name", "Tax Organization Type" (dropdown), "Supplier Type" (dropdown), "Corporate Web Site", "Tax Country" (dropdown), and "Taxpayer ID". A yellow banner highlights a requirement: "* Required: attach a completed IRS W-9 form None +". Below this is a section for "Your Contact Information" with fields for "First Name", "Last Name", "Email", and "Confirm Email".

Procurement & Payables

☎ (206) 263-9400

✉ procurement.web@kingcounty.gov

Upcoming Capital Projects

Start planning ahead...

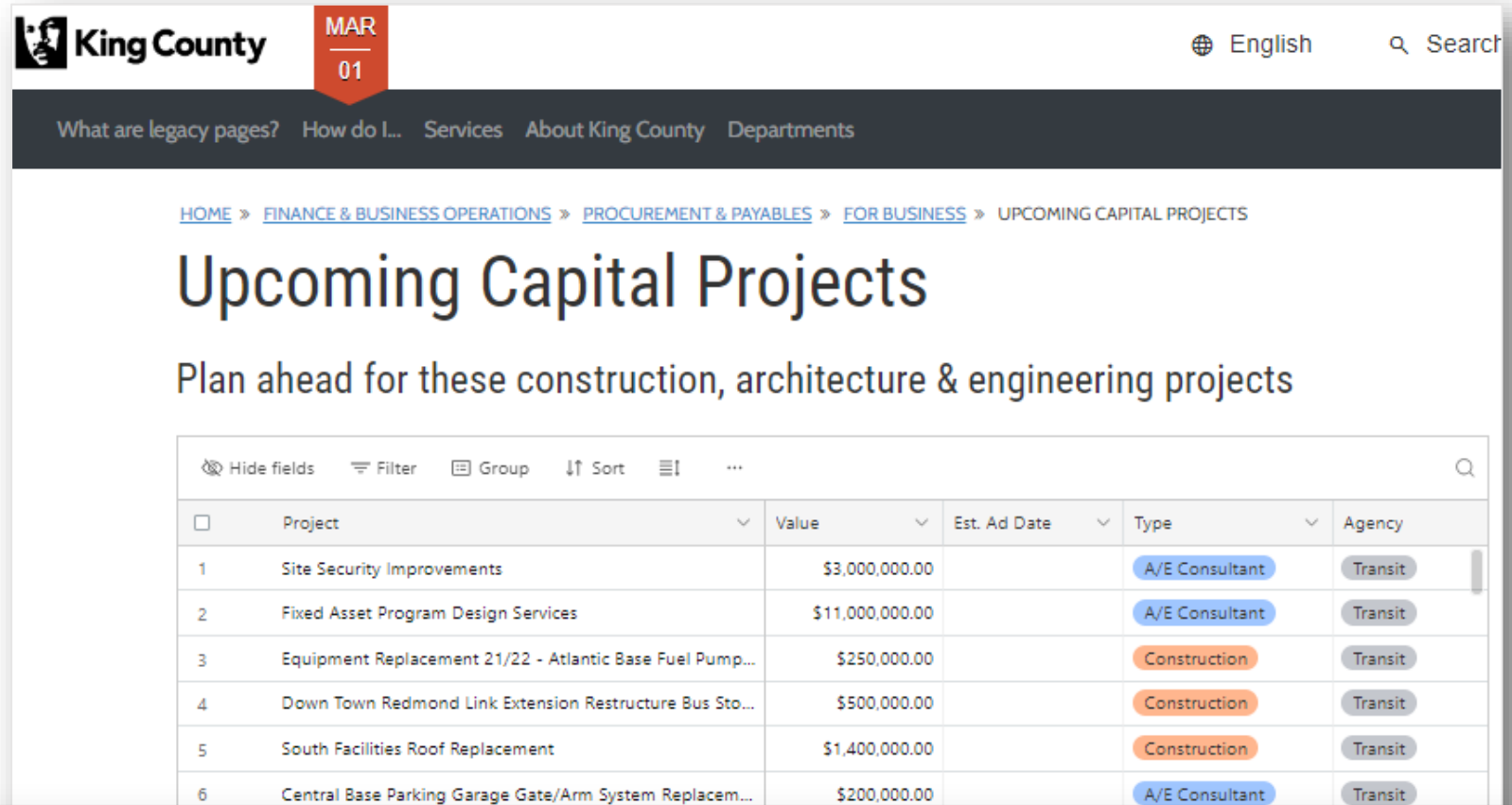
- Contact the King County project manager.
- Get pre-planning details.
- Start forming project teams.



Procurement & Payables

 (206) 263-9400

 procurement.web@kingcounty.gov



The screenshot shows the King County website's "Upcoming Capital Projects" page. The page header includes the King County logo, a date indicator for "MAR 01", and a search bar. Below the header is a navigation menu with links for "What are legacy pages?", "How do I...", "Services", "About King County", and "Departments". The main content area features a breadcrumb trail: "HOME > FINANCE & BUSINESS OPERATIONS > PROCUREMENT & PAYABLES > FOR BUSINESS > UPCOMING CAPITAL PROJECTS". The title "Upcoming Capital Projects" is prominently displayed, followed by the subtitle "Plan ahead for these construction, architecture & engineering projects". Below this is a table with columns for "Project", "Value", "Est. Ad Date", "Type", and "Agency". The table lists six projects, with their values and types (A/E Consultant or Construction) and agencies (Transit).

	Project	Value	Est. Ad Date	Type	Agency
1	Site Security Improvements	\$3,000,000.00		A/E Consultant	Transit
2	Fixed Asset Program Design Services	\$11,000,000.00		A/E Consultant	Transit
3	Equipment Replacement 21/22 - Atlantic Base Fuel Pump...	\$250,000.00		Construction	Transit
4	Down Town Redmond Link Extension Restructure Bus Sto...	\$500,000.00		Construction	Transit
5	South Facilities Roof Replacement	\$1,400,000.00		Construction	Transit
6	Central Base Parking Garage Gate/Arm System Replacem...	\$200,000.00		A/E Consultant	Transit

2024 | **100+ projects worth \$1 billion**