

Informational Open House for Upcoming Contracting Opportunities

King County Wastewater Treatment Division
September 4, 2024



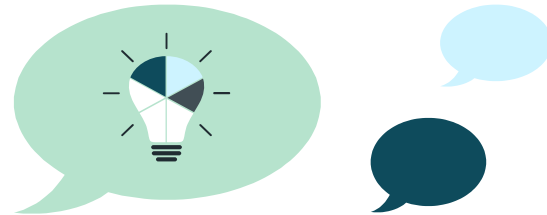
King County

Department of
Natural Resources and Parks
**Wastewater Treatment
Division**



WTD Capital Delivery

FACILITY PROGRAMS



WELCOME

During the presentation, please submit your
questions in the chat

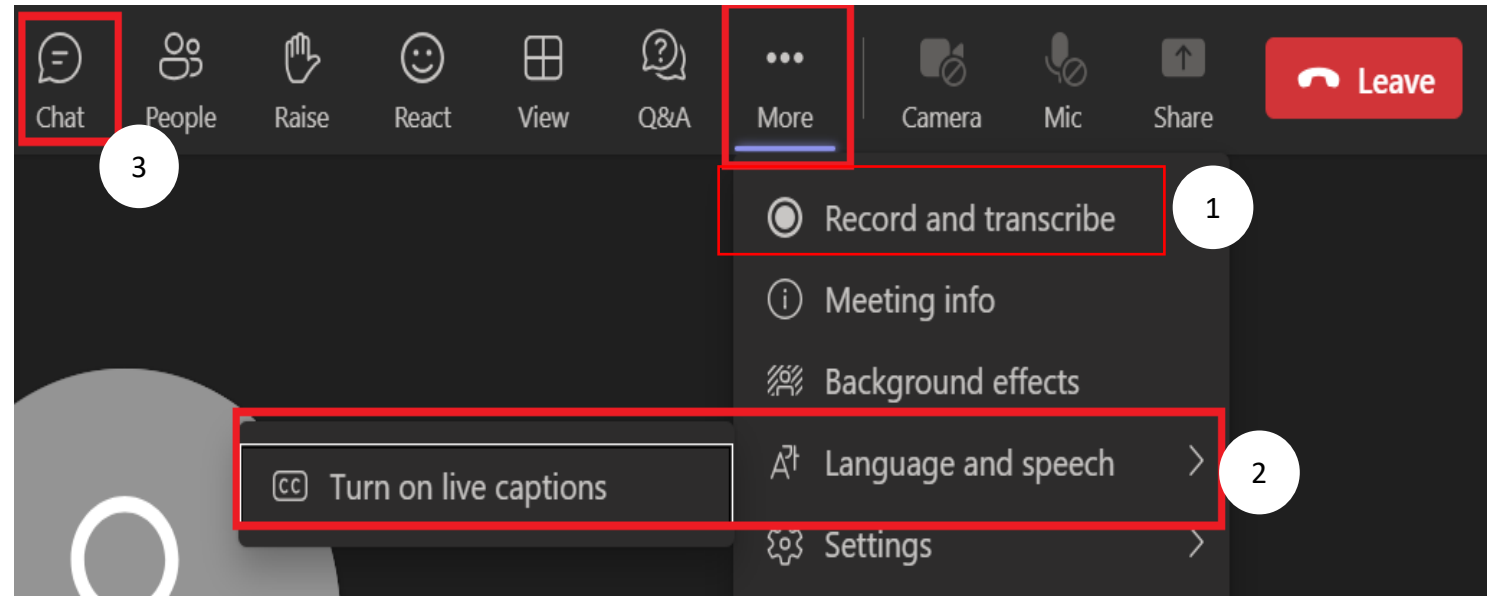


WTD Capital Delivery

FACILITY PROGRAMS

MICROSOFT TEAMS

- 1.Meeting is being recorded and will be posted online with this presentation in the next week
- 2.Closed captions available
- 3.Submit questions through the chat and someone will respond via chat or live during Q&A portion.



Agenda

- Staying Connected with WTD
- Project Overviews
 - South Interceptor Rehabilitation (PDB)
 - Black Diamond Trunk Capacity Upgrade (GC/CM)
 - Sammamish Plateau Diversion (GC/CM)
 - Mouth of Duwamish Combined Sewer Overflow (MDCSO) Wet Weather Facilities
- Procurement Requirements
- BDCC-Equity in Contracting
- Q&A

STAYING CONNECTED WITH WTD



WTD Capital Delivery

FACILITY PROGRAMS

King County Contractor Networking Event (April 15, 2024)

Back in April, WTD and other King County Agency Capital Groups hosted a successful in-person Contractor Networking Event and Open House in Federal Way, WA. We had King County presentations, 1:1 Contractor and Agency meeting opportunities, and networking time. The event was very well received and we hope to host this type of event annually.

Check out our Upcoming Contracts page under the Event date to find additional resources such as:

- [Contractor Outreach and Networking Event Guide \(Incl. Prime Contractor/Consultant info\)](#)
- [Contractor/Consultant Promo Information \(Incl. WMBE company info/contacts\)](#)
- And more!



Staying Connected with WTD

WTD's capital program is growing and will double in size within the next three years. This will continue to create ongoing contracting opportunities of all types. As such, WTD will be holding quarterly outreach events with the consulting and construction community.

Virtual Open Houses

Next Open House:
Q4 2024

WTD hosts meetings quarterly to discuss upcoming opportunities and highlight projects and contracts expected to advertise in the next 6 to 12 months.

In-Person Networking Events

WTD will be hosting a table and presenting upcoming projects at the Regional Contracting Forum on September 12, 2024 at McCaw Hall in Seattle, WA.

<https://rcfwashington.org>

1:1 Project Team Meetings

Next dates available:

October 9-16

Registration link will be available on WTD's Upcoming Contract Opportunities page

Upcoming Procurements

Construction Contracting Opportunities:

Project	Size	Advertise
South Plant Dewatering and Truck Loading Bay Ventilation - Sumon Kanpirom	\$0.9M	10/1/2024
Murray East Forcemain Rehabilitation - Stevn Larry	\$4M	10/1/2024
VTP Influent Gate Actuator - Henry Perrin	\$2.3M	12/16/2024
West Duwamish CSO Storage - Richard Huang	\$53M	2/1/2025
South Plant Biogas Near Term Modifications - Rebecca Gauff	\$11.5M	4/3/2025
South Plant Dissolved Air Flotation Tanks Rehabilitation - Moe Alavi	\$39.7M	4/23/2025
South Plant Division Channel Relining - Bry Polk	\$1.0M	7/1/2025
Lake Hills and NW Lake Sammamish Interceptor Upgrade - Liz Matson	\$70M	4/1/2026

Collaborative Delivery Construction Contracting Opportunities:

Project	Size	Advertise
Progressive DB Services for South Interceptor (Pending CPARB Approval) - Scott Mingus	\$36M	12/1/2024
GC/CM Services for Sammamish Plateau Diversion (Pending CPARB Approval) - Meredith Redmon	\$52.4M	12/1/2024
GC/CM Services for Black Diamond Trunk Capacity Upgrade (Pending CPARB approval) - Ann Fowler	\$75M	1/31/2025



WTD Capital Delivery

FACILITY PROGRAMS



Upcoming Work Orders

CM Services Work Order

- Anticipated Ad: October/November 2024
- NTE: \$25M

Scope will include CM and other related services, which may include, but are not limited to: project management and coordination, project and cost controls, scheduling, project documentation, as-needed program services, and other technical and professional advisory services.

Multidisciplinary Construction WO

- Anticipated Ad: October 2024
- NTE: \$8M *MCWA Required

Scope will include, but not be limited to: addressing minor asset management needs, mitigating of emergent issues for civil wastewater treatment infrastructure, exploratory excavation, major and minor piping system repairs, modifications, and relocations in conveyance system infrastructure, including underground and above-ground conveyance system infrastructure, regulator and pump stations and other related emergent work.

PROJECT OVERVIEWS



WTD Capital Delivery

FACILITY PROGRAMS

South Interceptor Rehabilitation (PDB)

Project Background and Need

- Inspection of the South Interceptor, conveying flows directly to South Treatment Plant (STP), showed significant levels of concrete degradation and corrosion due to hydrogen sulfide.
- A 90-inch segment conveys flows to the Eastside Interceptor, located inside STP, and further upstream joins parallel 72-inch and 108-inch interceptors.
- Conveys approx. 32MGD to STP.
- Rehabilitation required to prevent pipe failure.
- Area is zoned commercial, crossing under I-405 and an adjacent major arterial (Grady Way).
- Environmentally sensitive areas nearby.

Project Scope

Includes the rehabilitation of 1,623 linear feet of the South Interceptor and associated structures:

- Rehabilitation of 445 linear feet (LF) of 72-inch and 1,185 LF of 90-inch diameter reinforced concrete pipe.
- Rehabilitation of up to (7) maintenance holes.
- Modifications to junction structure at South Interceptor and Eastside Interceptor (located at South Treatment Plant), which may be necessary to isolate flows during rehabilitation.
- Design, installation and operation of sewer diversion pumping system (including all traffic control and restoration activities).

Milestone	Estimated Schedule
Anticipated PRC Approval	Q3 2024
Advertisement	Q3 2024
NTP	Q2 2025

Estimated Contract Cost:
\$36M

Black Diamond Trunk Capacity Upgrade (GC/CM)

Project Background and Scope

- Located in the City of Black Diamond on 228th Ave SE and Lake Sawyer Road SE
- Project is currently in design and evaluating alternatives for the upgrade approx. 6 miles of conveyance pipe.
- The existing pipe lengths to be replaced are as follows:
 - 10-inch pipe = 627 LF
 - 12-inch pipe = 7,309 LF
 - 15-inch pipe = 18,557 LF
 - MH 1 through MH 97 = 48-inch-diameter structures
- Both opencut and trenchless construction techniques are assumed
- Project will likely require early work packages through GC/CM Delivery

Project Schedule and Budget

Milestone	Estimated Schedule
Anticipated PRC Approval	Q4 2024
GC/CM Advertisement	Q1 2025
GC/CM NTP	Q2 2025

**Estimated
Contract Cost:
\$75M**



WTD Capital Delivery

FACILITY PROGRAMS

Sammamish Plateau Diversion (GC/CM)

Project Background and Need



The Sammamish Plateau Diversion project will address regional conveyance system capacity needs by diverting flows out of the South Lake Sammamish Planning Area north. Diverting flows northward will alleviate capacity needs at several King County conveyance facilities.



WTD Capital Delivery

FACILITY PROGRAMS

Project Scope

- Project will design and build a conveyance line capable of diverting up to 9.14 mgd of flow from the Southwest Lake Sammamish area north.
- Project is in Predesign and six preliminary alternatives have been identified to divert flows to King County's Northeast Lake Sammamish Interceptor. The alternatives vary based on:
 - Pipeline corridor
 - Hydraulic condition (gravity, tightline, Intermediate pump station and force main)

Milestone	Estimated Schedule
Anticipated PRC Approval	Q4 2024
Advertisement	Q1 2025
NTP	Q2 2025

**Estimated Contract Cost:
\$52.4M**

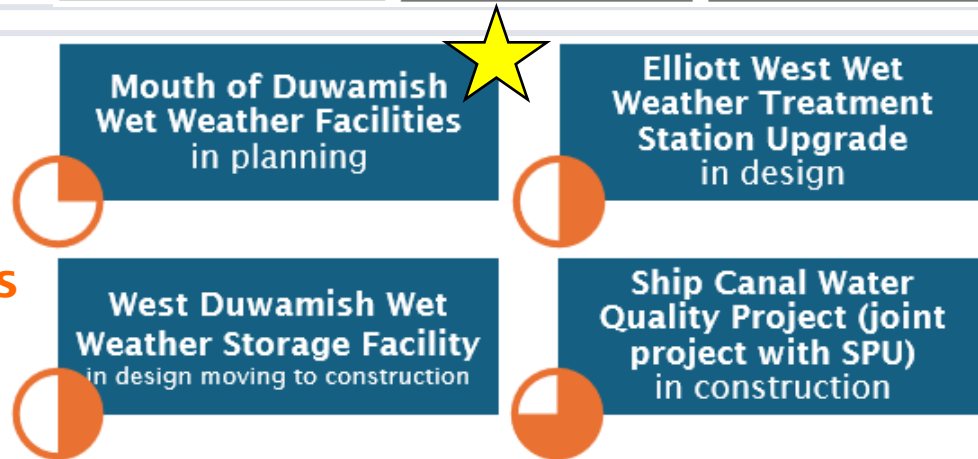
Mouth of Duwamish Combined Sewer Overflow (MDCSO) Wet Weather Facilities

CSO Delivery Program

Completed CSO Control Projects

Ballard Siphon Project	Barton CSO Control Project	Murray CSO Control Project	North Beach CSO Control Project
Georgetown Wet Weather Treatment Station	Rainier Valley Wet Weather Storage Project	South Magnolia CSO Control Project	

Active CSO Control Projects



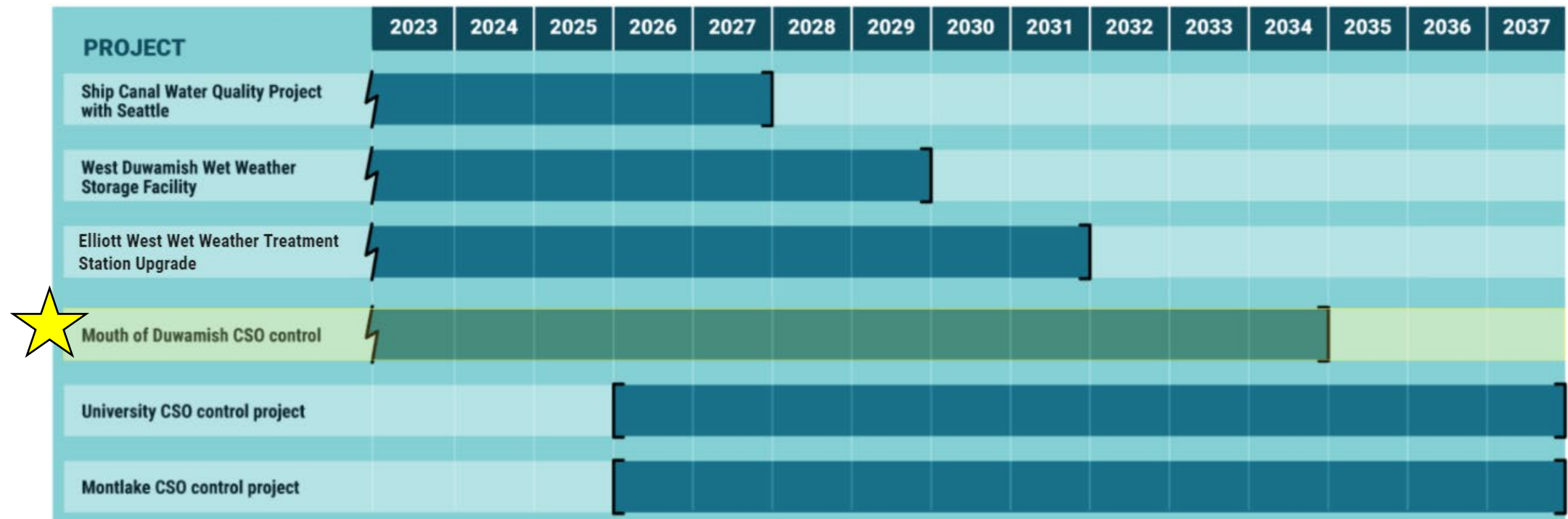
Remaining CSO Control Projects

University/Montlake CSO Control	Supplemental Compliance (Barton, Magnolia, Hanford #1)
---------------------------------	--

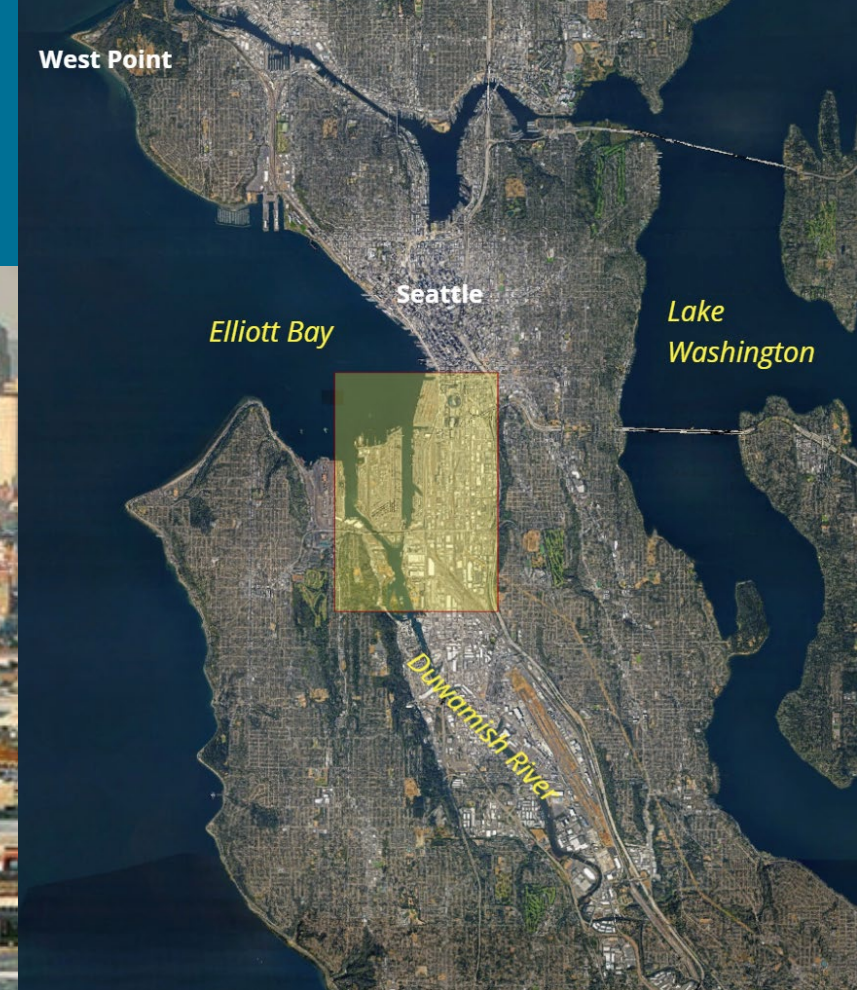


CSO Delivery – Problem Definition

- Delivery of the CSO Program must meet stringent Consent Decree (CD) schedule requirements.
- The schedule requires efficiency and demands resources, processes, and workflows that may not currently exist and/or need to be redefined



Mouth of Duwamish Wet Weather Facilities Program Description



An integrative solution to control the discharges of five CSO outfalls that occur during wet weather events in Seattle, flowing to the mouth of the Duwamish River.

Program Objectives

- Deliver facilities to **control sewer overflows** during wet weather in the Duwamish River.
- Achieve **regulatory compliance** per RCW 90.48 and WAC 173-245.
- Appropriately **incorporate King County initiatives** including Equity and Social Justice and Strategic Climate Action Plan goals.
- Manage **multiple projects in a coordinated way**, with benefits that could not occur if the projects were handled separately.

Focus on solving 5
overflow points



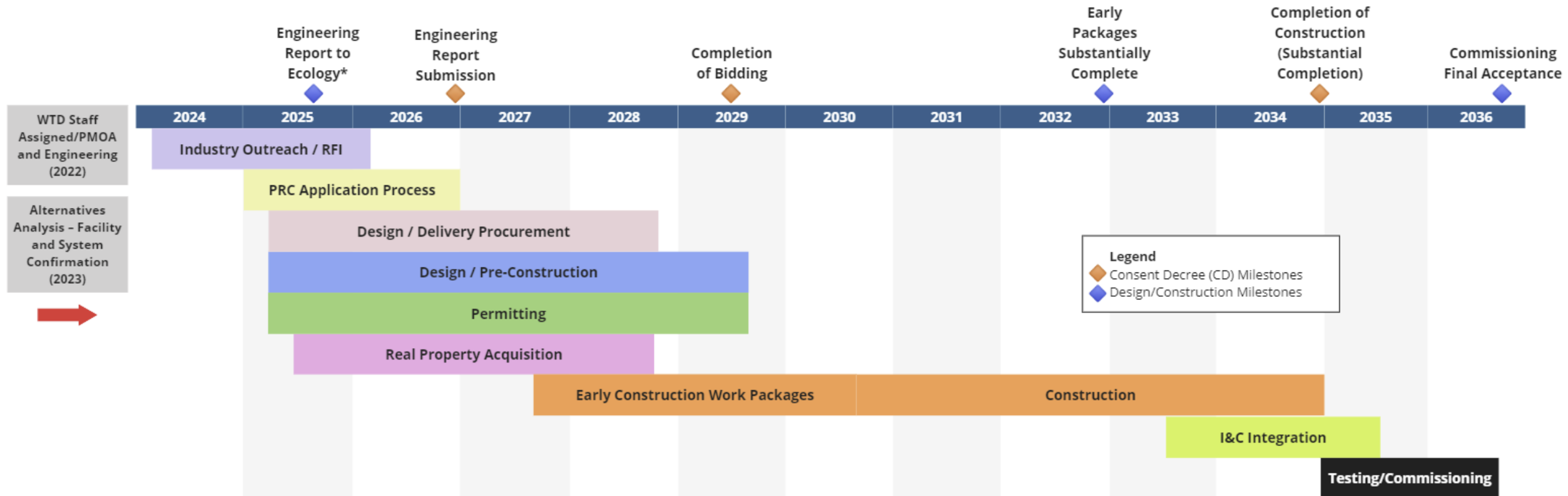
What We Are Building

Infrastructure to convey, store and treat combined sewer flow during storm events to avoid CSOs.

- Wet weather treatment facilities
- Wet weather storage facilities
- Diversion structures
- Conveyance pipelines
- New outfall
- System integration and SCADA

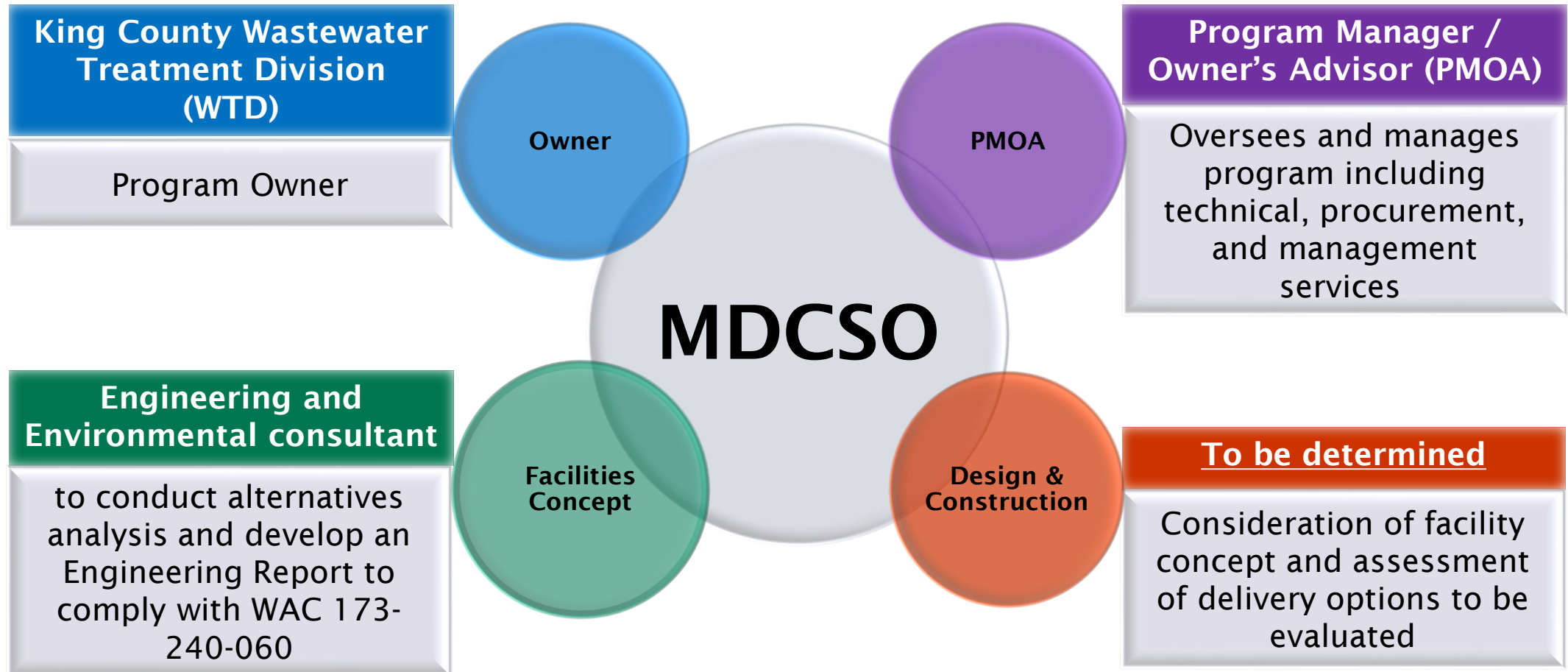


MDCSO Timeline/Roadmap



*Engineering Report to Ecology: Consent Decree milestone is in December 2026.

Program Team Overview



Draft Package Plan

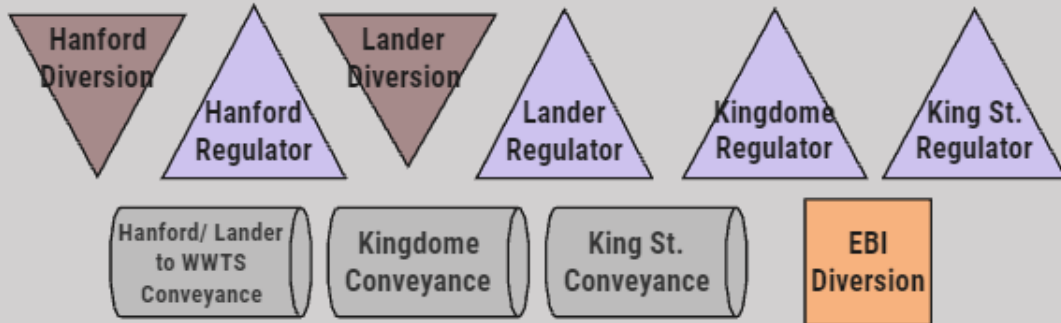
1. WWTS



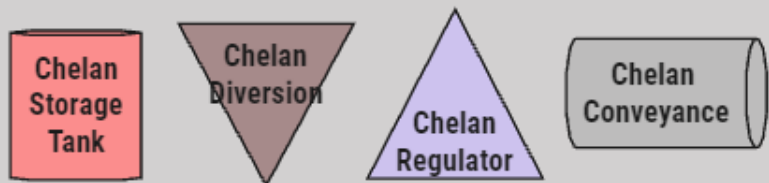
2. Effluent Outfall & Conveyance



3. Influent Conveyance



4. Chelan



Delivery Strategy in Development

Key Factors

- Risk Allocation
- Industry Attractiveness
- Market Conditions
- Package Interfaces
- Package Sequencing
 - Early progress
 - Commissioning

Equity and Social Justice (ESJ) Values and Objectives

Pro-Equity Contracting Goal

MDCSO projects will seek to go beyond meeting pro-equity contracting goals to promote long-term economic success of M/WBE businesses.

SBE, DBE and M/WBE Firm Participation

Mentoring and Support



Equity and Social Justice (ESJ) Values and Objectives

Workforce Development Goal

MDCSO projects must meet the Master Community Workforce Agreement (MCWA) and seeks to connect under-represented communities in the program area with long-term, family-sustaining jobs.

Priority Hire

Workforce Requirements



Fall Job Fair

October 23, 2024, 4-7PM | South Seattle College

Contracting Opportunities

MDCSO Program will be divided into **work packages** to deliver an array of projects.

We are developing a delivery plan and will have more information about opportunities in 2025, after the best apparent system alternative (BASA) is determined.

Different types of delivery methods are under consideration:

- Design-Bid-Build (DBB)
- General Contractor/Construction Manager (GC/CM)
- Progressive Design Build (PDB)

For more information, contact:	Steve Tolzman, MDCSO Program Supervisor	Steve.tolzman@kingcounty.gov (206) 477-5459
	Maud de Bel, Supervisor, CSO Control Projects	mdebel@kingcounty.gov (206) 263-8472



King County

Department of Natural Resources and Parks
Wastewater Treatment Division

Mouth of Duwamish CSO PROGRAM



Thank you!

PROCUREMENT

Strategy and Requirements



WTD Capital Delivery

FACILITY PROGRAMS

Register on E-Procurement Portal

The screenshot shows the 'Register Supplier: Company Details' page of the King County E-Procurement Portal. The page has a blue header with the King County logo and navigation icons. A progress bar at the top indicates seven steps: 1. Company Details (active), 2. Contacts, 3. Addresses, 4. Business Classifications, 5. NAICS Codes, 6. Rosters and Certifications, and 7. Review. Below the progress bar, the title 'Register Supplier: Company Details' is followed by a help icon and a set of buttons: 'Back', 'Next', 'Save for Later', 'Register', and 'Cancel'. A red instruction line states: 'Please complete all required fields. Select "Next" or "Save for Later" after entering your contact information.' The form fields are organized into two columns. The left column includes: 'Supplier/Company Name' (text input), 'Tax Organization Type' (dropdown menu), 'Supplier Type' (dropdown menu), and 'Corporate Web Site' (text input). The right column includes: 'Tax Country' (dropdown menu) and 'Taxpayer ID' (text input). Below these columns is a note: '* Required: attach a completed King County Substitute W-9. Find the link in the help bubble. None'. The 'Additional Information' section contains: 'W-9 Attachment Date' (text input with a calendar icon), 'UBI Number' (text input), and 'WA State Contractor License' (text input). The 'Your Contact Information' section includes a sub-header and a note: 'Enter the contact information for this registration. This contact will be assigned as the default Admin and Bidder for the Supplier.' It contains four text input fields: '* First Name', '* Last Name', '* Email', and '* Confirm Email'.

- All active solicitations will be advertised through King County's **E-Procurement portal**.
- [Register](#) your firm to participate in solicitations.
- Only 1 company profile allowed; multiple contacts can be added to the same company profile.
- **Required:** A complete [W-9 Taxpayer Identification \(IRS W9\)](#) form along with other firm details.
 - [Select all NAICS Codes](#) that apply to your company to ensure you receive invitations to the right solicitations.
 - Complete all the required fields (*) & train stops when registering.

Solicitation Abstracts

All communication must be through the Contract Specialist

King County

Solicitation Abstracts

Welcome to King County E-Procurement Portal

This page displays solicitations for King County. Clicking on the "Details" of a solicitation below will display a summary of the solicitation.

Suppliers must register with King County as an **E-Procurement Supplier** to gain full access in the supplier portal to download attachments and submit a response to any solicitation. Information on registering with King County as an E-Procurement Supplier, as well as resources to assist with navigating the supplier portal, can be found by following the link below:

<https://kingcounty.gov/procurement/registration>

After registration, the link to the E-Procurement Sign-in page is below:

<https://kingcounty.gov/procurement/supplierportal>

Information such as a list of suppliers that have expressed interest in solicitations, suppliers that have attended pre-bid or pre-proposal meetings, or submittals received by King County on past procurements can be found on the Solicitation Resources Page:

<https://kingcounty.gov/depts/finance-business-operations/procurement/for-business/solicitation-resources.aspx>

Search

View

Solicitation	Title	Solicitation Type	Status	Posting Date	Open Date	Close Date	Details
KC000021.3	Engineering Services for Cedar Hills Regional Landfill Area 9	A&E Solicitation	Active	1/19/21 02:52:0...	12/18/20 01:26:...	1/21/21 12:00:5...	
KC000073	RFP EcoConsumer Outreach and Waste Prevention Program	G&S Solicitation	Active	1/15/21 05:20:1...	1/15/21 05:20:1...	2/9/21 02:00:59...	

Abstract: G&S Solicitation KC000073

Title: RFP EcoConsumer Outreach and Waste Prevention Program
Solicitation Type: G&S Solicitation
Status: Active
Buyer: Michelle Poste
Email: Michelle.Poste@kingcounty.gov
Synopsis: To assist King County Solid Waste Division (SWD) in developing and operating its EcoConsumer Outreach and Waste Prevention Program (EcoConsumer)

Open Date: 1/15/21 05:20:11 PM
Close Date: 2/9/21 02:00:59 PM
Posting Date: 1/18/21

Additional Information

Pre-Bid/Proposal Conference Date: //
Second Pre-Bid/Proposal Conference Date: //
Pre-Bid/Proposal Location: No Pre-Proposal conference //
Last Date for Questions: 2/2/21 05:00:00 PM

Bid Opening Location: N/A //
Small Business Requirements Apply?: No //
Department: //
Division: //

- View publicly advertised solicitations on the [Solicitation Abstracts](#) page and create a response by logging in to E-Procurement.
- High-level details on the solicitation provided:
 - Solicitation Number, Title, Status, Open & Close Dates, along with the solicitation documents

BUSINESS DEVELOPMENT & CONTRACT COMPLIANCE

Equity in Contracting



WTD Capital Delivery

FACILITY PROGRAMS

Equity & Social Justice (ESJ) Goals

- Diverse business goals are funding dependent (MBE, WBE, MWBE, DBE, SBE, etc.)
- Must be certified by the Office of Minority and Women's Business Enterprises (<https://omwbe.wa.gov/>)
- Focus on Outreach, Mentorship and Advancing ESJ
- Dedicated ESJ Coordinator
- Workforce Development Goals



For more information visit kingcounty.gov/bdcc

King County Tabor 100 Office Hours

King County staff from the Business Development and Contract Compliance Office are onsite and available at the [Tabor 100 Hub](#) during the following times to offer personalized consultations and information on resources and tools to assist business owners who have an interest in doing business with King County:

- Mondays: 10:00 AM – 1:00 PM
- Wednesdays: 1:00 PM – 3:00 PM



For appointment scheduling, business owners may visit [King County Tabor 100 Office Hours](#) to schedule a 30-minute appointment.

Master Community Workforce Agreement (MCWA)

- Pre-Hire Collective Bargaining Agreement (CBA) between King County and the construction Labor Unions
- Covers all County covered projects \$5 million and over
- Community Workforce Agreement with Priority Hire and Preferred Entry requirements
- Sets basic terms and conditions of employment on covered public works construction projects

For more information visit: kingcounty.gov/priorityhire



WTD Capital Delivery

FACILITY PROGRAMS

Priority Hire Program

- Workforce and Economic Development Strategy:
Addresses construction workforce shortage, diversifying the construction workforce, providing access to opportunities to disadvantage communities and furthers the County's Equity and Social Justice Strategic Plan
- Prioritizes individuals living in economically distressed areas (Priority Hire ZIP codes) of King County
- Provisions in Priority Hire Ordinance (18672) and as outlined in K.C.C. 12.18A, and the Contract Specifications that includes the MCWA

For more information visit: kingcounty.gov/priorityhire

Q&A

Please submit questions in the chat



WTD Capital Delivery

FACILITY PROGRAMS

WTD Staff Contact Info:

South Interceptor
Black Diamond Trunk Capacity Upgrade
Sammamish Plateau Diversion
MDCSO Wet Weather Facilities

Scott Mingus – scott.mingus@kingcounty.gov
Ann Fowler – afowler@kingcounty.gov
Meredith Redmon – meredith.redmon@kingcounty.gov
Stan Hummel – stan.hummel@kingcounty.gov

For all other project inquiries:

Jeni Bonenfant
WTD Project Control Supervisor
Email: Jeni.Bonenfant@kingcounty.gov

Website: [WTD Upcoming Contract Opportunities](#)



Thanks for attending

Check our website regularly for updates on upcoming events and opportunities:

[WTD Upcoming Contract Opportunities](#)



WTD Capital Delivery

FACILITY PROGRAMS