

Informational Open House for Upcoming Contracting Opportunities

King County Wastewater Treatment Division
December 12, 2024



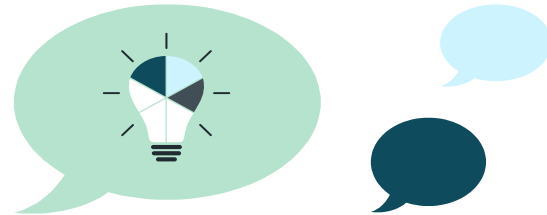
King County

Department of
Natural Resources and Parks
**Wastewater Treatment
Division**



WTD Capital Delivery

FACILITY PROGRAMS



WELCOME

During the presentation, please submit your
questions in the chat

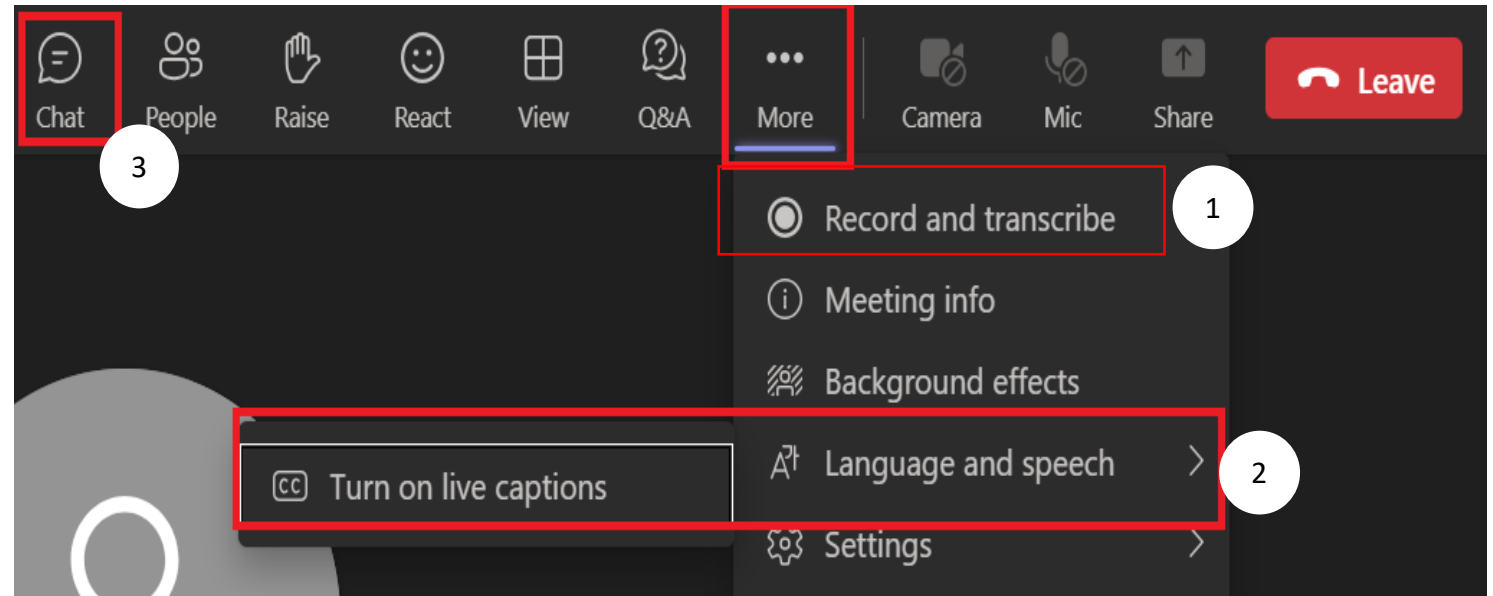


WTD Capital Delivery

FACILITY PROGRAMS

MICROSOFT TEAMS

- 1.Meeting is being recorded and will be posted online with this presentation in the next week
- 2.Closed captions available
- 3.Submit questions through the chat and someone will respond via chat or live during Q&A portion.



Agenda

- **Staying Connected with WTD**
 - News and Updates
- **Upcoming Procurements**
 - Project Schedule Updates for Upcoming Collaborative Delivery Projects
 - Upcoming Program Contracts
 - Upcoming Work Order Contracts
- **Project Overviews**
 - STP Influent Pump Station Upgrades (GC/CM)
 - Division Wide Offsite Level Controls & Communication Upgrade (GC/CM)
 - West Duwamish CSO Storage (ITB)
 - Program Update: MDCSO Wet Weather Facilities
- **Procurement Requirements**
- **BDCC-Equity in Contracting**
- **Q&A**

STAYING CONNECTED WITH WTD



WTD Capital Delivery

FACILITY PROGRAMS

Staying Connected with WTD – News and Updates

Check out our [Upcoming Contract Opportunities](#) page for:

- Upcoming Projects (Updated for [Quarter 4](#))
- Consultant/Contractor Resource:
[MBE/WBE/SCS Networking Information](#)

If you would like to include your firm's information in this resource, please email dinavarro@kingcounty.gov the following:

- Company Name
- Brief description of service offerings
- Certifications
- Contact Name/Phone/Email
- Website address

Welcome Our New Team Member:



Margo Iñiguez Dawes
WTD's Capital Equity
Program Manager

Do you have wastewater-related training for other Subcontractors/consultants you want to share? Let us know!

Staying Connected with WTD – Upcoming Events

WTD's capital program is growing and will double in size within the next three years. This will continue to create ongoing contracting opportunities of all types. As such, WTD will be holding quarterly outreach events with the consulting and construction community.

Virtual Open Houses

Next Open House:
Q1 2025

WTD hosts meetings quarterly to discuss upcoming opportunities and highlight projects and contracts expected to advertise in the next 6 to 12 months.

In-Person Networking Events

King County's Capital Project groups plan to host an in-person Networking Event and Open House on **April 16, 2025**.

Stay tuned for more details!

1:1 Project Team Meetings

Next dates available:
January 21-29, 2025

Sign Up link is now available on WTD's Upcoming Contract Opportunities page



WTD Capital Delivery

FACILITY PROGRAMS

UPCOMING PROCUREMENTS



WTD Capital Delivery

FACILITY PROGRAMS

Upcoming Procurements

Construction Contracting Opportunities:

Project	Size	Advertise
South Plant Essential Services Standby Generator Replacement - Elliot Jarvimaki	\$1.4M	12/2/2024
Murray East Forcemain Rehabilitation - Stevn Larry	\$4M	12/6/2024
VTP Influent Gate Actuator - Henry Perrin	\$2.3M	12/16/2024
South Plant Dewatering and Truck Loading Bay Ventilation - Sumon Kanpirom	\$1.3M	12/27/2024
Jameson Arcweld Building Demo	\$1M	1/15/2025
West Duwamish CSO Storage - Richard Huang	\$53M	2/1/2025
South Plant Biogas Near Term Modifications - Rebecca Gauff	\$11.5M	4/3/2025
South Plant Dissolved Air Flotation Tanks Rehabilitation - Doug Lowman	\$34.7M	4/23/2025
Lake Hills and NW Lake Sammamish Interceptor Upgrade - Liz Matson	\$70M	4/1/2026

Collaborative Delivery Construction Contracting Opportunities:

Project	Size	Advertise
South Plant RSP #3, Seismic Upgrades, and Division Channel Recoating (Pending CPARB Approval) - Bry Polk	\$25M	1/24/2025
GC/CM Services for Black Diamond Trunk Capacity Upgrade (Pending CPARB approval) - Ann Fowler	\$75M	2/12/2025
Progressive DB Services for South Interceptor - Scott Mingus	\$36M	3/24/2025
GC/CM Services for Sammamish Plateau Diversion (Pending CPARB Approval) - Meredith Redmon	\$52.4M	6/18/2025
Mouth of Duwamish CSO Program Contract Package (To be defined through RFI response and Delivery Type Determination) (Pending CPARB Approval)	TBD	12/8/2025



WTD Capital Delivery

FACILITY PROGRAMS

Collaborative Delivery Projects

Schedule Updates

Project Name	CPARB-PRC Date	RFP Advertisement Date (Anticipated)
Black Diamond GC/CM	Approved 12/5/2024	2/12/2025
STP Influent Pump Station Upgrades	Anticipated 1/23/2025	2/14/2025
South Interceptor Rehabilitation PDB	Approved 9/26/2024	3/24/2025
Sammamish Plateau Diversion GC/CM	Anticipated 2/27/2025	6/23/2025



WTD Capital Delivery


FACILITY PROGRAMS



Upcoming Program Contracts

WTD is in the process of establishing capital delivery programs at several of our facilities. In continuing this effort, WTD has three (3) upcoming programmatic contracts to be procured to provide a wide variety of services to support the delivery of projects planned at these facility programs:

- Program Engineering services for the Brightwater Facility Program
 - Anticipated Advertisement: January 2025
(Cone of Silence in effect)
- Program Manager/Owner Advisor services for the West Point Treatment Plant Facility Program
 - Anticipated Advertisement: February 2025
- Program Engineering services for the Supplemental Compliance and Corrective Action CSO Program
 - Anticipated Advertisement: March 2025



Upcoming Work Orders

CM Services Work Order

- Anticipated Ad: January 2025
- NTE: \$25M

Scope will include CM and other related services, which may include, but are not limited to: project management and coordination, project and cost controls, scheduling, project documentation, as-needed program services, and other technical and professional advisory services.

Multidisciplinary Construction WO

- Anticipated Ad: December 2024

(Cone of Silence in Effect)

- NTE: \$8M *MCWA Required

Scope will include, but not be limited to: addressing minor asset management needs, mitigating of emergent issues for civil wastewater treatment infrastructure, exploratory excavation, major and minor piping system repairs, modifications, and relocations in conveyance system infrastructure, including underground and above-ground conveyance system infrastructure, regulator and pump stations and other related emergent work.

Work Order Procurement Schedule

Type	Description	Est. \$	Est. Ad
CON	Multidisciplinary Construction WO*	\$8M	Dec 2024 /Jan 2025
AE	Mechanical/Electrical Engineering Services*	\$1M	1/7/2025
AE	Construction Management Services	\$25M	1/30/2025
AE	Multidisciplinary Engineering Services	\$1M	3/10/2025
CON	Civil/Structural Construction*	\$3M	2/4/2025
*Under Cone of Silence			



WTD Capital Delivery

FACILITY PROGRAMS

PROJECT OVERVIEWS



WTD Capital Delivery

FACILITY PROGRAMS

STP Influent Pump Station Upgrades (GC/CM)

Project Background and Need

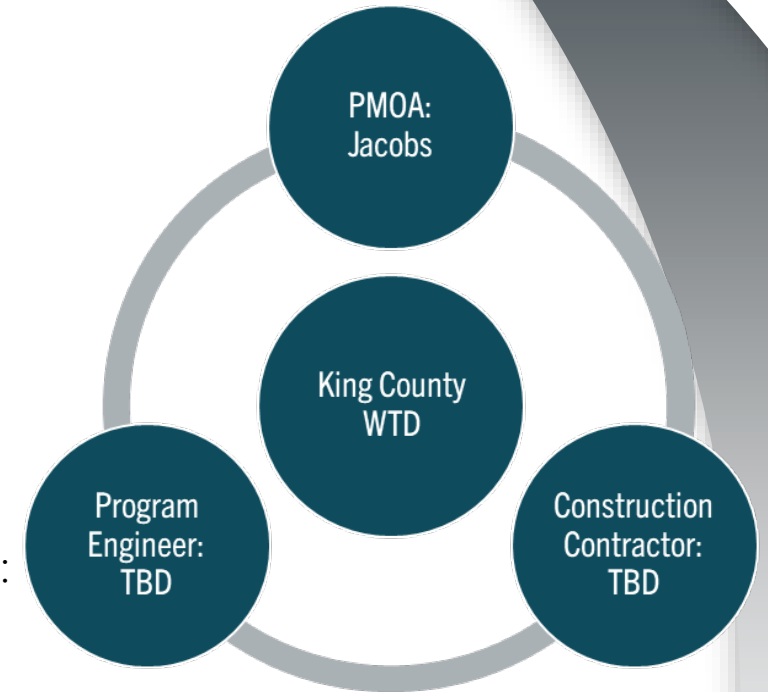
- Program Background

- Deliver 6-year CIP
- Over \$700M
- Will deliver multiple projects and subprograms

- Project Background

Bundle three individual capital projects under one GC/CM delivery contract:

- Recoating of division channel to replace existing failing lining
- Replace aging raw sewage pump #3 to regain capacity
- Improve seismic resilience of influent pump station



Why GC/CM?

- Influent Pump Station must remain in operation
- Complex technical work environment involving critical equipment replacements, sequencing, and specialized work
- Complex phasing/scheduling involving multiple dry season construction windows, long lead-time equipment, and startup/shutdowns

Project Scope

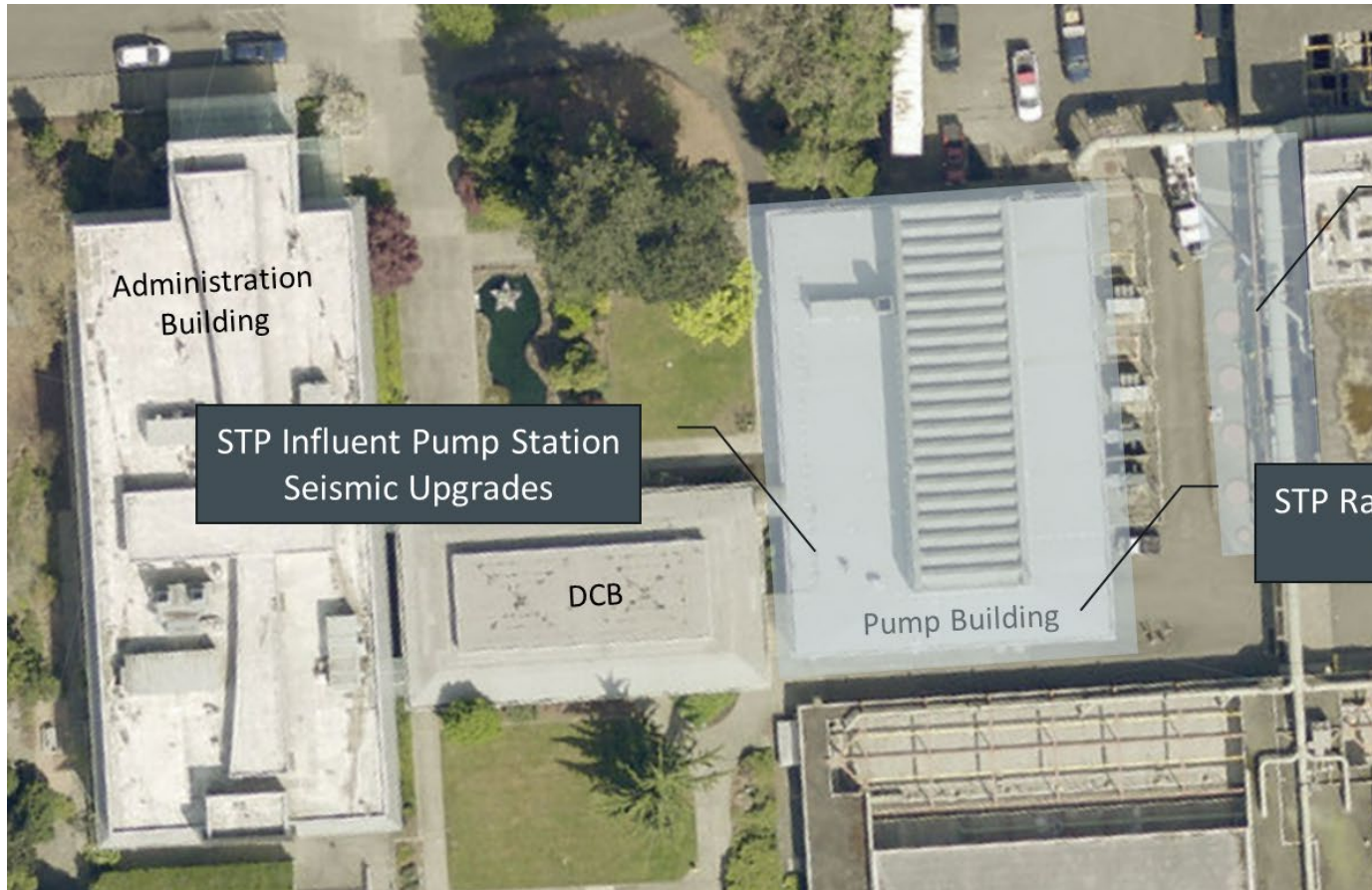
- STP Division Channel Recoating
 - Remove failing lining and apply new coating
 - Dry weather season
 - \$1.5M Construction
- STP Raw Sewage Pump #3 (RSP #3) Replacement
 - Replace existing motor, drive, and pump
 - Dry weather season
 - \$5.8M Construction
- STP Influent Pump Station Seismic Upgrades
 - Structural retrofits to the Pump Building to improve seismic resiliency
 - Dry weather season
 - \$15.4M Construction



WTD Capital Delivery

FACILITY PROGRAMS

Project Area



Administration
Building

STP Influent Pump Station
Seismic Upgrades

DCB

Pump Building

STP Division Channel
Recoating

STP Raw Sewage Pump #3
Replacement



WTD Capital Delivery

FACILITY PROGRAMS

Project Schedule and Cost

Milestone	Estimated Schedule
Anticipated PRC Approval	Q1 2025
Advertisement	Q1 2025
NTP	Q3 2025

Estimated Contract Cost:
\$22.7M



WTD Capital Delivery

FACILITY PROGRAMS

Division Wide Offsite Level Controls & Communication Upgrade Program (Potentially GC/CM)



Program Background and Need

- WTD currently utilizes Siemens (Moore) Model 353 single-loop level indicating controllers (LIC) for wet well level control. The manufacturer Siemens issued a product retirement notification in 2017, signifying the end of production for these controllers. Siemens does not plan to offer replacement controllers of the same size, configuration, or with the same capabilities as those currently in use at WTD facilities.
- Due to Siemens parts support for the Moore controllers being limited to current stock on hand, WTD operations is struggling to locate replacement parts for the Moore controllers and has had to resort to surplus and auction sites to procure replacement circuit boards. Because of this obsolescence, firmware versions of the programmable logic controllers (PLC) have lagged, increasing WTD's risk exposure to functional errors within the software. A failure of either the PLC or Moore LIC could result in a sanitary sewer overflow event at an offsite facility.



WTD Capital Delivery

FACILITY PROGRAMS

Why GC/CM?

- GC can actively monitor construction quality to ensure adherence to specifications supporting the program success criteria no. 1 Reduce or eliminate facility overflows/downtime resulting from level control systems and associated communications.
- GC/CM delivery method supporting the program success criteria no. 4 Improve procurement schedule lead times and reduce design and build costs through standardize implementation.
- The number of sites included in this program will be overwhelming DBB delivery method. GC/CM supporting the program success criteria no. 5 Standardize on material and manufacturer selections to improve on operability, maintenance, and spare parts.
- GC supports the program success criteria no. 8 Drive design consistency between projects and facilities (standardized programming, equipment selection, work tasks, etc.)
- Other benefits are



WTD Capital Delivery

FACILITY PROGRAMS

Program Scope

- The scope of this program is to bring all offsite facility wet well level controls and communications equipment into conformance with WTD Design Standards to improve safety, reliability, and operability. This program will replace obsolete level controls and communications equipment at Pump Stations (PS,) Regulator Stations (RS,) and Combined Sewer Overflow (CSO) facilities located throughout the service area.
- The scope of this program will encompass 68 offsite facilities. The program scope includes program specific tasks only. Project specific tasks and deliverables will align with the WTD Project Management Manual and PgMP.

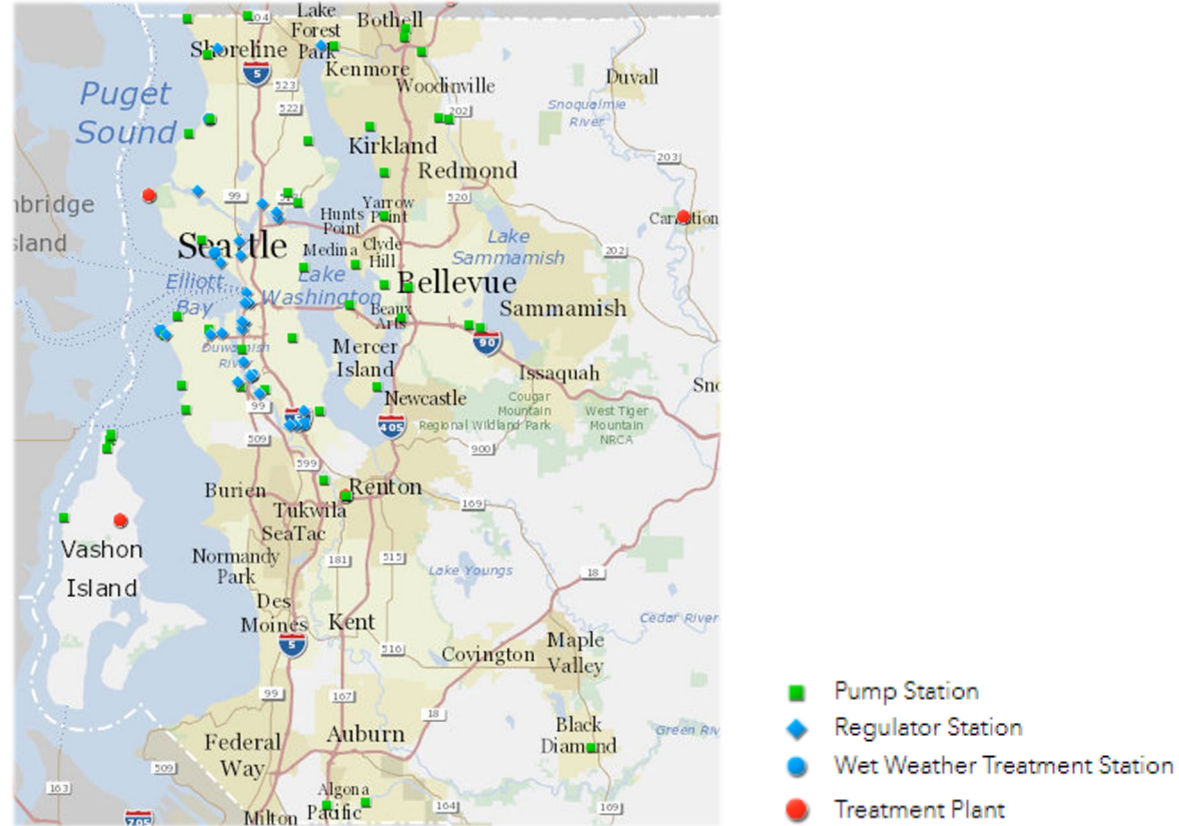


WTD Capital Delivery

FACILITY PROGRAMS

Program Area

- All offsite facilities, 68 offsite facilities, including 41 pump stations, 23 regulator stations, and 4 CSOs are selected to be included in the program (24 offsite facilities TBE).



Program Schedule and Cost

Milestone	Estimated Schedule
Anticipated PRC Approval	Q2 2025
Advertisement	Q4 2025
NTP	Q4 2025/Q1 2026

**Estimated Approx.
Construction Contract Cost:
\$175.5M**

West Duwamish CSO Storage (ITB)

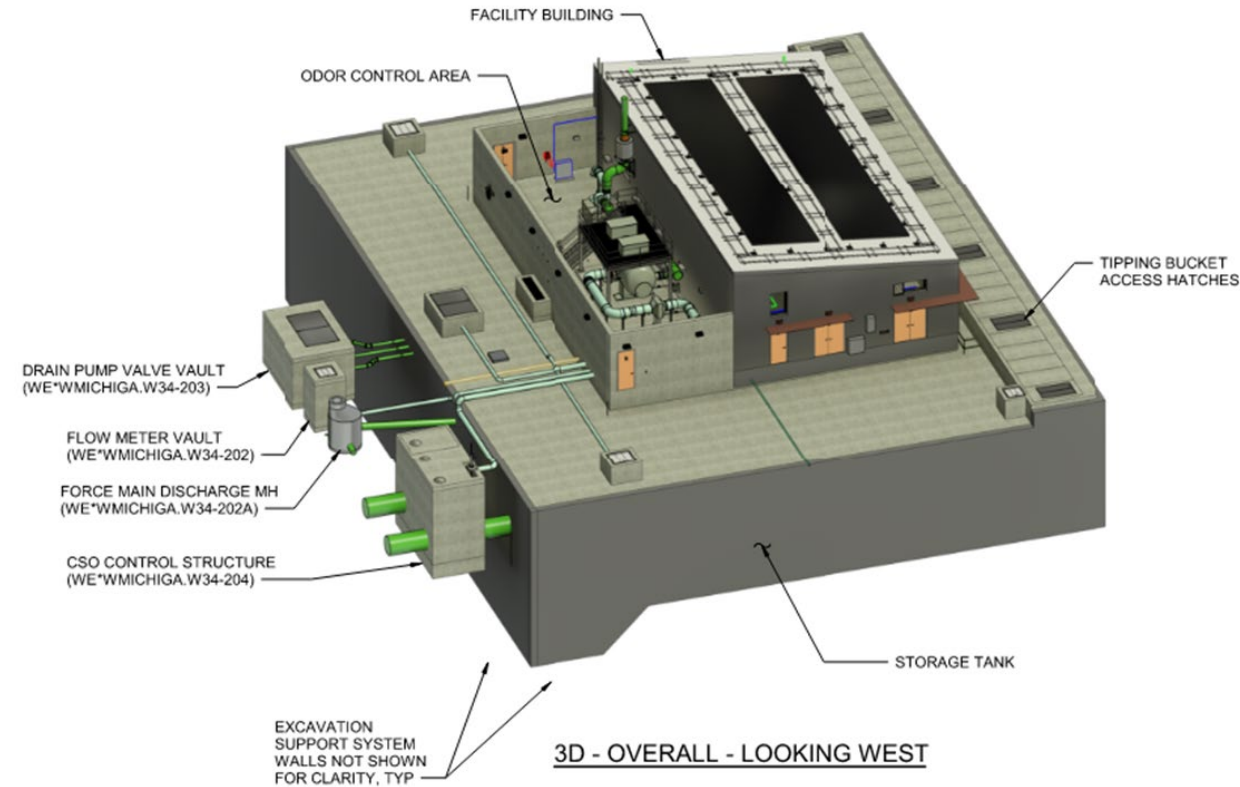
Project Background and Need

- To reduce CSOs at the West Duwamish Outfall and the T115 Outfall.
- Project currently working towards completing 100% Design.



Project Scope

- Buried storage tank (1.25 million gallons of storage) with deep soil mixing underneath; 35' deep excavation
- Above-grade facility building and outdoor odor control area
- Modifications to existing T115 Overflow Structure
- New diversion structure
- Improvements to existing systems at W Michigan St Regulator Station, including new standby generator



Project Area



WTD Capital Delivery

FACILITY PROGRAMS

Project Schedule and Cost

Milestone	Estimated Schedule
Anticipated Advertisement	Q1 or Q2 2025
NTP	Q3 2025
Substantial Completion	Q2 2028

**Estimated Contract Cost:
\$50M**



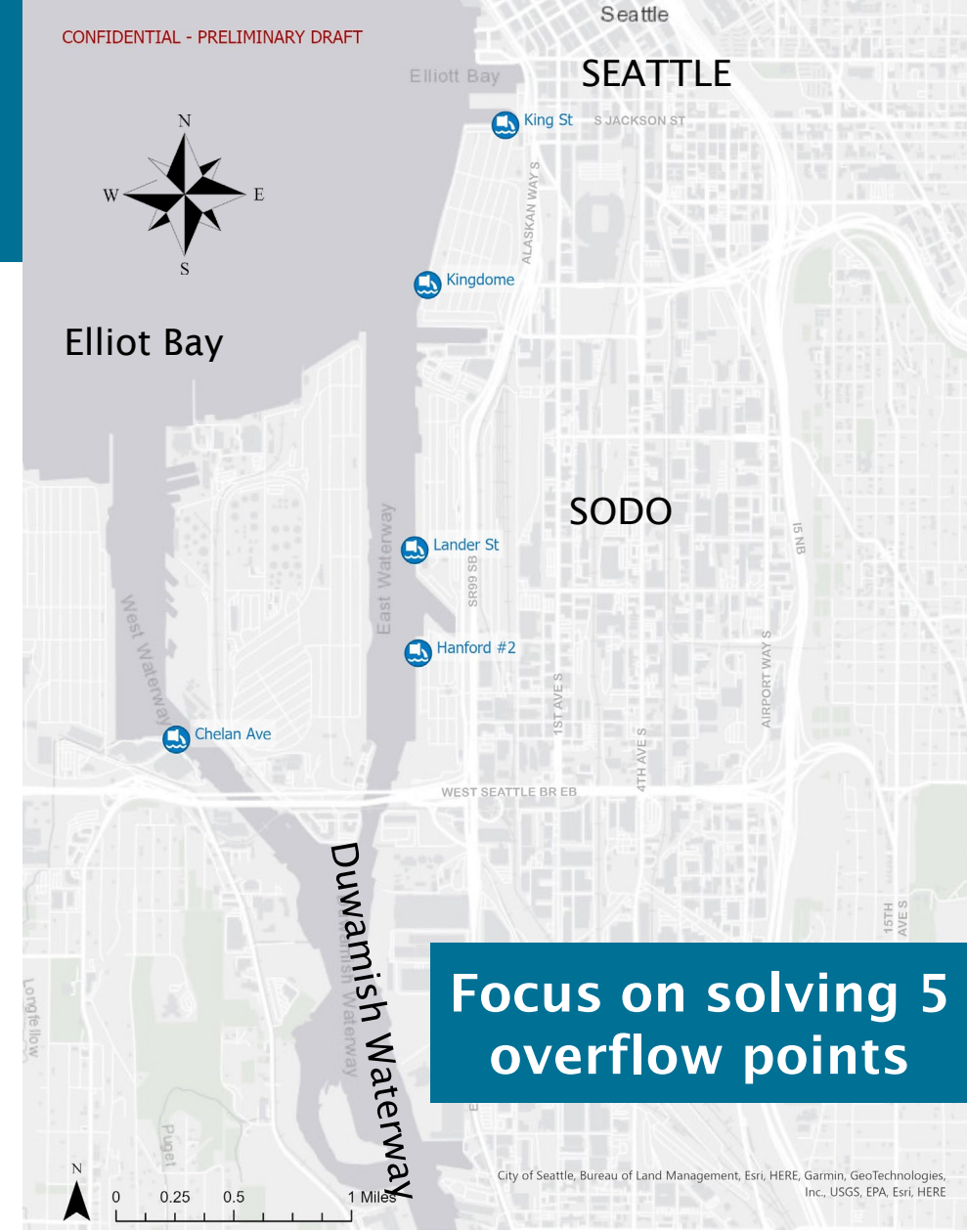
WTD Capital Delivery

FACILITY PROGRAMS

**Program Update:
Mouth of Duwamish Combined Sewer
Overflow (MDCSO) Wet Weather
Facilities**

MDCSO Program Objectives

- Deliver facilities to **control sewer overflows** during wet weather in the Duwamish River.
- Achieve **regulatory compliance** per RCW 90.48 and WAC 173-245.
- Appropriately **incorporate King County initiatives** including Equity and Social Justice and Strategic Climate Action Plan goals.
- Manage multiple projects in a coordinated way, with benefits that could not occur if the projects were handled separately.



[Combined sewer overflow status - King County, Washington](#)

MDCSO Request for Information (RFI)

About the RFI

- Issued on October 4, 2024
- **Objective:** Gather insights from the industry on the development of MDCSO Program packages, delivery methods, pro-equity contracting considerations, and market conditions to inform the Delivery Plan.

Industry Responses

- Received responses from seven different contractors.
- Responses submitted electronically through E-Procurement Portal.
- An Executive Summary of the responses has been published on the King County E-Procurement Portal as of November 15, 2024.

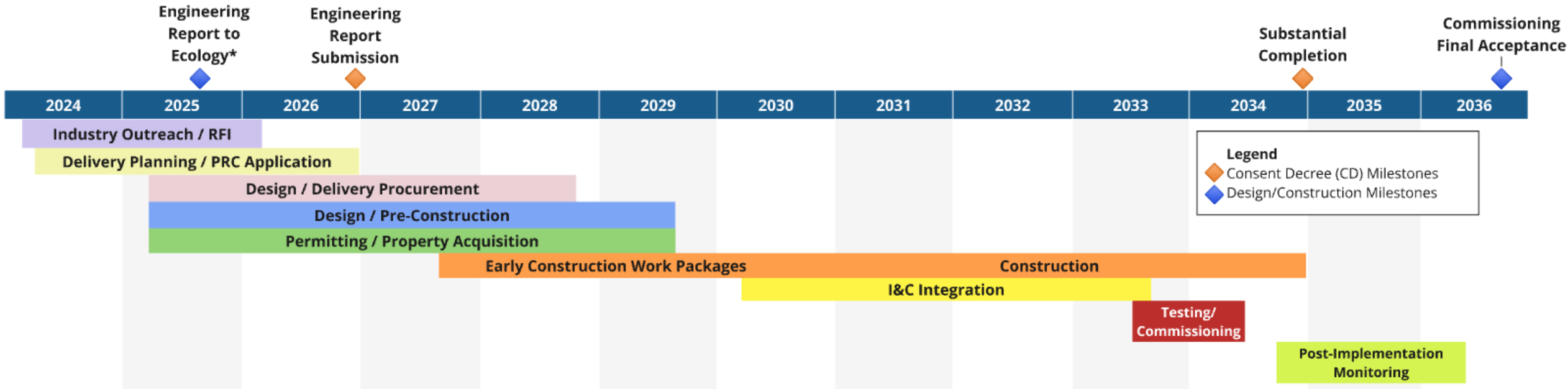
Factors Addressed

- Contract Size
- Joint Venture (JV) Considerations
- Program Packaging
- Delivery Methods
- Systems Integration
- Equity and Social Justice
- Market Conditions

2025 MDCSO Look Ahead

Key Items for Industry Awareness

- MDCSO Program will incorporate industry feedback from the RFI into the Delivery Plan, which is planned to be available April 2025.
- WTD will continue to conduct one-on-one meetings with contractors to gather feedback.
- Another RFI may be developed and advertised for industry feedback in Q2 of 2025.
- A potential collaborative delivery contract may be advertised by the end of 2025 (pending Delivery Plan approval) based on defining what is going to be built and where.
- Additional details on the MDCSO Program progress will be provided at the March 2025 WTD Open House.



*Engineering Report to Ecology: Consent Decree milestone is in December 2026.

PROCUREMENT

Strategy and Requirements



WTD Capital Delivery

FACILITY PROGRAMS

Do Business With King County

E-Procurement Supplier Portal Registration

Register as a Supplier

Register today to start responding to King County solicitations.

- Registration is required.
- User guides & video tutorials available.
- Contact us with your questions.



Attend an Orientation

Register to a free online session to learn how to do business with King County.

2024 & 2025 sessions are available for registration!



WTD Capital Delivery

FACILITY PROGRAMS

A screenshot of the King County E-Procurement Supplier Portal registration page. The page has a blue header with the King County logo and a navigation bar with seven steps: 1. Company Details, 2. Contacts, 3. Addresses, 4. Business Classifications, 5. NAICS Codes, 6. Rosters and Certifications, and 7. Review. The current step is 1. The page title is "Register Supplier: Company Details". Below the title is a red instruction: "Please complete all required fields. Select 'Next' or 'Save for Later' after entering your contact information." The form contains several fields: "Supplier/Company Name" (text input), "Tax Organization Type" (dropdown menu), "Supplier Type" (dropdown menu), "Corporate Web Site" (text input), "Tax Country" (dropdown menu), and "Taxpayer ID" (text input). A yellow banner at the bottom of the form says: "* Required: attach a completed IRS W-9 form None +". Below the banner is a link "Attach the required documents." The section "Your Contact Information" is below the banner, with the instruction "Enter the contact information for this registration. This contact will be assigned as the default Admin and Bidder for the Supplier." The form contains four fields: "First Name" (text input), "Last Name" (text input), "Email" (text input), and "Confirm Email" (text input).

Procurement & Payables

(206) 263-9400



procurement.web@kingcounty.gov

Upcoming Capital Projects

Start planning ahead...

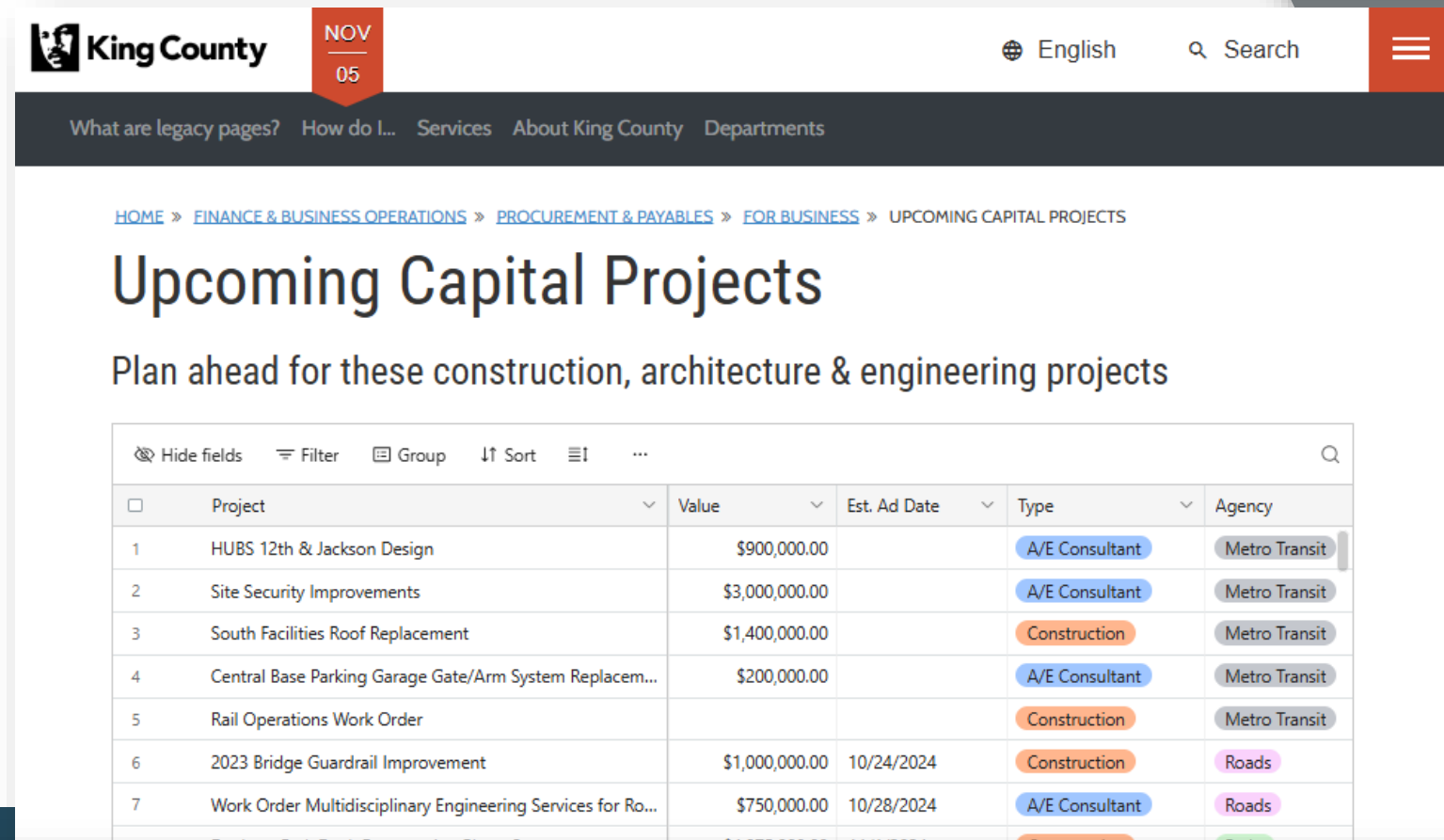
- Contact the King County project manager.
- Get pre-planning details.
- Start forming project teams.



Procurement & Payables

(206) 263-9400

 procurement.web@kingcounty.gov



The screenshot shows the King County website's "Upcoming Capital Projects" page. The header includes the King County logo, a date badge for "NOV 05", and links for "English", "Search", and a menu. A navigation bar lists "What are legacy pages?", "How do I...", "Services", "About King County", and "Departments". The breadcrumb trail reads: "HOME » FINANCE & BUSINESS OPERATIONS » PROCUREMENT & PAYABLES » FOR BUSINESS » UPCOMING CAPITAL PROJECTS". The main heading is "Upcoming Capital Projects" with the subtitle "Plan ahead for these construction, architecture & engineering projects". Below this is a table with columns for "Project", "Value", "Est. Ad Date", "Type", and "Agency". The table lists seven projects, including "HUBS 12th & Jackson Design", "Site Security Improvements", "South Facilities Roof Replacement", "Central Base Parking Garage Gate/Arm System Replacem...", "Rail Operations Work Order", "2023 Bridge Guardrail Improvement", and "Work Order Multidisciplinary Engineering Services for Ro...".

	Project	Value	Est. Ad Date	Type	Agency
<input type="checkbox"/>	Project				
1	HUBS 12th & Jackson Design	\$900,000.00		A/E Consultant	Metro Transit
2	Site Security Improvements	\$3,000,000.00		A/E Consultant	Metro Transit
3	South Facilities Roof Replacement	\$1,400,000.00		Construction	Metro Transit
4	Central Base Parking Garage Gate/Arm System Replacem...	\$200,000.00		A/E Consultant	Metro Transit
5	Rail Operations Work Order			Construction	Metro Transit
6	2023 Bridge Guardrail Improvement	\$1,000,000.00	10/24/2024	Construction	Roads
7	Work Order Multidisciplinary Engineering Services for Ro...	\$750,000.00	10/28/2024	A/E Consultant	Roads

2024-2027 | **150+ projects worth \$1.9+ billion**

Solicitation Abstracts

All communication must be through the Contract Specialist

King County

Solicitation Abstracts

Welcome to King County E-Procurement Portal

This page displays solicitations for King County. Clicking on the "Details" of a solicitation below will display a summary of the solicitation.

Suppliers must register with King County as an **E-Procurement Supplier** to gain full access in the supplier portal to download attachments and submit a response to any solicitation. Information on registering with King County as an E-Procurement Supplier, as well as resources to assist with navigating the supplier portal, can be found by following the link below:

<https://kingcounty.gov/procurement/registration>

After registration, the link to the E-Procurement Sign-in page is below:

<https://kingcounty.gov/procurement/supplierportal>

Information such as a list of suppliers that have expressed interest in solicitations, suppliers that have attended pre-bid or pre-proposal meetings, or submittals received by King County on past procurements can be found on the Solicitation Resources Page:

<https://kingcounty.gov/depts/finance-business-operations/procurement/for-business/solicitation-resources.aspx>

Search Title

View

Solicitation	Title	Solicitation Type	Status	Posting Date	Open Date	Close Date	Details
KC000021.3	Engineering Services for Cedar Hills Regional Landfill Area 9	A&E Solicitation	Active	1/19/21 02:52:0...	12/18/20 01:26:...	1/21/21 12:00:5...	
KC000073	RFP EcoConsumer Outreach and Waste Prevention Program	G&S Solicitation	Active	1/15/21 05:20:1...	1/15/21 05:20:1...	2/9/21 02:00:59...	

Abstract: G&S Solicitation KC000073

Title RFP EcoConsumer Outreach and Waste Prevention Program
Solicitation Type G&S Solicitation
Status Active
Buyer Michelle Poste
Email Michelle.Poste@kingcounty.gov
Synopsis To assist King County Solid Waste Division (SWD) in developing and operating its EcoConsumer Outreach and Waste Prevention Program (EcoConsumer)

Open Date 1/15/21 05:20:11 PM
Close Date 2/9/21 02:00:59 PM
Posting Date 1/15/21

Additional Information

Pre-Bid/Proposal Conference Date
Second Pre-Bid/Proposal Conference Date
Pre-Bid/Proposal Location No Pre-Proposal conference
Last Date for Questions 2/2/21 05:00:00 PM

Bid Opening Location N/A
Small Business Requirements Apply? No
Department
Division

- View publicly advertised solicitations on the [Solicitation Abstracts](#) page and create a response by logging in to E-Procurement.
- High-level details on the solicitation provided:
 - Solicitation Number, Title, Status, Open & Close Dates, along with the solicitation documents

Conflict of Interest

Actual Conflict of Interest – When an individual's judgement, integrity, or decision making has been compromised and involves a tangible benefit.

Perceived or Apparent Conflict of Interest – When an individual's judgement, integrity, or decision making could appear to be influenced, biased, or compromised.

For more information, please visit our website:

<https://kingcounty.gov/legacy/depts/finance-business-operations/procurement/for-business/do-business.aspx>

BUSINESS DEVELOPMENT & CONTRACT COMPLIANCE

Equity in Contracting



WTD Capital Delivery

FACILITY PROGRAMS

Equity & Social Justice (ESJ) Goals

- Diverse business goals are funding dependent (MBE, WBE, MWBE, DBE, SBE, VOB, etc.)
- Must be certified by the Office of Minority and Women's Business Enterprises (<https://omwbe.wa.gov/>)
- Focus on Outreach, Mentorship and Advancing ESJ
- Dedicated ESJ Coordinator
- Workforce Development Goals

For more information visit kingcounty.gov/bdccc



WTD Capital Delivery

FACILITY PROGRAMS

King County Tabor 100 Office Hours

King County staff from the Business Development and Contract Compliance Office are onsite and available at the [Tabor 100 Hub](#) during the following times to offer personalized consultations and information on resources and tools to assist business owners who have an interest in doing business with King County:

- Mondays & Wednesdays: 10:00 AM – 1:00 PM



For appointment scheduling, business owners may visit [King County Tabor 100 Office Hours](#) to schedule a 30-minute appointment.

Note: There are no office hours in December. Office hours will resume in January.

Master Community Workforce Agreement (MCWA)

- Pre-Hire Collective Bargaining Agreement (CBA) between King County and the construction Labor Unions
- Covers all County covered projects \$5 million and over
- Community Workforce Agreement with Priority Hire and Preferred Entry requirements
- Sets basic terms and conditions of employment on covered public works construction projects

For more information visit: kingcounty.gov/priorityhire



WTD Capital Delivery

FACILITY PROGRAMS

Priority Hire Program

- Workforce and Economic Development Strategy:
Addresses construction workforce shortage, diversifying the construction workforce, providing access to opportunities to disadvantage communities and furthers the County's Equity and Social Justice Strategic Plan
- Prioritizes individuals living in economically distressed areas (Priority Hire ZIP codes) of King County
- Provisions in Priority Hire Ordinance (18672) and as outlined in K.C.C. 12.18A, and the Contract Specifications that includes the MCWA

For more information visit: kingcounty.gov/priorityhire



WTD Capital Delivery

FACILITY PROGRAMS

Q&A

Please submit questions in the chat



WTD Capital Delivery

FACILITY PROGRAMS

WTD Staff Contact Info:

For project inquiries:

Jeni Bonenfant

WTD Project Control Supervisor

Email: Jeni.Bonenfant@kingcounty.gov

Website: [WTD Upcoming Contract Opportunities](#)



Thanks For Attending

Check our website regularly for
updates on upcoming events
and opportunities:

[WTD Upcoming Contract
Opportunities](#)



WTD Capital Delivery

FACILITY PROGRAMS