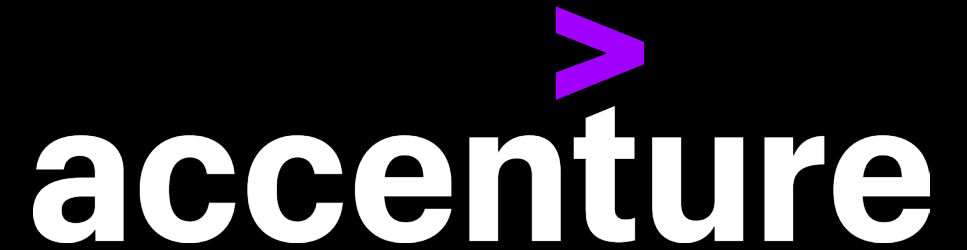


King County Contractor Outreach and Networking Event

Contractor and Consultant Company Information

Accenture

Infrastructure & Capital Projects



Our Service Offering:

- Portfolio Strategy & Management
- Project Development
- Project Execution
- Construction Management
- Operations Development & Readiness
- Strategy & Operating Model Transformation
- Digital and AI Enablement



Contact Us:

Nick Conte, Senior Director

+1 (206) 949-4353 | nicholas.conte@accenture.com

<https://www.accenture.com/us-en/services/infrastructure-capital-projects>



Designing
Connected
Communities

King County's Contractor Outreach & Networking Event

04.21.2025

David R Burnett

davidb@access-arch.com

360.326.1227

www.access-arch.com



Founded in 2018, Access Architecture is a values-driven, carbon-neutral, MWESB-certified, full-service architectural and planning firm.

We provide professional services ranging from feasibility studies and funding packages to construction contract administration and post-occupancy evaluations. We thrive by collaborating with clients whose values we believe in and with whom we can co-create a shared vision.





What We Do:

- Organizational Development (Design & Culture); Management & Business Analysis; Organizational Change Management (Prosci); Lean Six Sigma (DMAIC) Process Re-engineering; IT Professional Services (PM); IT Development; IT Infrastructure & Security; IT Risk Mitigation; Emerging Technology; Enterprise Platforms; Strategic Managed Services; Equity, Diversity, & Inclusion, & Belonging (EDIB).
- Business Intelligence Management Solutions; Business and Technology Transformation; Sustainability; Data Analytics; Strategic Financial Planning and Analysis Management Reporting (FP&A) Solutions; Workforce Planning.
- We are built around integrated core capabilities – people, process, and technology and strategy and industry expertise – the key capabilities needed to help our clients tackle their most complex problems.

506 2nd Avenue, Suite 1400, Seattle Area, WA 98104

Phone: 206-817-9775, Fax: 253-517-9080

Email: andrew@adekoyabc.com

Website: www.adekoyabc.com



SERVICE OFFERINGS



Architecture & Design



Construction Management



Engineering



Environmental Services



Program Management



View all services



ALICIA PAJARES

206-438-2700

alicia.pajares@aecom.com



ENR 2024 Rankings

1 Water 1 Transportation 1 General Building 2 Wastewater Treatment

Service Offerings

Signage

Logos

Illustrations

Iconography

Infographics

Branding

Strategic Messaging

Newsletters

Layout

Templates

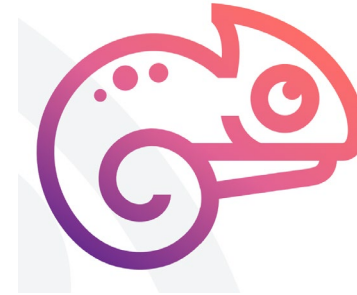
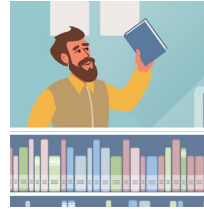
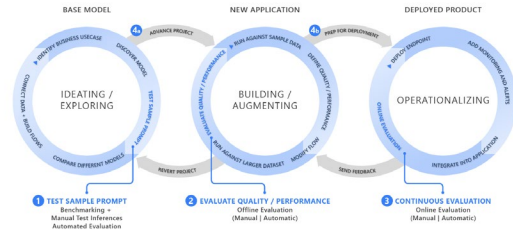
Presentations

Animation

Storytelling

Print Design

ENTERPRISE GENAIOPS LIFECYCLE



Allovus Studios
Collaborate. Design. Deliver.

Aimee Hayes

VP of Creative Services

aimeeh@allovus.com

253.228.4029

Allovus.com



Scan me!



Our markets and services

Our broad expertise allows us to offer an extensive range of services valued by global markets.

Markets

Energy	Property
Water	Healthcare
Resources	Science
Rail	Industry
Highways, Roads & Streets	Technology
Aviation	Cities

Disciplines

Acoustics, Audio Visual, Theatre, Experience Design, Experiential Environments	Facades	Risk and Resilience
Architecture	Fire	Security
BIM	Geotechnical and Tunneling	Seismic and CFD
Bridges, Civil Structures	ITC	Structural
Civil	Lighting	Transport, Logistics, Urban Planning
Electrical Energy	Mechanical, Plumbing, Commissioning, Tunnel Ventilation	
Engineering, Power Systems	Program Management	

Services

Planning
Design
Advisory
Technical Specialist
Climate & Sustainability
Digital

ARUP

1946

Founded by Sir Ove Arup

18,000+

People globally

95

Offices

34

Countries

17

Offices in the Americas

2,000+

People in the Americas

\$2.2bn

Revenue

**Revenue for 2022/2023 financial year*

Contact:

Ryan Nordvik, PE
ryan.nordvik@arup.com
+1 415 946 0282

www.arup.com

BAYLEY



www.bayley.net

Bayley Construction Services:

- Commercial Construction
- Preconstruction
- Design-Build
- Tenant Improvement



Meriann Talbert

DEI Advisor



meriann.talbert@bayley.net



(206) 621-8884



8005 SE 28th Street
Mercer Island, Washington

Bolima Drafting & Design, Inc.

Service Offerings

- **Drafting and support services**
 - Civil 3D, Revit
 - MicroStation, OpenRoads
- **CADD and BIM management**
- **Modeling**

(During all project phases from preliminary engineering to as-built completion)

BOLIMA

Contact:

William Bolima

206.605.0524

wbolima@bolima.com

www.bolima.com

Engineers, Scientists, Consultants, Constructors

Serving Clients Locally and Globally

Wastewater Treatment
Solids/Energy
Drinking Water
Reuse
Wet Weather
Conveyance Infrastructure
Water Resources

Utility Performance
Site Investigation, Remediation
and Solid Waste
Compliance Permitting
Industrial Water
Integrated Project Delivery
Emerging Specialties



Brown AND
Caldwell

PDXMarketing@brwnncald.com | T 206.624.0100

Employee Owned | BrownandCaldwell.com



WATER

Our focus. Our business. Our passion.

For more than 90 years, we have helped millions of people lead better lives through the availability of clean water.

For more information, please contact Emily Fuller at efuller@carollo.com | 208-327-2652 | carollo.com



Service Offerings

- Asset management.
- Climate change and resilience.
- Collaborative project delivery.
- Construction services.
- **Conveyance and distribution.**
- Drinking water.
- Electrical and programming services.
- Operations services.
- **Planning.**
- Private sector services.
- **Program management.**
- Renewable energy.
- Research and development.
- **Resilience and sustainability.**
- **Wastewater.**
- Water resources.
- **Water reuse.**

CHAMELEON TECHNOLOGIES

Chameleon Technologies is a woman-owned staffing and professional services firm.



Michael Dodd
(425) 503-1661 /
Michael@chameleontechinc.com
www.chameleontechinc.com

Champ's Security Service LLC

Security Services Offered

- Private Security
- Events
- HOA's
- Venue's
- And more



Contact

Mica Champagne (Owner)
(706) 315-8984

(email) champsecureservice@gmail.com

(website) <https://champs-security.squarespace.com>



Contact: Nick Buckner

Nick.Buckner@clearwaterservices.com

206-678-6489

A fluid approach to water treatment.

- System Design/ Build & Rental Equipment
- Permitting & Regulatory Assistance
- Operations & Maintenance
- 24/7 Water Quality Monitoring & Reporting

clearwaterservices.com

***CODE 3* SAFETY & TRAINING**

On-Site Client service offerings from Career Fire Officers & EMTs' include:

- Hazmat
 - Hazwoper 8, 24 and 40-Hour certification
 - Hazmat Incident Command
 - Hazmat PPE Selection
 - Hazmat Air Monitoring Basic & Advanced
- Fire Safety
 - Incipient Fire Extinguisher
 - Advanced Fire Systems Operations
 - Basic and Advanced Hose Handling and Tactics
- CPR-AED | Bloodborne Pathogens | First Aid
 - Certification Courses (HSI)



DEREK STABELL

360.281.6428

TRAINING@CODE3SAFETY.COM

CODE3SAFETY.COM



➤ **\$40B +**
in Construction.

➤ **43**
Cities,
Counties,
Utilities &
Transportation
Agencies.

➤ **200+**
Projects.

600 Stewart Street
Suite 400
Seattle, WA 98101
(206) 905-6154
www.cmtsllc.com



Owner's Rep, Project & Program Management

- Program development.
- Pre-bid & procurement services.
- Cost controls.
- Safety compliance.
- Community & stakeholder engagement.



Quality Management Services

- Facilities & building inspection.
- MEP QC coordination.
- Asphalt paving, concrete structures, bridges, deep foundations, MOT & erosion control.
- Site visits & safety walk-throughs.



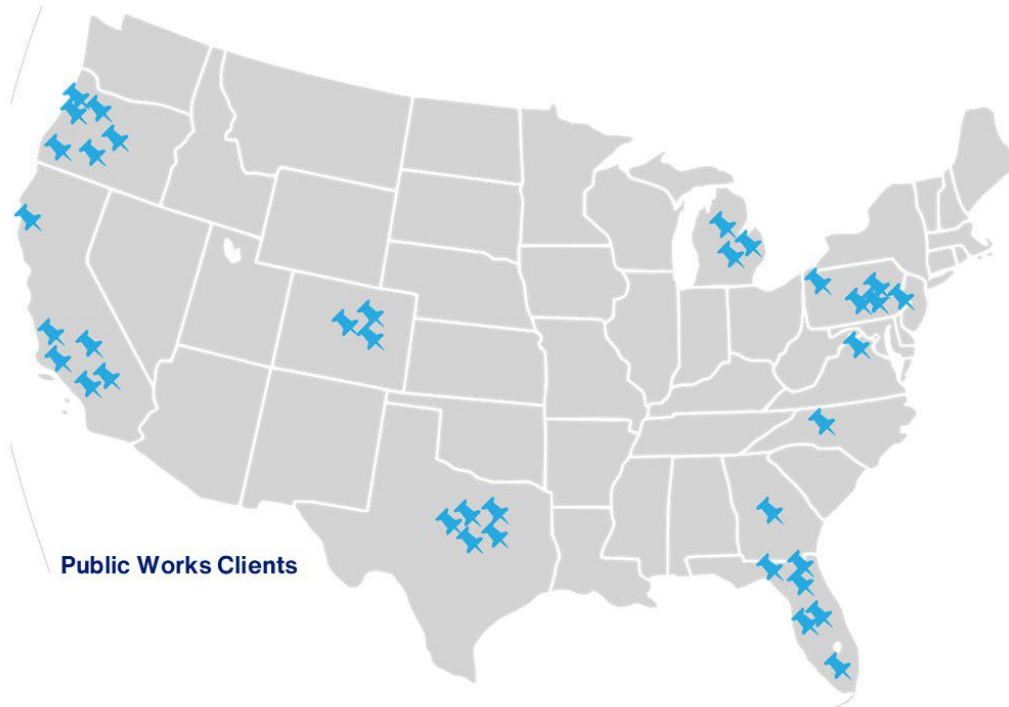
Staff Augmentation

- Certified payroll coordination.
- Document controls & administrative services.
- Scheduling & schedule monitoring.
- Project controls.
- Project/office engineer support.



Disaster & Emergency Services

- Debris management services.
- Facility assessments.
- Hurricane & flood management.
- FEMA public assistance support.
- Quick-response repair & recovery.
- Grant & insurance consultation.



Public Works Clients

ABOUT US

Established in 1984, CMTS provides program, project, and construction management, quality management and inspection, owner's representative, and emergency management services. Our core markets include aviation, public works, infrastructure, water/wastewater, transportation, transit, healthcare, education, arts, and sports & recreational facilities. We have grown to more than 100 employees in offices and projects across 12 states and the US Virgin Islands. CMTS is OWMBE certified as an MBE and DBE, and nationally certified as a VOSB.





CRISTAL BARRAGÁN

SPANISH INTERPRETATION AND TRANSLATION SERVICES

Contact Information:

Cristal Barragán
(509) 396-8028
cristalbarragan@gmail.com

Service Offerings:

- Spanish Interpretation and Translation Services
- In-person and virtual

Expertise

Industrial Design Innovative and functional solutions that blend engineering and market needs.

Transportation Design Vehicles, interiors, and solutions for Aviation, Marine, and Ground Transportation.

Research and Differentiation User needs, market trends, and industry regulations.

Passenger Experience Memorable and comfortable journeys through thoughtful design and attention to detail.

Sustainability Incorporating sustainable practices and materials into solutions to minimize environmental impact.

Accessibility Ensuring transportation systems, vehicles, and related infrastructure are fully accessible to individuals with diverse physical, sensory, and cognitive needs.

Visual Communication Transforming complex ideas into visual elements that resonate with audiences.



Certified WBE



Small Business



King County

Certified SCS

POC: Konstantin Ziman

Email: kziman@d2bridge.com

Phone: (425) 540 9901

Website: www.d2bridge.com

Scope of Work
Statement



DCW Cost & Construction Management

Cost Estimating

- Milestone cost estimating
- Soft cost development
- Contractor reconciliations
- Schedule review and commentary
- Contract evaluations and recommendations

Project Management

- On-site representation/construction observation
- Change order negotiation
- Document management & reporting
- Constructability/risk assessment



WBE / WOSB / SCS

Contact Information:

Kim Kaul, kim@dcwcost.com

www.dcwcost.com

David Evans and Associates, Inc.



**DAVID EVANS
AND ASSOCIATES INC.**

SERVICE OFFERINGS

- **Transportation**

- Bridges and Structures
- Roads and Highways
- Transit and Railroad
- Smart Mobility
- Construction Engineering

- **Energy**

- Development
- Substation
- Transmission

- **Water and Environment**

- Environmental Planning and Compliance
- Water Resources
- Water / Wastewater Infrastructure

- **Surveying and Geomatics**

- Conventional Land Surveying
- Laser Scanning and Mapping
- Subsurface Utility Locations and Mapping
- CIM / BIM
- sUAS
- GIS

- **Land Development**

- **Marine Services**

Contact Information

Mo Sheikhezadeh, Construction Engineering Services Manager

P: 360.628.5040 E: mxsh@deainc.com

Website: deainc.com



**Sustainability | Carbon | Energy
Mechanical | Electrical | Plumbing
Lighting | Commissioning**

Delta E is an integrative consulting firm specializing in MEP engineering, Lighting Design, Energy, Sustainability, and Commissioning.

Contact Info: Marketing@DeltaEConsulting.com
Website: www.DeltaEConsulting.com



Delta E is a **women-owned firm** and are certified with WBE and SBE certifications.

King County Presentation Schedule

Presentations will take place in the White River Conference Room.

10:00 - 10:10am	King County Introductions/Announcements
10:10 - 10:15am	Executive Climate Office – Brian Doyle
10:15 - 10:30am	Facilities Management Division (FMD) - Harborview Bond – Melvin Givens III
10:30 - 11:00am	Roads Services Division – John Rescober
11:00 - 11:30am	Metro – Jen Mayer
11:30 - 11:45am	Solid Waste Division (SWD) – Jesse Gonzalez
11:45am - 12:00pm	Parks – Jason Rich
12:00 - 12:30pm	BREAK
12:30 - 1:00pm	Water and Land Resources Division (WLRD) – Chase Barton
1:00 - 2:00pm	Wastewater Treatment Division (WTD) – Chad Merrill

Event Guide:



King County

Event Schedule

8:30am	Attendee check-in begins
9:00am	Welcome and Keynote Address
9:30am – 2:00pm	Networking & Resource Row Medicine Creek Conference Room/Foyer
10:00am – 2:00pm	King County Project Presentations White River Conference Room
10:00am – 2:00pm	1:1 Contractor Networking Meetings Green River Conference Room

Event Guide:



King County

DELVE underground

Lynn Salvati, PE, Principal Engineer
salvati@delveunderground.com
206.588.8150

delveunderground.com

- Tunnels & Underground Engineering
- Trenchless Engineering
- Tunnel Inspection & Rehabilitation
- Engineering Consulting
- Advisory Consulting
- Construction Management
- Construction Claims Services

Dirt Road, LLC

Traffic Control and Excavation

Excavation Services

- Site preparation and land clearing
- Grading, earthmoving, and hauling
- Trenching for utilities and pipelines
- Stormwater and drainage solutions
- Roadway and driveway construction
- Foundation excavation
- Erosion control and land stabilization

Traffic Control Services

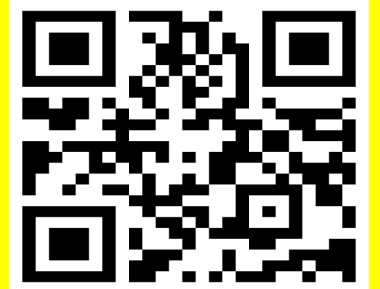
- Certified flagging operations for roadwork and construction zones
- Traffic control plans (TCP) and implementation
- Temporary and permanent road signage installation
- Lane closures, detours, and road diversions
- Pilot car and escort vehicle services
- Work zone safety compliance and risk management
- Emergency traffic control response



Email: Office@dirtyroadllc.net

Ph: (425) 540-0176

www.dirtyroadllc.net



Duck Duck Publishing + Productions

Our Service Offerings:

- Communications and Media Services
- Management Services
- Translation Services
- Clothing
- Toys and Games
- Book and Papers
- Printing and Productions
- Mailing Products

✓ Registered with Washington's Electronic Business Solution (WEBS)



Contact: Serena Li | Founder
serena@duckduckbooks.com

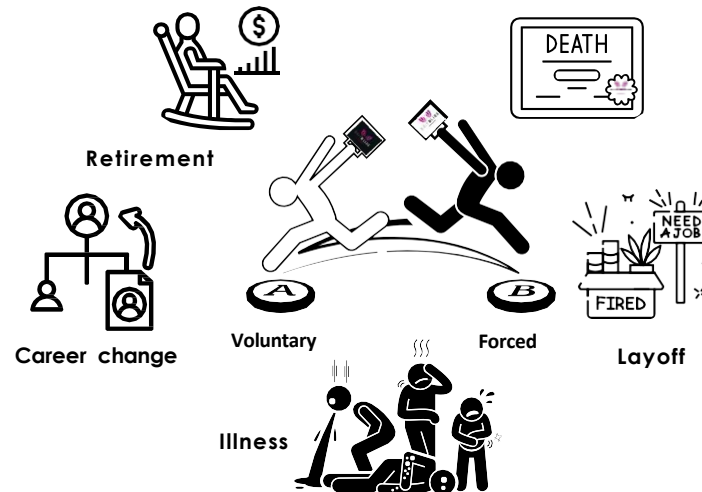
duckduckbooks.com/productions

Service Offerings



Helping Businesses with Transition Planning.

Let's have a Conversation!



Contact Information



Gloria Coleman



Phone Number

424-446-0677



E-Mail Address

gloria@exitbliss.com



Website

www.exitbliss.com



Market Segments:

- ▶ Aviation
- ▶ Bridges
- ▶ Dams
- ▶ Highways
- ▶ Large projects
- ▶ Marine
- ▶ Rail
- ▶ Resiliency
- ▶ Tunneling
- ▶ Water

Contact:

WAbids@FDcorp.com

Built on a foundation of excellence, **FlatironDragados** operates in the United States and Canada through **FlatironDragados** USA and **FlatironDragados** Canada. We are client-focused and committed to building stronger, more resilient communities.

As part of the ACS Group, one of the world's leading infrastructure companies, **FlatironDragados** provides clients the accessibility and support of a local firm along with the stability and resources of a multi-national organization.

FlatironDragados is the trusted partner delivering resilient, innovative and sustainable infrastructure for today and tomorrow. In collaboration with public and private clients, our project teams deliver essential infrastructure — roads and bridges, aviation, resiliency protection, dams and reservoirs, rail and transit, water and wastewater treatment facilities, tunneling, underground projects and marine works.



Flux Resources

With roots in the engineering industry, Flux provixsz high-caliber professionals in Architecture & Engineering, Information Technology, and Business Professionals. Our team delivers contract staff and direct hire placements with every level of government, as well as corporation and private clients.

Roles we place include but are not limited to:

Civil Engineers
Controls Engineers
Electrical Engineers
Electrical Technicians
Engineering Support
Geotechnical Engineers
Mechanical Engineers
Structural Engineers
Survey Technicians
Chemical Engineers
Architects
Designers/Drafters
BIM Technical Specialists
Landscape Architects
Land Surveyors
Survey Technicians

Assessors Inspectors
Project Managers
Project Leads
SSHO
QA/QC
Superintendents
Analysts
Archaeologists
Biologists
Environmental Scientists
Geographers
Geologists
Forestry Technicians
Hydrologists
Project Managers
And many more!



Julie Miller, Business Development Manager

julie.miller@workwithflux.com

253-686-4560

www.workwithflux.com

FORMA CONSTRUCTION

OUR SECTORS

K12

HIGHER ED

PUBLIC
WORKS

COMMERCIAL

OUR DELIVERY METHODS

JOB ORDER
CONTRACTING

DESIGN-BUILD

GC/CM

DESIGN-BID-BUILD



FORMA

CONSTRUCTION

TELL US
ABOUT YOUR
BUSINESS! >>



OLYMPIA // SEATTLE // BELLINGHAM

206.626.0256 // INFO@FORMACC.COM

WWW.FORMACC.COM



- MEP Engineering
- Sustainable Design
- LEED, ILFI Design & Support
- Clean Buildings Compliance, Energy Audits
- 300+ King County Projects
- Certified SCS & SBE



King County AFIS Lab, LEED Gold

FSi Engineers
206.622.3321
FSi-engineers.com



FURTADO

Services

- Land surveying
- GIS mapping
- Drone photogrammetry
- Construction management
- Civil engineering
- 3D LiDAR scanning

Contact

Joshua Cheatham, PE

206.621.1218

admin@furtadoassociates.com

furtadoassociates.com

Market Sectors + Delivery Methods

Market Sectors

- Office / Mixed Use
- Life Sciences
- Senior Living
- Education
- Healthcare
- Community / Non-Profit

Delivery Methods

- Design-Build
- GMP
- Service Work
- GC/CM
- Job Order Contracting
- Stipulated Sum / Lump Sum



The most innovative companies in the world call the Pacific Northwest home. We're proud to work with the region's market leaders to build the sustainable, future-ready spaces that fuel their growth.



www.gly.com



425.451.8877



info@gly.com



Info for our
Partners on
the Jobsite

Miss the opportunity
to share your
business
information?

You still can!

If you are interested in providing a promotional slide, please send us **one (1) single slide per firm (in PowerPoint format)** that includes your:

- Company name
- Business logo
- Service offerings
- Contact information and
- Website address

We will add it to the business slides from today and post it with the event resources.

Email: Diane Navarro,
dinavarro@kingcounty.gov

Deadline: Friday, April 25



*Increase your
business network*

GM Homes


Service Offerings

- **Project Management** – End-to-end project oversight, scheduling, budgeting, and stakeholder management.
- **Construction Management** – On-site supervision, quality control, and contract administration.
- **Pre-Construction Services** – Feasibility studies, permitting, design coordination, and estimating.
- **Business Consulting** – Strategic planning, procurement management, and operational optimization.
- **General Consulting Services** – Tailored solutions for construction and infrastructure projects and software implementation.



Maninder Singh

 maninder@gmhomesusa.com

 +1 (206) 304-3189(Mobile)

 +1 (469) 677-7744(Office)

 www.gmhomesusa.com

GRAHAM CONSTRUCTION INC.

SERVICE OFFERINGS



TRANSPORTATION



COMMUTER RAIL



WATER &
WASTEWATER



BUILDINGS

CONTACT US

STEPHEN CONNOLLY

stephen.connolly@grahamus.com

425-324-0334



grahambuilds.com



GRAHAM



OUR PUGET SOUND CAPABILITIES:

- Highways & Roads
- Pavement Preservation
- Bridges
- Sitework & Utilities
- Light Rail
- Heavy Rail
- Refinery Infrastructure
- Substation Sites
- Solar Panel Generation
- Bus Rapid Transit

CONTACT US!

Bo Smith, Project Executive
E: bo.smith@gcinc.com
T: (425) 508-0544

GRAVITEC

SYSTEMS INC.™

ENGINEERING | TRAINING | EQUIPMENT | TESTING

Amanda Johnson

206.780.2898

johnson@gravitec.com

www.gravitec.com



King | Snohomish | Pierce

- Portable Toilets
- Womens Toilets - with pads and lock
- Trailer-Mounted Toilets
- Elevator and Crane Toilets
- Hand Washing Stations
- Luxury Trailer Toilets



Emma Goering

Info@gogreenlatrine.com

206-397-0336

<https://gogreenlatrine.com/>



Greenprint Partners



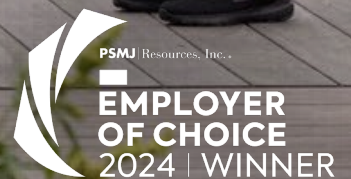
Greenprint Partners (S/W/MBE, B Corp) is an award-winning consulting firm specializing in community-centered environmental infrastructure.

SERVICES

- Civil Engineering
- Landscape Architecture
- Planning + Engagement
- Program Management

CONTACT

Tiffany Sevilla, PE
tsevilla@greenprintpartners.com
greenprintpartners.com





Schedule a consultation with us!

Small business consulting firm offering:

- **1:1 technical support** and **resource navigation services** for small businesses in English/Spanish.
- Small group **trainings** and **workshops** for entrepreneurs and small business owners.
- Economic Empowerment **Project Management** for non-profits and local government agencies.

Visit www.growingcontigo.com for more information.





About HDR



108

Years in Business



200+

Global Offices



13K+

Employees

Contact Us

wamktg@hdrinc.com

425.450.6200

hdrinc.com



West Duwamish CSO



South Seattle Recycling and Transfer Station



Lower Russell Road Levee Setback

Our Markets

- Water
- Transportation
- Solid Waste
- Building Engineering
- Architecture

Our Services

- Engineering
- Planning and Consulting
- Program Management
- Environmental Services
- Asset Management
- Real Estate/Right-of-Way
- Architecture
- Commissioning and Operations
- Economics and Finance
- Sustainability and Resiliency
- Coastal Engineering and Restoration



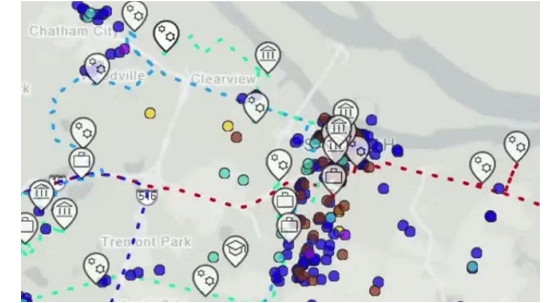
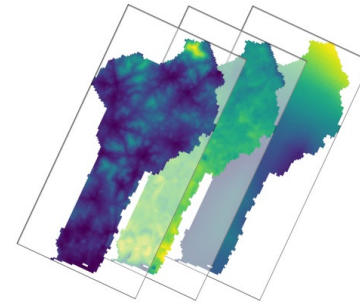
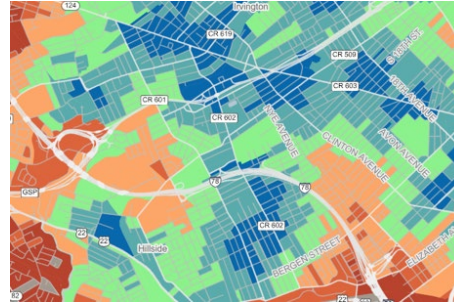
Henry Spatial Analysis

Services

- GIS Mapping
- Spatial Studies
- Data Analysis
- Custom Software
- GIS Trainings

NAICS Codes:

541370, 541690, 541720



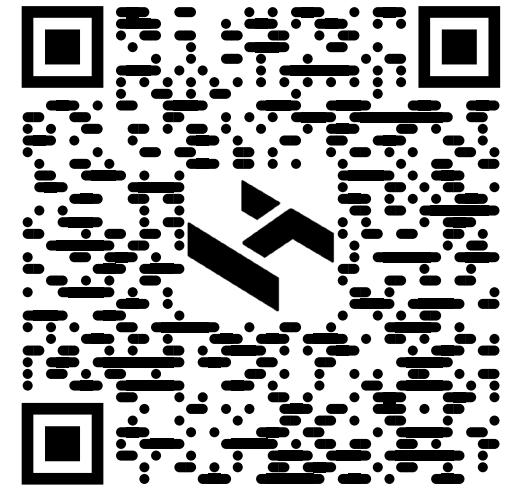
Contact

Nathaniel Henry, PhD

nat@henryspatialanalysis.com

(341) 226-6277

www.henryspatialanalysis.com



OMWBE-Certified Small Business Enterprise



HENSEL PHELPS

Plan. Build. Manage.

SERVICE OFFERINGS



Develop, construct and maintain inspired landmarks that turn our clients' aspirations into reality.

CONNECT



Scan here to connect to our database



CONTACT



Jason Jones
Supplier Diversity Manager
206.931.3890
jjones2@henselphelps.com
www.henselphelps.com

King County Presentation Schedule

Presentations will take place in the White River Conference Room.

10:00 - 10:10am	King County Introductions/Announcements
10:10 - 10:15am	Executive Climate Office – Brian Doyle
10:15 - 10:30am	Facilities Management Division (FMD) - Harborview Bond – Melvin Givens III
10:30 - 11:00am	Roads Services Division – John Rescober
11:00 - 11:30am	Metro – Jen Mayer
11:30 - 11:45am	Solid Waste Division (SWD) – Jesse Gonzalez
11:45am - 12:00pm	Parks – Jason Rich
12:00 - 12:30pm	BREAK
12:30 - 1:00pm	Water and Land Resources Division (WLRD) – Chase Barton
1:00 - 2:00pm	Wastewater Treatment Division (WTD) – Chad Merrill

Event Guide:



King County

Event Schedule

8:30am	Attendee check-in begins
9:00am	Welcome and Keynote Address
9:30am – 2:00pm	Networking & Resource Row Medicine Creek Conference Room/Foyer
10:00am – 2:00pm	King County Project Presentations White River Conference Room
10:00am – 2:00pm	1:1 Contractor Networking Meetings Green River Conference Room

Event Guide:



King County

Herrera Environmental Consultants

SERVICES

- Stormwater Design
- Watershed and Floodplain Management
- Sustainable Site Development
- GeoSpatial Science
- Climate Resilience Planning
- Natural Resources and Permitting



GEORGE RITCHOTTE

206.356.0511

gritchotte@herrerainc.com

herrerainc.com



Highlander Six Consulting LLC

Service Offerings

- Safety and Security Assessments
- Emergency Plans and Procedures development
- Incident Command System (ICS) Training/Medical/Emergency Response
- Security Program Development
- Security/Risk Management Consulting



Colonel (Ret) Gregory Allen

253.709.3195, gallen@highlander6.com

www.highlander6.com

Services

- Mechanical system design for commercial buildings
- Existing system review
- Code review
- Equipment selection
- Permit drawings
- 3Dmodelling

Every building is a confluence of creativity and deliberate behind-the-scenes design. At HVAC Double Check, we leverage an engineering mindset to help you build thoughtful, comfortable spaces



Kathi Shoemake, PE
Principal

✉ kathi@hvacdoublecheck.com

☎ 206.880.0102



Tricia Drake, PE, LEED AP
Founder and Principal

✉ tricia@hvacdoublecheck.com

☎ 206.249.6154

www.hvacdoublecheck.com

Ideal Vibration

Service Offerings

- Vibration Analysis for Commissioning Pumps, Motors, and other rotating machinery per King County Specifications.
- Thermography
- Dynamic in-place balancing
- Laser Shaft Alignment per King County Specification
- Vibration Analysis for troubleshooting machine vibration problems.



Contact Information

Patrick Patterson, CMRP, ISO Category III

(206) 795-7158

patrick@ide Alvibration.com

www.idealvibration.com

J Lawrence Industries LLC

J Lawrence Industries is a World Class company located in the Puget Sound area, providing Mechanical Design, Production Tooling, Machine and Equipment Development, Project Management, Manufacturing, Fabrication, and Design for Manufacturing services.

JLI has significant background in Mechanical Design, Fabrication and Manufacturing in the following:

Jigs & Fixtures

Trim Fixtures

Check Fixtures

Transportation Equipment

Access Platform

Test Equipment

Lifting Fixtures

Facilities Process Equipment

J-Lawrence industries

Contact Information

Jeffry Tomson

360-202-7342

Jeffry.tomson@jlawrenceindustries.com

<https://jlawrenceindustries.com/>

Jacobs Engineering Group Inc.

Service Offerings

- Program and Project Management
- Construction Management
- Water and Wastewater Treatment
- Conveyance and Pump Stations
- Civil Engineering
- Geotechnical Engineering
- Environmental Engineering
- Hydraulics and Hydrology Modeling
- Surveying
- Permitting
- Landscape Architecture
- Project controls
- Cost Estimation
- Scheduling
- Communications and Public Outreach
- Cultural Resources
- Diversity, Equity and Inclusion Specialists
- Solid Waste Facility Planning, Design and Operations

Jacobs®

Contact Information

Court Harris/425-453-5000/Court.Harris@jacobs.com

[Jacobs.com](https://www.jacobs.com)

JERICHO FOUNDATION LLC

General Contracting company

**Remodeling-Maintenance-Flooring-New
Construction-Additions/Sunrooms.**

Residential – Commercial

Contact: **Yasmine** (708) 466-2533

Jericho3llc@gmail.com

Jerichofoundationllc.com

Bad design costs you bids. *let's fix that.*

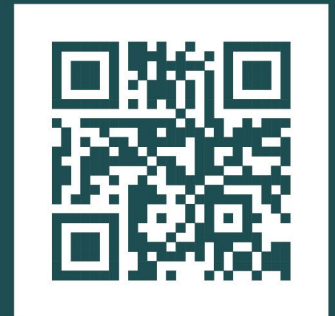
Hey, I'm Jessica. I help businesses look professional and credible—on bids, job sites, and online. Whether it's branding or marketing materials, I'll make sure your business looks as solid as your work.

bid & proposal design
branding
event kits
overflow design work
print & digital design
truck & site signage
vacation / leave coverage



Jessica Clements

Brand Designer | Graphic Designer



Schedule a **free**
consultation at
jessicaclements.net



Construction Management Platform

- Financial Management
- Sources of Funds
- Capital Planning + Forecasting
- Portfolio + Project Analytics
- Document Management
- Asset Management
- Facility Condition Assessments (FCAs)



For more information please contact:

Mike Virgl
mvirgl@kahua.com
(206)580-6971



Construction Management

- Transportation
- Utilities
- Facilities
- Ports

Dana Tavener, Marketing Manager

dtavener@kbacm.com

www.kbacm.com



Contact Information

Emmy Kane, CEO/President | 206-691-0476

ekane@kane-environmental.com

www.kane-environmental.com

End-to-end environmental management services to meet your cleanup goals efficiently.

Service Offerings:

- Environmental Due Dilligence: Phase I and Phase II Environmental Site Assessments
- Hazardous materials surveys (asbestos & lead-Based Paint)
- PFAS investigations & sampling
- Underground storage tank assessments
- Analysis of remediation alternatives/options
- Design and implementation of environmental cleanup plans



Services

Collaborative Solutions

- Mediation, facilitation & conflict resolution
- Community outreach planning & engagement
- Strategic planning
- Stakeholder committees & advisory groups

Strategic Communications

- Policy & issue management
- Digital communications
- Communications planning, messaging & materials

Tribal Relations

- Government-to-Government Communications
- Tribal Relations to consult, involve, and engage sovereign leadership and communities
- Tribal Listening Sessions
- Mediation Among Tribes and Government Entities on Specific Projects
- Cultural Resources Engagement, Studies, Monitoring, Mitigation
- Tribal Partnership & Technical Assistance

Digital Engagement

- Virtual meetings, workshops & events
- Technology-supported & data-driven stakeholder facilitation
- Stakeholder-centered design & product development
- Analysis, illustration & visualization

Equity & Inclusion

- Community-sensitive engagement
- Partnerships with community-based organizations
- Targeted outreach techniques for vulnerable and marginalized populations
- In-language meetings (in-person & virtual)



Sectors



WATER



ENERGY



MARINE



LAND USE &
NATURAL
RESOURCES



COMMUNITY
& REGIONAL
PLANNING



TRANSPORTATION



Service Offerings

- Planning, Design, Construction Management
- Wastewater Treatment
- Biosolids Management
- Energy & Biogas Recovery
- Pipelines & Pump Stations
- Trenchless Technologies
- Condition Assessment & Rehabilitation
- PFAS & Emerging Contaminants
- Collaborative Delivery
- Owner's Advisor Services
- Program Management
- Utility/Asset Management
- Remediation



kennedyjenks.com



Chris Baersten, PE, PMP, ENV-SP

Direct: (206) 753-3412

ChrisBaersten@kennedyjenks.com



KIEWIT IS A PRIME CONTRACTOR
SPECIALIZING IN LARGE INFRASTRUCTURE
PROJECTS IN THE PNW AND IS **LOOKING FOR**
MWBE SUBCONTRACTOR PARTNERS FOR:

- Water Treatment Facilities
- Dams & Bridges
- Water & Sewer Conveyance
- Fish Passage Improvements
- Light Rail/Transit Projects
- Naval & Marine Facilities
- Commercial & Industrial Buildings

DENNIS AHL

dennis.ahl@kiewit.com | (253) 943-4070

KIEWIT.COM



ELLIOTT WEST
WET WEATHER
TREATMENT STATION



BUILDING



INDUSTRIAL



MARINE



MINING



OIL, GAS & CHEMICAL



POWER



TRANSPORTATION



WATER

Content creators with passion and cultural understanding

Latino Northwest Communications (LNWC) is a media production company specializing in the Latino community of the Pacific Northwest, with the ability to produce Spanish and English content. LNWC bridges cultural and linguistic gaps to foster understanding and representation.

With almost three decades of experience, LNWC has developed a profound understanding of the challenges affecting immigrants and diverse communities in this region. Nonprofit organizations, corporations, and government agencies have utilized LNWC's expertise to reach the Pacific Northwest Latino population and successfully develop, produce, and implement messages with culturally appropriate content.

OUR SERVICES INCLUDE:

- Documentaries
- Educational Videos
- Corporate Videos
- Promotional Videos
- Special Programs
- Narration & Voiceover in Spanish and English



Contact information:

Mario Zavaleta

206-941-1813

mzavaleta@latinonorthwest.com

www.latinonorthwest.com

www.latinononw.com

LINDSEY CONSULTING, WBE

35 Years of Consulting Experience
Providing:

- Utility Finance & Funding Plans
- Grant & Loan Procurement
- Equitable Rate & Fee Analysis
- Capital Facility Financing Plans
- Revenue Bond Issue Assistance

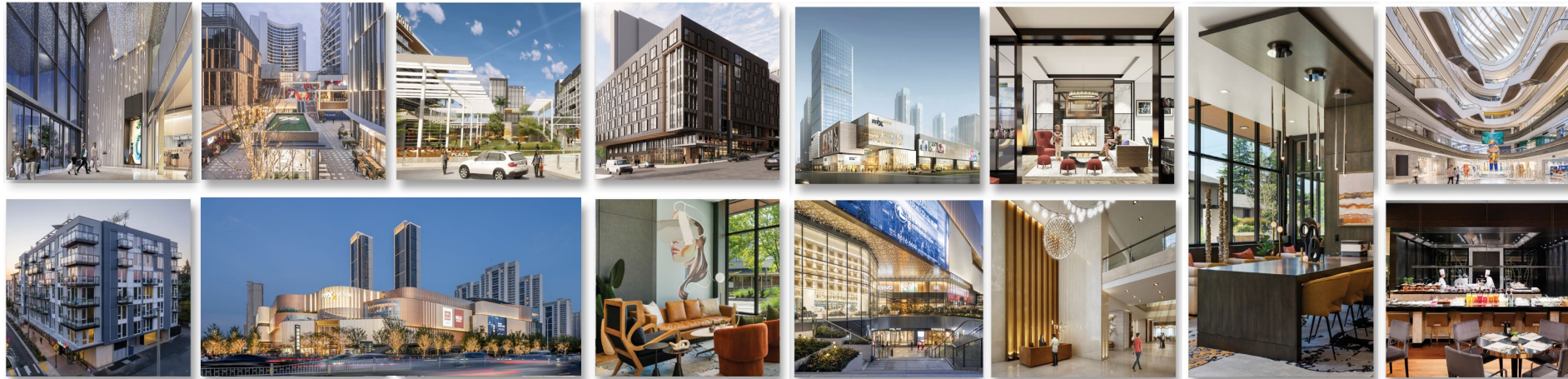


Name: Jane Lindsey, Owner

Telephone: 206-669-5474

Email: lindseyconsulting@msn.com

Website: Lindseyconsult.com



OUR SERVICE

We provide design success.

LINK Design Group is an award winning creative design studio providing **architectural, master planning, and interior design** services for clients around the world. We design inspiring **retail, residential, office, hospitality, and integrated mixed-use developments** that bring value to our clients, the surrounding communities, and the people that use them on a daily basis.

With offices in **Seattle, Shanghai, and Shenzhen**, our global reach and in-depth market knowledge allow us to identify emerging trends and deliver innovative solutions. **Collaboration is at our core**—we facilitate dialogue between clients and peers, ensuring projects benefit from collective expertise.

At LINK, design goes beyond aesthetics. We create places that strengthen neighborhood identity, drive long-term value, and establish meaningful connections between people and place.

CONTACT US

Mike Dutton
info@linkdesigngroup.com
425.298.0080

<https://www.linkdesigngroup.com/>

US 439 Kirkland Way,
Kirkland, WA, 98033

CHINA 602 Pengjiang RD. E 461
Shanghai, 200072
上海市闸北区彭江路602号
E座461室 邮编200072

Service Offerings

- Data & Artificial Intelligence
- Advanced Analytics & LLM
- Power BI & Tableau Reporting
- Sustainability Reporting
- Data Governance
- Business Process Automation
- Change Management
- PDF Remediation
- Statewide #16322 Contract holder



Logic Intelligence®

Connecting the Past, Unlocking the Future®

Small Business, DBE, MBE, & SCS Certified

Contact



Promod Antony



(503) 523 2722



promod.antony@logicintelligence.com



www.logicintelligence.com



We Specialize In

- NEPA (Environmental Assessments)
- Section 404/Section 10
- Section 408
- Categorical Exclusions
- Mitigation and Restoration Projects

Natalie Edwards

Founder/Principal Environmental Scientist

Contact Information:

natalie@mahoganyenvironmental.com

(470) 926-6539

www.mahoganyenvironmental.com

Maul Foster & Alongi.

Service offerings:

- Communications
- Community Engagement
- Planning
- Data Analytics



KATHRYN MURDOCK
***Director of Planning and
Engagement***

kmurdock@maulfoster.com

206.556.2029

King County Presentation Schedule

Presentations will take place in the White River Conference Room.

10:00 - 10:10am	King County Introductions/Announcements
10:10 - 10:15am	Executive Climate Office – Brian Doyle
10:15 - 10:30am	Facilities Management Division (FMD) - Harborview Bond – Melvin Givens III
10:30 - 11:00am	Roads Services Division – John Rescober
11:00 - 11:30am	Metro – Jen Mayer
11:30 - 11:45am	Solid Waste Division (SWD) – Jesse Gonzalez
11:45am - 12:00pm	Parks – Jason Rich
12:00 - 12:30pm	BREAK
12:30 - 1:00pm	Water and Land Resources Division (WLRD) – Chase Barton
1:00 - 2:00pm	Wastewater Treatment Division (WTD) – Chad Merrill

Event Guide:



King County

Event Schedule

8:30am	Attendee check-in begins
9:00am	Welcome and Keynote Address
9:30am – 2:00pm	Networking & Resource Row Medicine Creek Conference Room/Foyer
10:00am – 2:00pm	King County Project Presentations White River Conference Room
10:00am – 2:00pm	1:1 Contractor Networking Meetings Green River Conference Room

Event Guide:



King County

Miss the opportunity
to share your
business
information?

You still can!

If you are interested in providing a promotional slide, please send us **one (1) single slide per firm (in PowerPoint format)** that includes your:

- Company name
- Business logo
- Service offerings
- Contact information and
- Website address

We will add it to the business slides from today and post it with the event resources.

Email: Diane Navarro,
dinavarro@kingcounty.gov

Deadline: Friday, April 25



*Increase your
business network*



CONTACT INFORMATION



ROSS VARIN, PE

971-378-6786

ross.varin@meadhunt.com

www.meadhunt.com

LOCAL SERVICES

- Architectural Design
- Electrical and Process Instrumentation
- Environmental Justice Planning
- Flood Risk Reduction
- GIS
- Hydraulic and Hydrologic Modeling
- Industrial Pretreatment Program Development and Implementation
- Municipal Infrastructure Improvements
- Stormwater Management
- Structural Engineering
- Wastewater Conveyance and Treatment
 - Biogas Upgrading and Usage
 - Odor Control
- Wastewater Reuse
- Water Resources
- Water Supply, Treatment, Storage, and Conveyance

MICHEL'S®

Michels supports the public's desire to move safely and more efficiently, delivering complete projects and individual services to make seamless transportation possible.

- Concrete Paving
- Earth Retention
- Aggregates
- Soldier pile retaining wall
- Secant retaining wall
- Sheet pile retaining wall
- Drilled shafts
- Grouted tiebacks

WE DO THAT ... **& MORE**



/ Michels.us



MLA
ENGINEERING

www.mlaengineering.com

1109 1st Ave, Suite 300
Seattle, WA 98101
206.264.2727

OMWBE-certified SBE and SCS

Structural Engineering Services Offered:

- New building Design
- Existing Building Improvements
- Facility Assessment & Retrofits
- Seismic Assessments and Retrofits
- Water Retaining Structures
- Concrete Repair
- Earth Retention and Deep Foundations
- Value Engineering & Constructability Reviews

Sectors:

- Tunnelling and Underground
- Transit and Urban Mobility
- Transportation
- Water
- Energy

Service offerings:

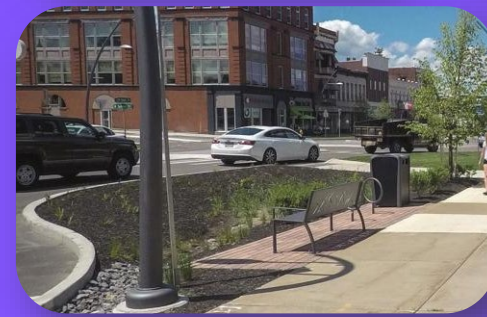
- Engineering & Design
- Program Management
- Project Management
- Construction Management
- Digital Consulting
- Project Controls
- Project Advisory
- Infrastructure Planning
- Asset Management

Contact information:

Ed Boatman | Senior Project Manager
206.261.5503 | ed.boatman@mottmac.com

For more information: mottmac.com

M M
MOTT
MACDONALD





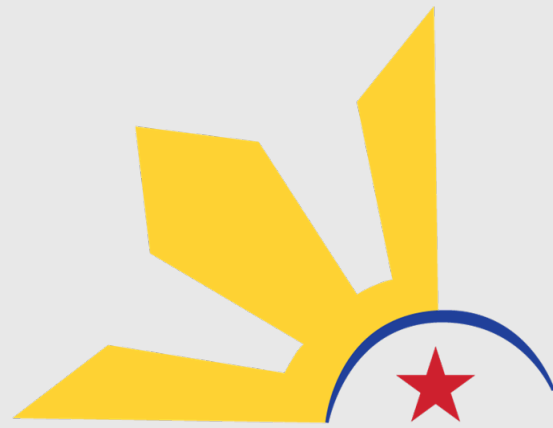
WWW.NECTRSOCIAL.COM

CONTACT

ZAK KOSHER [FOUNDER]
ZAK@NECTRSOCIAL.COM
(425) 213-8619

SERVICES

CONTENT CREATION
SOCIAL MEDIA MANAGEMENT
COMMUNITY MANAGEMENT
PAID ADS
PPC
CONSULTING



NOAH'S TRUCK

Meet Noah's Truck, LLC

Noah's Truck dba NW Delivery, a certified Minority and Women-Owned Business Enterprise (MWBE) specializing in **transport, logistics, and relocation services**.

At our core, we operate by these three principles:



PNW-Based



Networks to Region and Globe



Cares for Community



GRACE PEREZ | Founder

Point of Contact: Grace R. Perez

Title: Managing Director

Email: grace@noahstruck.com

Office phone: (206) 582-9119

Cell phone: (626) 271-0301

Website: www.nw-delivery.com

NSI Engineering



Service Offerings

- Project Management
 - Stakeholder Analysis
 - Collaboration and Team Building
 - Integration Analysis
- Quality Management
- Risk Management
- Configuration management
- Requirements Management/Verification & Validation Support
- Asset Management
- Document Management
- Project Scheduling
- Competency/Training Program development

Sectors

- | | | | |
|----------------|------------------|--------------------------|------------------------|
| • Transit | • Infrastructure | • Healthcare | • Digital Applications |
| • Smart Cities | • Energy | • Information Technology | |

Differentiators

- Highly talented systems-thinking professionals that complement project management team capabilities
- Best-in-class ability to quickly identify, define, and document complex processes across multiple disciplines
- Integrate and right size technology solutions with people-focused processes
- Tailor standard practices to achieve specific and unique project needs
- Continuous improvement mindset focused on knowledge sharing
- Committed to long-term solutions, not short-term fixes

Certifications

DBE, UCP #040829
DBE, OMWBE #D2F0024233
DVBE, DGS #1769699
King County SCS #4363
SBE, DGS #1769699
SBE, LA Metro #6938
WBE, OMWBE #W2F0024233

Contact

(408) 288-8200
info@nsieng.com
www.nsieng.com



Full Service Commercial & Residential Moving

Office & Commercial Relocations – We specialize in moving businesses, from small offices to large industrial facilities, with minimal downtime and maximum efficiency.

Warehouse & Storage Solutions – Offering secure & flexible options for businesses needing short or long-term storage for equipment, inventory, or records.

Specialty Equipment Handling – Expertise in safely transporting delicate, high-value, and bulky commercial equipment, including medical, IT, and manufacturing assets.

Employee Relocations & Residential Moves – Assisting companies with employee moves, ensuring a seamless transition for personnel relocating locally or internationally. Just moving your family down the street? We've got you covered there, too.



David Qualls

Relocation Consultant

(360) 628-2452

davidq@olympicmovers.net



Add me to your contacts



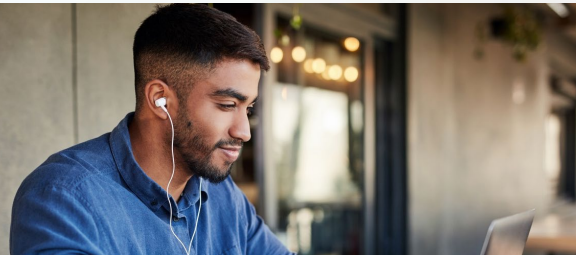
Oxygen is a certified Native American- and woman-owned consulting firm focused on helping people thrive at work.

Since 2008, we've guided organizations through change by improving employee experience and enabling success at every level. Our work fuels aligned, engaged, and future-ready cultures.

Our Services:

1

Sales Enablement



2

Learning & Development



3

People & Organizational
Performance



4

AI Readiness & Adoption



Claire Durrell
VP, Client Development

📞 (425) 765-4556

✉️ cdurrell@oxygenexp.com

🌐 oxygenexp.com



King County Contracts

CPA 654514 – Office Supplies

Piggyback off of WA State DES Contract Number 06019

CPA 6470515 - Green Janitorial Products and Supplies

Piggyback off of WA State DES Contract Number 25723

Authorized Fulfilment Partner on Grainger DES
Industrial Supplies Contract #PA 19922

- Safety Supplies Office Furniture
- Technology Supplies Test Equipment



OMWBE Certified
Woman-Owned Small Business
(WBE) #W2F00244434

OMWBE Certified
Disadvantaged Business Enterprise
(DBE) #D2F0024434

Contact Information

Account Manager:

Daniel Gomez

dgomez@posolutions.com

844-600-4949

Contract Manager:

Julie Valdez

jvaldez@posolutions.com

509 452-1993

<https://www.posolutions.com>

ParametriX

Helping clients deliver resilient infrastructure, livable communities, and environmentally sustainable solutions.

Advisory Services

Community Building

Environmental Planning & Compliance

Transportation

Water



parametrix.com



Planning & Management Services, Inc.

WHAT WE DELIVER

Specialized project management and program controls services:

- Project Management
- Cost Estimating
- Scheduling
- Constructability Reviews
- Cost Management
- Risk Assessments & Stochastic Analysis
- Earned Value Management
- Claims Analysis
- Change Management
- Document Controls & Project Assistance



www.pmsvs.com

Phone: (253) 248-0038 Email: main@pmsvs.com
32001 32nd Ave South, Suite 325, Federal Way, WA 98001



Helping customers succeed. It's what we do.

Pivotal Consulting excels at helping customers increase business performance and profitability. By leveraging our expertise in business-technology strategy, technology modernization, and digital transformation we help our customers develop a sustainable competitive advantage. As an award-winning, nationally certified Minority Business (MBE) and majority women-led firm, we exemplify our diverse and inclusive values.

STRATEGY Portfolio & Program Management Strategy Development Strategic Planning

OPTIMIZATION Business Analysis Process Mapping & Improvement

IMPLEMENTATION Systems & Vendor Selection Project Management Project Recovery

OPTIMIZATION Business Analysis Process Mapping & Improvement

TRANSFORMATION Readiness & Communication Change Management Training & Adoption

TECHNOLOGY SOLUTIONS Microsoft 365, Modern Workplace, Automation, Business Apps, Analytics

Contact: bromas@pivotalconsults.com;
206-261-3048



PRIME
ELECTRIC

SERVICES

- 24/7/365 Service
- Preconstruction & Design-Build
- Electrical Construction
- Technologies
- Civil/Underground
- Renewables

CONTACT

Jon Poulsen

253.740.1861

jon.poulsen@primee.com

Conor Boone

425.429.1821

conor.boone@primee.com

WEBSITE

primee.com



Puget Sound Solar



- Residential solar
- Commercial solar
- Energy storage
- Solar service department
- www.pugetsoundsolar.com

EV Support



- Commercial EV charging solutions
- Multi-family EV charging solutions
- Equipment only EV charging sales
- EV network service department
- www.evsupport.com

Red Z Engineering

Red Z Engineering Provides design services for:

- HVAC
- Plumbing
- Fire protection



Saad Zaki

Mechanical Engineer PE, Co-Founder

C: (253) 709 6232

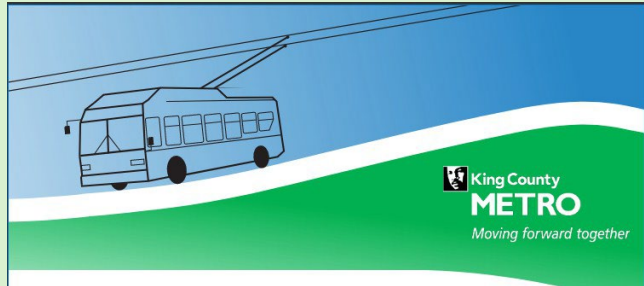
Email: saadz@redzengineering.com

Website: redzengineering.com

RHC Engineering

Service Offerings

- Structural Engineering including transit and transportation structures such as trolley infrastructures, bridges, retaining walls, and utility supports
- Specialized in inspection, load rating, seismic analysis and design, repair retrofit, replacement design, and construction support for conventional and nonconventional structures



Contact Information

Jane Li, 206.330.7443

jane.li@rhceengineering.com

www.rhceengineering.com



SAFARI
MEDICAL TRANSPORTATION

NON-EMERGENCY MEDICAL TRANSPORTATION

Ambulatory, Gurney, and Wheelchair Transportation

- Activities & Group Outing
- Chemotherapy & Radiation
- Doctor Appointments
- Dialysis Treatments
- Elective Surgery
- Hospital Discharges
- Nursing Home Discharges



Daudi Kuyenga

P(206) 816-5173, F(253) 254-7999

dkuyenga@safarimdtr.com

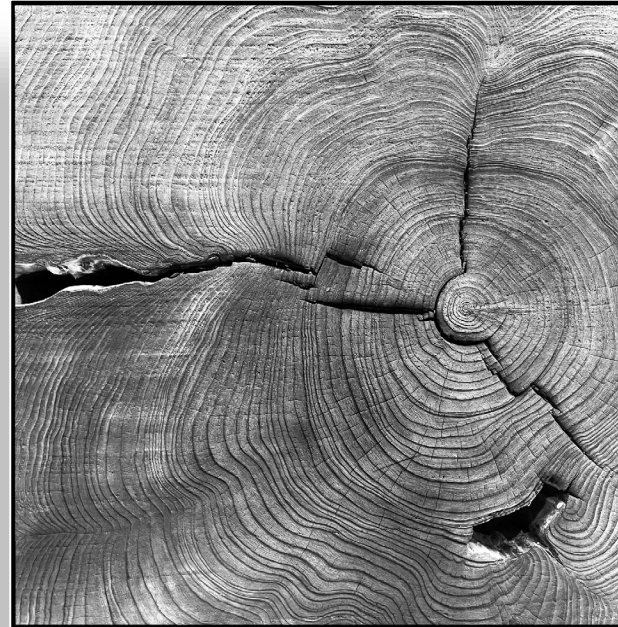
www.safarimdtr.com



SALISH RESTORATION ASSOCIATES

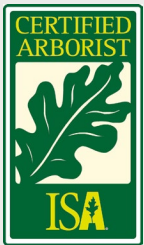
URBAN FORESTRY CONSULTANTS

- Tree Preservation Plans
- Arborist Development Reports
- Forest Restoration Plans
- Tree Inventory and Condition Reports
- Tree Risk Assessment
- Silviculture Health and Monitoring

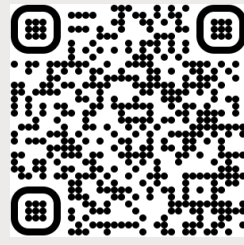


Salish Restoration Associates

Urban Forestry for Sound Restoration



Benjamin Mark
PN-6976a TRAQ



Contact Us

www.SalishForest.com



Schnabel Engineering

Coordinated expertise for your projects, from subsurface explorations and soil testing through engineering analysis, design, and construction support.

- Dam and Levee
- Geoprofessional
- Structures and Facilities
- Tunnel and Underground
- Water Supply, Conveyance, and Distribution

Multidisciplinary experience across a variety of markets and geographies developing site-specific solutions and managing risk for project success.

- Government
- Power and Energy
- Transportation
- Water
- As well as Commercial, Cultural, Industrial, and Institutional



Contact:

Ellen Engberg, PG

Branch Leader / Senior Associate

E: eengberg@schnabel-eng.com

P: 206.919.3430

Thomas Pallua, PG,

Senior Associate

E: tpallua@schnabel-eng.com

P: 206.551.0840

King County Presentation Schedule

Presentations will take place in the White River Conference Room.

10:00 - 10:10am	King County Introductions/Announcements
10:10 - 10:15am	Executive Climate Office – Brian Doyle
10:15 - 10:30am	Facilities Management Division (FMD) - Harborview Bond – Melvin Givens III
10:30 - 11:00am	Roads Services Division – John Rescober
11:00 - 11:30am	Metro – Jen Mayer
11:30 - 11:45am	Solid Waste Division (SWD) – Jesse Gonzalez
11:45am - 12:00pm	Parks – Jason Rich
12:00 - 12:30pm	BREAK
12:30 - 1:00pm	Water and Land Resources Division (WLRD) – Chase Barton
1:00 - 2:00pm	Wastewater Treatment Division (WTD) – Chad Merrill

Event Guide:



King County

Event Schedule

8:30am	Attendee check-in begins
9:00am	Welcome and Keynote Address
9:30am – 2:00pm	Networking & Resource Row Medicine Creek Conference Room/Foyer
10:00am – 2:00pm	King County Project Presentations White River Conference Room
10:00am – 2:00pm	1:1 Contractor Networking Meetings Green River Conference Room

Event Guide:



King County

Sea Con LLC

165 NE Juniper St
Suite 100
Issaquah, WA 98027



Service Offerings:

- General Contracting & Construction Management for Commercial Construction
- Design Build & Turn-Key Project Construction
- Warehouse & Industrial-Use Facilities
- Storage Facilities
- Pre-Engineered Metal Building Systems (PEMB)
- Commercial Tenant Improvements
- Property Development & Management

Estimating Contact:

Taylor Lazaro

Cell – 425.505.3486

Office – 425.837.9720

Email – Tlazaro@seaconllc.com

Website – <https://seaconllc.com>

For **PEMB inquiries**, please contact Kyle Miller

Cell – 425.802.3233

Email – Kmilller@seaconllc.com



Ping Lui
Senior Business Development Manager
206-235-5229
ping.liu@shimmick.com

www.Shimmick.com

Shimmick's Service Offerings

Shimmick is a trusted infrastructure solutions provider with over a century of engineering excellence and a strong West Coast foundation. We deliver complex projects that support communities, drive innovation, and create lasting impact.

Our Focus Areas:

- **Water Resources:** Treatment, storage, and conveyance
- **Climate Resilience:** Flood defense and sea-level rise infrastructure
- **Energy Transition & Technology:** EV infrastructure, battery storage, hyperscale construction
- **Sustainable Transportation:** Mass transit and intelligent transportation systems

We self-perform critical scopes for greater control, safety, and certainty—making us the ideal partner for next-generation infrastructure.

Make it Happen.





shrewsberry

YOUR VISION. OUR FOCUS.

NATIONALLY CERTIFIED
MBE / DBE / SBE

SHREWSUSA.COM



SERVICE OFFERINGS

- Rural & Urban Roadway Design
- Illumination & ITS Design
- Traffic Signal Design
- Roundabout Design
- Channelization / Signing Design
- Sidewalk / Trail / On-Road Bike Facilities Design
- Erosion & Sediment Control Plan Design
- Storm Design & Hydraulic Modeling
- Water & Sewer System Design

CHRIS MASEK, PE

Senior Transportation Manager
Shrewsberry & Associates, LLC

cmasek@shrewsusa.com

..... 425.256.1880



SSA Acoustics, LLP

Consultants in Architectural &
Engineering Acoustics

- Architectural Acoustics
- Noise Control Engineering
- Environmental Noise
- Sound and Vibration Isolation
- Audio Visual Systems
- Acoustical Performance Testing



Alan Burt, PE, Senior Acoustical Consultant

206-839-0819

alan@ssaacoustics.com

www.ssaacoustics.com

Stantec

Empowering people to rise
to the world's greatest challenges

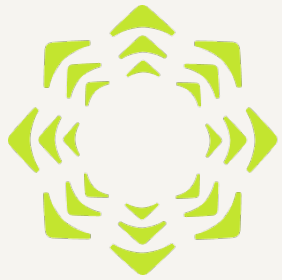


Summary of Services

- Program Management
& Construction Management
- Wastewater Treatment
- Conveyance
- Wet Weather Flow & Urban
Stormwater
- Industrial Water

Nicole Ream	nicole.ream@stantec.com
Stephen Nuss	stephen.nuss@stantec.com
Gabe Solmer	gabriel.solmer@stantec.com

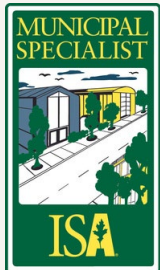
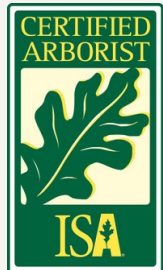
www.stantec.com/en



STARBIRD ENVIRONMENTAL

URBAN FORESTRY & ARBORIST CONSULTING

Our team of ISA Certified Arborists combines arboricultural expertise with comprehensive knowledge of municipal regulations to deliver innovative, cost-effective solutions that balance urban growth with environmental stewardship.



(206) 489-6372

info@starbirdenvironmental.com

www.starbirdenvironmental.com

Seattle, WA

Services Include

Arborist Reporting

Tree Risk Assessments

Tree Inventory

On-call Arborist Services

Urban Forestry Planning

Trees + Construction

Permitting Assistance

Tree Appraisal



STUDIO SEYFRIED

LANDSCAPE ARCHITECTURE & URBAN DESIGN

Services Offered:

- Public Realm & Streetscape Design
- Urban Design & Site Master Planning
- Stormwater & Green Infrastructure Design

- On-Structure Design & Coordination

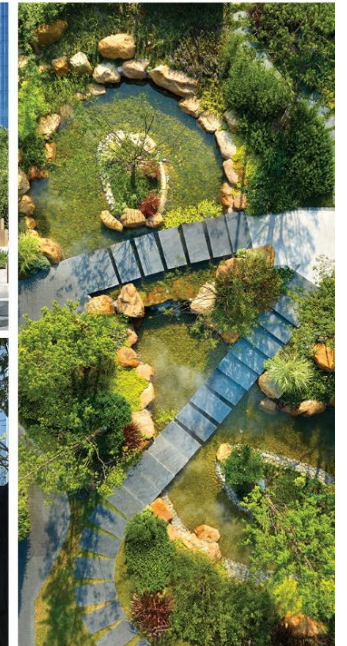
Certifications:

- **SBE:** S000029296
- **King County SCS:** 6540
- **WA PLA:** 24003506
- **NAICS 541320:** Landscape Architectural Services

Contact: Joshua Seyfried, PLA - Founder

Email: jseyfried@studioseyfried.com

Website: www.studioseyfried.com



Connect On LinkedIn





TANNER
PACIFIC

SERVICE OFFERINGS

Construction Management

Managing new construction and existing infrastructure improvements across the water industry spectrum

Owner Advisory

Owner representatives for projects delivered by Collaborative Delivery methods – GC/CM, Design-Build, Progressive Design-Build, and Public-Private-Partnerships



John Mahoney, PE, PMP, DBIA
Office: (650) 585-4484 Ext. 727
jmahoney@tannerpacific.com
www.tannerpacific.com
Small Contractor and Supplier (SCS)



Tarka Consulting Corp.

Training Offered:

- Principles of Project Management
- Leading High Performance Teams
- Agile Project Management for Non-Agile Professionals
- Lean Six Sigma/Process Improvement
- PMP Exam Prep



Contact Information

Emil Tarka/ (206) 612-9311/ emil@tarka-consulting.com

www.tarka-consulting.com



THE VICTOR CLEANING SERVICE

Everything green and clean



Miss the opportunity
to share your
business
information?

You still can!

If you are interested in providing a promotional slide, please send us **one (1) single slide per firm (in PowerPoint format)** that includes your:

- Company name
- Business logo
- Service offerings
- Contact information and
- Website address

We will add it to the business slides from today and post it with the event resources.

Email: Diane Navarro,
dinavarro@kingcounty.gov

Deadline: Friday, April 25



*Increase your
business network*

Speak Human Be Human.



SERVICE OFFERINGS

Strategic Communications: Crafting clear, compelling messaging backed by research.

Audience Research & Insights: Understanding what drivers your audience and how to reach them effectively.

Creative & Content Development: Delivering storytelling that sticks from social media to video production.

Media Planning & Placements: Maximizing reach through strategic, data-driven media campaigns earned media, & media relations.

Community Engagement: Building real connections through thoughtful outreach and two-way dialogue.

The Vida Agency (TVA) is a multicultural marketing and communications agency renowned for its award-winning campaigns. As a certified small business, we prioritize delivering innovative and culturally relevant work that is accessible and reflective of the desired audience. We offer new perspectives, broadened possibilities, provide actionable insights, and introduce ideas for a connected future.

CONTACT INFORMATION

Mafe Cobaleda - Yglesias, Vice President
mafe@thevidaagency.com | 206.279.7045
www.thevidaagency.com



TECHNOLOGY THAT TRANSFORMS

Visit us online for full details of our capabilities and solutions

TIAG.NET



Strategic Planning Program and Project Management



Data Analytics + Data Management



Infrastructure Optimization and IT Service Management



Mobile Application Development



Software Development + Devsecops

CONTACT US:

Matt Higgins, PMP

TIAG® Director

m: 253.365.8311

e: mhiggins@tiag.net



MARKETING MADE EASY...

MARKETING DONE RIGHT

Core Services

- ✓ Marketing Consulting Services
- ✓ Digital Marketing Management
- ✓ Social Media Management
- ✓ PPC & SEO Management
- ✓ Content Marketing



GET YOUR FREE
MARKETING
CONSULTATION



solutions@timumarketing.com



timumarketing.com





Engineering Solutions for

- Transportation
- Industrial + Manufacturing
- Buildings + Sites
- Water

Contact

Phone: 206.557.4614

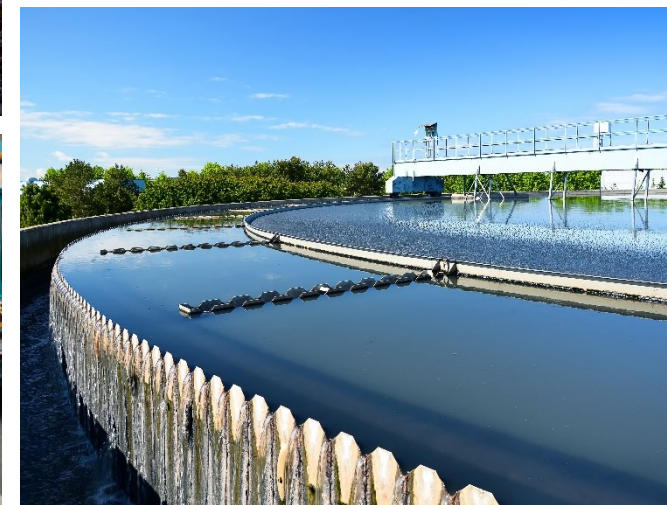
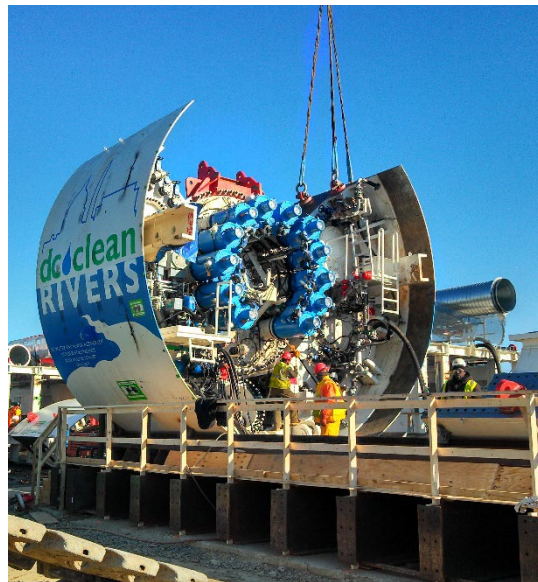
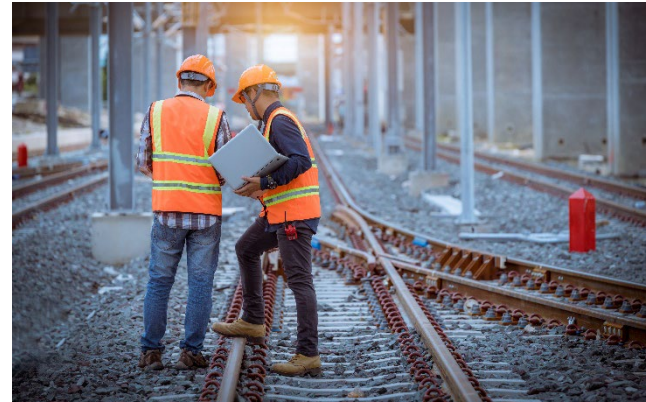
Toll-Free: 800.247.1714

Email: info@tkda.com

2025 1st Avenue, Suite 270

Seattle, WA 98121

WWW.TKDA.COM



Unique Transit

Special need transportation NEMT



office (206)294 0484

tel. 206-399-2694 (mobile)

Fax 206-238 9814

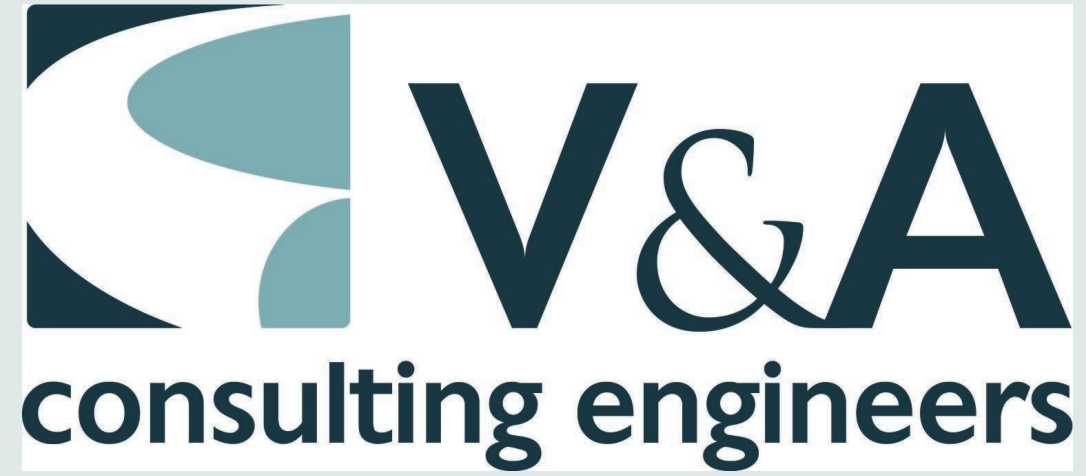
Email unique.transit@gmail.com

<https://www.uniquetransit.com>

V&A Consulting Engineers*

Service Offerings

- Civil/Environmental Engineering
- Coating Systems Management
- Condition Assessment
- Corrosion Engineering
- Data Science
- Flow Monitoring
- Odor Control



Contact Information

Brian Briones, P.E.

(619) 322-1272

bbriones@vaengineering.com

vaengineering.com

* WBE Certified in Washington State

Vets Power Electric

Vets Power Electric is a veteran-owned , OMWBE owned electrical contractor and proud member of **IBEW Local 46**. Based in Federal Way, we serve homeowners, builders, and commercial clients across the region. Our services range from residential and commercial wiring to design-build projects and government contracts. We bring union-quality workmanship, integrity, and reliability to every job—with a strong commitment to safety, code compliance, and customer satisfaction.

Service Offerings

- **Residential Electrical Services**

New construction wiring, panel upgrades, EV charger installations, whole-house rewires, lighting installations, and troubleshooting.

- **Commercial Electrical Services**

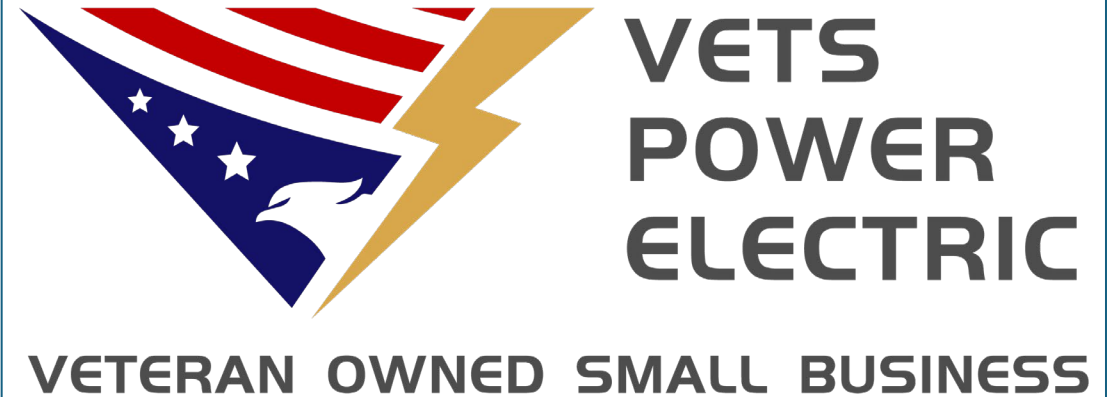
Tenant improvements, restaurant and retail build-outs, lighting upgrades, panel and service upgrades, and emergency repairs.

- **Design-Build Electrical Projects**

Full design-to-installation support for custom electrical systems in both residential and commercial projects.

- **Federal & Government Contracting**

Certified Disabled Veteran-Owned Business with experience in government and public infrastructure projects



Andy Yang / Ryan Don

520-381-1151 / 206-446-2664

<http://www.vetspowerelectric.com>

Waste Management

- Dedicated Construction Specialist and Single Point of Contact
- Customized Sustainability strategies/LEED goals
- Maximized Efficiencies to Help You Stay on Time and on Budget
- Our Drivers Live and Work in your City and are Familiar with the Territory and Community
- Large Fleet of Trucks and Experienced Drivers to Ensure Timely Service



Contact:
Shelley Bloom

425-628-0725

SBloom@wm.com

www.wm.com



Service Offerings

- Park Maintenance
- Trail Maintenance
- Light Landscaping
- Litter Abatement
- Illegal Dumping Removal
- Graffiti Removal
- Community Impact



Darryl Brown
206-841-4137
darryl@weldseattle.org

King County Presentation Schedule

Presentations will take place in the White River Conference Room.

10:00 - 10:10am	King County Introductions/Announcements
10:10 - 10:15am	Executive Climate Office – Brian Doyle
10:15 - 10:30am	Facilities Management Division (FMD) - Harborview Bond – Melvin Givens III
10:30 - 11:00am	Roads Services Division – John Rescober
11:00 - 11:30am	Metro – Jen Mayer
11:30 - 11:45am	Solid Waste Division (SWD) – Jesse Gonzalez
11:45am - 12:00pm	Parks – Jason Rich
12:00 - 12:30pm	BREAK
12:30 - 1:00pm	Water and Land Resources Division (WLRD) – Chase Barton
1:00 - 2:00pm	Wastewater Treatment Division (WTD) – Chad Merrill

Event Guide:



King County

Event Schedule

8:30am	Attendee check-in begins
9:00am	Welcome and Keynote Address
9:30am – 2:00pm	Networking & Resource Row Medicine Creek Conference Room/Foyer
10:00am – 2:00pm	King County Project Presentations White River Conference Room
10:00am – 2:00pm	1:1 Contractor Networking Meetings Green River Conference Room

Event Guide:



King County



CIVIL.
MECHANICAL.
ELECTRICAL.
PLUMBING.
STRUCTURAL.

27300 NE 10th Avenue
Ridgefield, WA 98642

800 N Washington
Avenue, Suite 704
Minneapolis, MN 55401

4802 Oneota Street,
Suite 2
Duluth, MN 55807



Small Business Certification #: S000026407

WWW.WINDSORENGINEERS.COM

MEET OUR TEAM!



Travis Tormanen, PE

MUNICIPAL PRACTICE LEAD
360.903.9281

ttormanen@windsorengineers.com



Mike Montazeri, Ph.D, P.Eng

PROCESS ENGINEER
360.648.8355

mmontazeri@windsorengineers.com



Services:

- Engineering & Architecture
- Water
- Transportation
- Buildings
- Advisory/Planning
- Energy
- Construction Management
- Program Management

WSP USA

Kelsey Hinsperger
Washington Water Business Leader
Kelsey.Hinsperger@wsp.com

Zebra Commercial Solutions Inc dba LiberationX Contracts

*Improving Employee
Experience for All*



U.S. Small Business
Administration

WOSB CERTIFIED

V a n e s s a Z a m y

M a n a g i n g P r i n c i p a l



+1 (307) 395-0423



v a n e s s a @ l i b e r a t i o n x . c o



w w w . L i b e r a t i o n X . c o



N a t i o n w i d e

*LiberationX
Contracts*



Services

- ✓ Customized Skills Trainings
- ✓ Facilitation
- ✓ Strategic Planning
- ✓ Wellbeing and Wellness Experiences
- ✓ Leadership Coaching and Programs

WA UBI: 605-653-241 • UEID: Z126VY7W8LF9 • CAGE: 0DDQ7