



EASTSIDE INTERCEPTOR SECTION 8 (ESI-8) *Rehabilitation Project*



King County

Department of
Natural Resources and Parks
Wastewater Treatment Division

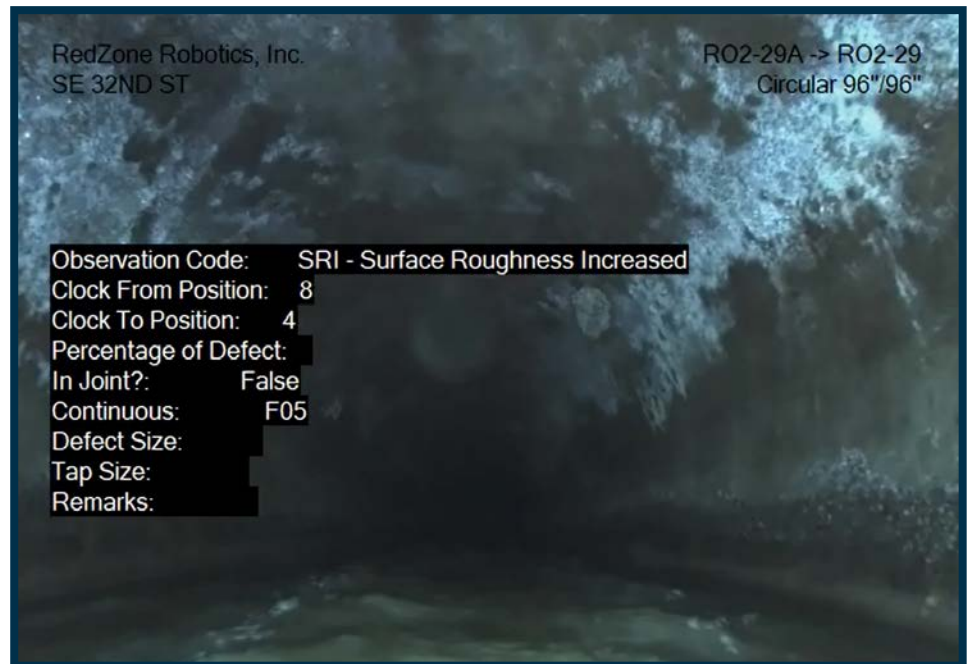
WINTER 2024

A new King County project is coming to your neighborhood, ... and we want to hear from you!

The Eastside Interceptor Section 8 (ESI-8) Rehabilitation Project will repair approximately a mile wastewater tunnel in Bellevue that is nearing the end of its life.

» About the project

King County Wastewater Treatment Division protects public health and the environment by collecting and cleaning wastewater and recovering valuable resources for a thriving Puget Sound Region. The Eastside Interceptor (ESI) is one of the largest conveyance systems within the Wastewater Treatment Division. The ESI collects and conveys untreated wastewater from homes, businesses, and schools in your neighborhood and sends it to South Treatment Plant in Renton, where it is cleaned and released into Puget Sound.



A mile-long section of the ESI, section eight (ESI-8), is breaking down due to age and corrosion. It needs to be repaired to prevent failure, overflow, or disruption of service. This project will repair the section of the pipe that's breaking down. To repair ESI-8, all the wastewater it carries (approximately 55 million gallons per day during the dry season) will need to be sent into a temporary system of pumps and bypass pipes above ground. To maintain sewer service to your neighborhood, the temporary system will allow crews to work inside the existing pipe while maintaining sewer service to the community. Completing this project will support the reliability of a part of the regional wastewater treatment system on the east side of Lake Washington for 50 years to come.

**WE WANT TO
HEAR FROM YOU!**

*Please take our
online survey!*

[publicinput.com/
esi8survey_english](https://publicinput.com/esi8survey_english)

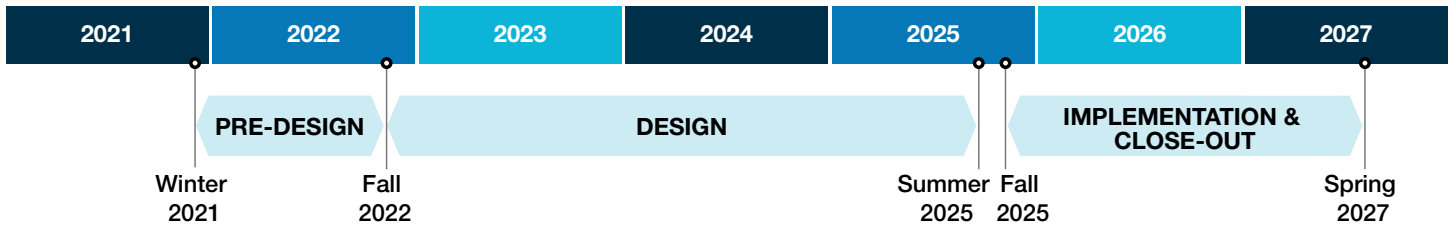
» Project Area

This project will start near the intersection of Interstate-90 and Interstate-405 in Bellevue and run south to the intersection of Coal Creek Parkway Southeast and I-405.

To limit disruptions to neighbors and commuters, the temporary pipes will follow the King County Eastside Rail Corridor (ERC) and exit from the corridor near the Coal Creek Parkway Southeast and I-405 intersection. The temporary sewer diversion pipe will cross I-405 and discharge into a maintenance hole on the east side of I-405.



» Project Schedule



» Working with the community


It is important to us that project neighbors are not surprised by project impacts. King County will work with community groups and project neighbors to provide information, identify issues and solutions, and gather feedback.


» How to stay informed

- Visit the project website at kingcounty.gov/ESI8Rehab to:
 - > get more information
 - > sign up to receive updates
 - > read project news releases
- Request or attend a briefing with a local community groups, agency, or jurisdiction.
- Reply to project surveys. The current survey is available until March 15!

 publicinput.com/esi8survey_english


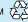
If you have questions please contact Demmelash Adera. Interpretation and translation services are provided free of charge.

 206-263-2340

 deadera@kingcounty.gov



Alternative formats available
206-477-5371 or TTY relay: 711

Printed on recycled stock. Please recycle.  1202M 
File: 2311_13409E_ESI-8_Rehab_Project_Mailer.indd

@KingCountyWTD

