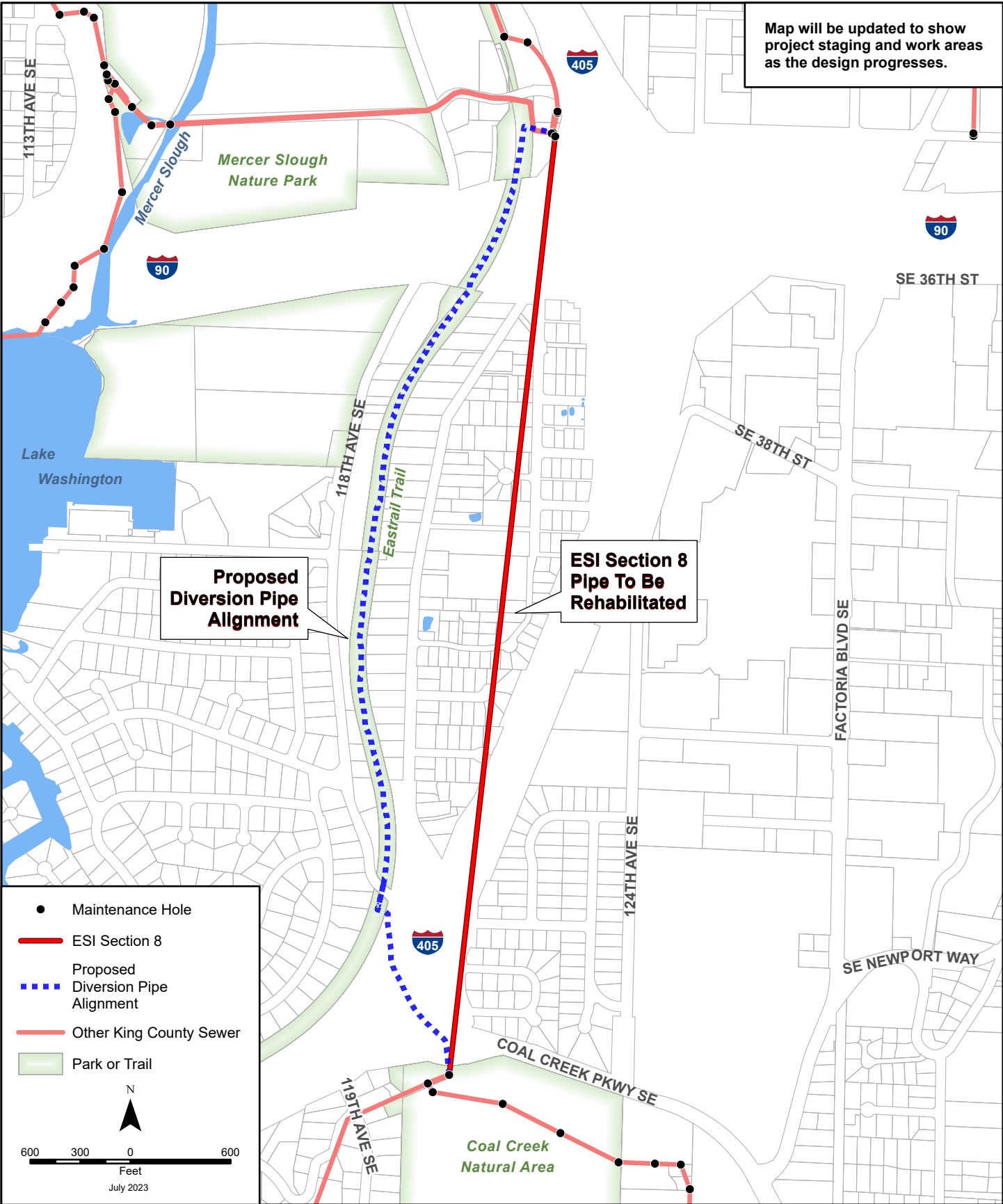


Map will be updated to show project staging and work areas as the design progresses.



**Proposed
Diversion Pipe
Alignment**

**ESI Section 8
Pipe To Be
Rehabilitated**

- Maintenance Hole
- ESI Section 8
- Proposed Diversion Pipe Alignment
- Other King County Sewer
- Park or Trail

N

 600 300 0 600
 Feet
 July 2023



King County
 Department of
 Natural Resources and Parks
**Wastewater Treatment
 Division**

The information included on this map has been compiled from a variety of sources and is subject to change without notice. King County makes no representations or warranties, express or implied, as to accuracy, completeness, timeliness, or rights to the use of such information. This document is not intended for use as a survey product. King County shall not be liable for any general, special, indirect, incidental, or consequential damages including, but not limited to, lost revenues or lost profits resulting from the use or misuse of the information contained on this map. Any sale of this map or information on this map is prohibited except by written permission of King County.

File Name: Q:\WTD\Projects\ESI\Projects\ESI8_Overview\ESI8_Overview.aprx cross

**ESI Section 8
 Rehabilitation Project**