



# **Design Advisory Group Meeting #2**

*Thursday, February 12, 2015*

*6:00 p.m. – 8:00 p.m.*

## Meeting Purpose

- **Review and approve draft Design Advisory Group charter**
- **Discuss King County design examples and share thoughts on community design aesthetic**
- **Develop design guidelines**
- **Learn about the City of Seattle Street Improvement Permit process and City of Seattle Conditional Use Permit**



# Public Comment

## Design Images and Examples

- **Images that represent the Georgetown neighborhood from DAG members**
- **Images of existing King County facilities**



# Design Advisory Group Examples



# Historic



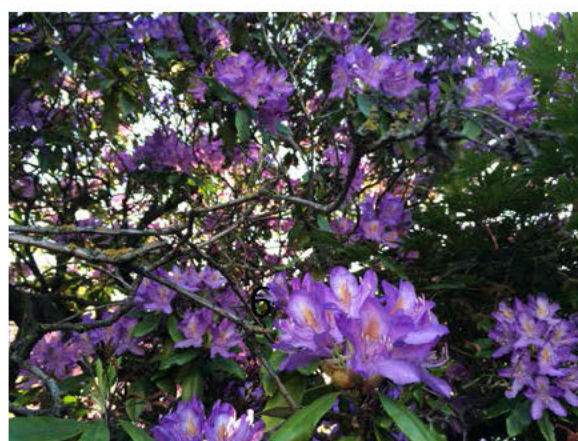
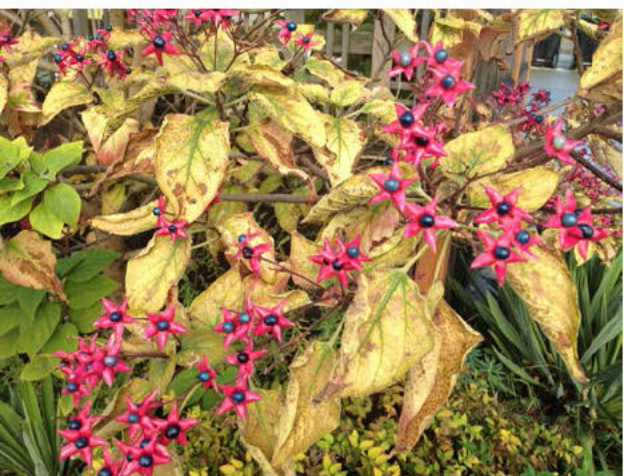
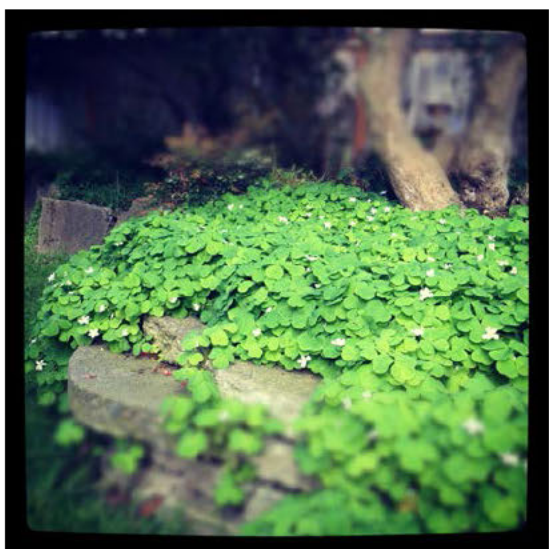
Item No: 51316  
Description: 8th Ave. S. outfall  
Date: Oct 30, 1933

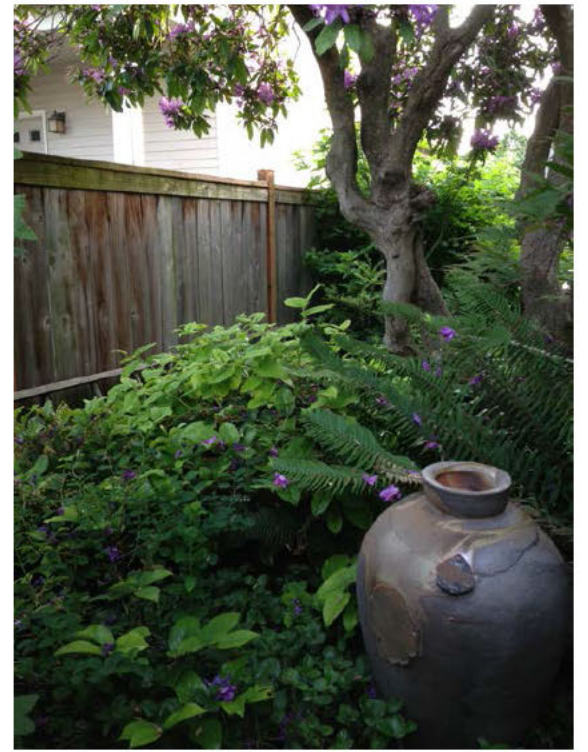


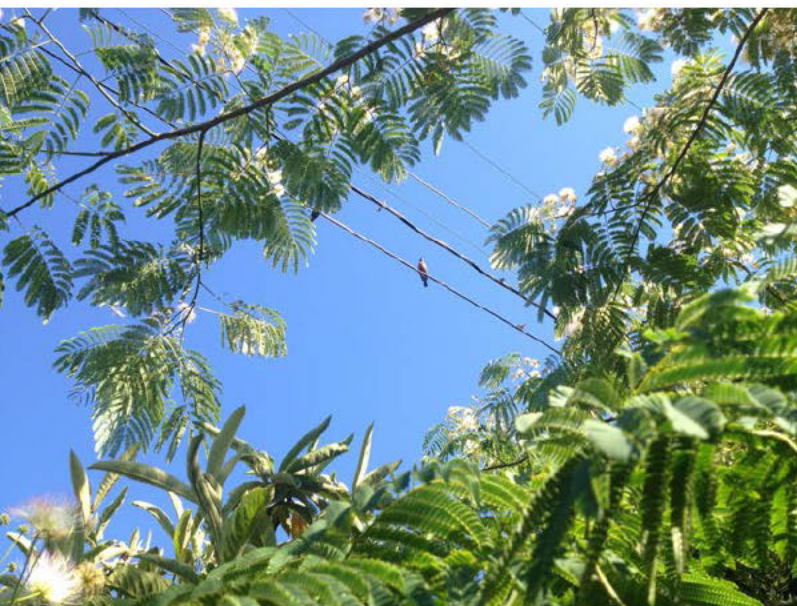




# Nature



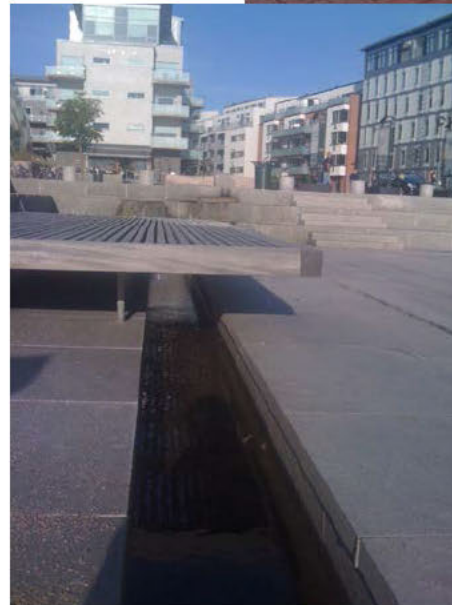






# Architecture





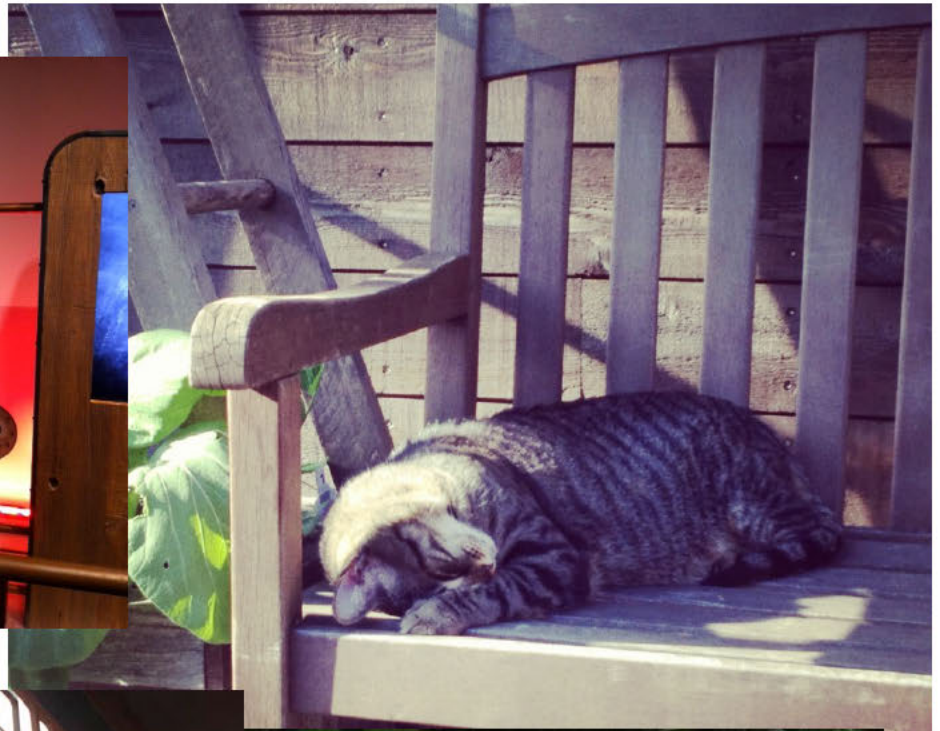




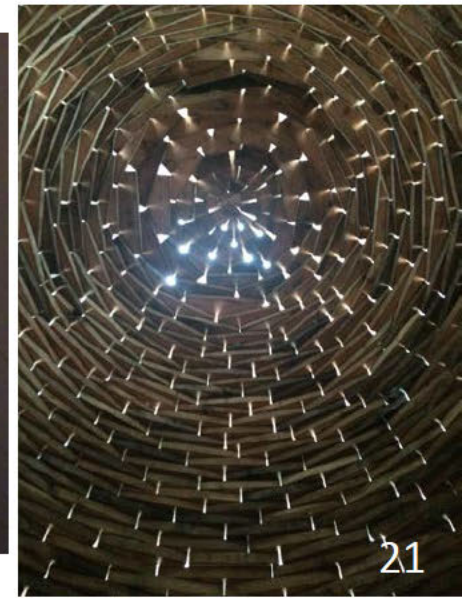
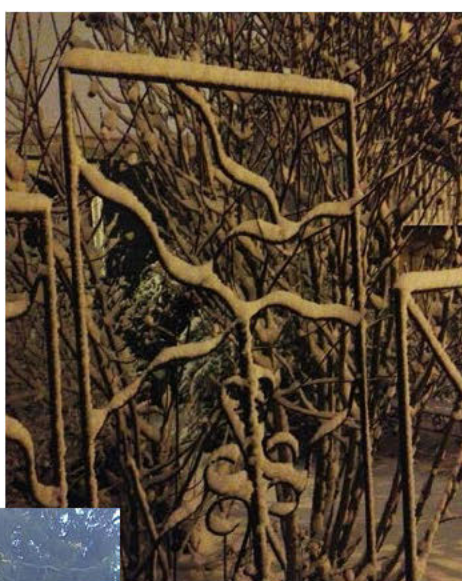




# Character

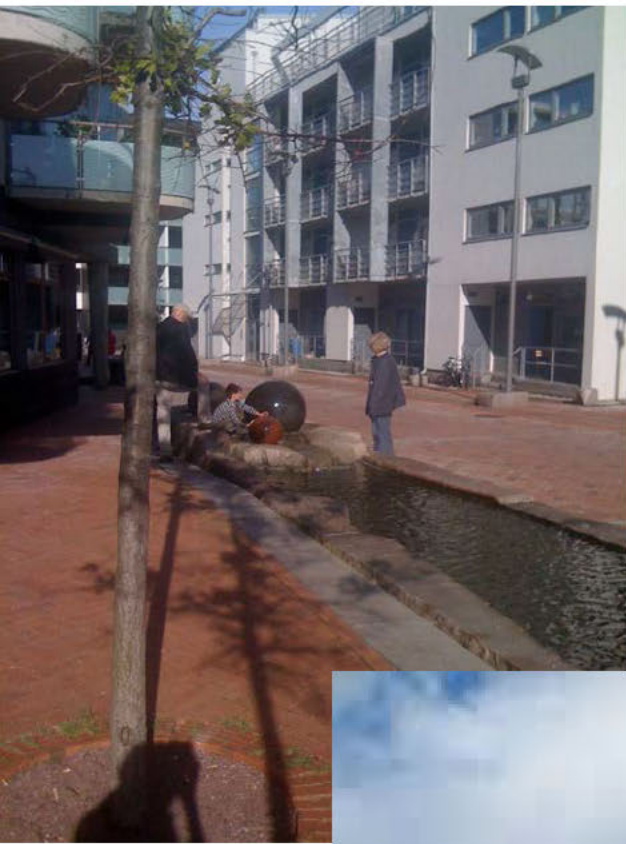








# Landscape











# Industry





# King County WTD Examples

# Working with Communities on Design



Elliott Bay Regulator



Boeing Creek  
Storage Facility



Hidden Lake Pump Station



Boeing Creek  
Storage Facility

# Community Input Informs Design



Dexter Regulator



Lake Ballinger  
Pump Station



Dexter Regulator



Lake Ballinger Pump Station

# Community Input Informs Design



# SUSTAINABLE INFRASTRUCTURE



water



wastewater



solid waste



gateways





# Design Guidelines

- **Convert grey to green**
- **Create a safe, engaging environment**
- **Express how landscape ecology works in the urban environment**

# MAGNUSON PARK

SEATTLE, WA Naturalized [Un]Natural



**Community Asset**  
**Increased Public Access**  
**Amplified Ecological Function**



## Design Guidelines

- **Configure a park that engages the community at all scales – small to large**
- **Embrace diverse neighborhood users**
- **Create a facility that informs the public about Seattle's drinking water system**



Neighborhood Core  
Center of the Action



Artful  
Playful



# CAL ANDERSON PARK

SEATTLE, WA

Urban Park Above 10 Million Gallon Reservoir



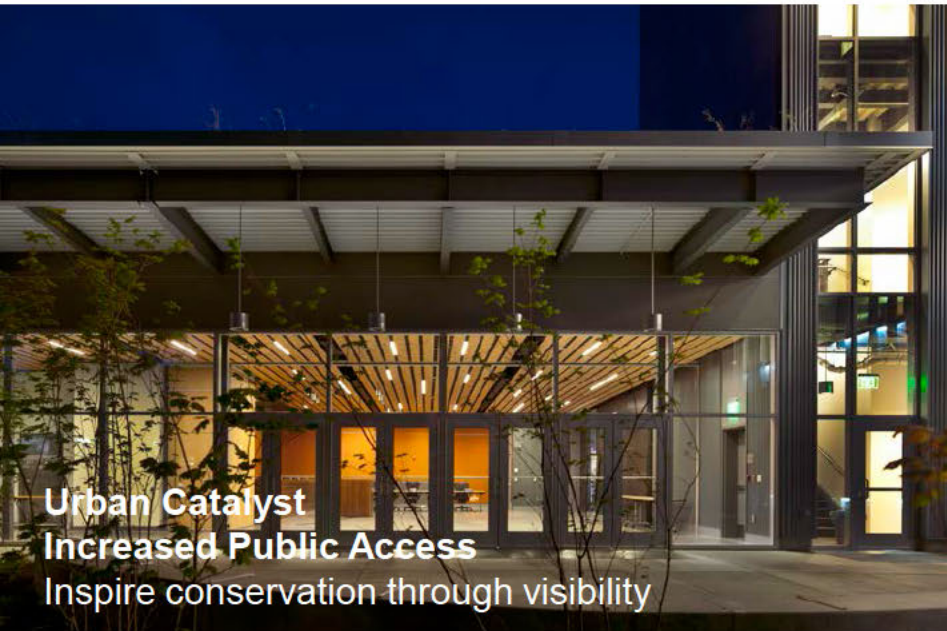
Community Amenity  
Crossroads & Destination  
Flexible, Adaptable & Diverse

## Design Guidelines

- **Serves as a front door to an urban waterfront**
- **Inspire conservation through visibility**
- **Increase public awareness of the municipal wastewater process**

# LOTT CLEAN WATER ALLIANCE

OLYMPIA, WA



**Urban Catalyst**  
**Increased Public Access**  
Inspire conservation through visibility



## Design Guidelines

- **Site design illustrates the natural process of clean water**
- **Balance of public and private uses at a parkland site**
- **Make the invisible visible**

# WILLAMETTE CLEAN WATER PLANT

WILSONVILLE, OR



**Community Asset**  
**Integrative site configuration**  
**Expressive industrial form and materials**





## Design Guidelines

- **Improve the community gateway to the Pemberton business core and Norgate neighborhood**
- **Reduce scale through land massing materials, and vegetation**
- **Develop a knowledge resource for the public**





# Group Discussion

# City of Seattle Street Improvement Permit Process

- **Seattle Department of Transportation (SDOT) will have the final input on design decisions that impact the right-of-way (public space)**
- **Does not impact any decisions made on private property**

# Council Conditional Use Permit

- **Opportunities for public input include:**
  - Public comment period
  - Public hearing(s)
  - Two council reviews

## Upcoming Meetings

*All meetings will be held at South Seattle College Georgetown Campus,  
6737 Corson Ave South, Building C, Room C110/111*

### **DAG Meeting #3**

Thursday, March 12, 2015

6:00 p.m. – 8:00 p.m.

### **DAG Meeting #4**

*Wednesday, April 29, 2015 (TBD)*

6:00 p.m. – 8:00 p.m.



# Public Comment