

GEORGETOWN
Wet Weather Treatment Station



King County

Protecting Our Waters

Doing our part on rainy days

1% for Art Program

ADVANCING COMMUNITY THROUGH CULTURE



ARTS HERITAGE PRESERVATION PUBLIC ART



Cyrus Khambatta Dance. Photo by Charlie Schuck.

ARTS // bringing creativity to the center of everyday life



Duwamish Raven Canoe & SeaFair Pirates, 2012. Photo by Steve Shay.



Robert Morris, Johnson Pit #30, 1979, Earth, grass, King County Public Art Collection, Photo by Spike Mafford

PRESERVATION // conserving community in the face of change

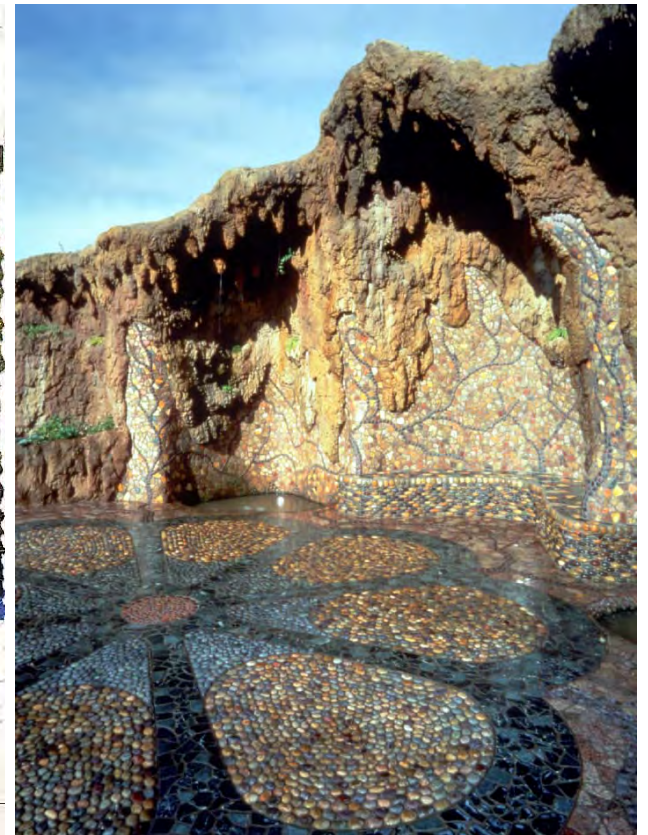
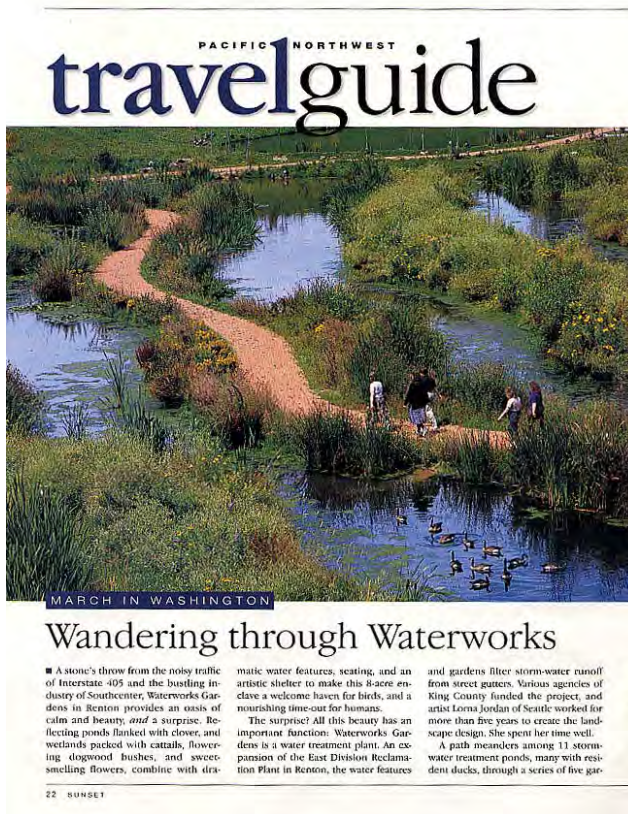


Christian Moeller, *Newsreaders*, 2006, King County Public Art Collection. Photo by YaM Brand.

PUBLIC ART // extraordinary spaces, everyday places



© Lorna Jordan, 1997, *Waterworks Gardens*





© Ellen Sollod, *Collection and Transformation*, 2011. Detail photo courtesy of the artist. Site photo © Benjamin Benschneider.

BRIGHTWATER // artists tell the story of water



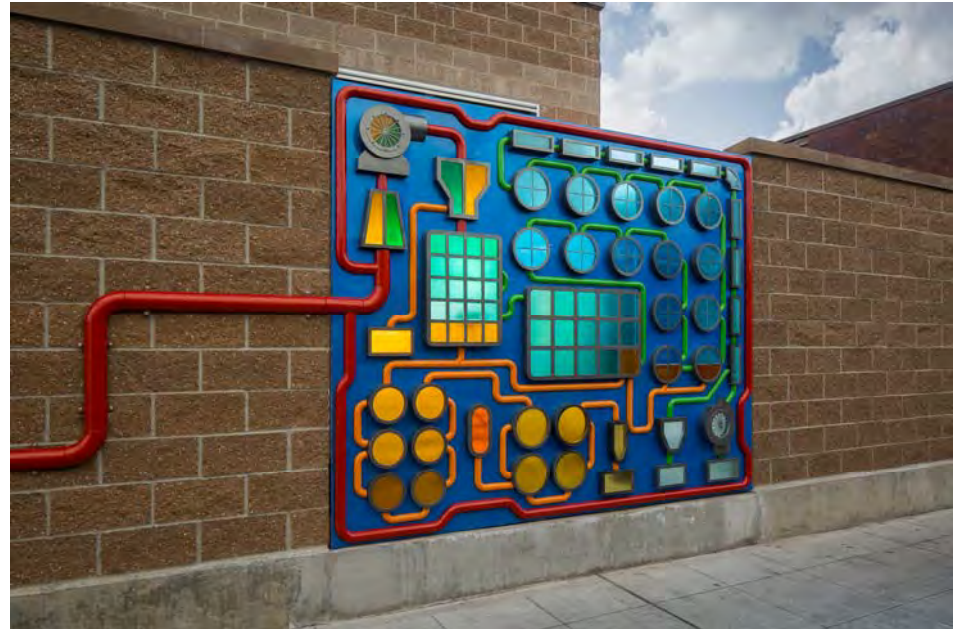
© Cris Bruch, South Branch, North Fork & Puddles, 2011, Detail photos by Stephen Fandrich. Site photo © Benjamin Benschneider.



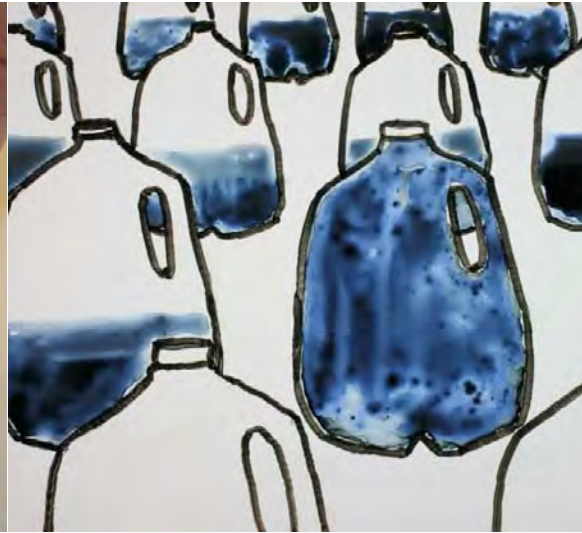


© Don Fels, *Water Plant*, 2010, South Plant, Renton

ART & INFRASTRUCTURE // artists tell the story of water



ART & INFRASTRUCTURE // artists tell the story of water



PROCESS

// 1% of the cost of design and construction of above ground structures is used to support the public art program.

// Serves an educational purpose.

// Beautifies an employee workspace, customer service area, and increases employee productivity.

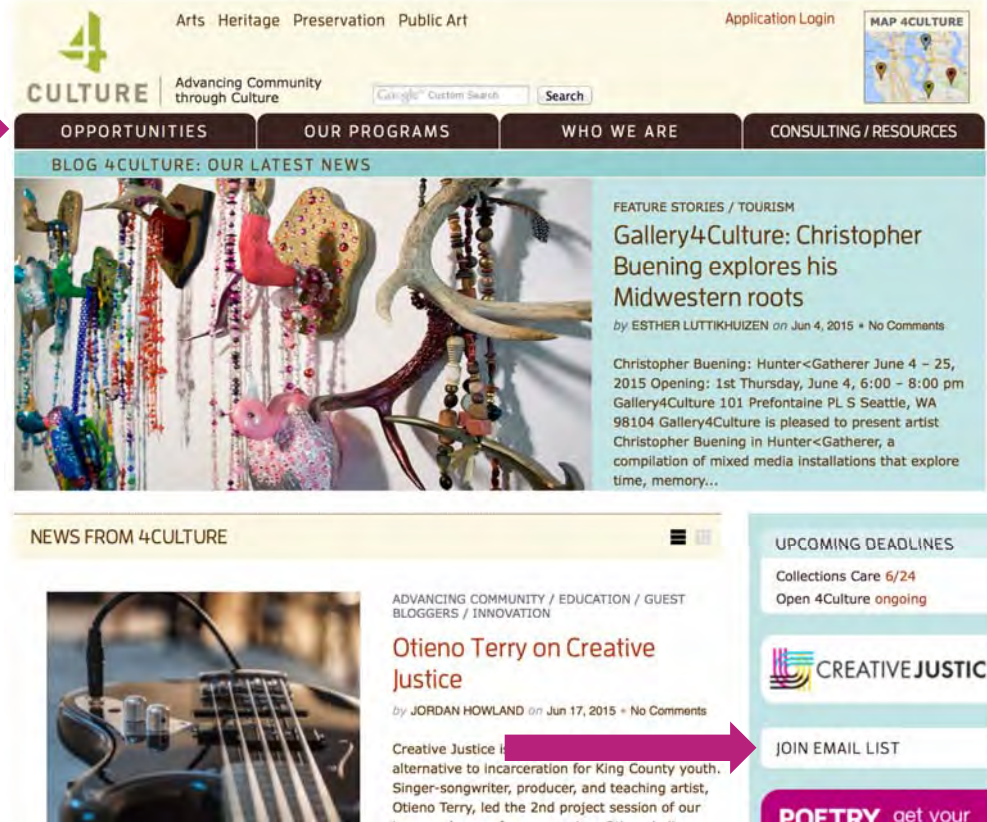
PROCESS

// decision maker and final approval body for artwork in King County capital projects

// artists, design professionals, curator

// provides design review and approval for artists' concepts

PROCESS



Arts Heritage Preservation Public Art

Application Login

MAP 4CULTURE

4
CULTURE | Advancing Community through Culture

Category Custom Search Search

OPPORTUNITIES OUR PROGRAMS WHO WE ARE CONSULTING / RESOURCES

BLOG 4CULTURE: OUR LATEST NEWS

FEATURE STORIES / TOURISM
Gallery4Culture: Christopher Buening explores his Midwestern roots
by ESTHER LUTTIKHUIZEN on Jun 4, 2015 • No Comments

Christopher Buening: Hunter<Gatherer June 4 – 25, 2015 Opening: 1st Thursday, June 4, 6:00 – 8:00 pm
Gallery4Culture 101 Prefontaine PL S Seattle, WA 98104
Gallery4Culture is pleased to present artist Christopher Buening in Hunter<Gatherer, a compilation of mixed media installations that explore time, memory...

NEWS FROM 4CULTURE

ADVANCING COMMUNITY / EDUCATION / GUEST BLOGGERS / INNOVATION

Otieno Terry on Creative Justice
by JORDAN HOWLAND on Jun 17, 2015 • No Comments

Creative Justice is an alternative to incarceration for King County youth. Singer-songwriter, producer, and teaching artist, Otieno Terry, led the 2nd project session of our...

UPCOMING DEADLINES
Collections Care 6/24
Open 4Culture ongoing

CREATIVE JUSTICE

JOIN EMAIL LIST

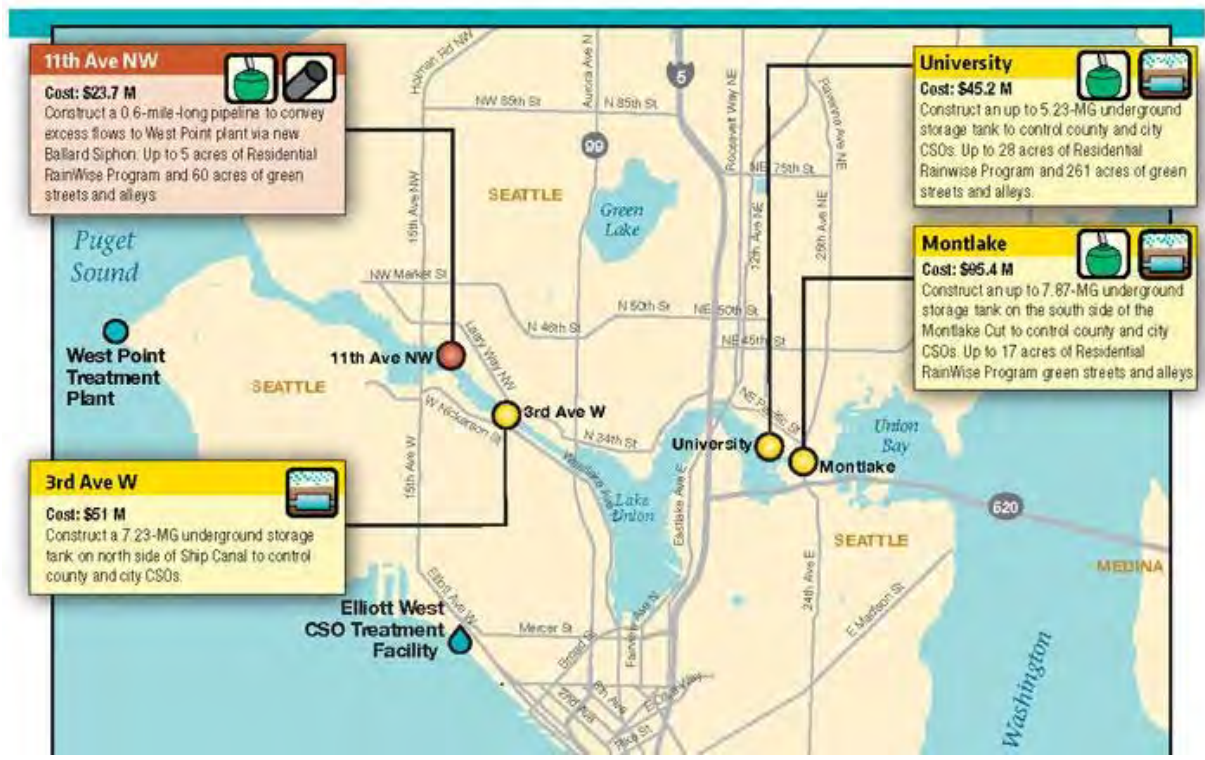
POETRY get your

PROCESS

// 4Culture appoints a selection panel to review applications for each project

// Large-scale projects often have more than one selection panel

PLANNING



SYSTEM OVERVIEW : NORTH AREA

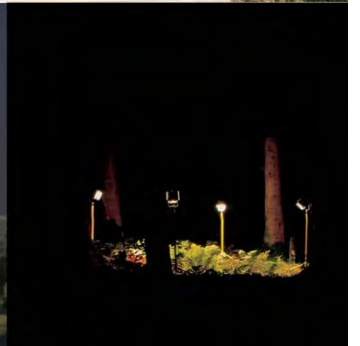
PLANNING

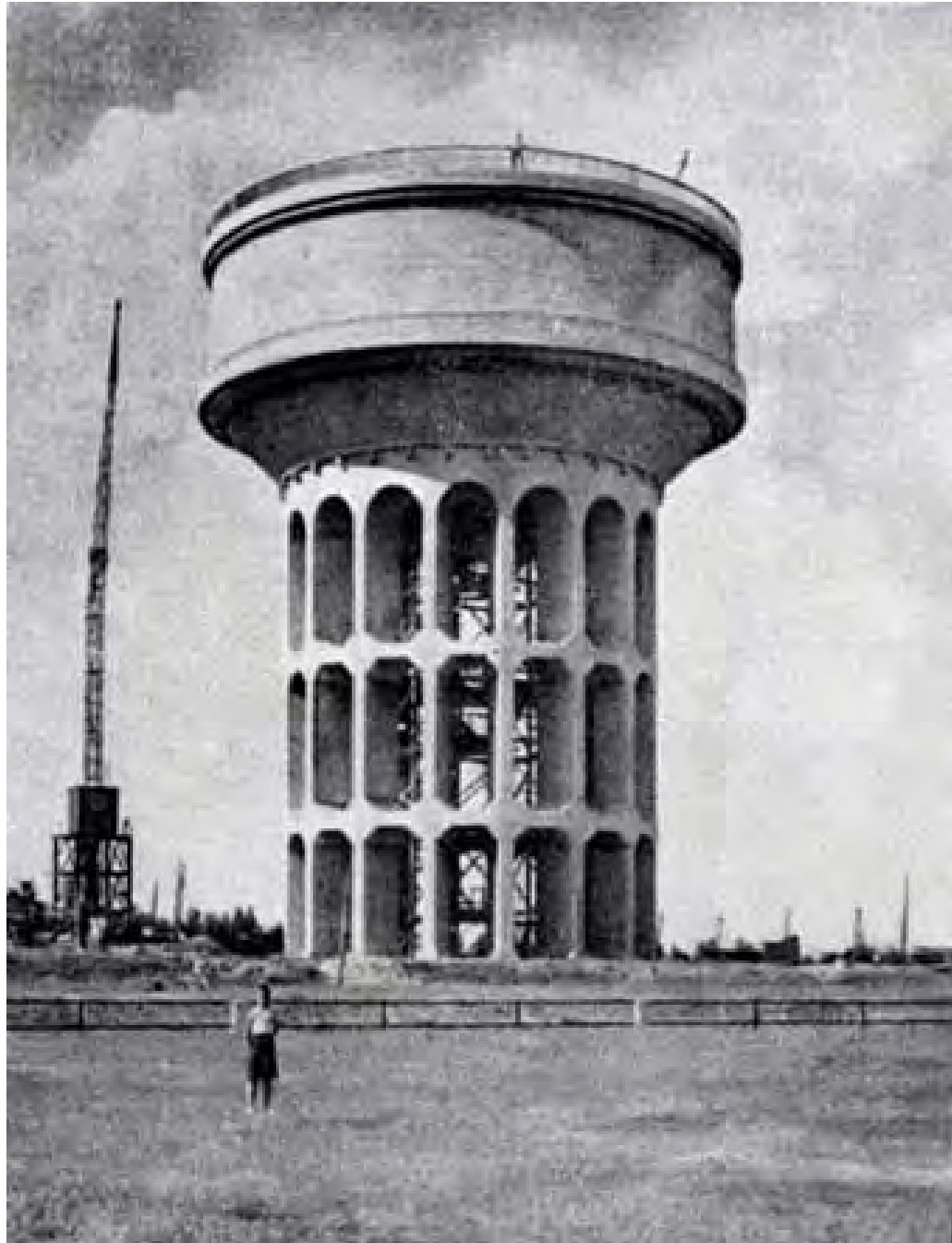


SYSTEM OVERVIEW : SOUTH AREA

PLANNING

- \\ Analyze the opportunities and constraints presented by projects and sub-projects;
- \\ Examine how artwork can express independent projects as part of an interconnected system;
- \\
- \\ Propose implementation strategy and timelines for other artists' work;











Alliam 2240 02

ch?

SKY SPORTS
International Cricket

Alliam 2240 03



JCDecaux

Although th
no film in it

JCDecaux



































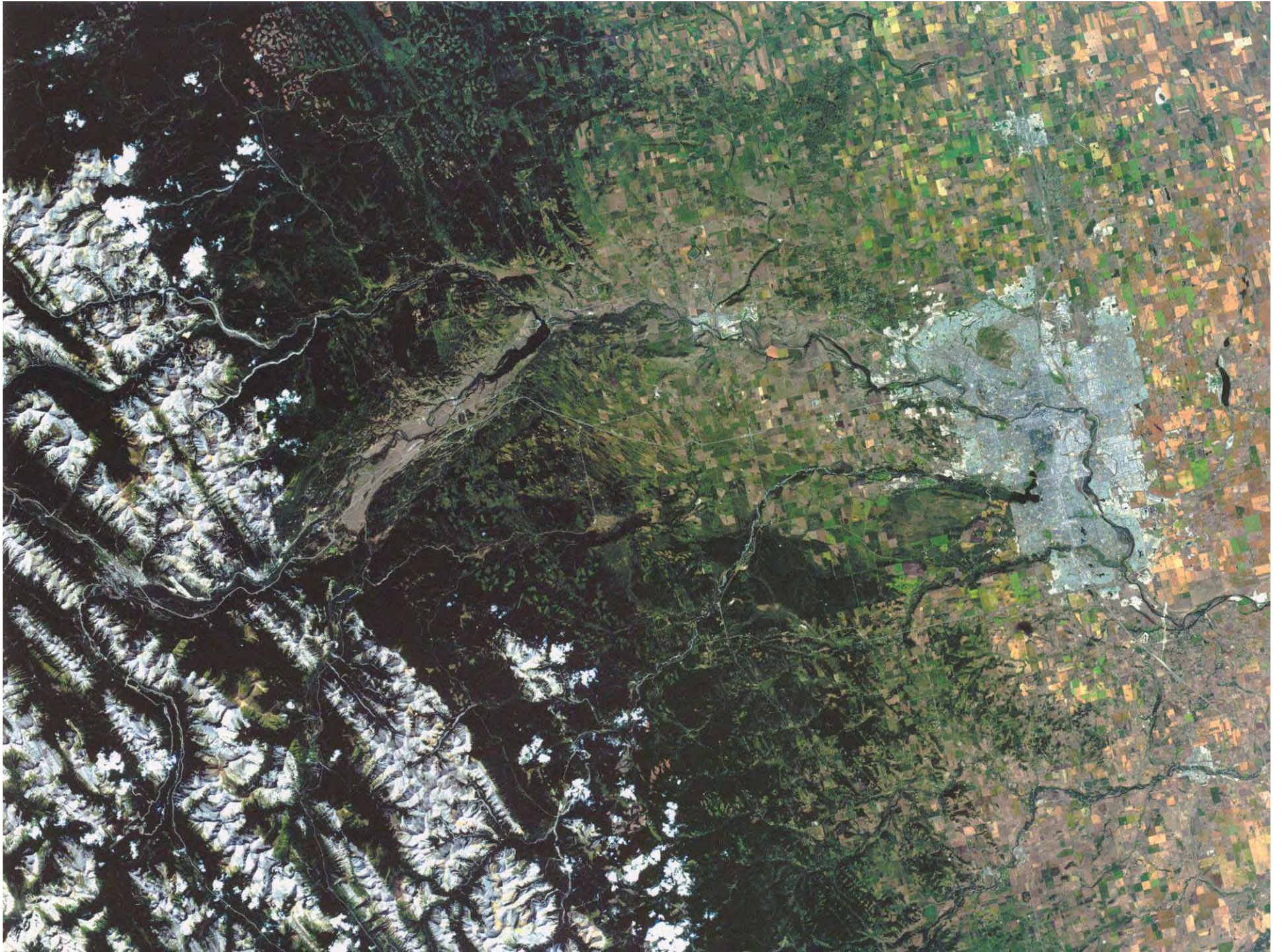














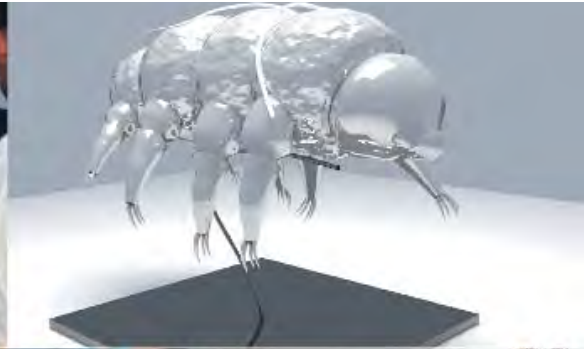
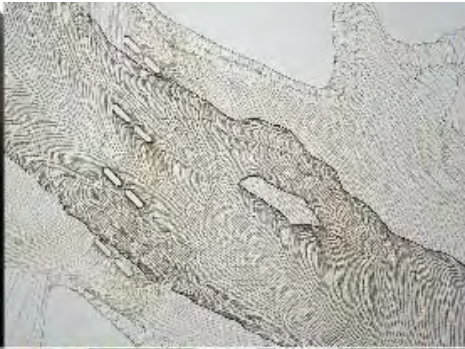




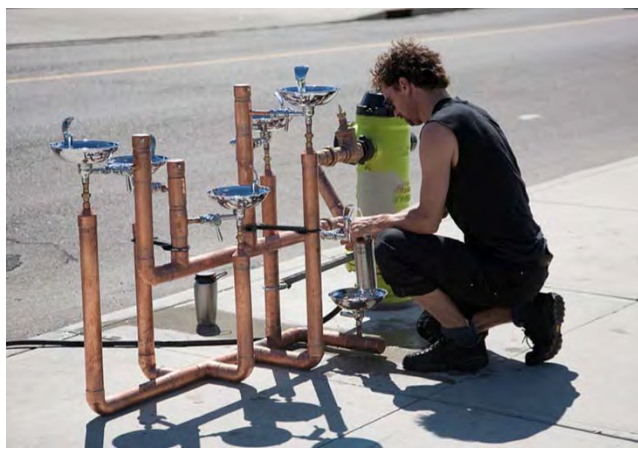












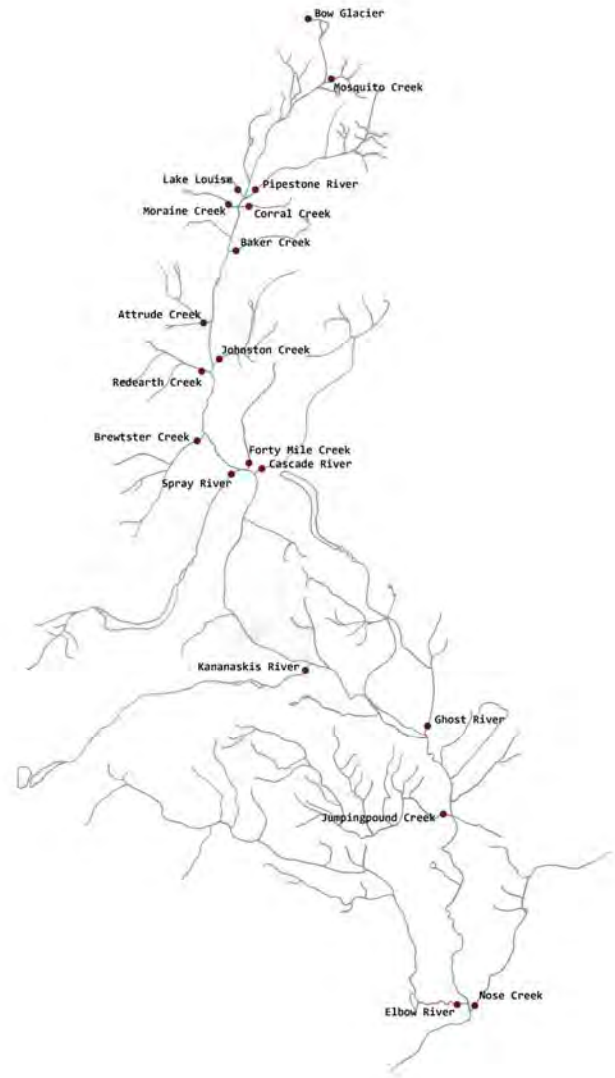


WATERSHED+ RESIDENCIES

at Ralph Klein Park

Photo: Charles Hope







East Bowmont Park







2013
MAYOR'S
URBAN
DESIGN
AWARDS



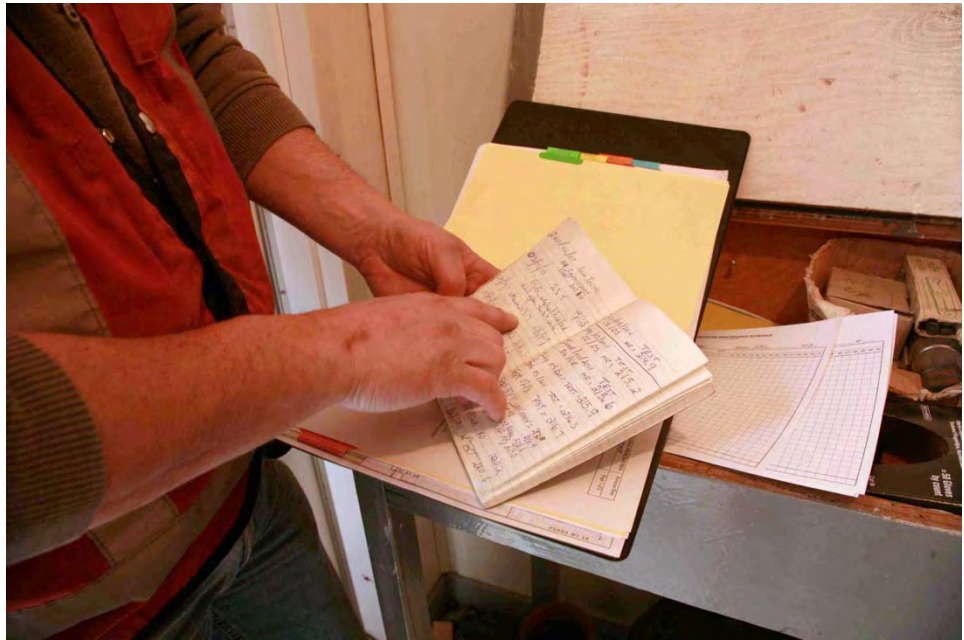


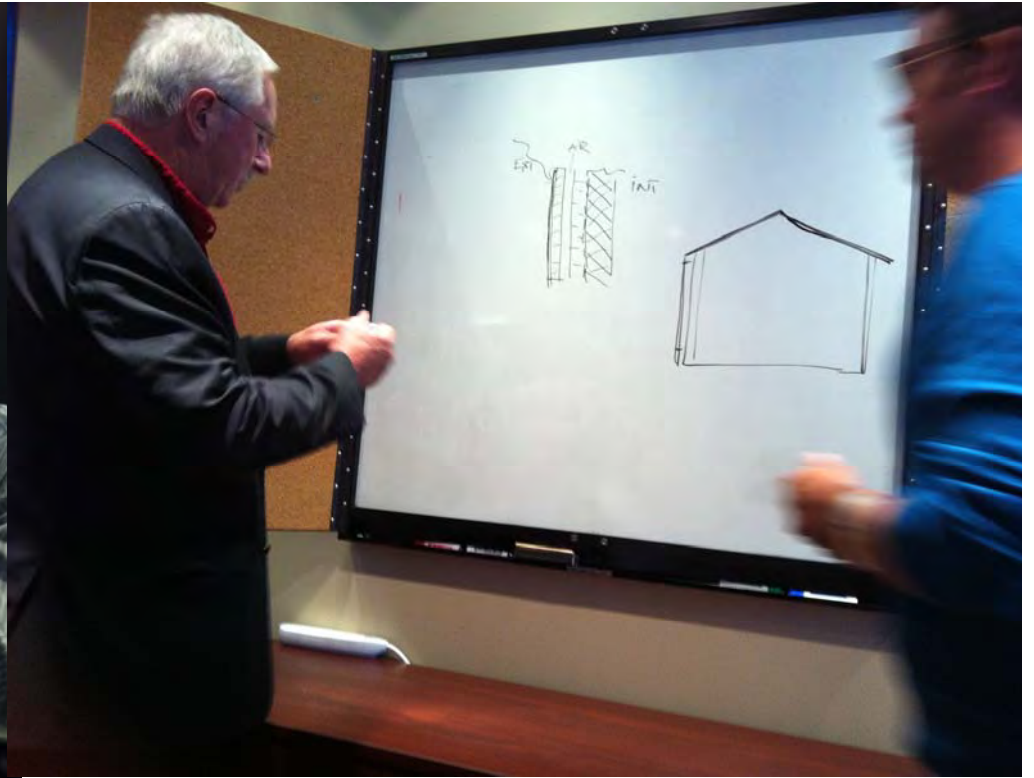


Forest Lawn Lift Station

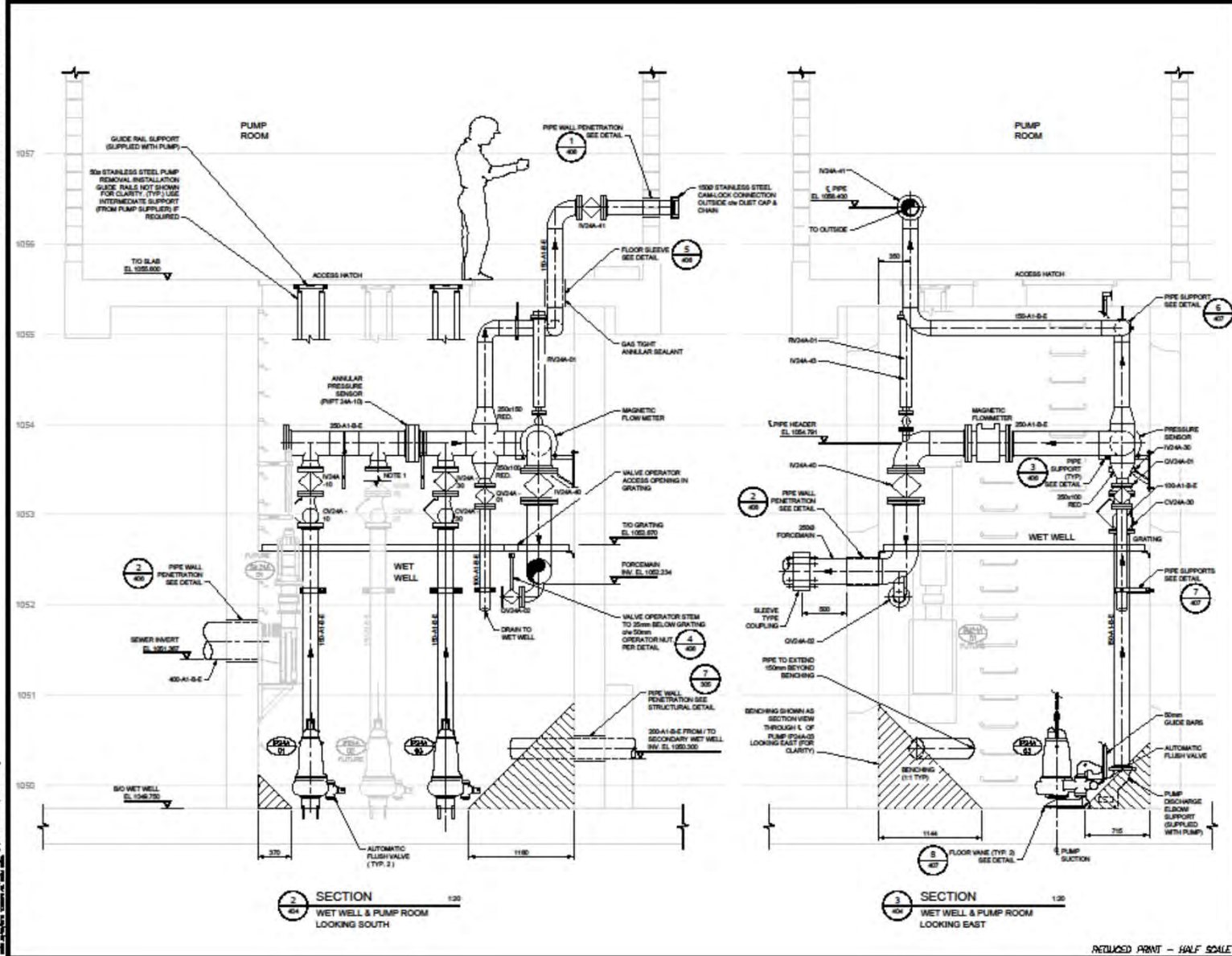


FOREST LAWN
WATER TREATMENT PLANT
1000 S. 1000 E.
EMERGENCY NUMBER
CALL 311





The City of Calgary is not responsible for the design of the lift station or pump room. The design is the responsibility of the engineer of record.



REDUCED PRINT - HALF SCALE

- NOTES:**
- BLIND FLANGE IN PLACE UNTIL FUTURE PIPING FOR PUMP P50A-02 IS INSTALLED.
 - REFER TO DWG. 405 FOR LEVEL BULLS AND ULTRASONIC SET POINT ELEVATIONS.

REVISIONS				
NO.	Y/M/D	ENG.	BY	SUBJECT
1	201804	JM	AK	ISSUED FOR CLIENT REVIEW
2	20180411	JM	AK	ISSUED FOR CLIENT REVIEW
3	20180414	JM	AK	ISSUED FOR PRE DESIGN REPORT
4	20180414	JM	AK	ISSUED FOR PRE DESIGN REPORT

SCALE	AS SHOWN
PROJECT NO.	2018-004
DESIGNED	S. ROBERTS
CHECKED	M. WAGLEY
APPROVED	S. CHEN/OLM
DATE	



FOREST LAWN
LIFT STATION REPLACEMENT

SECTIONS		
DRAWING NUMBER	REV. NO.	SHEET
3504-00-405	D	1

DETAILED DESIGN





The modern Thanksgiving

Kevin L. Eaffinger and Patrick L. Stevens

sew-er-ee-ol-ee-eej, the science of society, social institutions, and social relationships viewed through the eyes of a sewer; specifically, the systematic study of the development, structure, interaction, and collective sewer use of organized groups of human beings.

Most sewer flows are characterized by repeatable diurnal patterns that vary across weekdays, weekends, and holidays. Differences in land use also are apparent, and distractions and disruptions of daily life often can be observed.

This month we take a closer look at Thanksgiving through the eyes of a sewer.

A set of composite hydrographs of sewer use from a residential area in Southern California is provided. Weekdays (Monday through Thursday) are shown in green. Fridays are shown in light



green. Saturdays are shown in light blue, and Sundays are shown in darker blue. The individual weekdays during the week of

Thanksgiving are depicted in red in figures (a) through (d).

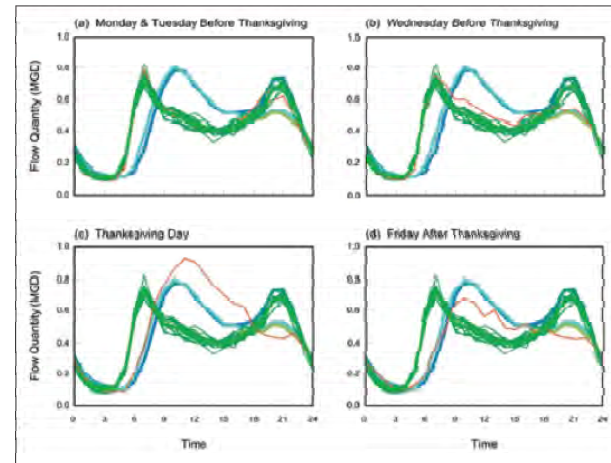
The Monday and Tuesday before Thanksgiving look like typical weekdays. Now take a good look at the Wednesday. What do you see? If you look closely, you will notice that Wednesday looks more like a Friday – a subtle hint that tomorrow is a holiday.

Thursday, Thanksgiving Day, has a distinct change in sewer use, with peak flows occurring around the time of the traditional Thanksgiving meal. The change in sewer use observed on Thanksgiving is larger than that observed on any other holiday in the United States. The Friday after Thanksgiving looks more like a Saturday, as the holiday lingers into the following week end.

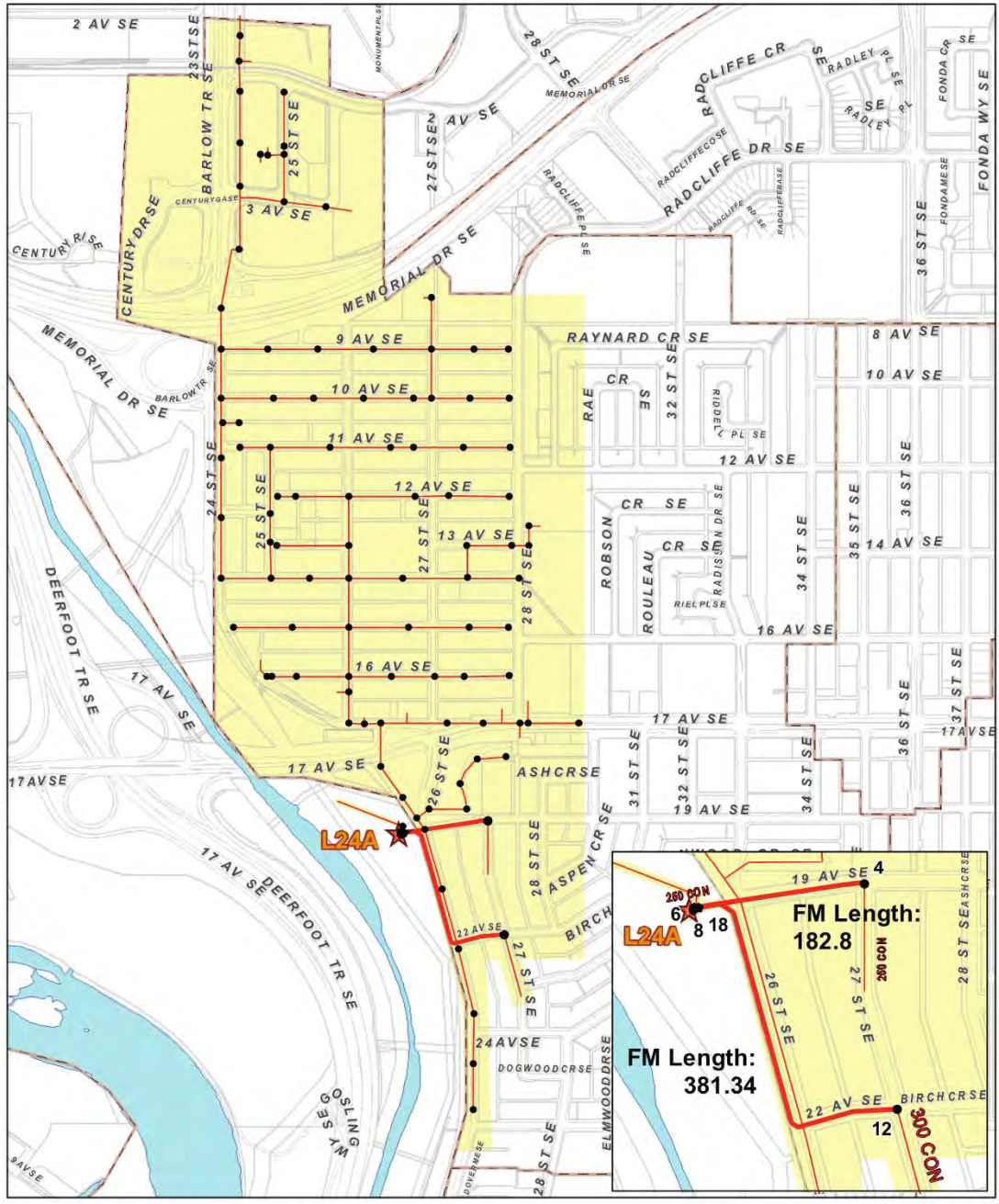
From our sewer sociology family to yours, have a happy Thanksgiving.

Kevin L. Eaffinger is senior project engineer, and Patrick L. Stevens is vice president of engineering at ADS Environmental Services, a division of ADS LLC (Huntsville, Ala.).

Sewer use patterns in a residential area during Thanksgiving week

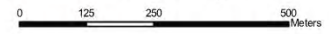




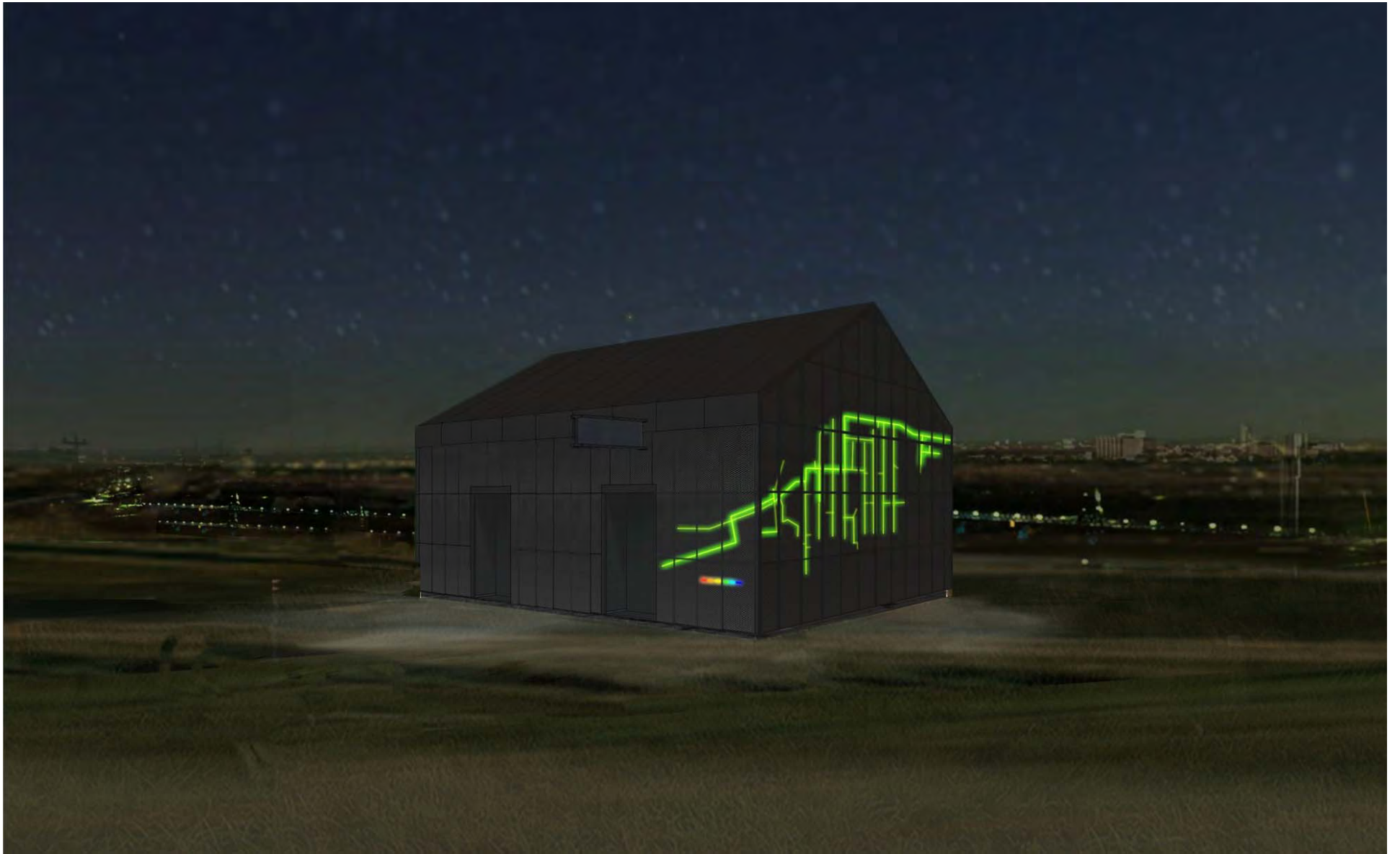


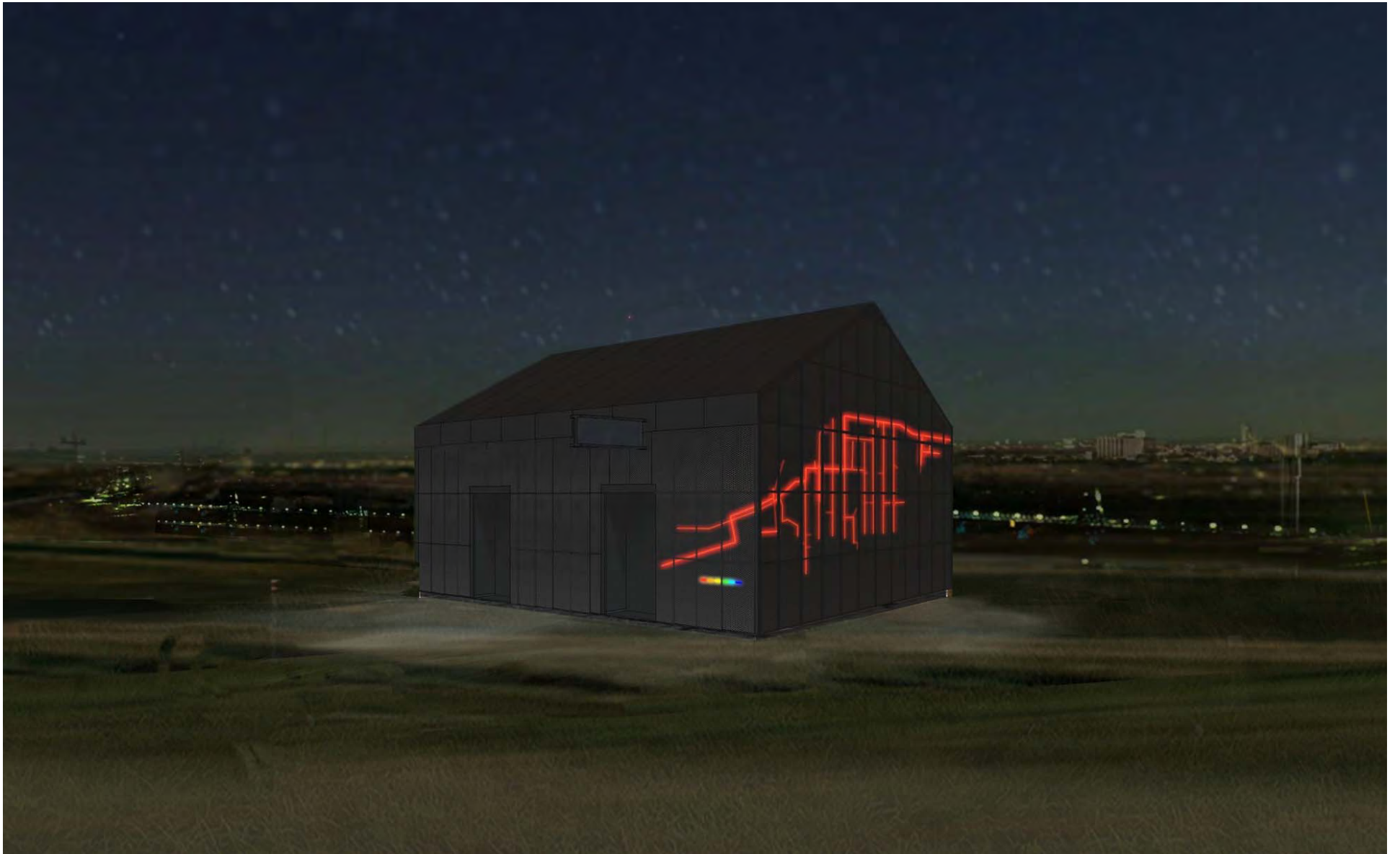
NW-9-24-29-4

FOREST LAWN, SANITARY LS



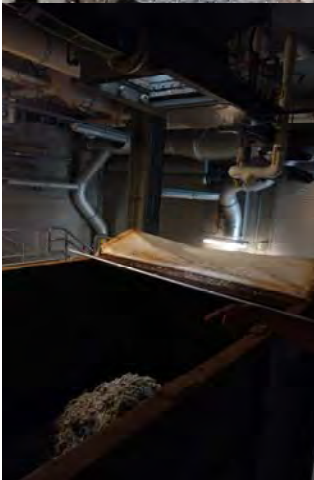
- Air Release Manhole
- Normal Manhole
- Main
- Force Main & Siphon
- Subcatchment limit
- Hydrology
- Track Rail

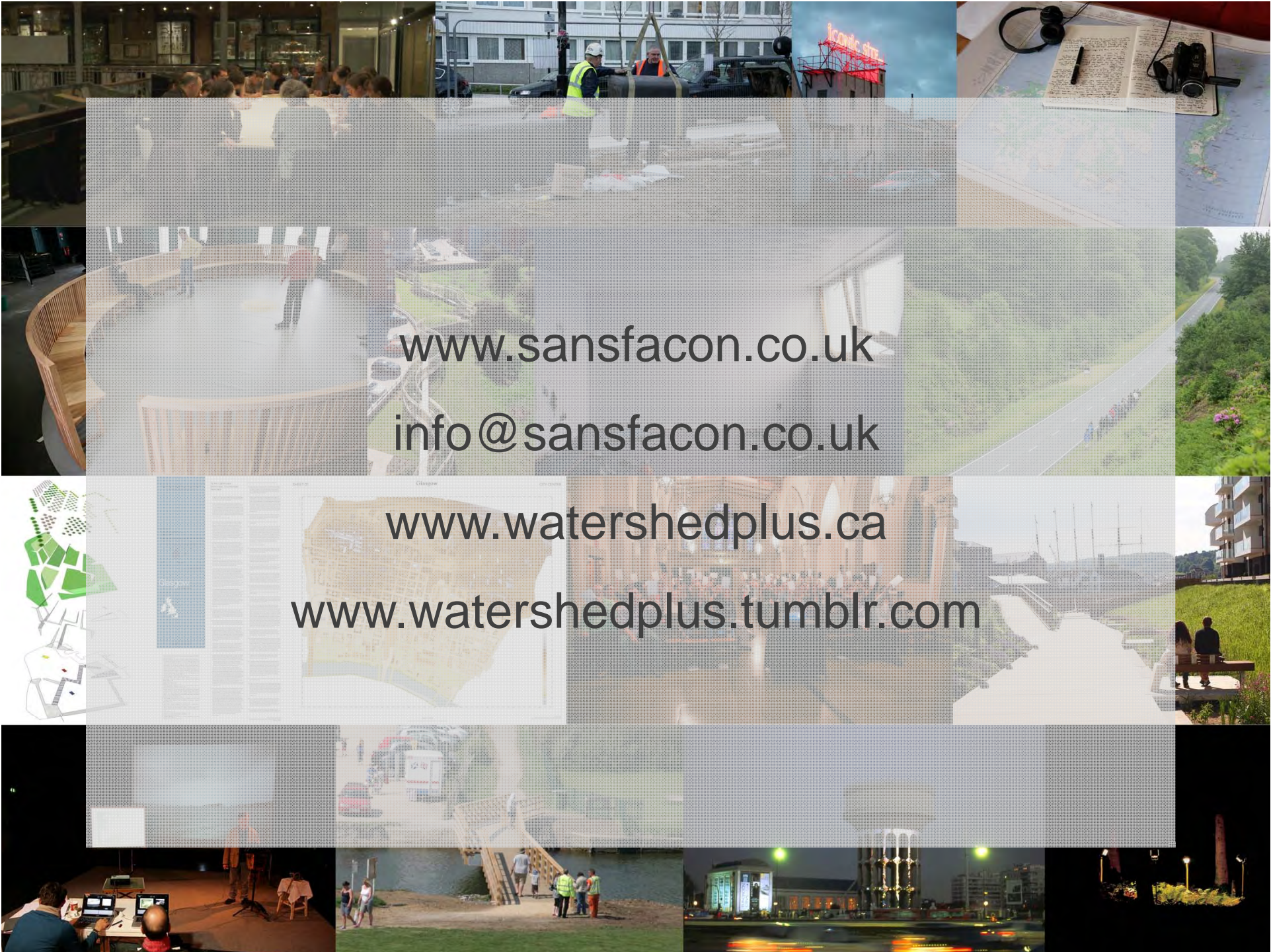












www.sansfacon.co.uk
info@sansfacon.co.uk

www.watershedplus.ca
www.watershedplus.tumblr.com