

Community Open House

Tuesday, June 23, 2015

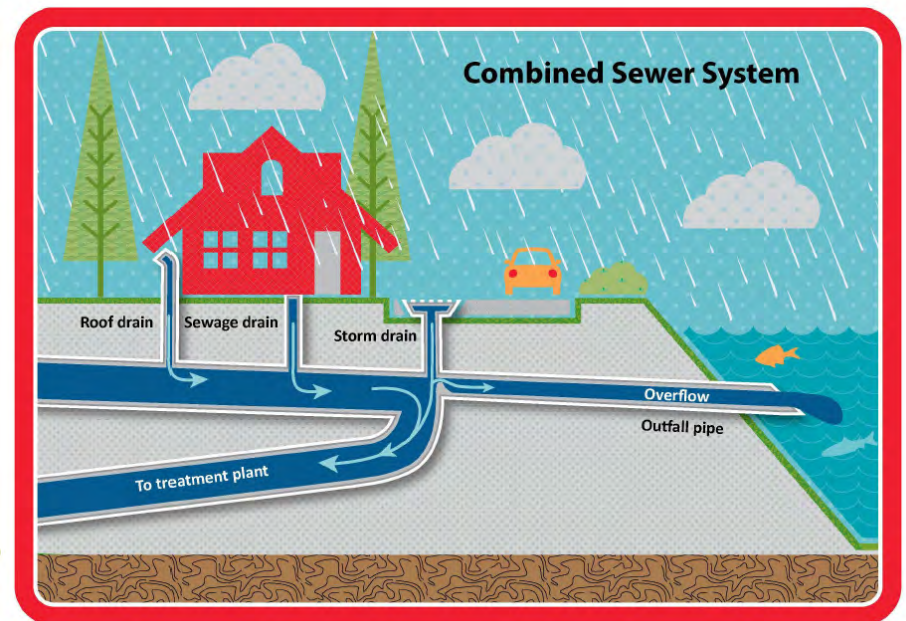
6:00 p.m. – 8:00 p.m.

Meeting Purpose

- **Learn about:**
 - Georgetown Wet Weather Treatment Station
 - Selected site
- **See initial design concepts and provide input**

Project Overview

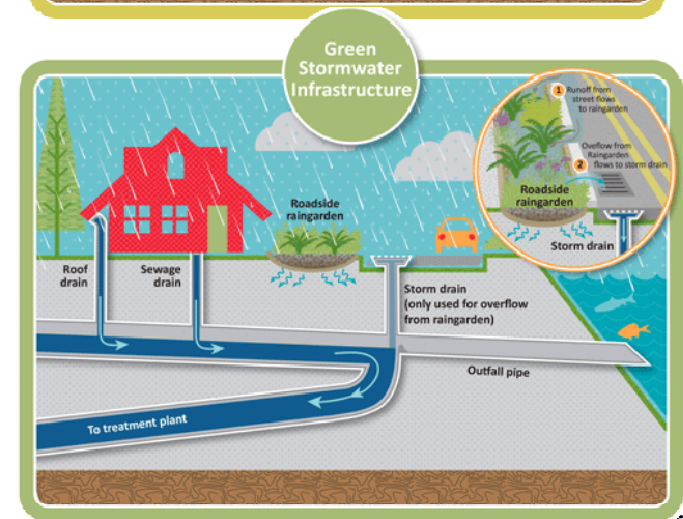
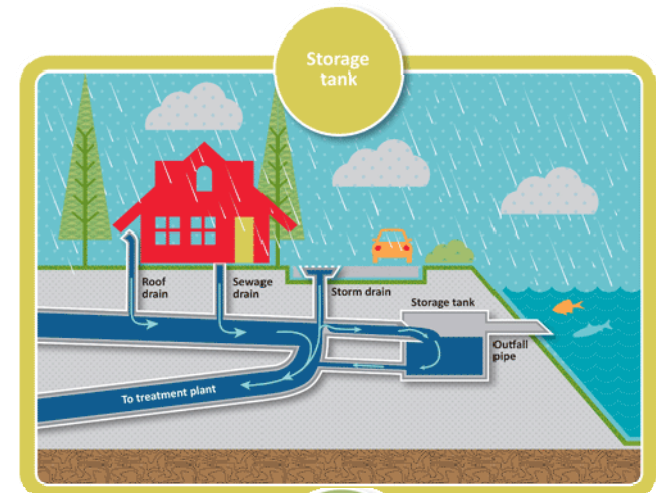
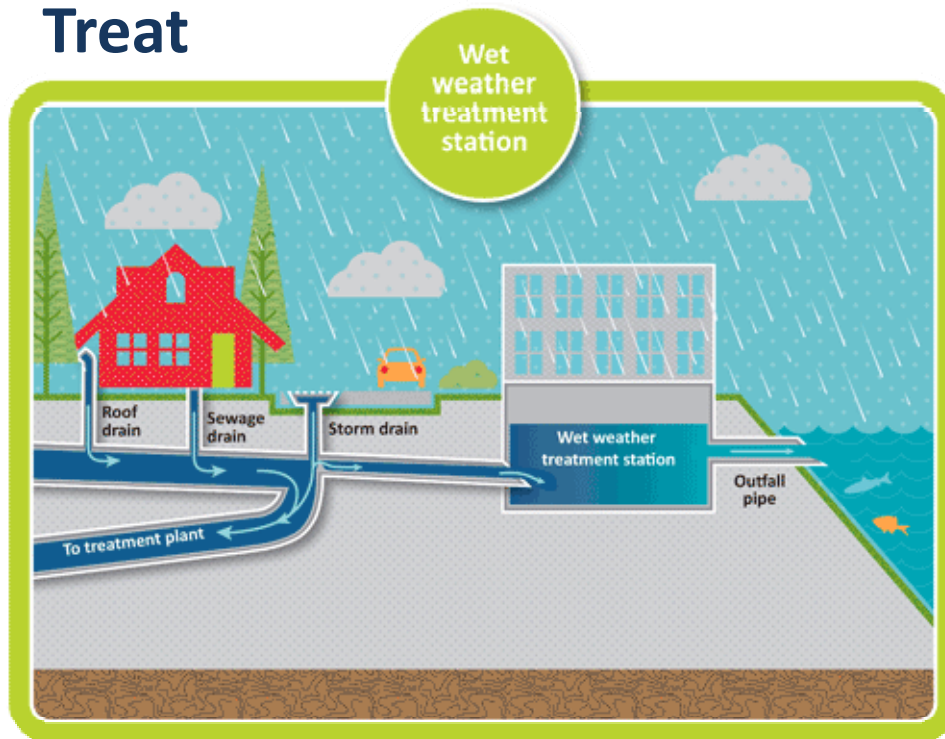
- **Problem: Combined sewer overflow (CSO) into the Duwamish River**
- **Solution: Facility to clean water before returning it to Duwamish River**



Right Technology, Right Location

Looked at multiple options:

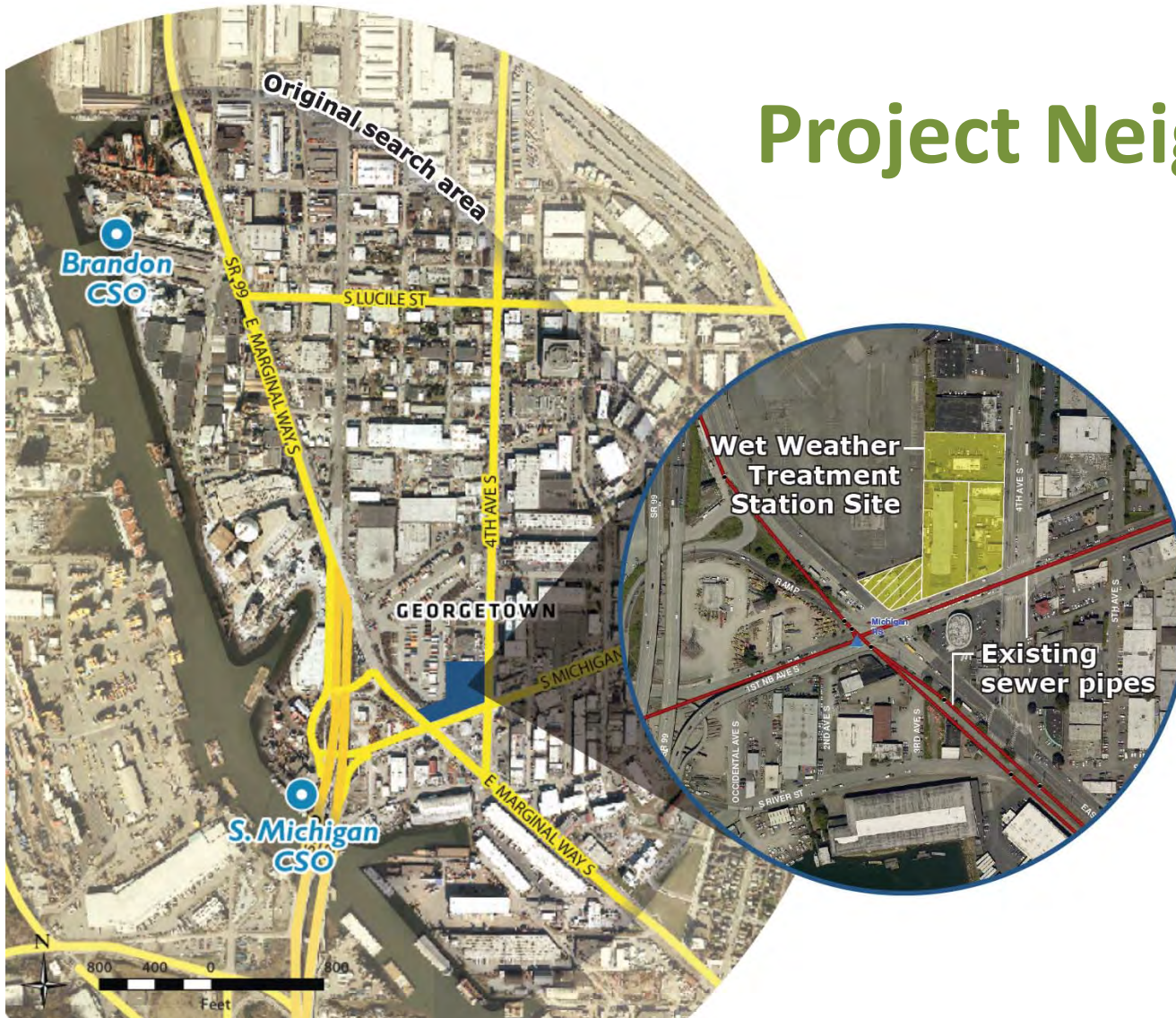
- Store
- Remove from system
- Treat



Project Components

- **Incoming pipes and on-site regulator (gate) to direct water into station during large storms**
- **Wet Weather Treatment Station**
- **New pipes and outfall structure (underwater pipe) to release cleaned water into Duwamish River**

Project Neighborhood



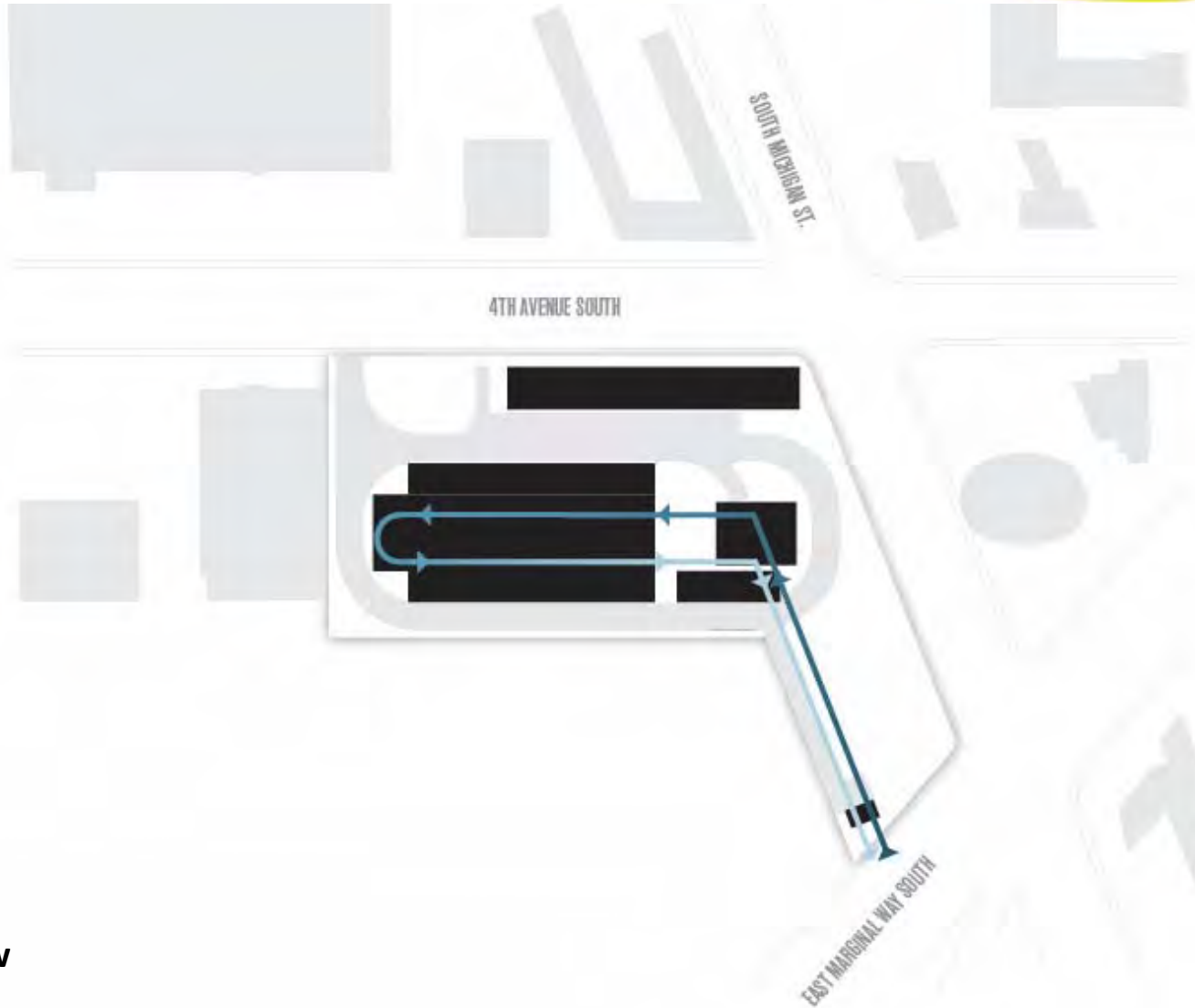


Selected Site

GEORGETOWN

Wet Weather Treatment Station

 King County
Protecting Our Waters
Doing our part on rainy days

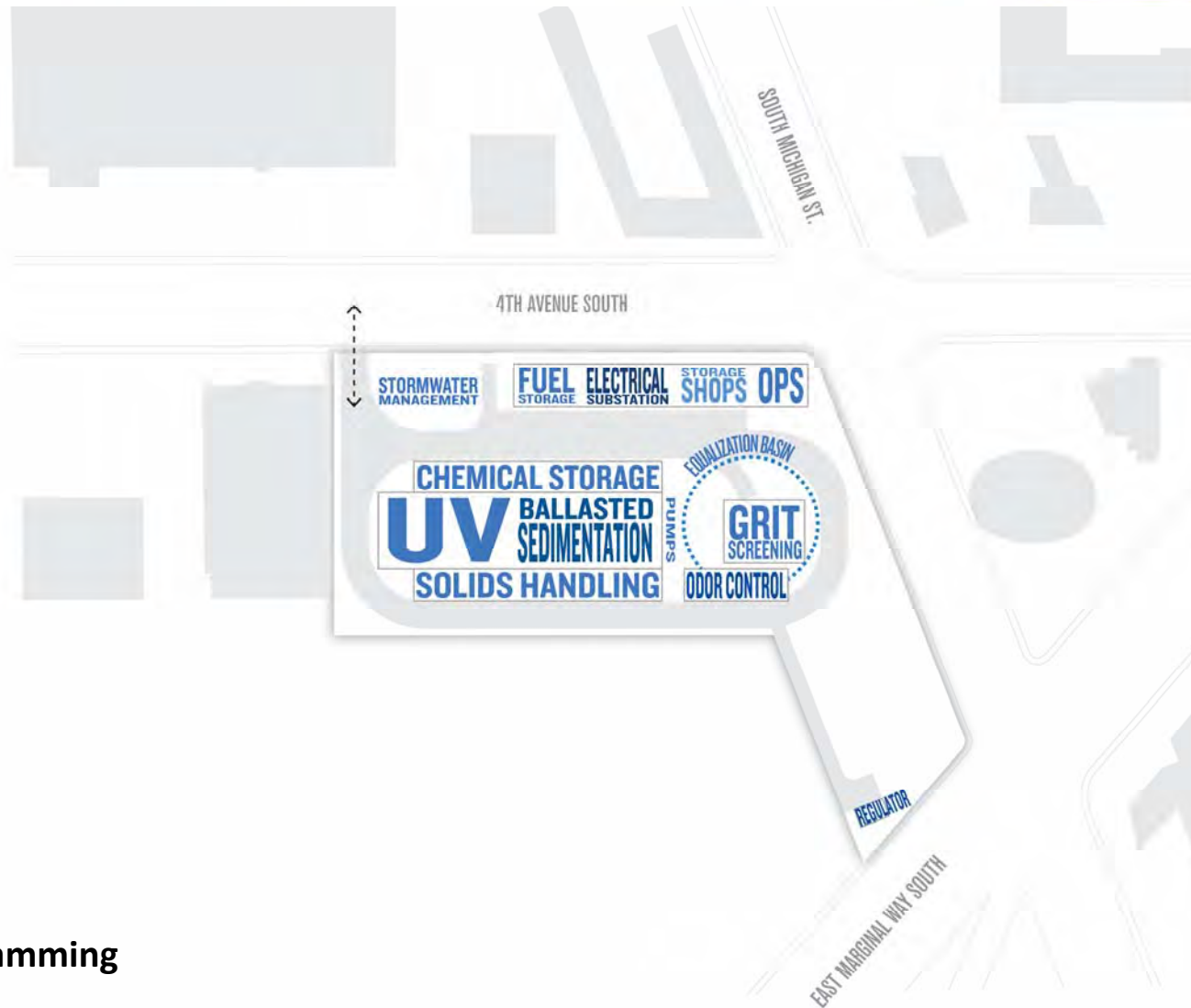


Water Flow

GEORGETOWN

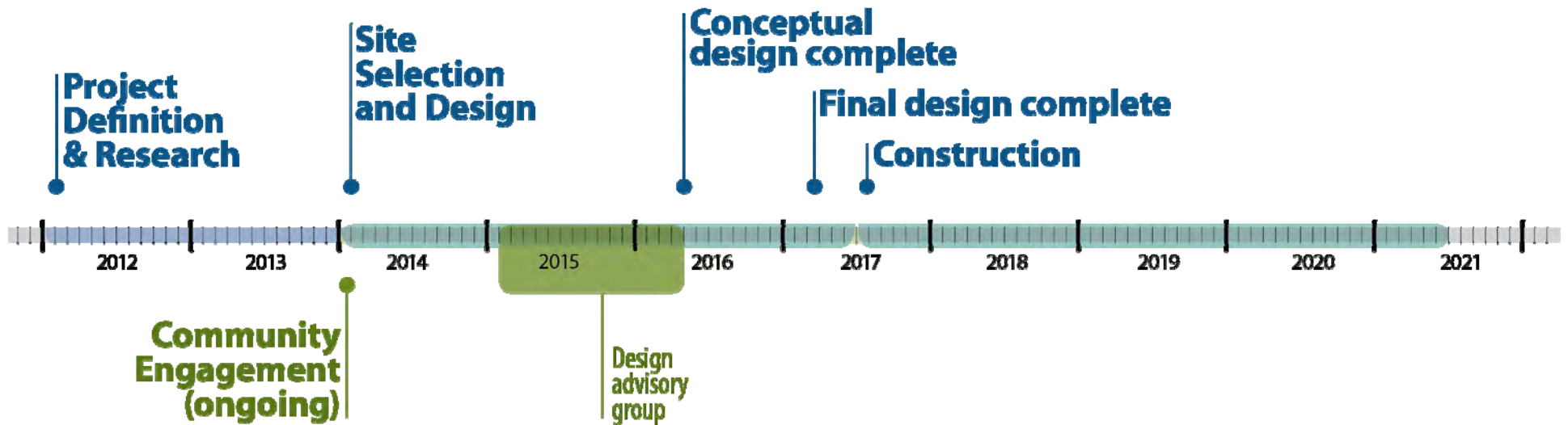
Wet Weather Treatment Station

 King County
Protecting Our Waters
Doing our part on rainy days



Site Programming

Project Schedule



Working with the Community

- **Design Advisory Group**
- **Drop in Sessions**
- **Community Briefings**
 - Georgetown Merchants Association – June 9
 - Georgetown Community Council Meeting – June 15
 - Manufacturing and Industrial Council – June 23
 - Greater Duwamish District Council – June 24
- **Community Events**
- **In-person and Online Open House**

Design Advisory Group

- **Convened in January 2015**
- **Design Advisory Group is:**
 - Reviewing project information to understand what is needed at the station
 - Providing input on the character of the site
 - Advising on the look of the station to help it fit more closely into the community

Design Guidelines

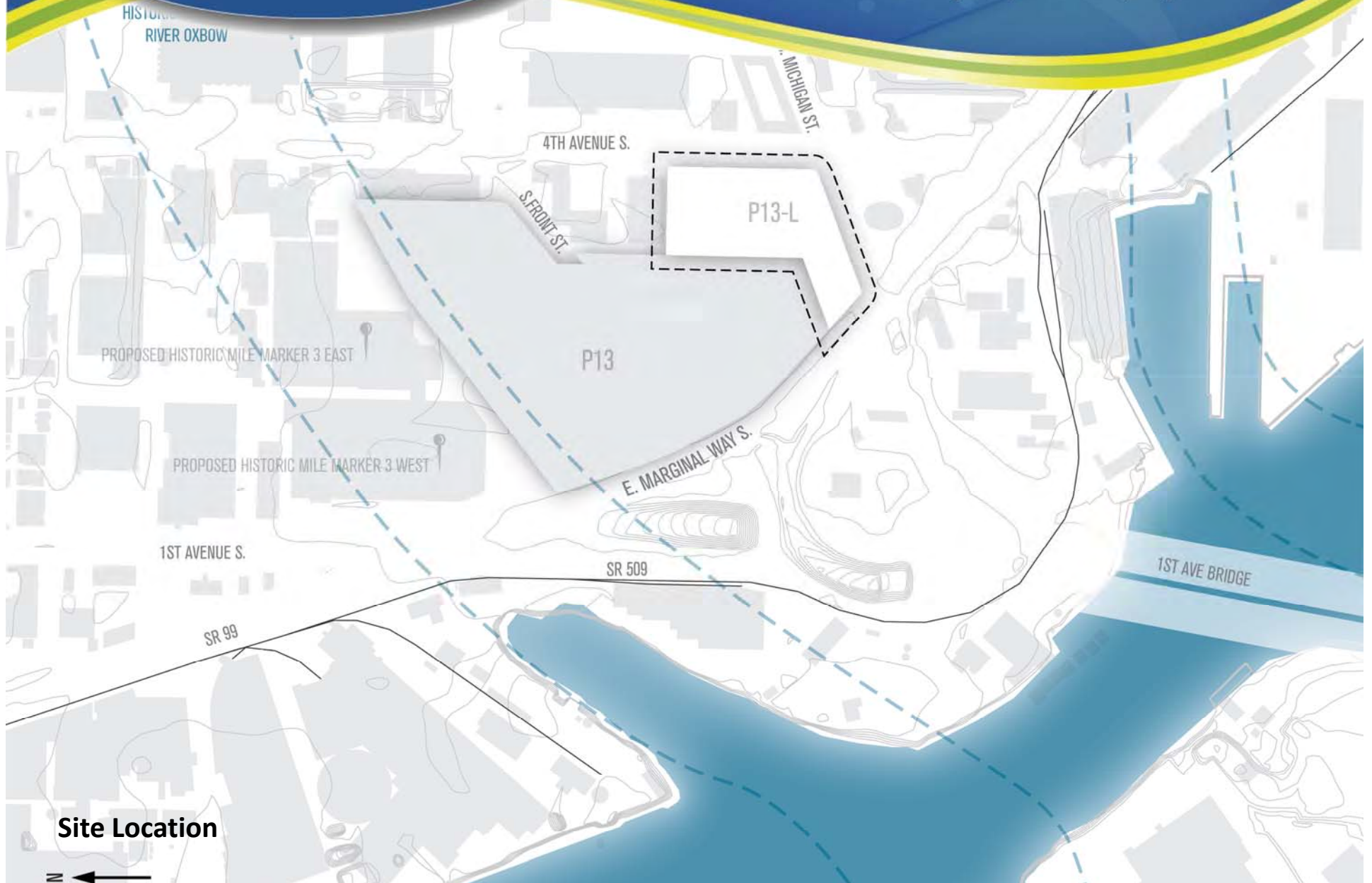
- Reflect the individual character of the neighborhood; from whimsical to hard working, industrial to residential, and hand made to natural systems.
- Enhance air and water quality while making both natural and treatment processes visible.
- Enhance the understanding of public wastewater infrastructure through education and employment opportunities.
- Balance the public and private spaces to meet the needs of the utility and the community.
- Acknowledge the place, history, color palette, and transformations over time in Georgetown.
- Humanize the design by expressing craft, grit, and elegance at all scales, resulting in a place of neighborhood pride.
- Create a facility that is environmentally and socially sustainable through conservation, efficiency and stewardship.
- Reflect the value of and connection to the Duwamish River and its benefits for the region.

Design Concepts

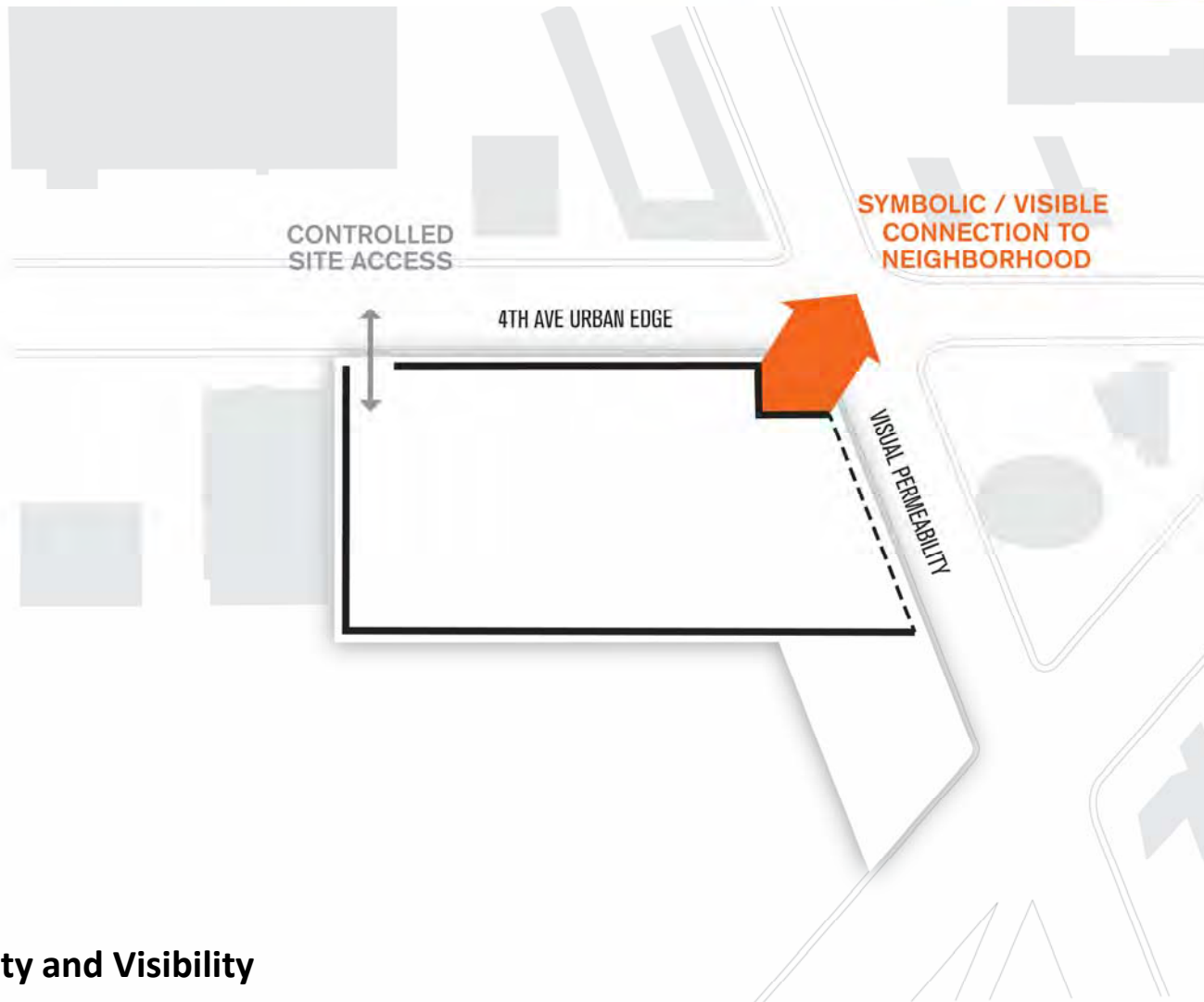
GEORGETOWN

Wet Weather Treatment Station

 King County
Protecting Our Waters
Doing our part on rainy days



Site Location

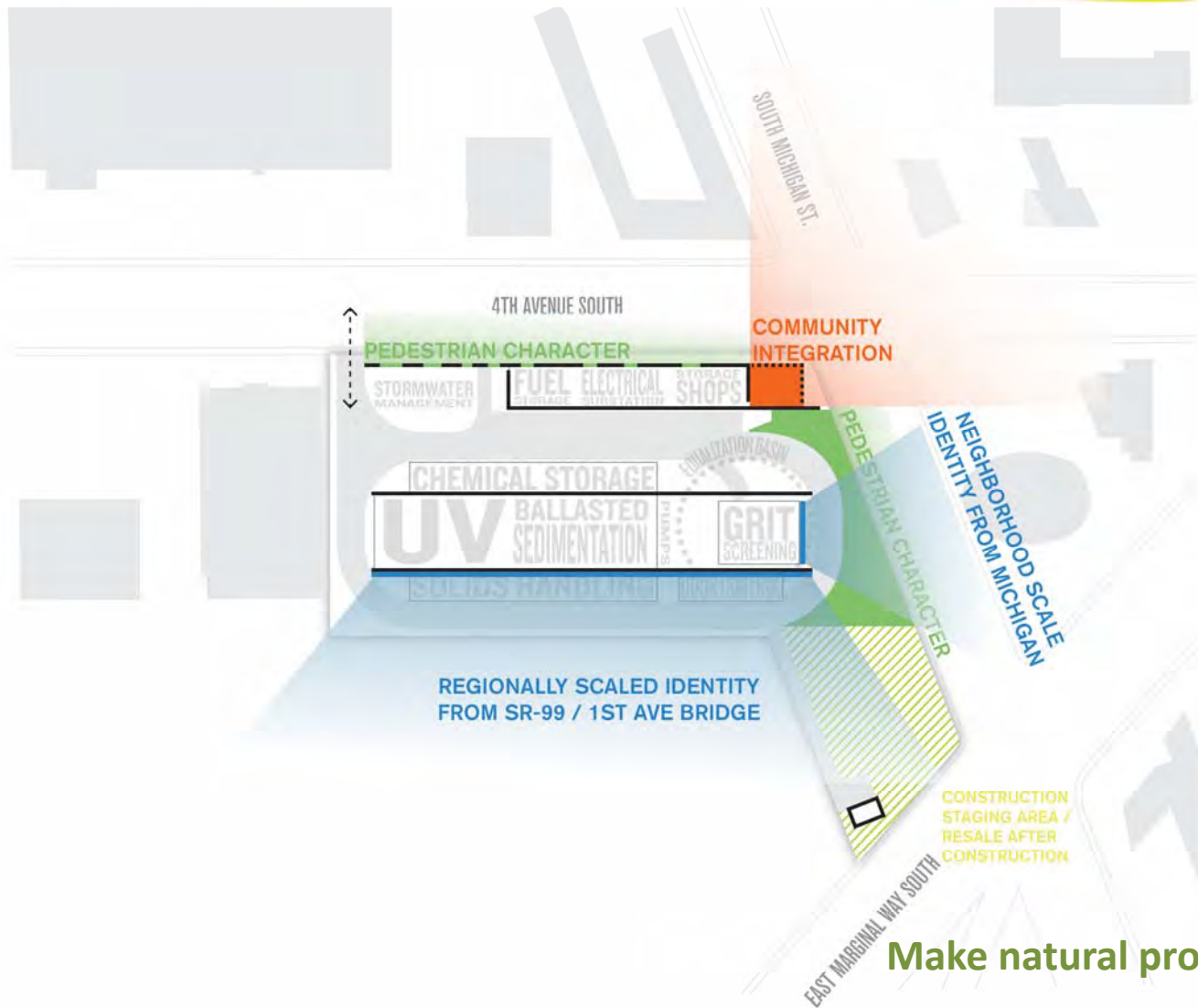


Permeability and Visibility

GEORGETOWN

Wet Weather Treatment Station

King County
Protecting Our Waters
Doing our part on rainy days



Make natural processes visible

GEORGETOWN
Wet Weather Treatment Station

 **King County**
Protecting Our Waters
Doing our part on rainy days



Acknowledge the place, history, and transformations over time



93 Eisenhüttenstadt, Brandenburg, D 1994



194 Rombas, Lorraine, F 1992

GEORGETOWN
Wet Weather Treatment Station



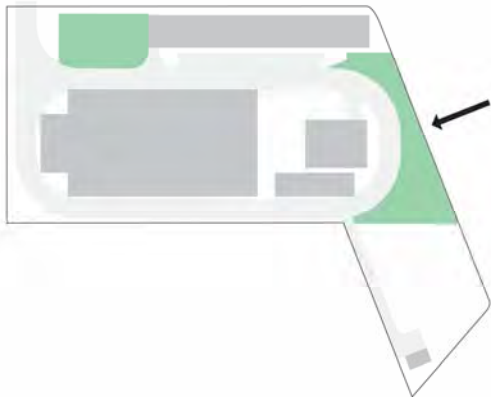
King County

Protecting Our Waters

Doing our part on rainy days



Make the treatment process visible



4th and Michigan

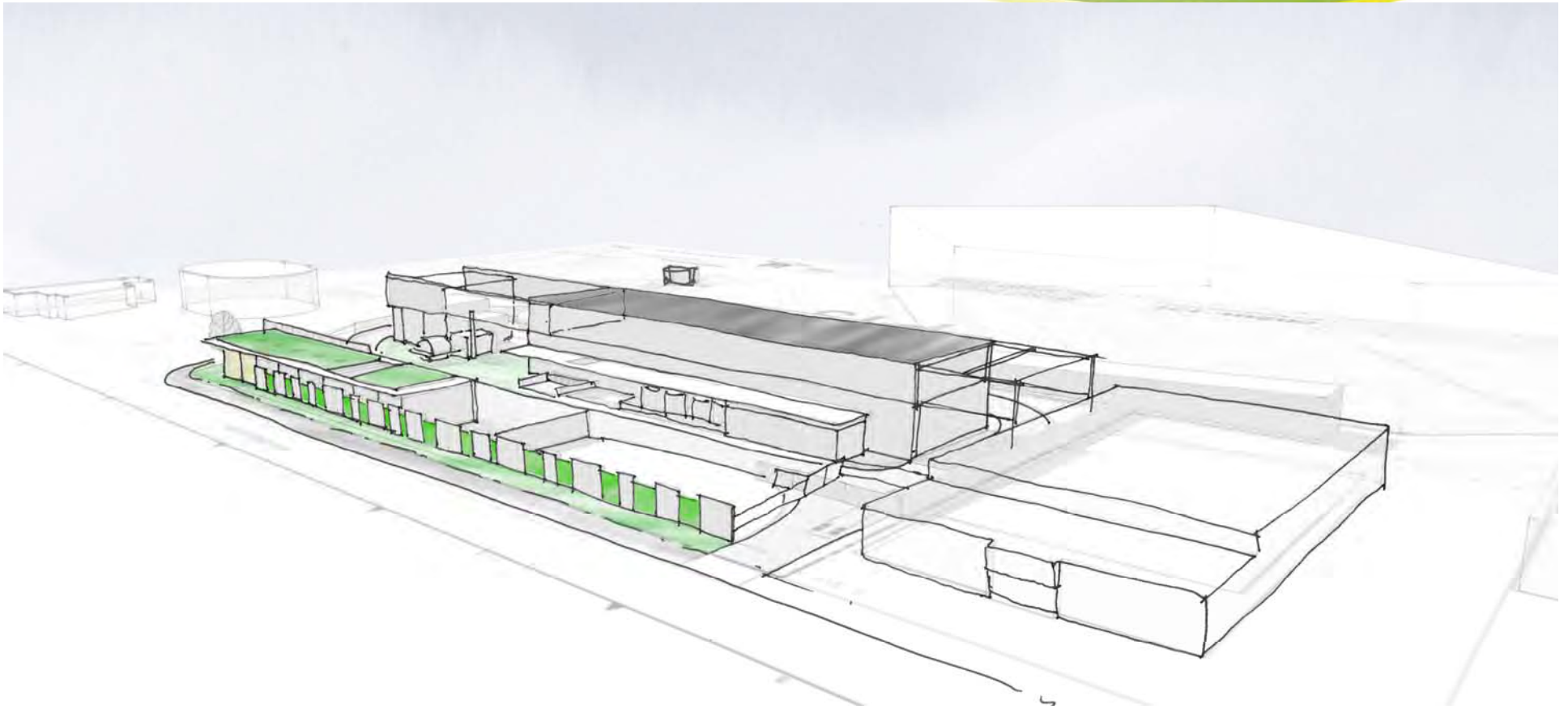
Balance the public and private spaces

GEORGETOWN
Wet Weather Treatment Station

 **King County**
Protecting Our Waters
Doing our part on rainy days



Humanize the design / accessible and inviting human interaction



NE Corner

Environmentally and socially sustainable

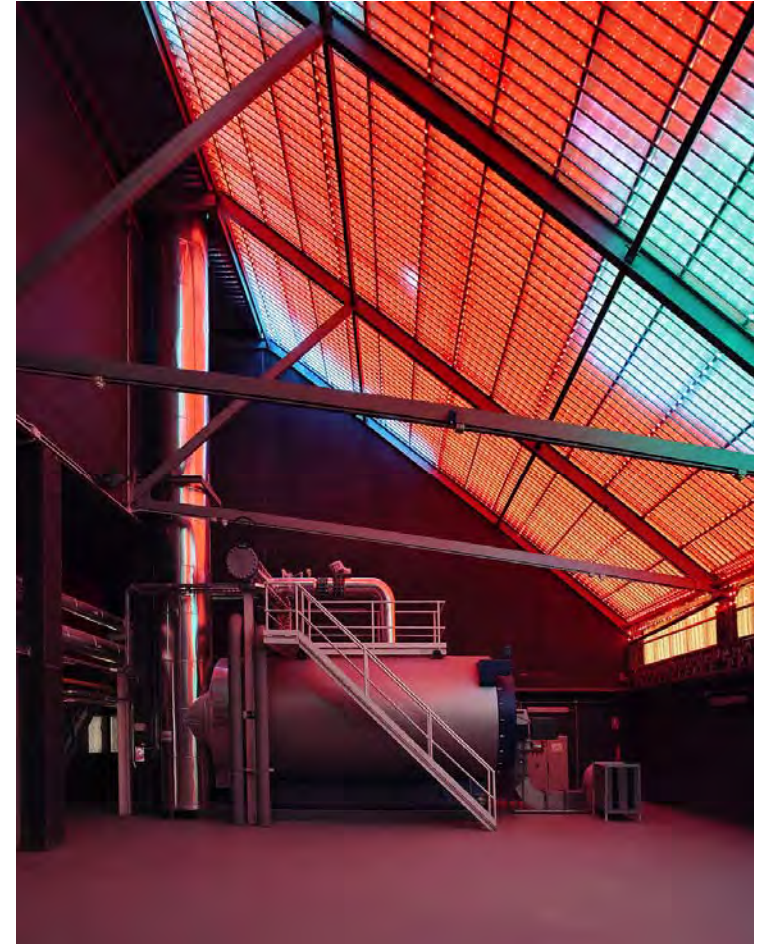


SW Corner

Enhance the understanding of public wastewater infrastructure

GEORGETOWN
Wet Weather Treatment Station

 King County
Protecting Our Waters
Doing our part on rainy days



Acknowledge the place, history, and color palette



4th and Michigan

Whimsical to hard working, industrial to residential, hand made to natural systems

GEORGETOWN
Wet Weather Treatment Station

 **King County**
Protecting Our Waters
Doing our part on rainy days



4th and Michigan

Whimsical to hard working, industrial to residential, hand made to natural systems

GEORGETOWN
Wet Weather Treatment Station

 **King County**
Protecting Our Waters
Doing our part on rainy days



Make the treatment process visible

GEORGETOWN

Wet Weather Treatment Station

 King County
Protecting Our Waters
Doing our part on rainy days



Environmentally sustainable

GEORGETOWN
Wet Weather Treatment Station

 **King County**
Protecting Our Waters
Doing our part on rainy days



Environmentally sustainable

GEORGETOWN

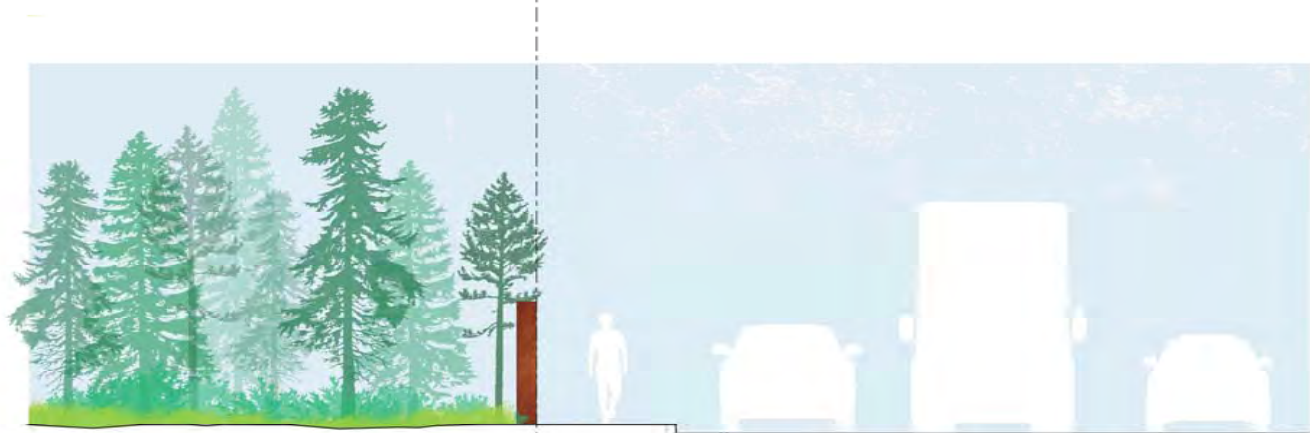
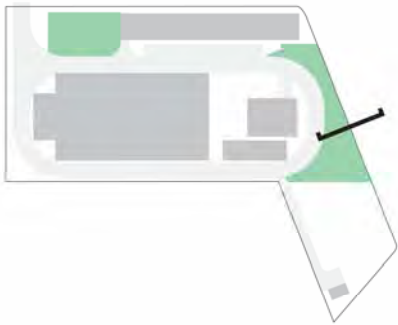
Wet Weather Treatment Station

King County
Protecting Our Waters
Doing our part on rainy days



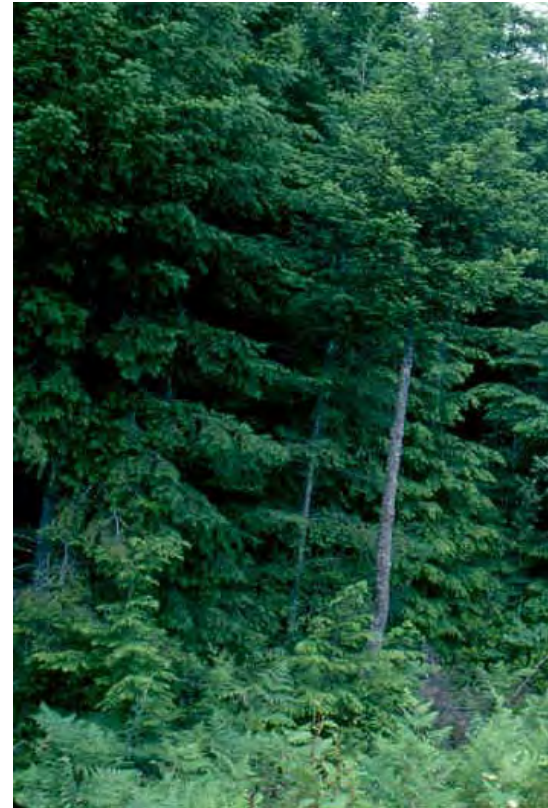
Option 1

Enhance air and water quality, make natural processes visible



FENCE/WALL AT
PROPERTY LINE

Enhance air and water quality, make natural processes visible



Enhance air and water quality, make natural processes visible

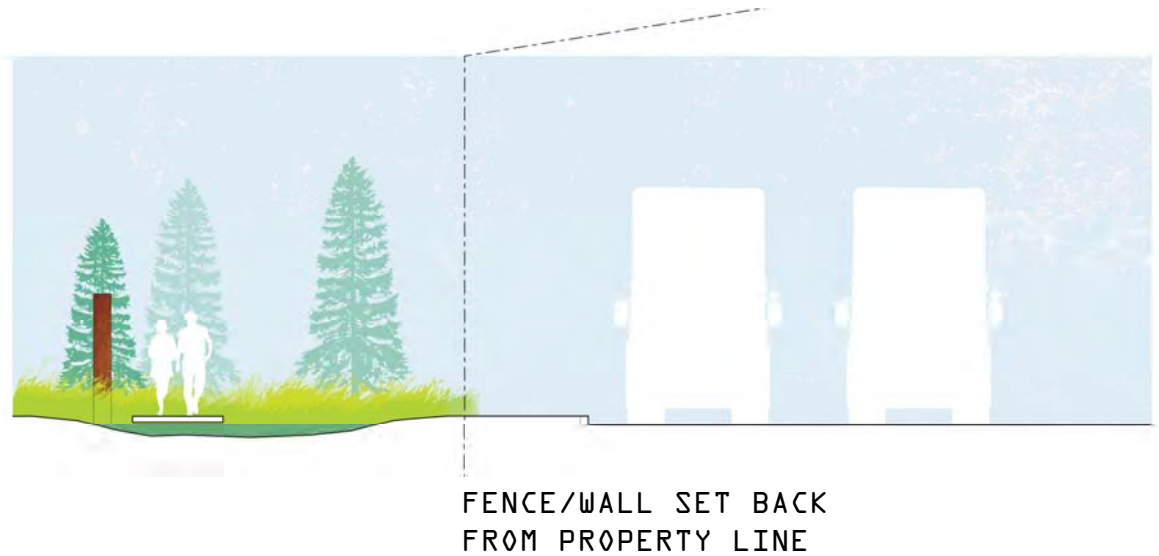
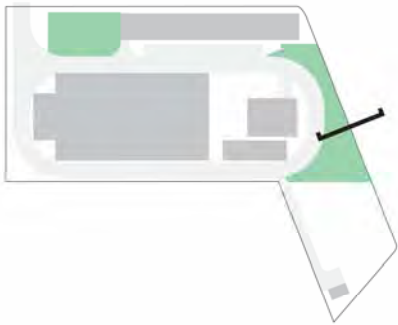
GEORGETOWN
Wet Weather Treatment Station

King County
Protecting Our Waters
Doing our part on rainy days



Option 2

Enhance air and water quality, make natural processes visible



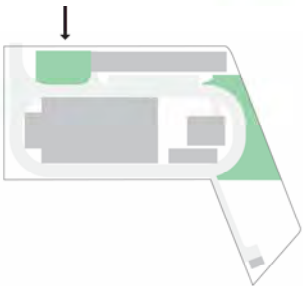
Enhance air and water quality, make natural processes visible

GEORGETOWN
Wet Weather Treatment Station

 **King County**
Protecting Our Waters
Doing our part on rainy days



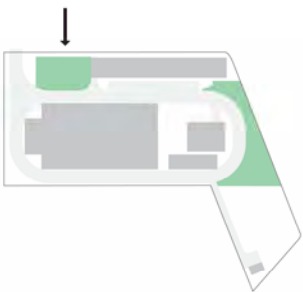
Enhance air and water quality, make natural processes visible



Reflect the individual character of the neighborhood



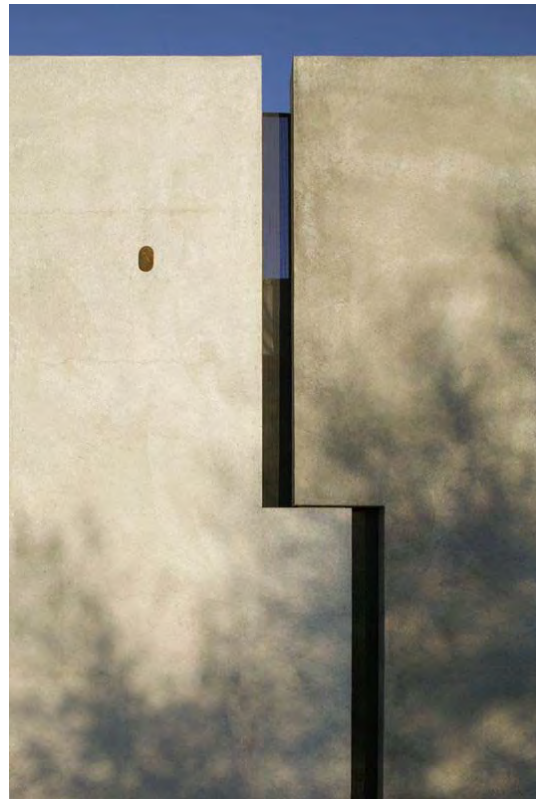
Reflect the individual character of the neighborhood



Reflect the individual character of the neighborhood

GEORGETOWN
Wet Weather Treatment Station

 **King County**
Protecting Our Waters
Doing our part on rainy days

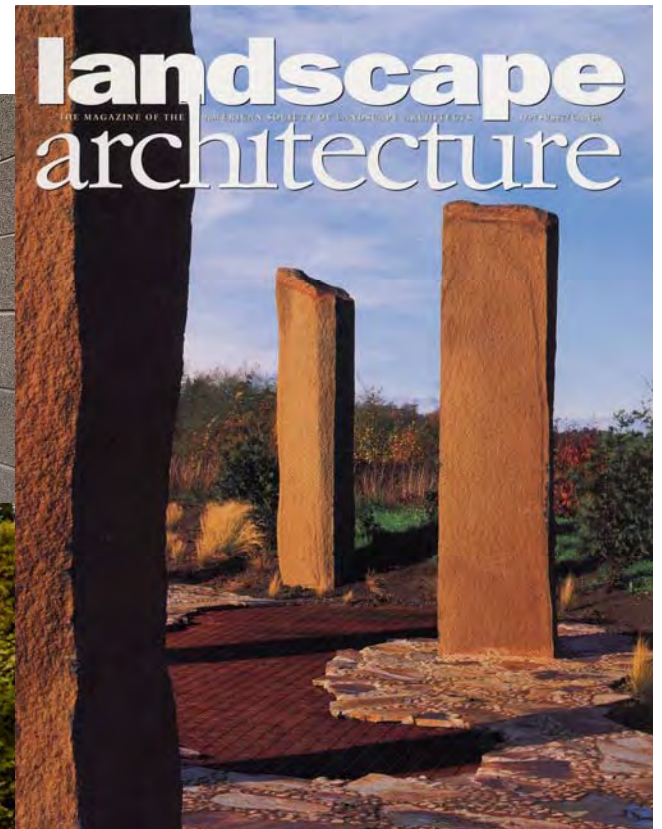


Reflect the individual character of the neighborhood

1% for Art Program

1% For Art Program

Managed by 4Culture, King County's cultural services provider.



1% For Art Program

1% of the cost of design and construction of above ground structures is used to support the public art program.

Public art in water utilities must meet specific legal criteria to:

- Reflect the core mission of the utility – to treat wastewater and recycle its byproducts.
- Serve an educational purpose.
- Benefit the facility, or be integral to the function of a facility.
- Beautify an employee workspace, customer service area, and increases employee productivity.
- Reside on WTD facility property.



1% For Art Program

- **4Culture's Public Art Advisory Committee (PAAC) is the decision-maker and final approval body for County-owned public art.**
- **Artists will be chosen by peer panels that will include neighborhood representatives.**
- **Lead planning artist team Sans Façon is already at work on a master plan for the CSO system.**

Arts Heritage Preservation Public Art Application Login

4 CULTURE Advancing Community through Culture

OPPORTUNITIES OUR PROGRAMS WHO WE ARE CONSULTING / RESOURCES

BLOG 4CULTURE: OUR LATEST NEWS

FEATURE STORIES / TOURISM
Gallery4Culture: Christopher Buening explores his Midwestern roots
by ESTHER LUTTIKHUIZEN on Jun 4, 2015 • No Comments

Christopher Buening: Hunter<Gatherer June 4 – 25, 2015 Opening: 1st Thursday, June 4, 6:00 – 8:00 pm
Gallery4Culture 101 Prefontaine PL S Seattle, WA 98104
Gallery4Culture is pleased to present artist Christopher Buening in Hunter<Gatherer, a compilation of mixed media installations that explore time, memory...

NEWS FROM 4CULTURE

ADVANCING COMMUNITY / EDUCATION / GUEST BLOGGERS / INNOVATION
Otieno Terry on Creative Justice
by JORDAN HOWLAND on Jun 17, 2015 • No Comments

Creative Justice is 4Culture's new arts-based alternative to incarceration for King County youth. Singer-songwriter, producer, and teaching artist, Otieno Terry, led the 2nd project session of our

UPCOMING DEADLINES
Collections Care 6/24
Open 4Culture ongoing

CREATIVE JUSTICE

JOIN EMAIL LIST

POETRY get your

- Calls for artists will be posted at www.4Culture.org
- King County and 4Culture are committed to keeping the Georgetown community informed of all opportunities to engage artists.

Upcoming Community Events & Meetings

- **Online Open House – June 22 – July 15**
- **Greater Duwamish District Council Meeting – June 24**
- **Georgetown Art Attack – July 11**
- **Georgetown Garden Walk – July 12**
- **Design Advisory Group Meeting #5 – July 30**

Thank You!

Questions?