

GEORGETOWN
Wet Weather Treatment Station



King County

Protecting Our Waters

Doing our part on rainy days

Design Advisory Group Meeting #7

Wednesday, October 26, 2016

6:00 p.m. – 8:00 p.m.

Agenda

- Community outreach update
- 60% design update
- DAG discussion
- Project next steps and thank you

Public Comment

Community Outreach Update

- Project-adjacent neighbor outreach
- Martin Court
- Community group briefings
- Summer outreach
 - Evening of Art + Water
 - Georgetown Garden Walk
 - Duwamish River Festival



Conceptual Design

Water Systems

Materials & Visible Processes

Community Edges



Fencing

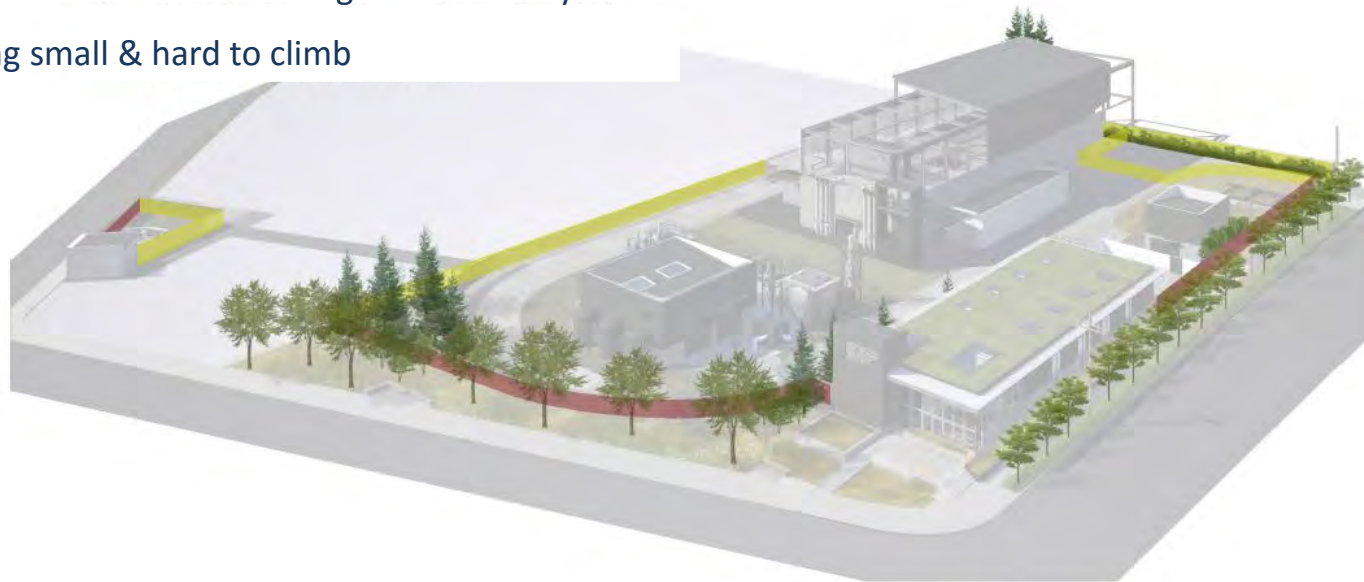
Utilitarian & neighborhood edge

Provide secure perimeter to the facility

Utilize building as fence at neighborhood edge

Allow the public to view the workings of the facility

Fence opening small & hard to climb

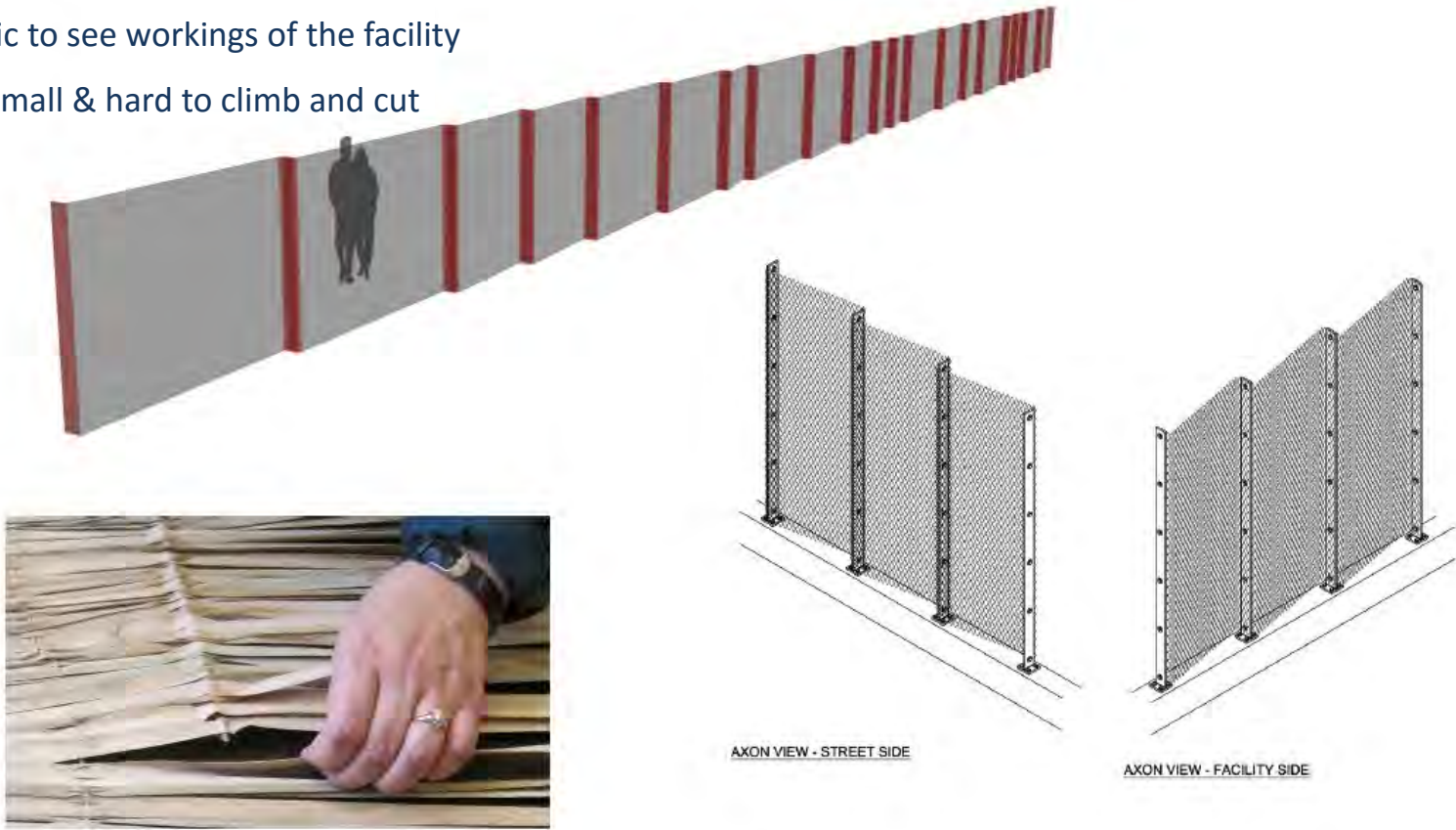


Fencing

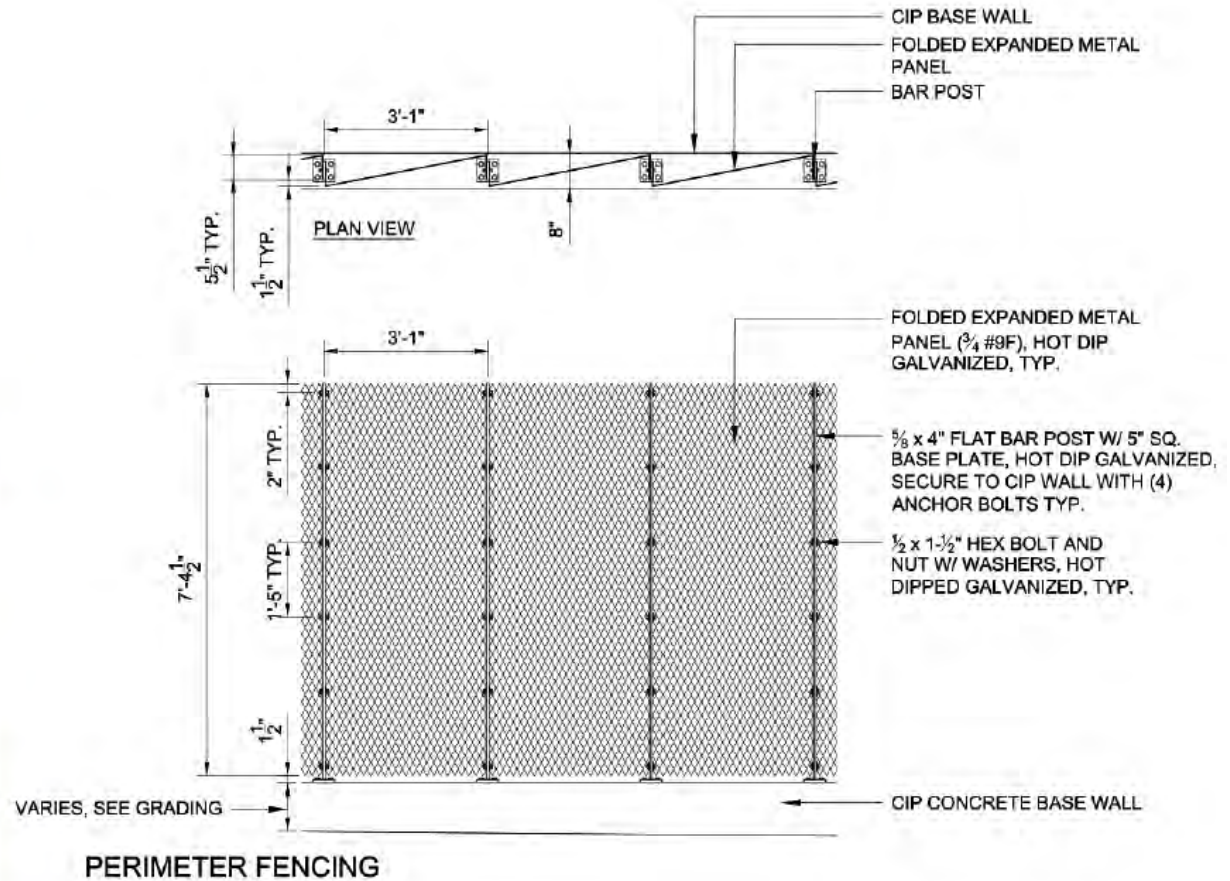
Provide secure perimeter

Allow public to see workings of the facility

Openings small & hard to climb and cut

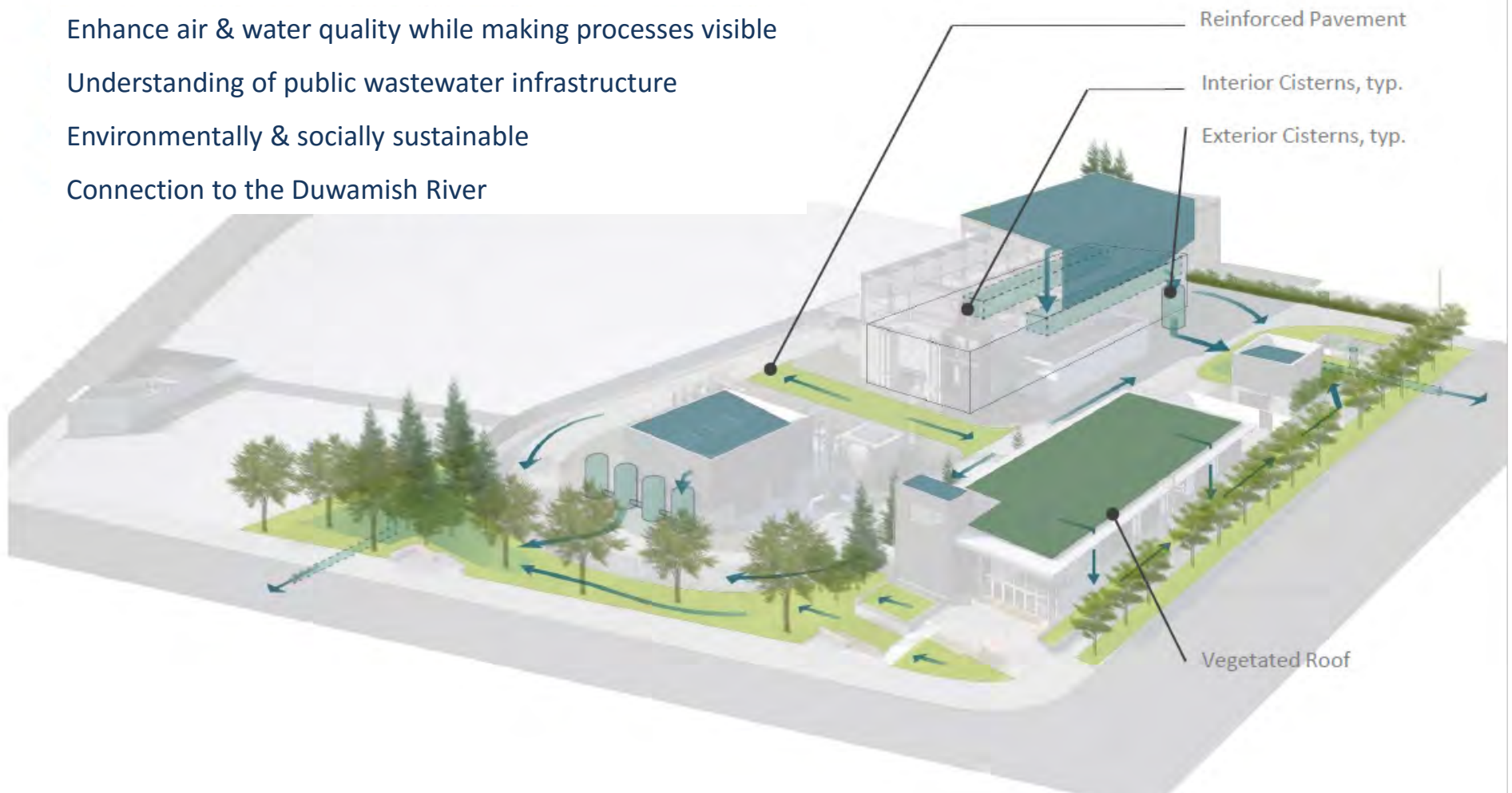


Fencing

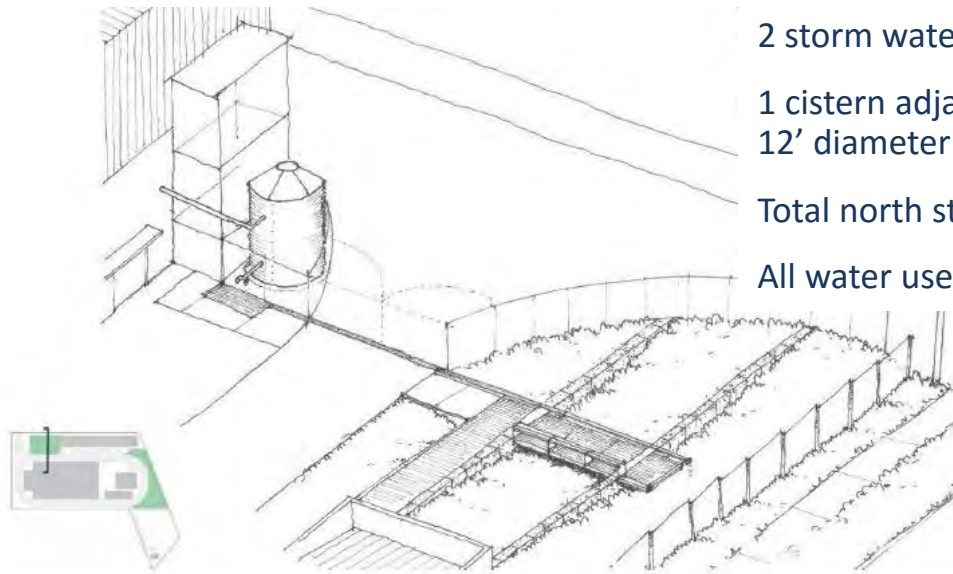


Surface Water Systems

- Enhance air & water quality while making processes visible
- Understanding of public wastewater infrastructure
- Environmentally & socially sustainable
- Connection to the Duwamish River



North Bioretention & Rainwater Capturing



2 storm water vaults cast into the UV structure – 35,500 gal.

1 cistern adjacent to UV structure – 15,000 gallons, measuring 12' diameter x 18' tall

Total north storm water storage volume – 50,500 gallons

All water used for irrigation



Planting typologies

Enhance air & water quality while making processes visible

Understanding of public wastewater infrastructure

Environmentally & socially sustainable

Connection to the Duwamish River



Planting – Bioretention North

Massings
Zone 2



Sisyrinchium idahoense
Idaho Blue-eyed Grass

Groupings
Zone 2



Camassia leichtlinii
Great Camas

Zone 3



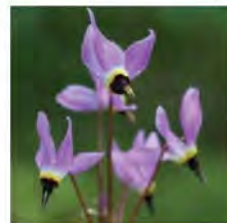
Echinacea purpurea
Purple Coneflower

N Zone 1



Scirpus microcarpus
Panicked Bulrush

N



Dodecatheon hendersonii
Shooting Star

N



Achillea millefolium
Yarrow

N Zone 3



Carex obnupta
Slough Sedge

A



Iris sibirica
Siberian Iris

A



Allium atropurpureum
Flowering Onion

Zone 3



Juncus patens 'Elk Blue'
Elk Blue California Gray
Rush

Shrubs



Amelanchier alnifolia
Serviceberry

A



Balsamorhiza deltoidea
Deltoid Balsamroot

Bands
Zone 1



Carex buchananii
Leatherleaf Sedge

N



Ribes sanguineum
Flowering Red Currant

N

Planting – Bioretention South

Massings



Eleocharis palustris
Creeping Spike Rush



Juncus ensifolius
Swordleaf Rush



Deschampsia cespitosa
Tufted Hairgrass

Bands



Carex testacea
Orange New Zealand
Sedge



Molinia caerulea
'Moorflamme'
Purple Moor Grass

Groupings



Camassia quamash
Camas



Iris tenax
Oregon Iris



Allium cernuum
Nodding Onion



Rudbeckia fulgida
var
sullivantii 'Goldsturm'
Black-eyed Susan



Lupinus polyphyllus
Large-leafed Lupin



Achillea millefolium
'Paprika'
'Paprika' Yarrow



Brodiaea hyacinthina
Fool's Onion



Aquilegia formosa
Western Columbine

N - native
A - adaptive

Planting – Understory



Manzanita



Oregon grape



Dwarf red twig dogwood



Ocean spray



Red flowering currant



Salal



Nootka rose



Goats beard



Thimbleberry



Evergreen huckleberry



Tufted hairgrass



Romers fescue



Hydrangea



Honeysuckle



Wood fern



Robust fern



Sword fern



Longleaf oregon grape



Strawberry



Kinnickinick



Yarrow

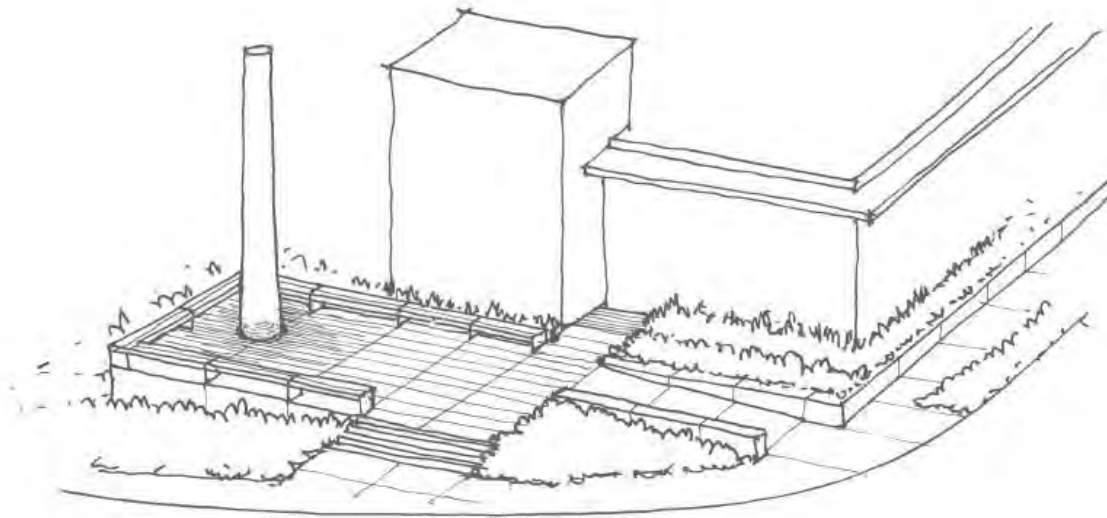
Plaza Concept

OVERVIEW PLAN



Public Art Integration

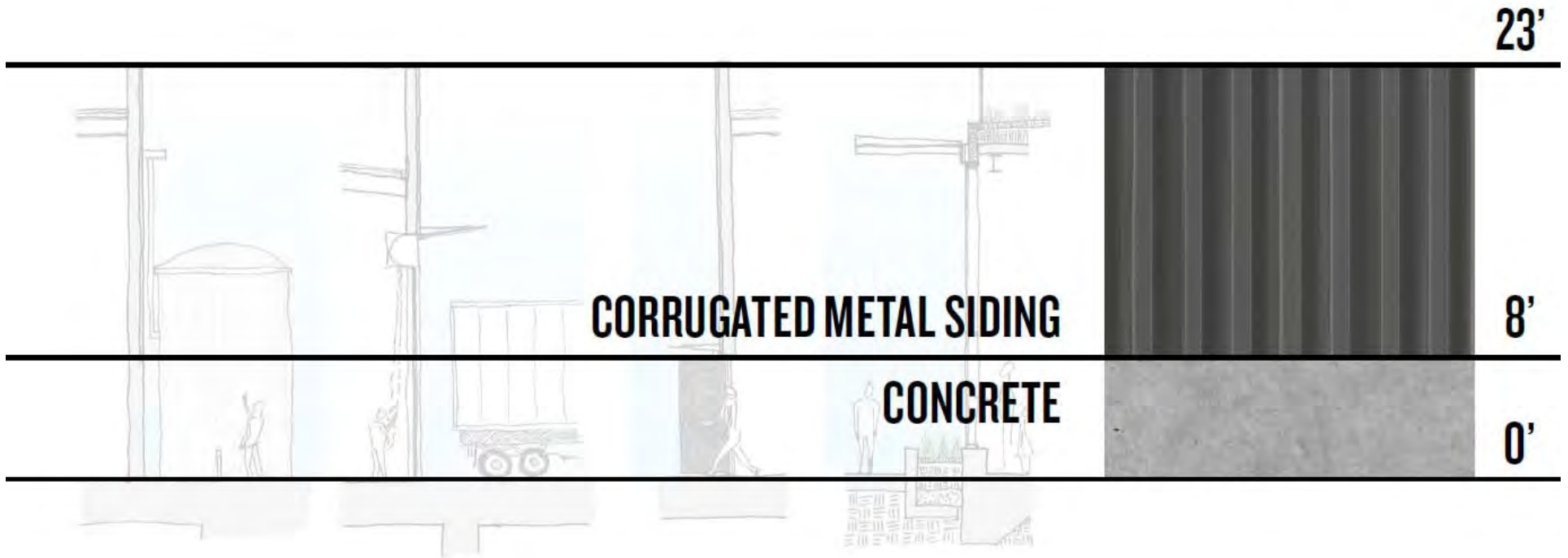
VIGNETTE LOOKING NORTHWEST



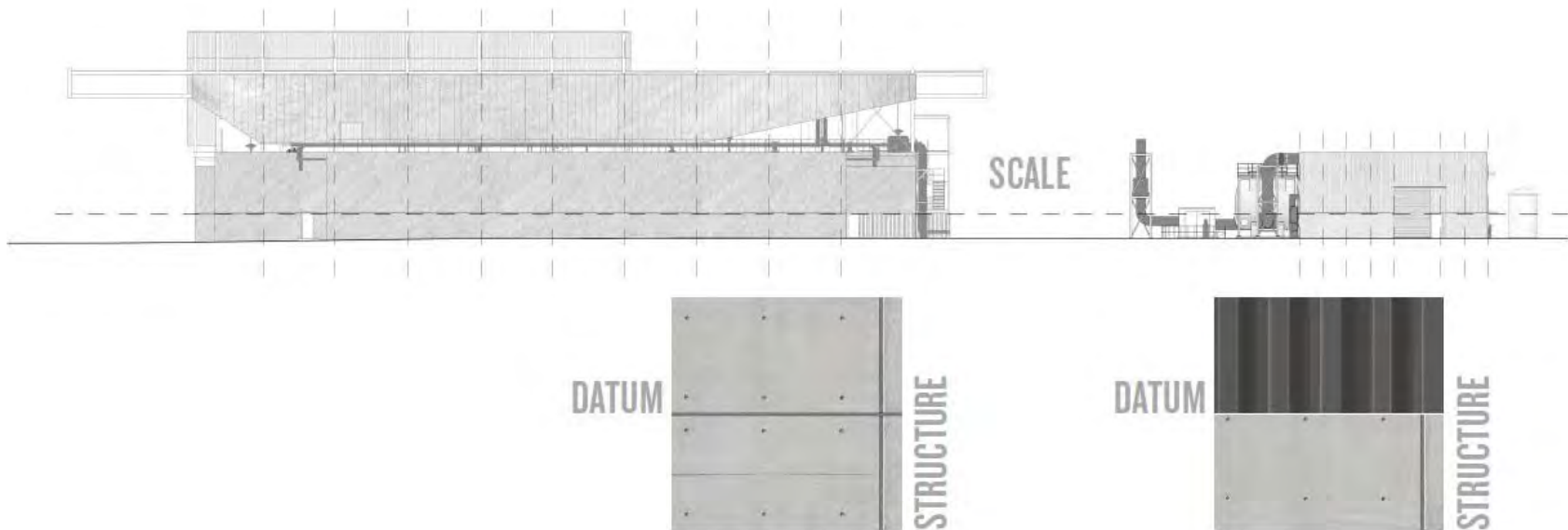
Character Imagery



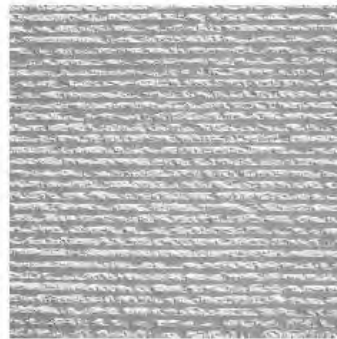
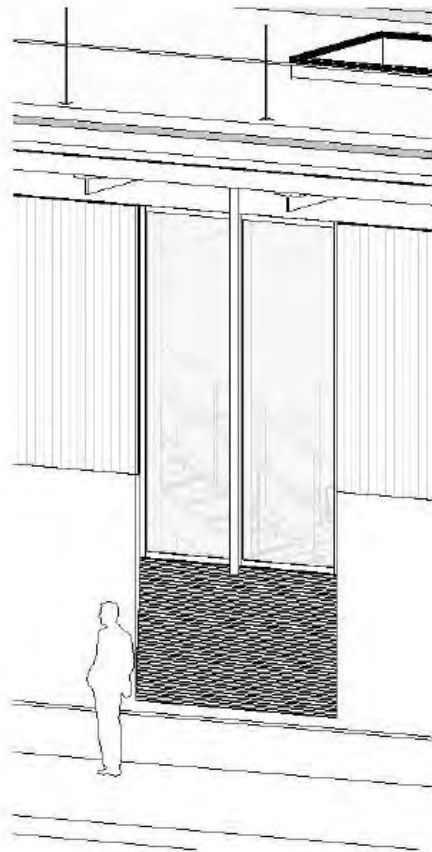
Operations and Maintenance Exterior



Concrete Articulation



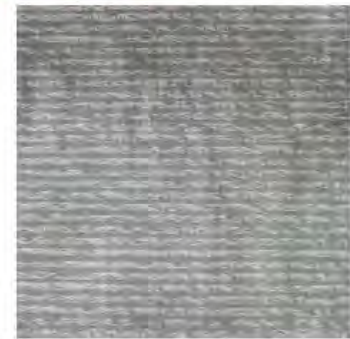
Rain Wall



SURFACE



WATER



EFFECT

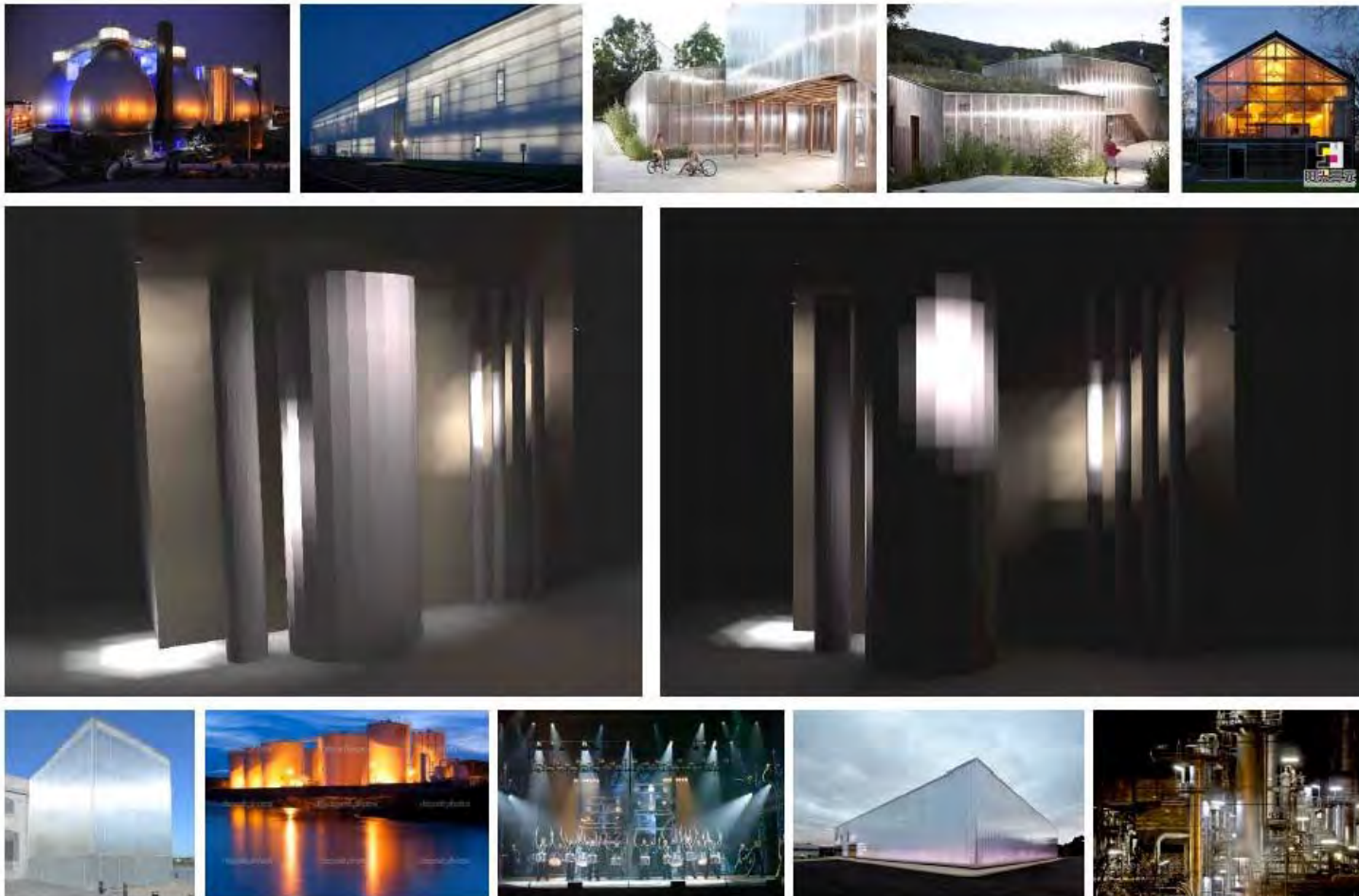
Site Lighting



COLOUR TEMPERATURE CHART

1800K Match flame	1800K 10000K	
1930K Favorite flame	3500K Quartz lights	7500K City overcast
2800K Normal indoor	5400K Soft bright & clear	8000K Midway between warm & cool
3000K Tungsten lamp 300W - 10W	6500K Sun through clouds	10000K Purely steady day

Site Lighting

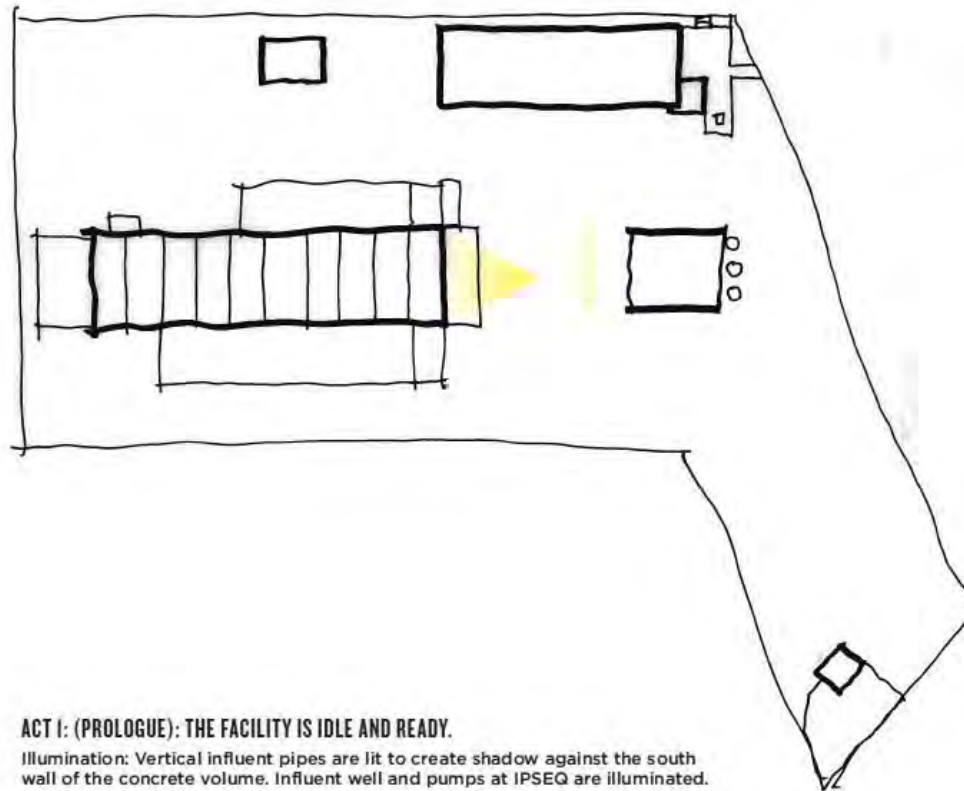


Building Lighting



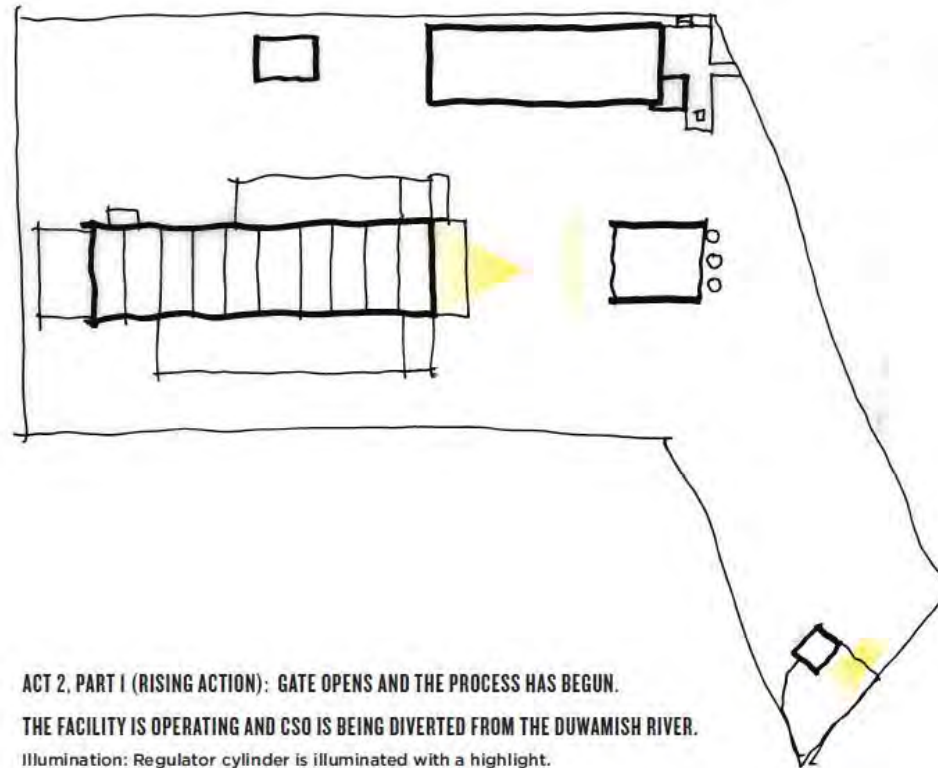
Theater of a Storm

SITE LIGHTING



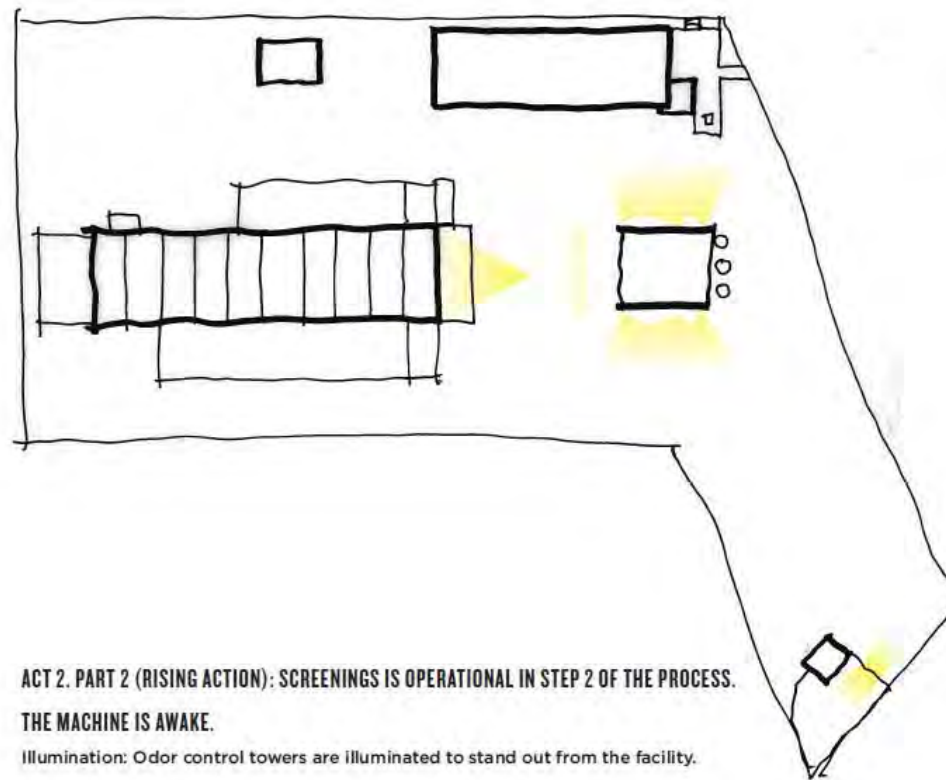
Theater of a Storm

SITE LIGHTING



Theater of a Storm

SITE LIGHTING

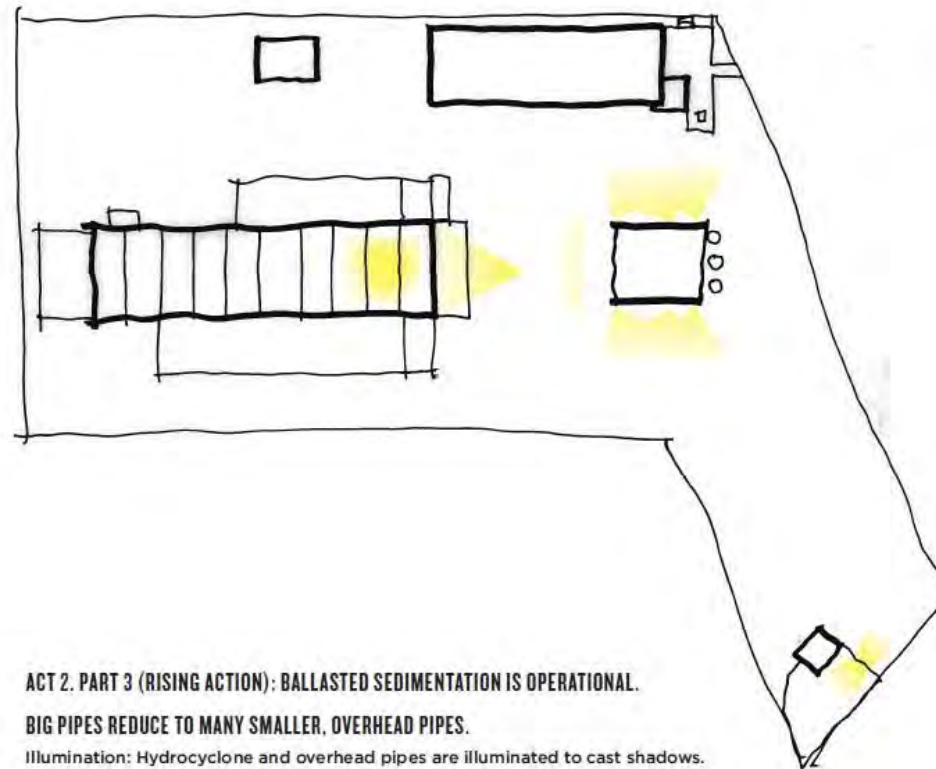


**ACT 2. PART 2 (RISING ACTION): SCREENINGS IS OPERATIONAL IN STEP 2 OF THE PROCESS.
THE MACHINE IS AWAKE.**

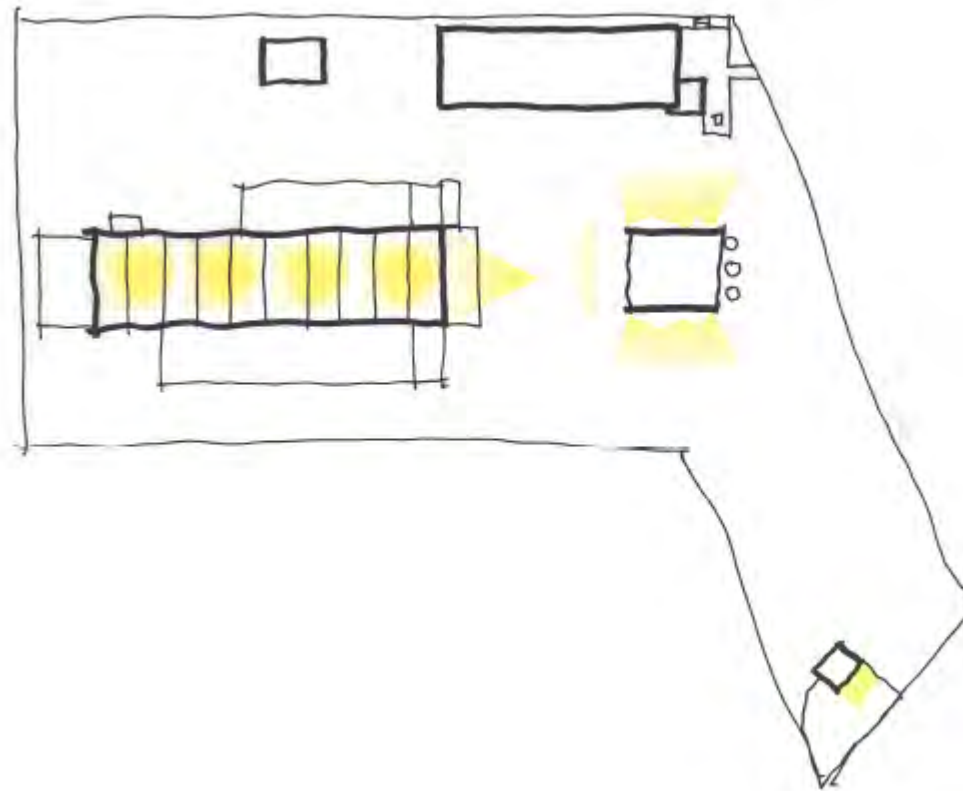
Illumination: Odor control towers are illuminated to stand out from the facility.

Theater of a Storm

SITE LIGHTING

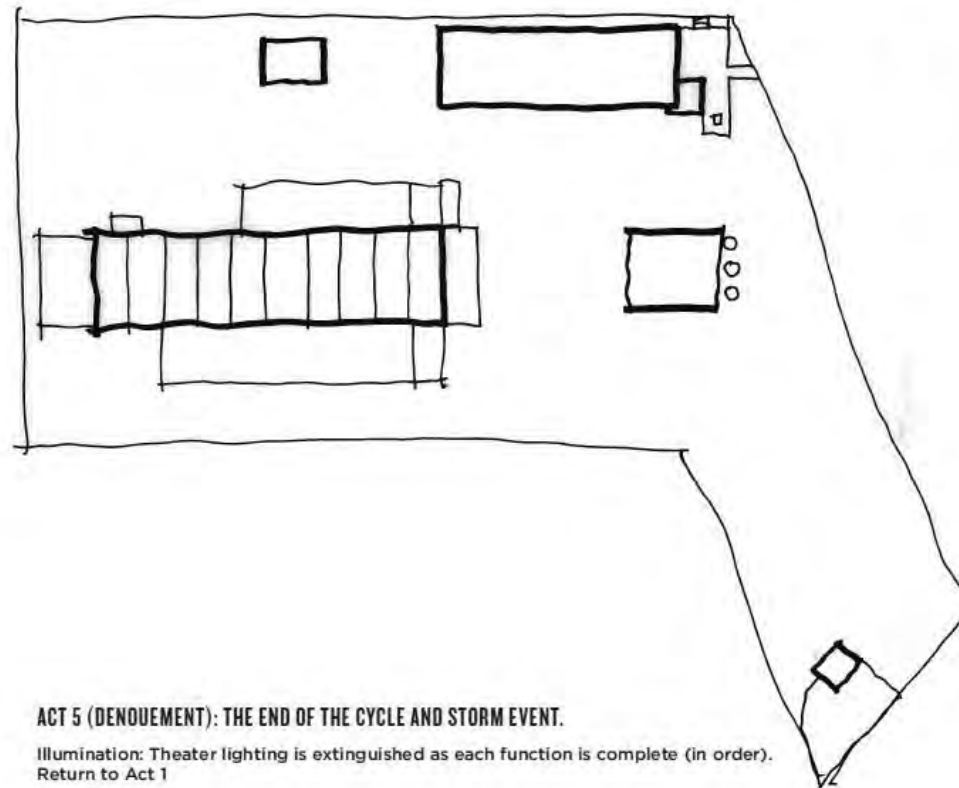


Theater of a Storm

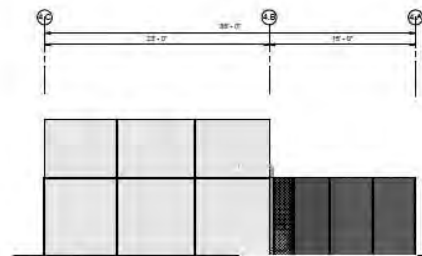
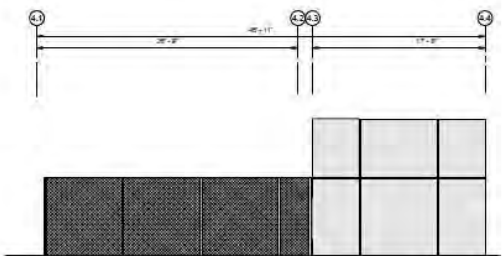
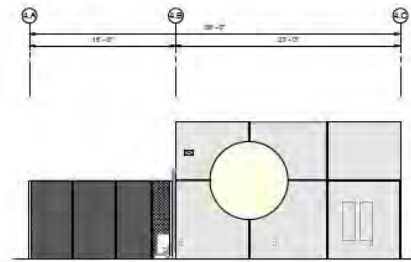
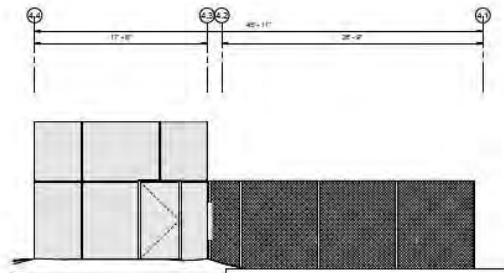


Theater of a Storm

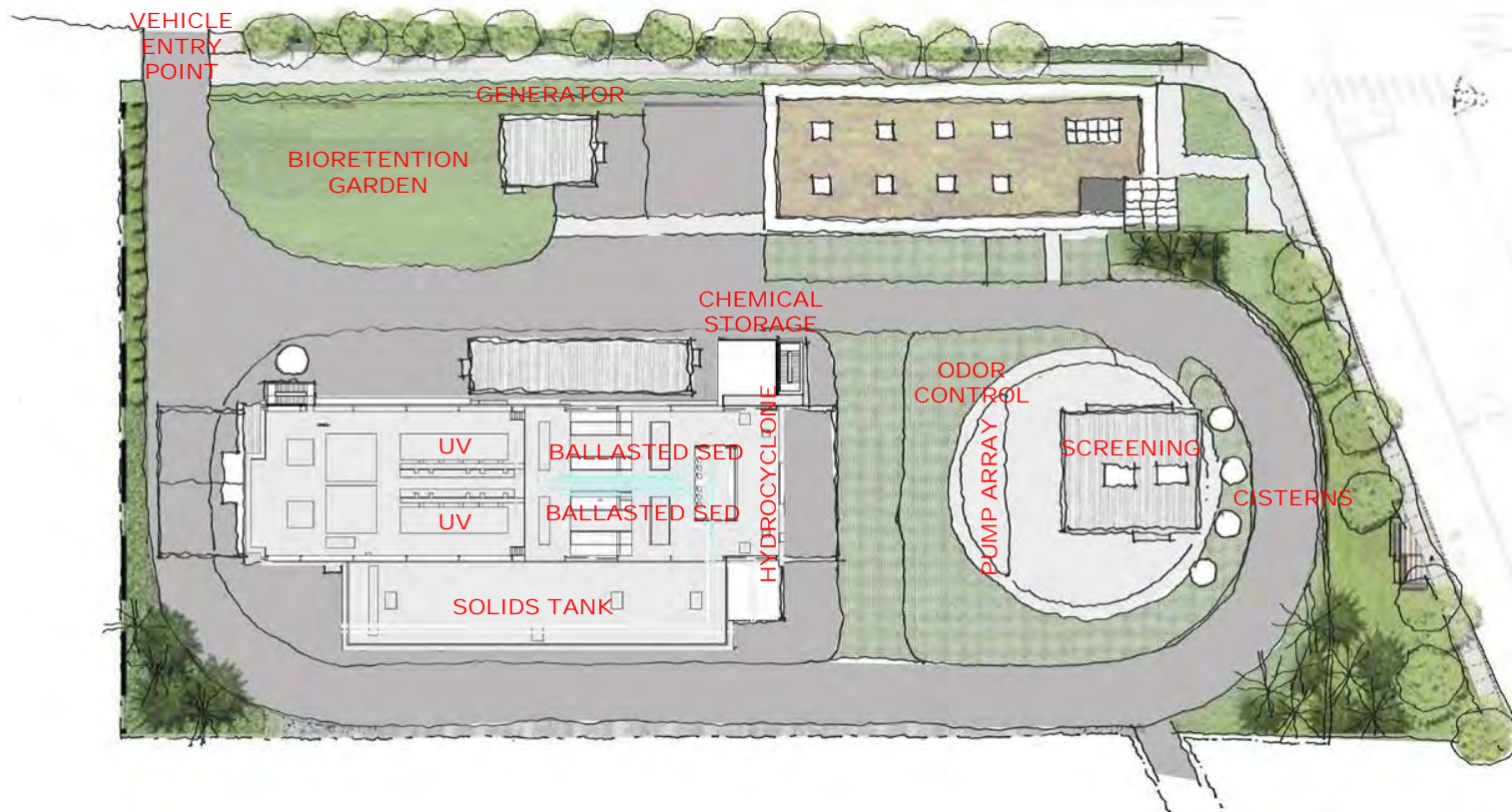
SITE LIGHTING



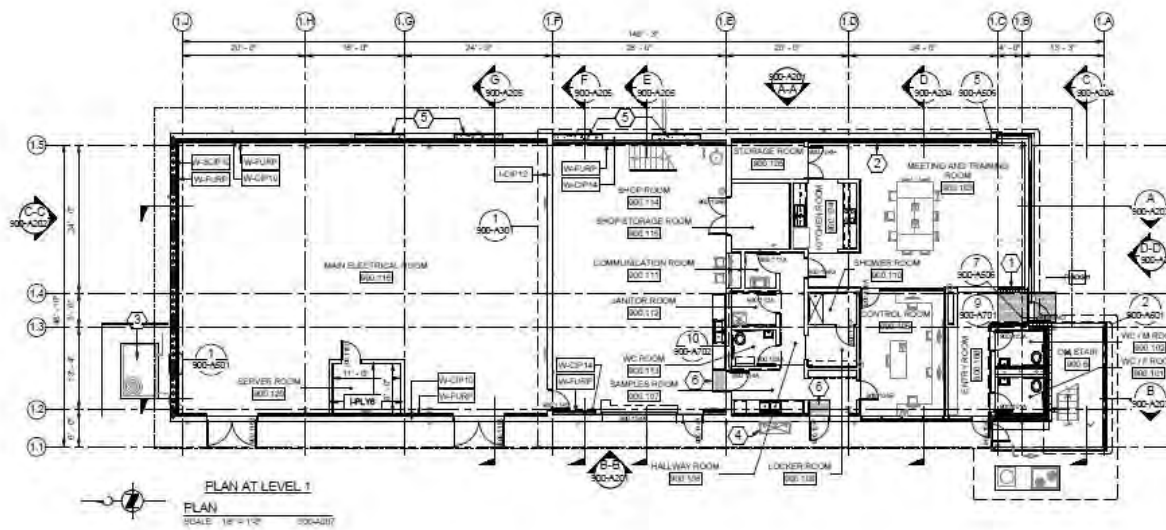
Regulator Exterior



Education



Meeting/Training Room



- GENERAL NOTES**
- 1 FOR SCHEMATIC LOCATION OF LOANERS AND EQUIPMENT SEE MECHANICAL.
 - 2 SEE LANDSCAPE AND CIVIL FOR SITE DETAILS.
 - 3 WALL ASSEMBLY SOUTH OF FORELINE 1:2 SLOPE (ON SHEET 300-AS01)
- SET NOTES**
- 1 RECLAIMED WOOD SCREEN
 - 2 GLASS MARKER BOARD
 - 3 EQUIPMENT PAD
 - 4 STAINLESS STEEL (SUS 316) REF. PLUMBING
 - 5 BOARDFORM CONCRETE (H&H)
 - 6 WALK OFF MAT

Meeting/Training Room



EDUCATION



OPERATIONS

Community Partnerships

- WaterWorks grant
- Green wall
- Georgetown Open Space Visioning process

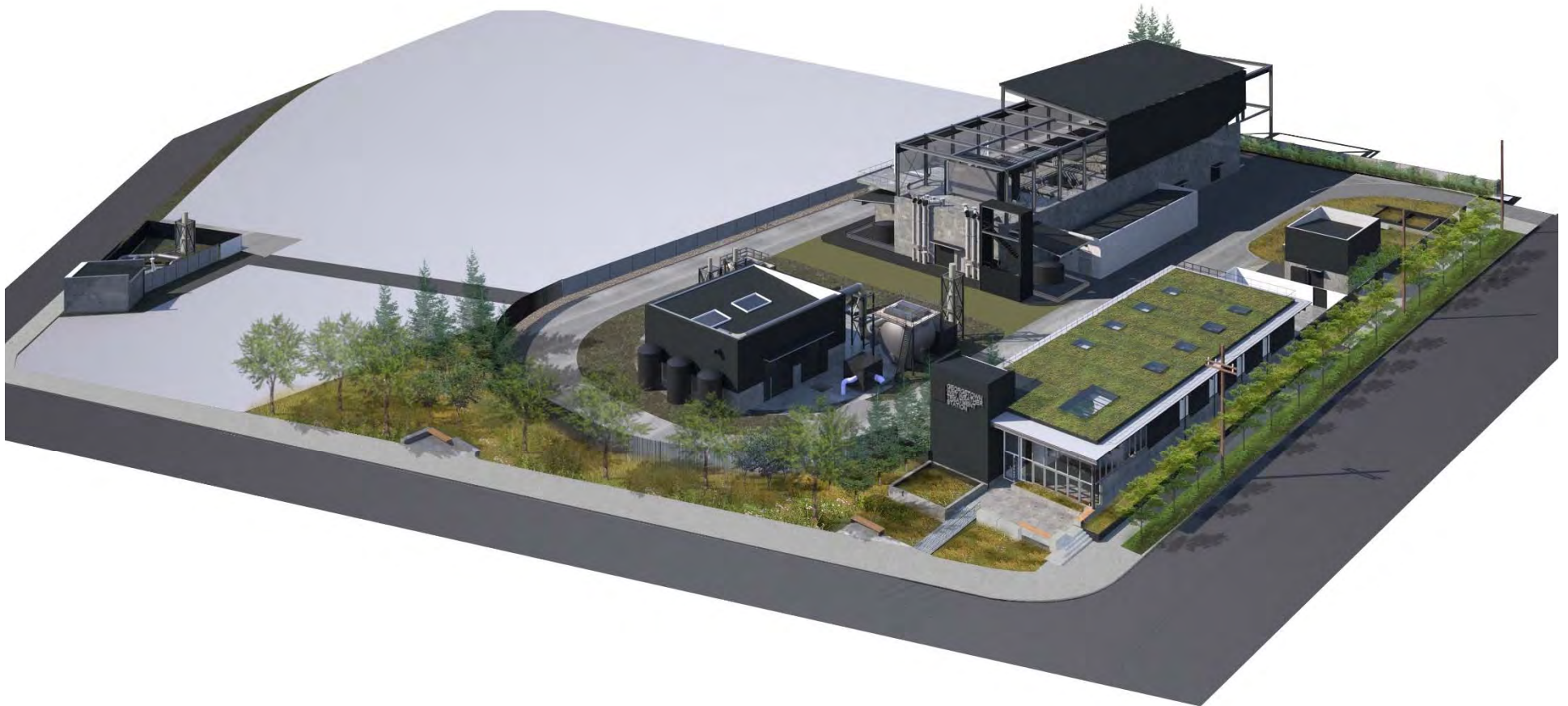


Community Partnerships

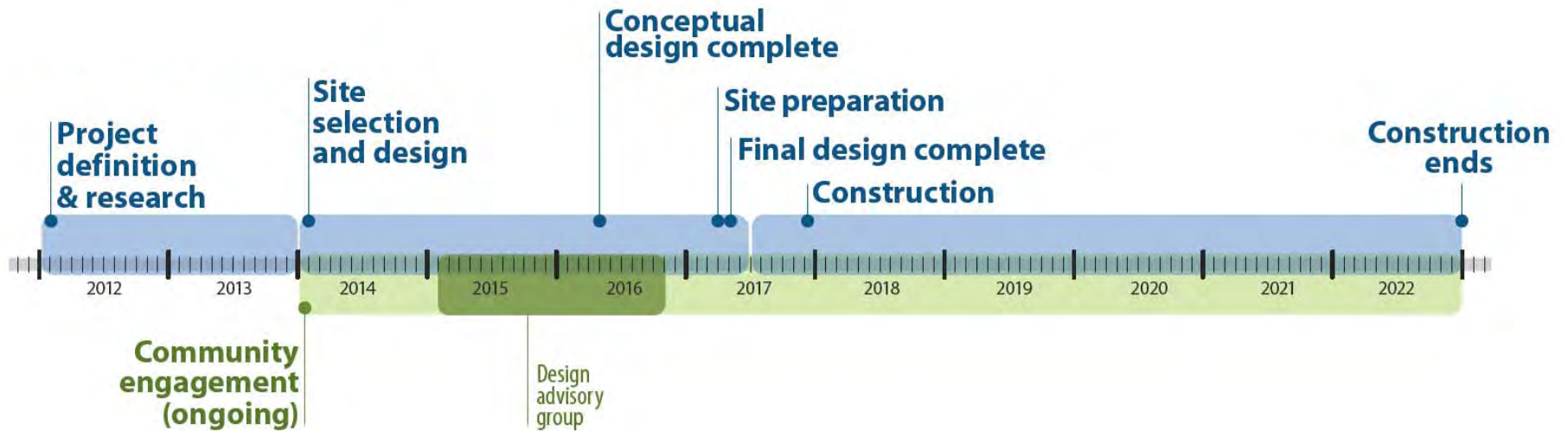
- Carleton Grocery rain garden and cisterns
- Equity and Social Justice Action Plan update



DAG Discussion



Project Schedule



Project Next Steps

- **January:** Project newsletter
- **February – April:** Construction preparation and outreach
- **April:** 90% design and additional outreach
- **On-going:** Equity and Social Justice Action Plan and community partnerships and outreach

Public Comment

GEORGETOWN
Wet Weather Treatment Station



King County

Protecting Our Waters

Doing our part on rainy days

Thank you!

For questions or comments, please contact:

Kristine Cramer

206-477-5415

kristine.cramer@kingcounty.gov

www.kingcounty.gov/georgetownWWTS