

Construction Update

July 6, 2018

## Construction activities begin at King County's outfall site

King County and its contractor, Pacific Pile & Marine, have mobilized crews onto the project site under the First Avenue South Bridge. Over the next few weeks, crews will continue to bring equipment onsite and begin outfall construction.

Crews will also complete a variety of activities, including:

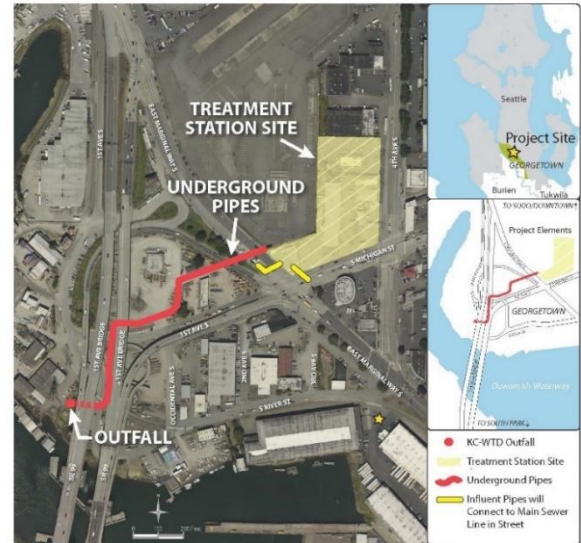
- Surveying
- Potholing to locate underground utilities by drilling shallow holes on site
- Establishing Best Management Practices along the shoreline to prevent silty water from entering the Duwamish Waterway
- Installing vibration monitors

Starting as early as the week of July 9 crews will begin to install steel sheet pile shoring. This will keep the excavation safe during pipe installation and construction of the Outfall Drop Structure.

The sheet piles will be installed using a vibratory hammer. **Increased noise and vibration levels are expected as the sheet piles are installed.** Crews will be monitoring noise and vibration levels to minimize disruption to the extent possible. **This work will occur intermittently through December.** View King County's [video on our website](#) to learn more and see a video example of this work.

### What to expect during construction:

- Large trucks and equipment moving in and out of the project area underneath the First Avenue South Bridge
- Work on or near roadways, including on South River Street and First Avenue South; there may be traffic impacts as equipment moves in and out of the site
- Increased noise and vibrations
- Night time surveillance while equipment is present onsite
- Hotline staffed 24/7



**Be ready! Sign up for email updates about construction progress** by visiting our project website: [www.kingcounty.gov/GeorgetownWWTS](http://www.kingcounty.gov/GeorgetownWWTS)

Moving forward, flyers may not regularly be hand-delivered to your door.

**King County will work with the community every step of the way.** We have a 24-hour construction hotline (206-205-9286).

**For more information:**

Visit the project website: [www.kingcounty.gov/GeorgetownWWTS](http://www.kingcounty.gov/GeorgetownWWTS)  
24/7 Project hotline: 206-205-9286  
SMS updates: Text "King GeorgetownWWTS" to 468311  
Contact Bibiana Ocheke-Ameh:  
[Bibiana.Ocheke-Ameh@kingcounty.gov](mailto:Bibiana.Ocheke-Ameh@kingcounty.gov)