

Construction Update

January 2020

Georgetown Wet Weather Station January Update

King County's Wastewater Treatment Division (WTD) is building a new wet weather treatment station in Georgetown, at the corner of Fourth Avenue South and South Michigan Street. WTD is also building a new outfall structure under the First Avenue South Bridge and connecting pipes from the station to the outfall. Read below for updates, recent highlights, and information about upcoming work.

Take a look at construction progress!

We continue to post construction photos and videos for each active construction site on the Flickr pages linked below. Updates are posted monthly with information about construction activities. We share videos in our email updates as well to give a peak into what crews are doing around the sites.

[Treatment Station Photos](#)

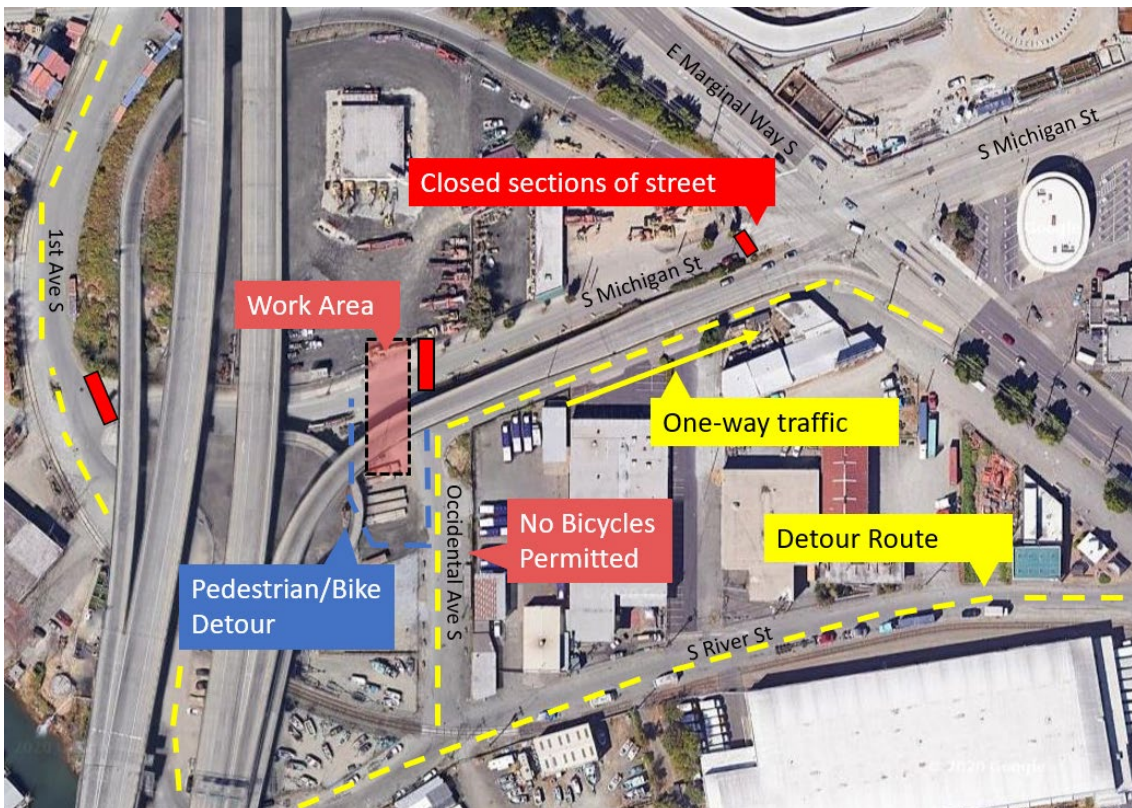
[Outfall Structure Photos](#)

[Conveyance Pipeline Photos](#)

Conveyance

Crews will begin work in the road on South Michigan Street as soon as the first week of February.

A portion of South Michigan Street will be closed to continue installing conveyance pipes. The street will be closed 24/7 but work hours are weekdays from 7 a.m. – 5 p.m. until completed.



There are detour routes for cars, bicycles, and pedestrians (see map). Temporary ADA ramps will be installed for the pedestrian detour route. **Cyclists cannot travel on Occidental Avenue South** and should use the detour route using South River Street and First Avenue South. **Work will continue into the spring.**

A flagger and traffic control signs will be around the site to direct people through the area safely.

Traffic conditions have changed around the project sites over the past month.

- As of December 17th, the southbound onboard ramp to SR-99 at the corner of East Marginal Way South and South Michigan Street opened.
- On December 23rd, bus routes 131 and 132 resumed normal service. The bus stop located on Fourth Avenue South and South Michigan Street is re-opened.
- As soon as the last week of January, South River Street underneath the First Avenue Bridge will be open for traffic and pedestrian access.

Treatment Station

As you may recall, in June of 2017, [King County and 4Culture](#) announced a call for artists to create artwork for seven different CSO sites across King County. For the Georgetown treatment station project, the CSO Master Plan artist designed an art to serve as “a monument to rain.”

We are excited to announce that work on the monument to rain is officially underway! Crews have excavated and laid rebar for the rain monument. We anticipate completing concrete wall pours within the next month.

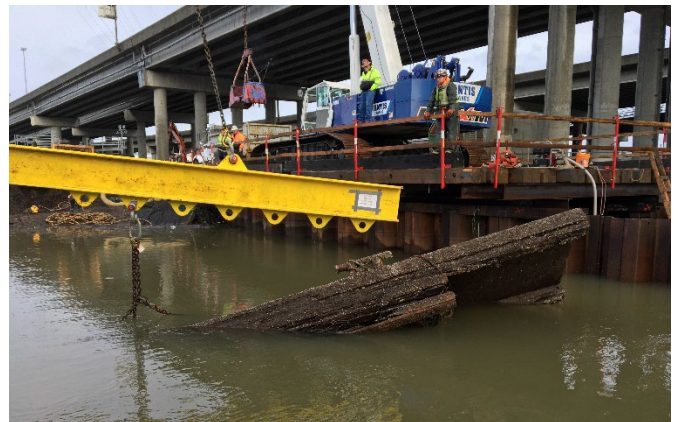
During heavy rainfall, the station will work to clean the stormwater coming in. When complete, the monument to rain art will operate (light up) and respond with all rain events. The monument acts as a signal for the frequency or lack of rain. This will serve as a reminder of the importance of helping to make the Duwamish River cleaner for the health and well-being of our region.

Outfall

Outfall construction is wrapping up this year!

This past month, crews successfully removed the final sections of the sunken dock. In-water work is expected to be completed in February with landscape restoration work to follow and continue into the spring. Restoration will include native plants and logs to stabilize the shoreline and improve wildlife habitat.

Click here <https://youtu.be/H02Zs-yCRCI> to watch divers completing in-water work and the barge leaving the outfall site!



Crews remove a section of the sunken dock at the outfall site.

What to expect during construction:

- 24/7 road closure on a portion of South Michigan Street with detour routes. Work occurs during weekdays from 7 a.m. – 5 p.m.
- Project team available by request to brief and update community groups, business owners, and residents about construction activities and next steps for construction
- Noise and vibrations typical of construction
- Security fencing and erosion and sediment control around the project sites
- Active 24/7 construction hotline: 206-205-9286

Visit the project website: www.kingcounty.gov/GeorgetownWWTS

Call: 24/7 Project hotline at 206-205-9286

Text: “King GeorgetownWWTS” to 468311

Email: Bibiana.Ocheke-Ameh@kingcounty.gov

Alternative Formats Available: 206-477-5371 / TTY Relay: 711