

Project Update

April 2022

Weekend lane closures extended through May 8

Expect temporary lane closures while crews form and pour curbs and sidewalks on East Marginal Way and South Michigan Street.

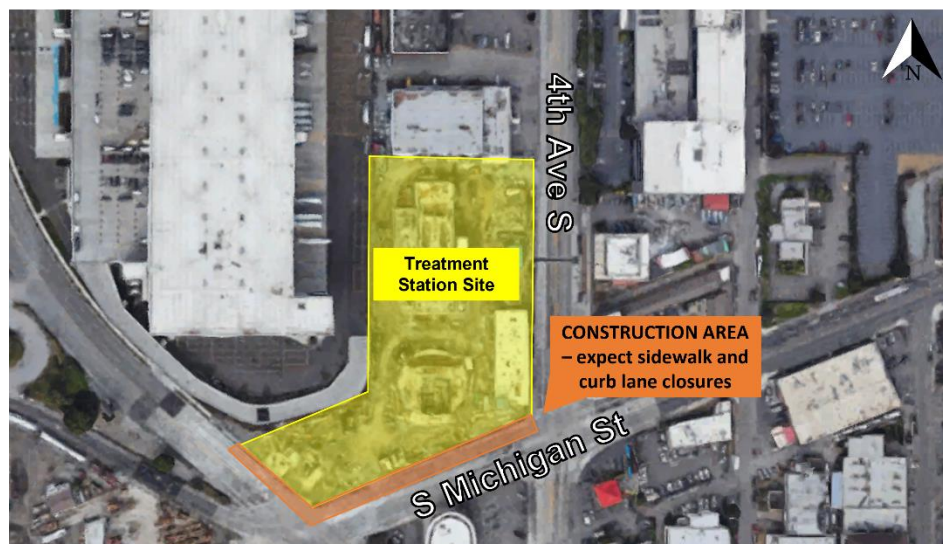
King County crews will close a lane of traffic on East Marginal Way and South Michigan Street over the next couple of weekends to complete curb and sidewalk installation near the new wet weather treatment station in Georgetown. As part of this work, crews will demolish existing concrete to prepare for curbs/sidewalk installation. After the install, crews will allow curbs and sidewalks to dry before removing forms and traffic control.

Crews will also restore a roadway panel on S. Michigan St. that was previously demolished to make connections to the new treatment station site.

To keep people traveling near the work area safe during this time, the sidewalk will be closed 24/7 until a new sidewalk has been installed.

What to expect:

- Sidewalks and lane closure dates: April 29 – May 2; May 6 – 9 (see map below).
- Work hours are from 7 p.m. to 6 a.m.
- People walking will be redirected around the closure.
- Noise and vibrations typical of construction.
- Project team will be available by phone to respond to questions about construction activities.
- Please pay attention to signage and flaggers for your safety and the safety of our crews.



Alternative Formats Available
206-477-5371 / TTY Relay: 711

Progress at the Treatment Station:

Construction of the treatment station continues. Much of the work is taking place inside the new station buildings where crews are finalizing connections to utilities like gas, heat, water and electricity. Outside, crews are paving walkways, sidewalks, and drivable areas. They are also getting the landscaping areas ready for planting.

Did you know?

At the beginning of the project, King County set a goal to divert 85 percent of the waste from construction and demolition of the Georgetown Wet Weather Treatment Station from the landfill. Throughout the project we have tracked how much we are able to divert to meet our goals. One of the unique items King County was able to salvage during demolition was wooden beams made from old growth timbers which are no longer made.



Crews form and pour new concrete on 4th Avenue South.



Old growth timbers salvaged during demolition.

Visit the project website: www.kingcounty.gov/GeorgetownWWTS

Call: Project hotline from 8 a.m.– 5p.m., Monday through Friday at 206-205-9286

Text: “King GeorgetownWWTS” to 468311

Email: Bibiana.Ocheke-Ameh@kingcounty.gov