

King County

Lake Hills and NW Lake Sammamish Sewer Upgrade Project

Friends of Marymoor Park Briefing

April 27, 2016

Agenda

- Upgrading and updating regional sewer service in Redmond
- What you will see:
 - Upcoming field work
 - Construction
- How we work with project communities
- Questions, discussion

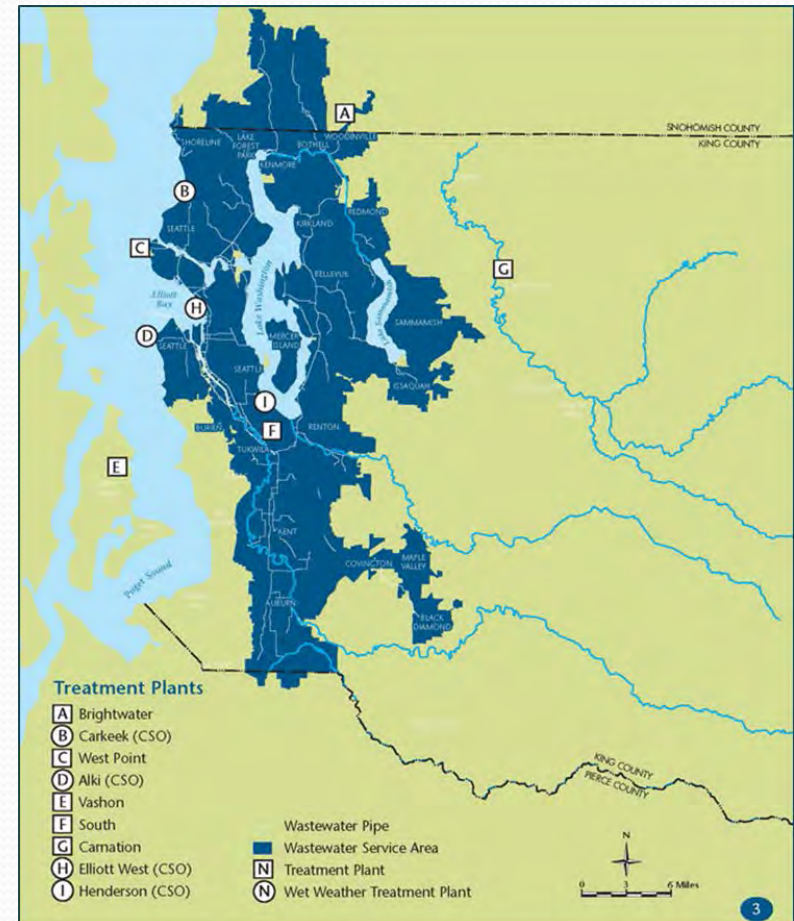
Who we are: King County WTD



In the last 50 years, treating the area's wastewater has transformed Lake Washington into one of the cleanest urban lakes in the world.

We serve our region

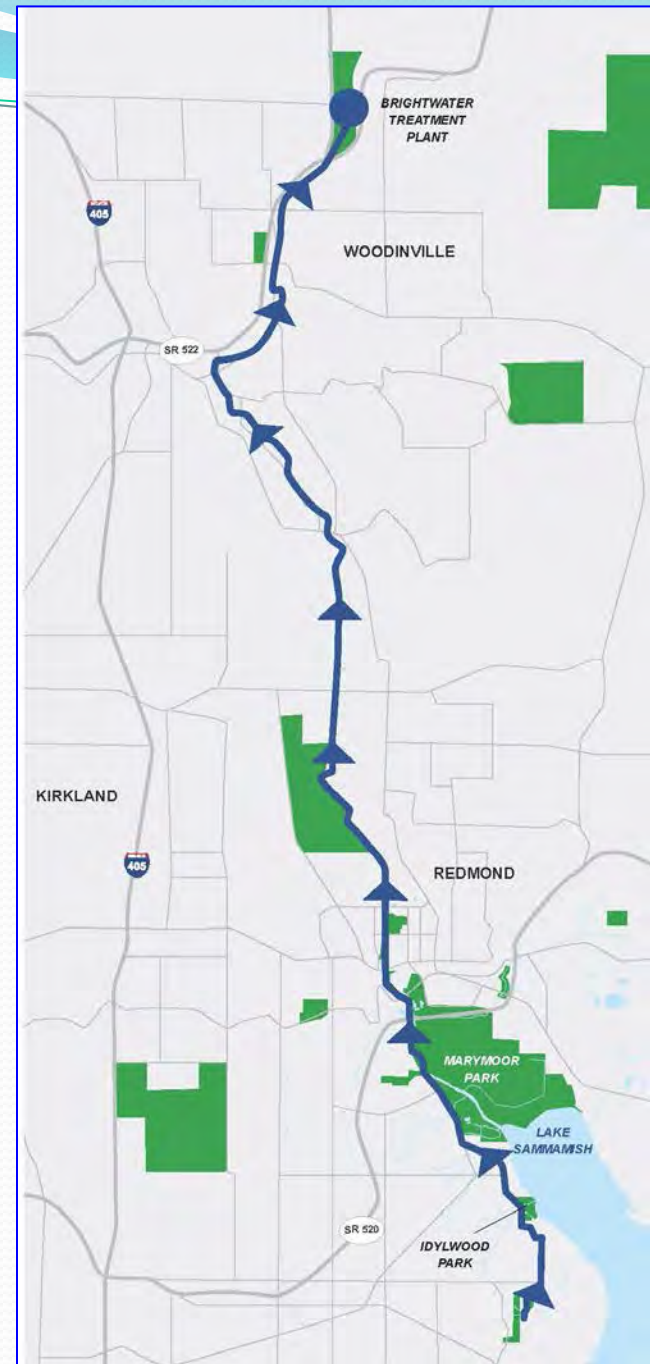
- Almost 400 miles of pipelines serving over 400 square miles
- On an average day, we're treating 180 million gallons of wastewater



Where your wastewater goes



Redmond's wastewater goes to Brightwater Plant, the newest treatment plant in our regional system.



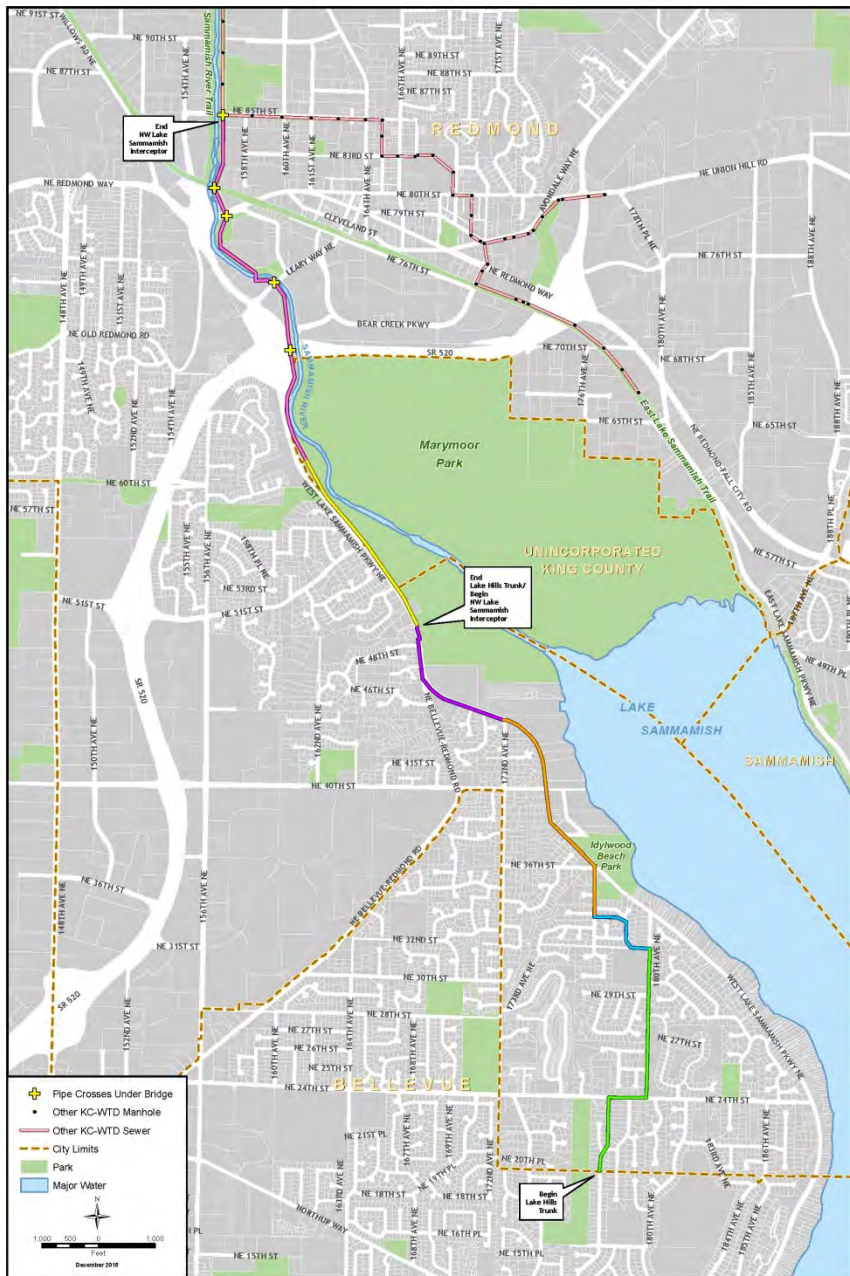
Project Background

Project Need

- Upgrade King County's sewer pipelines in Redmond to provide service for 50+ years
- Provide additional capacity for growth

- Lake Hills Trunk- built in the 1950's
- NW Lake Sammamish Interceptor- built in the 1970's





Lake Hills and NW Lake Sammamish Sewer Upgrade Project



Project Schedule

- Design (includes permitting and procurement) 2016-2018
- Construction 2018-2021

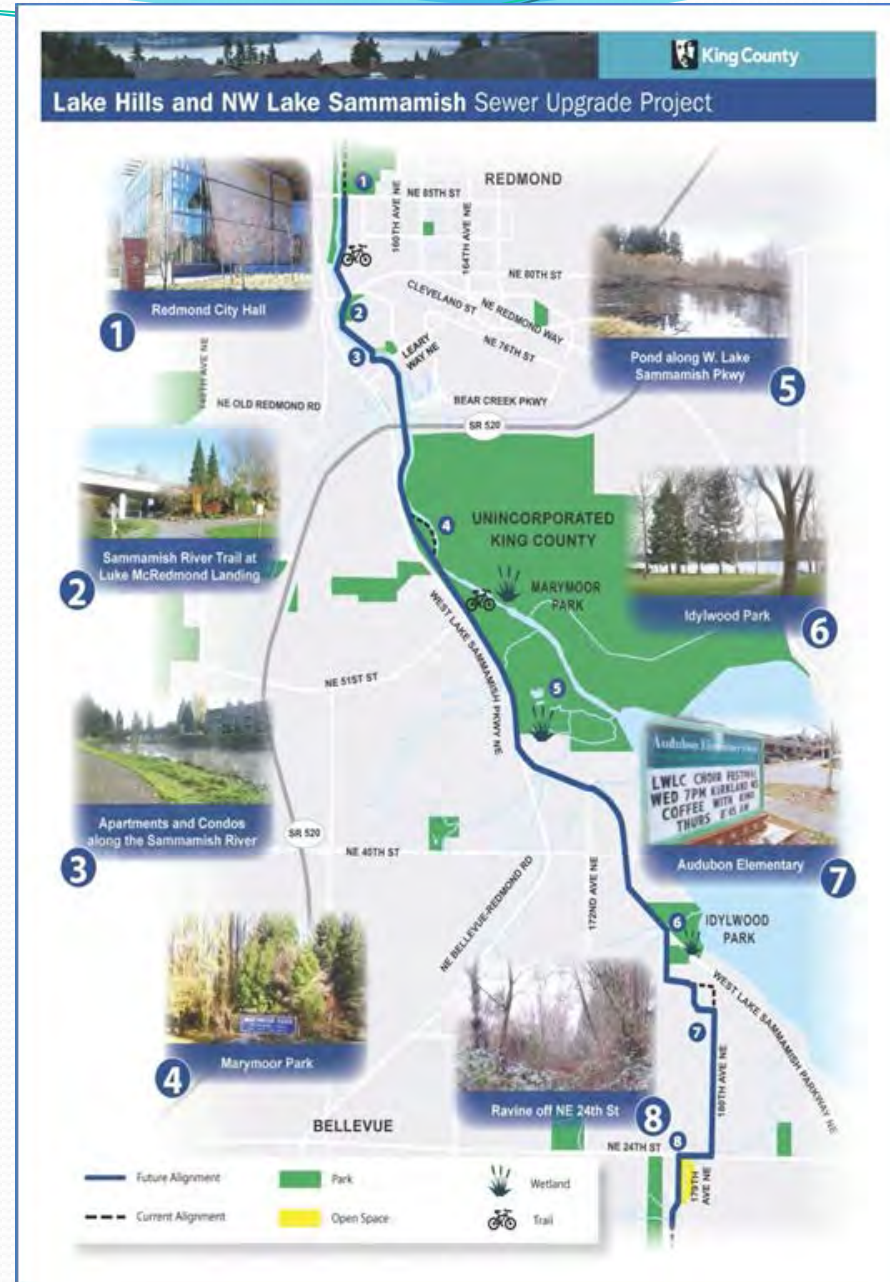
2014 - 2015	2016 - 2017	2018 - 2021
Alternatives Analysis	Design	Construction

Work in the field

Near-term work

Field investigations beginning May 2016:

- Surveys
- Utility locations
- Geotechnical evaluations-
soils and groundwater



Construction methods

- Open trench installation
 - Traffic detours
 - Trail detours
- Trenchless installation
 - Limits surface impacts
 - Protects environmentally sensitive areas
 - Not appropriate for all situations!



Working with our communities

Outreach during design

- Briefings for jurisdictions, groups and organizations
- On site meetings and events
- Home/business visits for project neighbors
- Booths at community festivals
- County-produced materials and information for community news outlets
- Education materials and activities for area schools



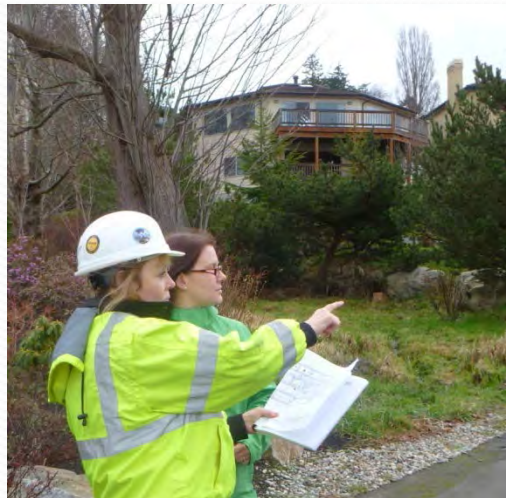
Our goals for community outreach

- Keep people up to date and informed
- Help people learn about their sewer systems
- Address concerns, answer questions
- Bring local information back to the project team to inform decisions, designs, and contract specifications.



Outreach during construction

- Pre-construction community meetings with the contractor
- Advance notice of major activities
- Progress updates by door hangers, newsletter, email and Web
- Problem-solving- 24 hour hotline, one-on-one meetings



Questions/Discussion



King County

Lake Hills and NW Lake Sammamish Sewer Upgrade Project

- For project updates, **text KING REDMONDSEWER to 468-311**
- For more information, visit www.kingcounty.gov/KCRedmondSewer
- Contact Monica Van der Vieren at 206-477-5502 or monica.vandervieren@kingcounty.gov