



**King County**

Lake Hills Trunk/NW Lake Sammamish Interceptor  
Sewer Upgrade Project

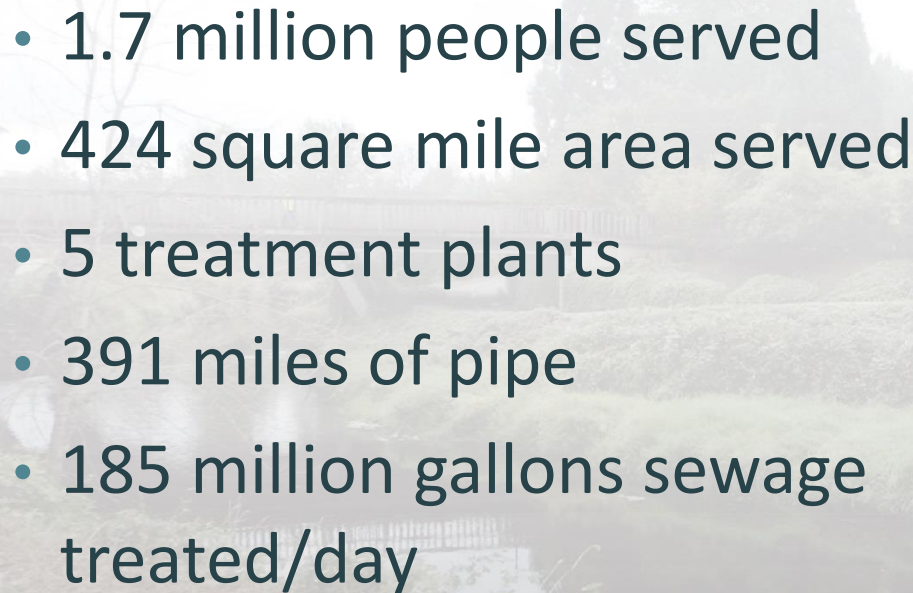


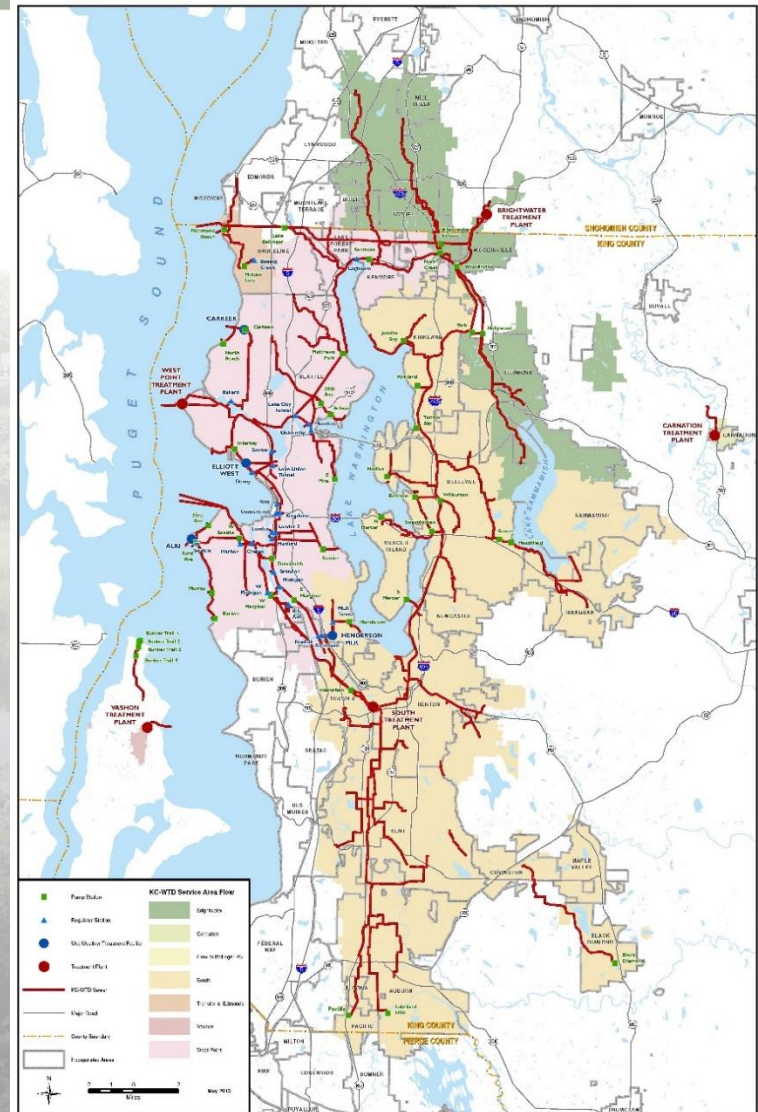
# Sammamish Waterway Condos Briefing

April 9, 2018



# King County WTD

- 
- 1.7 million people served
  - 424 square mile area served
  - 5 treatment plants
  - 391 miles of pipe
  - 185 million gallons sewage treated/day



# Project Need and Overview

## ◎ Project Overview

- 4.5 miles of regional sewer upgrade
- 1.5 miles new recycled water line

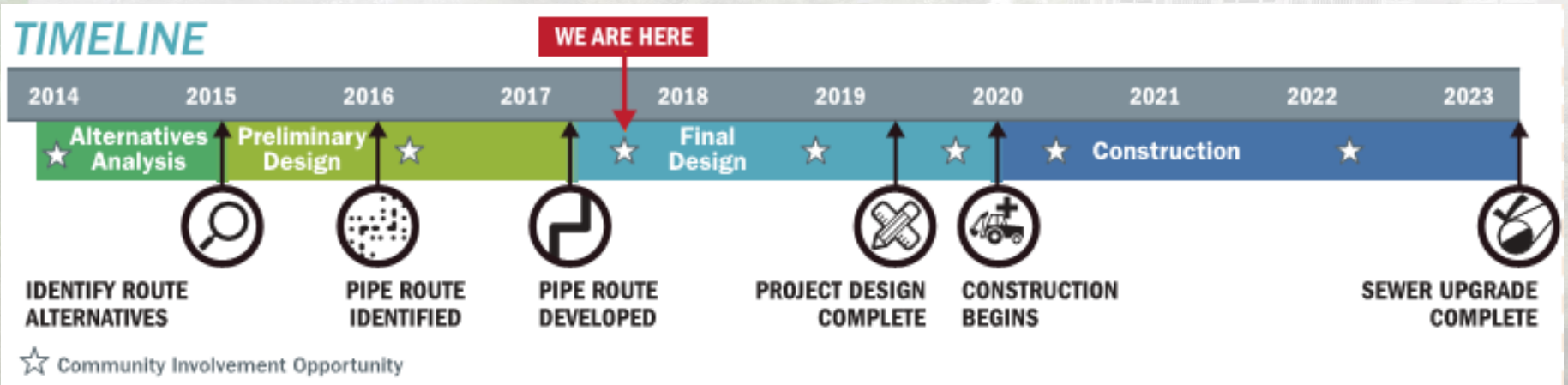
## ◎ Need

- Capacity is constrained
- Existing condition concerns

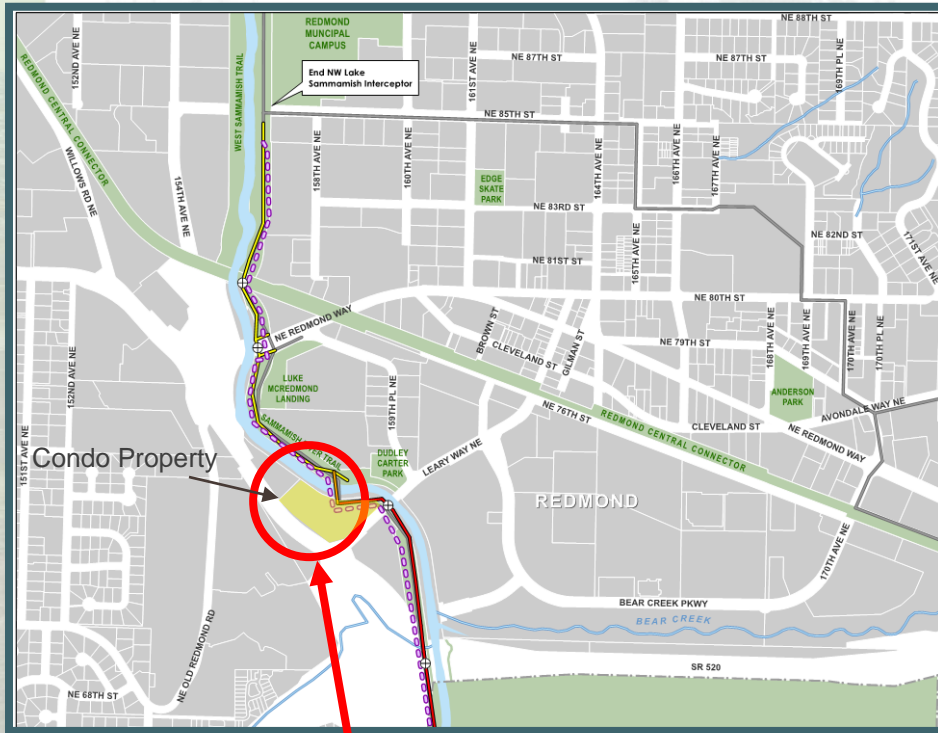




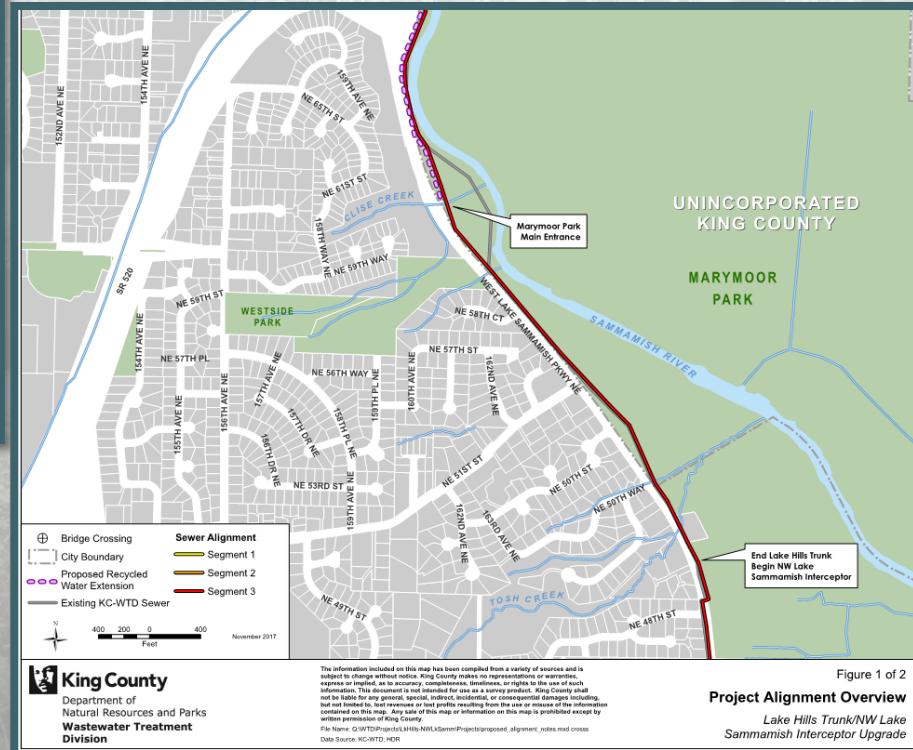
# Project Timeline



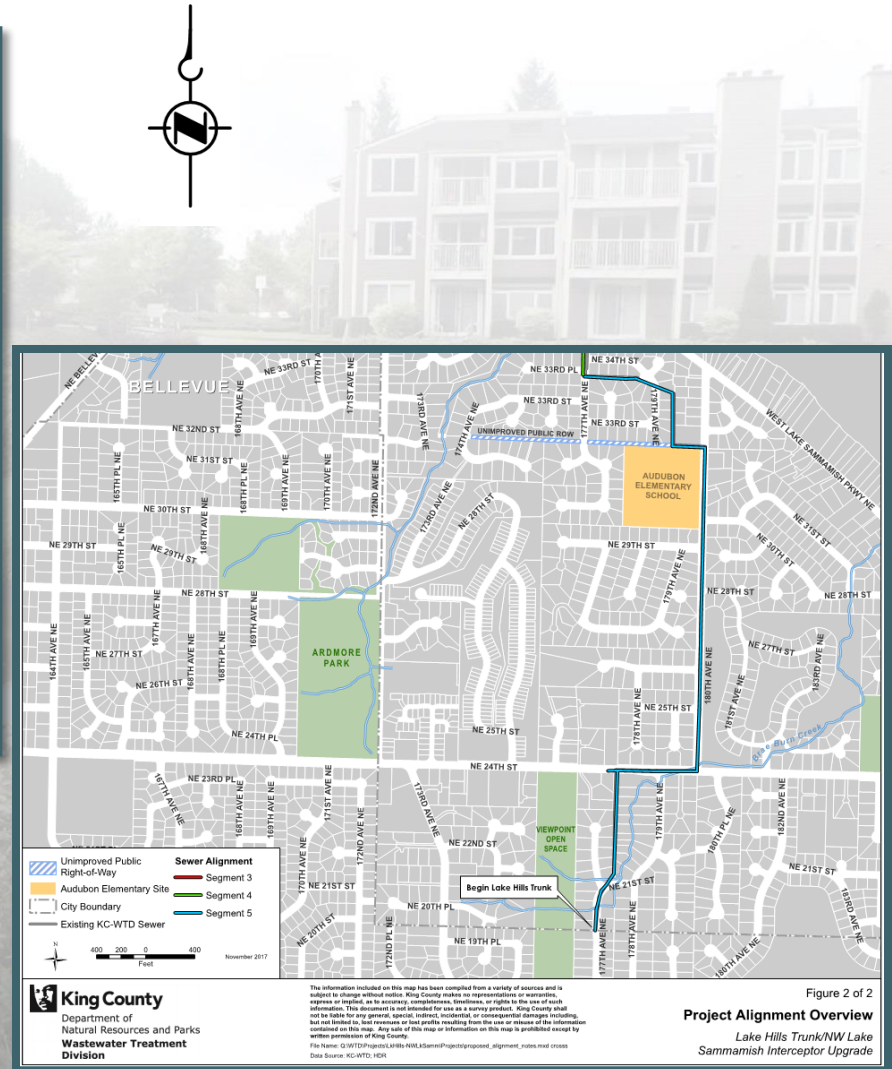
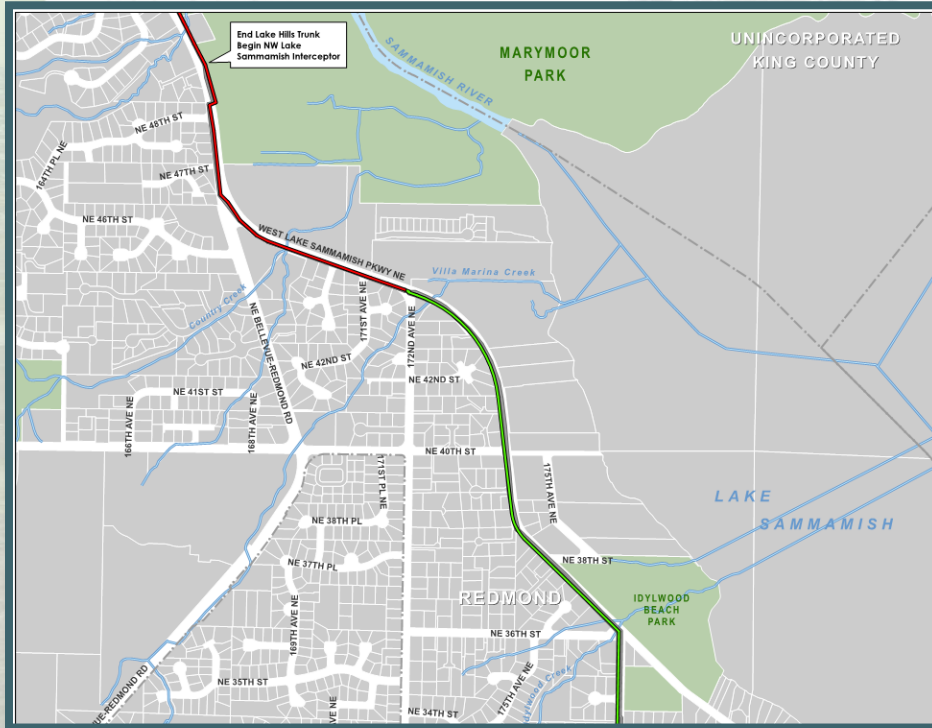
# Alignment Overview



Sammamish River Crossing



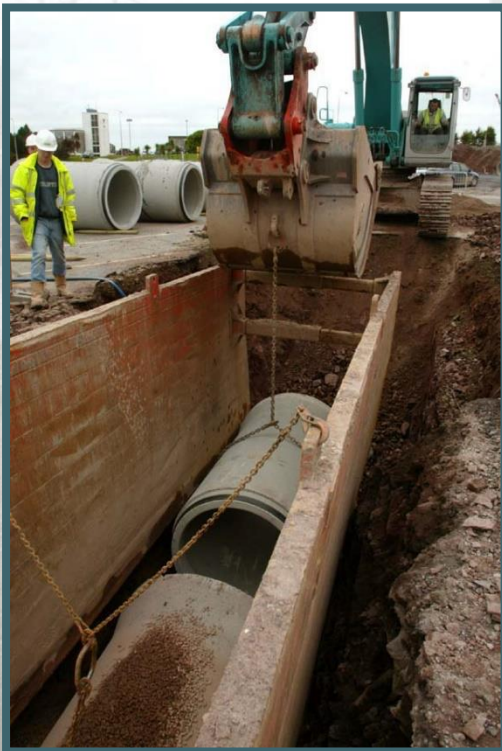
# Alignment Overview





# Construction methods: Open-trench

## ◎ Open Trench Construction

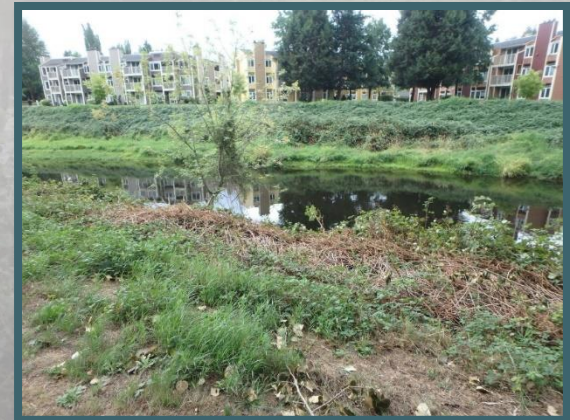
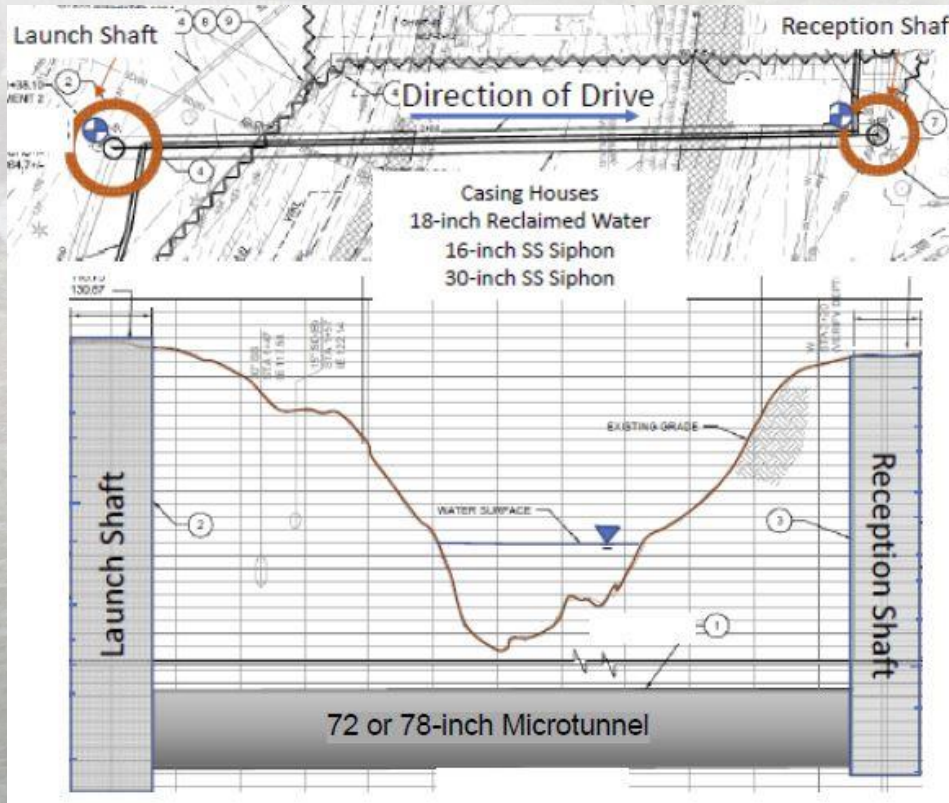
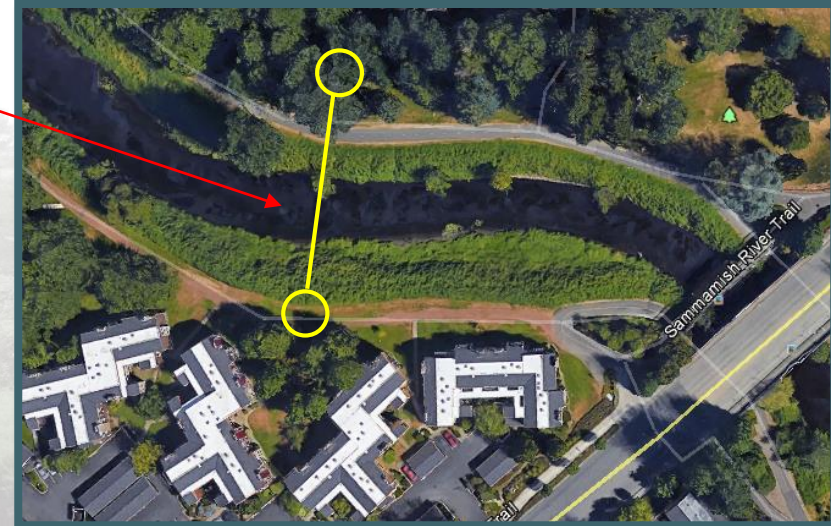




# Construction methods: trenchless

## ○ River crossing

Sewer and shaft locations for inverted siphon





# Construction methods: trenchless

## ◎ Trenchless pits for river crossing



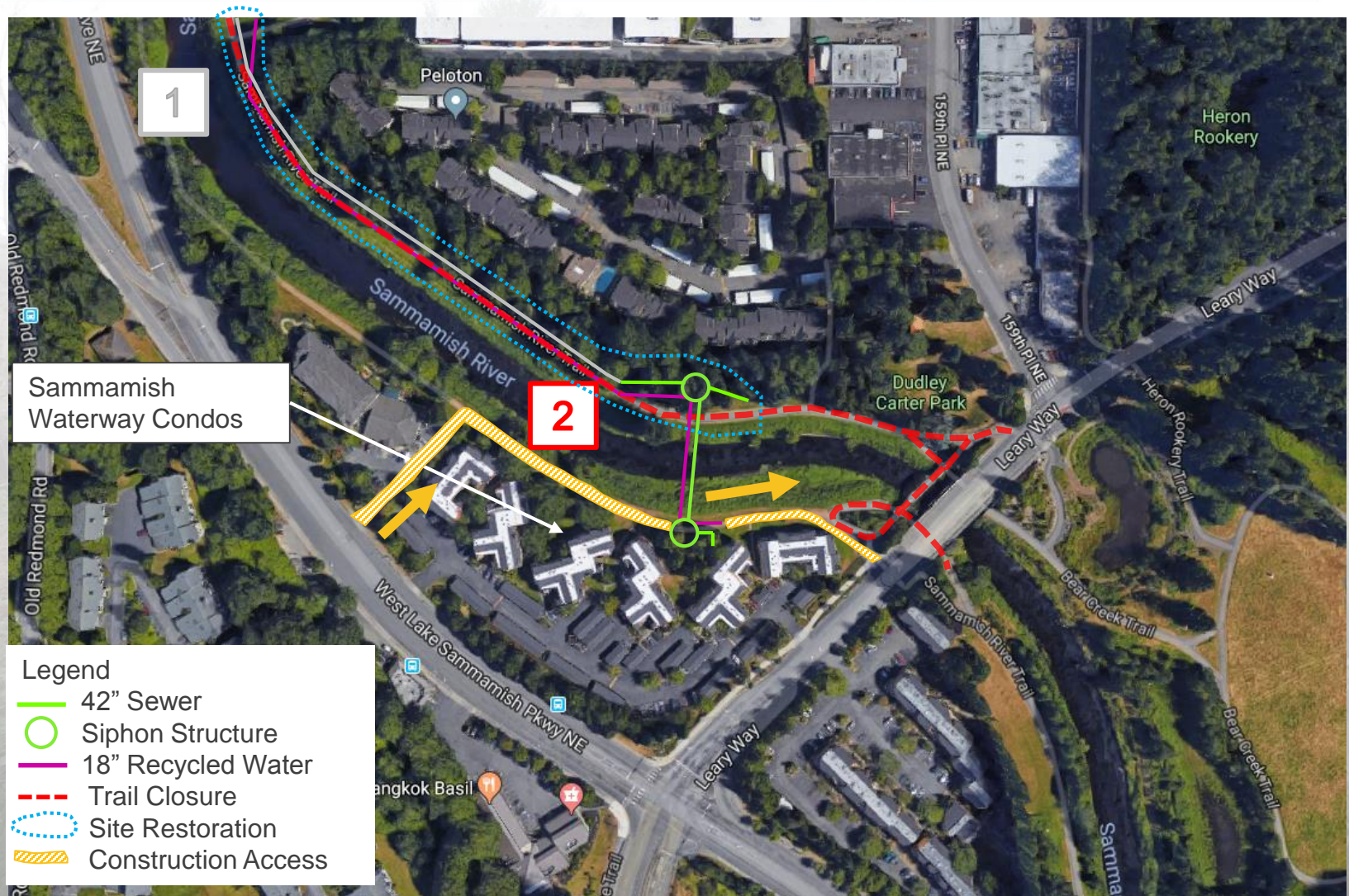


# Construction Sequencing





# Construction Sequencing





# Construction Sequencing





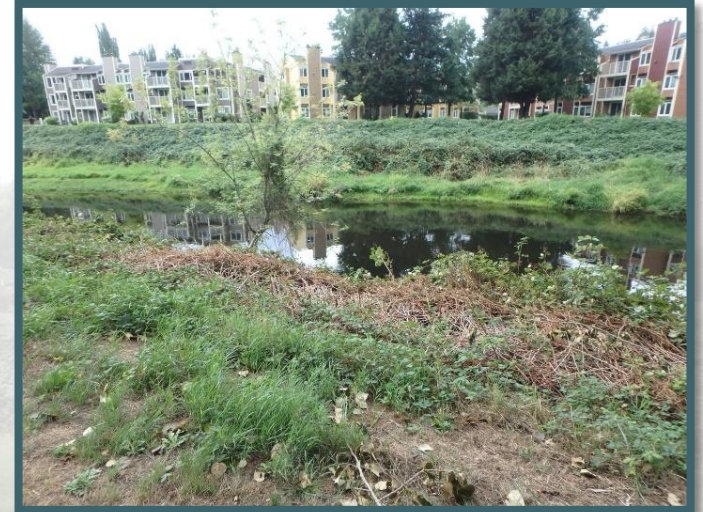
# Construction Sequencing





# What to expect during construction

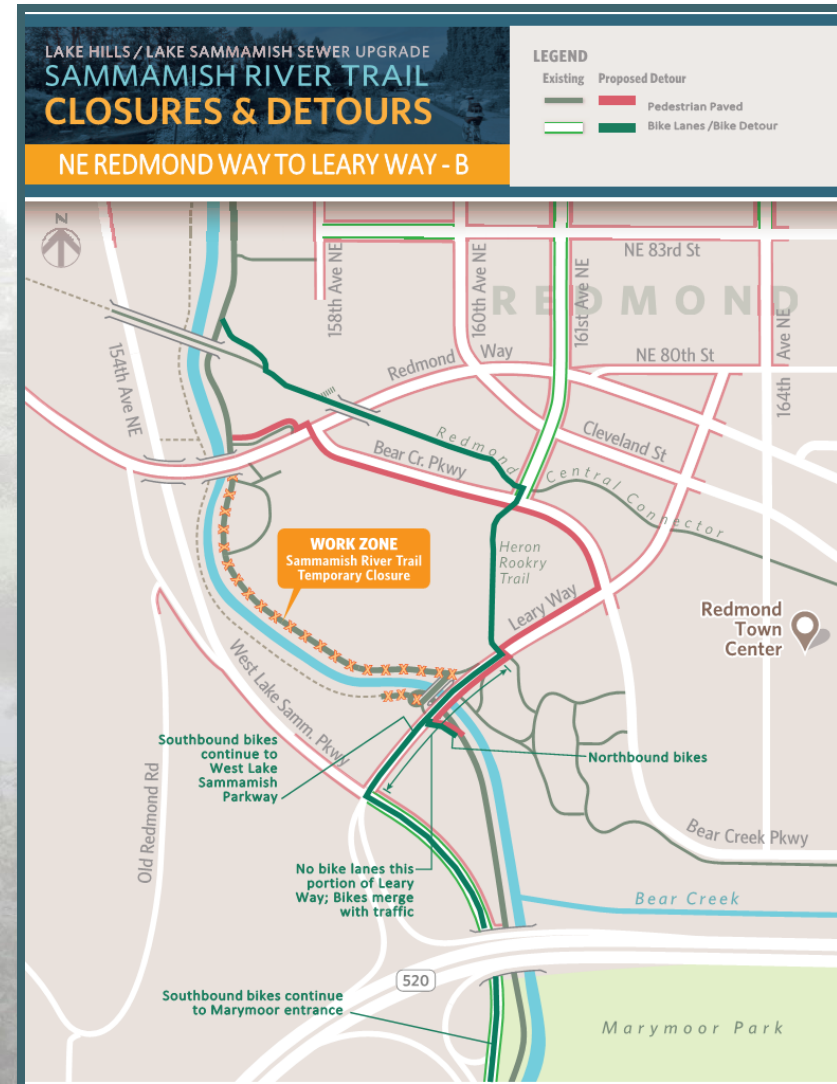
- ◎ Typical work hours
  - 7A.M. to 7P.M. weekdays
  - 9 A.M. to 6P.M. Saturday
- ◎ Large equipment, truck traffic
- ◎ Noise, vibration, dust





# What to expect during construction

- ⦿ Road work leading to lane closures, increased congestion and delays
- ⦿ Trail closures & detours
- ⦿ Vegetation removal, restoration, shoreline enhancement



# Next Steps

- Property acquisition
- State Environmental Policy Act (SEPA) determination
  - Anticipated public comment period in June 2018
- Conduct additional fieldwork
- Acquire necessary permits
- Refine construction sequencing (when we will build what)
- Begin construction in mid-2020





# Our commitment to you

- Keep you up to date and informed
- Address concerns, answer questions
- Whenever possible, use your feedback to shape the design
- No surprises during construction





# Questions?

## Contact:

Kelly Foley  
King County  
(206) 477-8621

[Kelly.foley@kingcounty.gov](mailto:Kelly.foley@kingcounty.gov)  
[www.kingcounty.gov/KCRedmondSewer](http://www.kingcounty.gov/KCRedmondSewer)

