



King County

Lake Hills and NW Lake Sammamish Sewer Upgrade Project

Redmond Pedestrian Bicycle Advisory Committee

October 8, 2018





Lake Hills and NW Lake Sammamish Sewer Upgrade Project

Agenda

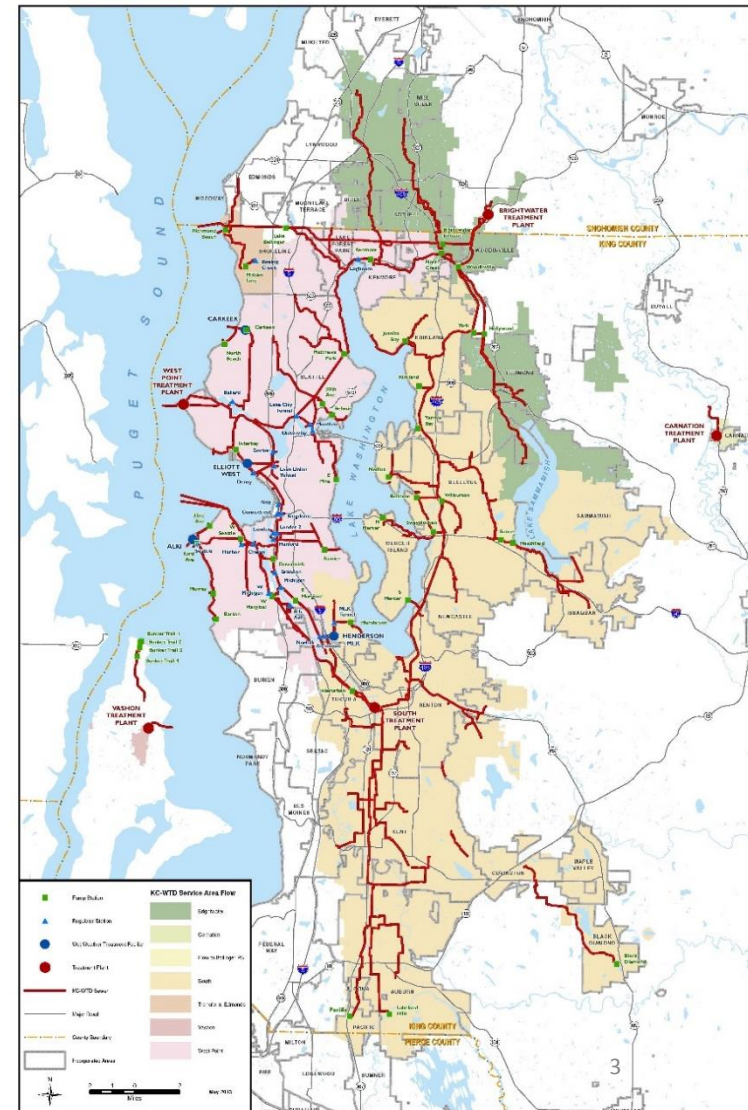
- Project overview
- Construction methods and impacts
- What we've heard from the community
- Sammamish River Trail
 - Closures
 - Detours
 - Restoration
- Next steps
- Our commitment to you



Lake Hills and NW Lake Sammamish Sewer Upgrade Project

King County WTD

- 1.7 million people served
- 424 square mile area served
- 5 treatment plants
- 391 miles of pipe
- 185 million gallons sewage treated/day

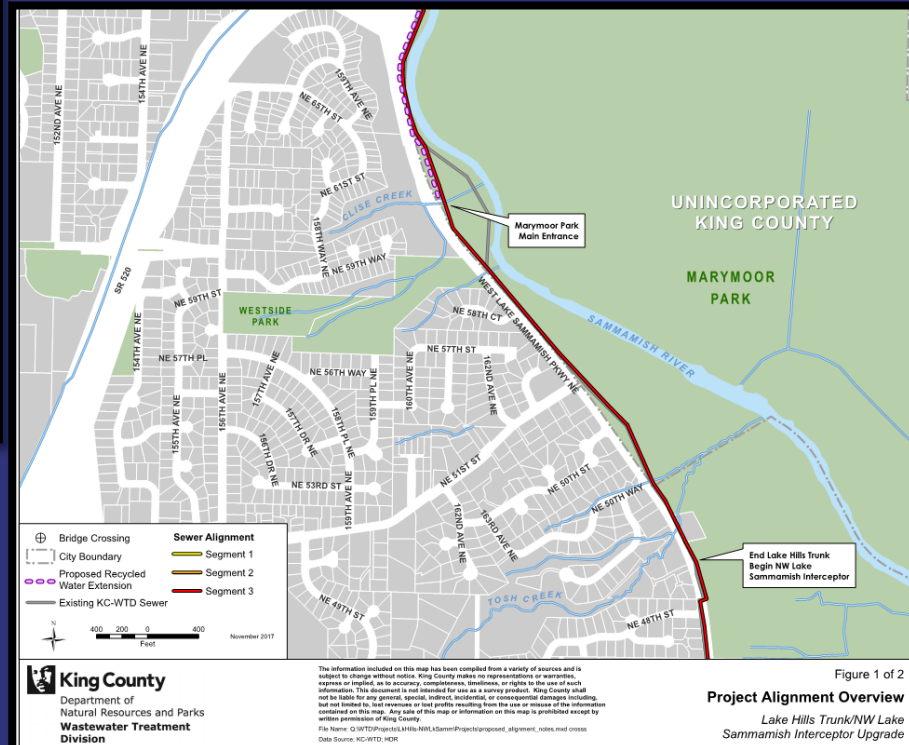


Objective

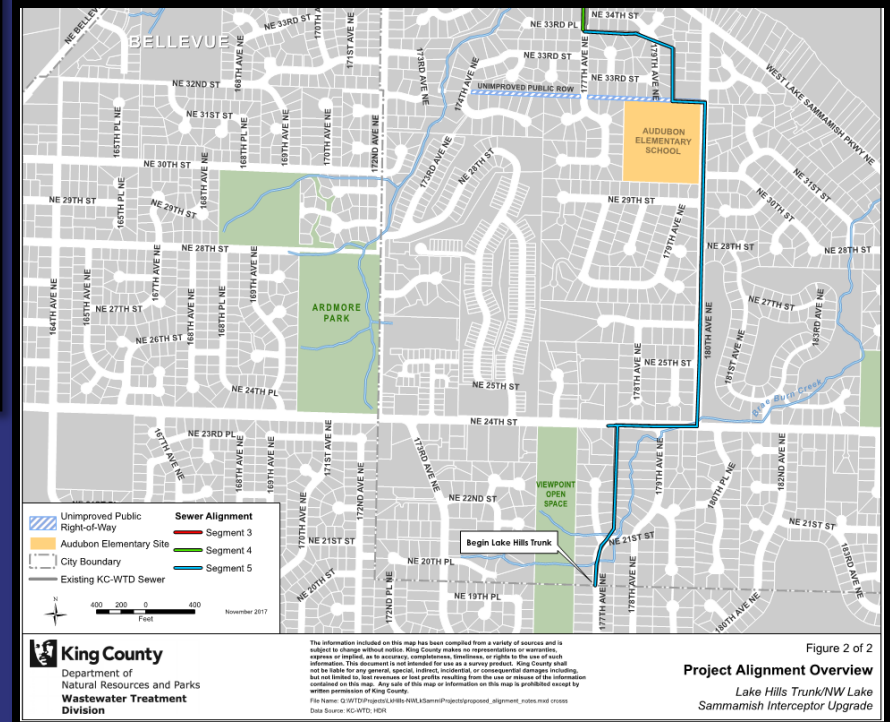
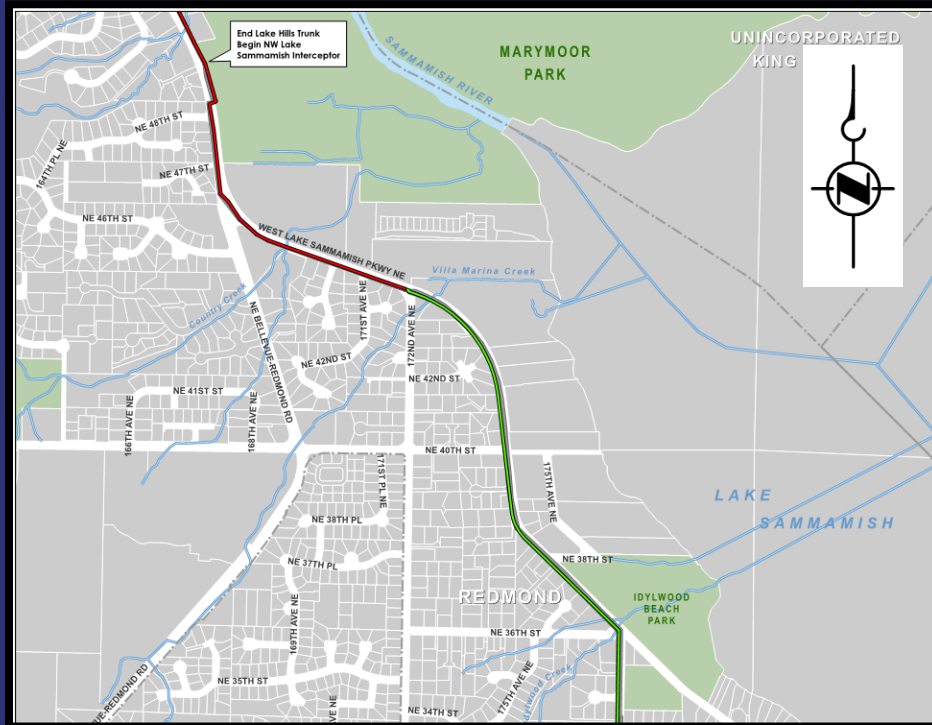
- Upgrade 4.5 miles of sewer pipes in Redmond to provide service for 50+ years



Project alignment



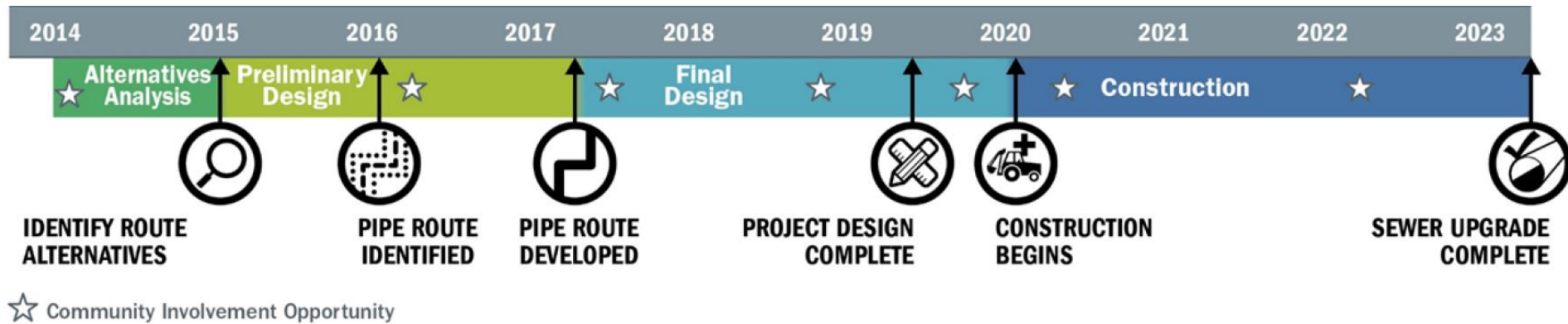
Project alignment





Lake Hills and NW Lake Sammamish Sewer Upgrade Project

Schedule





Lake Hills and NW Lake Sammamish Sewer Upgrade Project

Construction methods

- Primarily open trench
 - Ideal for shallow work zones
 - Surface impacts will include traffic detours, trail detours
- Short, trenchless sections
 - Protects environmentally sensitive areas
 - Limits surface impacts
 - Not appropriate for all situations





Lake Hills and NW Lake Sammamish Sewer Upgrade Project

What to expect during construction

- Typical work hours
 - 7 A.M. TO 7 P.M. weekdays
 - 9 A.M. TO 6 P.M. Saturday
- Large equipment, truck traffic
- Noise, vibration, dust
- Trail closures and detours
- Vegetation removal and restoration of roadways and sidewalks





Lake Hills and NW Lake Sammamish Sewer Upgrade Project

What we've heard from the community

- Limit disruptions to West Lake Sammamish Parkway and the Sammamish River Trail. Where disruptions are inevitable, find safe and efficient detour routes
- Maintain access to Marymoor and Idylwood Parks and the Sammamish River Trail for recreation, especially during the busy summer months
- Identify and avoid sensitive plant and animal habitats in the area
- Reduce work on private property
- Coordinate with Audubon Elementary and limit construction near the school during the school year
- Coordinate with the City of Redmond, Sound Transit and Microsoft regarding other projects in the area

Sammamish River Trail

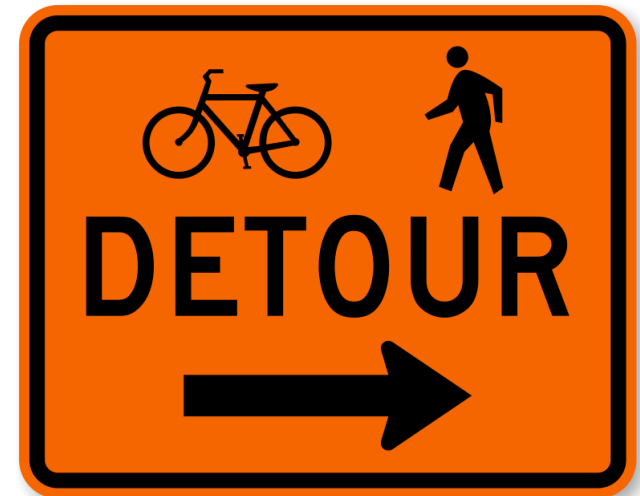




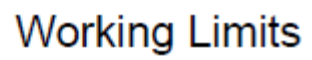
Lake Hills and NW Lake Sammamish Sewer Upgrade Project

Closures & detours

- Intermittent closures over 3-year construction window
- Work will be completed in sections and may not be consecutive
- Closures will be between access points, requiring off-site detour routes
- Detour routes will vary between a half-mile to a few miles in length



Working limits



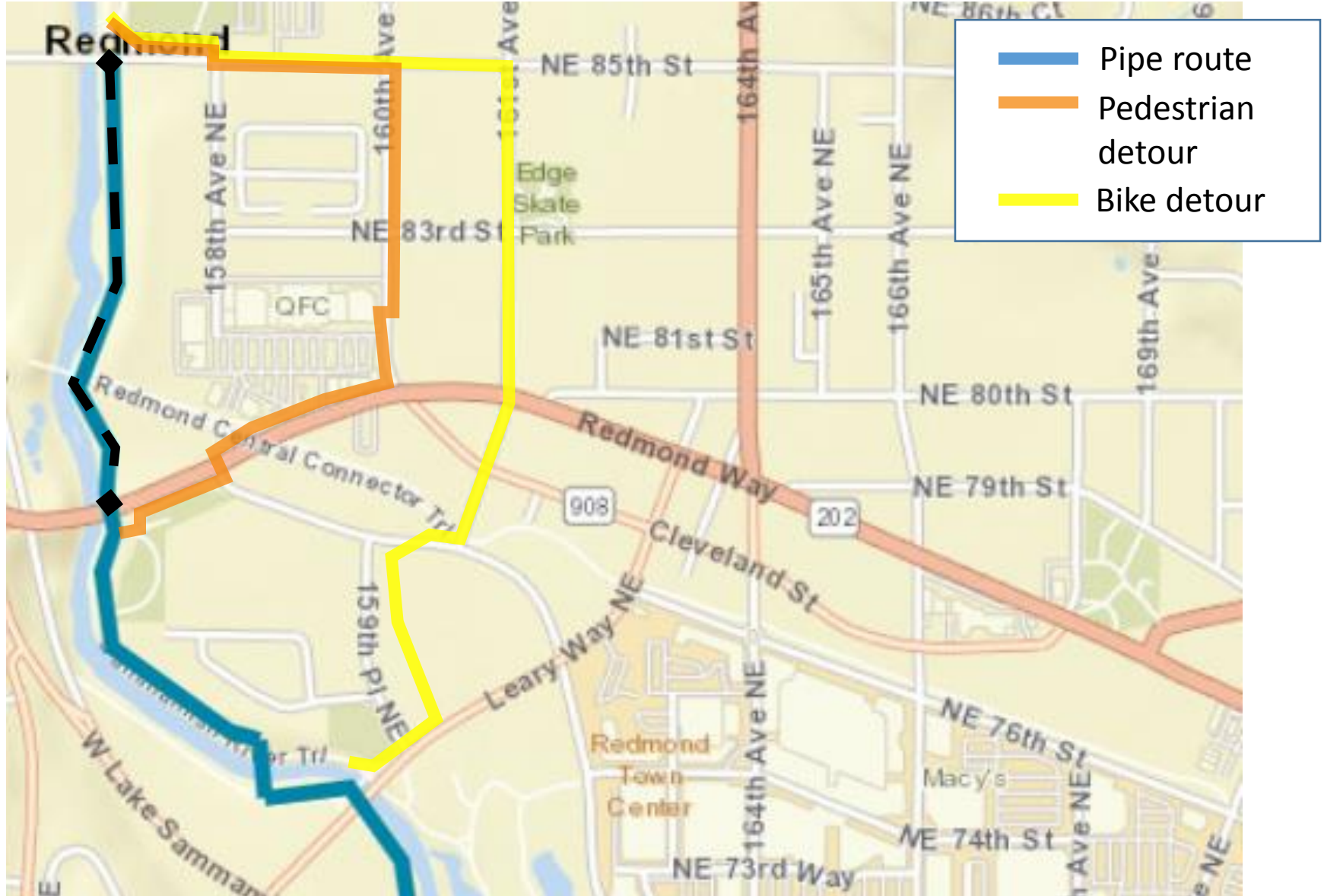


Lake Hills and NW Lake Sammamish Sewer Upgrade Project

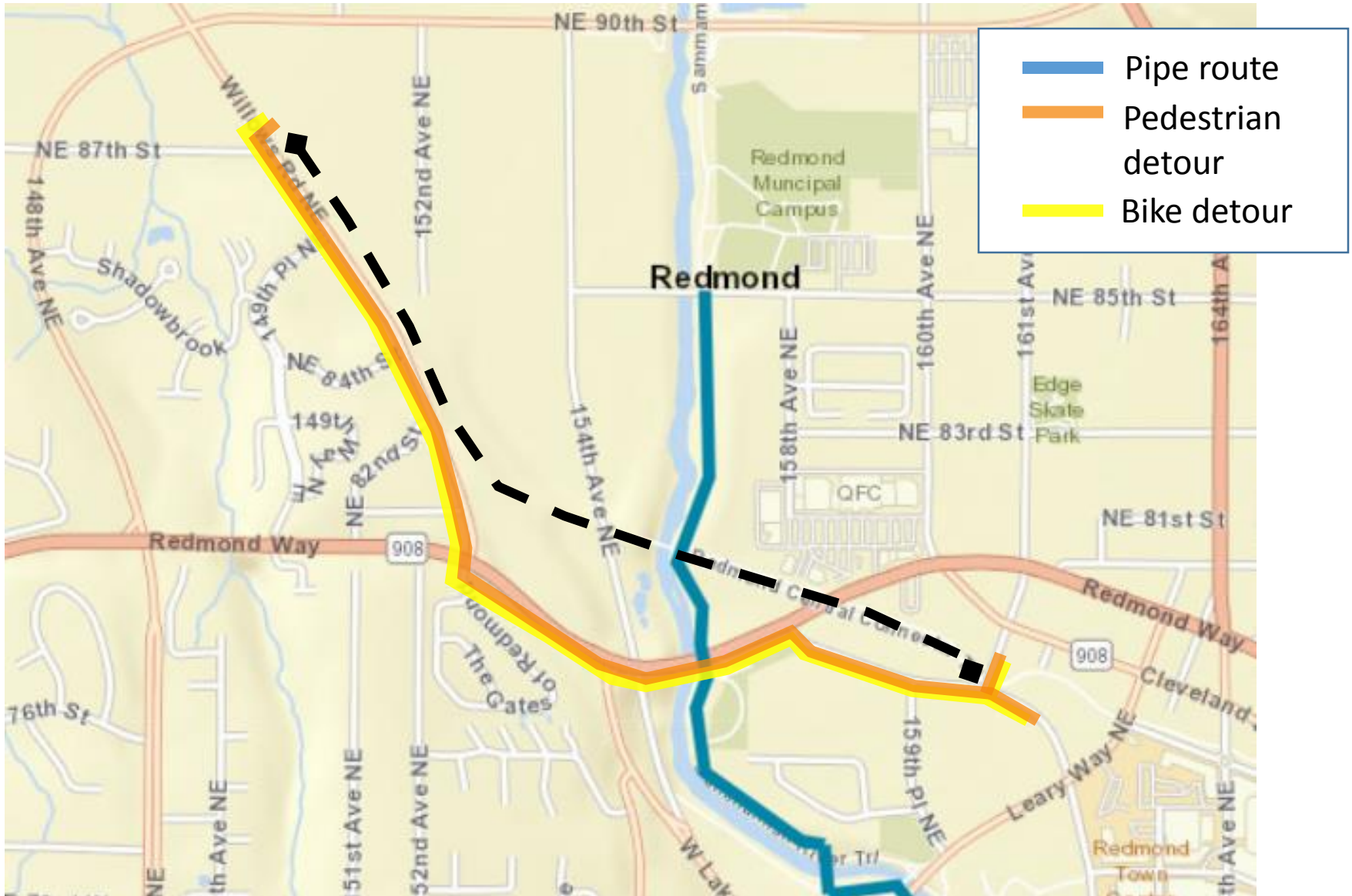
Detour guidelines

- Pedestrians
 - Provide detours that are ADA compliant
 - Marymoor Park entrance requires additional analysis
- Bikes
 - Sought to use established bike routes wherever possible
 - At some locations, bikes are directed to share sidewalks for short distances
- City of Redmond will ultimately review and approve all detour routes
- Contractor may wish to modify some of the detours. This would require approval from the City of Redmond

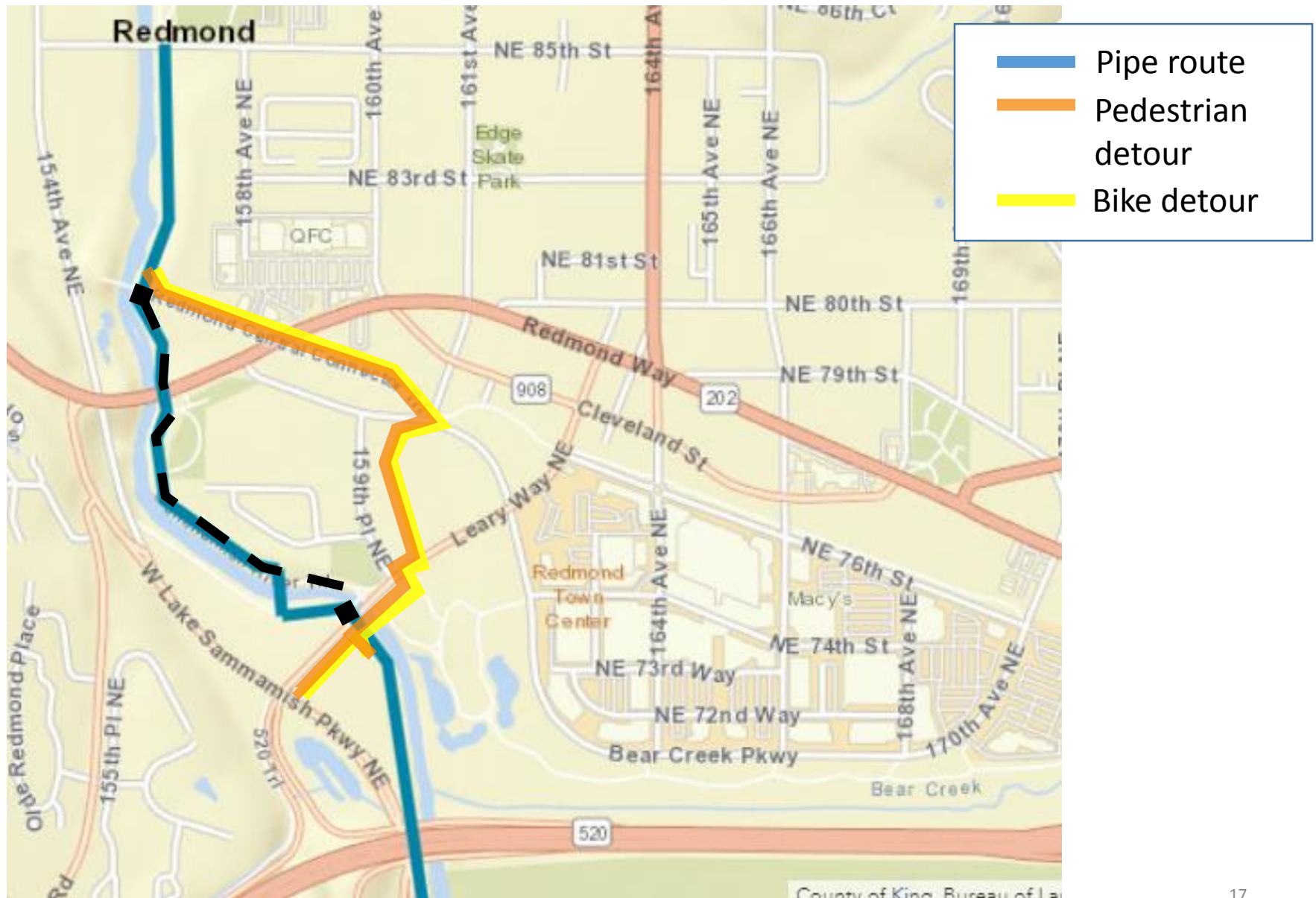
Closure: NE 85th St to Redmond Way



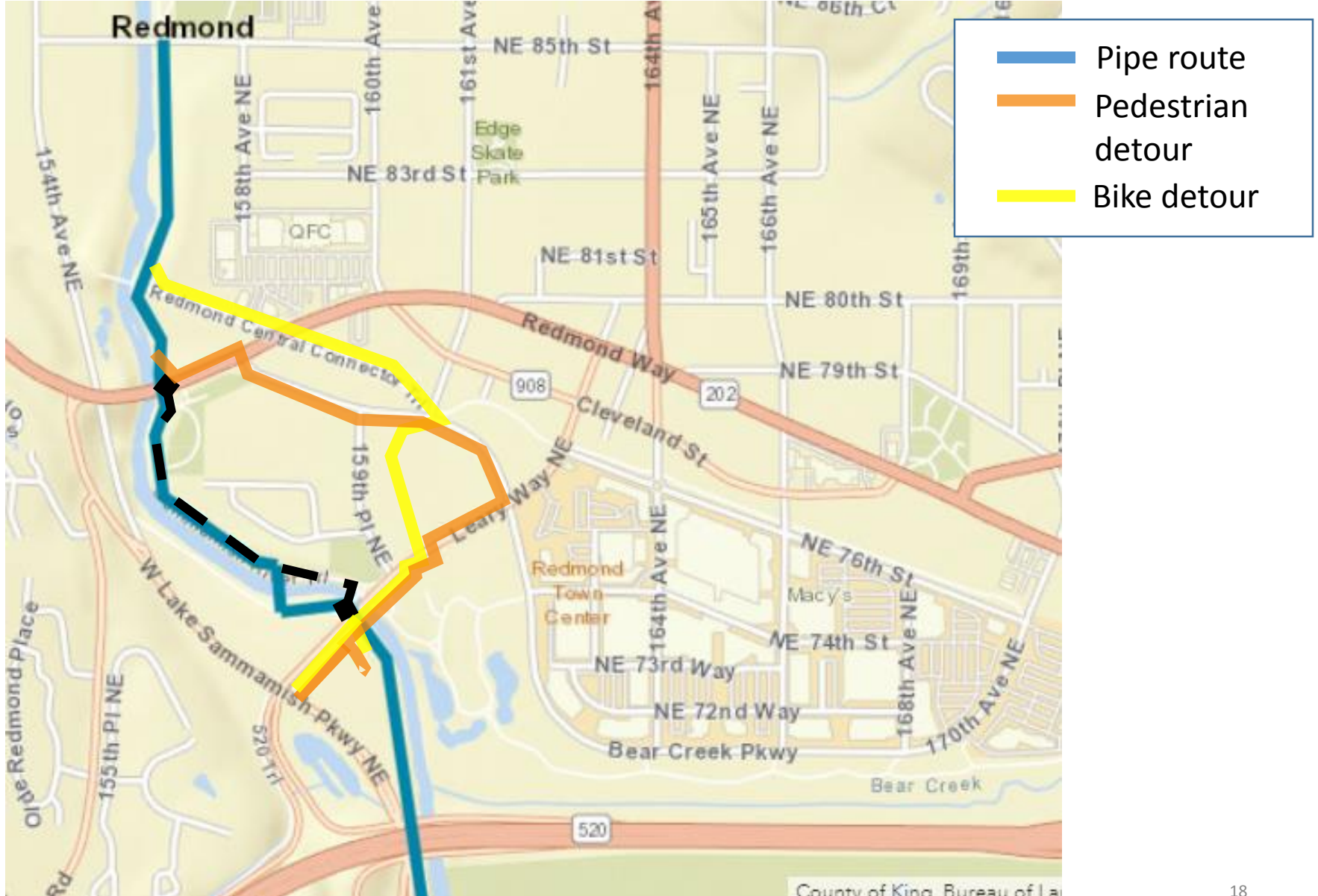
Closure: Redmond Central Connector



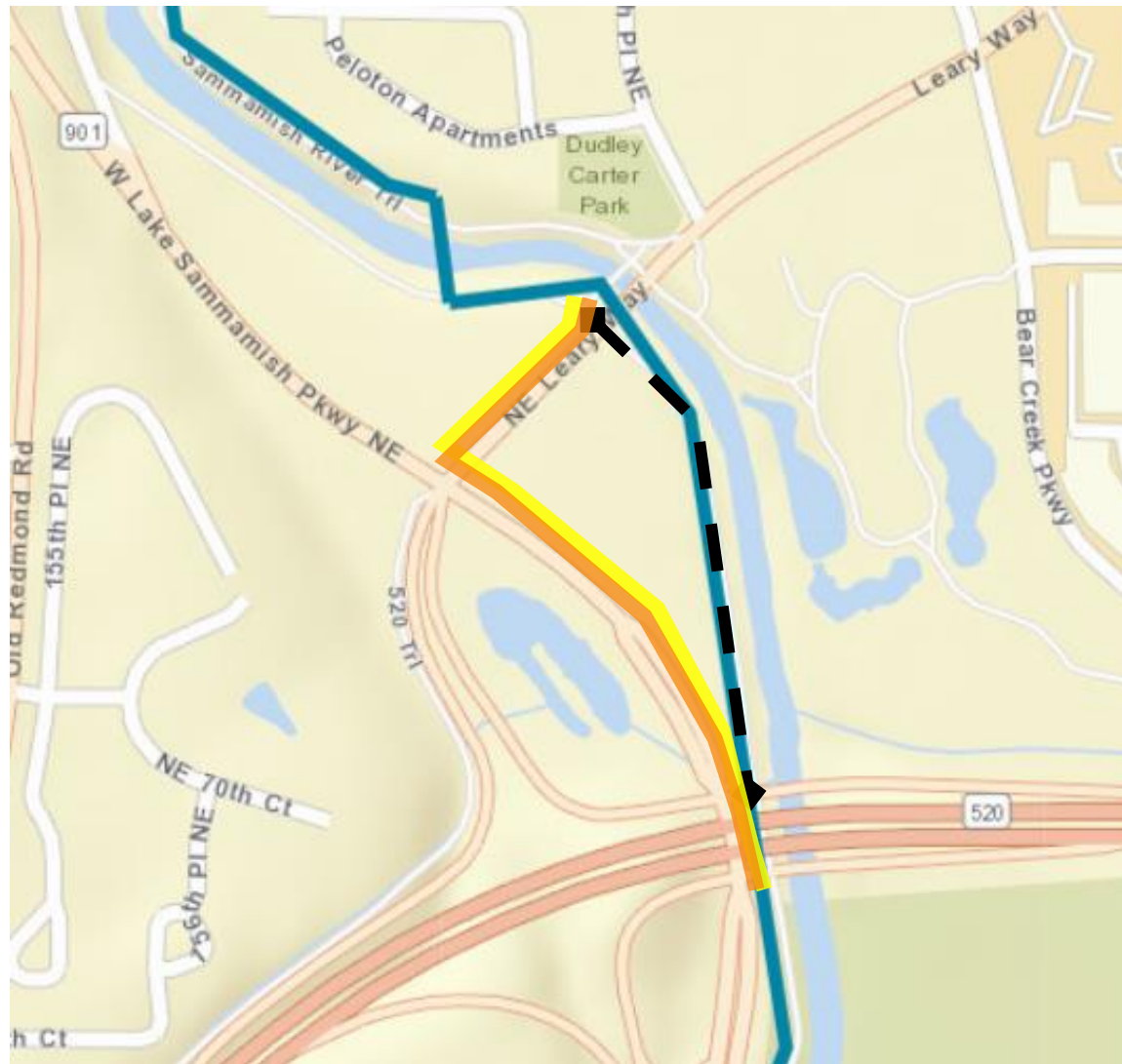
Closure: Central Connector to Leary Way



Closure: Redmond Way to Leary Way

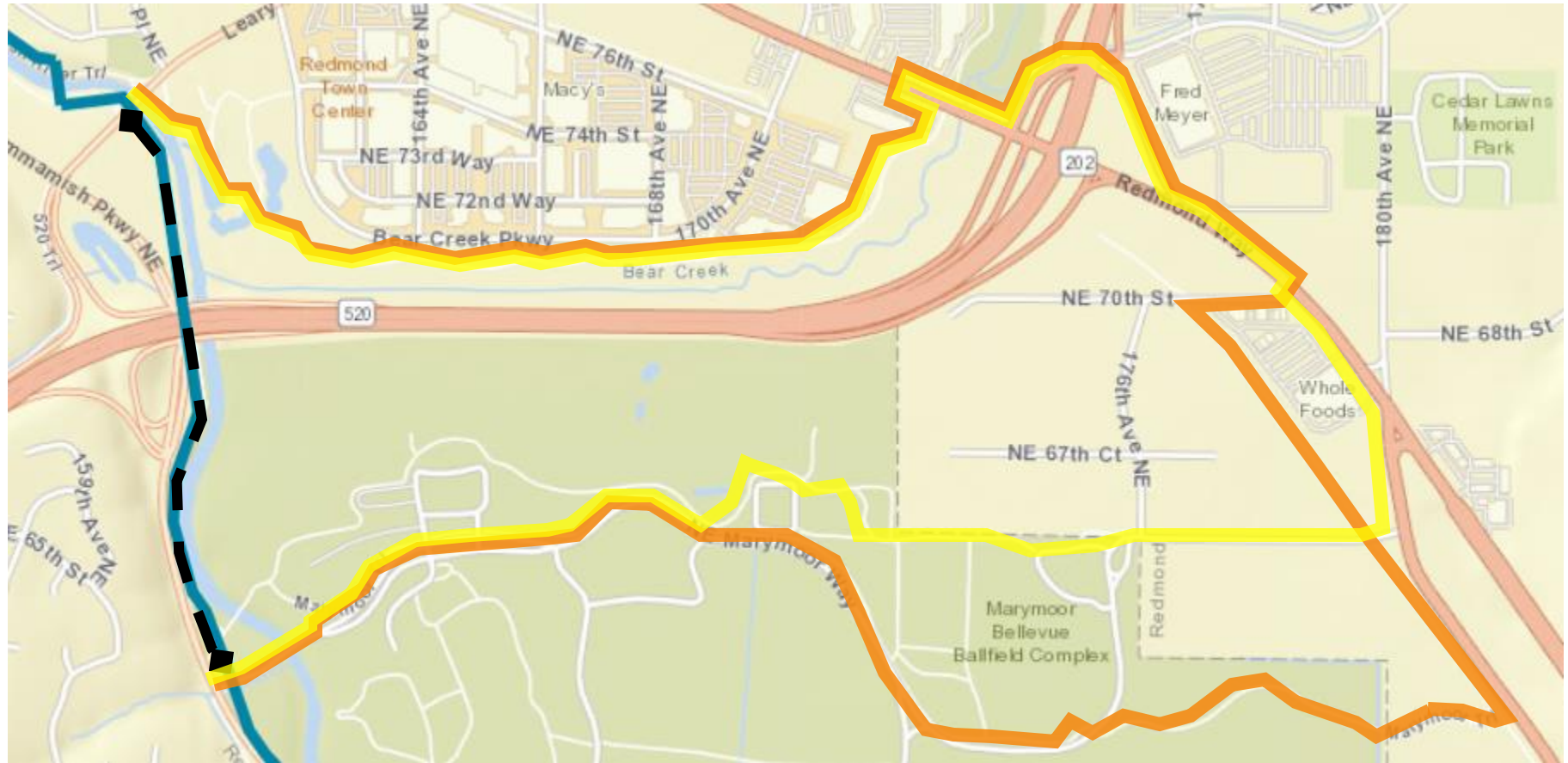


Closure: Leary Way to SR 520



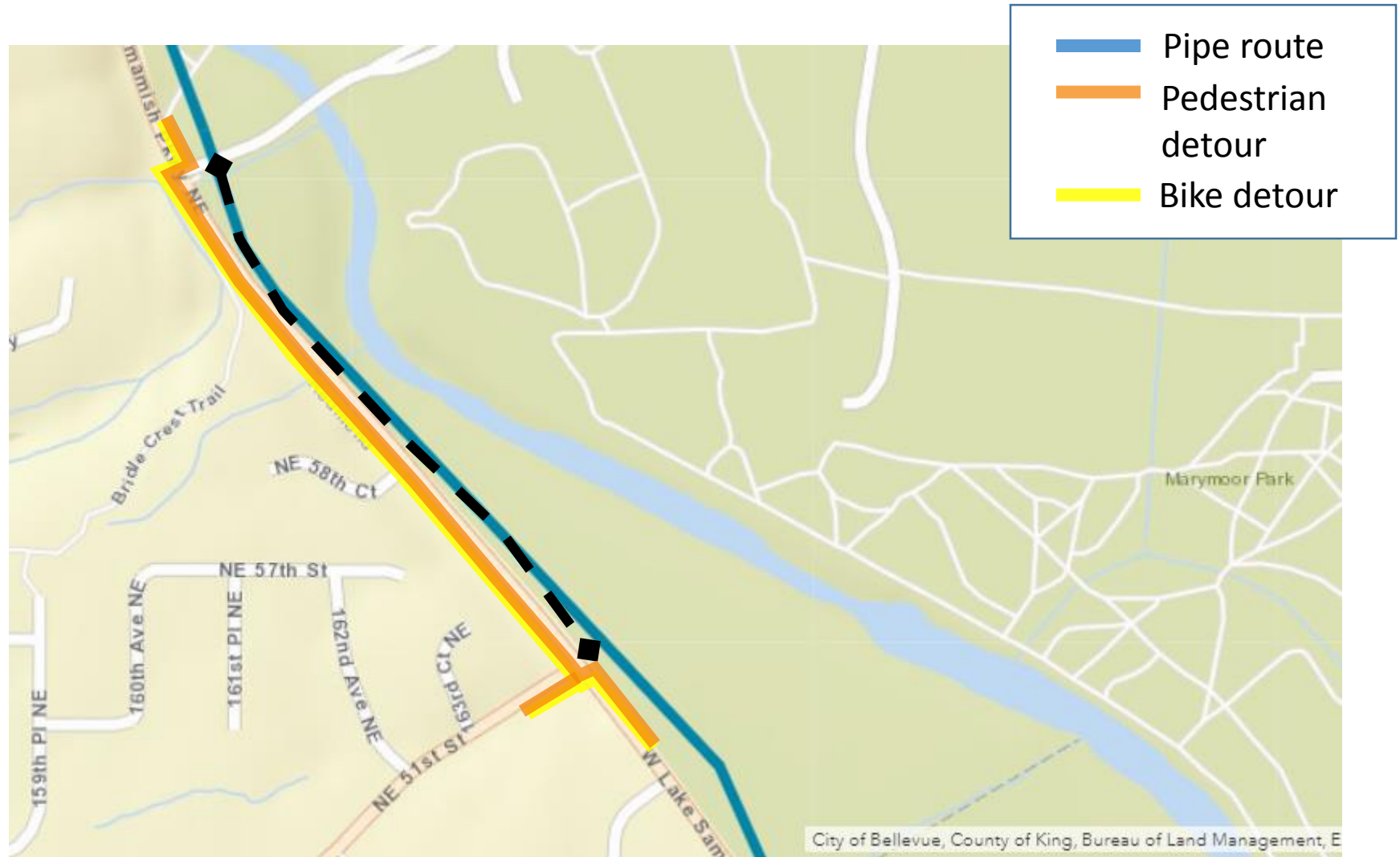
- Pipe route
- Pedestrian detour
- Bike detour

Closure: Leary Way to Marymoor Park Entrance



- Pipe route
- Pedestrian detour
- Bike detour

Closure: Marymoor Park Entrance to NE 51st St





Lake Hills and NW Lake Sammamish Sewer Upgrade Project

Restoration

- Trail surface restoration: Affected areas to be repaved to at least existing extent
 - King County is currently considering widening both paved and gravel areas, where possible
- Maintenance holes to be relocated off of trail where possible
- Trees and shrubs to be replanted per guidelines set by City of Redmond



Lake Hills and NW Lake Sammamish Sewer Upgrade Project

What's next?

- Conduct additional fieldwork
- Acquire necessary permits
- Complete design by end of 2019
- Hire contractor in early 2020
- Begin construction in mid-2020



Lake Hills and NW Lake Sammamish Sewer Upgrade Project

Our commitment to you

- Keep you up to date and informed
- Address concerns, answer questions
- Whenever possible, use your feedback to shape the design
- No surprises during construction





Lake Hills and NW Lake Sammamish Sewer Upgrade Project

Questions and comments

- **Contact** Kelly Foley, community relations at 206-477-8621 or kelly.foley@kingcounty.gov
- **Visit** the project website at: www.kingcounty.gov/KCRedmondSewer
- **Sign up** for email updates on our website
- **Enroll** in text alerts: text **KING REDMONDSEWER** to **486-311**