



**King County**

## **Lake Hills and NW Lake Sammamish Sewer Upgrade Project**

# **Redmond Parks and Trails Commission Briefing**

March 7, 2019



## Lake Hills and NW Lake Sammamish Sewer Upgrade Project

### Agenda

- Project overview
- Sammamish River Trail
  - What we've heard from trail users
  - Closures
  - Detours
  - Restoration
- Next steps
- Our commitment to you

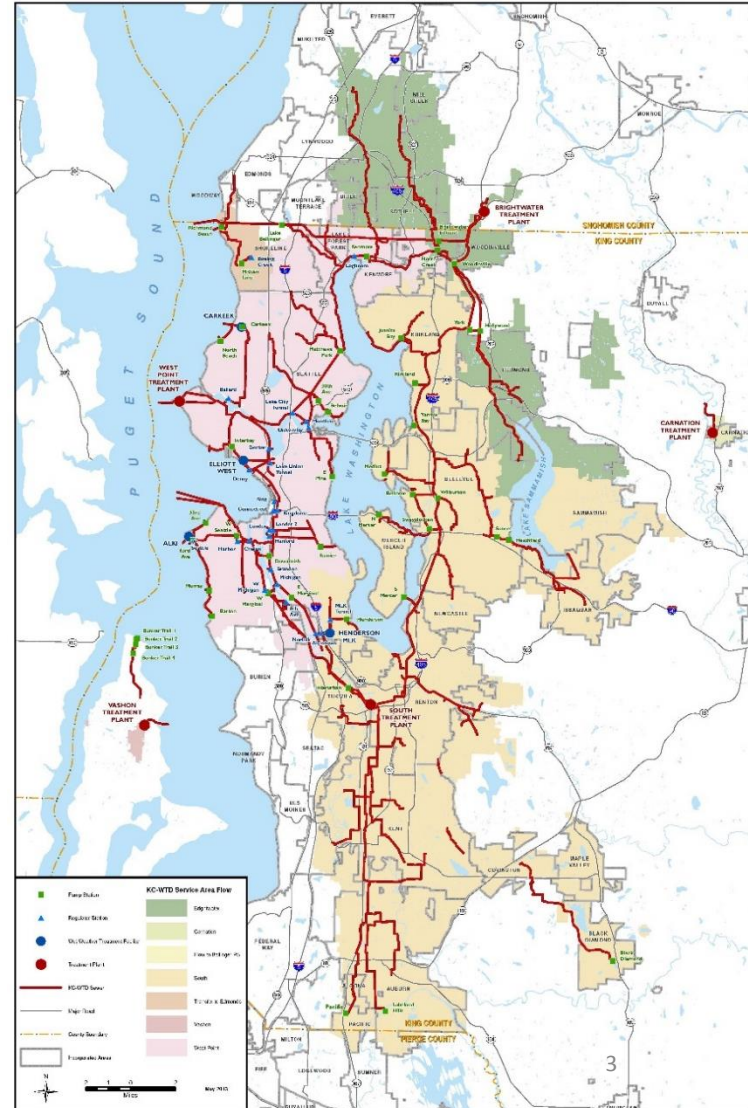




## A wide-angle photograph showing a row of houses with dark roofs in the foreground. Beyond the houses is a large body of water, likely a lake or bay, which stretches across the middle ground. In the background, there are rolling hills and mountains under a clear sky. The water reflects the surrounding landscape.

# King County WTD

- 1.7 million people served
- 424 square mile area served
- 5 treatment plants
- 391 miles of pipe
- 185 million gallons sewage treated/day



# Objective

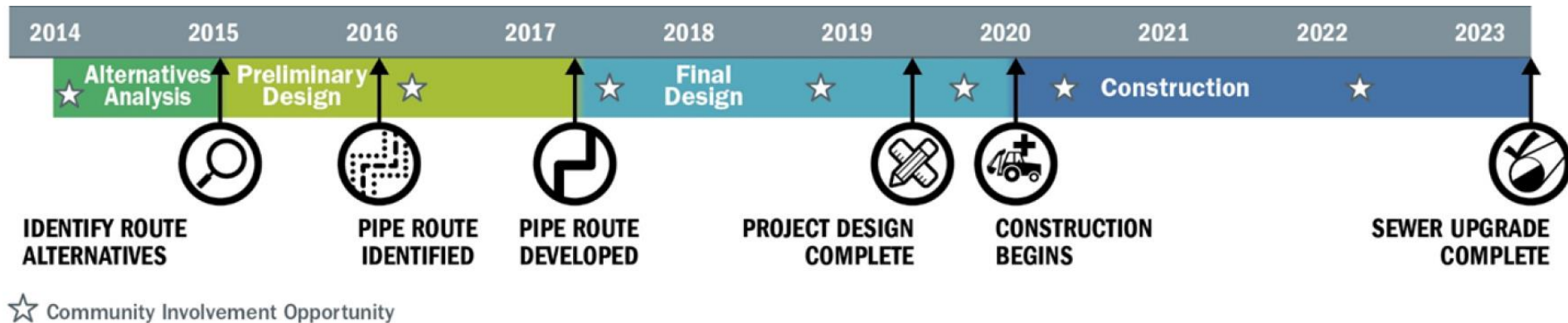
- Upgrade 4.5 miles of sewer pipes in Redmond to provide service for 50+ years





# Lake Hills and NW Lake Sammamish Sewer Upgrade Project

## Schedule





## Lake Hills and NW Lake Sammamish Sewer Upgrade Project

### What to expect during construction

- Typical work hours
  - 7 A.M. TO 7 P.M. Weekdays
  - 9 A.M. TO 6 P.M. Saturday
- Large equipment, truck traffic, noise, vibration, dust
- West Lake Sammamish Parkway lane closures & detours
- Work in the Stroll, Luke McRedmond Park, Dudley Carter Park, Marymoor Park
- Sammamish River Trail and closures and detours





# Lake Hills and NW Lake Sammamish Sewer Upgrade Project

## Idylwood Park

- Pipe will be in south bound lane of West Lake Sammamish Parkway
- Open cut construction will require lane closures
- Park access to be maintained at all times
- Overflow parking lot will be closed during work on 177th Ave NE





## **Lake Hills and NW Lake Sammamish Sewer Upgrade Project**

### What we've heard from trail users

- Limit disruptions to the Sammamish River Trail. Where disruptions are inevitable, find safe and efficient detour routes
- Maintain access to Marymoor and Idylwood Parks and the Sammamish River Trail for recreation, especially during the busy summer months
- Provide adequate safety signage and informational maps along detour routes
- Coordinate with the City of Redmond, Sound Transit and Microsoft regarding other projects in the area
- Consider widening the trail and improving sight lines through restoration



# Sammamish River Trail





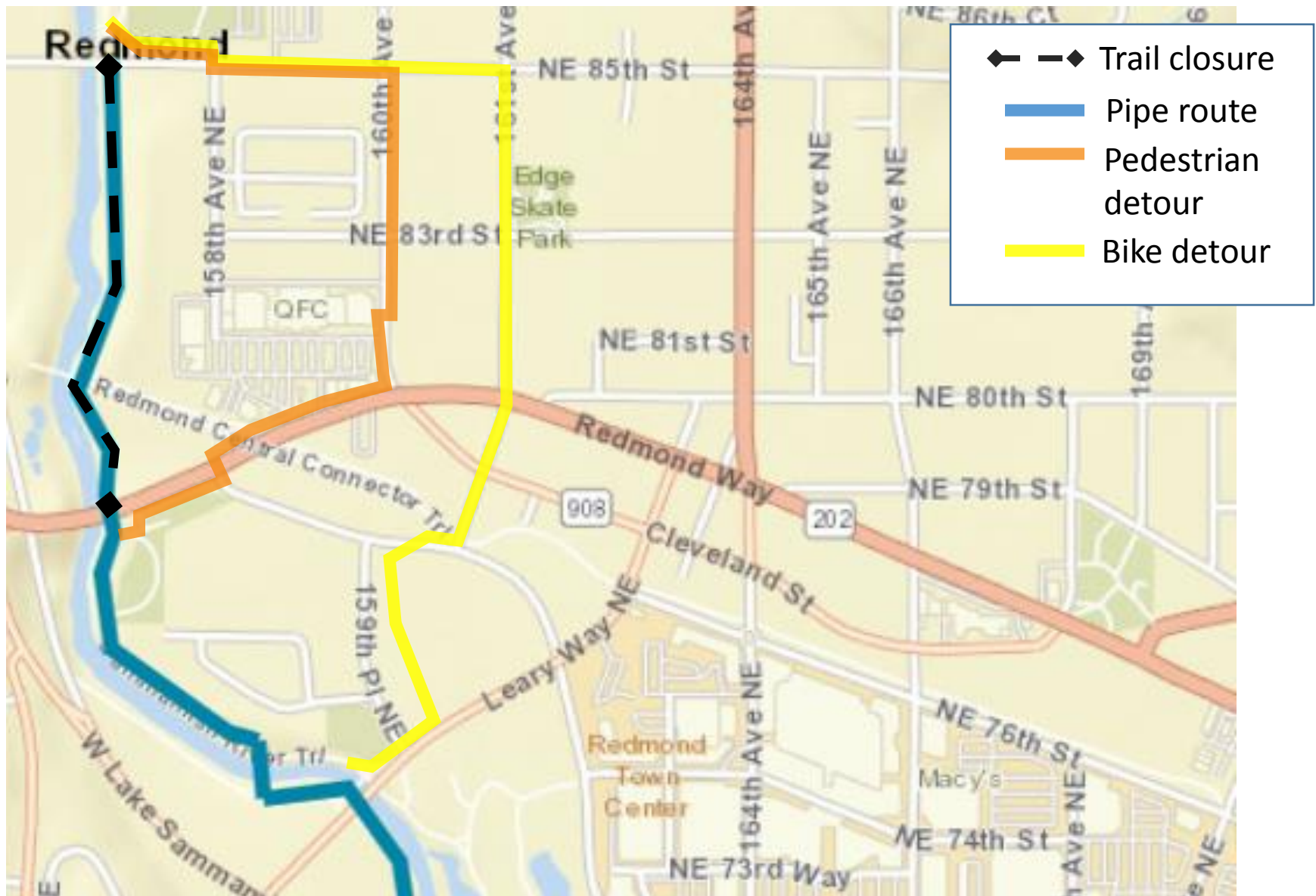
## Lake Hills and NW Lake Sammamish Sewer Upgrade Project

### Detour guidelines

- Pedestrians
  - Provide detours that are ADA compliant
- Bikes
  - Sought to use established bike routes wherever possible
  - At some locations, bikes are directed to share sidewalks for short distances
- City of Redmond will ultimately review and approve all detour routes
- Contractor may wish to modify some of the detours. This would require approval from the City of Redmond

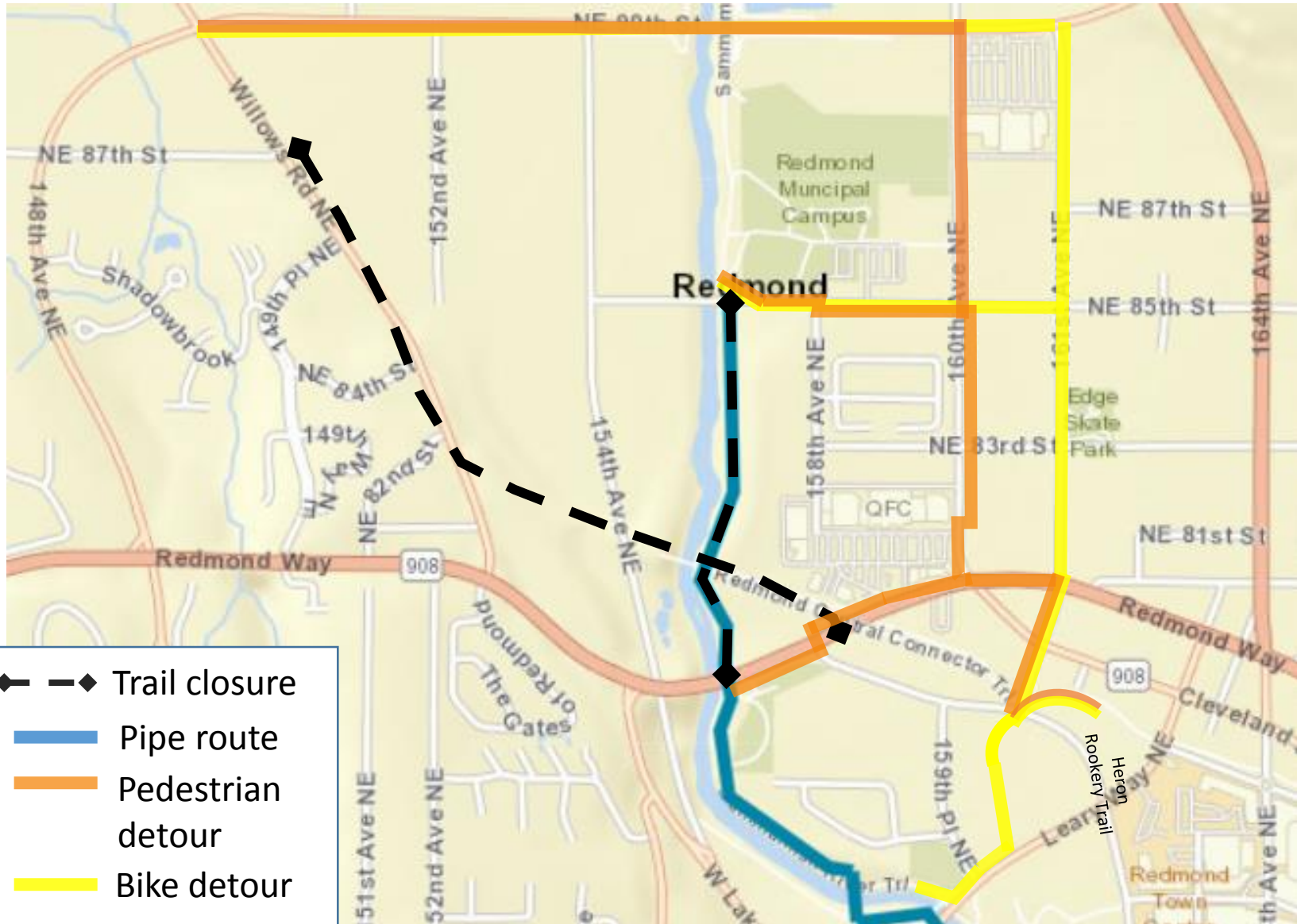


# Closure: NE 85th St to Redmond Way

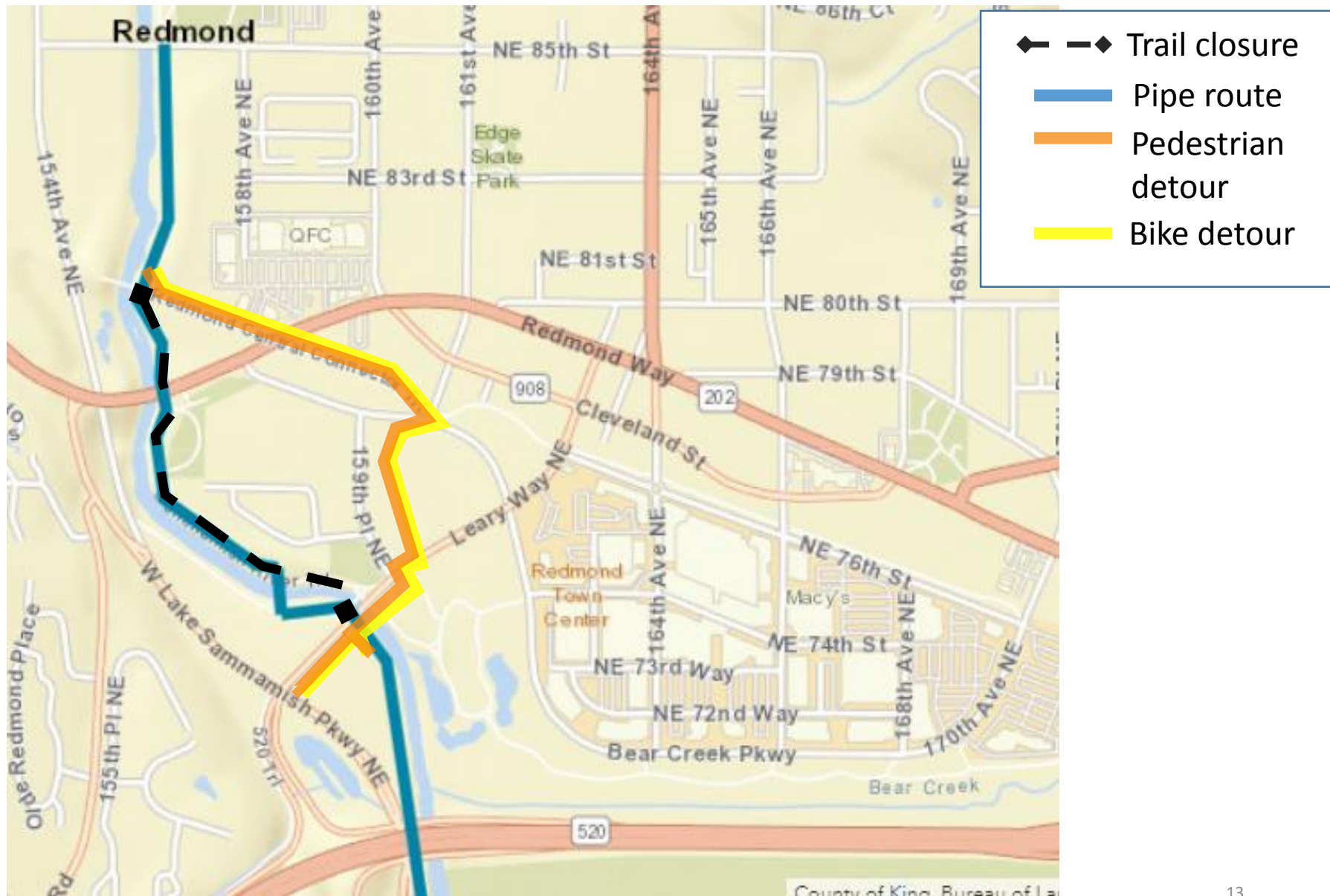




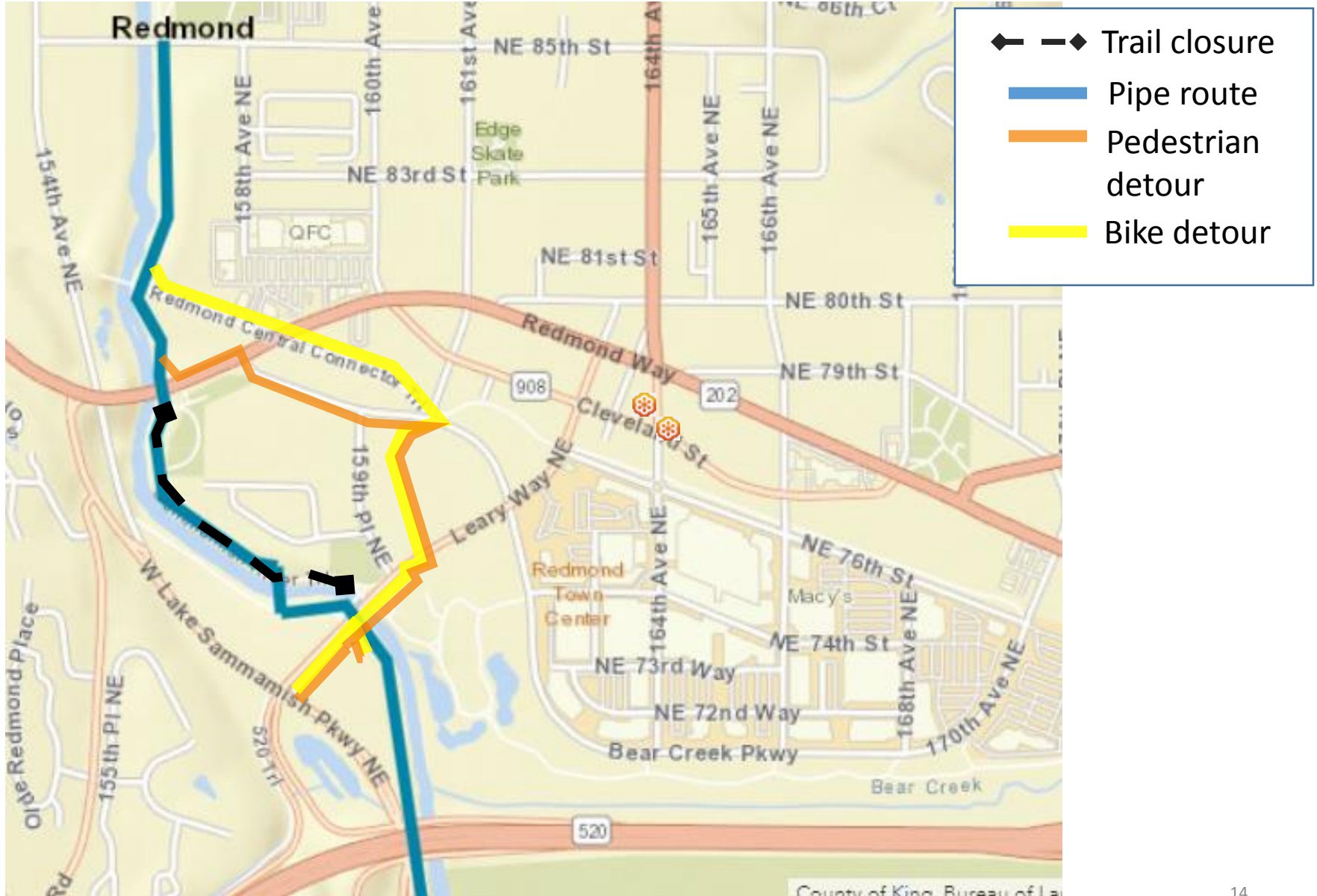
# Closure: Redmond Central Connector



# Closure: Central Connector to Leary Way

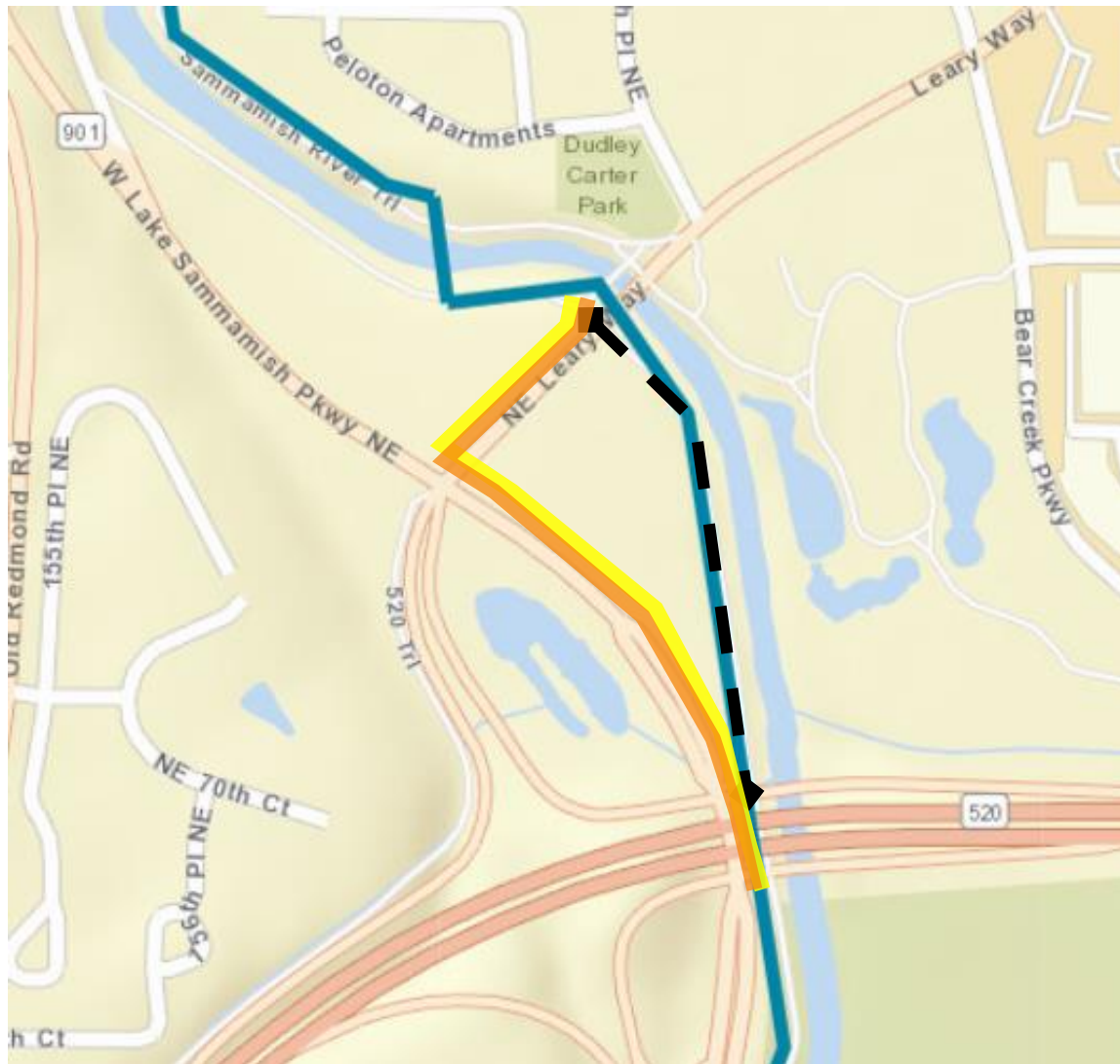


# Closure: Redmond Way to Leary Way



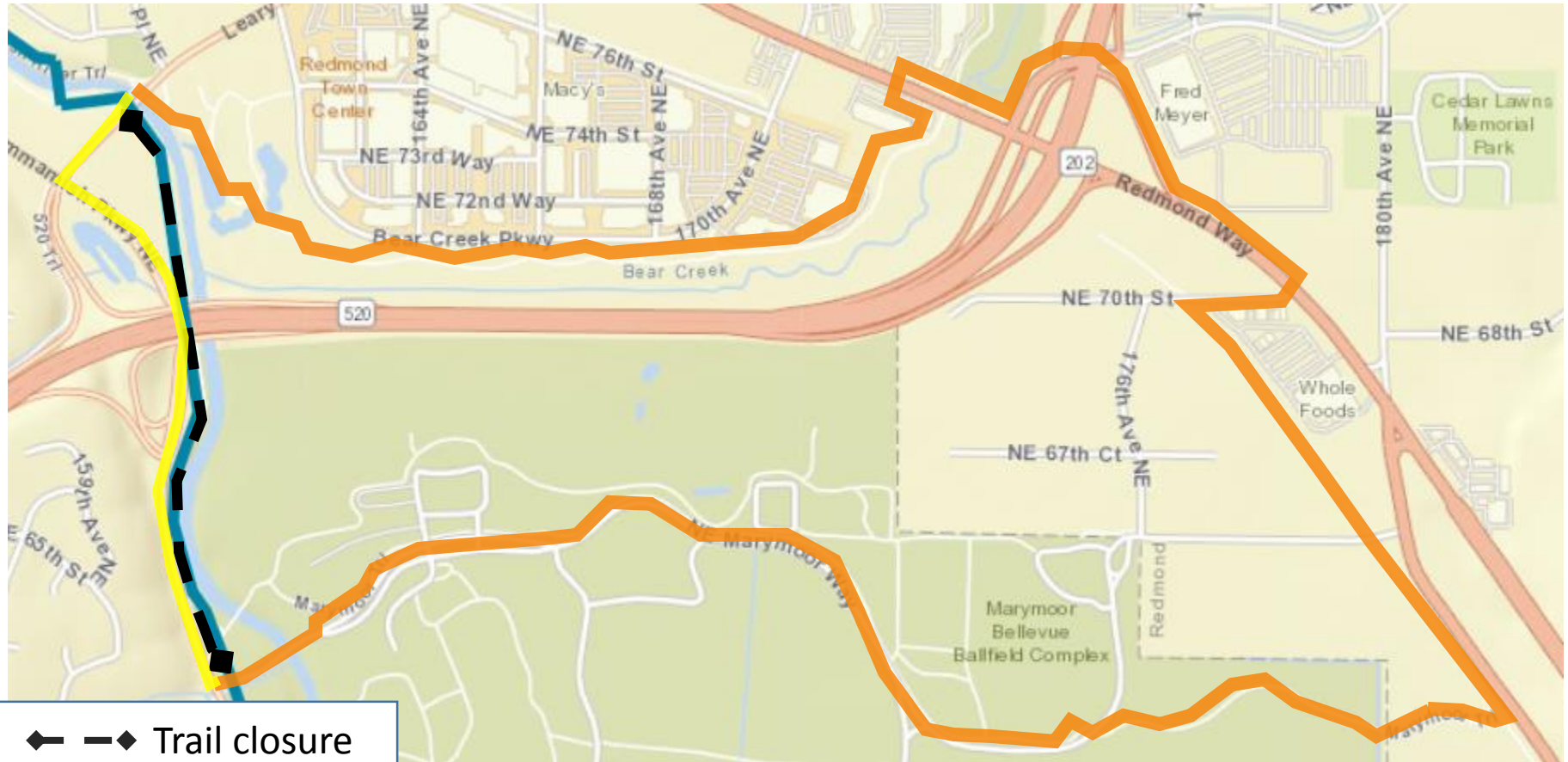


# Closure: Leary Way to SR 520



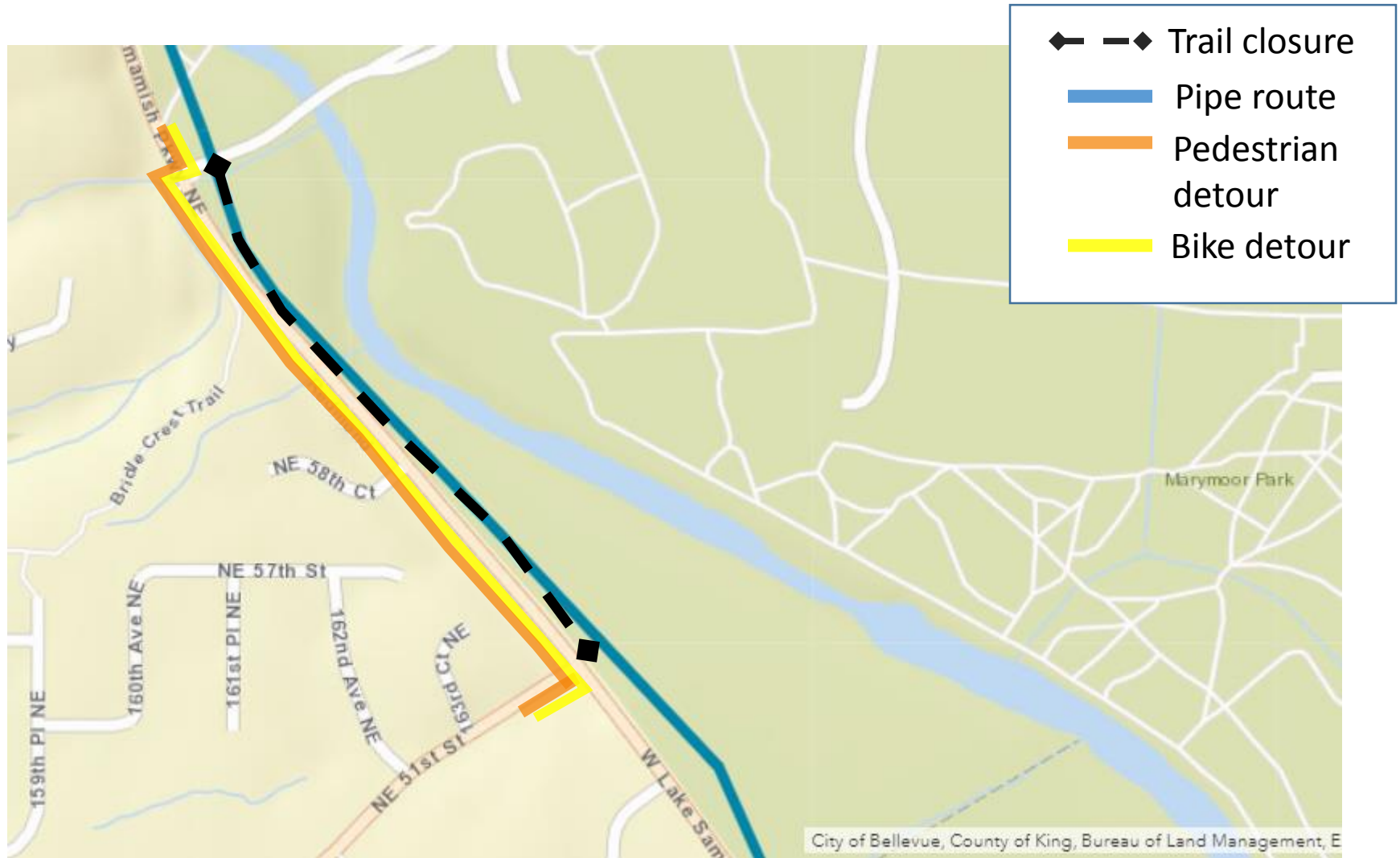
- ◆ - ◆ Trail closure
- Pipe route
- Pedestrian detour
- Bike detour

# Closure: Leary Way to Marymoor Park Entrance



- ◆ —◆ Trail closure
- Pipe route
- Pedestrian detour
- Bike detour

# Closure: Marymoor Park Entrance to NE 51st St







## Lake Hills and NW Lake Sammamish Sewer Upgrade Project

### Trail Restoration

- Maintenance holes to be relocated off of trail where possible
- Trees and shrubs to be replanted per guidelines set by City of Redmond and partner agencies





## Lake Hills and NW Lake Sammamish Sewer Upgrade Project

### Trail Restoration

- Affected areas to be repaved to at least existing extent
- Trail to be moved away from river where possible
- Trail to be widened between NE 85th Street and Leary Way



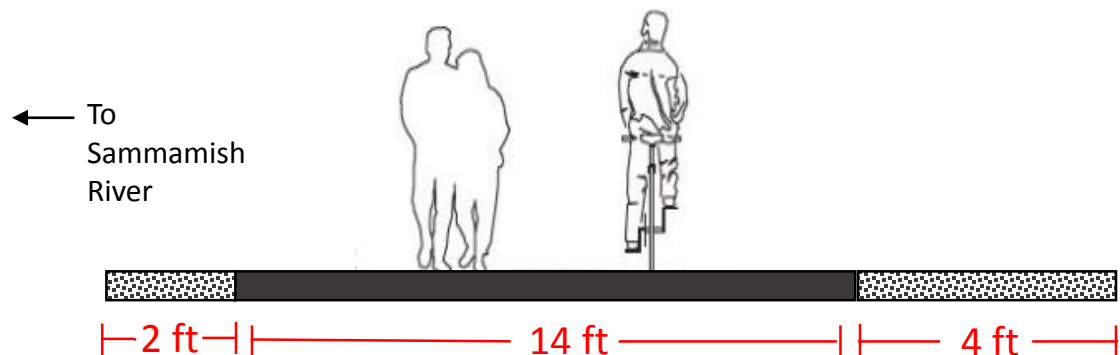
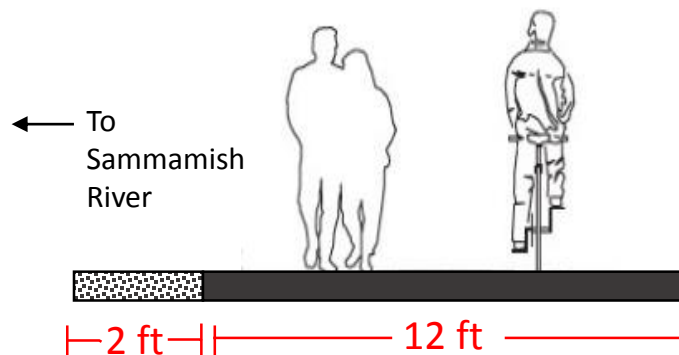


# Lake Hills and NW Lake Sammamish Sewer Upgrade Project

## Sammamish trail widening: NE 85th St to Leary Way

### Existing width

### Planned width



Paved trail



Crushed gravel shoulder





## **Lake Hills and NW Lake Sammamish Sewer Upgrade Project**

### What's next?

- Conduct additional fieldwork
- Acquire necessary permits
- Complete design by 2020
- Hire contractor in late 2020
- Begin construction in 2021



## Lake Hills and NW Lake Sammamish Sewer Upgrade Project

### Our commitment to you

- Keep you up to date and informed
- Address concerns, answer questions
- Whenever possible, use your feedback to shape the design
- No surprises during construction





## Lake Hills and NW Lake Sammamish Sewer Upgrade Project

### Questions and comments

- **Contact** Kelly Foley Kruse, community relations at 206-477-8621 or [kelly.foleykruse@kingcounty.gov](mailto:kelly.foleykruse@kingcounty.gov)
- **Visit** the project website at:  
[www.kingcounty.gov/KCRedmondSewer](http://www.kingcounty.gov/KCRedmondSewer)
- **Sign up** for email updates on our website
- **Enroll** in text alerts: text **KING REDMONDSEWER** to **486-311**