

Sammamish River Trail





Lake Hills and NW Lake Sammamish Sewer Upgrade Project

Closures & detours

- Intermittent closures over 3-year construction window
- Work will be completed in sections and may not be consecutive
- Closures will be between access points, requiring off-site detour routes
- Detour routes will vary between a half-mile to a few miles in length



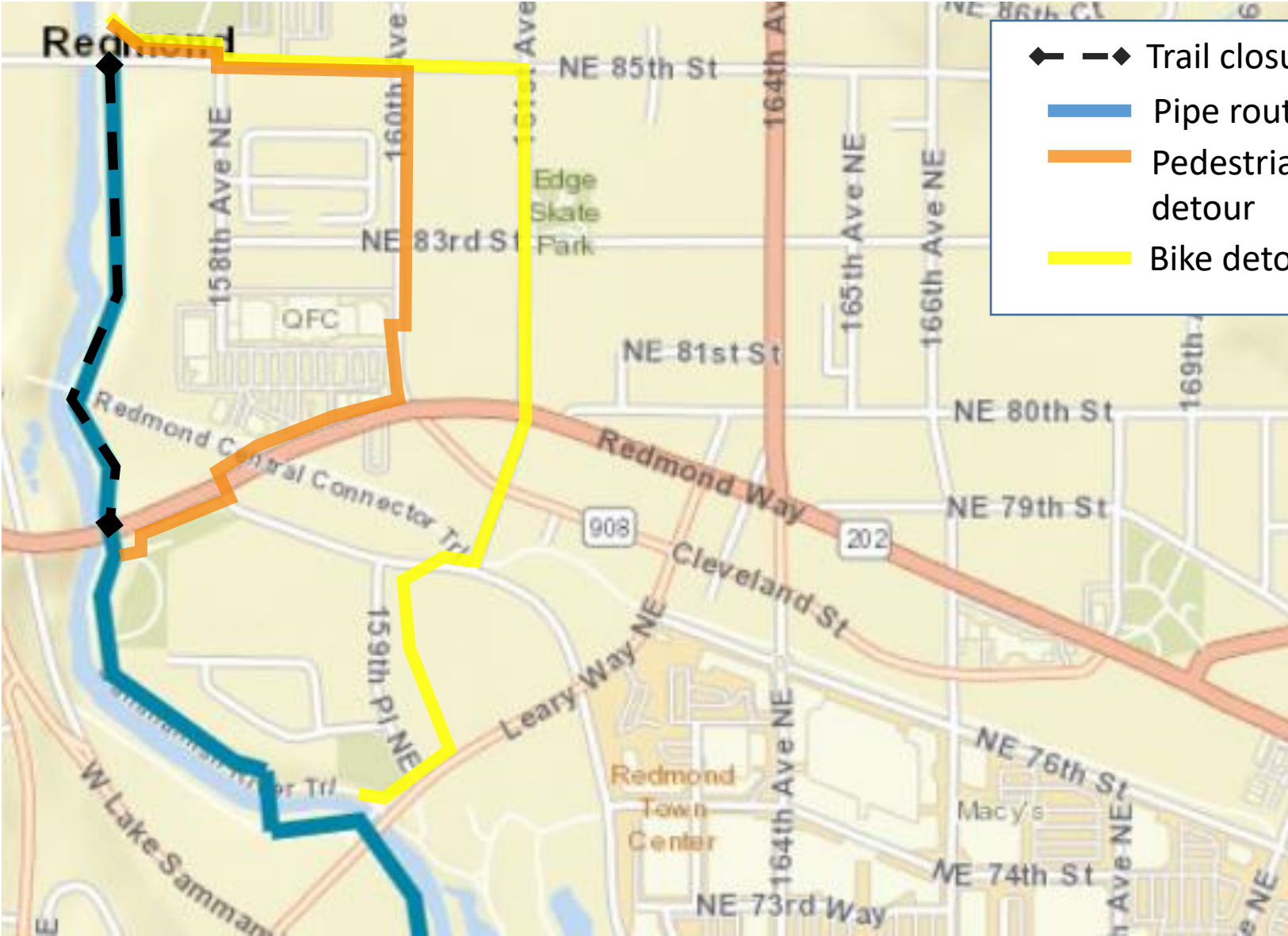


Lake Hills and NW Lake Sammamish Sewer Upgrade Project

Detour guidelines

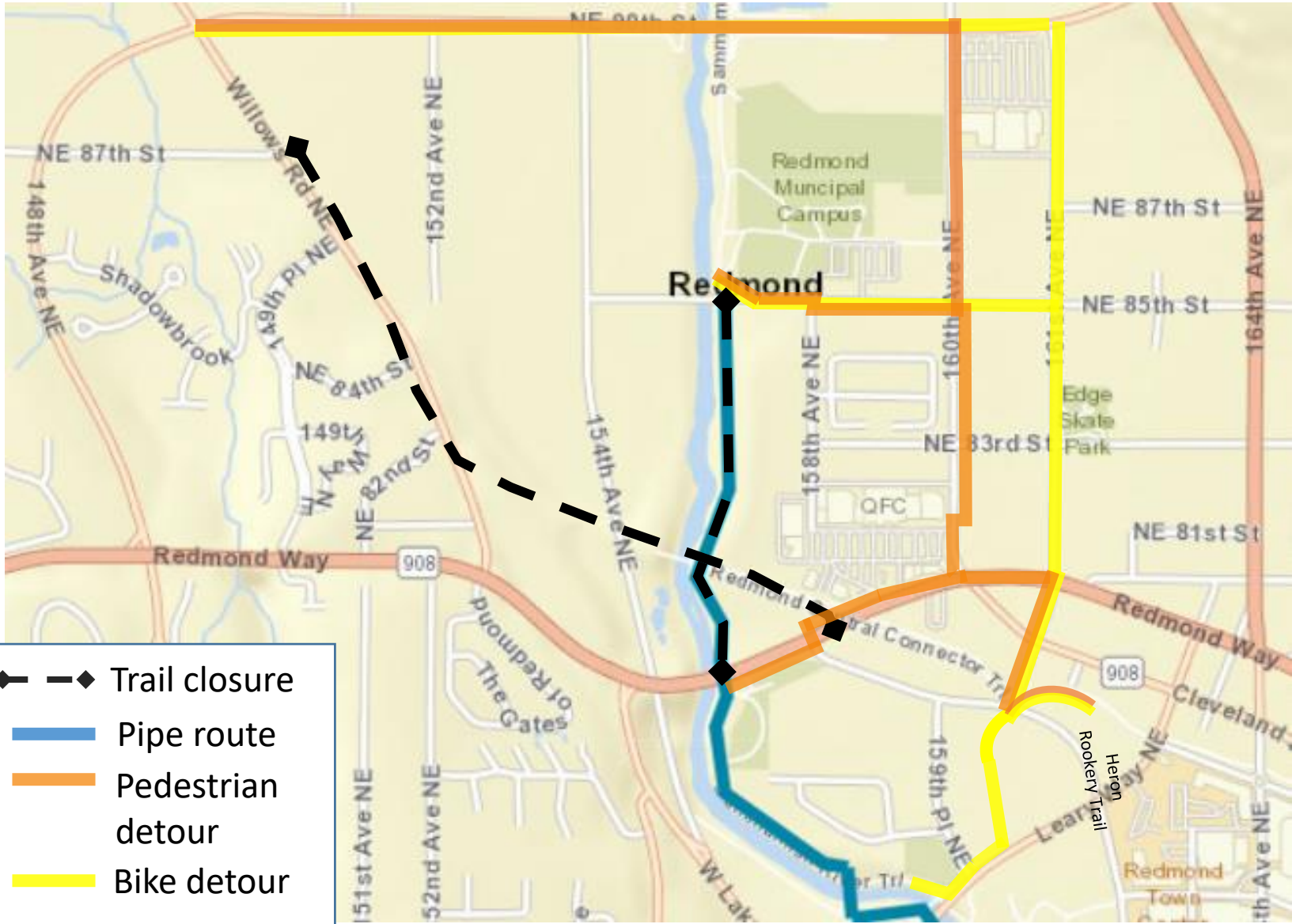
- Pedestrians
 - Provide detours that are ADA compliant
- Bikes
 - Sought to use established bike routes wherever possible
 - At some locations, bikes are directed to share sidewalks for short distances
- City of Redmond will ultimately review and approve all detour routes
- Contractor may wish to modify some of the detours. This would require approval from the City of Redmond

Closure: NE 85th St to Redmond Way

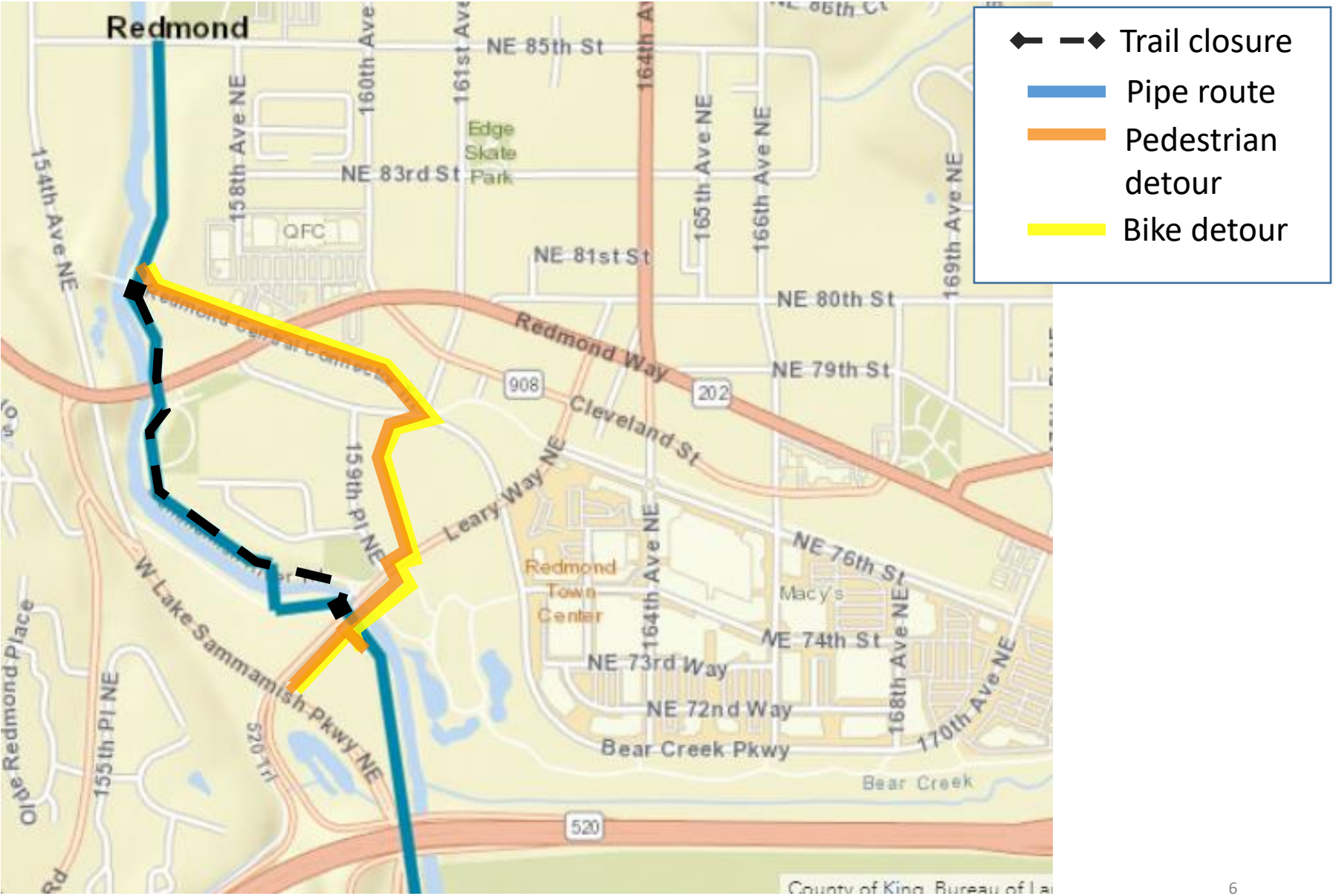


- ◆ - - ◆ Trail closure
- Pipe route
- Pedestrian detour
- Bike detour

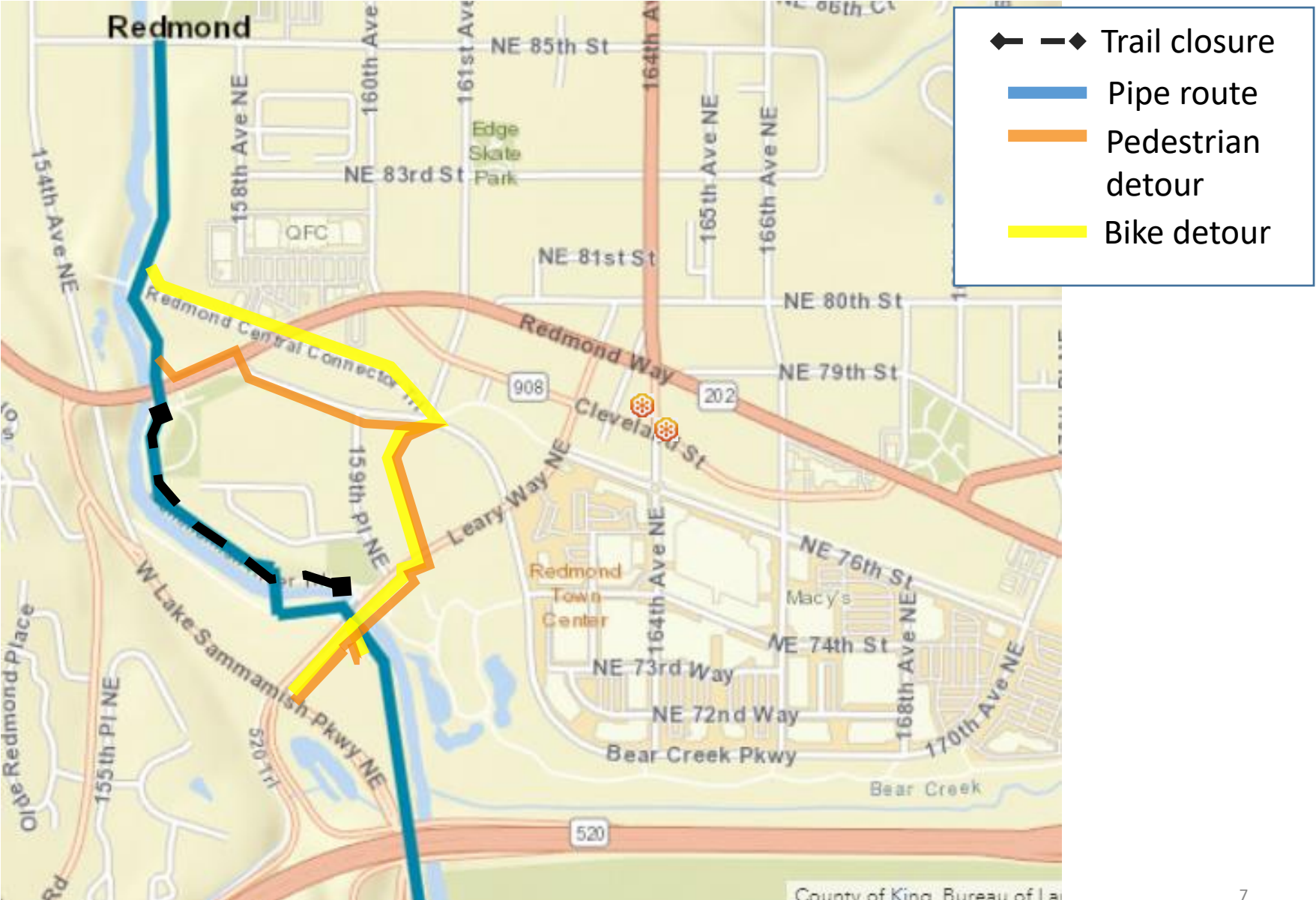
Closure: Redmond Central Connector



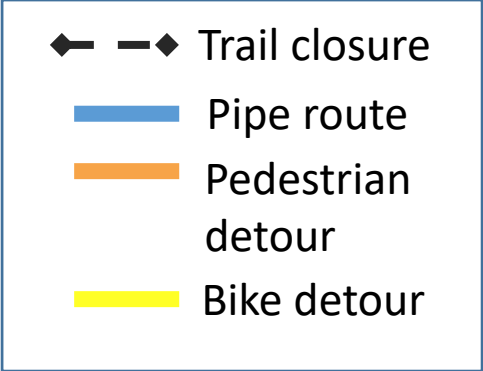
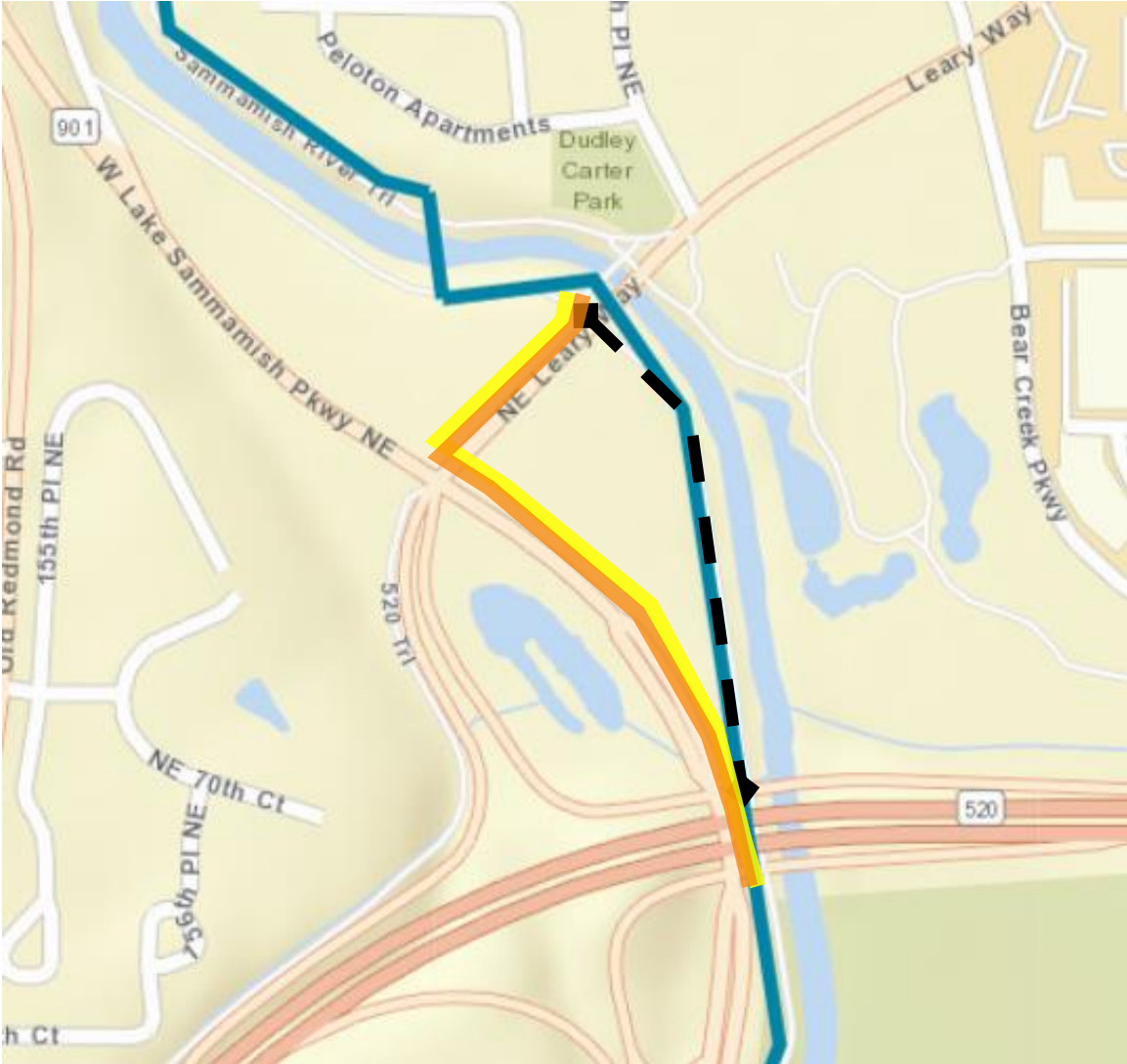
Closure: Central Connector to Leary Way



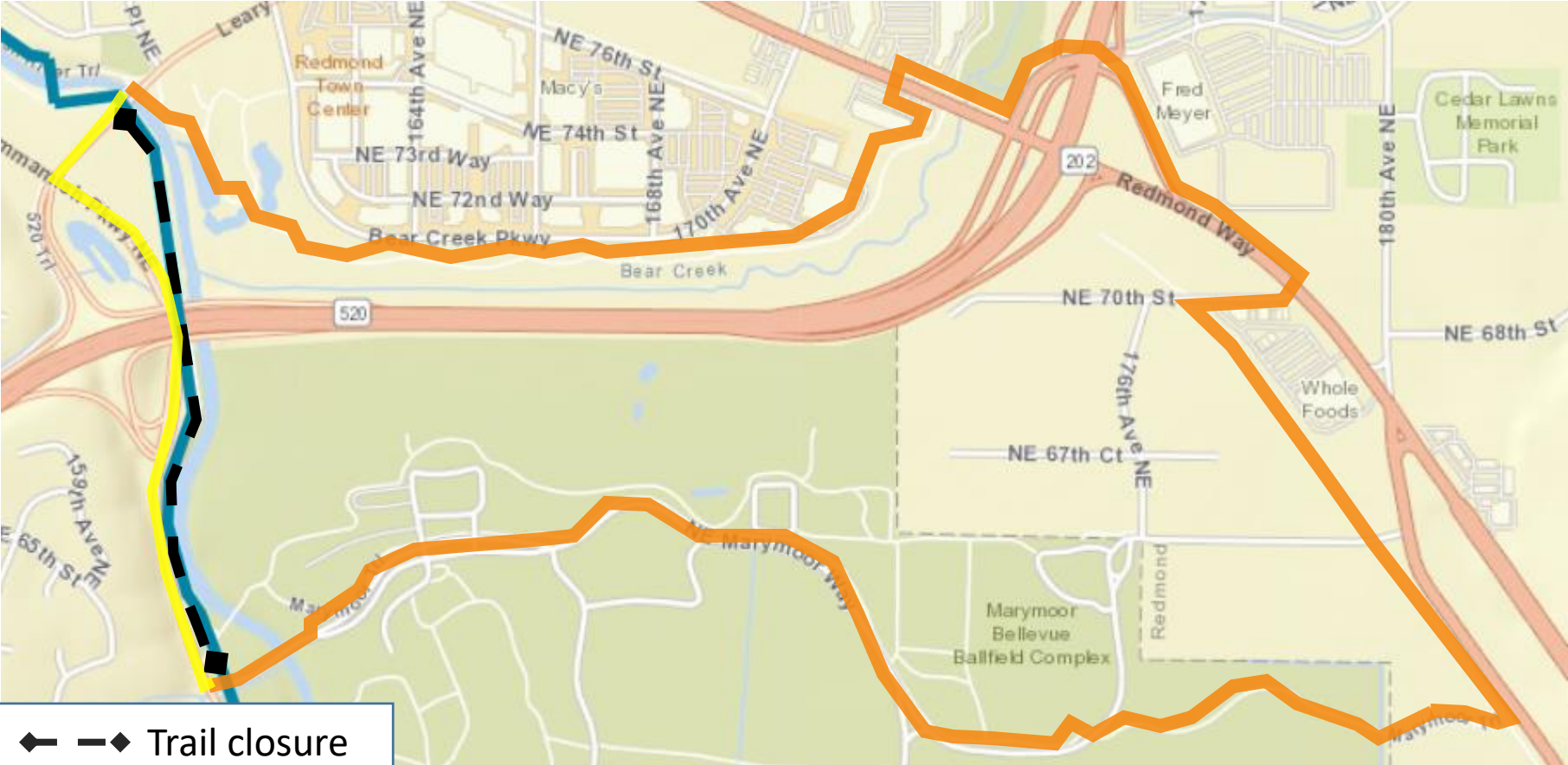
Closure: Redmond Way to Leary Way



Closure: Leary Way to SR 520

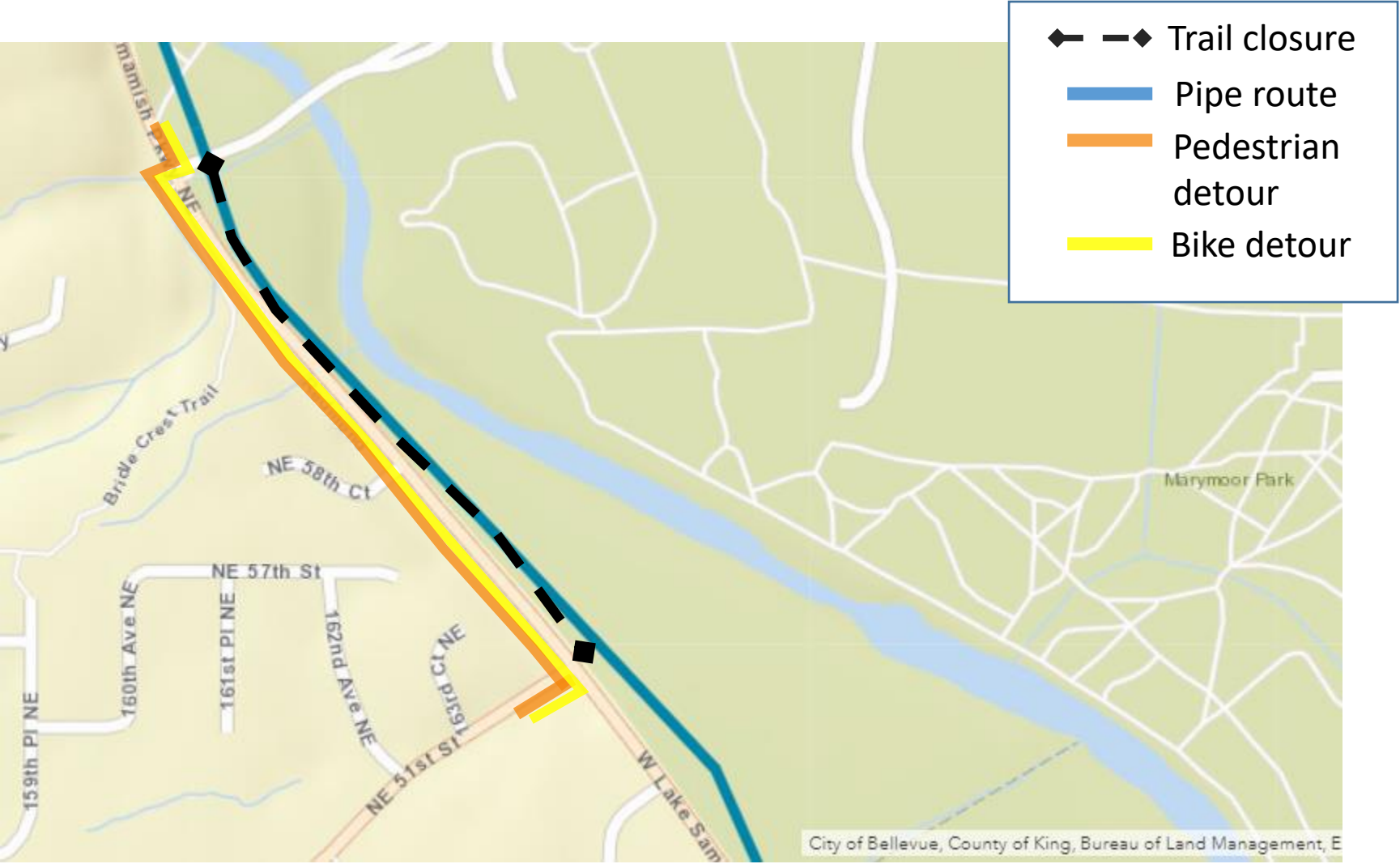


Closure: Leary Way to Marymoor Park Entrance



- ◆ - - ◆ Trail closure
- Pipe route
- Pedestrian detour
- Bike detour

Closure: Marymoor Park Entrance to NE 51st St





Lake Hills and NW Lake Sammamish Sewer Upgrade Project

Trail Restoration

- Maintenance holes to be relocated off of trail where possible
- Trees and shrubs to be replanted per guidelines set by City of Redmond and partner agencies





Lake Hills and NW Lake Sammamish Sewer Upgrade Project

Trail Restoration

- Affected areas to be repaved to at least existing extent
- Trail to be moved away from river where possible
- Trail to be widened between NE 85th Street and Leary Way



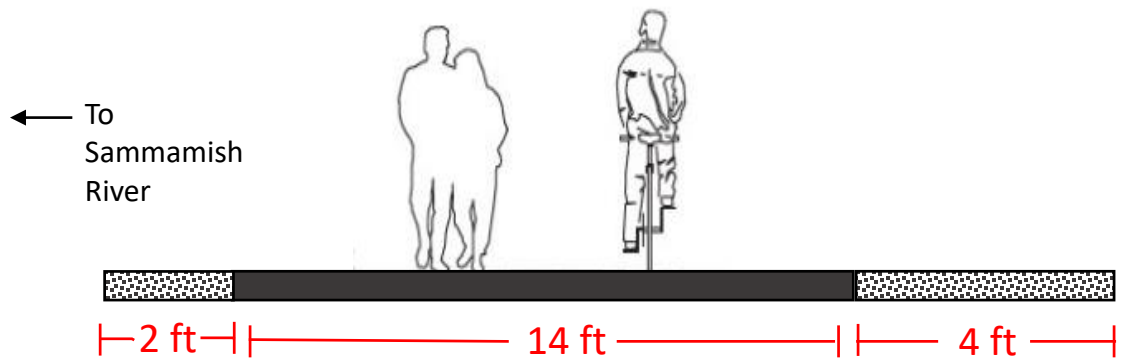
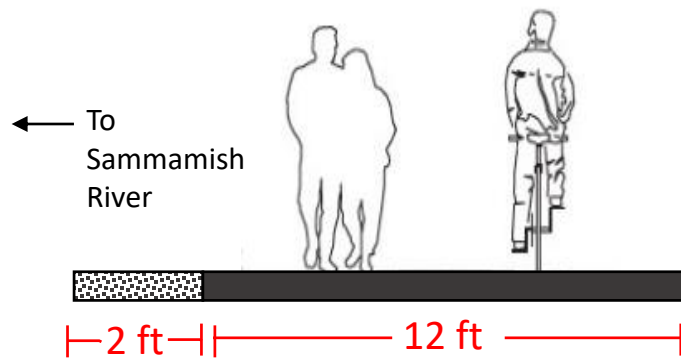


Lake Hills and NW Lake Sammamish Sewer Upgrade Project

Sammamish Trail widening: NE 85th St to Leary Way

Existing width

Planned width



■ Paved trail ■ Crushed gravel shoulder