

Expect delays and increased congestion on and near West Lake Sammamish Parkway beginning as early as August 31

Crews working for King County Wastewater Treatment Division are continuing fieldwork to support final design of the Lake Hills and NW Lake Sammamish Sewer Upgrade project. Starting as early as August 31, crews will dig potholes and use survey equipment to locate underground utilities along West Lake Sammamish Parkway N.E. and neighborhoods near N.E. 48th St, 172nd Ave N.E., N.E. 39th St., 180th Ave N.E., and N.E. 24th St. Potholing and survey activities are expected to take up to two weeks to complete. Surveying will follow potholing activities.



Typical vacuum truck used for potholing work.

Locations: See surveying locations on back page

What to expect:

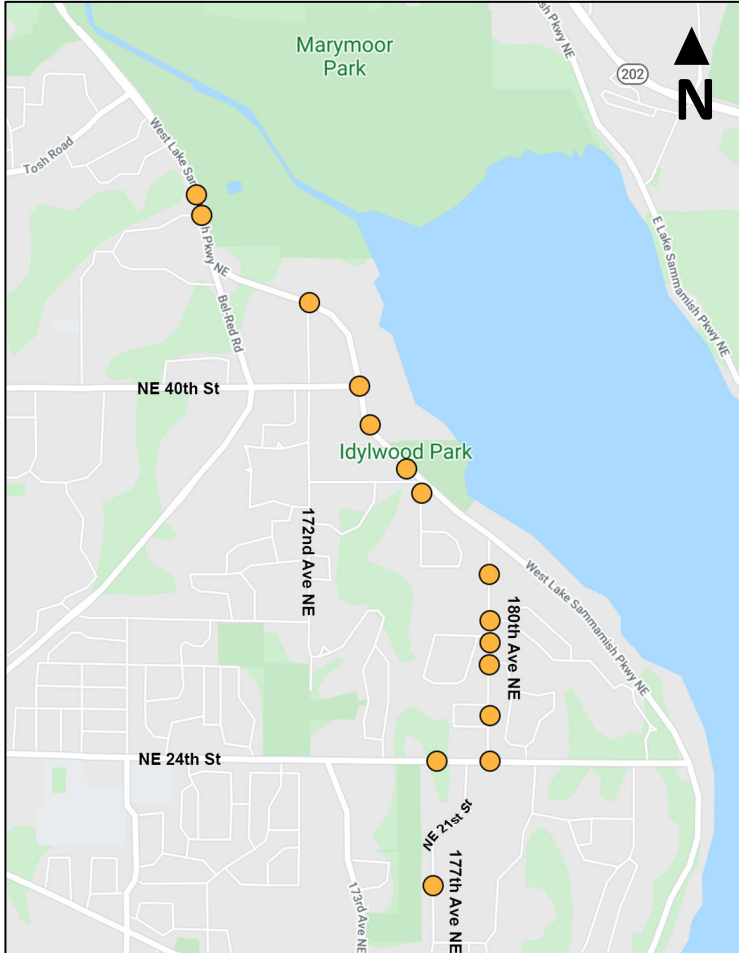
- Work hours 9:30 a.m. to 3 p.m., Monday through Friday
- A vacuum truck will be used to dig a small hole at each sampling location
- Expect increased noise when the vacuum truck is in use
- Potholing crews will spend up to one day at each pothole location
- Each location will be restored with grass, pavement or gravel after work is complete
- Survey crews will consist of two surveyors using hand carried survey equipment
- Majority of the work will be located outside of the driving lanes. For areas within the roadway, a single lane will be temporarily closed
- Delays of 5-10 minutes and increased congestion when work occurs within driving lanes
- Flaggers will queue drivers and bikers to safely direct traffic around the work zone
- Sidewalk and pedestrian walkways will be maintained
- Crews will be wearing personal protective equipment in accordance with current guidance from national public health and worker safety officials

Please watch for equipment and signs in the area, travel slowly to stay safe and follow direction from flaggers.



King County

Lake Hills and NW Lake Sammamish Sewer Upgrade Project



Example of survey crew and equipment. Crews will wear personal protective equipment that includes a face mask.

About the project

King County is working on a project to upgrade 4.5 miles of sewer pipe. King County will build the new pipe in trails, roads and parks in Redmond. Construction is expected to begin as early as 2022. When complete, the new pipe will provide sewer service for 50 years or more.

Legend



Approximate pothole and survey locations
*More than one hole may be drilled and surveyed at each location

For more information

- **Contact** Kristine Cramer at 206-477-5415 or kristine.cramer@kingcounty.gov
- **Sign up for text alerts.** Text KING REDMONDSEWER to 468-311
- **Visit** the project web page at www.kingcounty.gov/KCRedmondSewer
- **Follow** King County Wastewater Treatment Division on social media



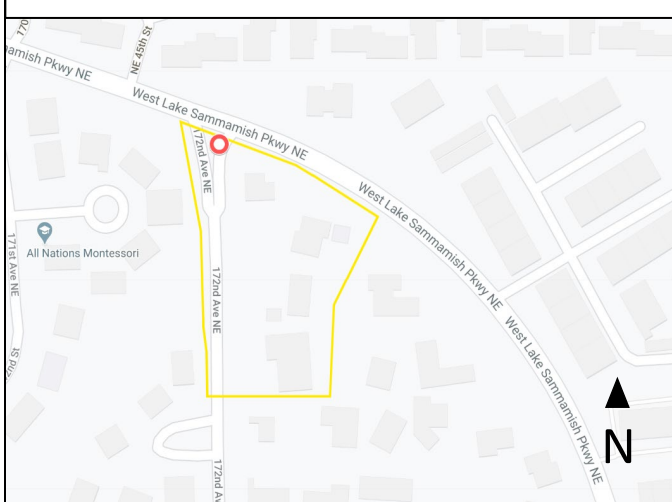
King County

Lake Hills and NW Lake Sammamish Sewer Upgrade Project

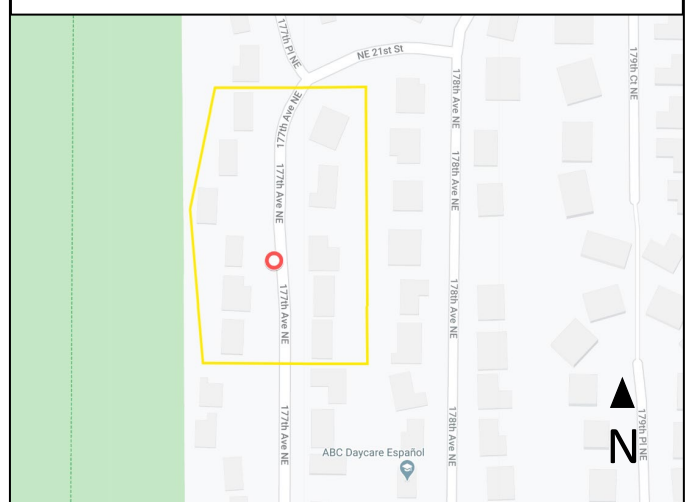
Zoomed in areas of survey and pothole locations beginning August 31

**Locations are approximate*

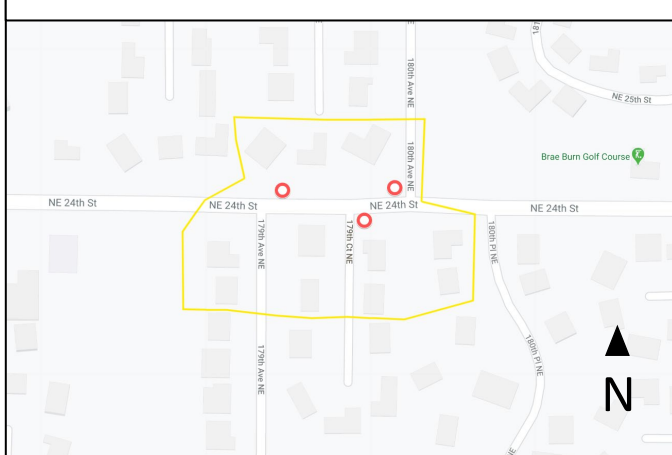
West Lake Sammamish Parkway and 172nd Avenue NE



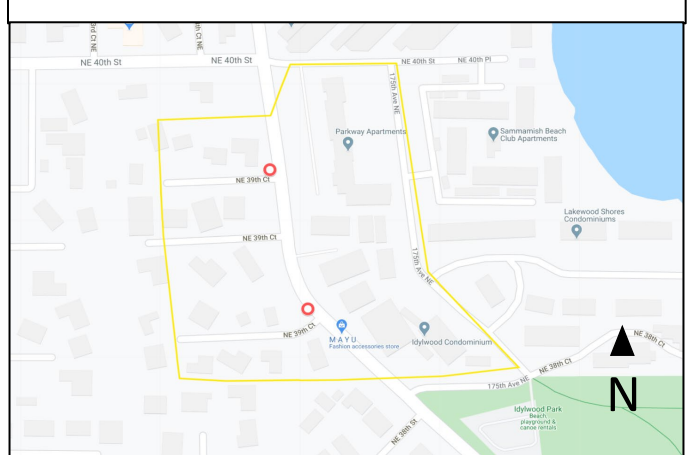
NE 21st Street and 177th Avenue NE



NE 24th Street and 179th Ave NE



West Lake Sammamish Parkway and NE 39th Court



West Lake Sammamish Parkway and NE 48th Street

