



Lake Hills and NW Lake Sammamish Sewer Upgrade Project

Virtual Neighborhood Meeting

September 30, 2021 | 5:30 - 7 p.m.

Please [use this link to sign-in virtually](#) while we wait to get started.



Lake Hills and NW Lake Sammamish Sewer Upgrade Project

Zoom meeting reminders

- Participants are automatically muted
- Use the Q&A feature to ask questions during the meeting by:
 - Typing into the Q&A Tool
 - Clicking on the Raise Hand feature to share a question or comment
 - Dialing #3 if calling from your phone
- Zoom interpretation channels
 - Click Interpretation on your control panel
 - Click the language that you would like to hear
 - To hear interpreted language only, click “Mute Original Audio”
- This meeting is being recorded



Lake Hills and NW Lake Sammamish Sewer Upgrade Project

Agenda

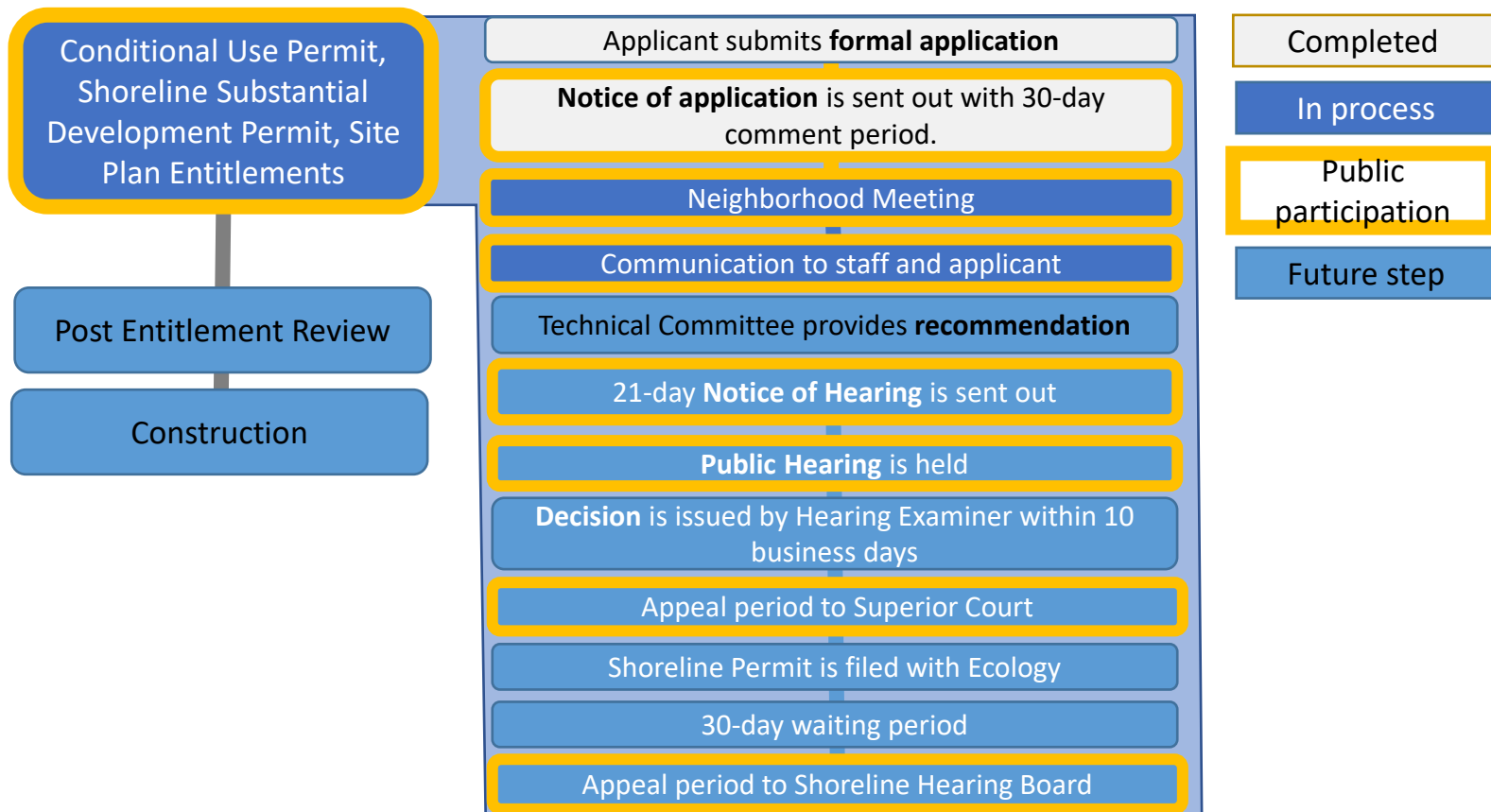
- Welcome
- City of Redmond permitting process
- Project overview
- What's new since 2020
- Next steps
 - 5 min break -
- Live Q&A session





Lake Hills and NW Lake Sammamish Sewer Upgrade Project

City of Redmond permitting process





King County

Lake Hills and NW Lake Sammamish Sewer Upgrade Project

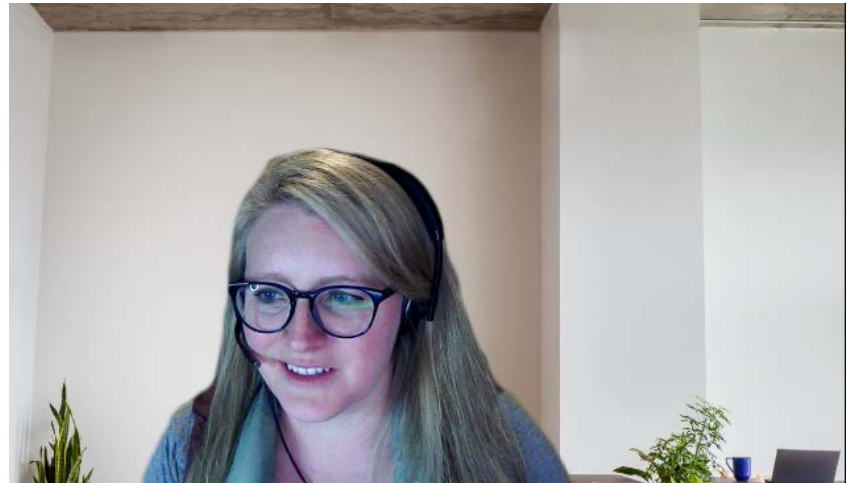
Andrea Clinkscales

Project Manager



Kelly Foley Kruse

Community Relations Planner





King County

Lake Hills and NW Lake Sammamish Sewer Upgrade Project

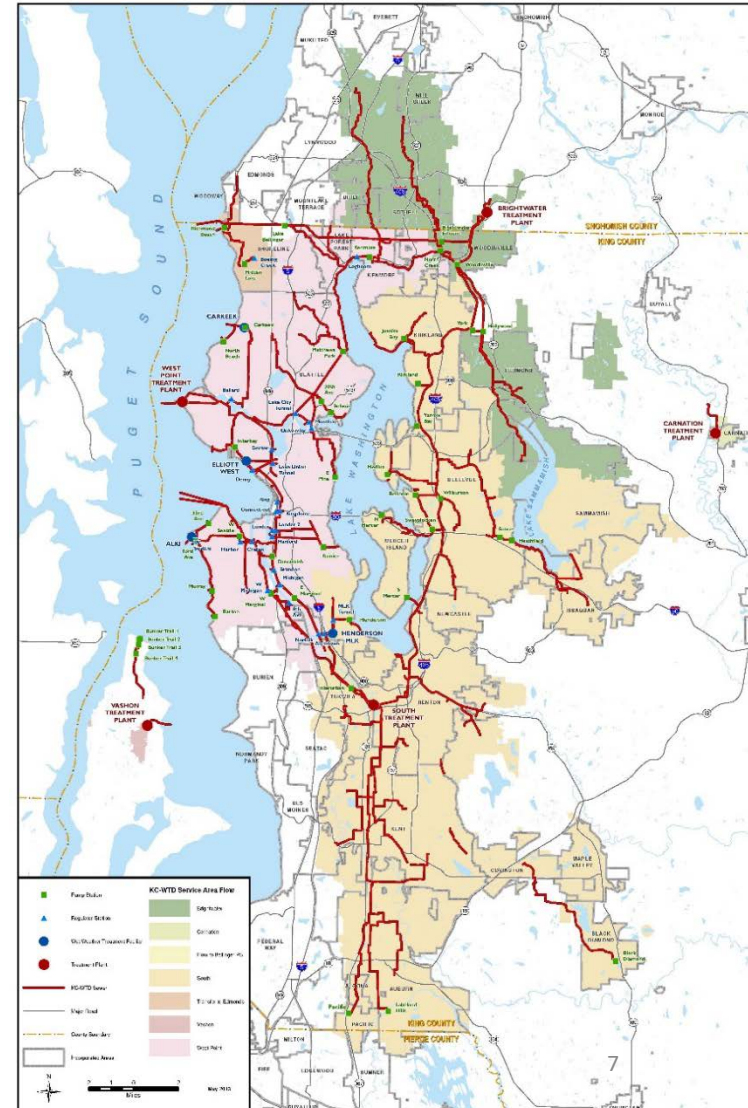
Overview



Lake Hills and NW Lake Sammamish Sewer Upgrade Project

King County WTD

- 1.9 million people served
- 34 local sewer agencies
- 424 square mile area served
- 5 treatment plants
- 391 miles of pipe
- 185 million gallons sewage treated/day





Project objective

- Upgrade 4.5 miles of sewer pipes in Redmond to provide service for another 50+ years



Lake Hills and NW Lake Sammamish Sewer Upgrade Project

Project timeline



City of Redmond permit process

We are here

*This is an estimated project timeline and is likely to shift over the course of the project.



Lake Hills and NW Lake Sammamish Sewer Upgrade Project

Construction expected to begin in 2024

- Primarily open trench construction
 - Ideal for shallow work zones
 - Surface impacts will include traffic and trail detours
- Trenchless construction
 - Protects environmentally sensitive areas
 - Limits surface impacts
 - Not appropriate for all situations



A crew member is standing in an open trench area.



Lake Hills and NW Lake Sammamish Sewer Upgrade Project

What to expect in construction

- Typical work hours
 - 7 a.m. to 7 p.m. weekdays
 - 9 a.m. to 6 p.m. Saturday
- Large equipment, truck traffic
- Noise, vibration, and dust
- Road closures and detours
- Trail closures and detours
- Vegetation removal and replacement





King County

Lake Hills and NW Lake Sammamish Sewer Upgrade Project

Our commitment to you





King County

Lake Hills and NW Lake Sammamish Sewer Upgrade Project

What's new since 2020



Lake Hills and NW Lake Sammamish Sewer Upgrade Project

Minor route changes

- **NE 85th Street extension, east of Sammamish River Bridge**
- 177th Ave NE between West Lake Sammamish Parkway and NE 33rd Place

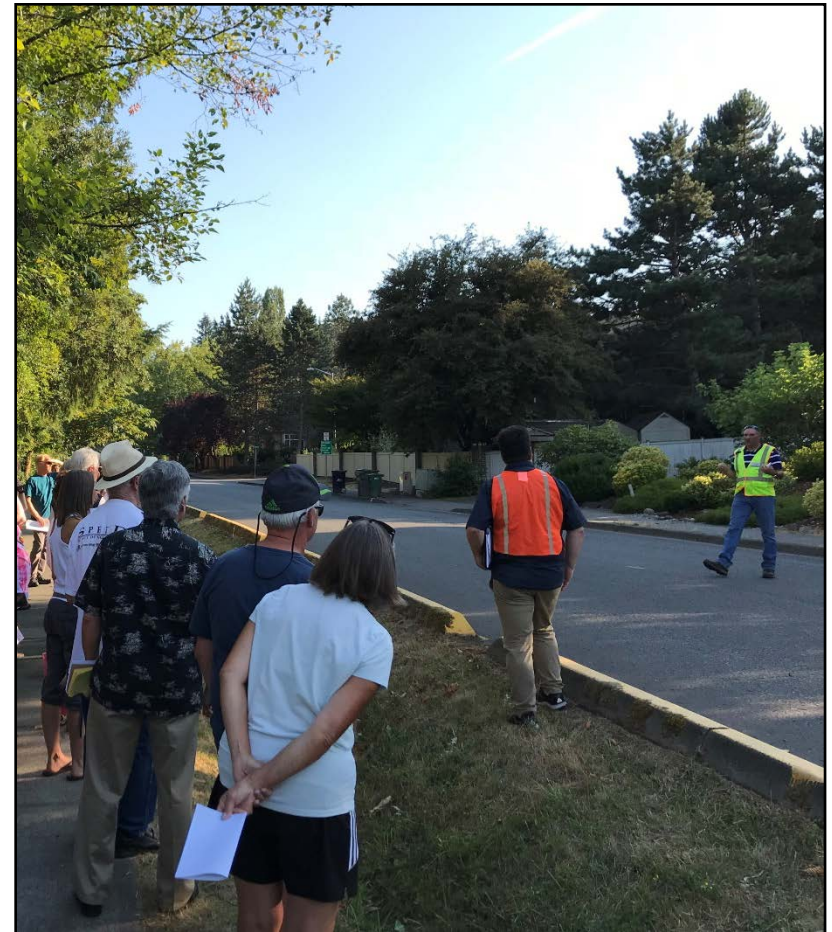




Lake Hills and NW Lake Sammamish Sewer Upgrade Project

Minor route changes

- NE 85th Street extension, east of Sammamish River Bridge
- **177th Ave NE between West Lake Sammamish Parkway and NE 33rd Place**



Tree removal and replacement

- Removing ~680 trees (includes 548 in the City of Redmond)
- Replanting ~1,367 trees
 - 338 trees on-site
 - 1,251 trees off-site
- Replanting plans in the City of Redmond still under discussion



Lake Hills and NW Lake Sammamish Sewer Upgrade Project

Replanting





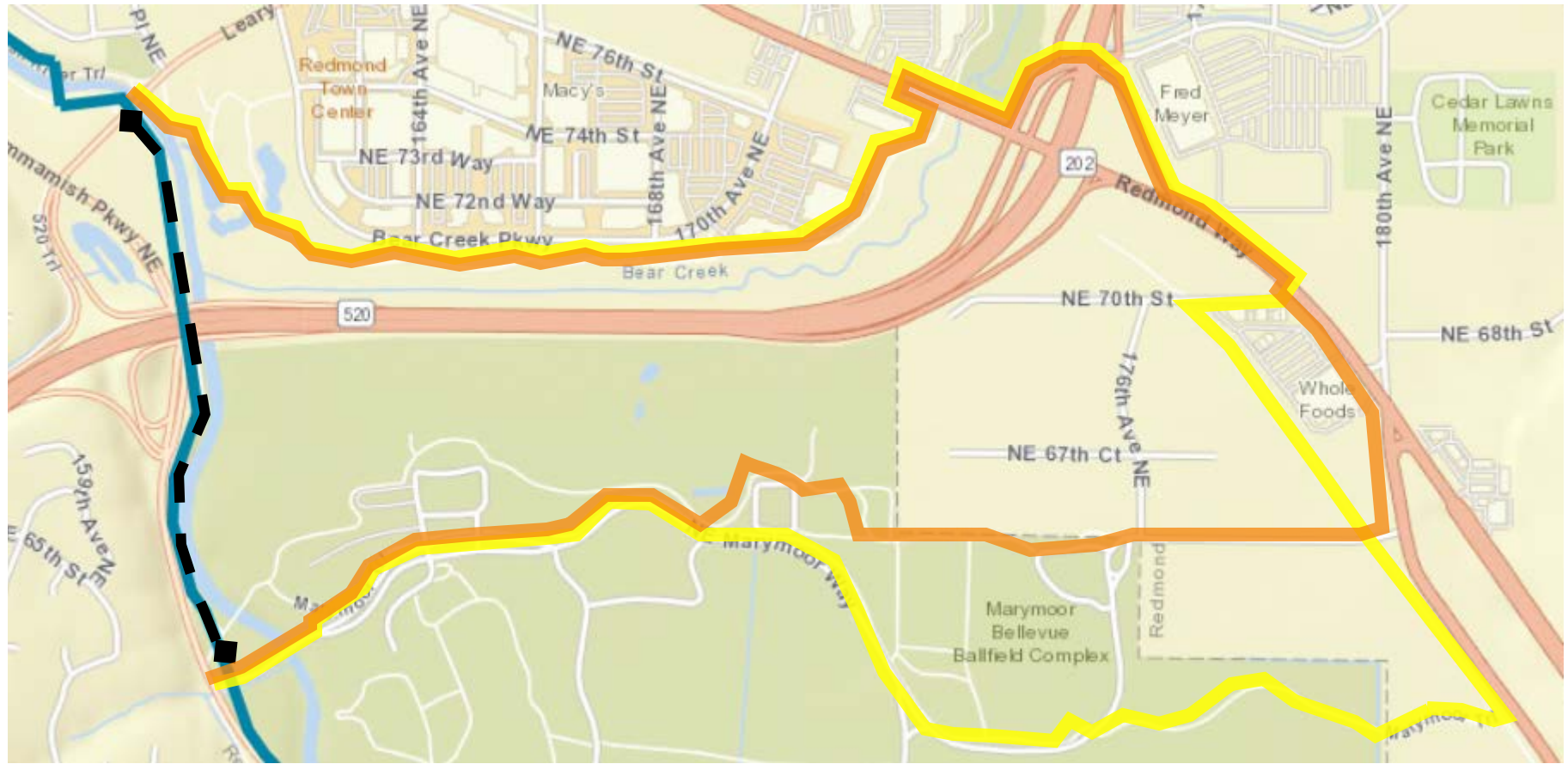
Lake Hills and NW Lake Sammamish Sewer Upgrade Project

Sammamish River Trail closures & detours

- Intermittent closures over 3-year construction window
- Work will be completed in sections and may not be consecutive
- Closures will be between access points, requiring off-site detour routes

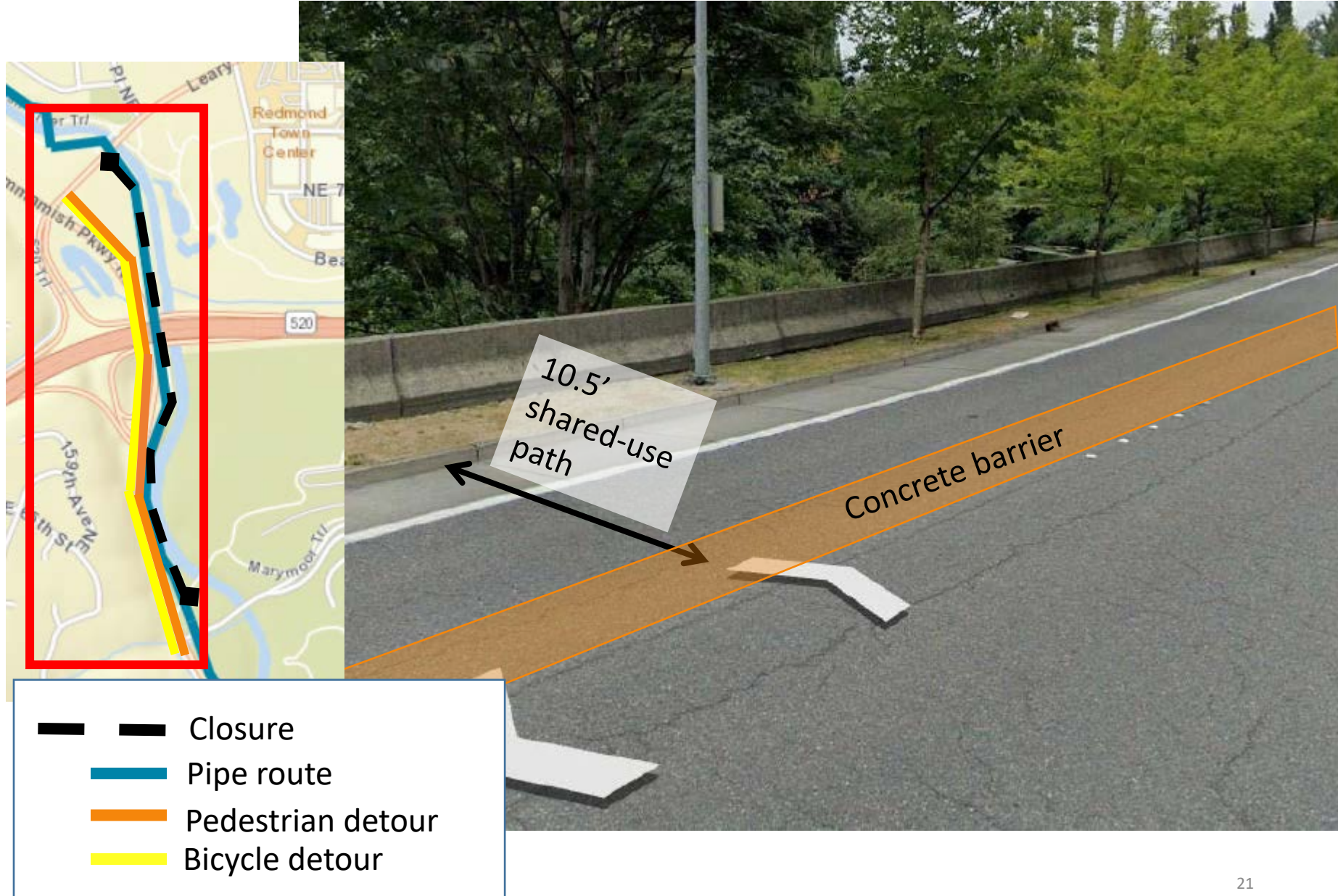


Old detour route: Leary to Marymoor Way



- | | |
|---|--|
|  Pipe route |  Closure |
|  Pedestrian detour |  Bicycle detour |

New detour route: Leary to Marymoor Way



New detour route: Leary to Marymoor Way



- Closure
- Pipe route
- Pedestrian detour
- Bicycle detour



Lake Hills and NW Lake Sammamish Sewer Upgrade Project

Trail restoration





Lake Hills and NW Lake Sammamish Sewer Upgrade Project

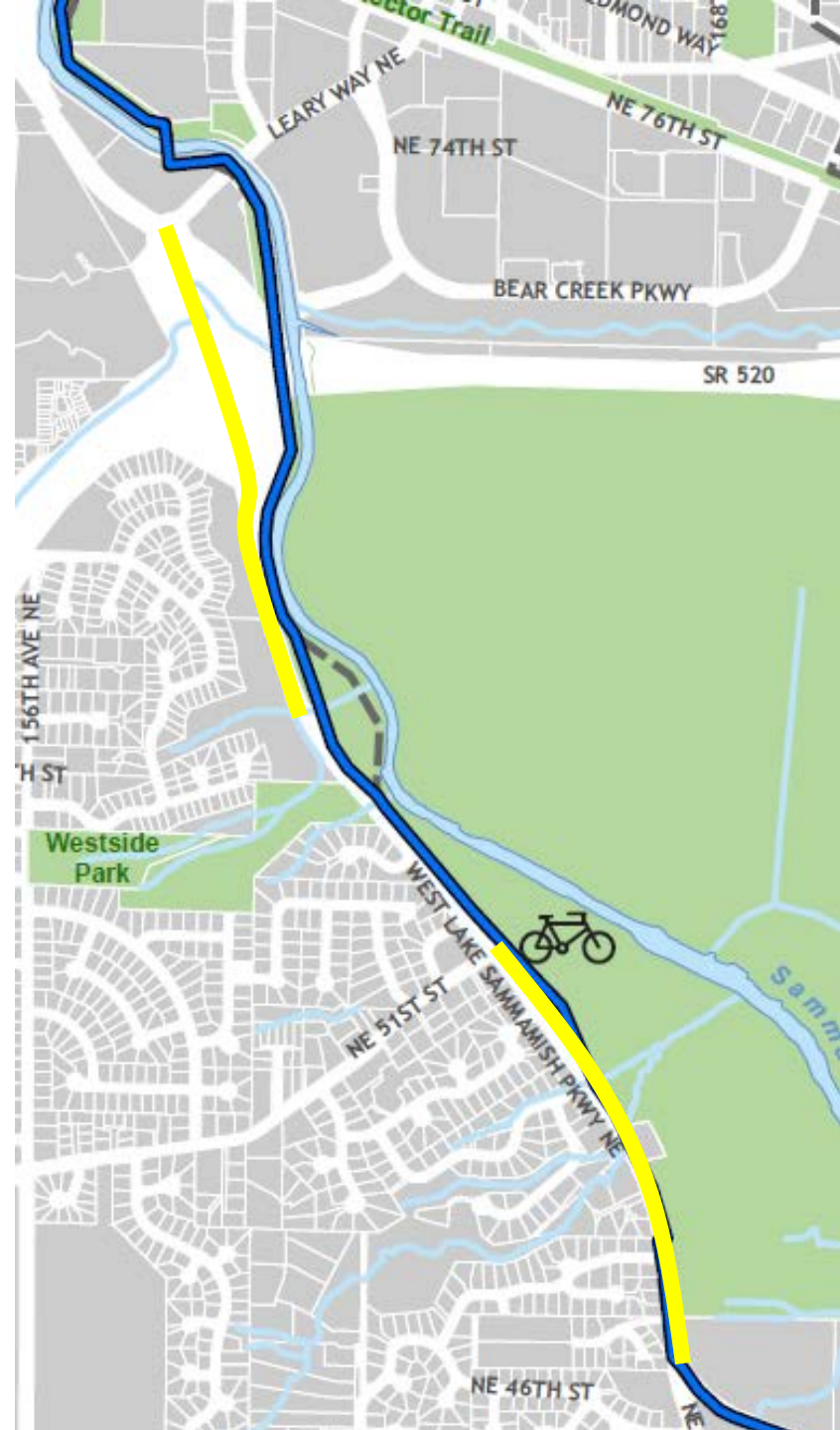
Traffic impacts

- Sewer runs under:
 - West Lake Sammamish Parkway
 - 177th Ave NE
 - 179th Ave NE
 - NE 24th St
 - 180th Ave NE
- Expect delays, congestion, lane closures, detours
- Plans can be renegotiated between contractor and the City of Redmond
- Emergency and local access always maintained



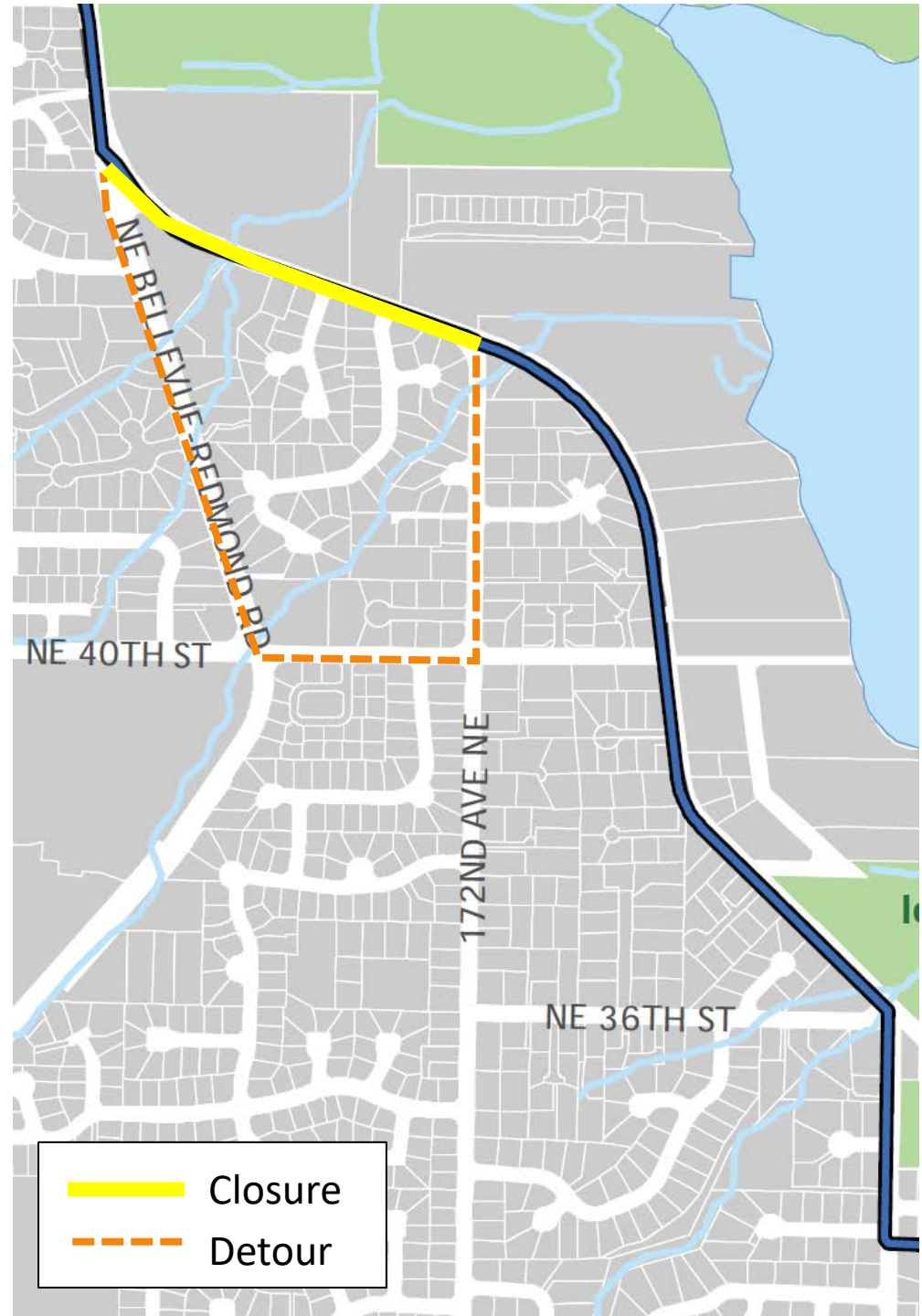
West Lake Sammamish Parkway (WLSP)

- Leary Way to Marymoor Way
 - Northbound vehicle lane closure during trail work
- NE 51st Street to Bel-Red Rd
 - One lane of traffic maintained in each direction
 - Bikes merge with traffic
 - Restricted work hours in Bel-Red Rd intersection



West Lake Sammamish Parkway (WLSP)

- Bel-Red Rd to 172nd Ave NE during sewer construction
 - Will maintain northbound only traffic. Bikes merge with traffic
 - Southbound vehicles and bikes detoured
- Bel-Red Rd to 172nd Ave NE during culvert construction
 - Full road closure
 - Local and emergency access always maintained

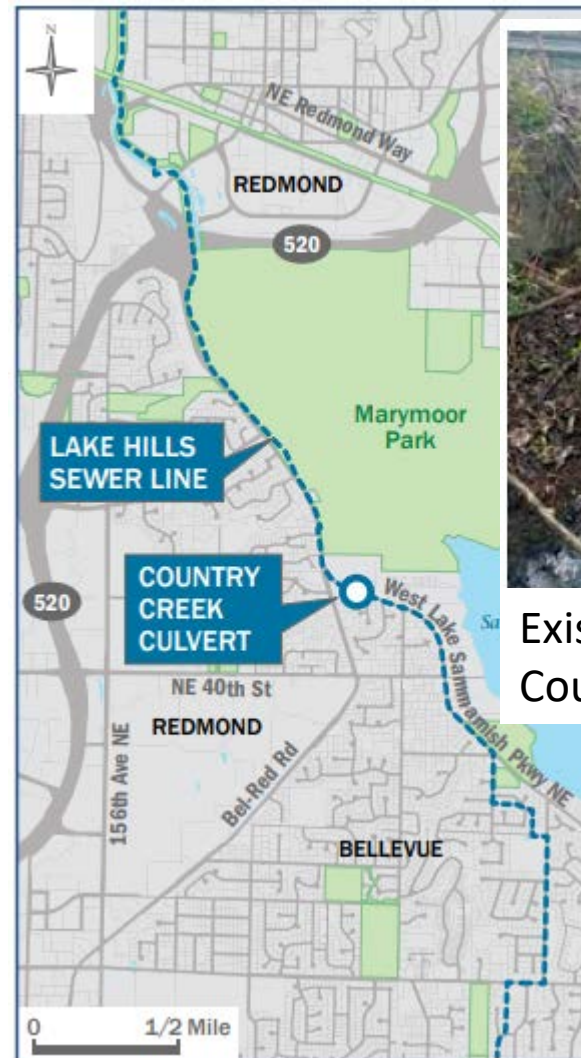




Lake Hills and NW Lake Sammamish Sewer Upgrade Project

Country Creek culvert

- Partnering with the City of Redmond to improve the existing culvert so fish can swim through it



Existing culvert at Country Creek

Example of culvert construction

Video provided courtesy of the Washington Department of Transportation (WSDOT)





Lake Hills and NW Lake Sammamish Sewer Upgrade Project

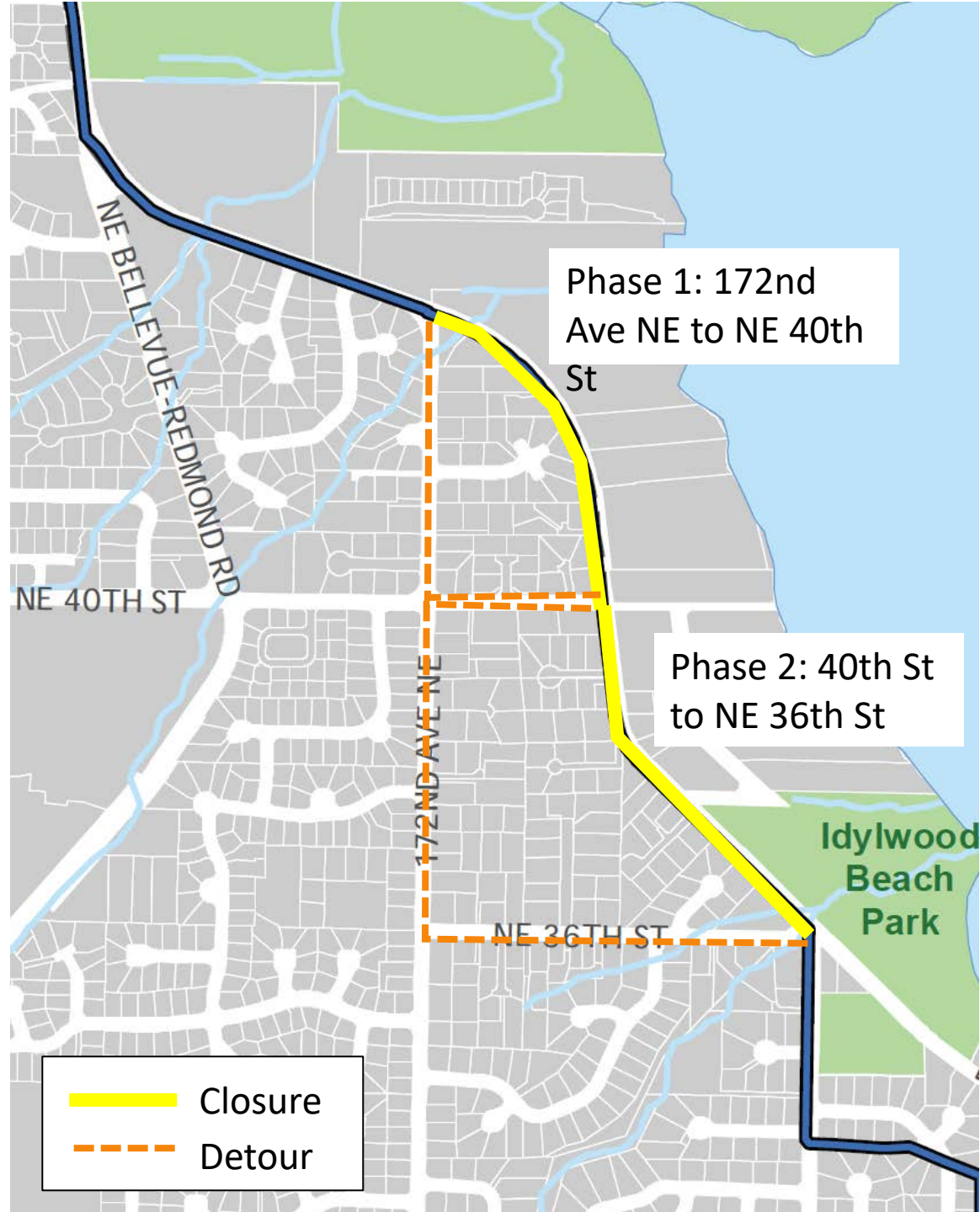
Country Creek culvert

- Improved design to include:
 - Two-lane roadway
 - Bike lanes and curbs on both sides
 - Planter strip and 12-ft-wide shared use path on north side of road

New 12-ft-wide path and planter strip

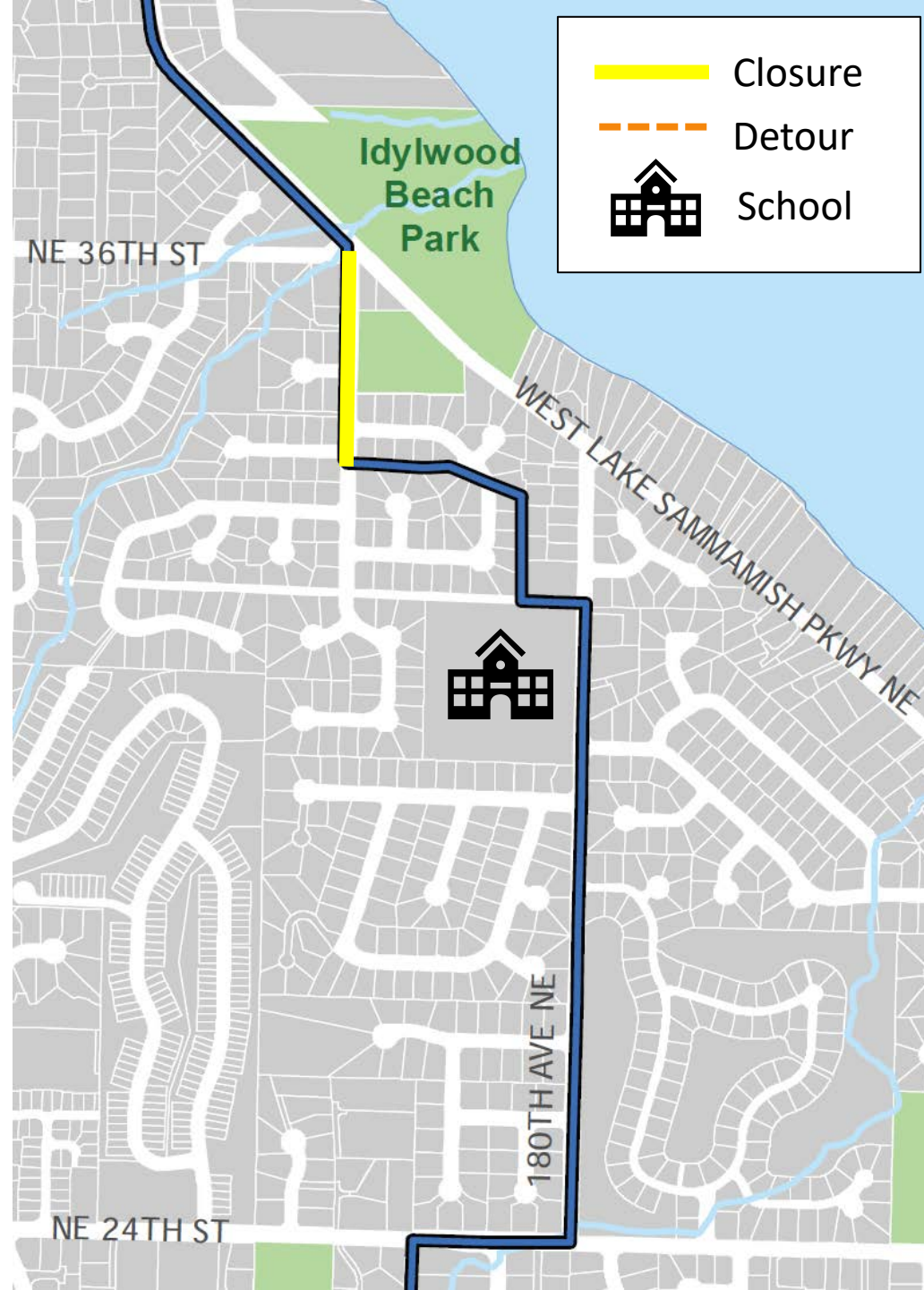
West Lake Sammamish Parkway (WLSP)

- 172nd Ave NE to NE 36th St
 - 2-phased, full closure during working hours
 - Local and emergency access always maintained
 - One lane in both directions of traffic will be restored outside of working hours (nights and weekends)



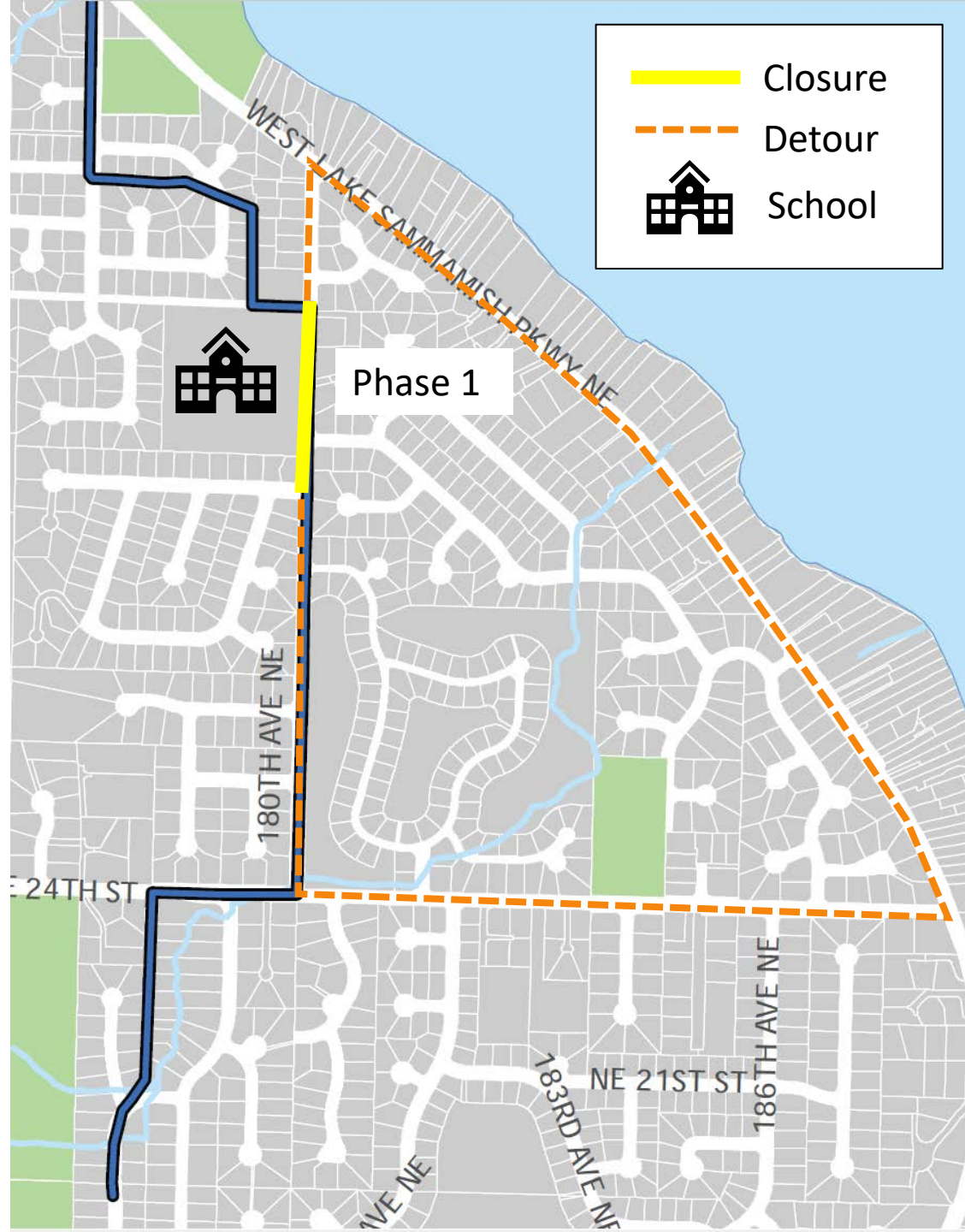
Idylwood neighborhood

- Idylwood Park
 - One parking lot to always remain open
 - Memorial Day to Labor Day: No work in front of parking lot entrances
- 177th Ave NE
 - One lane will remain open with flaggers to maintain both directions of traffic



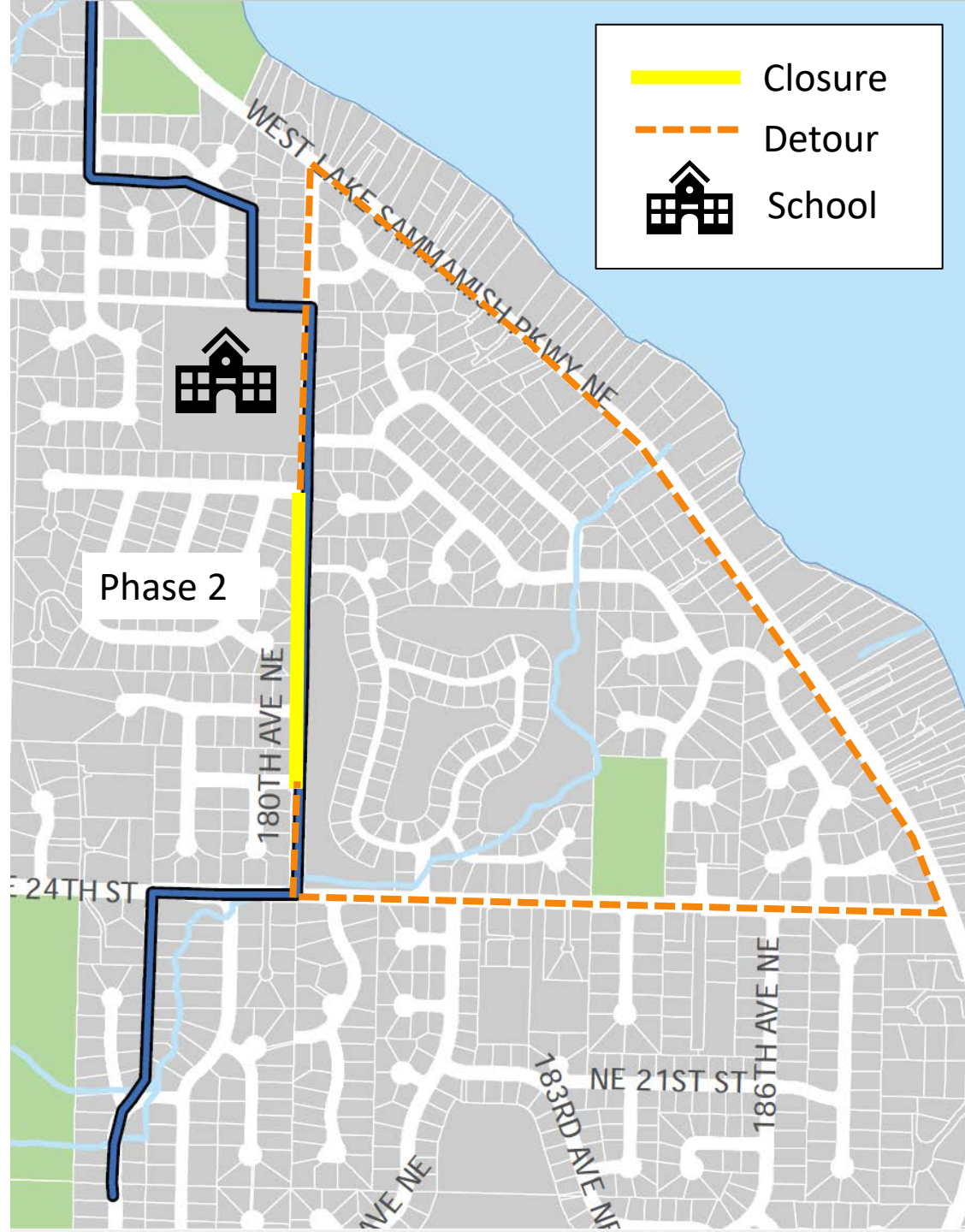
Audubon Elementary School

- 180th Ave NE
 - 3-phased rolling full road closure
 - Local and emergency access always maintained
 - No work in front of entrance to Audubon Elementary when school is in session



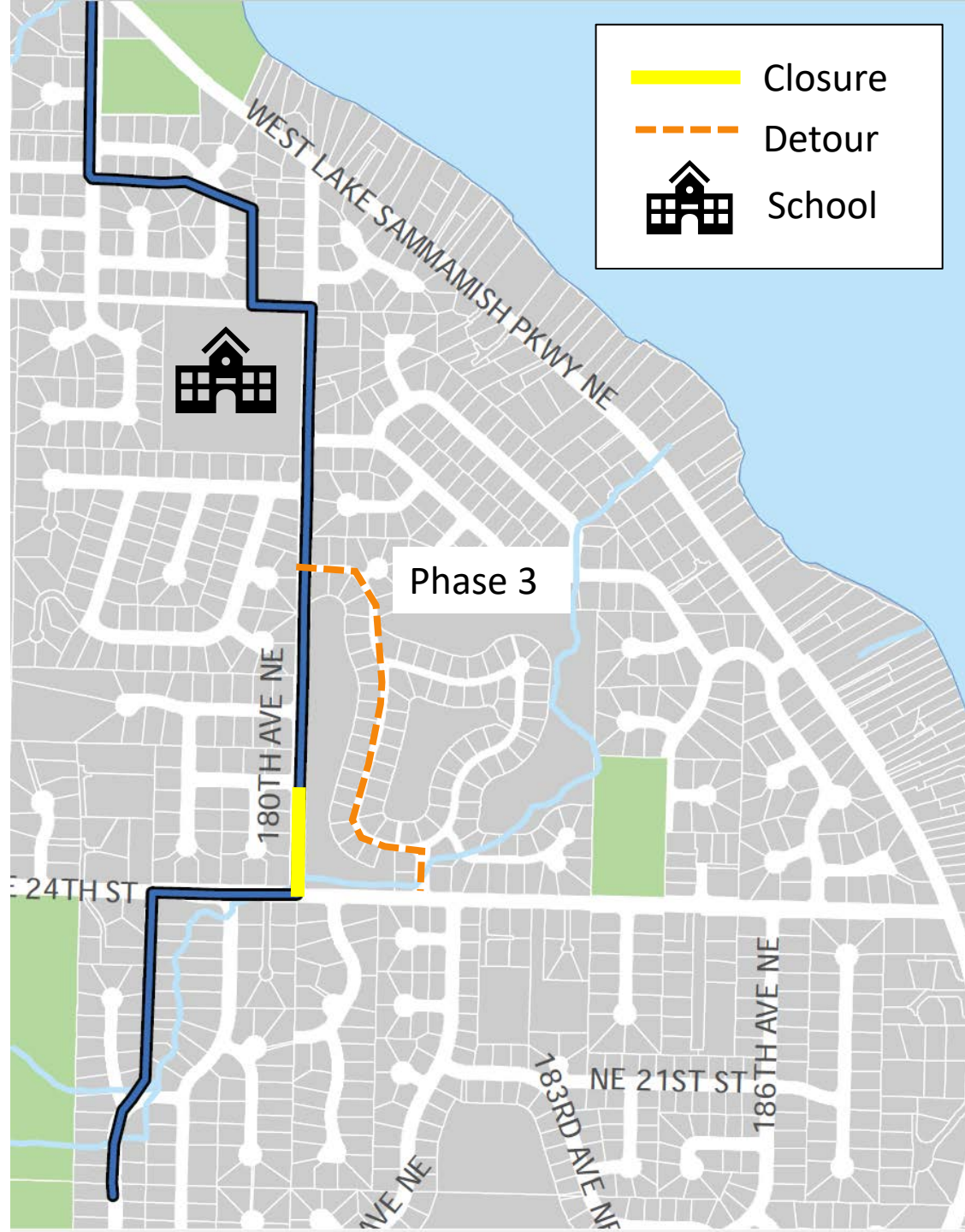
Audubon Elementary School

- 180th Ave NE
 - 3-phased rolling full road closure
 - Local and emergency access always maintained
 - No work in front of entrance to Audubon Elementary when school is in session



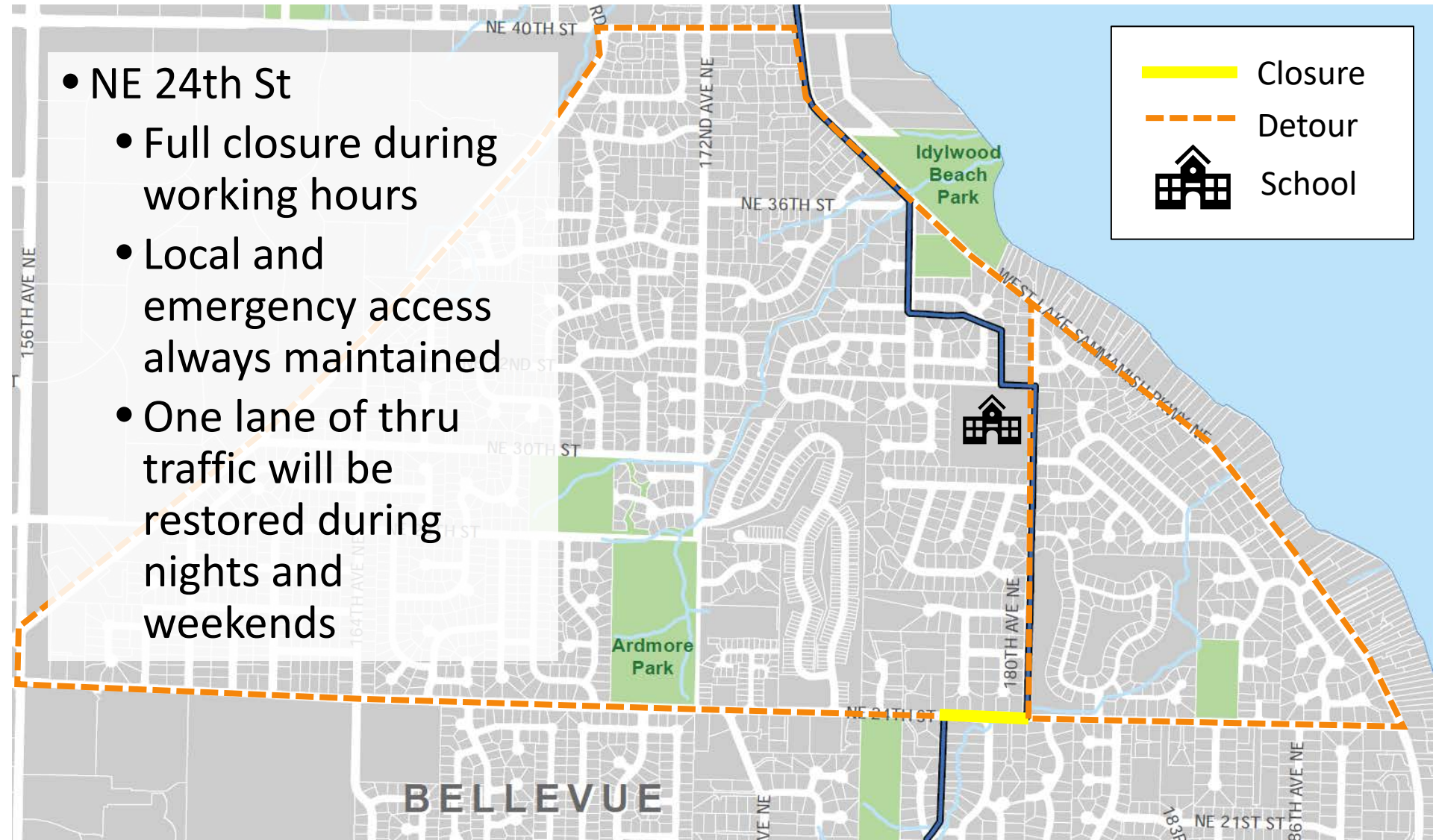
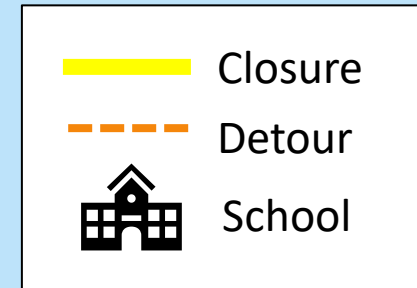
Audubon Elementary School

- 180th Ave NE
 - 3-phased rolling full road closure
 - Local and emergency access always maintained
 - No work in front of entrance to Audubon Elementary when school is in session



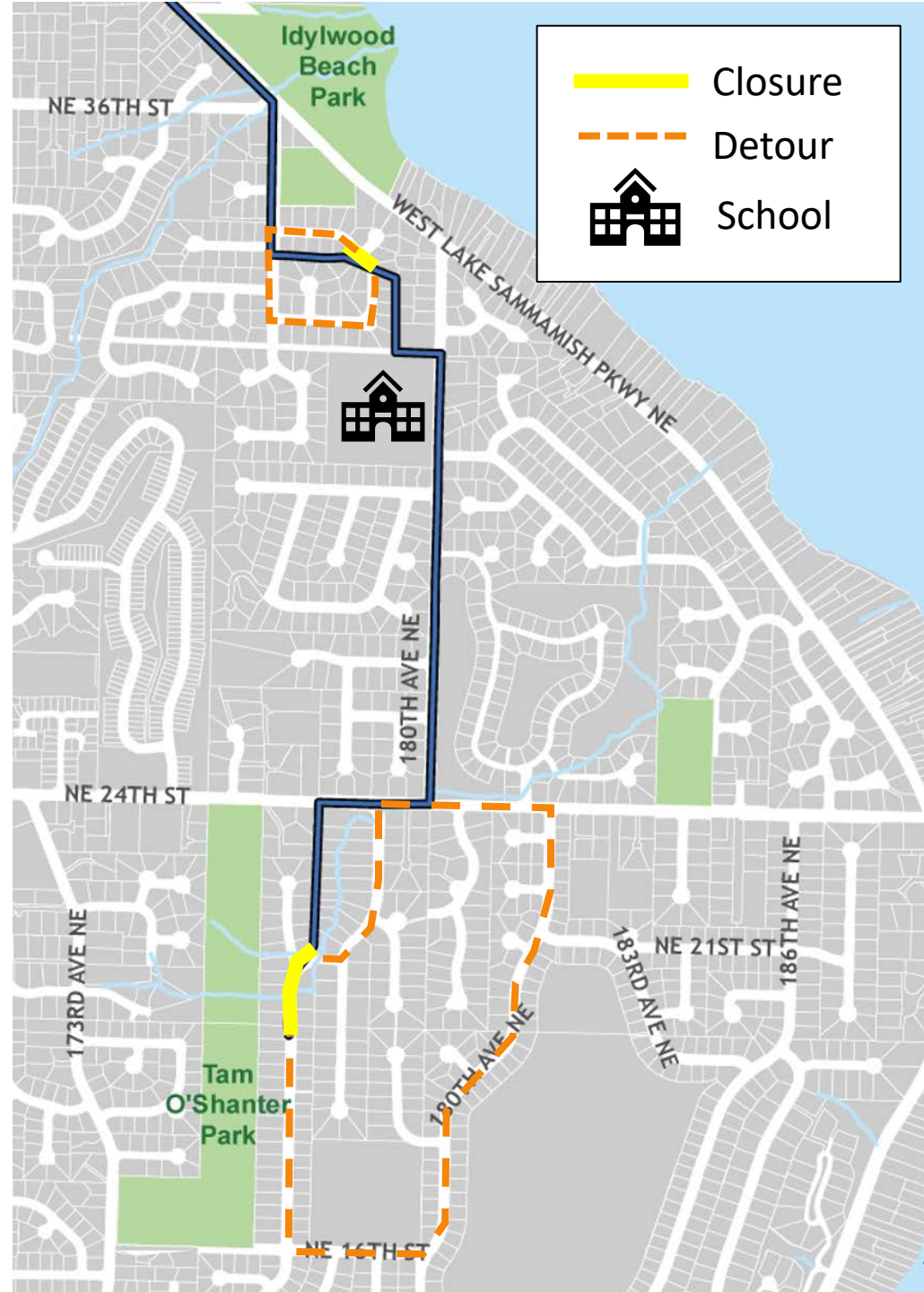
NE 24th Street

- NE 24th St
 - Full closure during working hours
 - Local and emergency access always maintained
 - One lane of thru traffic will be restored during nights and weekends



Vuelake neighborhood

- 179th Ave NE & 177th Ave NE
 - Rolling full road closures
 - Roads reopened nights and weekends
 - Local and emergency access always maintained





Lake Hills and NW Lake Sammamish Sewer Upgrade Project

Road restoration

- Crews will repair impacted areas of pavement, sidewalks, curbs and planter strips
- King County will install 24 new curb ramps at 11 locations
- May be delays between construction and restoration





Lake Hills and NW Lake Sammamish Sewer Upgrade Project

Next steps



Acquire necessary permits



Hire contractor in 2023



Begin construction in 2024



Lake Hills and NW Lake Sammamish Sewer Upgrade Project

Stay informed

- **Contact** Kelly Foley Kruse, community relations at 206-477-8621 or kelly.foleykruse@kingcounty.gov
- **Visit** the project website at:
www.kingcounty.gov/KCRedmondSewer
- **Sign up** for email updates on our website
- **Enroll** in text alerts: text **KING REDMONDSEWER** to **486-311**



Lake Hills and NW Lake Sammamish Sewer Upgrade Project

Stay informed

- **Contact** Scott Reynolds, City of Redmond Planner, at 425-556-2409 or sreynolds@redmond.gov
- **Contact** Cathy Beam, City of Redmond Planner, at 425-556-2429 or cbeam@redmond.gov



King County

Lake Hills and NW Lake Sammamish Sewer Upgrade Project

5-minute break



Lake Hills and NW Lake Sammamish Sewer Upgrade Project

King County

- Andrea Clinkscales
- Cindy Clark
- Danny Applegate
- Erik Williams
- Hayley Nolan
- John Abdalkhani
- Kelly Foley Kruse
- Lauren Wheeler
- Lisa Danielski
- Matoya Scott
- Steve Botts

City of Redmond

- Bruce Newman
- Cathy Beam
- Cindy Wellborn
- Emily Flanagan
- Peter Dane
- Scott Reynolds
- Steve Hitch



Lake Hills and NW Lake Sammamish Sewer Upgrade Project

Question and answer session

Ask your question by:

- Typing into the Q&A Tool
- Clicking on the Raise Hand feature to share a question or comment
- Dialing *3 if calling from your phone





King County

Lake Hills and NW Lake Sammamish Sewer Upgrade Project

Thank you for joining us!