



King County

Lake Hills and NW Lake Sammamish Sewer Upgrade Project

Redmond Pedestrian and Bicycle Advisory Committee Briefing



October 11, 2021

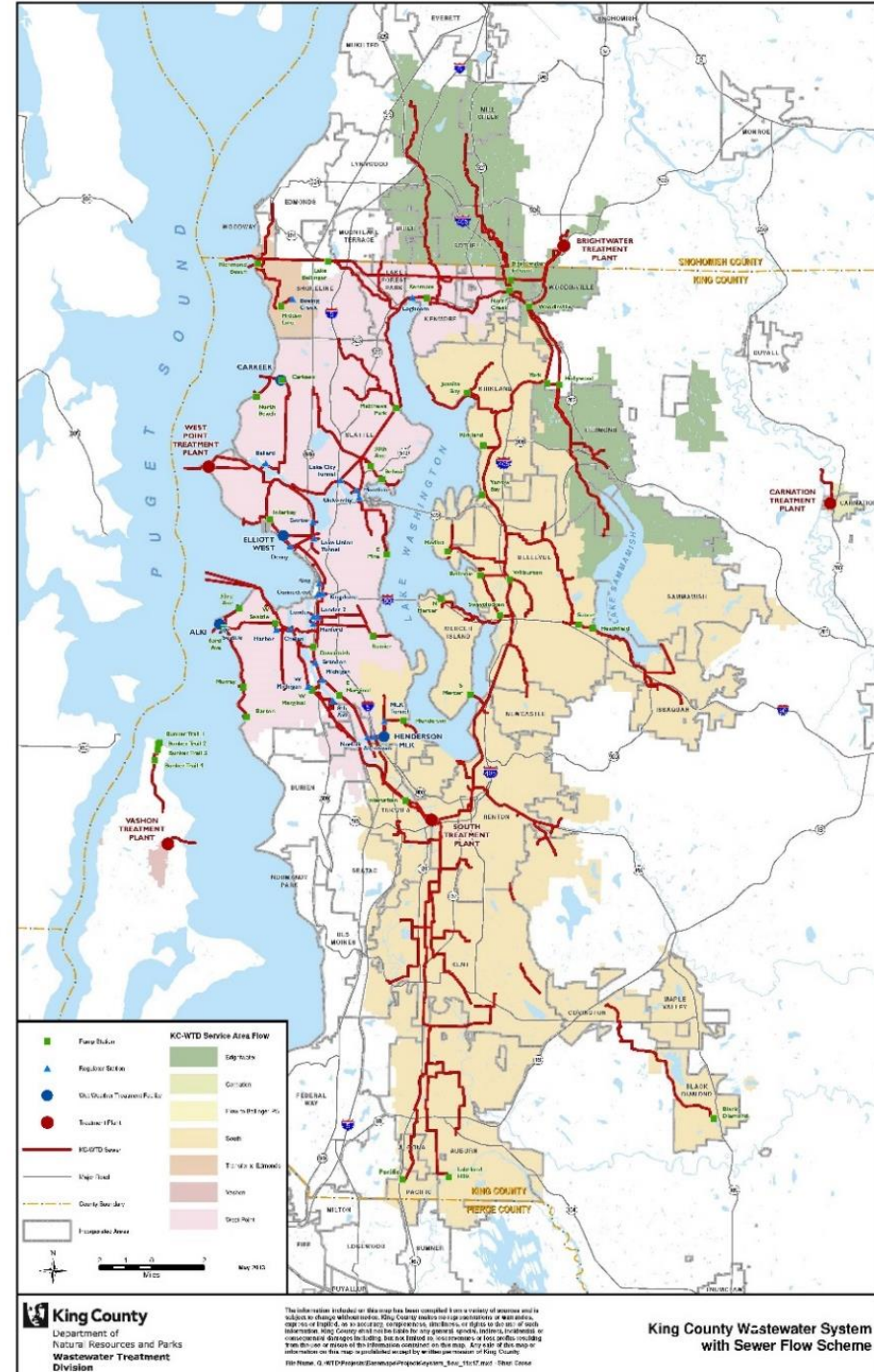
Agenda

- Project overview
- Sammamish River Trail
- Street work
- Next steps
- Our commitment to you



King County WTD

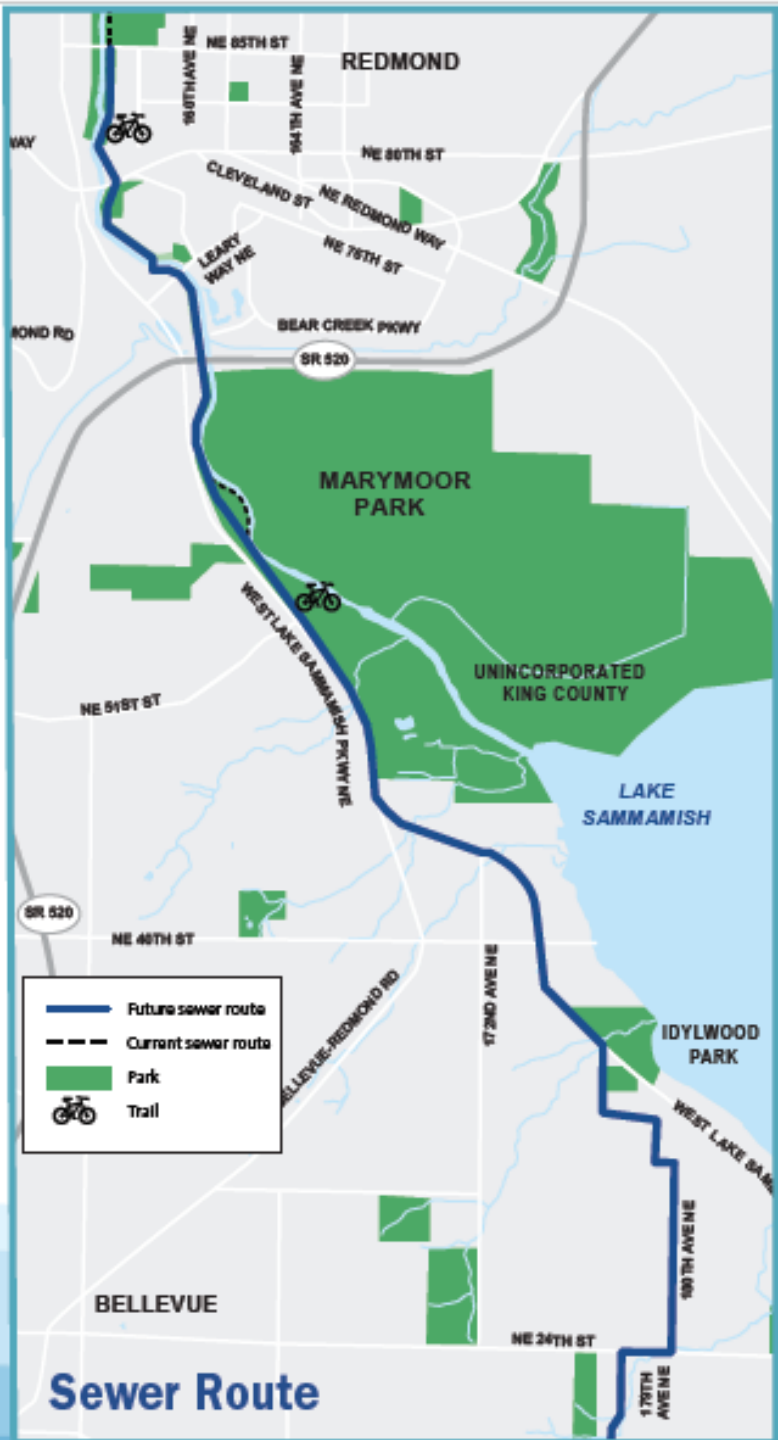
- 1.9 million people served
- 34 local sewer agencies
- 424 square mile area served
- 5 treatment plants
- 391 miles of pipe
- 185 million gallons sewage treated/day





Project objective

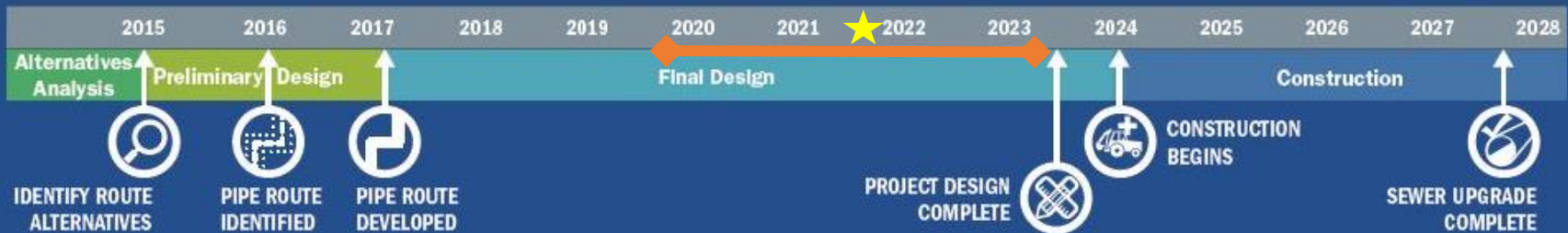
- Upgrade 4.5 miles of sewer pipes in Redmond to provide service for another 50+ years



Sewer route

- Upgrade 4.5 miles of sewer pipes in Redmond to provide service for another 50+ years

Project timeline



City of Redmond permit process
We are here

*This is an estimated project timeline and is likely to shift over the course of the project.

What to expect in construction

- Typical work hours
 - 7 a.m. to 7 p.m. weekdays
 - 9 a.m. to 6 p.m. Saturday
- Large equipment, truck traffic
- Noise, vibration, and dust
- Road closures and detours
- Trail closures and detours
- Vegetation removal and replacement



Sammamish River Trail closures & detours

- Intermittent closures over 3-year construction window
- Work will be completed in sections and may not be consecutive
- Closures will be between access points, requiring off-site detour routes



**Section of
Sammamish
River Trail
impacted by
sewer project**

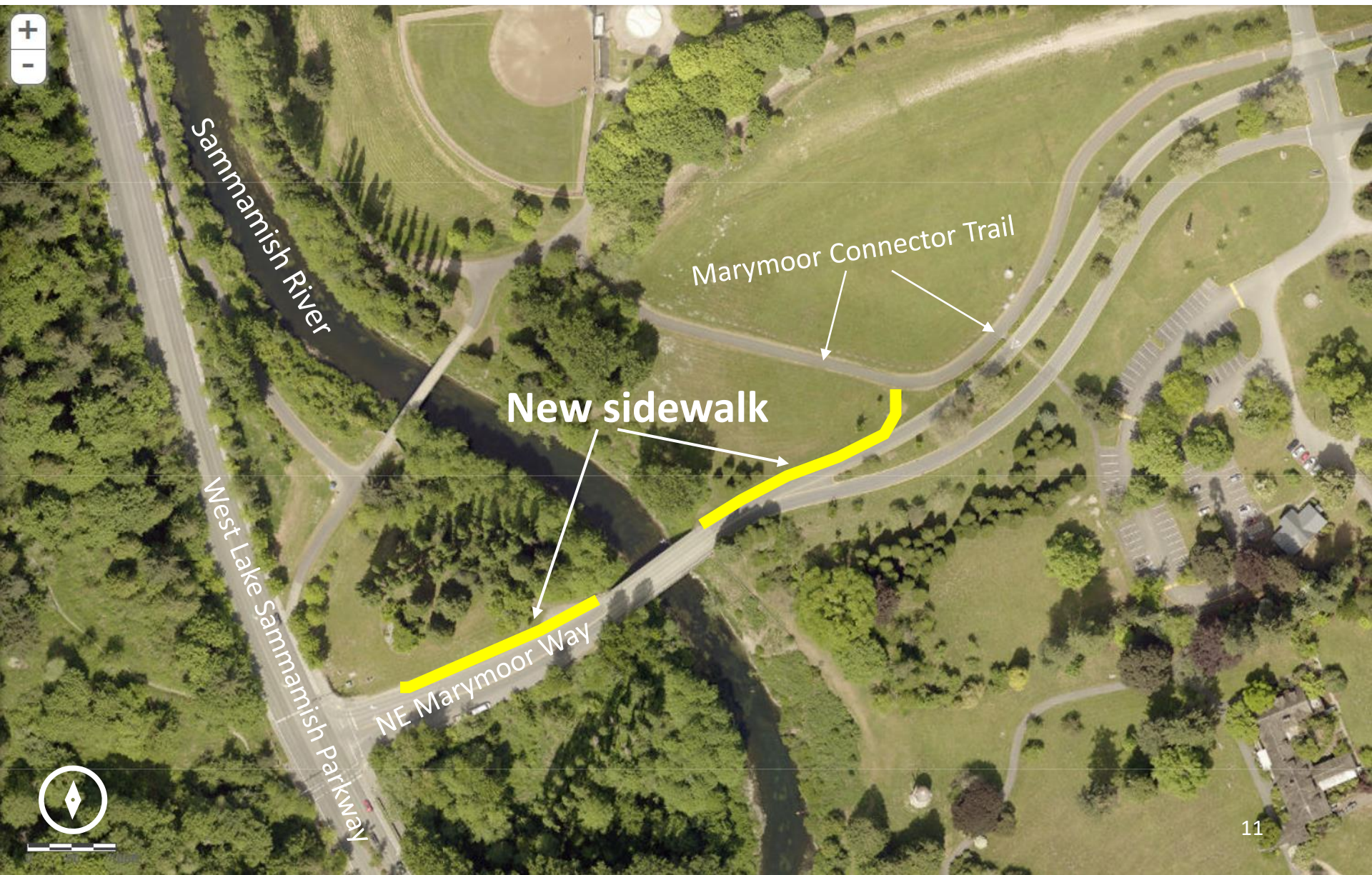
- Sammamish River Trail will be impacted between NE 85th Street and NE 51st Street
- Trail on east and west side of the river will not be closed at the same time, except for when sewer is being built under Sammamish River

Marymoor Park

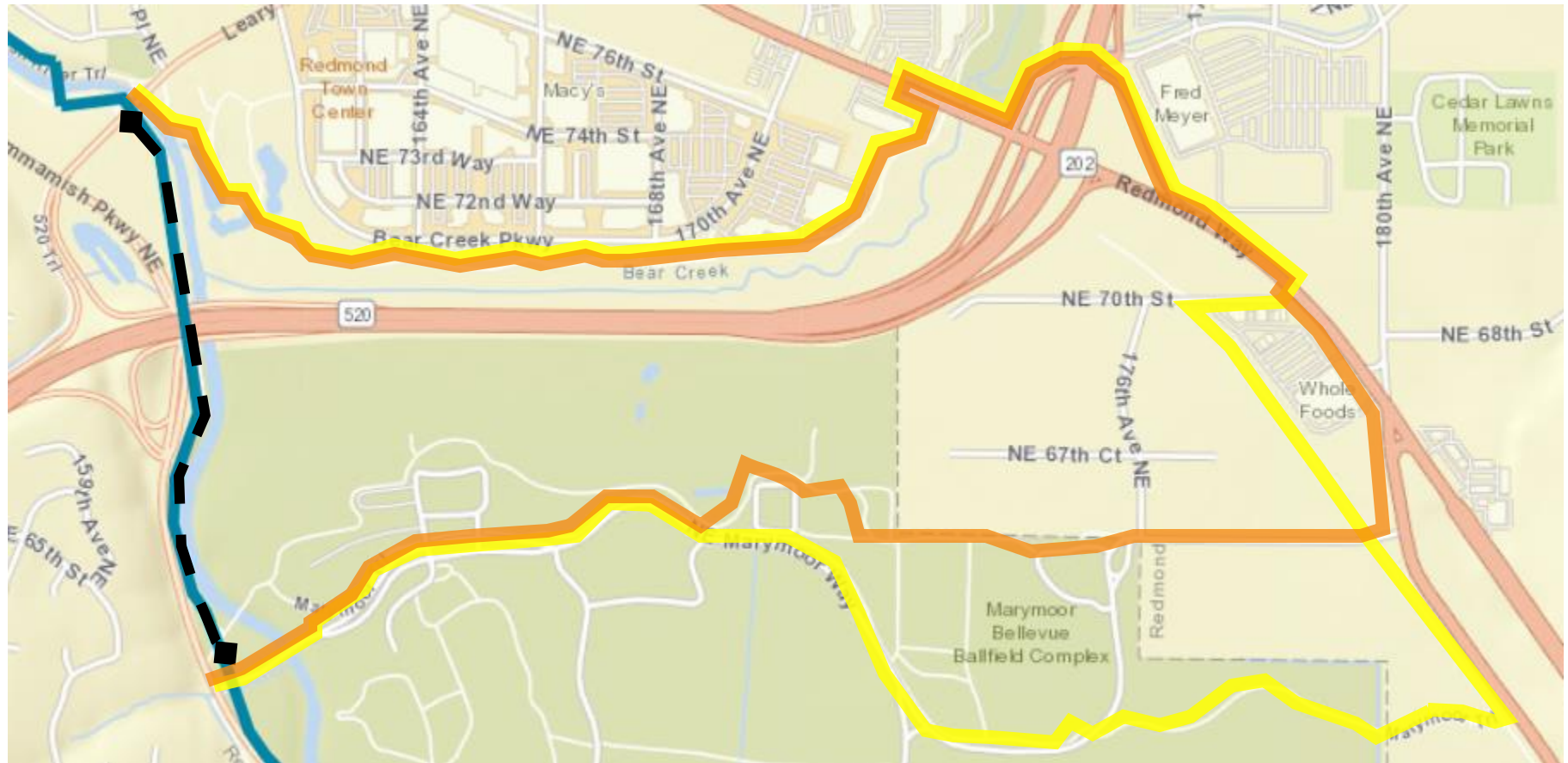
- Sammamish River Trail closures on west side of park
- Will drill under the Marymoor Park entrance
- Will install a new sidewalk for ADA access during trail closure



Approximate location of new sidewalk

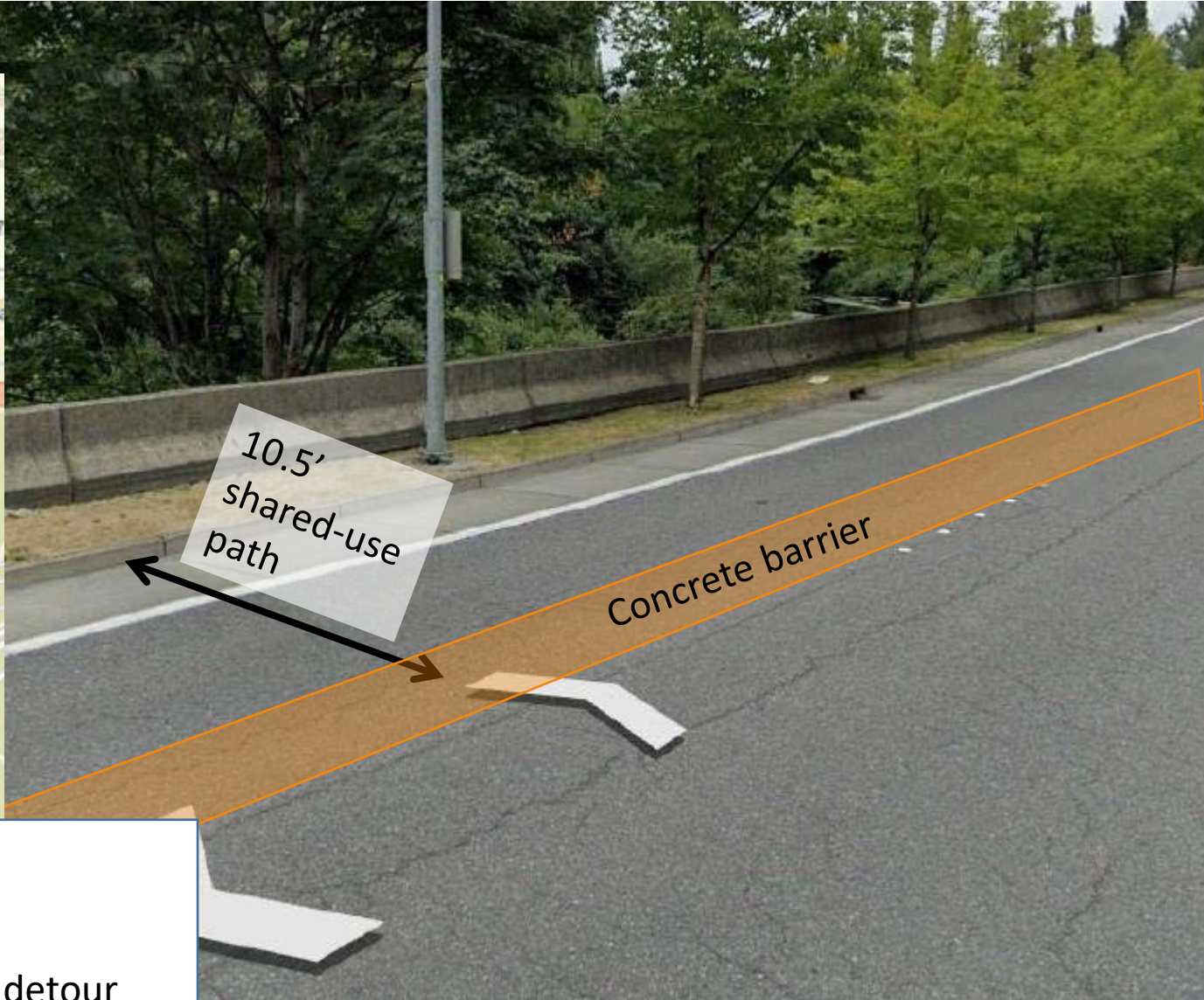
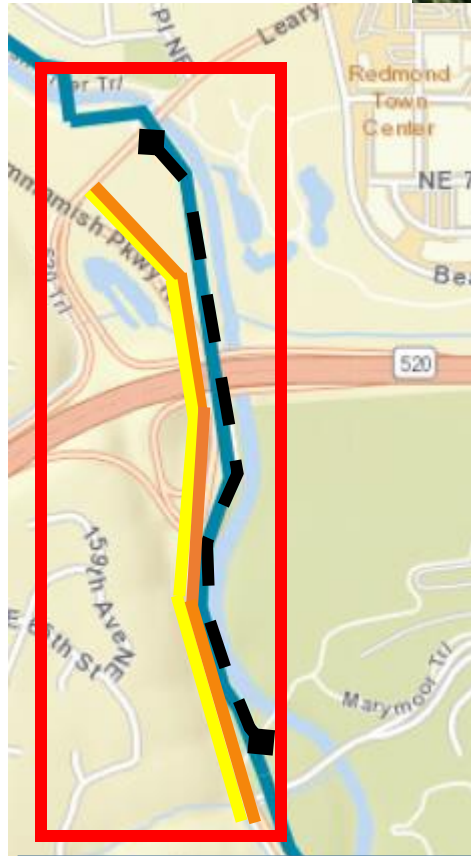


Old detour route: Leary to Marymoor Way



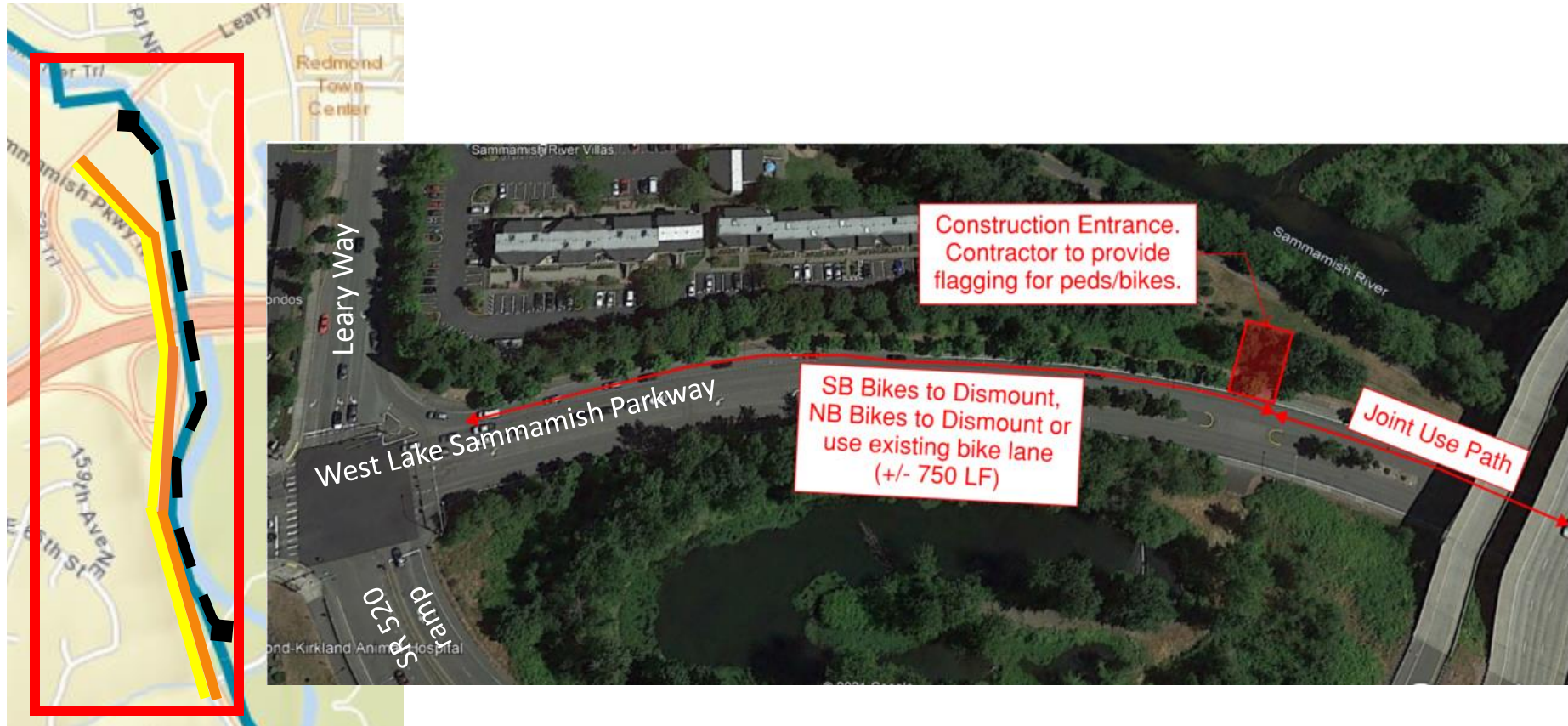
- | | |
|---|--|
|  Pipe route |  Closure |
|  Pedestrian detour |  Bicycle detour |

New detour route: Leary to Marymoor Way



- Closure
- Pipe route
- Pedestrian detour
- Bicycle detour

New detour route: Leary to Marymoor Way



- Closure
- Pipe route
- Pedestrian detour
- Bicycle detour

Trail restoration

- Relocate maintenance holes
- Plant new trees and shrubs
- Repave affected areas of trail
- Partner with King County Parks to widen trail between NE 85th Street and Leary Way



Rendering of trail widening looking North from Leary Way

Street work

- Sewer runs under:
 - West Lake Sammamish Parkway
 - 177th Ave NE
 - 179th Ave NE
 - NE 24th St
 - 180th Ave NE
- Expect intermittent bike lane & sidewalk closures



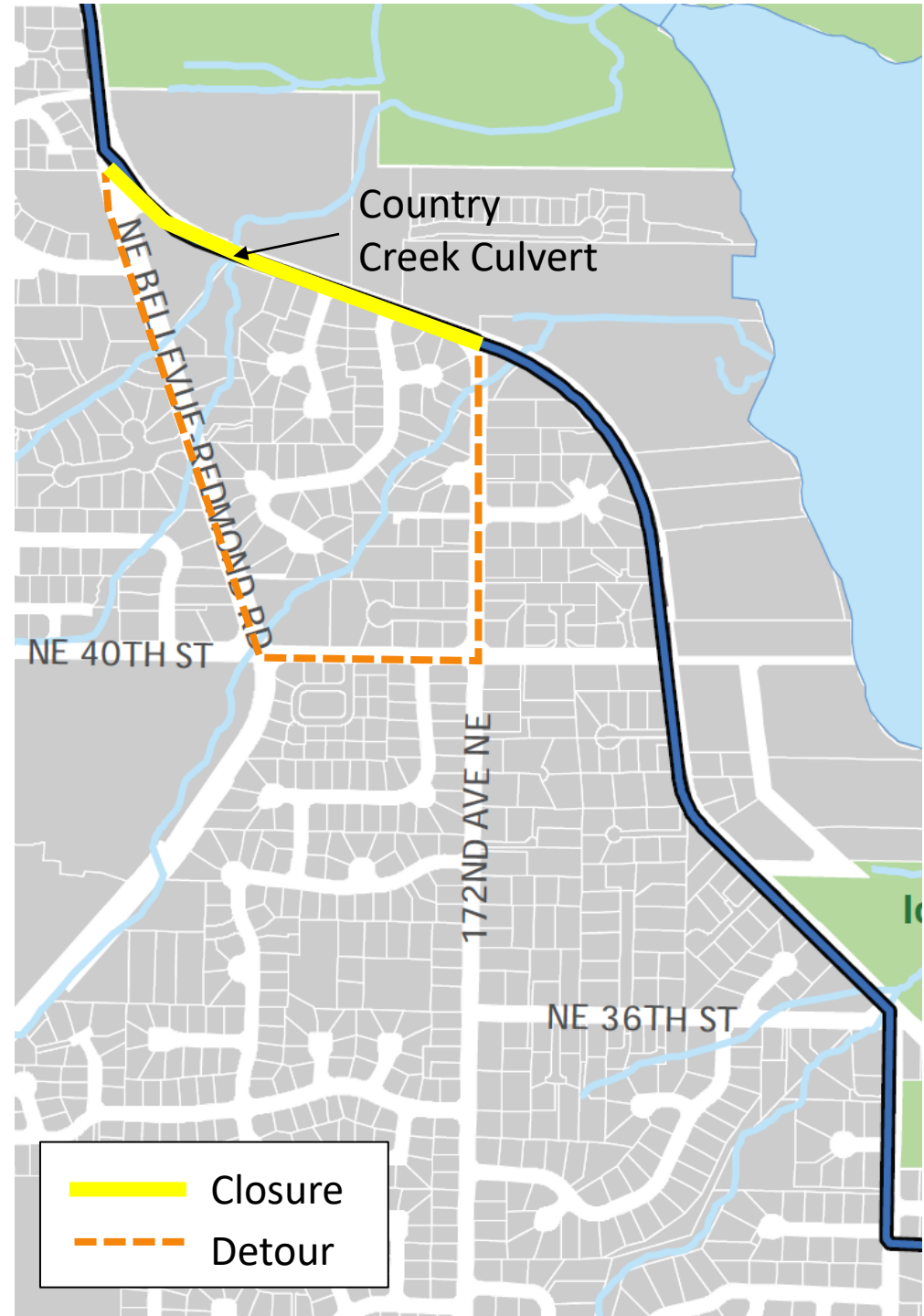
West Lake Sammamish Parkway (WLSP)

- NE 51st Street to Bel-Red Rd
 - Bike lanes closed
 - Bikes merge with traffic
 - One lane of traffic maintained in each direction



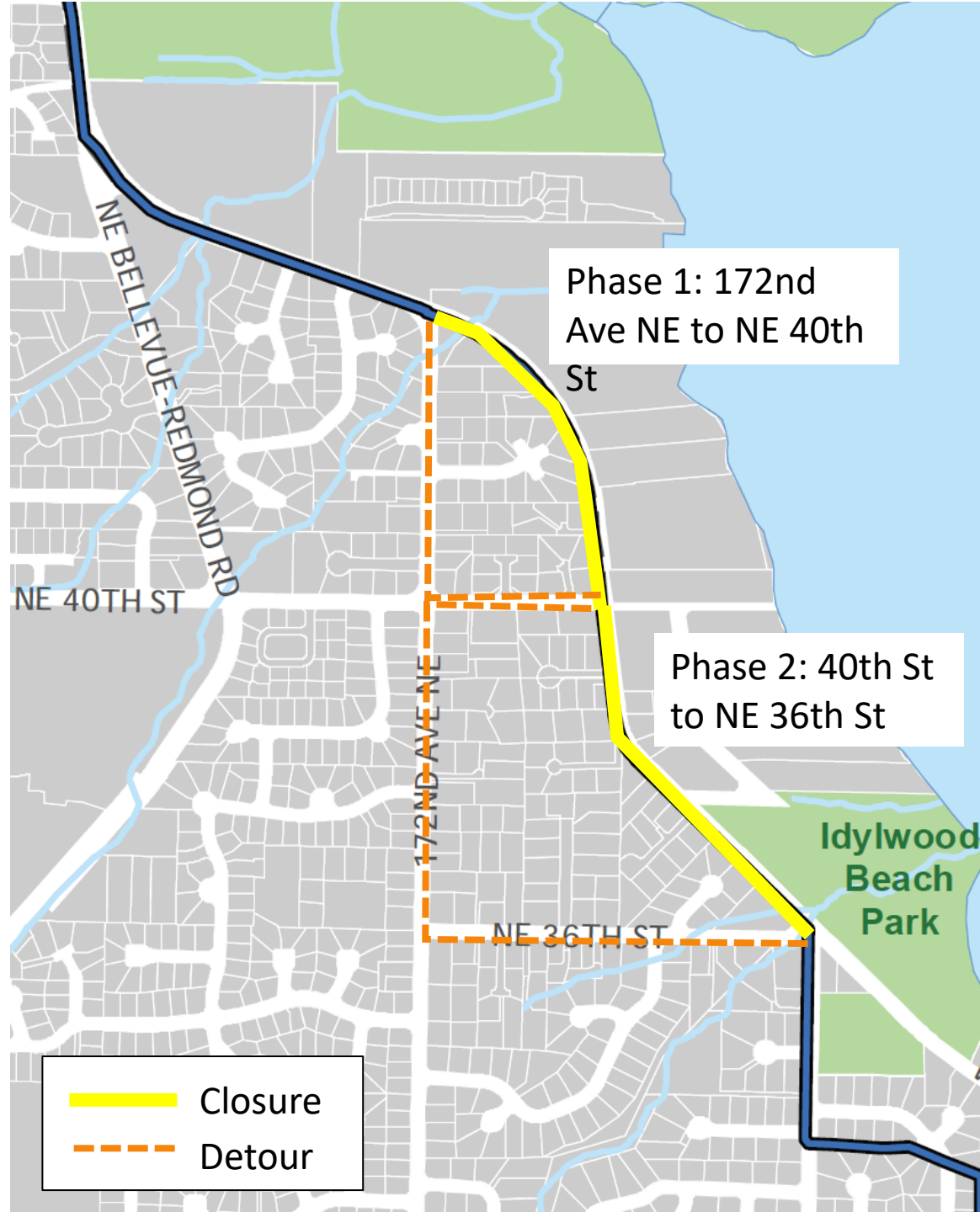
West Lake Sammamish Parkway (WLSP)

- Bel-Red Rd to 172nd Ave NE during sewer construction
 - Will maintain northbound only traffic. Bikes merge with traffic
 - Southbound vehicles and bikes detoured
- Bel-Red Rd to 172nd Ave NE during culvert construction
 - Full road closure
 - Local and emergency access always maintained



West Lake Sammamish Parkway (WLSP)

- 172nd Ave NE to NE 36th St
 - 2-phased, full closure during working hours
 - Local and emergency access always maintained
 - One lane in both directions of traffic will be restored outside of working hours (nights and weekends)





Lake Hills and NW Lake Sammamish Sewer Upgrade Project

Road restoration

- Crews will repair impacted areas of pavement, sidewalks, curbs and planter strips
- King County will install 24 new curb ramps at 11 locations
- May be delays between construction and restoration





Lake Hills and NW Lake Sammamish Sewer Upgrade Project

Country Creek culvert

- Improved design to include:
 - Two-lane roadway
 - Bike lanes and curbs on both sides
 - Planter strip and 12-ft-wide shared use path on north side of road

New 12-ft-wide path and planter strip

Next steps



Acquire necessary permits



Hire contractor in 2023



Begin construction in 2024



Our commitment to you



Lake Hills and NW Lake Sammamish Sewer Upgrade Project

Questions and comments

- **Contact** Kelly Foley Kruse, community relations at 206-477-8621 or kelly.foleykruse@kingcounty.gov
- **Visit** the project website at:
www.kingcounty.gov/KCRedmondSewer
- **Sign up** for email updates on our website
- **Enroll** in text alerts: text **KING REDMONDSEWER** to **486-311**