



King County

# Lake Hills and NW Lake Sammamish Sewer Upgrade Project

## Friends of Marymoor Park Briefing



October 27, 2021

# Agenda

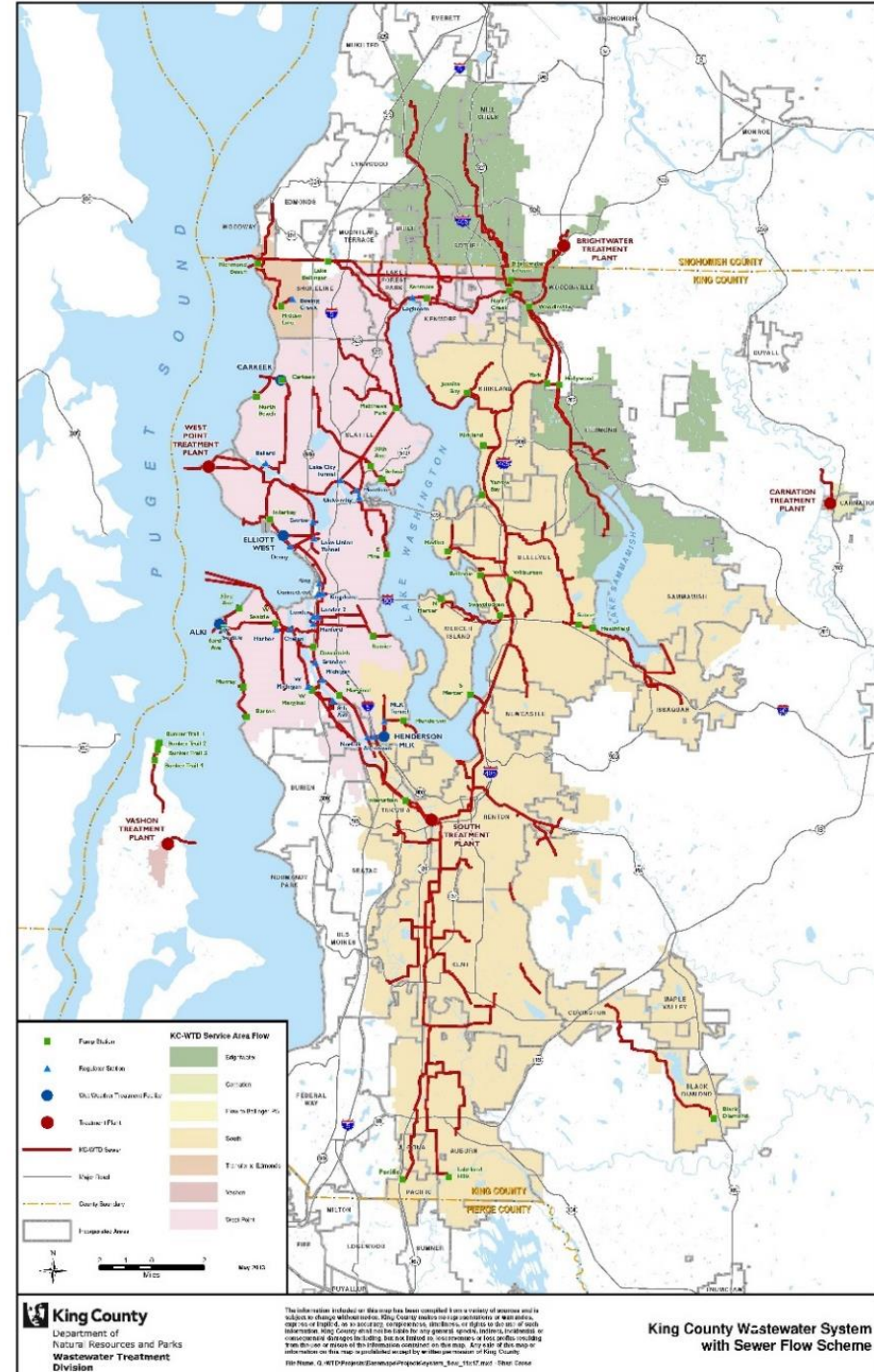
- Project overview
- Tree removal and replacement
- Sammamish River Trail
- Street work
- Next steps
- Our commitment to you





# King County WTD

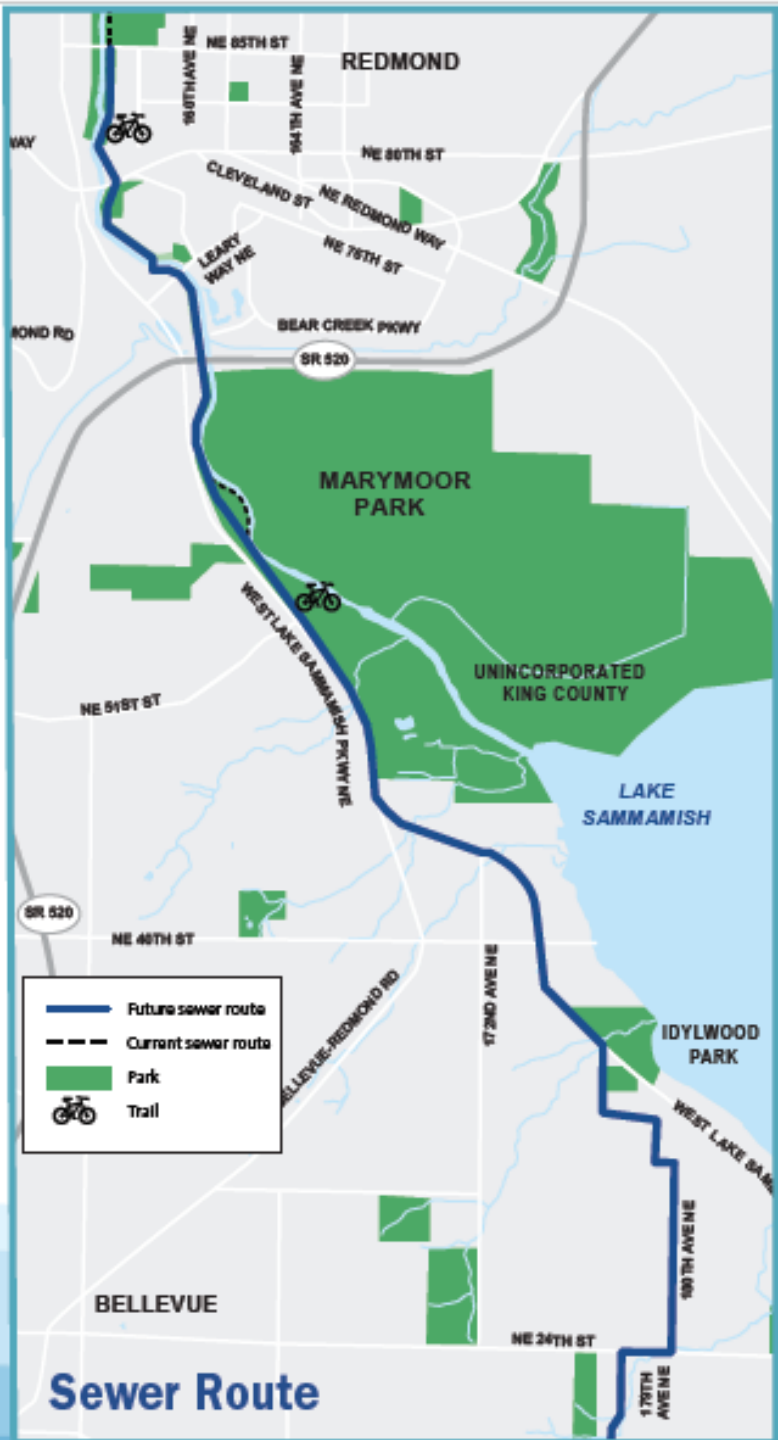
- 1.9 million people served
- 34 local sewer agencies
- 424 square mile area served
- 5 treatment plants
- 391 miles of pipe
- 185 million gallons sewage treated/day





# Project objective

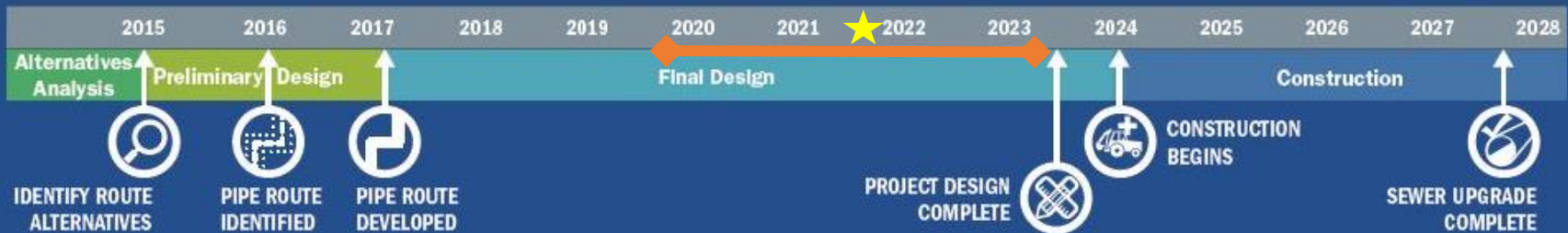
- Upgrade 4.5 miles of sewer pipes in Redmond to provide service for another 50+ years



# Sewer route

- Upgrade 4.5 miles of sewer pipes in Redmond to provide service for another 50+ years

# Project timeline



City of Redmond permit process

We are here

\*This is an estimated project timeline and is likely to shift over the course of the project.

# What to expect in construction

- Typical work hours
  - 7 a.m. to 7 p.m. weekdays
  - 9 a.m. to 6 p.m. Saturday
- Large equipment, truck traffic
- Noise, vibration, and dust
- Road closures and detours
- Trail closures and detours
- Vegetation removal and replacement







# Marymoor Park

- Sammamish River Trail closures on west side of park
- Will drill under the Marymoor Park entrance
- Traffic congestion, delays, lane closures on West Lake Sammamish Parkway
- Will install a new sidewalk for ADA access



# Tree removal and replacement

- Removing ~680 trees (includes 548 in the City of Redmond)
- Replanting ~1,367 trees
  - 338 trees on-site
  - 1,251 trees off-site
- Replanting plans in the City of Redmond still under discussion



**Section of  
Sammamish  
River Trail  
impacted by  
sewer project**

- Sammamish River Trail will be impacted between NE 85th Street and NE 51st Street
- Trail on east and west side of the river will not be closed at the same time, except for when sewer is being built under Sammamish River

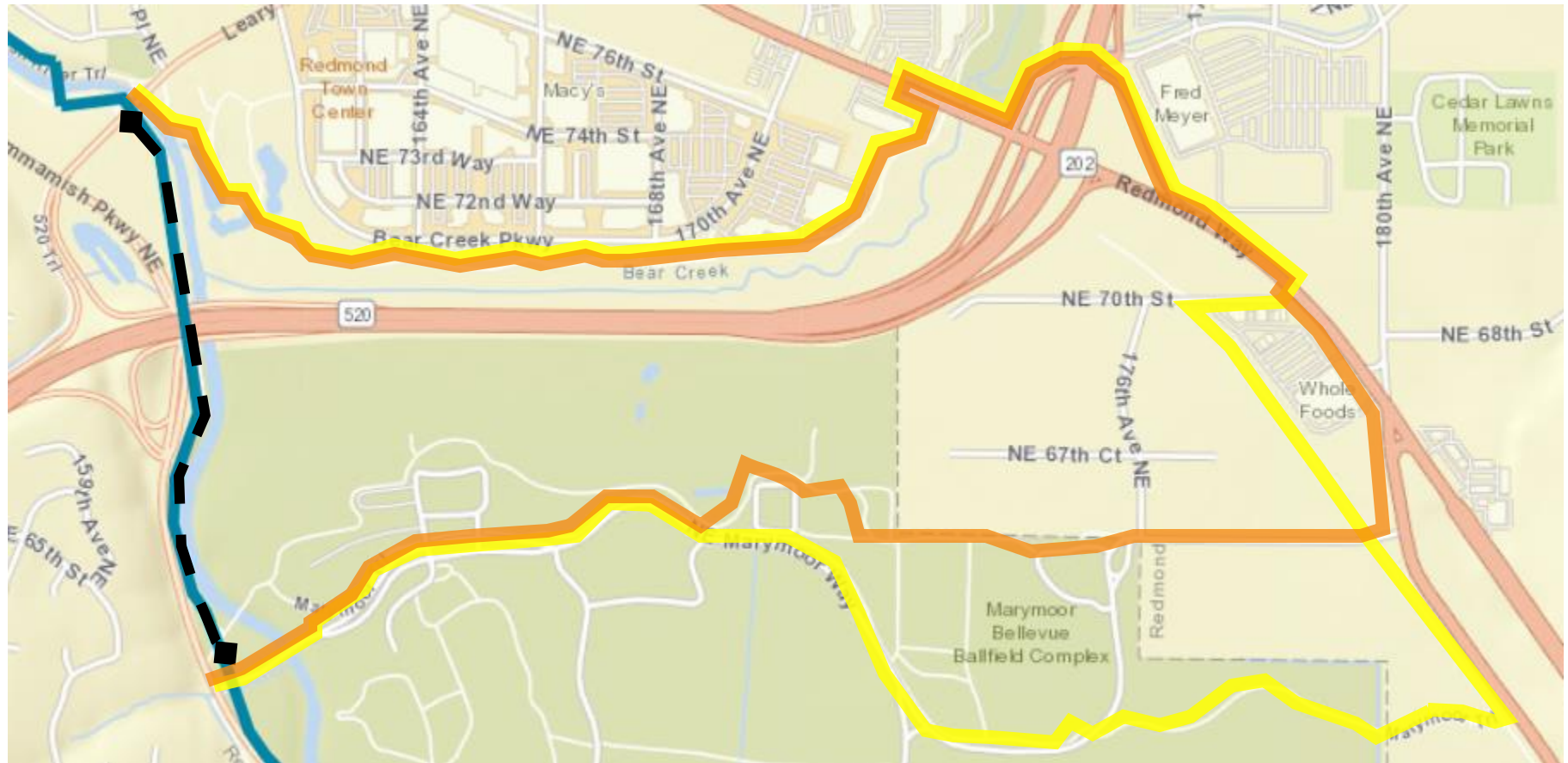
# Sammamish River Trail closures & detours

- Intermittent closures over 3-year construction window
- Work will be completed in sections and may not be consecutive
- Closures will be between access points, requiring off-site detour routes



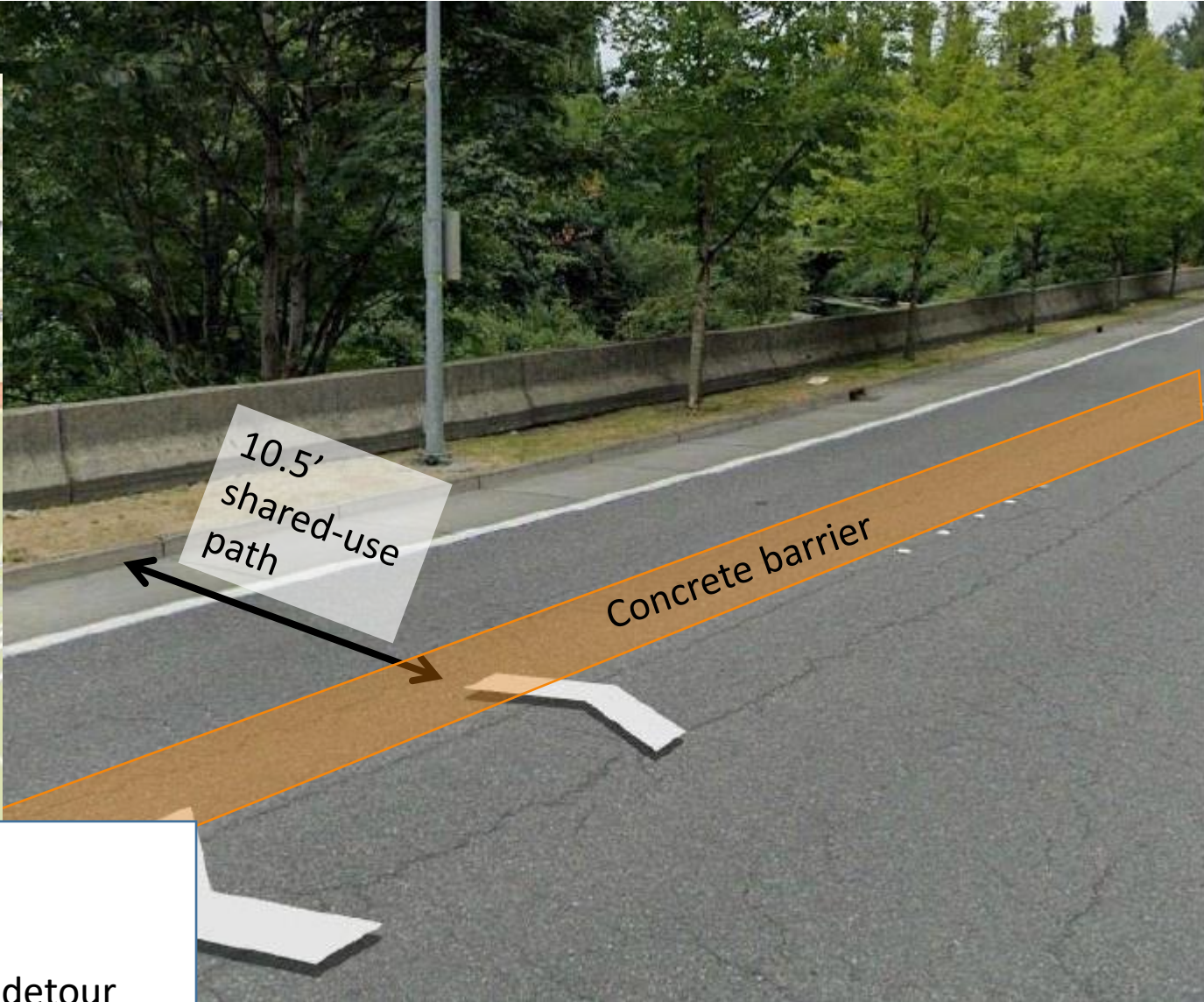
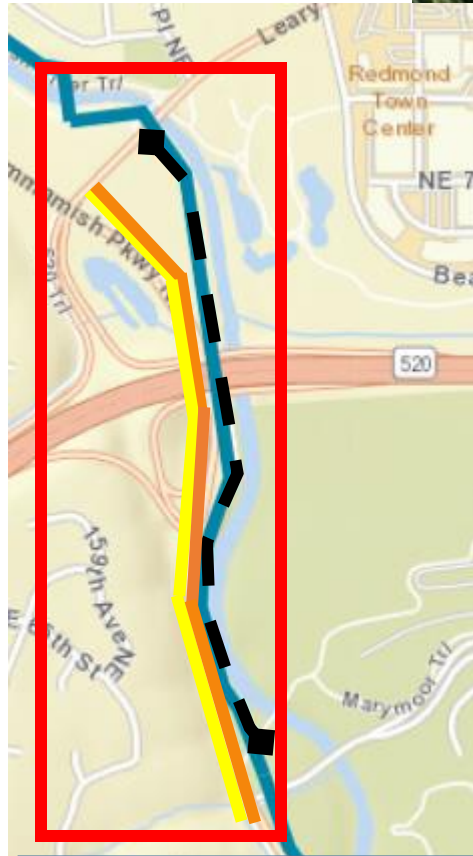


# Old detour route: Leary to Marymoor Way



- |   |  |
|---|--|
|  Pipe route        |  Closure        |
|  Pedestrian detour |  Bicycle detour |

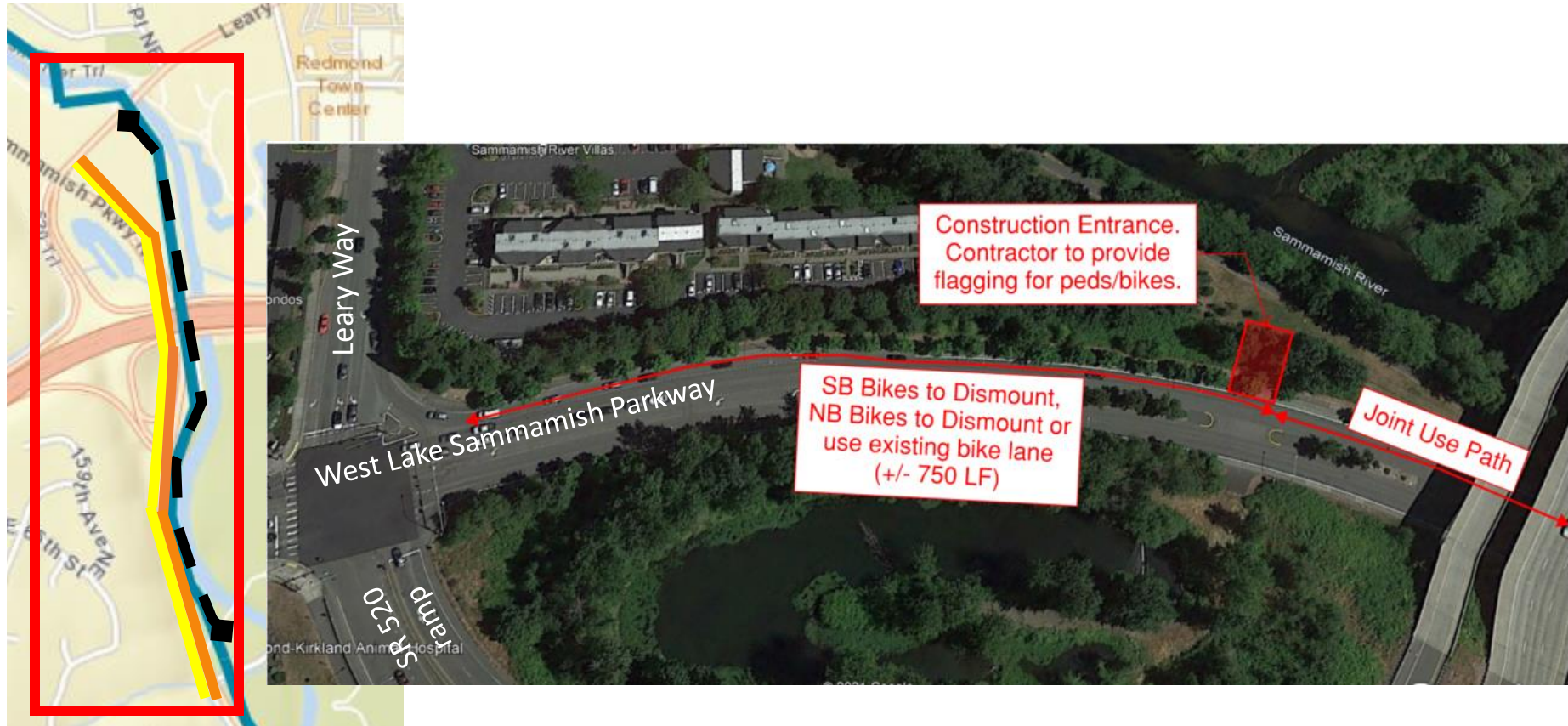
# New detour route: Leary to Marymoor Way



- Closure
- Pipe route
- Pedestrian detour
- Bicycle detour



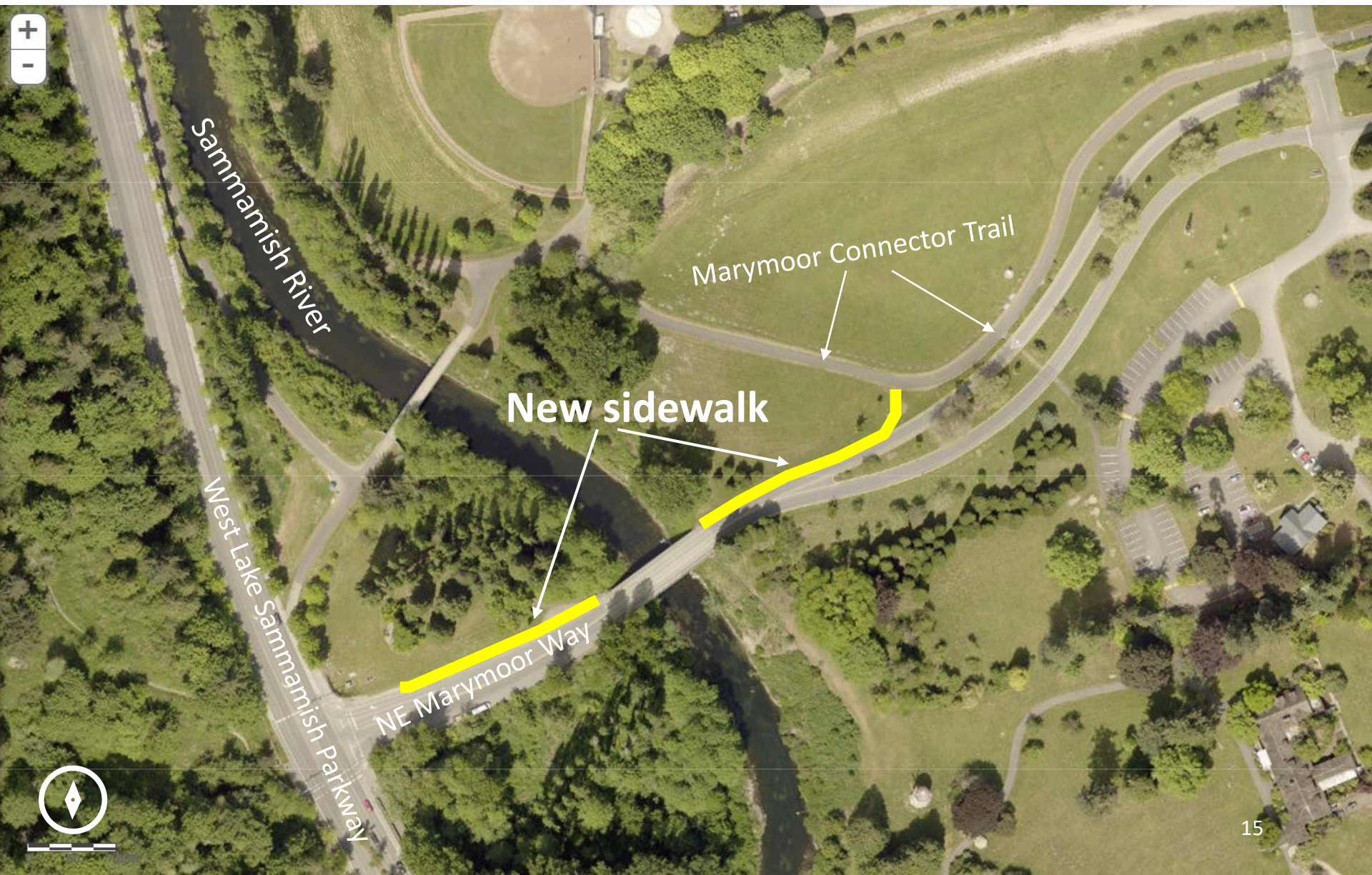
# New detour route: Leary to Marymoor Way



- Closure
- Pipe route
- Pedestrian detour
- Bicycle detour



# New sidewalk location at Marymoor





# Trail restoration

- Relocate maintenance holes
- Plant new trees and shrubs
- Repave affected areas of trail
- Partner with King County Parks to widen trail between NE 85th Street and Leary Way



*Rendering of trail widening looking North from Leary Way*

# Street work

- Sewer runs under:
  - West Lake Sammamish Parkway
  - 177th Ave NE
  - 179th Ave NE
  - NE 24th St
  - 180th Ave NE
- Expect intermittent bike lane & sidewalk closures





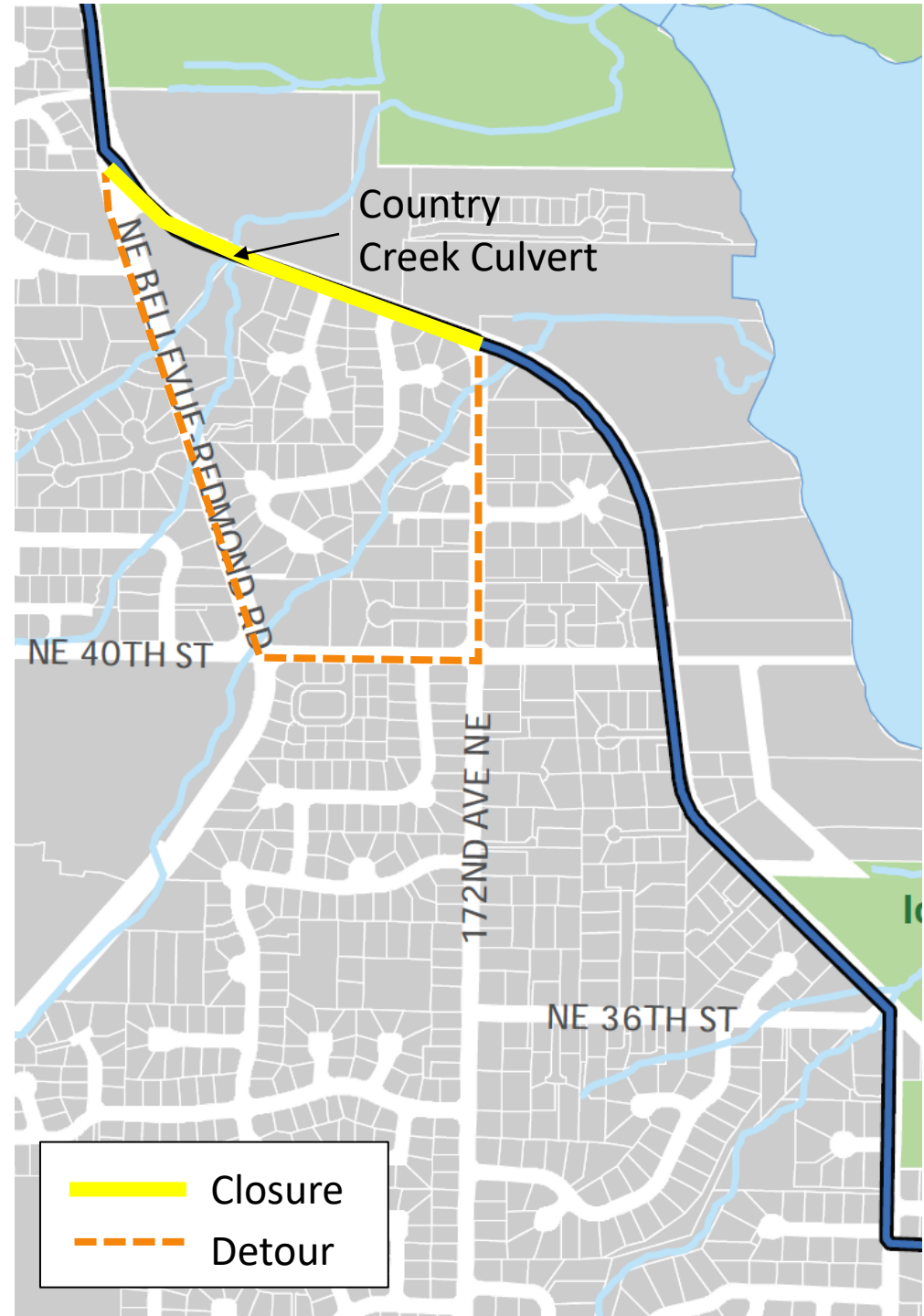
# West Lake Sammamish Parkway (WLSP)

- NE 51st Street to Bel-Red Rd
  - Bike lanes closed
  - Bikes merge with traffic
  - One lane of traffic maintained in each direction



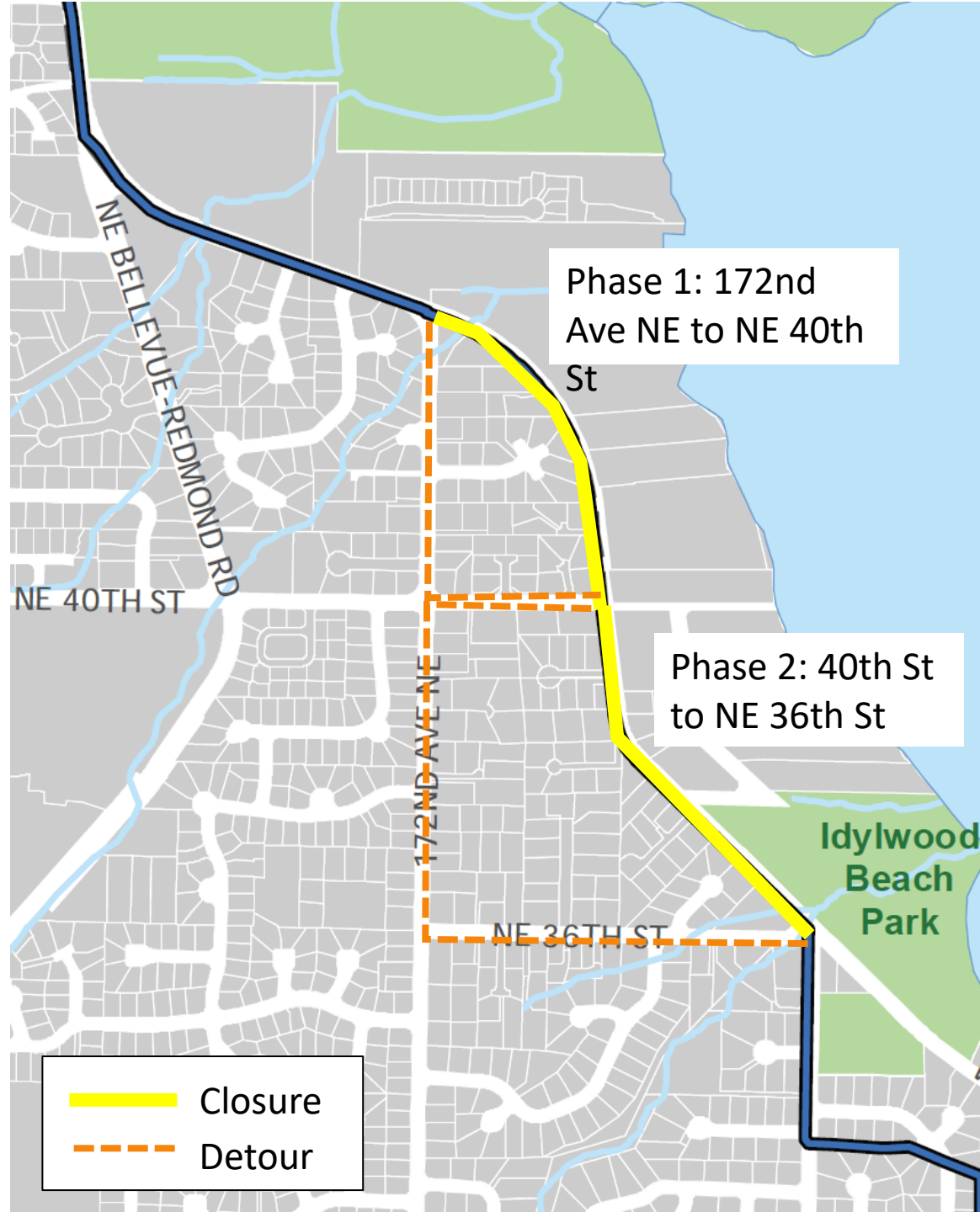
# West Lake Sammamish Parkway (WLSP)

- Bel-Red Rd to 172nd Ave NE during sewer construction
  - Will maintain northbound only traffic. Bikes merge with traffic
  - Southbound vehicles and bikes detoured
- Bel-Red Rd to 172nd Ave NE during culvert construction
  - Full road closure
  - Local and emergency access always maintained



# West Lake Sammamish Parkway (WLSP)

- 172nd Ave NE to NE 36th St
  - 2-phased, full closure during working hours
  - Local and emergency access always maintained
  - One lane in both directions of traffic will be restored outside of working hours (nights and weekends)







## Lake Hills and NW Lake Sammamish Sewer Upgrade Project

### Road restoration

- Crews will repair impacted areas of pavement, sidewalks, curbs and planter strips
- King County will install 24 new curb ramps at 11 locations
- May be delays between construction and restoration



# Next steps



Acquire necessary permits



Hire contractor in 2023



Begin construction in 2024





Our commitment to you



## Lake Hills and NW Lake Sammamish Sewer Upgrade Project

### Questions and comments

- **Contact** Kelly Foley Kruse, community relations at 206-477-8621 or [kelly.foleykruse@kingcounty.gov](mailto:kelly.foleykruse@kingcounty.gov)
- **Visit** the project website at:  
[www.kingcounty.gov/KCRedmondSewer](http://www.kingcounty.gov/KCRedmondSewer)
- **Sign up** for email updates on our website
- **Enroll** in text alerts: text **KING REDMONDSEWER** to **486-311**