



Lake Hills and NW Lake Sammamish Sewer Upgrade Project

August 23, 2023

Hello,

Thank you for following the [Lake Hills and NW Lake Sammamish Sewer Upgrade Project](#). The existing Lake Hills and NW Lake Sammamish sewer pipe is too small to meet the needs of the growing community and is reaching the end of its service life. King County is working to upgrade this 4.5-mile-long pipe to provide reliable sewer service for another 50 years or more. Read below to learn about what we're working on to complete final design and see new visuals for a pedestrian and cycling detour plan.

Come visit us at the Redmond Open Streets Festival!

Our project team will be hosting a booth this Saturday at the Redmond Open Streets Festival, 10 a.m. - 3 p.m. We hope to see you there!

Designing a safe project and reliable new pipe

King County continues to move forward the necessary planning and coordination required to complete final design. Completing the project design requires partner agencies to perform multiple rounds of fieldwork and plan reviews. This coordination ensures the project works to minimize impacts to those working and living near the project sites and that the pipe will be installed safely.

In 2023 and 2024, the project team will continue to:

- Conduct fieldwork
- Acquire permits to advance construction from the City of Redmond, the City of Bellevue, and several state and federal agencies
- Coordinate plans for other utility relocations to limit potential disruptions to services
- Update environmental and property restoration plans
- Keep community members informed of our progress through email updates, outreach events, and neighborhood briefings

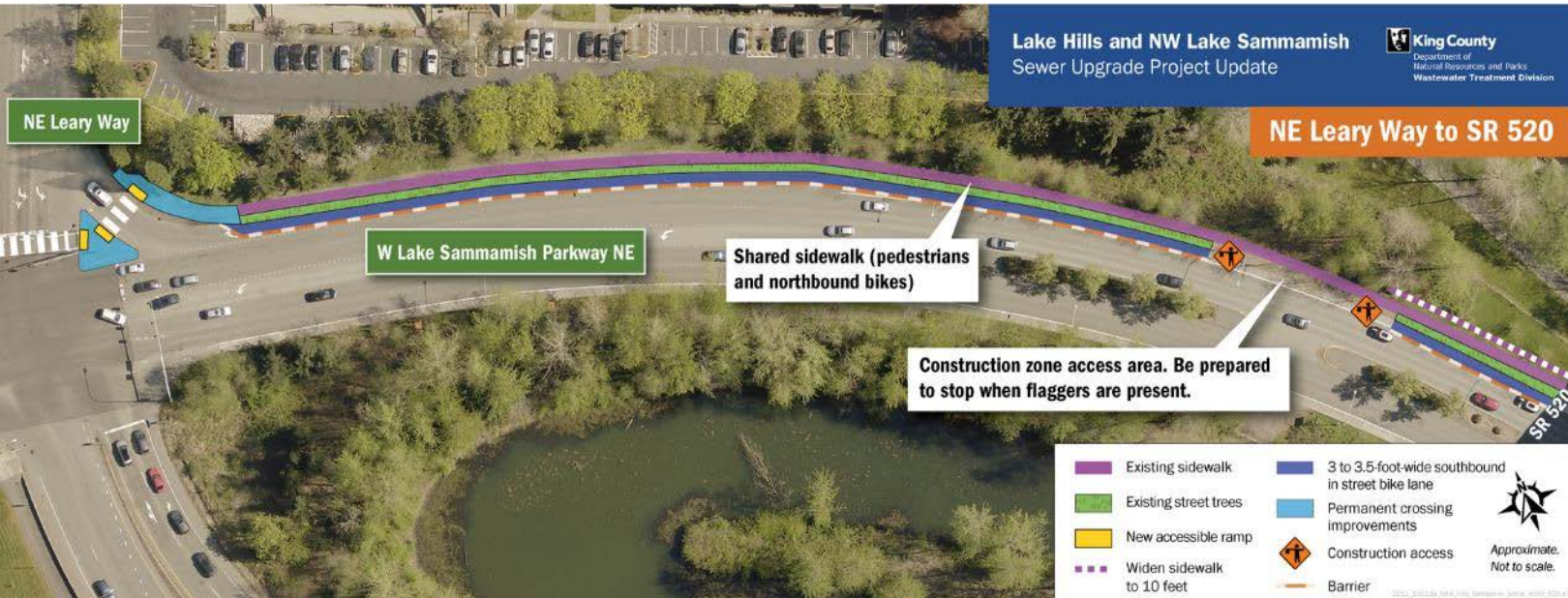
Improved West Lake Sammamish Parkway detour

When construction starts, King County's contractor will close sections of the Sammamish River Trail between NE 85 Street and NE 51 Street. King County, the City of Redmond, and WSDOT, collaborated on a revised detour route that does not require cyclists to dismount their bikes along the West Lake Sammamish Parkway sidewalk between SR 520 and Leary Way. Thank you for

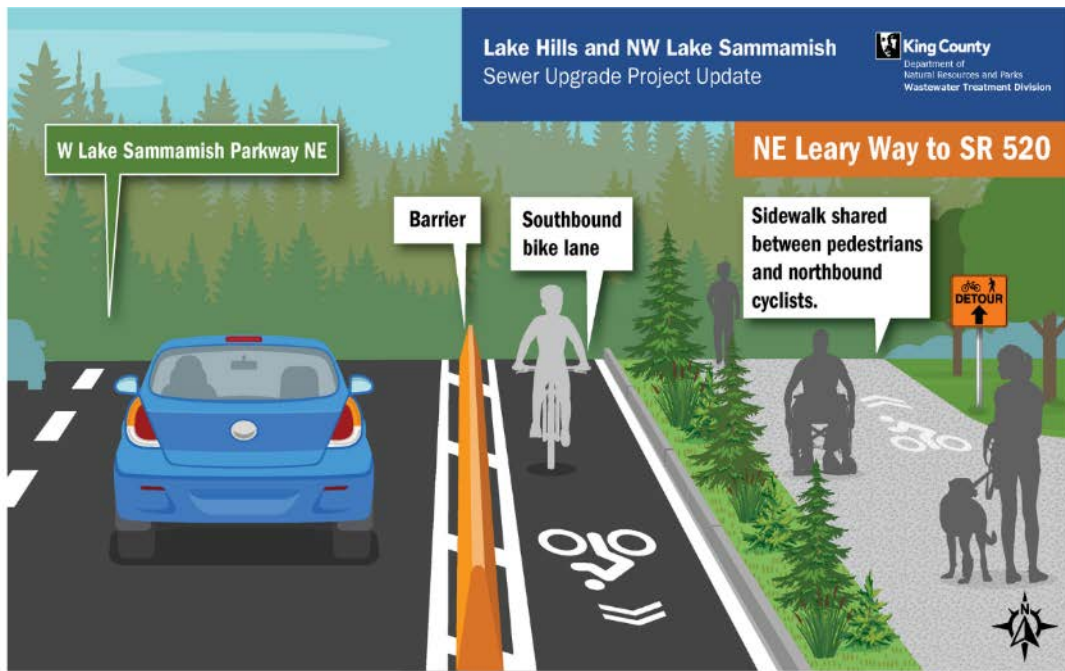
sharing your input on these detours. Your ideas helped improve them to better fit your community's needs!

Scroll down to see how the detour will help safely organize vehicle traffic and trail-users along West Lake Sammamish Parkway between NE Leary Way and NE Marymoor Way.

Detour from NE Leary Way to SR 520



Once construction starts, the detour will include a southbound bike only lane. The shared sidewalk will be wide enough to allow northbound bike traffic, up to 10-foot-wide where possible. The construction crew will maintain an access point along the detour route to allow equipment to travel through the construction zone. Flaggers will be stationed at the entrance of the access point to direct traffic safely through the shared space. Northbound vehicle traffic will be reduced to one lane.

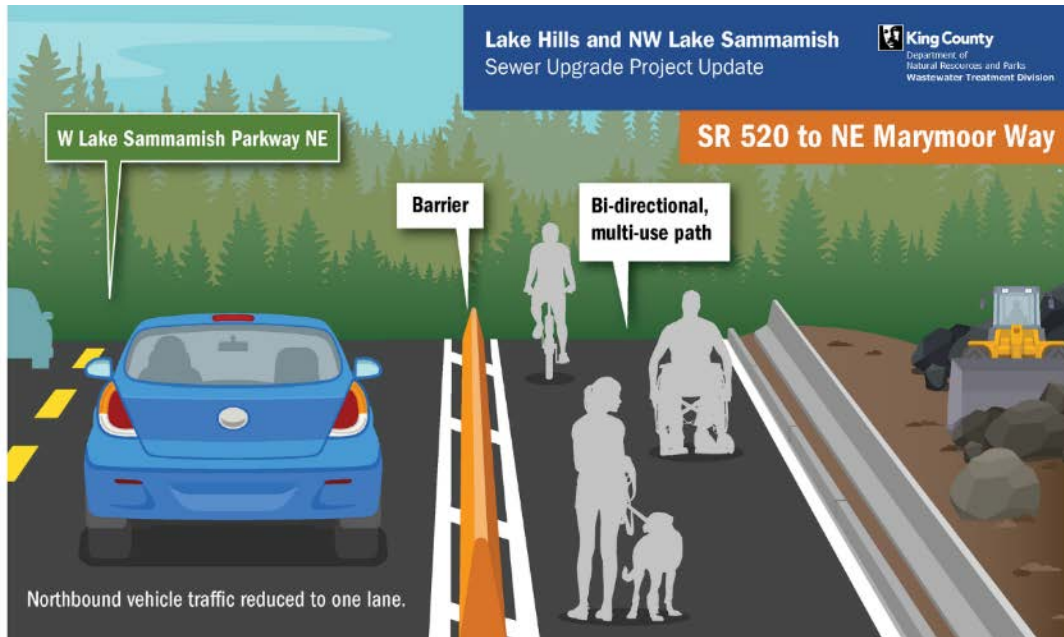


This view shows a section of the detour between NE Leary Way and SR 520. A barrier will separate northbound vehicle traffic from bikes traveling southbound. The shared use path will be for northbound bikes and for trail users.

Detour from SR 520 to NE Marymoor Way



Once construction starts, the detour from SR 520 to NE Marymoor Way will include a 10-foot wide multi-use path for trail users and bicyclists. Northbound vehicle traffic will be reduced to one lane.



This view shows a section of the detour between SR 520 and NE Marymoor Way. A barrier will be used to separate northbound vehicle traffic and a 10-foot-wide multi-use path for trail users and bicyclists.

Getting you prepared for construction

Giving you the information you need to prepare for the project's arrival is important to us. Before construction begins, you can expect more detailed information on:

- The project schedule, including when work will occur in your neighborhood, along West Lake Sammamish Parkway, Marymoor Park, and the Sammamish River Trail
- How the contractor will build each section of the new sewer
- Location-specific construction impacts
- Continued discussion on how we can best inform you of changes to construction activities that may impact your daily routine



A member from the project team addresses questions from community members during Redmond Derby Days 2023.

For more information

- Contact Annie Pfeifer at amurrillpfeifer@kingcounty.gov or 206-263-3203
- Visit the project webpage at kingcounty.gov/KCRedmondSewer
- Sign up for text alerts. Text KING REDMONDSEWER to 468-311